

## Electronic Supplementary Information

### Drug-loaded nanoparticles induce gene expression in human pluripotent stem cell derivatives

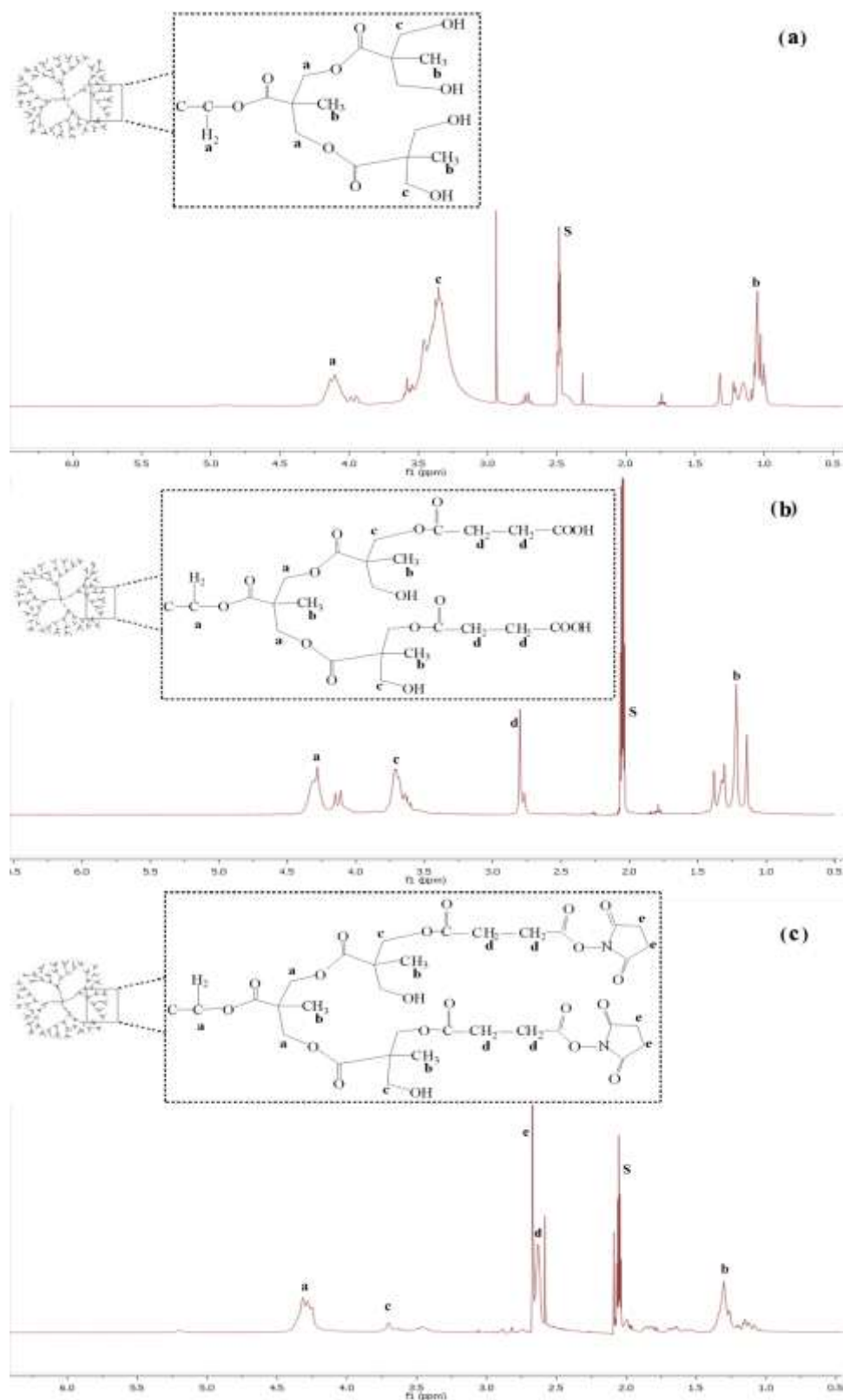
Virendra Gajbhiye<sup>†a</sup>, Leah Escalante<sup>†a</sup>, Guojun Chen<sup>b</sup>, Alex Laperle<sup>a</sup>, Qifeng Zheng<sup>b</sup>, Benjamin Steyer<sup>a</sup>, Shaoqin Gong<sup>\*a,b</sup>, Krishanu Saha<sup>\*a</sup>

<sup>a</sup>Department of Biomedical Engineering and Wisconsin Institute for Discovery and, University of Wisconsin-Madison, Madison, WI 53715 USA

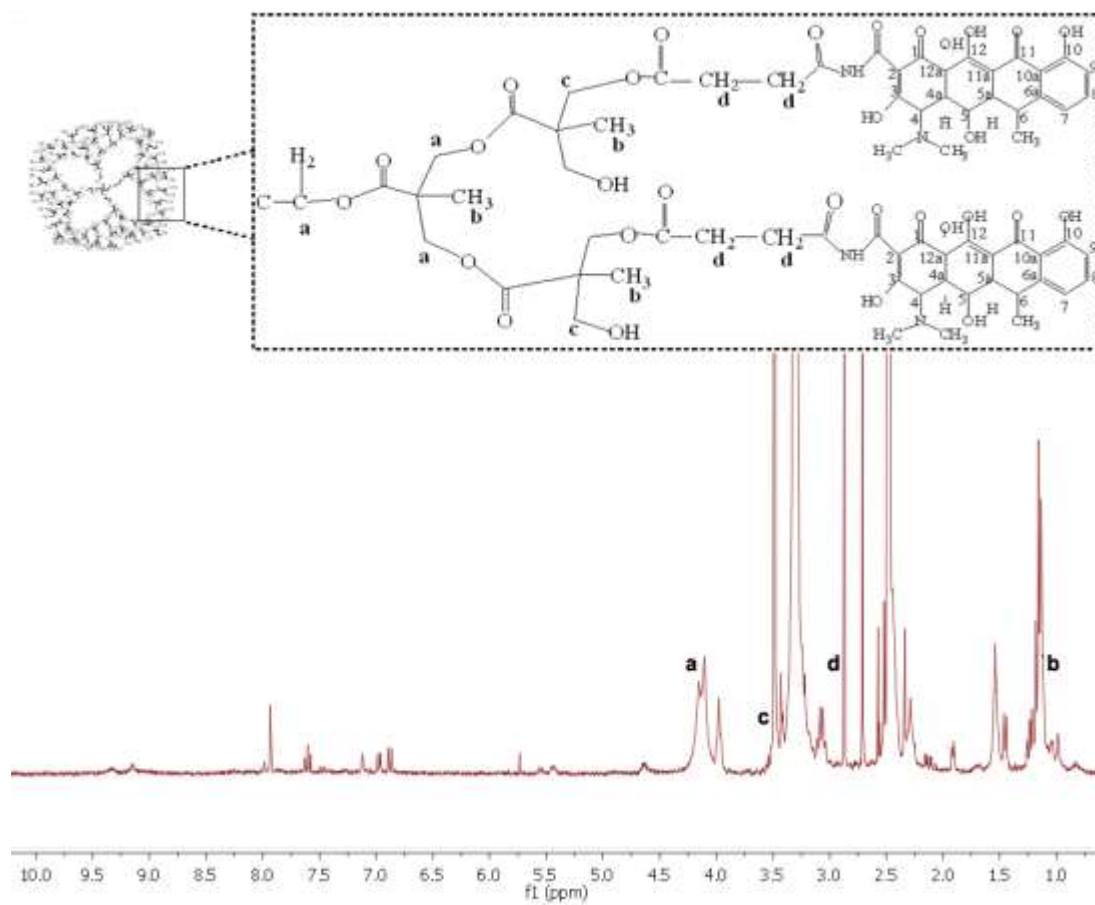
<sup>b</sup>Materials Science Program and Wisconsin Institute for Discovery and, University of Wisconsin-Madison, Madison, WI 53715 USA

<sup>†</sup> These authors contributed equally to the manuscript

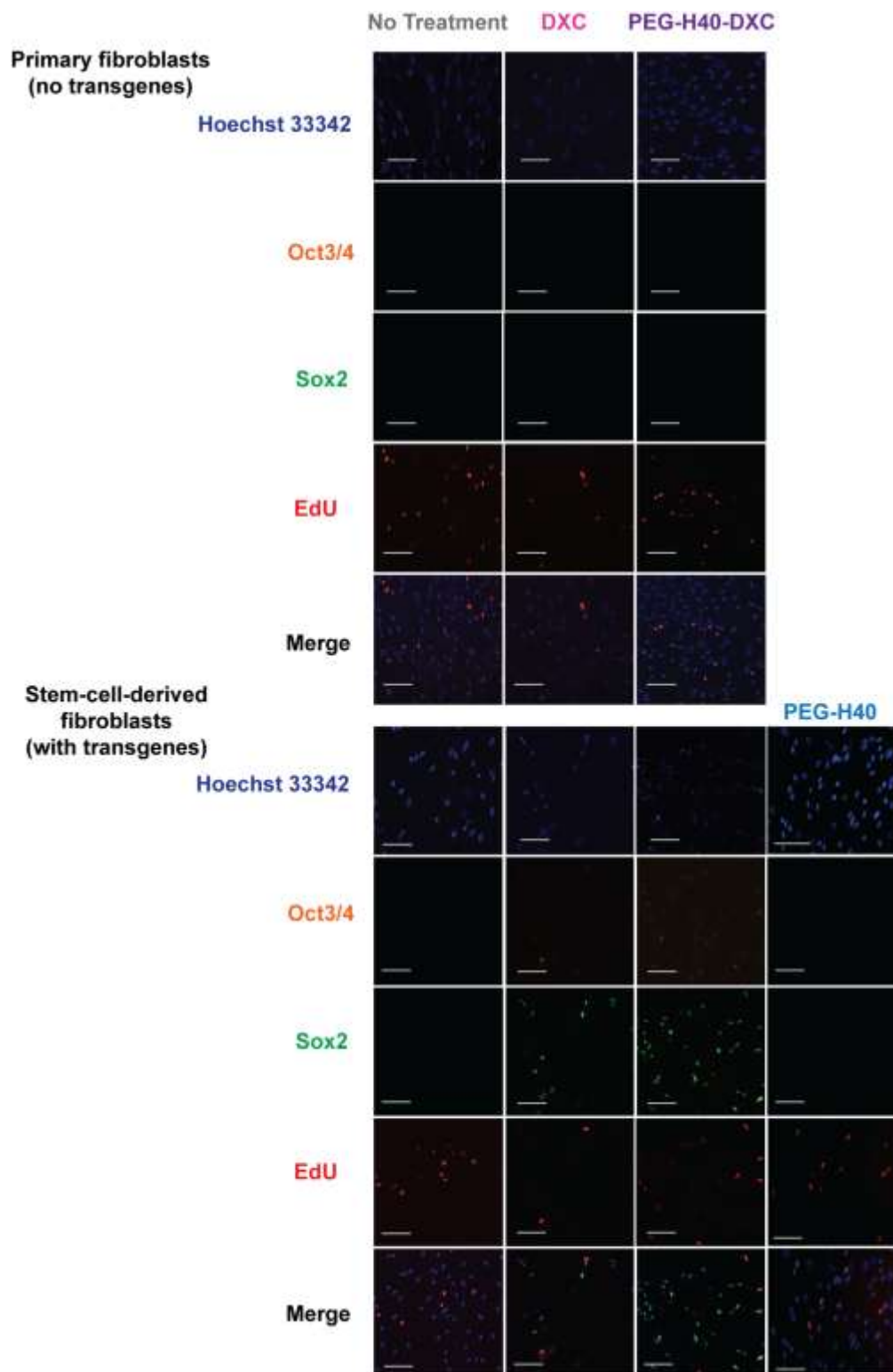
<sup>\*</sup> Address correspondence to: [sgong@engr.wisc.edu](mailto:sgong@engr.wisc.edu) and [ksaha@wisc.edu](mailto:ksaha@wisc.edu)



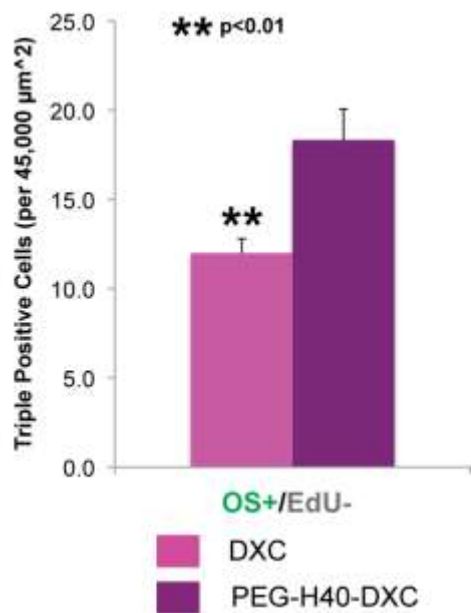
**Figure S-1.** <sup>1</sup>H NMR spectra of (A) H40-OH in DMSO-d<sub>6</sub>, (B) <sup>32</sup>(HOOC)-H40-(OH)<sub>32</sub> in acetone-d<sub>6</sub>, and (C) <sup>32</sup>(OH)-H40-NHS ester in acetone-d<sub>6</sub>.



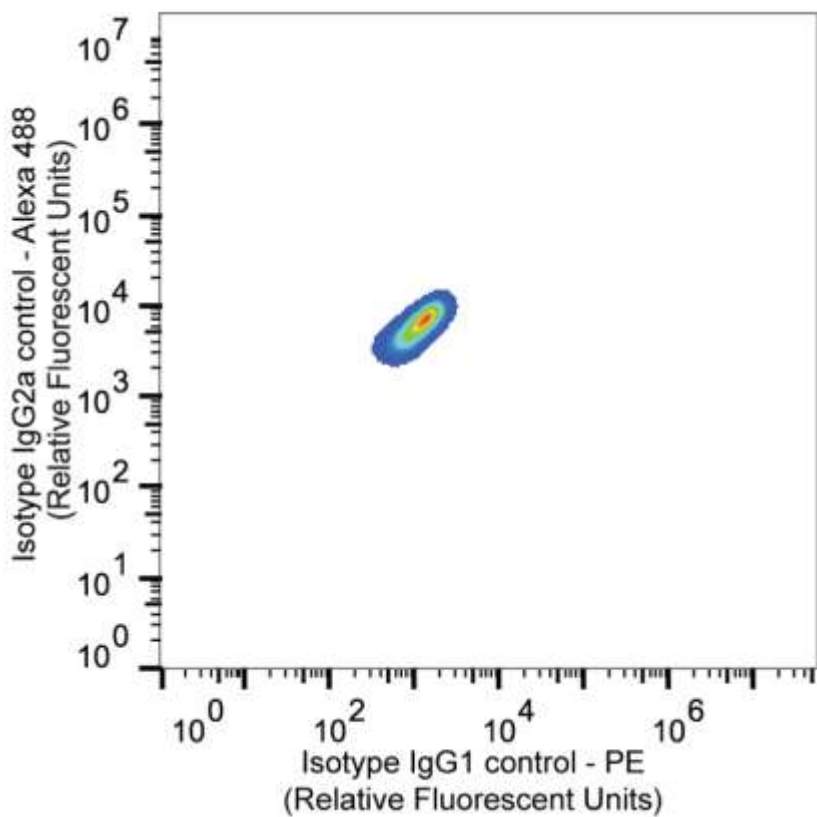
**Figure S-2.**  $^1\text{H}$  NMR spectra of  $32(\text{OH})\text{-H40-DXC}$  in  $\text{DMSO-d}_6$ .



**Figure S-3.** Fluorescent images of proliferative cells of the fibroblast lines in Fig. 7a. A Click-iT EdU assay was performed prior to imaging. EdU is incorporated during DNA synthesis, and click chemistry is utilized for fluorescent detection. Immunocytochemistry was performed after the Click-iT EdU assay against Oct3/4 and Sox2, as previously described in Fig. 7c.



**Figure S-4.** Bar graph of the number of cells per representative fluorescent image (45,000  $\mu\text{m}^2$ ) that are EdU- (no EdU detected via Click-iT EdU assay), but OS+ (positive staining for Oct3/4 and Sox2). Double asterisk represents a statistically significant difference between DXC-treated and PEG-H40-DXC treated secondary C1 fibroblasts with a  $p < 0.01$ , two-tailed Student t-test.



**Figure S-5.** Representative heatmap of background staining from fluorophore-conjugated isotype control antibodies with C1 fibroblasts.