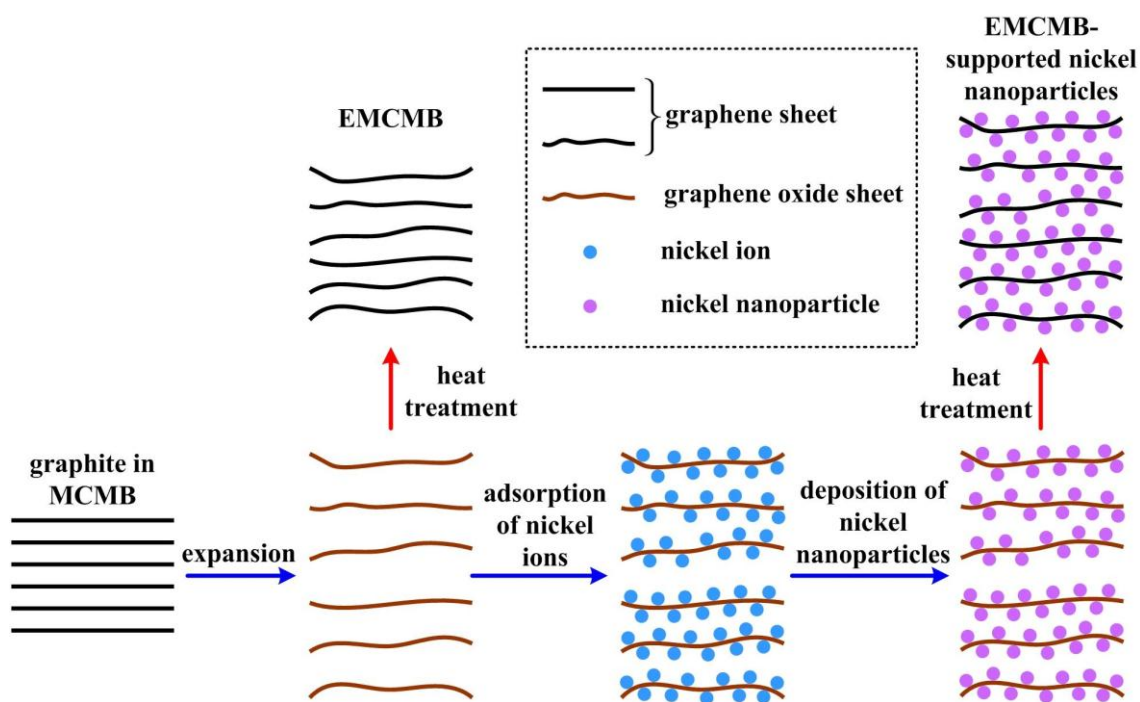


Supplementary Material (ESI) for Nanoscale  
This journal is © The Royal Society of Chemistry 2014

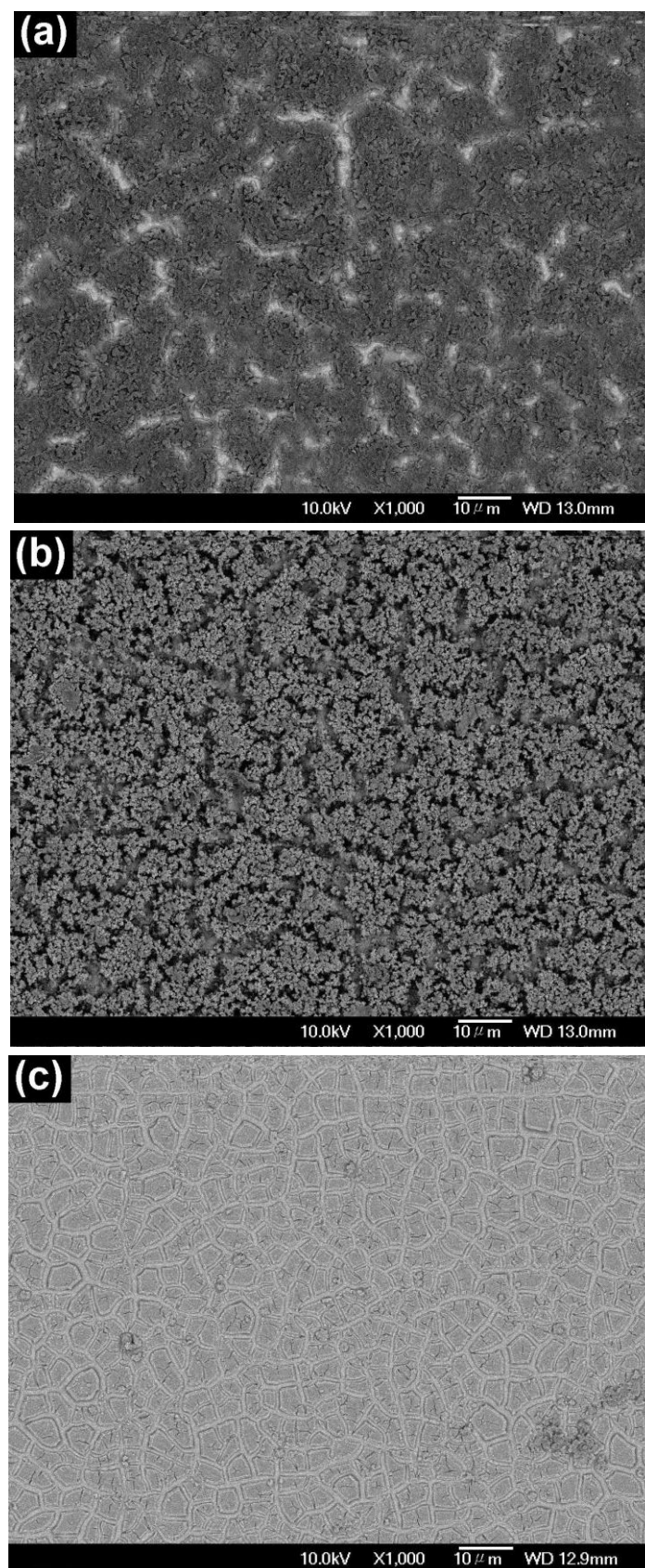
## Electrophoretic self-assembly of expanded mesocarbon microbeads with attached nickel nanoparticles as a high-rate electrode for supercapacitors

Mao-Sung Wu and Yan-Hao Fu

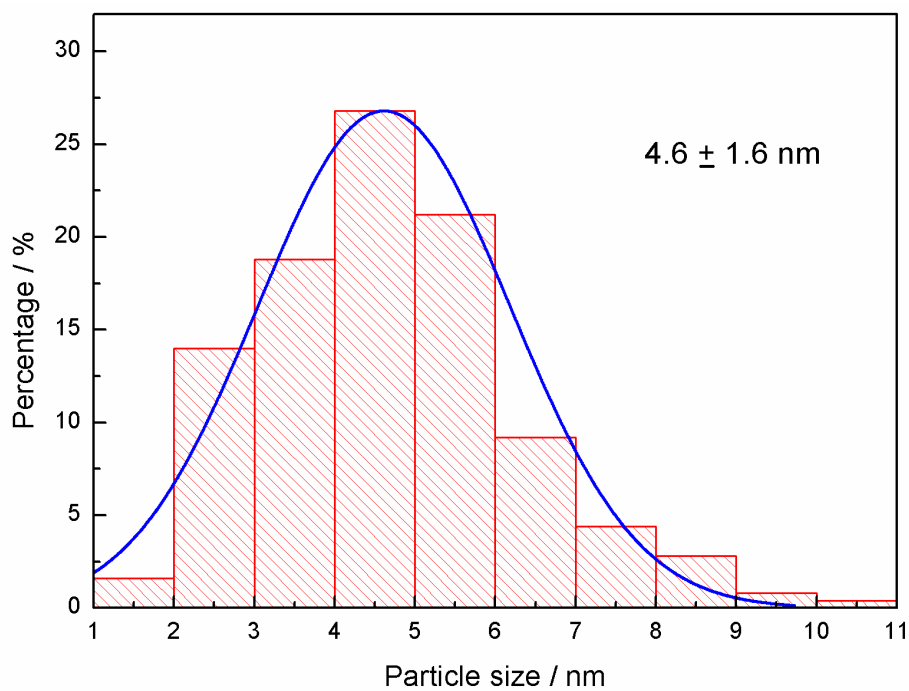
Department of Chemical and Materials Engineering, National Kaohsiung University  
of Applied Sciences, Kaohsiung 807, Taiwan



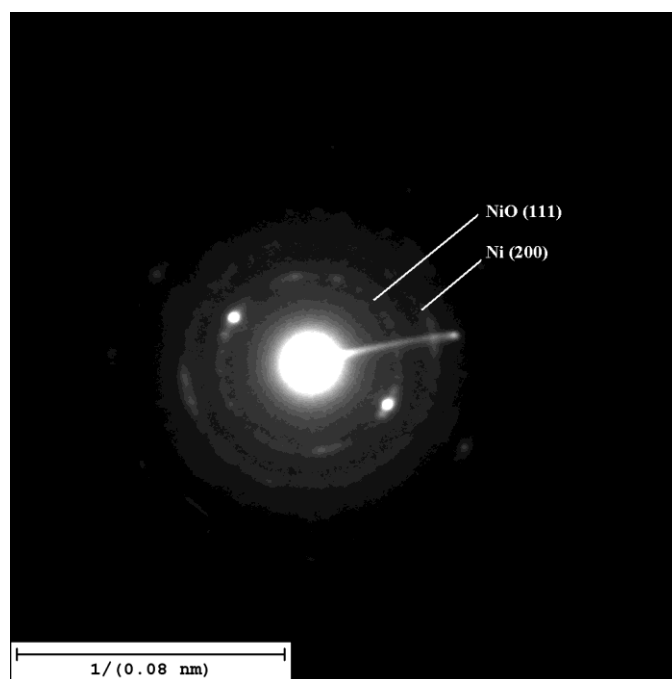
**Fig. S1** Schematic illustrating the formation of EMCMB and EMCMB-supported nickel nanoparticles.



**Fig. S2** Back-scattered electron (BSE) images of (a) EMCMB, (b) EMCMB-supported nickel, and (c) nickel electrodes. Electrodes were annealed at 300 °C before SEM measurement.



**Fig. S3** Particle size distribution of nickel nanoparticles embedded in EMCMB.



**Fig. S4** SAED (selected area electron diffraction) image of nickel nanoparticles embedded in EMCMB using a TEM (Jeol JEM-2010).