

Supporting Information

Artificial leaf structure for UV detector formed by the self-assembly ZnO nanoparticles

5 *Fei Wang^{1,2}, Dongxu Zhao^{1*}, Zhen Guo^{1,2}, Lei Liu¹, Zhenzhong Zhang¹ and Dezhen Shen¹*

1 State key laboratory of luminescence and applications, Changchun Institute of Optics, Fine
Mechanics and Physics, Chinese Academy of Sciences, 3888 Dongnanhu Road, Changchun 130021,
People's Republic of China

2 Graduate School of the Chinese Academy of Sciences, Beijing 100049, People's Republic of China

10

15

20

25

30

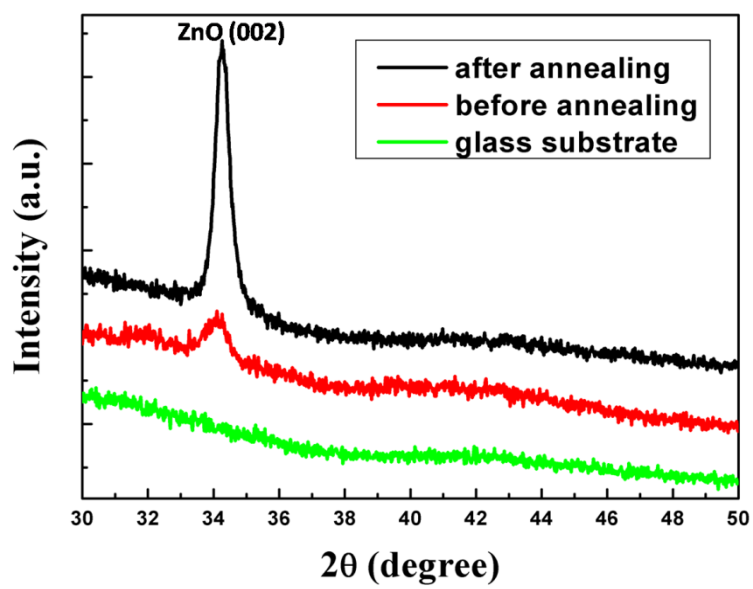


Fig. S1 XRD patterns of the artificial leaf structure before and after annealing.

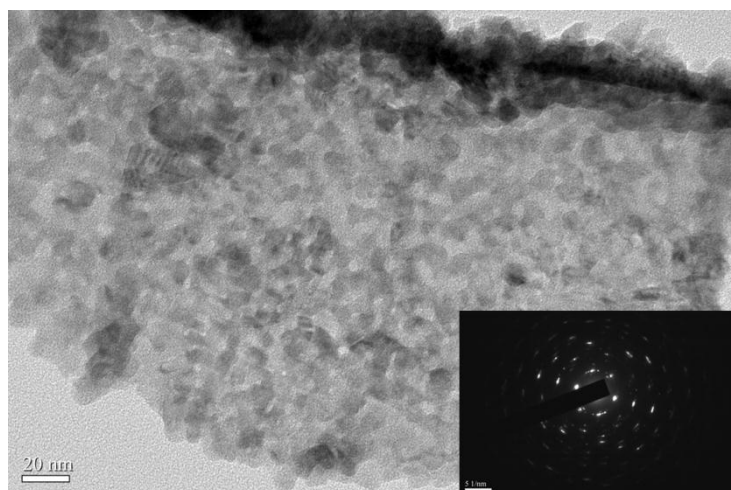


Fig. S2 TEM image of the structure after annealing, insert is the SAED pattern of the sample.