

*Supplementary Information*

## **Clothing polymer fibers with well-aligned and high-aspect ratio carbon nanotubes**

**Gengzhi Sun, Lianxi Zheng,\* Jia An, Yongzheng Pan, Jinyuan Zhou, Zhaoyao Zhan,  
John H. L. Pang, Chee Kai Chua, Kah Fai Leong, Lin Li**

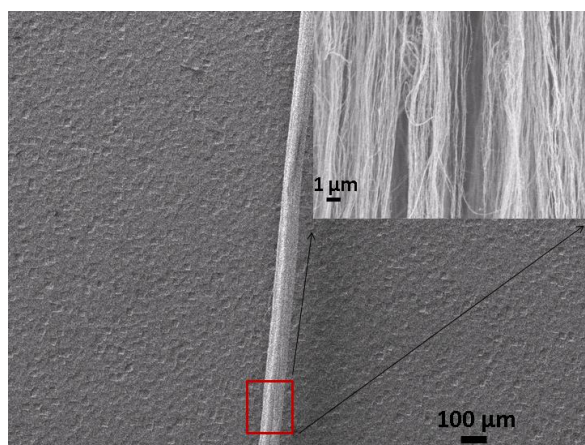


Figure S1. SEM images of a composite fiber before DMF treatment. (The inset is a magnified SEM image of CNTs on the surface of composite fiber).

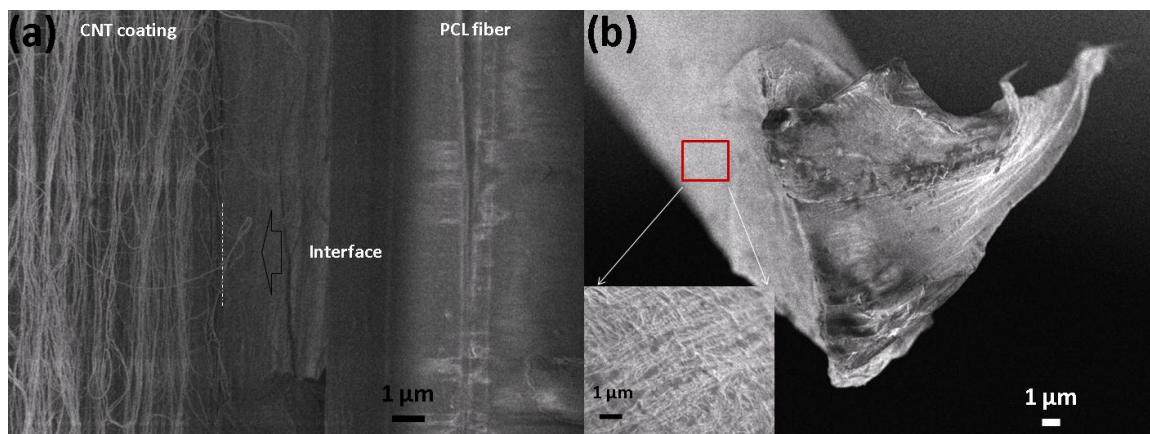


Figure S2. SEM images of the interface between CNTs and PCL fibers before (a) and after (b) DMF treatment.