

Electronic Supplementary Information

Design of efficient dye-sensitized solar cells with patterned ZnO-ZnS core-shell nanowire arrays photoanodes

Xiang Chen,^{‡a} Zhiming Bai,^{‡a} Xiaoqin Yan,^a Haoge Yuan,^a Guangjie Zhang,^a Pei Lin,^a
Zheng Zhang,^a Yichong Liu^a and Yue Zhang^{*ab}

^aState Key Laboratory for Advanced Metals and Materials, School of Materials Science and
Engineering, University of Science and Technology Beijing, Beijing 100083, China

^bKey Laboratory of New Energy Materials and Technologies, University of Science and
Technology Beijing, Beijing 100083, China

[‡]These authors contributed equally to this work.

*E-mail: yuezhang@ustb.edu.cn

Contents:

Supplementary Figure S1-S2

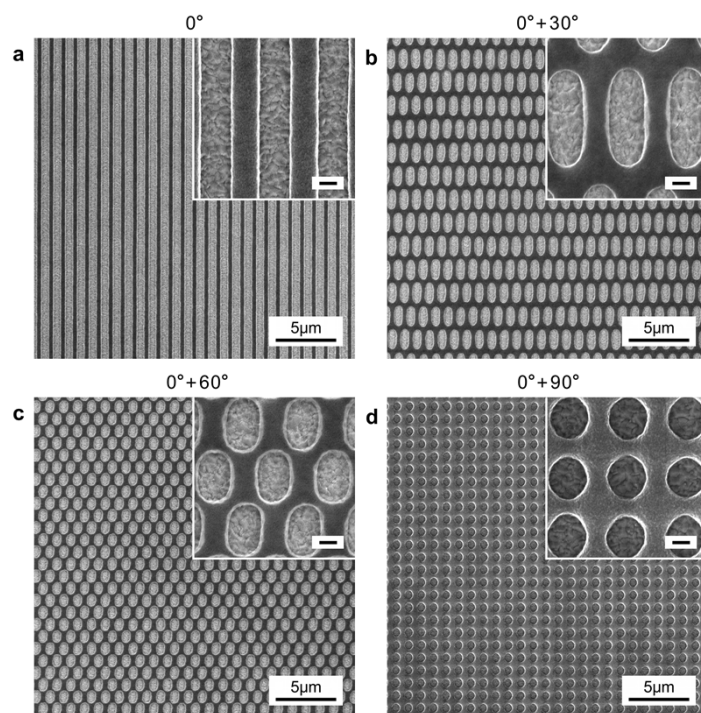


Fig. S1 Top view SEM images of the PR templates with (a) line, (b) long hexagonal, (c) hexagonal and (d) square symmetries, fabricated by using four exposure modes, including 0° , $0^\circ+30^\circ$, $0^\circ+60^\circ$ and $0^\circ+90^\circ$, respectively. Insets show the corresponding magnified SEM images, scale bars are 300 nm.

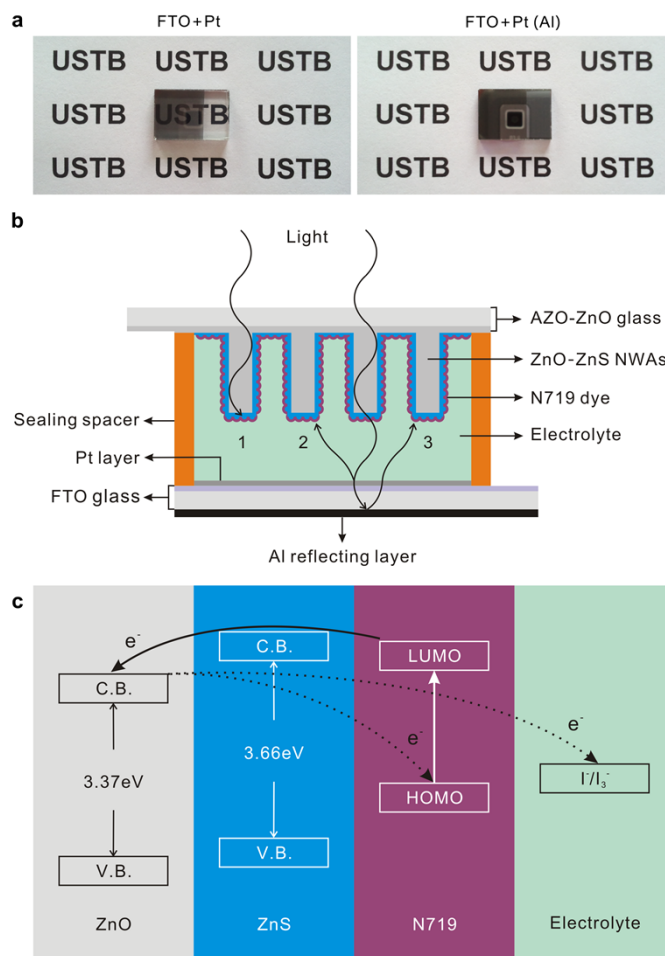


Fig. S2 (a) Optical images of the FTO-Pt cathodes with or without Al reflecting layer. (b) Schematic illustration of the presented DSSCs and light transport path. (c) Energy level diagram for the ZnO-ZnS core-shell NWAs with N719 dye in electrolyte.