

SUPPORTING INFORMATION

Lipid nanocapsules functionalized with polyethyleneimine for plasmid DNA and drug co-delivery and cell imaging

Nadia Skandrani,^{1,2} Alexandre Barras,¹ Dominique Legrand,³ Tijani Gharbi,^{2,4} Hatem Boulahdour,^{2,4}

Rabah Boukherroub^{1*}

¹*Institut de Recherche Interdisciplinaire (IRI, USR CNRS 3078), Parc de la Haute Borne, 50 Avenue de
Halley, BP 70478, 59658 Villeneuve d'Ascq, France*

²*Laboratoire de Nanomédecine, Imagerie et Thérapeutique, Université de Franche-Comté, 16 Route de
Gray, 25030 Besançon, France*

³*Unité de Glycobiologie Structurale et Fonctionnelle (UMR CNRS 8576), Institut Fédératif de
Recherche n°147, Université Lille1, 59655 Villeneuve d'Ascq, France*

⁴*CHRU Jean Minjoz, 3 Bd Alexandre Fleming, 25030 Besançon, France*

*To whom correspondence should be addressed. Tel: +33 3 62 53 17 24; Fax: +33 3 62 53 17 01; E-mail: rabah.boukherroub@iri.univ-lille1.fr

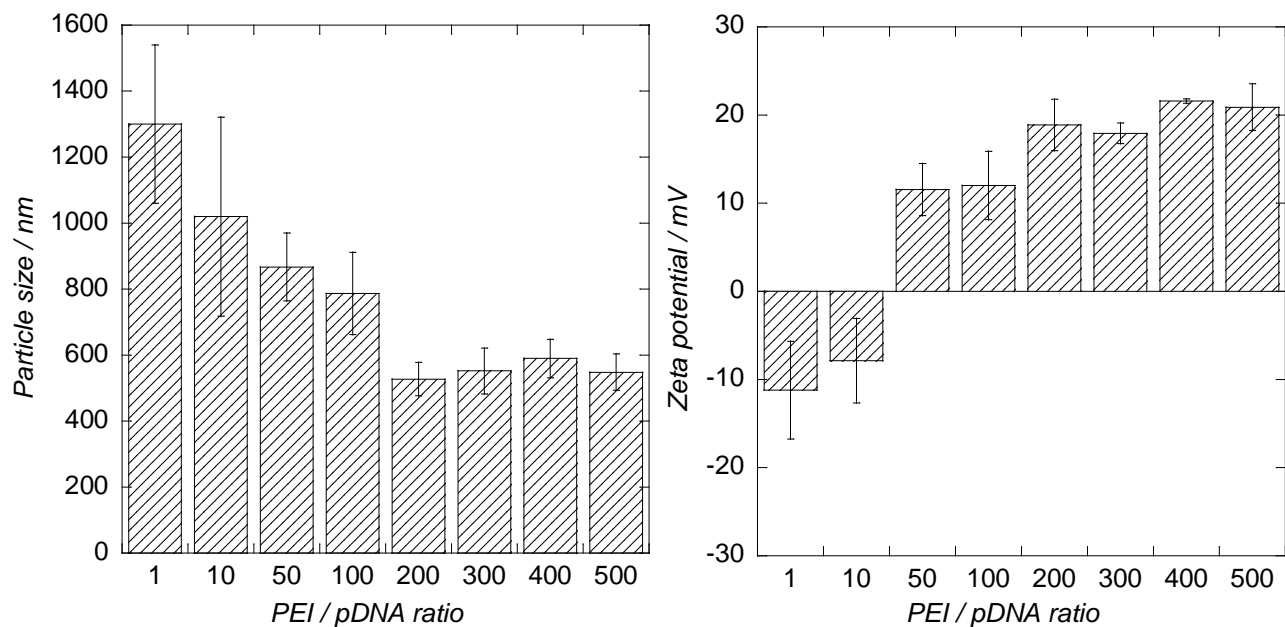


Figure S1: Size and zeta potential measurements of PEI/pDNA complexes in aqueous solutions (1 mL); pDNA (1 μ g) was incubated with increasing amounts of PEI for 30 min at room temperature.

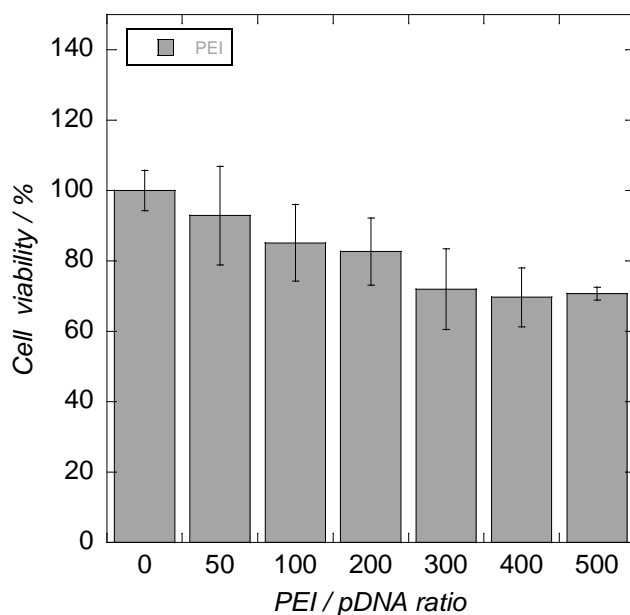


Figure S2. *In vitro* cytotoxicity of PEI/pDNA complexes. MTT assay data for cells and PEI/pDNA complexes at different ratios on the HEK cell culture.

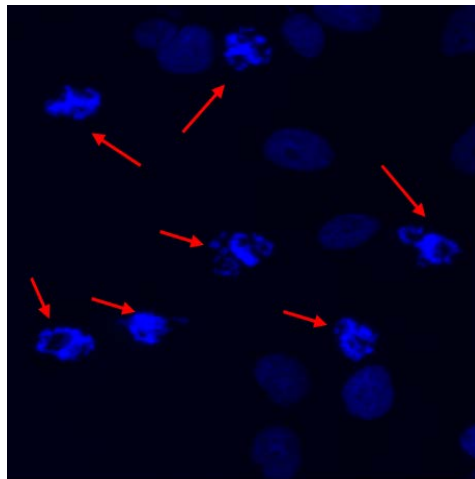


Figure S3: High magnification of Figure 8B (right image), corresponding to DAPI staining of HEK cells after incubation for 4 h with LNC25-PTX-T (LNC concentration 500 $\mu\text{g}/\text{mL}$, PTX concentration 1 $\mu\text{g}/\text{mL}$). The red arrows point to fragmented nuclei.

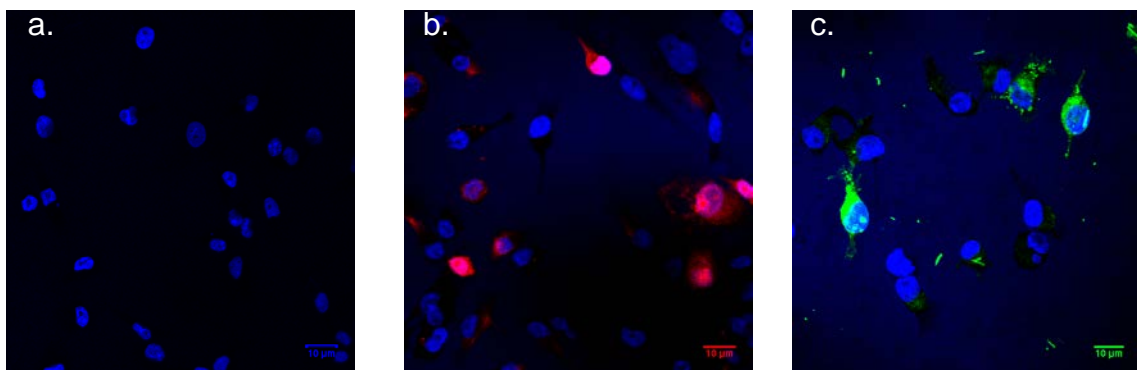


Figure S4: Fluorescence images of HEK cells untreated (a) as negative control, and treated with LNC-T/pDNA loaded with DiI (100 $\mu\text{g}/\text{mL}$) (b) and DiO (100 $\mu\text{g}/\text{mL}$) (c). The scale bare represents 10 μm . The cells were fixed with 4% paraformaldehyde in PBS at room temperature for 15 min, stained with 0.1 $\mu\text{g}/\text{mL}$ DAPI in PBS at room temperature for 15 min and washed twice with PBS and water.

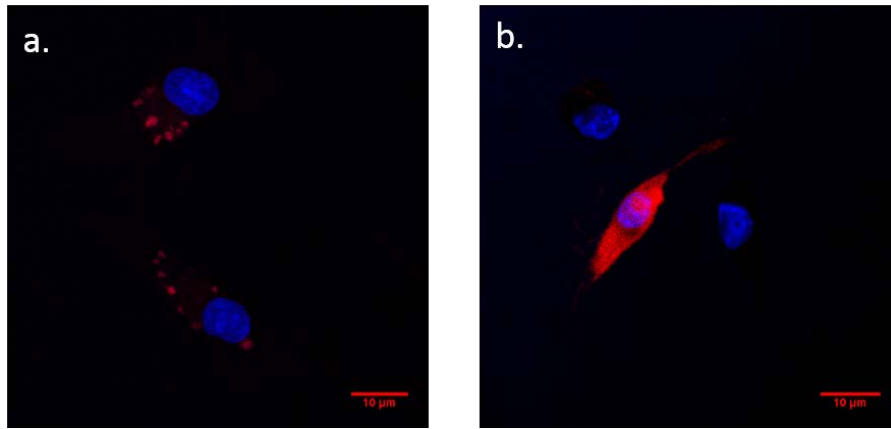


Figure S5: High magnification of the Figure S4b (HEK cells treated with LNC-T/pDNA loaded with DiI (100 $\mu\text{g}/\text{mL}$) after 1 h (a) and 4 h (b) incubation.