

Supporting Information

Figure S1

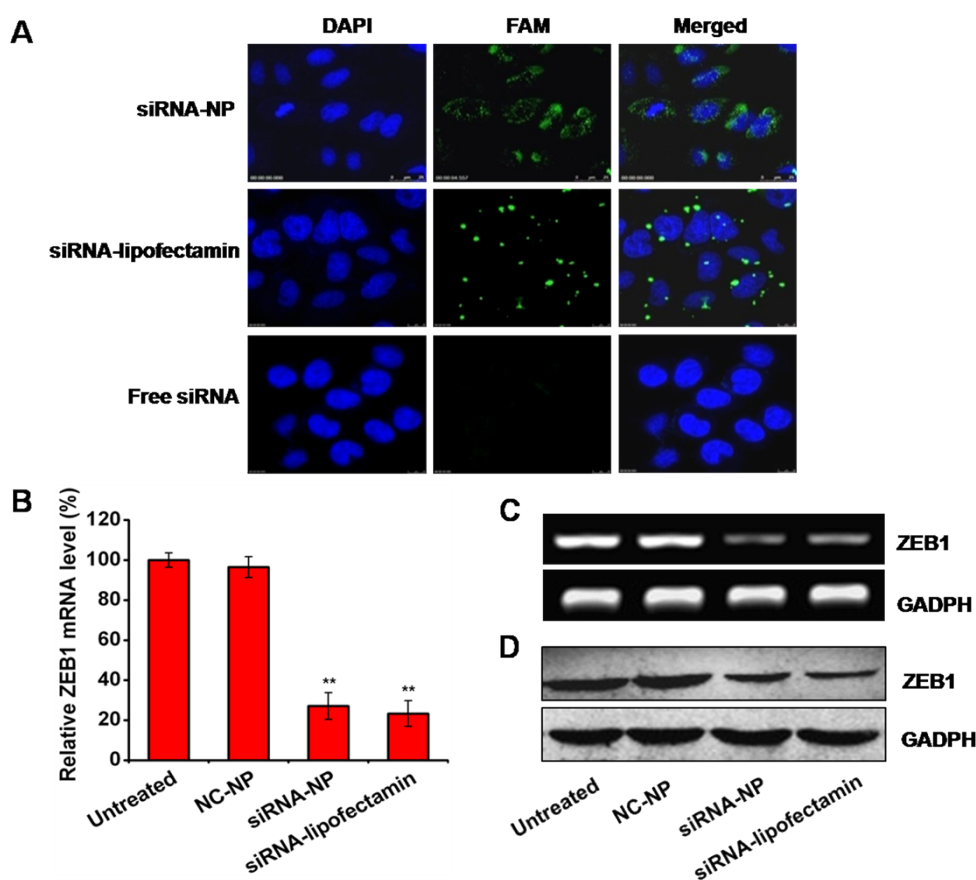


Figure S1. Uptake of siRNA and knockdown efficiency of ZEB1 in vitro. (A) Confocal laser scanning microscope (CLSM) image of intracellular distribution of FAM-siRNA in H460 cells after incubation with NP-siRNA, liposome-siRNA and free siRNA for 4h. The siRNA was labeled with FAM (green). The nucleus was counterstained with DAPI (blue). (B) Relative mRNA level of ZEB1 quantified by real-time PCR analysis. (C) Representative ZEB1 mRNA expression evaluated by RT-PCR. (D) Representative ZEB1 protein expression determined by Western blot analysis. H460 cells were transfected with siRNA in different formulations: (1) untreated; (2) NC-NP; (3) siRNA-NP; (4) siRNA-lipofectamin. The concentrations of ZEB1 siRNA and NC siRNA were 50 nM. ** $p < 0.01$ as compared with controls. Data are mean \pm SD ($n = 5$).

Table S1**Table S1:** The primers used for RT-PCR and real-time PCR

Gene	Primer
ZEB1	Forward: 5'-TCCATGCTTAAGAGCGCTAGCT-3' Reverse: 5'-ACCGTAGTTGAGTAGGTGTATGCCA-3'
SOX2	Forward: 5'-GGGAAATGGGAGGGGTGCAAAGAGG-3' Reverse: 5'-TTGCGTGAGTGTGGATGGGATTGGTG-3'
ABCG2	Forward: 5'-TGCAACAGGAAACAATCCTTGT-3' Reverse: 5'-AGATCGATGCCCTGCTTTACC-3'
E-cadherin	Forward: 5'-CGGGAATGCAGTTGAGGATC-3' Reverse: 5'-AGGATGGTGTAAGCGATGGC-3'
GADPH	Forward: 5'-GTGTTCTACCCCAATGTGT-3' Reverse: 5'-ATTGTCATACCAGGAAATGAGCTT-3'