

## SUPPLEMENTARY INFORMATION

# Switchable Supramolecular Assemblies on Graphene

Qiaoyu Zhou<sup>a, ‡</sup>, Yibao Li<sup>b, ‡</sup>, Qiang Li<sup>a</sup>, Yibing Wang<sup>a</sup>, Yanlian Yang<sup>a</sup>, Ying Fang<sup>a,\*</sup> and Chen Wang<sup>a,\*</sup>

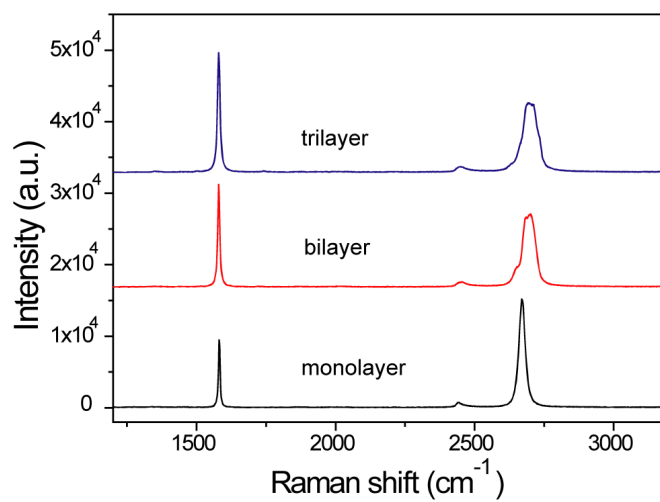
<sup>a</sup> National Center for Nanoscience and Technology, China, 11 Beiyitiao Street, Zhongguancun, Beijing 100190, P.R.China

<sup>b</sup> Key Laboratory of Organo-pharmaceutical Chemistry, Gannan Normal University, Ganzhou 341000, P. R. China.

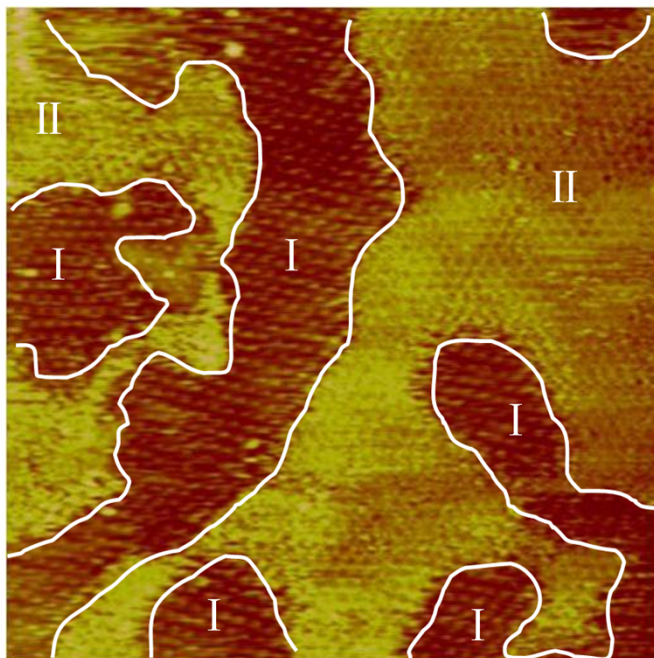
**This file includes:**

Supplementary Fig. S1 to S4

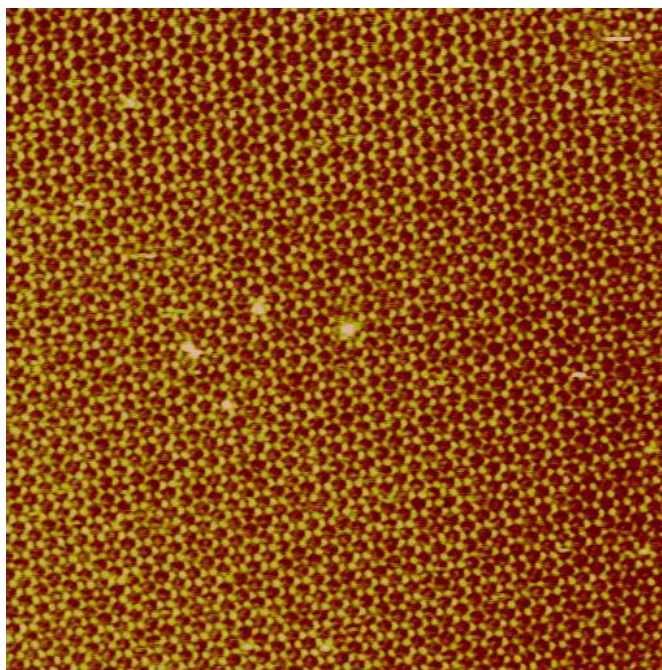
## Supplementary Figures



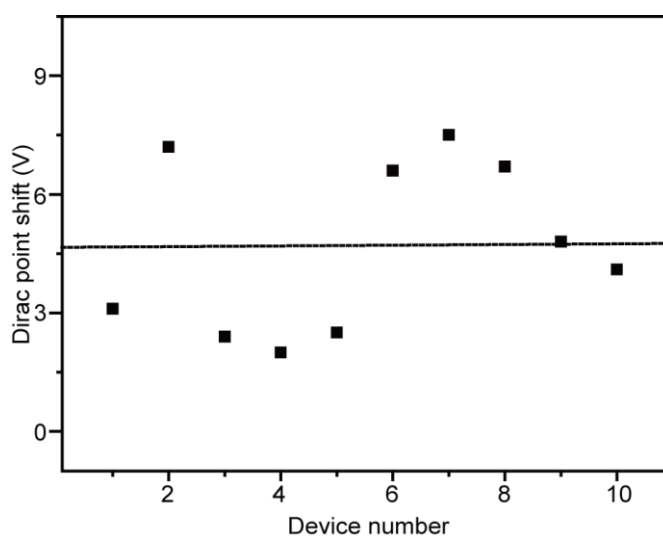
**Fig. S1** Raman spectra of single-, bi- and tri-layer graphene sheets, respectively.



**Fig. S2** A large-scale STM image ( $182.9 \text{ nm} \times 182.9 \text{ nm}$ ) of the self-assembled TMA at the 1-octanoic acid/bilayers graphene interface.



**Fig. S3** A large-scale STM image ( $182.9 \text{ nm} \times 182.9 \text{ nm}$ ) of the self-assembled TMA at the 1-octanoic acid/graphite interface.



**Fig. S4** Dirac point shift of 10 single-layer graphene transistors after the adsorption of TMA adlayers.