

## Edge-Enriched Graphene Quantum Dots for Enhanced Photo-Luminescence and Supercapacitance

Mahbub Hassan,<sup>a</sup> Enamul Haque,<sup>a</sup> Kakarla Raghava Reddy,<sup>a</sup> Andrew I. Minett,<sup>a</sup> Jun Chen<sup>b</sup> and Vincent G. Gomes<sup>a</sup>

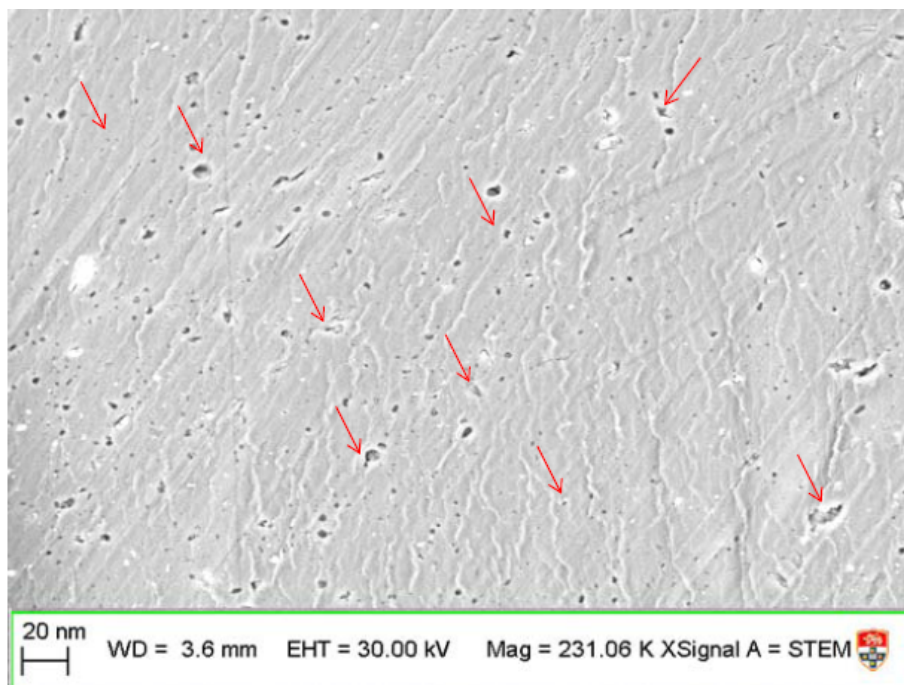


Figure 1S: Magnified image of Fig 3b showing nanopores (red arrows) on activated graphene sheet

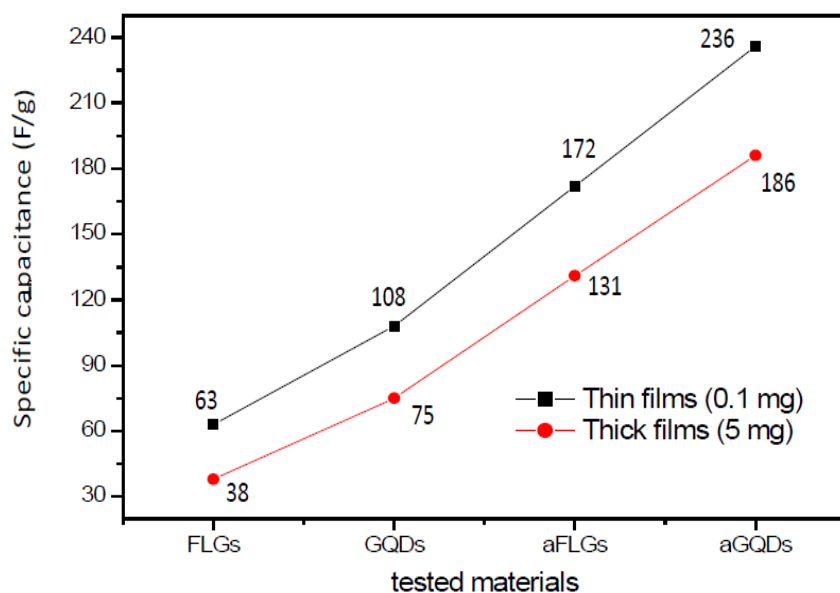


Figure 2S: Specific capacitance (F/g) of both thin (0.1 mg) and thick (5 mg) films

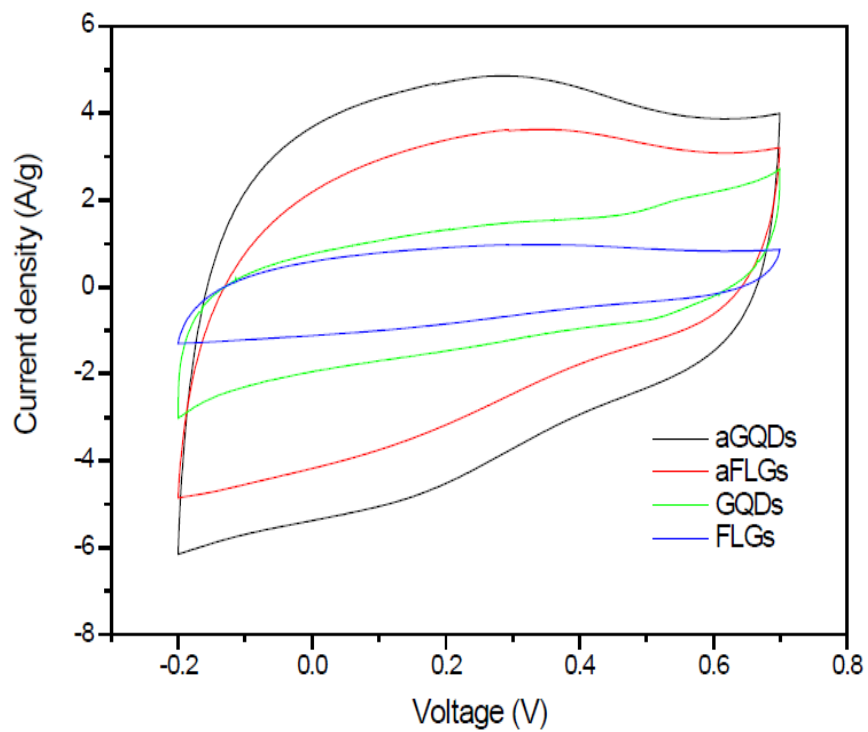


Figure 3S: Cyclic voltammogram curves for thick (5 mg) films at 20 mV/s scan rate

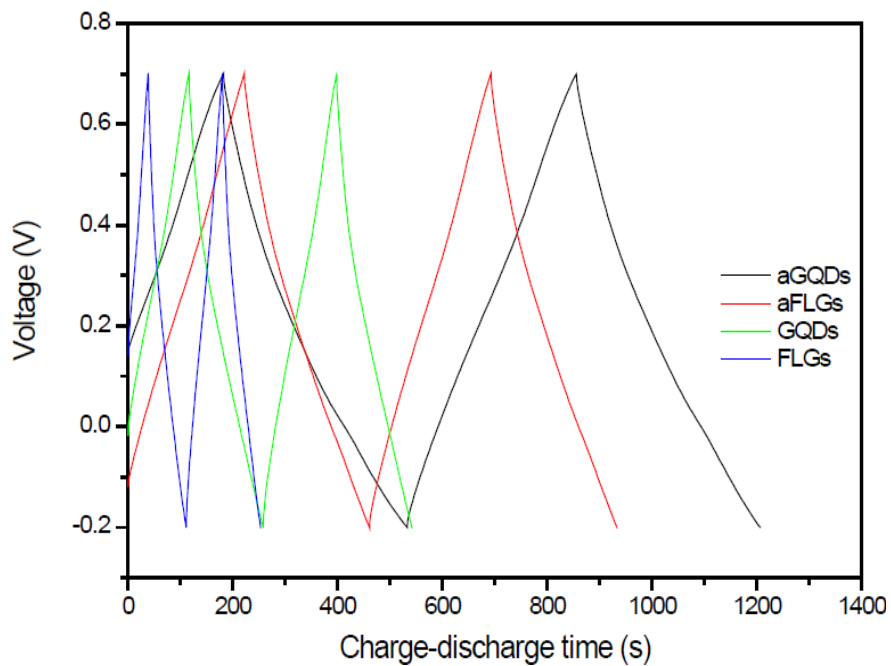


Figure 4S: Charge-discharge curves for thick (5 mg) films at 0.5A/g current density