

Electronic Supplementary Information For

The Role of Nanoparticle monolayer on the nanoflowing Behavior of Polymer melts in Nanochannel

Long-Biao Huang,^{ab} Ye Zhou,^{ab} Su-Ting Han,^{ab} Yan Yan,^{ab} Li Zhou,^{ab} and V. A. L. Roy*^{ab}

^a Centre of Super-Diamond and Advanced Films (COSDAF), Department of Physics and Materials Science, City University of Hong Kong, Hong Kong SAR E-mail: val.roy@cityu.edu.hk

^b Shenzhen Research Institute, City University of Hong Kong, High-Tech Zone, Nanshan District, China.

Email address: val.roy@cityu.edu.hk

Supplementary Figures

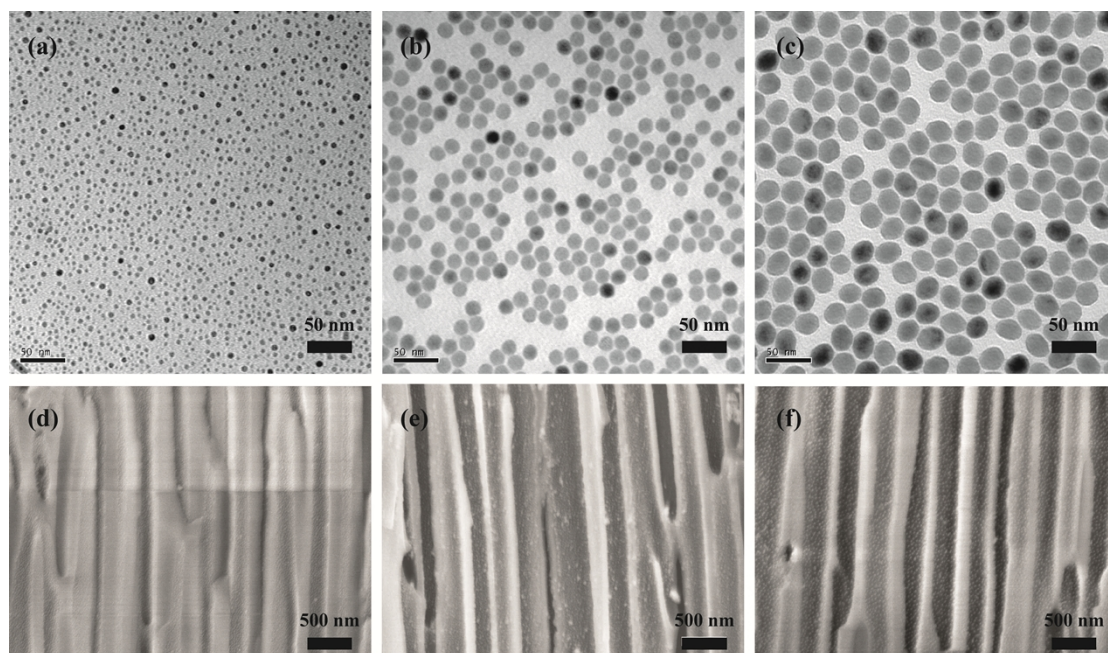


Fig. S1 The TEM images of 5 nm (a), 15 nm (b) and 25 nm (c) AuNPs and corresponded AuNPs monolayer in the nanochannel of AAO: (d) 5 nm AuNPs monolayers, (e) 15 nm AuNPs monolayers and (f) 25 nm AuNPs monolayers

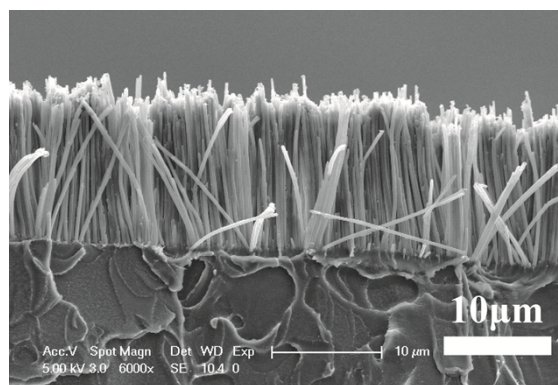


Fig. S2 SEM cross-section image of PS nanowire from pristine AAO