

SUPPORTING INFORMATION

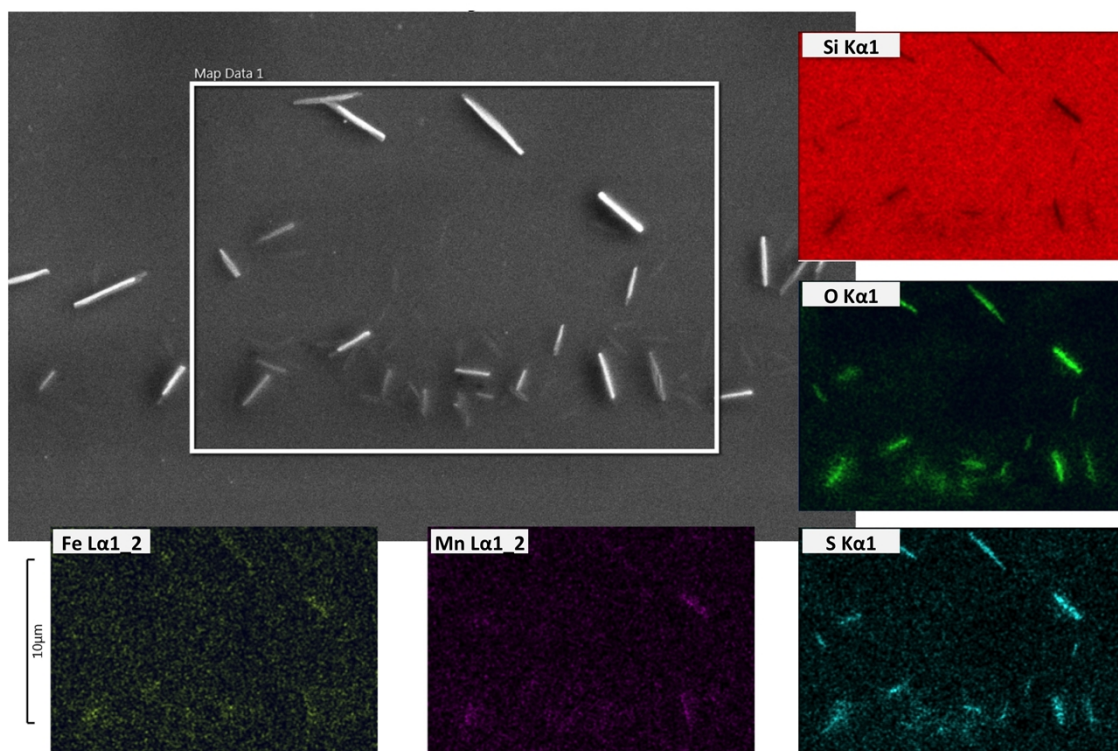


Fig. S1

Figure S1. Example of the structures spotted at random locations of the samples, outside the central 3 mm spot. While the substrate background was coated with a thin layer of nanoparticles as in Fig. 3, structures 160 to 220 nm wide and 1 to 3 μ m long were also found. As illustrated by the EDS maps, these structures had a sulfur content which was not detected in the background layer. Since they consist of manganese, iron, sulfur and oxygen, their most probable source is precursor debris.

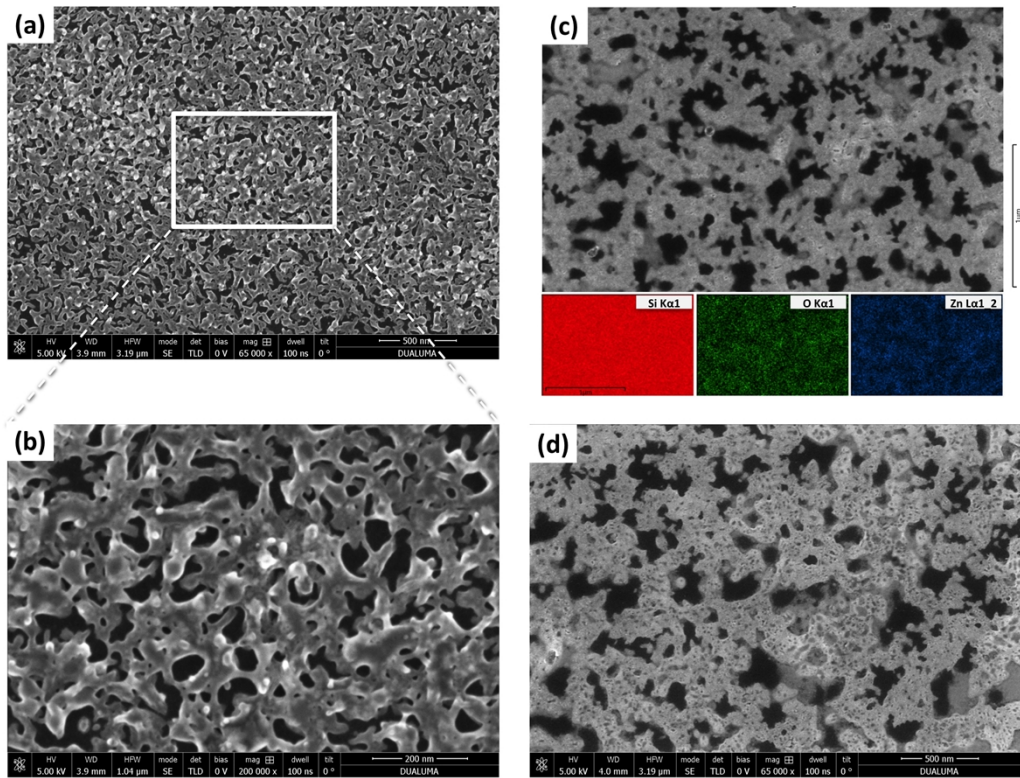


Fig. S2

Figure S2. SEM images of two nanoporous ZnO layer similar to that in Fig. 7 (reproduced here as Fig. S2c for comparative purposes). The structure and pore size were found to depend both on the droplet dispensing rate and on the distance from the droplet stream and the substrate. No C was detected.