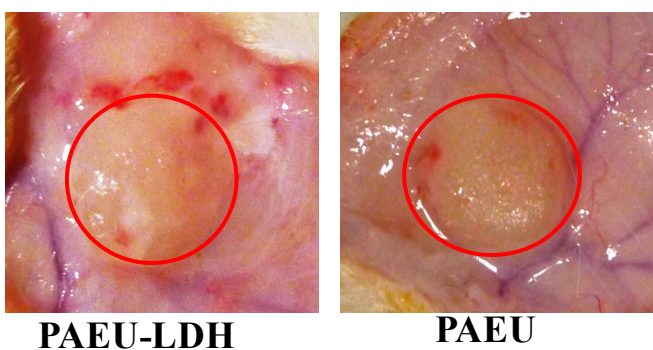


**Supplementary file:**

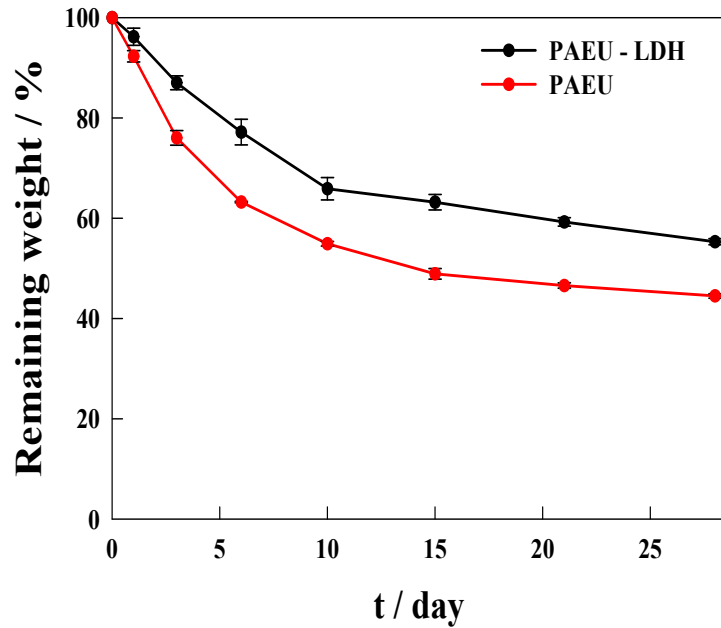
**Table 1:**

Sample	PCLA <sup>b</sup> -PEG <sup>a</sup> -PCLA <sup>b</sup>	CL/LA <sup>b</sup>	PCLA-PAEU [Tri-PAEU <sup>b</sup> ] <sub>x</sub> <sup>c</sup>	Mn <sup>c</sup>	PDI <sup>c</sup>
Triblock	897-2050-897	1.21		4126	1.15
Multiblock	897-2050-897	1.21	[3844-3266] <sub>1.14</sub>	8132	1.98

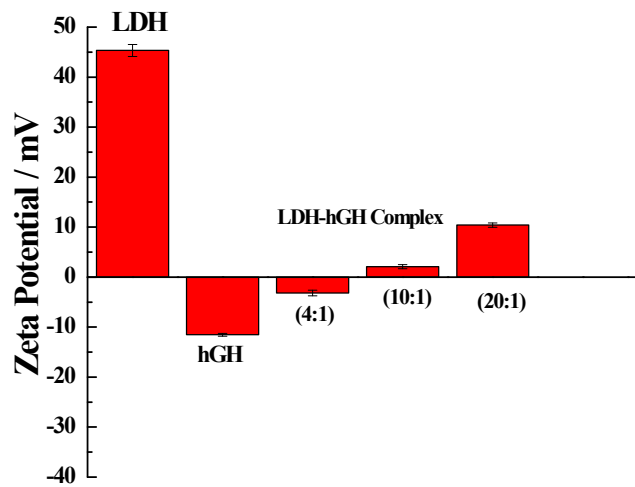
<sup>a</sup> Provided by Sigma-Aldrich; <sup>b</sup> calculated from <sup>1</sup>H-NMR; <sup>c</sup> measured and calculated by GPC.



**Figure 1:** The solid hydrogel integrity within 15 min after subcutaneously injection into SD rats.



**Figure 2:** In vivo degradation of PAEU and PAEU/LDH hydrogel (15 wt%, pH 6.3) determined by the mass loss method



**Figure 3:** Zeta potential of the human growth hormone loaded LDH using various weight ratios were characterize in PBS at pH 7.4