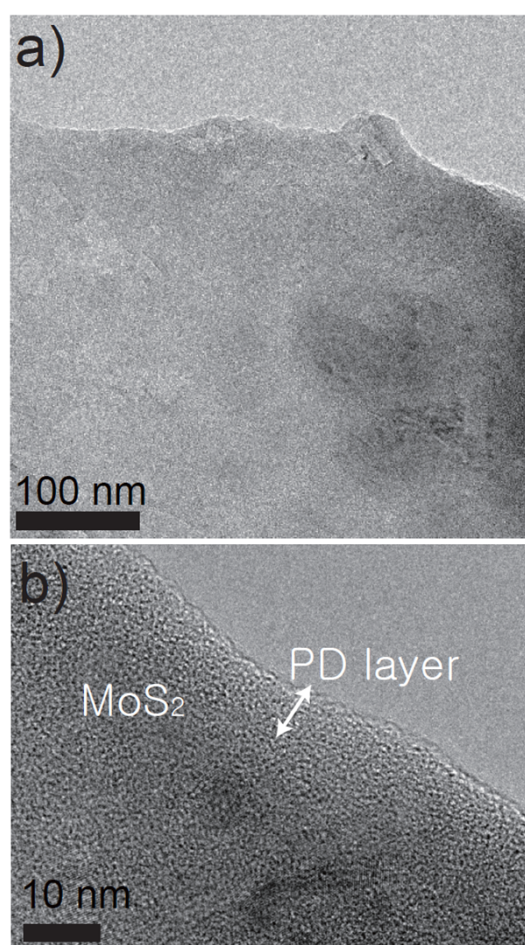


Electronic Supplementary Material (ESI) for Nanoscale.  
This journal is © The Royal Society of Chemistry 2014

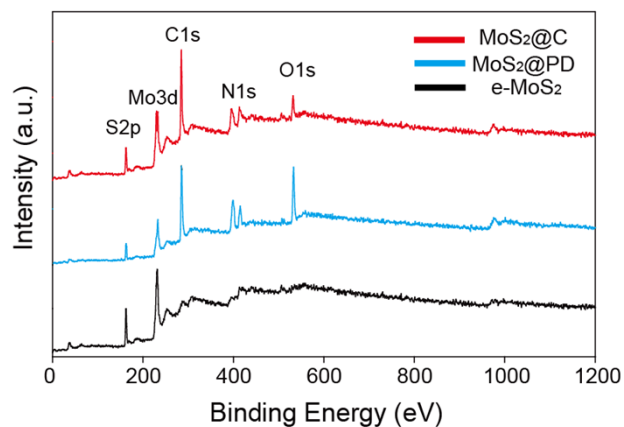
## Supporting Information

### Ultrathin Sandwich-like MoS<sub>2</sub>/N-doped Carbon Nanosheets for Anodes of Lithium-ion Batteries

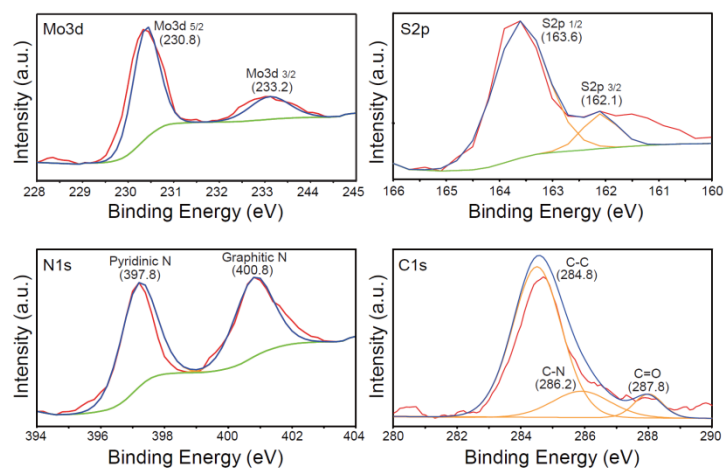
*Jae-Min Jeong, Kyoung G. Lee, Sung-Jin Chang, Jung Won Kim, Young-Kyu Han, Seok Jae Lee, and Bong Gill Choi\**



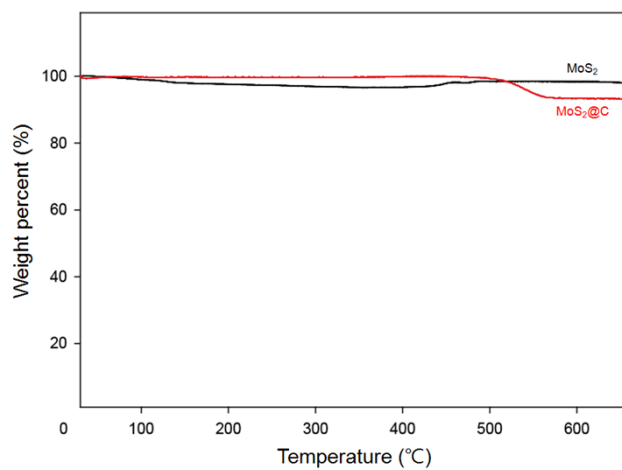
**Fig. S1** (a) and (b) TEM images for MoS<sub>2</sub>@PD samples.



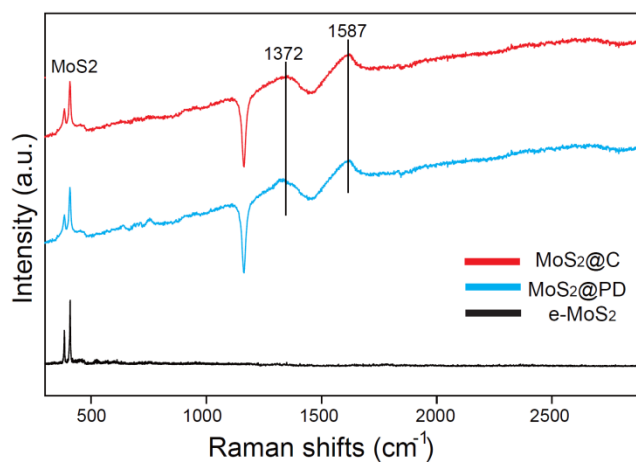
**Fig. S2** Survey XPS spectra of MoS<sub>2</sub>@C, MoS<sub>2</sub>@PD, e-MoS<sub>2</sub> samples.



**Fig. S3** High resolution XPS spectra of Mo 3d, S 2p, N 1s, and C 1s on MoS<sub>2</sub>@C samples.



**Fig. S4** Thermogravimetric analysis of MoS<sub>2</sub>@C and MoS<sub>2</sub> samples.



**Fig. S5** Raman spectra of e-MoS<sub>2</sub>, MoS<sub>2</sub>@C and MoS<sub>2</sub>@PD samples.