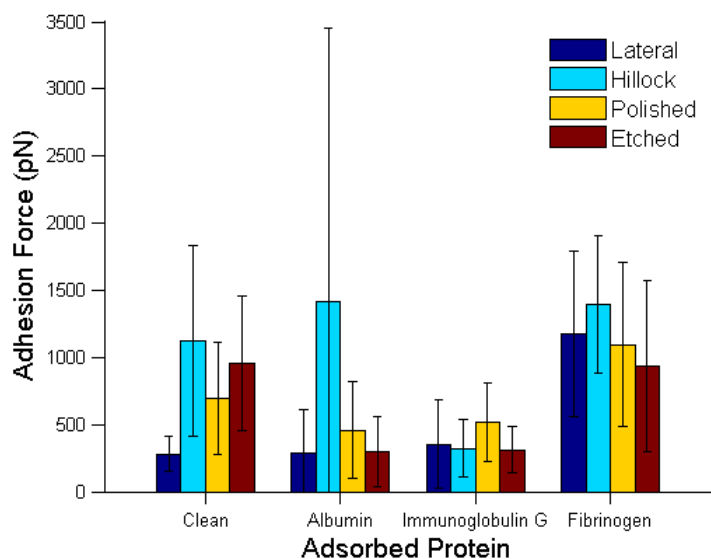
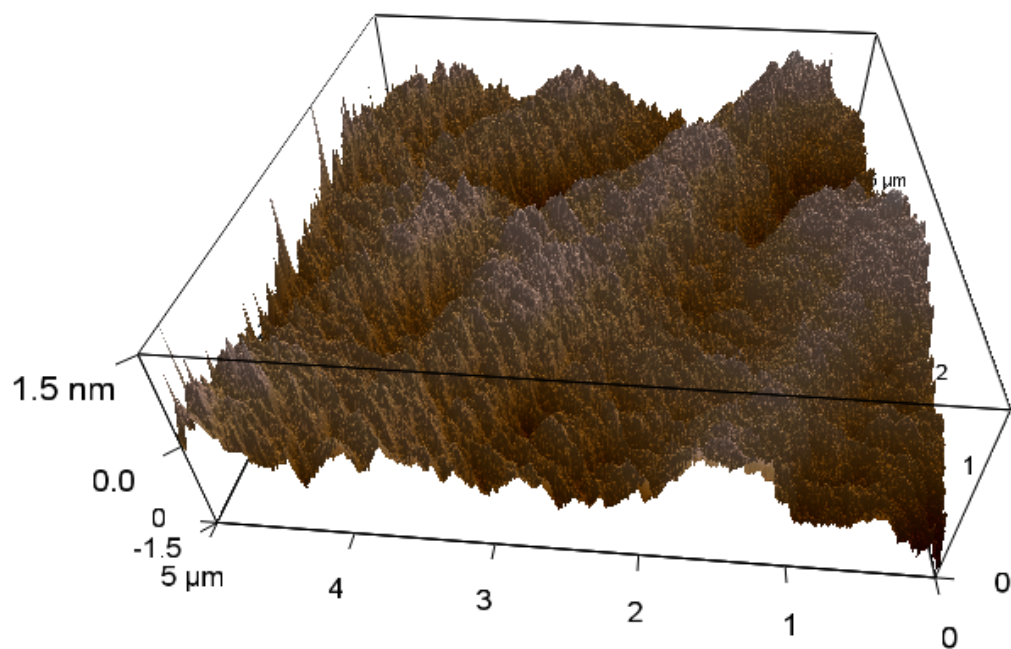


## Supplemental Information: “Adsorption and adhesion of common serum proteins to nanotextured gallium nitride”

Lauren E. Bain<sup>a</sup>, Marc P. Hoffmann<sup>b</sup>, Isaac Bryan<sup>b</sup>, Ramón Collazo<sup>b</sup>, and Albena Ivanisevic<sup>a,b</sup>



**Figure S1** Average adhesion force of “Surface adhesion only” force-distance curves. The high degree of variability in force measurement, represented by the error bars showcasing the standard deviation of the measurement, renders it difficult to discern any compelling change in behavior.



**Figure S2** Height-adjusted lateral GaN with a clearer representation of the surface features. Figure 1 in the full text has a 30 nm height range; here, the height range is 3 nm.