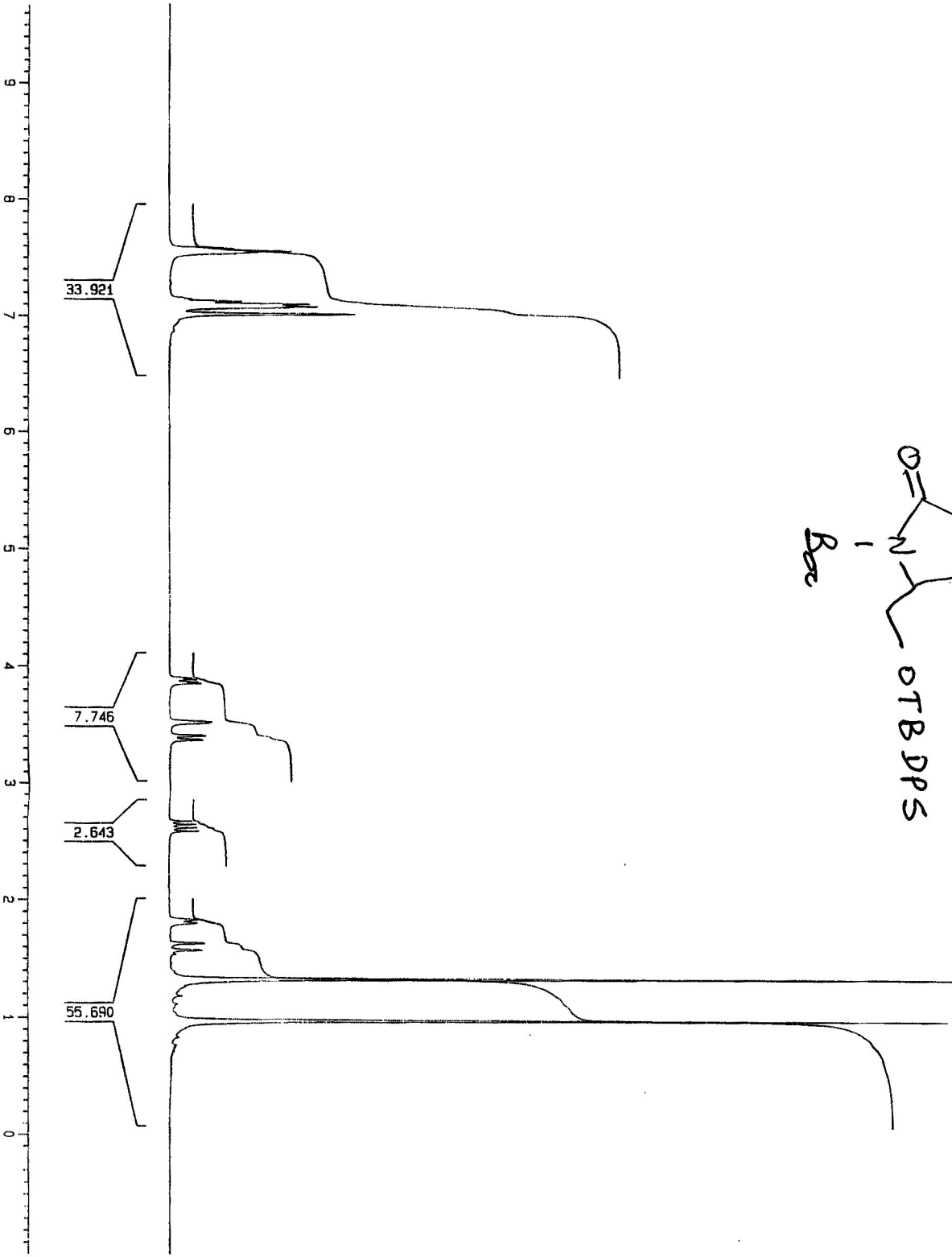
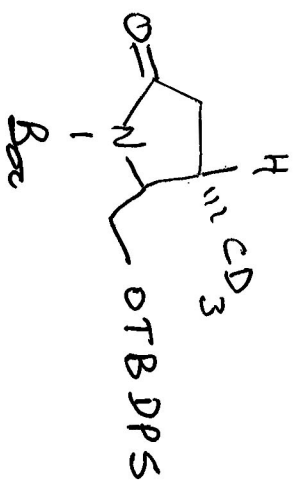


Current Data Parameters
 NAME jec3H
 EXPNO 10
 PROCNO 1



F2 - Acquisition Parameters

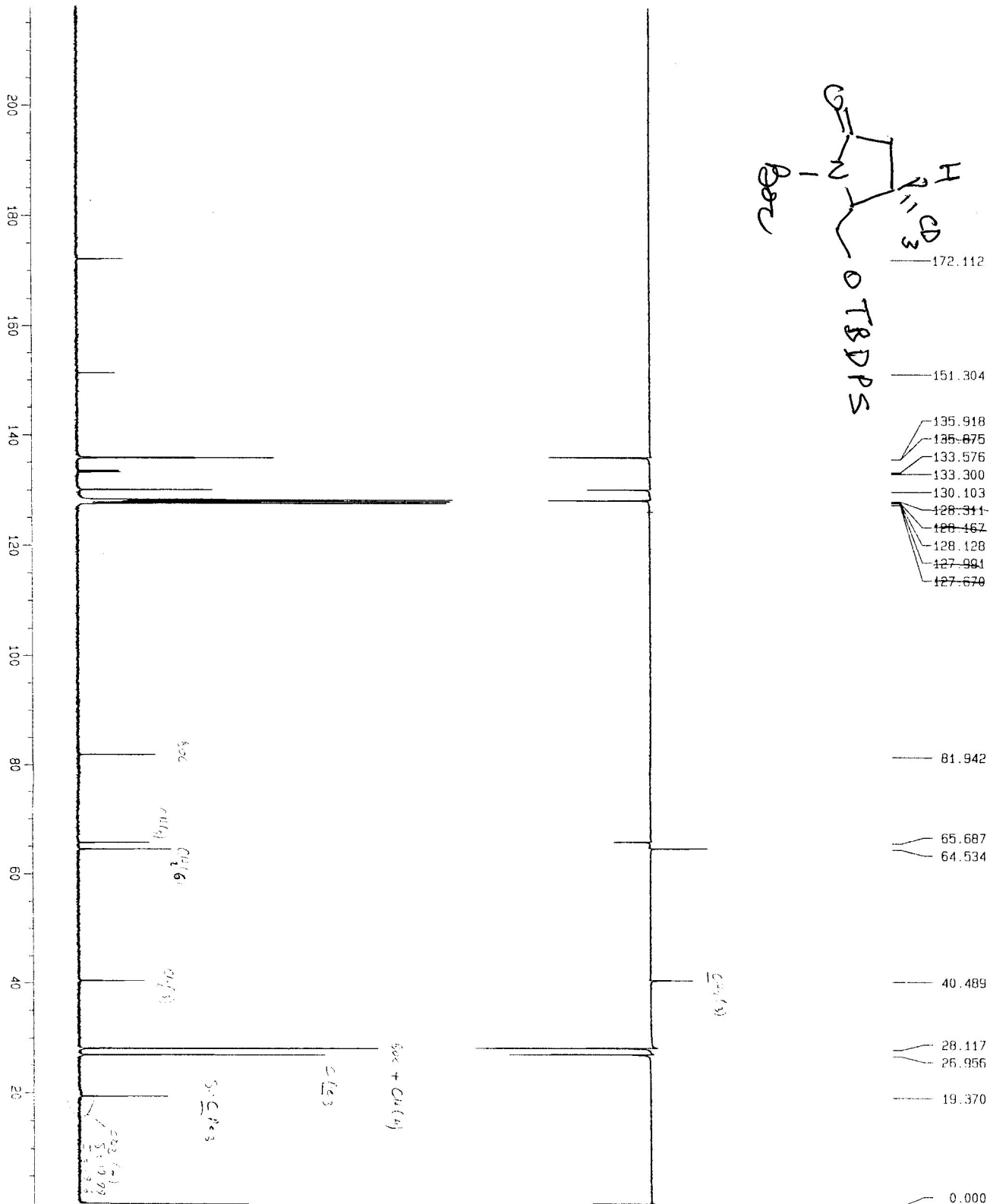
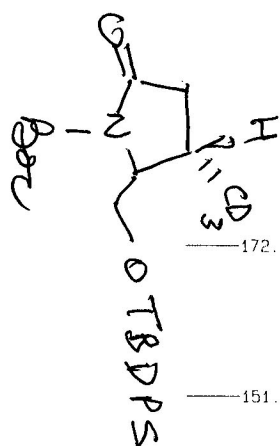
Date_ 971128
 Time 17.07
 INSTRUM dpx300
 PROBH0 5 mm Dual 13
 PULPROG zg30
 TD 32768
 SOLVENT C6D6
 NS 16
 DS 2
 SWH 6172.839 Hz
 FIDRES 0.188360 Hz
 AQ 2.6542560 sec
 RG 181
 DW 81.000 usec
 DE 5.50 usec
 TE 300.0 K
 D1 1.00000000 sec
 P1 10.50 usec
 DE 5.50 usec
 SF01 300.1318534 MHz
 NUC1 1H
 PL1 -6.00 dB

F2 - Processing parameters

SI 16384
 SF 300.1300729 MHz
 MDW EM
 SSB 0
 LB 0.30 Hz
 GB 0
 PC 1.00

1D NMR plot parameters

CX 30.00 cm
 F1P 11.000 ppm
 F1 3301.43 Hz
 F2P -1.000 ppm
 F2 -300.13 Hz
 PPMCM 0.40000 ppm/cm
 HZCM 120.05202 Hz/cm



Current Data Parameters
 NAME jecd3c3
 EXPNO 11
 PROCNO 1

F2 - Acquisition Parameters

Date_ 971202
 Time 22.02
 INSTRUM dpx300
 PROBHD 5 mm Dual 13
 PULPROG zgpg30
 TD 65536
 SOLVENT CDCl3
 NS 256
 DS 2
 SMH 23809.523 Hz
 FIDRES 0.363304 Hz
 AQ 1.3763051 sec
 RG 1024
 DM 21.000 usec
 DE 5.50 usec
 TE 300.0 K
 D12 0.0002000 sec
 PL13 18.00 dB
 D1 1.00000000 sec
 CPDPRG2 waltz16
 PCPD2 100.00 usec
 SF02 300.1312005 MHz
 NUC2 1H
 PL2 -6.00 dB
 PL12 16.00 dB
 P1 6.00 usec
 DE 5.50 usec
 SF01 75.4772501 MHz
 NUC1 13C
 PL1 -3.00 dB
 D11 0.03000000 sec

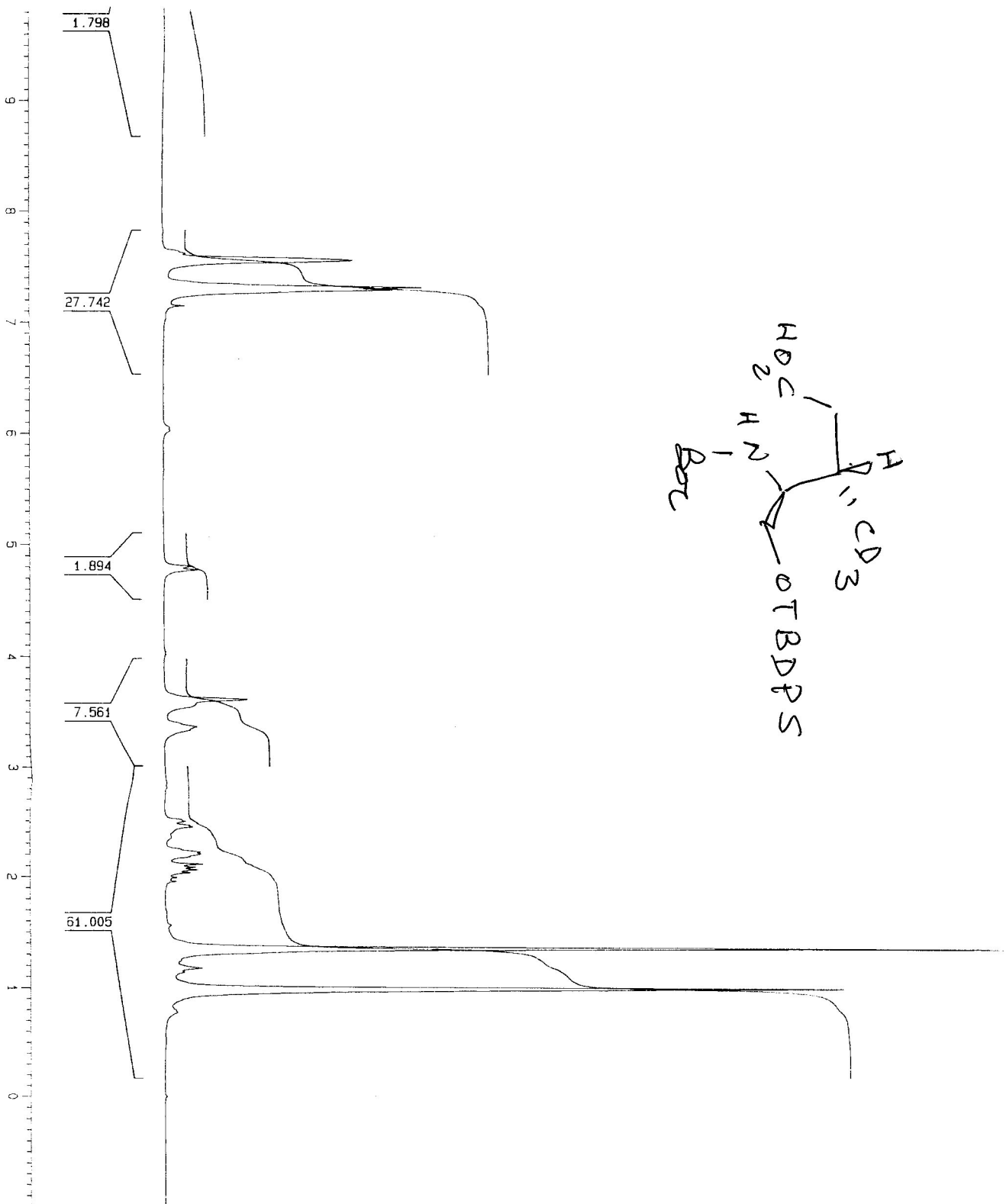
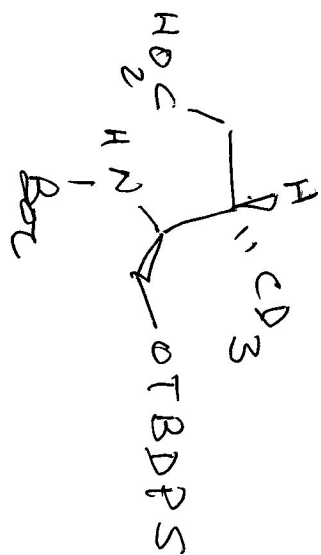
F2 - Processing Parameters

SI 32768
 SF 75.4677330 MHz
 WDM EM
 SSB 0
 LB 1.00 Hz
 GB 0
 PC 1.40

1D NMR plot parameters

CX 30.00 cm
 F1P 240.000 ppm
 F1 18112.26 Hz
 F2P 0.000 ppm
 F2 0.00 Hz
 PPMCM 8.00000 ppm/cm
 HZCM 503.74182 Hz/cm

CD3 ring opening



Current Data Parameters
 Name jeacid
 ExpNo 21
 ProcNo 1

F2 - Acquisition Parameters
 Date_ 9/12/19
 Time 9.39

INSTRUM dpx300
 PROBHD 5 mm Dual 13
 PULPROG zg30
 TD 32768
 SOLVENT CDCl3
 NS 16
 DS 2

SWH 6172.839 Hz
 FIDRES 0.188380 Hz
 AQ 2.6542580 sec
 RG 64

DW 81.000 usec
 DE 5.50 usec
 TE 300.0 K
 O1 1.00000000 sec

P1 10.50 usec
 DE 5.50 usec
 SFO1 300.1318534 MHz
 NUC1 1H
 PL1 -6.00 dB

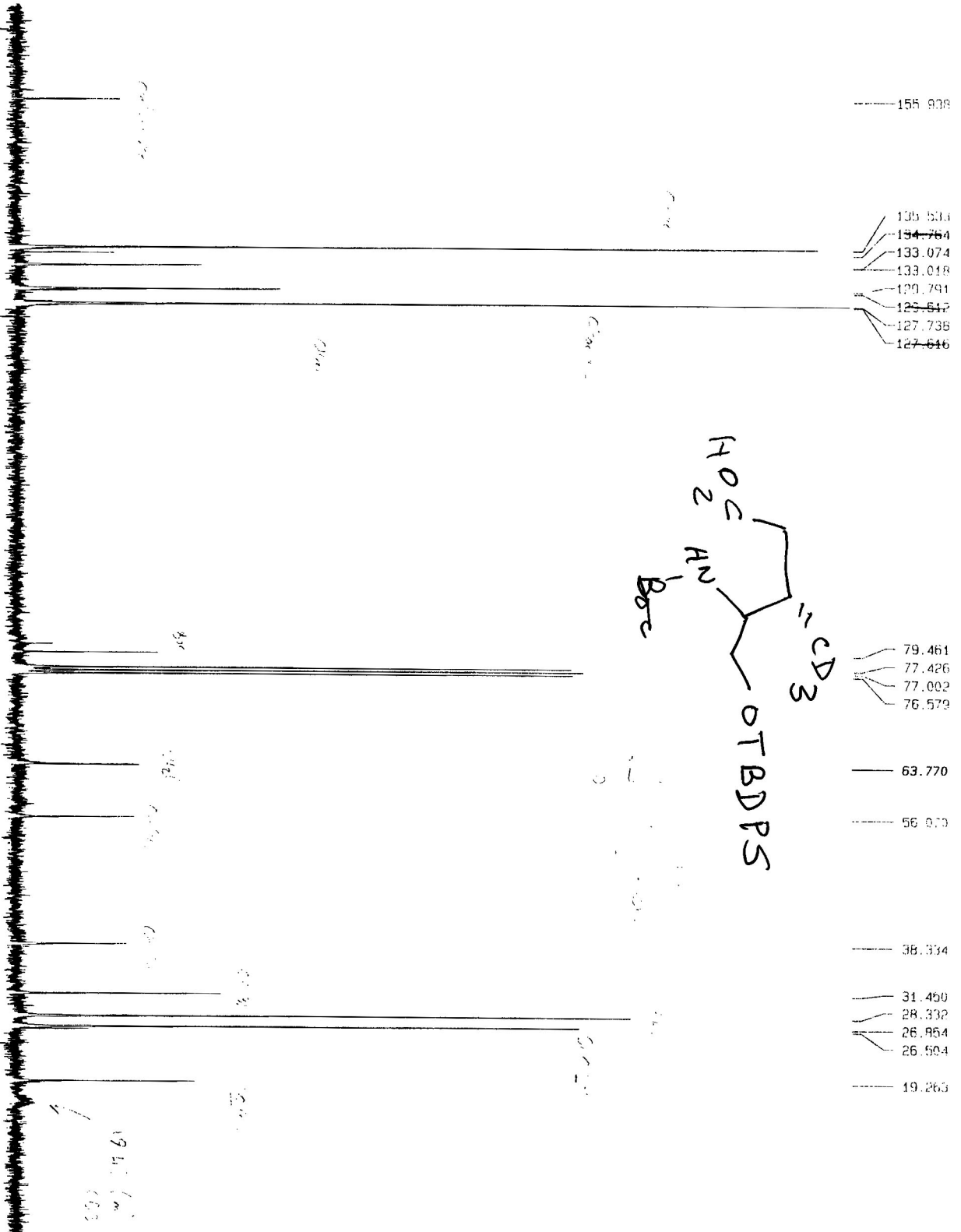
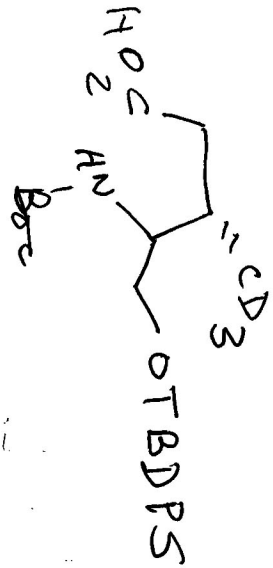
F2 - Processing parameters

SI 16384
 SF 300.1300478 MHz
 MDW EM
 SSB 0
 LB 0.30 Hz
 GB 0
 PC 1.00

1D NMR plot parameters

CX 30.00 cm
 F1P 11.000 ppm
 F1 3301.43 Hz
 F2P -1.000 ppm
 F2 -300.13 Hz
 PPMCM 0.40000 ppm/cm
 HZCM 120.05202 Hz/cm

CD3 ring opening



Current Data Parameters
 NAME jeacid
 EXPNO 22
 PROCNO 1

F2 - Acquisition Parameters
 Date_ 971219
 Time 9.59

INSTRUM dpx300
 PROBHD 5 mm Dual 13
 PULPROG zgpg30
 TD 65536
 SOLVENT C0C13
 NS 256
 DS 2

SWH 23809.523 HZ
 FIDRES 0.363304 HZ
 AQ 1.3763061 sec
 RG 2048

DW 21.000 usec
 DE 5.50 usec
 TE 300.0 K

D12 0.00002000 sec
 PL13 18.00 dB
 J1 3.00000000 sec

CPDPRG2 wait1216
 PCPD2 100.00 usec
 SFO2 300.1312005 MHz

NUC2 1H
 PL2 -6.00 dB
 PL12 16.00 dB

P1 6.00 usec
 DE 5.50 usec
 SFO1 75.4772501 MHz

NUC1 13C
 PL1 -3.00 dB
 D11 0.03000000 sec

F2 - Processing parameters
 SI 32768
 SF 75.4677566 MHz

MDW EM
 SSB 0
 LB 1.00 HZ

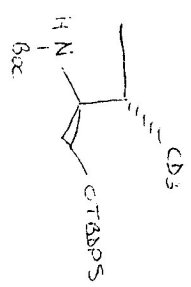
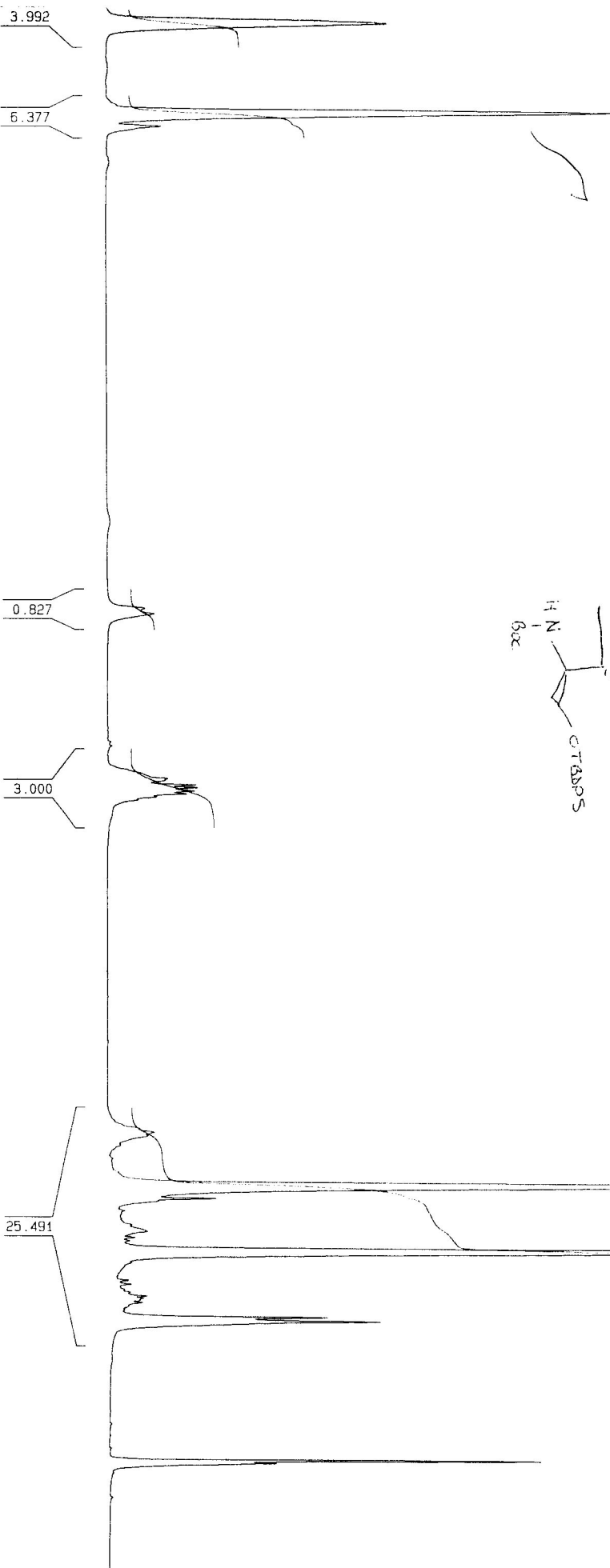
GB 0
 PC 1.40

1D NMR plot parameters
 CX 30.00 cm
 F1P 185.640 DDM

F1 14009.85 HZ
 F2P -1.998 ppm
 F2 -150.77 HZ

PRICHM 6.25460 ppm/cm
 FFCM 472.02957 HZ/cm

7
6
5
4
3
2
1
0



- 7.7156
- 7.4790
- 7.2343
- 7.1654
- 6.9736

5.0382

4.5622
4.5331 } NH ; 4.55

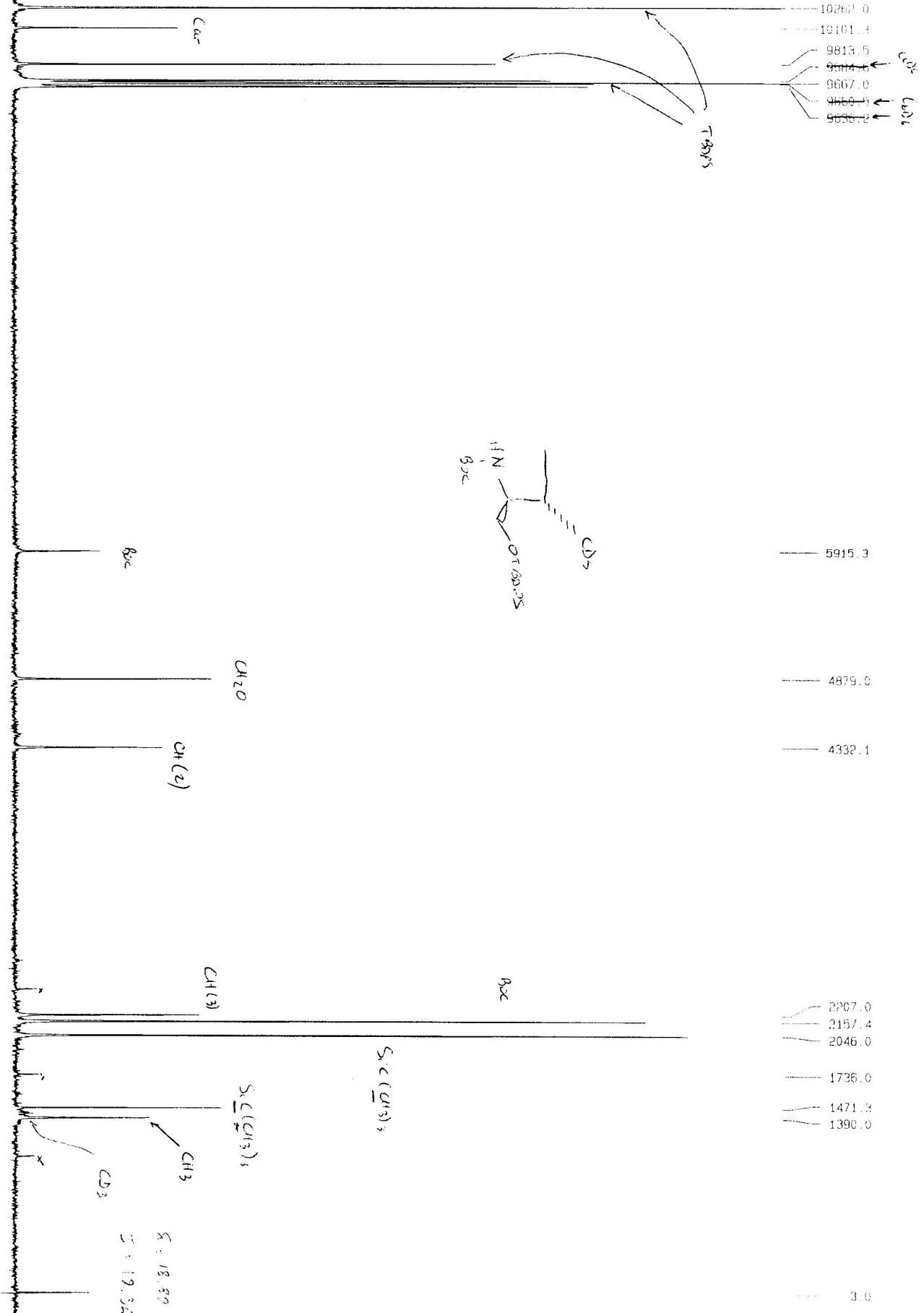
3.6495
3.6164
3.6018
3.5836
3.5678
3.5507 } CH(2)
? 5

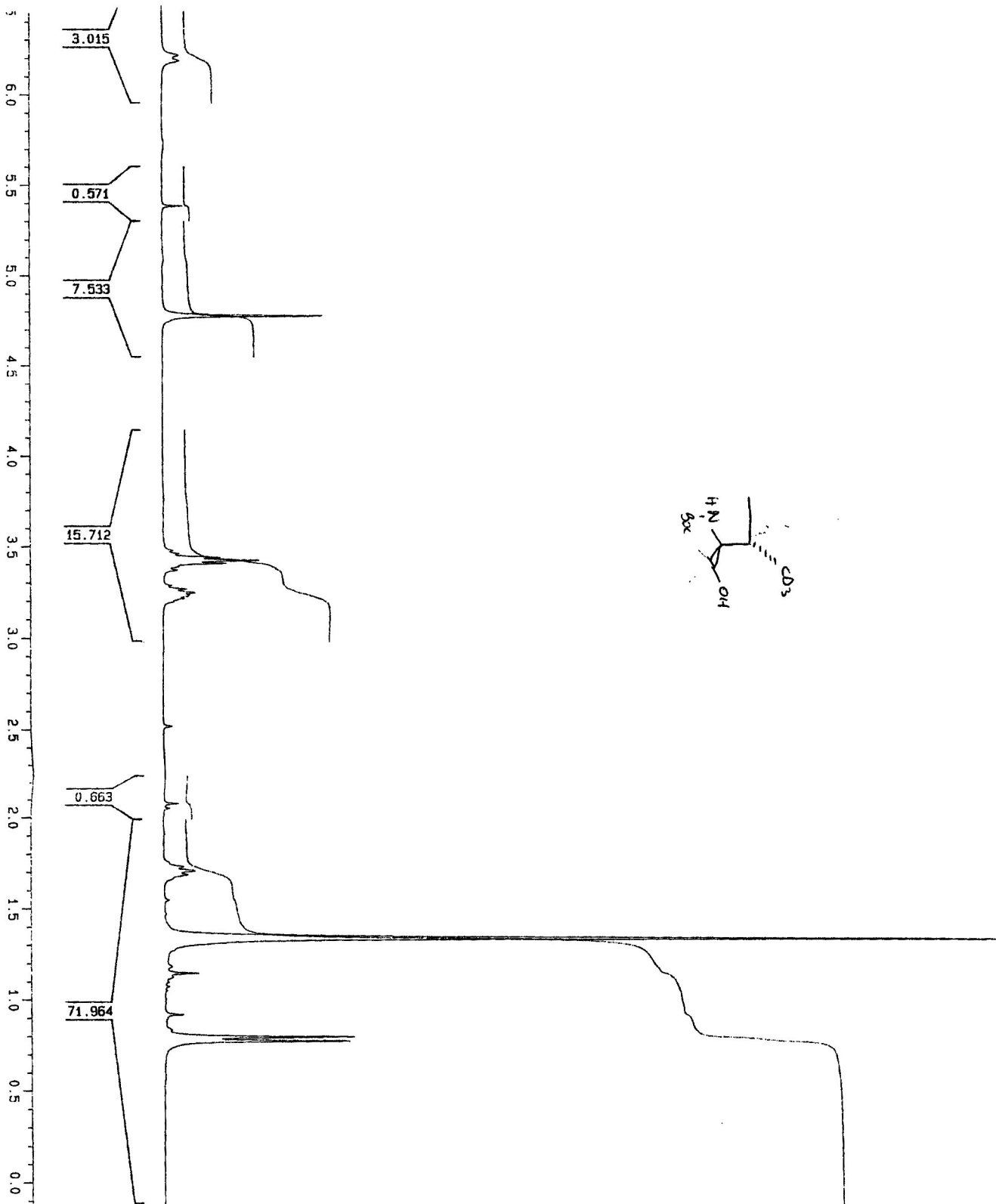
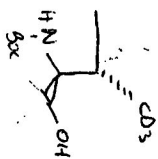
1.7522
1.7327
1.6106
1.4768 } CH(3)
1.4443
1.3269
1.2736
1.2277
1.1444 } Boc

1.1706 } Si-C(CH3)3

0.9680
0.9476
0.9318
0.9045
0.8840
0.8743
0.8628
0.8493
0.7713
0.7493 } CH3, δ = 0.1

0.4367
0.4055
0.4004
0.4139
0.0666
0.1976





Current Data Parameters
 NAME jecd3DH2
 EXPNO 10
 PROCNO 1

F2 - Acquisition Parameters

Date_ 980304
 Time 9.34
 INSTRUM dpx300
 PROBHD 5 mm Dual 13
 PULPROG zg30
 TD 32768
 SOLVENT MeOH
 NS 16
 DS 2
 SMH 6172.839 Hz
 FIDRES 0.188360 Hz
 AQ 2.6542580 sec
 RG 35.9
 DK 81.000 usec
 DE 5.50 usec
 TE 300.0 K
 D1 1.00000000 sec
 P1 10.50 usec
 DE 5.50 usec
 SF01 300.1318534 MHz
 NUC1 1H
 PL1 -5.00 dB

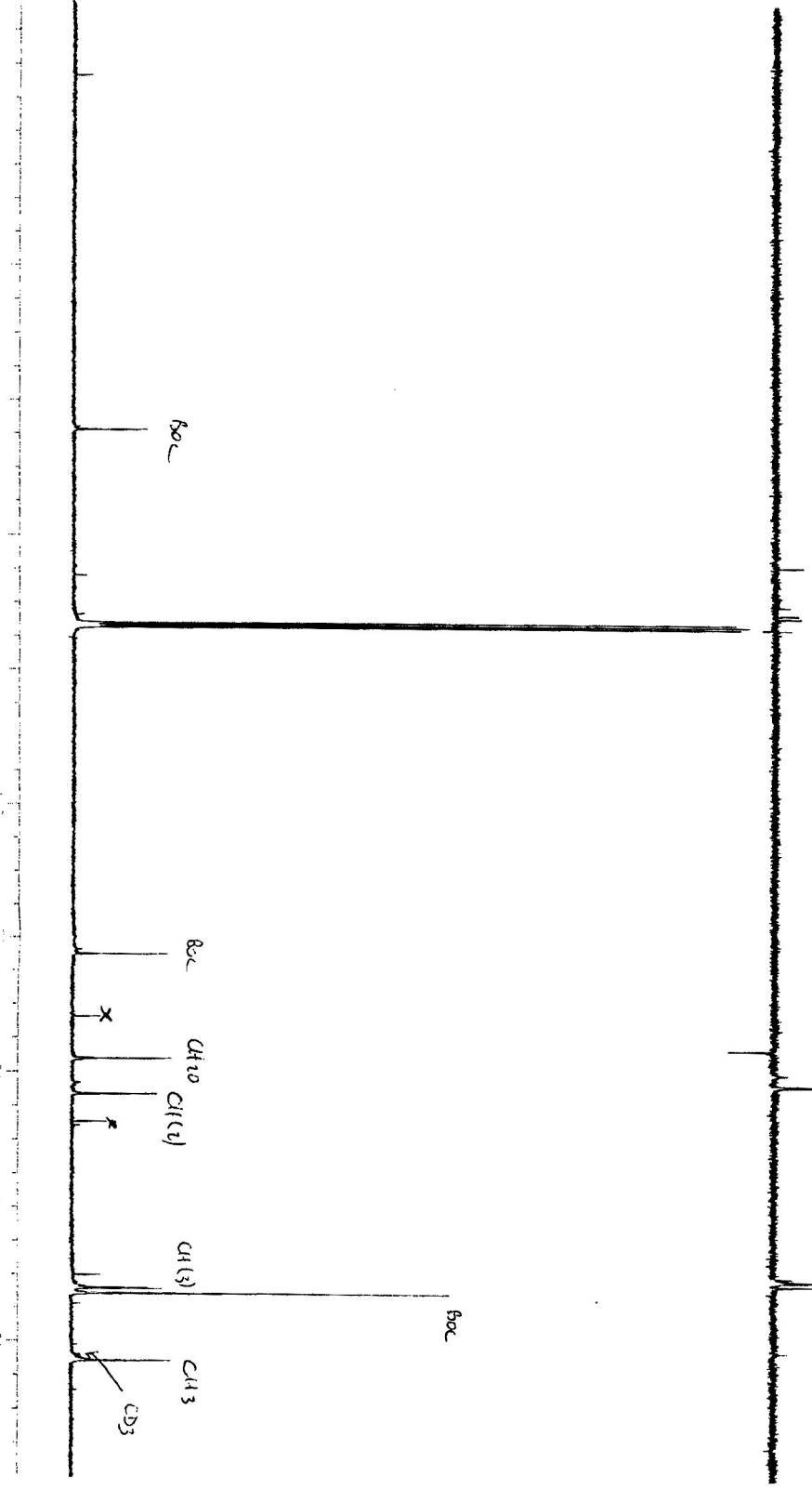
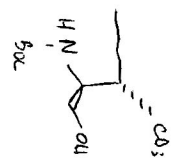
F2 - Processing parameters

SI 16384
 SF 300.1300360 MHz
 MDW EM
 SSB 0
 LB 0.30 Hz
 GB 0
 PC 1.00

1D NMR plot parameters

CX 30.00 cm
 F1P 7.146 ppm
 F1 2144.64 Hz
 F2P -0.113 ppm
 F2 -33.79 Hz
 PPMCH 0.24194 ppm/cm
 HZCH 72.61424 Hz/cm

CD3 silylether deprotection



Current Data Parameters
 NAME J0030H
 EXPNO 12
 PROCNO 1

F2 - Acquisition Parameters

Date_ 980226
 Time 3.46
 INSTRUM dpx300
 PROBD 5 mm Dual 13
 PULPROG zgpg30
 TD 65536
 SOLVENT CDCl3
 NS 256
 DS 2
 SMH 23809.523 HZ
 FIDRES 0.363304 HZ
 AQ 1.3763061 sec
 RG 3649.1
 DW 21.000 usec
 DE 5.50 usec
 TE 300.0 K
 D12 0.00002000 sec
 PL13 18.00 dB
 D1 3.00000000 sec
 waltz16
 PCPRG2 100.00 usec
 SF02 300.1312005 MHz
 NUC2 1H
 PL2 -6.00 dB
 PL12 16.00 dB
 P1 5.00 usec
 DE 5.50 usec
 SF01 75.4772501 MHz
 NUC1 13C
 PL1 -3.00 dB
 D11 0.03000000 sec

F2 - Processing parameters

SI 32768
 SF 75.4678319 MHz
 MDW EM
 SSB 0
 LB 1.00 Hz
 GB 0
 PC 1.40

1D NMR plot parameters

CX 30.00 cm
 F1P 240.000 ppm
 F1 18112.28 Hz
 F2P 0.000 ppm
 F2 0.00 Hz
 PPMCM 8.00000 ppm/cm
 HZCM 603.74261 Hz/cm

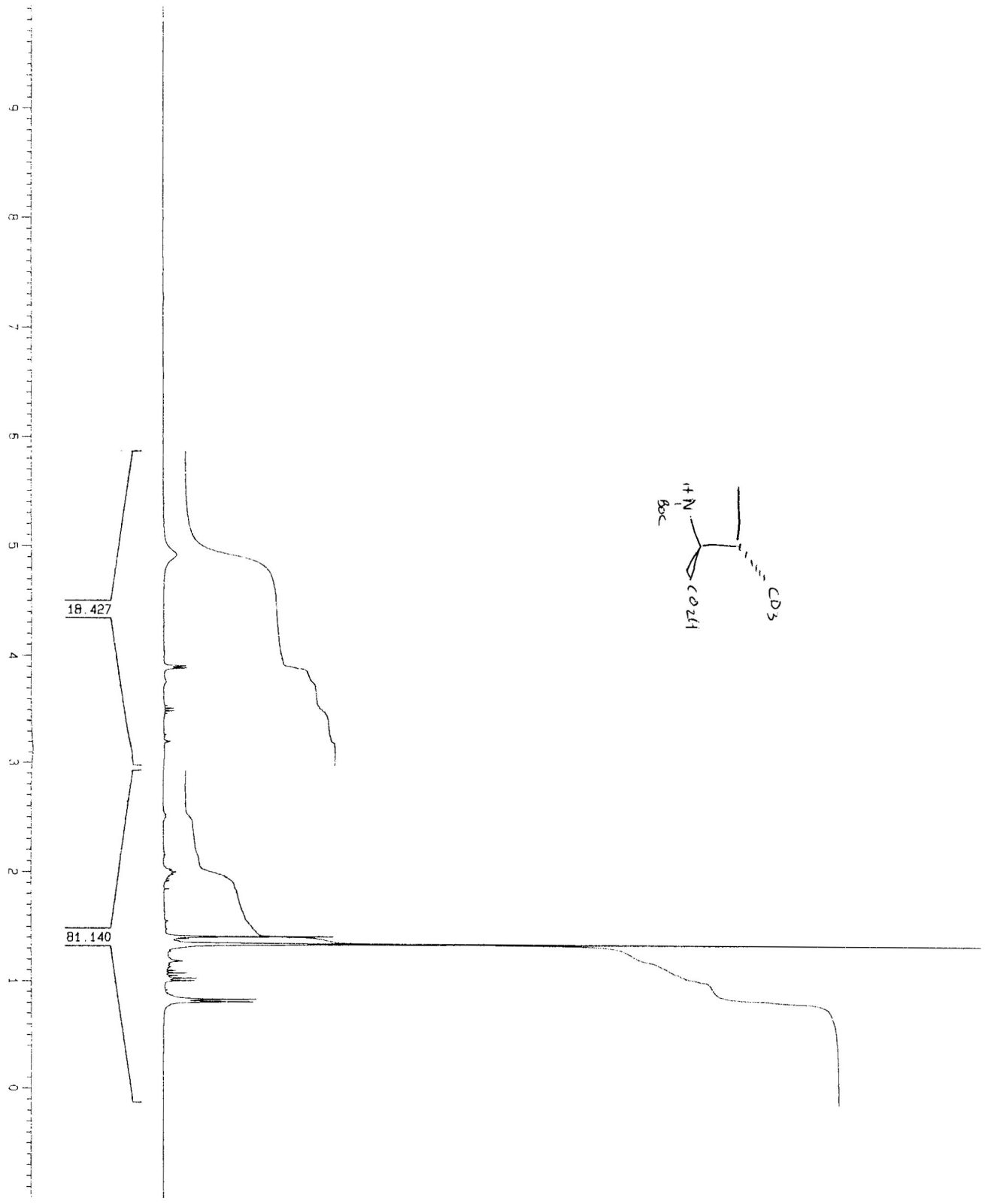
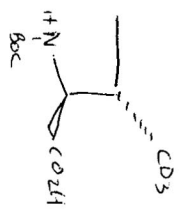
Current Data Parameters
 NAME je-2
 EXNO 10
 PROCNO 1

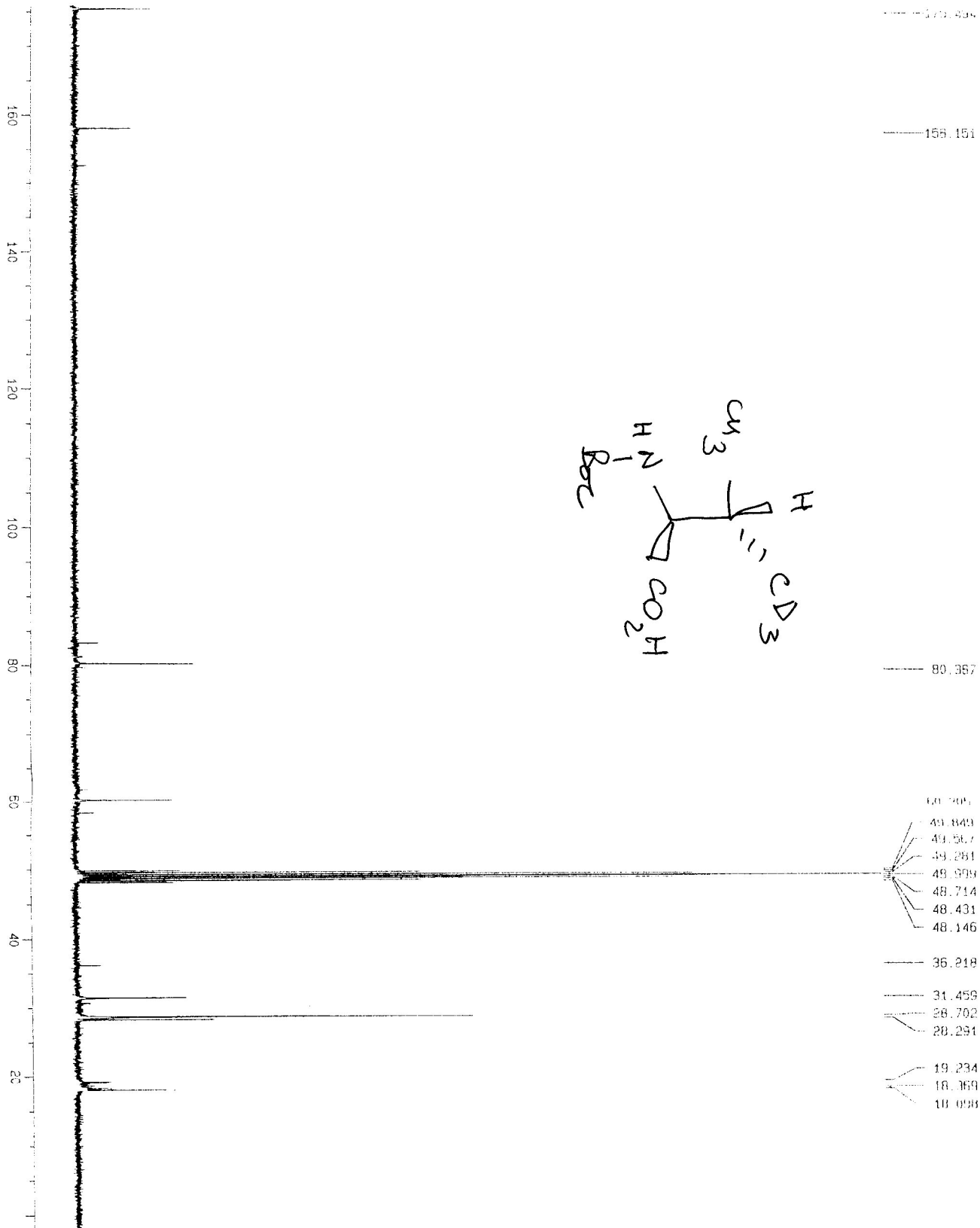
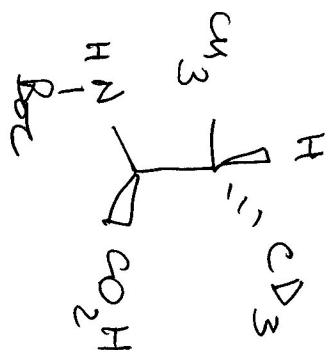
F2 - Acquisition Parameters
 Date_ 980305
 Time 12.21
 INSTRUM dpx300
 PROBD 5 mm Dui1 13
 PULPROG zg30
 TD 32768
 SOLVENT MeOH
 NS 16
 DS 2

SWH 6172.839 Hz
 FIDRES 0.169380 Hz
 AQ 2.8542580 sec
 RG 90.5
 DW 81.000 usec
 DE 5.50 usec
 TE 300.0 K
 O1 1.00000000 sec
 P1 10.50 usec
 DE 5.50 usec
 SF01 300.1318534 MHz
 NUC1 1H
 PL1 -6.00 dB

F2 - Processing parameters
 SI 16384
 SF 300.1300343 MHz
 WDW EM
 SSB 0
 LB 0.30 Hz
 GB 0
 PC 1.00

1D NMR plot parameters
 CX 30.00 cm
 F1P 11.000 ppm
 F1 3301.43 Hz
 F2P -1.000 ppm
 F2 -300.13 Hz
 PPMCM 0.40000 ppm/cm
 HZCM 120.05202 Hz/cm





Current Data Parameters
 NAME j903Val1
 EXPNO 11
 PROCNO 1

F2 - Acquisition Parameters
 Date_ 980305
 Time 21.17
 INSTRUM dpx300
 PROBRWD 5 mm Dual 13
 PULPROG zgpg30
 TD 65536
 SOLVENT MeOH
 NS 256
 DS 2
 SMH 23809.523 Hz
 FIDRES 0.363304 Hz
 AQ 1.3763061 sec
 RG 1149.4
 DM 21.000 usec
 DE 5.50 usec
 TE 300.0 K
 D12 0.00002000 sec
 PL13 18.00 dB
 D1 3.00000000 sec
 CPDPRG2 waltz15
 PCPD2 100.00 usec
 SF02 300.1312005 MHz
 NUQ2 1H
 PL2 -6.00 dB
 PL12 16.00 dB
 P1 6.00 usec
 DE 5.50 usec
 SF01 75.4772501 MHz
 NUC1 13C
 PL1 -3.00 dB
 D11 0.03000000 sec

F2 - Processing parameters
 SI 32768
 SF 75.4576494 MHz
 WDM EM
 SSB 0
 LB 1.00 Hz
 GB 0
 PC 1.40

1D NMR plot parameters
 CX 30.00 cm
 F1p 189.227 ppm
 F1 14280.55 Hz
 F2p -1.998 ppm
 F2 -150.77 Hz
 PPMCM 6.37417 ppm/cm
 HZCM 431.04379 Hz/cm

Current Data Parameters
 NAME jefbart
 EXPNO 11
 PROCNO 1

F2 - Acquisition Parameters

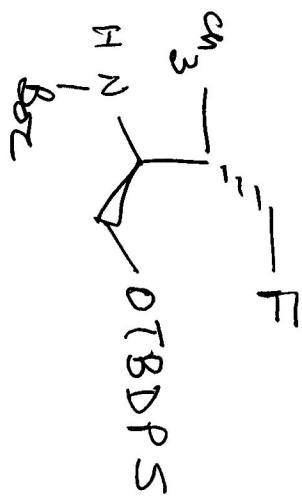
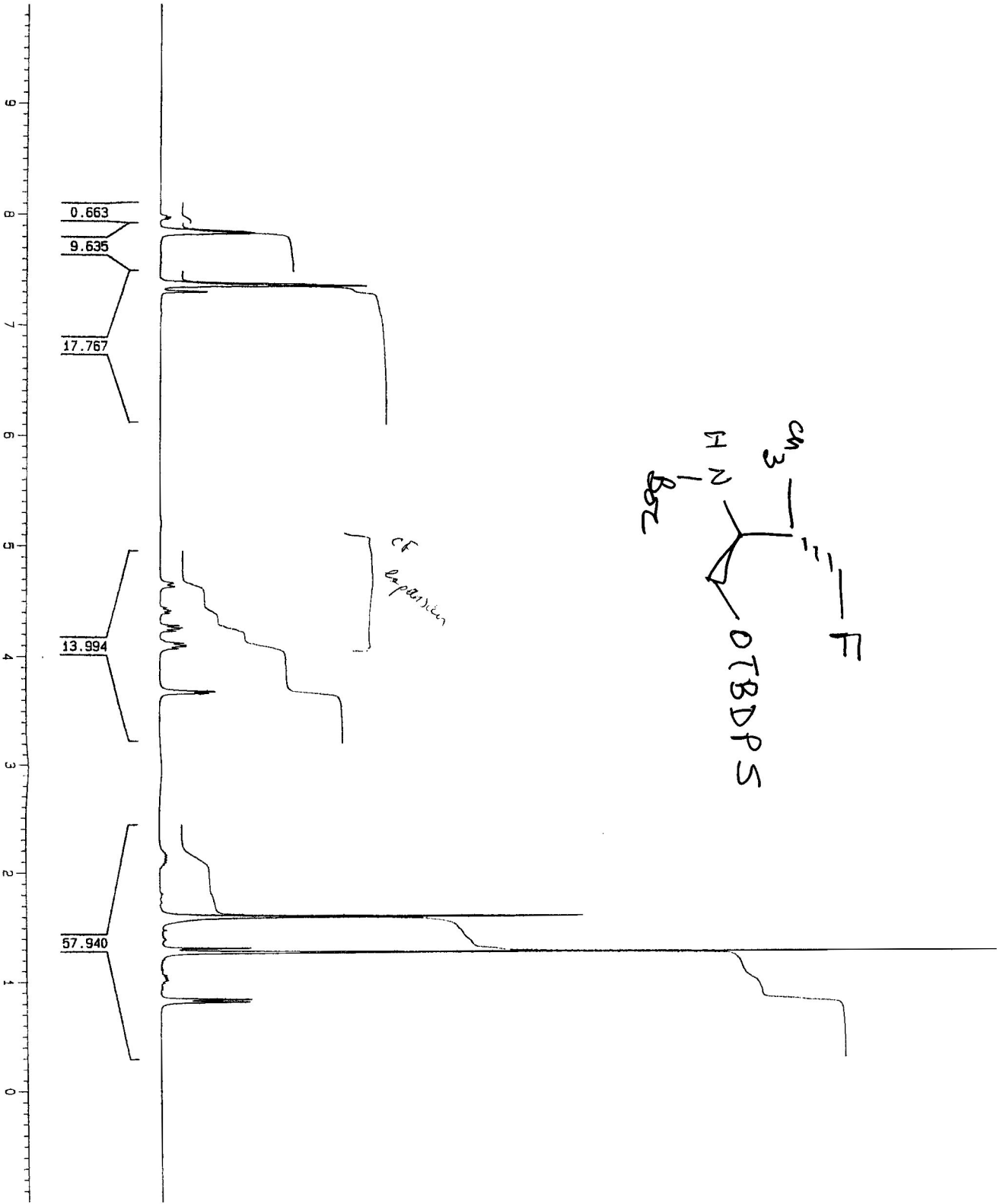
Date_ 980512
 Time 17.17
 INSTRUM dpx300
 PROBHD 5 mm Dual 13
 PULPROG zg30
 TD 32768
 SOLVENT CDCl3
 NS 16
 DS 2
 SWH 6172.839 Hz
 FIDRES 0.188380 Hz
 AQ 2.6542580 sec
 RG 64
 DW 81.000 usec
 DE 5.50 usec
 TE 300.0 K
 D1 1.00000000 sec
 P1 10.50 usec
 DE 5.50 usec
 SFO1 300.1318534 MHz
 NUC1 1H
 PL1 -6.00 dB

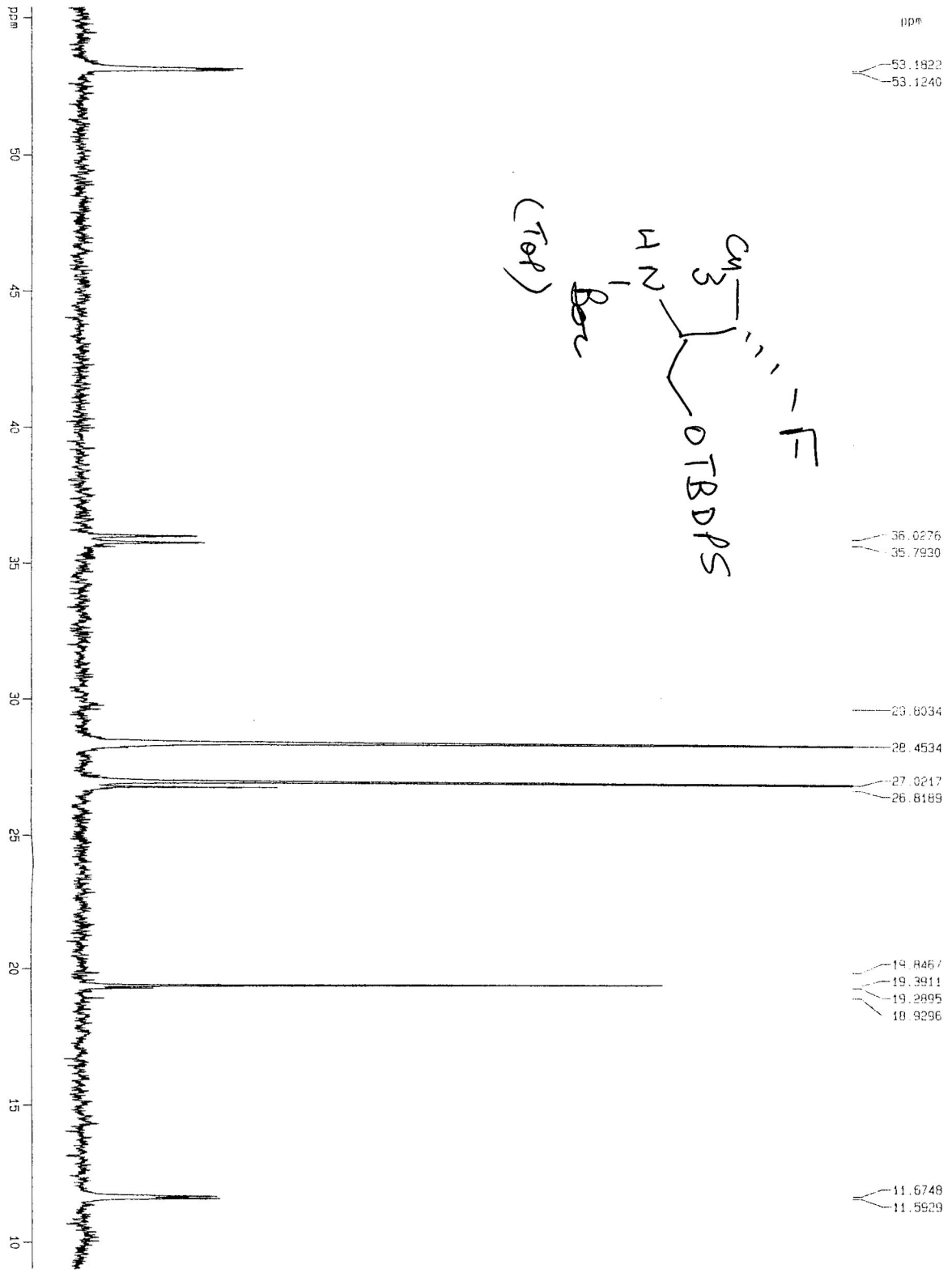
F2 - Processing parameters

SI 16384
 SF 300.1299851 MHz
 MDW EM
 SSB 0
 LB 0.30 Hz
 GB 0
 PC 1.00

1D NMR plot parameters

CX 30.00 cm
 F1P 11.000 ppm
 F1 3301.43 Hz
 F2P -1.000 ppm
 F2 -300.13 Hz
 PPMCM 0.40000 ppm/cm
 HZCM 420.05199 Hz/cm





Current Data Parameters
 NAME jetbart
 EXPNO 12
 PROCNO 1

F2 - Acquisition Parameters
 Date_ 980509
 Time 9.53

INSTRUM dpx300
 PROBHD 5 mm Dual 13
 PULPROG zgpg30
 TD 65536
 SOLVENT CDCl3
 NS 256
 DS 2

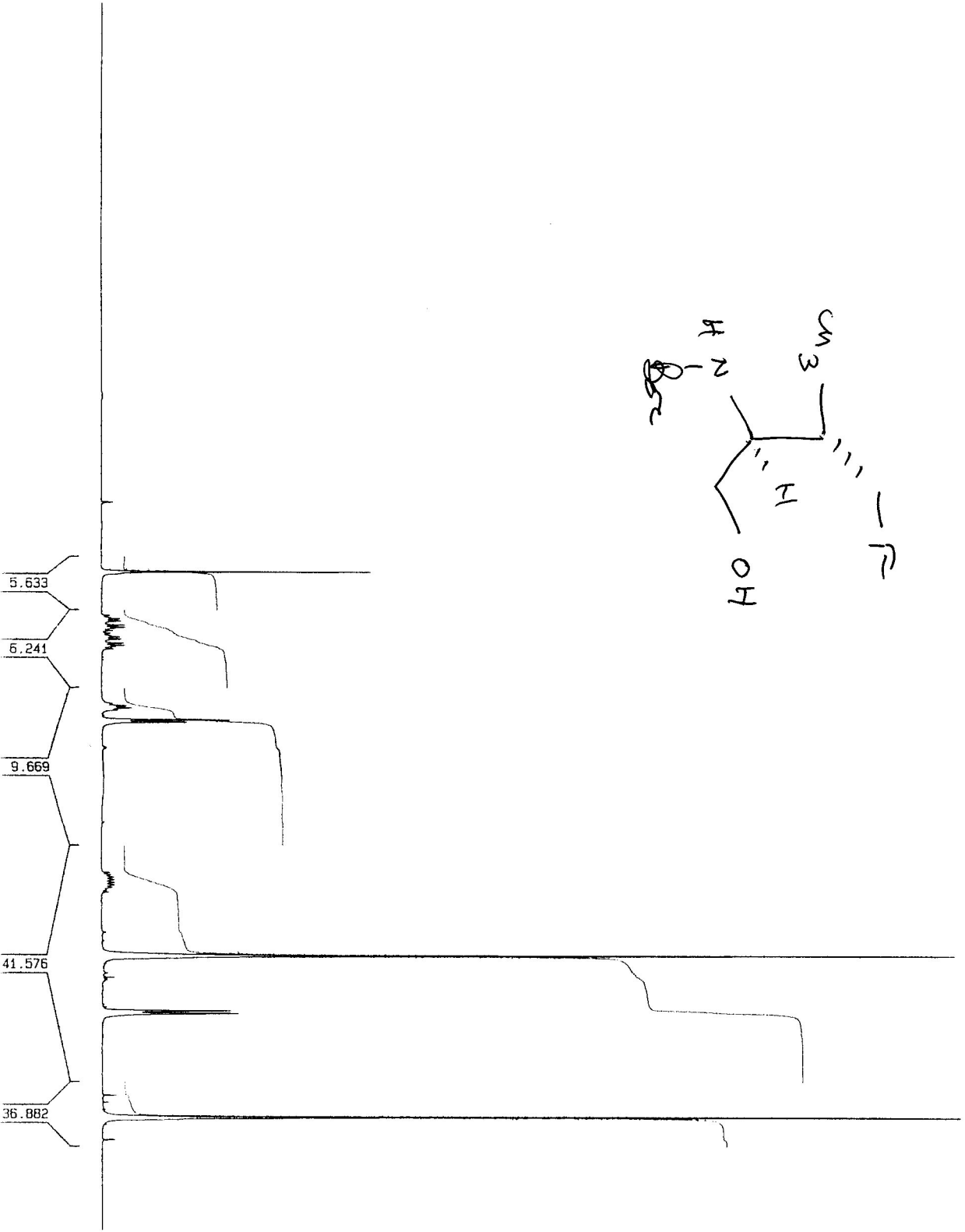
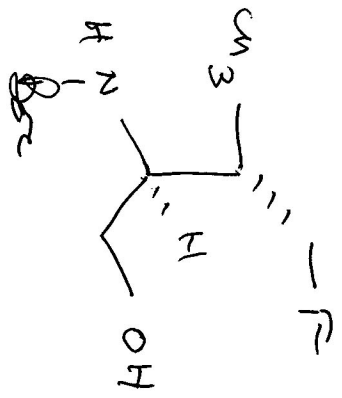
SMH 23809.523 Hz
 FIDRES 0.363304 Hz
 AQ 1.3763061 sec
 RG 574.7
 DE 21.000 usec
 TE 300.0 K

D12 0.00002000 sec
 PL13 18.00 dB
 D1 3.00000000 sec
 waitz16

PCPDPRG2 100.00 usec
 PCPD2 300.1312005 MHz
 SF02 130
 NUC1 13C
 PL1 -3.00 dB
 D11 0.03000000 sec

F2 - Processing parameters
 SI 32768
 SF 75.4677333 MHz
 WDM EM
 SSB 0
 LB 1.00 Hz
 GB 0
 PC 1.40

1D NMR plot parameters
 CX 30.00 cm
 F1P 55.397 ppm
 F1 4180.71 Hz
 F2P 9.040 ppm
 F2 682.21 Hz
 PPMCK 1.54525 ppm/cm
 HZCM 116.61681 Hz/cm



Current Data Parameters
 NAME jefoh2
 EXPNO 11
 PROCNO 1

F2 - Acquisition Parameters

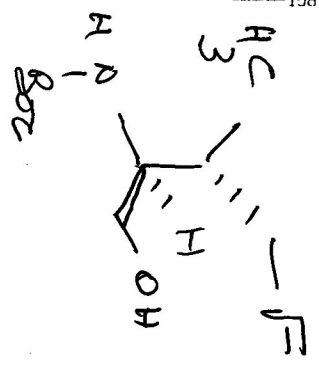
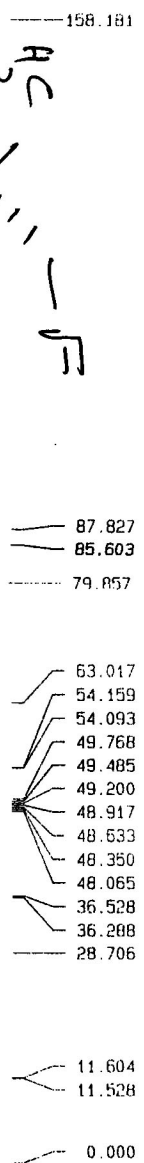
Date_ 980526
 Time 18.45
 INSTRUM dpx300
 PROBHD 5 mm Dual 13
 PULPROG zg30
 TD 32768
 SOLVENT MeOH
 NS 16
 DS 2
 SWH 6172.839 Hz
 FIDRES 0.188380 Hz
 AQ 2.8542580 sec
 RG 35.9
 DW 81.000 usec
 DE 5.50 usec
 TE 300.0 K
 D1 1.00000000 sec
 P1 10.50 usec
 DE 5.50 usec
 SFO1 300.1318534 MHz
 NUC1 1H
 PL1 -6.00 dB

F2 - Processing parameters

SI 16384
 SF 300.1300063 MHz
 MDW EM
 SSB 0
 LB 0.30 Hz
 GB 0
 PC 1.00

1D NMR plot parameters

CX 30.00 cm
 F1P 11.000 ppm
 F1 3301.43 Hz
 F2P -1.000 ppm
 F2 -300.13 Hz
 PPMCM 0.40000 ppm/cm
 HZCM 120.05200 Hz/cm



Current Data Parameters
 NAME jefch2
 EXPNO 12
 PROCNO 1

F2 - Acquisition Parameters

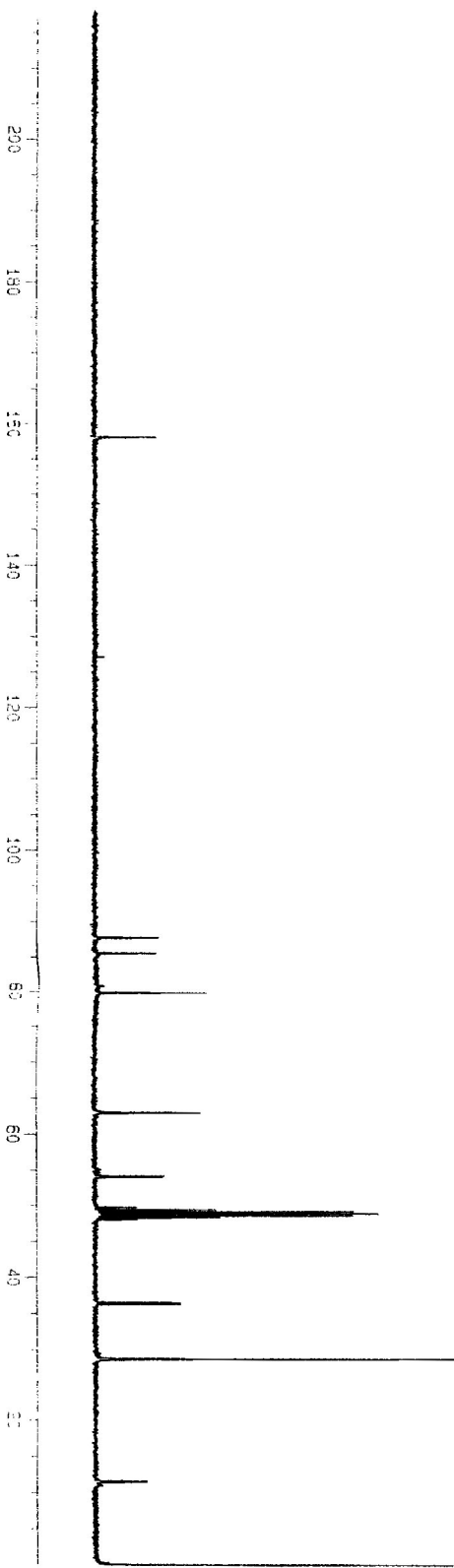
Date_ 980526
 Time 19.04
 INSTRUM dpx300
 PROBNM 5 mm Dual 13
 PULPROG zgpg30
 TD 65536
 SOLVENT MeOH
 NS 256
 DS 2
 SMH 23809.523 Hz
 FIDRES 0.363304 Hz
 AQ 1.3763061 sec
 RG 3649.1
 DM 21.000 usec
 DE 5.50 usec
 TE 300.0 K
 D12 0.00002000 sec
 PL13 18.00 dB
 D1 3.00000000 sec
 CPDPRG2 waitz16
 PCPD2 100.00 usec
 SF02 300.1312005 MHz
 NUC2 1H
 PL2 -6.00 dB
 PL12 16.00 dB
 P1 6.00 usec
 DE 5.50 usec
 SF01 75.4772501 MHz
 NUC1 13C
 PL1 -3.00 dB
 D11 0.030000000 sec

F2 - Processing parameters

SI 32768
 SF 75.4676545 MHz
 MDW EM
 SSB 0
 LB 1.00 Hz
 GB 0
 PC 1.40

1D NMR plot parameters

CX 30.00 cm
 F1P 240.000 ppm
 F1 18112.23 Hz
 F2P 0.000 ppm
 F2 0.00 Hz
 PPMCM 8.00000 ppm/cm
 HZCM 603.74115 Hz/cm



Current Data Parameters
 NAME jvalif
 EXPNO 11
 PROCNO 1

F2 - Acquisition Parameters
 Date_ 980924
 Time 22.14

INSTRUM dpx300
 PROCBD 5 mm Dual 13
 PULPROG zg30
 TD 32768
 SOLVENT MeOH
 NS 16
 DS 2

SWH 6172.839 Hz
 FIDRES 0.188380 Hz
 AQ 2.6542580 sec
 RG 181

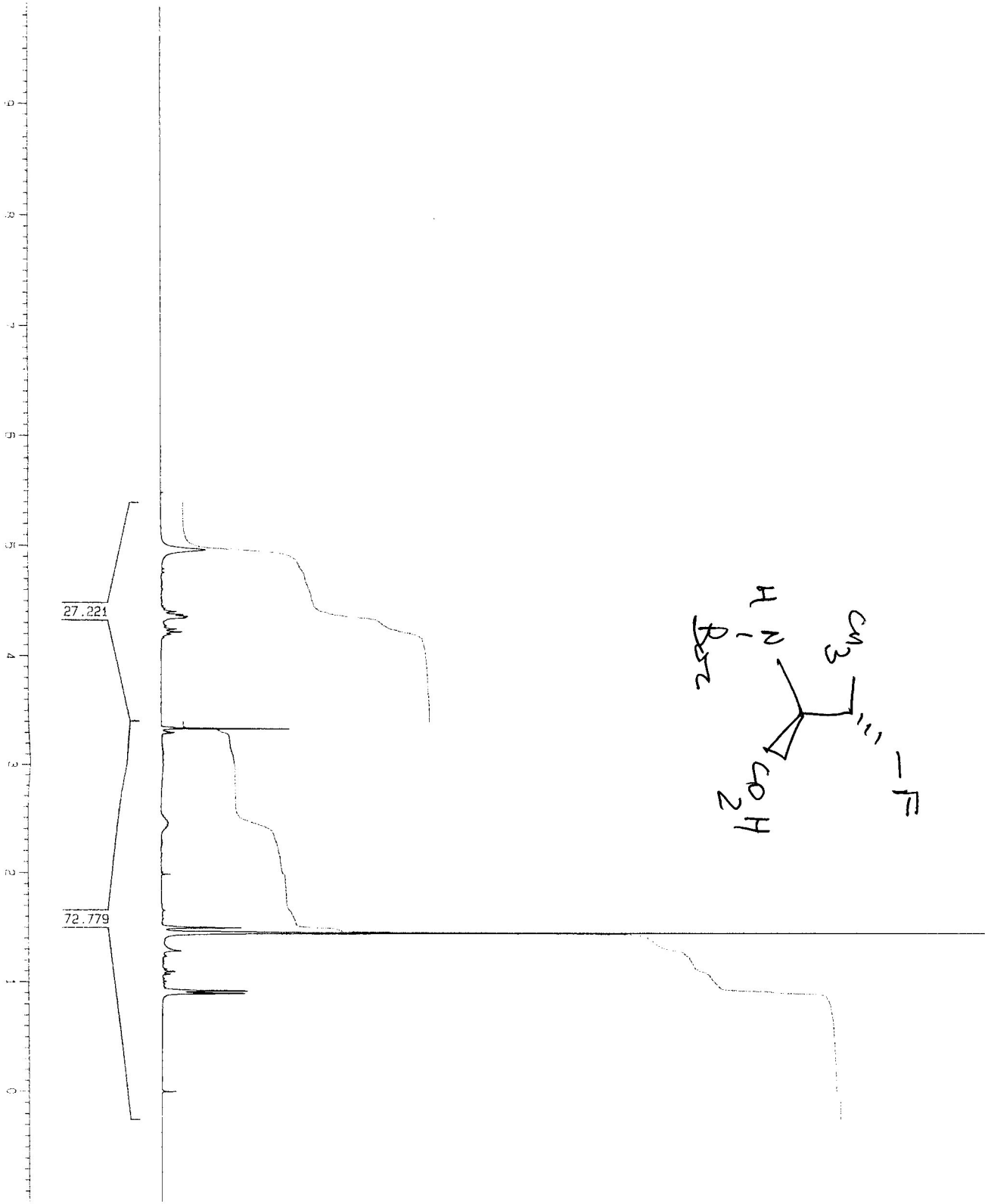
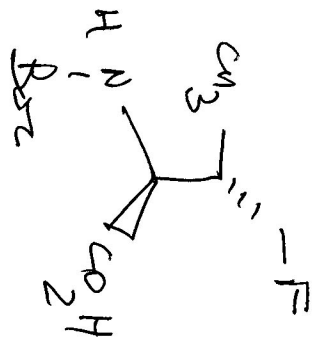
DE 81.000 usec
 TE 300.0 K
 D1 1.00000000 sec
 P1 10.50 usec
 DE 5.50 usec
 SF01 300.1318534 MHz
 NUC1 1H
 PL1 -6.00 dB

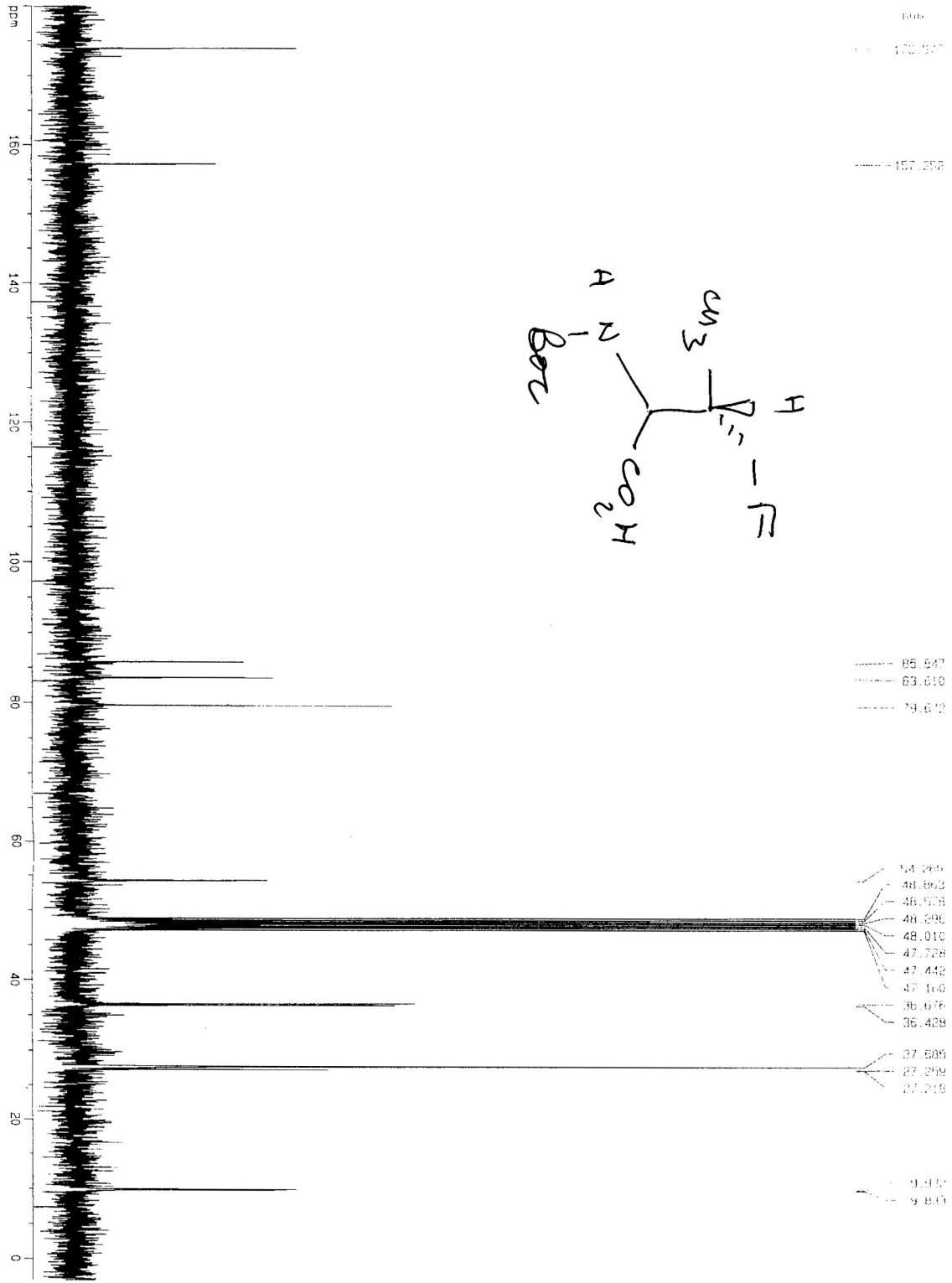
F2 - Processing parameters

SI 15384
 SF 300.1300058 MHz
 MDW EM
 SSB 0
 LB 0.30 Hz
 GB 0
 PC 1.00

1D NMR plot parameters

CX 30.00 cm
 F1P 11.000 ppm
 F1 3301.43 Hz
 F2P -1.000 ppm
 F2 -300.13 Hz
 PPMCM 0.40000 ppm/cm
 HZCM 120.05200 Hz/cm





Current Data Parameters
 NAME JevallF
 EXPNO 12
 PROCNO 1

F2 - Acquisition Parameters

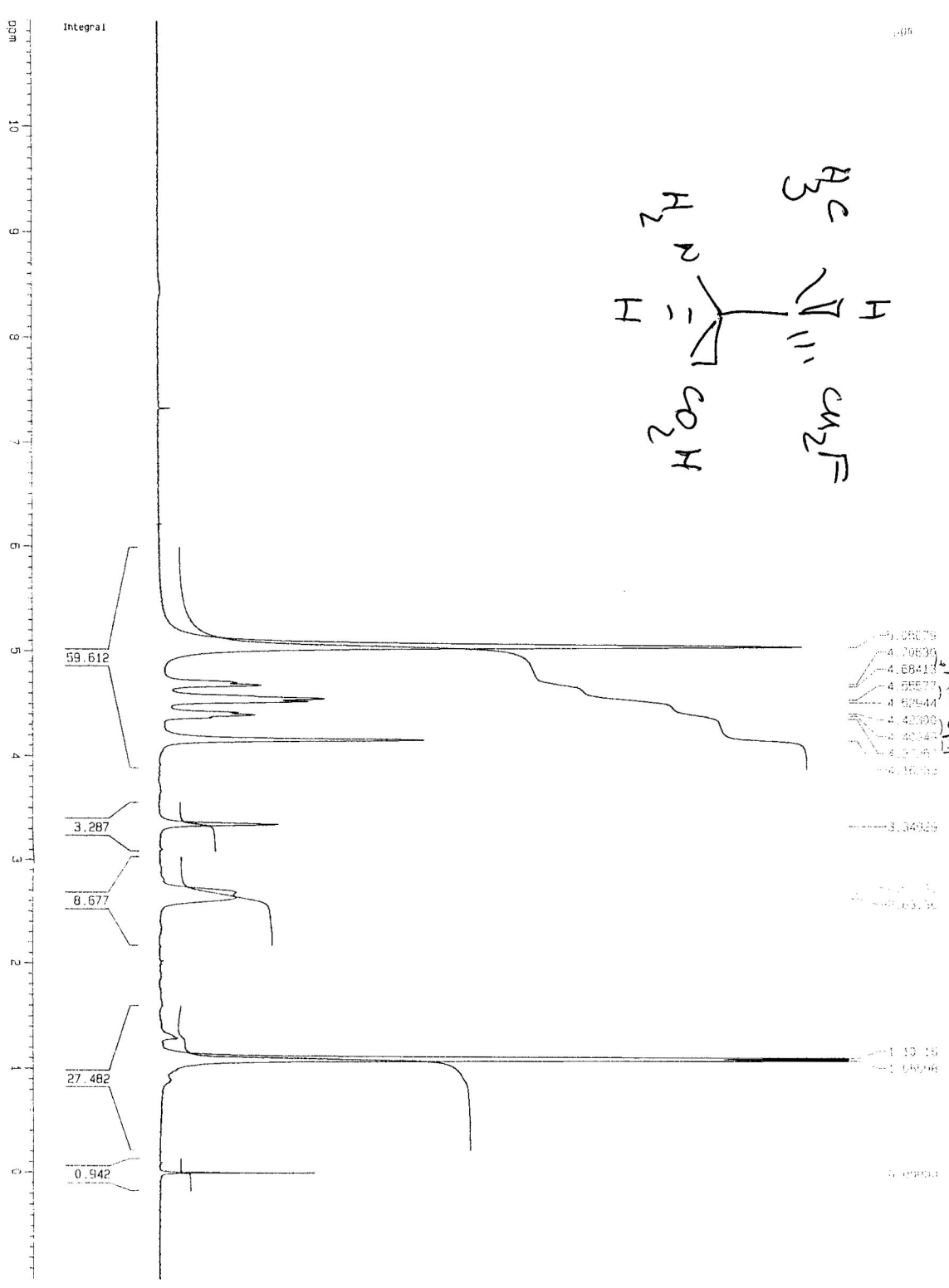
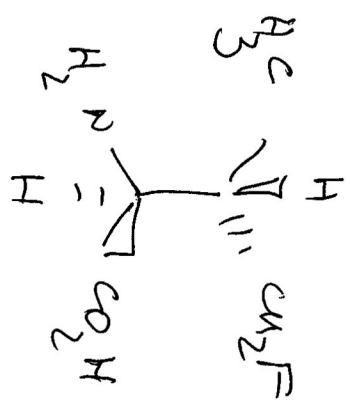
Date_ 980924
 Time 22.34
 INSTRUM dx300
 PROBHD 5 mm Dual 13
 PULPROG zgpg30
 TD 65536
 SOLVENT MeOH
 NS 286
 DS 2
 SWH 23809.523 Hz
 FIDRES 0.365304 Hz
 AQ 1.3763061 sec
 RG 1149.4
 DM 21.000 usec
 DE 5.50 usec
 TE 300.0 K
 D12 0.00002000 sec
 PL13 18.00 dB
 D1 3.00000000 sec
 CPDPRG2 waltz16
 PCPD2 100.00 usec
 SF02 300.1312005 MHz
 NUC2 1H
 PL2 -6.00 dB
 PL12 16.00 dB
 P1 6.00 usec
 DE 5.50 usec
 SF01 75.4772501 MHz
 NUC1 13C
 PL1 -3.00 dB
 D11 0.03000000 sec

F2 - Processing parameters

SF 32768
 SF 75.4677190 MHz
 WDM EM
 SSB 0
 LB 1.00 Hz
 GB 0
 PC 1.40

1D NMR plot parameters

CX 30.00 cm
 F1P 190.104 DDM
 F1 13592.05 Hz
 F2P -3.056 ppm
 F2 -230.50 Hz
 PPKM 6.10532 ppm/cm
 HZCM 460.75485 Hz/cm



4.08678
 4.10639
 4.68413
 4.68677
 4.82444
 4.42000
 4.42248
 4.42496
 4.12152

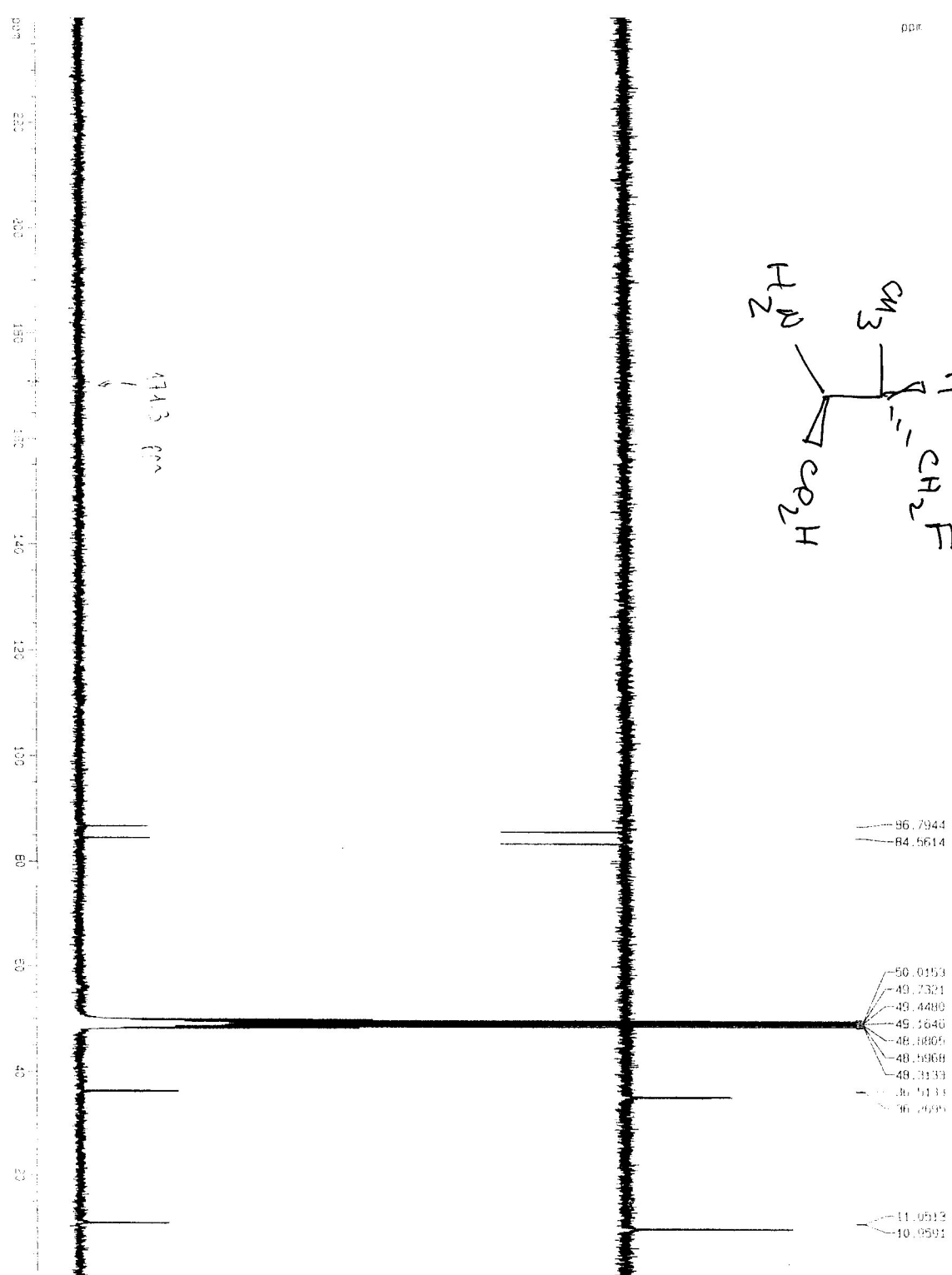
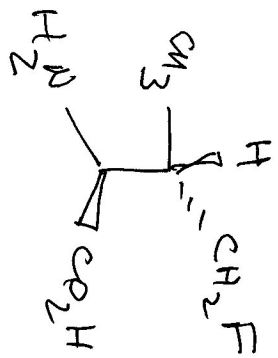
Current Data Parameters
 NAME Jvalife
 EXPNO 10
 PROCNO 1

F2 - Acquisition Parameters
 Date_ 981015
 Time 15.05
 INSTRUM dpx300
 PROBHD 5 mm Dual 13
 PULPROG zg30
 TD 32768
 SOLVENT MeOH
 NS 16
 DS 2
 SMH 6172.839 Hz
 FIDRES 0.189380 Hz
 AQ 2.6542580 sec
 RG 256
 DW 81.000 usec
 DE 5.50 usec
 TE 300.0 K
 O1 1.00000000 sec
 P1 10.50 usec
 DE 5.50 usec
 SFO1 300.1318534 MHz
 NUC1 1H
 PL1 -6.00 dB

F2 - Processing Parameters
 SI 16384
 SF 300.1299885 MHz
 WDW EM
 SSB 0
 LB 0.30 Hz
 GB 0
 PC 1.00

1D NMR plot parameters
 CX 30.00 cm
 F1P 11.000 DPM
 F1 3301.43 Hz
 F2P -1.000 DPM
 F2 -300.13 Hz
 PPMCK 0.40000 DPM/cm
 HZCM 120.05199 Hz/cm

vai1f-JD



2.233

2.438

2.132

Current Data Parameters
 NAME vai1f
 EXPNO 11
 PROCNO 1

F2 - Acquisition Parameters
 Date_ 981013
 Time 5.40

INSTRUM dpx300
 PROBHID 5 mm Dual 13
 PULPROG zgpg30
 TD 65536
 SOLVENT MeOH
 NS 2048
 DS 2

SMH 23809.523 Hz
 FIDRES 0.363304 Hz
 AQ 1.3763061 sec
 SFO2 4095

DE 21.000 usec
 TE 300.0 K

D12 0.00002000 sec
 PL13 18.00 dB

D1 3.00000000 sec
 CPDPRG2 waitz16

PCPD2 100.00 usec
 SFO2 300.1312005 MHz

NUC2 1H
 PL2 -6.00 dB

PL12 16.00 dB
 P1 6.00 usec

DE 5.50 usec
 SFO1 75.4772501 MHz

NUC1 13C
 PL1 -3.00 dB

D11 0.03000000 sec

F2 - Processing Parameters
 SI 32768

SF 75.4676374 MHz
 MDH EM

SSB 0
 LB 1.00 Hz

GB 0
 PC 1.40

1D NMR plot parameters
 CX 30.00 cm

F1P 240.000 ppm
 F1 18112.23 Hz

F2P 0.000 ppm
 F2 0.00 Hz

PPMCM 9.00000 ppm/cm
 HZCM 603.74103 Hz/cm