

---

## Role of the *peri*-effect in synthesis and reactivity of highly substituted naphthaldehydes: a novel backbone amide linker for solid-phase synthesis

---

Michael Pittelkow,<sup>a</sup> Ulrik Boas,<sup>a,b</sup> Mikkel Jessing,<sup>a</sup> Knud J. Jensen,<sup>b</sup> and Jørn B. Christensen<sup>\*,a</sup>

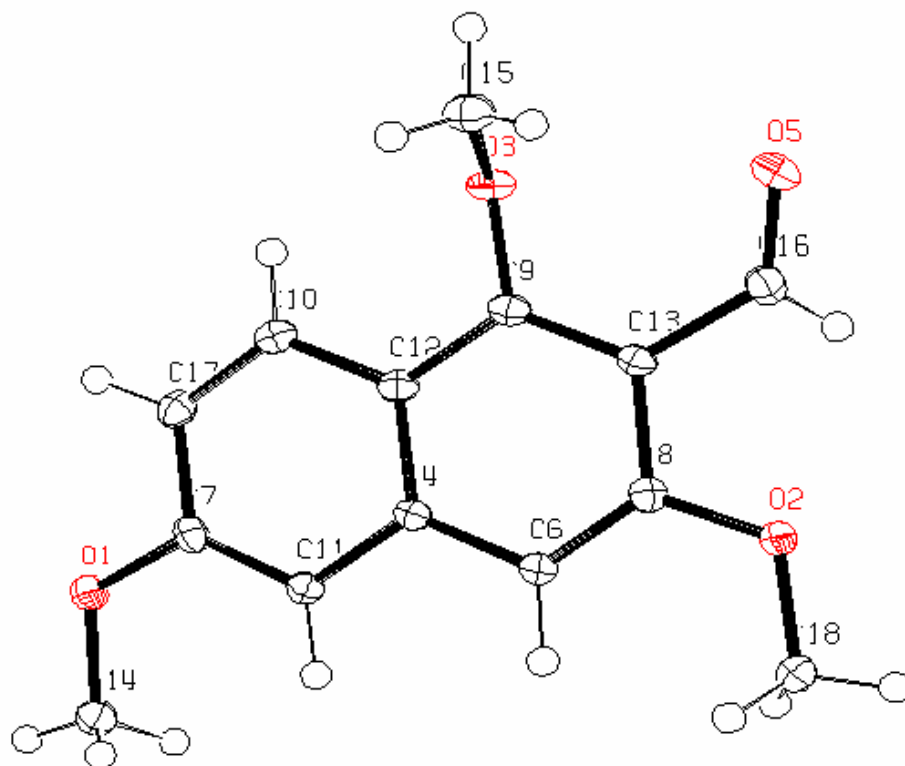
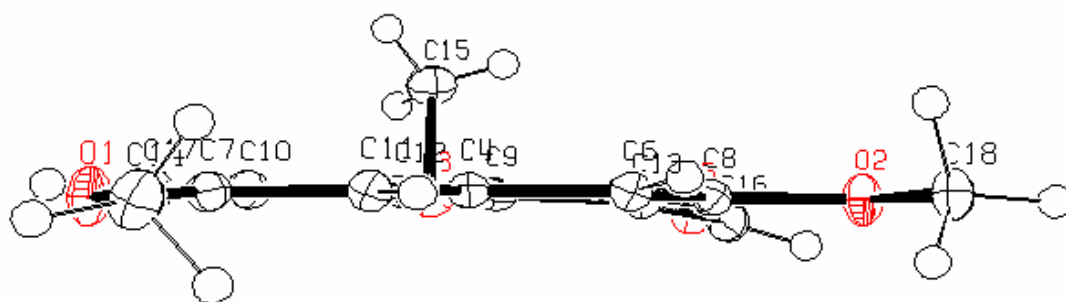
<sup>a</sup> Department of Chemistry, University of Copenhagen, Universitetsparken 5, DK-2100, Denmark.; E-mail: [jbc@kiku.dk](mailto:jbc@kiku.dk); Fax: +45 353220212; Tel: +45 35320194

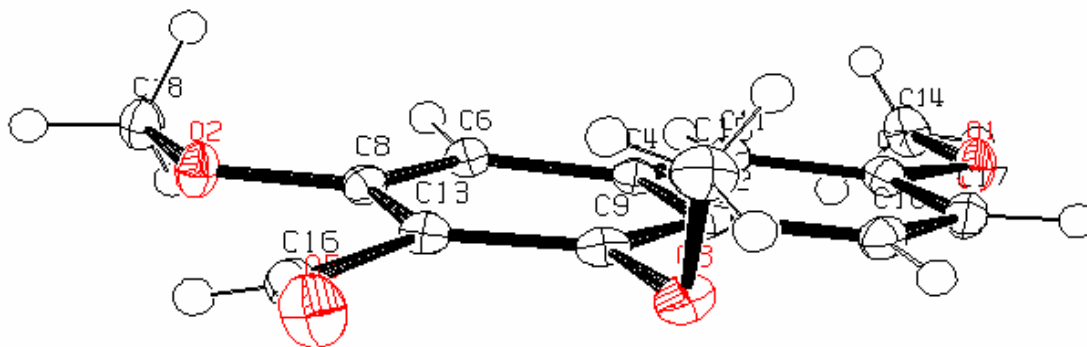
<sup>b</sup> Department of Chemistry, Royal Veterinary and Agricultural University, Thorvaldsensvej 40, DK-1870 Frederiksberg C, Denmark

## Supporting Information

X-ray structure of <b>7</b> .....	S2-S3
X-ray structure of <b>8</b> .....	S4-S6
HPLC of cleaved model dipeptide.....	S7
HMBC spectrum of compound <b>7</b> .....	S8
HMBC spectrum of compound <b>8</b> .....	S9
HMBC spectrum of compound <b>10</b> .....	S10
HMBC spectrum of compound <b>11</b> .....	S11

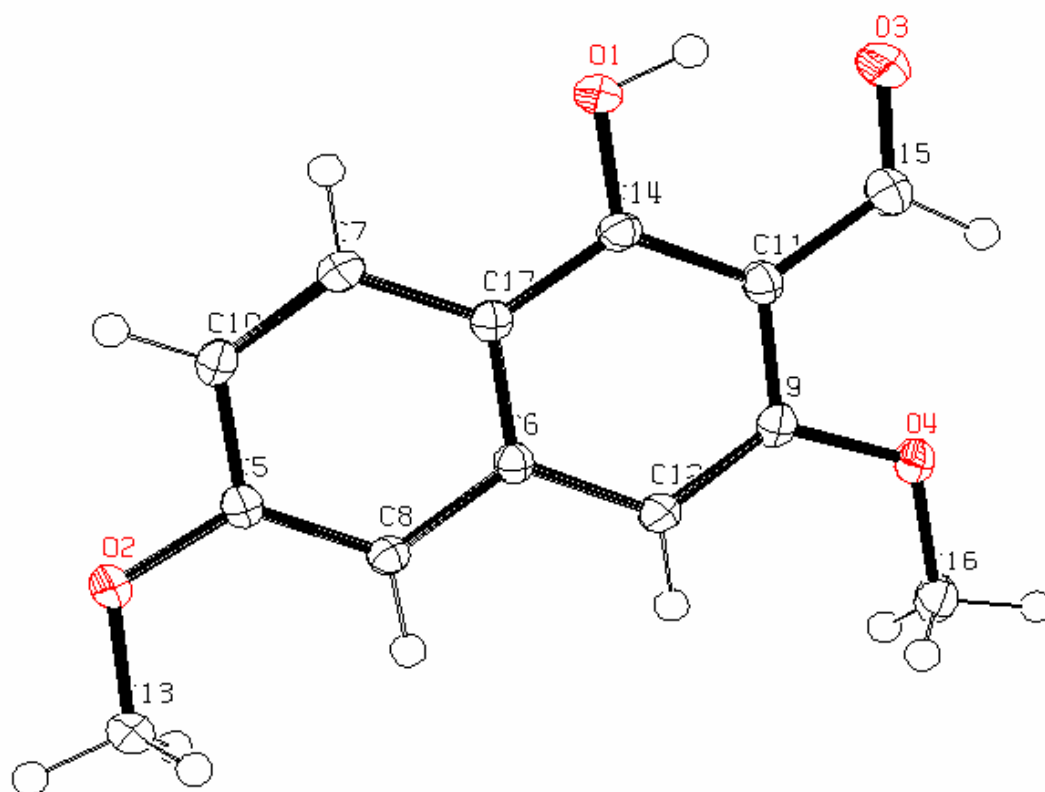
**X-ray diffraction for compound 7**

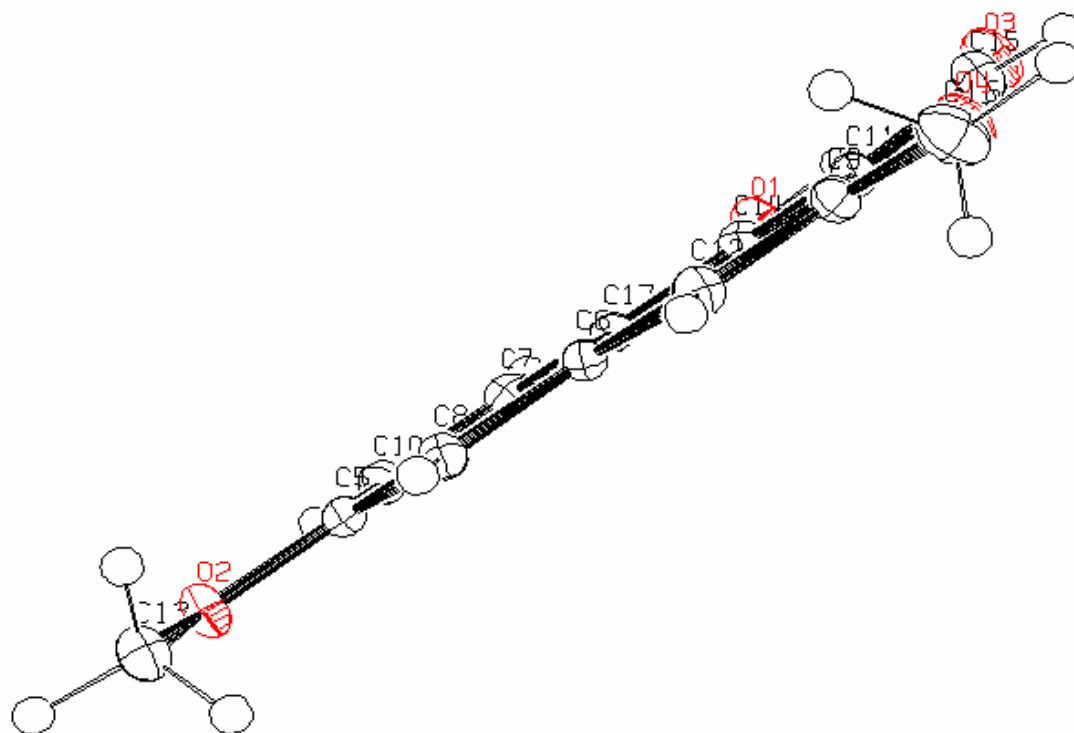
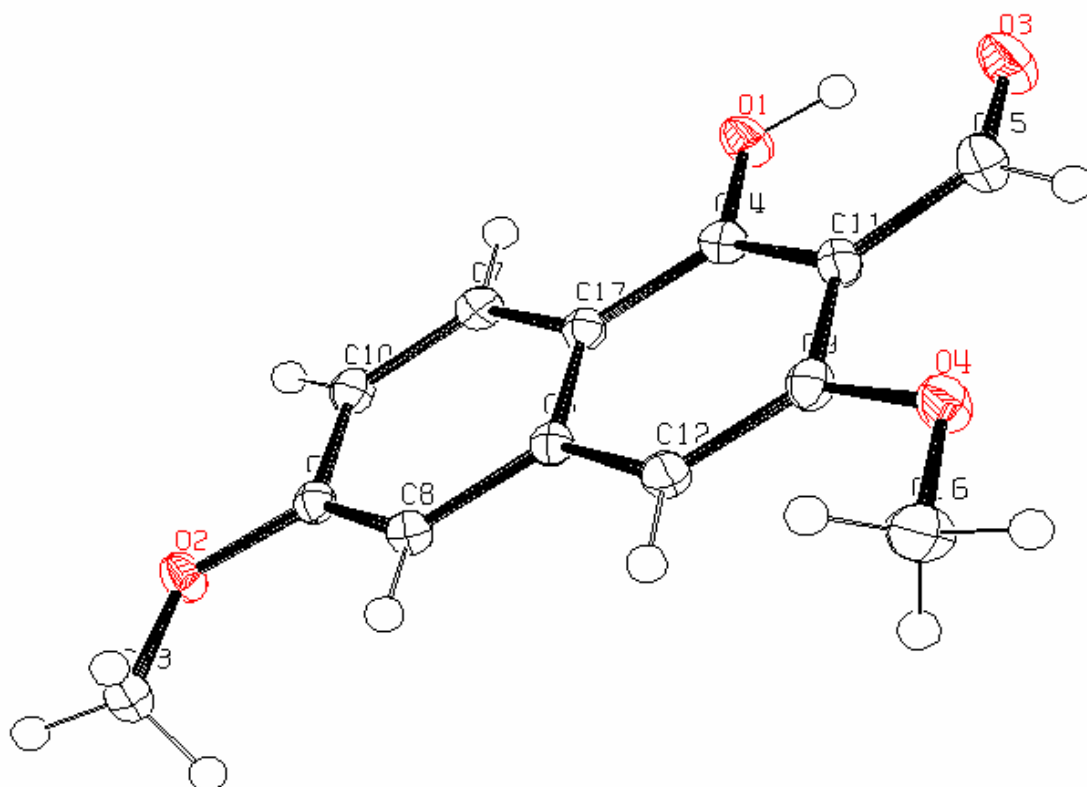


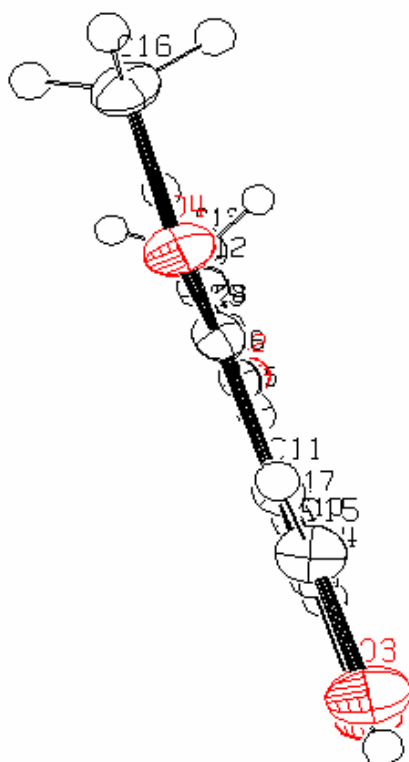


Additional illustrations of the crystal structure of compound **8**.

**X-ray diffraction for compound 8**

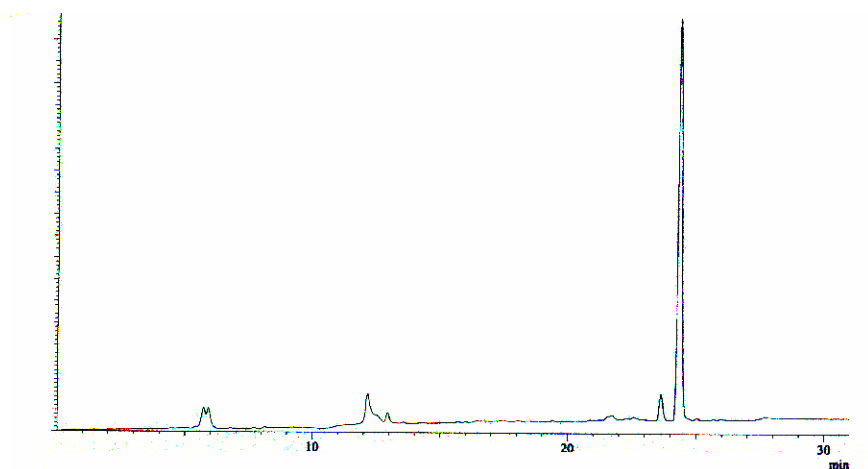






Additional illustrations of the crystal structure of compound **8**.

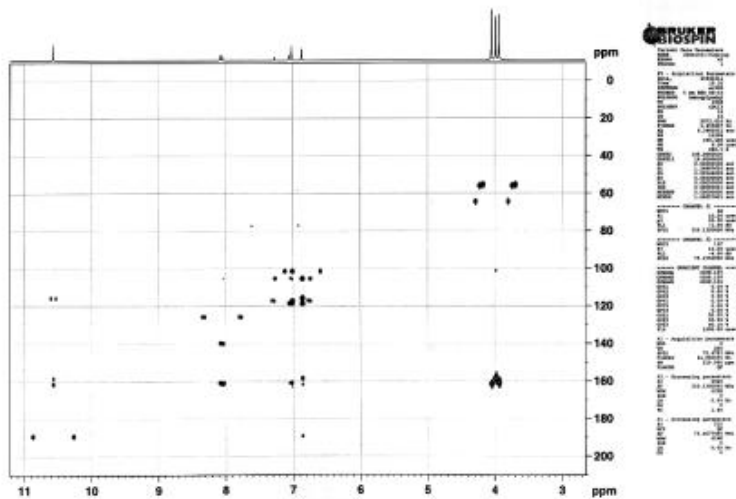
**HPLC trace of dipeptide after cleavage with TFA-CH<sub>2</sub>Cl<sub>2</sub> 19 : 1.**



HPLC chromatogram (220nm) of crude Fmoc-Phe-Leu-OH released from the naphthalene based NAL-3 linker.

HBMC spectrum of compound 7

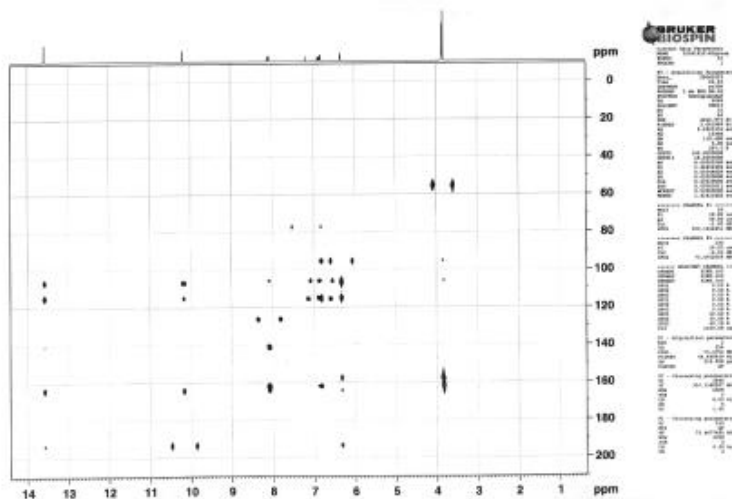
Compound 7 HMBC





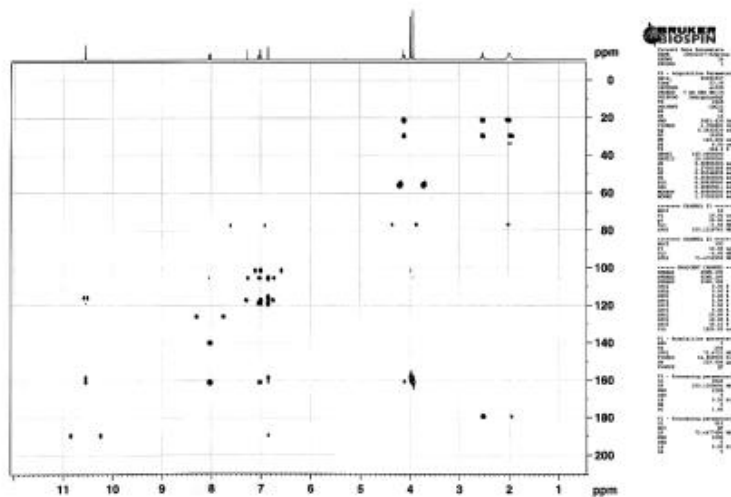
HBMC spectrum of compound **8**

Compound **8** HMBC



HBMC spectrum of compound **10**

Compound 10 HMBC



HBMC spectrum of compound **11**

Compound 11 HMBC

