

# **Expeditious synthesis of bioactive allylphenol constituents of the genus *Piper* through a metal-free photoallylation procedure.**

Stefano Protti, Maurizio Fagnoni\*, and Angelo Albini.

*Dipartimento di Chimica Organica, Università, V. Taramelli 10, 27100 Pavia, Italy*

fagnoni@unipv.it

## **SUPPLEMENTARY DATA**

**11 PAGES**

## **TABLE OF CONTENTS**

<b>1)</b>	<b>Elemental analysis of compounds 10-18</b>	<b>S2</b>
<b>2)</b>	<b><sup>1</sup>H NMR spectra of compounds 10-18</b>	<b>S3-S11</b>

**1) ELEMENTAL ANALYSIS OF COMPOUNDS 10-18.**

**10:** Anal. Calcd for  $C_{10}H_{12}O$ : C 81.04, H 8.16; Found: C 80.7, H 8.3.

**11:** Anal. Calcd for  $C_9H_{10}O$ : C 80.56, H 7.51; Found: C 80.7, H 7.6.

**12:** Anal. Calcd for  $C_9H_{10}O_2$ : C 71.98, H 6.71; Found: C 71.8, H 6.8.

**13:** Anal. Calcd for  $C_{11}H_{14}O_2$ : C 74.13, H 7.92; Found: C 74.0, H 8.0.

**14:** Anal. Calcd for  $C_{10}H_{12}O_2$ : C 73.15, H 7.37; Found: C 72.8, H 7.7.

**15:** Anal. Calcd for  $C_{10}H_{12}O_2$ : C 73.15, H 7.37; Found: C 73.3, H 7.2.

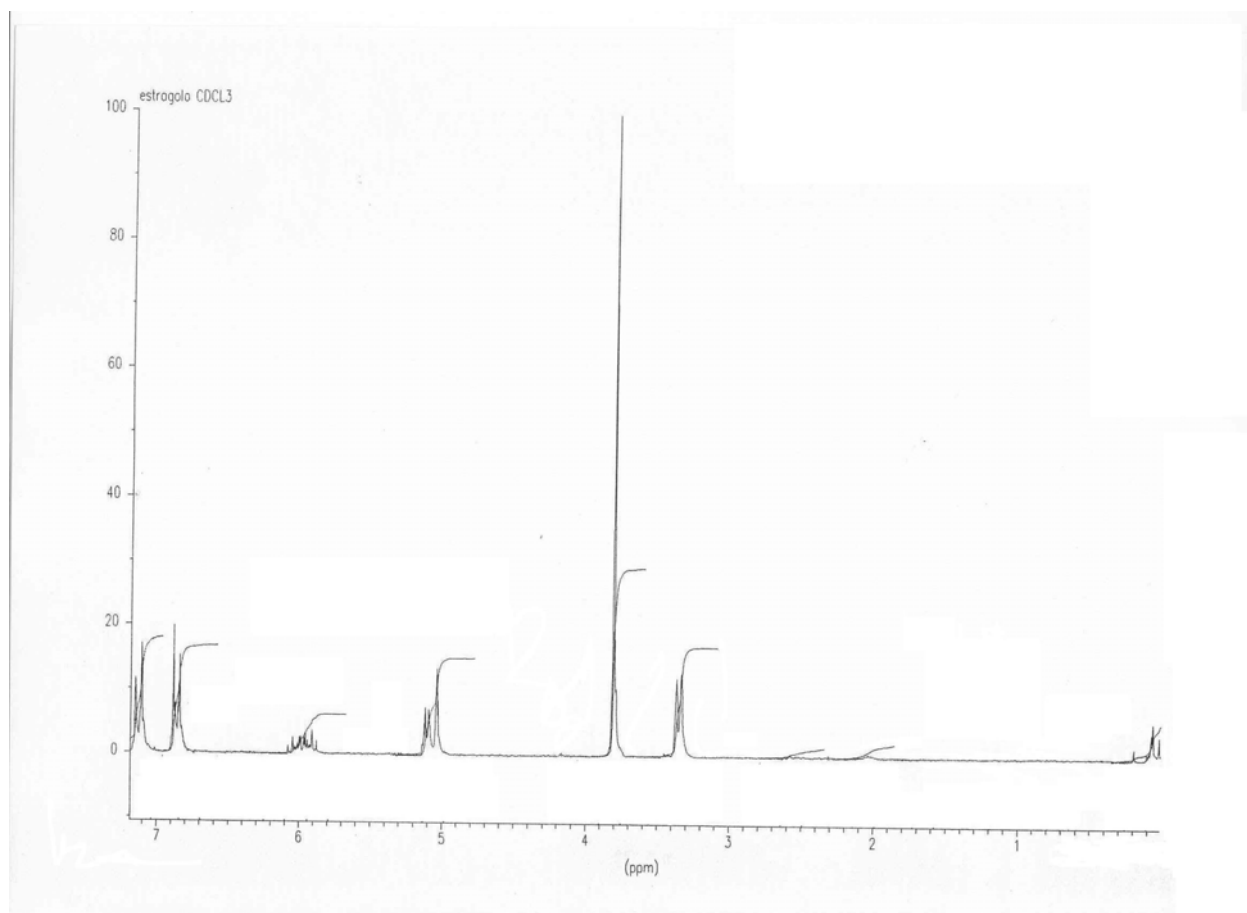
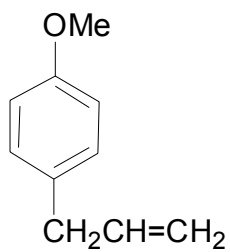
**16:** Anal. Calcd for  $C_{10}H_{10}O_2$ : C 74.06, H 6.21; Found: C 74.0, H 6.4.

**17:** Anal. Calcd for  $C_{11}H_{12}O_3$ : C 68.74, H 6.29; Found: C 68.5, H 6.4.

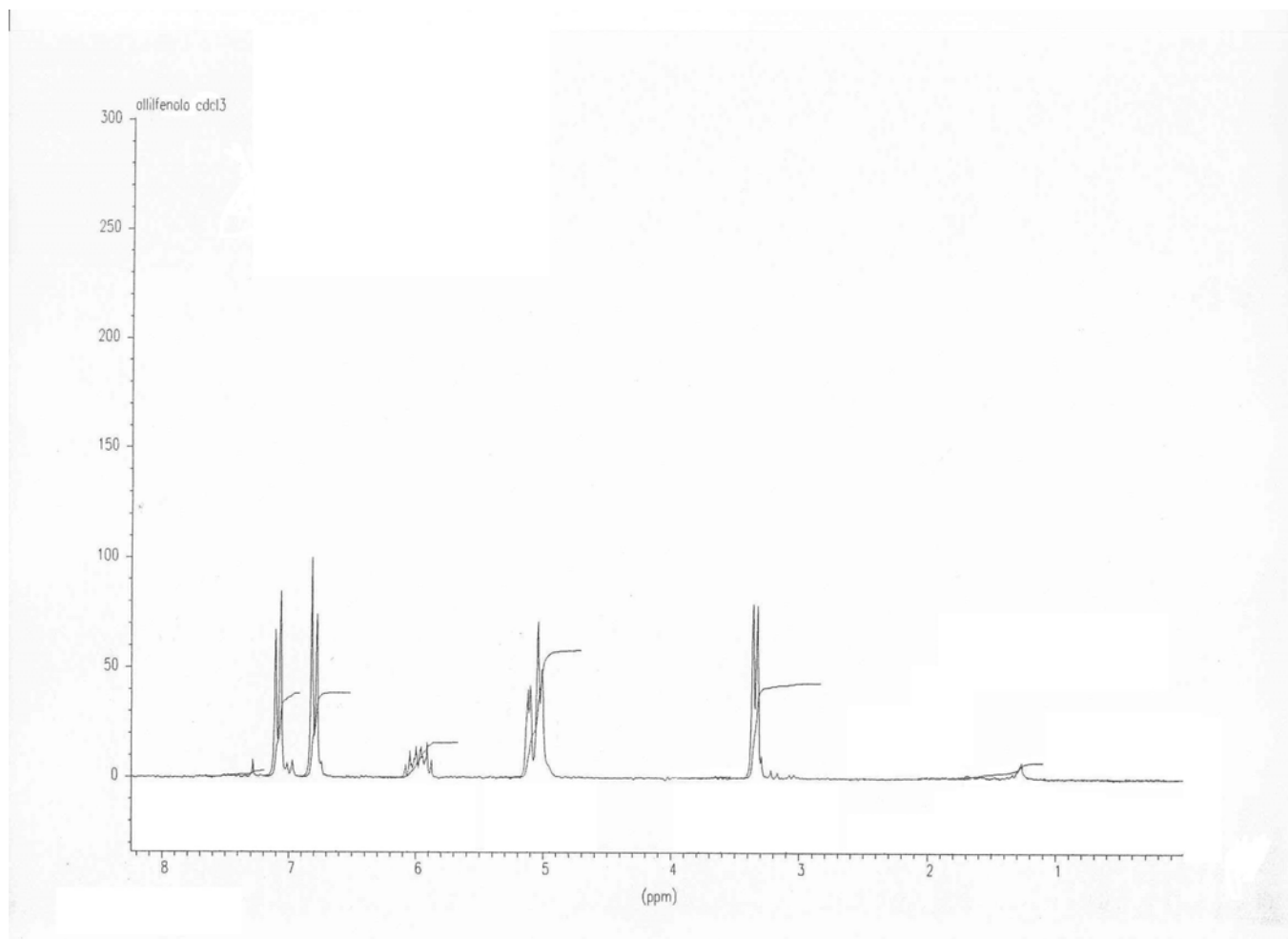
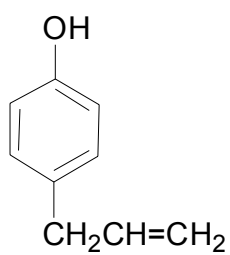
**18:** Anal. Calcd for  $C_{12}H_{16}O_3$ : C 69.21, H 7.74; Found: C 69.1, H 7.8.

2)  $^1\text{H-NMR}$  spectra of compounds 10-18

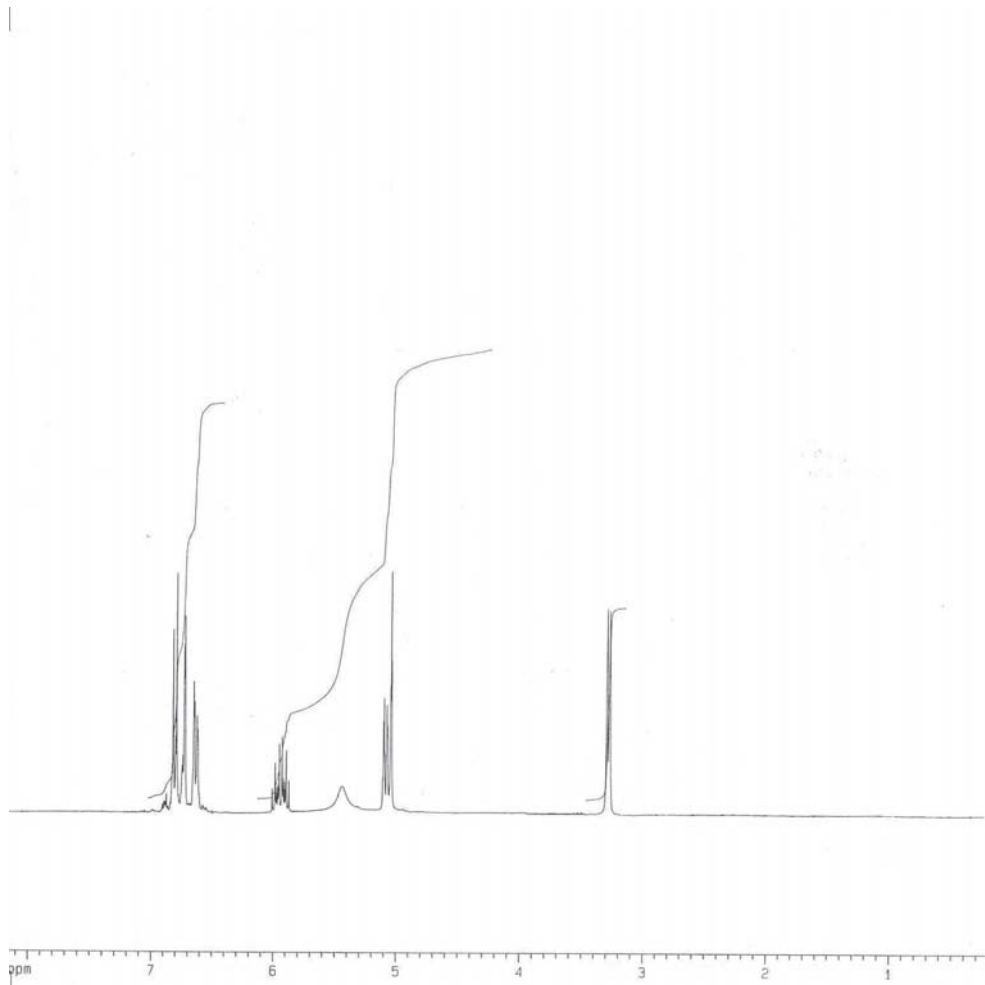
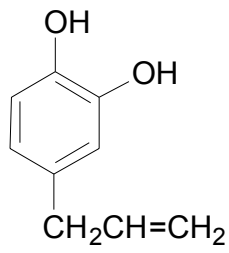
Compound 10



Compound 11



Compound 12



Current Data Parameters  
NAME albi  
EXPNO 16  
PROCNO 1

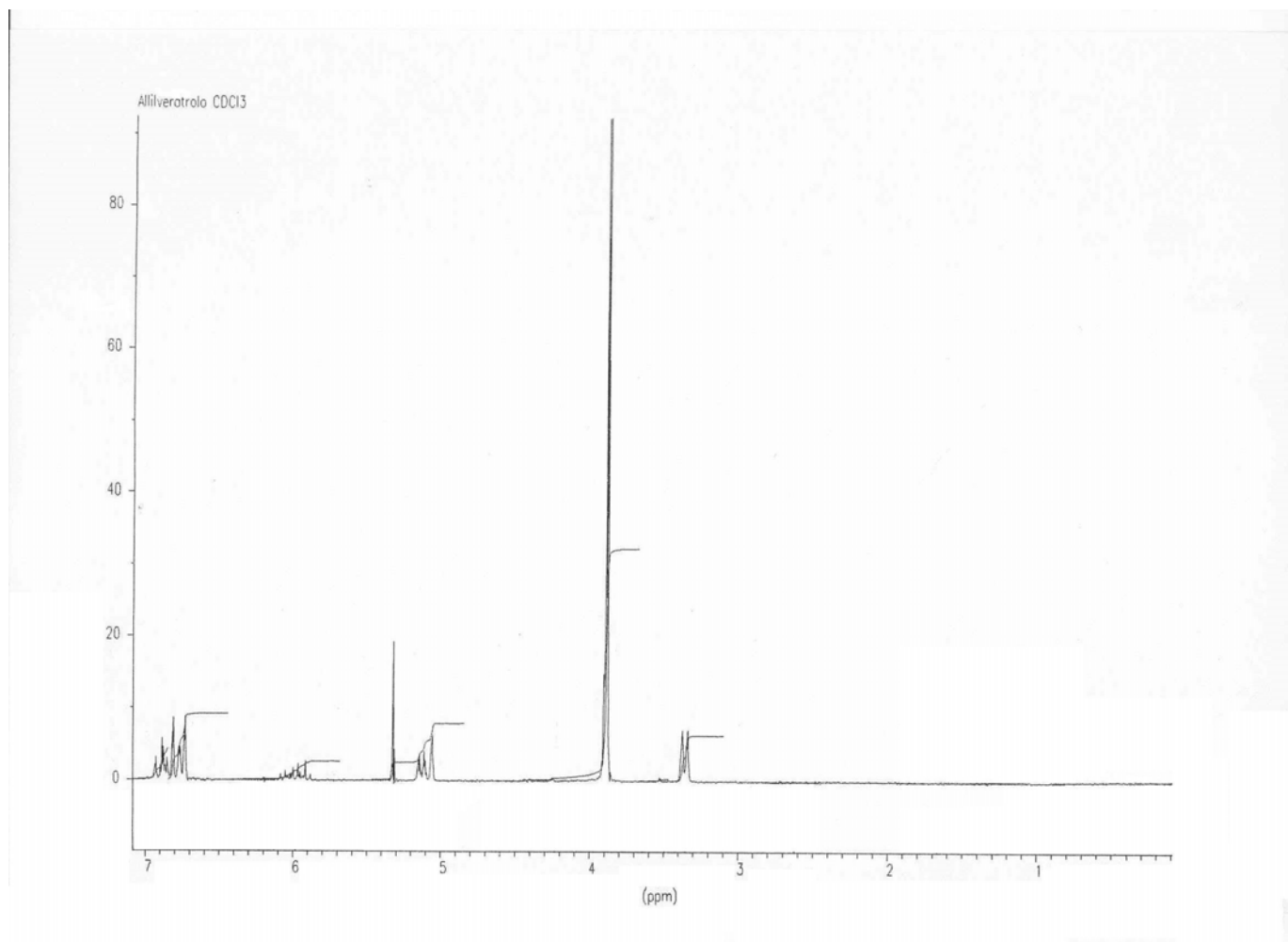
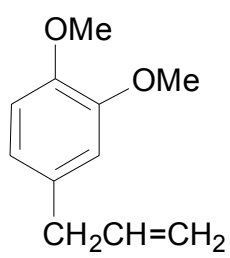
F2 - Acquisition Parameters  
Date\_ 20021009  
Time 15.17  
INSTRUM spect  
PROBHD 5mm BBI Z-Grad  
PULPROG zg  
TD 32768  
SOLVENT DMSO  
NS 6  
DS 2  
SWH 4194.631 Hz  
FIDRES 0.128010 Hz  
AQ 3.9059956 sec  
RG 128  
DW 119.200 usec  
DE 6.00 usec  
TE 300.0 K  
D1 3.0000000 sec

\*\*\*\*\* CHANNEL f1 \*\*\*\*\*  
NUC1 1H  
P1 6.50 usec  
PL1 -2.00 dB  
SFO1 300.1319508 MHz

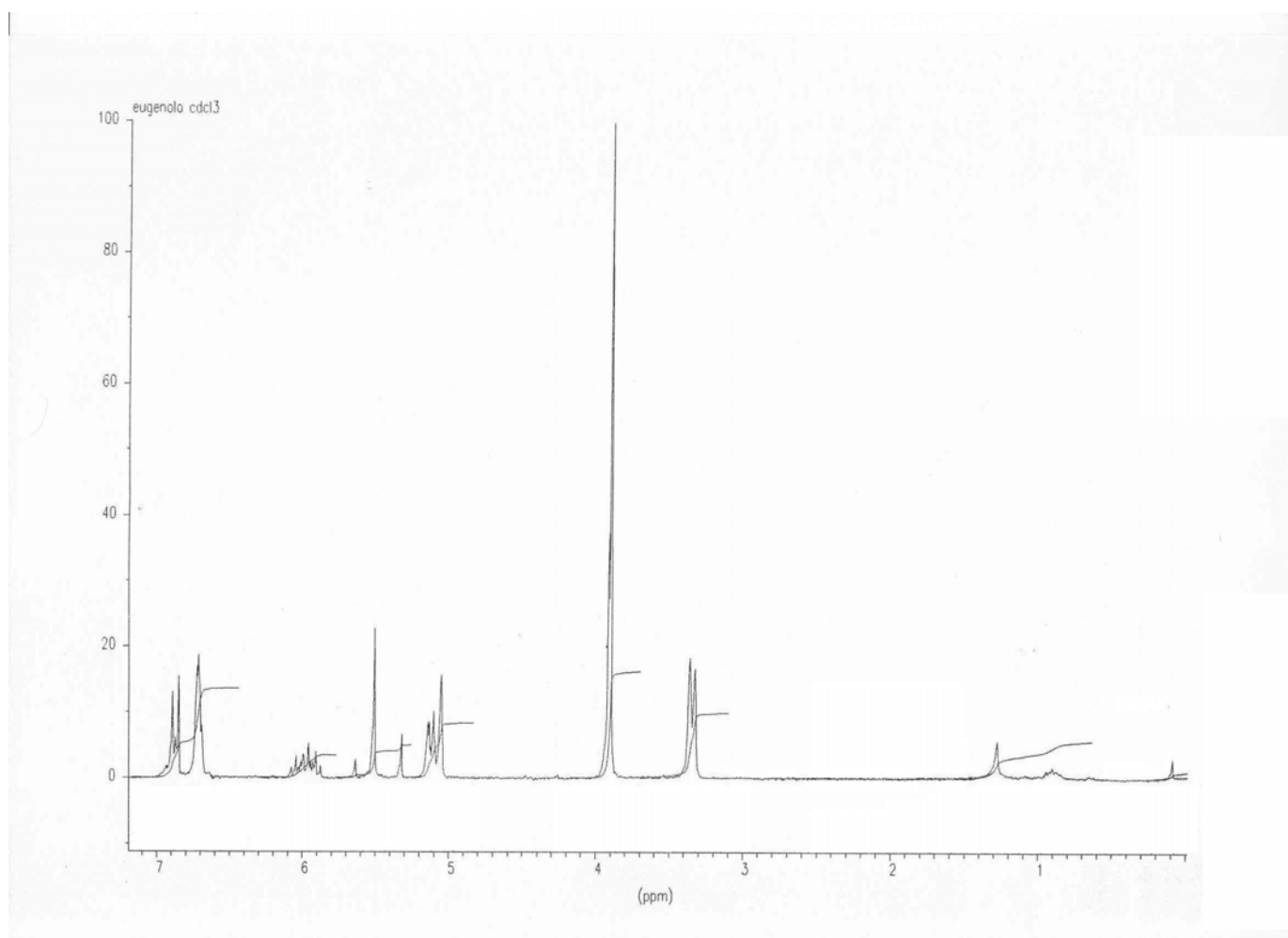
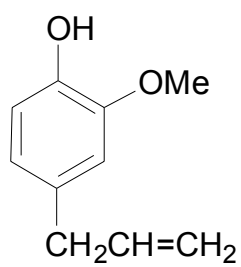
F2 - Processing parameters  
SI 32768  
SF 300.1300000 MHz  
WDW EM  
SSB 0  
LB 0.20 Hz  
GB 0  
PC 1.00

1D NMR plot parameters  
CX 21.00 cm  
F1P 8.162 ppm  
F1 2449.73 Hz  
F2P 0.182 ppm  
F2 54.57 Hz  
PPMCM 0.38002 ppm/cm  
HZCM 114.05546 Hz/cm

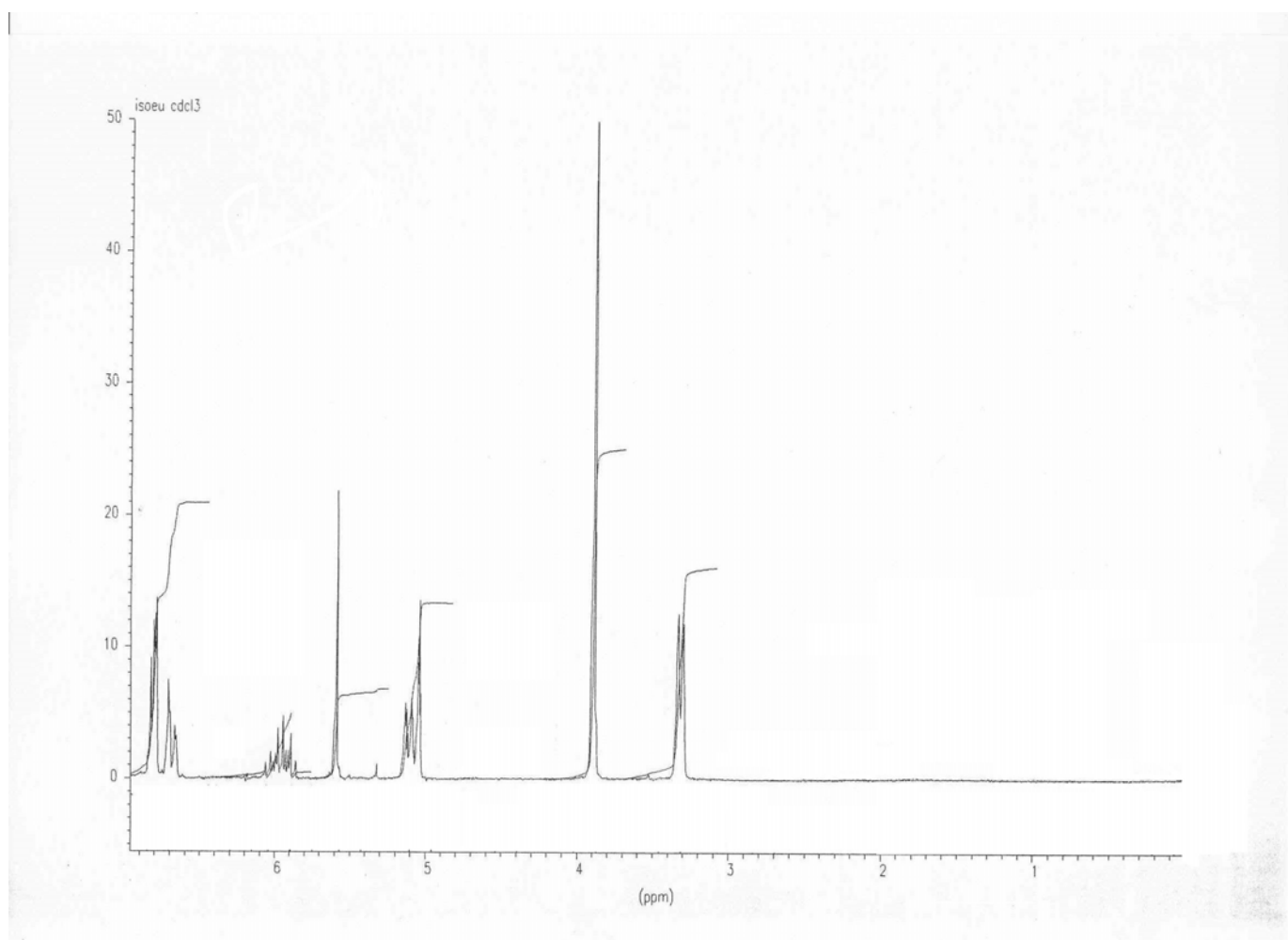
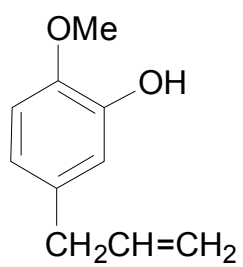
Compound 13



Compound 14

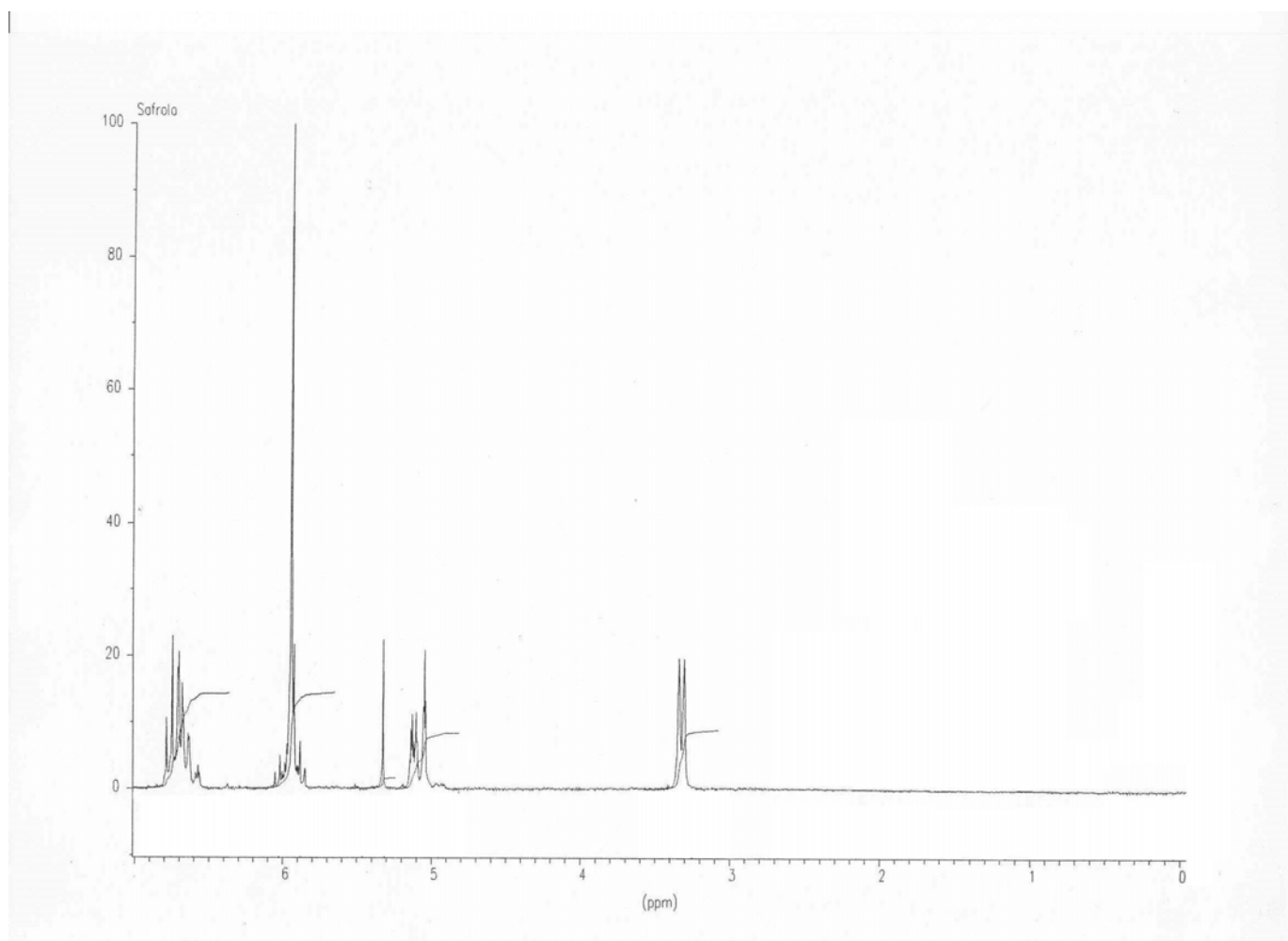
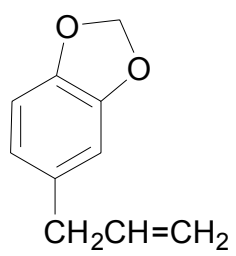


Compound 15

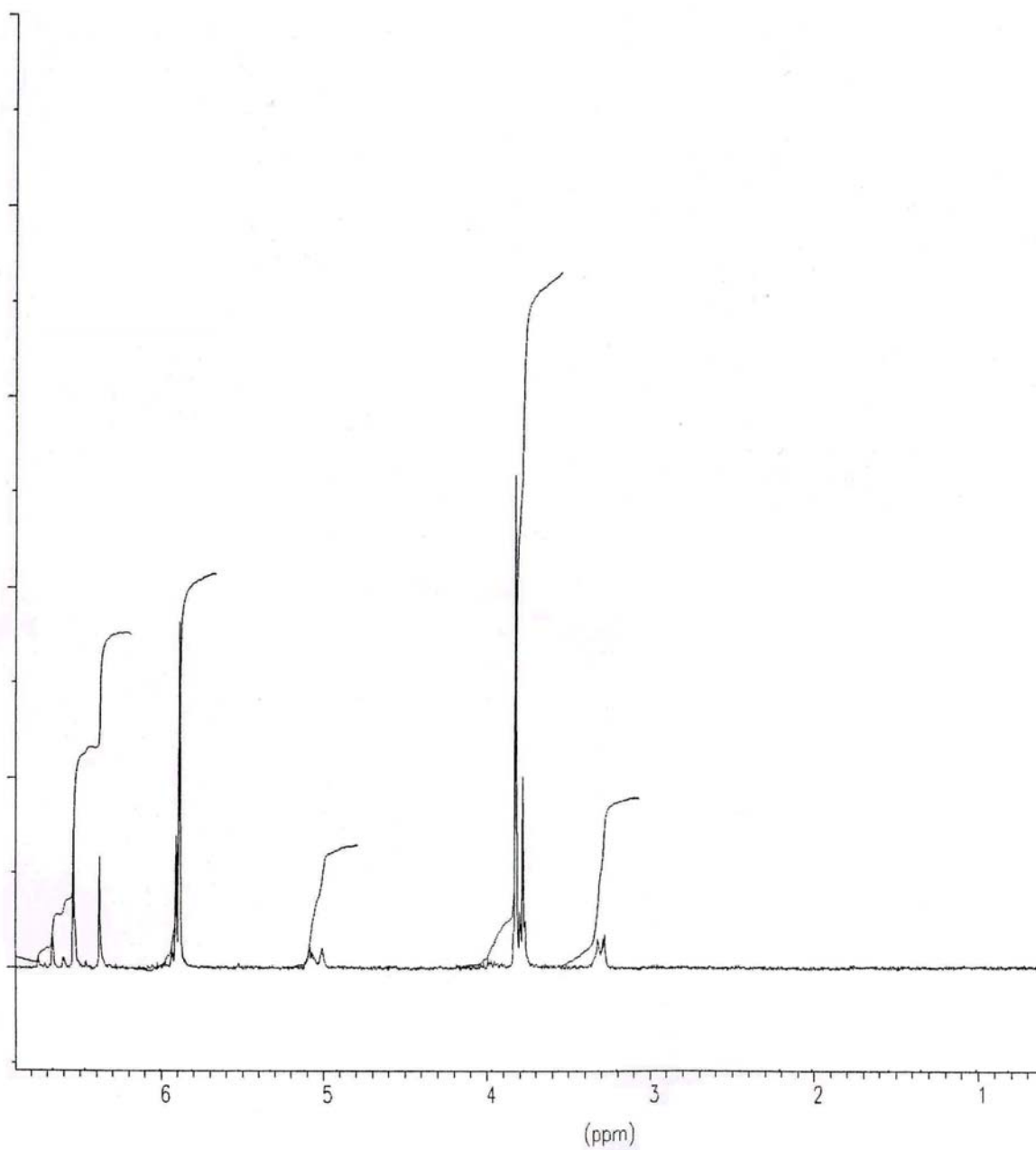
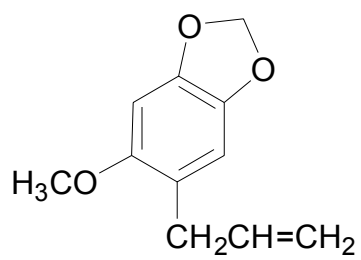




Compound 16



Compound 17



Compound 18

