

Figure SM10. 500 MHz ^1H NMR spectrum of **6** (CDCl_3).

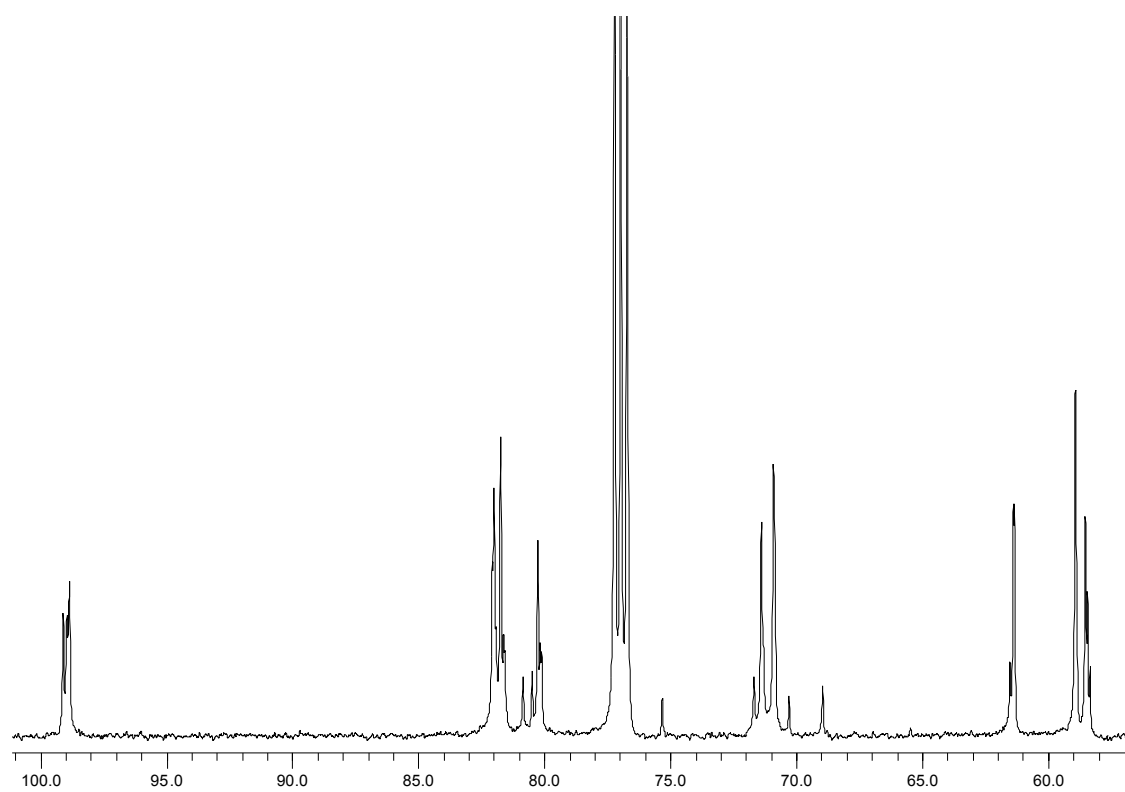


Figure SM11. 125 MHz ¹³C NMR spectrum of **6** (CDCl₃).

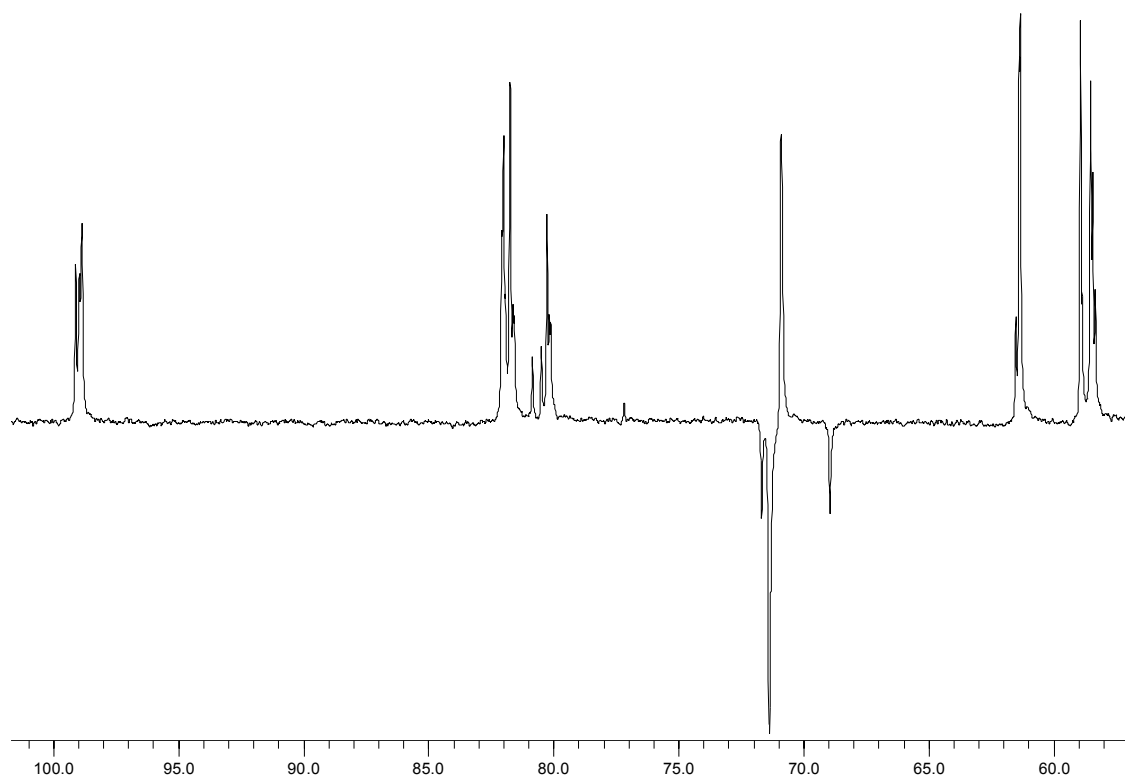


Figure SM12. 125 MHz DEPT spectrum of **6** (CDCl₃).

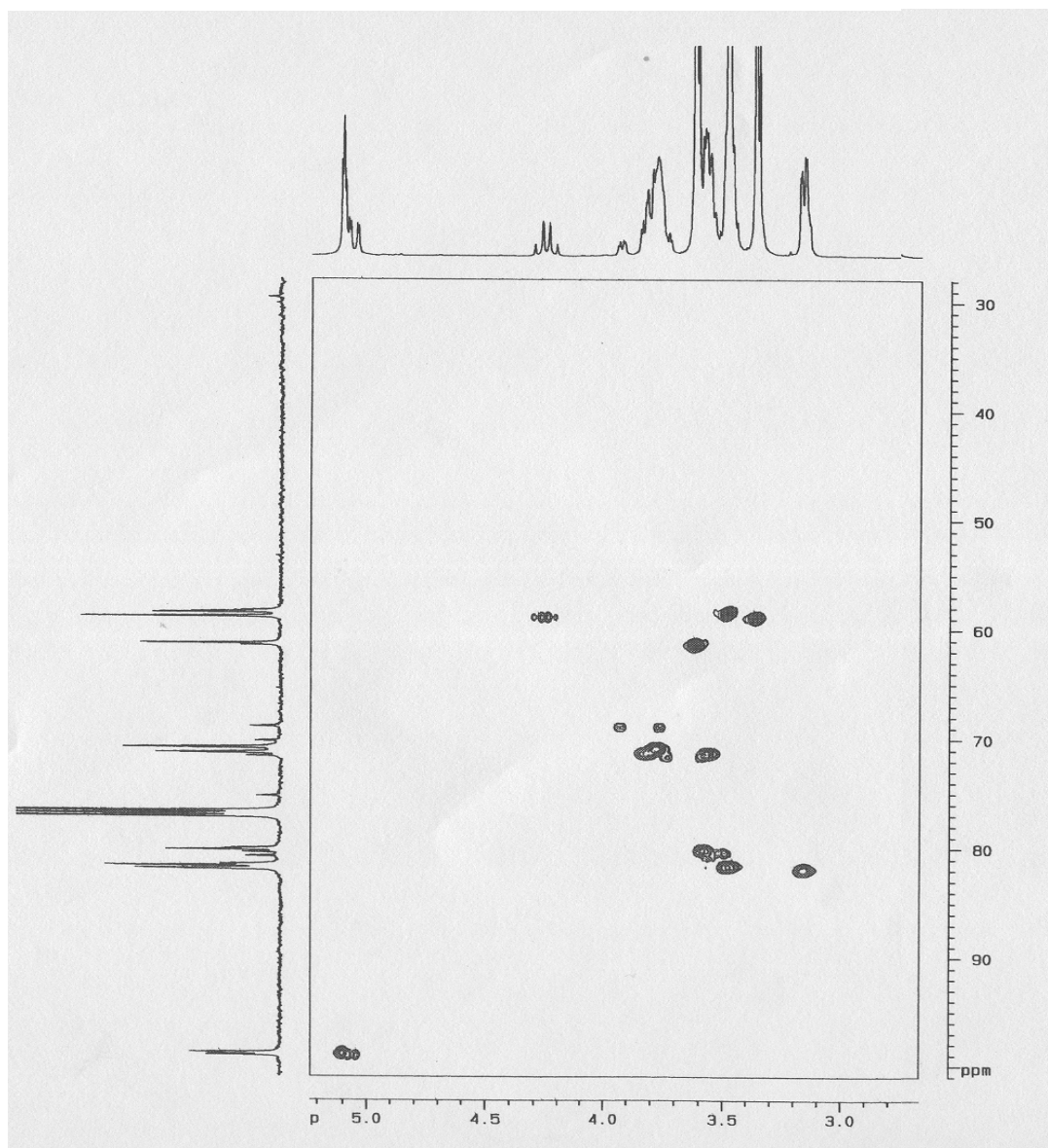


Figure SM13. Expanded HSQC spectrum of **6** (CDCl₃).

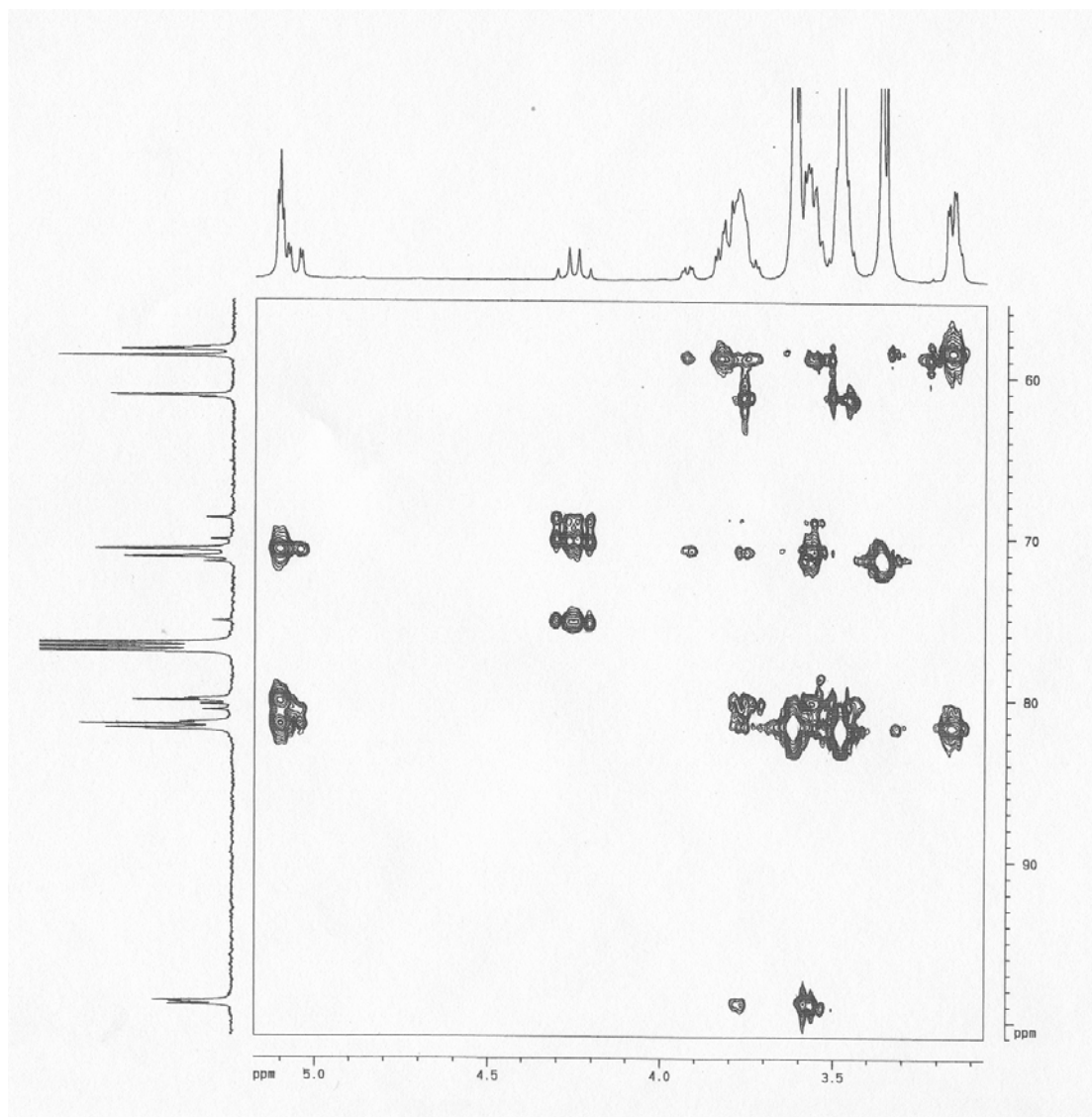


Figure SM14. HMBC spectrum of **6** (CDCl₃).

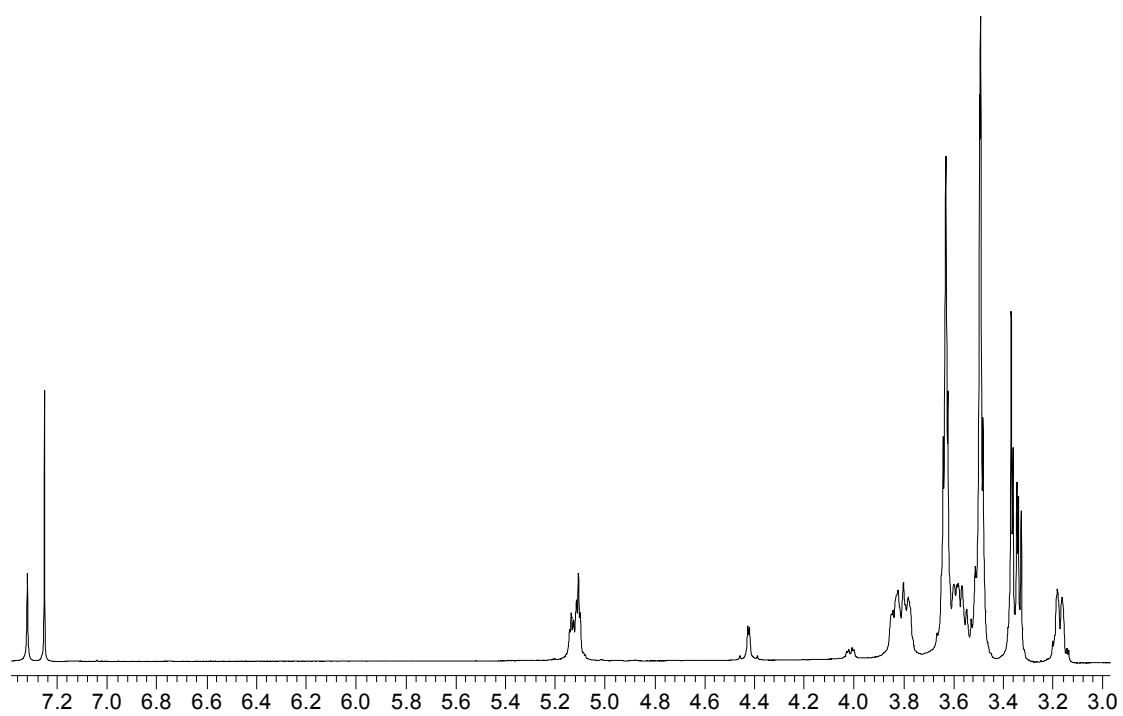


Figure SM15. 500 MHz ^1H NMR of 7 (CDCl_3).

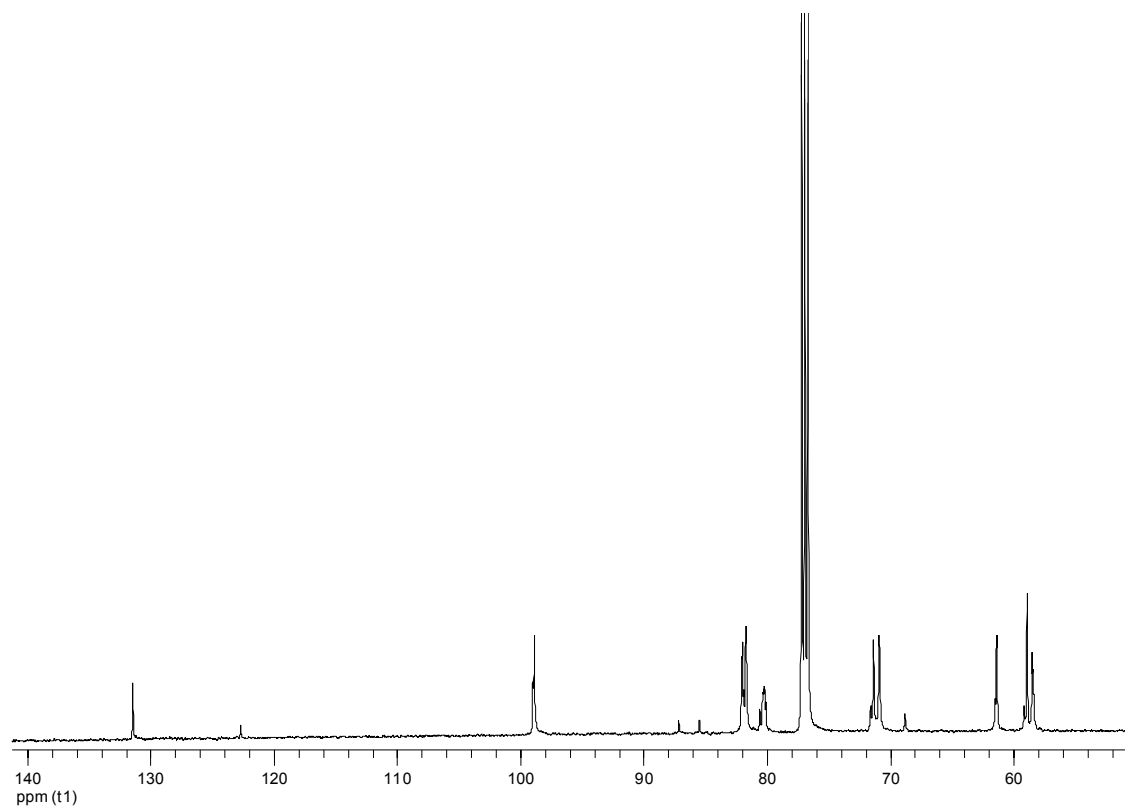


Figure SM16. 125 MHz ^{13}C NMR spectrum of 7 (CDCl_3).

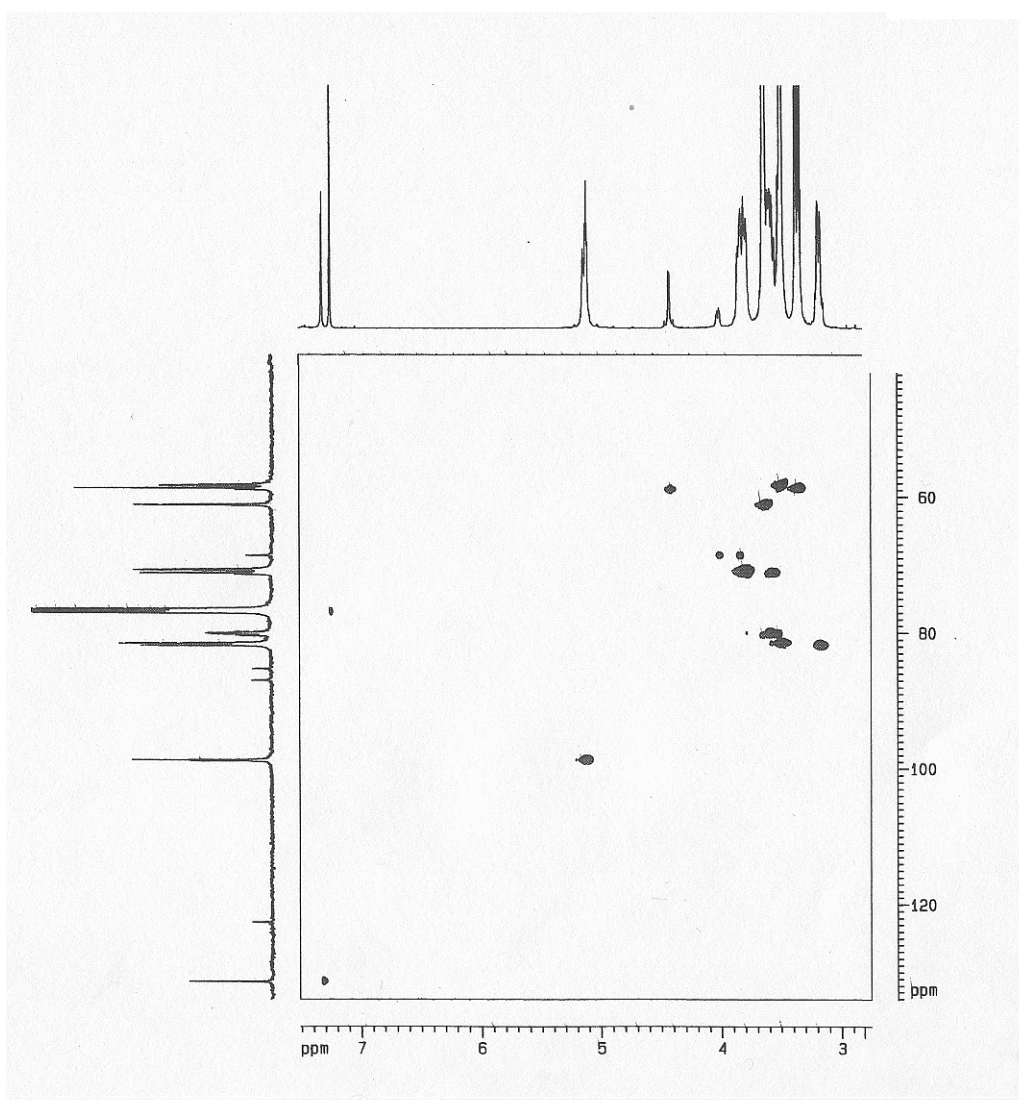


Figure SM17. Expanded HSQC spectrum of **7** (CDCl_3).

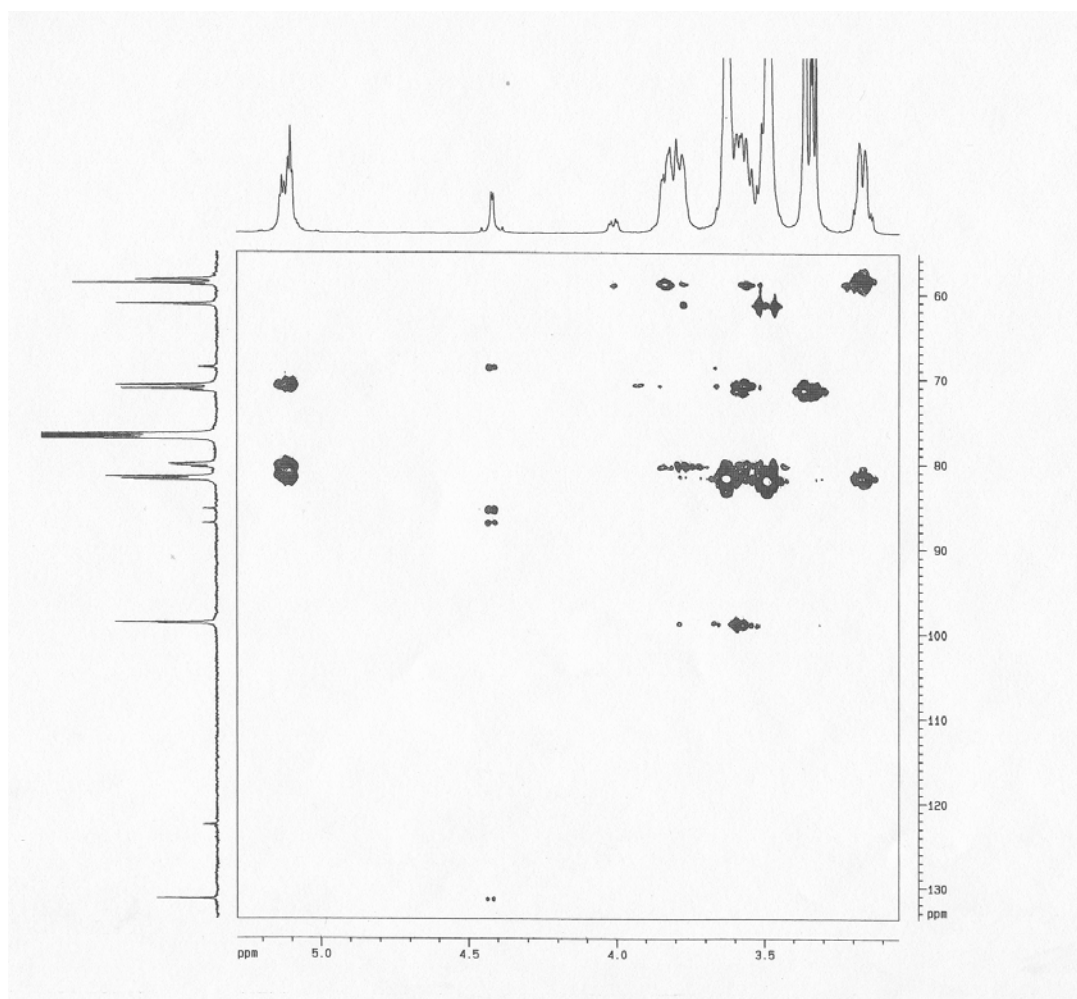


Figure SM18. HMBC spectrum of 7 (CDCl₃).

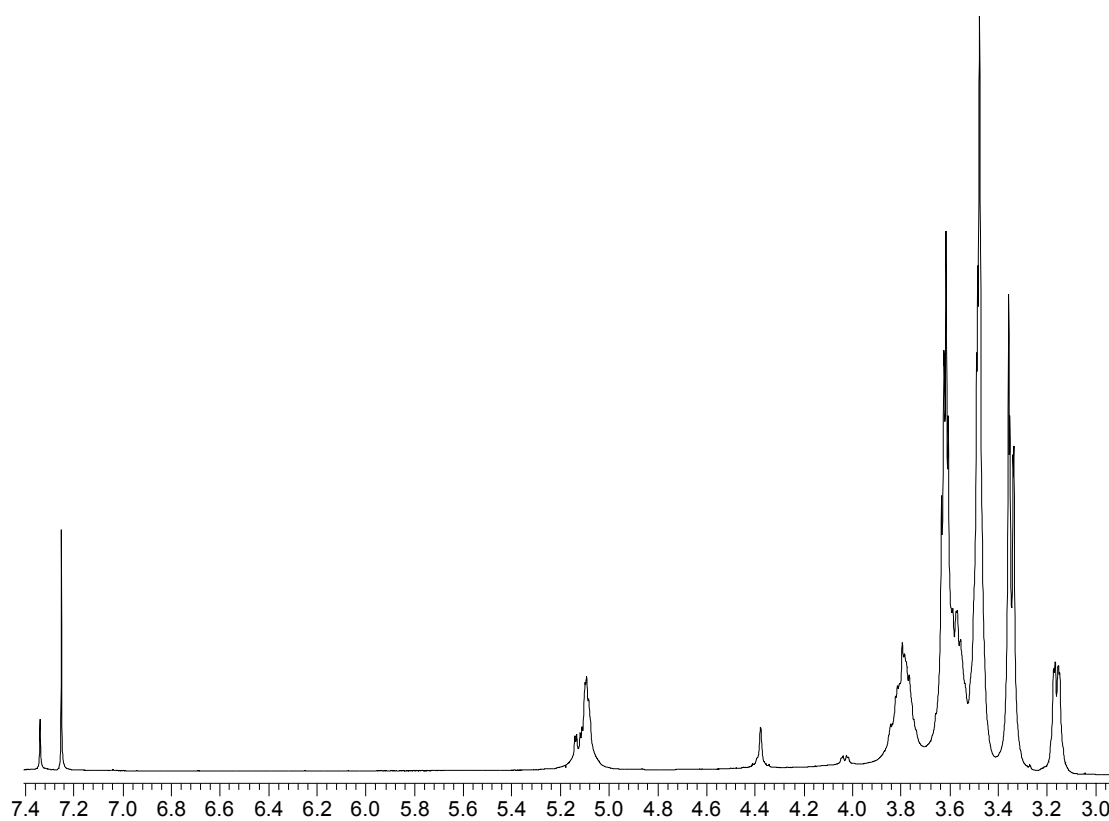


Figure SM19. 500 MHz ^1H NMR spectrum of **8** (CDCl_3).

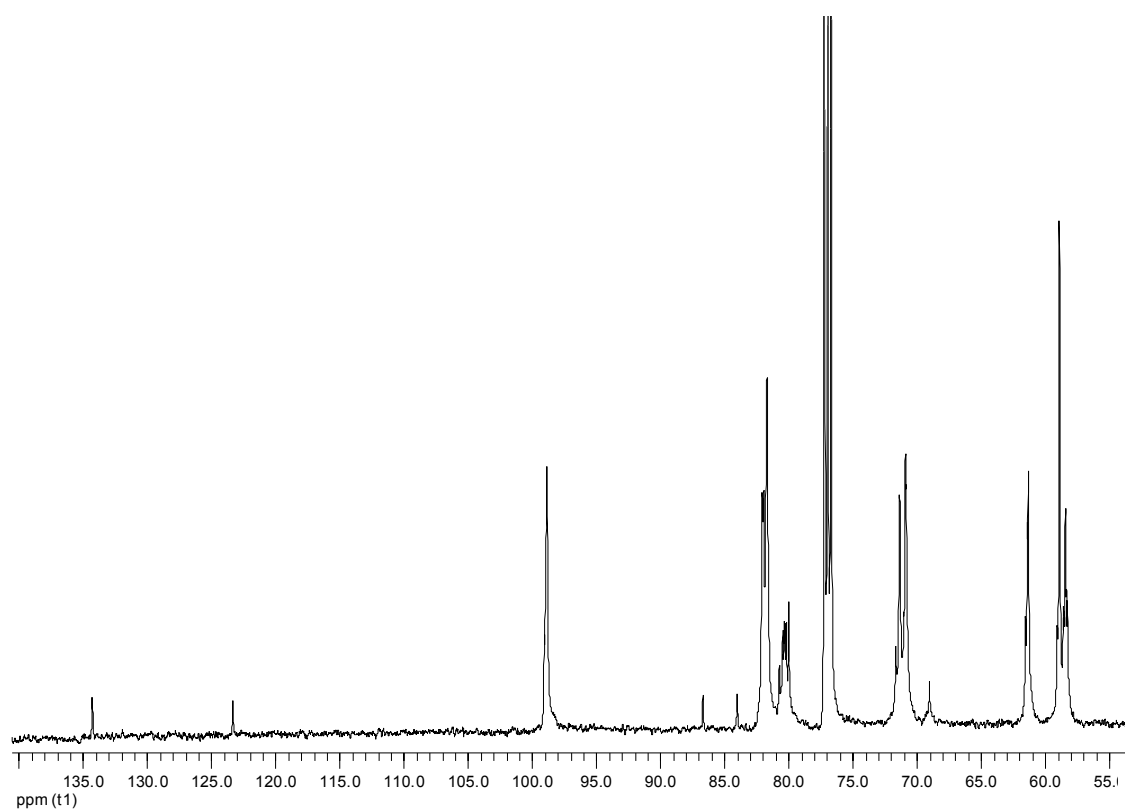


Figure SM20. 125 MHz ^{13}C NMR spectrum of **8** (CDCl_3).



Figure SM21. Expanded HSQC spectrum of **8** (CDCl_3).

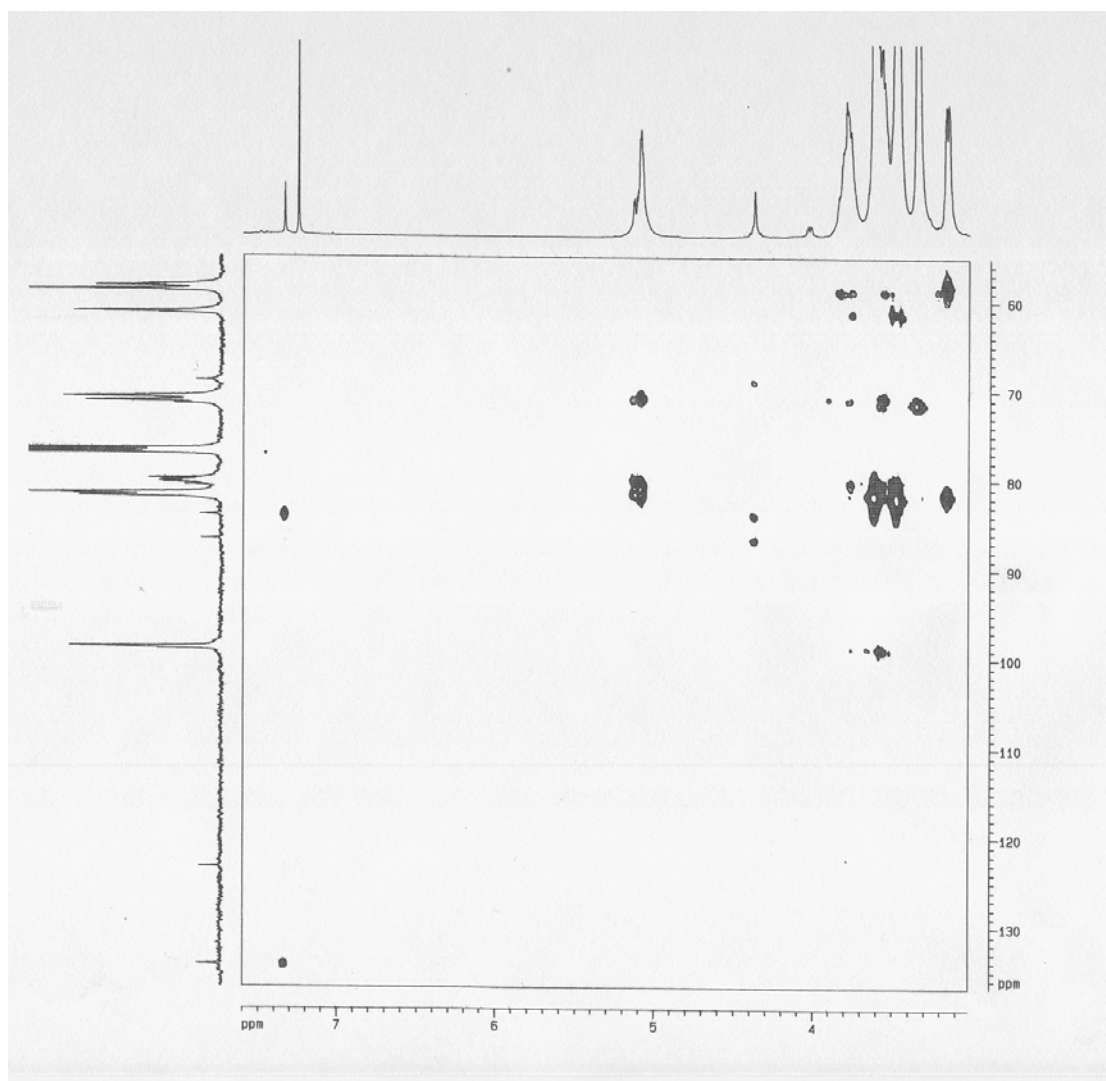


Figure SM22. HMBC spectrum of **8** (CDCl_3).