

Supporting information

C-terminal properties are important for ring-fused 2-pyridones that interfere with chaperone function in uropathogenic *E. coli*

Veronica Åberg^a, Mattias Hedenström^a, Jerome S. Pinkner^b, S. J. Hultgren^b and Fredrik Almqvist^{a}*

^aOrganic Chemistry, Department of Chemistry, Umeå University, SE-90187 Umeå, Sweden

^bMolecular Microbiology, Washington University in St. Louis School of Medicine, St. Louis, MO 63110, USA

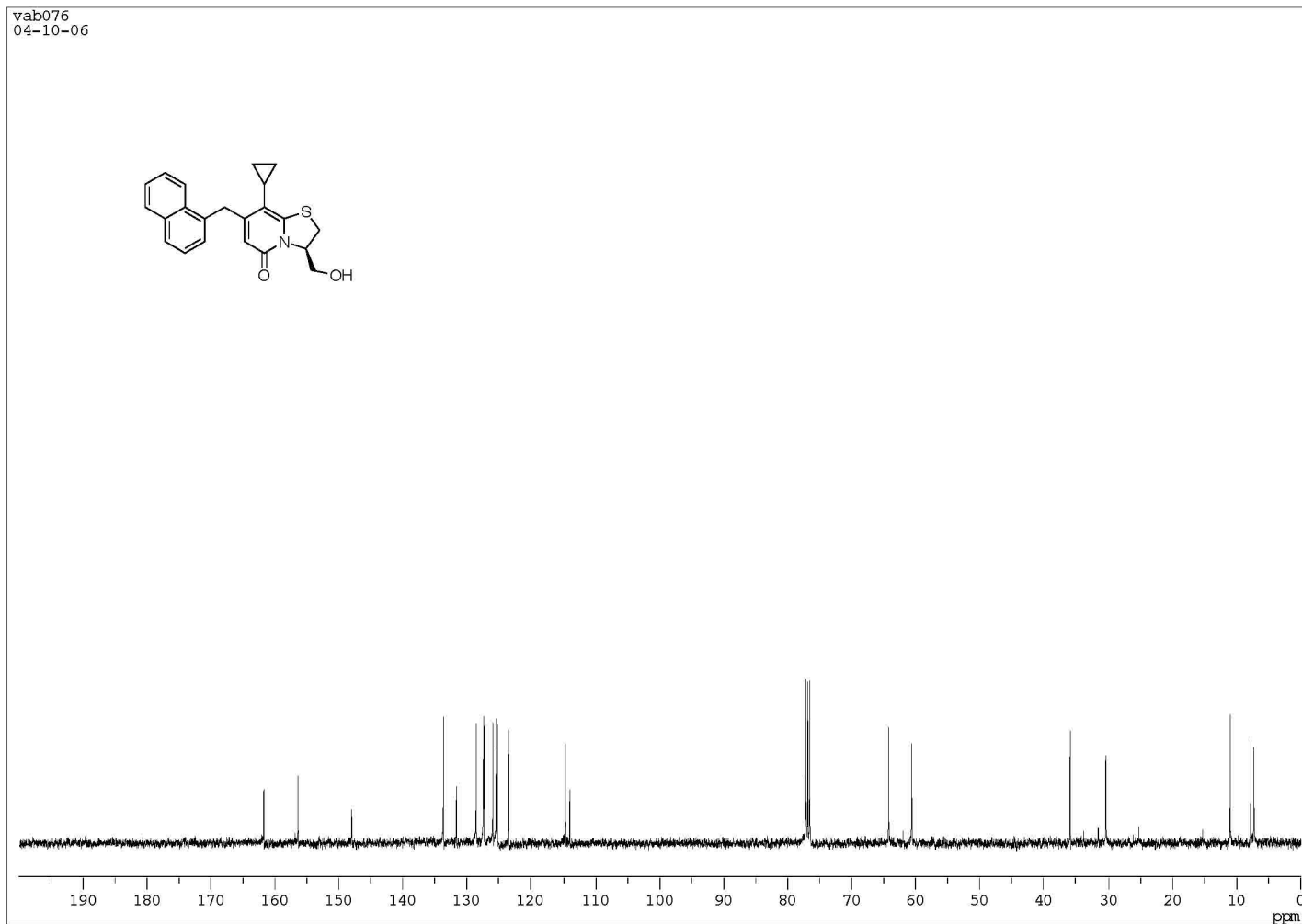
fredrik.almqvist@chem.umu.se

Contents

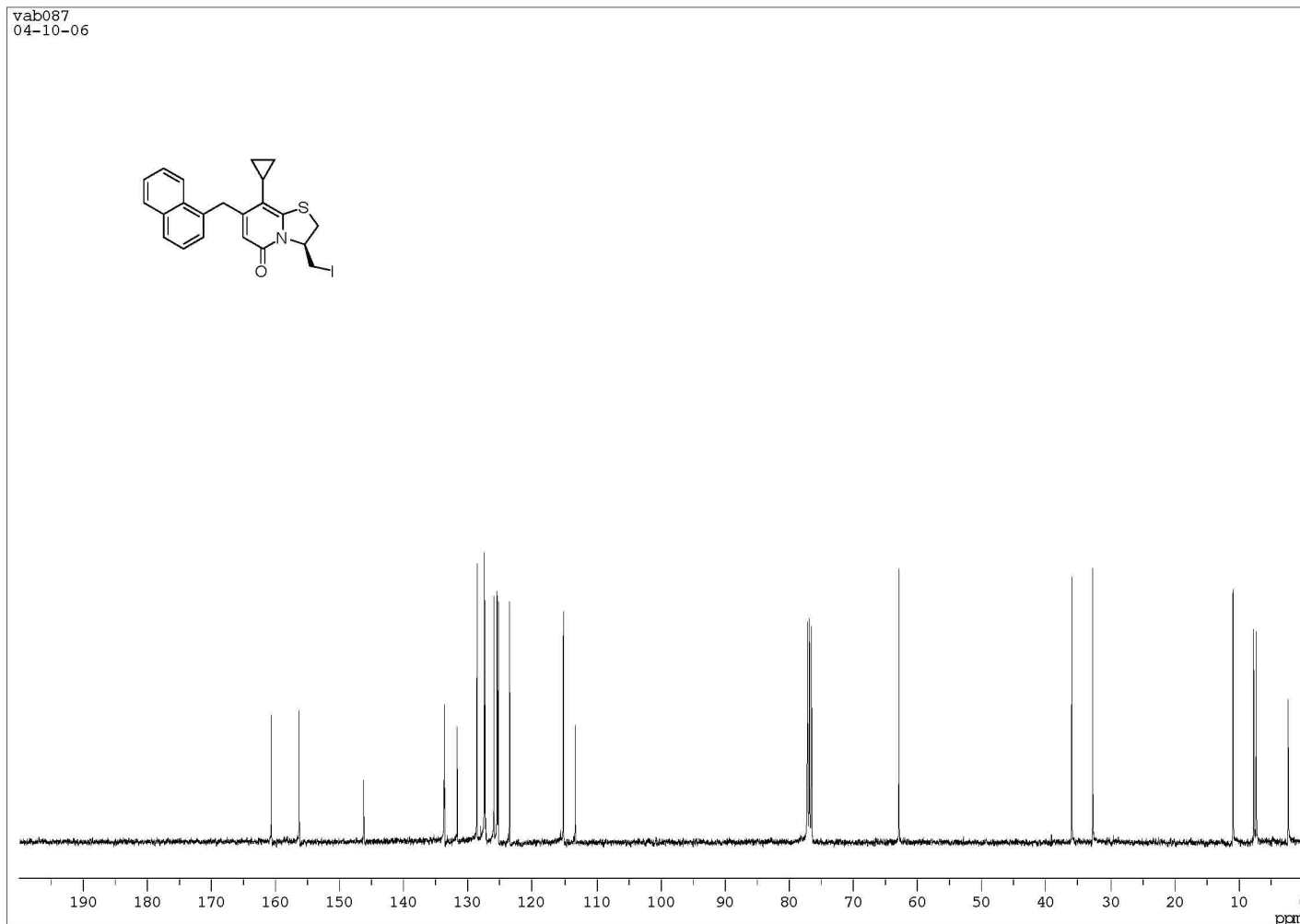
(Page 2-Page 9): ¹³C NMR spectra of compounds **3-10**

(Page 10-Page 12): Chiral HPLC chromatograms and conditions for compounds (+)-**1**, (-)-**3** and (-)-**5**

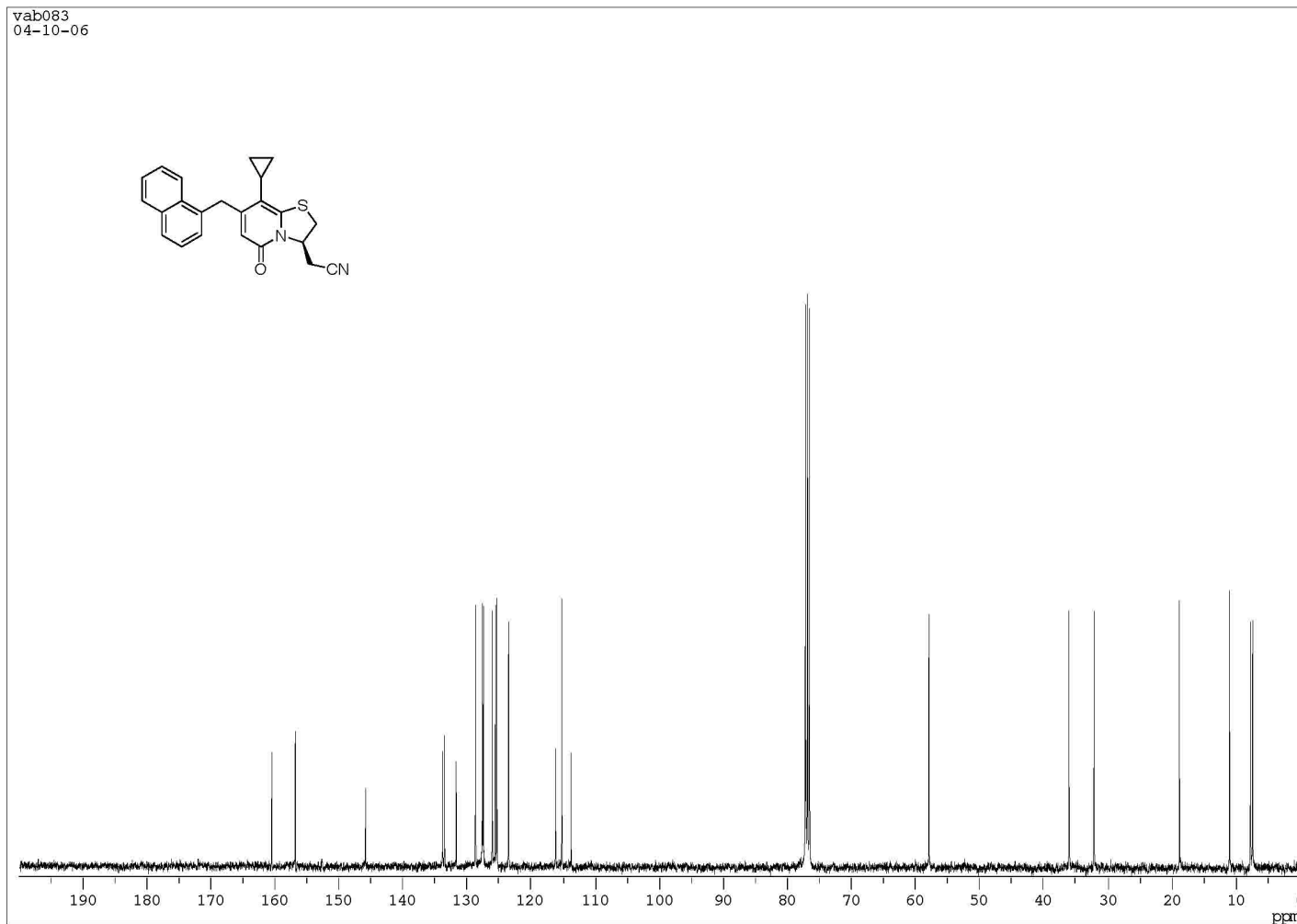
Compound (-)-3



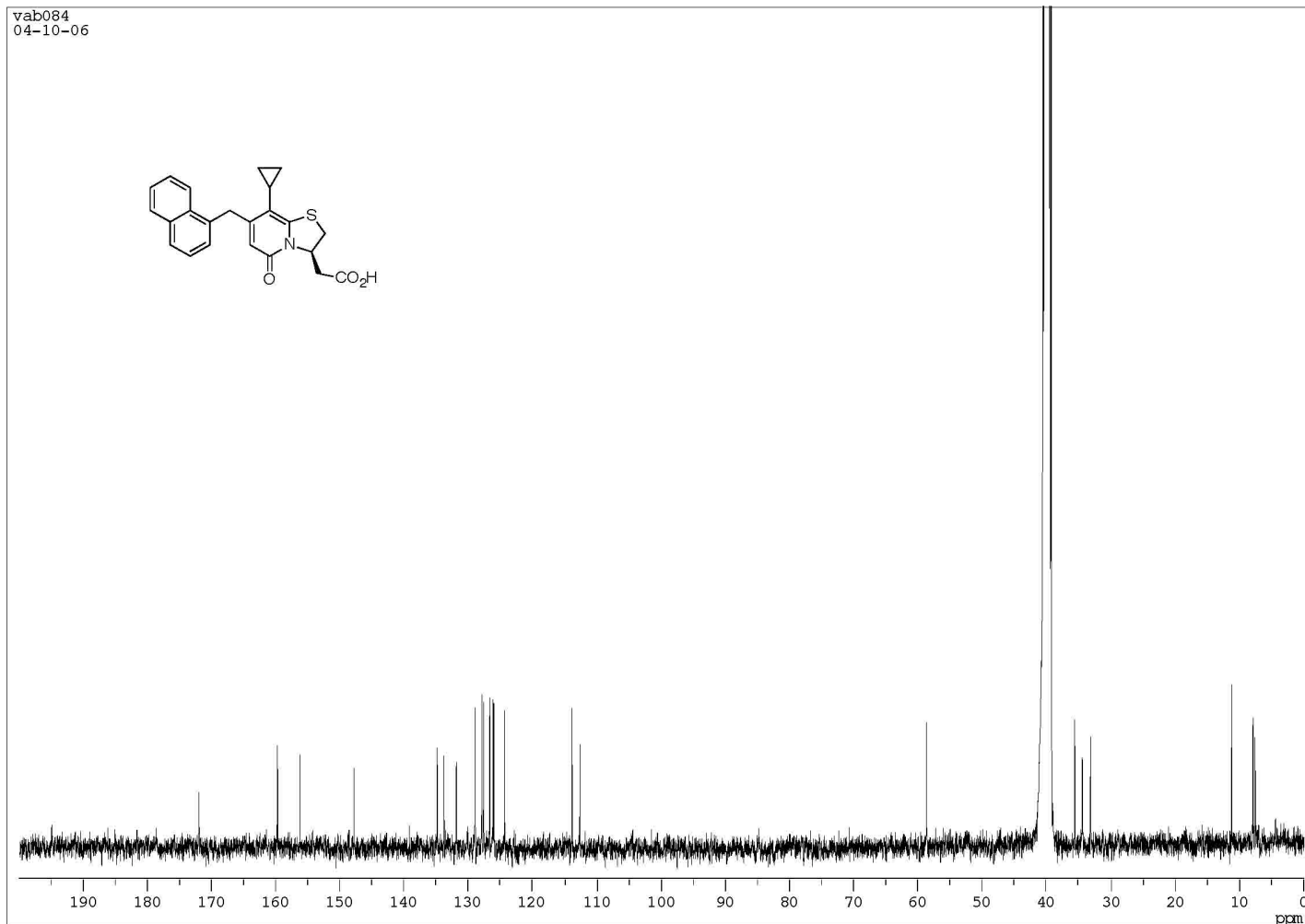
Compound (-)-4



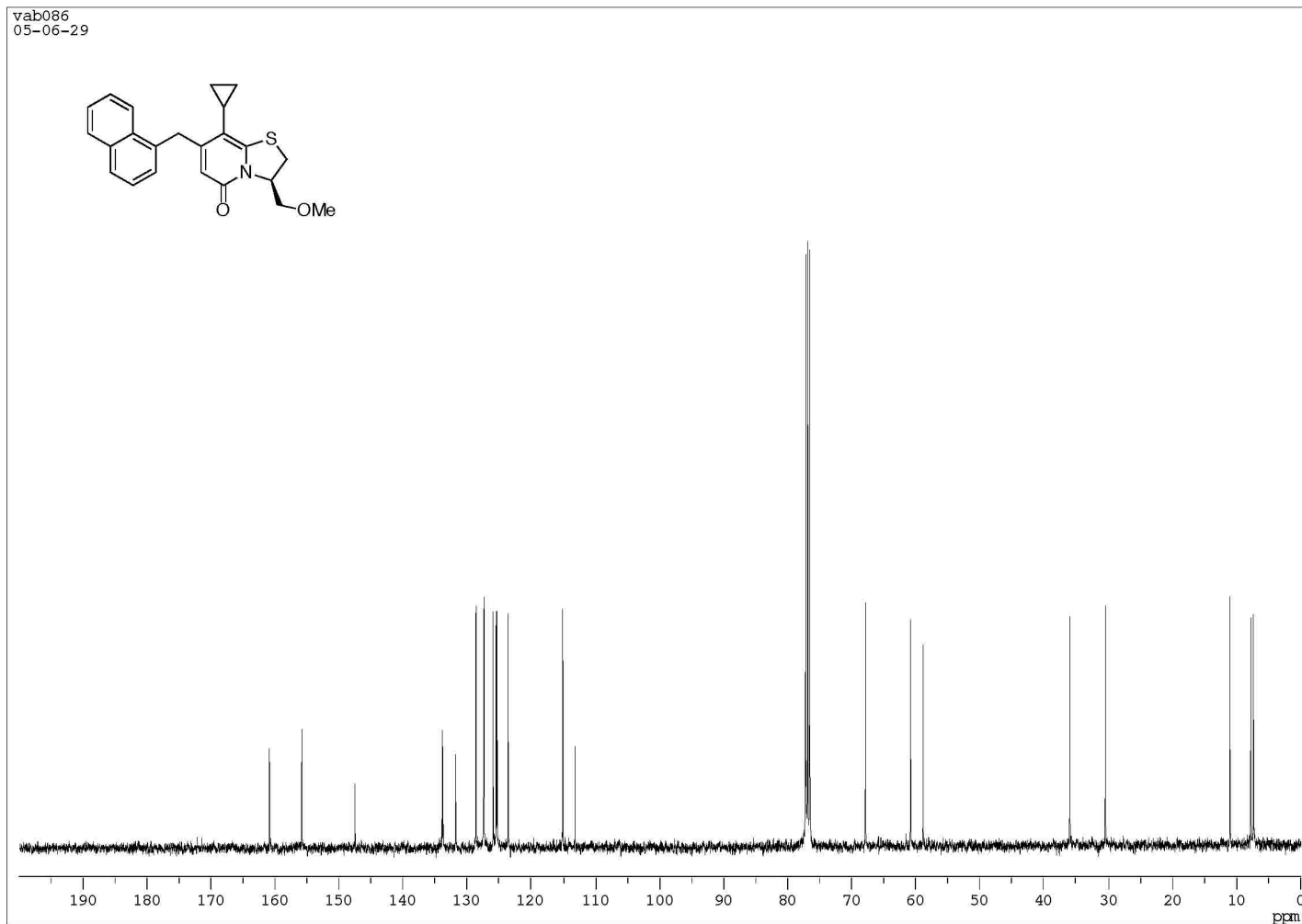
Compound (-)-5



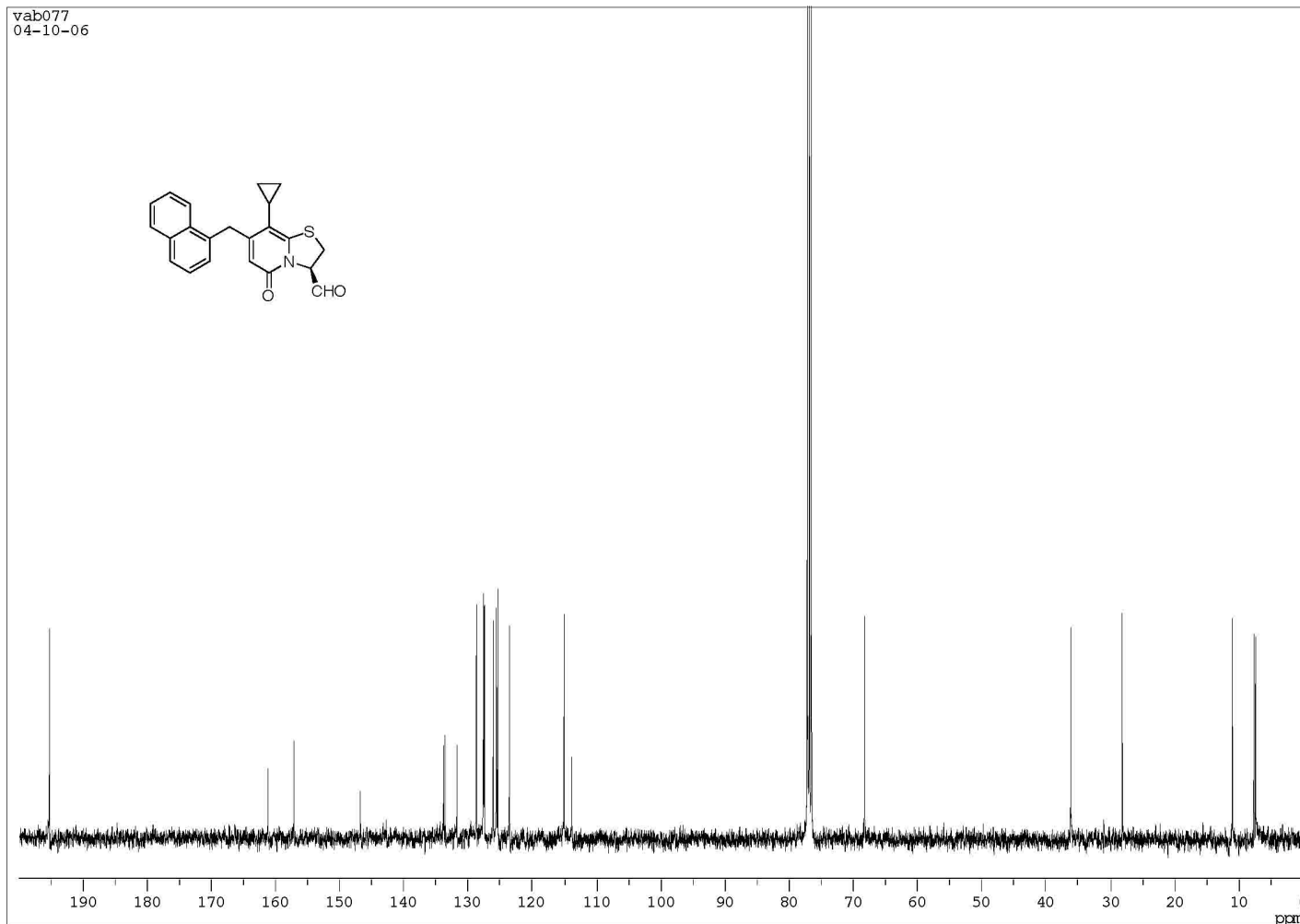
Compound (-)-6



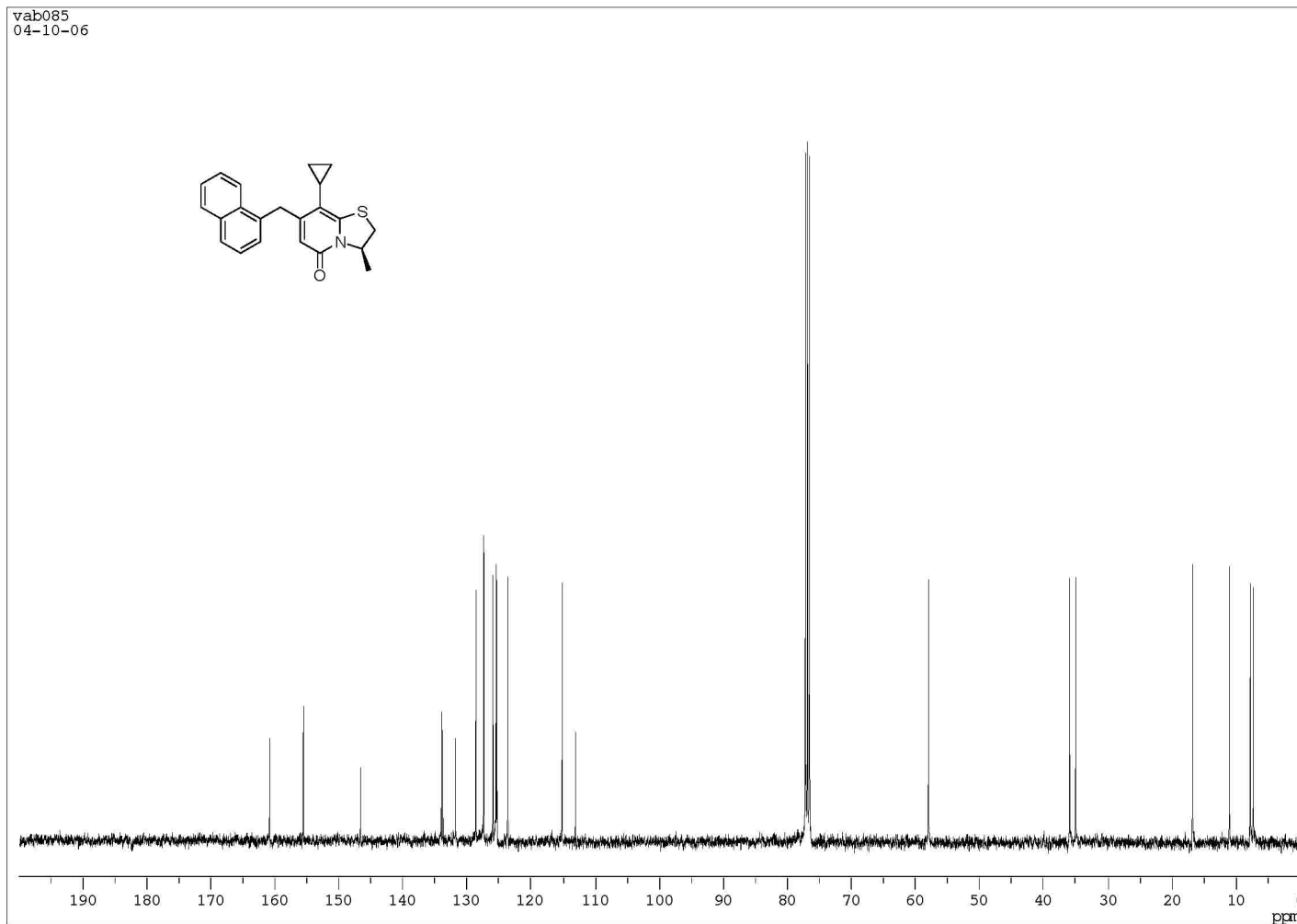
Compound (-)-7



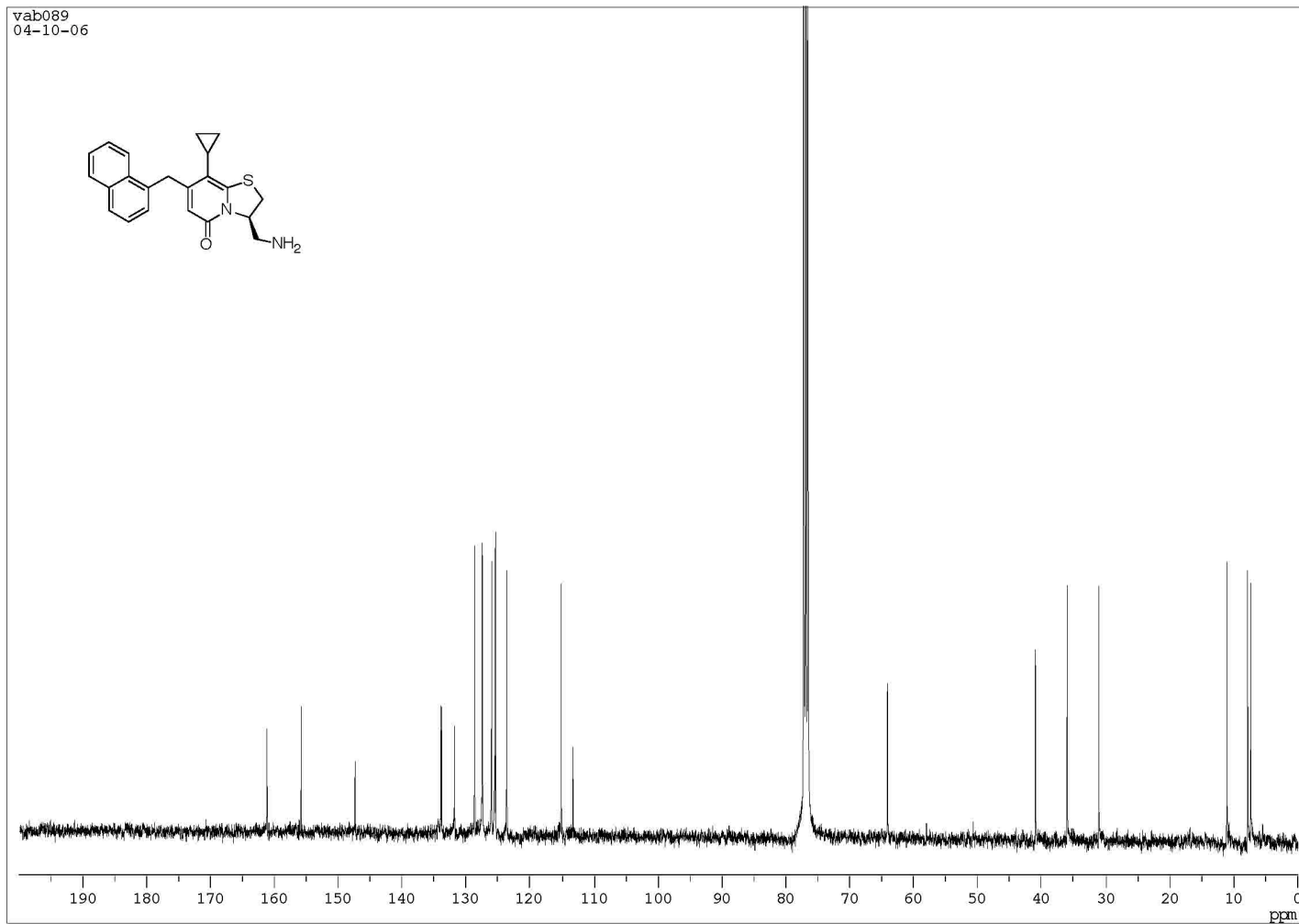
Compound (-)-8



Compound (-)-**9**



Compound (-)-10



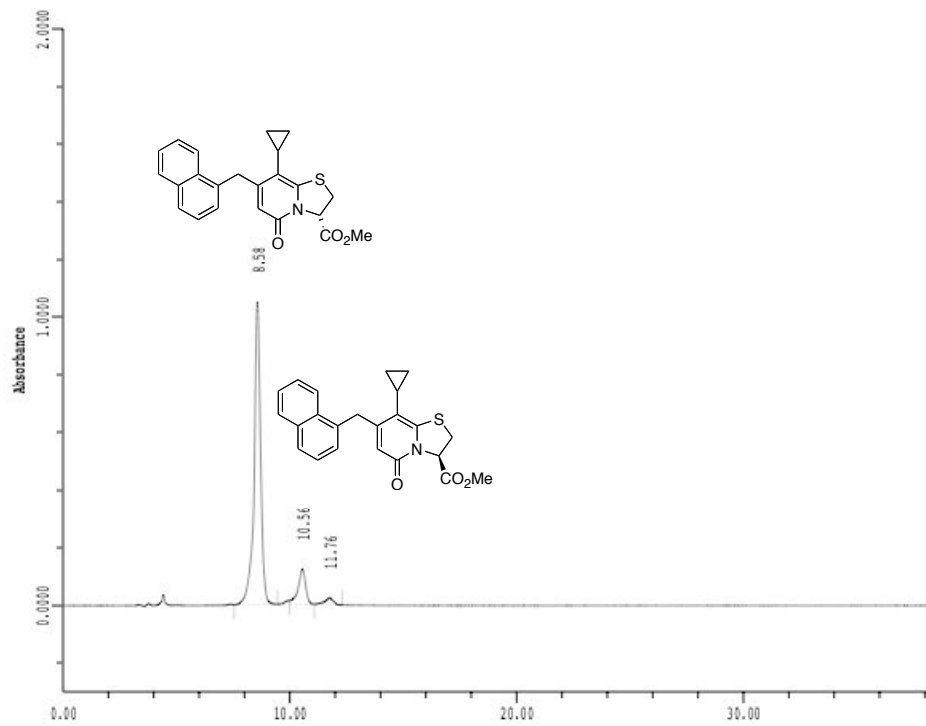
Column: (S,S)-Whelk-O1
Mobile phase: CH₂Cl₂:Hexane:2-propanol (12:12:1)
Flowrate: 1 ml/min

Analysed compound: (+)-1

NAME: CHAN LEV REP TYPE: DIRECTORY
COLLECTION DATA: 10145554 A 1 1 011g C:\GOLD\SYSTEM\DATA\SUSSE\1
METHOD: CHIRAL
REPORT DATA: 10145554 A 1 1 011g C:\GOLD\SYSTEM\DATA\SUSSE\1
METHOD: KIEHLER

TIME: INJECTION: 14:55:54 10 JAN 2005
ANALYSIS: 16:04:13 10 JAN 2005
REPORT: 14:19:22 31 JAN 2005

SAMPLE TABLE
SYSTEM 1: SYSTEM1
Chart Speed: 0.50 cm/min

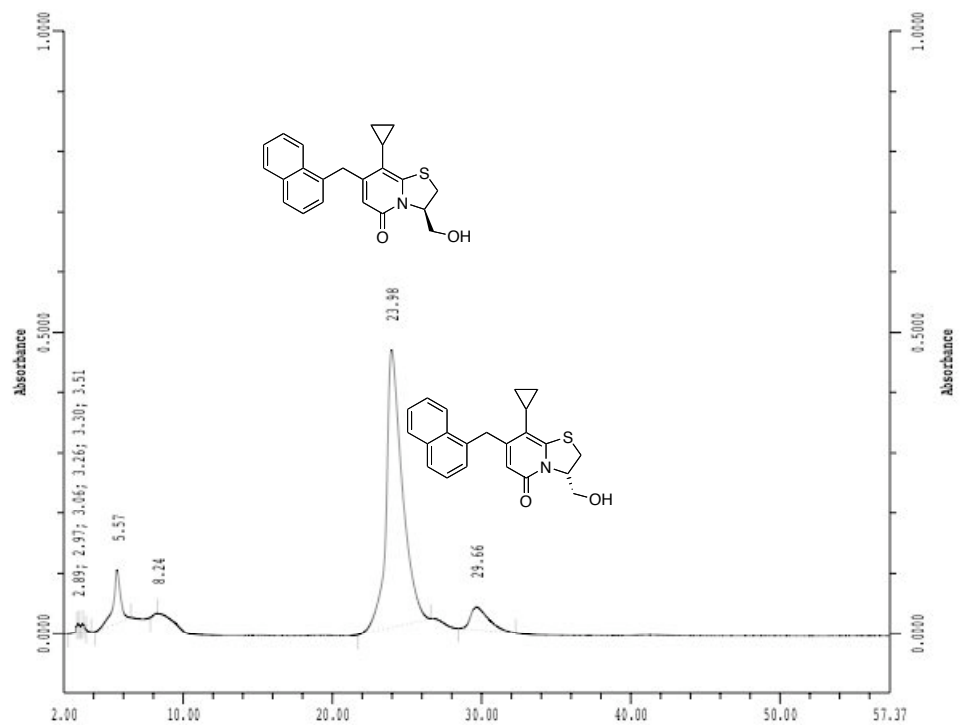


Column: (S,S)-Whelk-O1
Mobile phase: Hexane:2-propanol (7:3)
Flowrate: 1 ml/min

Analysed compound: (-)-3

NAME: CEAN LEV REP TYPE: DIRECTORY
COLLECTION DATE: 171116932 A 1 1 0619 C:\GOLD\SYS1027A\
METHOD FILE: C:\GOLD\SYS1027A\
TIME: DATE
INJECTION: 11:59:32 17 MAR 2005
ANALYSIS: 12:56:55 17 MAR 2005
REPORT: 15:28:11 1 JAN 1990

SAMPLE TABLE: none
SYSTEM: 1, SYSTEM1



Column: (S,S)-Whelk-O1
 Mobile phase: CH₂Cl₂:Hexane:2-propanol (12:12:1)
 Flowrate: 1 ml/min

Analysed compound: (-)-5

NAME: CHAN LEV REP TYPE: DIRECTORY
 COLLECTION DATA: 02151554 A 1 1 0119 C:\GOLD\SYSTEMA\
 METHOD: HPLC C:\GOLD\SYSTEMA\
 TIME: 15:15:54 2 JAN 1990
 ANALYSIS: 16:15:55 2 JAN 1990
 REPORT: 17:40:11 2 JAN 1990

SAMPLE TABLE
 SYSTEM 1: SYSTEM1

