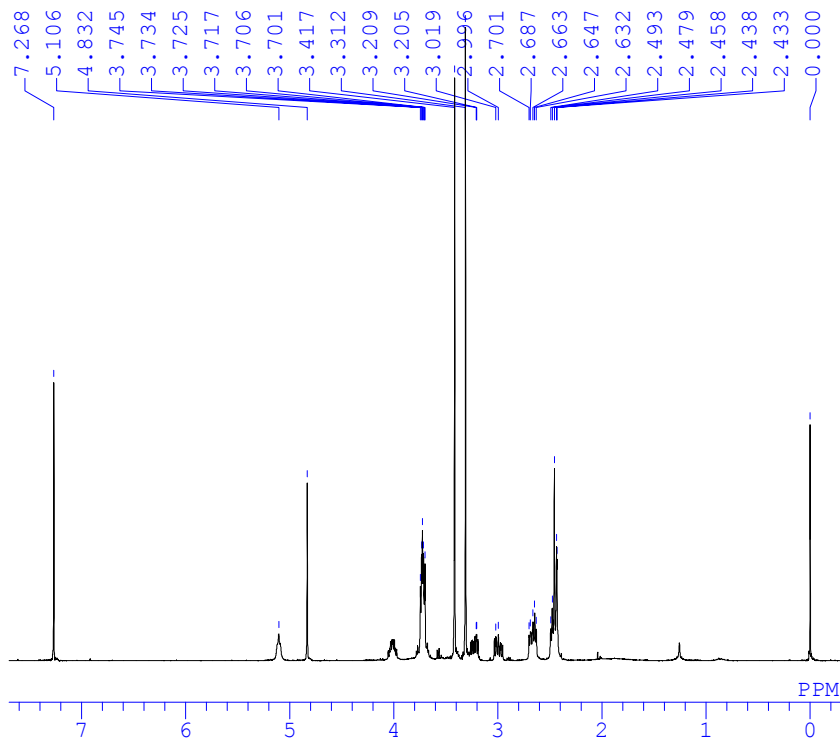
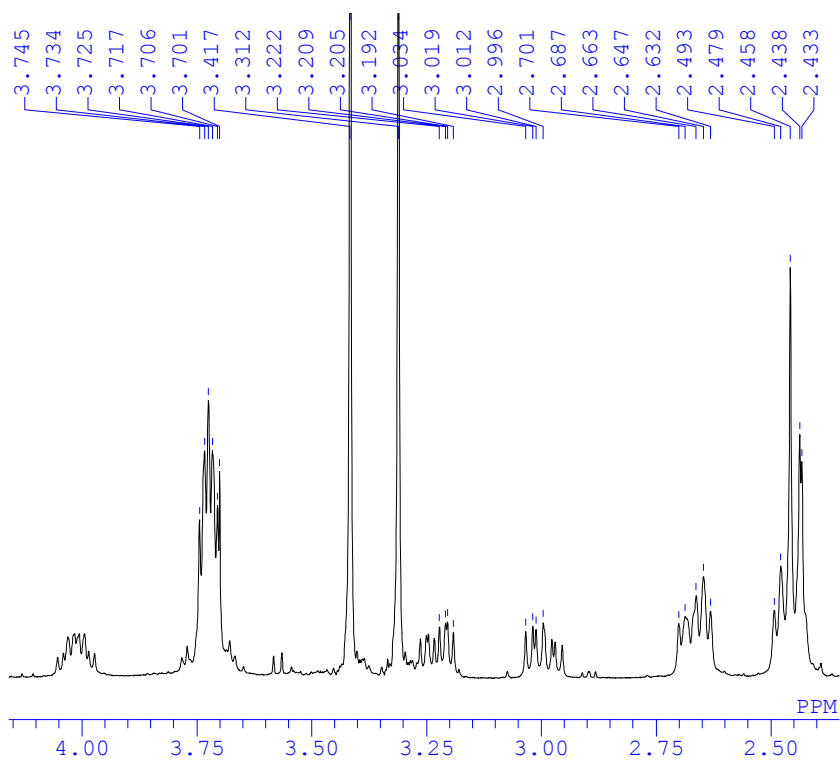


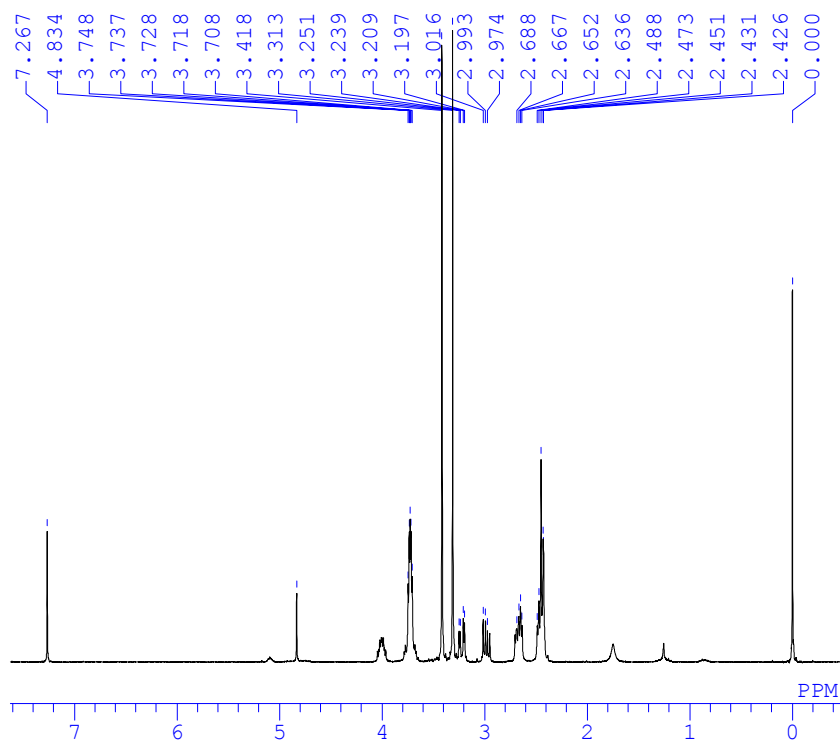
^1H NMR spectrum of **12**



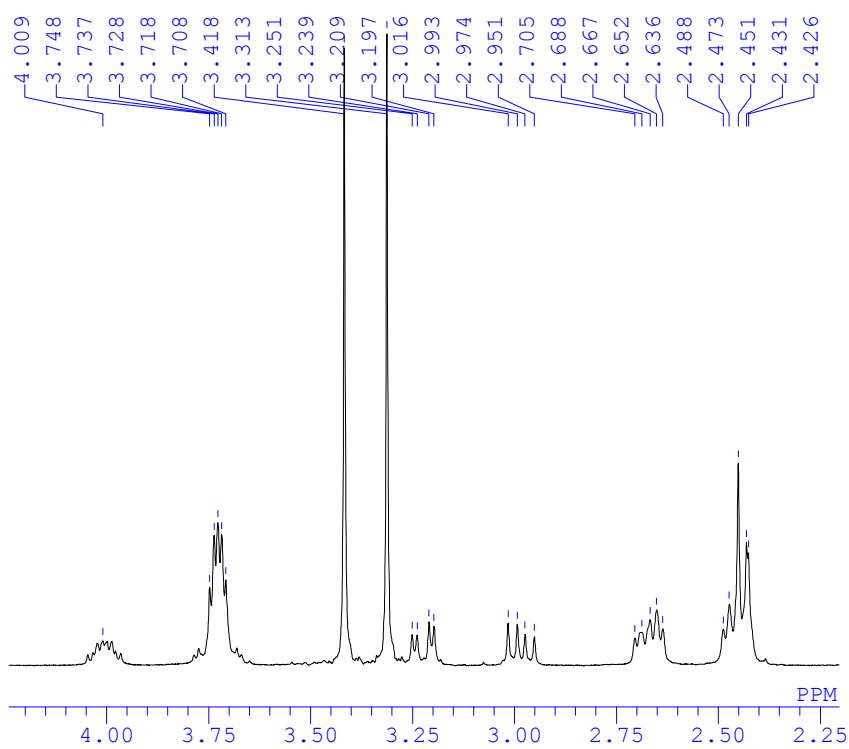
Expanded ^1H NMR spectrum of **12**



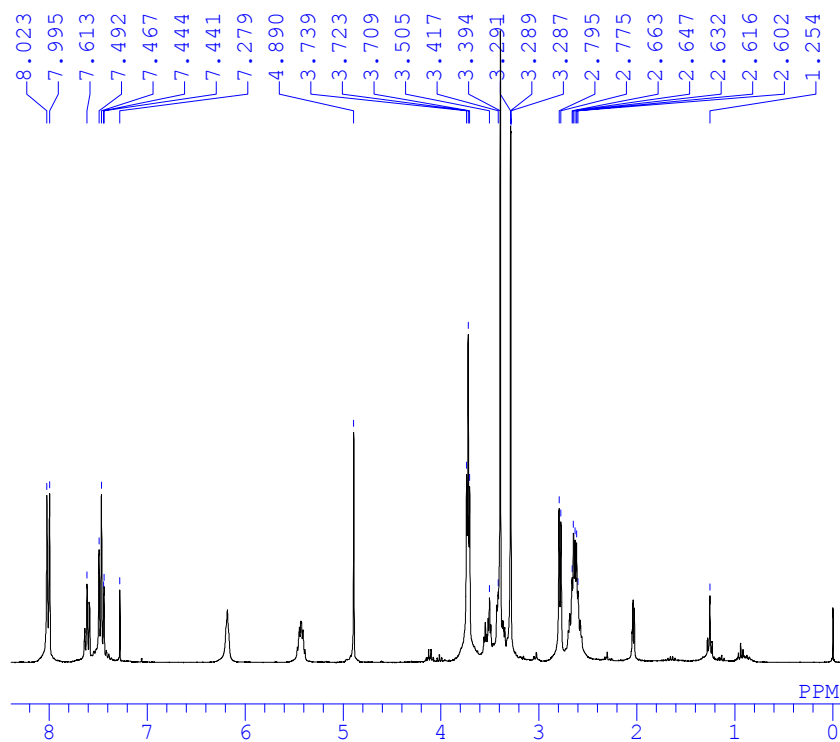
^1H NMR spectrum of **12** (with D_2O exchange)



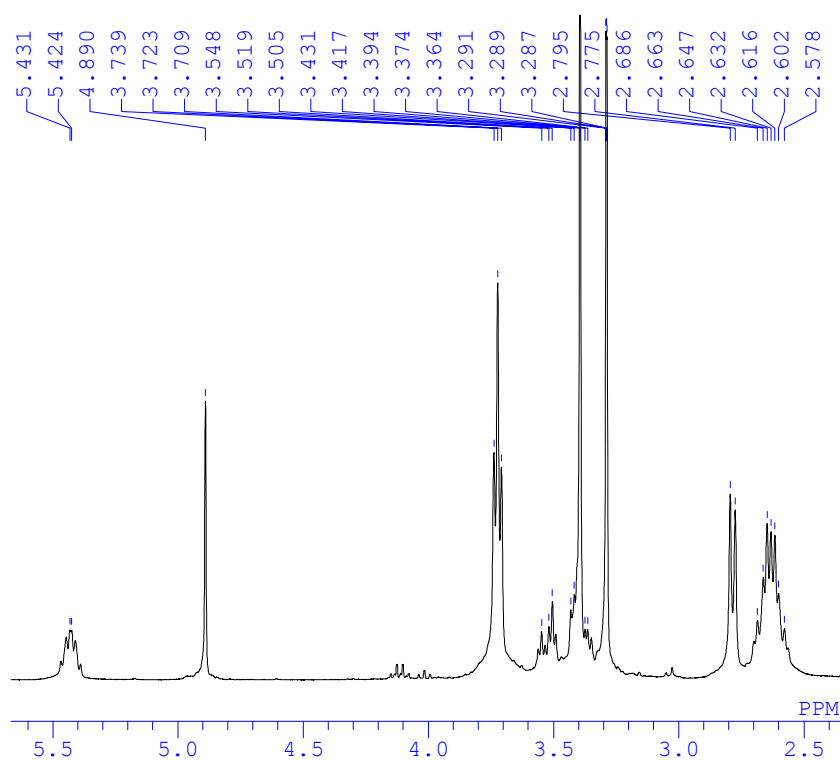
Expanded ^1H NMR spectrum of **12** (with D_2O exchange)



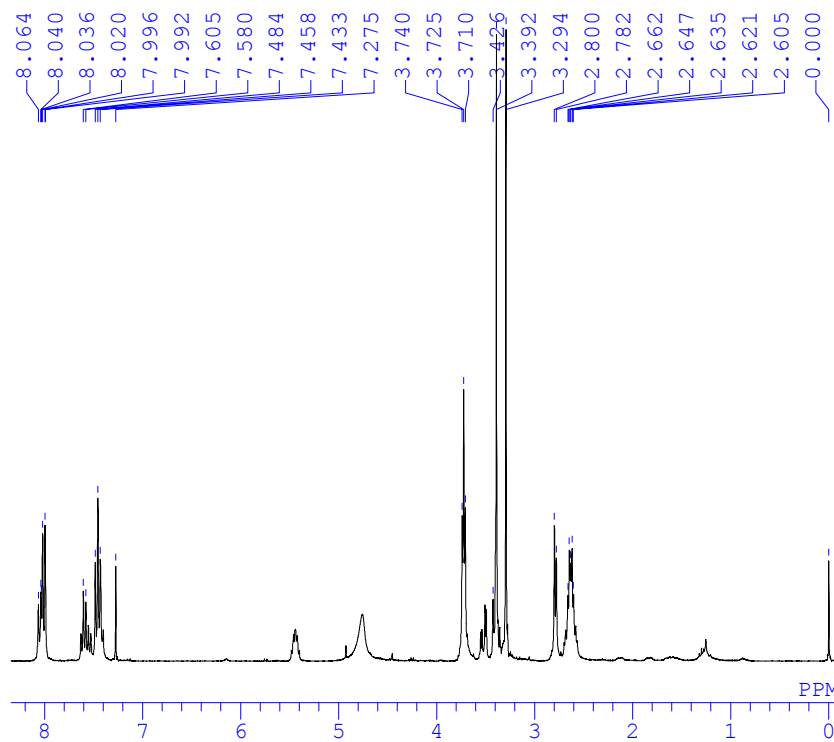
^1H NMR spectrum of **18**



Expanded ^1H NMR spectrum of **18**



^1H NMR spectrum of **18** (with D_2O exchange)



Expanded ^1H NMR spectrum of **18** (with D_2O exchange)

