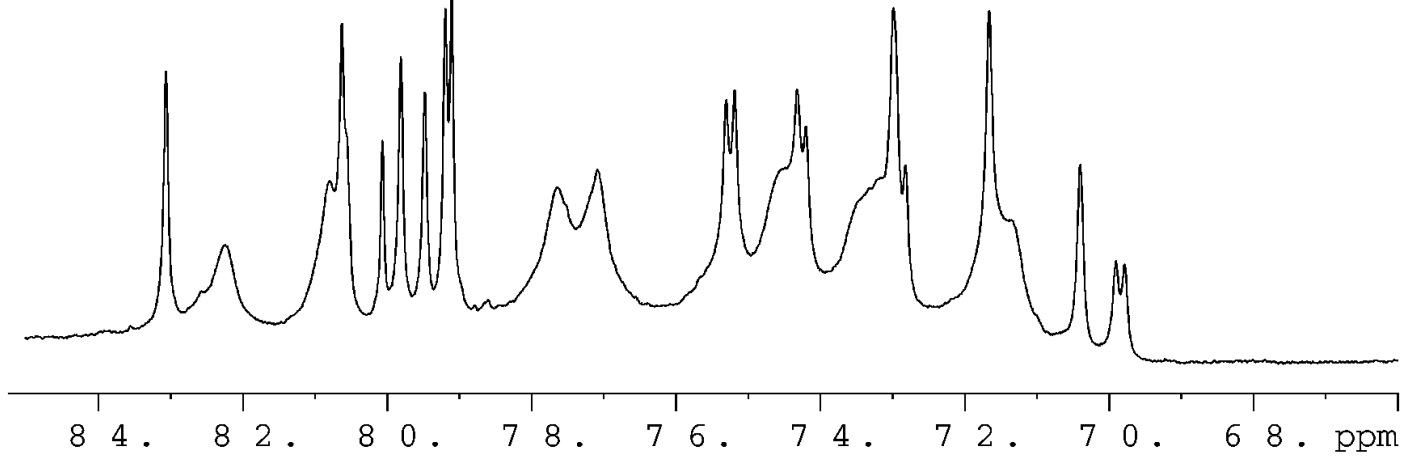
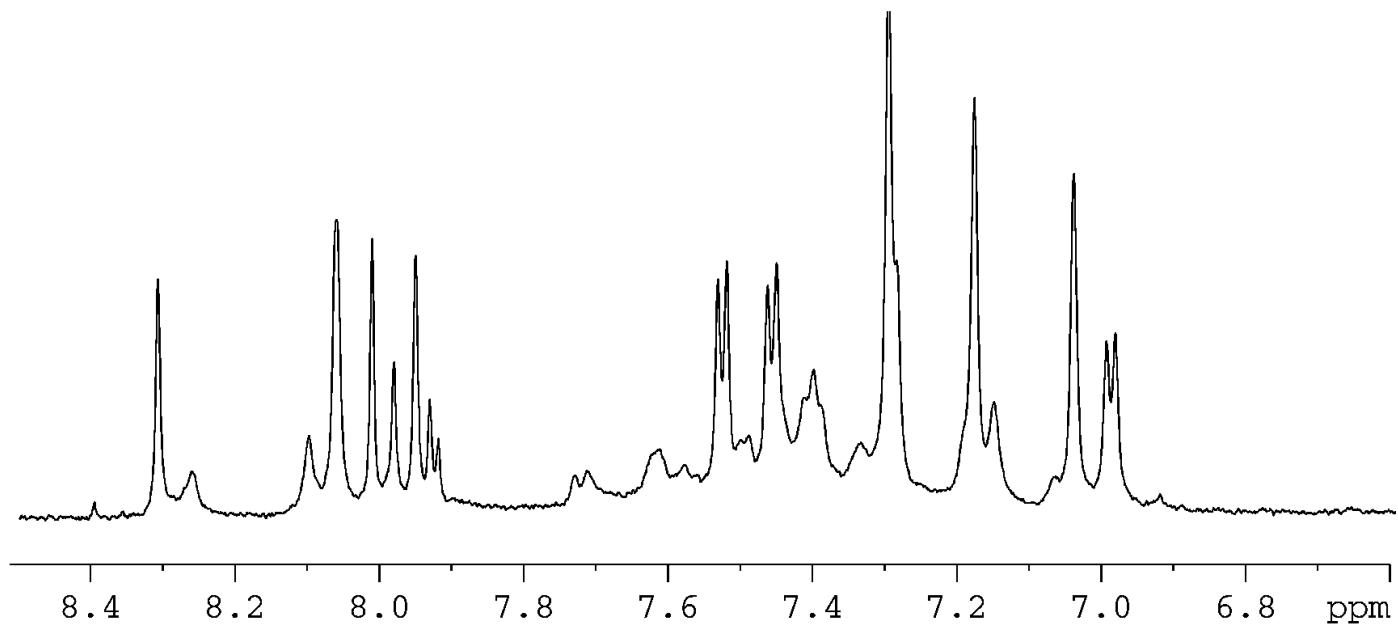


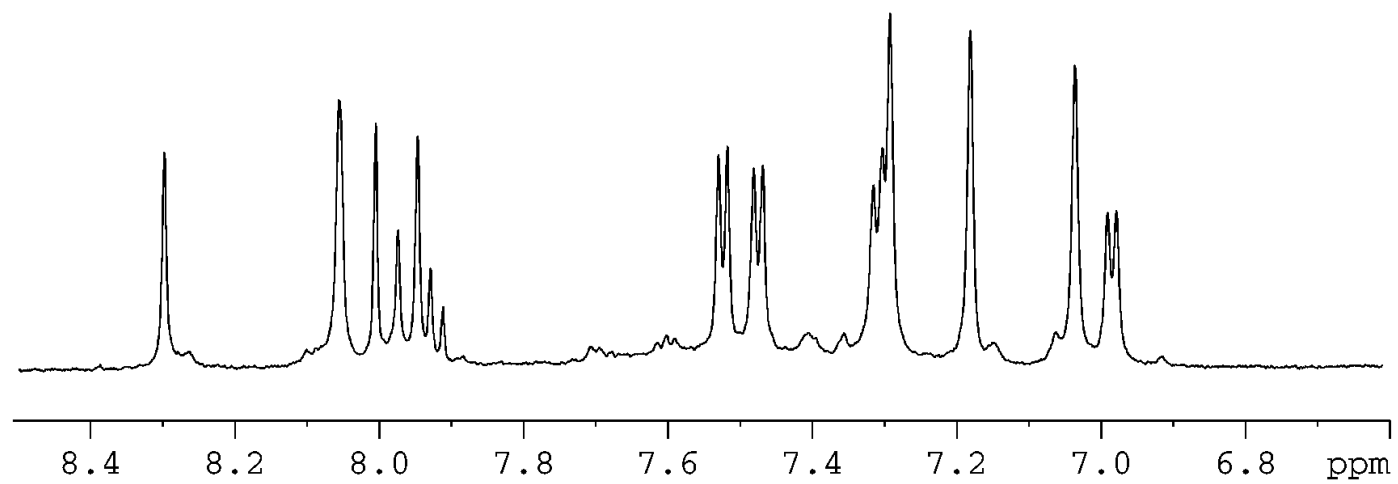
A)



B)



C)



Supplementary Figure:

1D NMR spectra of the base H6/H8 region of the 13-mer showing the concentration sensitivity of the resonances from the duplex species. The spectra were recorded at 298K, with the oligonucleotide samples in 100mM sodium chloride, 10 sodium phosphate, pH 7.0 and at the following concentrations: (a) 2mM DNA, (b) 1mM DNA, (c) 0.5mM DNA.