

Supplementary Material (ESI) for Organic & Biomolecular Chemistry  
This journal is (c) The Royal Society of Chemistry 2007

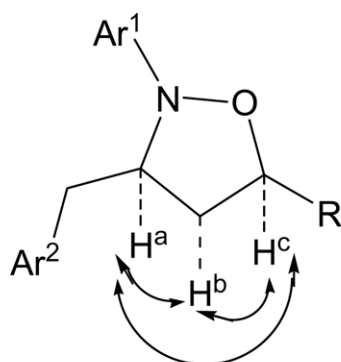
**Palladium-Catalyzed Sequential One-Pot Reaction of Aryl Bromides with  
*O*-Homoallylhydroxylamines : Synthesis of *N*-Aryl- $\beta$ -Amino alcohols**

Jinsong Peng,<sup>ab</sup> Dahong Jiang,<sup>ab</sup> Wenqing Lin,<sup>a</sup> and Yuanwei Chen<sup>\*a</sup>

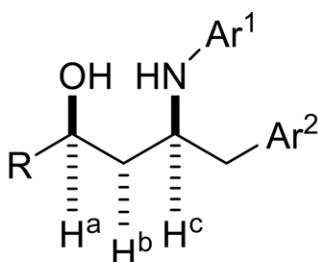
<sup>a</sup> Key Laboratory of Asymmetric Synthesis & Chirotechnology of Sichuan Province and  
Union Laboratory of Asymmetric Synthesis, Chengdu Institute of Organic Chemistry,  
Chinese Academy of Sciences, Chengdu, 610041, China. E-mail: [chenyw@cioc.ac.cn](mailto:chenyw@cioc.ac.cn)

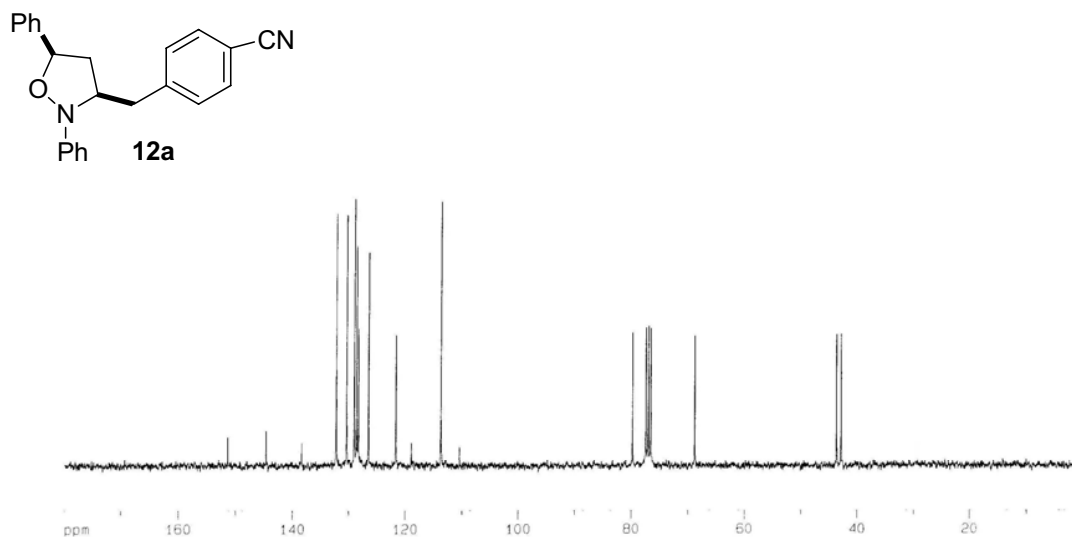
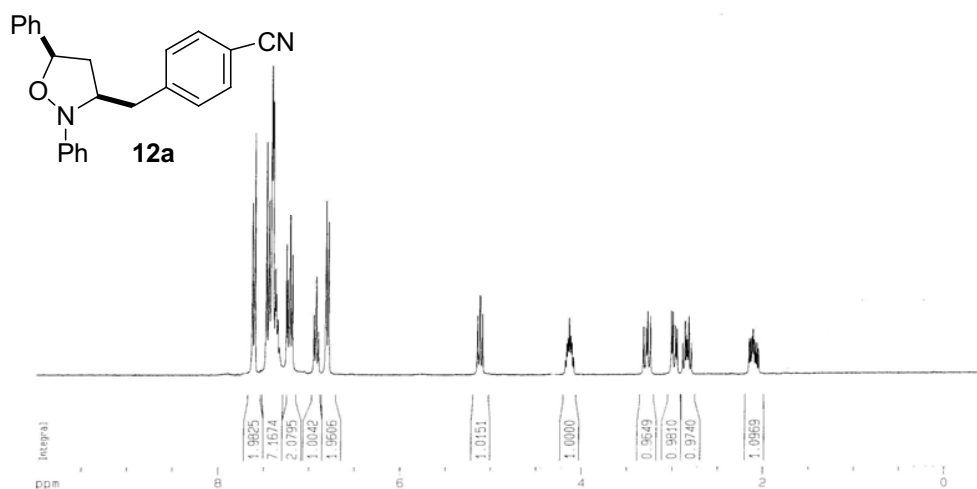
<sup>b</sup> Graduate School of Chinese Academy of Sciences, Beijing, 100039, China.

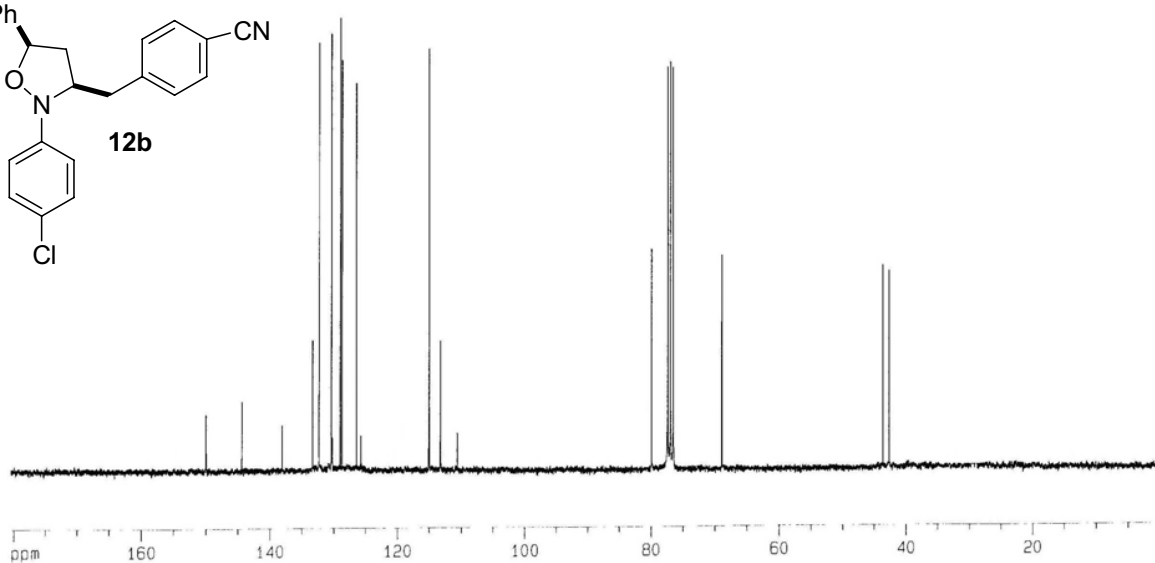
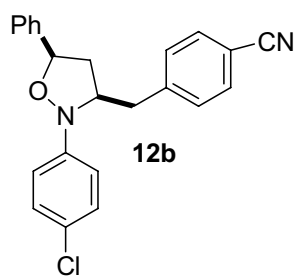
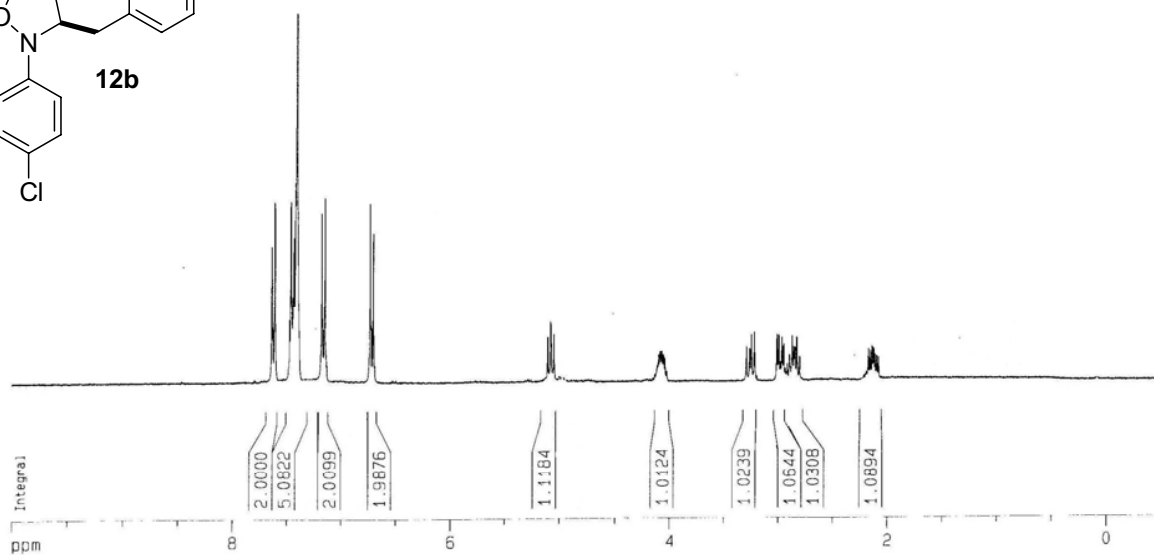
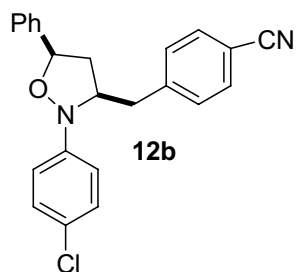
The relative *syn*-stereochemistry for the isoxazolidines was confirmed by  
NOESY-measurements. NOE's were observed between H<sup>a</sup> and both H<sup>b</sup> and H<sup>c</sup>.



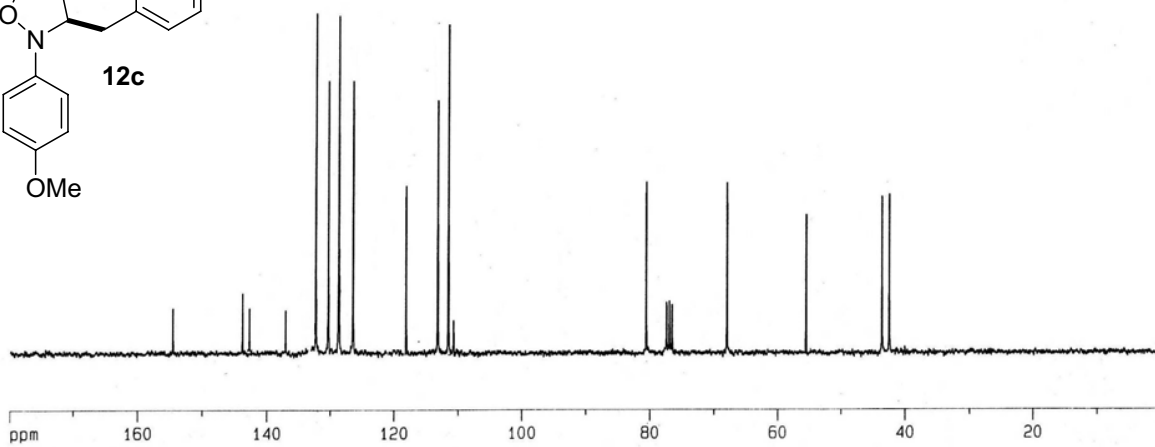
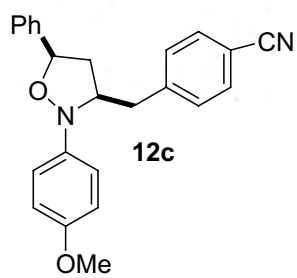
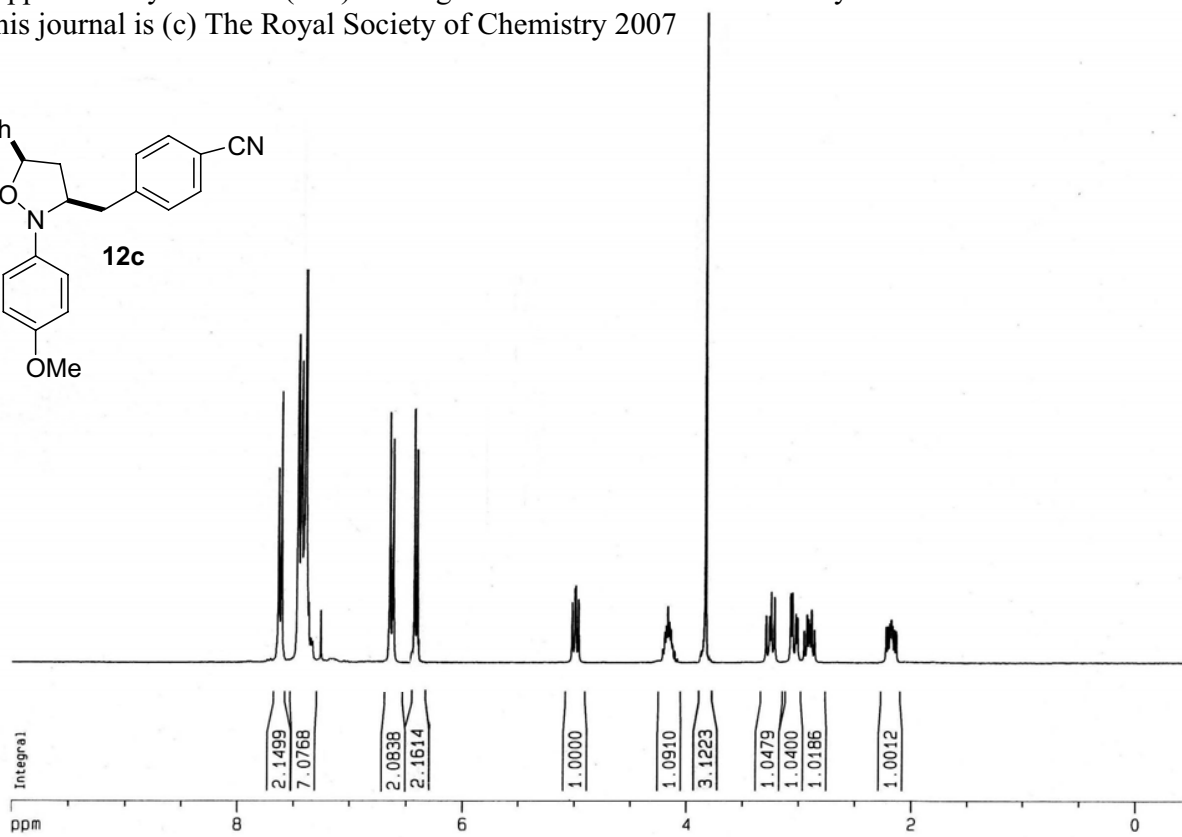
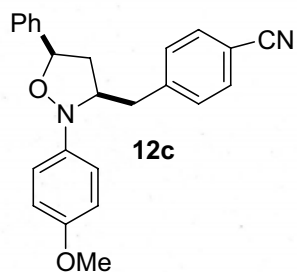
The relative *syn*-stereochemistry for the *N*-aryl- $\beta$ -amino alcohols was confirmed by  
NOESY-measurements. NOE's were observed between H<sup>a</sup> and both H<sup>b</sup> and H<sup>c</sup>.

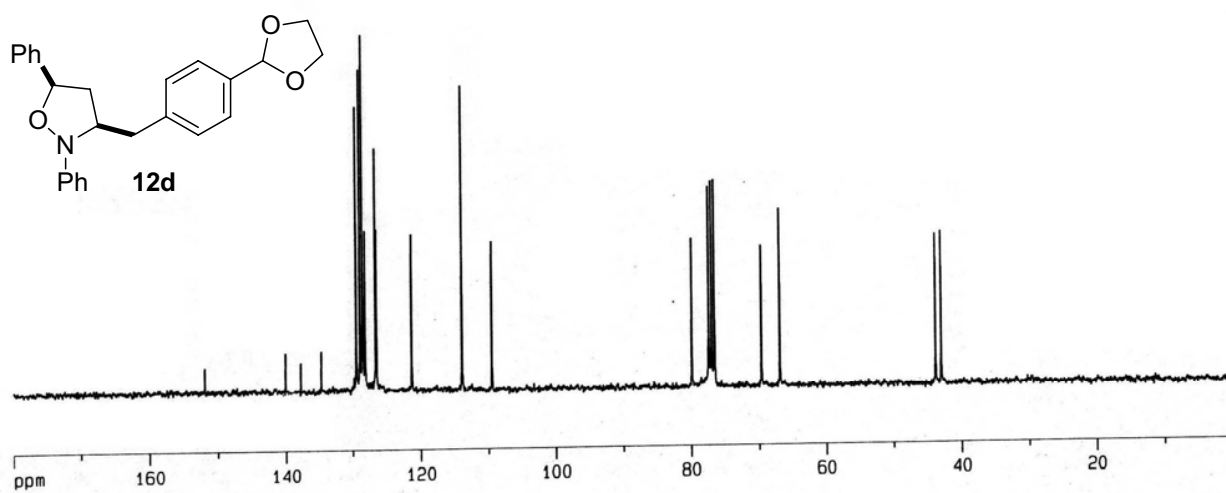
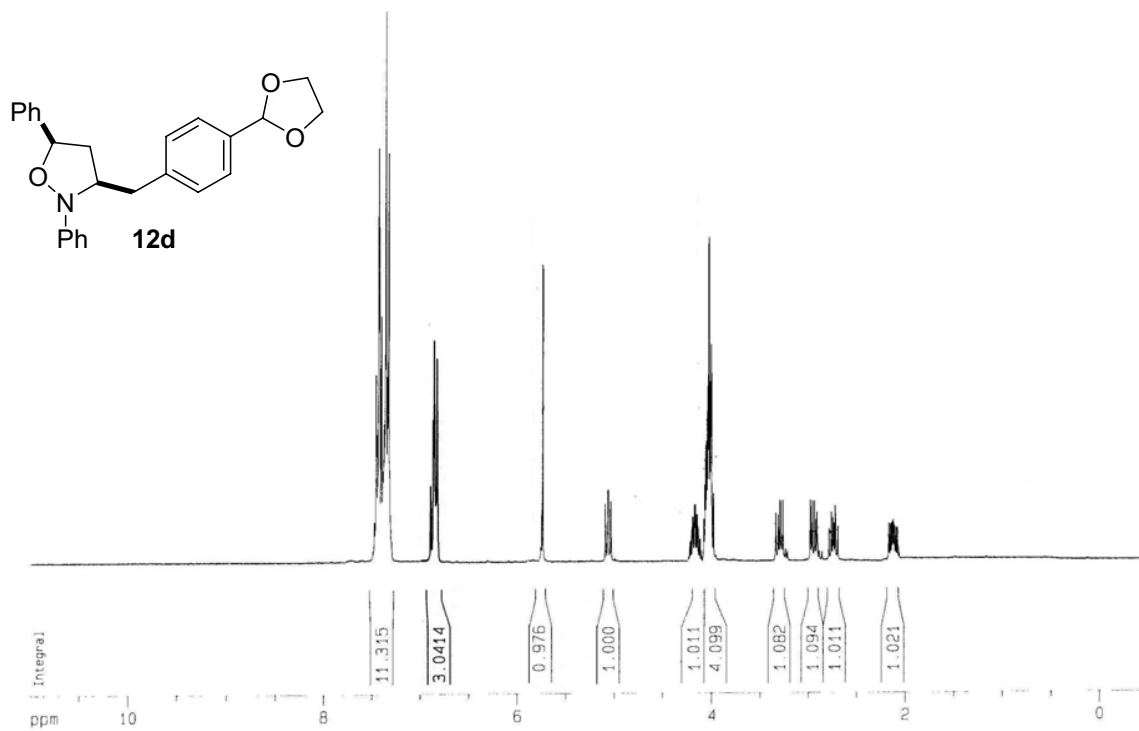




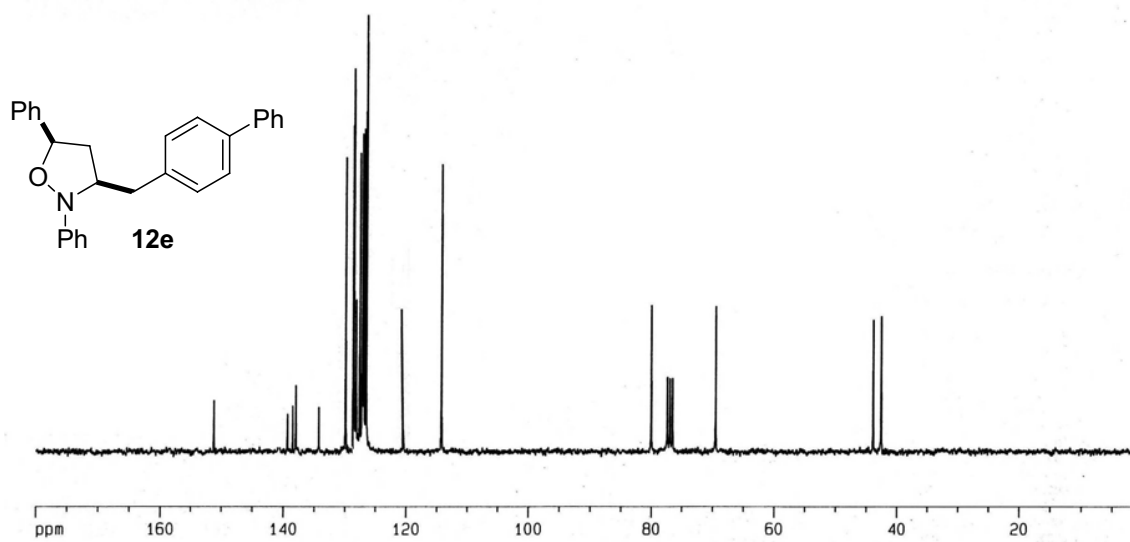
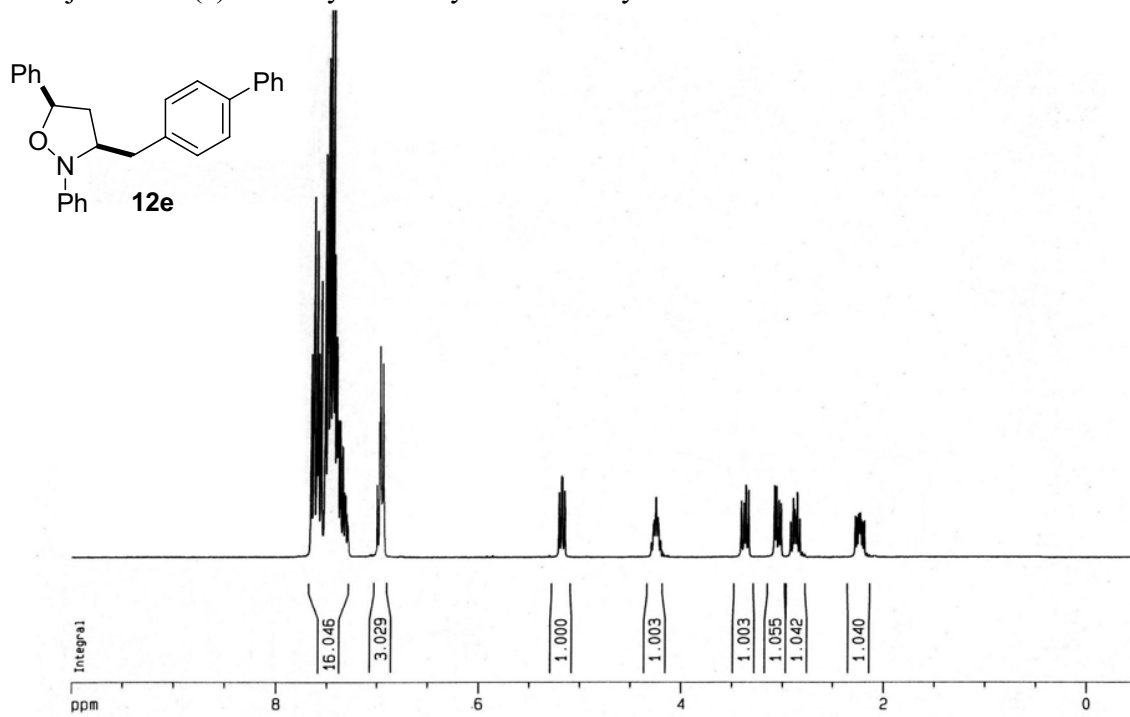


Supplementary Material (ESI) for Organic & Biomolecular Chemistry  
This journal is (c) The Royal Society of Chemistry 2007

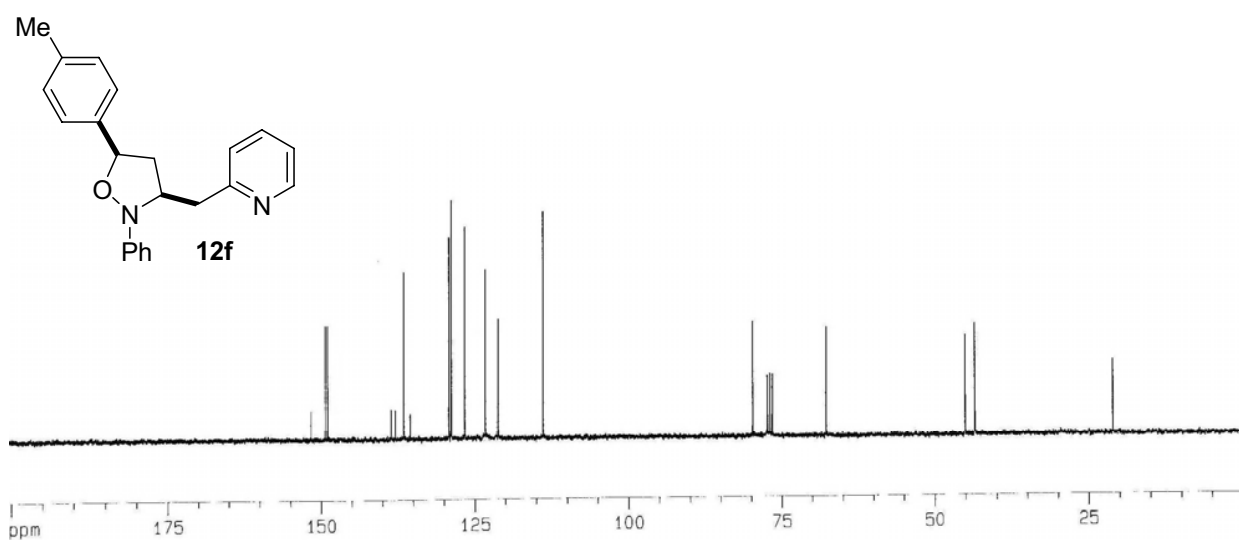
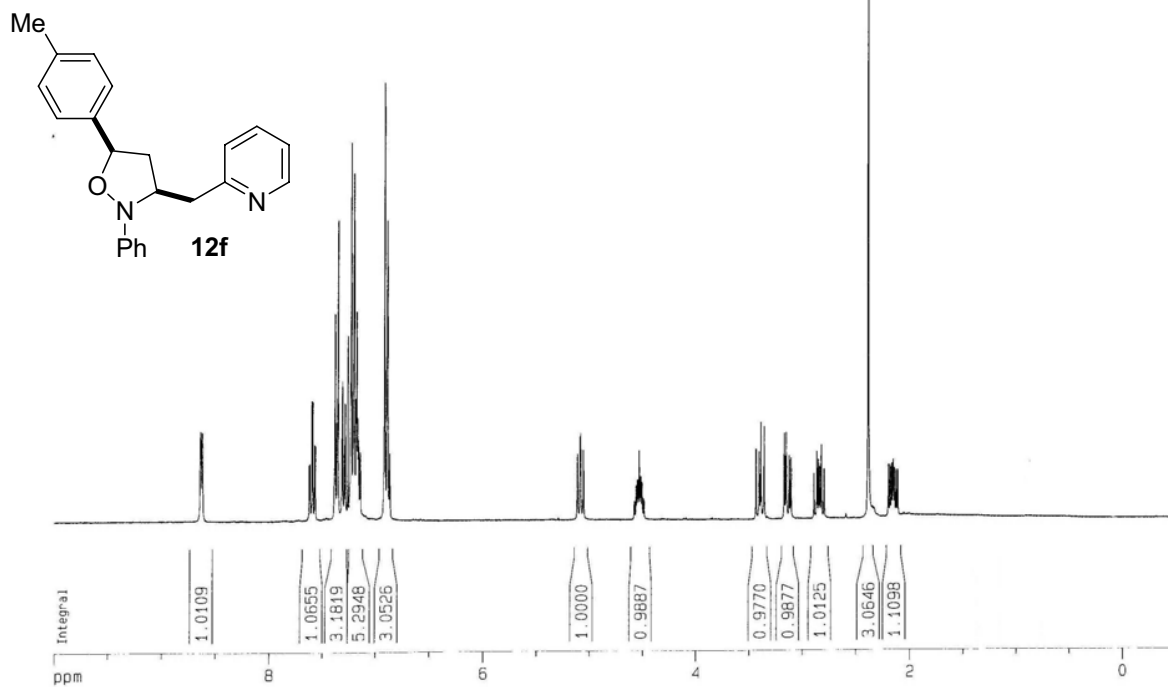




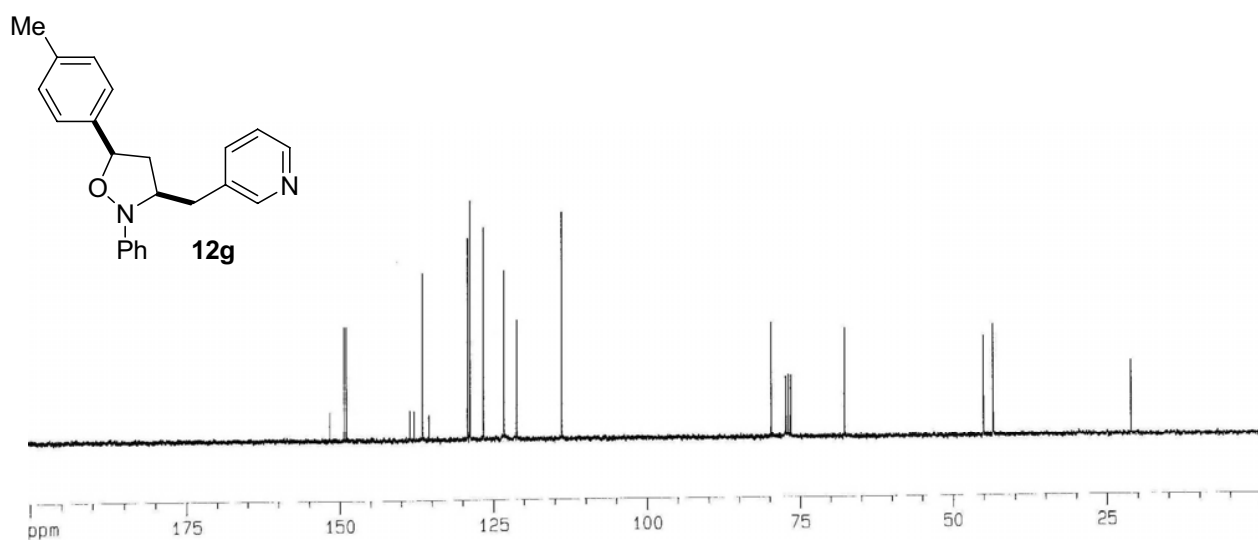
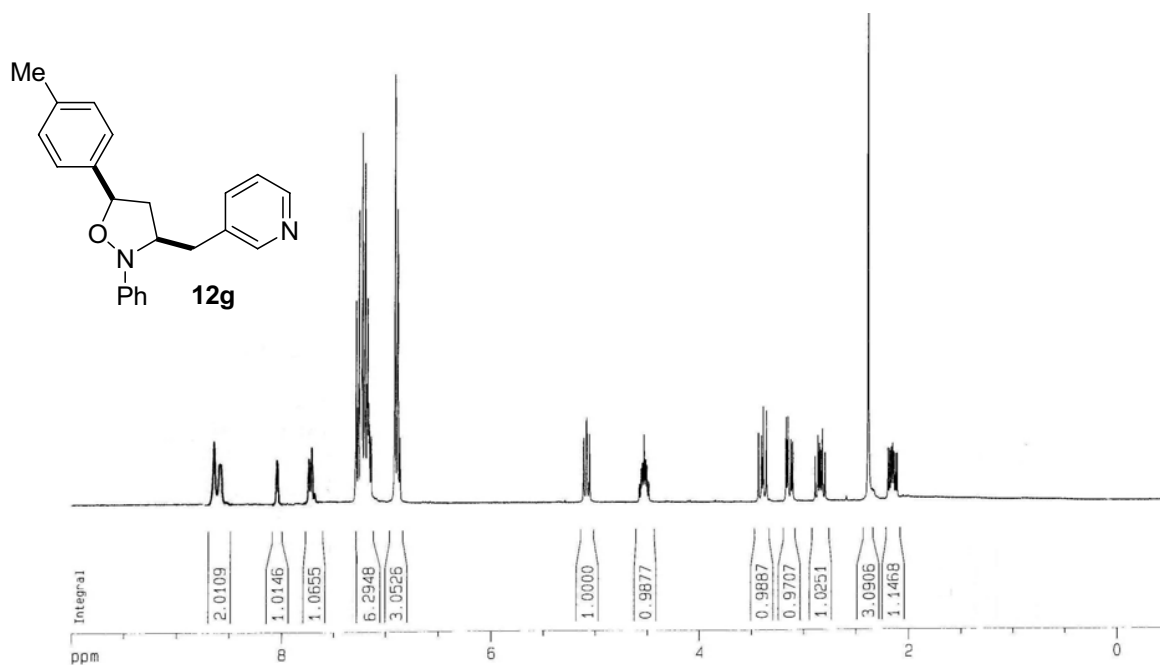
Supplementary Material (ESI) for Organic & Biomolecular Chemistry  
This journal is (c) The Royal Society of Chemistry 2007



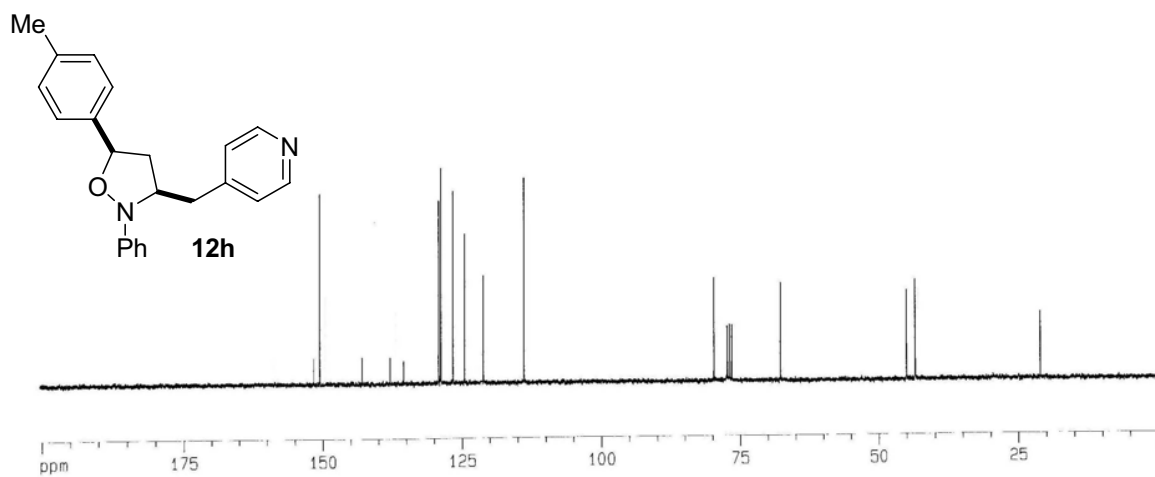
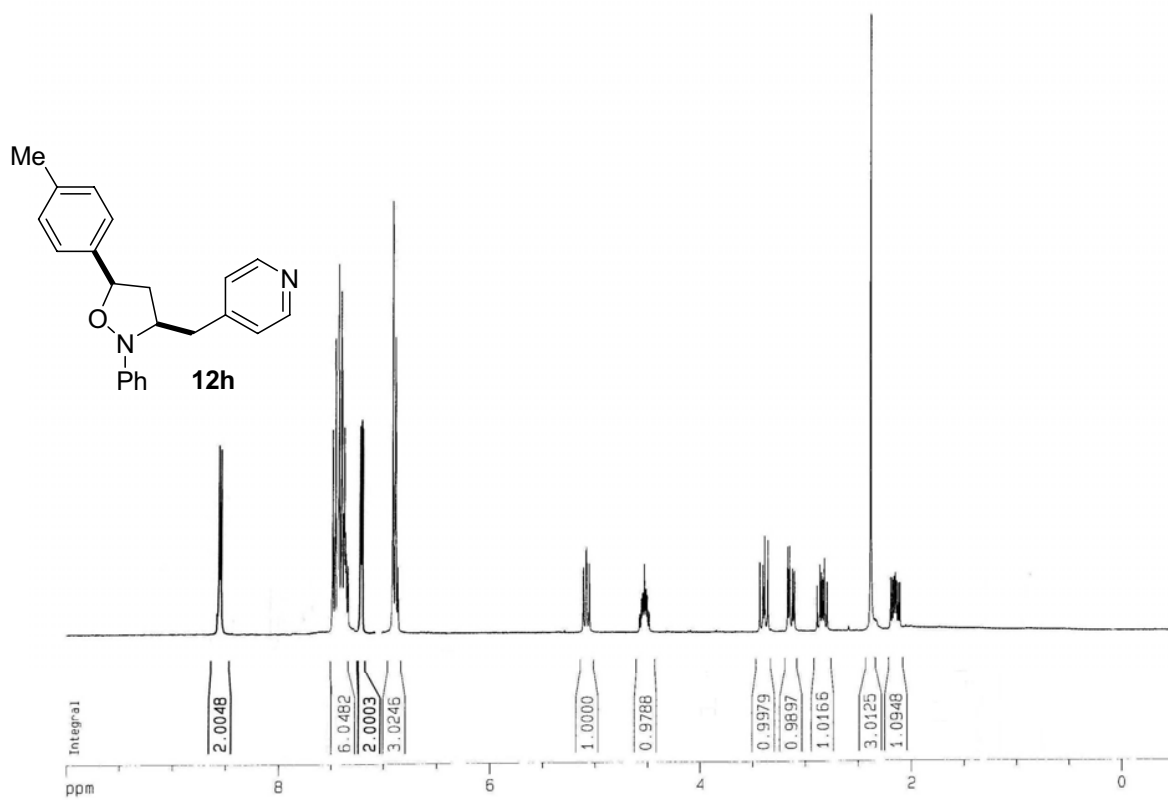
Supplementary Material (ESI) for Organic & Biomolecular Chemistry  
This journal is (c) The Royal Society of Chemistry 2007

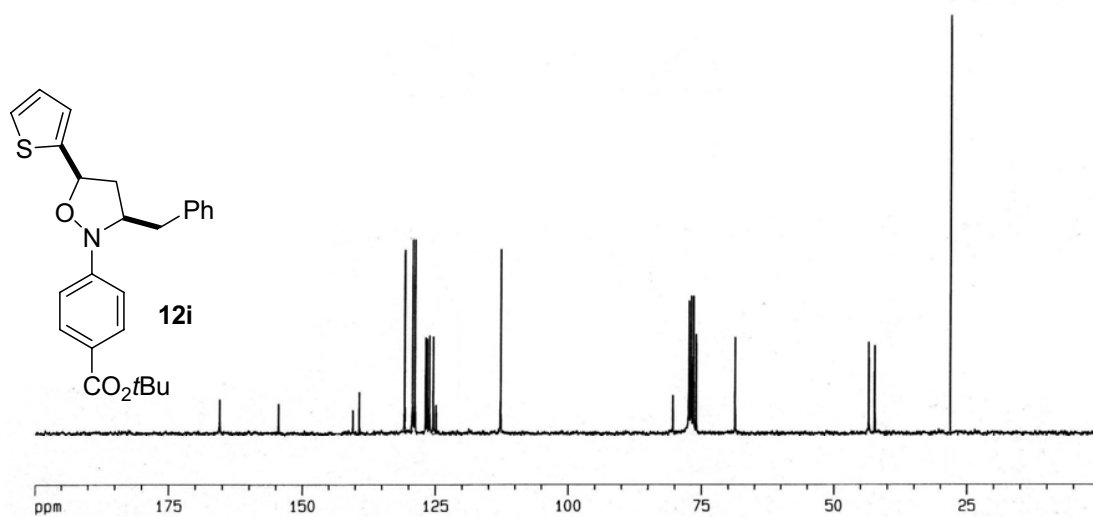
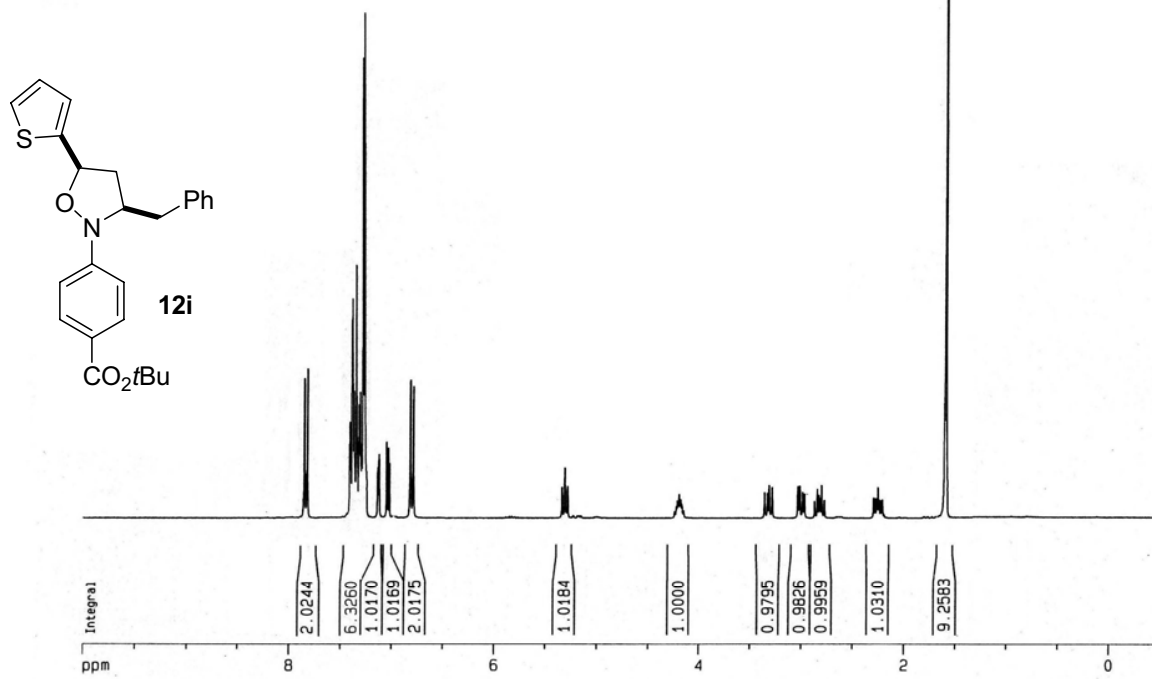


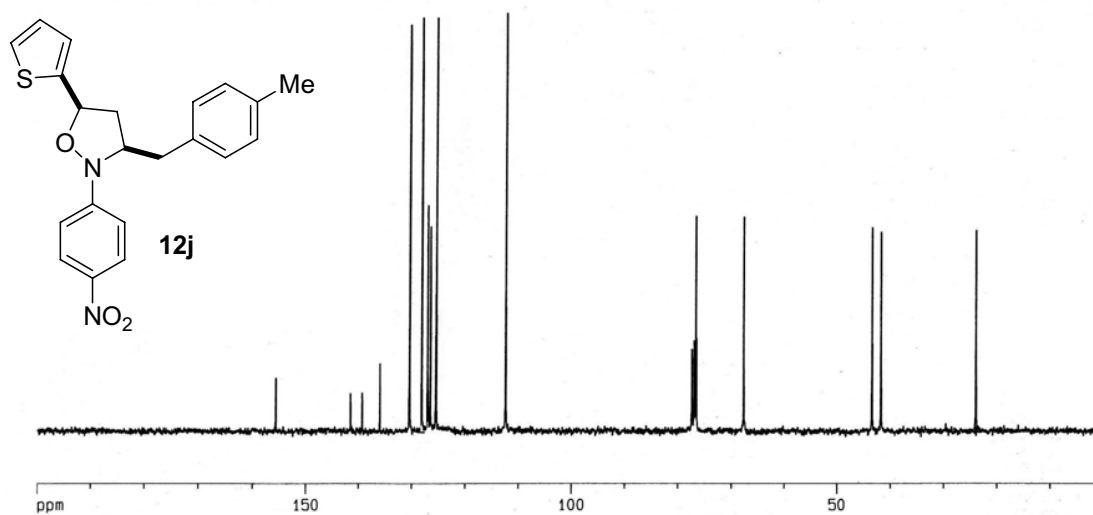
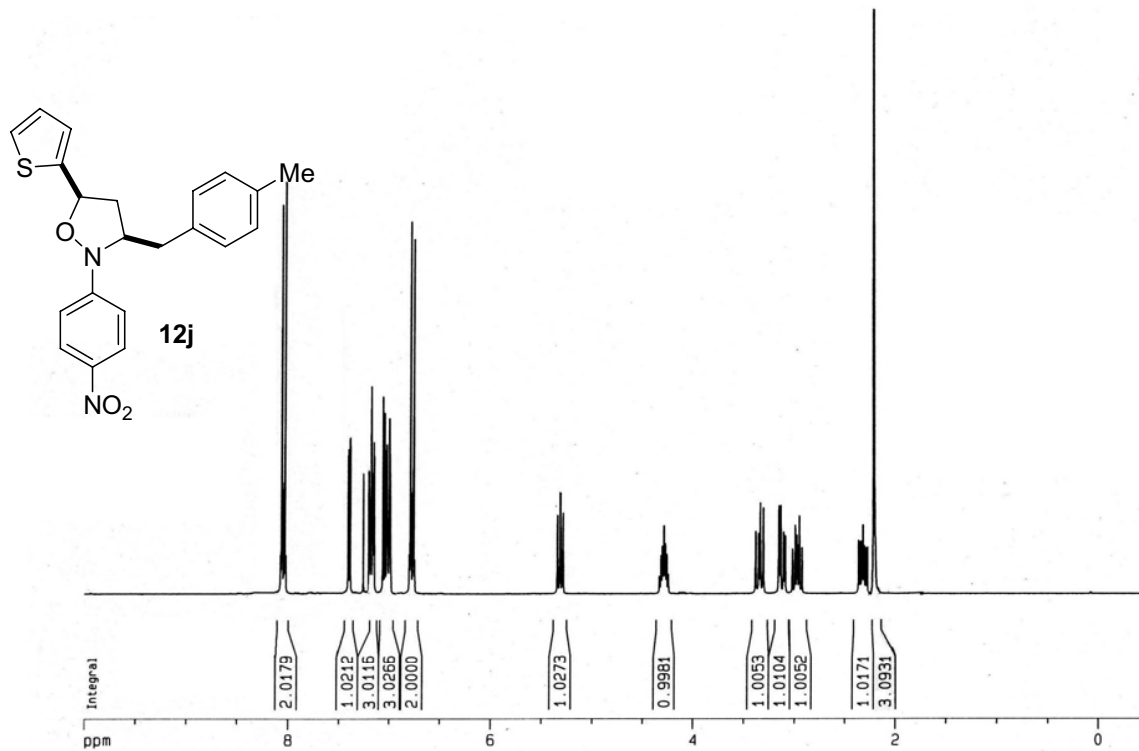
Supplementary Material (ESI) for Organic & Biomolecular Chemistry  
This journal is (c) The Royal Society of Chemistry 2007

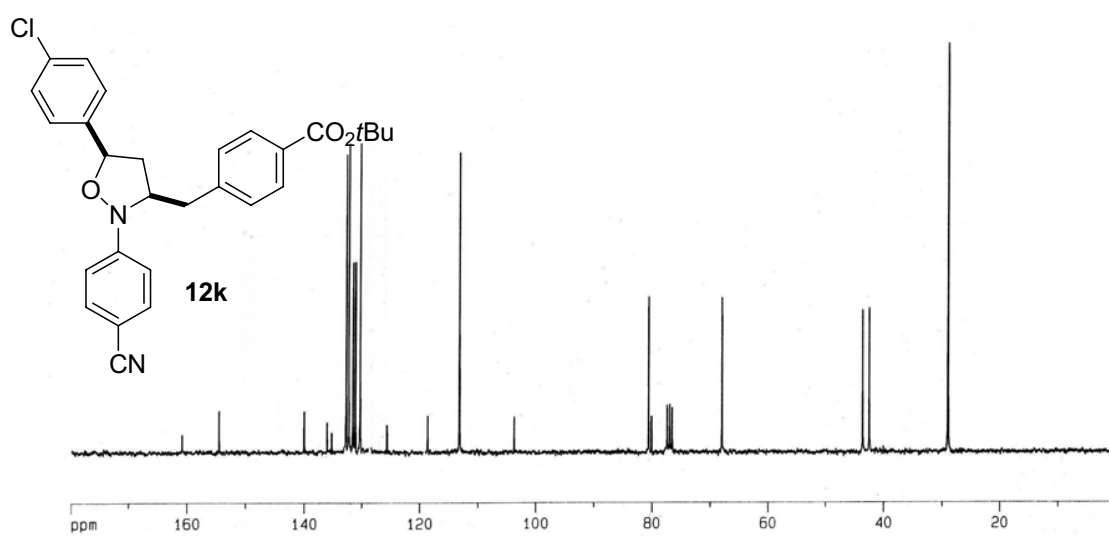
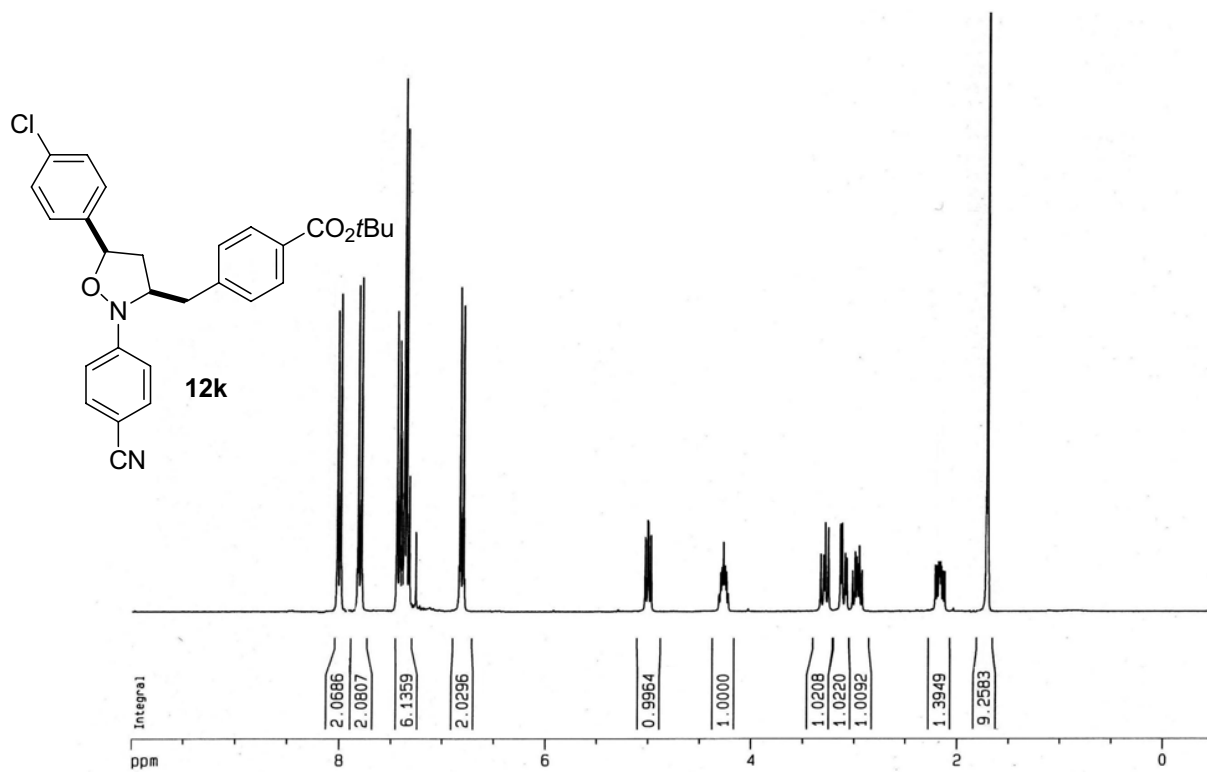


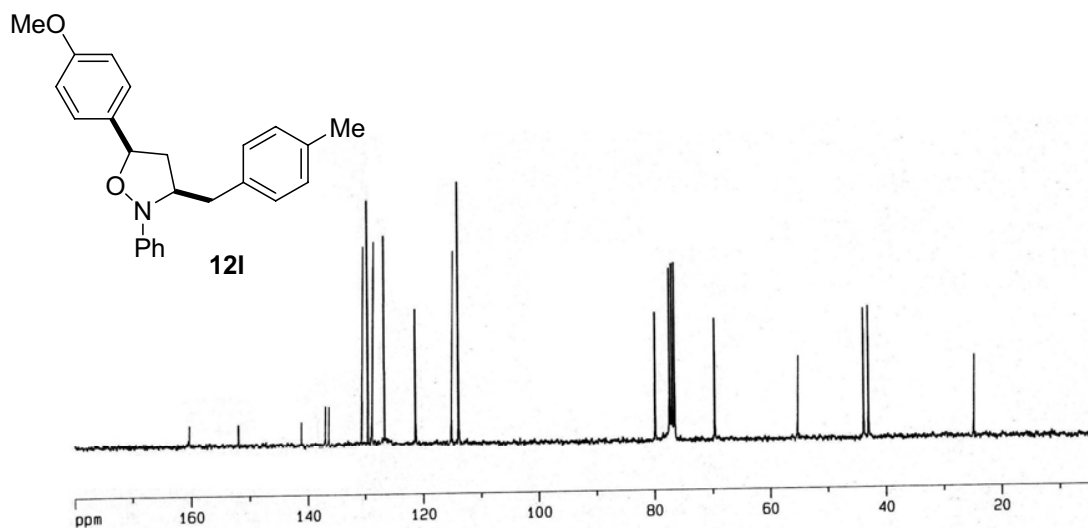
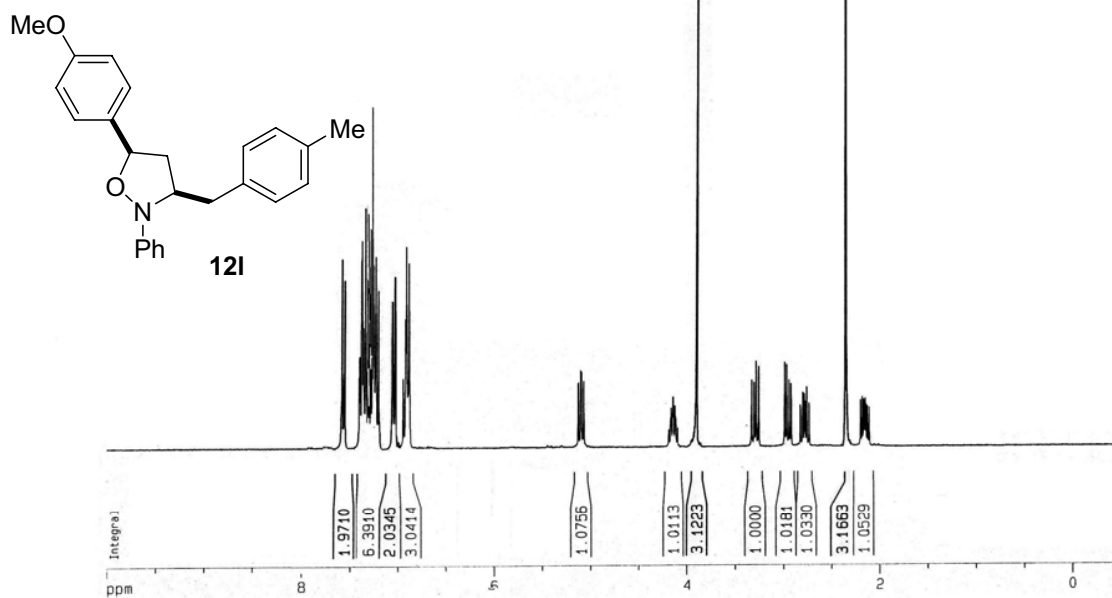


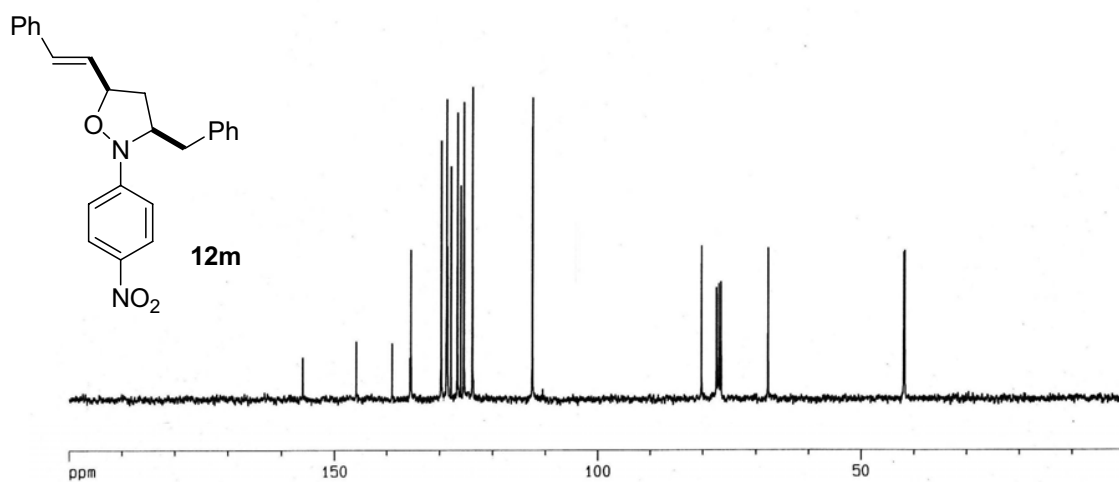
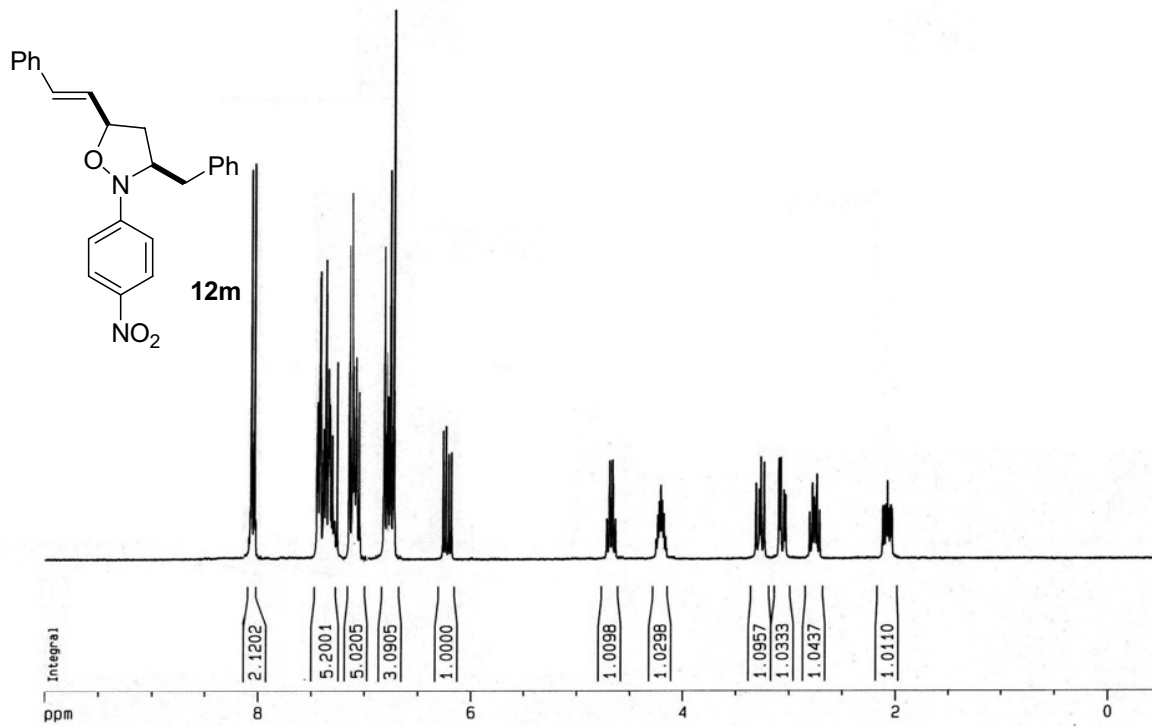




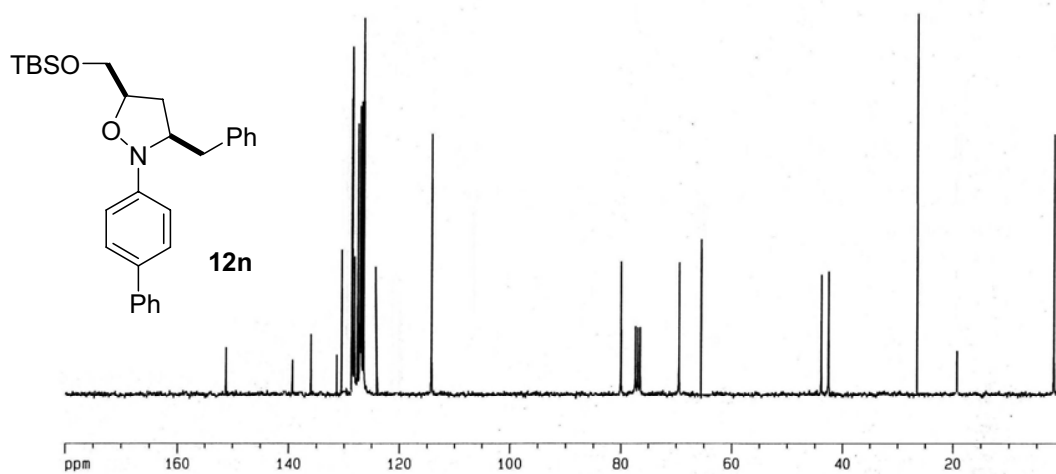
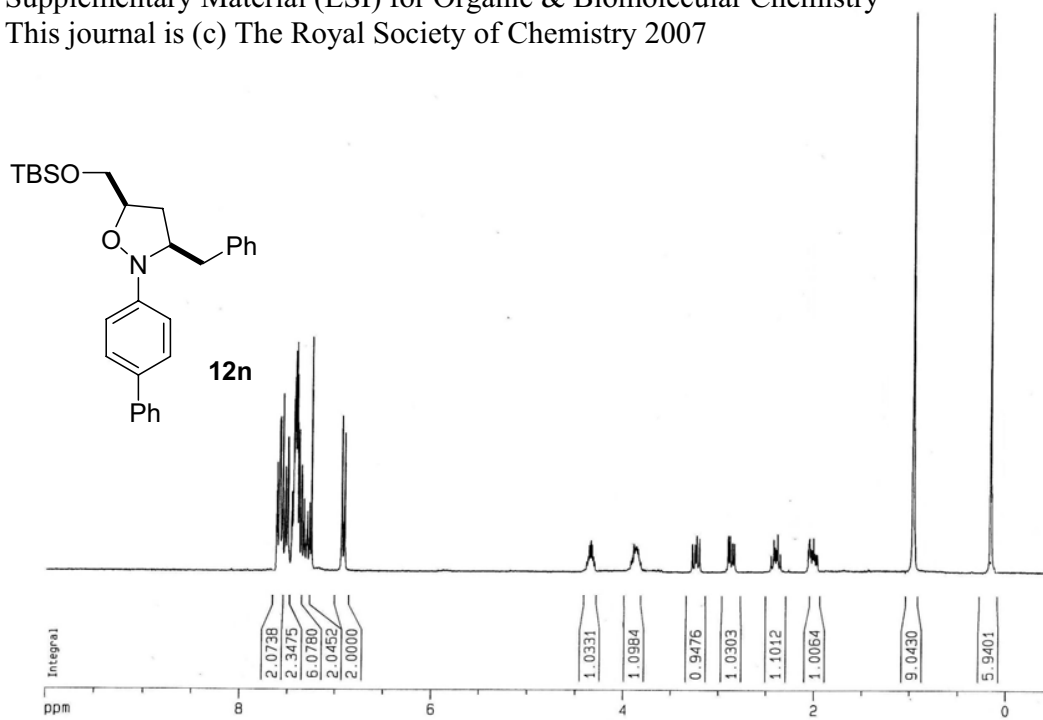


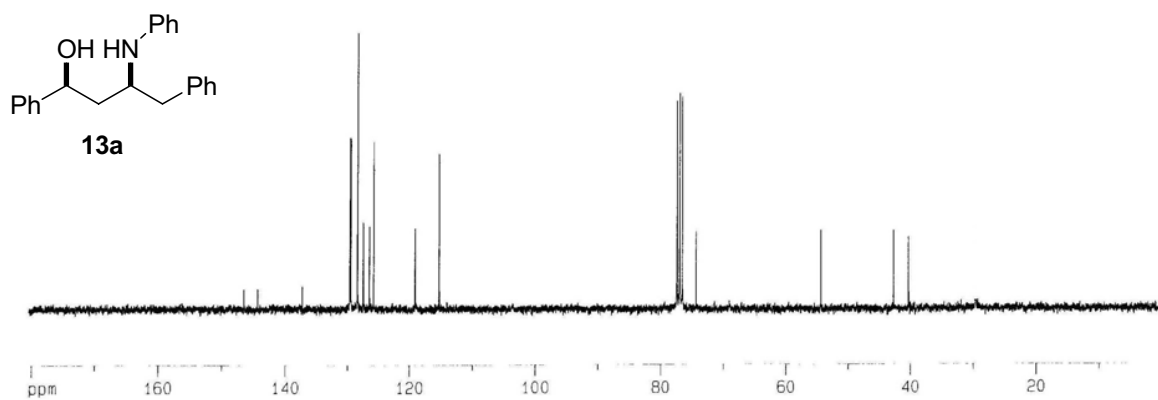
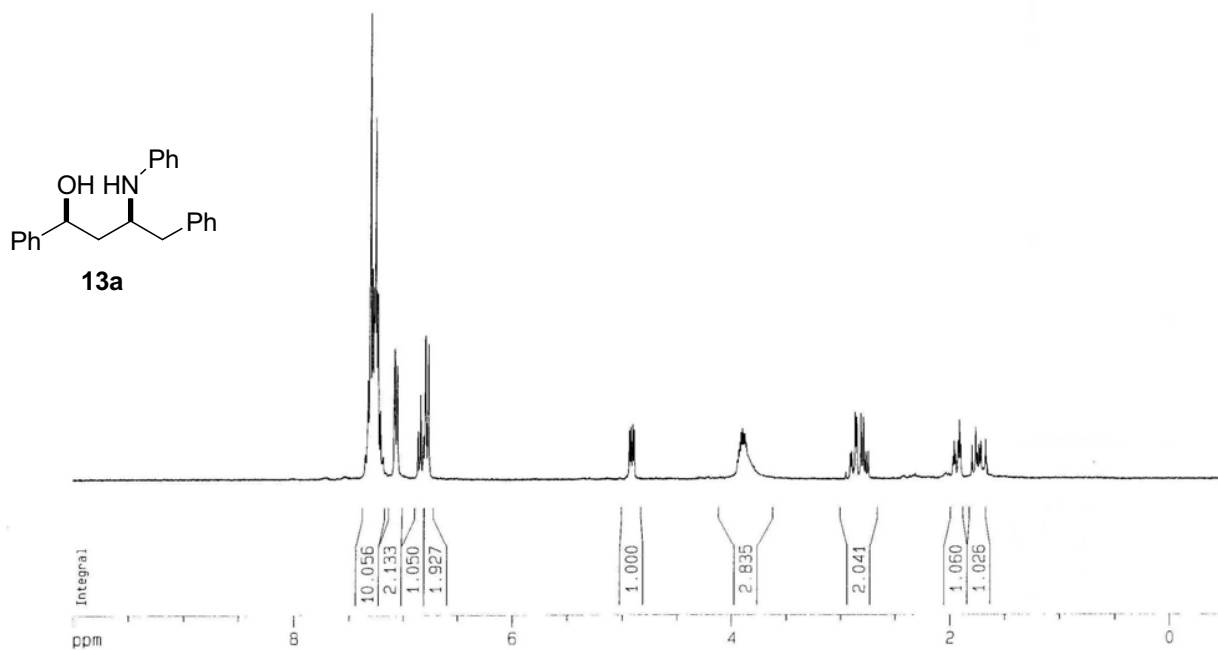






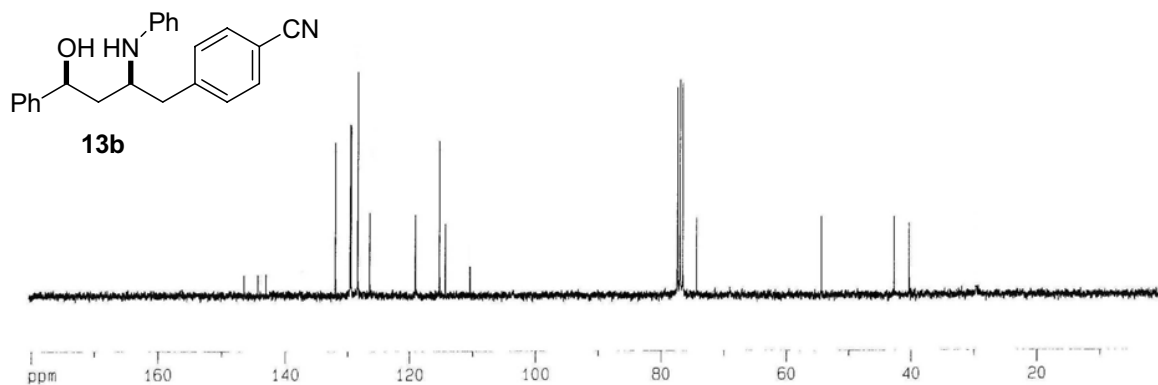
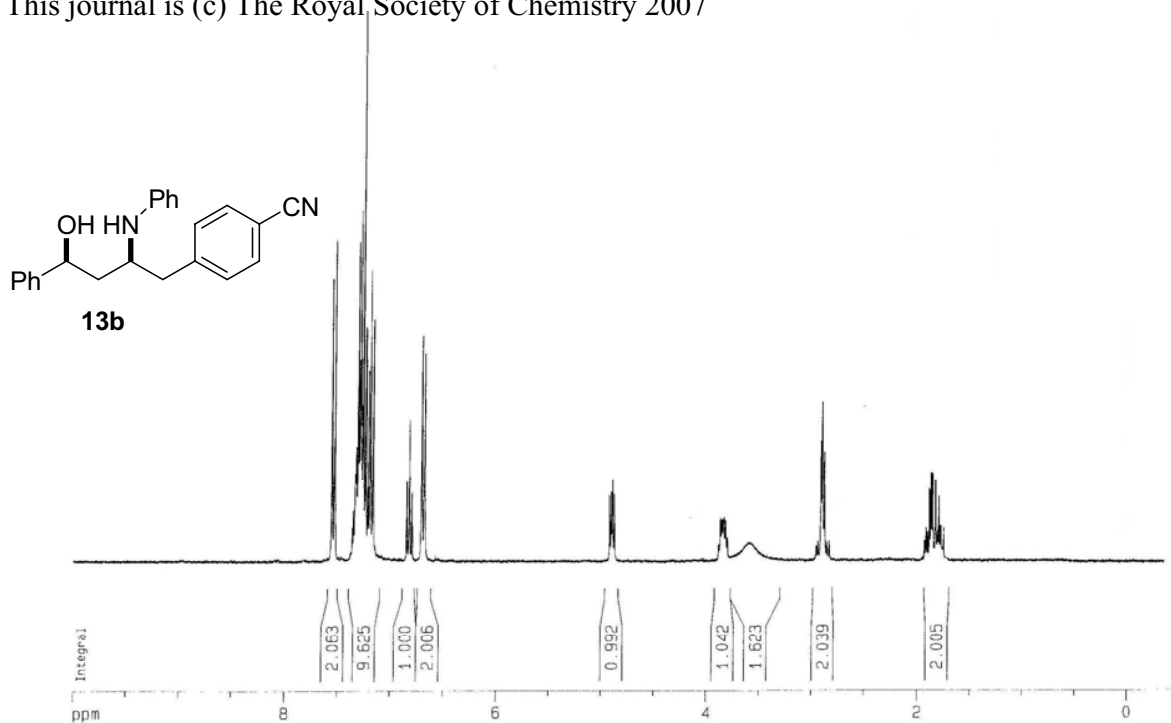
Supplementary Material (ESI) for Organic & Biomolecular Chemistry  
This journal is (c) The Royal Society of Chemistry 2007

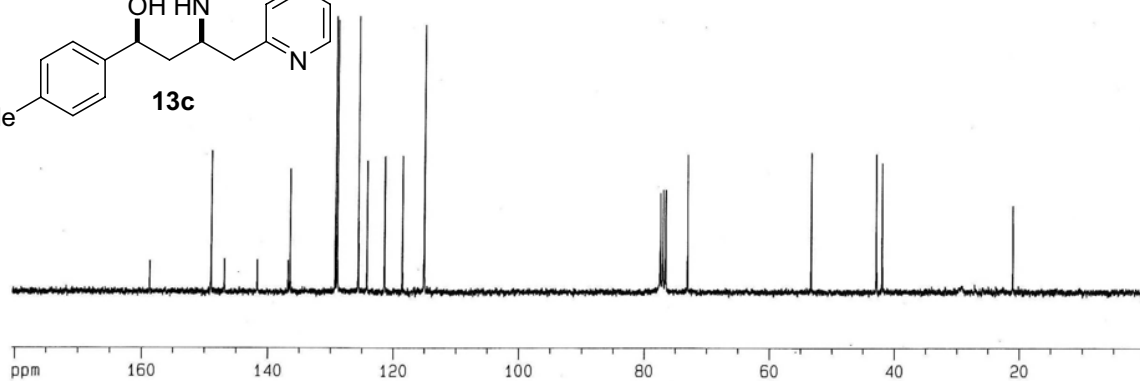
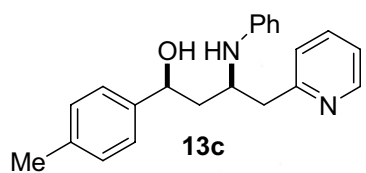
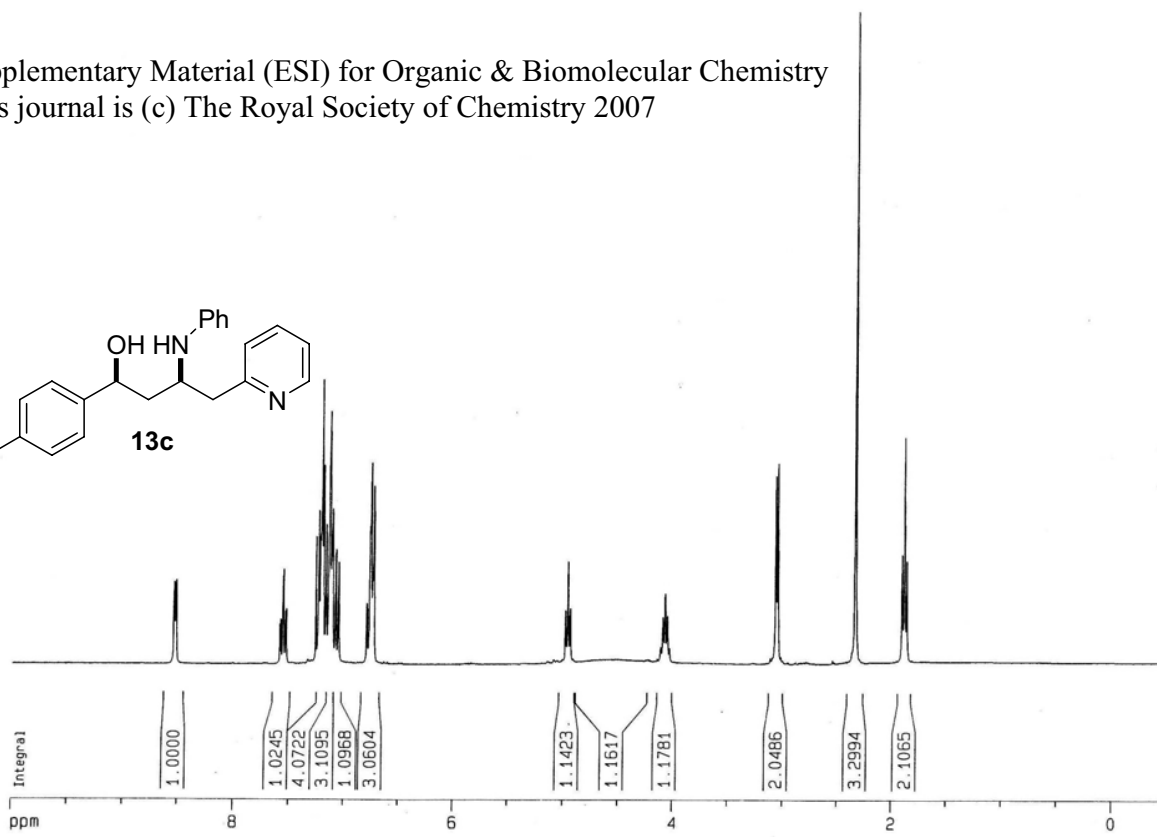
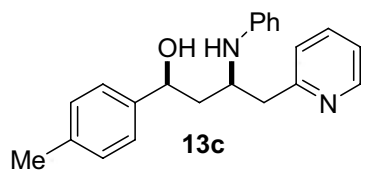


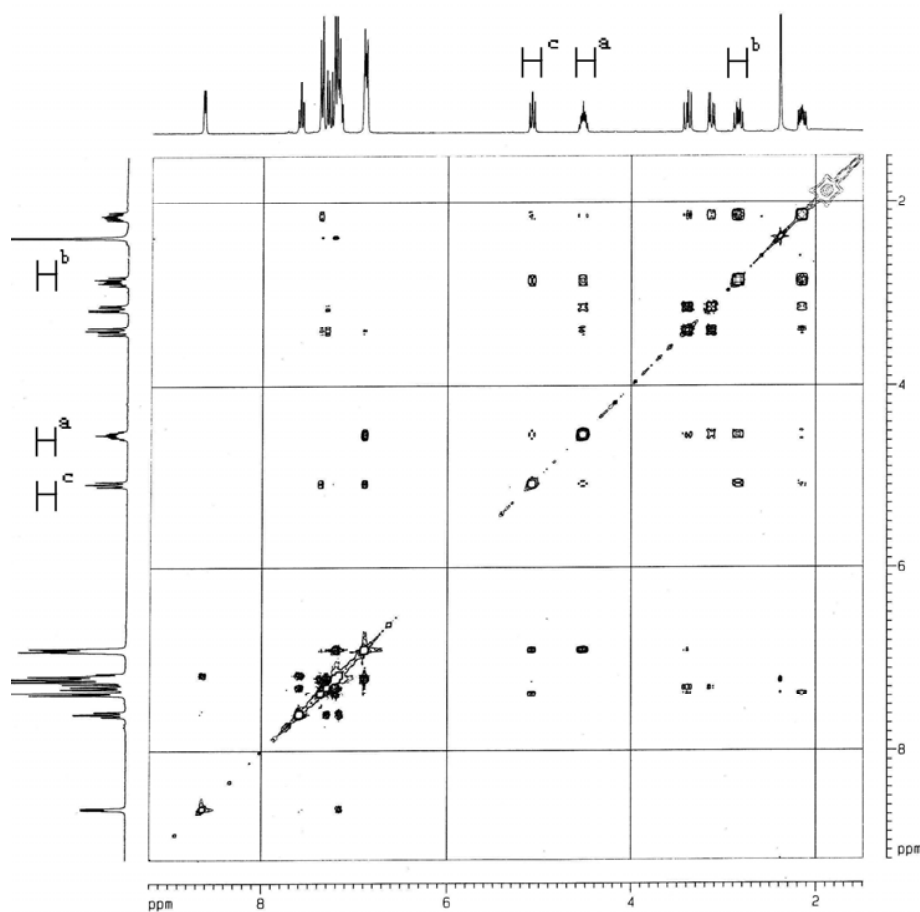
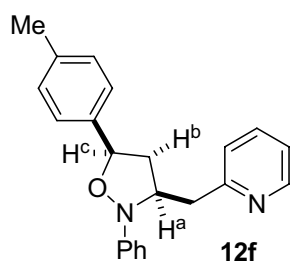




Supplementary Material (ESI) for Organic & Biomolecular Chemistry  
This journal is (c) The Royal Society of Chemistry 2007







P061227 NOESY

Current Data Parameters  
 NAME 1369-015-364  
 EXPNO 3  
 PROCNO 1

F2 - Acquisition Parameters  
 Date\_ 20061227  
 Time 19:17  
 INSTRUM ex300  
 PROBHD 5 mm QNP 1H/13  
 PULPROG zgpg30  
 TD 1024  
 SOLVENT CDCl3  
 NS 16  
 DS 4  
 SWH 2314.815 Hz  
 FIDRES 2.260561 Hz  
 AQ 0.2212340 sec  
 RG 32  
 DW 216.600 usec  
 DE 6.00 usec  
 TE 300.2 K  
 D0 0.0000000 sec  
 D1 2.0000000 sec  
 D8 1.0000000 sec  
 END 0.0004300 sec  
 MREST 0.0000000 sec  
 HSWH 1.0000000 sec  
 STCNT 056

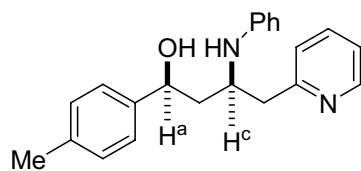
----- CHANNEL f1 -----  
 NUC1 1H  
 P1 7.80 usec  
 PL1 -2.00 dB  
 SFO1 300.136185 MHz

F1 - Acquisition parameters  
 MD 1  
 ID 512  
 SFO1 300.1316 MHz  
 FIDRES 4.521122 Hz  
 SW 7.713 ppm  
 FMODE States-1991

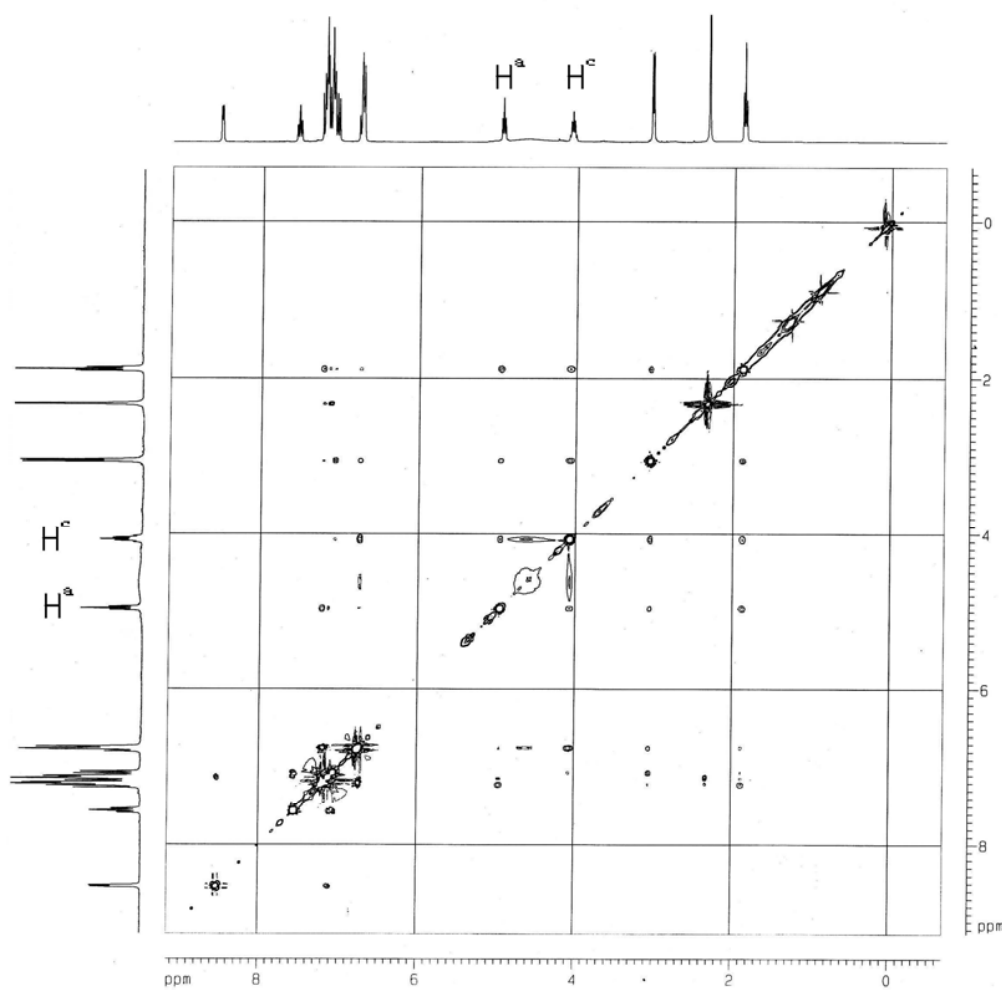
F2 - Processing parameters  
 SI 1024  
 SF 300.130120 MHz  
 MDW 951NE  
 SSB 2  
 LB 0.00 Hz  
 GB 0  
 PC 1.00

F1 - Processing parameters  
 SI 1024  
 HCF States-TYPE  
 SF 300.130120 MHz  
 MDW 951NE  
 SSB 2  
 LB 0.00 Hz  
 GB 0

2D NMR plot parameters  
 CK2 15.00 cm  
 CK1 15.00 cm  
 FOPLO 9.202 ppm  
 FZLO 2761.84 Hz  
 F1PHE 1.489 ppm  
 F2HE 447.02 Hz  
 F1PLO 9.202 ppm  
 F1LO 2761.84 Hz  
 F1PHE 1.489 ppm  
 F1HE 447.02 Hz  
 F2PNDX 0.51418 ppm/c  
 F2NDX 154.32098 Hz/c  
 F1PNDX 0.51418 ppm/c  
 F1NDX 154.32098 Hz/c



13c



P07126 NOESY

```

Current Data Parameters
NAME      1369-p1s-369
EXPNO    3
PROCNO   1

F2 - Acquisition Parameters
Date_    20070128
Time     17.27
INSTRUM  av300
PROBHD   5 mm QNP 1H/13
PULPROG  noesyph
TD        1024
SOLVENT  CDCl3
NS        32
DS        4
SWH       2955.083 Hz
FIDRES    2.885823 Hz
AQ         0.1733108 sec
RG         30
DM        169.200 usec
DE         6.00 usec
TE         300.0 K
AQ         0.0000000 sec
D1         2.0000000 sec
D8         1.0000000 sec
D9         0.0003840 sec
INRG      0.0000000 sec
MCREST    1.0000000 sec
MCMR      1.0000000 sec
STICHT    256

***** CHANNEL f1 *****
NUC1      1H
P1         7.80 usec
PL1       -2.00 dB
SFO1      300.1312827 MHz

F1 - Acquisition parameters
NUC1      13C
TD         512
SFO1      300.1301124 MHz
FIDRES    5.771646 Hz
SM         9.846 ppm
FHM0E     States-TPPI

F2 - Processing parameters
SI         1024
SF         300.1300124 MHz
WDW        GBINE
SSB         2
LB         0.00 Hz
GB         0
PC         1.00

F1 - Processing parameters
SI         1024
MC2        States-TPPI
SF         300.1300124 MHz
WDW        GBINE
SSB         2
LB         0.00 Hz
GB         0

2D NMR plot parameters
CK2        15.00 cm
CX1        15.00 cm
F2PL0      9.150 ppm
F2L0       2747.80 Hz
F2PH0      -0.691 ppm
F2PH1      -207.28 Hz
F1PL0      9.150 ppm
F1L0       2747.80 Hz
F1PH0      -0.691 ppm
F1PH1      -207.28 Hz
F2PRMCM    0.65640 ppm/cm
F2PRMCH    197.00551 Hz/cm
F1PRMCM    0.65640 ppm/cm
F1PRMCH    197.00551 Hz/cm
    
```