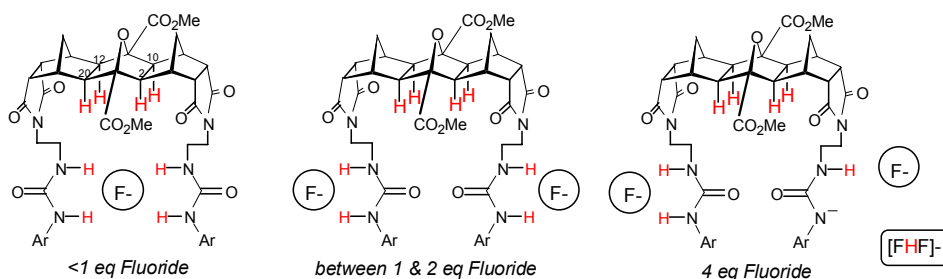


Supplementary Information

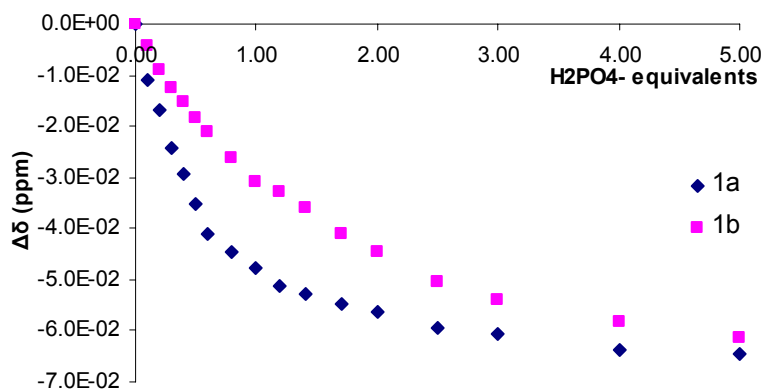
Anion recognition and anion mediated self assembly with thiourea functionalised fused [3]polynorbornyl frameworks

Frederick M Pfeffer, Paul E. Kruger and Thorfinnur Gunnlaugsson

Fluoride:Host interactions during titration



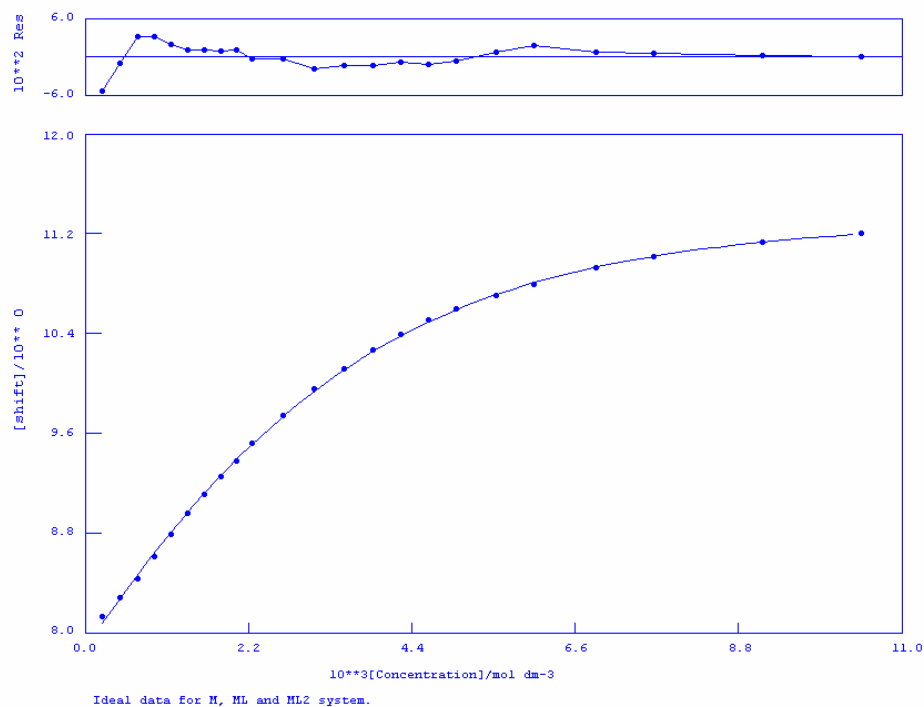
Titration curve for dihydrogen phosphate (monitoring the 'cleft' C-H resonances)



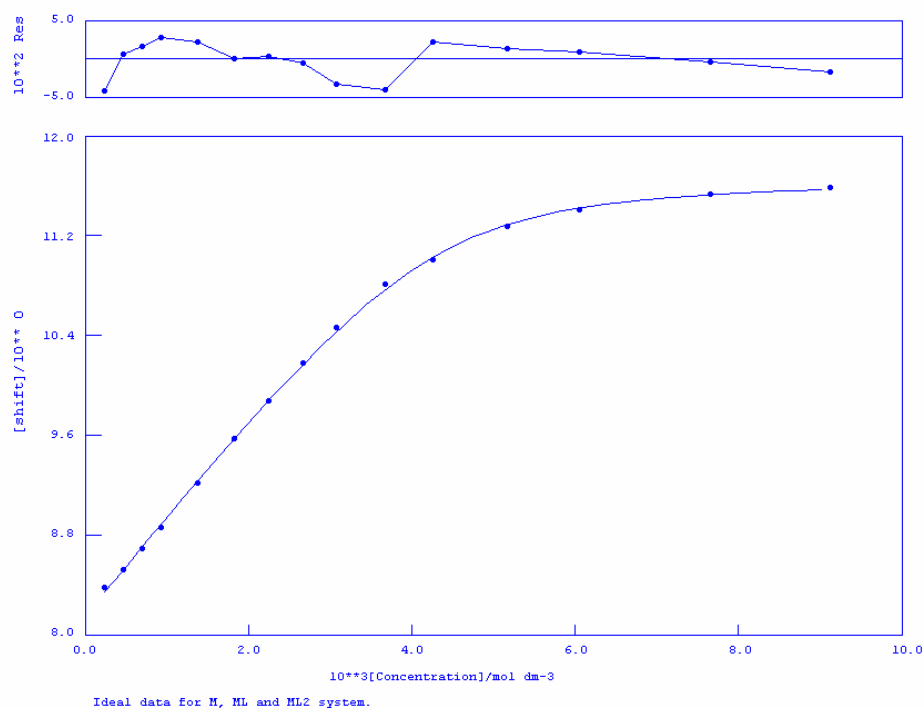
Fit Plots

points are experimentally determined, line is theoretical fit for 1:2 host:guest model using WinEQNMR¹

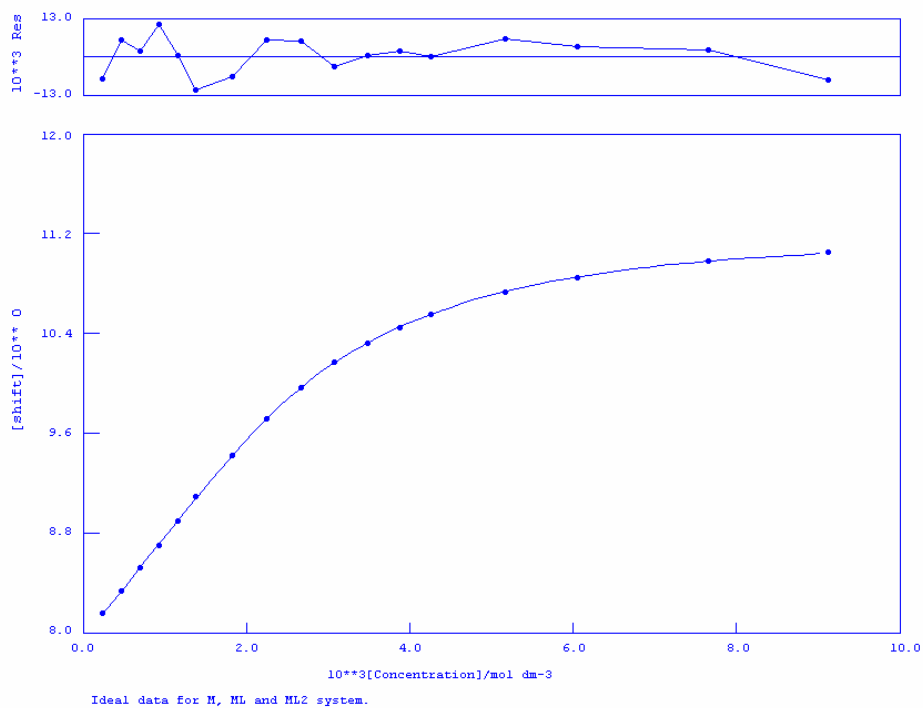
1a against Acetate 1:2 model



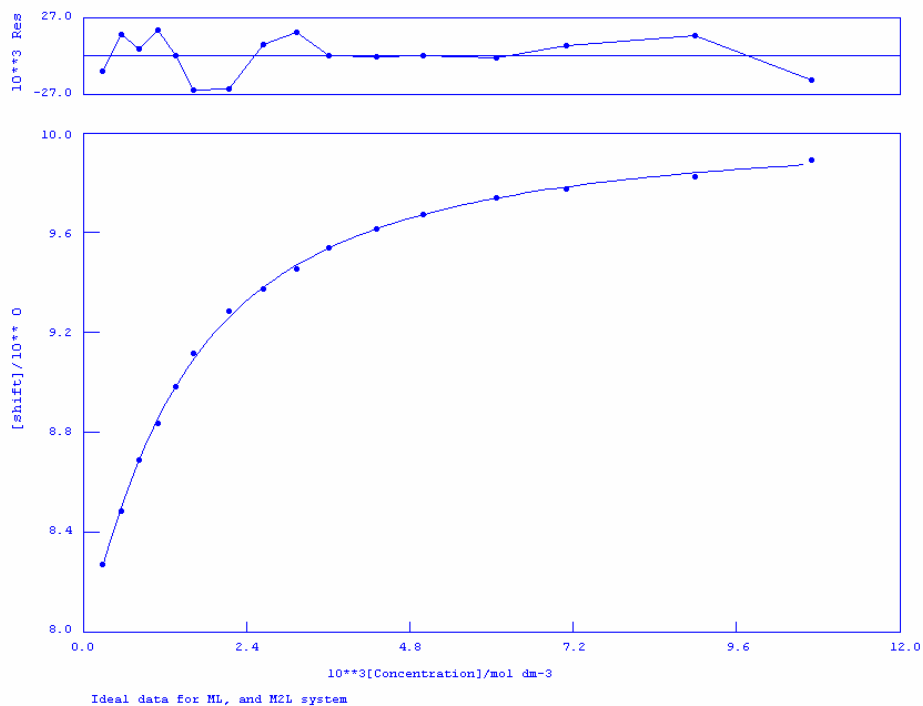
1b against Acetate 1:2 model



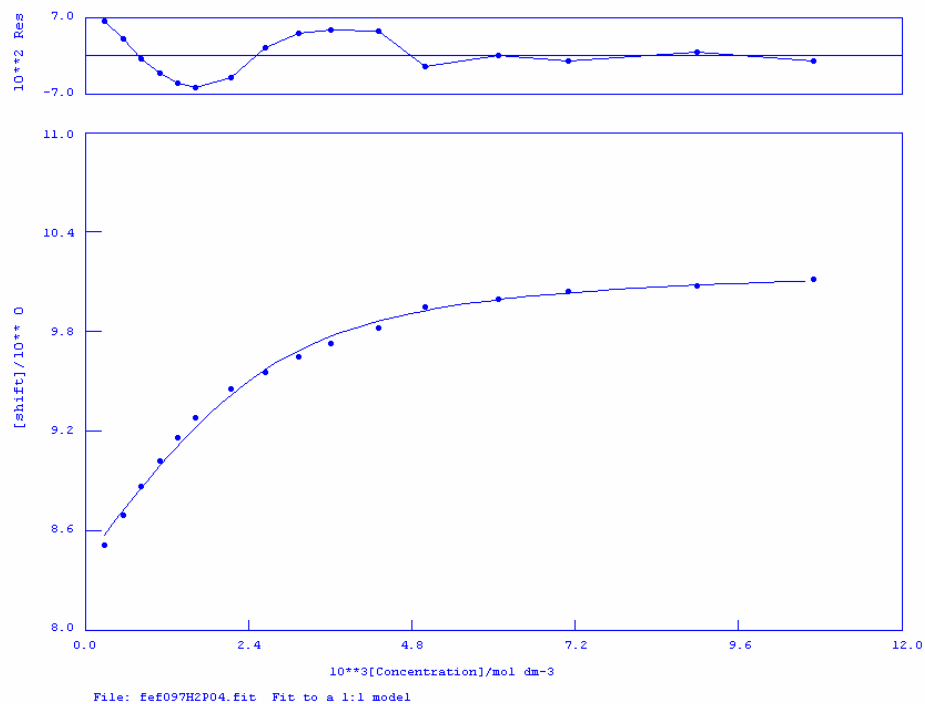
2 against Acetate 1:2 model



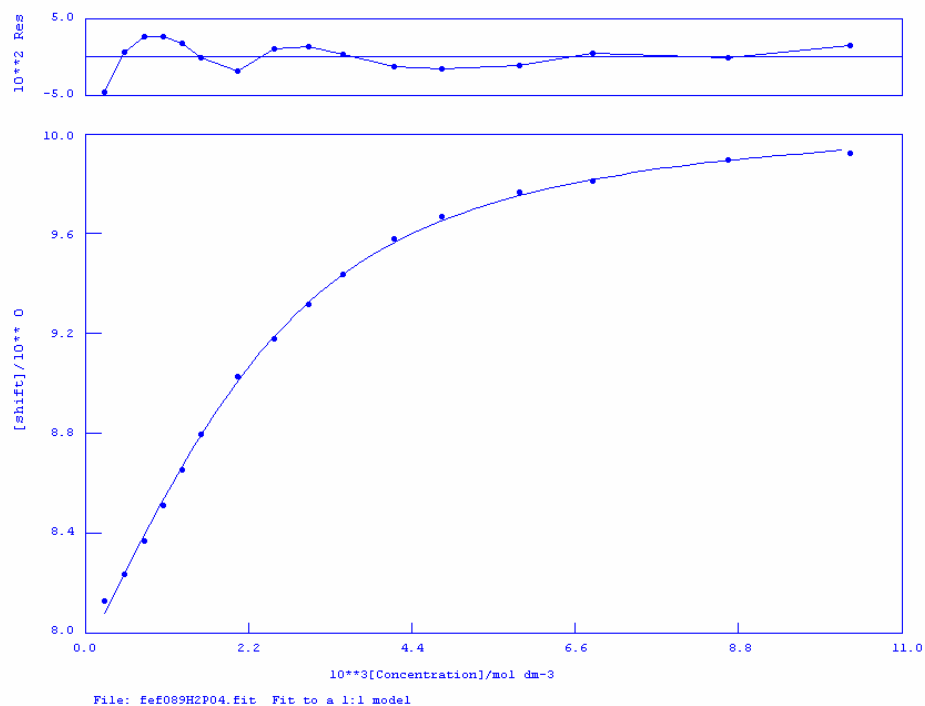
1a against H_2PO_4^- 1:1 model



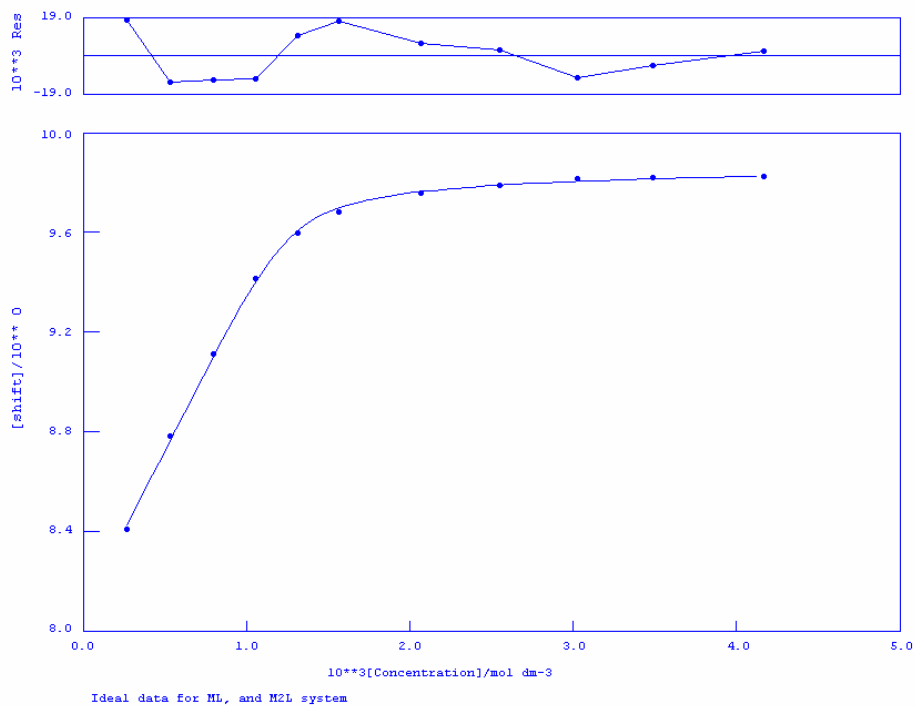
1b against H_2PO_4^- 1:1 model



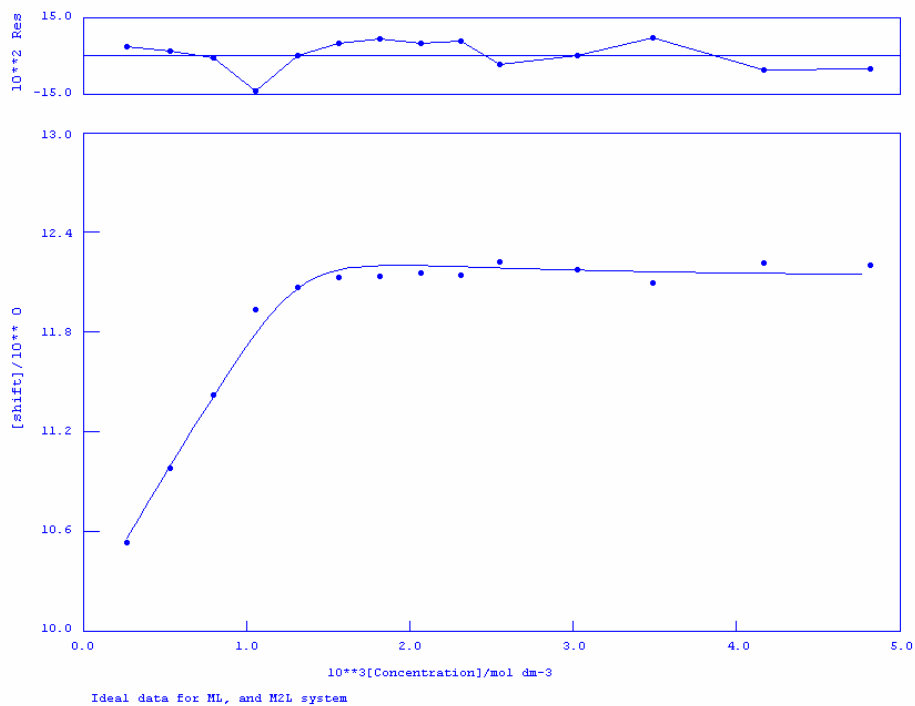
2 against H_2PO_4^- 1:1 model



1a against dihydrogenpyrophosphate 2:1 model



1b against dihydrogenpyrophosphate 2:1 model



1. M. Hynes, *J. Chem. Soc. Dalton Trans.*, **1993**, 311.