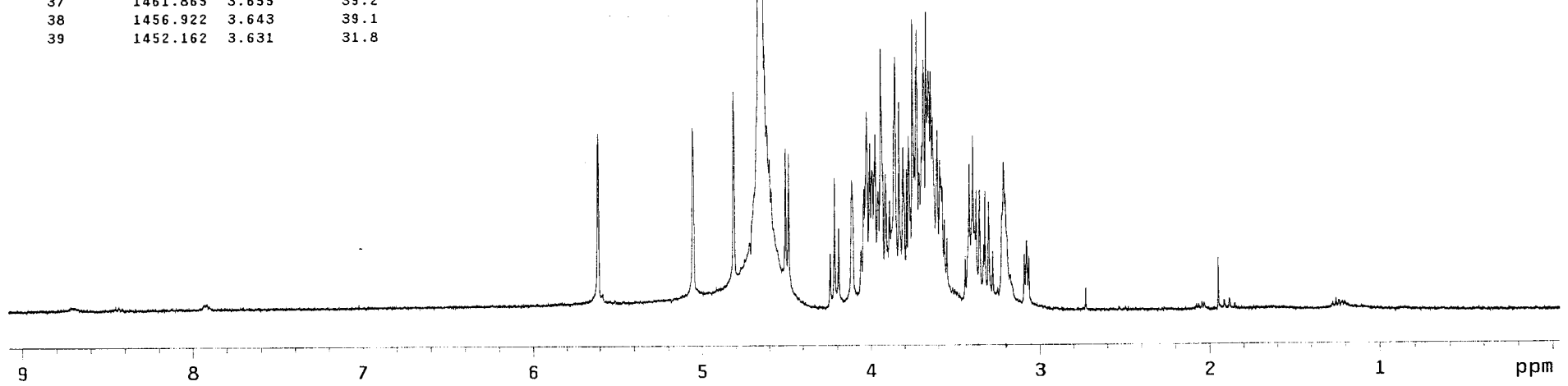
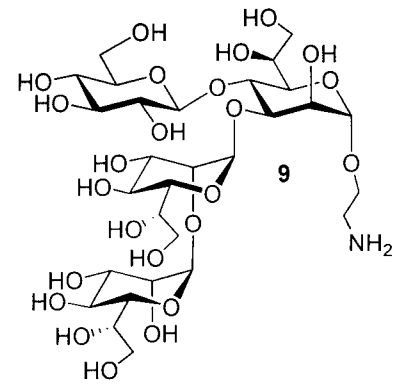


400 MHz
6/7-05
30°C

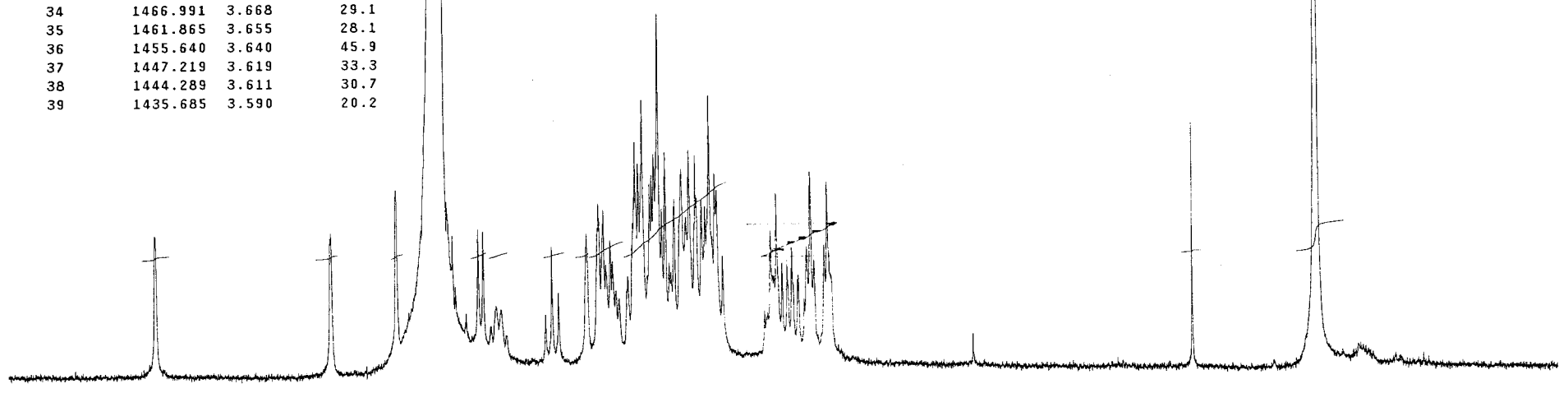
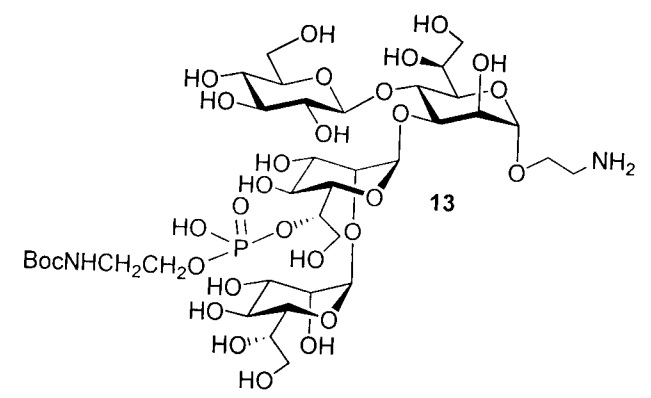
INDEX	FREQUENCY	PPM	HEIGHT	INDEX	FREQUENCY	PPM	HEIGHT
1	2243.776	5.610	29.4	40	1441.360	3.604	29.8
2	2020.608	5.052	30.3	41	1435.502	3.589	24.9
3	1923.944	4.811	36.0	42	1432.939	3.583	22.3
4	1858.221	4.646	3003.3	43	1429.277	3.574	20.7
5	1849.799	4.625	43.3	44	1365.201	3.414	24.2
6	1844.856	4.613	30.7	45	1356.231	3.391	28.9
7	1838.266	4.596	25.1	46	1348.358	3.371	20.1
8	1833.872	4.585	20.4	47	1340.669	3.352	20.1
9	1799.820	4.500	26.9	48	1283.550	3.209	24.6
10	1792.314	4.481	26.1				
11	1685.032	4.213	22.1				
12	1644.390	4.112	21.8				
13	1615.830	4.040	20.2				
14	1609.240	4.024	32.7				
15	1601.733	4.005	27.7				
16	1596.607	3.992	23.4				
17	1589.284	3.974	29.1				
18	1576.103	3.941	42.9				
19	1572.991	3.933	28.5				
20	1571.343	3.929	23.2				
21	1565.119	3.913	22.7				
22	1544.980	3.863	31.2				
23	1541.685	3.855	41.5				
24	1532.714	3.832	34.3				
25	1522.828	3.808	27.0				
26	1514.407	3.787	23.5				
27	1510.379	3.777	28.8				
28	1500.859	3.753	47.5				
29	1495.733	3.740	25.7				
30	1492.072	3.731	39.7				
31	1489.875	3.725	45.9				
32	1485.115	3.713	23.0				
33	1478.707	3.697	27.2				
34	1474.314	3.686	41.0				
35	1467.906	3.670	48.8				
36	1464.061	3.661	34.9				
37	1461.865	3.655	39.2				
38	1456.922	3.643	39.1				
39	1452.162	3.631	31.8				



1.00 0.90 0.71 17.55 1.49
1.02 0.83 0.69 2.97 0.49

2017-05
30°C
400 MHz

INDEX	FREQUENCY PPM	HEIGHT	INDEX	FREQUENCY PPM	HEIGHT		
1	2279.292	5.699	23.9	40	1363.737	3.410	24.3
2	2017.679	5.045	24.2	41	1354.766	3.387	30.4
3	1920.283	4.801	31.0	42	1331.699	3.330	21.5
4	1883.302	4.709	24.6	43	1309.364	3.274	21.7
5	1858.038	4.646	6914.1	44	1304.237	3.261	33.6
6	1846.138	4.616	29.0	45	1284.099	3.211	21.9
7	1838.083	4.596	23.7	46	1279.522	3.199	31.8
8	1800.369	4.502	24.7	47	737.439	1.844	40.8
9	1792.863	4.483	24.3	48	552.717	1.382	266.5
10	1690.525	4.227	21.9				
11	1637.982	4.096	23.9				
12	1620.590	4.052	28.7				
13	1618.942	4.048	26.3				
14	1612.901	4.033	27.6				
15	1603.015	4.008	22.7				
16	1571.160	3.929	22.1				
17	1568.048	3.921	29.6				
18	1566.217	3.916	38.3				
19	1561.640	3.905	34.9				
20	1555.233	3.889	45.2				
21	1544.797	3.863	31.7				
22	1541.685	3.855	33.1				
23	1538.390	3.847	36.4				
24	1535.094	3.838	36.8				
25	1532.165	3.831	58.9				
26	1526.856	3.818	27.7				
27	1521.181	3.804	36.7				
28	1507.999	3.771	29.3				
29	1497.198	3.744	34.0				
30	1490.607	3.727	26.4				
31	1486.030	3.716	37.0				
32	1476.327	3.691	36.2				
33	1474.497	3.687	29.5				
34	1466.991	3.668	29.1				
35	1461.865	3.655	28.1				
36	1455.640	3.640	45.9				
37	1447.219	3.619	33.3				
38	1444.289	3.611	30.7				
39	1435.685	3.590	20.2				



6.0 5.5 5.0 4.5 4.0 3.5 3.0 2.5 2.0 1.5 1.0 ppm

1.00 0.94 1.17 1.32 1.40 1.00 1.22 3.79 18.32 7.90 0.56 7.41