

A Cyclic RGD-coated Peptide Nanoribbon as a Selective Intracellular Nanocarrier

Yong-beom Lim,^a Oh-Joon Kwon,^b Eunji Lee,^a Pyung-Hwan Kim,^b Chae-Ok Yun^b and
Myongsoo Lee,^{*a}

^a Centre for Supramolecular Nano-Assembly, Department of Chemistry, Yonsei University, Shinchon 134, Seoul 120-749, Korea. Fax: 82 2 393 6096; Tel: 82 2 2123 2647; E-mail: mslee@yonsei.ac.kr

^b Brain Korea 21 Project for Medical Science, Institute for Cancer Research, Yonsei Cancer Centre, Yonsei University College of Medicine, Seoul, Korea.

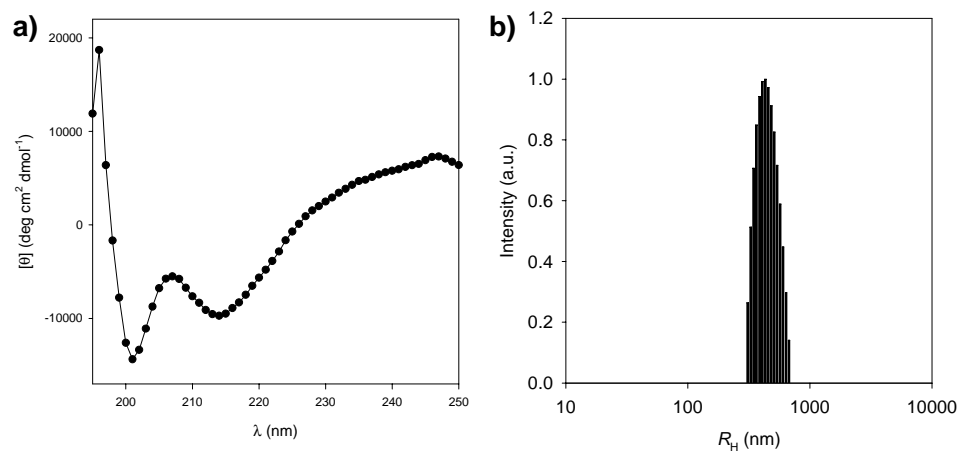


Figure S1. a) CD and b) DLS spectra of cRGD-FKFE and TAMRA-FKE coassembled at 200:1 molar ratio in PBS.

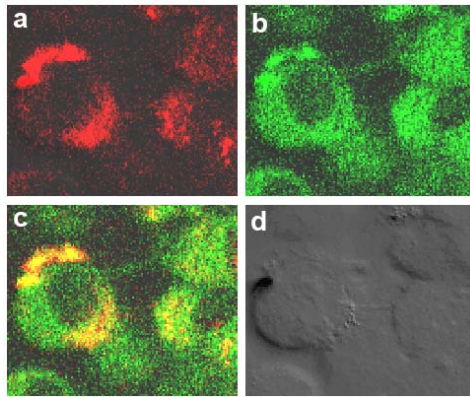


Figure S2. CLSM image. Endocytic cell entry of cRGD-FKFE. a) Red fluorescence from coassembled cRGD-FKE/TAMRA-FKE β -ribbon. b) Green fluorescence from LysoTracker Green DND-26. c) Overlay of a) and b). d) A bright field image.