

## Supplementary Data

### Solid Phase Synthesis of Cyclic Peptide Chitinase Inhibitors:

#### SAR of the argifin scaffold

Mark J. Dixon,<sup>a</sup> Amit Nathubhai,<sup>a</sup> Ole A. Andersen,<sup>b</sup> Daan M. F. van  
Aalten<sup>b</sup> and Ian M. Eggleston<sup>a\*</sup>

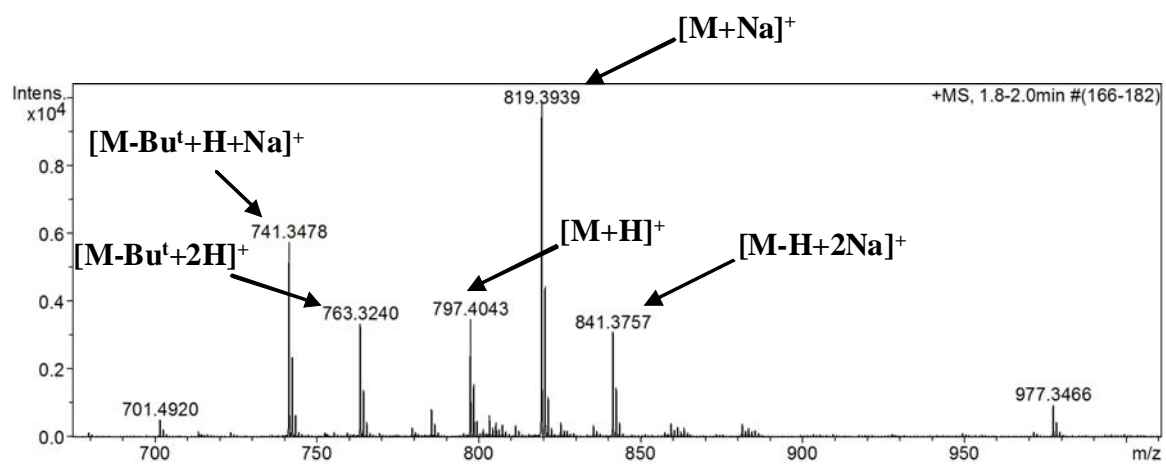
<sup>a</sup>Wolfson Laboratory of Medicinal Chemistry, Department of Pharmacy and  
Pharmacology, University of Bath, Claverton Down, Bath BA2 7AY

<sup>b</sup>Division of Biological Chemistry and Drug Discovery, University of Dundee,  
Dundee DD1 5EH

- Page 2...ES MS data for **Compound 10a**
- Page 3... ES MS data for **Compound 10b**
-

## Compound 10a

calcd for  $C_{40}H_{57}N_6O_{11}$ : 797.4080; found 797.4043  $[M+H]^+$ .



## Compound 10b

calcd for  $C_{36}H_{49}N_6O_{11}$ : 741.3459; found: 741.3495  $[M+H]^+$

## Aspartimide by-product

calcd for  $C_{36}H_{47}N_6O_{10}$ : 723.3348; found: 723.3332  $[M+H]^+$

