

SUPPLEMENTARY INFORMATION

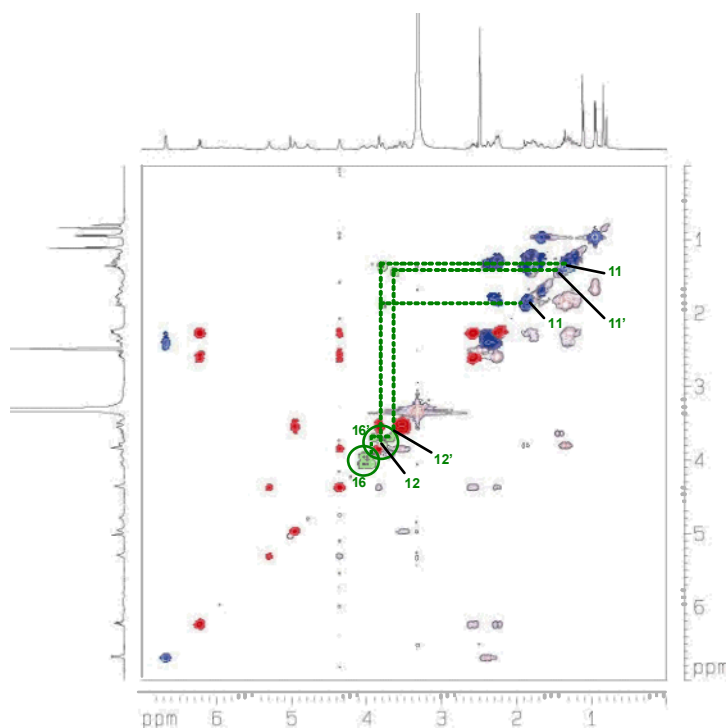


Figure 1S. COSY spectrum of CLdA adduct. Correlation peaks relative to the  $^{15}\text{NdA}$  portion are red coloured, signals relative to the CL portion are blue coloured; correlation diagnostic new signals are highlighted in green: these are splitted in two sets of signals (see explanation in the main text): 16 and 16', 12 and 12', 11 and 11'.

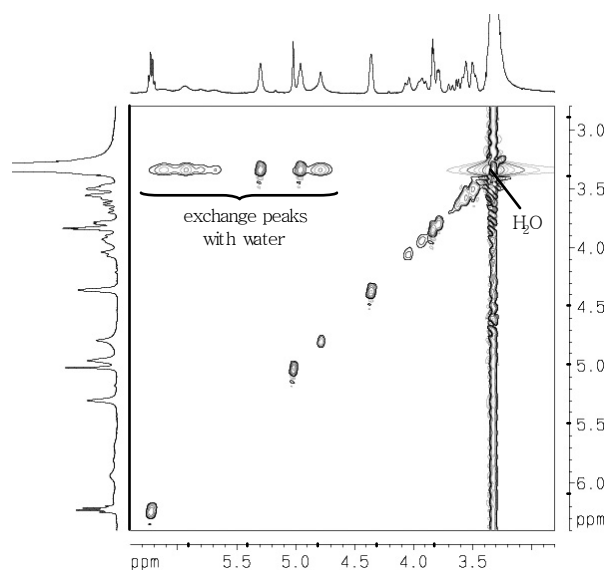


Figure 2S. Relevant region of the NOESY spectrum of CLdA adduct. Exchange peaks between water protons and OH- derived broad signals of the adduct are highlighted (see explanation in the main text).