

Supporting Information

Synthesis of the Terminally Modified Oligonucleotides and Their Hybridization Dependent on the Size of the Target RNAs

Kohji Seio*, Yusuke Takaku, Kazuya Miyazaki, Yoshiaki
MasakiAkihiro Ohkubo and Mitsuo Sekine*

*Department of Life Science, Tokyo Institute of Technology 4259
Nagatsuta-cho, Midori-ku, Yokohama 226-8501, Japan*

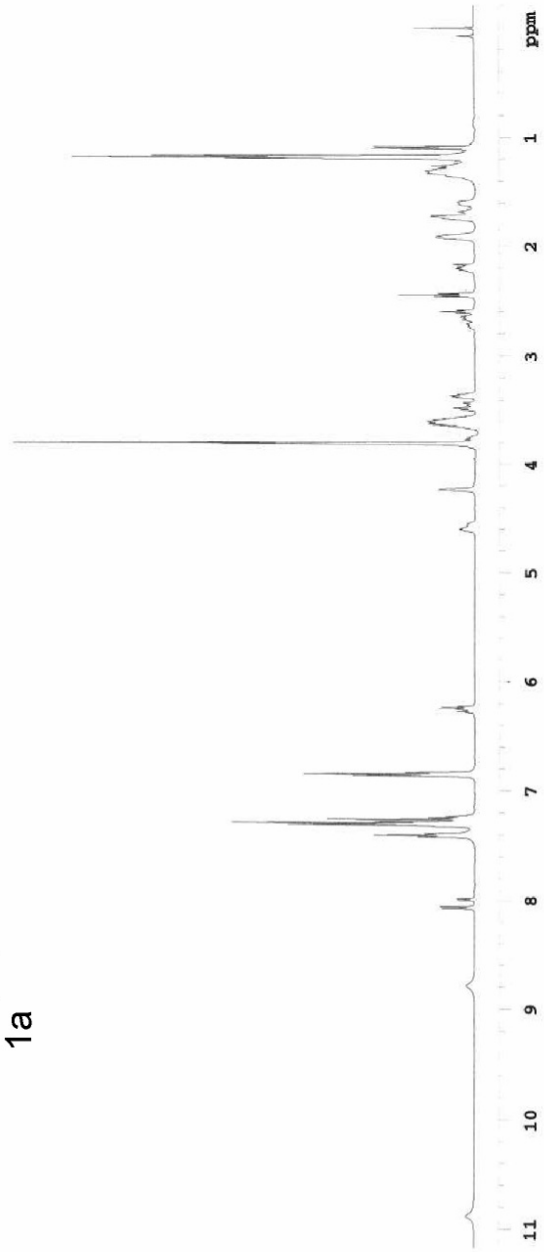
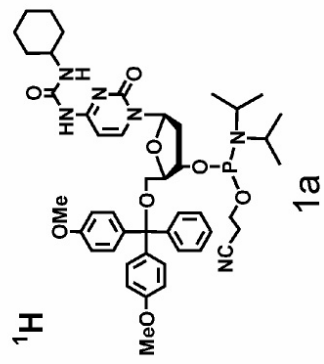
kseio@bio.titech.ac.jp

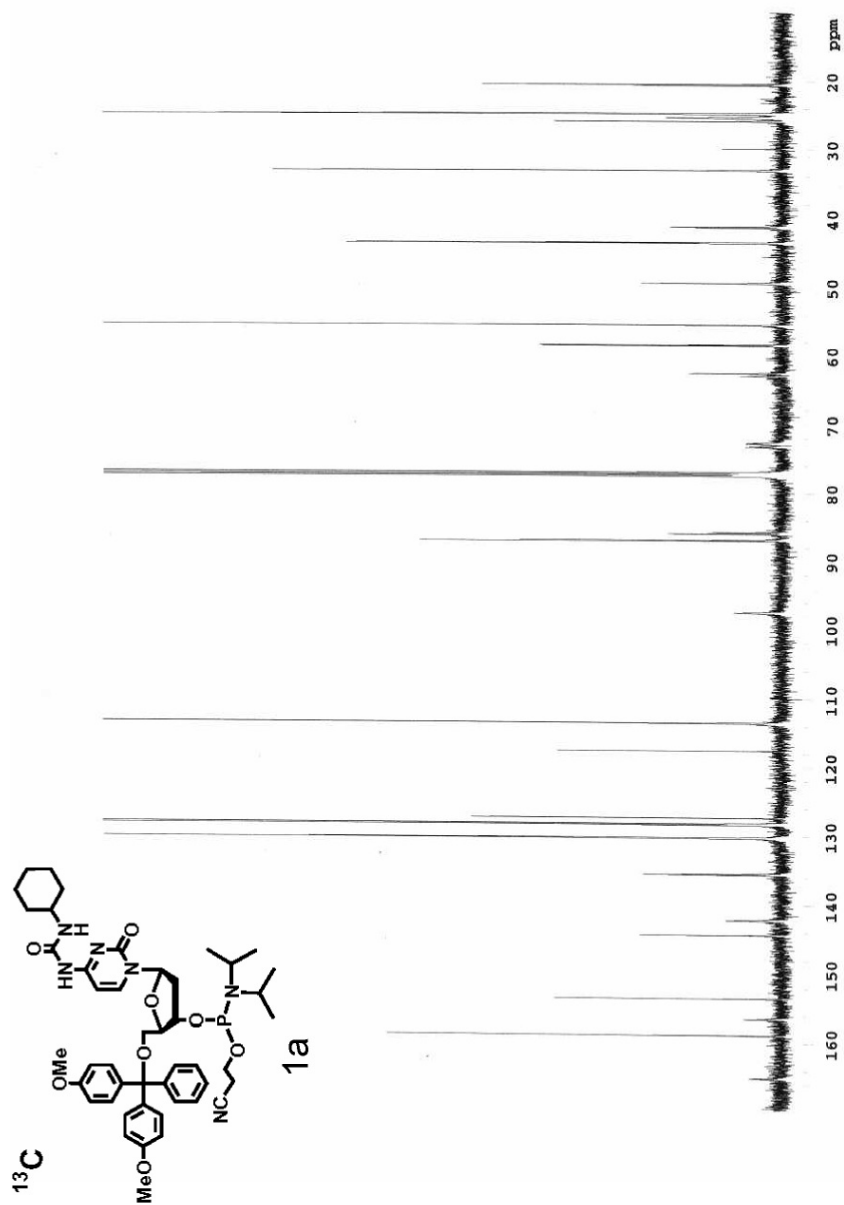
msekine@bio.titech.ac.jp

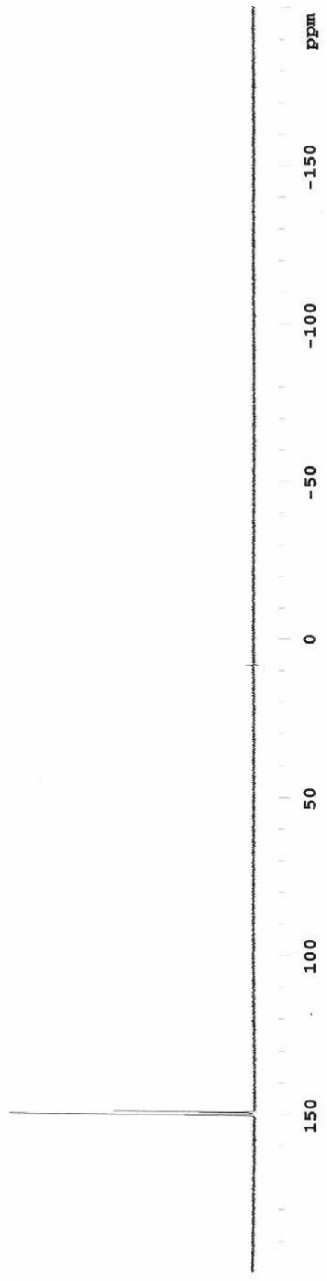
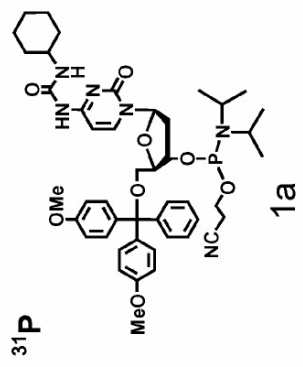
Contents

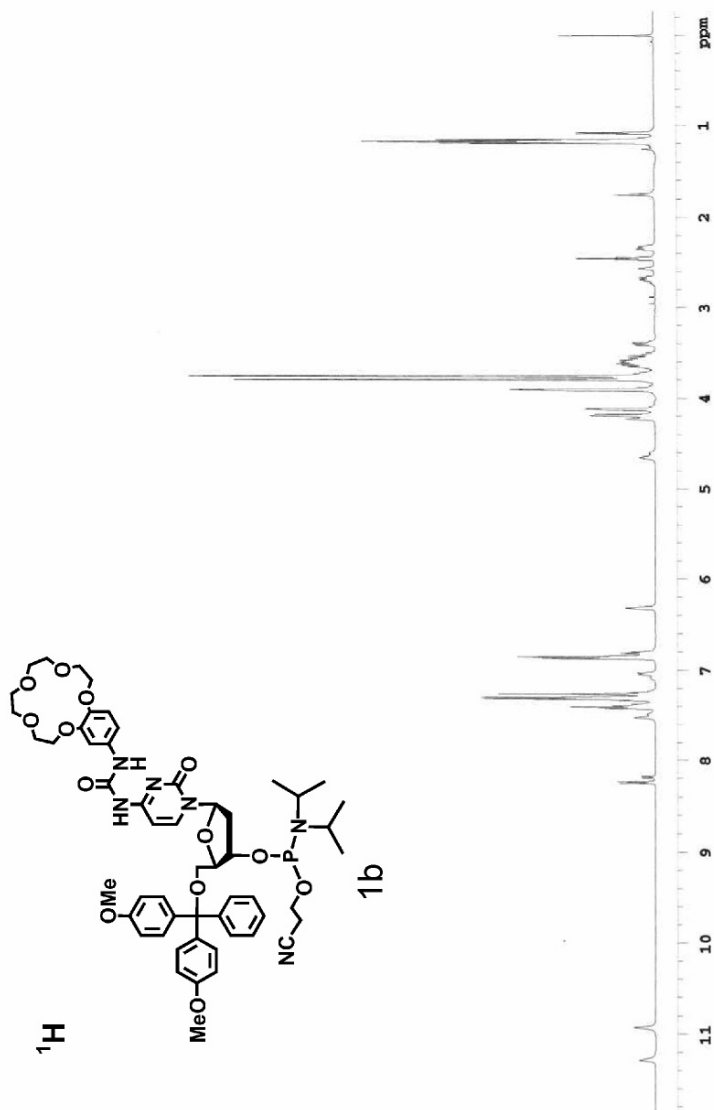
¹ H-NMR Spectrum of 1a -----	S3
¹³ C-NMR Spectrum of 1a -----	S4
³¹ P-NMR Spectrum of 1a -----	S5
¹ H-NMR Spectrum of 1b -----	S6
¹³ C-NMR Spectrum of 1b -----	S7
³¹ P-NMR Spectrum of 1b -----	S8
¹ H-NMR Spectrum of 1c -----	S9
¹³ C-NMR Spectrum of 1c -----	S10
³¹ P-NMR Spectrum of 1c -----	S11
¹ H-NMR Spectrum of 1d -----	S12
¹³ C-NMR Spectrum of 1d -----	S13
³¹ P-NMR Spectrum of 1d -----	S14
¹ H-NMR Spectrum of 1e -----	S15
¹³ C-NMR Spectrum of 1e -----	S16
³¹ P-NMR Spectrum of 1e -----	S17
¹ H-NMR Spectrum of 1f -----	S18
¹³ C-NMR Spectrum of 1f -----	S19
³¹ P-NMR Spectrum of 1f -----	S20
¹ H-NMR Spectrum of 2a -----	S21
¹³ C-NMR Spectrum of 2a -----	S22
¹ H-NMR Spectrum of 2b -----	S23

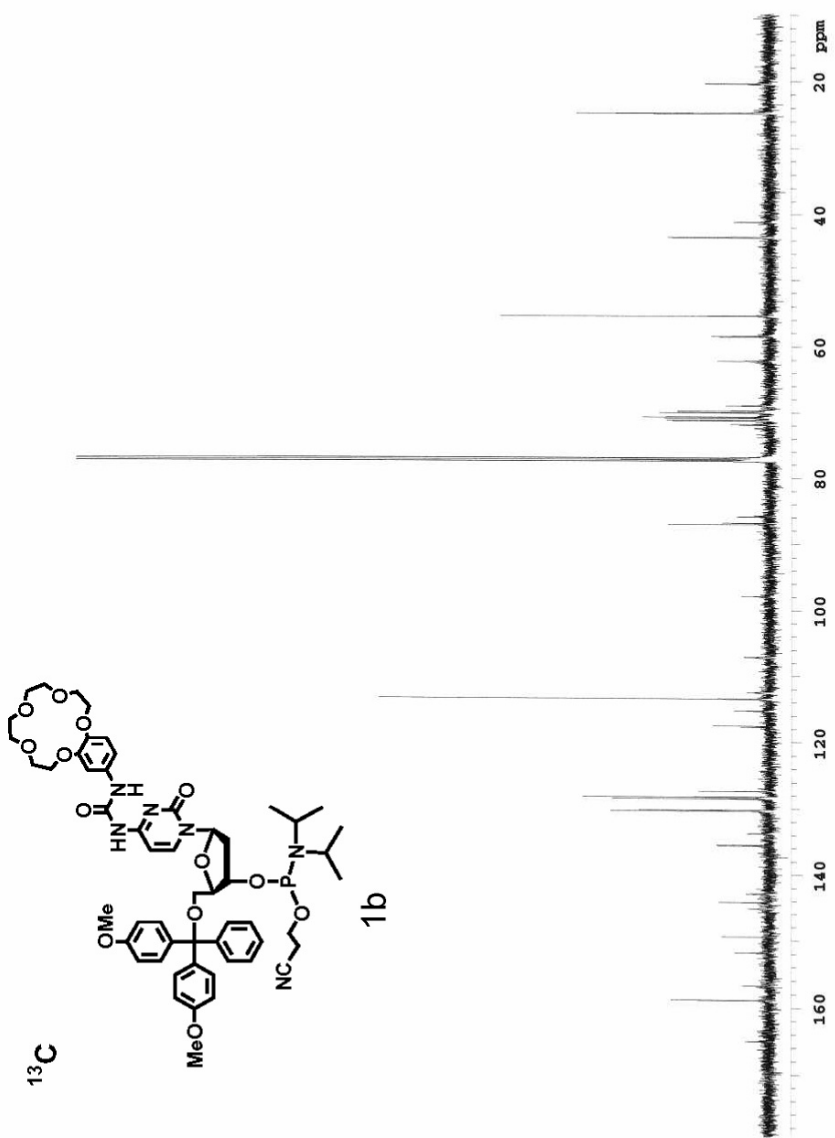
¹³ C-NMR Spectrum of 2b	-----	S24
¹ H-NMR Spectrum of 2c	-----	S25
¹³ C-NMR Spectrum of 2c	-----	S26
¹ H-NMR Spectrum of 2d	-----	S27
¹³ C-NMR Spectrum of 2d	-----	S28
¹ H-NMR Spectrum of 3a	-----	S29
¹³ C-NMR Spectrum of 3a	-----	S30
¹ H-NMR Spectrum of 3b	-----	S31
¹³ C-NMR Spectrum of 3b	-----	S32
¹ H-NMR Spectrum of 3c	-----	S33
¹³ C-NMR Spectrum of 3c	-----	S34
¹ H-NMR Spectrum of 3d	-----	S35
¹³ C-NMR Spectrum of 3d	-----	S36
¹ H-NMR Spectrum of 2e	-----	S37
¹³ C-NMR Spectrum of 2e	-----	S38
¹ H-NMR Spectrum of 3e	-----	S39
¹³ C-NMR Spectrum of 3e	-----	S40
¹ H-NMR Spectrum of 5	-----	S41
¹³ C-NMR Spectrum of 5	-----	S42
¹ H-NMR Spectrum of 6	-----	S43
¹³ C-NMR Spectrum of 6	-----	S44
¹ H-NMR Spectrum of 7	-----	S45
¹³ C-NMR Spectrum of 7	-----	S46
¹ H-NMR Spectrum of 8	-----	S47
¹³ C-NMR Spectrum of 8	-----	S48
Fig. S1 Atom types and atom charges of the modified base	-----	S49
Table S1 Bond, angle and dihedral added for the modified base	-----	S49
Fig. S2 RMS deviations during the MD simulation	-----	S50

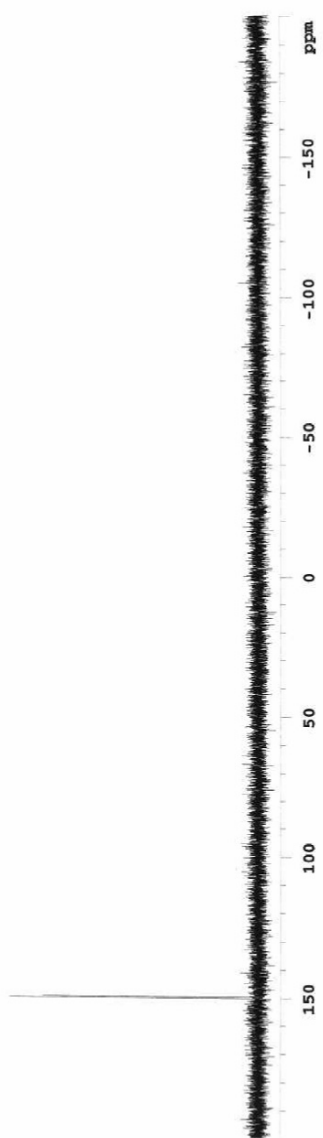
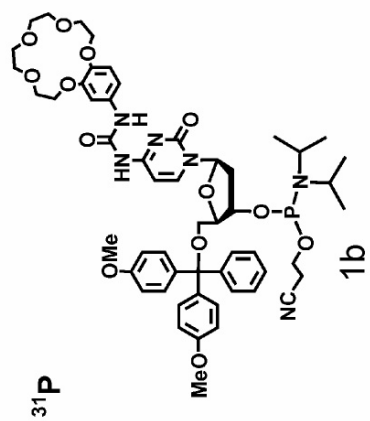


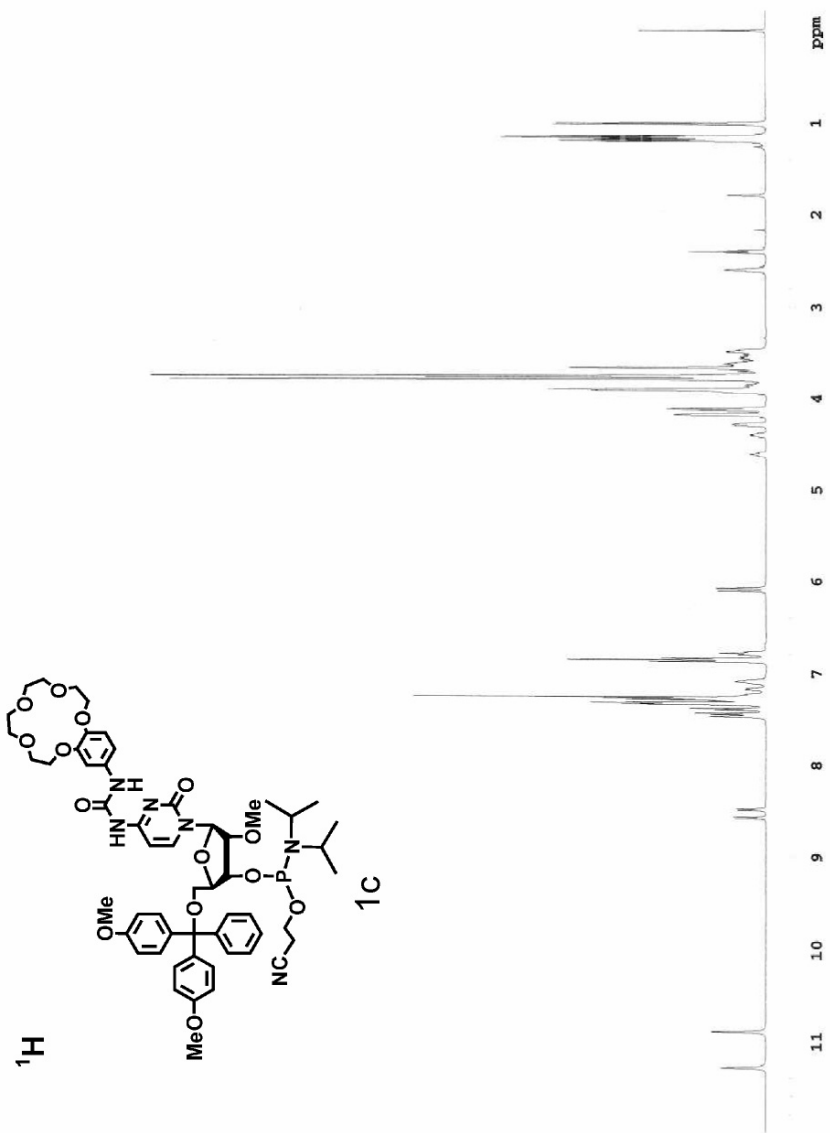


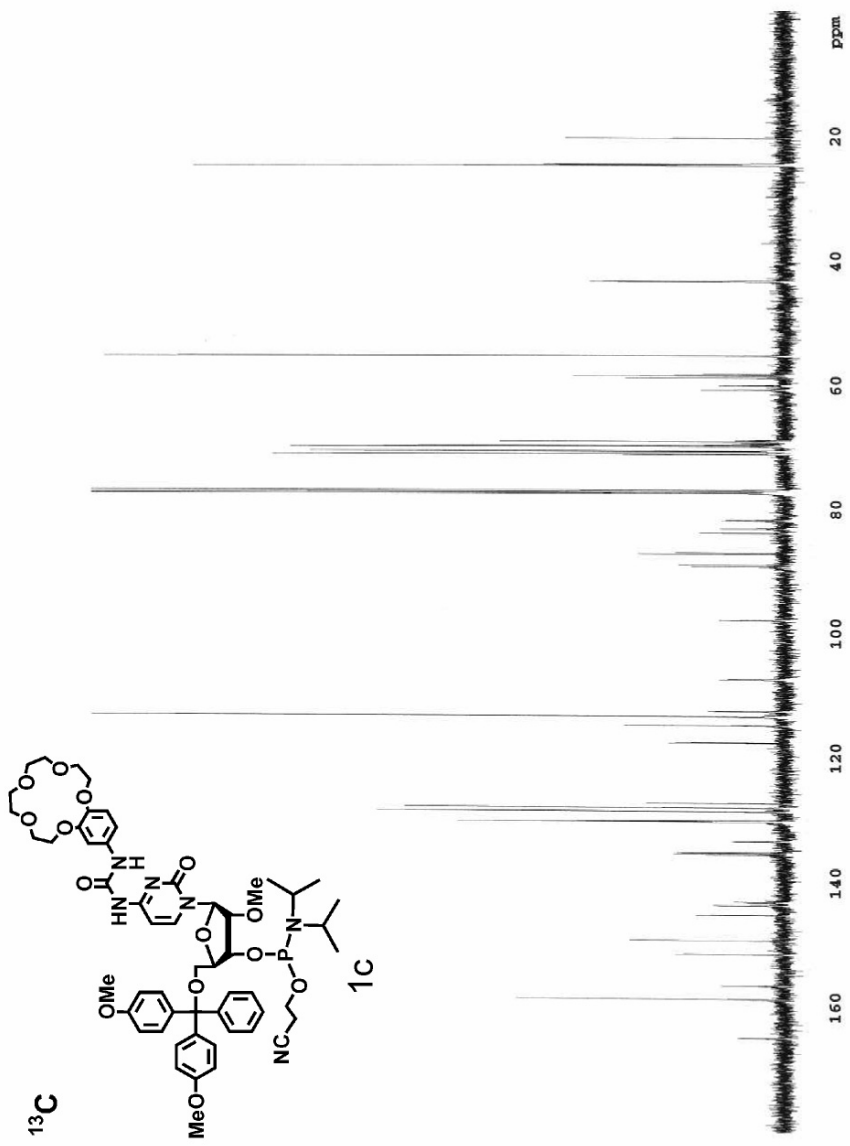


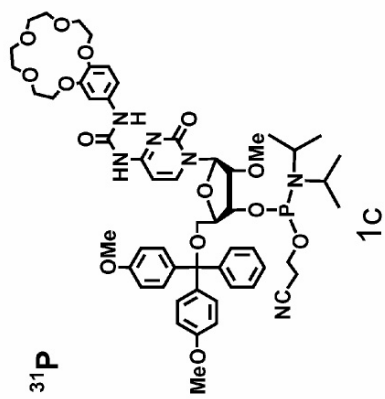


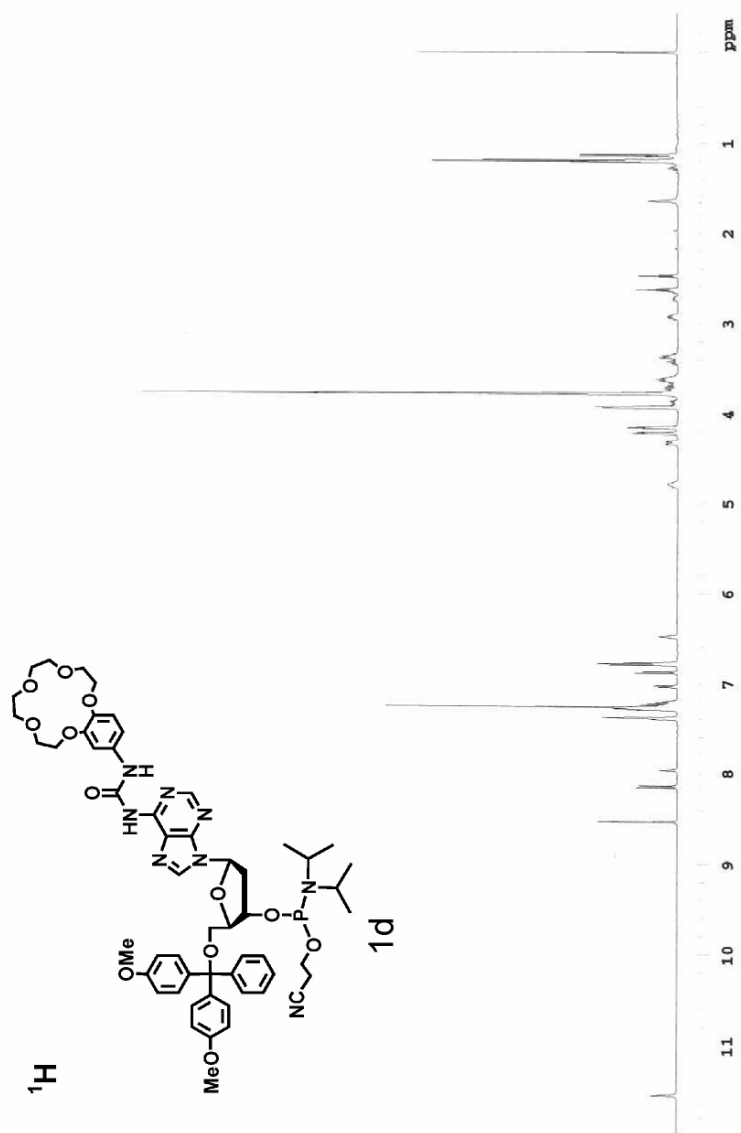


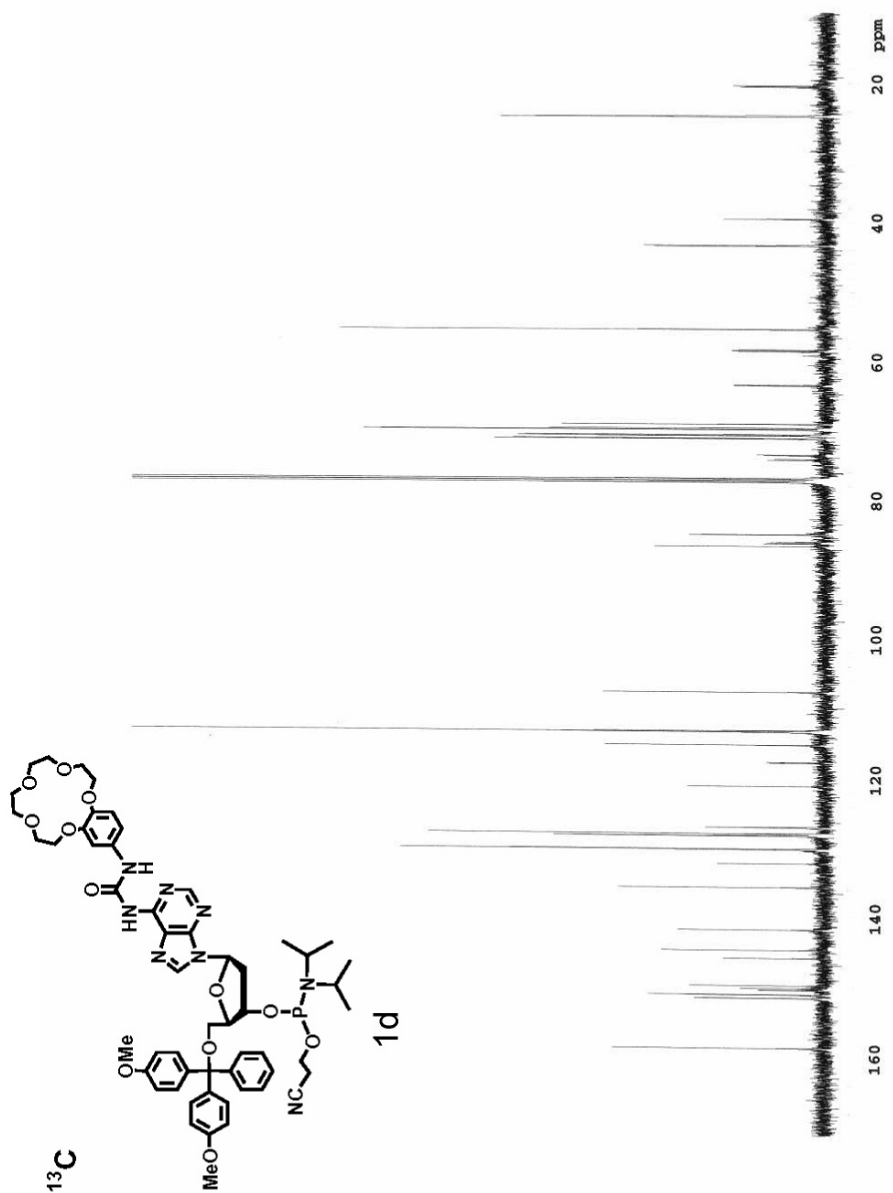


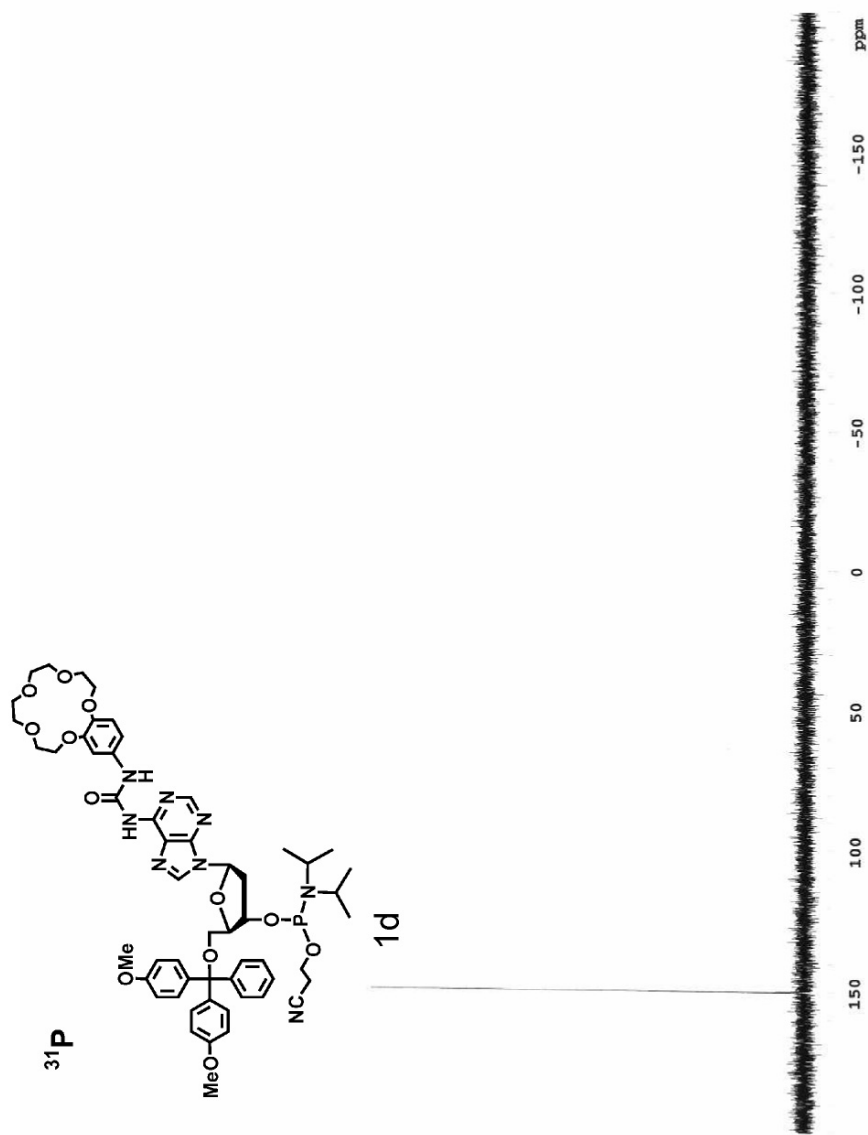


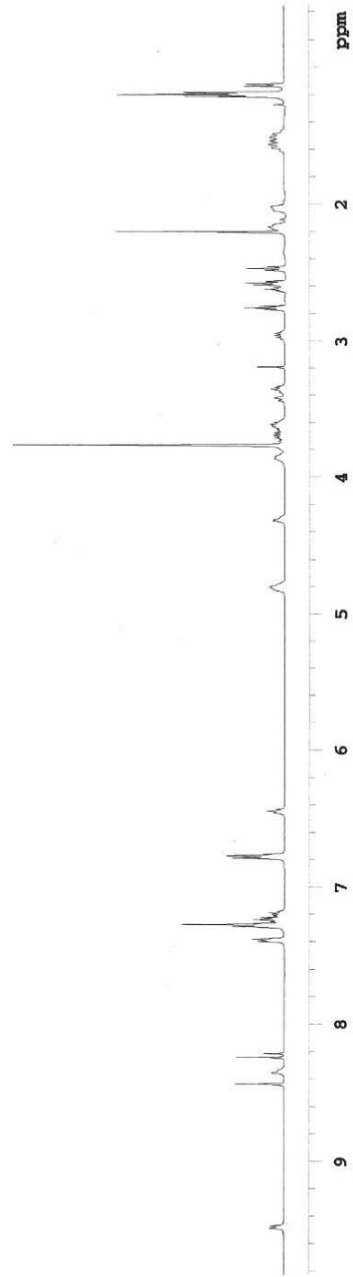
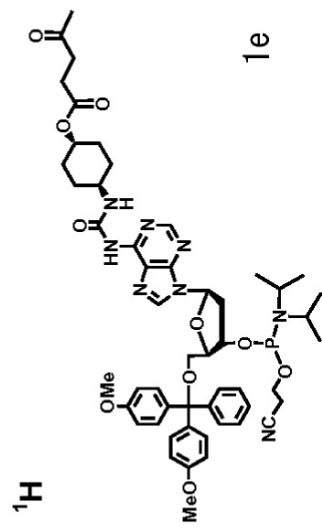




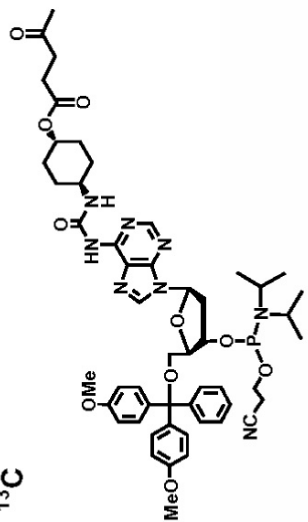








¹³C



1e

ppm

20

40

60

80

100

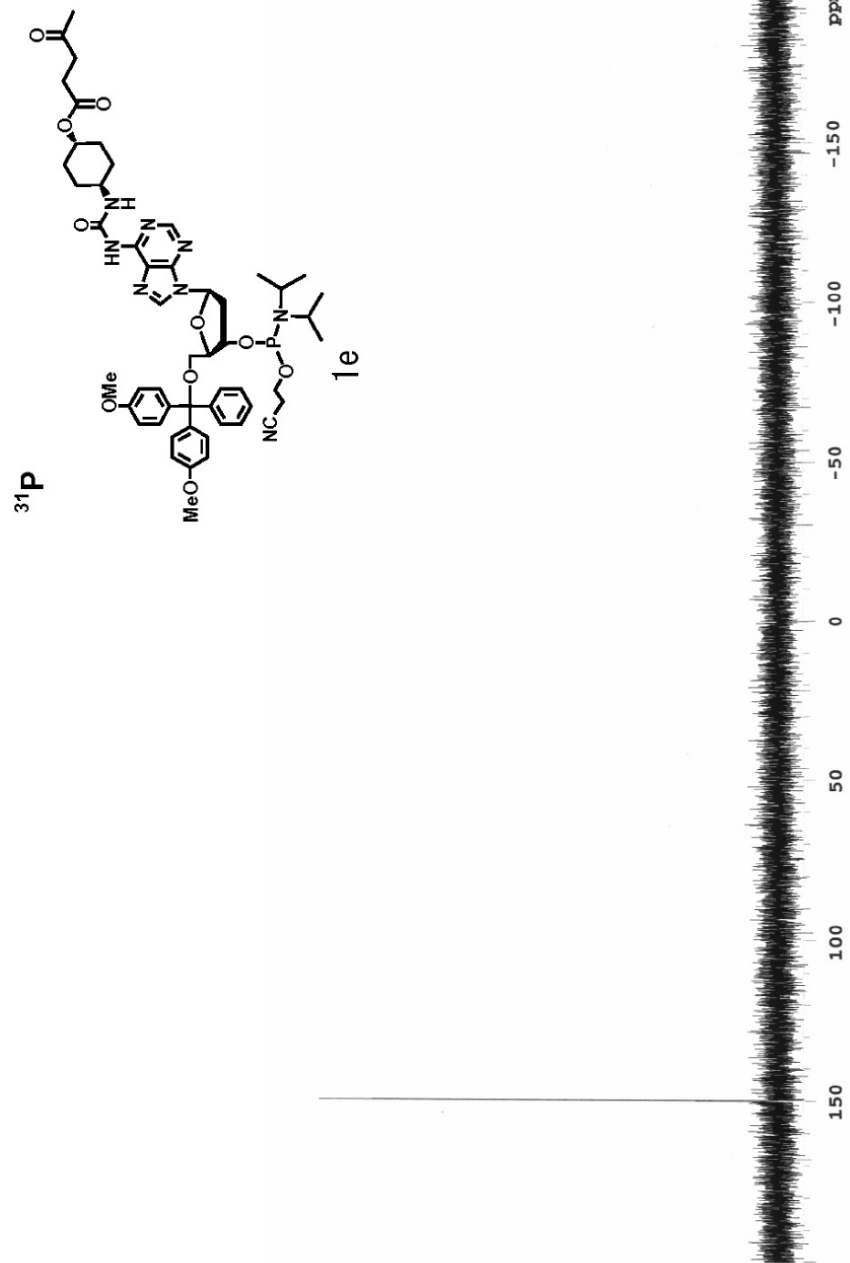
120

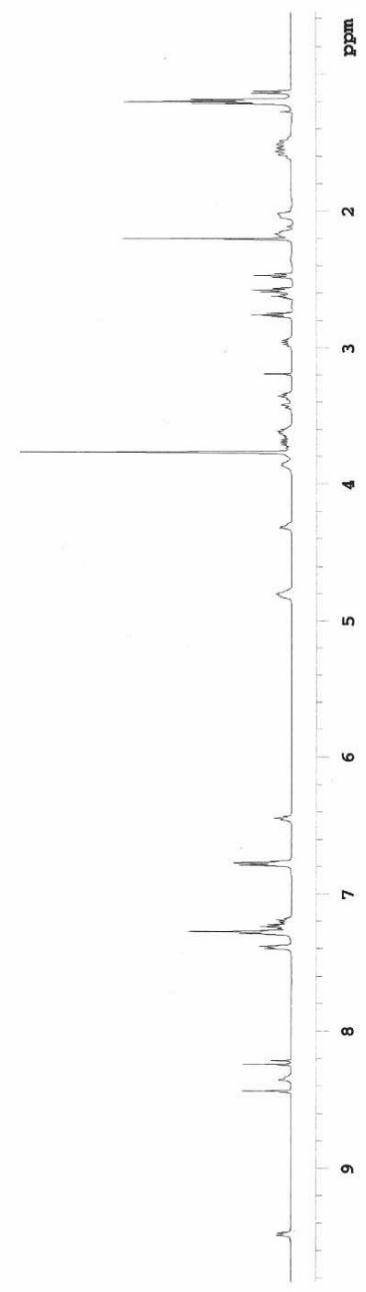
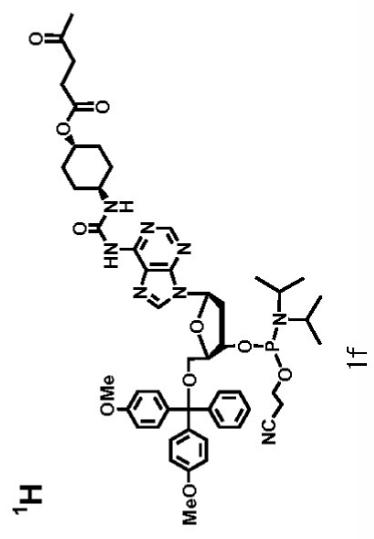
140

160

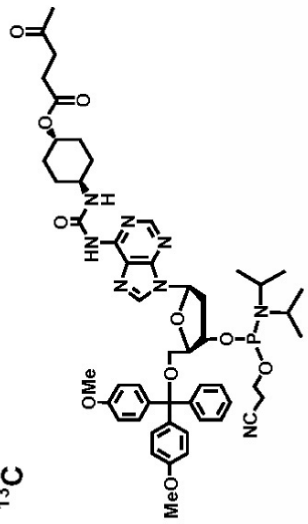
180

200





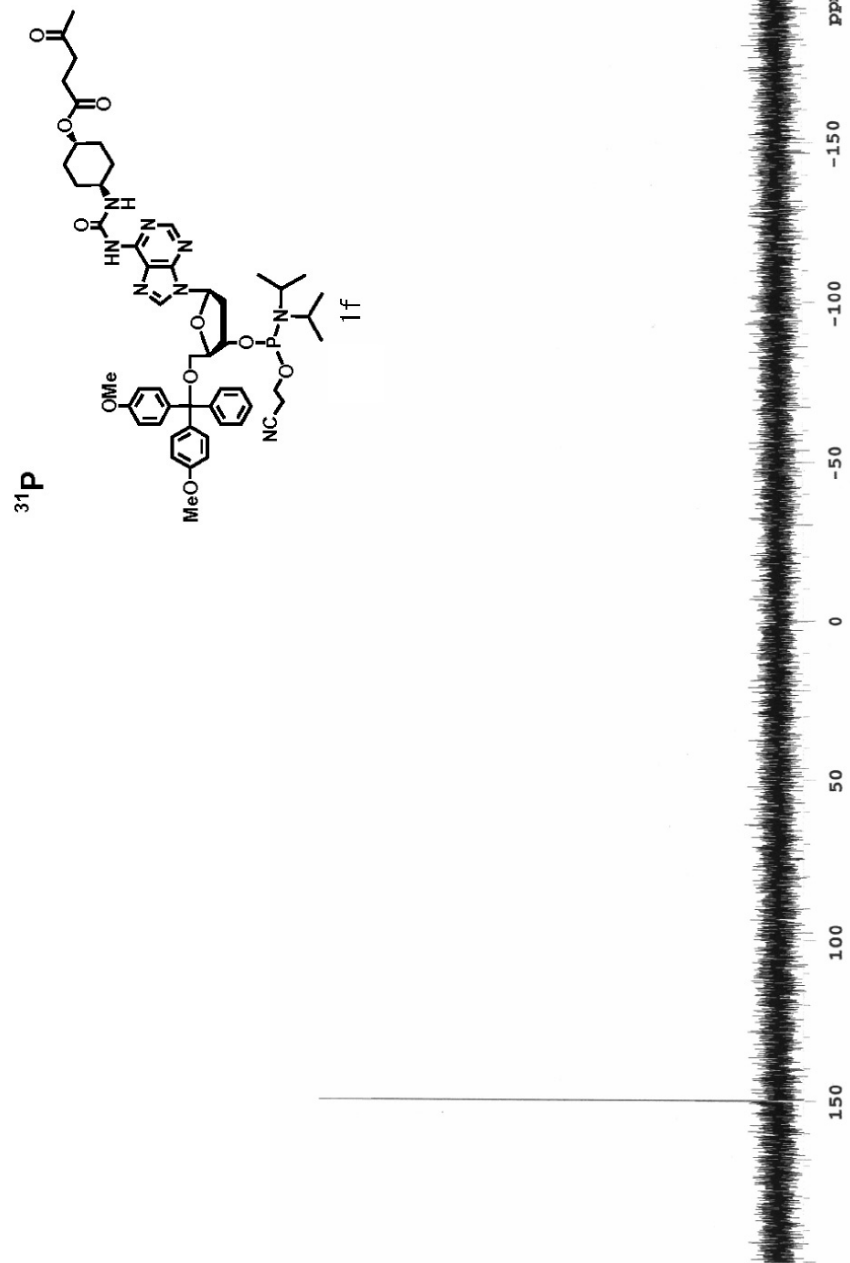
¹³C

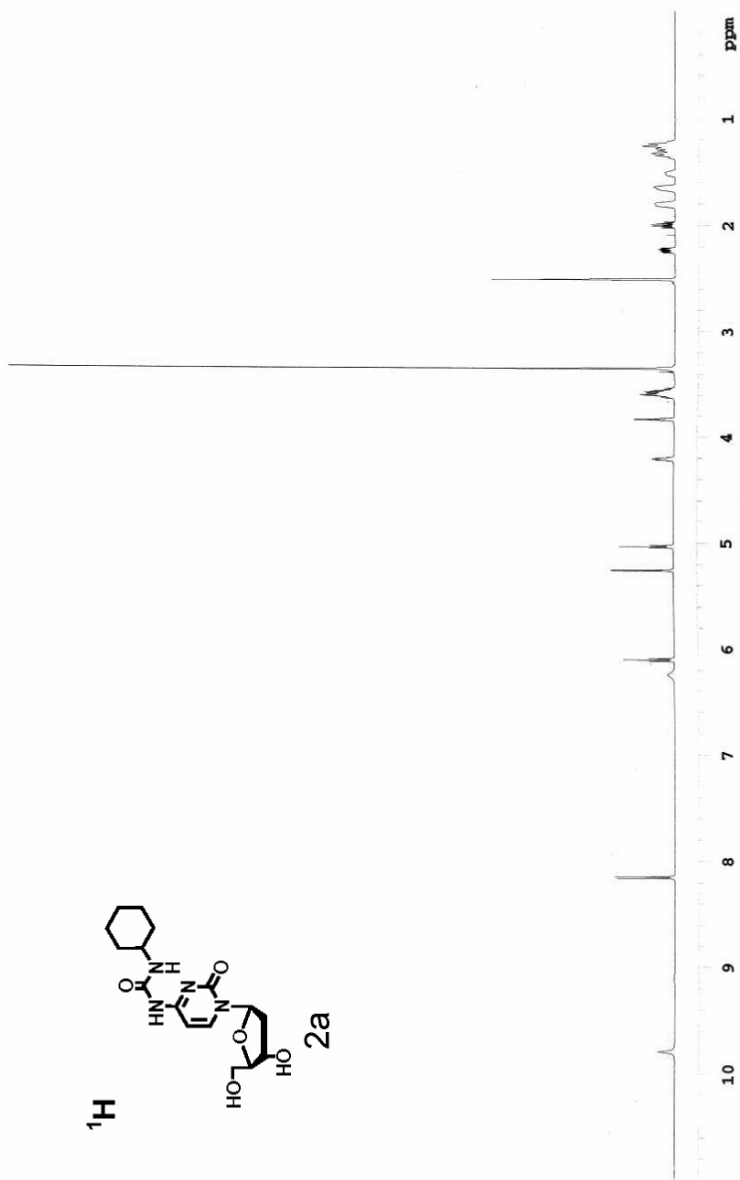
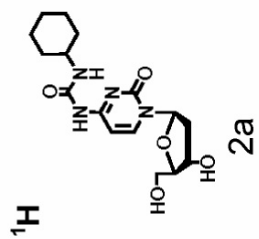


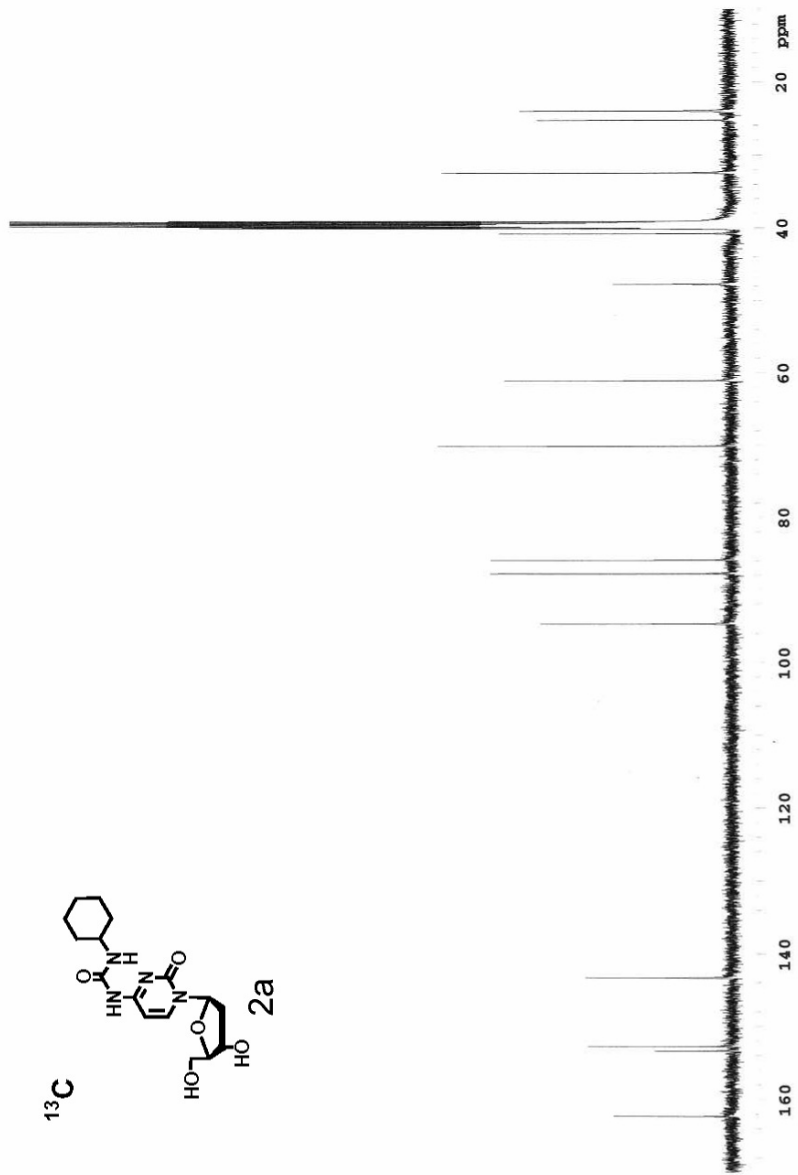
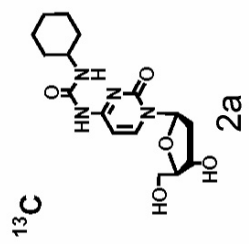
1f

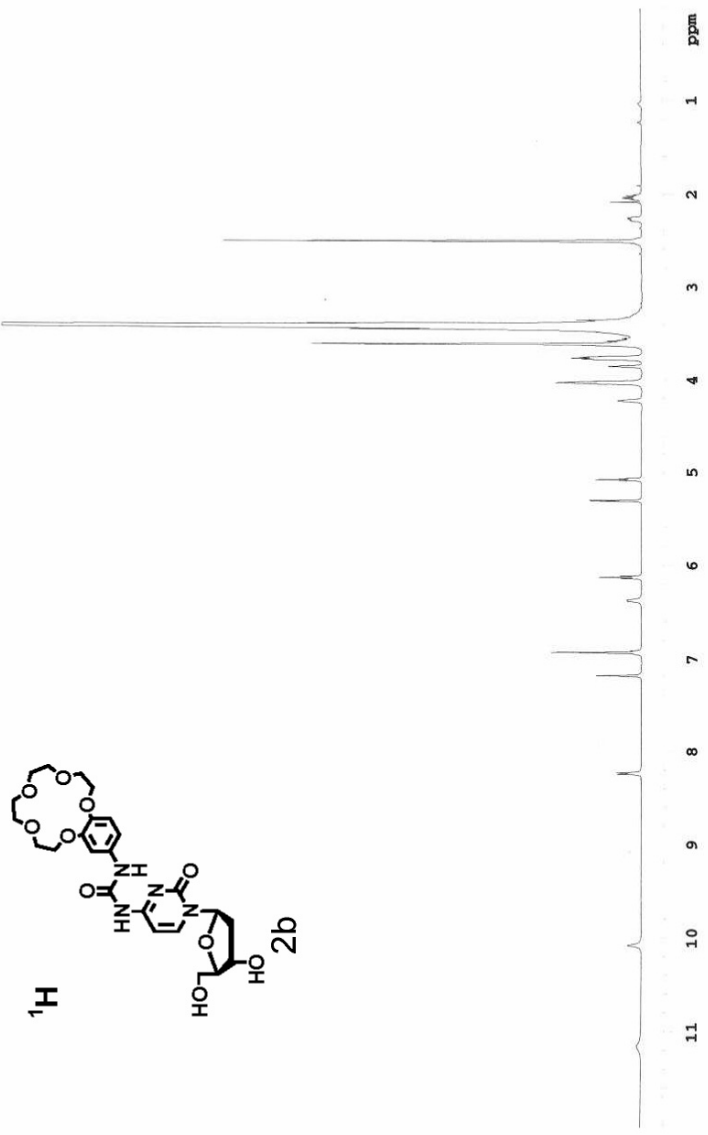
ppm

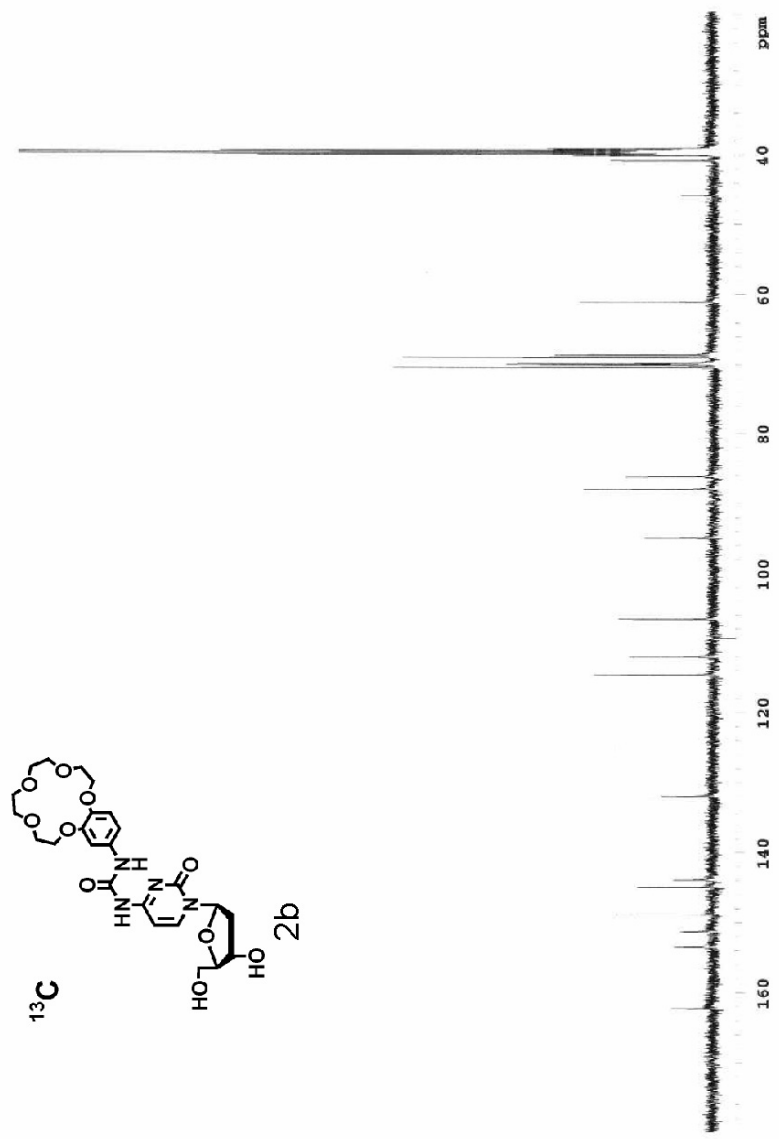


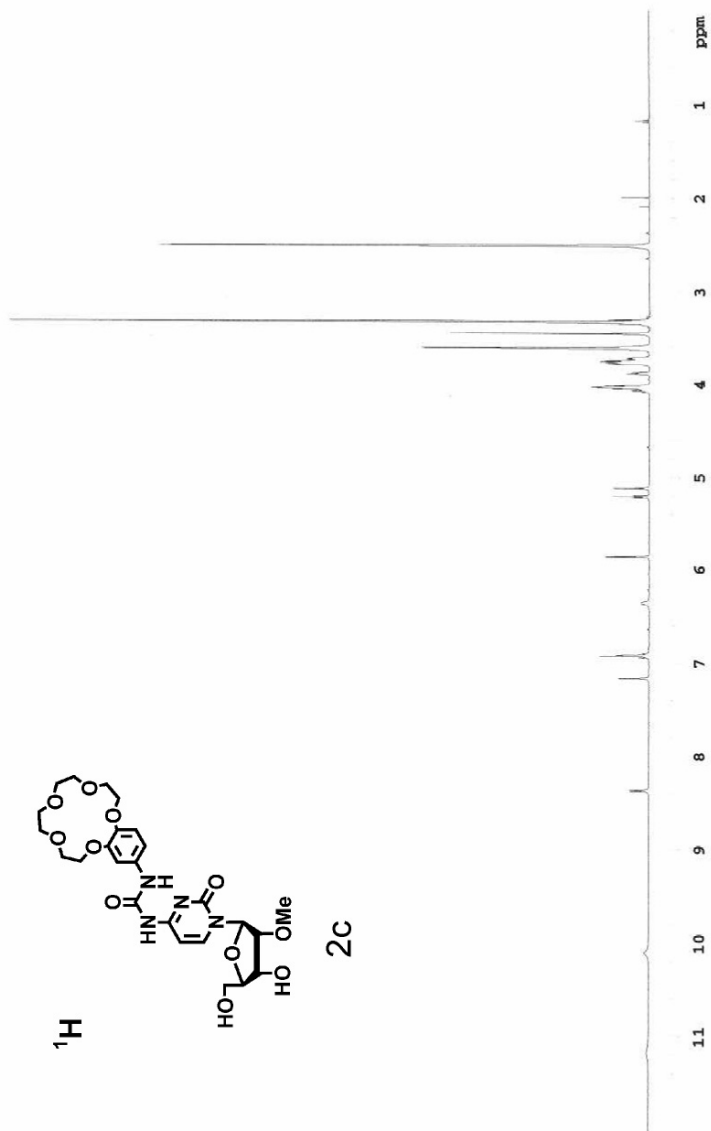


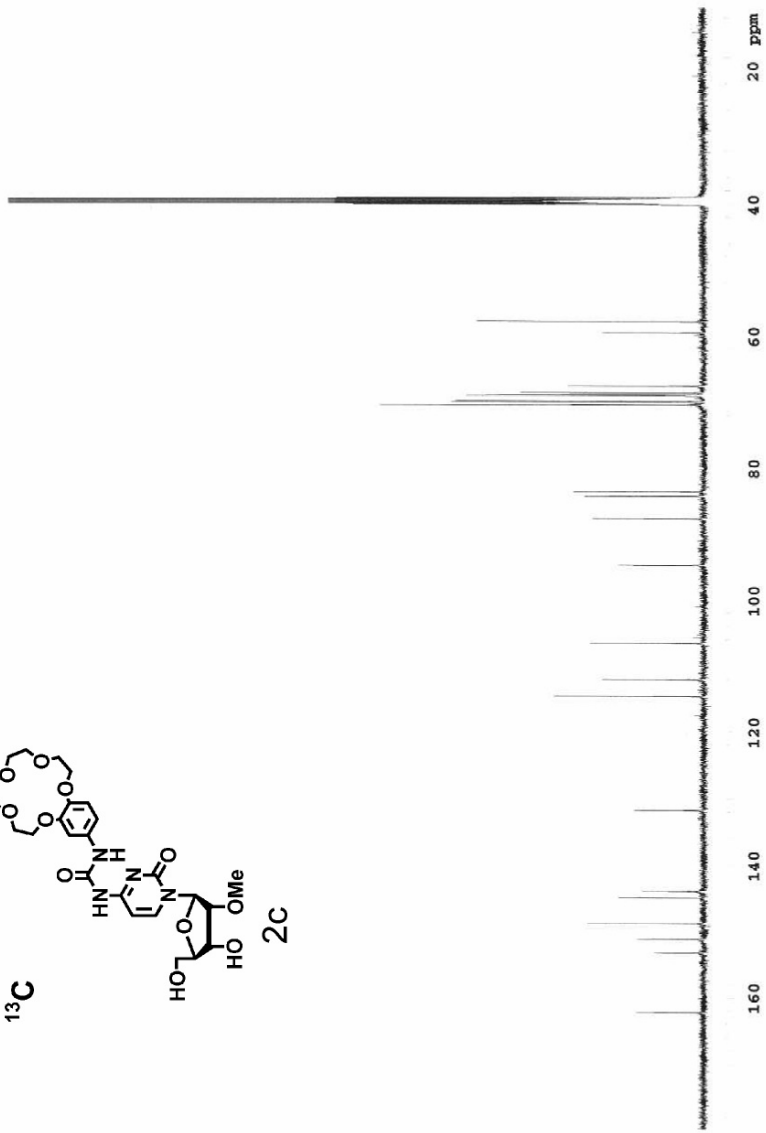
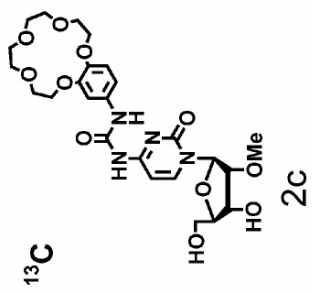


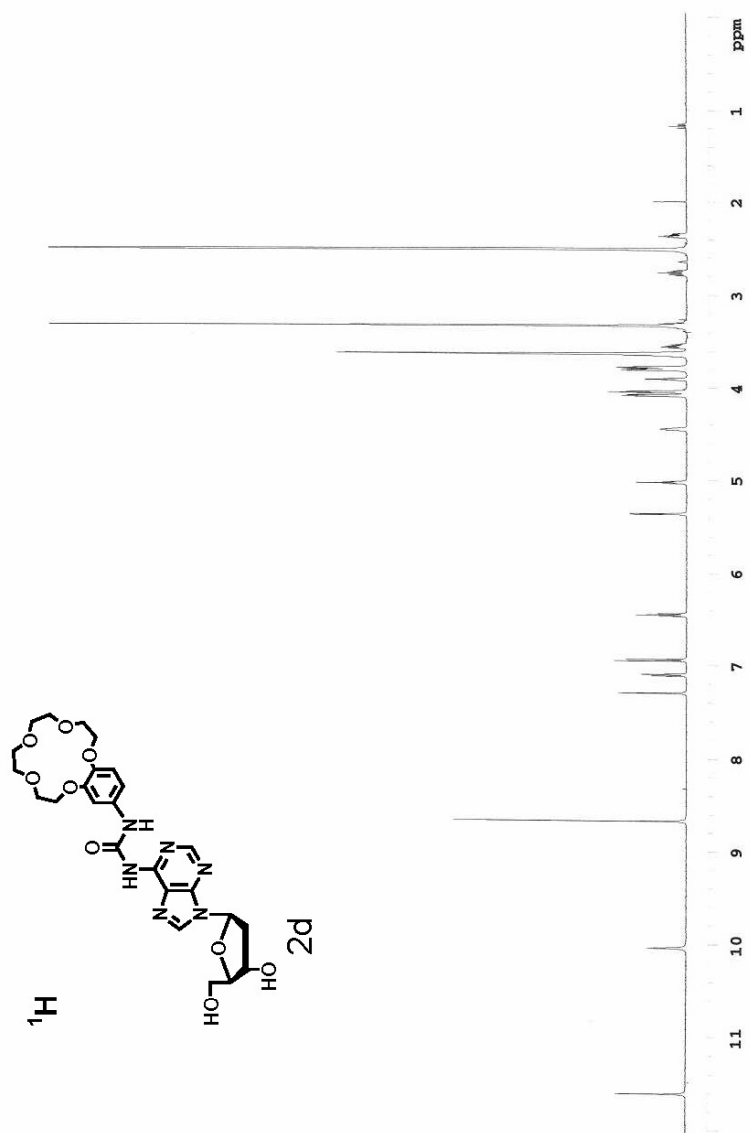


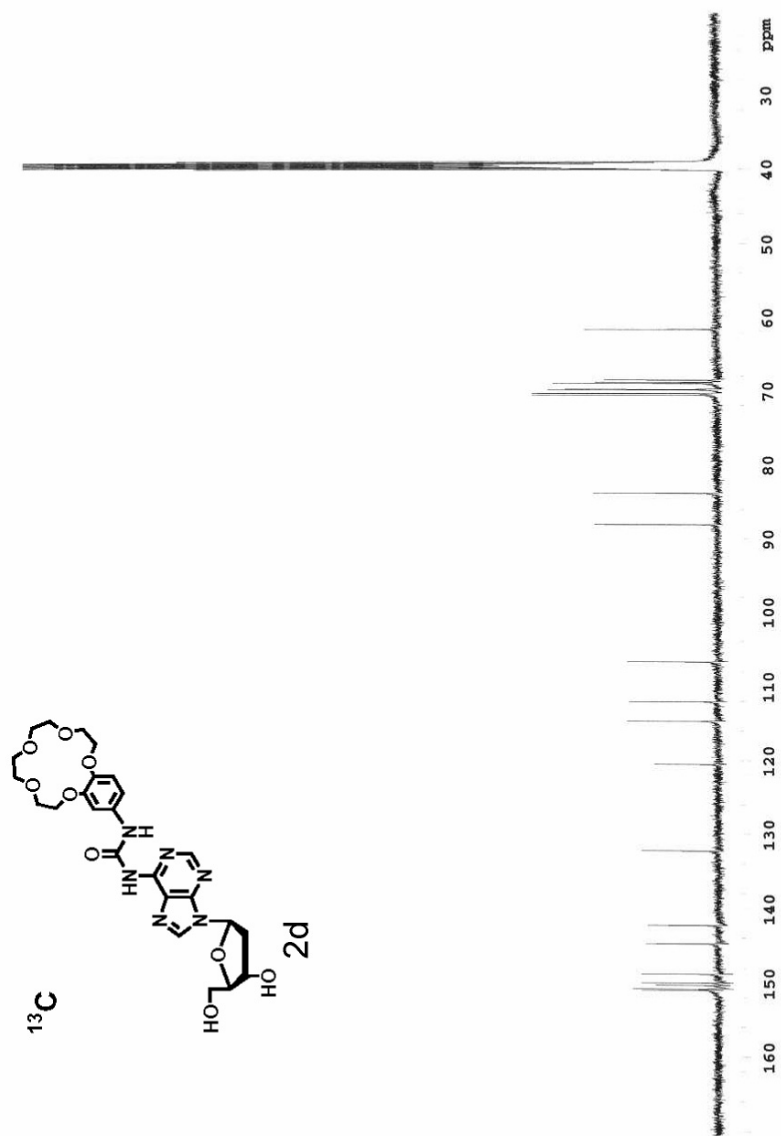


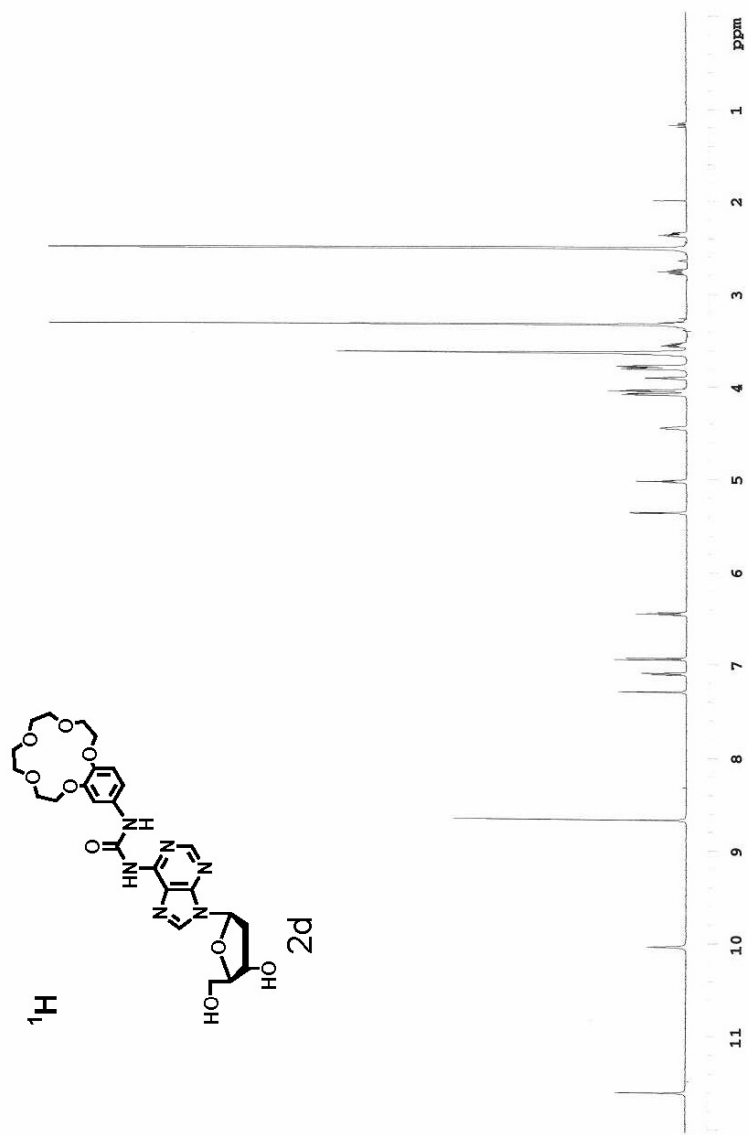


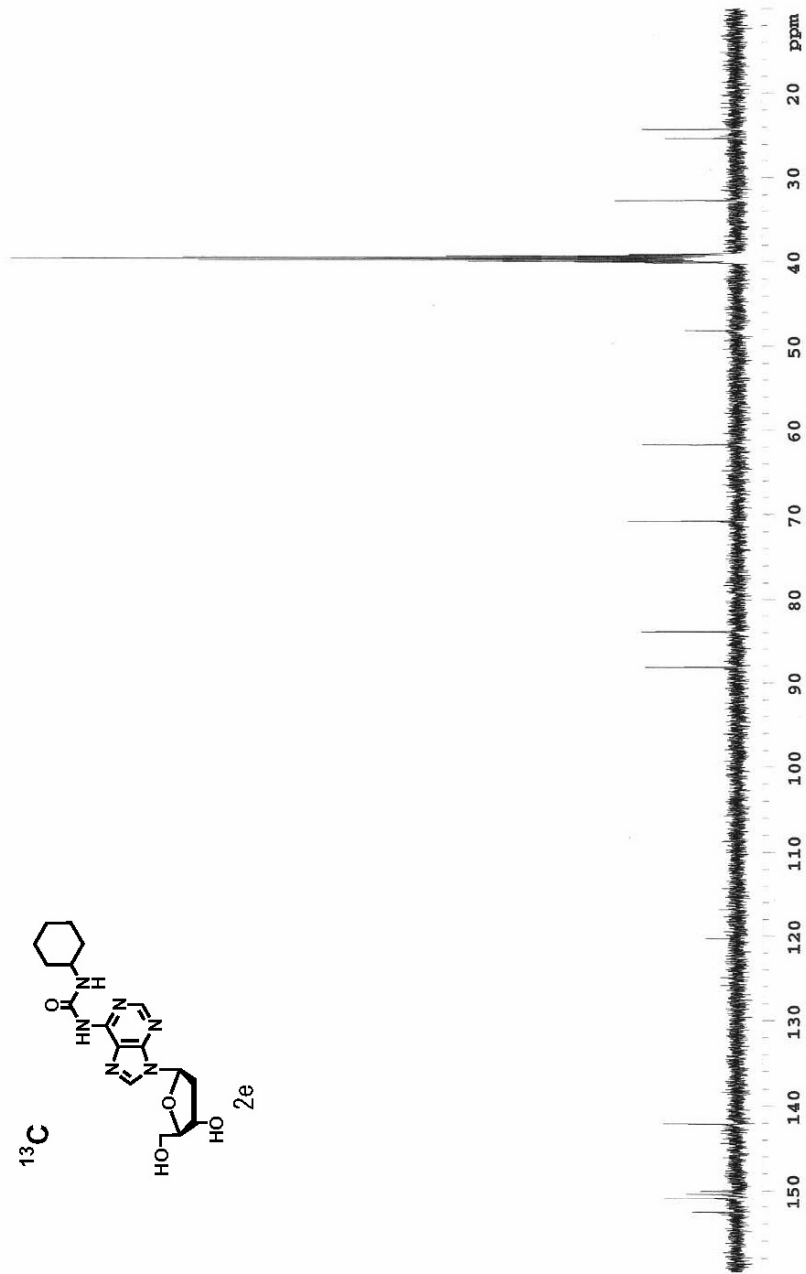
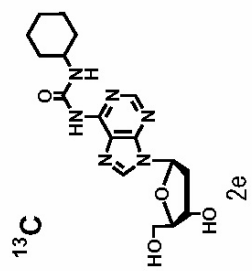


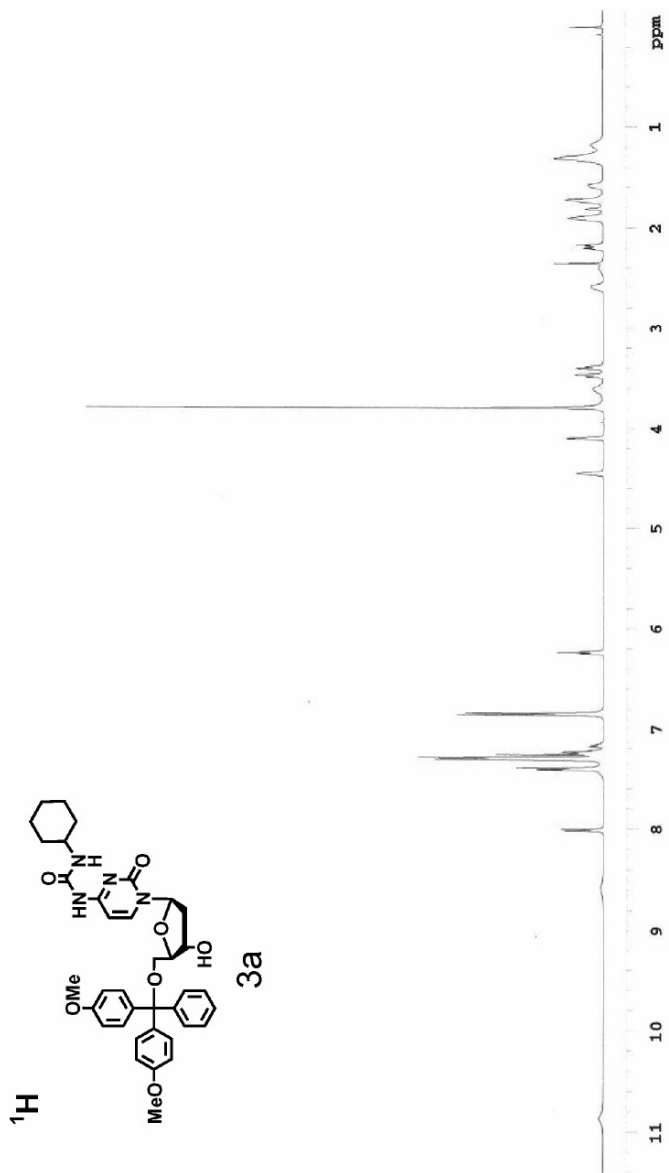


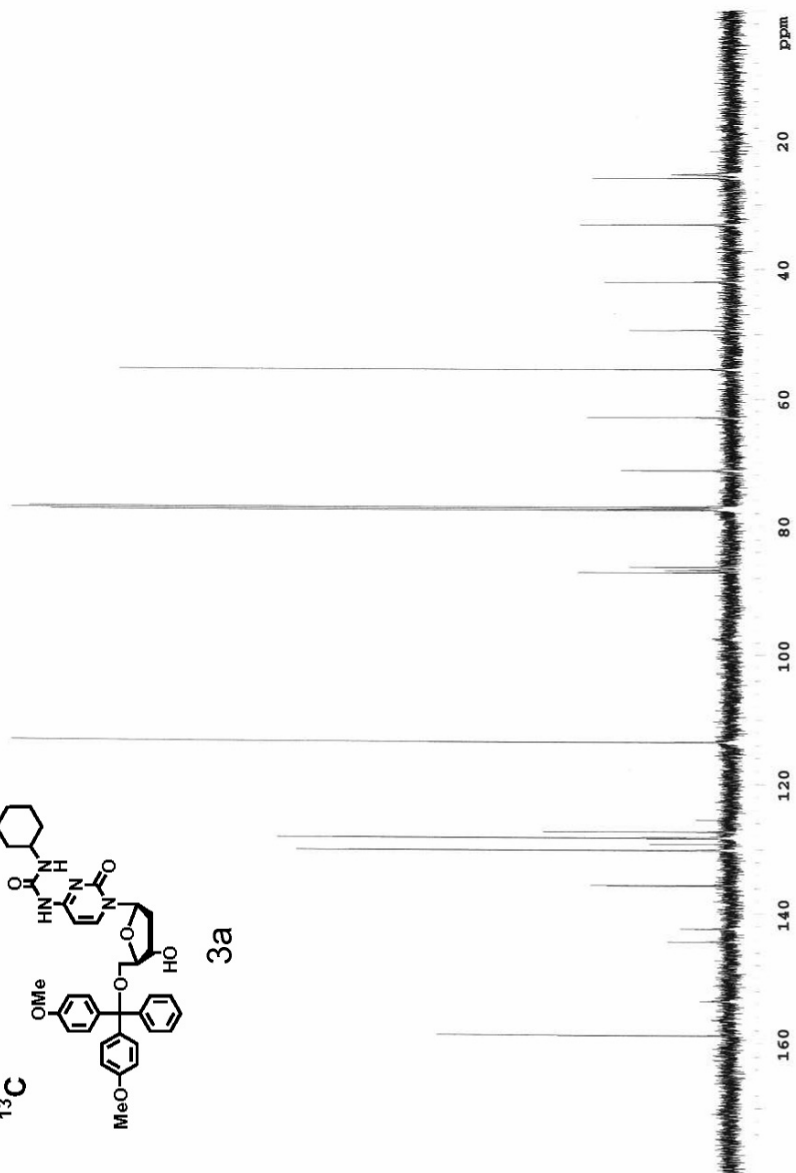
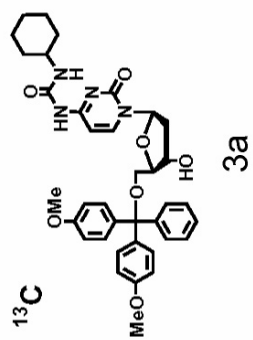


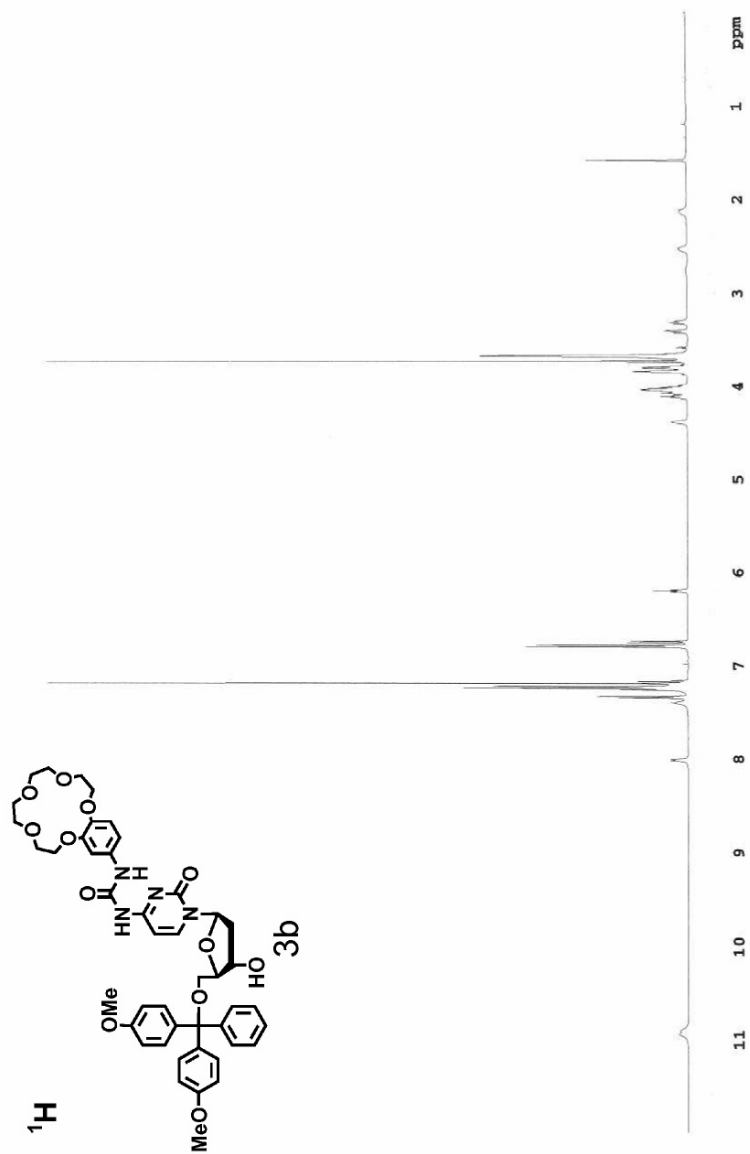


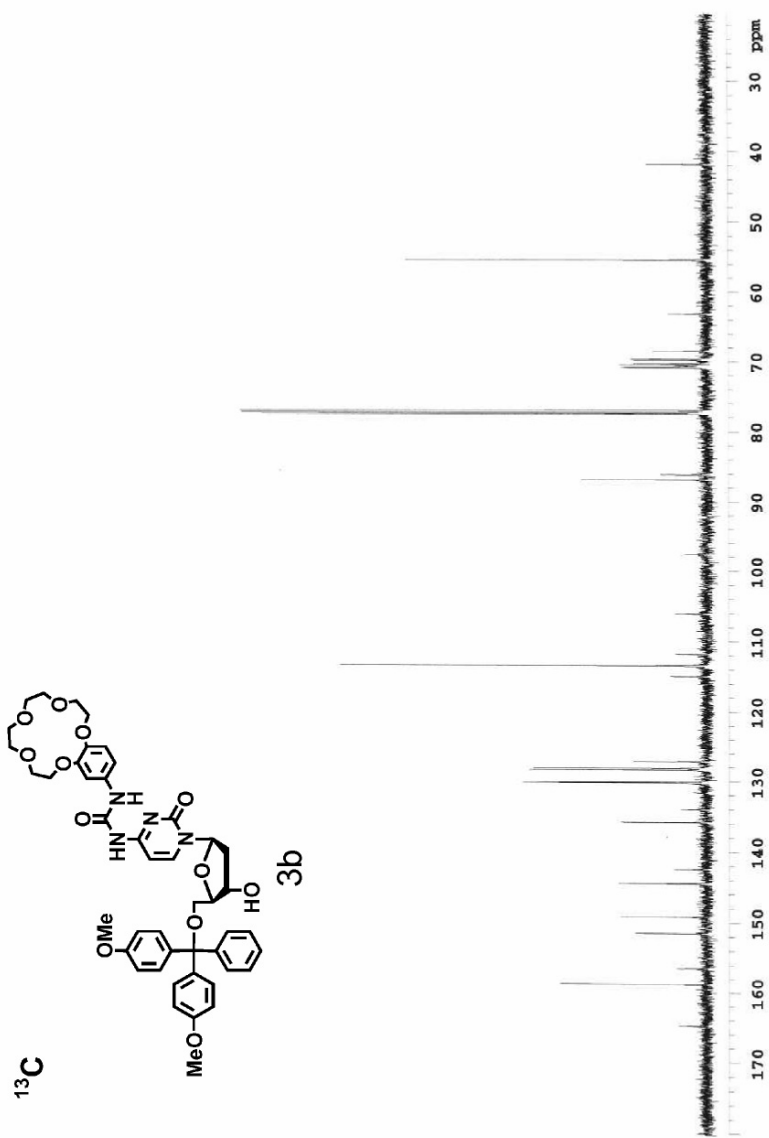


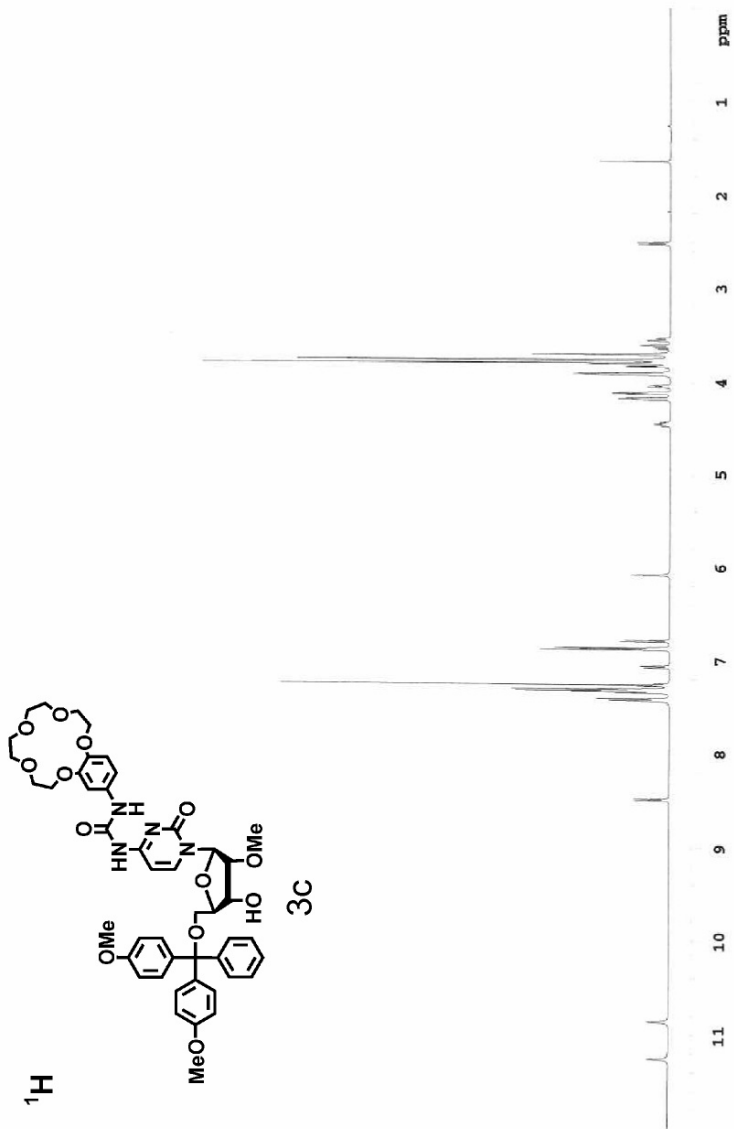


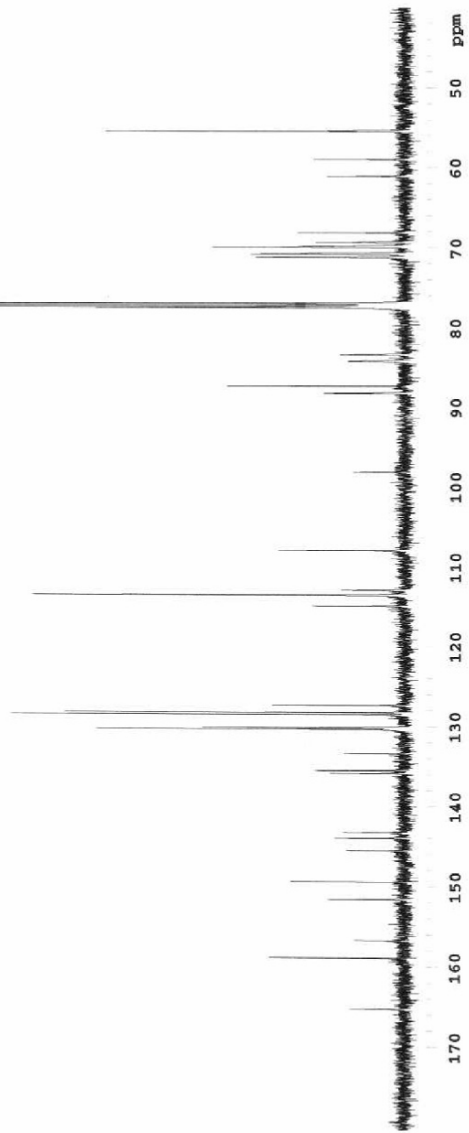
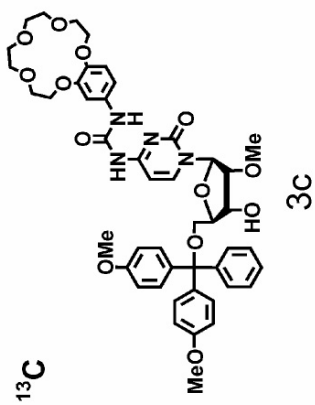


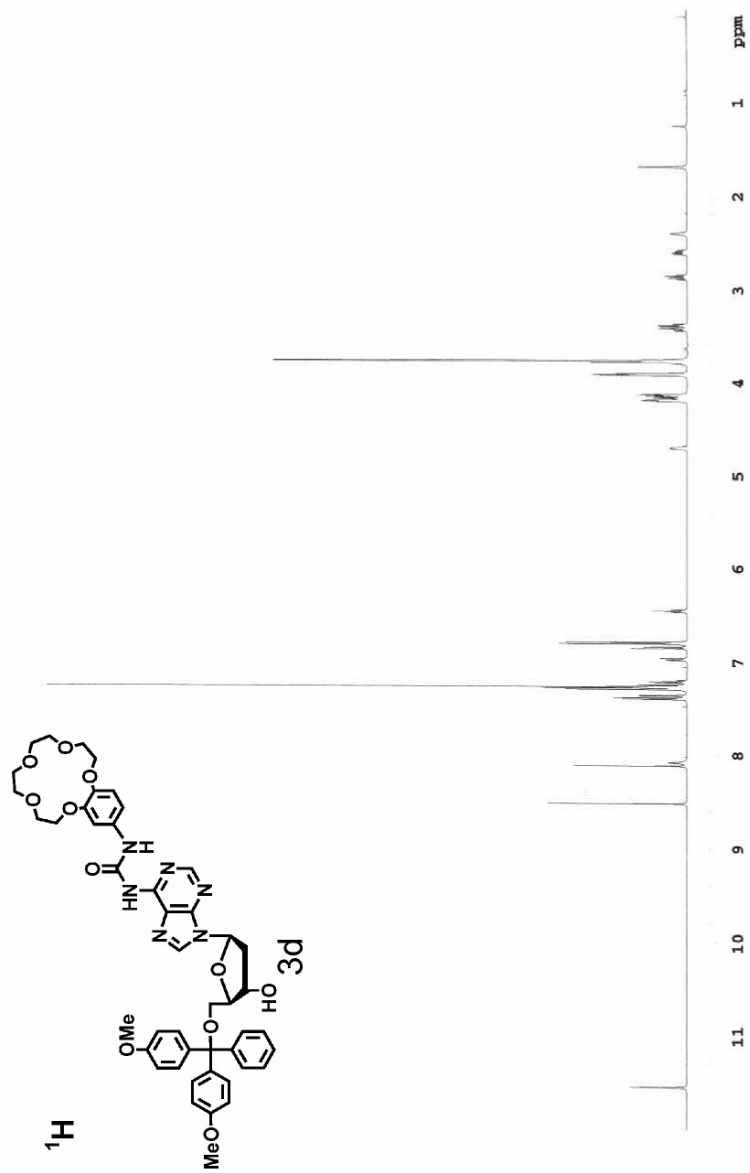


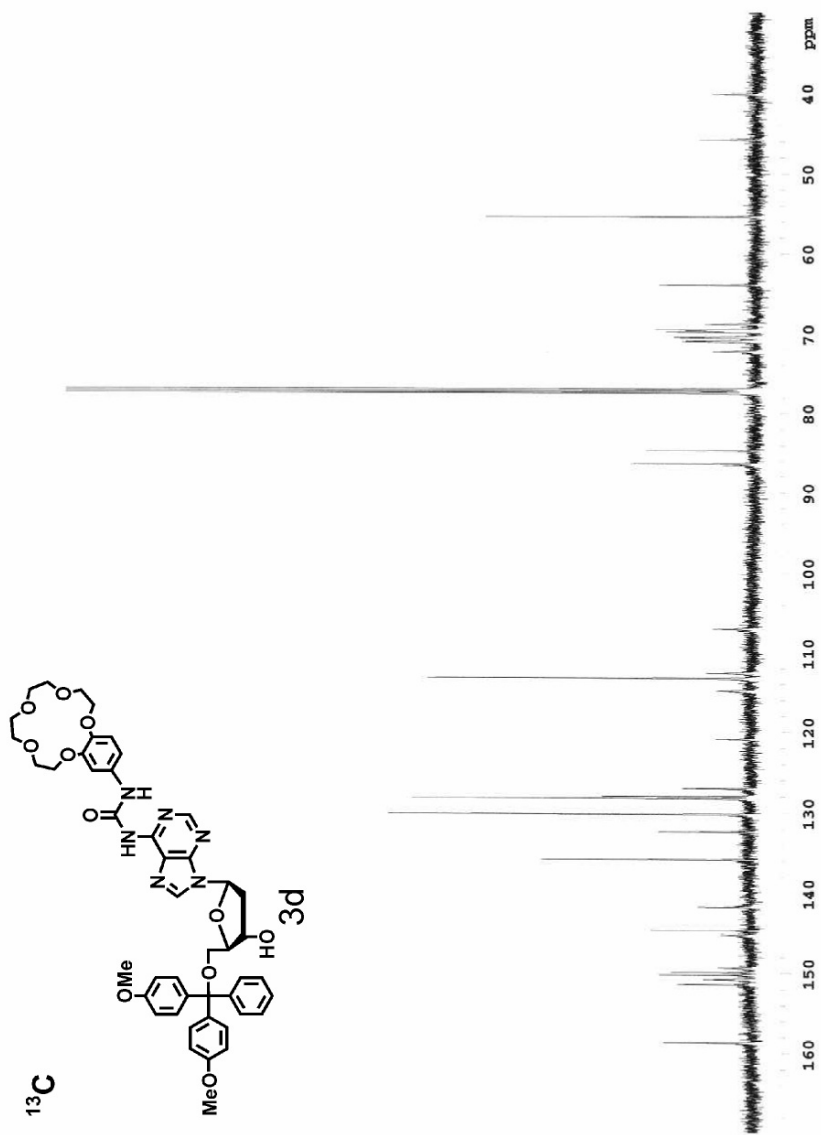


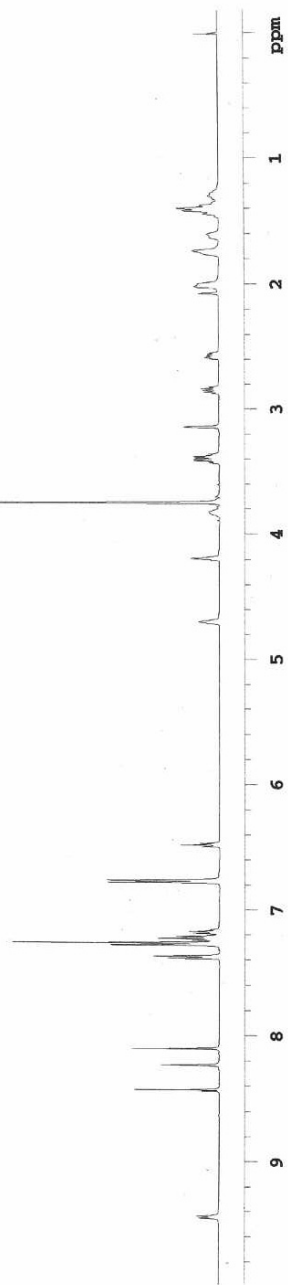
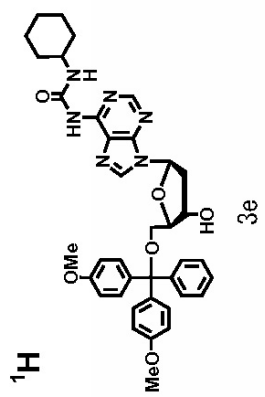


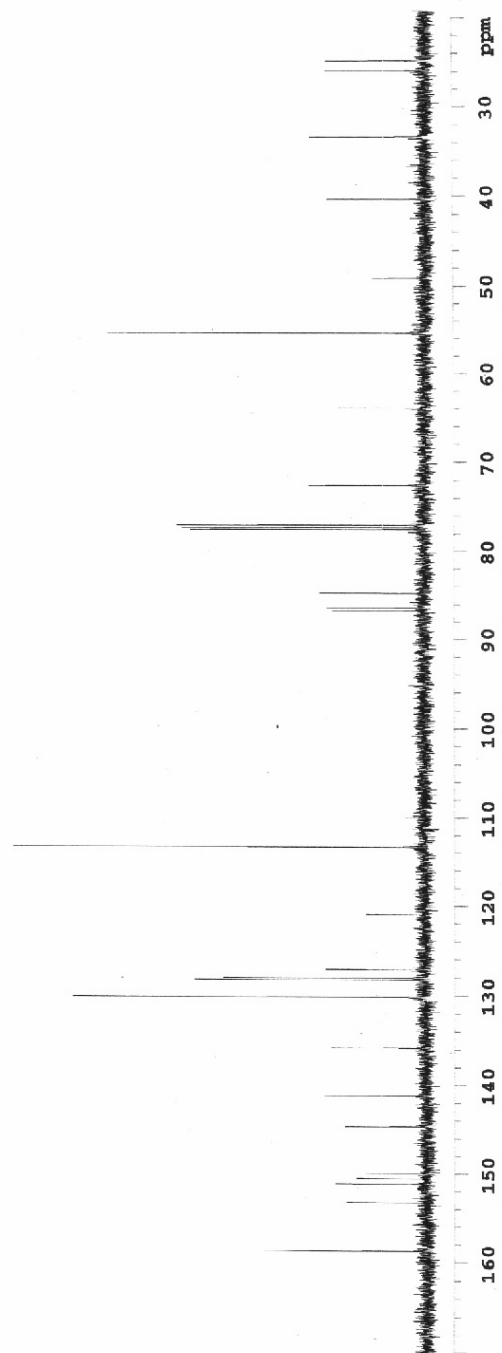
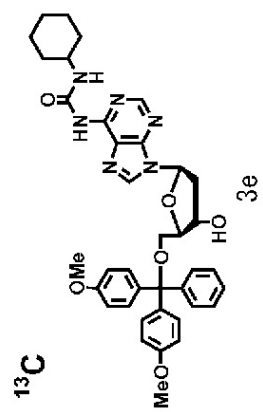


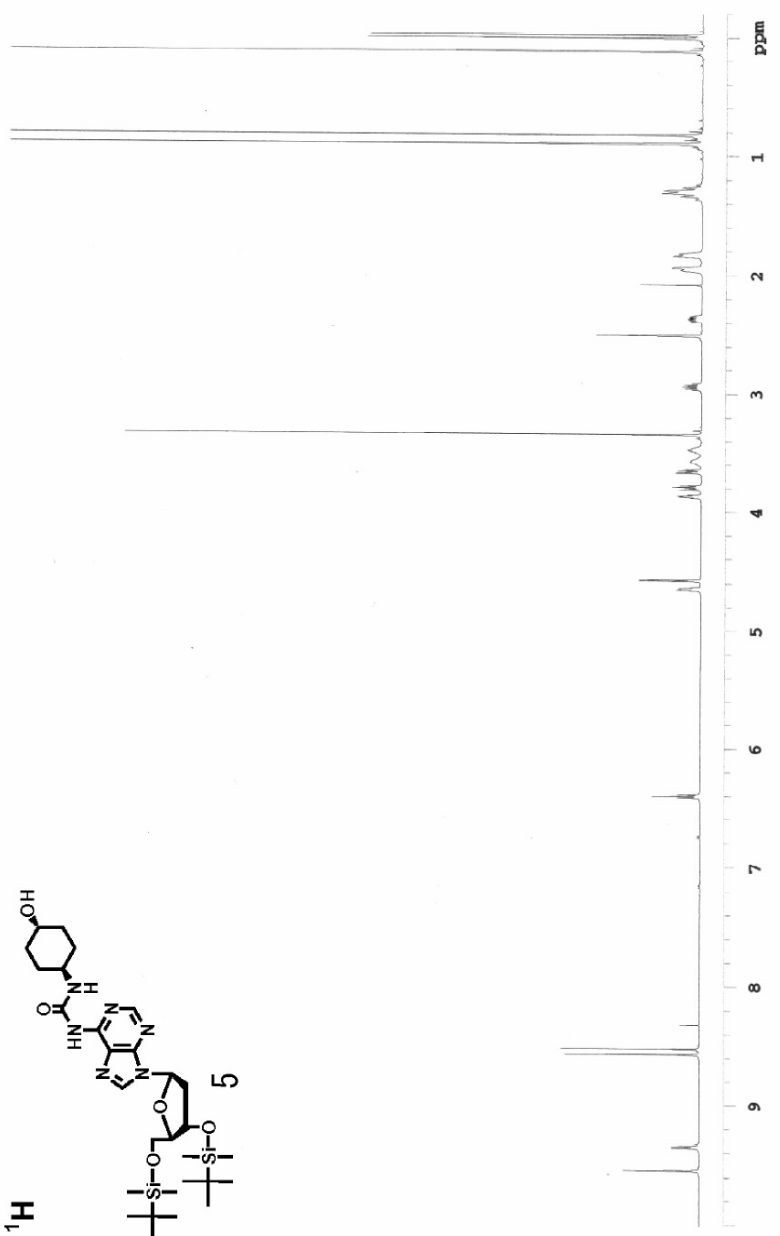
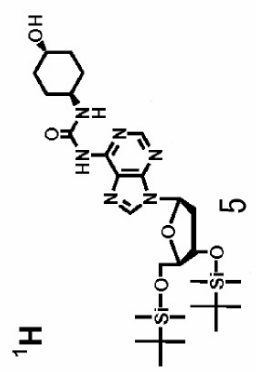




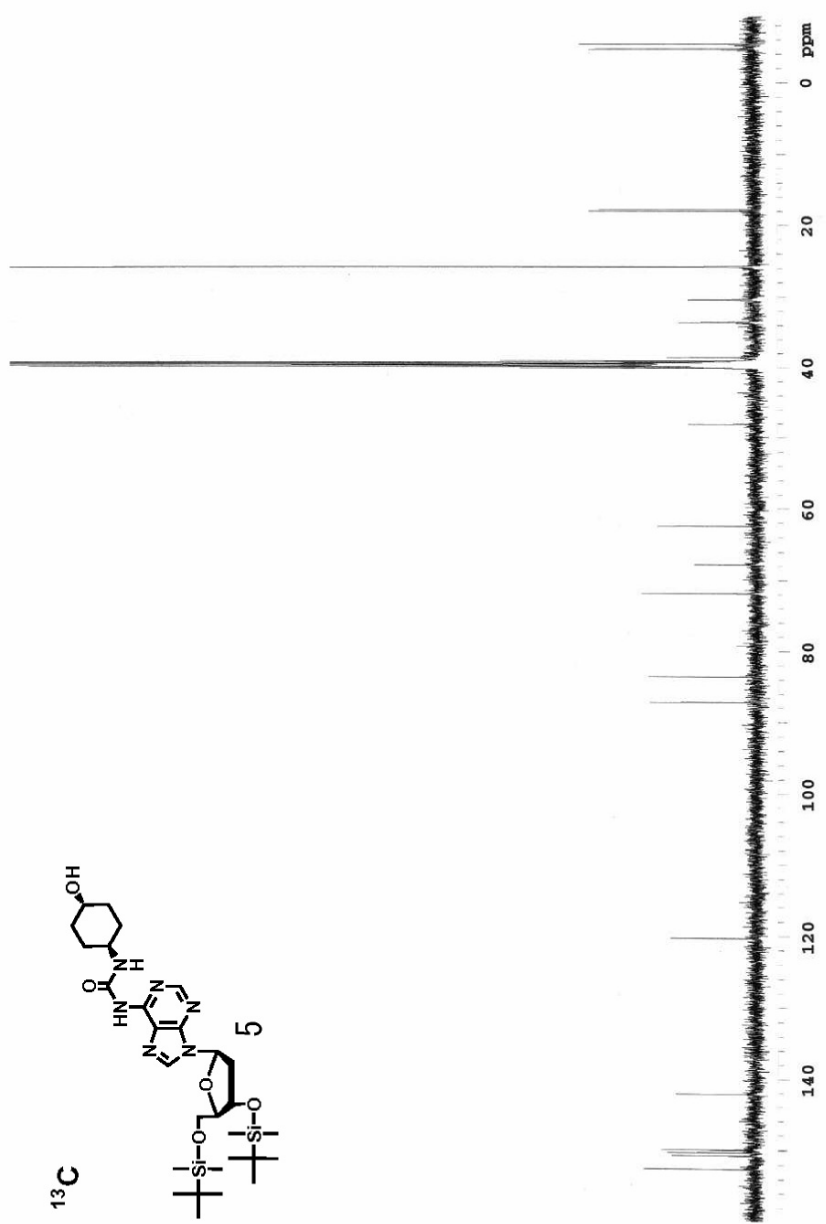
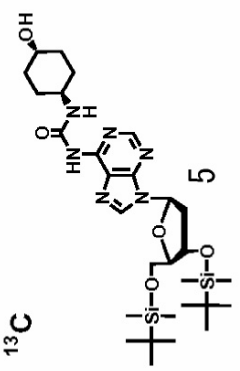




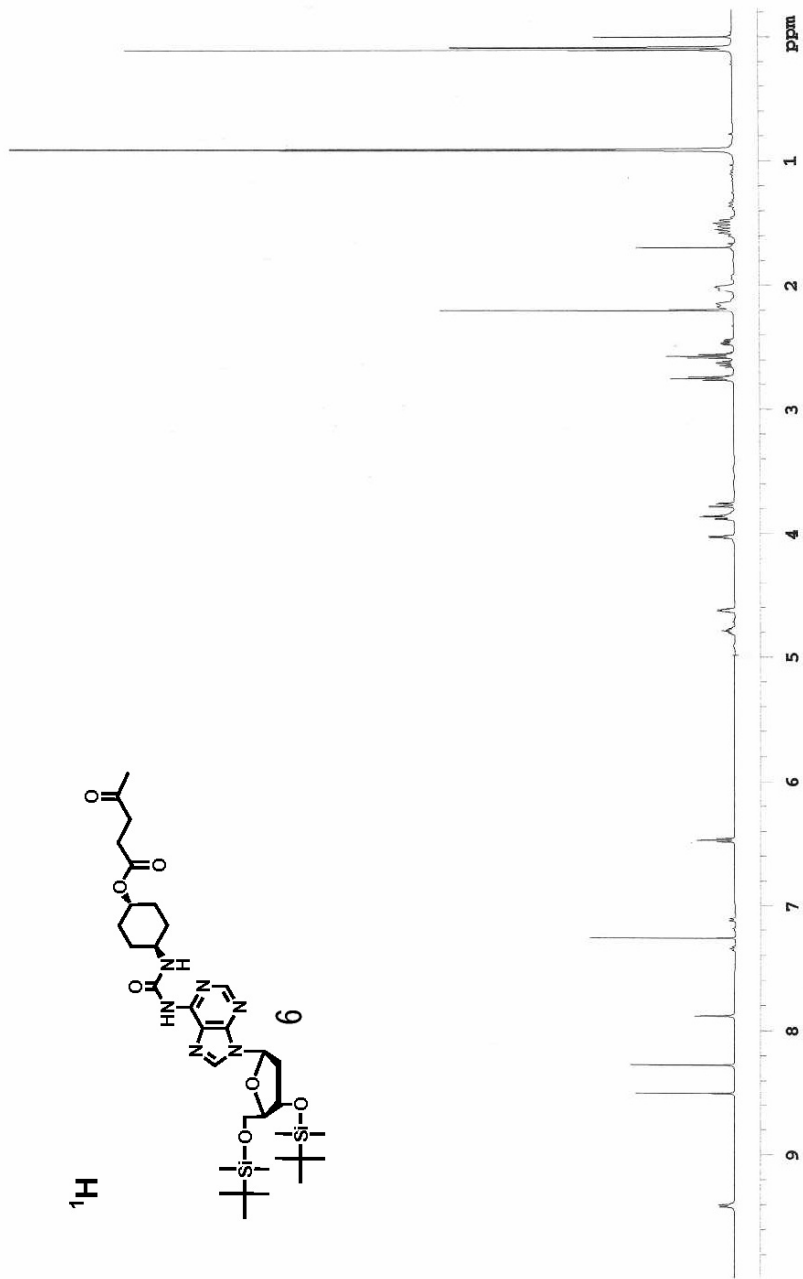
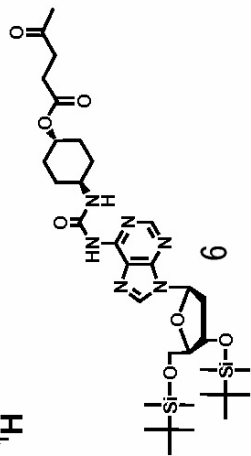




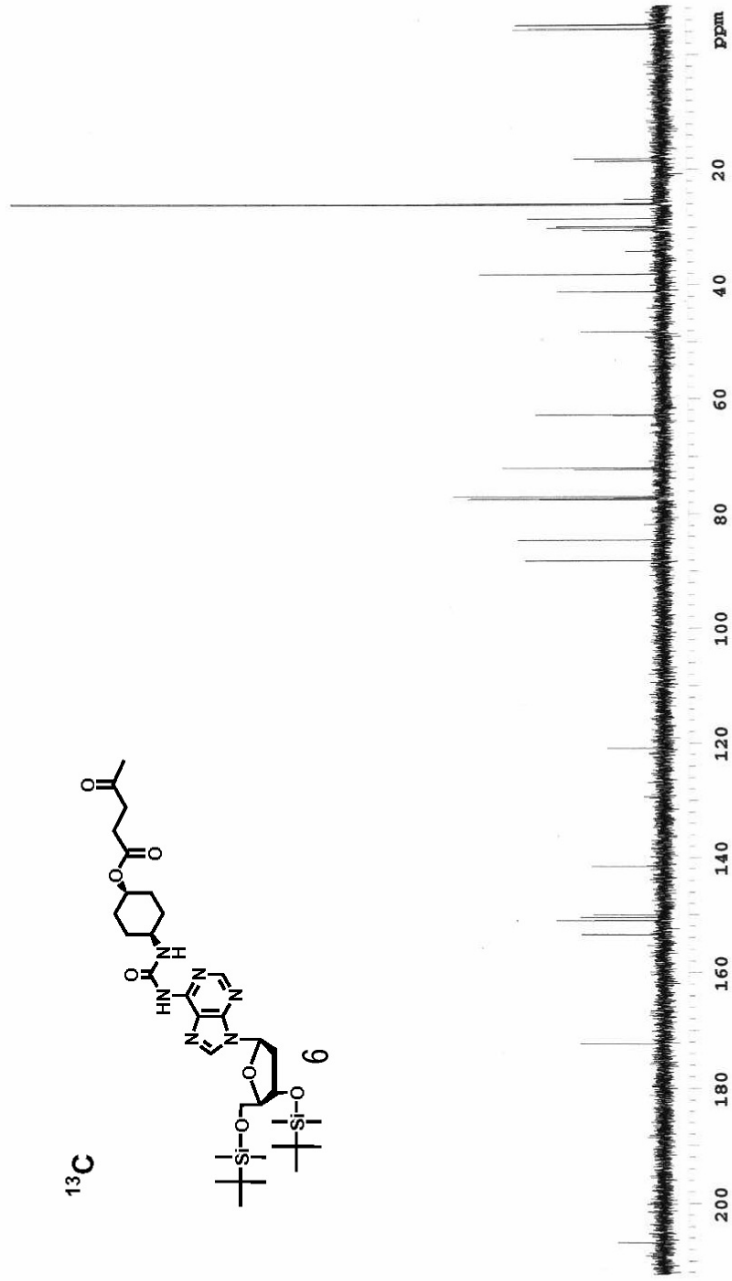
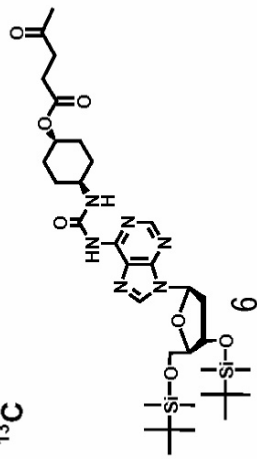
¹³C

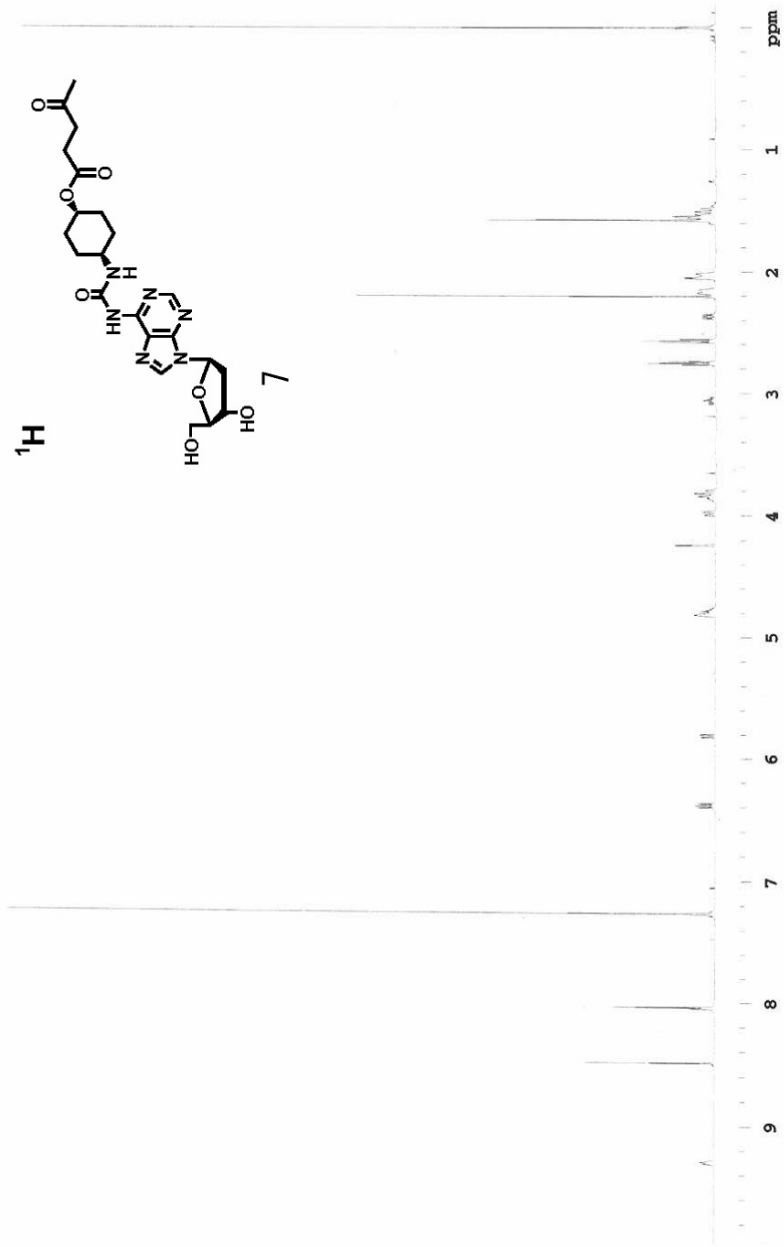


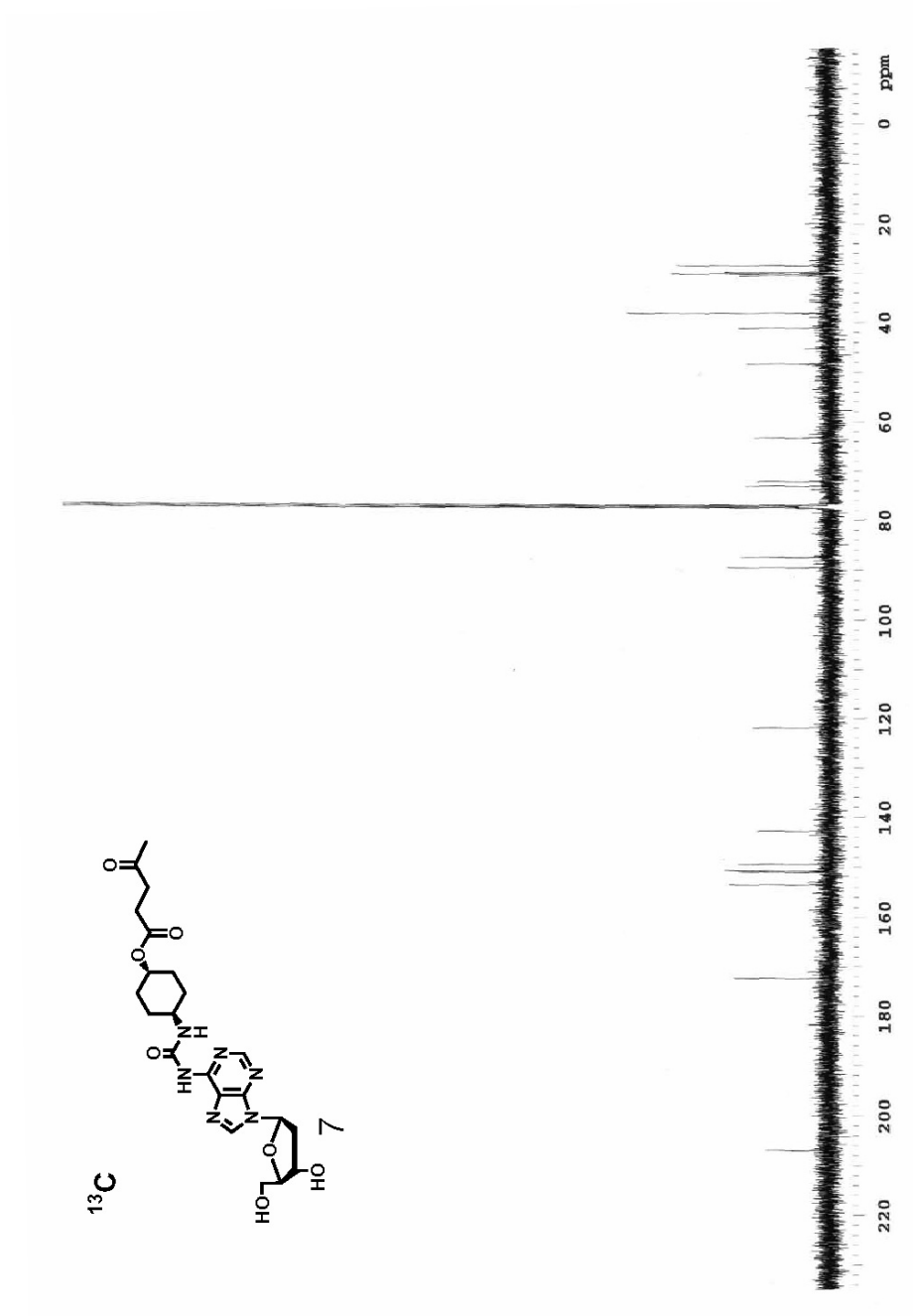
¹H

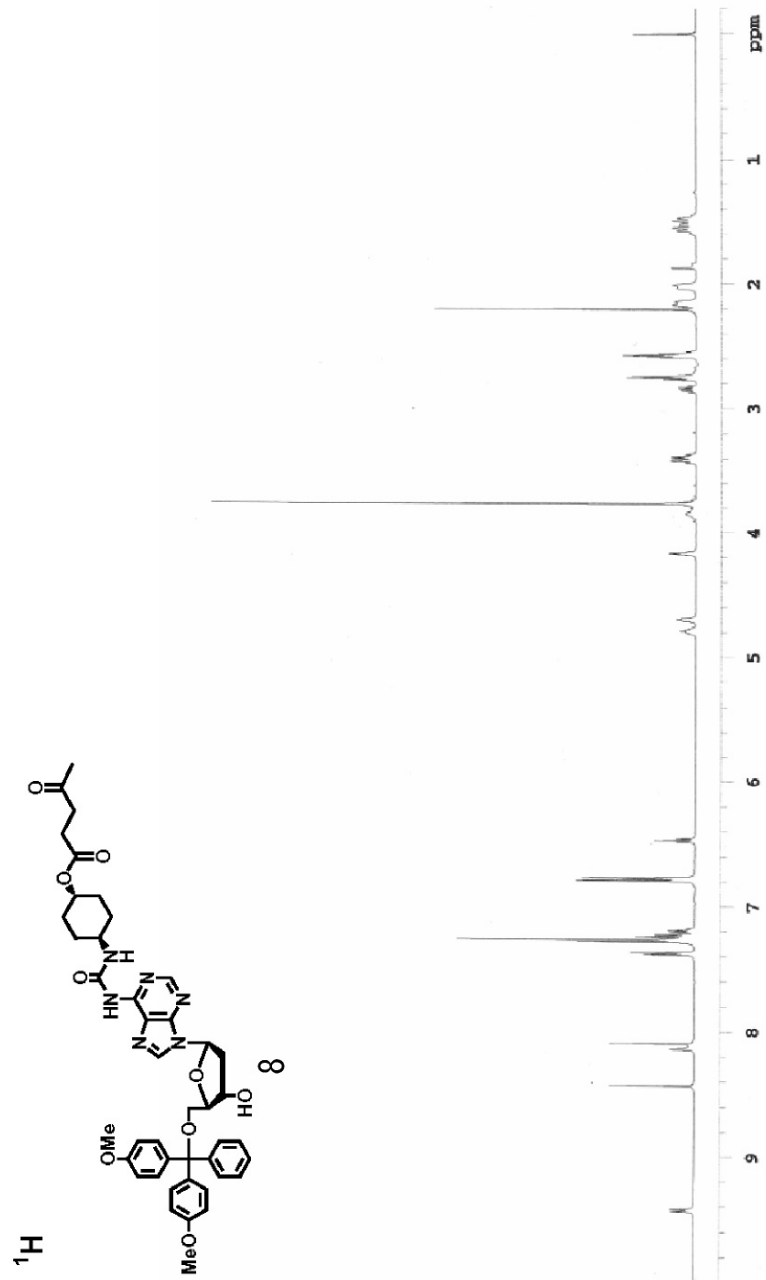


¹³C

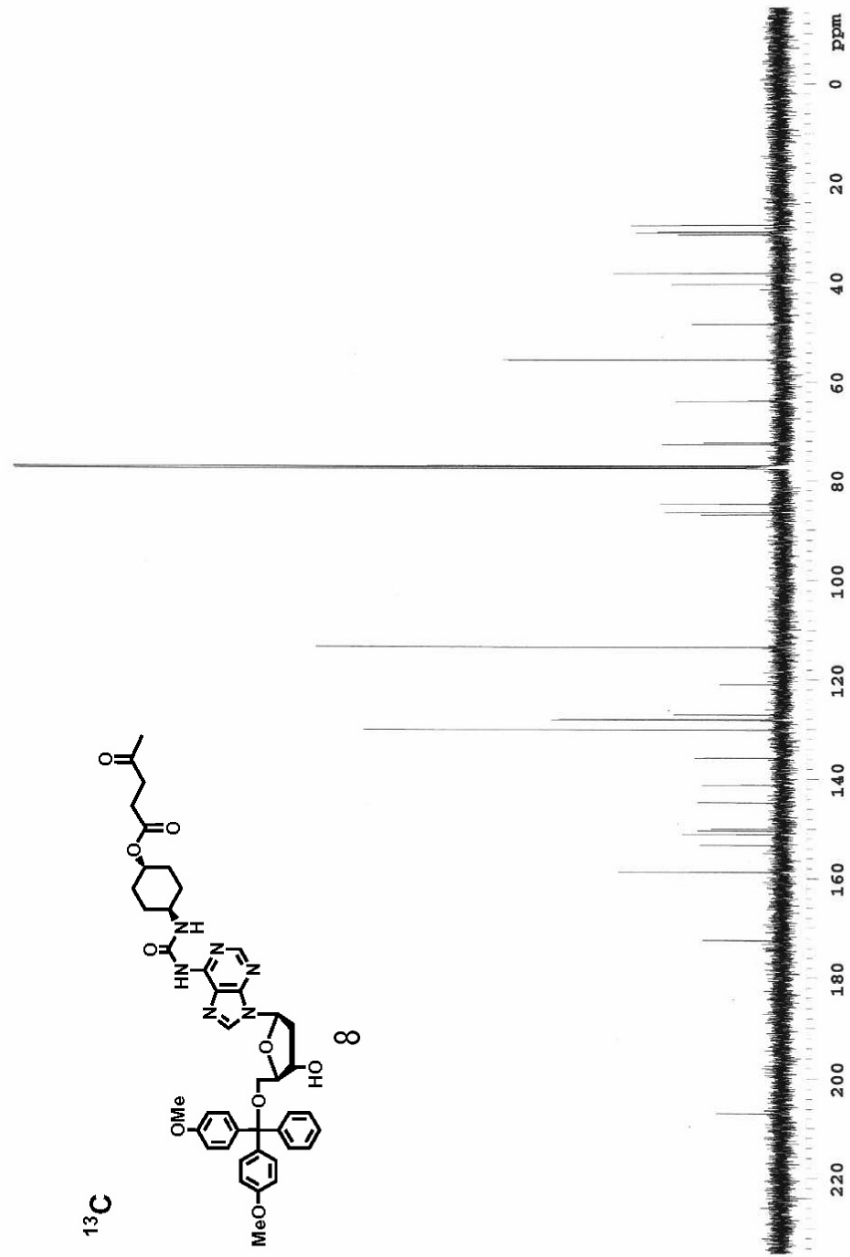
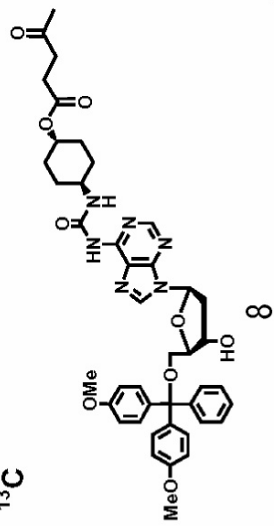








¹³C



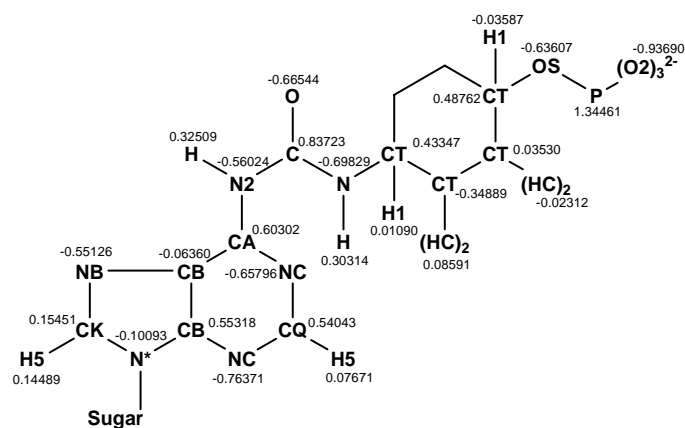


Fig. S1. Atom types and the atomic charges of the modified base incorporated to **probe7**

Table S1. Bond, angle and dihedral parameters for the modified base.

bond ^a	K_r (kcal mol ⁻¹ Å ⁻²)	r_{eq} (Å)	
N2-C	490.00	1.335	
angle ^b	K_θ (kcal mol ⁻¹ deg ⁻²)	θ_{eq} (deg)	
CA-N2-C	67.400	119.630	
N2-C-N	75.400	111.700	
N2-C-O	74.100	122.260	
H-N2-C	50.000	120.000	
dihedral ^c	V_n (kcal mol ⁻¹)	γ (deg)	n
CA-N2-C-N	10.000	180.0	2.0
CA-N2-C-O	10.000	180.0	2.0
H-N2-C-N	2.000	0.0	1.0
H-N2-C-O	2.000	0.0	1.0

a) $E_{\text{bond}} = K_r(r-r_{\text{eq}})^2$; b) $E_{\text{angle}} = K_\theta(\theta-\theta_{\text{eq}})^2$; c) $E_{\text{dihedral}} = 0.5V_n[1+\cos(n\phi-\gamma)]$

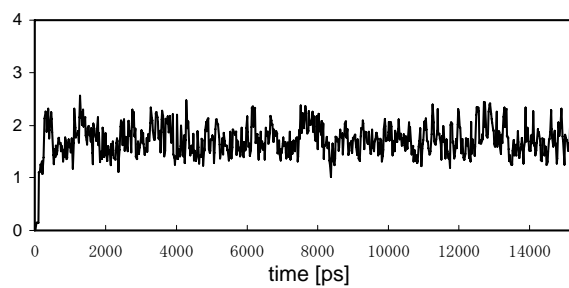


Fig. S2 RMS deviations (\AA) during the MD simulation