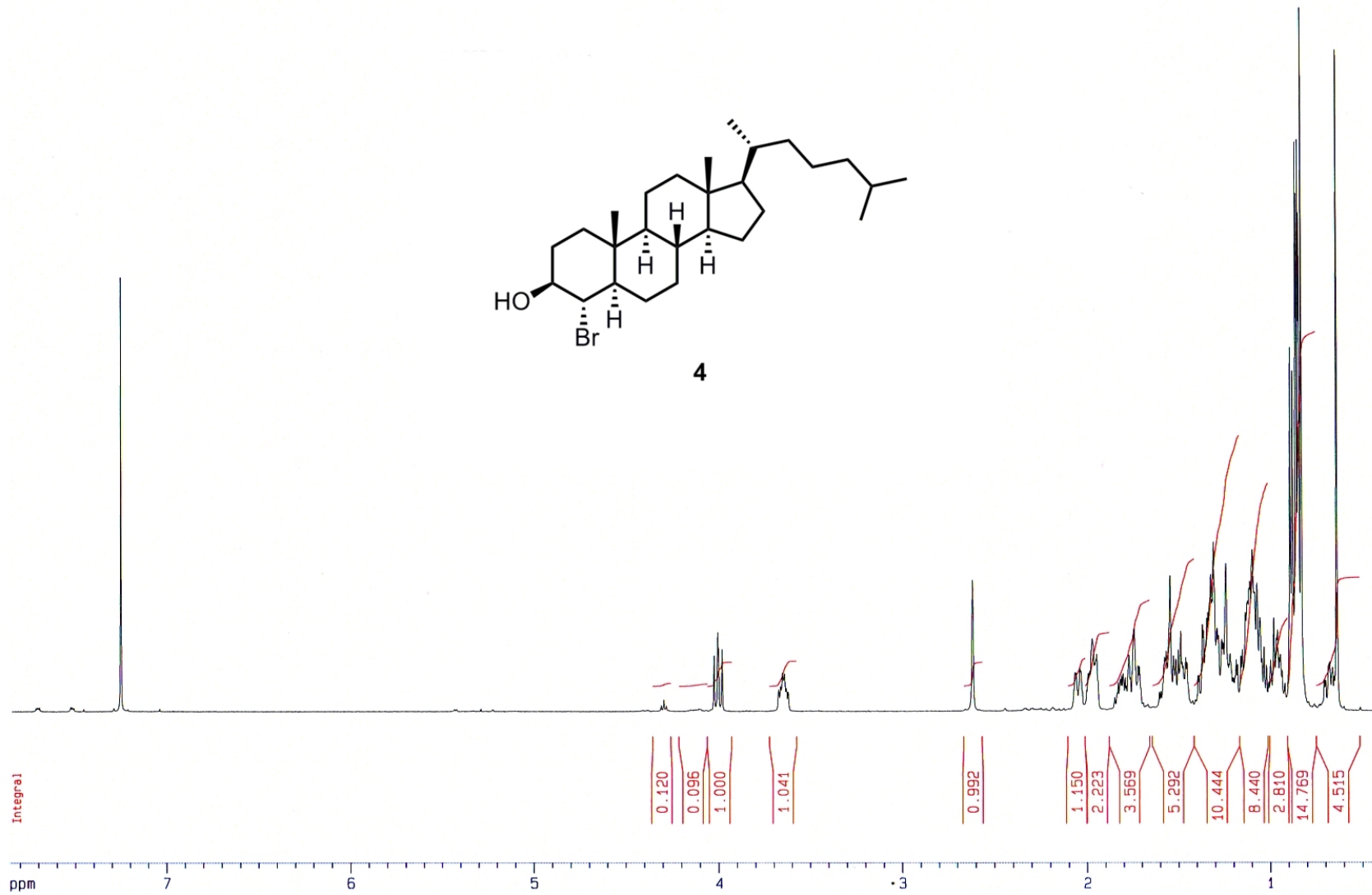
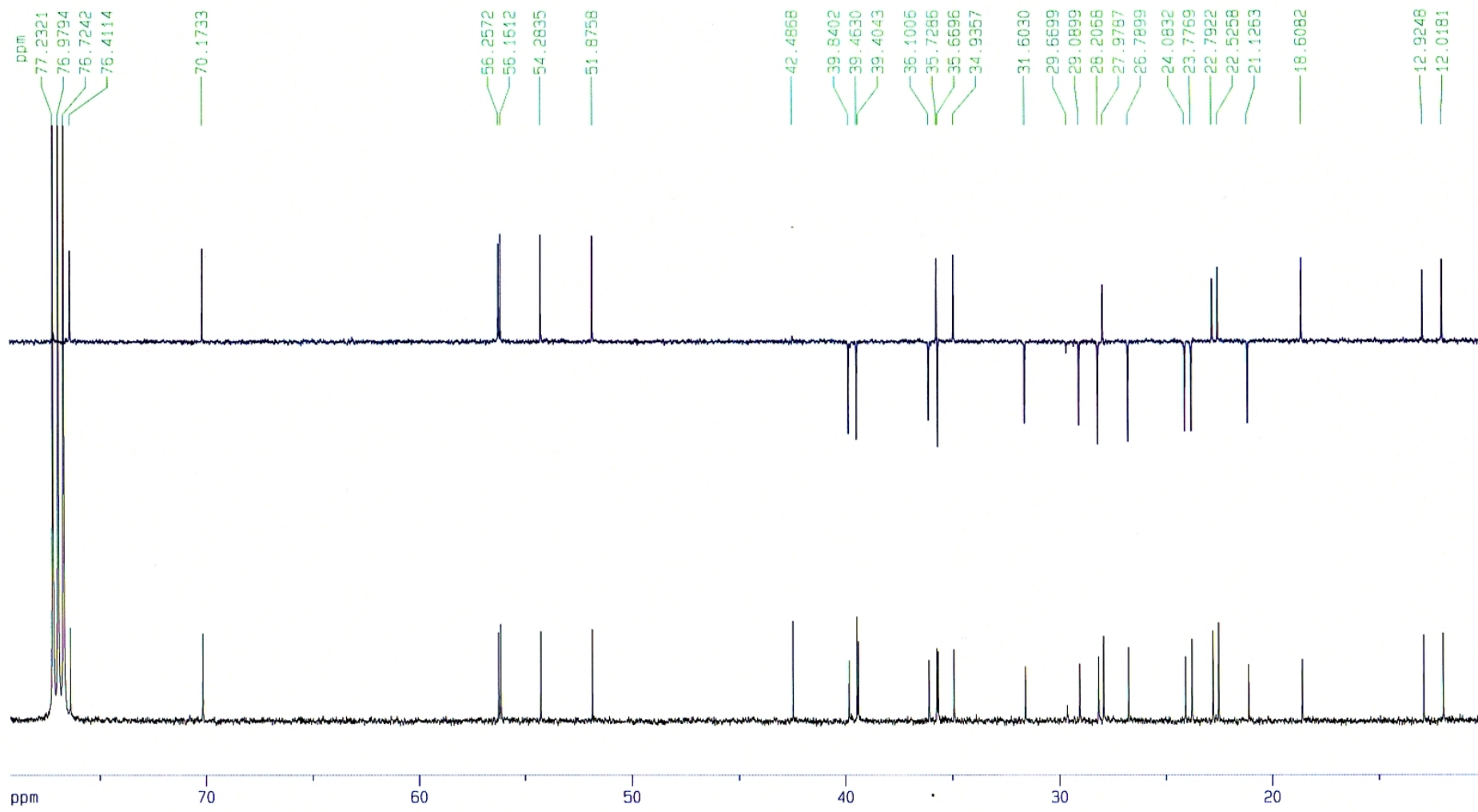


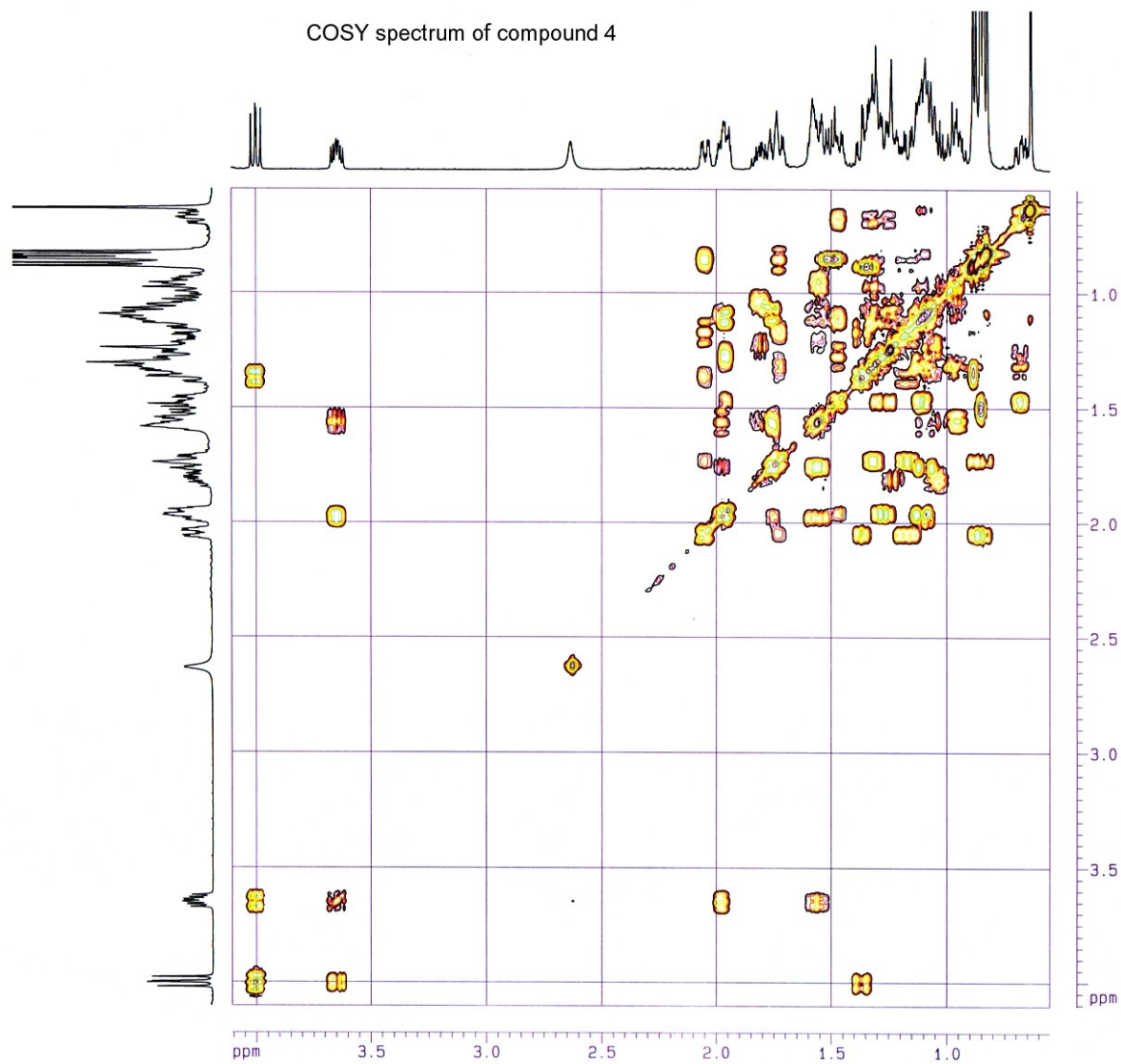
4



compound 4



COSY spectrum of compound 4



```

Current Data Parameters
NAME      RMB672
EXPNO    13
PROCNO    1

F2 - Acquisition Parameters
Date_     20080727
Time      16.17
INSTRUM   spect
PROBHD    5 mm BBO multi
PULPROG   cosygs
TD         2048
SOLVENT   CDCl3
NS         8
DS         4
SWH        5000.000 Hz
FIDRES     2.441406 Hz
AQ         0.2048500 sec
RG         322.5
DM         100.000 usec
DE         6.00 usec
TE         295.0 K
DO         0.0000300 sec
D1         1.48689198 sec
D13        0.0000300 sec
D16        0.0002000 sec
IN0        0.00019995 sec

----- CHANNEL f1 -----
NUC1       1H
PO         9.50 usec
P1         9.50 usec
PL1        0.00 dB
SF01       500.1325006 MHz

----- GRADIENT CHANNEL -----
P16        1000.00 usec

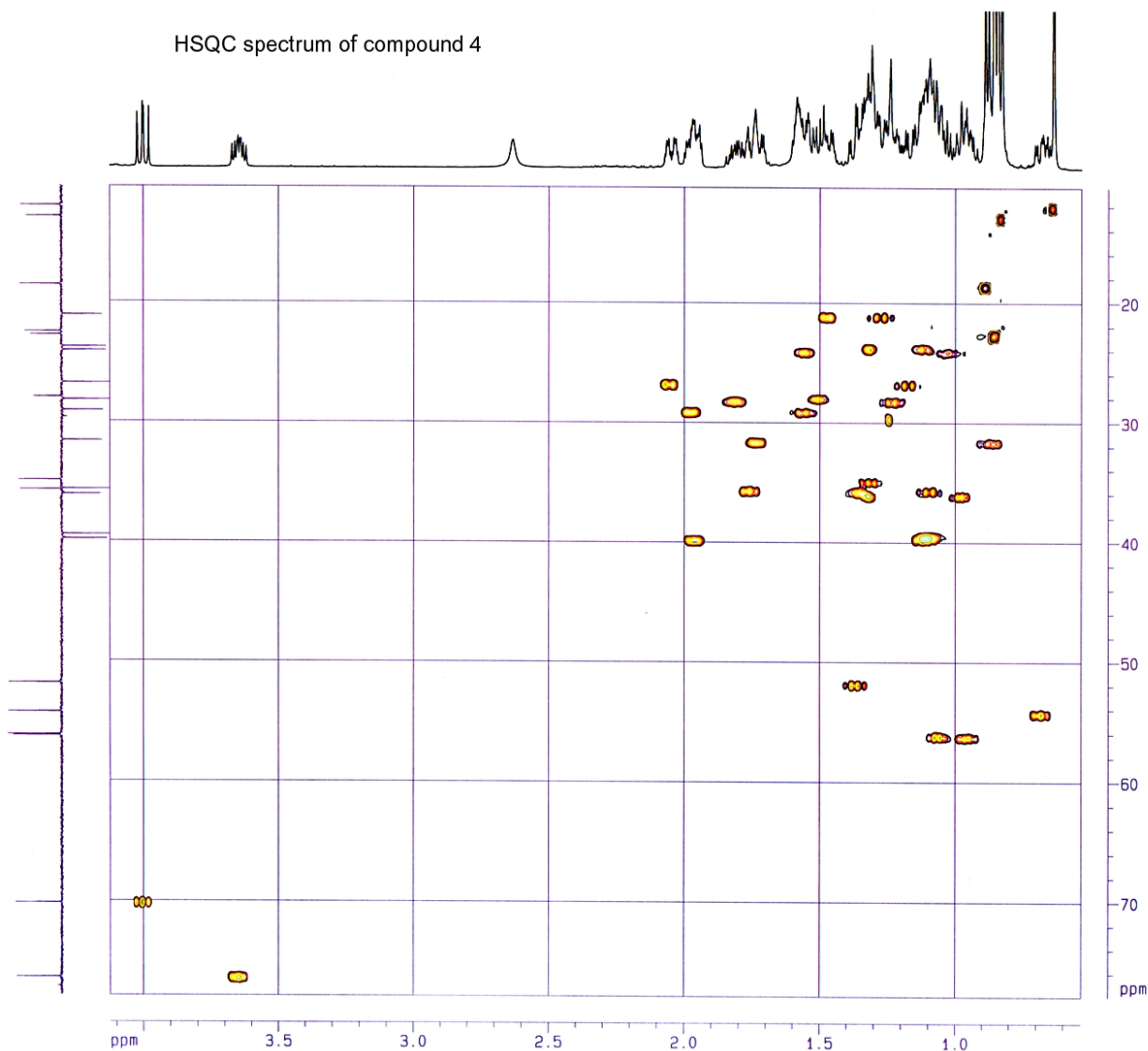
F1 - Acquisition parameters
ND0        1
TD         400
SF01       500.1325 MHz
FIDRES     12.503126 Hz
SM         10.000 ppm

F2 - Processing parameters
SI         1024
SF         500.1300224 MHz
WDW        SINE
SSB        0
LB         0.00 Hz
GB         0
PC         1.40

F1 - Processing parameters
SI         1024
MC2        OF
SF         500.1300226 MHz
WDW        SINE
SSB        0
LB         0.00 Hz
GB         0

2D NMR plot parameters
CX2        15.00 cm
CX1        15.00 cm
F2PLO      4.106 ppm
F2L0       2053.46 Hz
F2PHI      0.552 ppm
F2H1       276.12 Hz
F1PLO      4.106 ppm
F1L0       2053.12 Hz
F1PHI      0.551 ppm
F1H1       275.33 Hz
F2PPMCM    0.23692 ppm/cm
F2HZCM     118.48959 Hz/cm
F1PPMCM    0.23698 ppm/cm
F1HZCM     118.51921 Hz/cm
    
```

HSQC spectrum of compound 4



```

Current Data Parameters
NAME          RM872
EXPNO        14
PROCNO       1

F2 - Acquisition Parameters
Date_        20080804
Time         11.39
INSTRUM      spect
PROBHD       5 mm BBO mmt1
PULPROG      invgtp0
TD           2048
SOLVENT      CDCl3
NS           4
DS           8
SWH          5482.456 Hz
FIDRES       2.676980 Hz
AQ           0.1866276 sec
RG           9195.2
DM           91.200 usec
DE           6.00 usec
TE           299.5 K
D0           0.0000300 sec
D1           2.0000000 sec
D4           0.00172500 sec
D11          0.03000000 sec
D13          0.0000300 sec
D18          0.00020000 sec
d20          0.00120000 sec
d21          0.00051800 sec
IN0          0.00001190 sec

----- CHANNEL f1 -----
NUC1         1H
P1           9.50 usec
P2           19.00 usec
PL1          0.00 dB
SF01         500.1325006 MHz

----- CHANNEL f2 -----
CPDPRG2      gpr0
NUC2         13C
P3           7.40 usec
P4           14.80 usec
PCPD2        80.00 usec
PL2          2.00 dB
PL12         14.00 dB
SF02         125.7671198 MHz

----- GRADIENT CHANNEL -----
P16          1000.00 usec

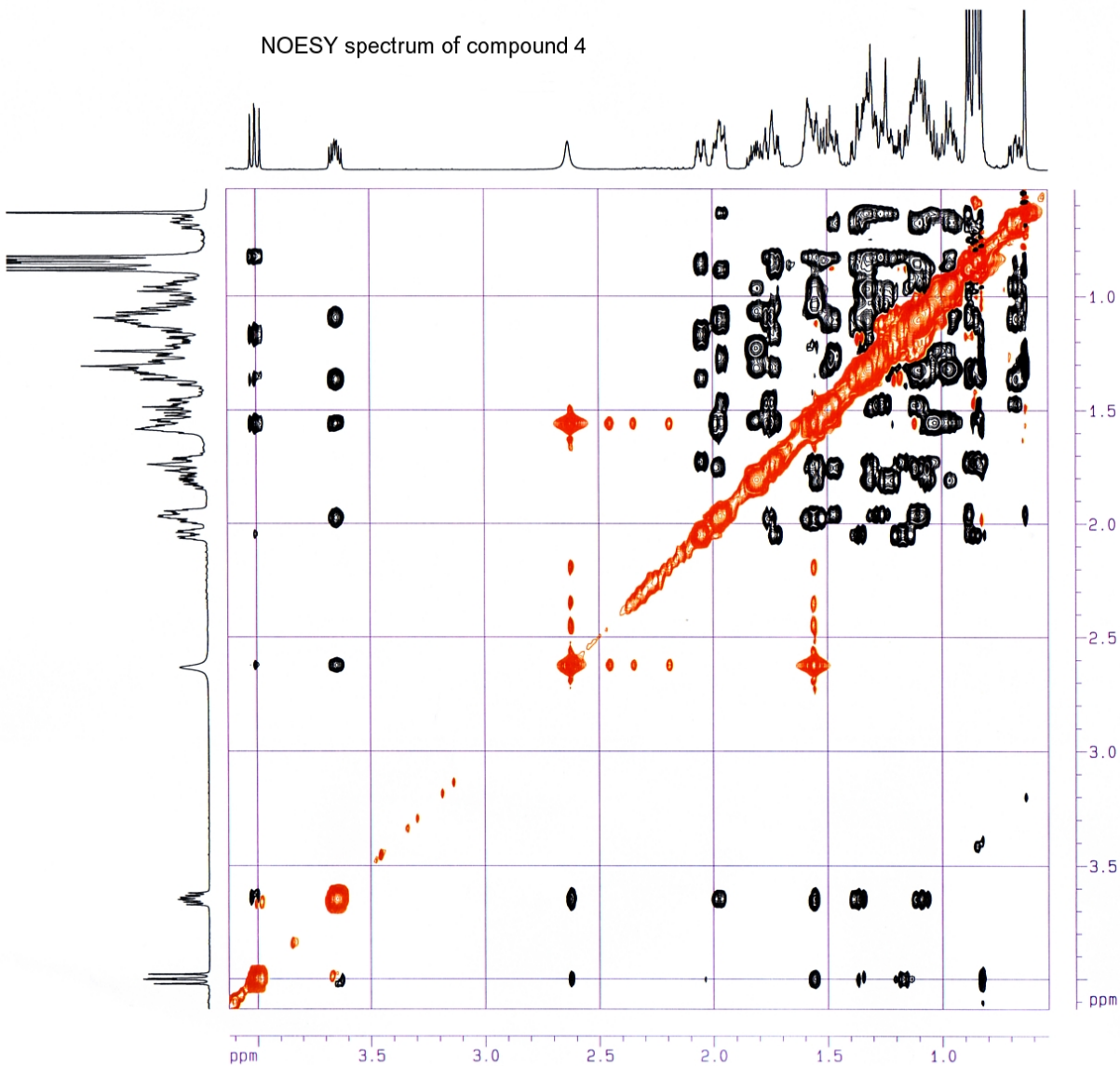
F1 - Acquisition parameters
ND0          4
TD           250
SF01         125.7671 MHz
FIDRES       60.024010 Hz
SW           167.042 ppm

F2 - Processing parameters
SI           2048
SF           500.1300232 MHz
WDW          GSIINE
SSB          3
LB           0.00 Hz
GB           0
PC           1.40

F1 - Processing parameters
SI           1024
MC2          TPPI
SF           125.7577987 MHz
WDW          GSIINE
SSB          3
LB           0.00 Hz
GB           0

2D NMR plot parameters
CX2          18.00 cm
CX1          15.00 cm
F2PLD        4.124 ppm
F2LO         2062.50 Hz
F2PHI        0.532 ppm
F2H1         266.25 Hz
F1PLD        77.952 ppm
F1LO         9803.05 Hz
F1PHI        10.412 ppm
F1H1         1309.42 Hz
F2PPNCH      0.19953 ppm/cm
F2HZCH       99.79189 Hz/cm
F1PPNCH      4.50264 ppm/cm
F1HZCH       566.24213 Hz/cm
    
```

NOESY spectrum of compound 4



```

Current Data Parameters
NAME          RM072
EXPNO        16
PROCNO       1

F2 - Acquisition Parameters
Date_        20080727
Time         17.05
INSTRUM      spect
PROBHD       5 mm BBO mult1
PULPROG      noesygptp
TD           2048
SOLVENT      CDCl3
NS           16
DS           4
SMH          5122.951 Hz
FIDRES       2.501441 Hz
AQ           0.1999348 sec
RG           40
DM           97.600 usec
DE           5.00 usec
TE           294.9 K
D0           0.00000300 sec
D1           2.00000000 sec
D6           0.80000001 sec
D16          0.00020000 sec
d20          0.39880002 sec
IN0          0.00009750 sec

----- CHANNEL f1 -----
NUC1         1H
P1           9.50 usec
P2           19.00 usec
PL1          0.00 dB
SFO1         500.1323022 MHz

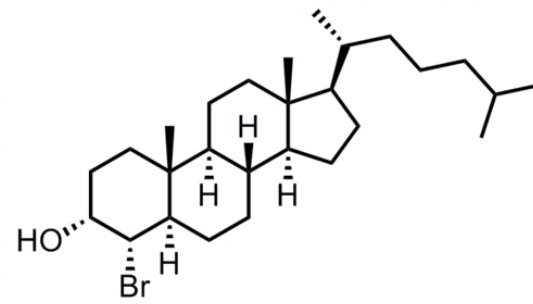
----- GRADIENT CHANNEL -----
GPNAM1       sine.100
GPNAM2       sine.100
GPX1         0.00 %
GPX2         0.00 %
GPY1         0.00 %
GPY2         0.00 %
GPZ1         40.00 %
GPZ2         -40.00 %
P16          1000.00 usec

F1 - Acquisition parameters
ND0          2
TD           350
SFO1         500.1323 MHz
FIDRES       14.652015 Hz
SM           10.254 ppm

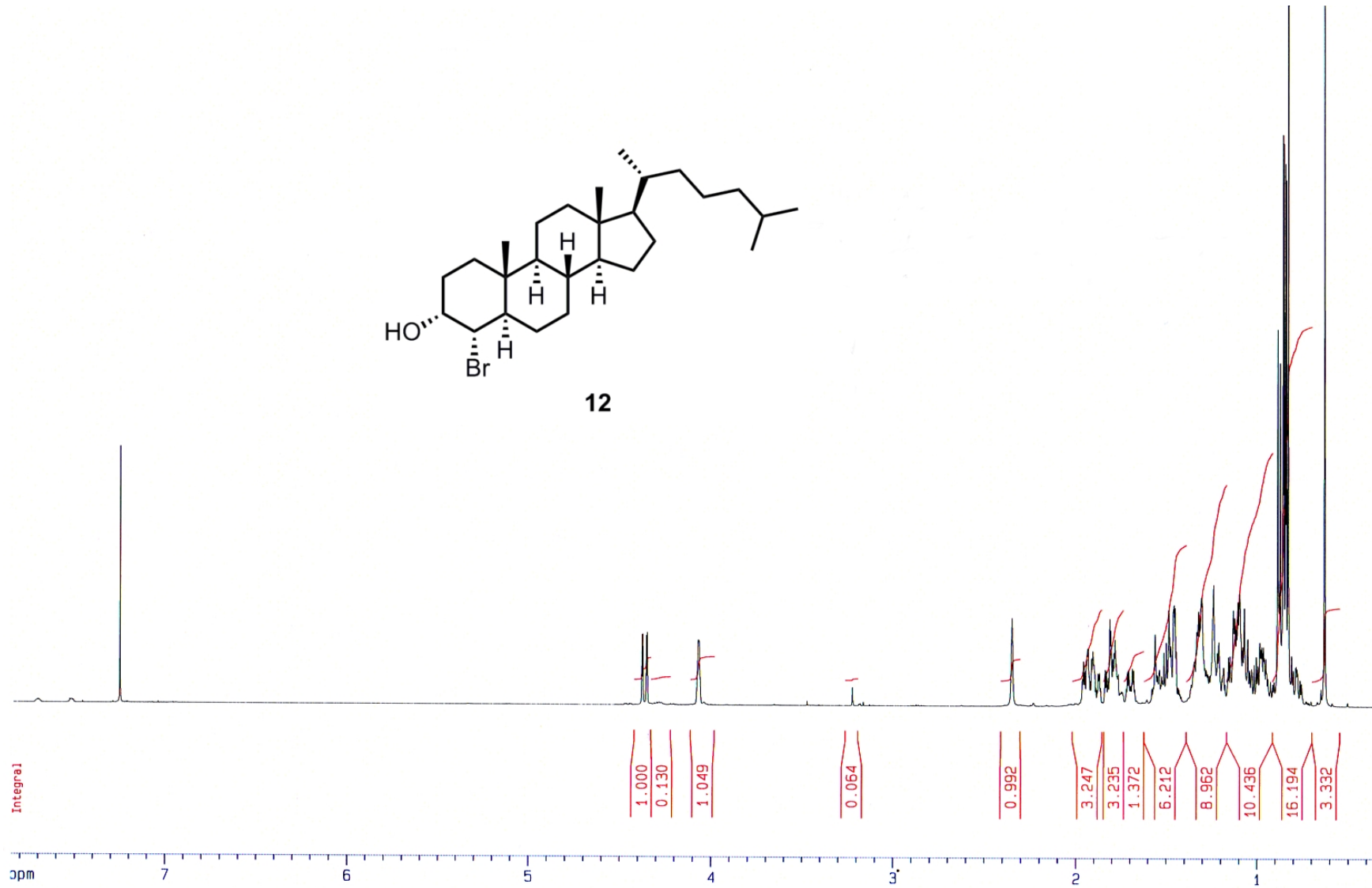
F2 - Processing parameters
SI           1024
SF           500.1300233 MHz
WDW          05SINE
SSB          2
LB           0.00 Hz
GB           0
PC           1.40

F1 - Processing parameters
SI           1024
MC2          1091
SF           500.1300233 MHz
WDW          05SINE
SSB          2
LB           0.00 Hz
GB           0

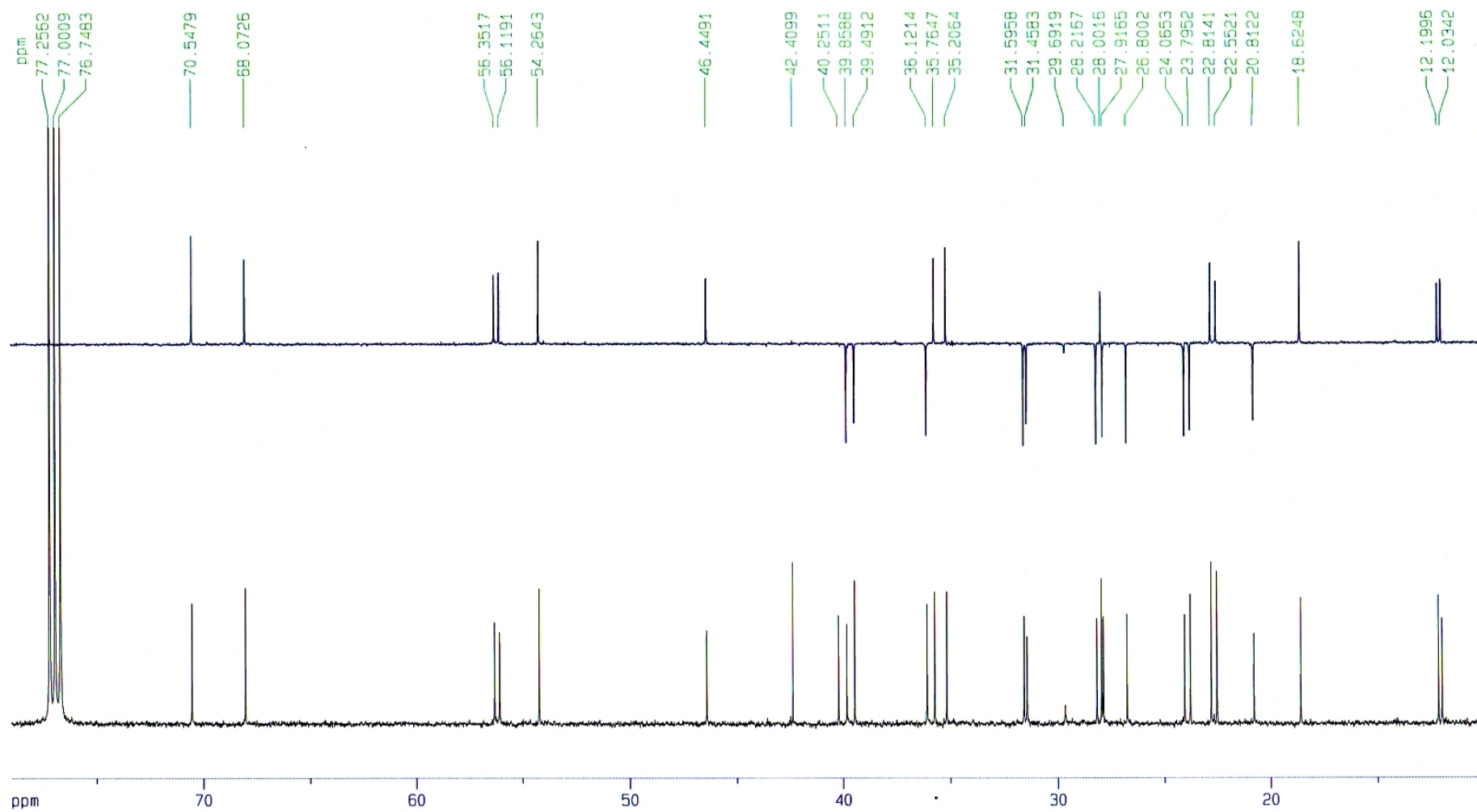
2D NMR plot parameters
CX2          15.00 cm
CX1          15.00 cm
F2PLO       4.126 ppm
F2L0         2063.77 Hz
F2PHI       0.535 ppm
F2H1         267.73 Hz
F1PLO       4.135 ppm
F1L0         2067.96 Hz
F1PHI       0.530 ppm
F1H1         265.00 Hz
F2PMCM      0.23941 ppm/cm
F2HZCM      119.73563 Hz/cm
F1PMCM      0.24032 ppm/cm
F1HZCM      120.19231 Hz/cm
    
```

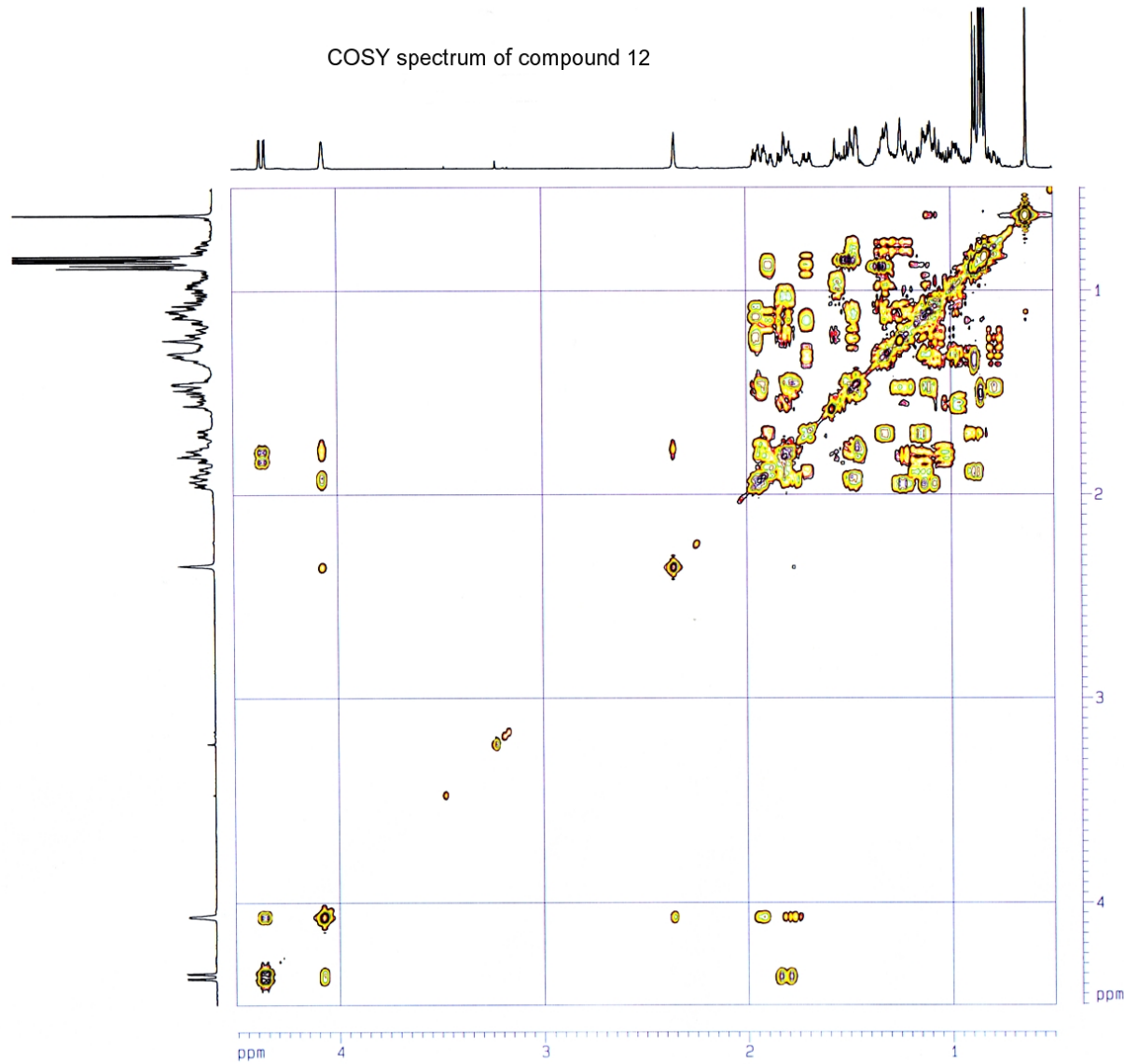
12



compound 12



COSY spectrum of compound 12



```

Current Data Parameters
NAME      RM8671
EXPNO    13
PROCNO    1

F2 - Acquisition Parameters
Date_     20080728
Time      1.05
INSTRUM   spect
PROBHD    5 mm BBO multi
PULPROG   cosygs
TD        2048
SOLVENT   CDCl3
NS         4
DS         8
SWH        5000.000 Hz
FIDRES     2.441406 Hz
AQ         0.2048500 sec
RG         181
DM         100.000 usec
DE         5.00 usec
TE         294.8 K
D0         0.0000300 sec
D1         1.48689198 sec
D13        0.0000300 sec
D16        0.0002000 sec
INO        0.00019895 sec

----- CHANNEL f1 -----
NUC1       1H
P0         9.50 usec
P1         9.50 usec
PL1        0.00 dB
SF01       500.1325006 MHz

----- GRADIENT CHANNEL -----
P16        1000.00 usec

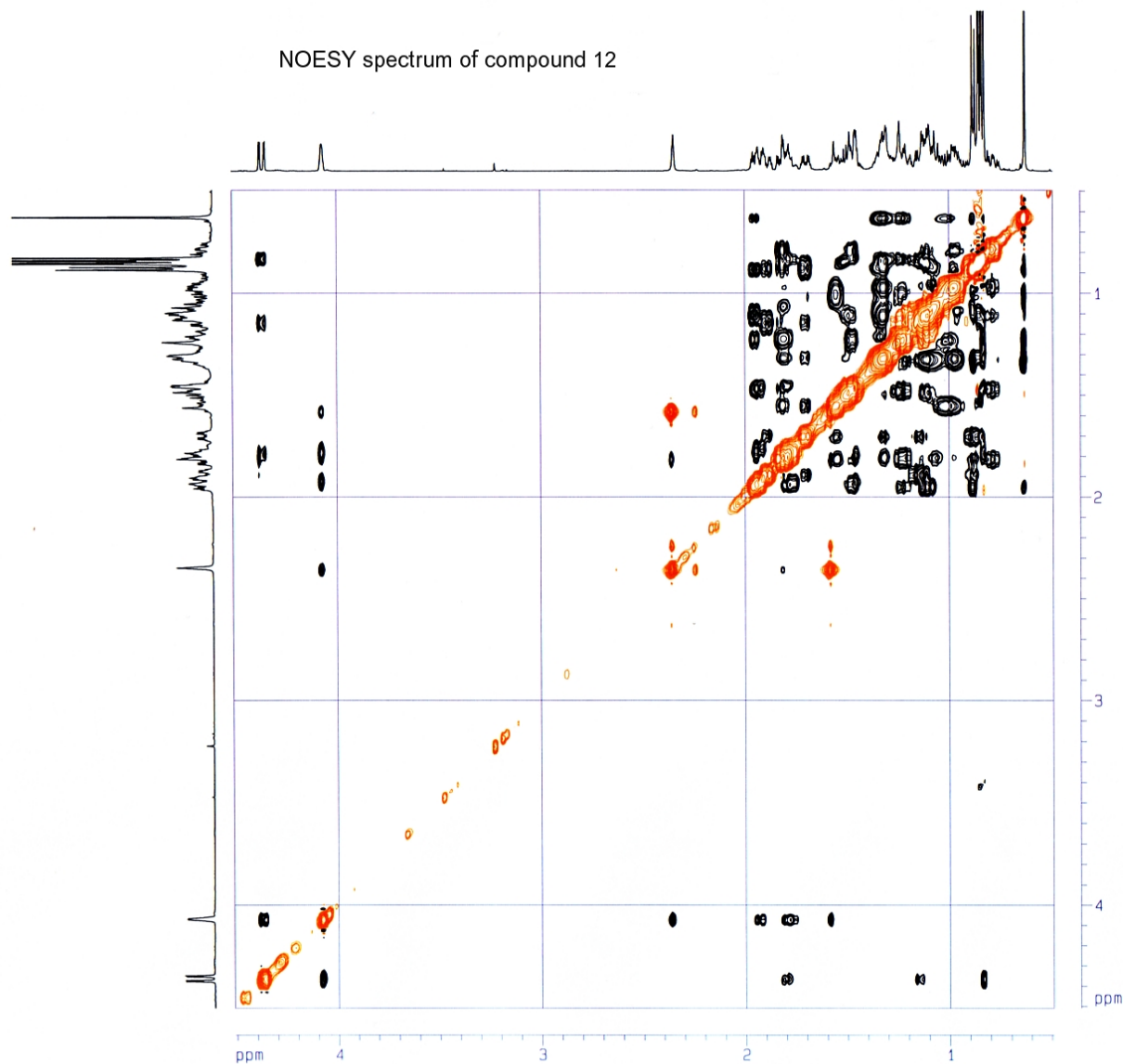
F1 - Acquisition parameters
ND0        1
TD         400
SF01       500.1325 MHz
FIDRES     12.503126 Hz
SW         10.000 ppm

F2 - Processing parameters
SI         1024
SF         500.1300207 MHz
WDW        SINE
SSB        0
LB         0.00 Hz
GB         0
PC         1.40

F1 - Processing parameters
SI         1024
MC2        0F
SF         500.1300218 MHz
WDW        SINE
SSB        0
LB         0.00 Hz
GB         0

2D NMR plot parameters
CX2        15.00 cm
CX1        15.00 cm
F2PLO     4.510 ppm
F2LO      2255.36 Hz
F2PHI     0.497 ppm
F2HI      246.52 Hz
F1PLO     4.507 ppm
F1LO      2254.22 Hz
F1PHI     0.494 ppm
F1HI      246.88 Hz
F2PRMCM   0.26751 ppm/cm
F2HZCM    133.78908 Hz/cm
F1PRMCM   0.26758 ppm/cm
F1HZCM    133.82253 Hz/cm
    
```


NOESY spectrum of compound 12



```

Current Data Parameters
NAME      RMB671
EXPNO    16
PROCNO   1

F2 - Acquisition Parameters
Date_    20080728
Time     1.54
INSTRUM  spect
PROBHD   5 mm BBO mlt11
PULPROG  noesygptb
TD        2048
SOLVENT  CDCl3
NS        16
DS        4
SWH       5122.951 Hz
FIDRES   2.501441 Hz
AQ        0.1999348 sec
RG         40
DM        97.600 usec
DE         5.00 usec
TE        294.7 K
D0         0.00000300 sec
D1         2.00000000 sec
D8         0.80000001 sec
D16        0.00020000 sec
d20        0.39880002 sec
IN0        0.00000750 sec

----- CHANNEL f1 -----
NUC1      1H
P1         9.50 usec
P2        19.00 usec
PL1        0.00 dB
SFO1      500.1323022 MHz

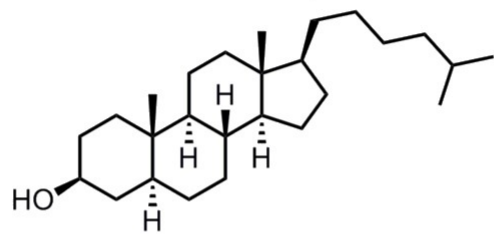
----- GRADIENT CHANNEL -----
GPNAM1    sine 100
GPNAM2    sine 100
GFX1      0.00 X
GFX2      0.00 X
GPY1      0.00 X
GPY2      0.00 X
GPT1      40.00 X
GPT2     -40.00 X
P16       1000.00 usec

F1 - Acquisition parameters
ND0        2
TD         350
SFO1      500.1323 MHz
FIDRES    14.652015 Hz
SM        10.254 ppm

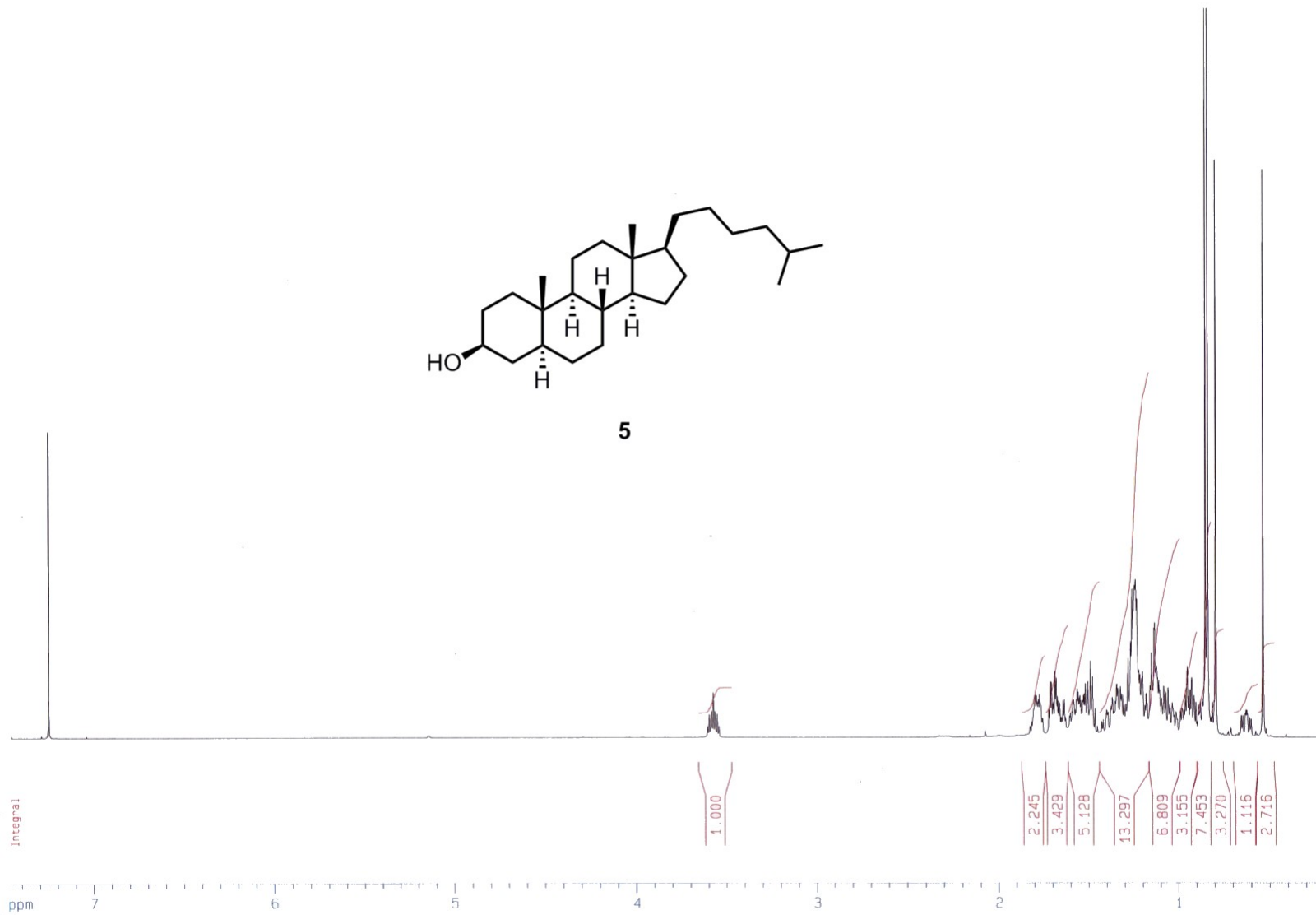
F2 - Processing parameters
SI         1024
SF        500.1300205 MHz
WDW        QSINE
SSB         2
LB          0.00 Hz
GB          0
PC          1.40

F1 - Processing parameters
SI         1024
MC2        TPPI
SF        500.1300212 MHz
WDW        QSINE
SSB         2
LB          0.00 Hz
GB          0

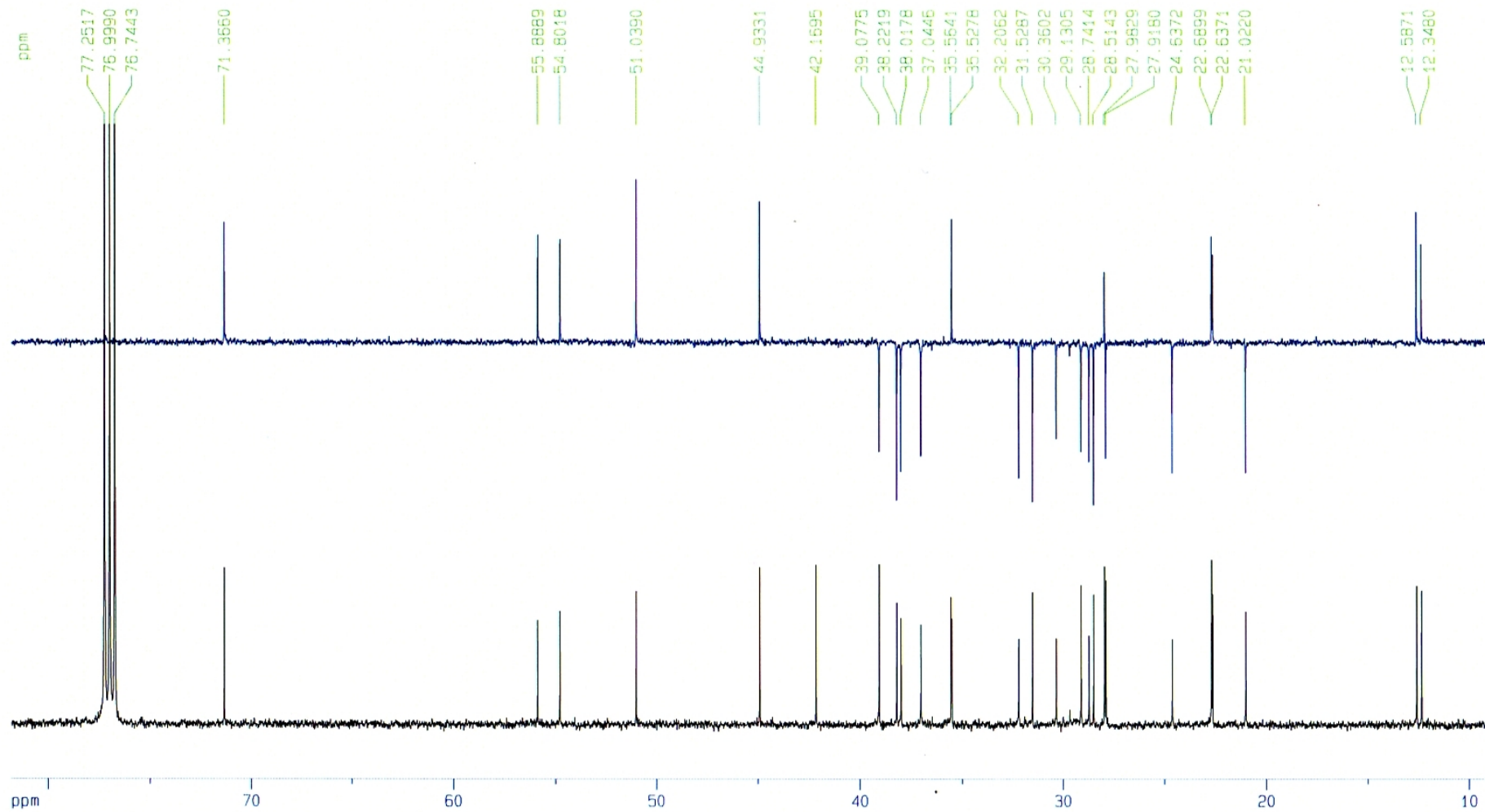
2D NMR plot parameters
CX2        15.00 cm
CX4        15.00 cm
F2PLO      4.512 ppm
F2LO       2256.67 Hz
F2PHI      0.491 ppm
F2PI       245.51 Hz
F1PLO      4.511 ppm
F1LO       2255.94 Hz
F1PHI      0.495 ppm
F1PI       247.72 Hz
F2PPMCM    0.26808 ppm/cm
F2HZCM     134.07724 Hz/cm
F1PPMCM    0.26769 ppm/cm
F1HZCM     133.88089 Hz/cm
    
```

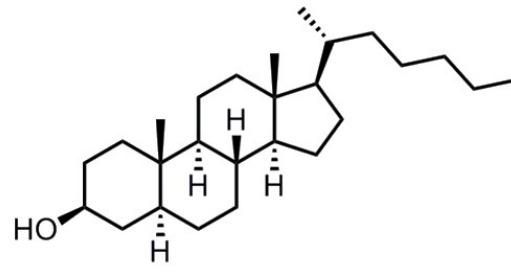


5

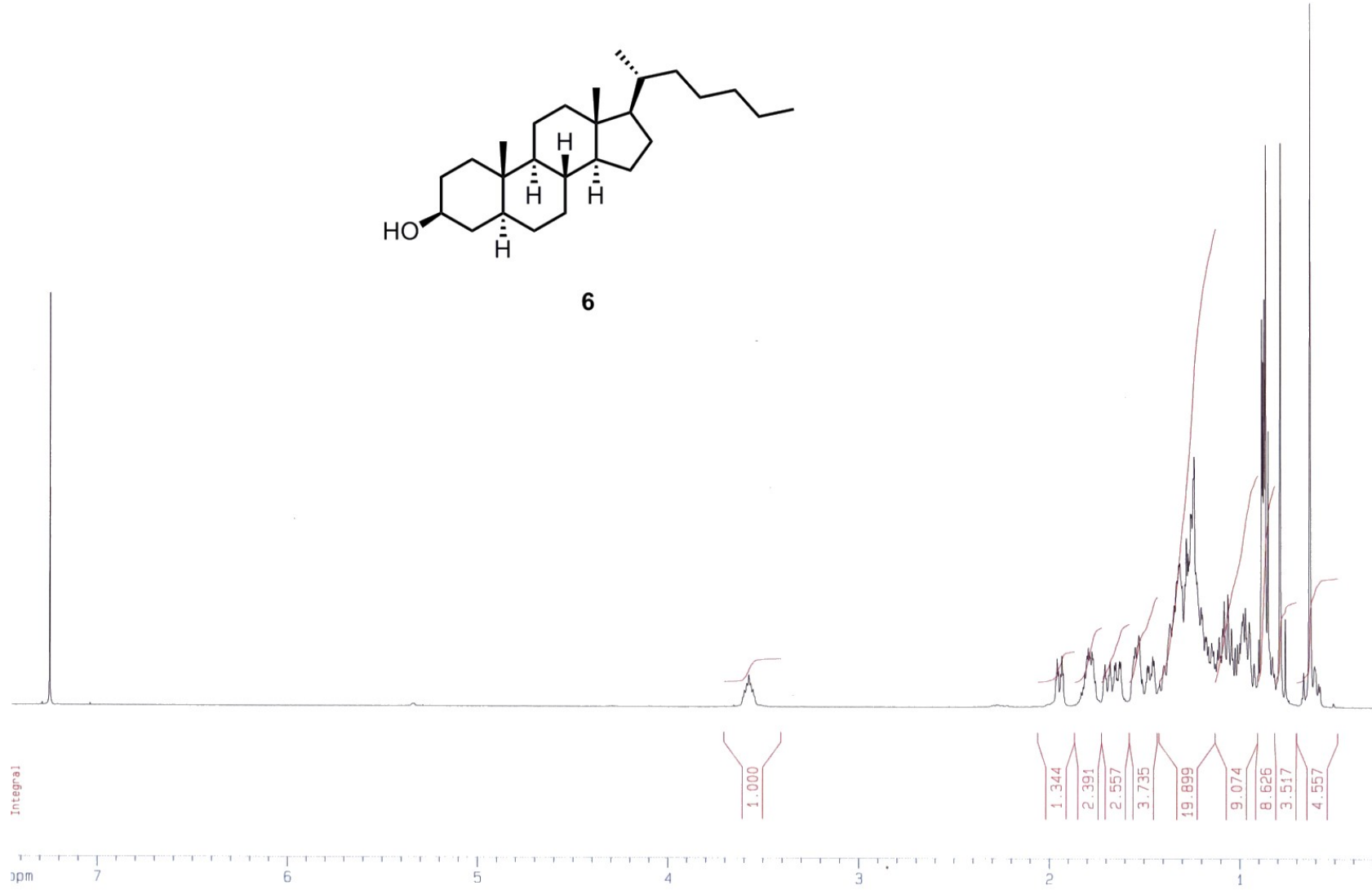


compound 5

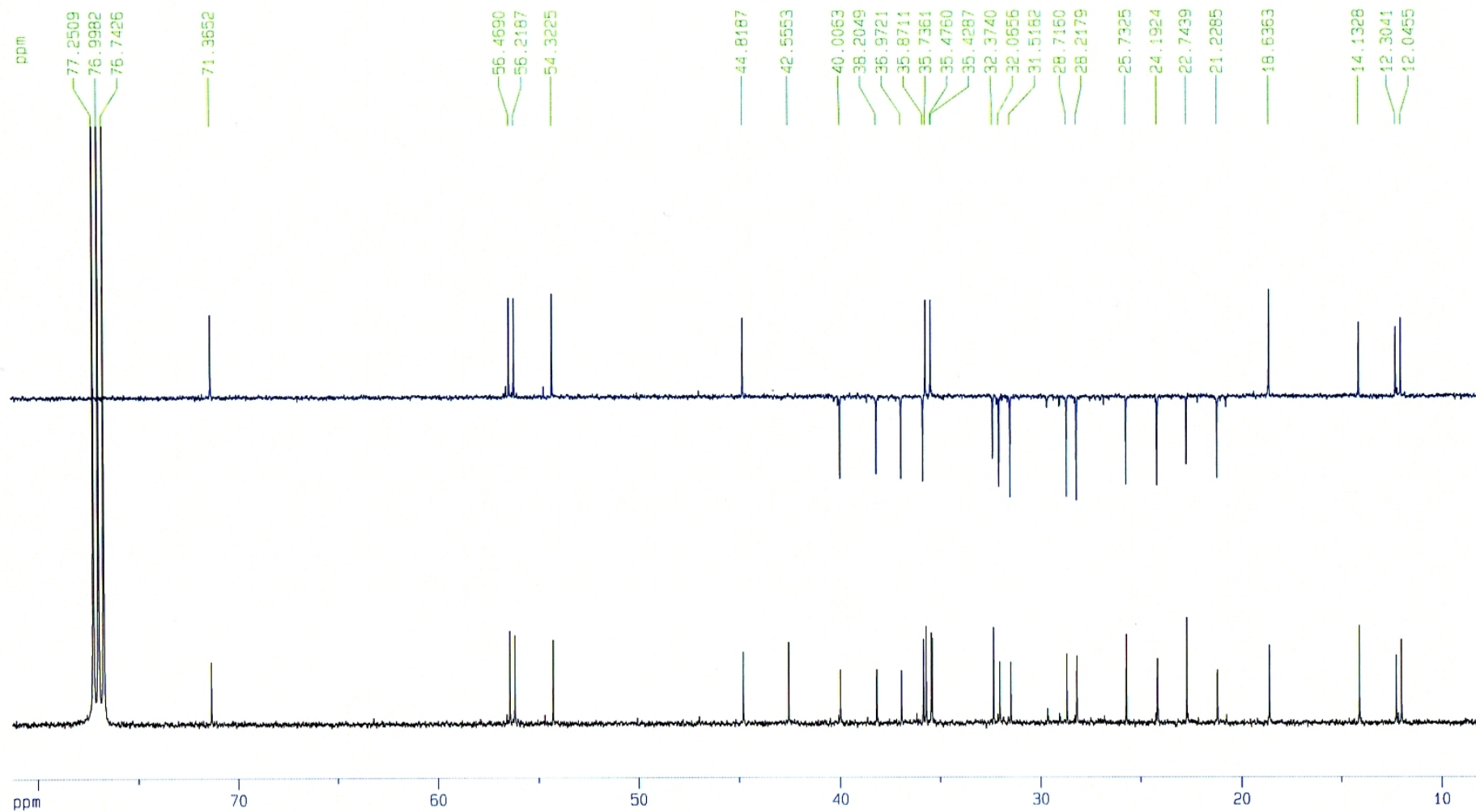


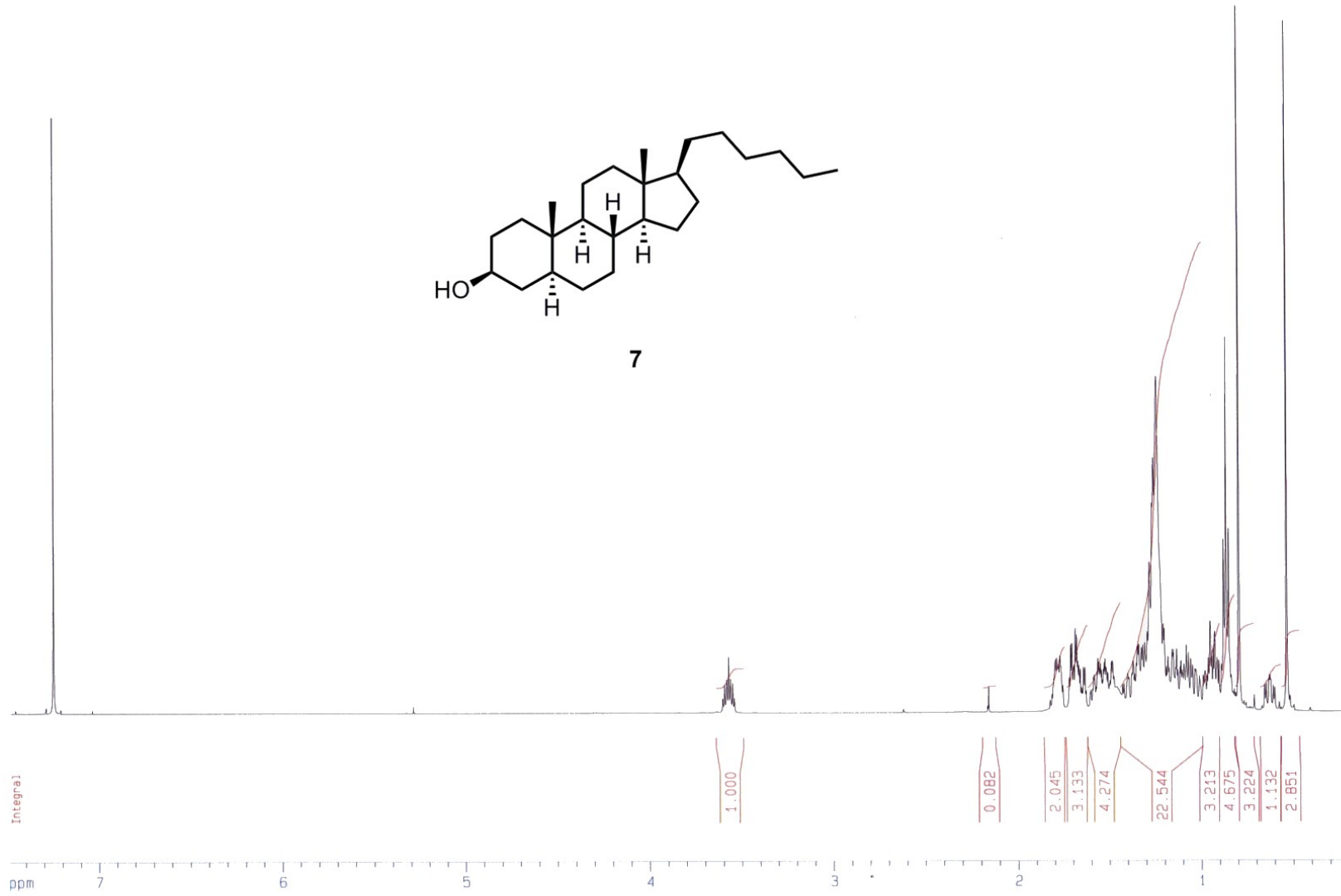
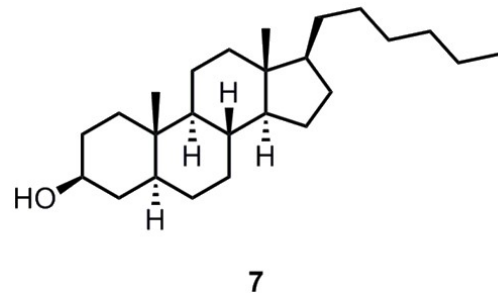


6



compound 6





compound 7

