

Supporting Information

Practical synthesis of maleimides and coumarin-linked probes for protein and antibody labelling via reduction of native disulfides

Hong Y. Song,^{a,b} Mun H. Ngai,^a Zhen Y. Song,^c Paul A. MacAry,^c Jonathan Hogley^b and Martin J. Lear^{*a}

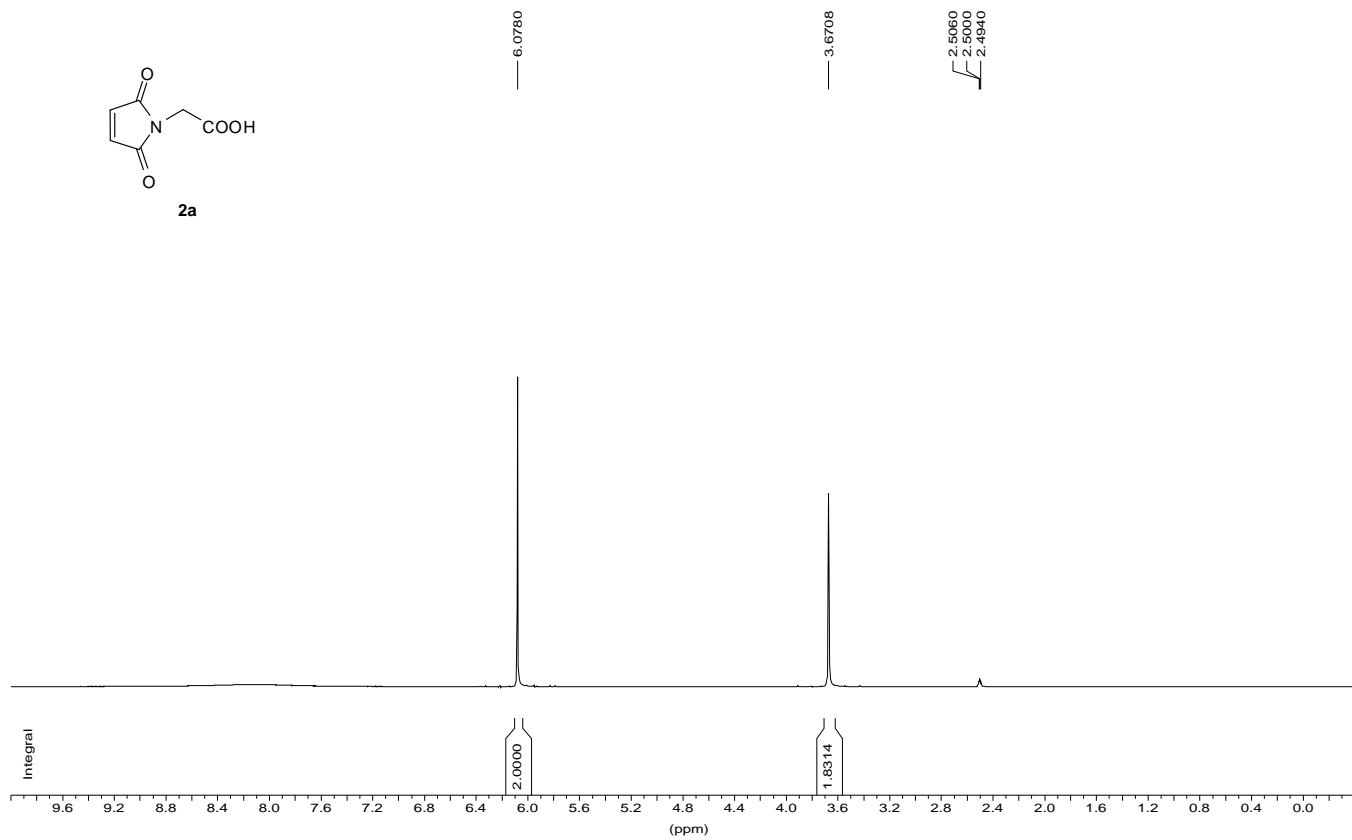
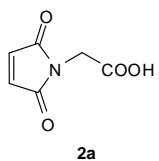
^a Department of Chemistry, and Medicinal Chemistry Program of the Life Sciences Institute, National University of Singapore, 3 Science Drive 3, Singapore 117543. E-mail: chmlmj@nus.edu.sg

^b Institute of Materials Research and Engineering, 3 Research Link, Singapore 117602

^c Immunology Programme, Centre for Life Sciences, National University of Singapore, 28 Medical Drive, Singapore 117456

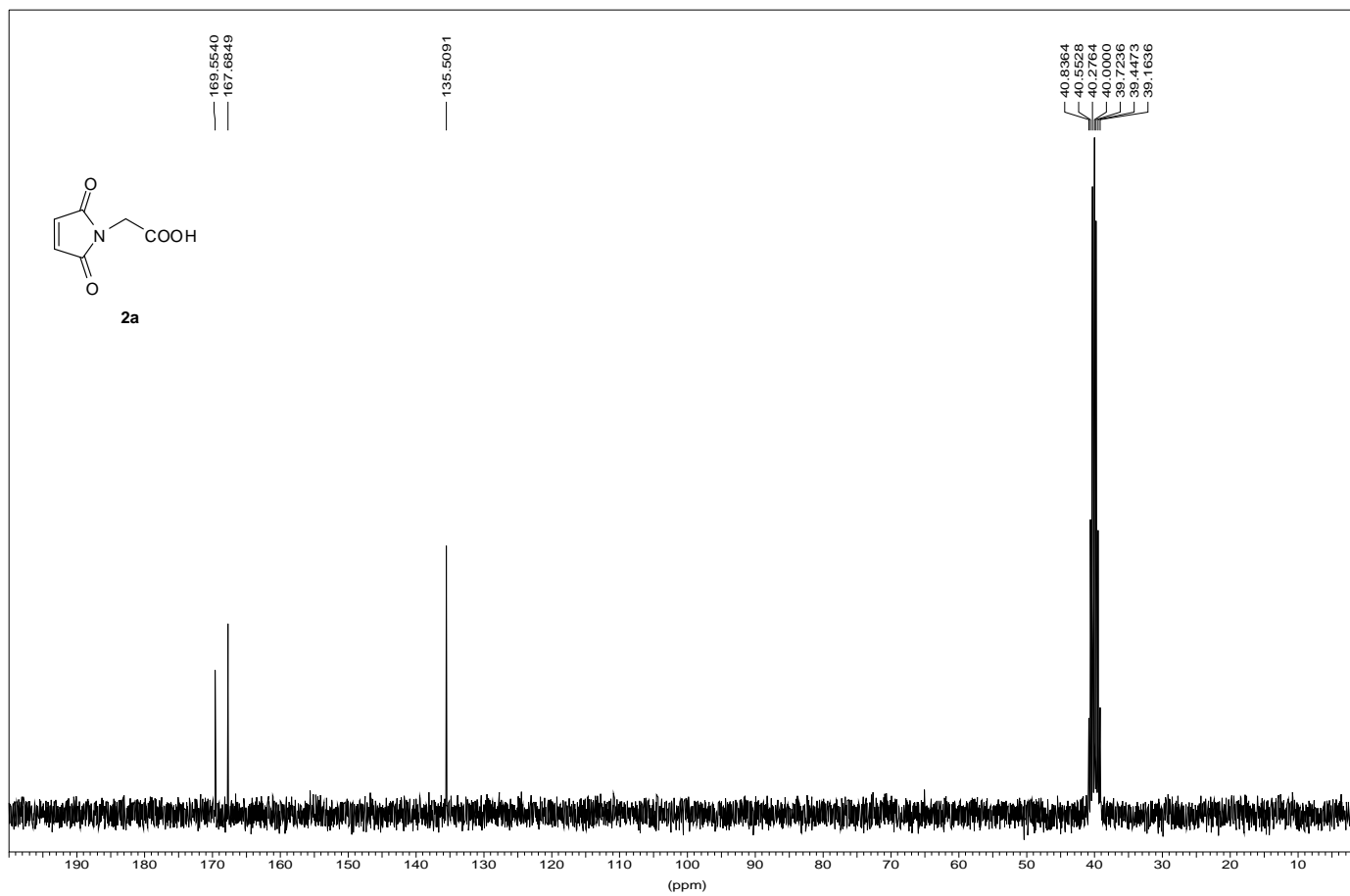
2a

ju211017.2



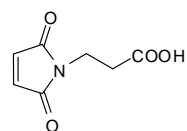
2a

ju201013.2

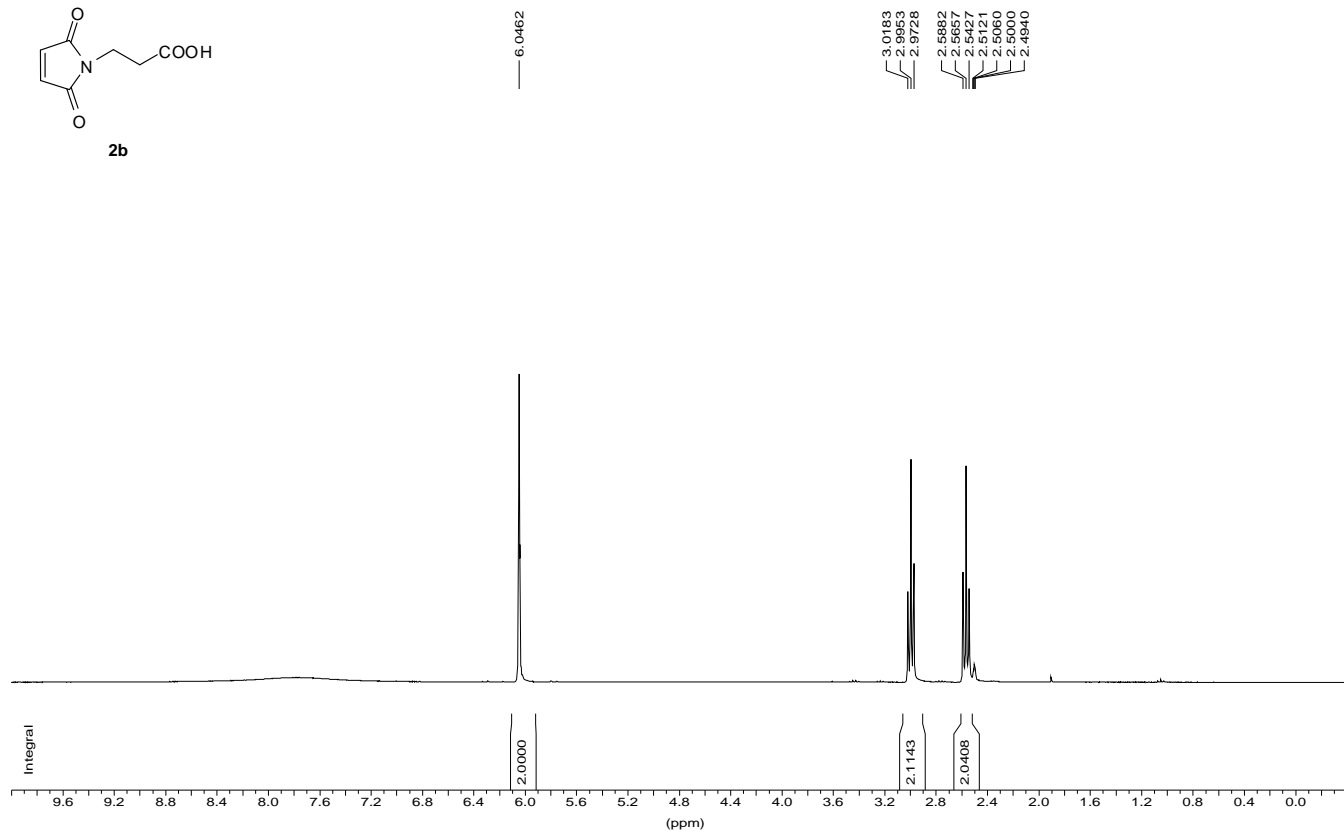


2b

ju231019.3

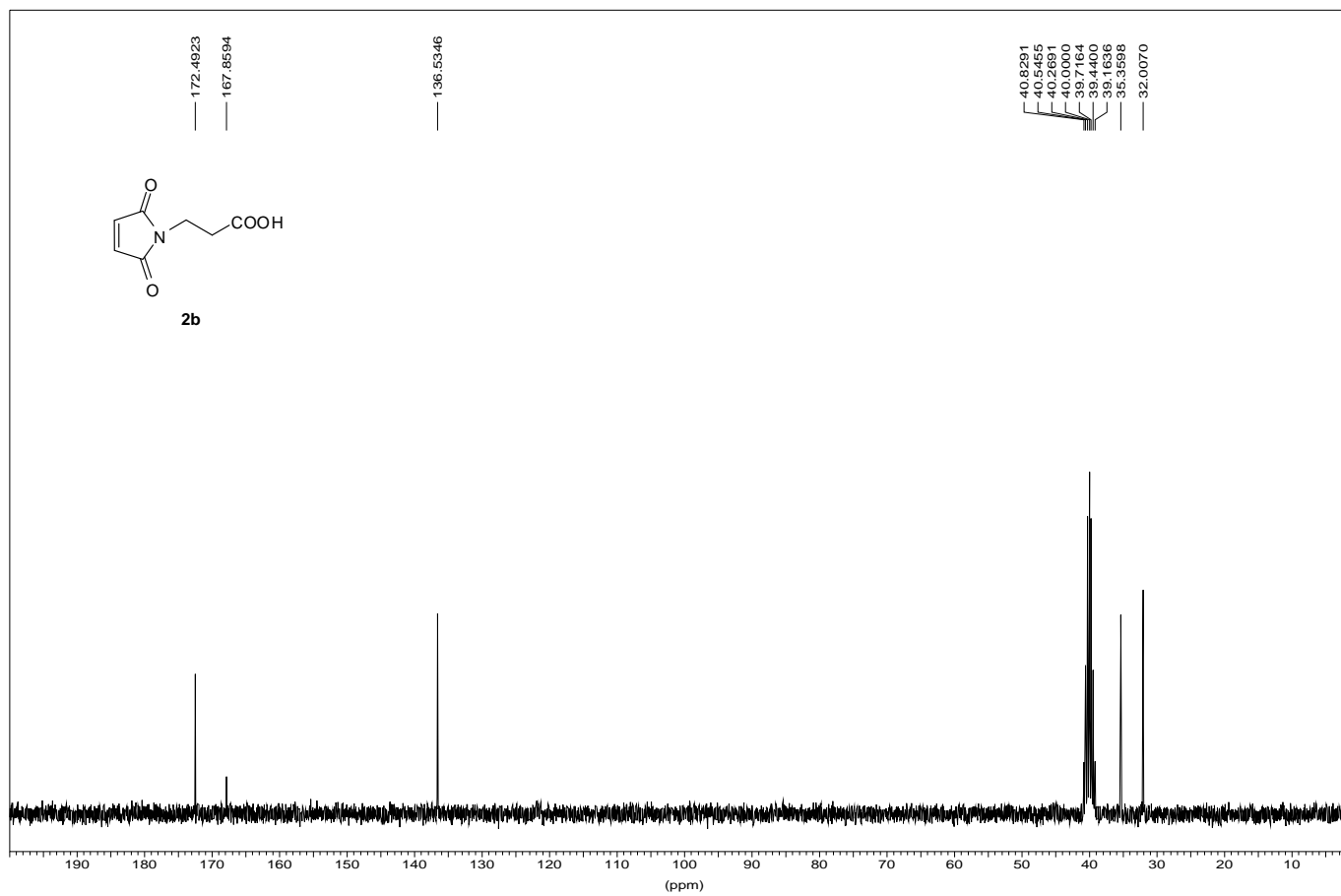


2b



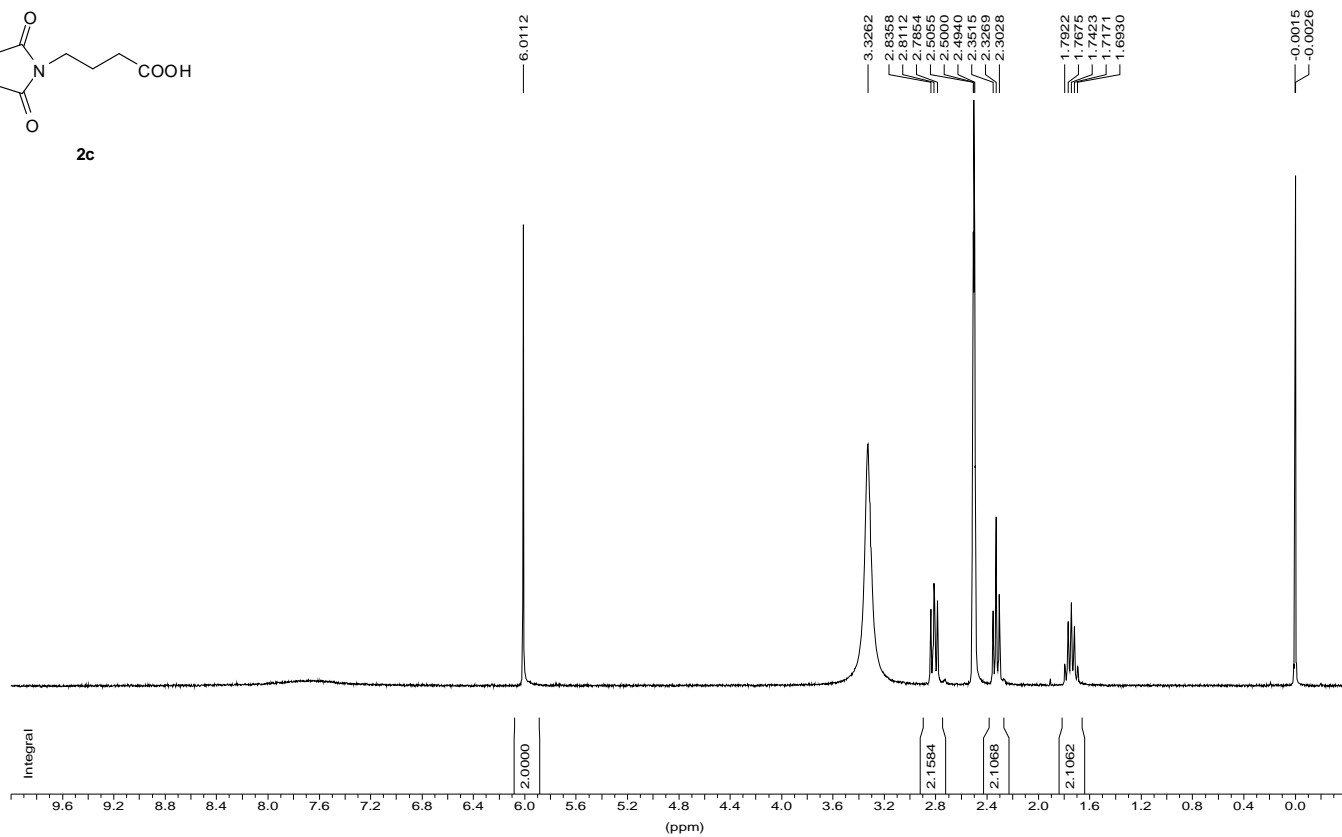
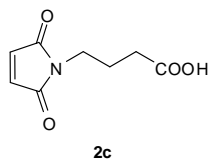
2b

ju231019.4



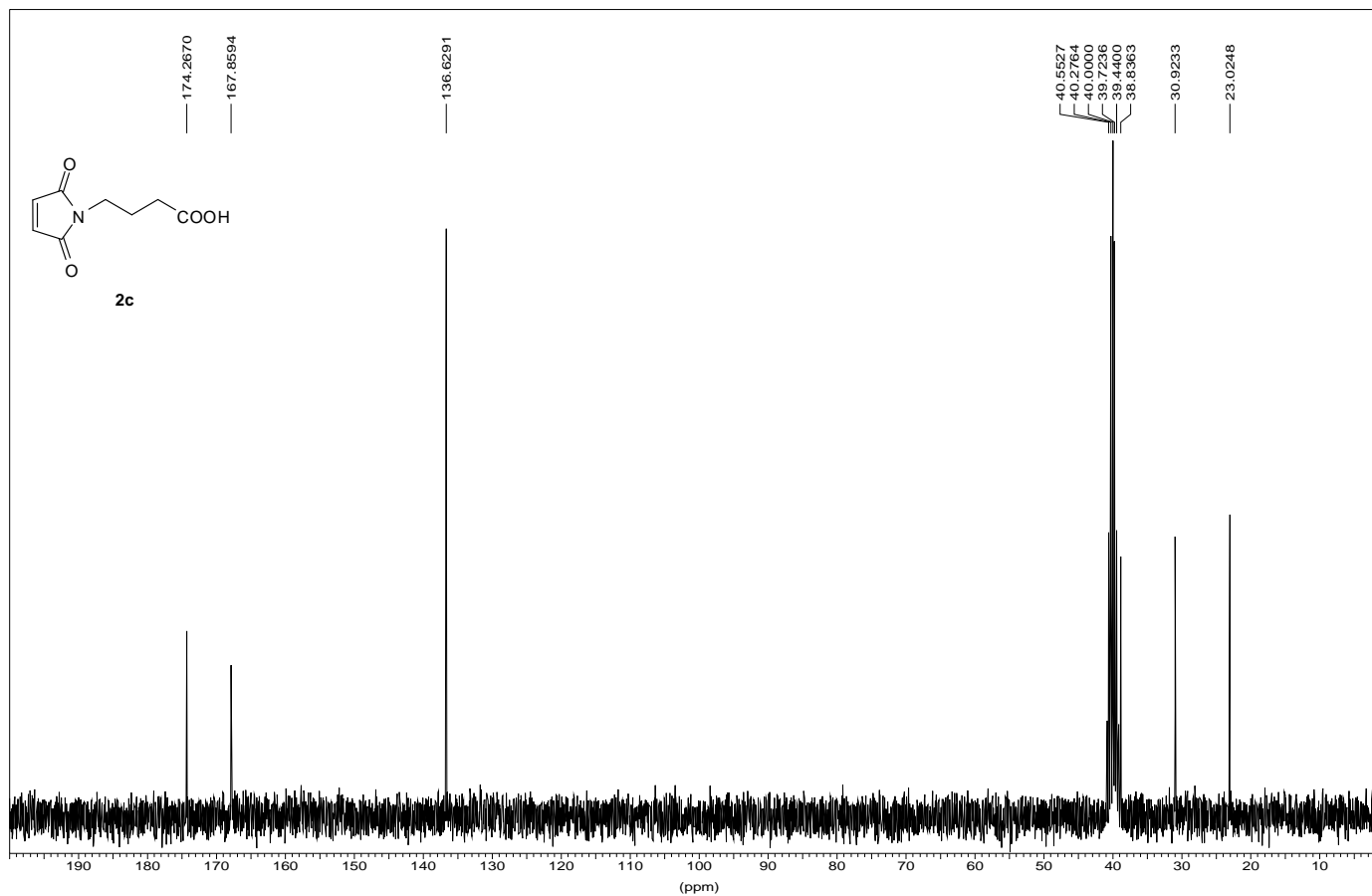
2c

fe10shy1.1 (1091)



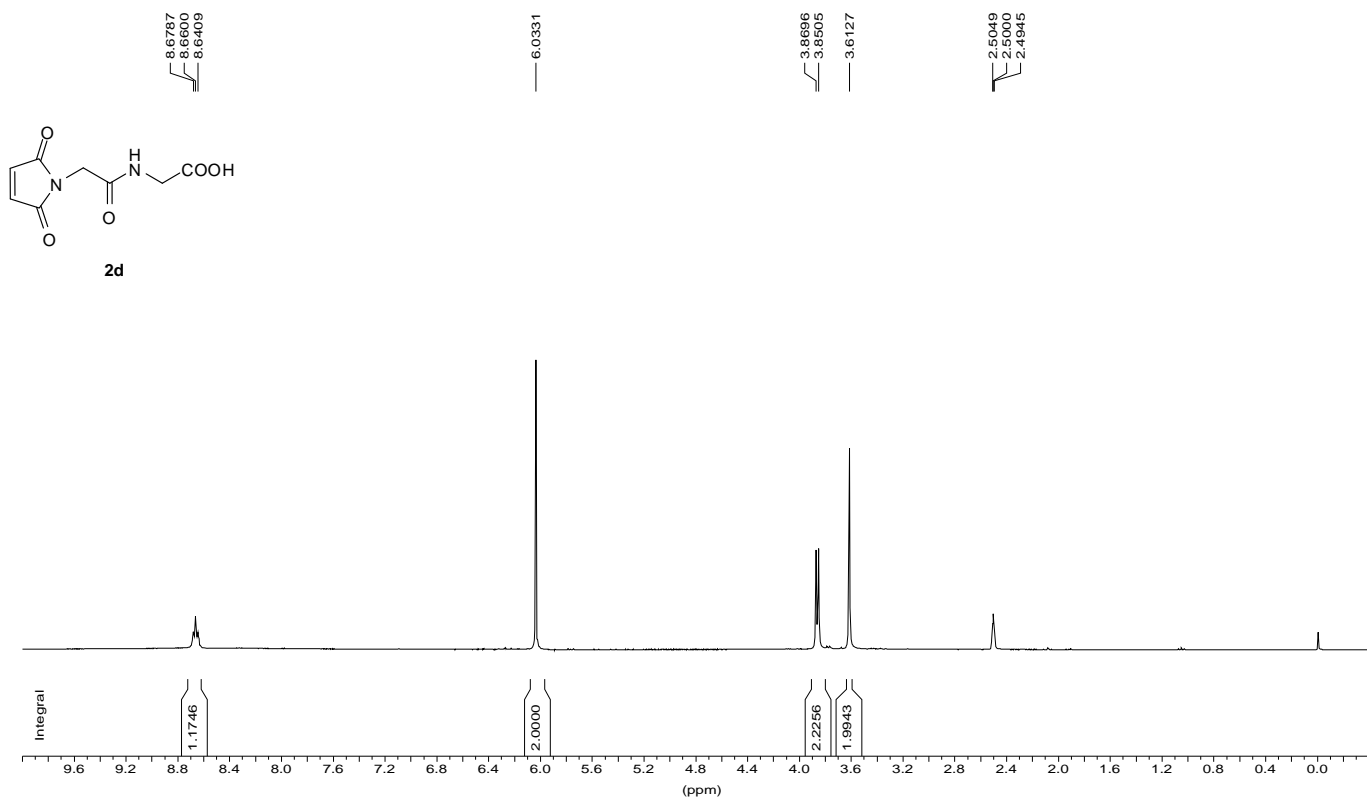
2c

ju261091.2



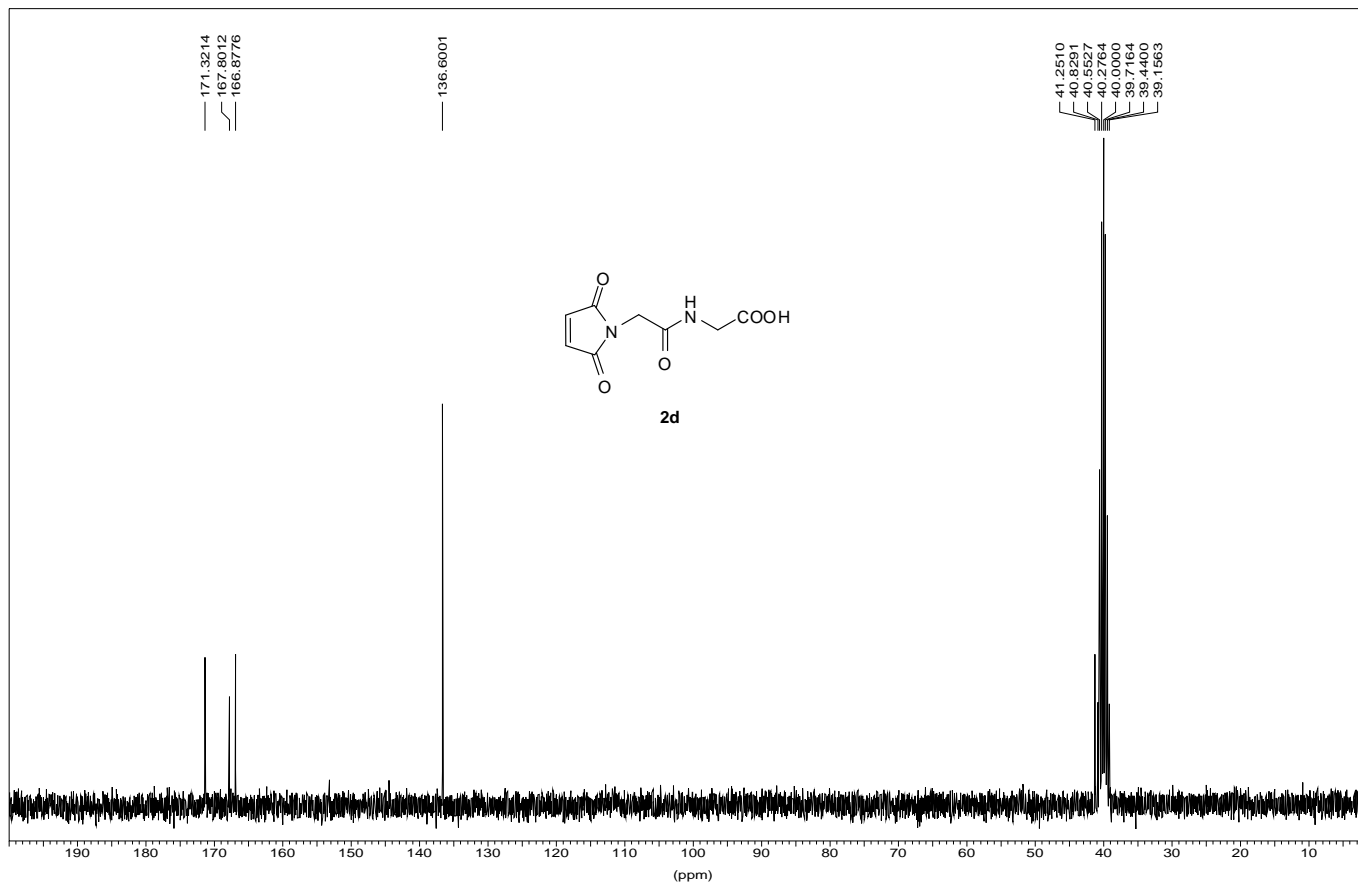
2d

fe10shy3.1 (1095)



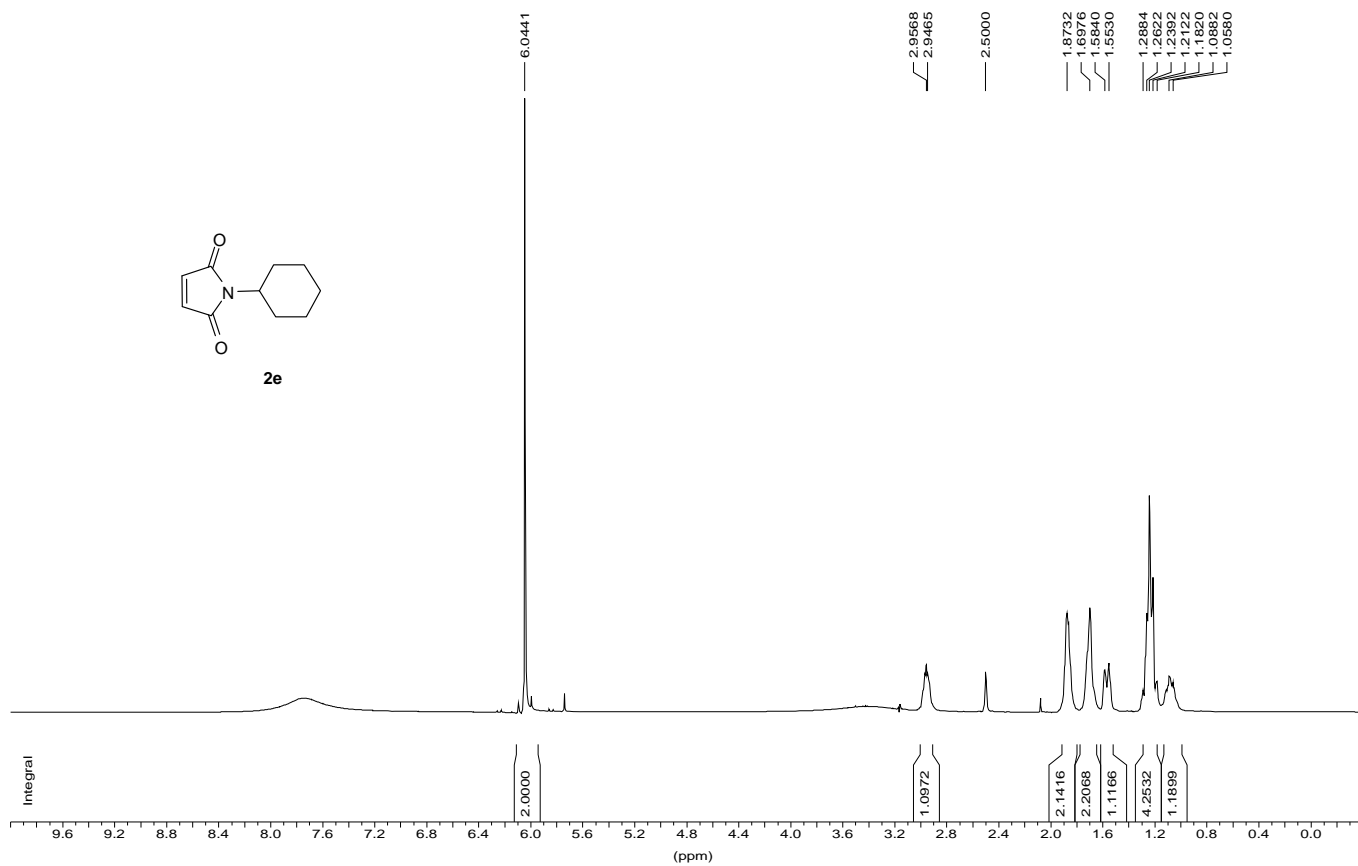
2d

fe10shy3.2 (1095 13C)



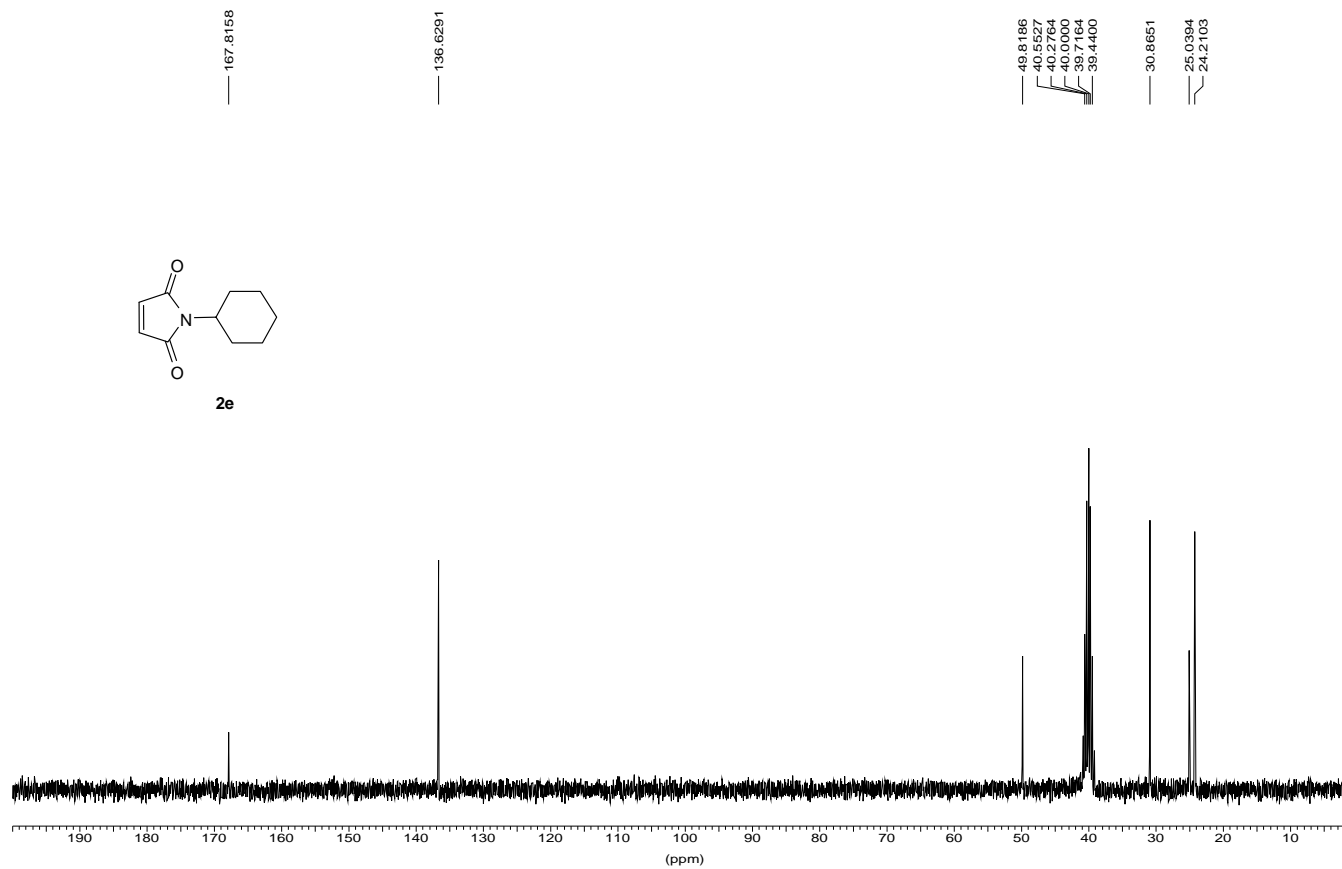
2e

ja302131.1 (2-131)



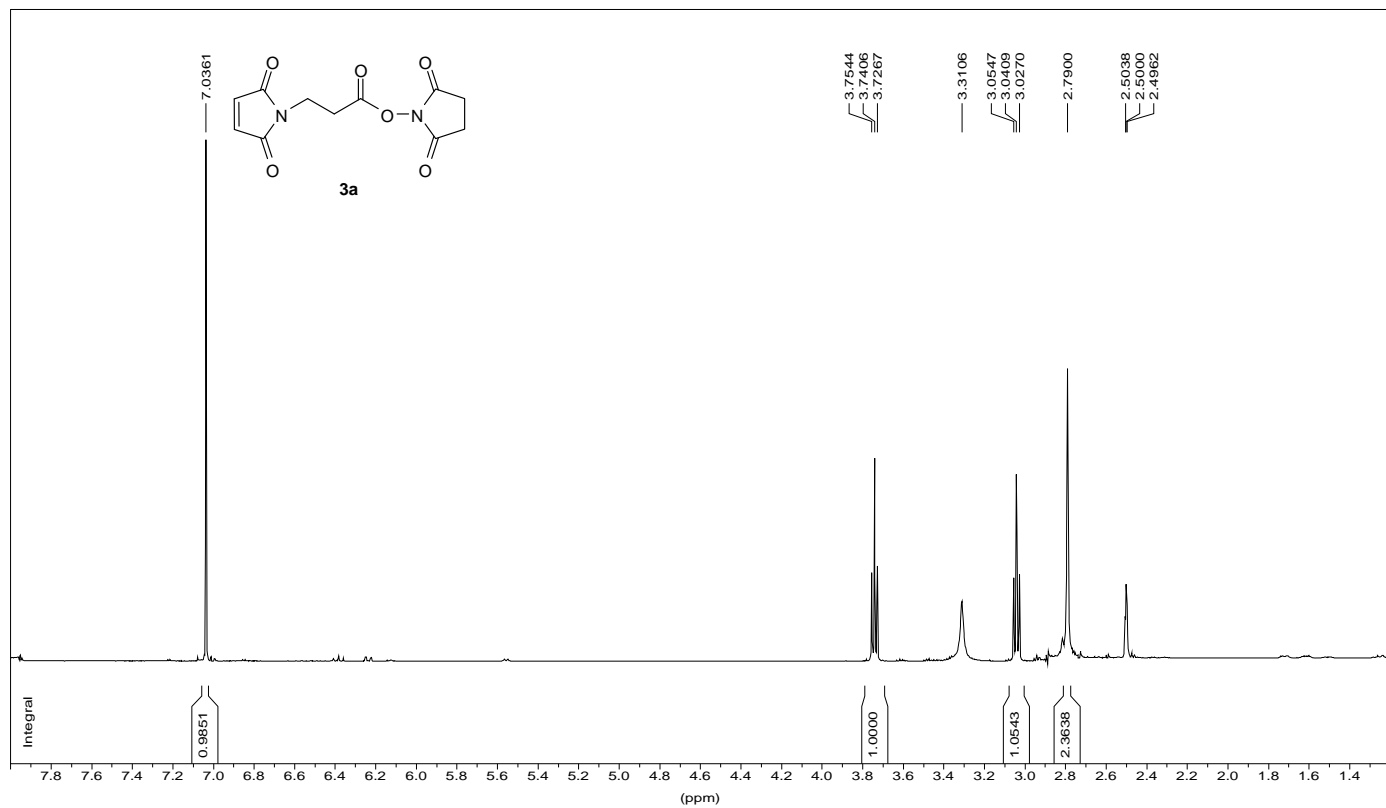
2e

ju25yge.5 1025



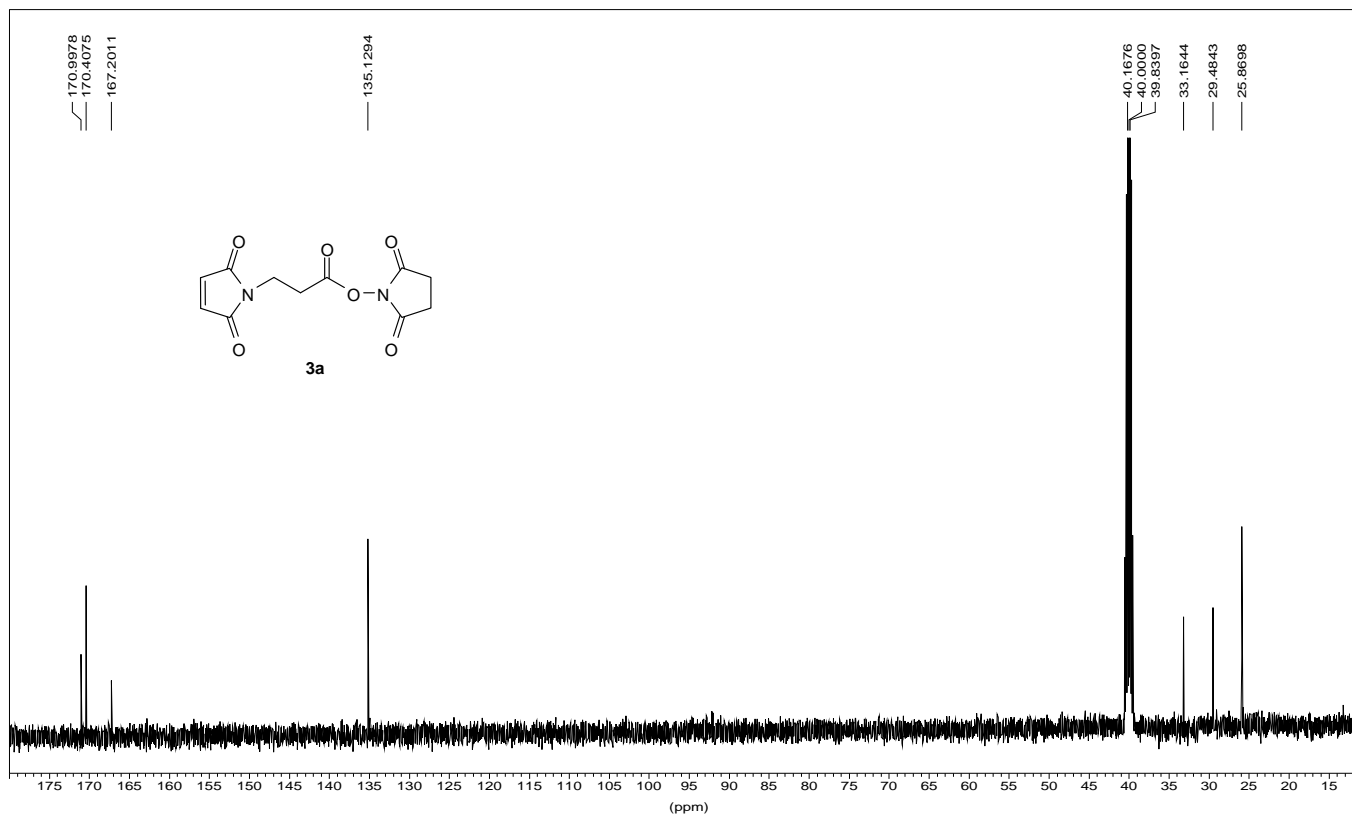
3a.

sg1005shy2.5 (1069-2) (b-ala)



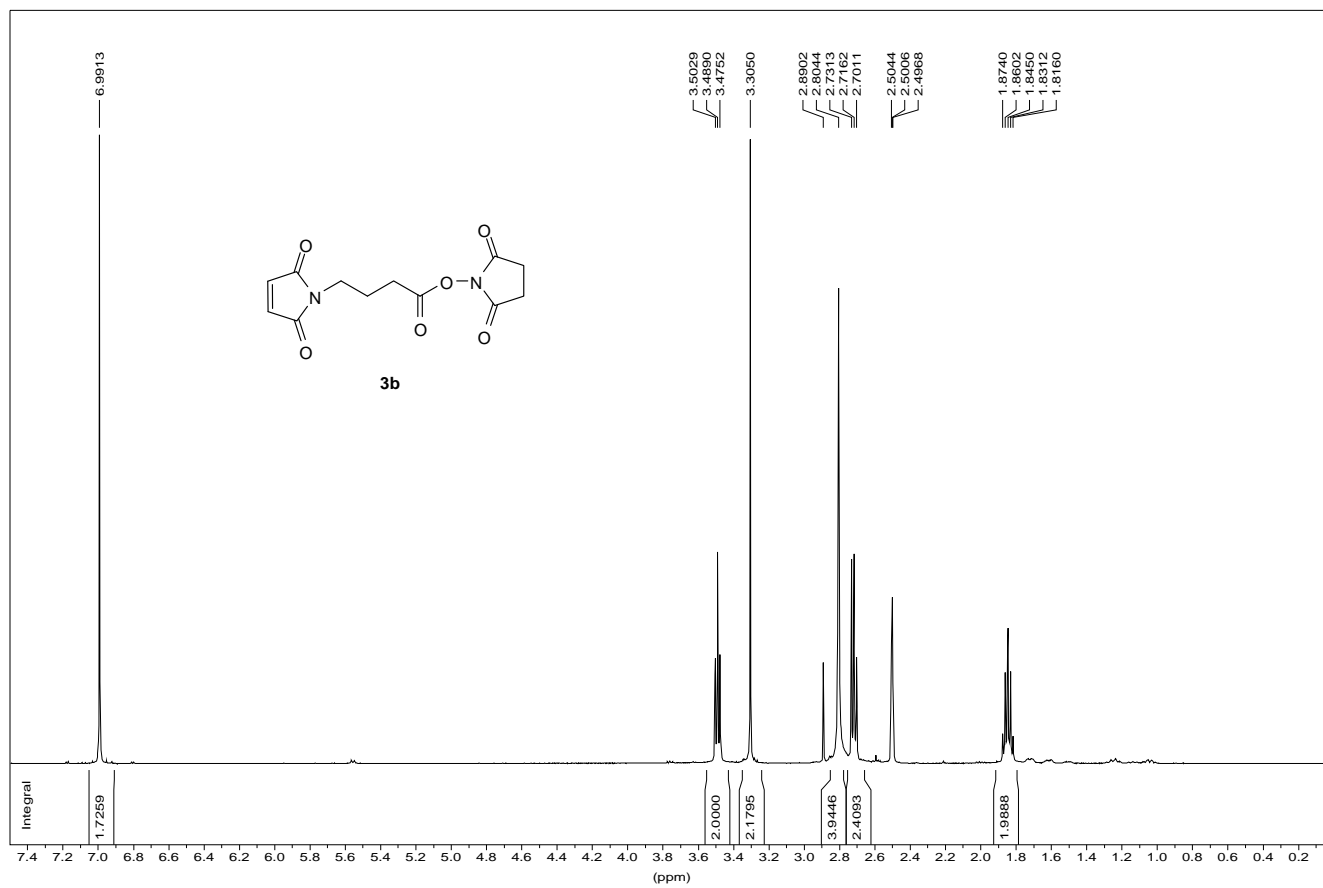
3a

sg1005shy2.6 (1069-2)



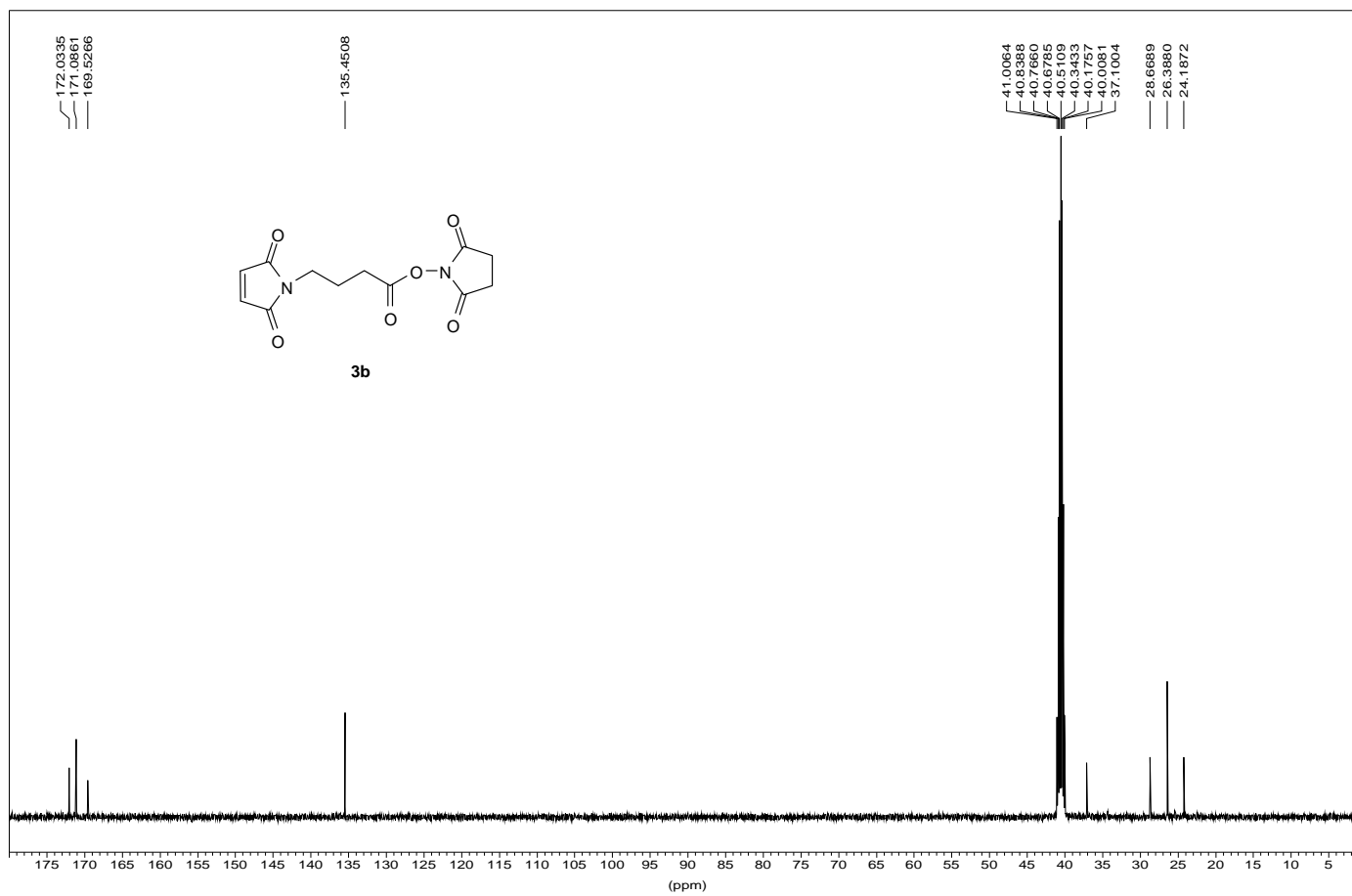
3b

1H AMX500 mh0211 sh3b 1



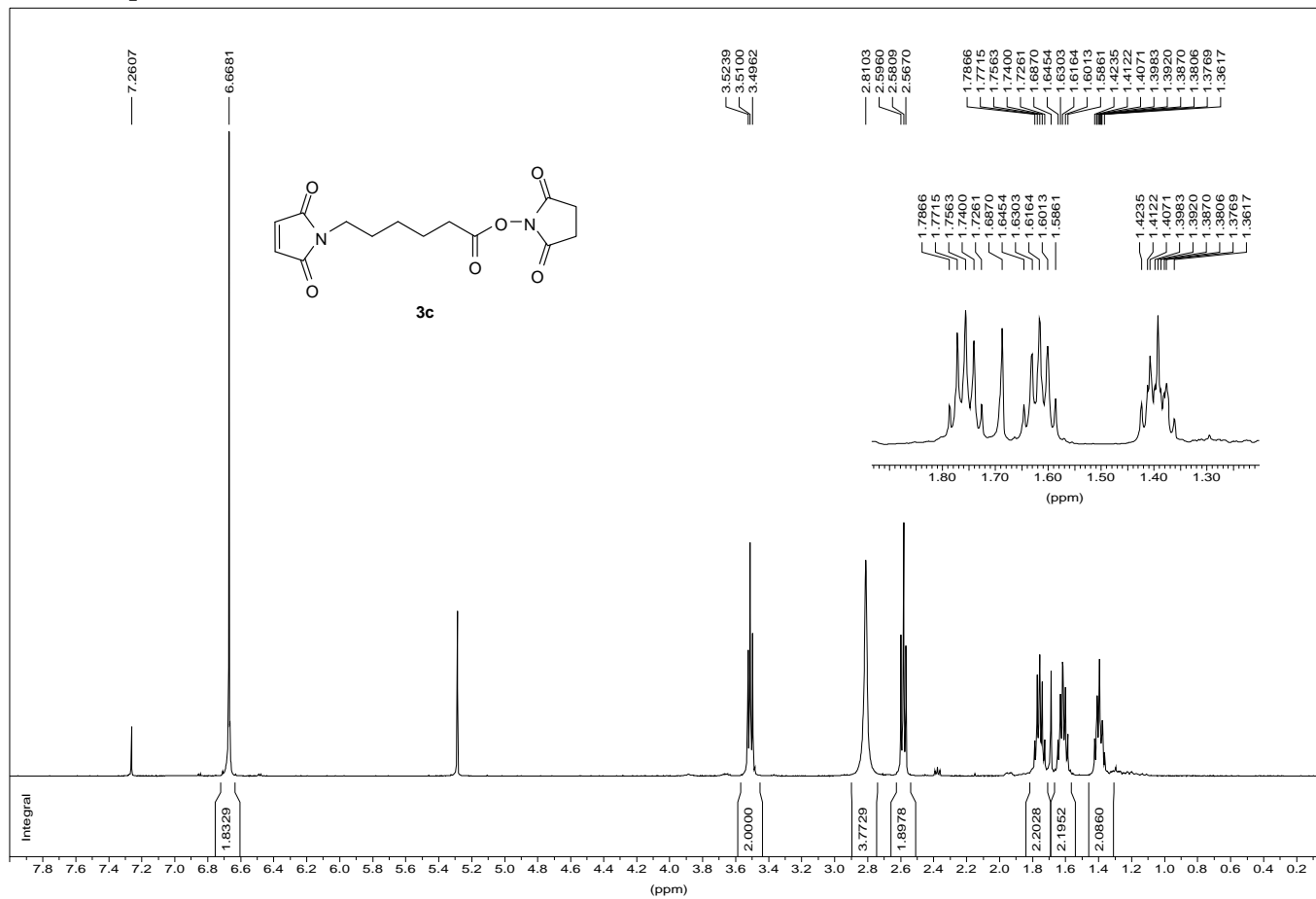
3b

13C AMX500 mh0211 sh3b 2



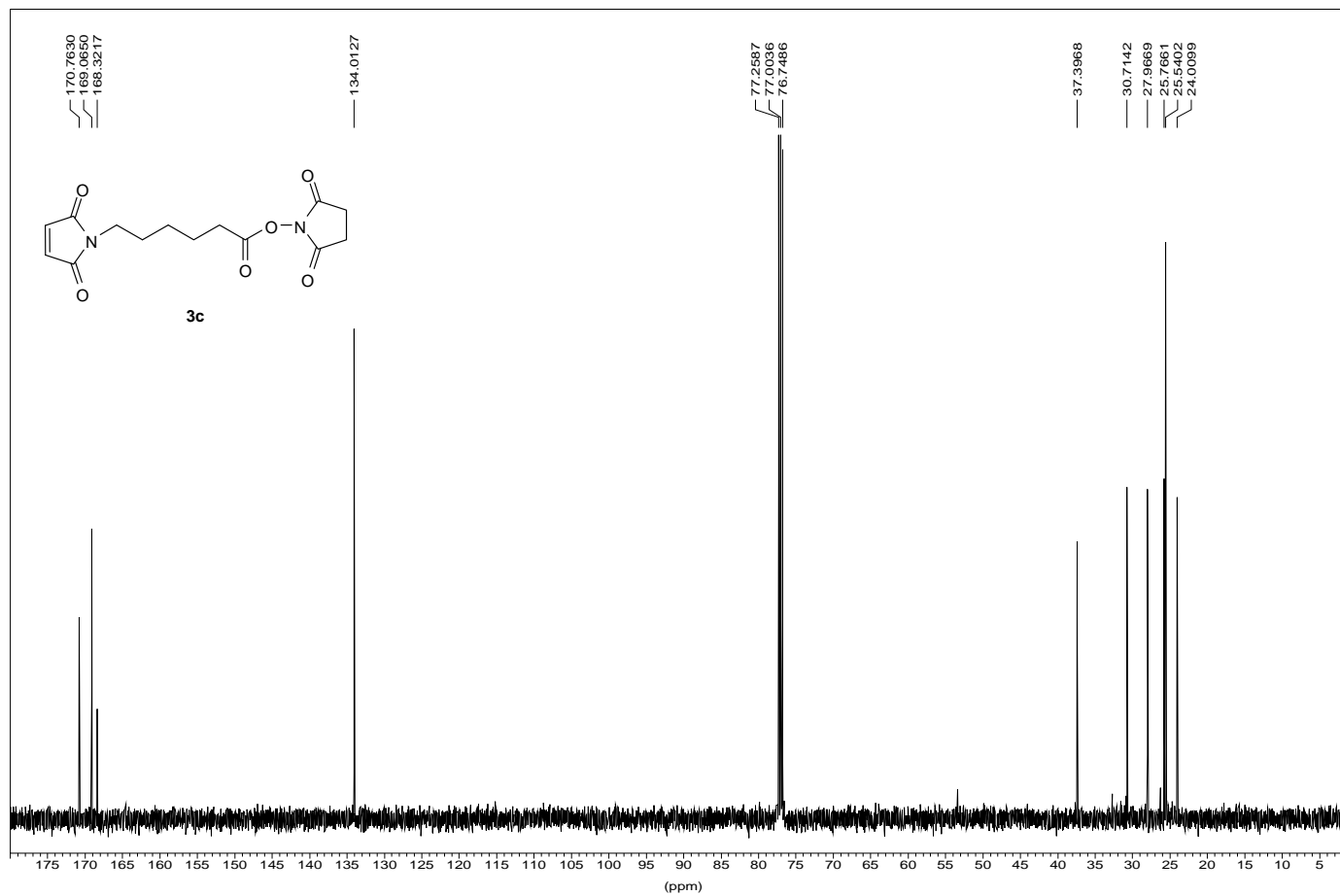
3c

1H AMX500 mh0210_5135 sh6c 2



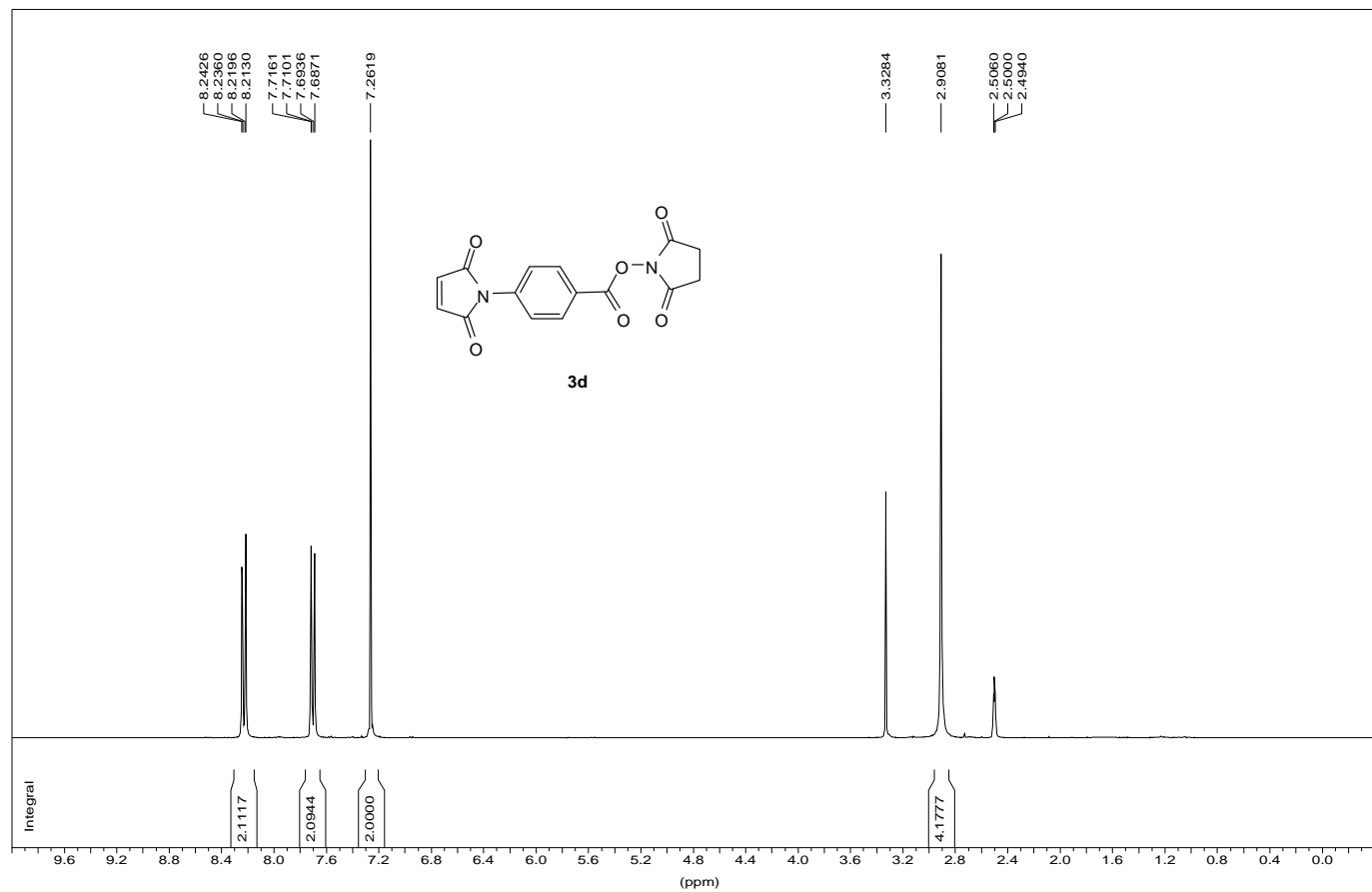
3c

13C AMX500 mh0210_5135 sh6c 4



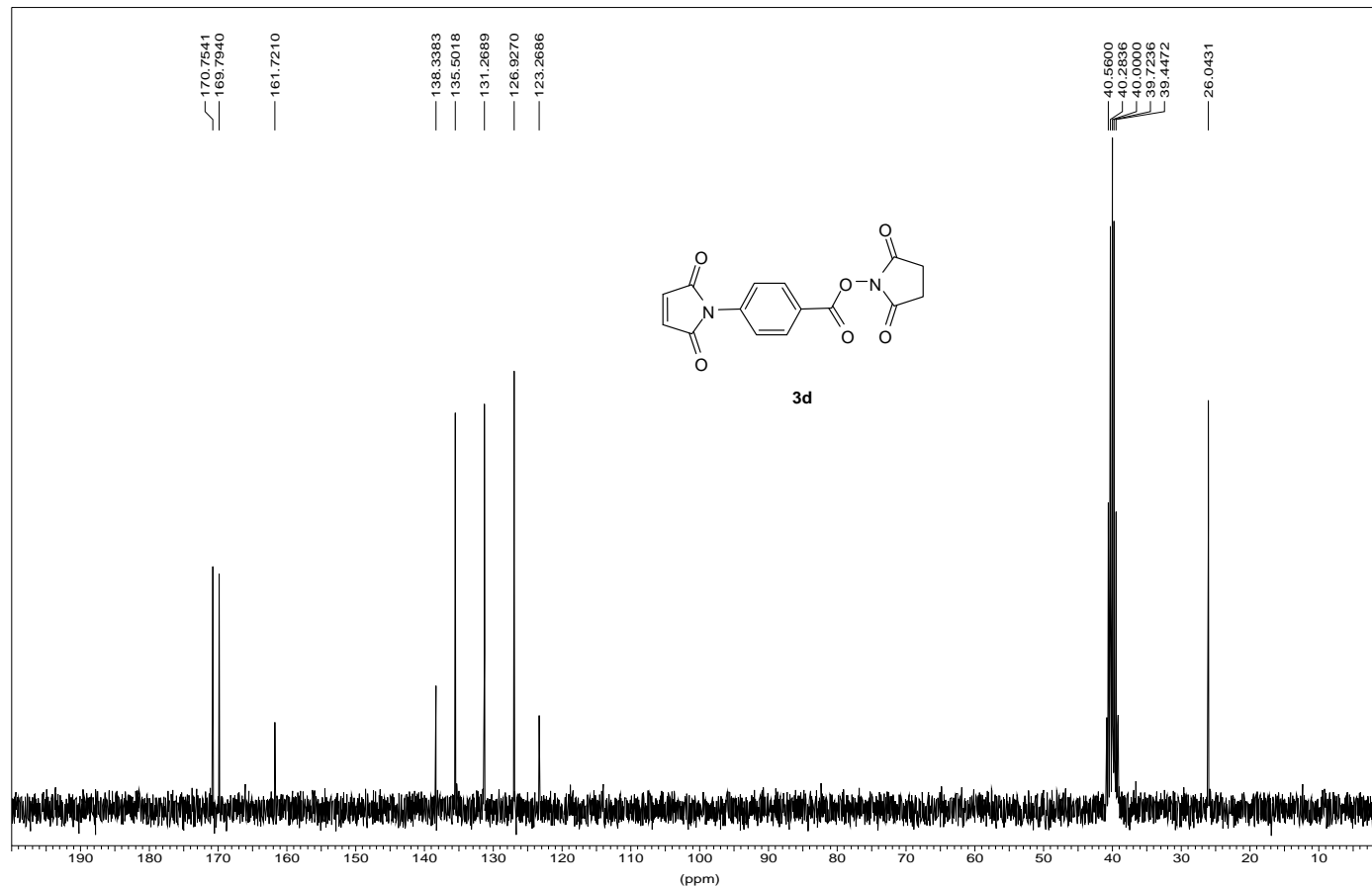
3d

ja29shy.1 2-131

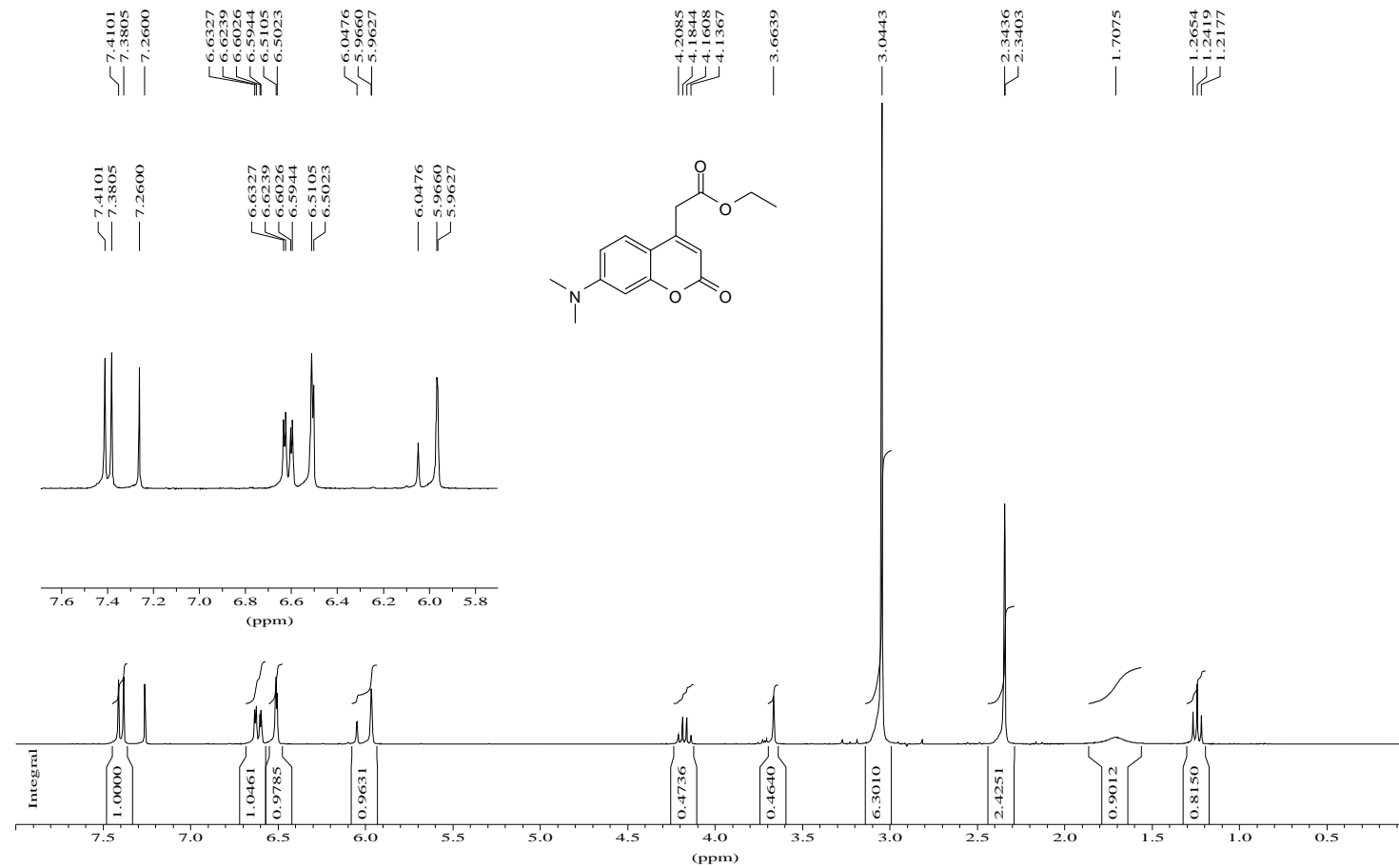


3d

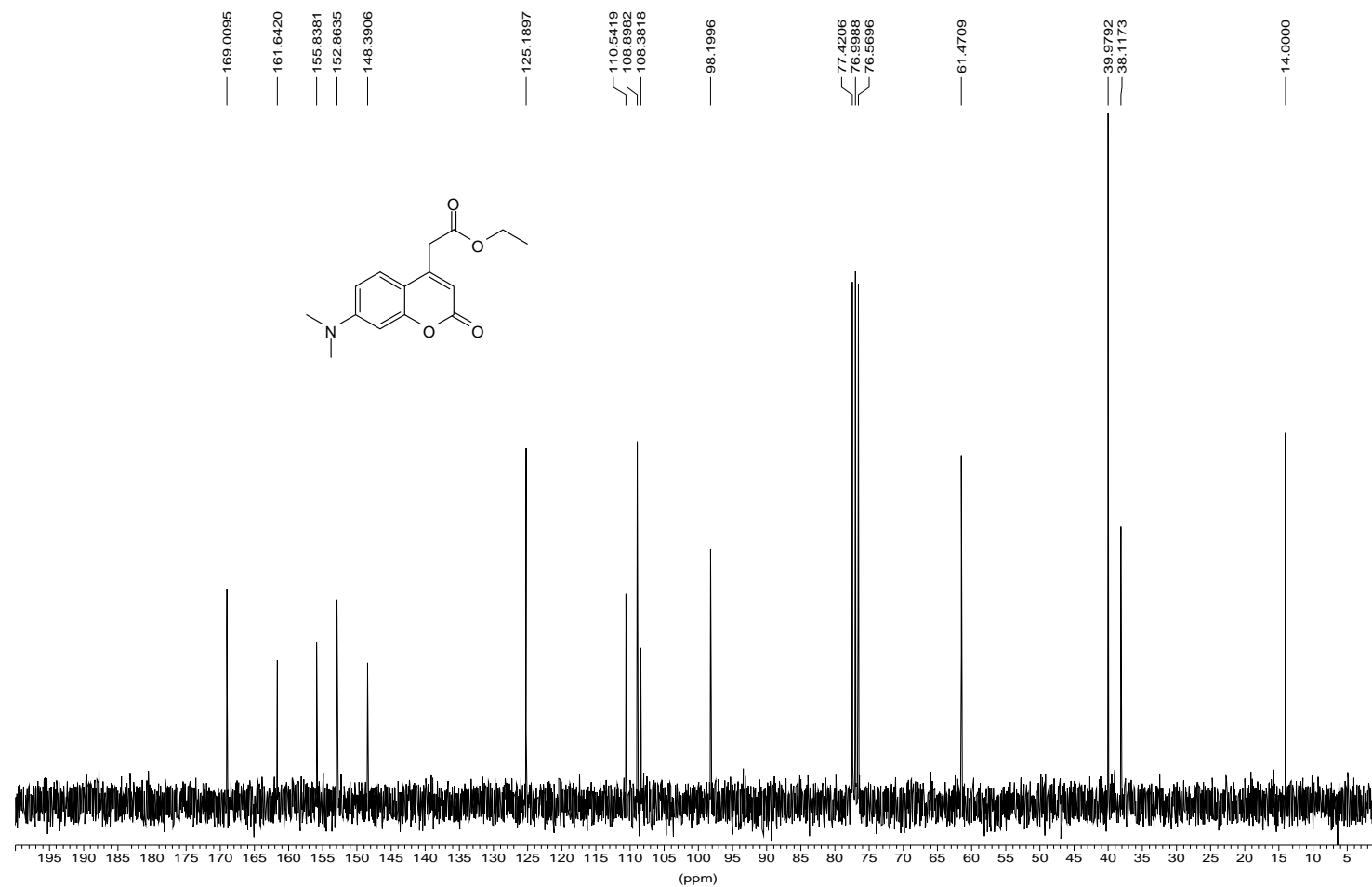
ja29shy.2 2-131



¹H normal range AV300 fe06nmh1103-5

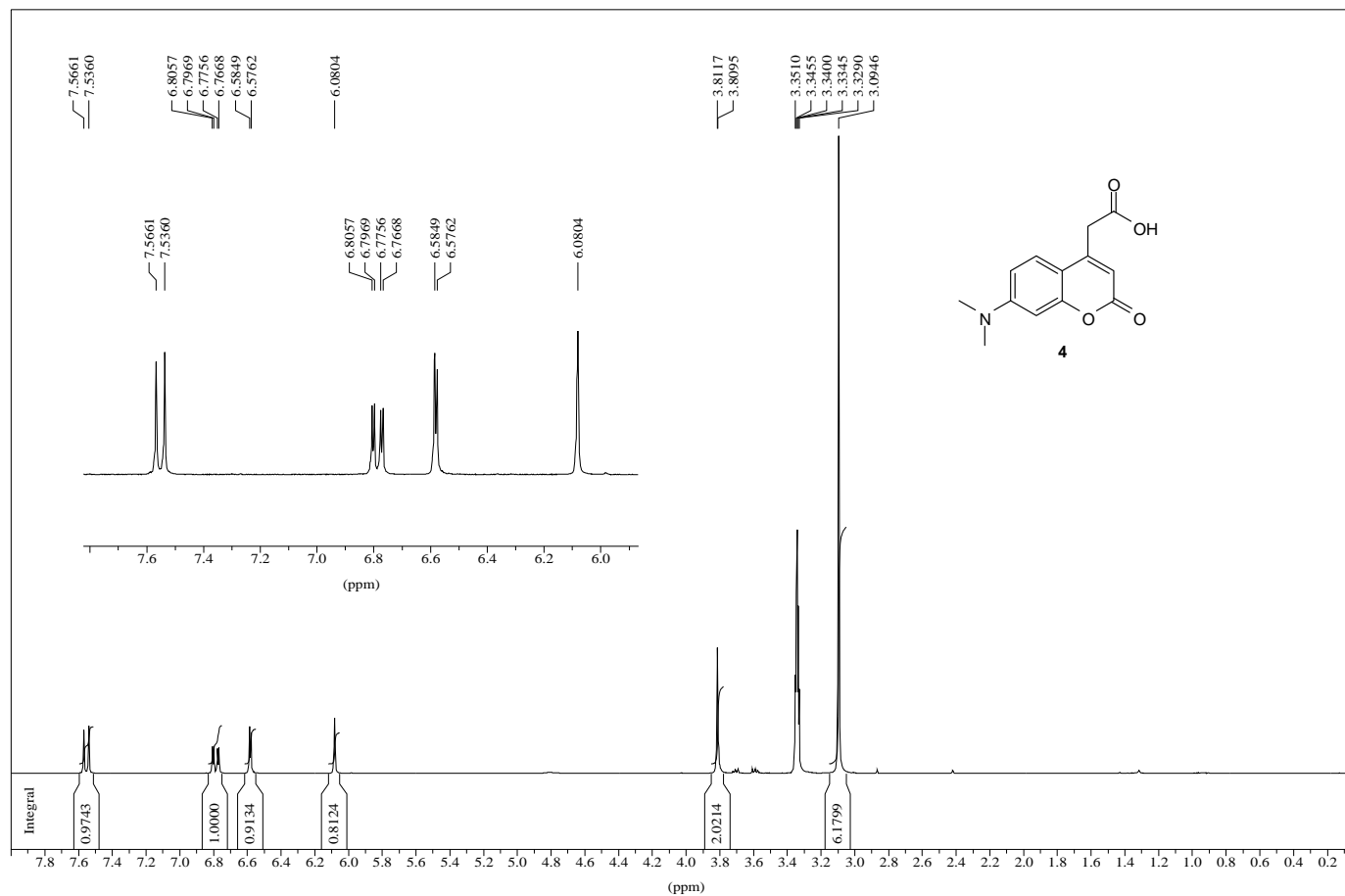


fe171103-5 13C



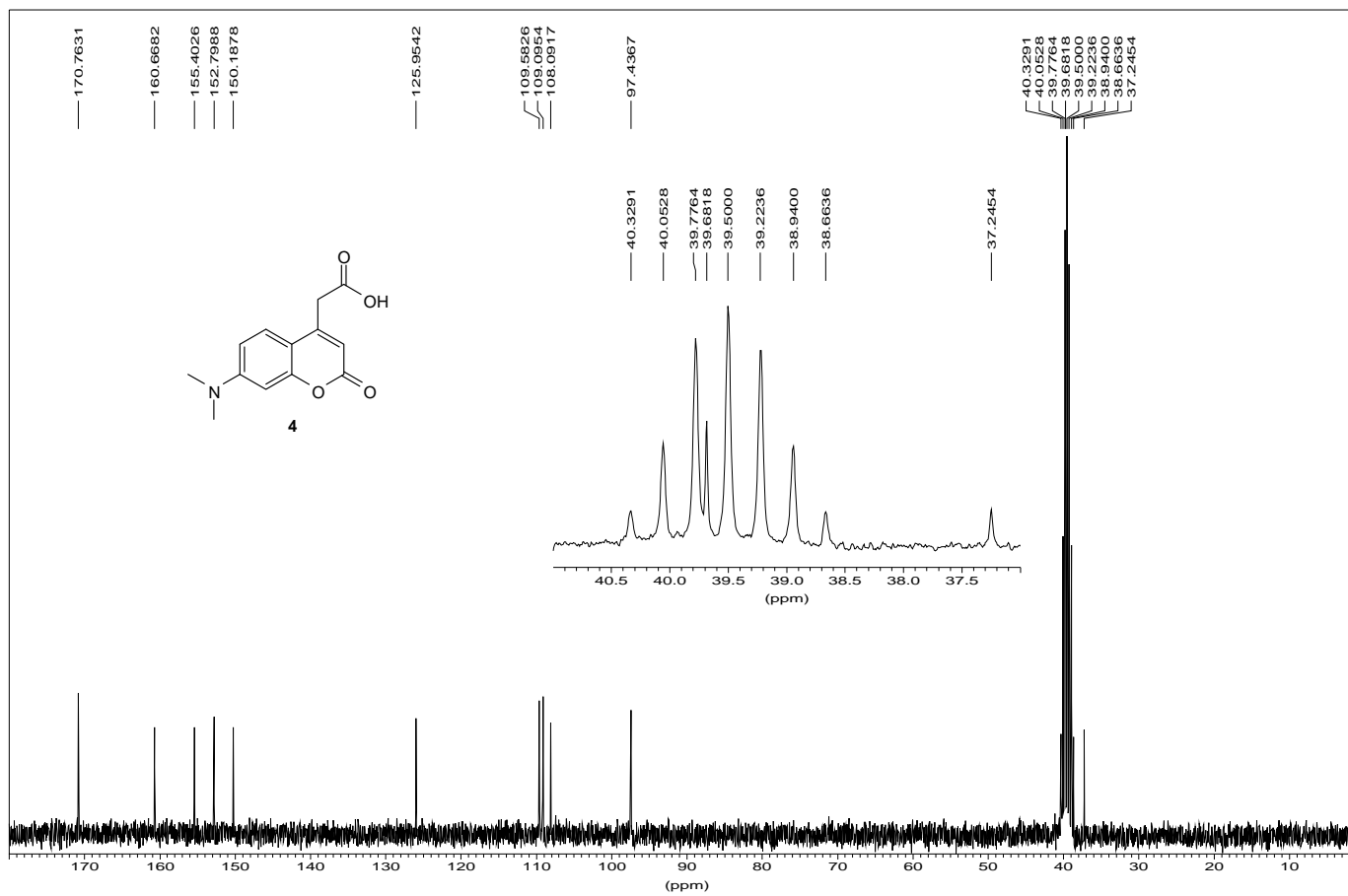
4

¹H Water suppression fe08nmh1101



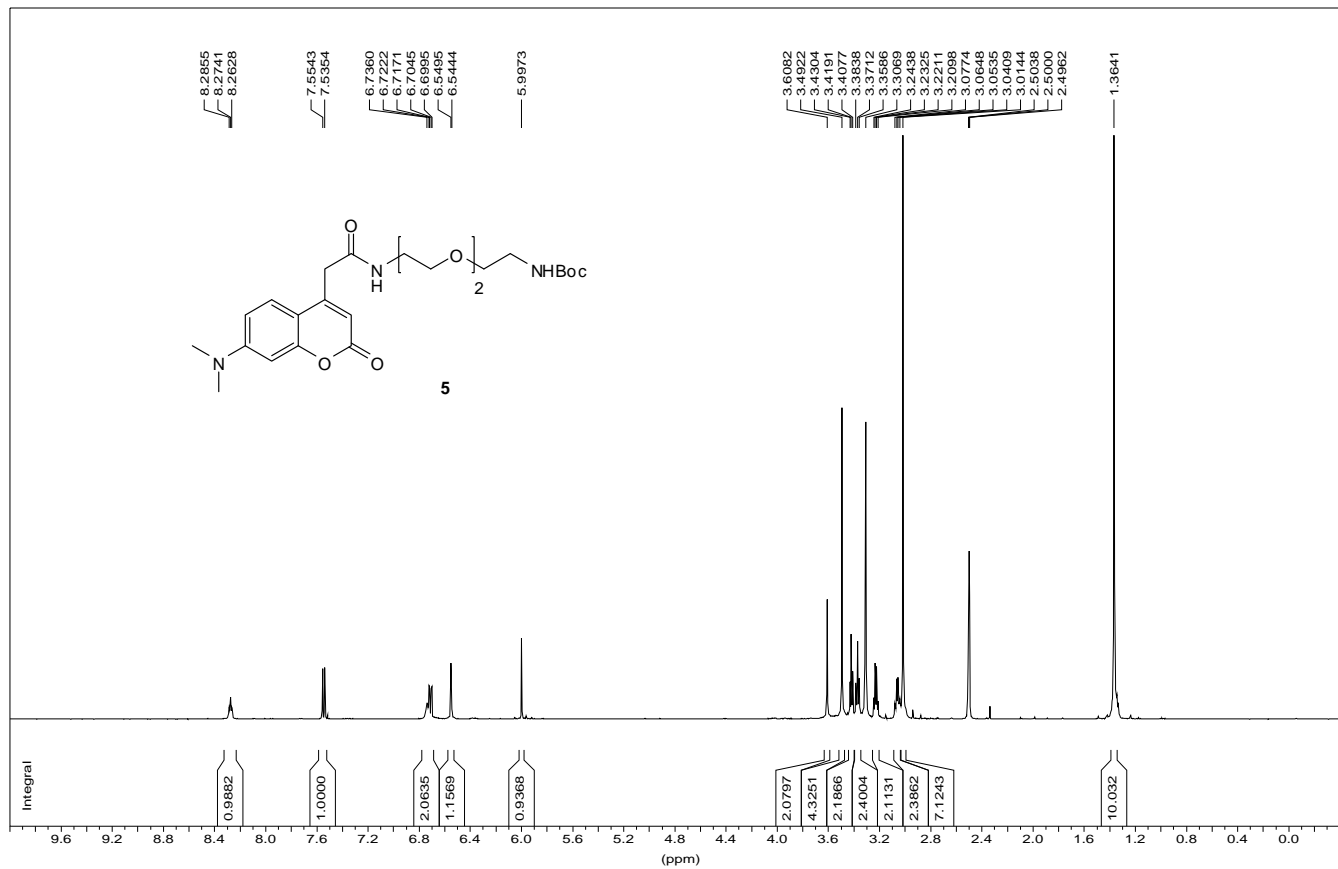
4

¹³C Standard AV300 mun hong c13 nmh1109



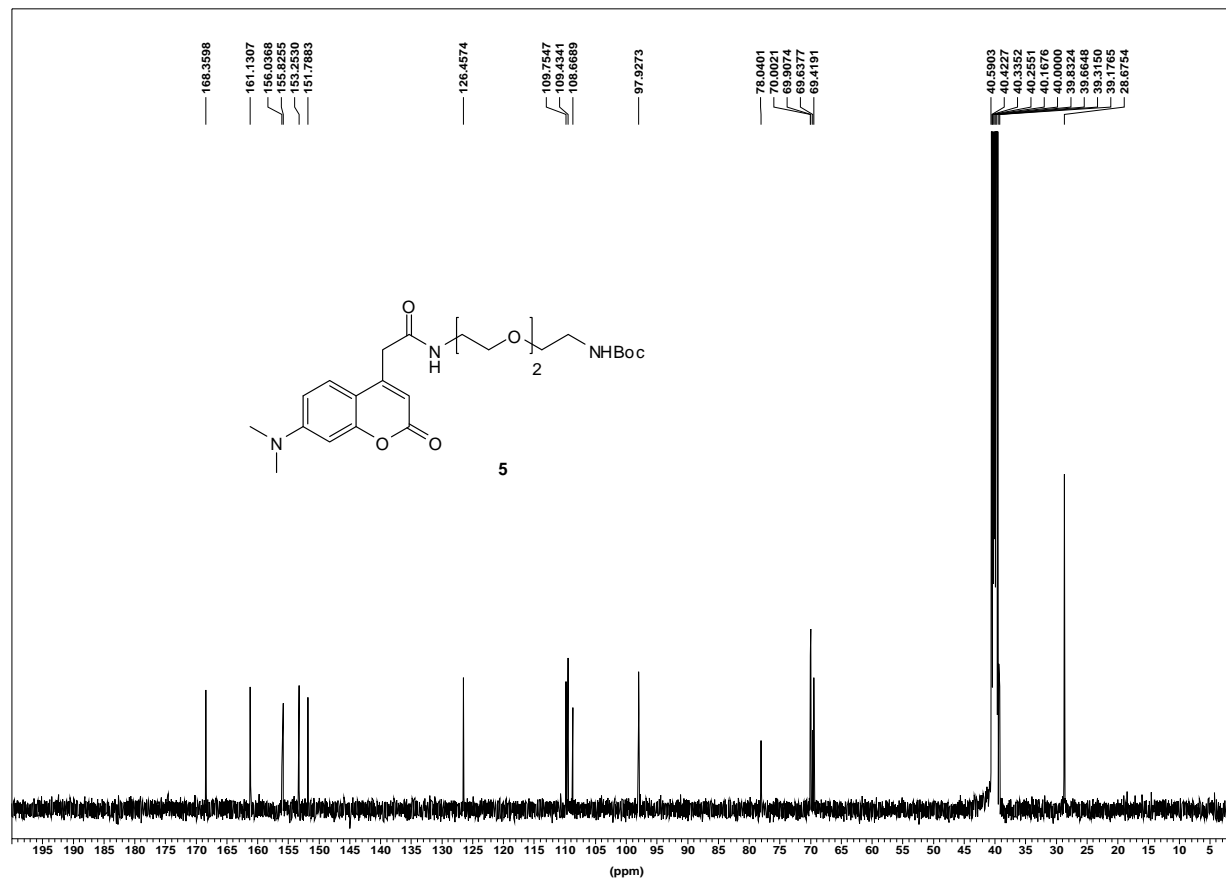
5

sg06261005.1



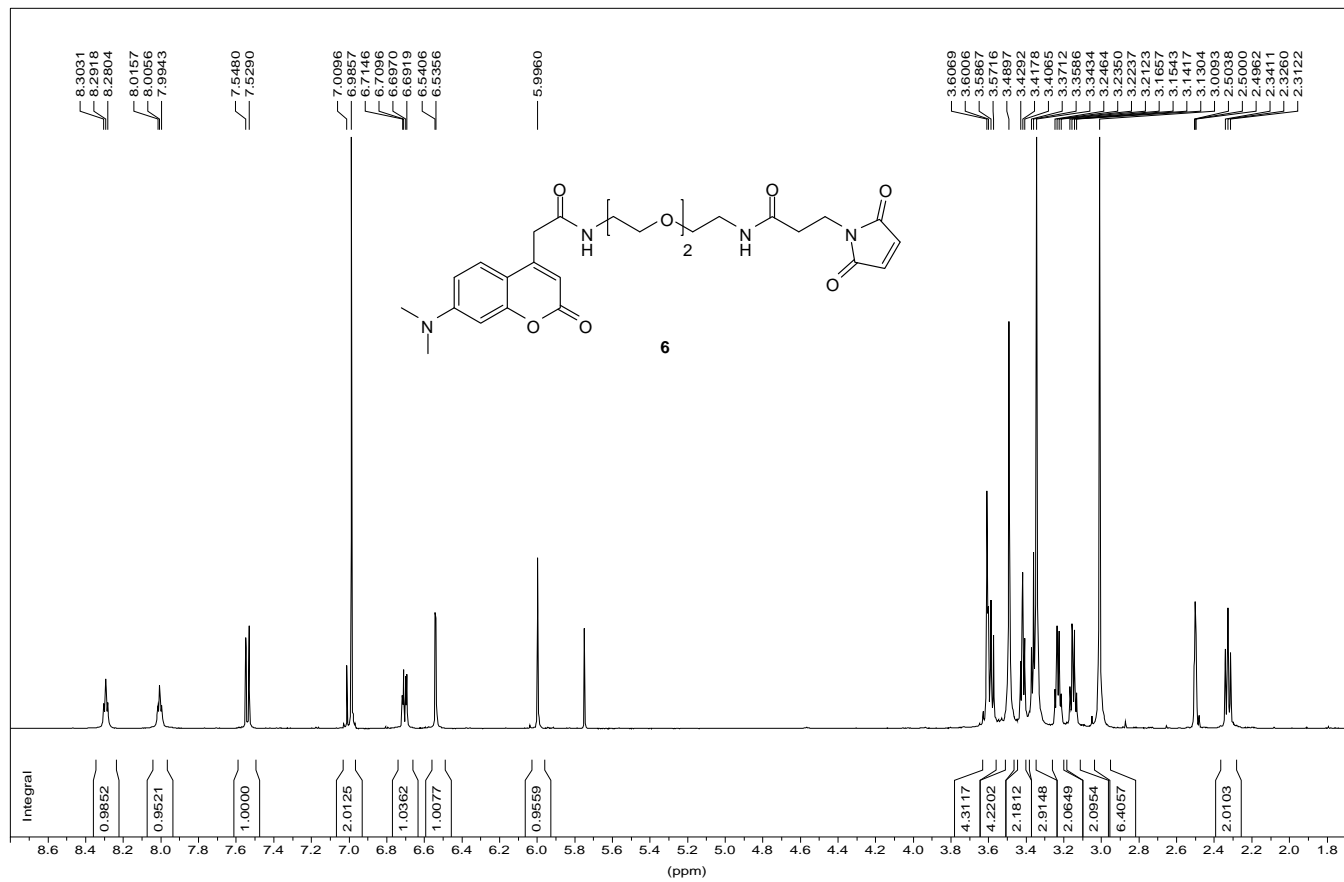
5

sg06261005.2



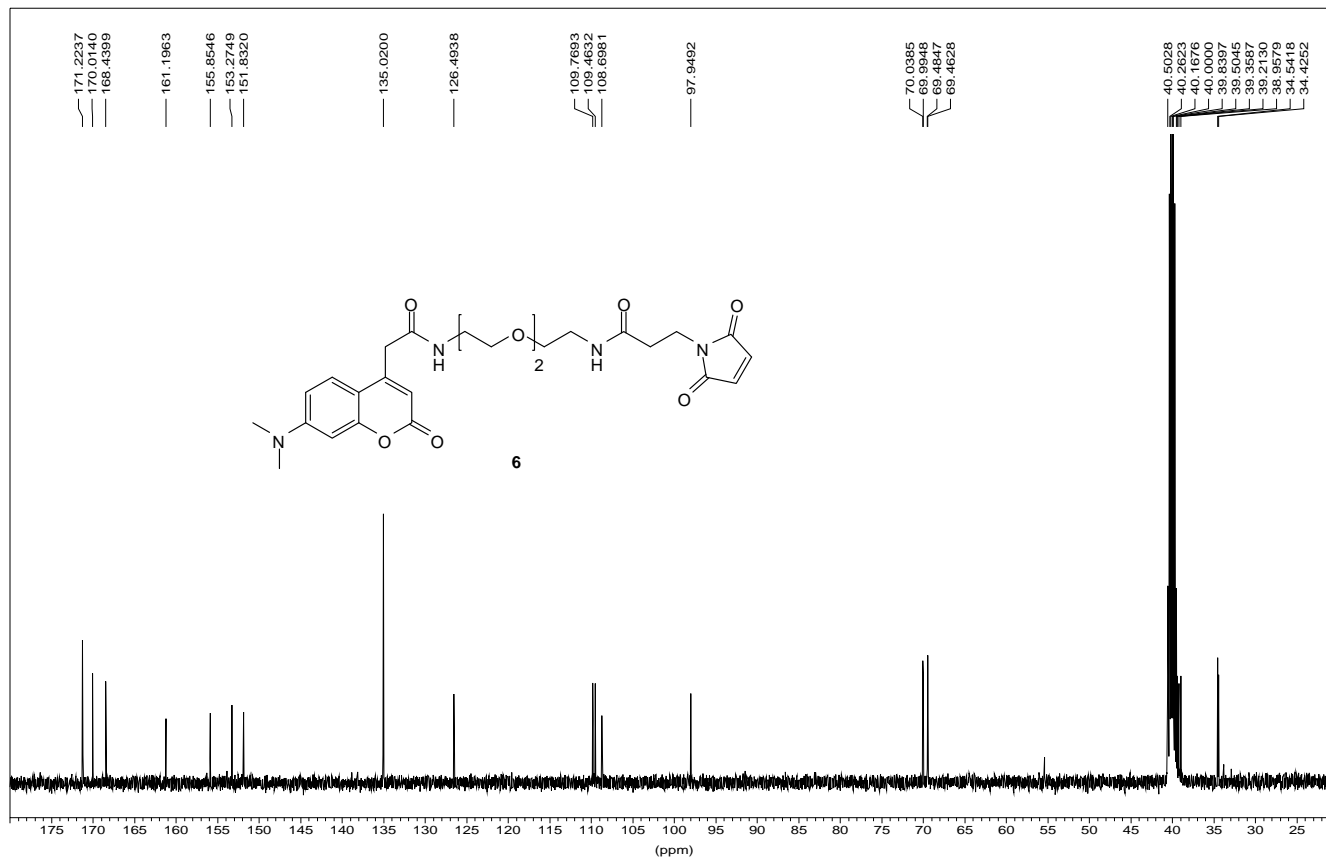
6

sg1023shy1.1 (1065 1H)



6

sg1023shy1.2 (13C 1065)



6

DEPT135 sg1023shy1.3 (1065)

