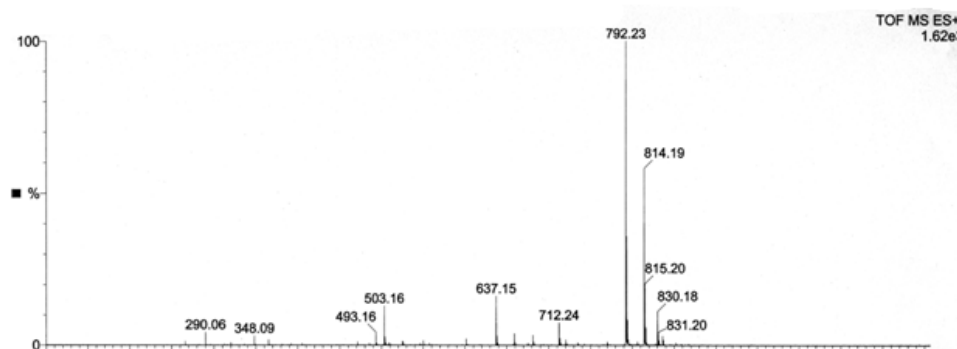


## ELECTRONIC SUPPLEMENTARY INFORMATION

### Simultaneous and site-directed incorporation of ester linkage and azide group into polypeptide by in vitro translation

Martin Humenik, Yiwei Huang, Igor Safronov, Mathias Sprinzl\*

Laboratorium für Biochemie, Universität Bayreuth, Universitätstrasse 30, 95440 Bayreuth, Germany; E-mail: mathias.sprinzl@uni-bayreuth.de; Fax: +49-921-55-2066



**Fig. 1S:** TOF MS ES+ spectra of compound 6

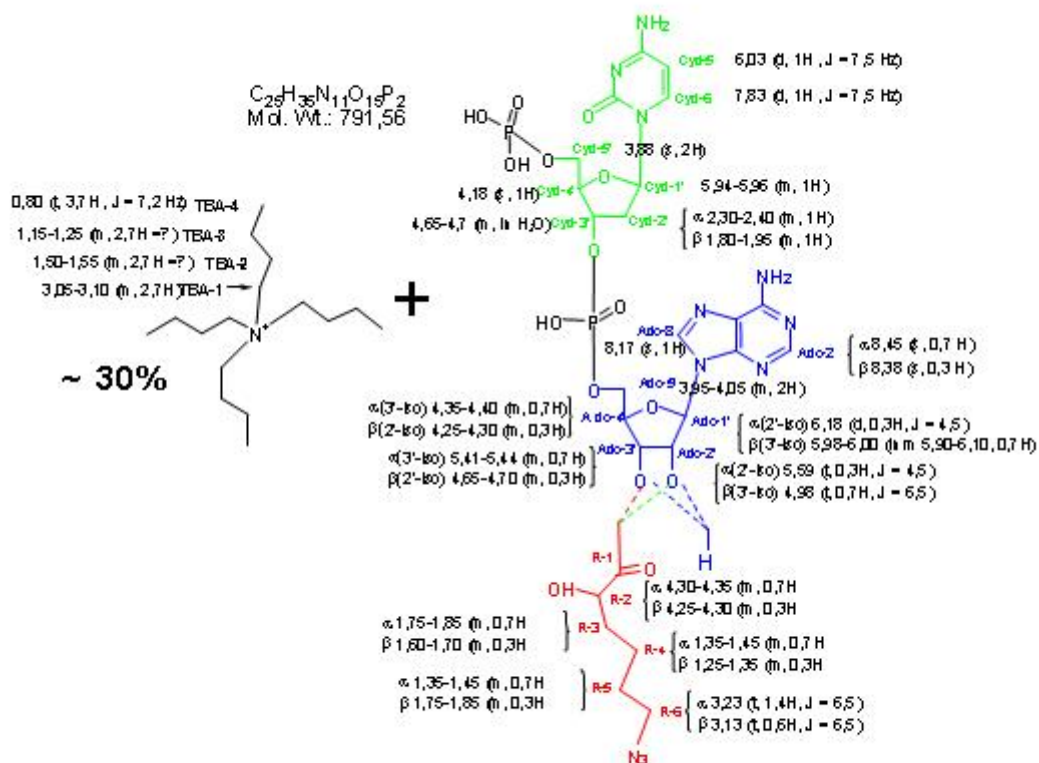


Fig. 2S: NMR structural assignment of compound 6

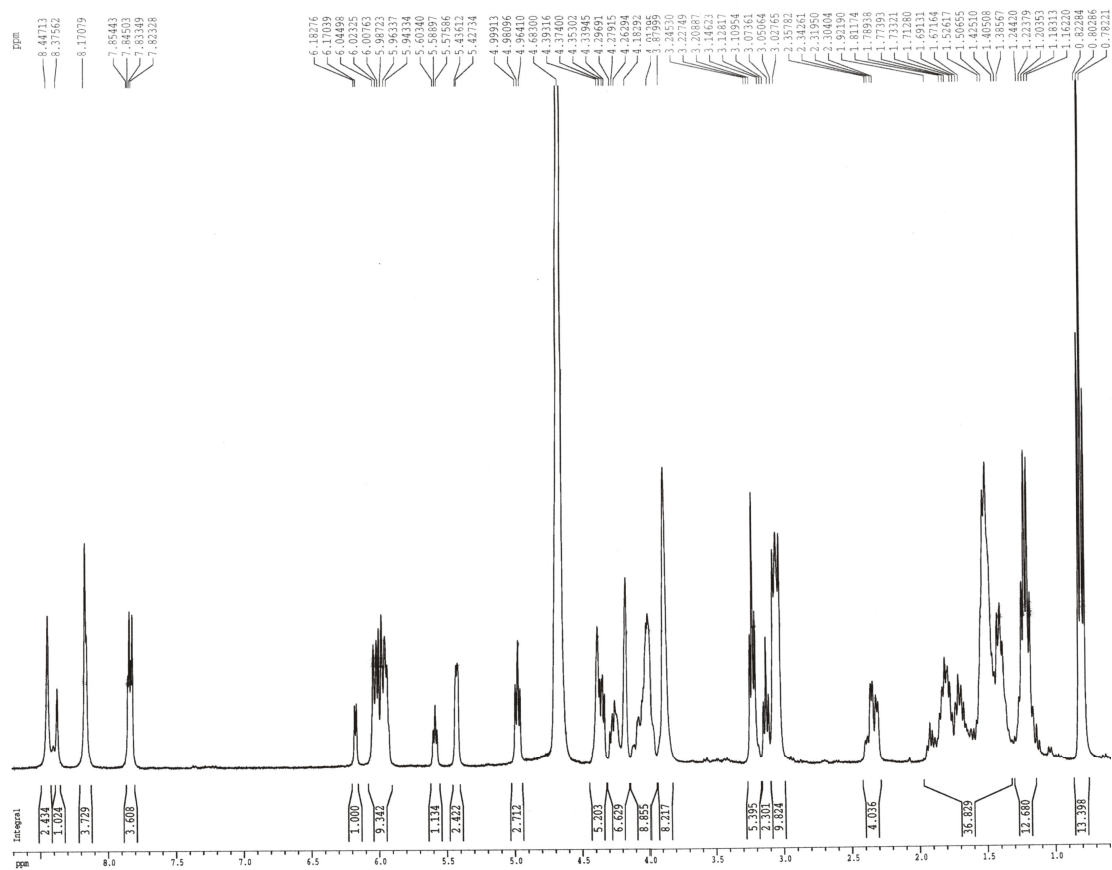
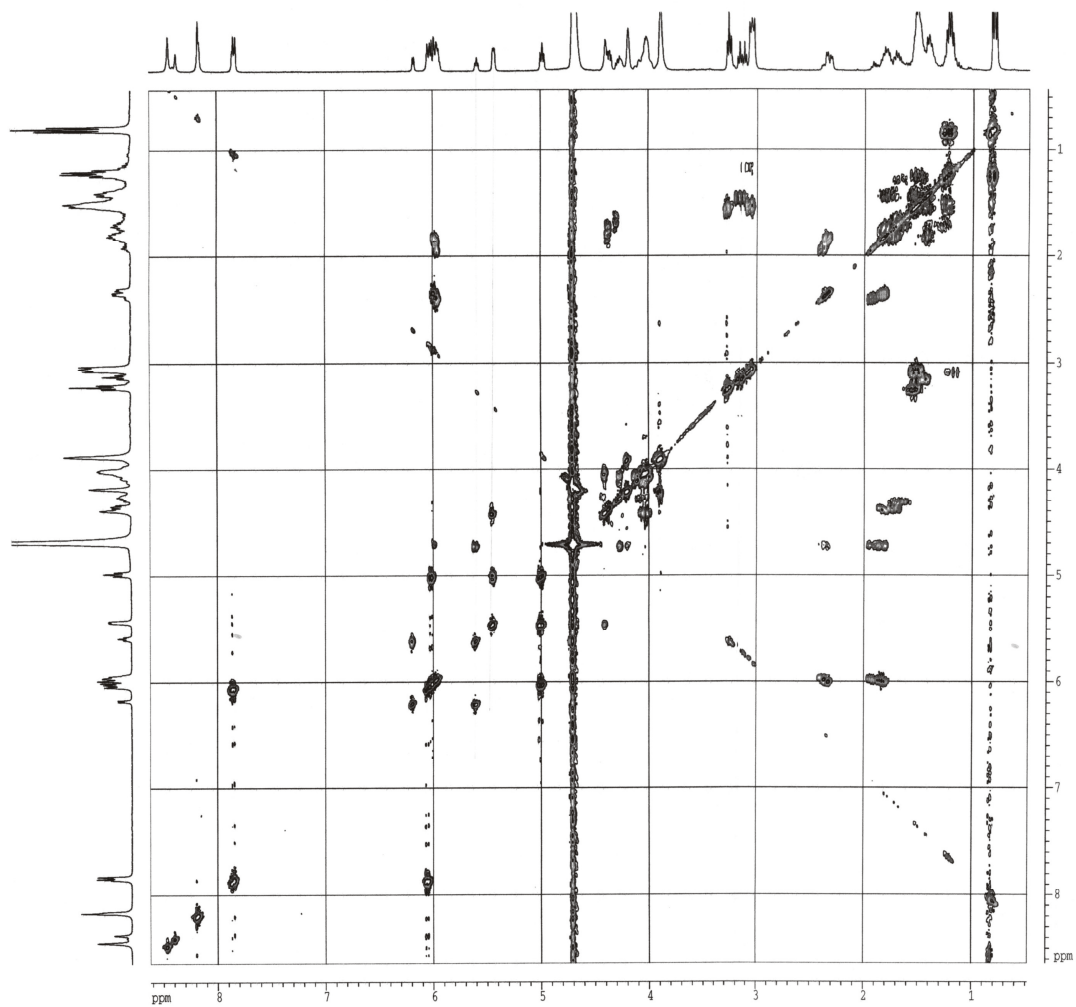
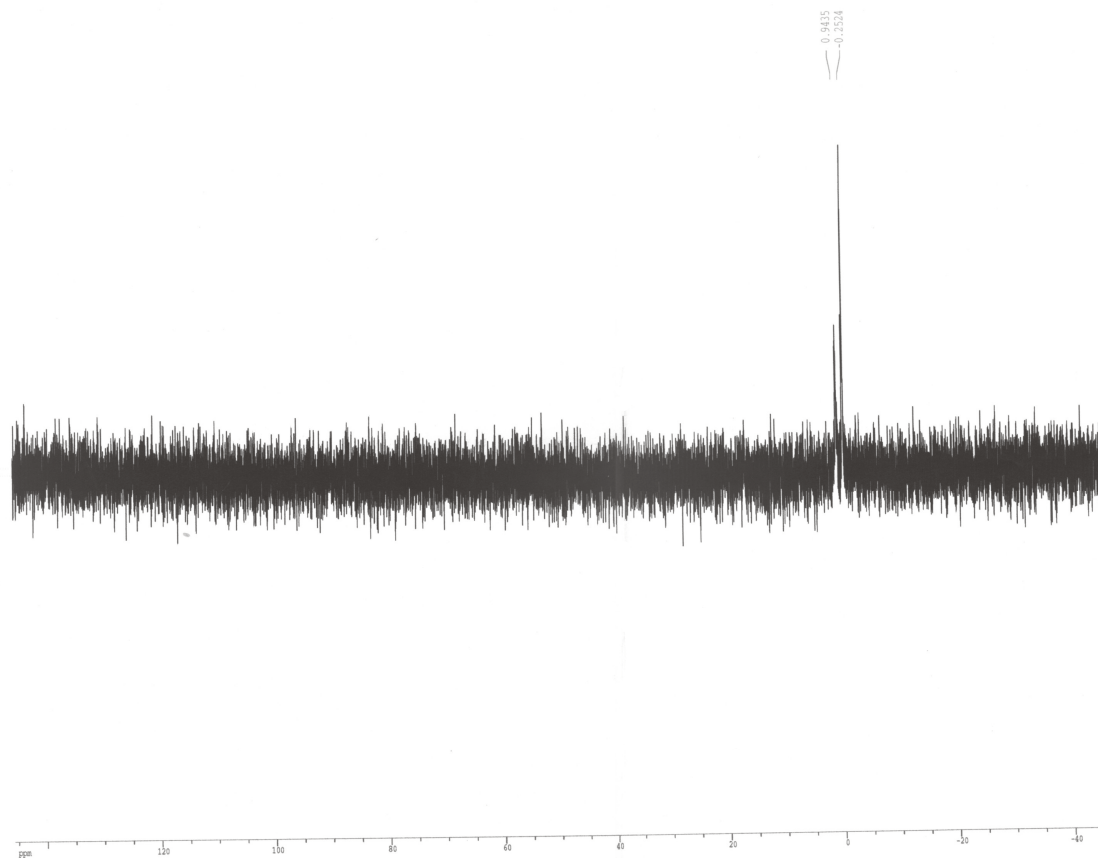


Fig. 3S: <sup>1</sup>H-NMR spectra of compound 6



**Fig. 4S:** HH-COSY - NMR spectra of compound **6**



**Fig. 5S:**  $^{31}\text{P}$ -NMR spectra of compound 6