

## Photo-induced molecular-recognition-mediated adhesion of giant vesicles

Friederike M. Mansfeld,<sup>a</sup> Guoqiang Feng<sup>b</sup> and Sijbren Otto<sup>\*c</sup>

<sup>a</sup> Department of Chemistry, University of Cambridge, Lensfield Road, Cambridge CB2 1EW, UK.

<sup>b</sup> Key Laboratory of Pesticide and Chemical Biology, Ministry of Education, Central China Normal University, Wuhan 430079, People's Republic of China.

<sup>c</sup> Centre for Systems Chemistry, Stratingh Institute, University of Groningen, The Netherlands. Fax: +31 50 363 4296; Tel: 31 50 363 8639; E-mail: s.otto@rug.nl.

### Gel Filtration

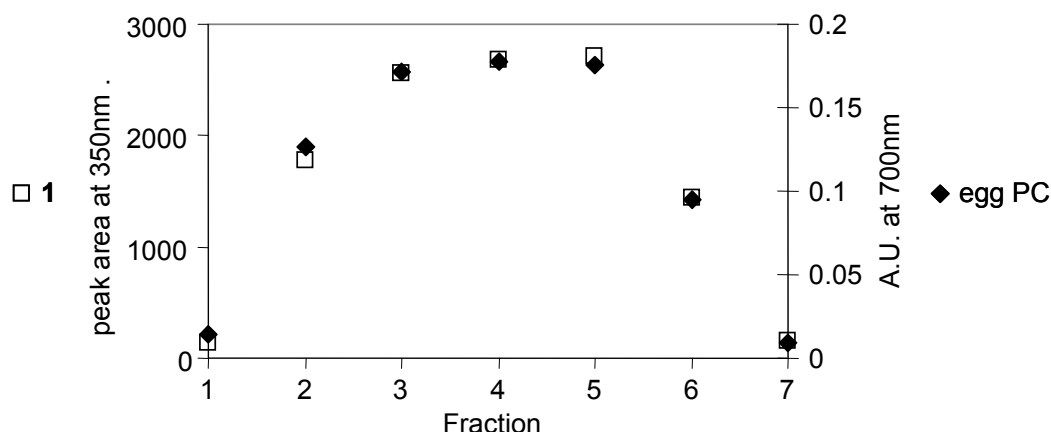


Fig. S1 Elution profiles of egg PC and **1a** upon gel filtration.

### Dynamic light scattering

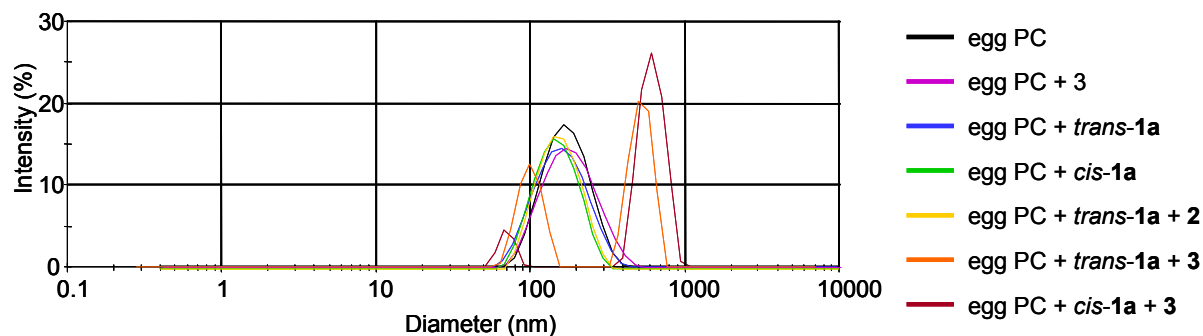
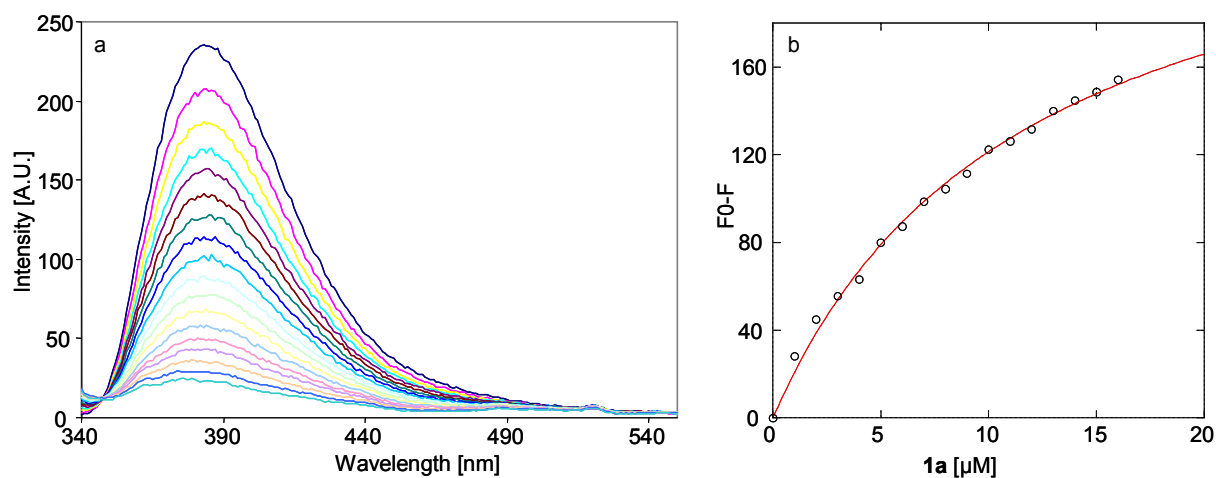
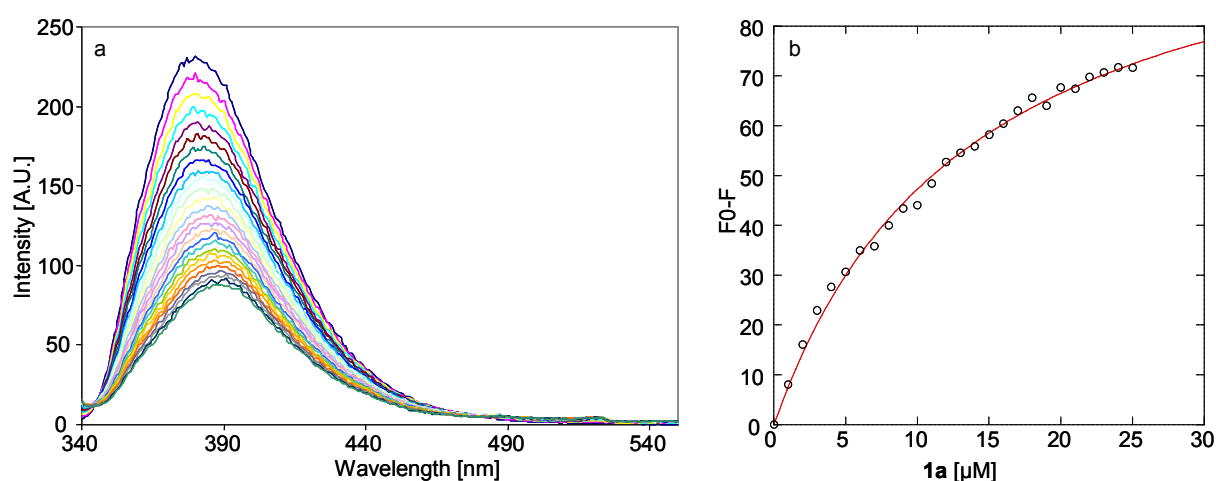


Fig. S2 Dynamic light scattering traces of 5 mM egg PC vesicles with and without 5 mol% *cis*- or *trans*-**1a** before and after addition of guests **2** or **3**.

## Fluorescence titration

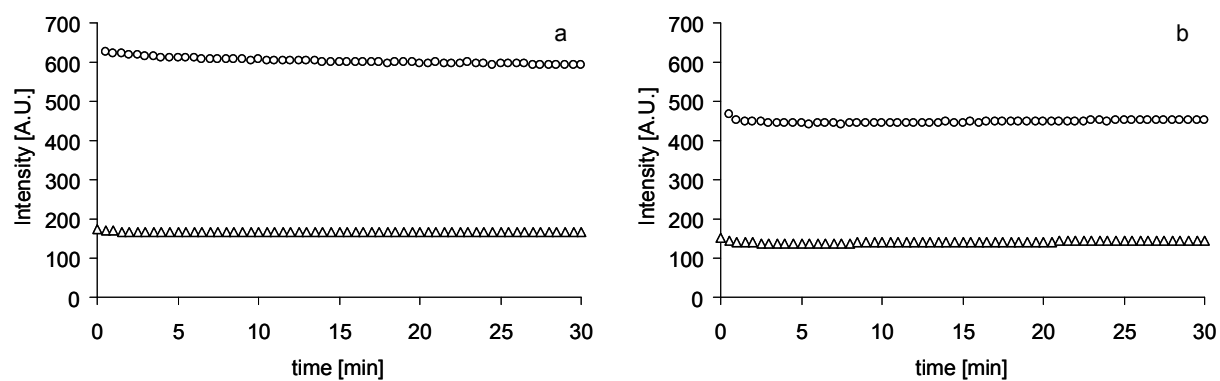


**Fig. S3** Fluorescence titration for determining the apparent binding constant of *cis*-**1a** to **3**. (a) Quenching of isoquinolinium fluorescence upon addition of egg PC vesicles containing 5 mol% *cis*-**1a** to a 50 μM solution of polymeric guest **3**. (b) Fit of the data using a naive 1:1 binding model.



**Fig. S4** Fluorescence titration for determining the apparent binding constant of *trans*-**1a** to **2**. (a) Quenching of isoquinolinium fluorescence upon addition of egg PC vesicles containing 5 mol% *trans*-**1a** to a 2 μM solution of monovalent guest **2**. (b) Fit of the data using a 1:1 binding model.

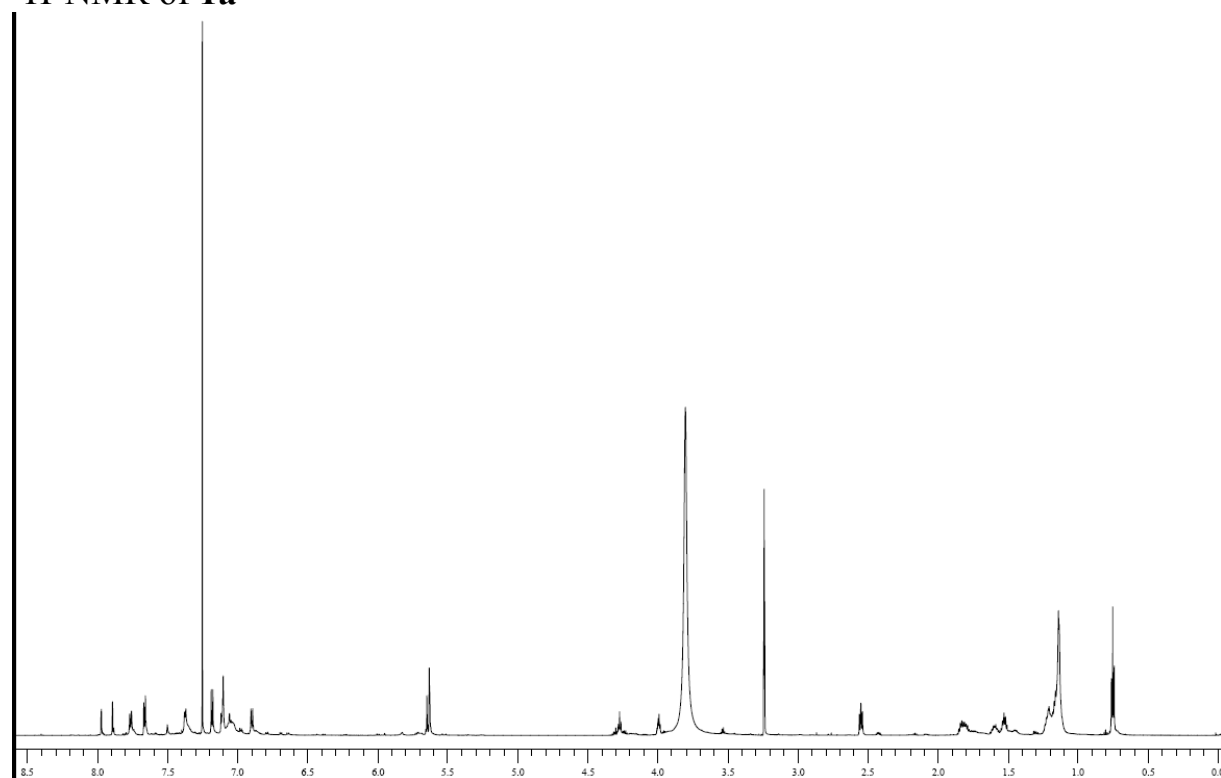
## Fusion Assay



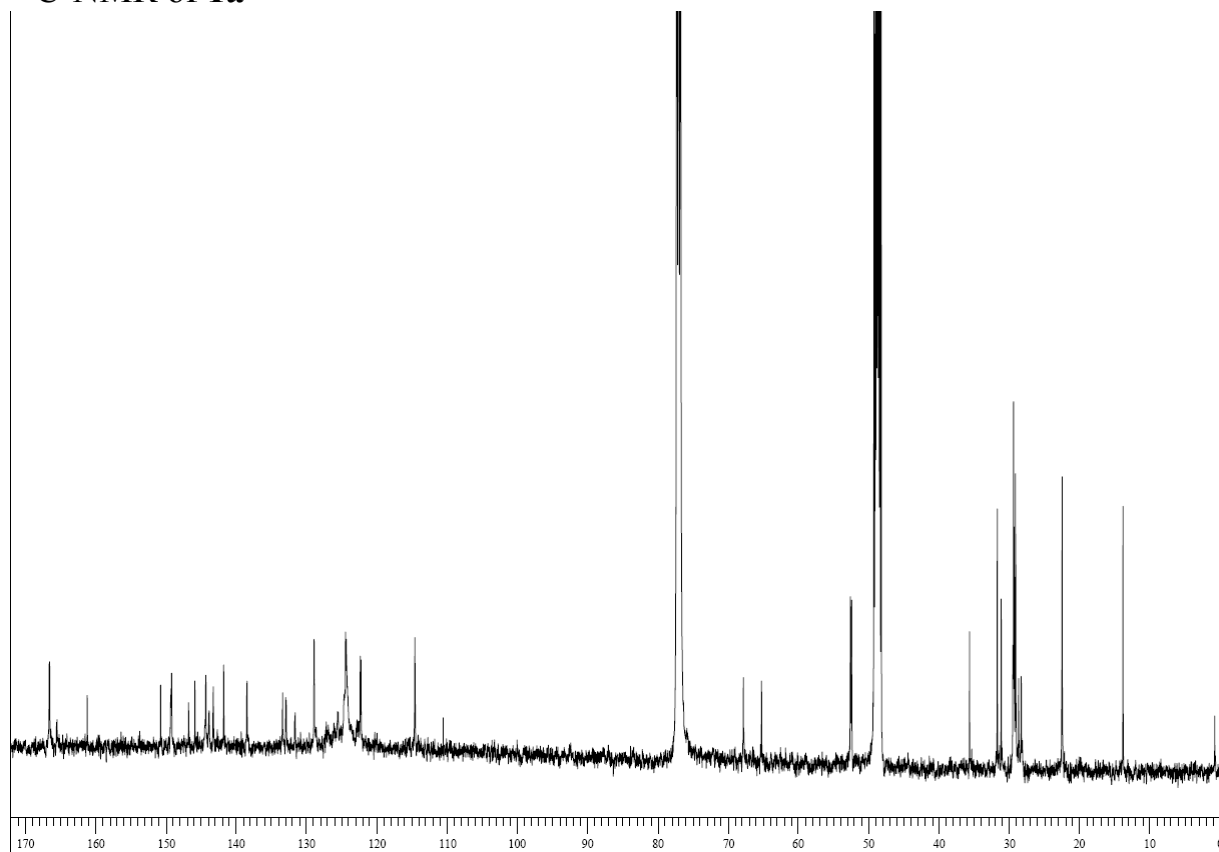
**Fig. S5** Fusion assay for LUVs containing 5 mol% **1a** in (a) the *trans*- and (b) the *cis*-conformation after addition of polyvalent guest **3**. Fluorescence emission intensities of NBD (at 530nm, triangles) and Rh (at 590nm, circles) were followed upon excitation at 470nm. The addition of **3** had no influence on fluorescence intensity.

## NMR spectra and HPLC analysis of **1a**

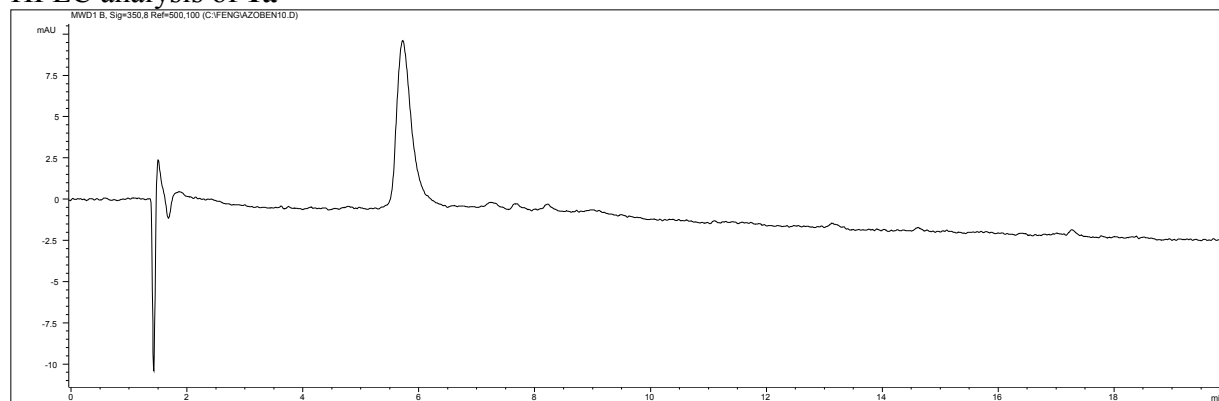
### <sup>1</sup>H-NMR of **1a**



### $^{13}\text{C}$ -NMR of **1a**



### HPLC analysis of **1a**



Conditions. Column: Eclipse XDB C8 150×4.6mm; Solvent A: water (0.1% formic acid), Solvent B: THF; gradient 0-20min 40-100% B; flow rate: 1 mL / min;  $\lambda$  350 nm; ambient temperature