

Tributyltin Hydride-Mediated Radical Cyclisation Reactions: Efficient Construction of Multiply Substituted Cyclopentanes

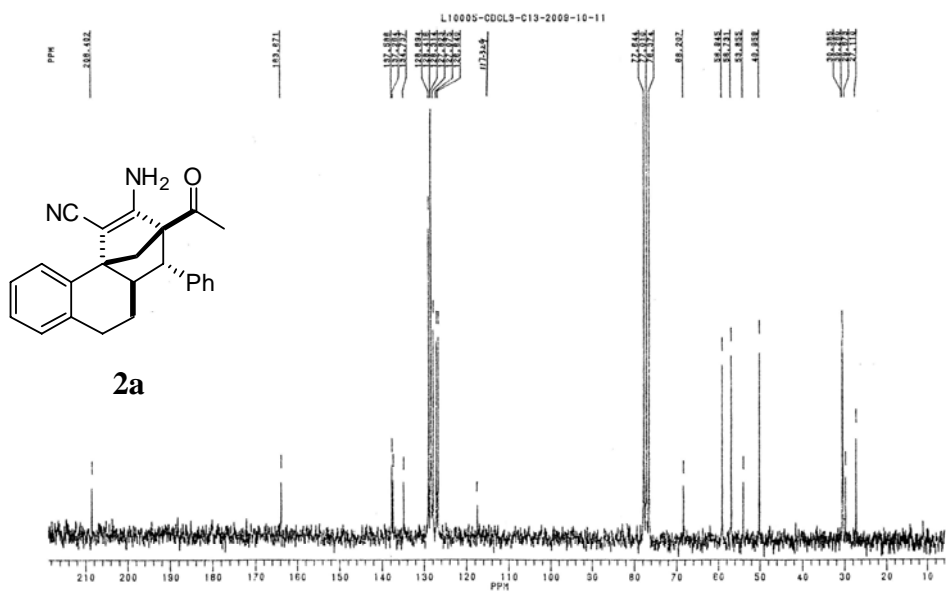
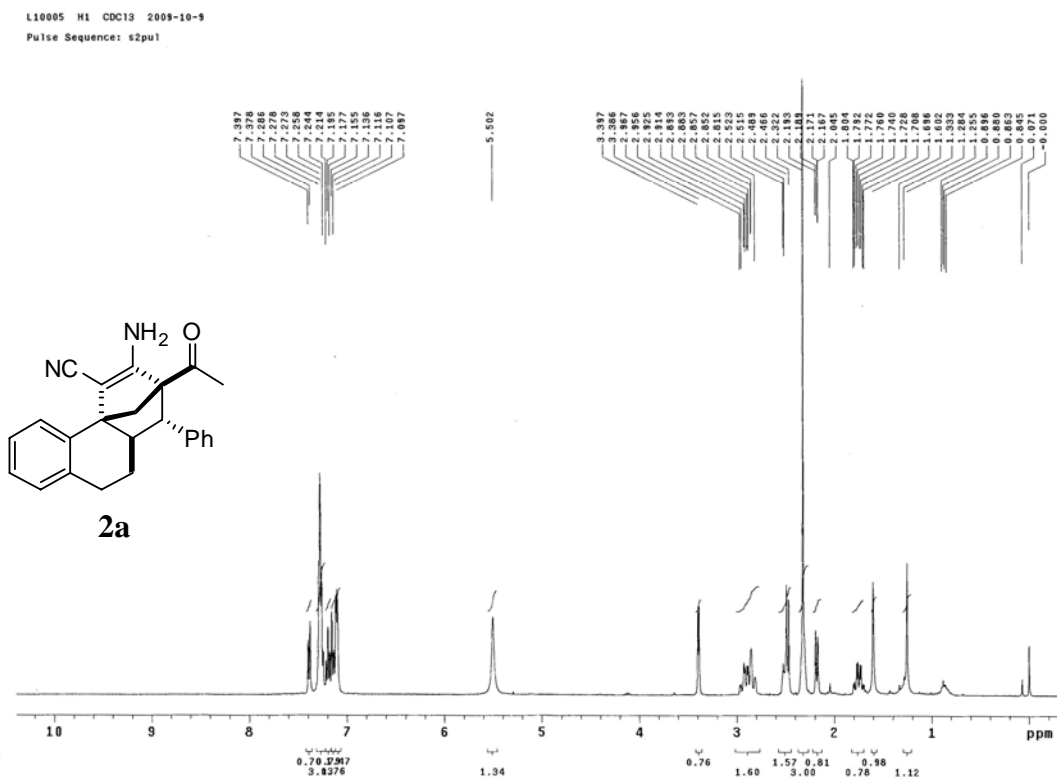
Jie Lei,^{a,b} Hai-Lei Cui,^b Rui Li,^{*a} Li Wu,^b Zheng-Yu Ding,^a and Ying-Chun Chen^{*a,b}

^a *State Key Laboratory of Biotherapy, West China Hospital, and* ^b *Key Laboratory of Drug-Targeting and Drug Delivery System of Education Ministry, West China School of Pharmacy, Sichuan University, Chengdu 610041, China; Fax: 86 28 85502609; Tel: 86 28 85502609*

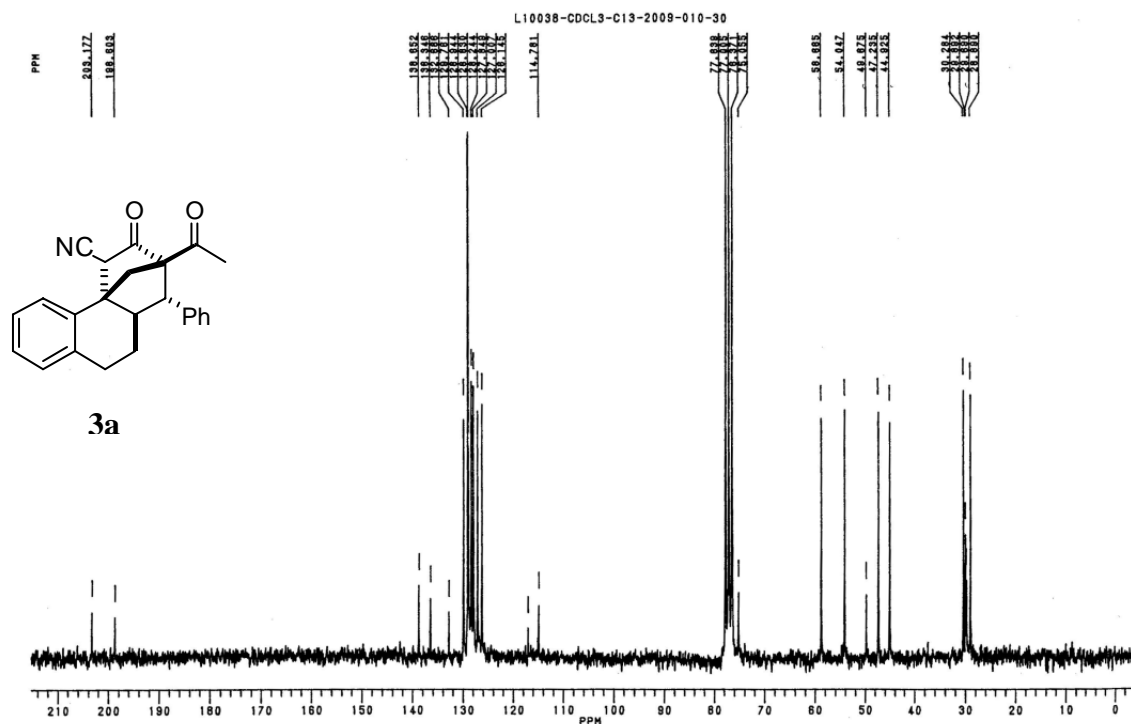
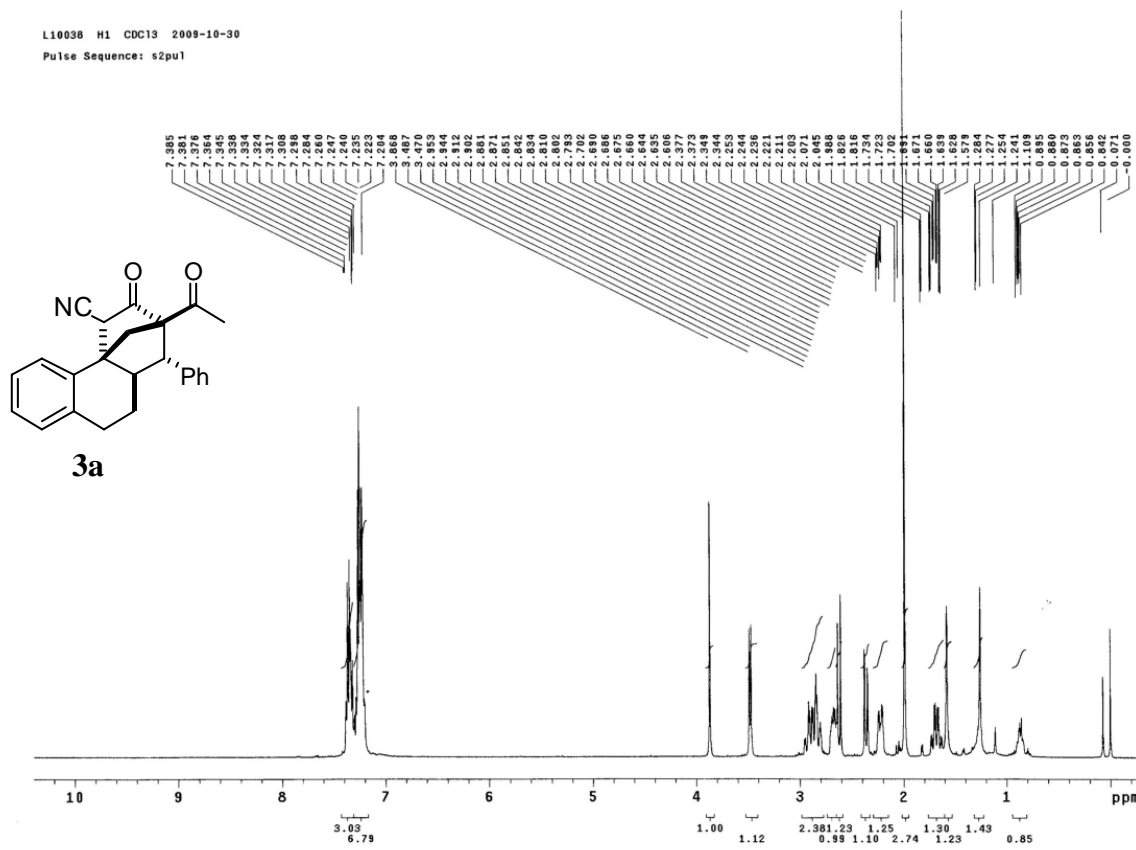
E-mail: ycchenhuaxi@yahoo.com.cn

Supplementary Information

NMR spectra and HPLC chromatograms

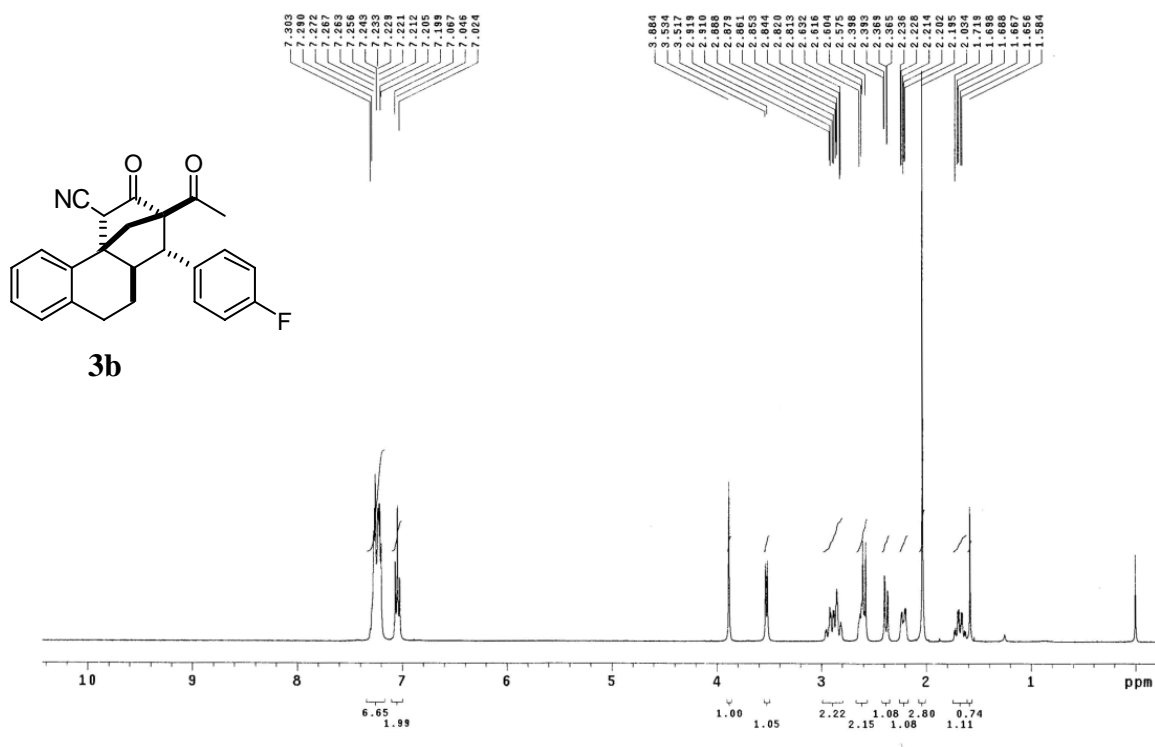


L10038 H1 CDCl3 2009-10-30
Pulse Sequence: s2pu1



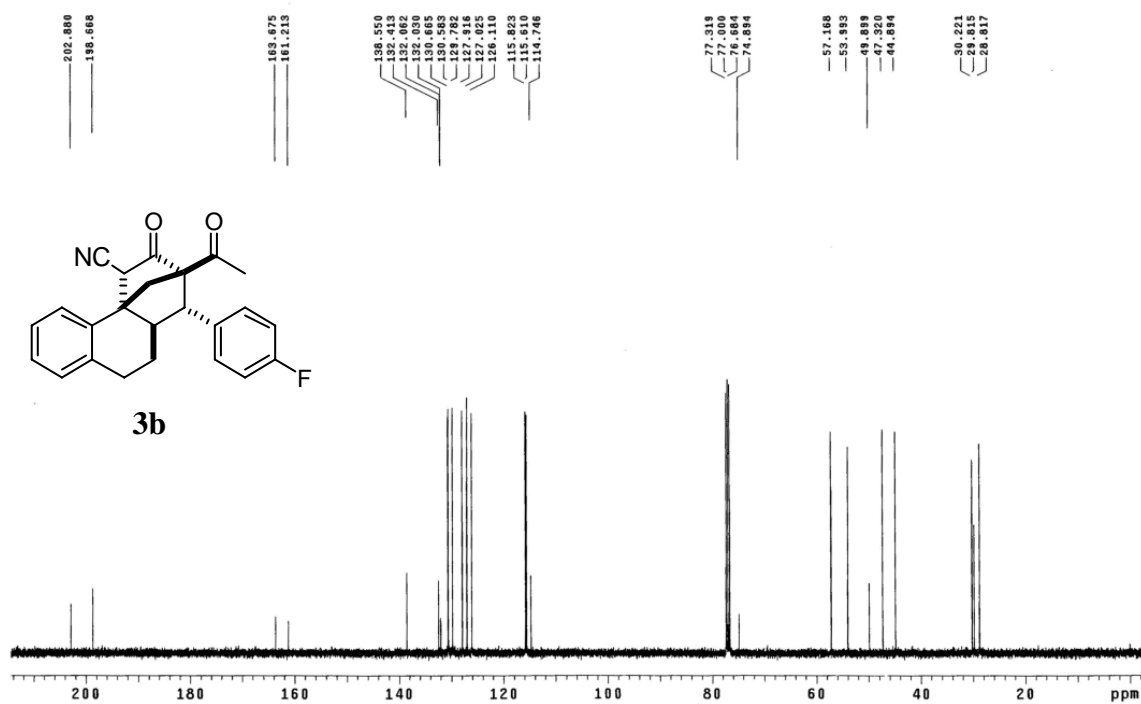
L12015-2 H1 CDC13 2009-12-14

Pulse Sequence: s2pu1



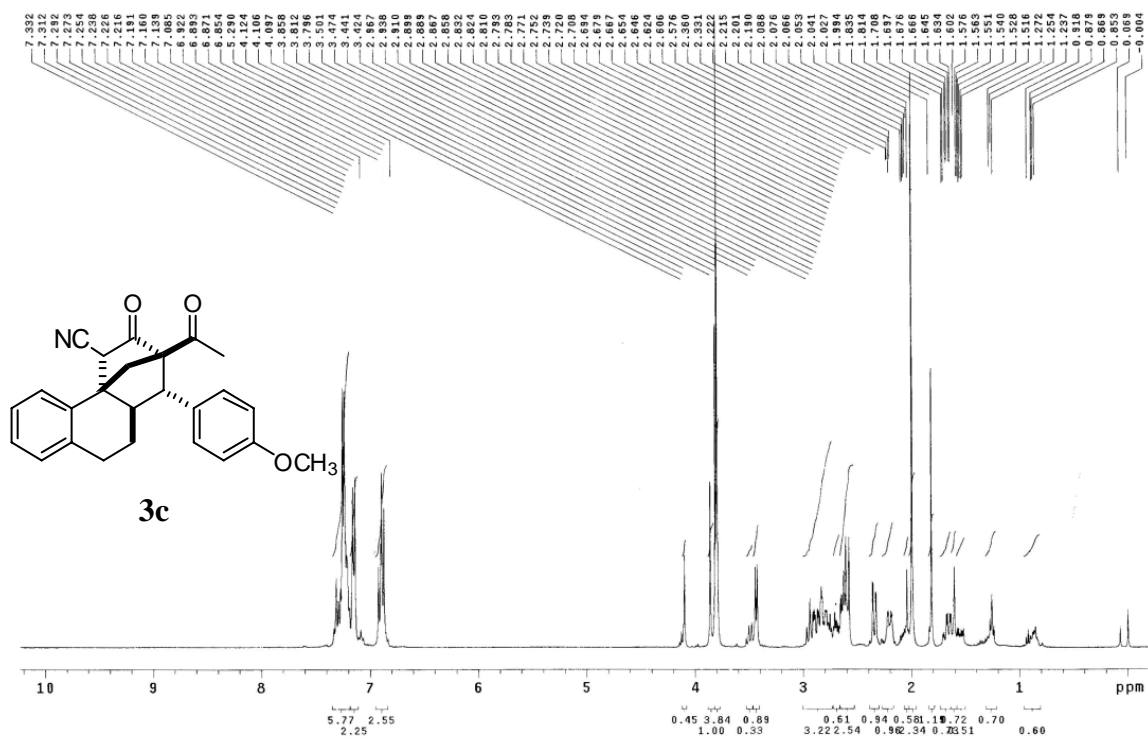
L12015-3 C13 CDC13 2009-12-20

Pulse Sequence: s2pu1



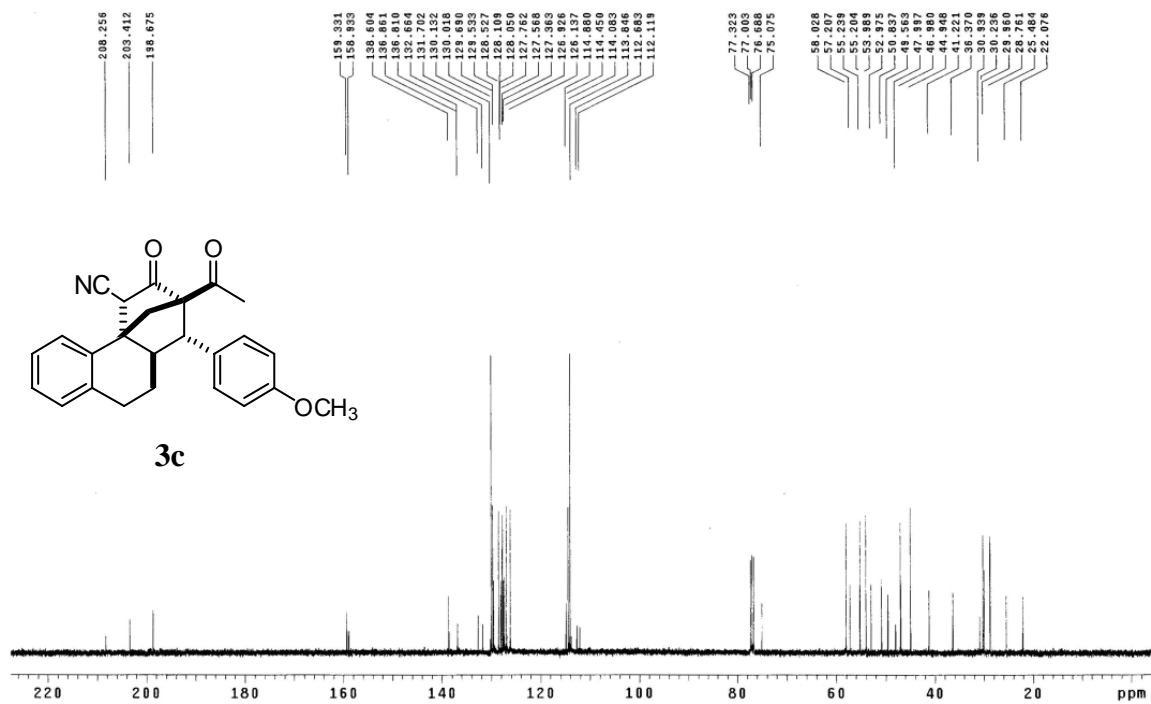
L11054 H1 CDC13 2009-11-20

Pulse Sequence: s2pul

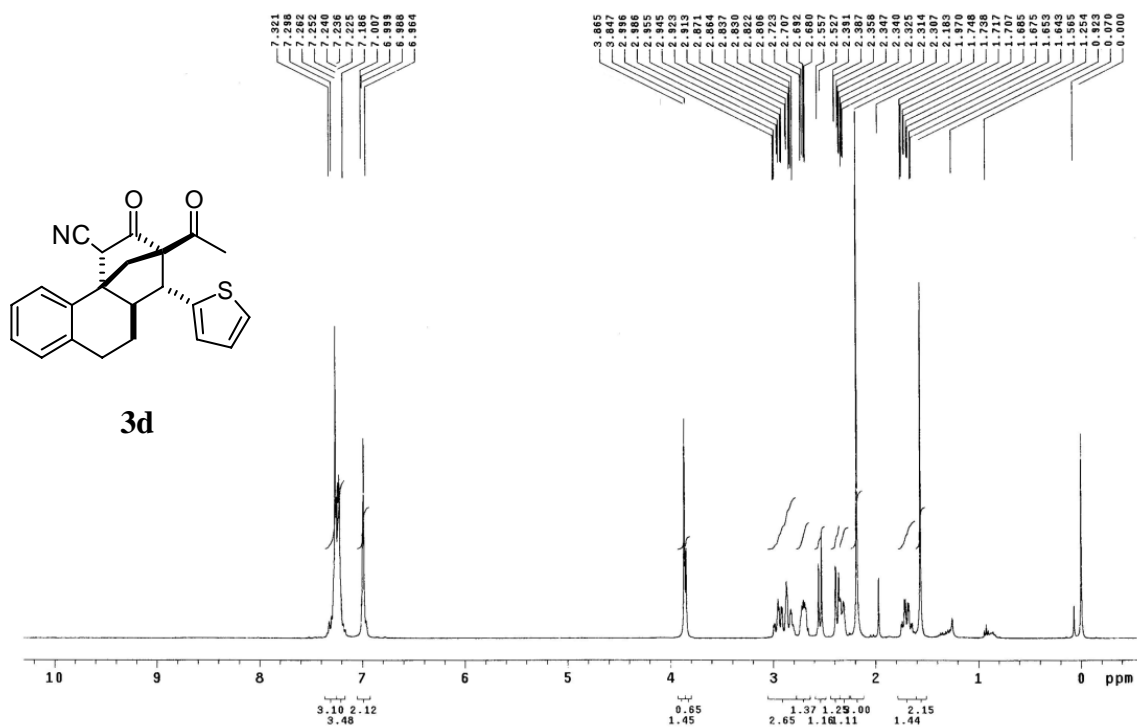


L-11054 C13 CDC13 2009-11-29

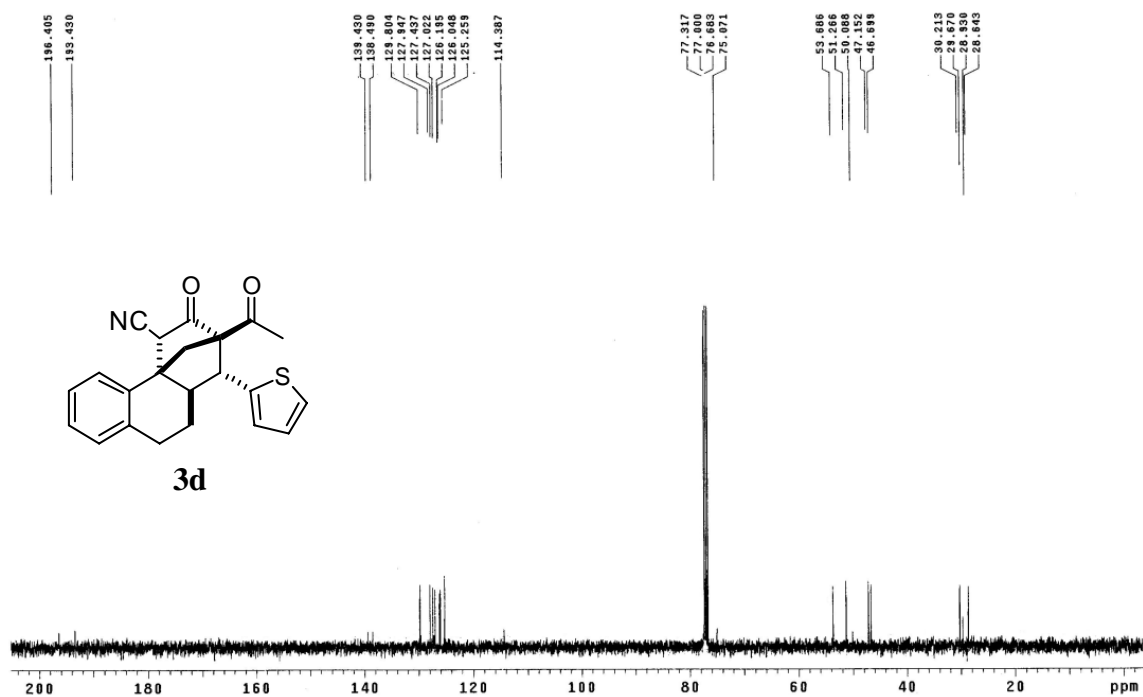
Pulse Sequence: s2pul

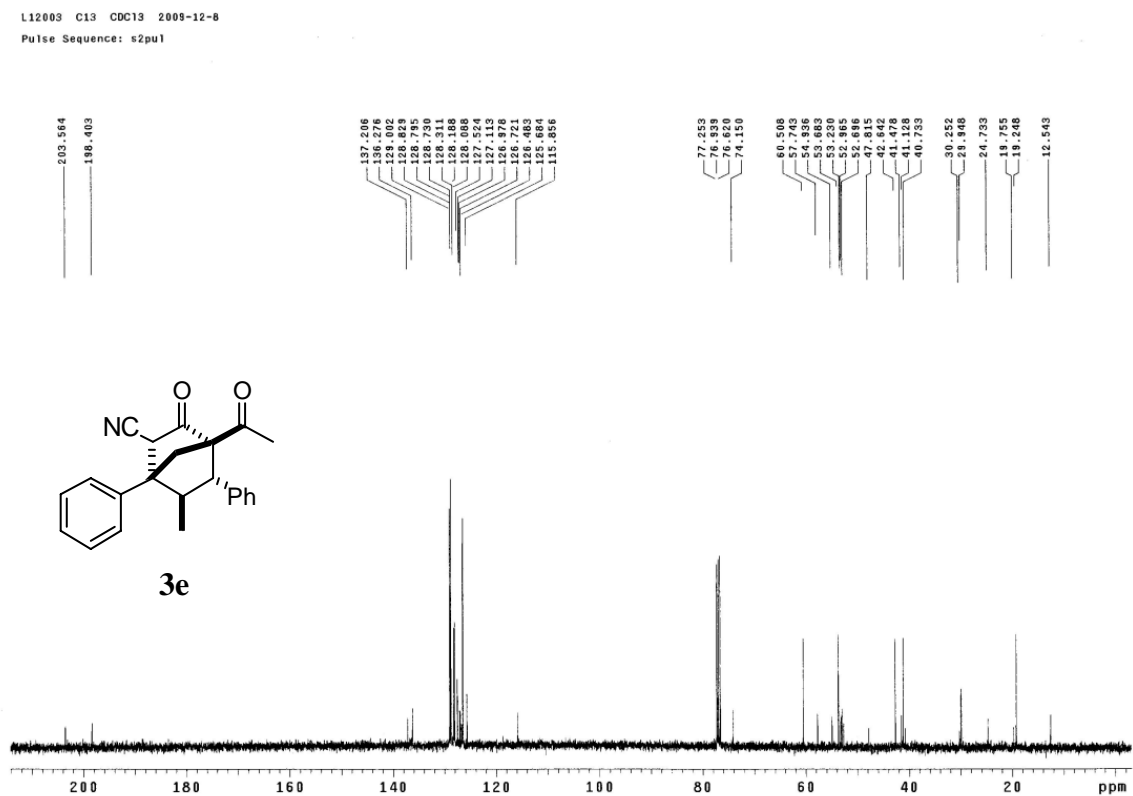
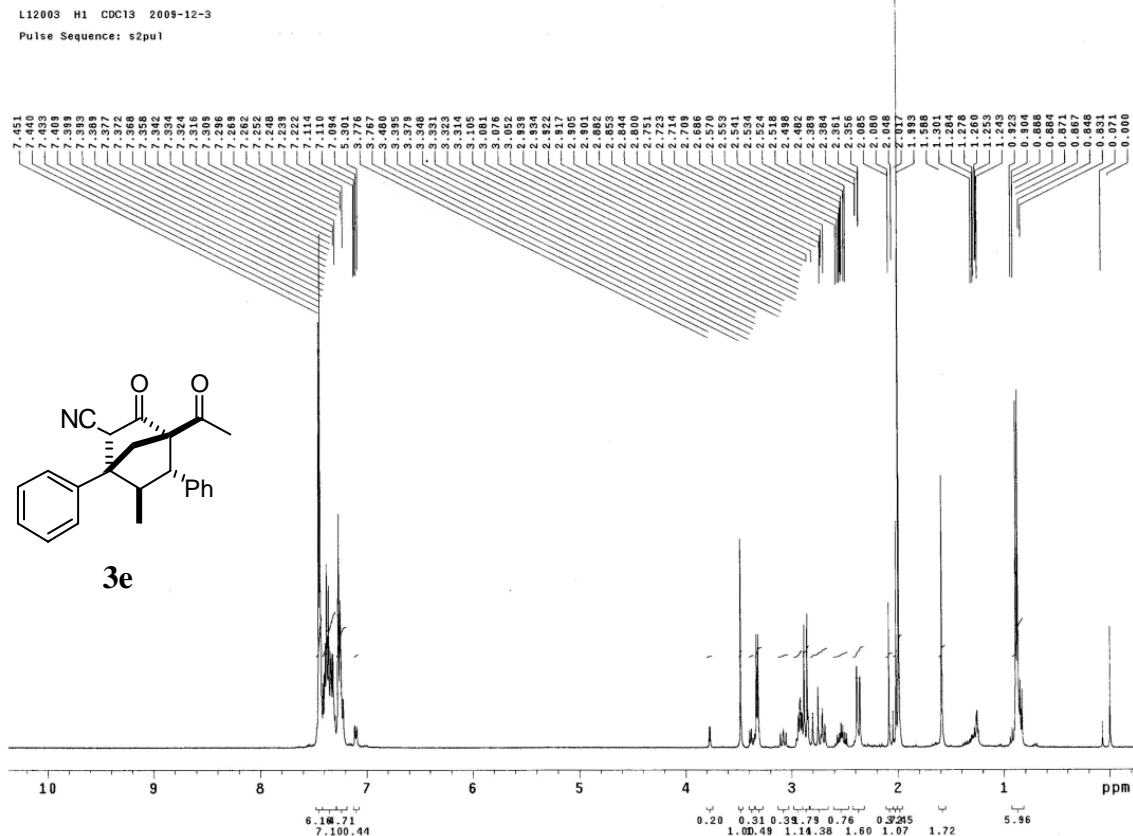


L11047 H1 CDC13 2009-11-17
Pulse Sequence: s2pu1



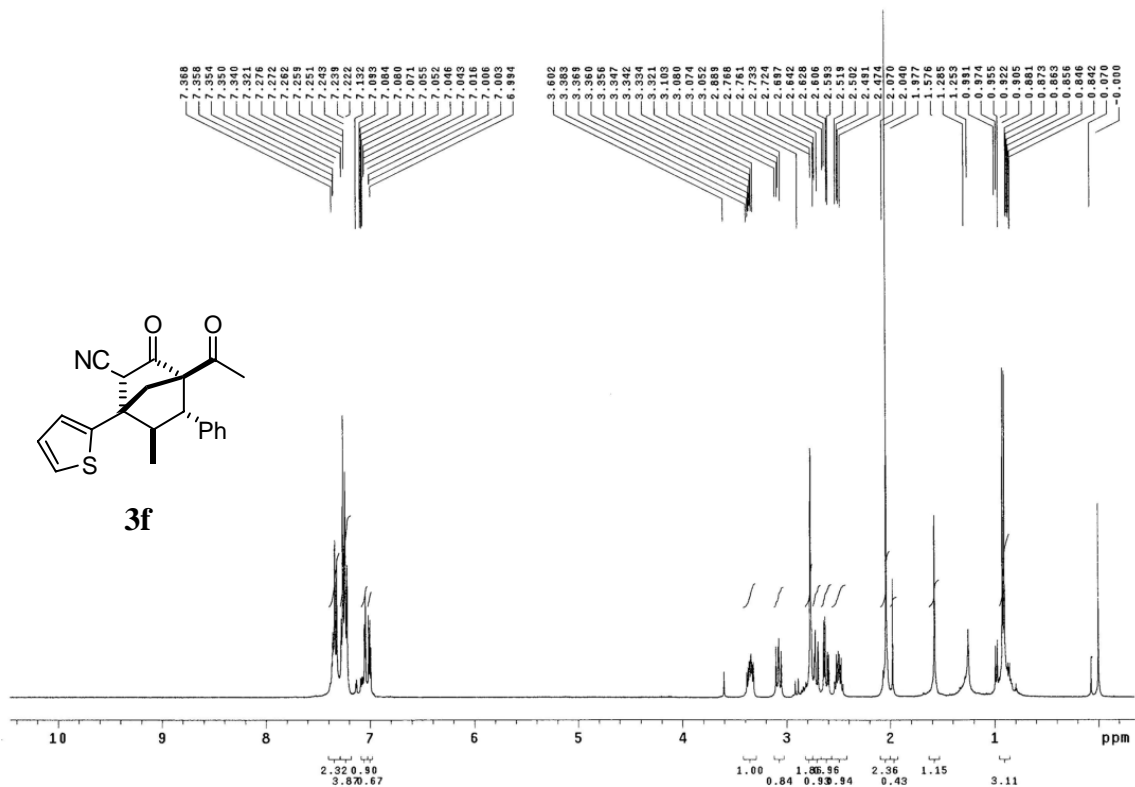
L11047-CDCL3-C13-2009-11-18
Pulse Sequence: s2pu1





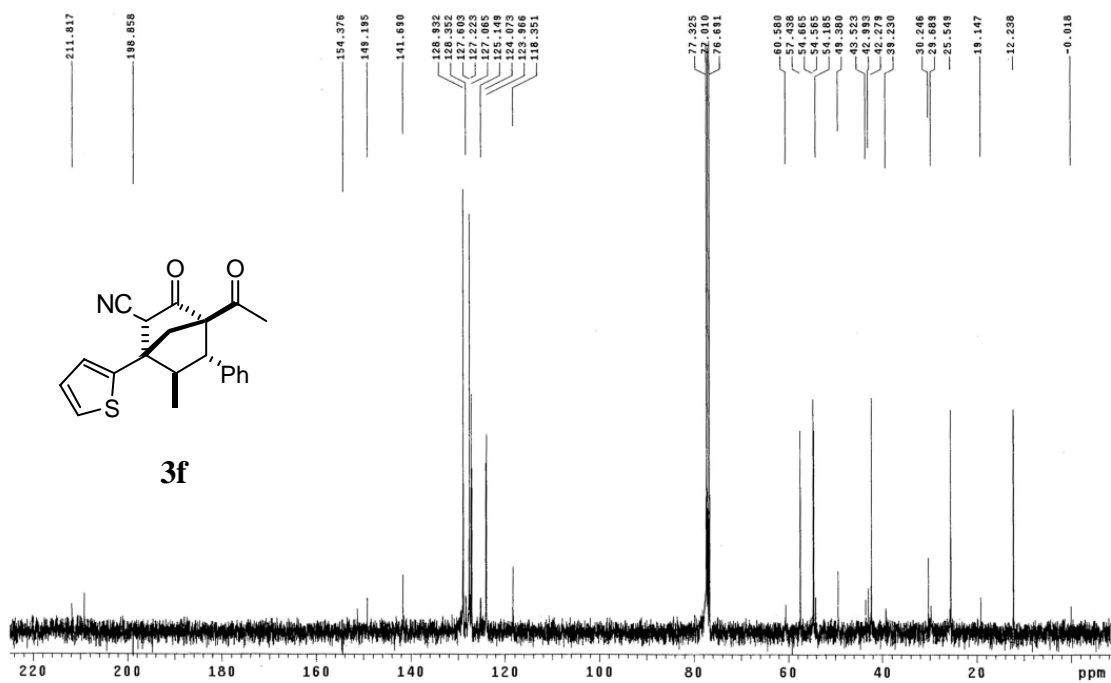
L12001 H1 CDC13 2009-12-3

Pulse Sequence: s2pu1



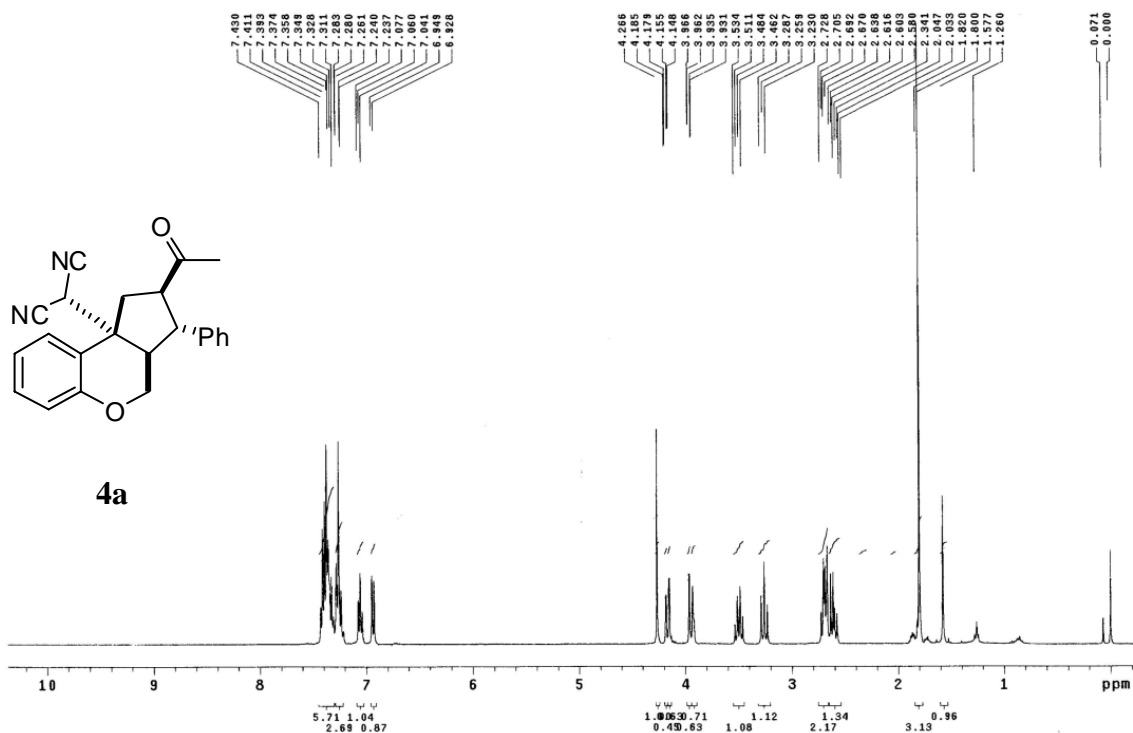
L12001-CDCl3-C13-32009-12-7

Pulse Sequence: s2pu1



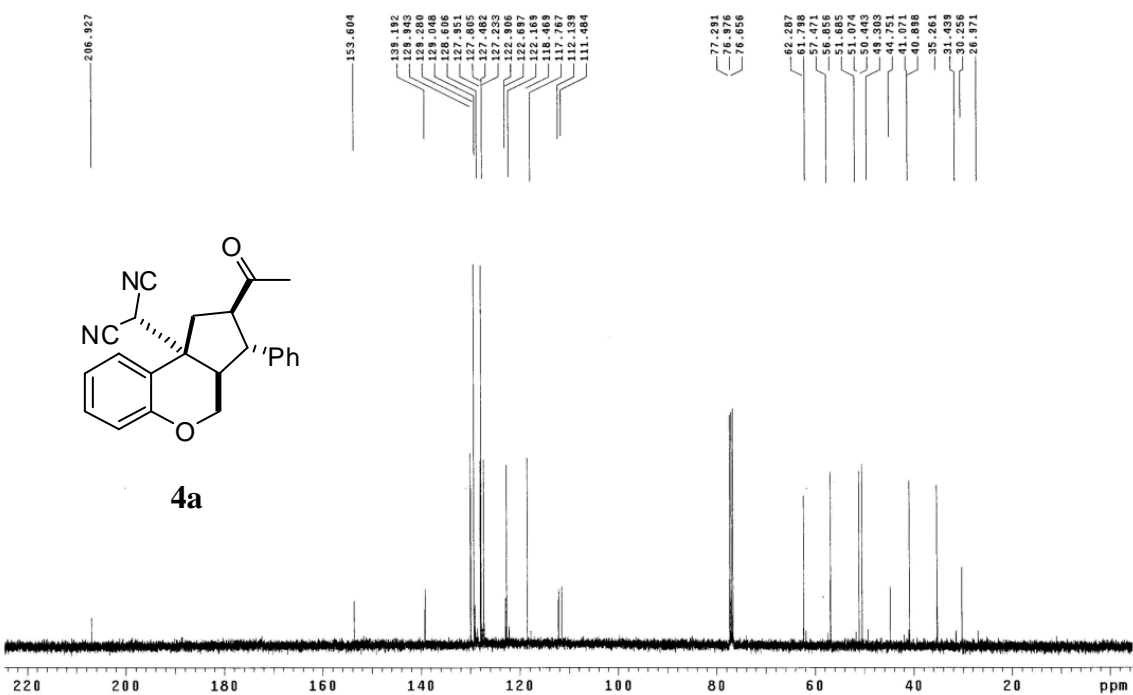
L11051 H1 CDC13 2009-11-18

Pulse Sequence: s2pu1



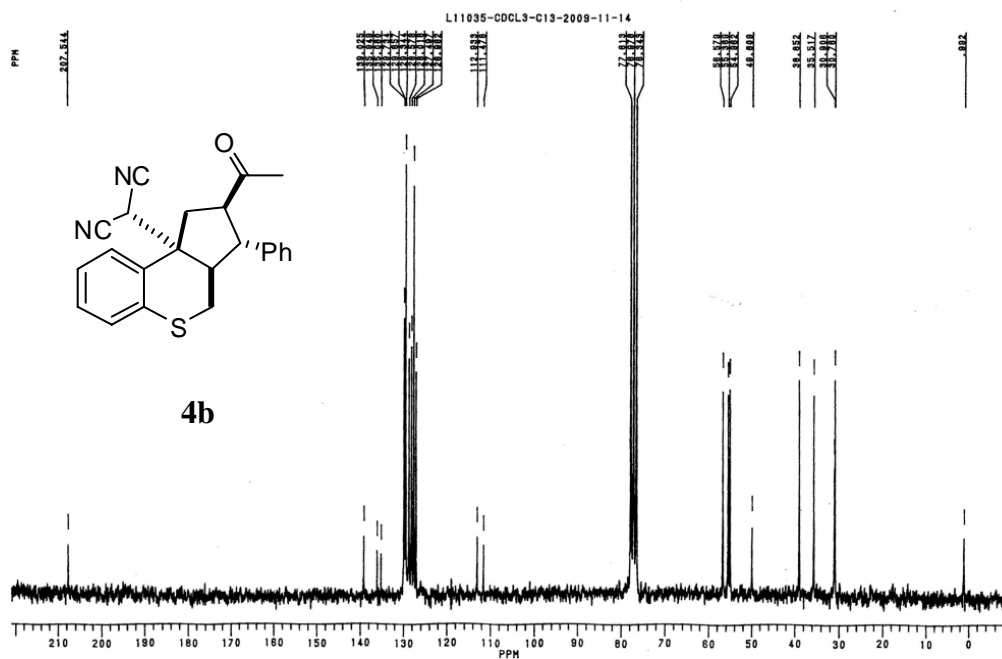
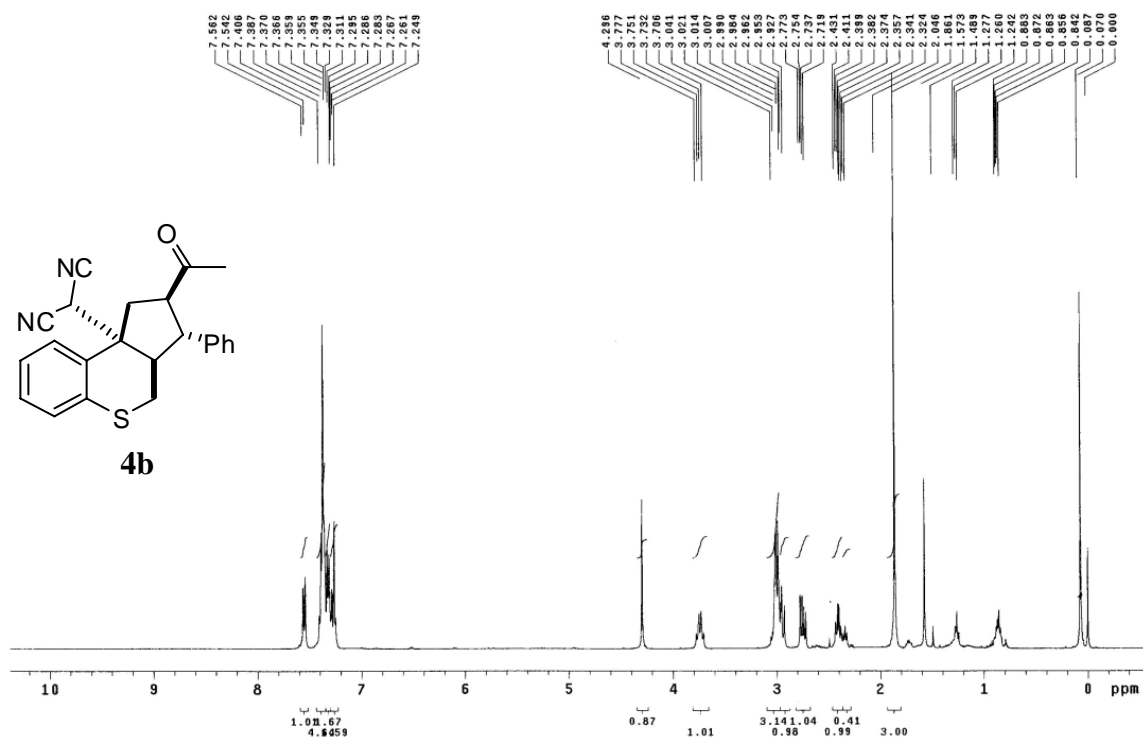
L11051 C13 CDC13 2009-11-29

Pulse Sequence: s2pu1



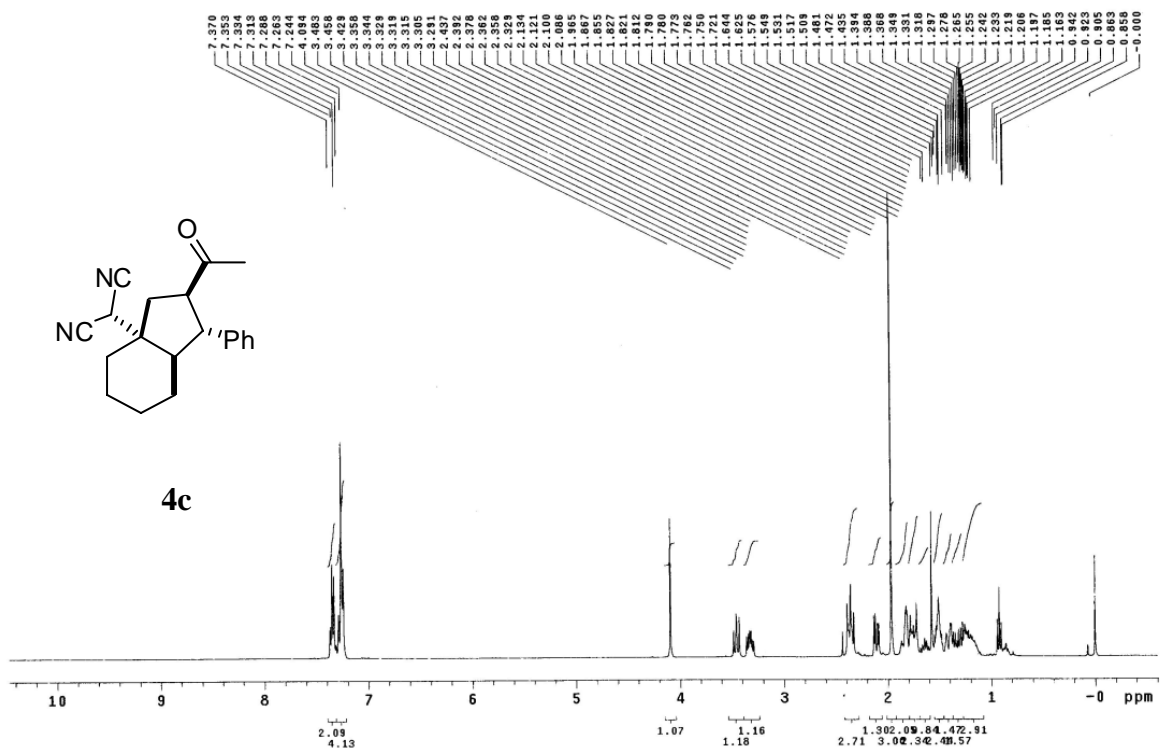
L11035 H1 CDCl3 2009-11-13

Pulse Sequence: s2pu1



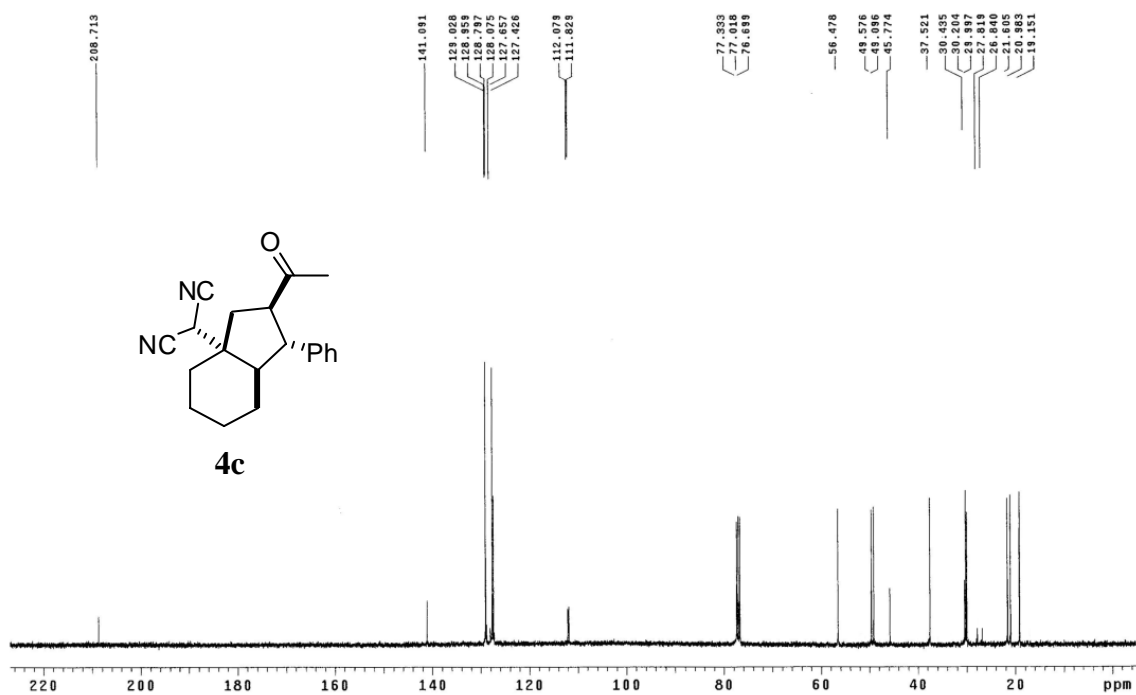
L11048 H1 CDC13 2009-11-17

Pulse Sequence: s2pu1



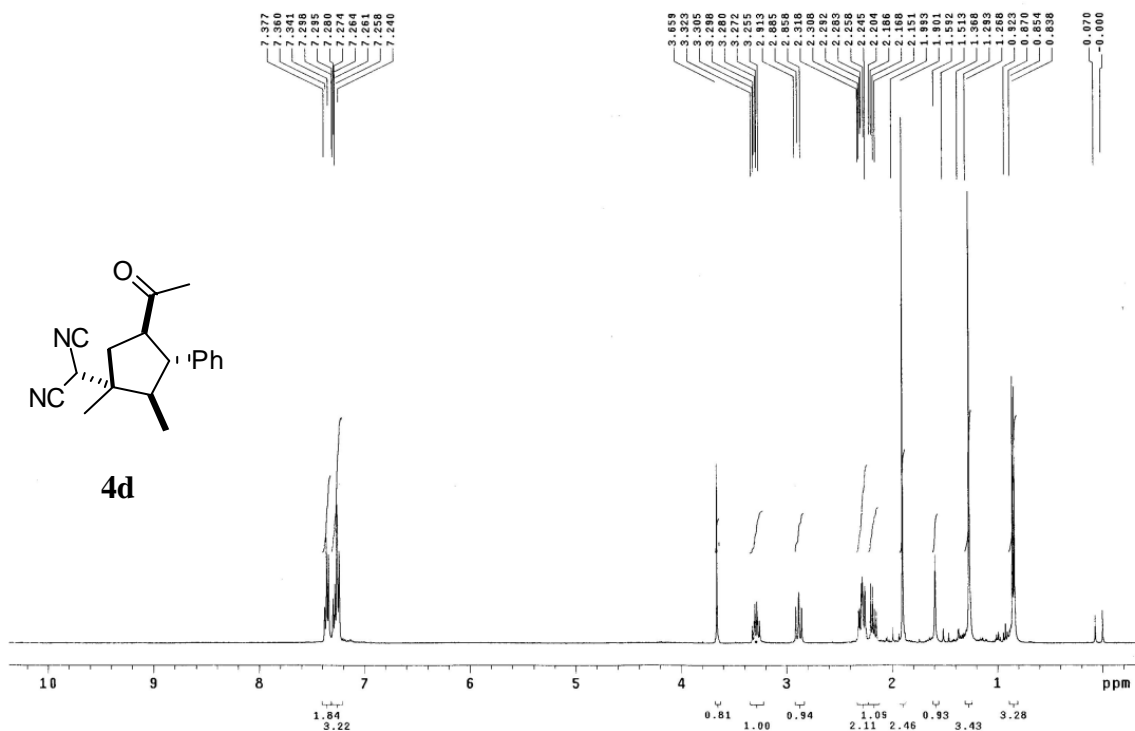
L11048 C13 CDC13 2009-12-6

Pulse Sequence: s2pu1



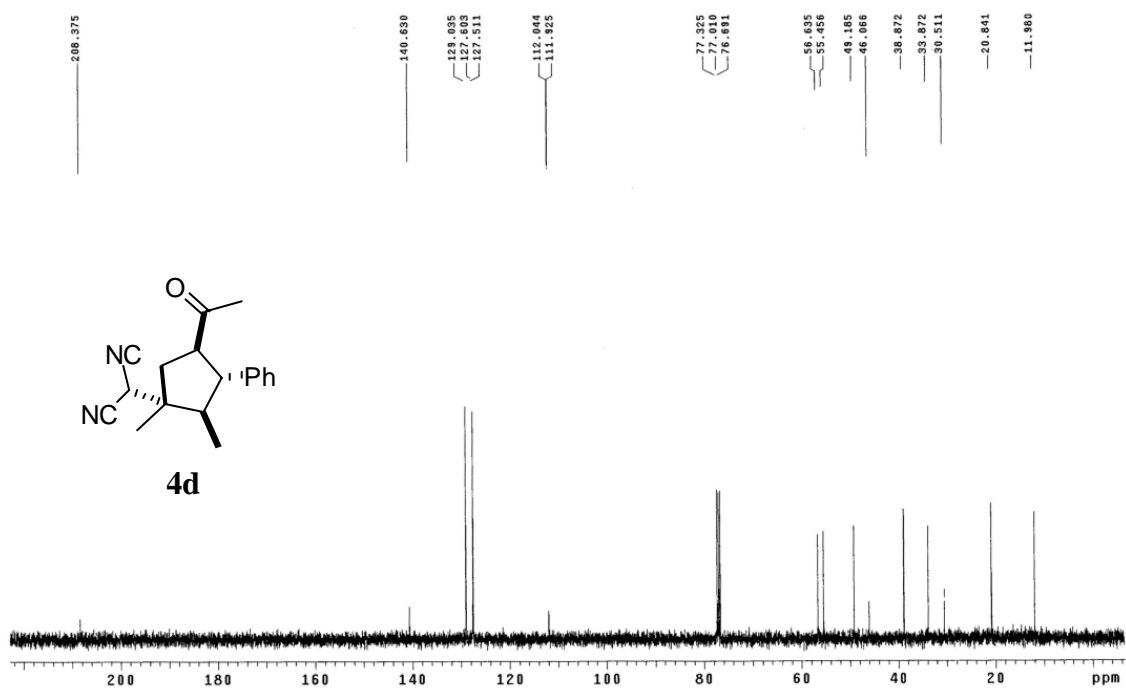
L12002 H1 CDC13 2009-12-2

Pulse Sequence: s2pu1

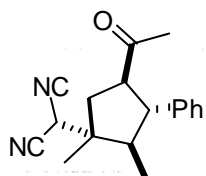


L12002-CDCl3-C13-2009-12-7

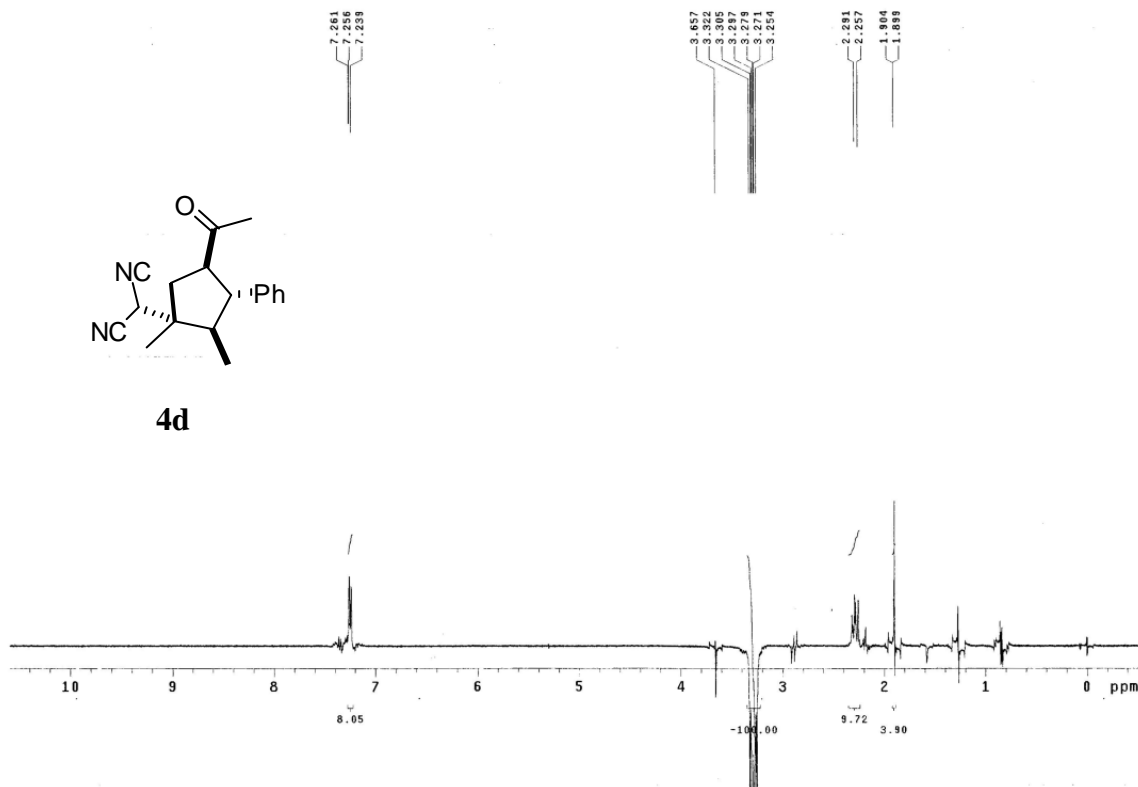
Pulse Sequence: s2pu1



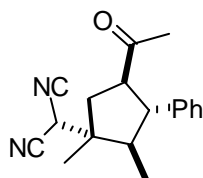
L12002 NOEDSS.29 CDC13 2010-1-26
Pulse Sequence: cyclenoe



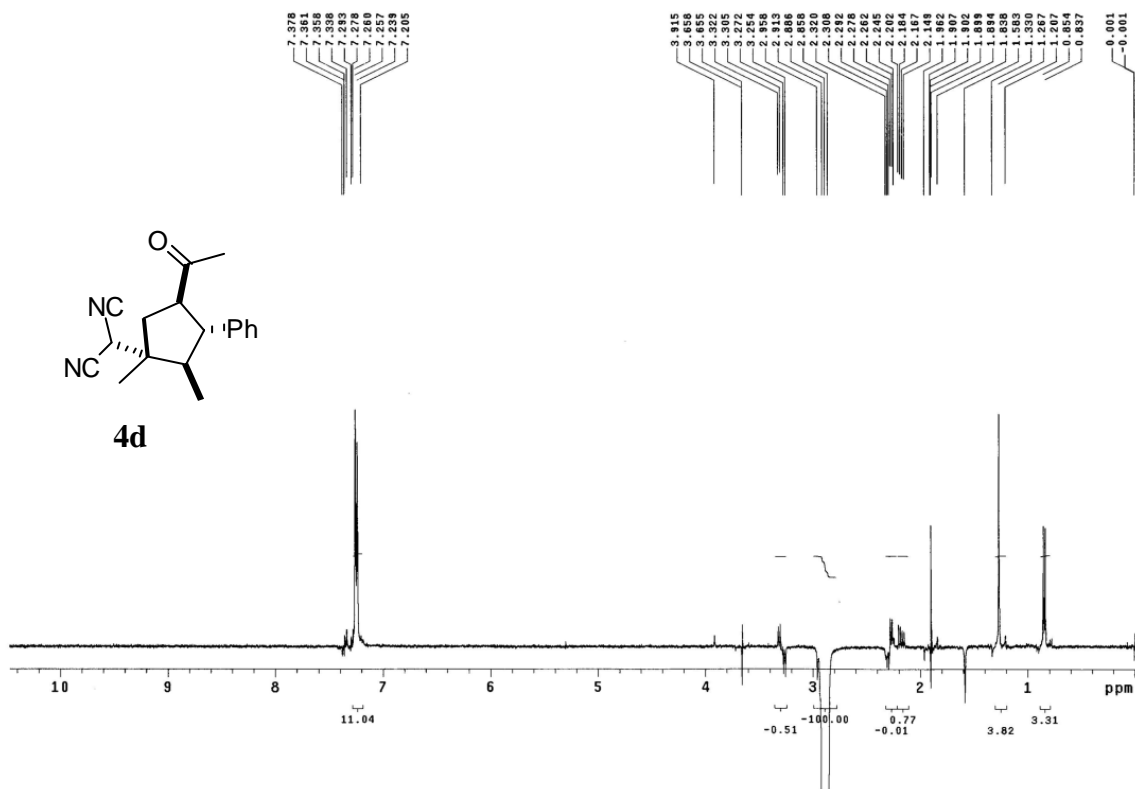
4d

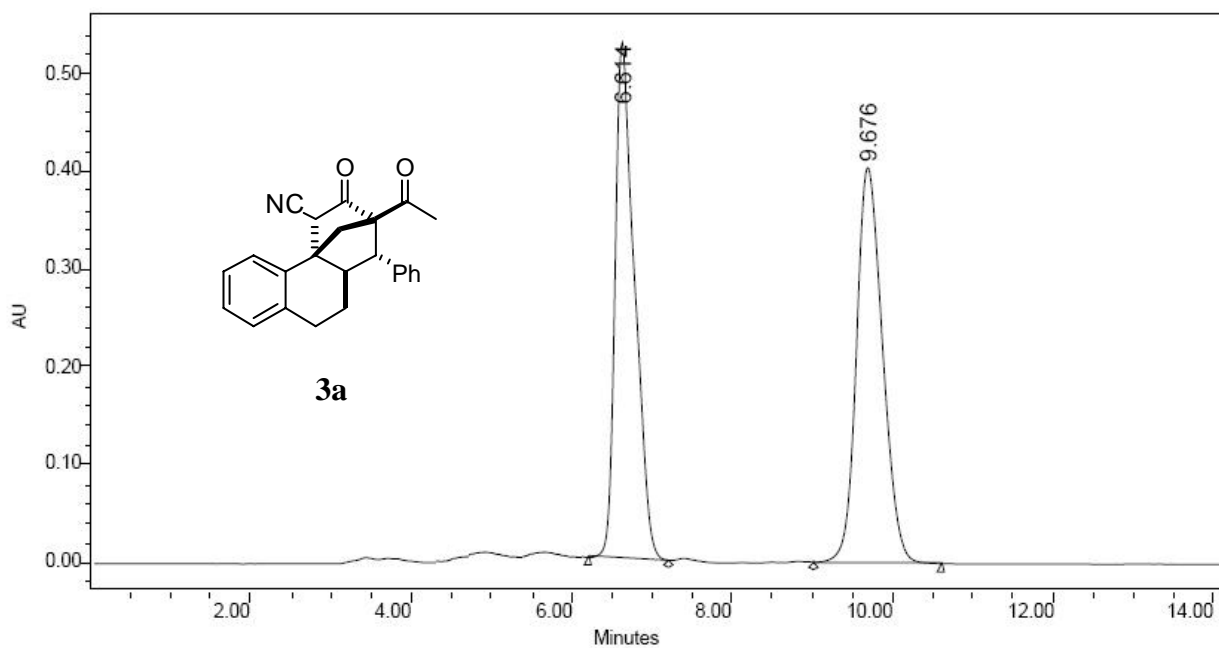


L12002-CDCl3-NOEDS2.89-2010-1-26
Pulse Sequence: cyclenoe

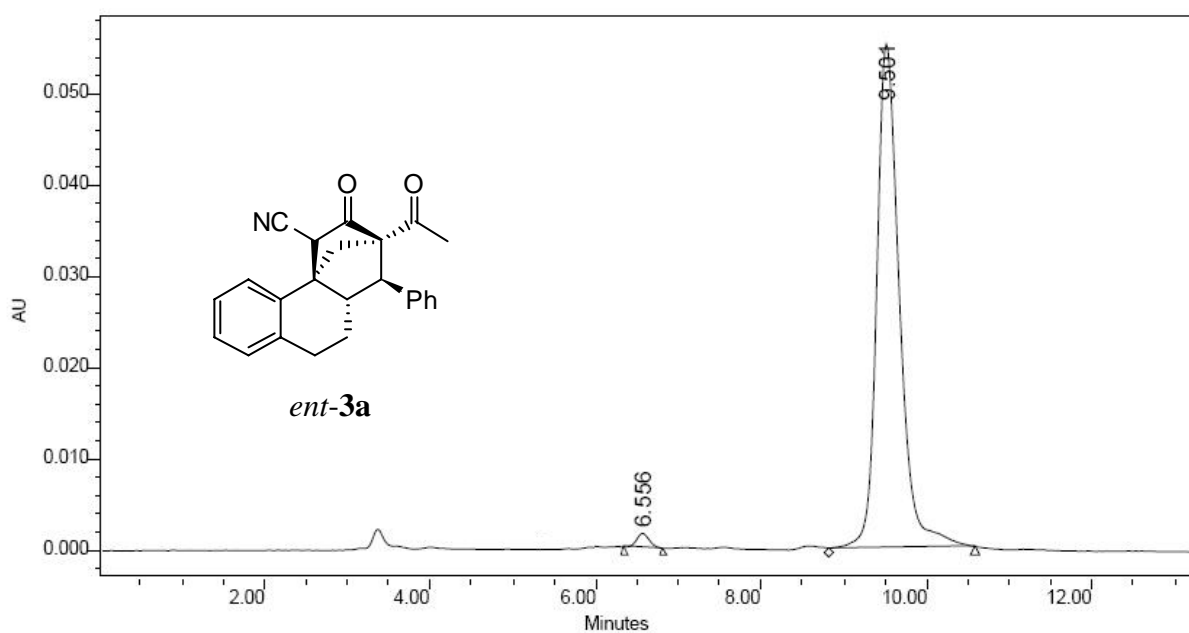


4d

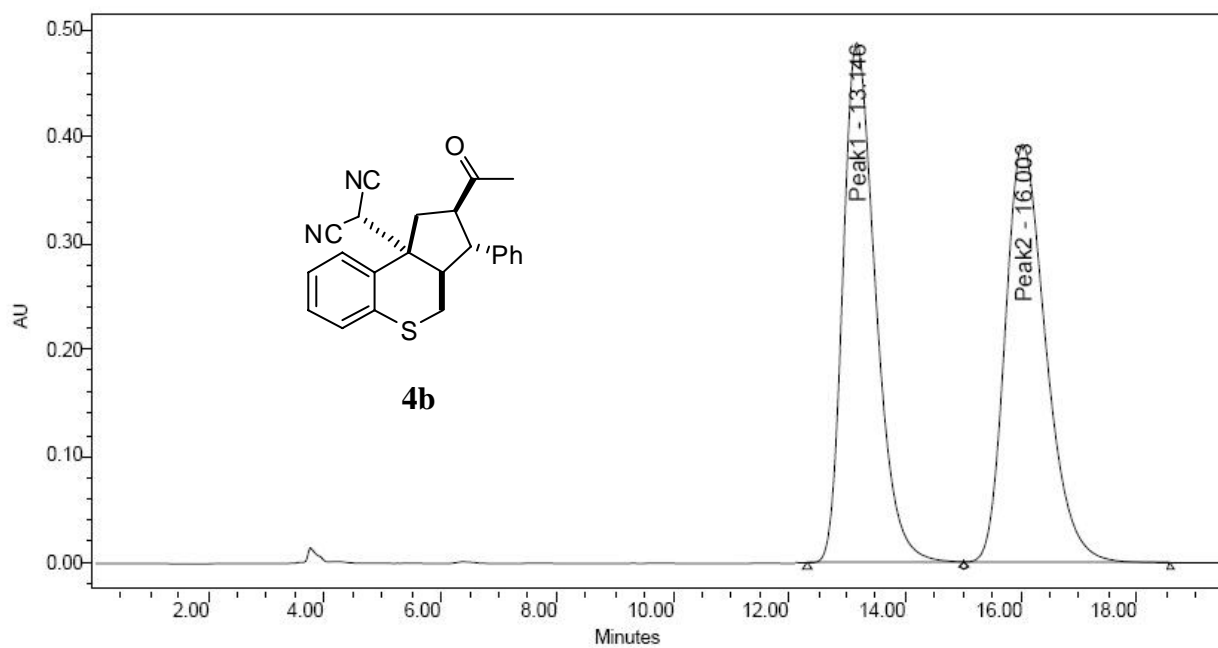




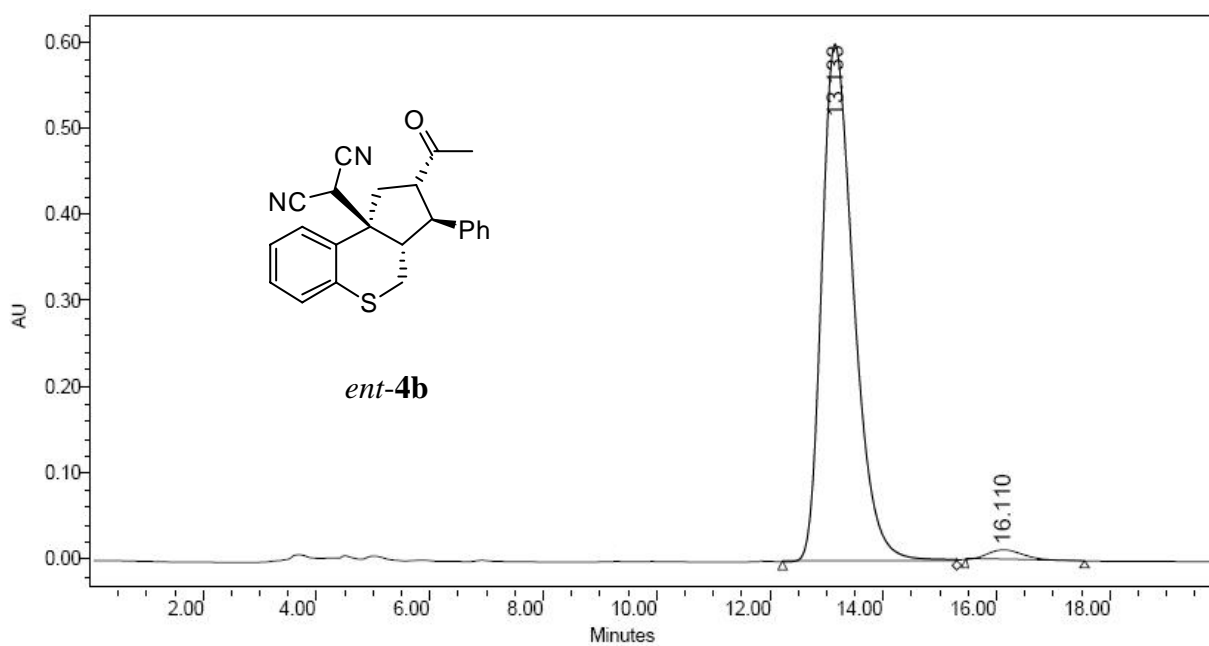
	RT (min)	Area (V*sec)	% Area	Height (V)	% Height
1	6.614	8908848	49.18	527957	56.60
2	9.676	9205168	50.82	404810	43.40



	RT (min)	Area (V*sec)	% Area	Height (V)	% Height
1	6.556	16374	1.52	1564	2.75
2	9.501	1060735	98.48	55308	97.25



Peak	Peak Name	RT (min)	Area (V *sec)	% Area	Height (V)	% Height
1	Peak1	13.146	19116643	50.02	488513	55.40
2	Peak2	16.003	19102651	49.98	393207	44.60



Peak	RT (min)	Area (V *sec)	% Area	Height (V)	% Height
1	13.133	23633564	97.81	600281	98.07
2	16.110	529702	2.19	11783	1.93