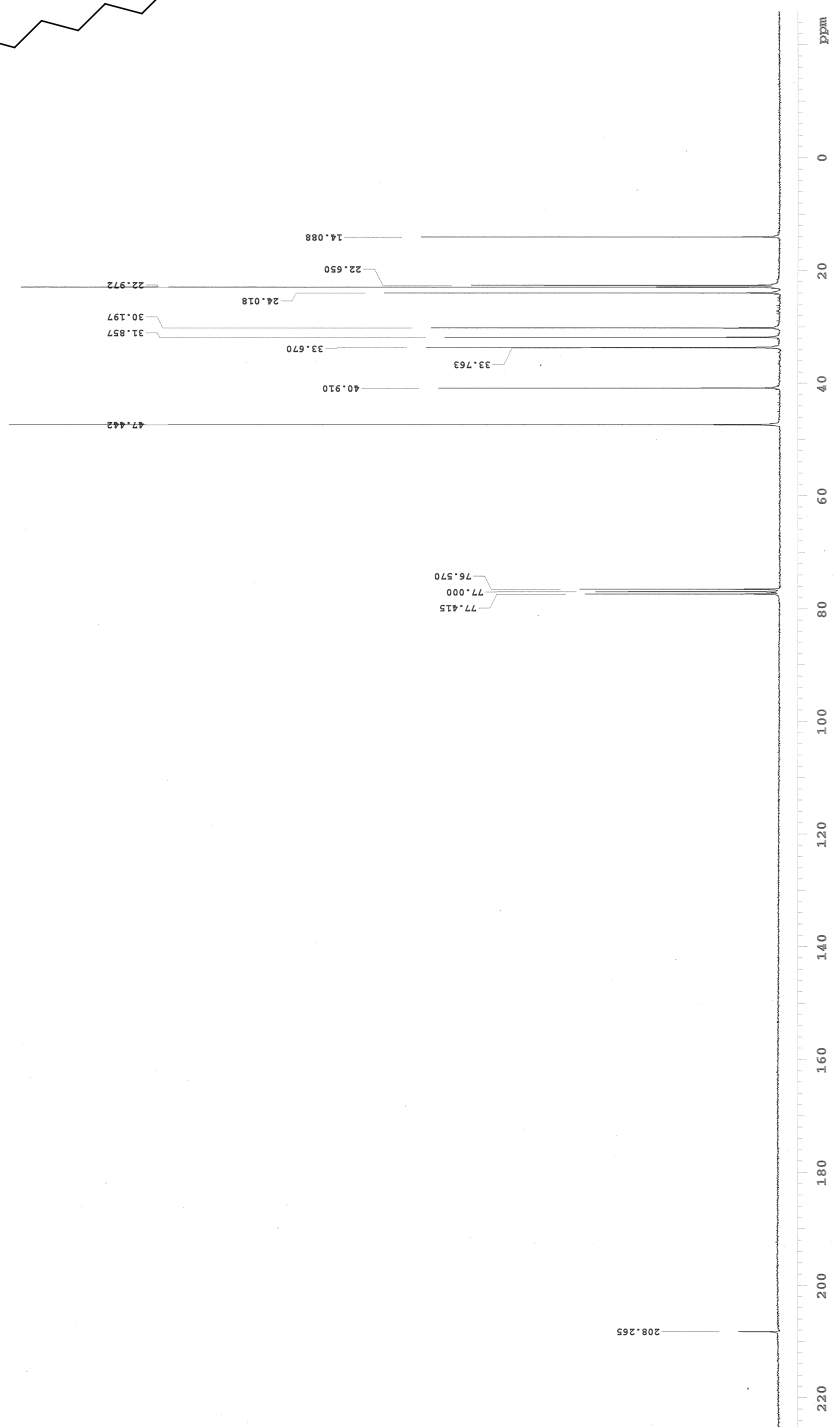
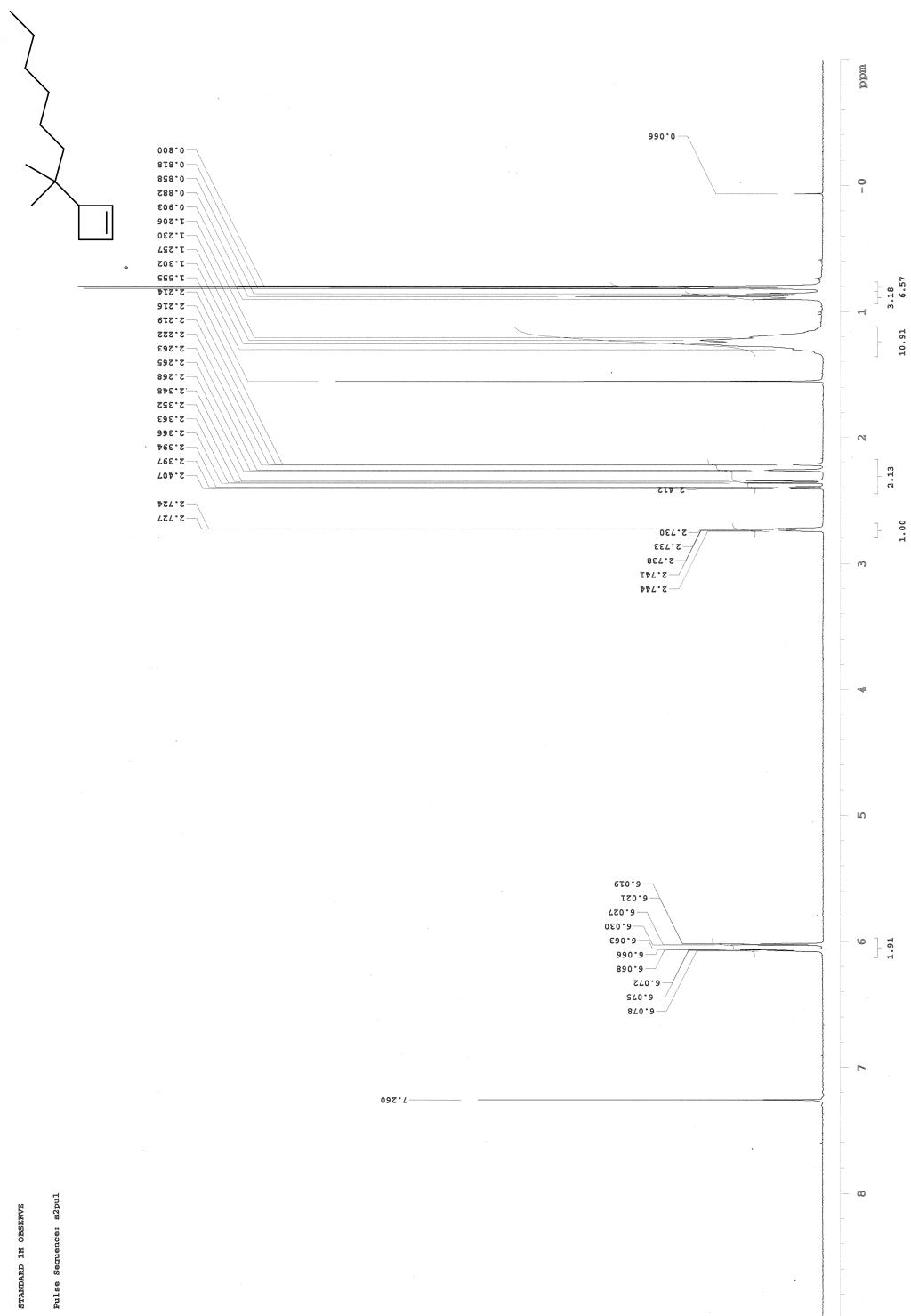
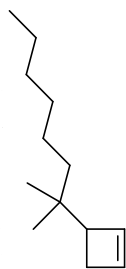


13C OBSERVE

Pulse Sequence: zgpg30

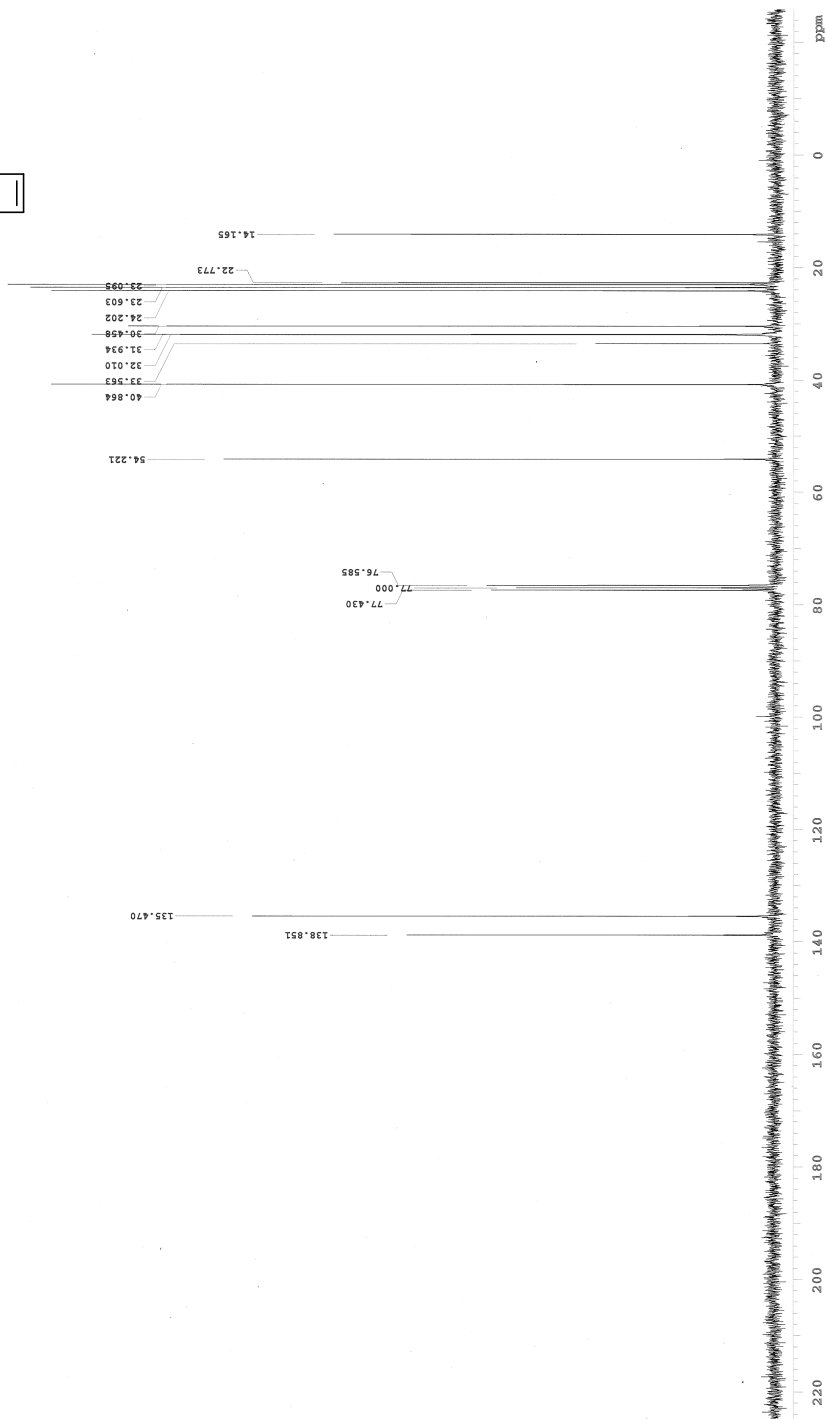


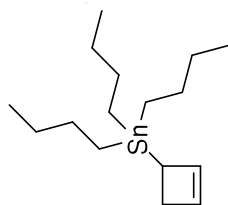




1JC OBSERVEF

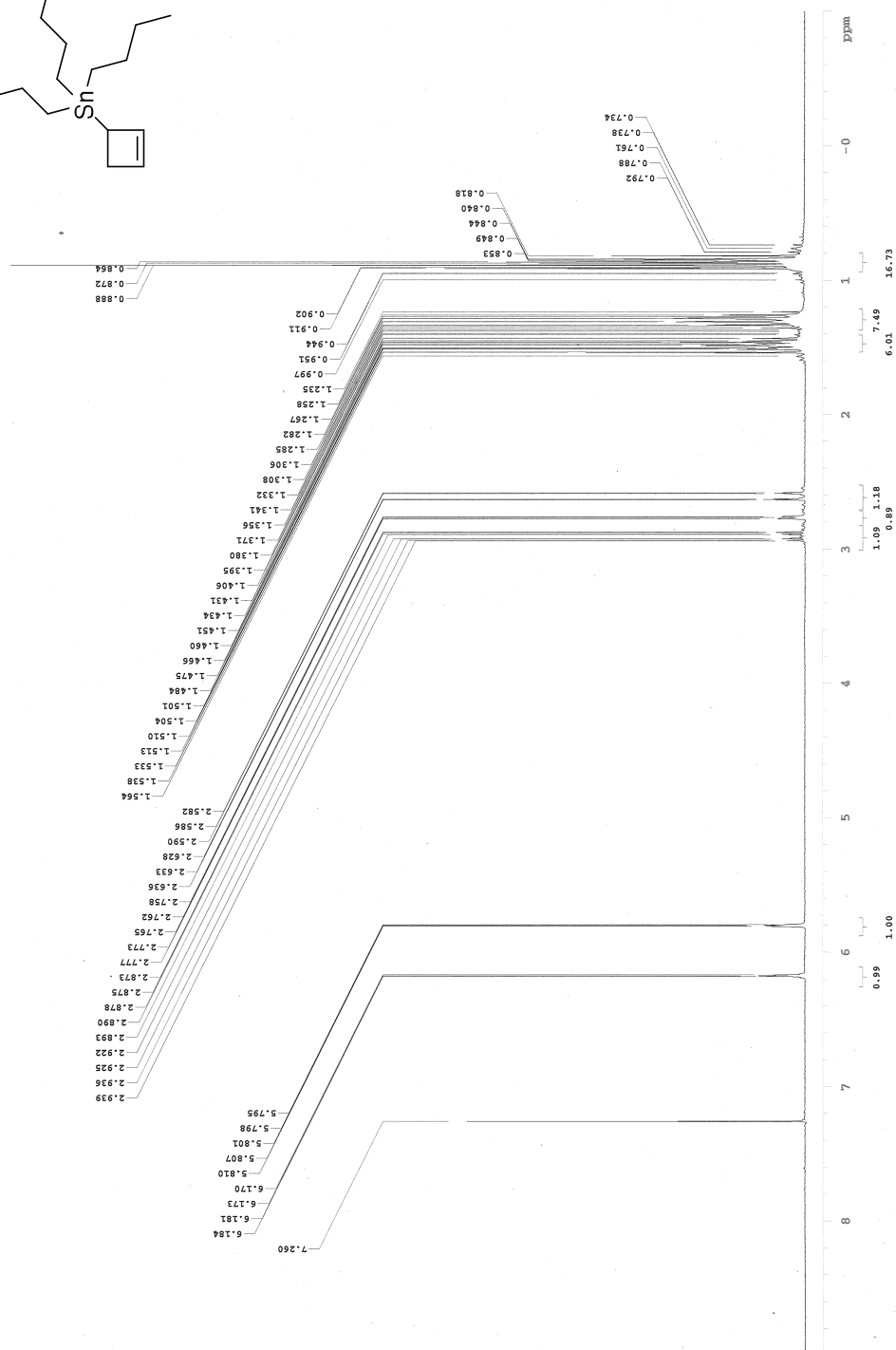
Pulse Sequence: #2pul

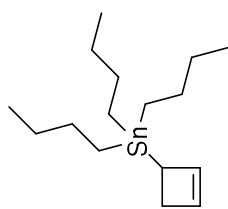




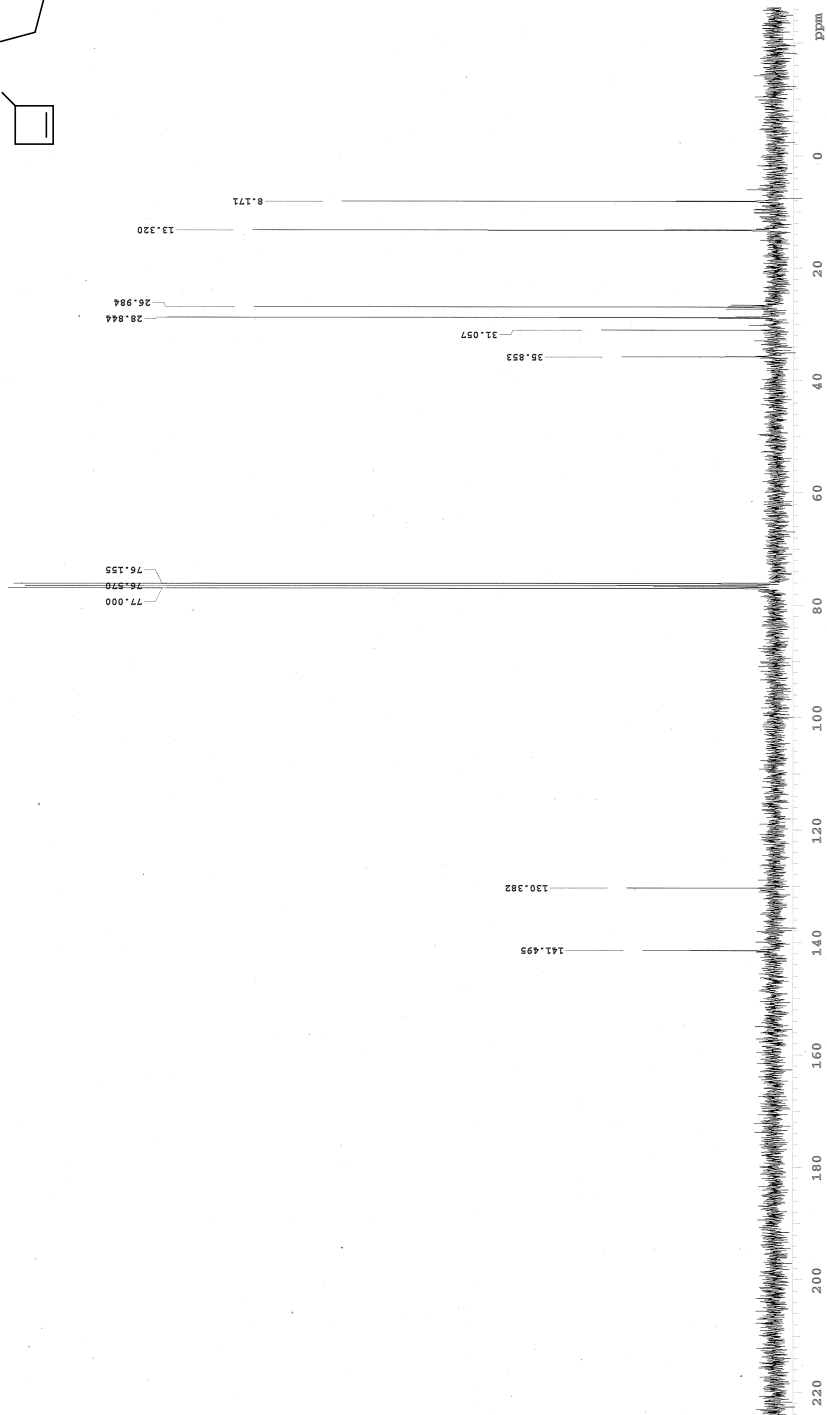
STANDARD IN OBSERVE

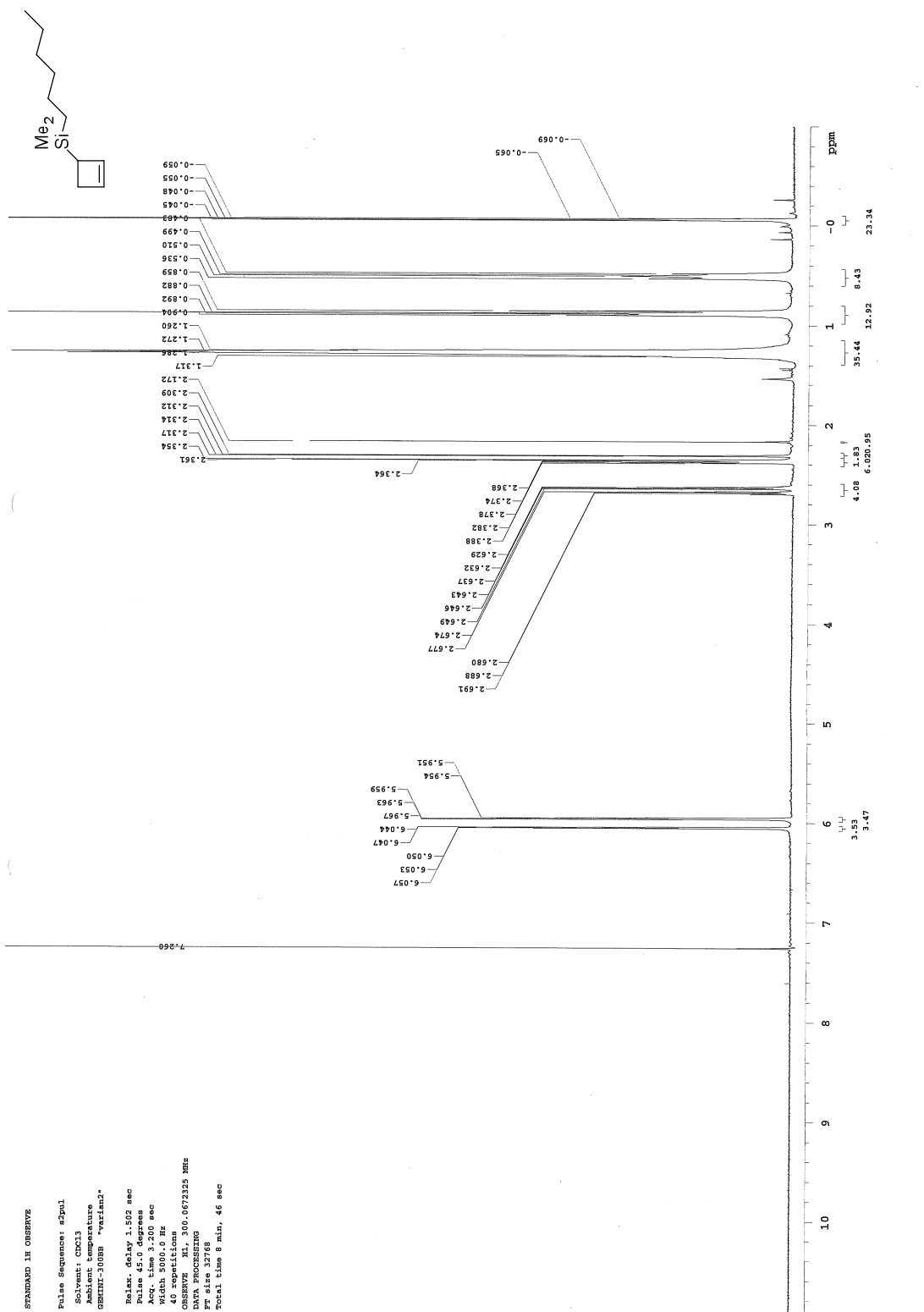
Pulse sequence: zgpg30

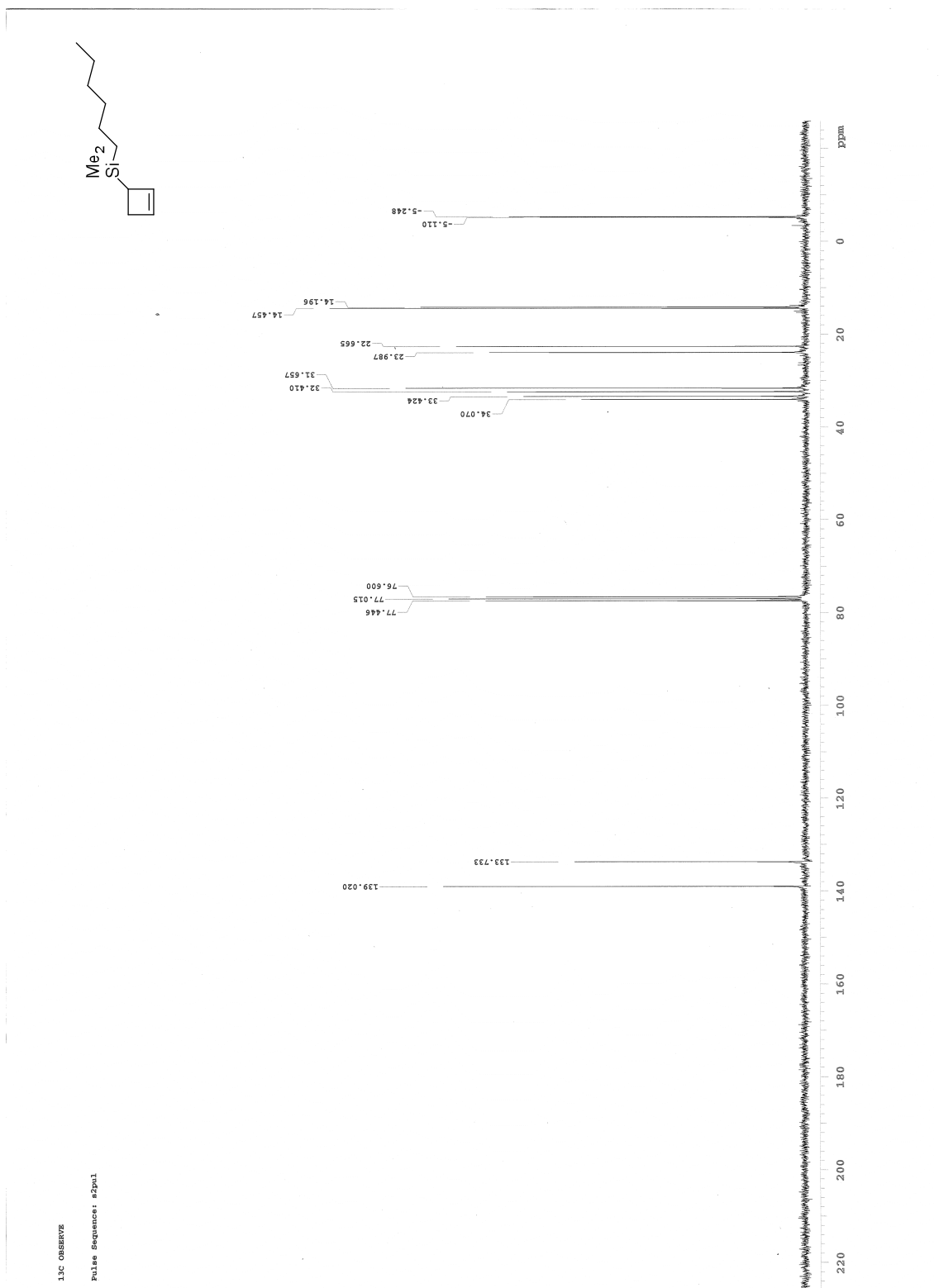




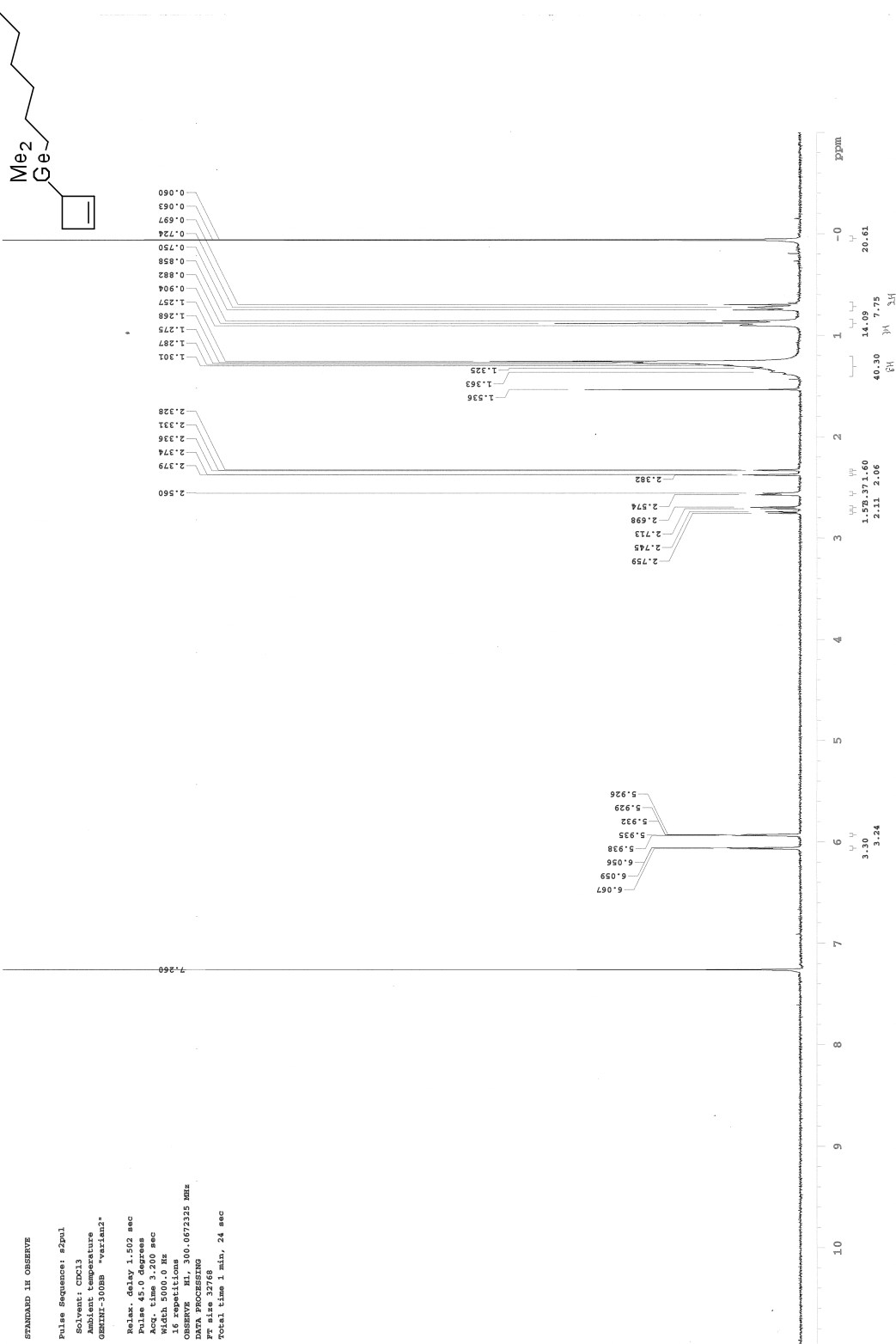
13C OBSERVE  
Pulse Sequence: zgpg30

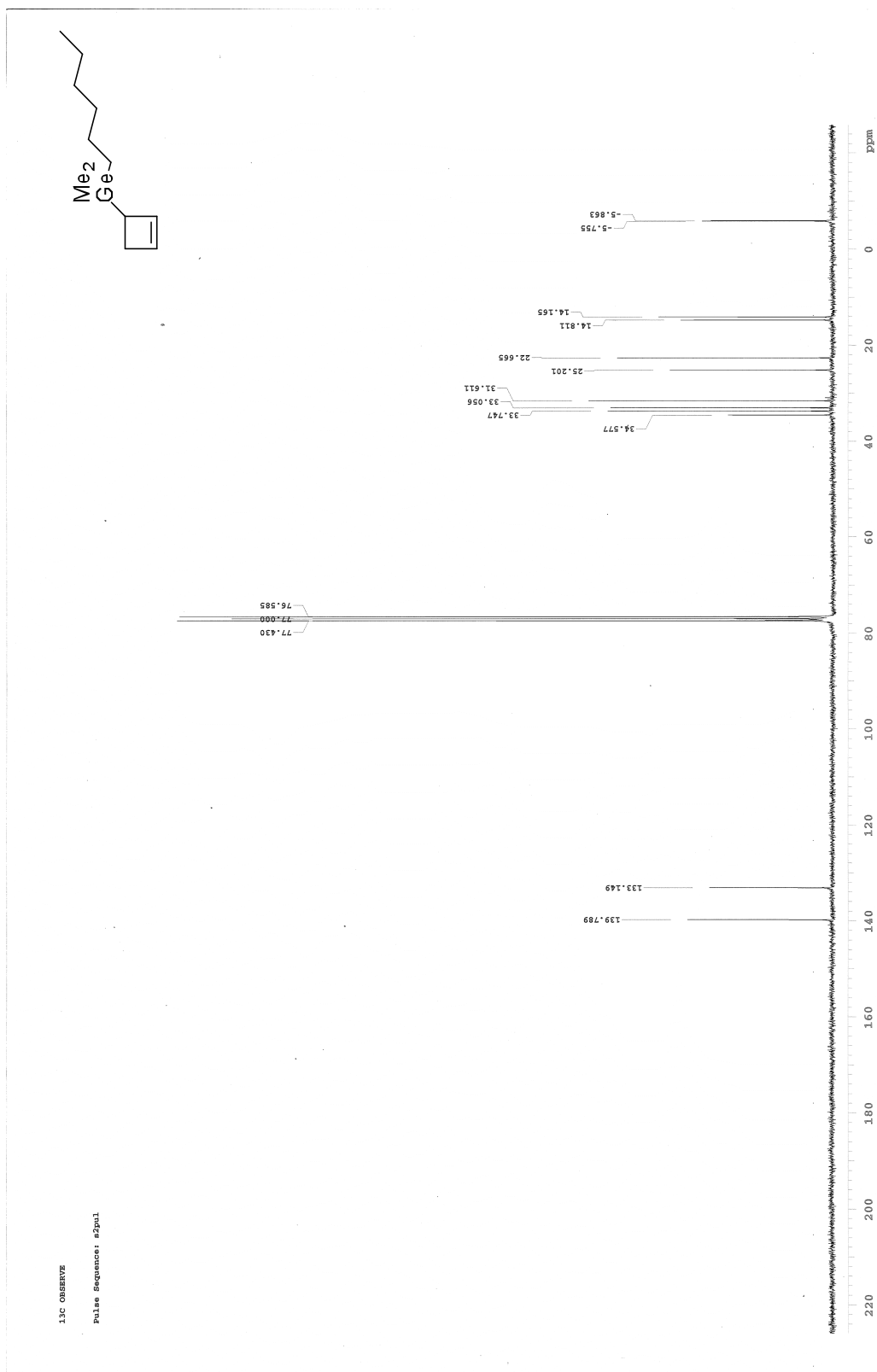


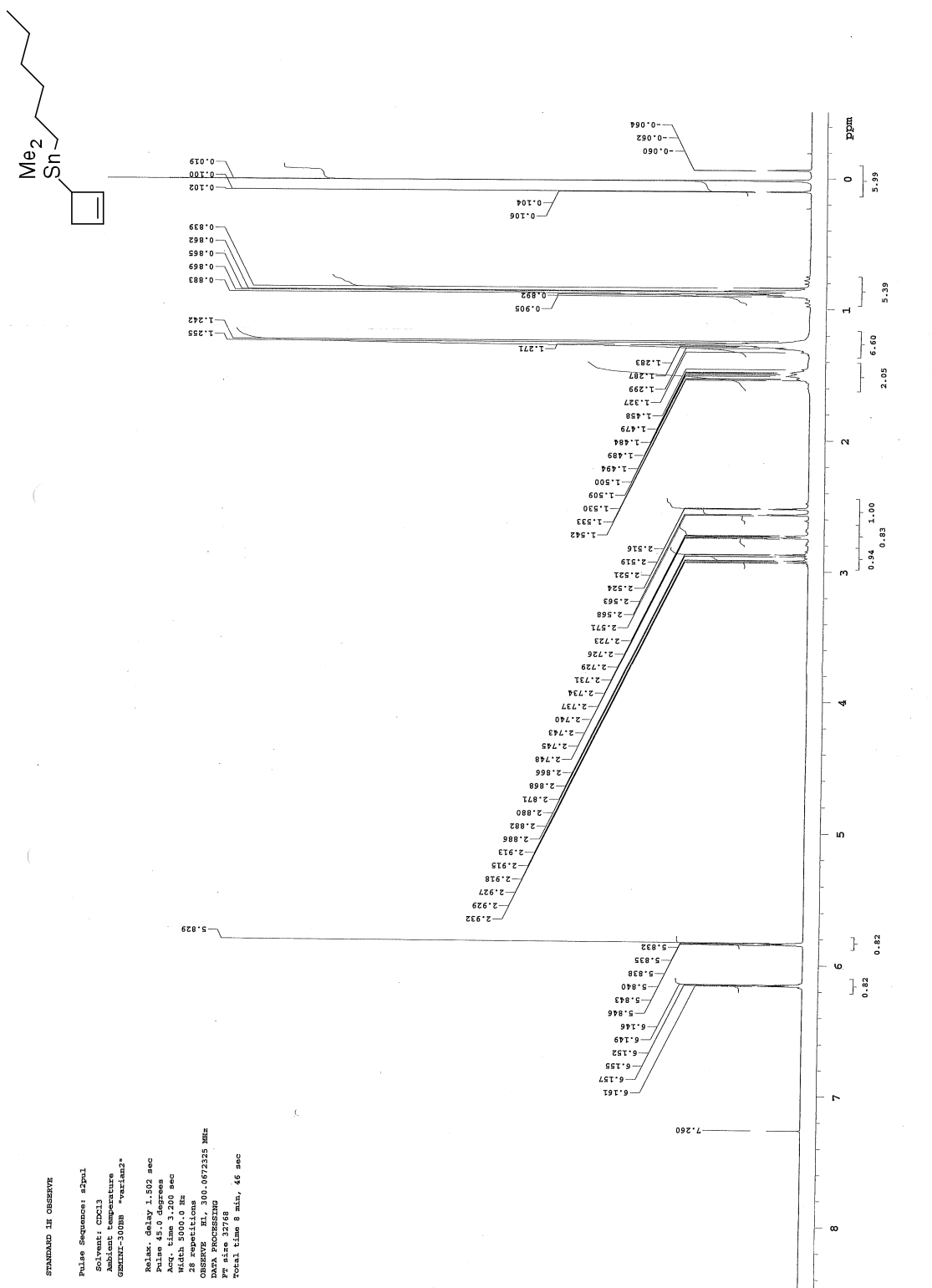


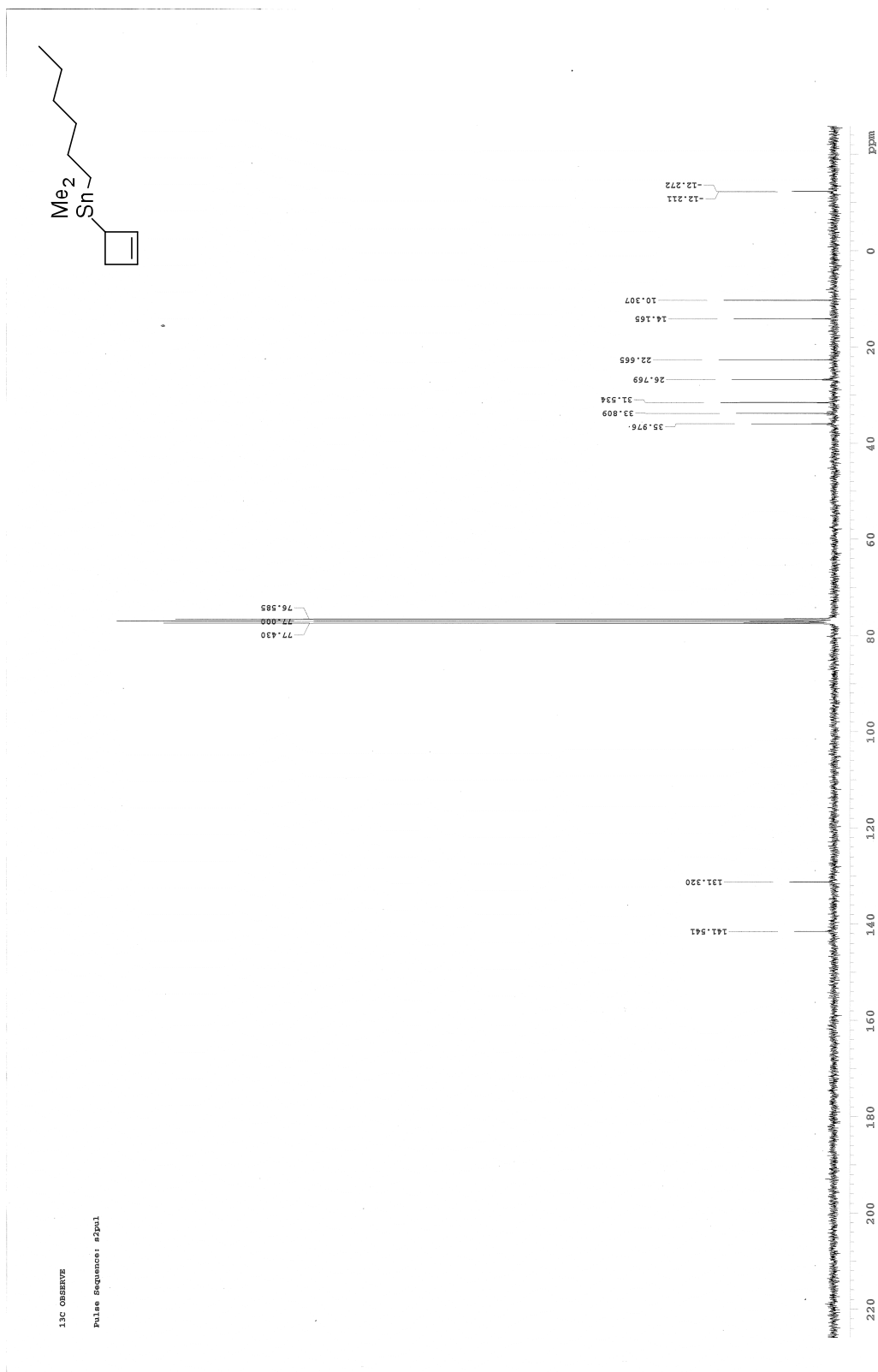




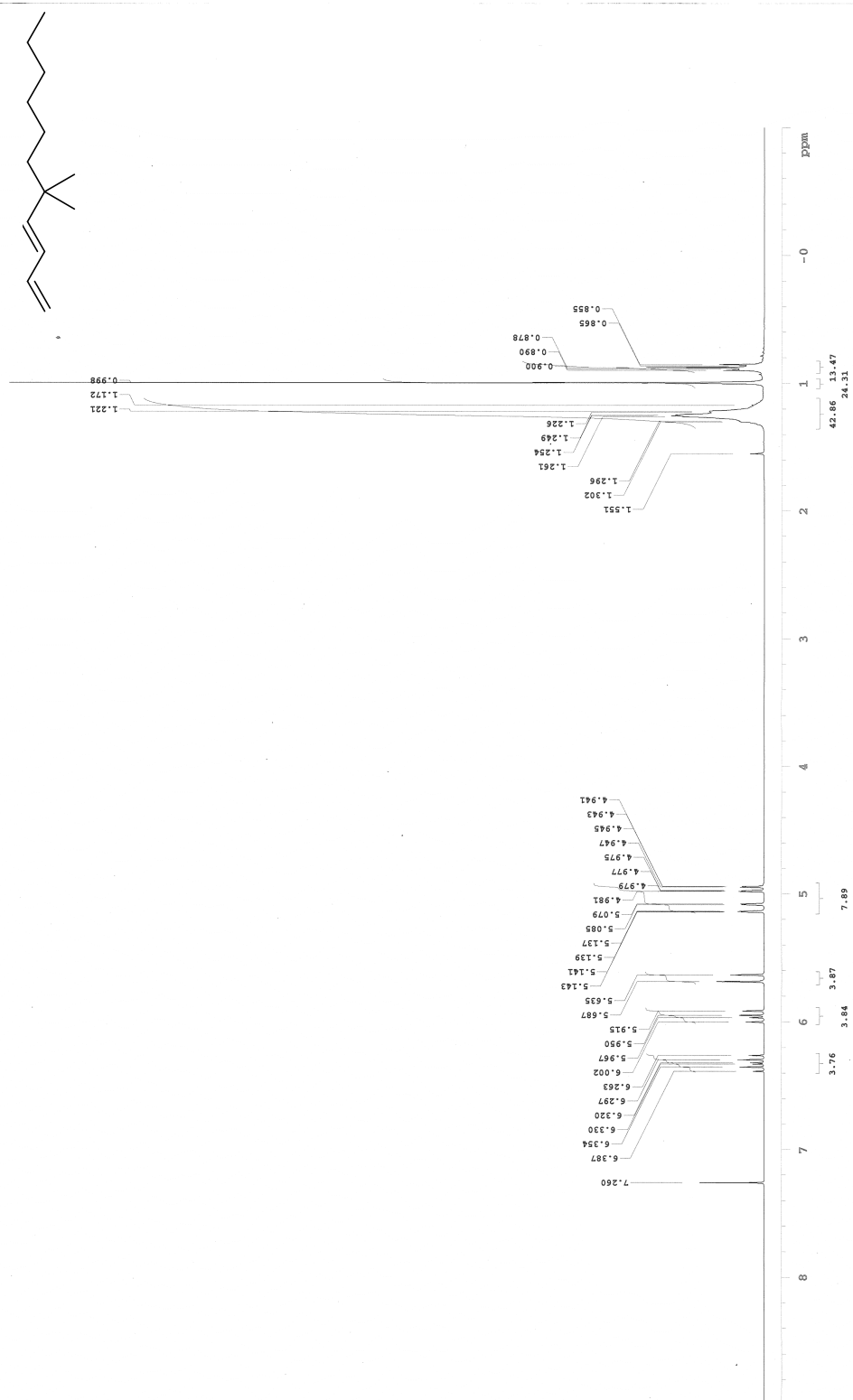






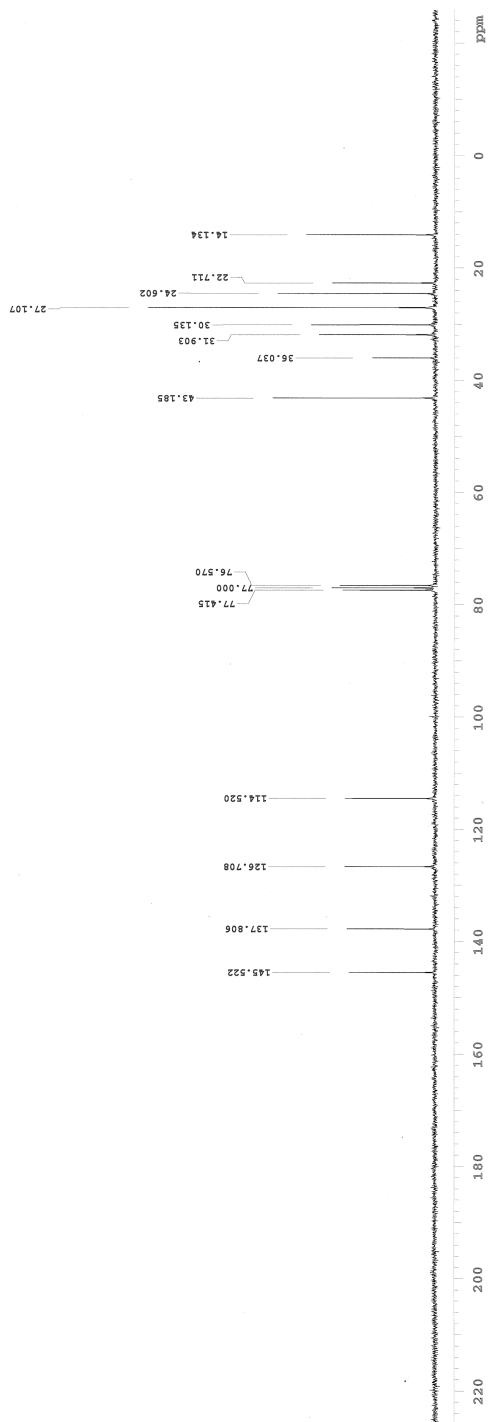


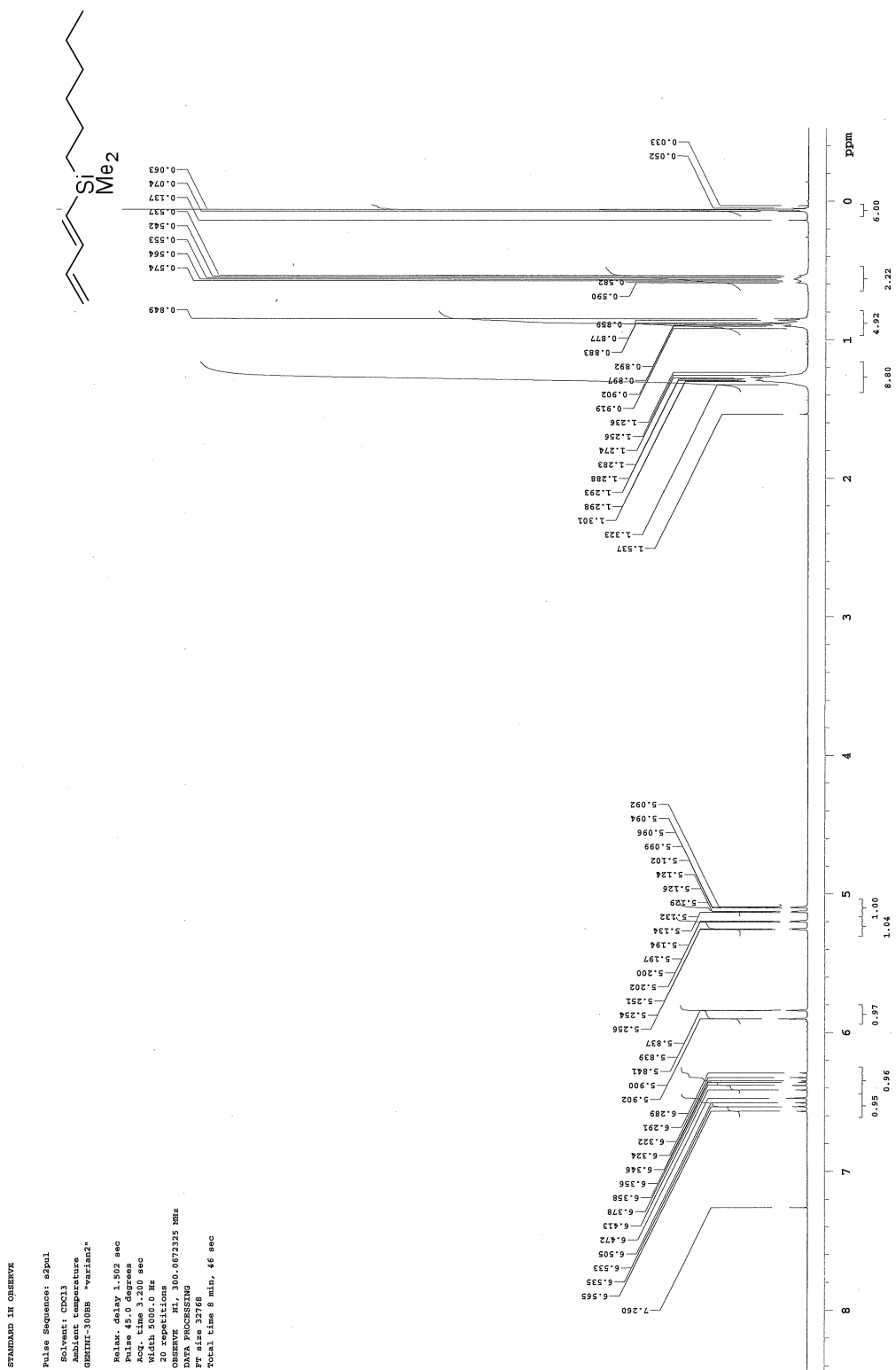
diene-CheZtrex  
Pulse sequence: zgpg1

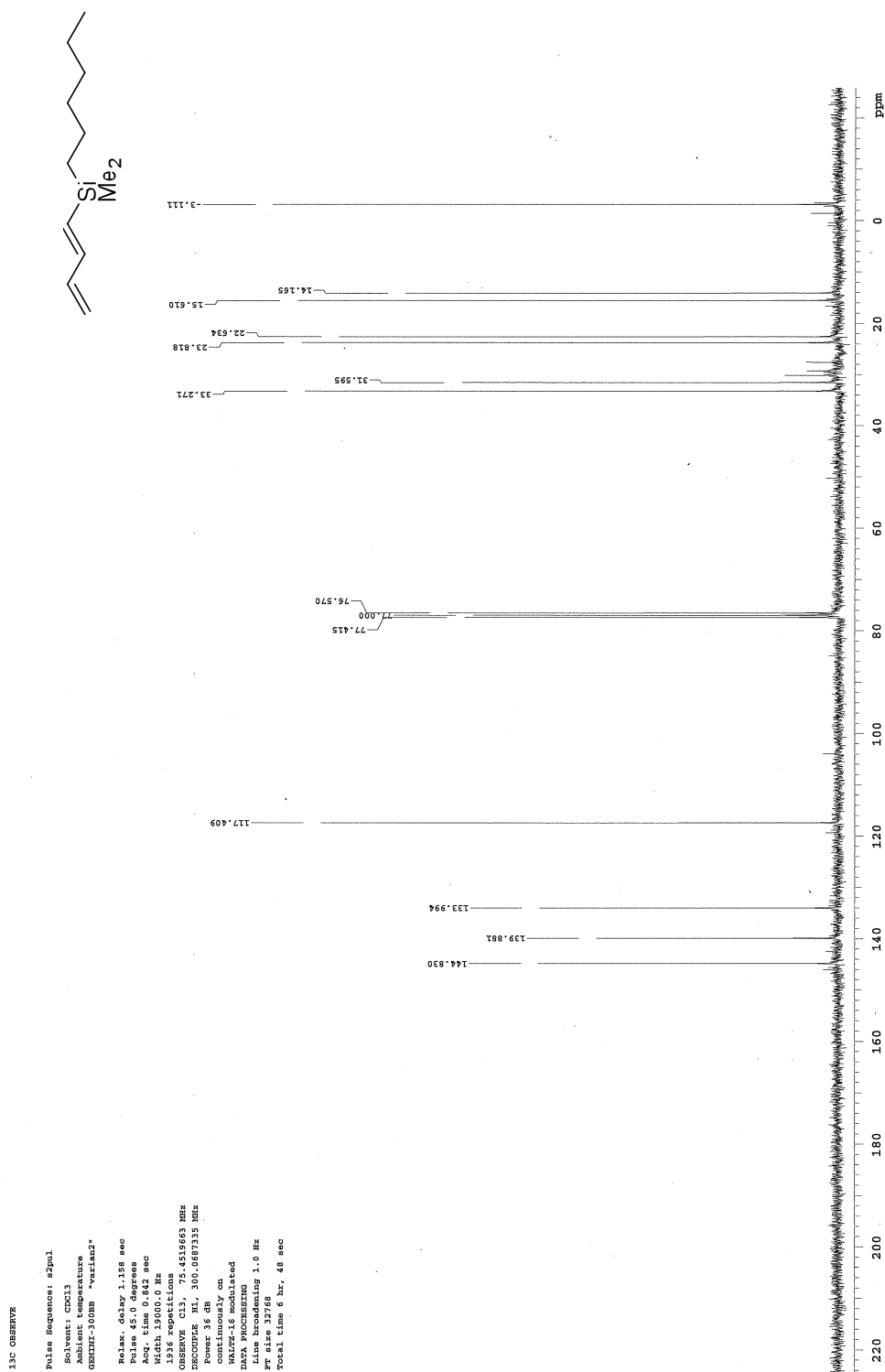


13C OBSERVE

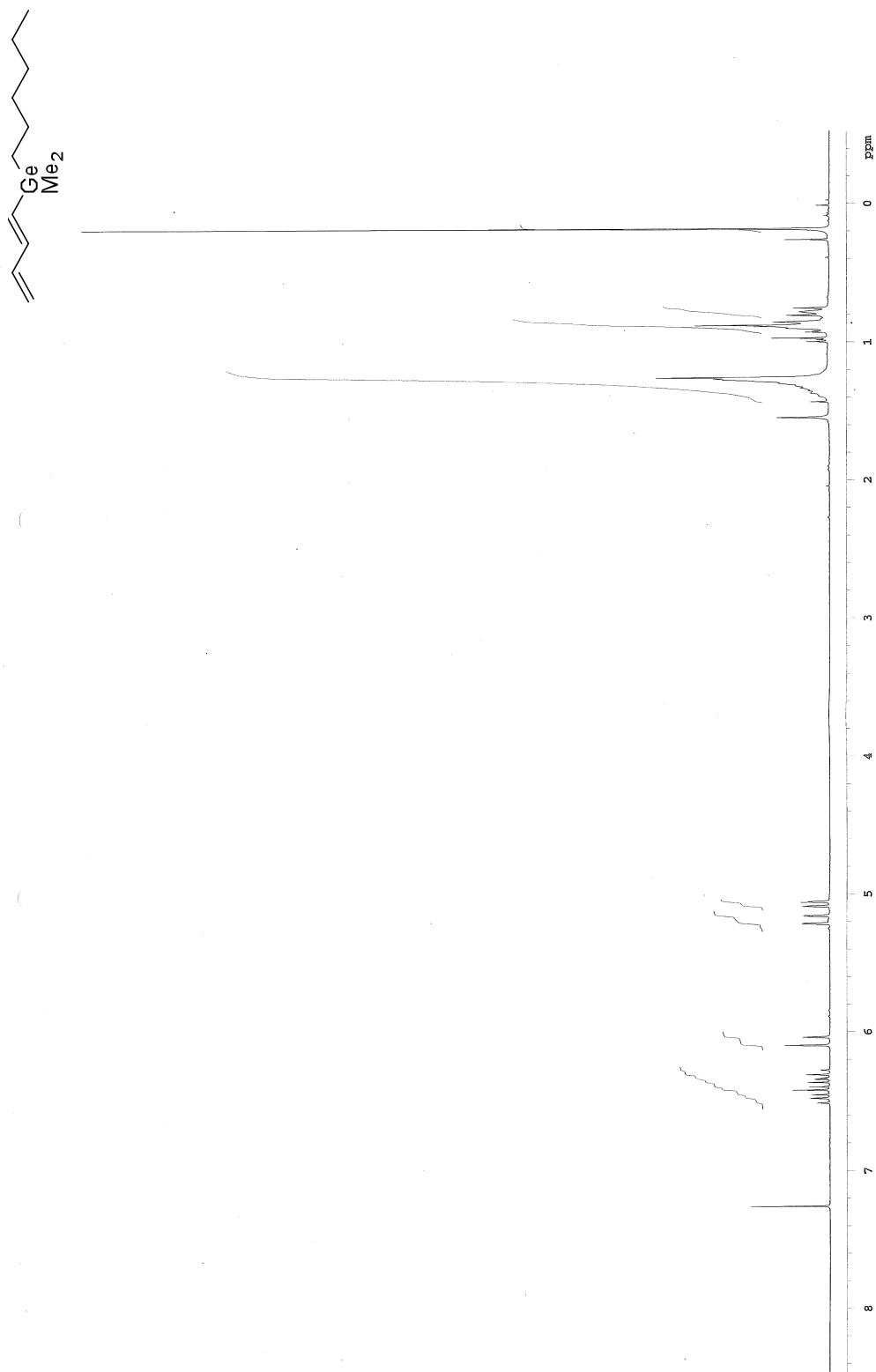
Pulse sequence: zgpg1

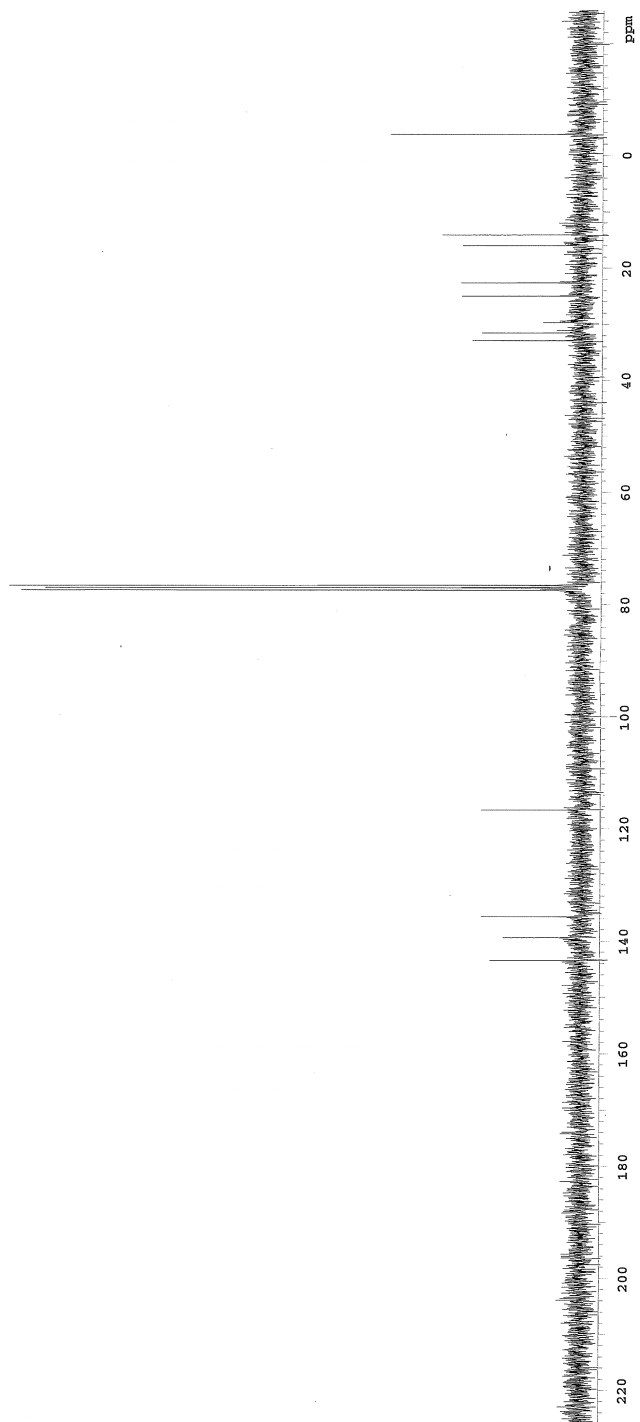
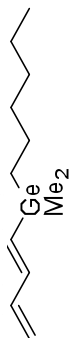


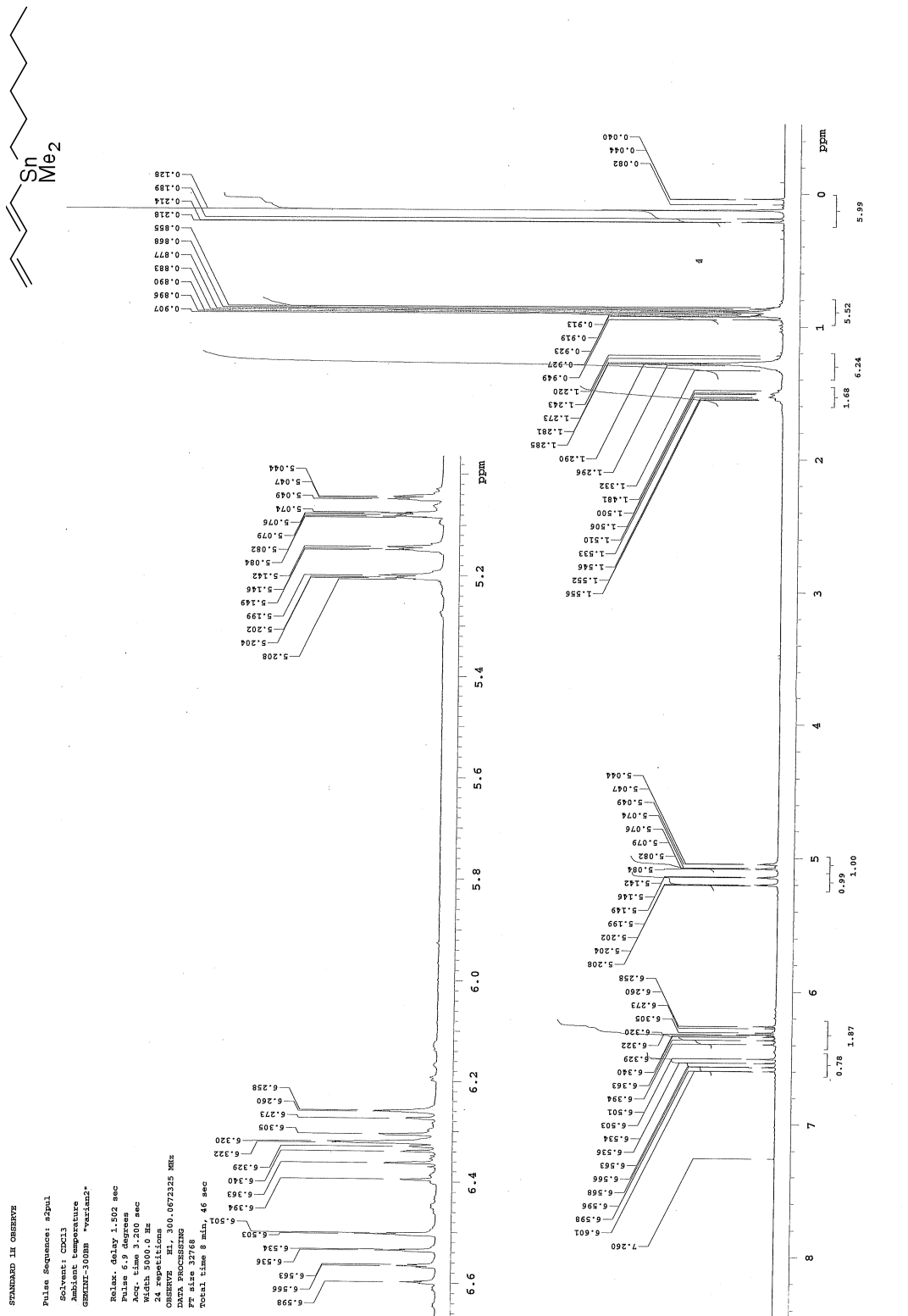


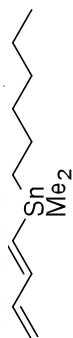












13C OBSERVE

Pulse Sequence: sDpul

Solvent: CDCl3

Ambient temperature

GBMT-300B "variaz"

Relax. delay 1.128 sec

Pulse 45.0 degrees

Acq. time 1.24 sec

Width 19000.0 Hz

2080 repetitions

OBSERVE C13, 75.4519663 MHz

RECORD IN, 300.0687235 MHz

conv. 81.0

conv. 81.0

WALTZ-16 modulated

DATA PROCESSING

Line broadening 1.0 Hz

FT size 32768

Total time 60 hr, 8 min, 7 sec

