

Electronic Supplementary Information

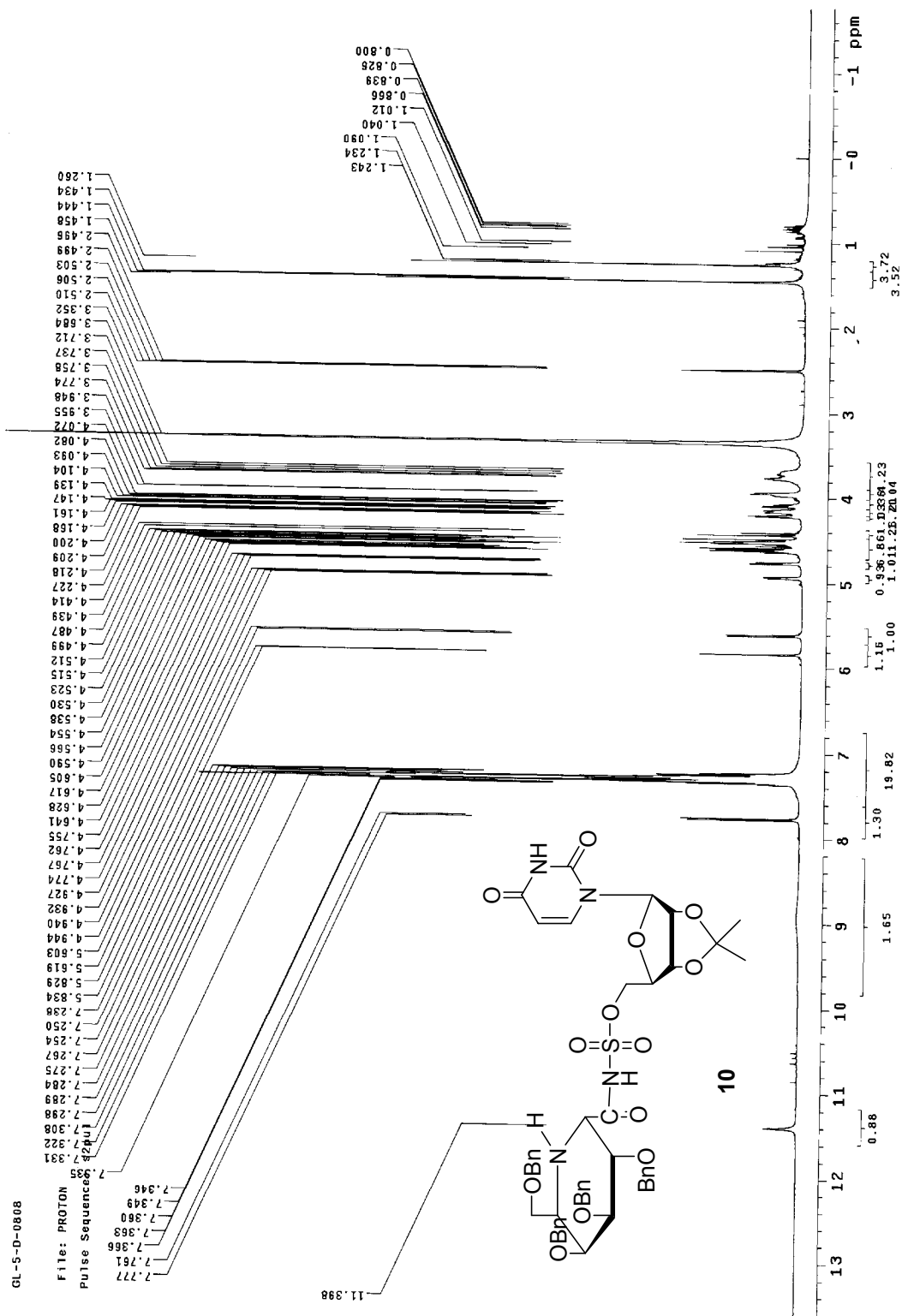
Concise syntheses of selective inhibitors against α -1,3-galactosyltransferase

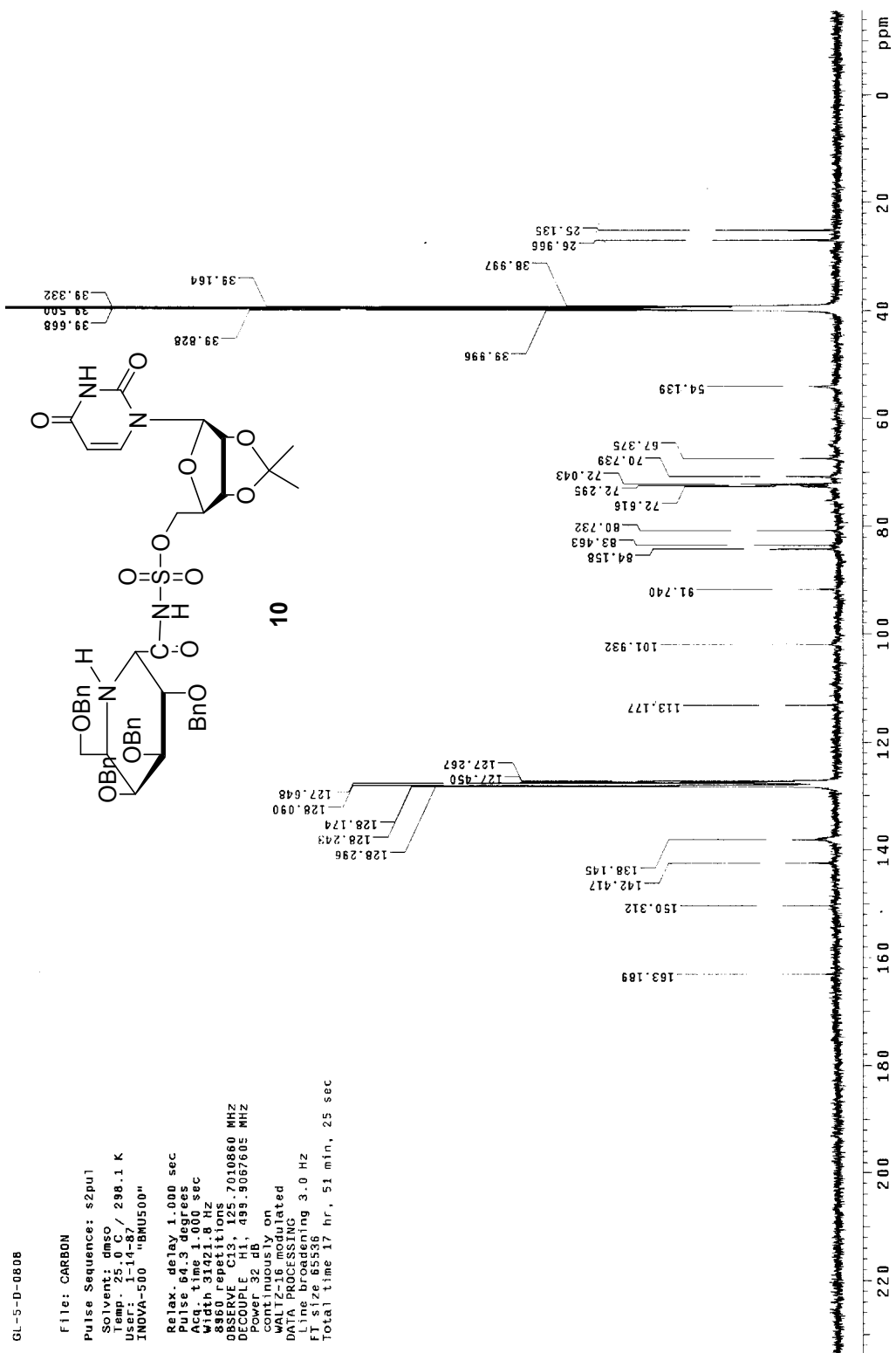
*Guo-Liang Zhang, Li-He Zhang and Xin-Shan Ye**

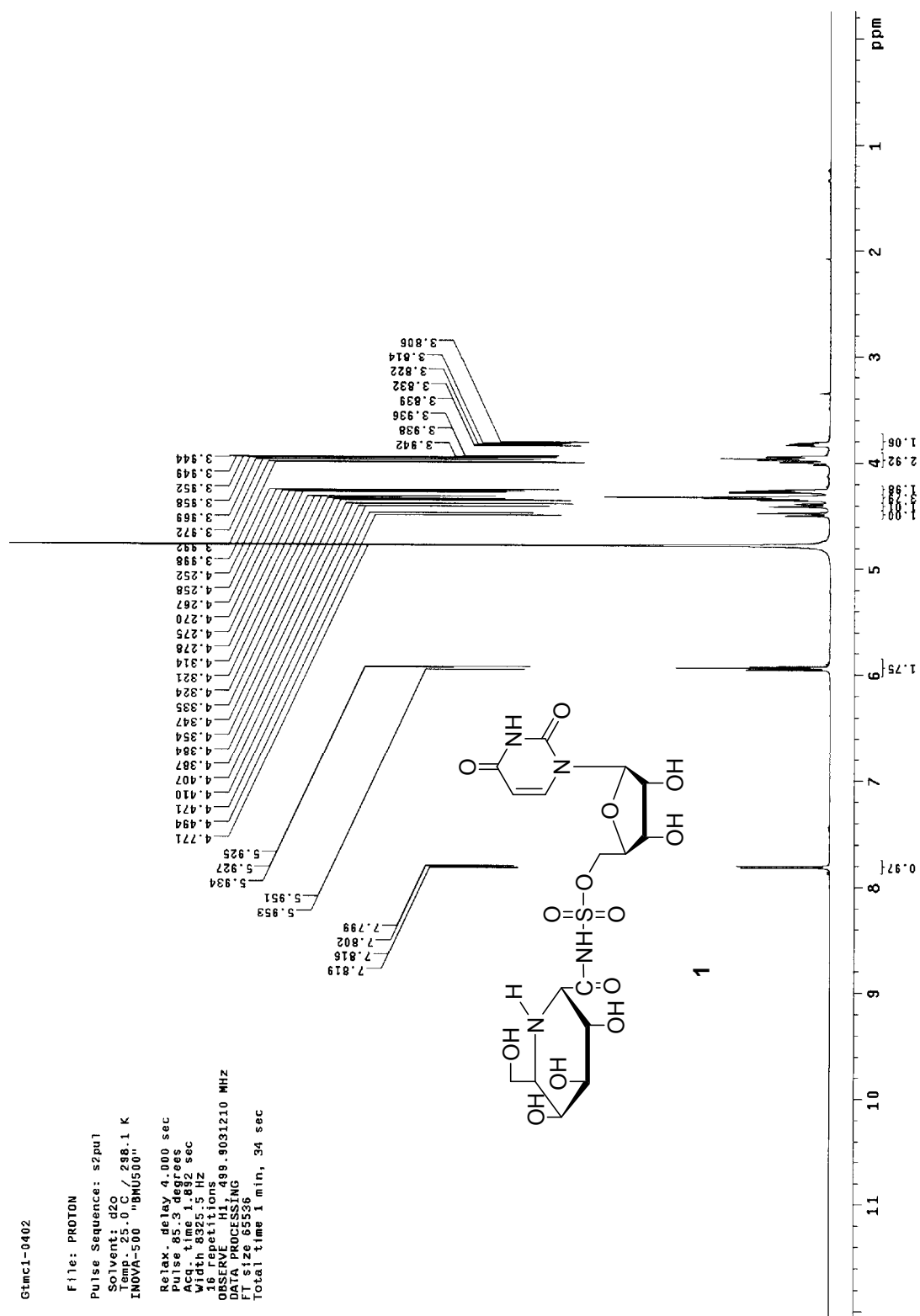
State Key Laboratory of Natural and Biomimetic Drugs, Peking University, and
School of Pharmaceutical Sciences, Peking University, Xue Yuan Road #38, Beijing
100191, China

*Corresponding author. Tel: +86 10 82801570; Fax: +86 10 62014949; E-mail:
xinshan@bjmu.edu.cn

Title Page.....	S1
¹ H NMR spectrum of compound 10	S2
¹³ C NMR spectrum of compound 10	S3
¹ H NMR spectrum of compound 1	S4
¹³ C NMR spectrum of compound 1	S5
¹ H NMR spectrum of compound 12	S6
¹³ C NMR spectrum of compound 12	S7
¹ H NMR spectrum of compound 2	S8
¹³ C NMR spectrum of compound 2	S9
COSY spectrum of compound 2	S10
HSQC spectrum of compound 2	S11
¹ H NMR spectrum of compound 13	S12
¹ H NMR spectrum of compound 14	S13
¹³ C NMR spectrum of compound 14	S14
¹ H NMR spectrum of compound 15	S15
¹³ C NMR spectrum of compound 15	S16
¹ H NMR spectrum of compound 3	S17
¹³ C NMR spectrum of compound 3	S18
¹ H NMR spectrum of compound 19	S19
¹³ C NMR spectrum of compound 19	S20
¹ H NMR spectrum of compound 4	S21
¹³ C NMR spectrum of compound 4	S22
¹ H NMR spectrum of compound 20	S23
¹³ C NMR spectrum of compound 20	S24
COSY spectrum of compound 20	S25
HSQC spectrum of compound 20	S26
HMBC spectrum of compound 20	S27







GtmCI-0402

File: CARBON

Pulse Sequence: s2pu1

Solvent: d2o

Temp: 25.0 C / 298.1 K

User: 1-14-87

INDVA-500 "BMU500"

Relax. delay 1.000 sec

Pulse 45.0 degrees

Time 1.000 sec

Width 3121.8 MHz

With 3121.8 MHz

640 repetitions

OBSERVE C13, 125.7006560 MHz

DECOUPLE H1, 499.9056708 MHz

Power 38 dB

continuously on

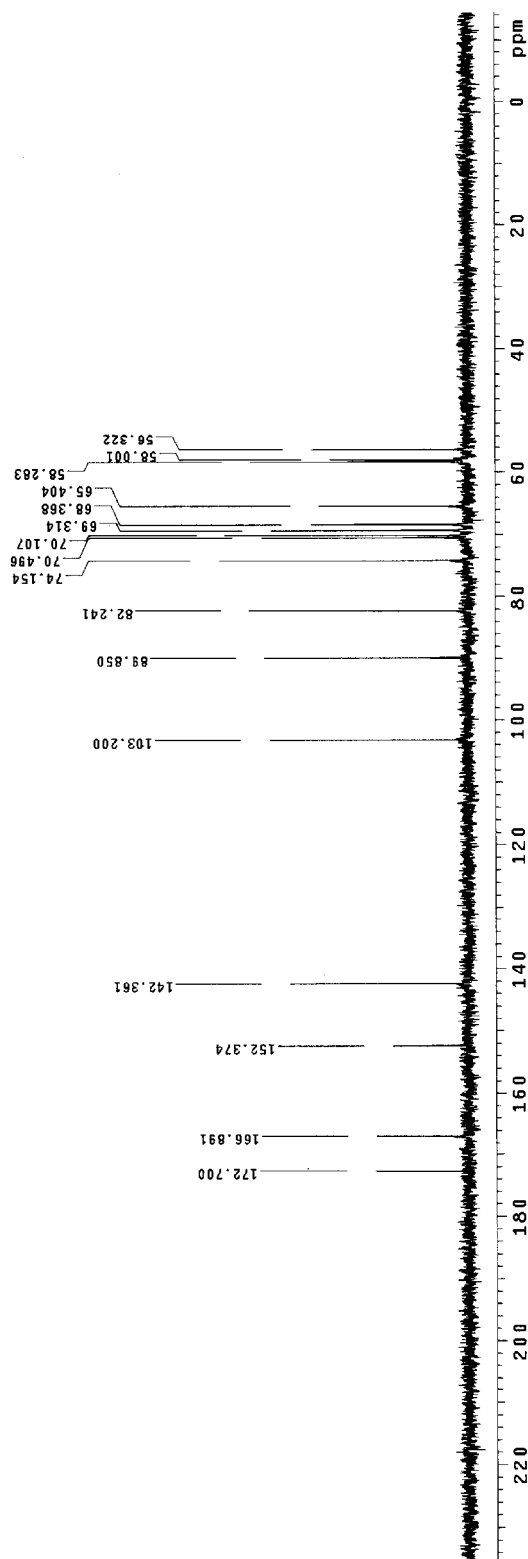
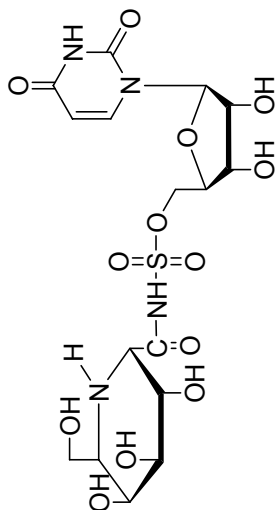
water gated

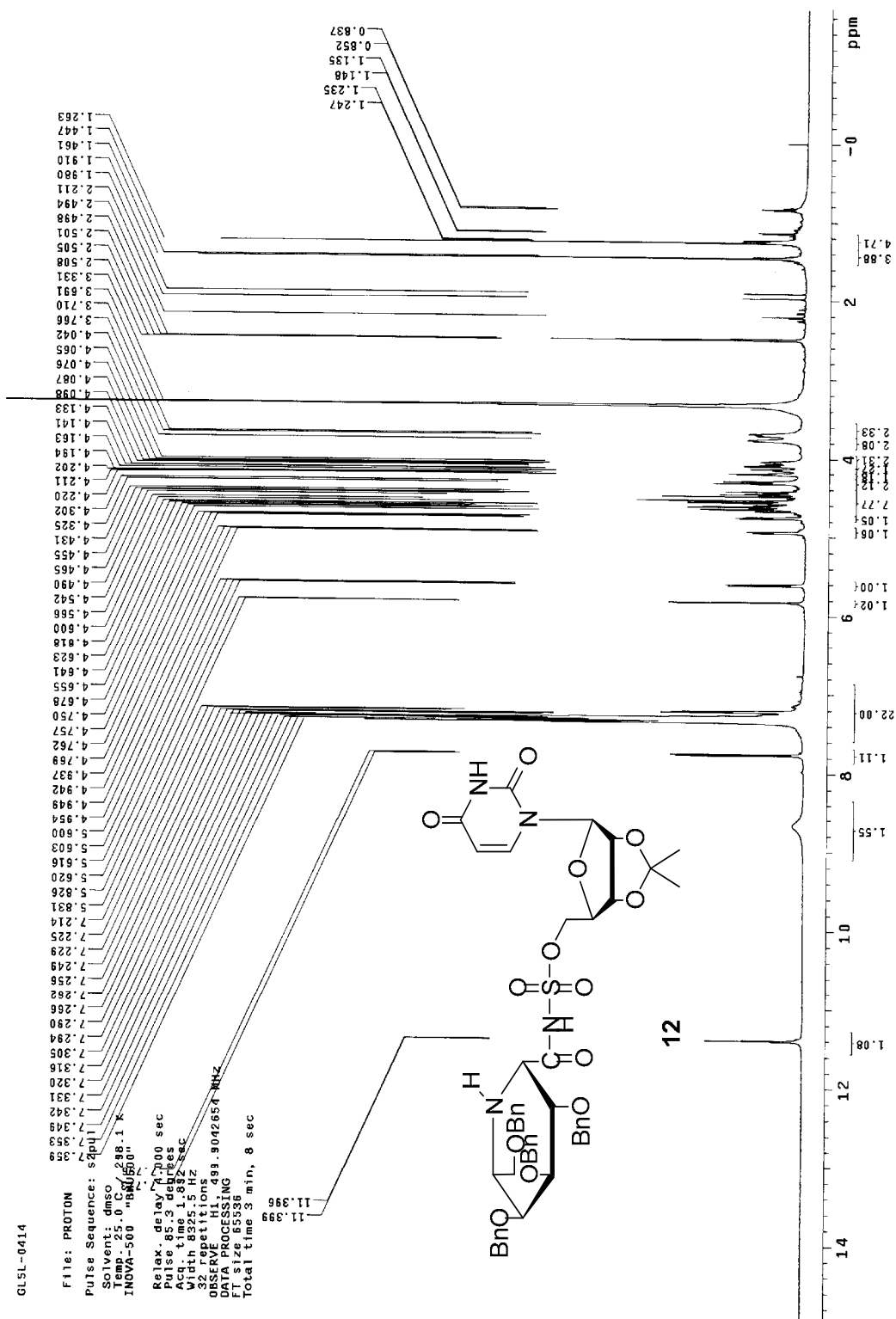
DATA PROCESSING

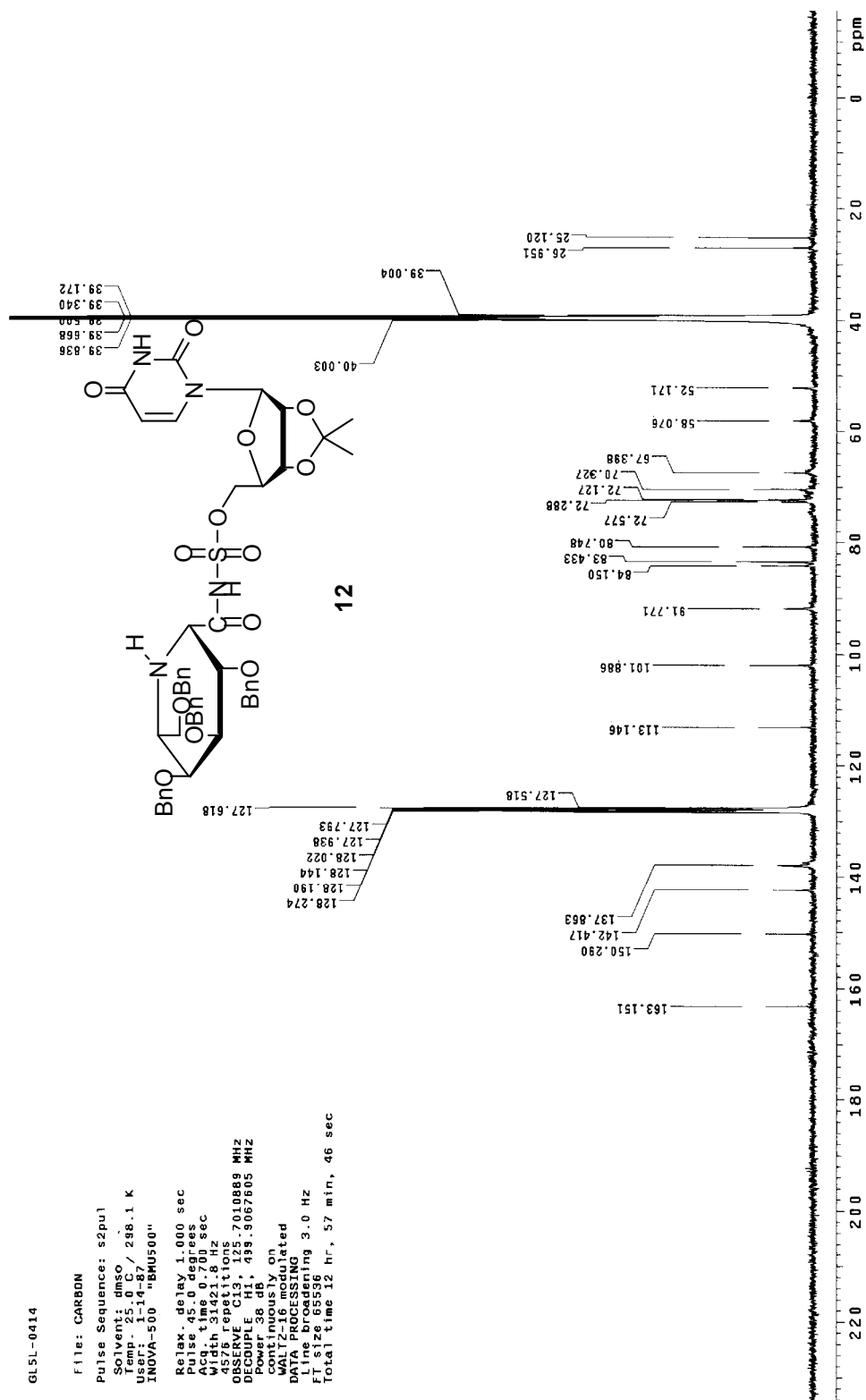
Line broadening 3.0 Hz

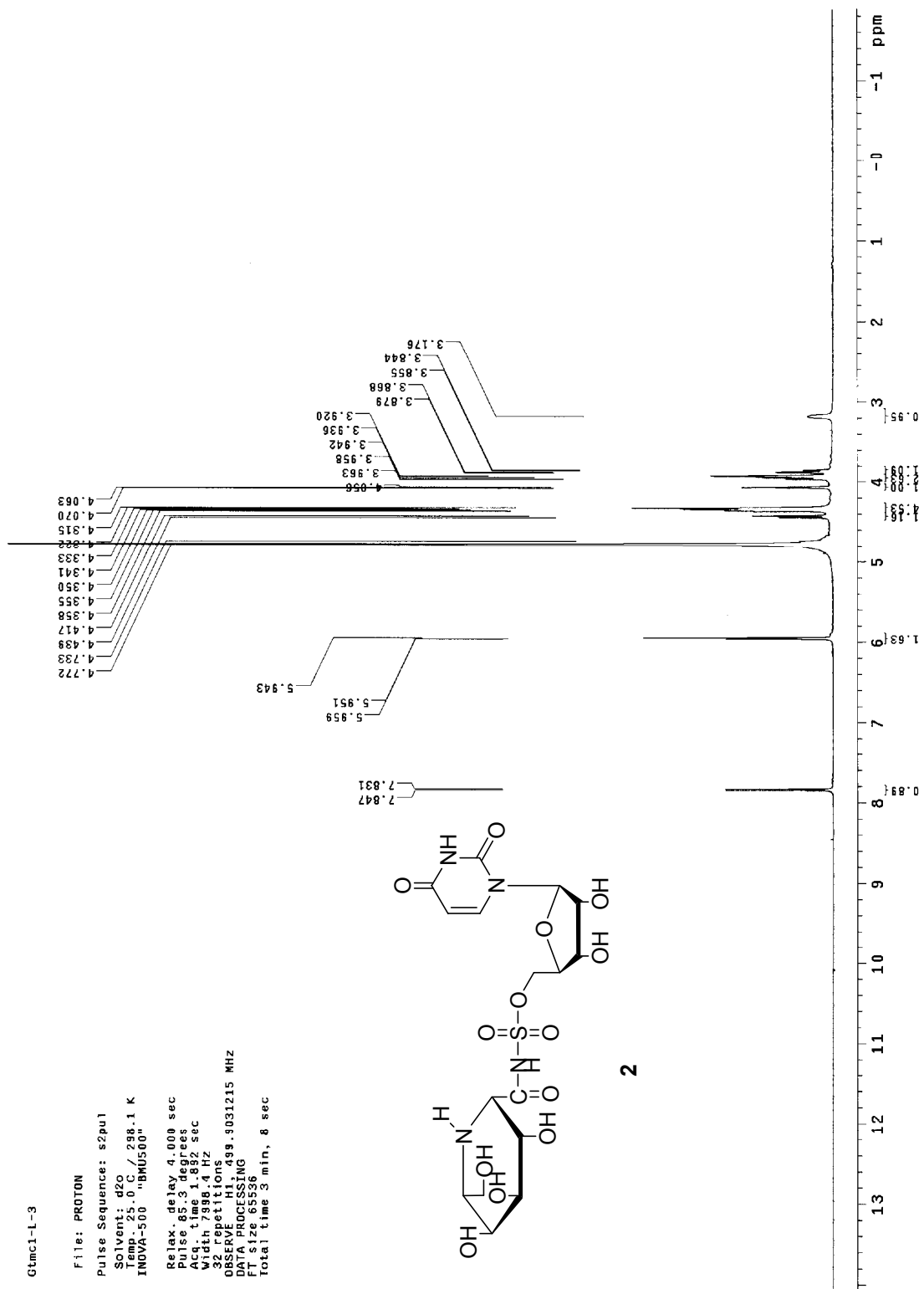
FT size 131072

Total time 22 hr, 59 min, 27 sec









61mci-l-3

File: CARBON

Pulse Sequence: s2pu1

Solvent: d2o

Temp: 25.0 C / 298.1 K

User: 1-14-87

INOVA-500 "BHU500"

Relax. delay 1.000 sec

Pulse 45.0 degrees

Acq. time 1.300 sec

Width 31421.8 Hz

2816 repetitions

NUC1 CH, 425.7005560 MHz

DECODE CH, 439.9056700 MHz

Power 38 dB

continuously on

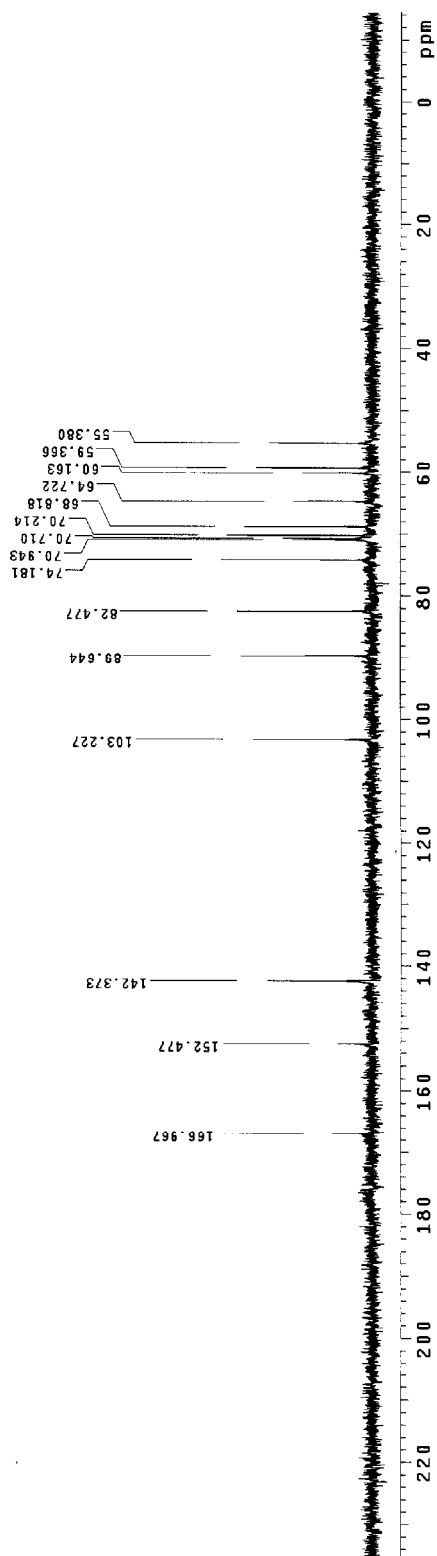
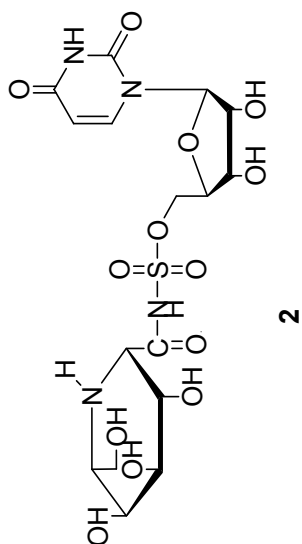
WALTZ-16 modulated

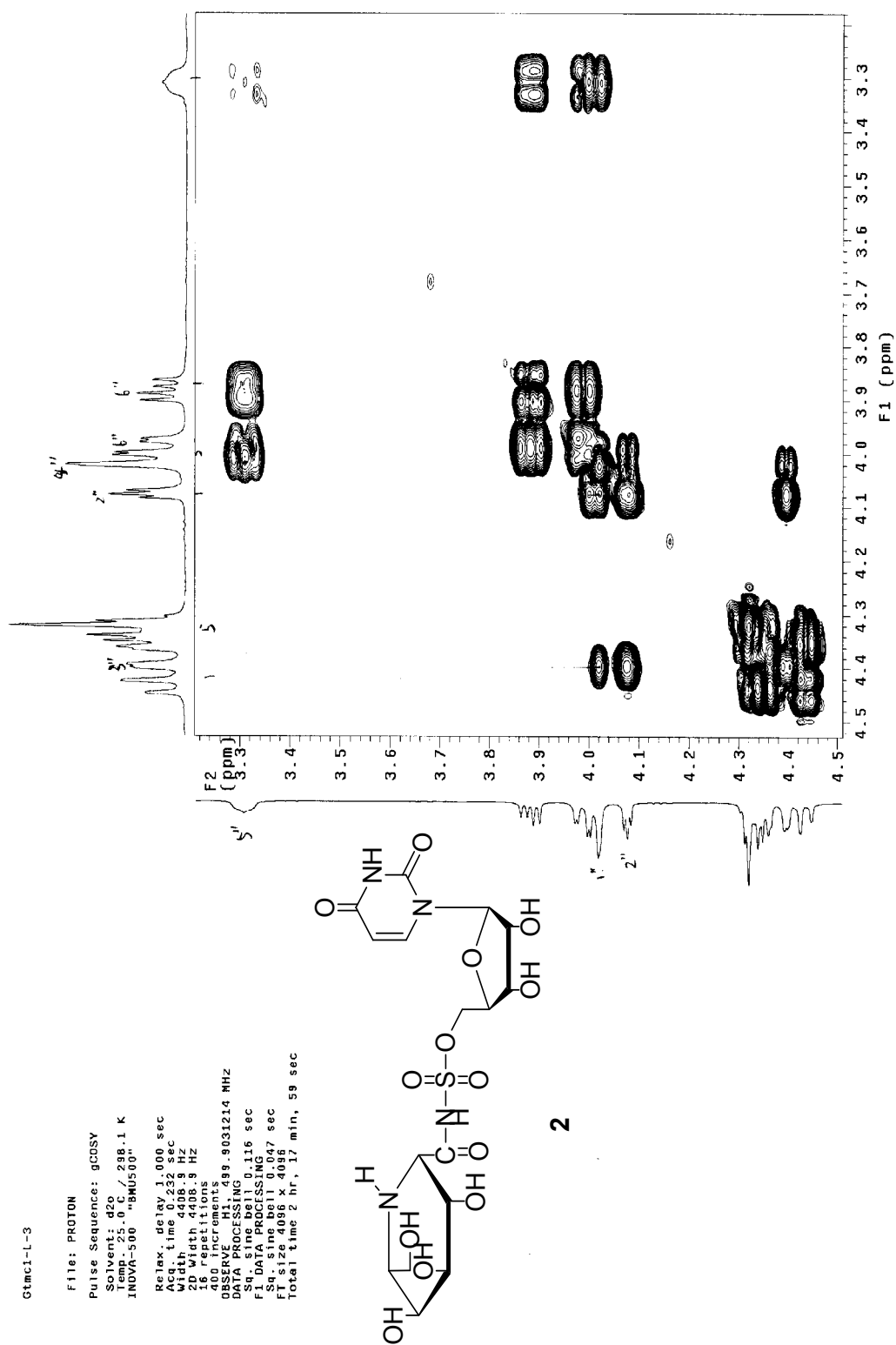
DATA PROCESSING

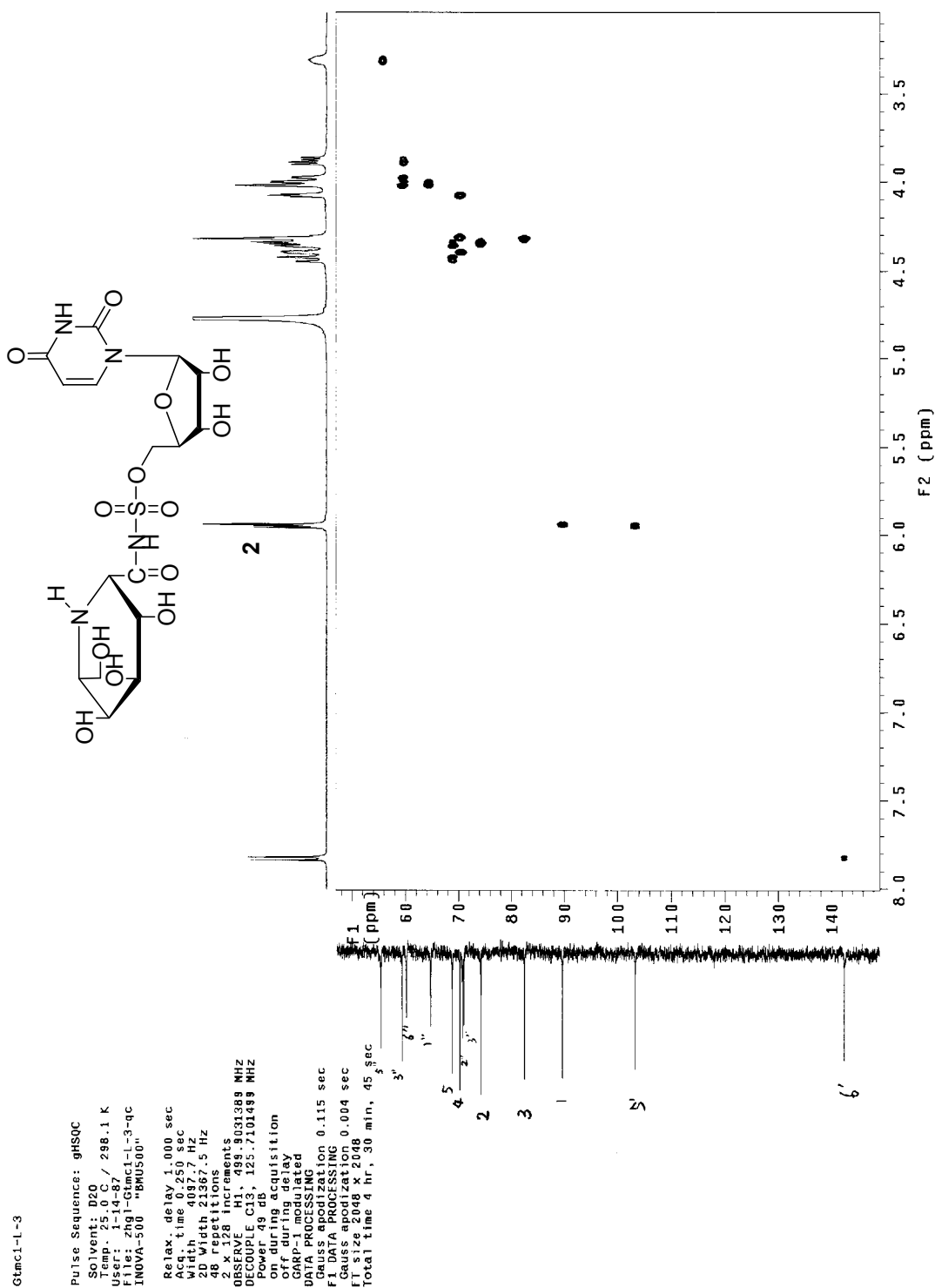
Line broadening 3.0 Hz

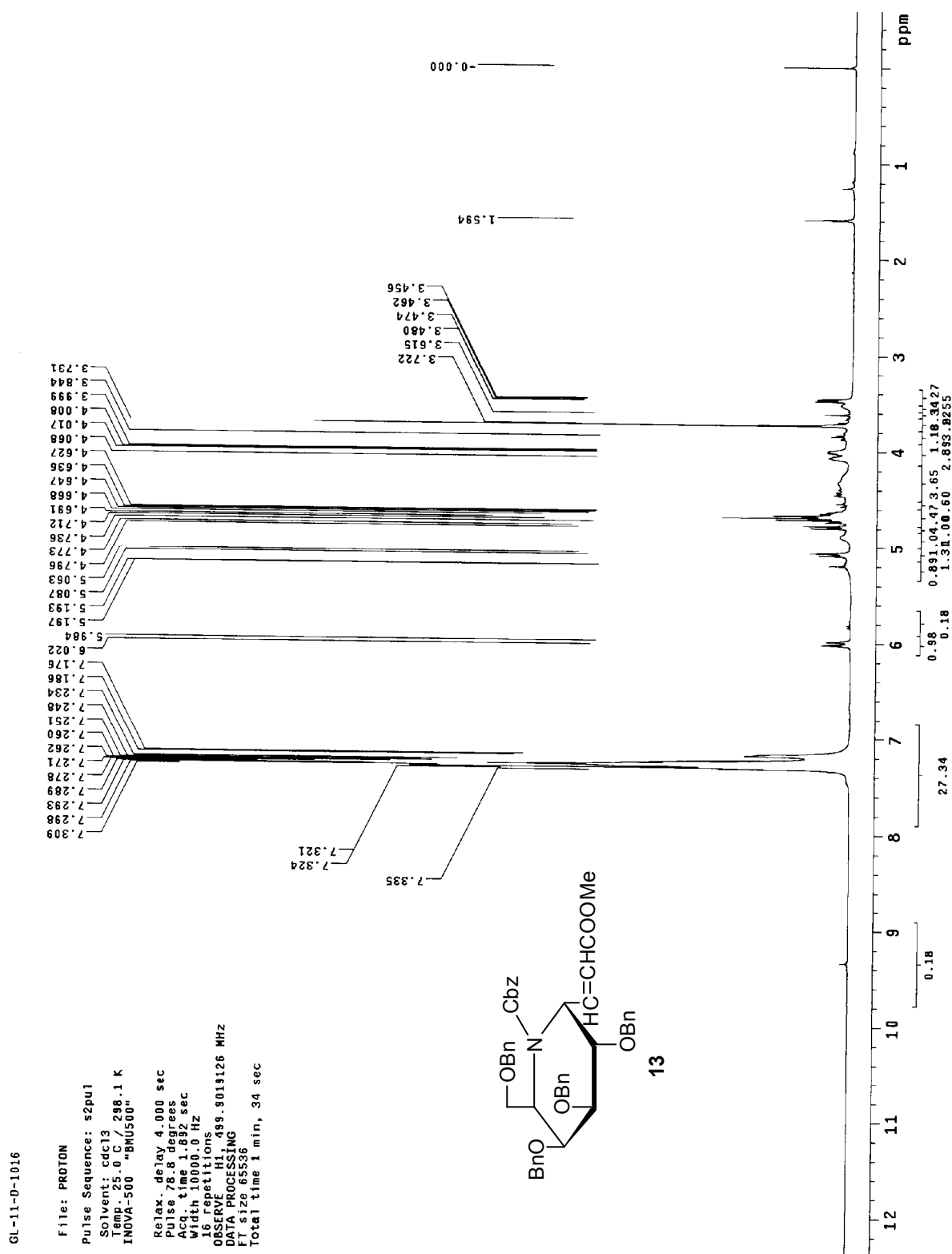
FT size 131072

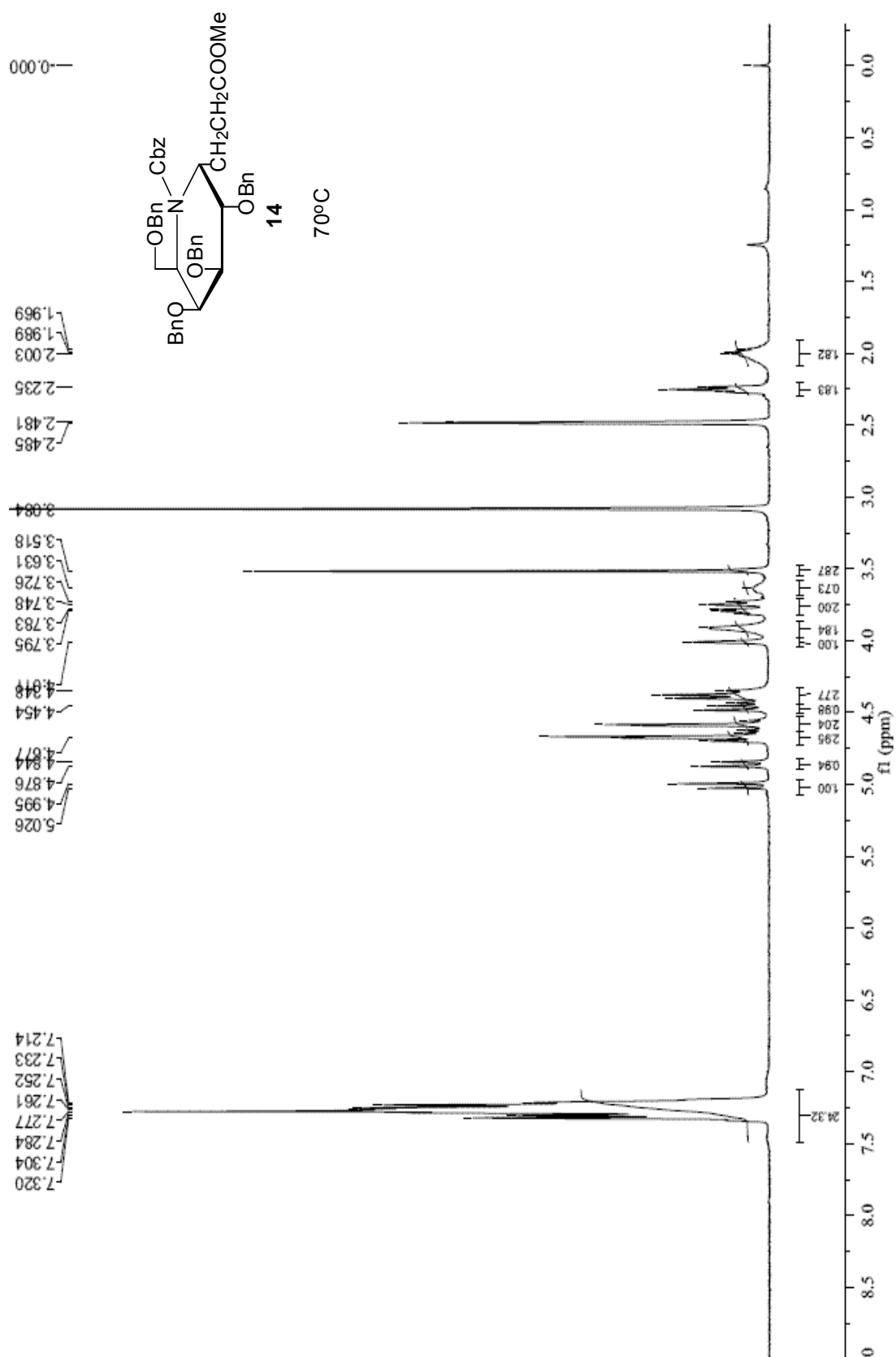
Total time 17 hr, 31 min, 1 sec

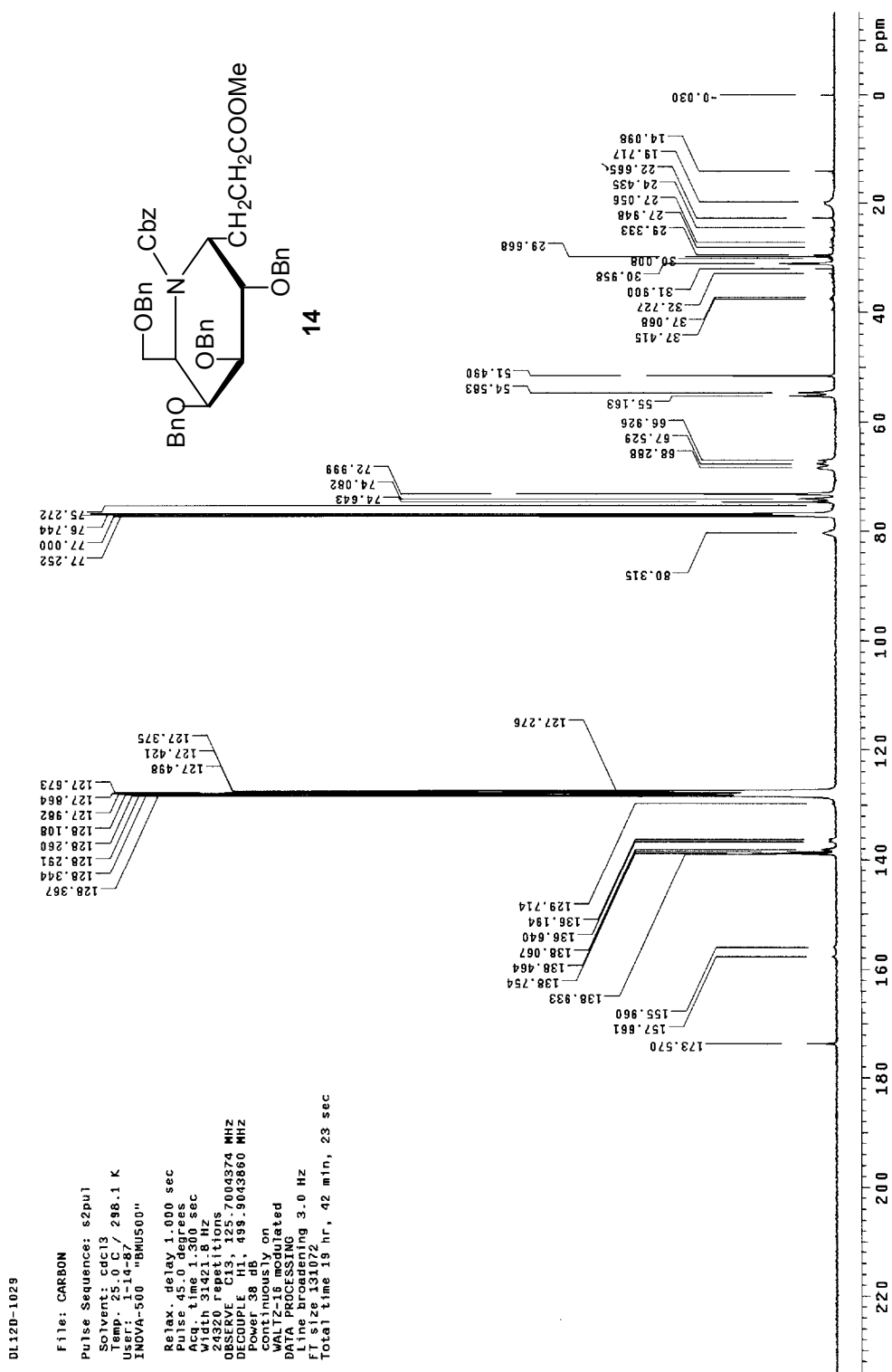


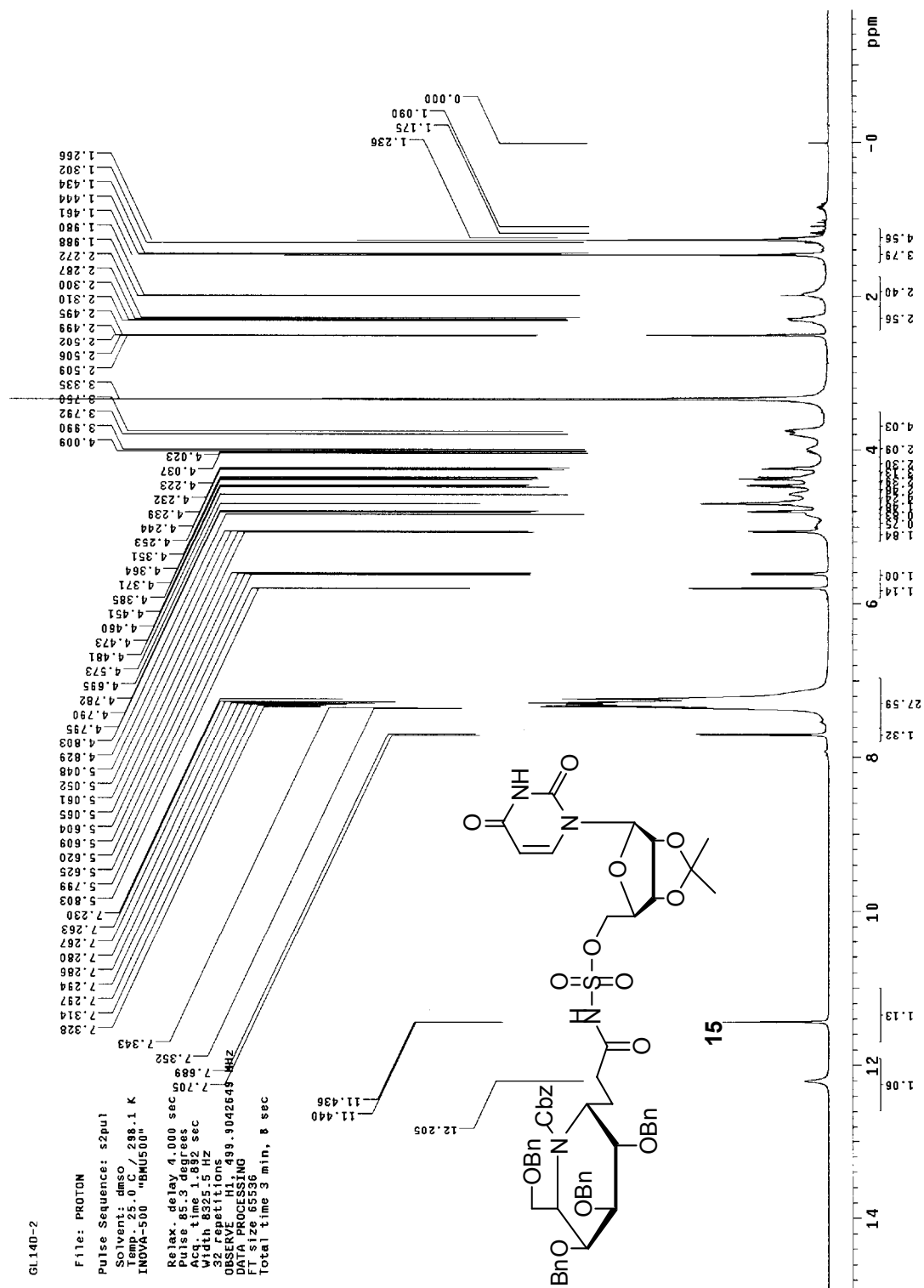


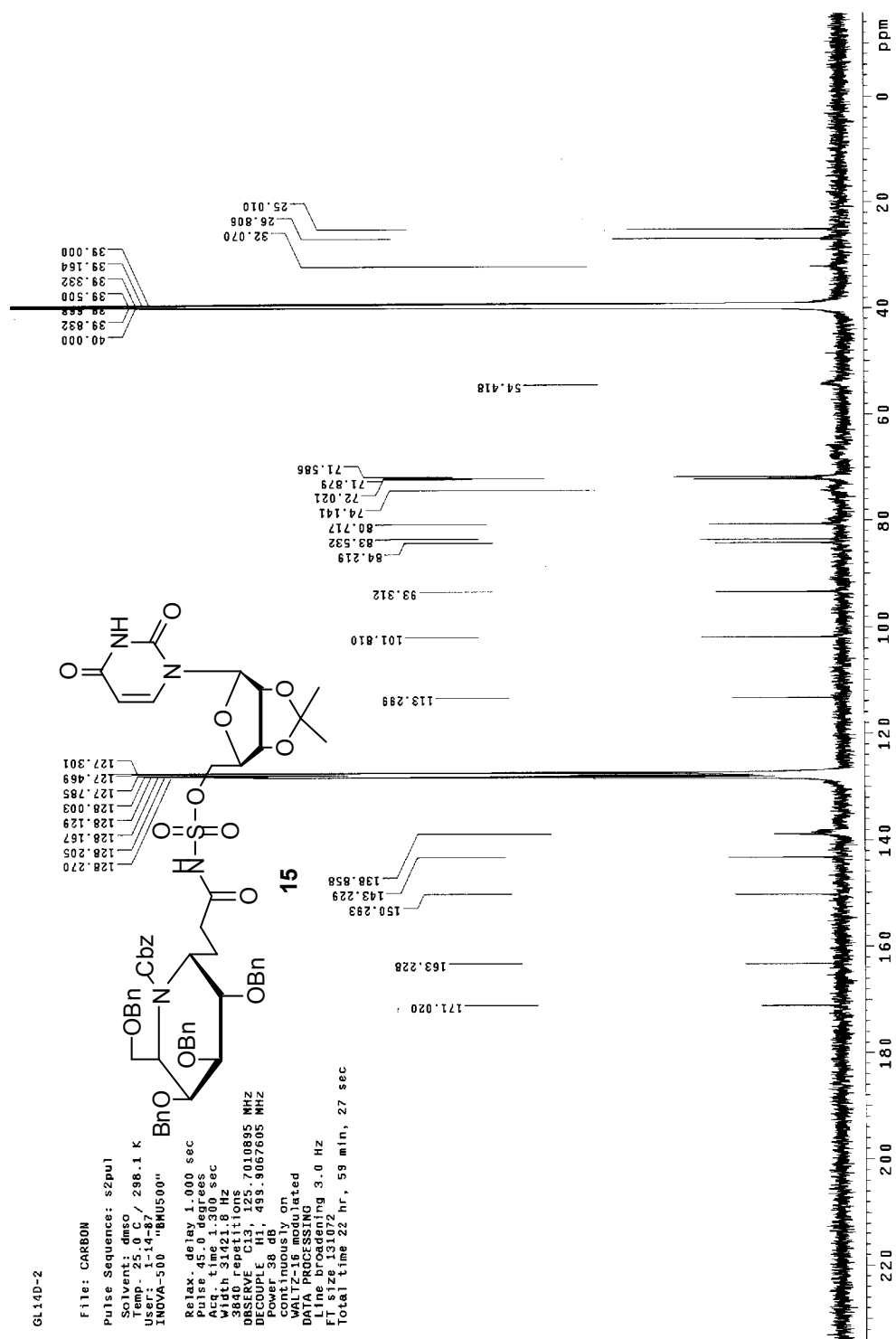












GtmC3-0910

File: CARBON

Pulse Sequence: s2puj

Solvent: DMSO-d₆

Temp: 25.0 °C / 296.1 K

INOVA-500 "BMUS00"

Relax. delay: 1.000 sec

Pulse delay: 300 nsec

Acq. time: 1.300 sec

Width: 31421.8 Hz

5248 repetitions

OBSERVE C13, 125.7006556 MHz

DECOUPLE H1, 499.9043860 MHz

Power 38 dB

continuously on

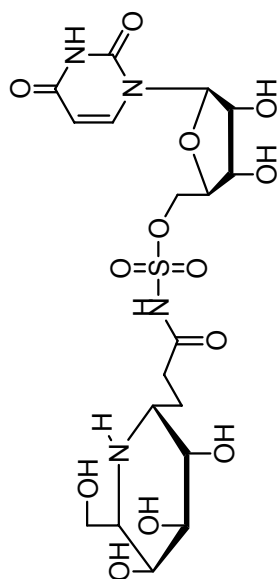
WALTZ-16 modulated

DATA PROCESSING

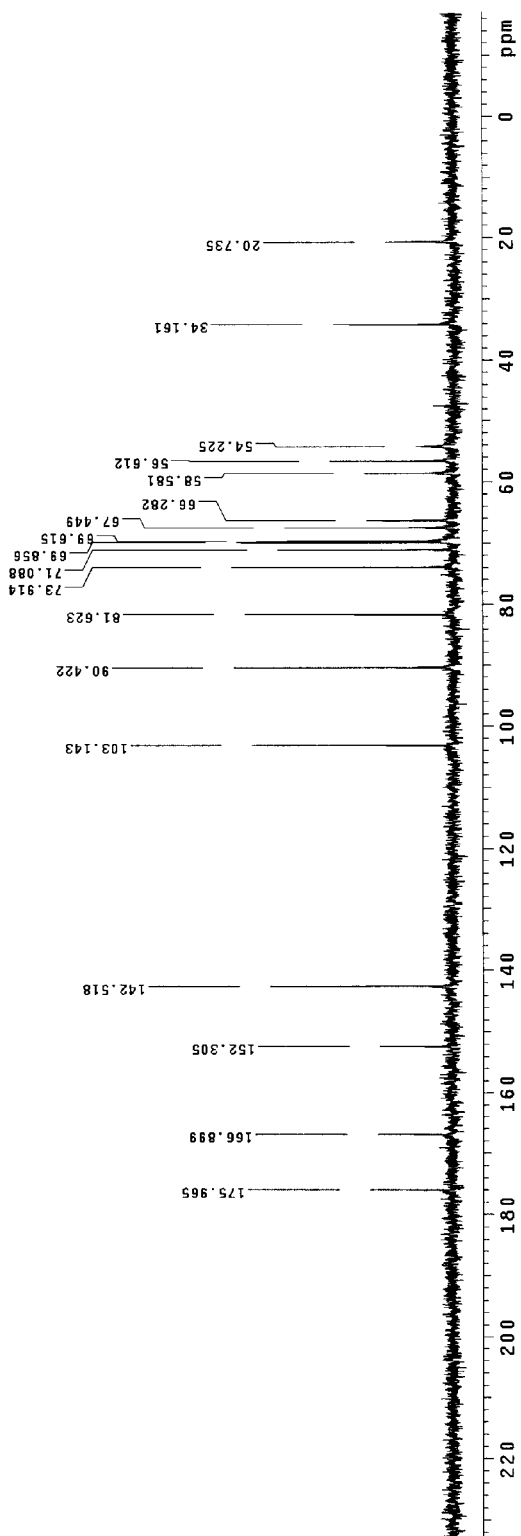
Line broadening 3.5 Hz

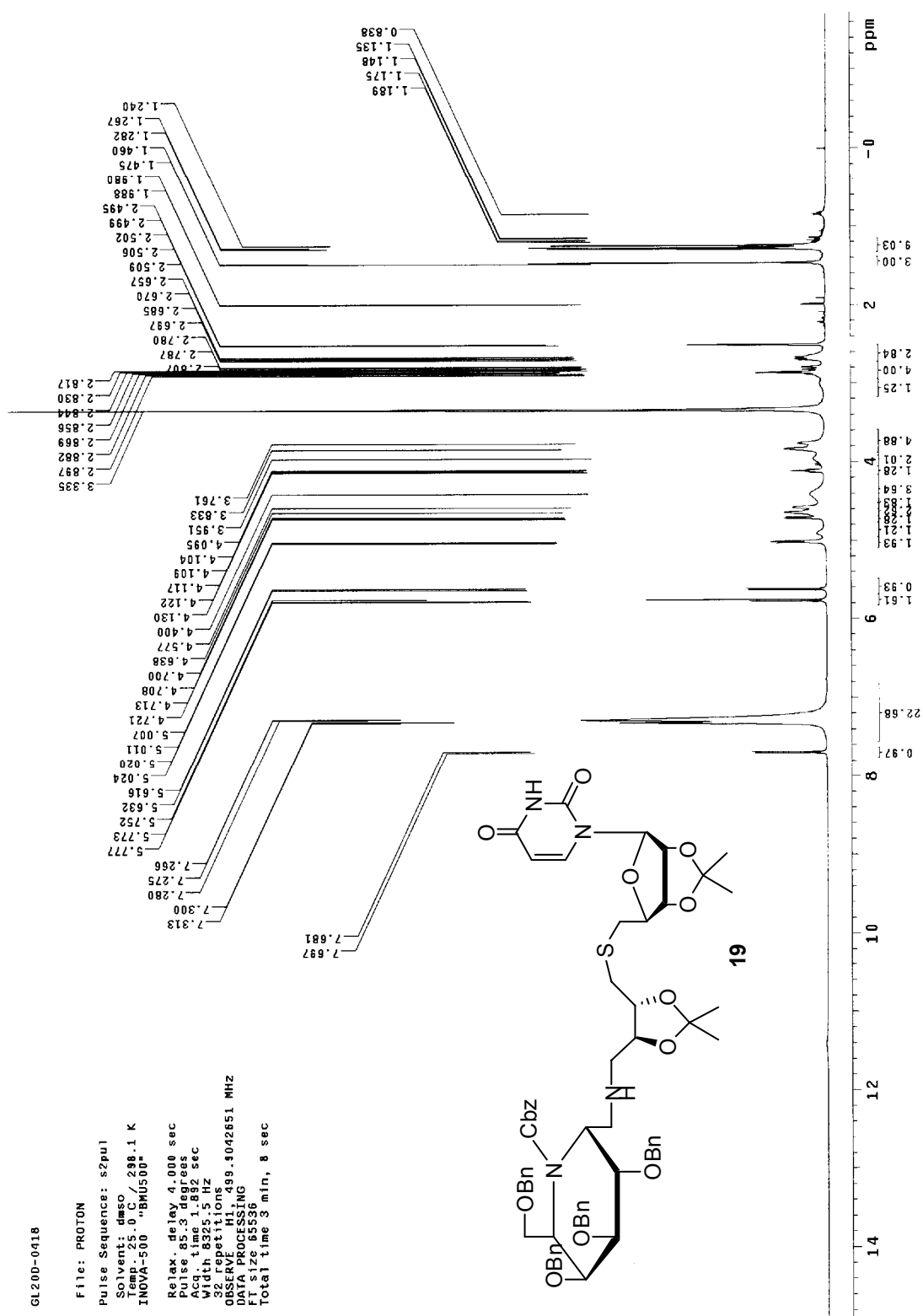
FT size 3172

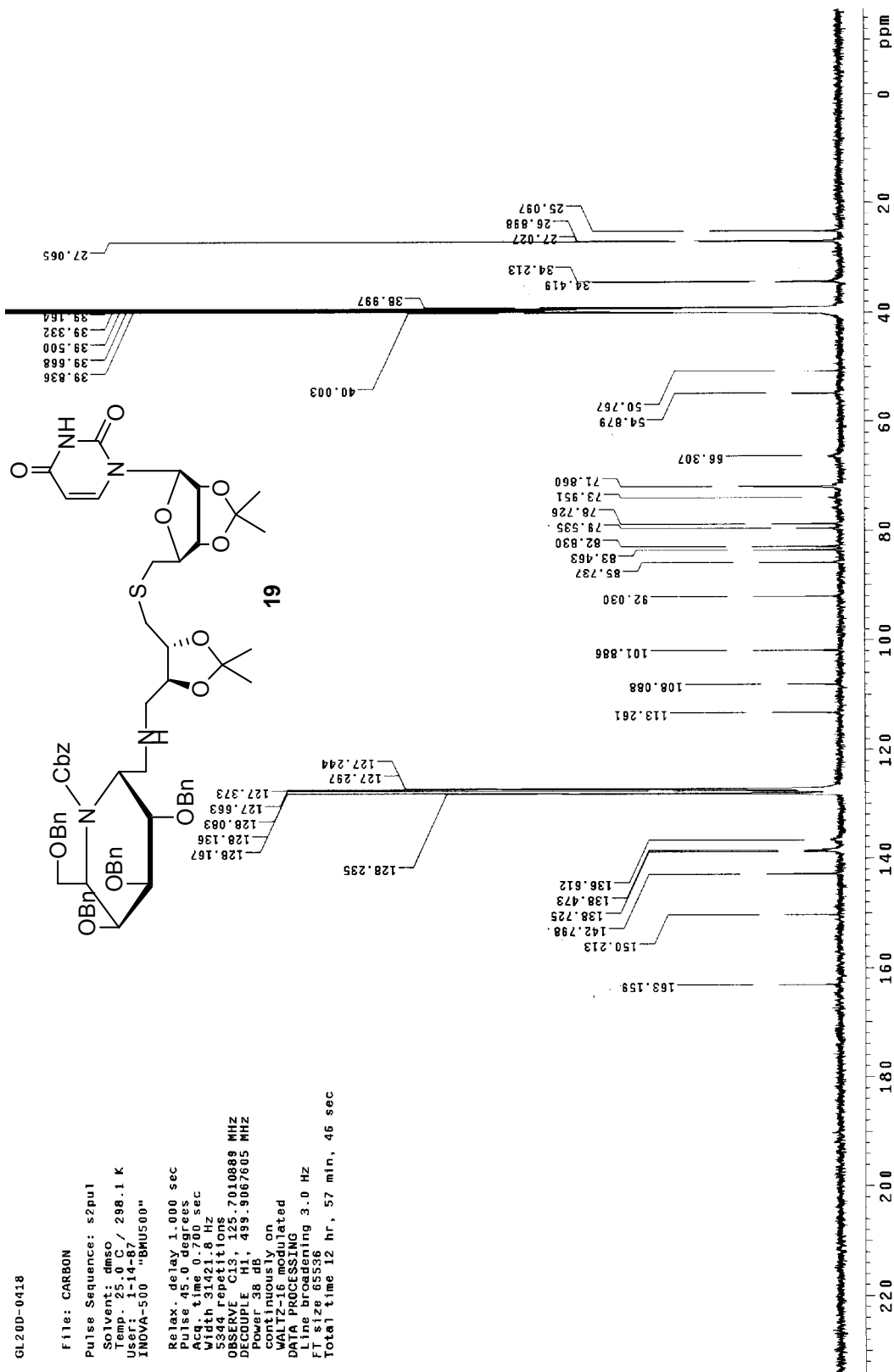
Total time 13 hr, 8 min, 15 sec

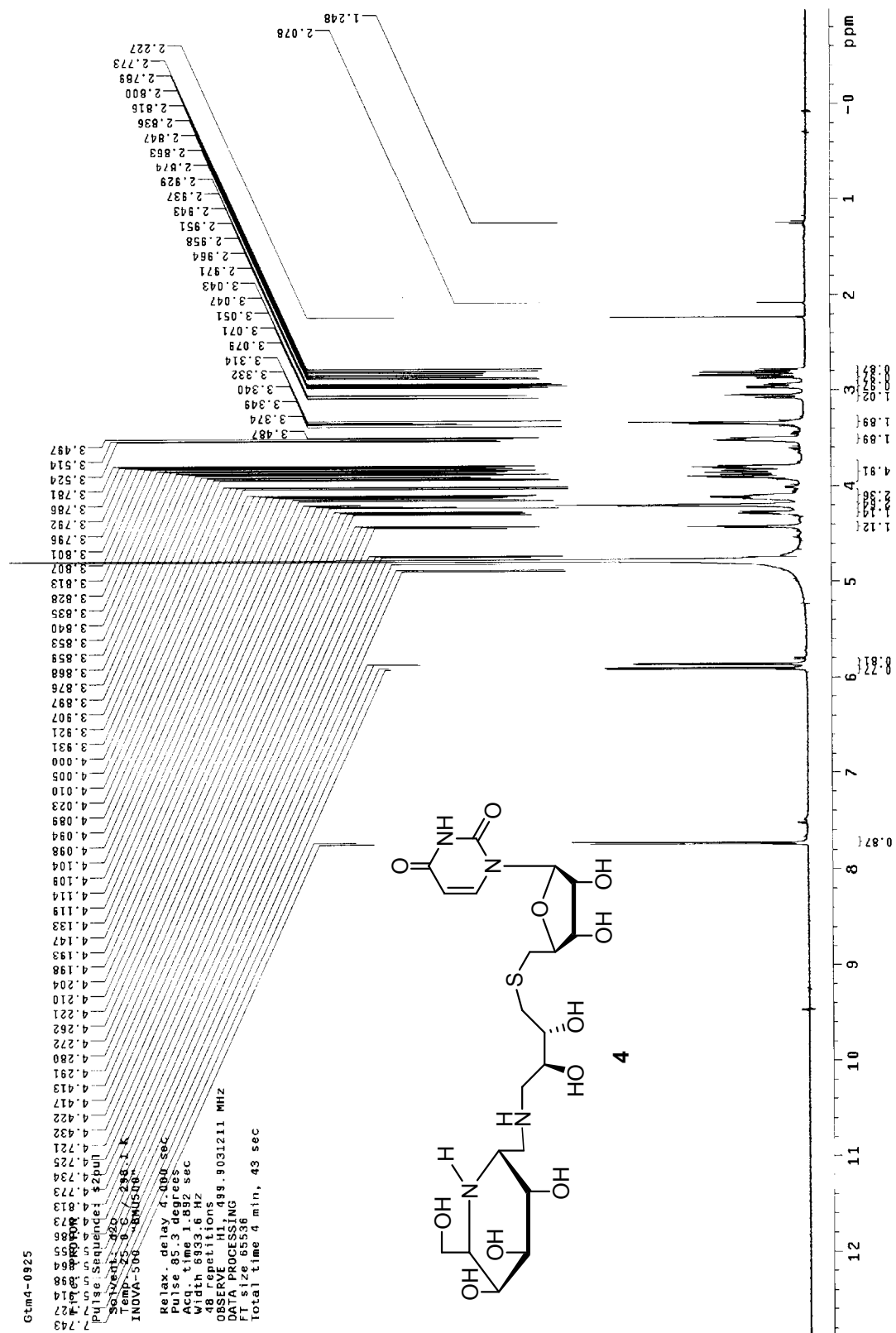


3









Gtmd-0925

File: CARBON

Pulse Sequence: s2pu1

Solvent: d2o

Temp.: 25.0 C / 298.1 K

User: 1-14-87

INOVA-500 "BMU500"

Relax. delay 1.000 sec

Pulse 45.0 degrees

Acq. time 1.800 sec

6000 Scans

27008 Resolutions

OBSERVE C13 125.7006546 MHZ

DECOUPLE H1 499.9056708 MHZ

Power 38 dB

continuously on

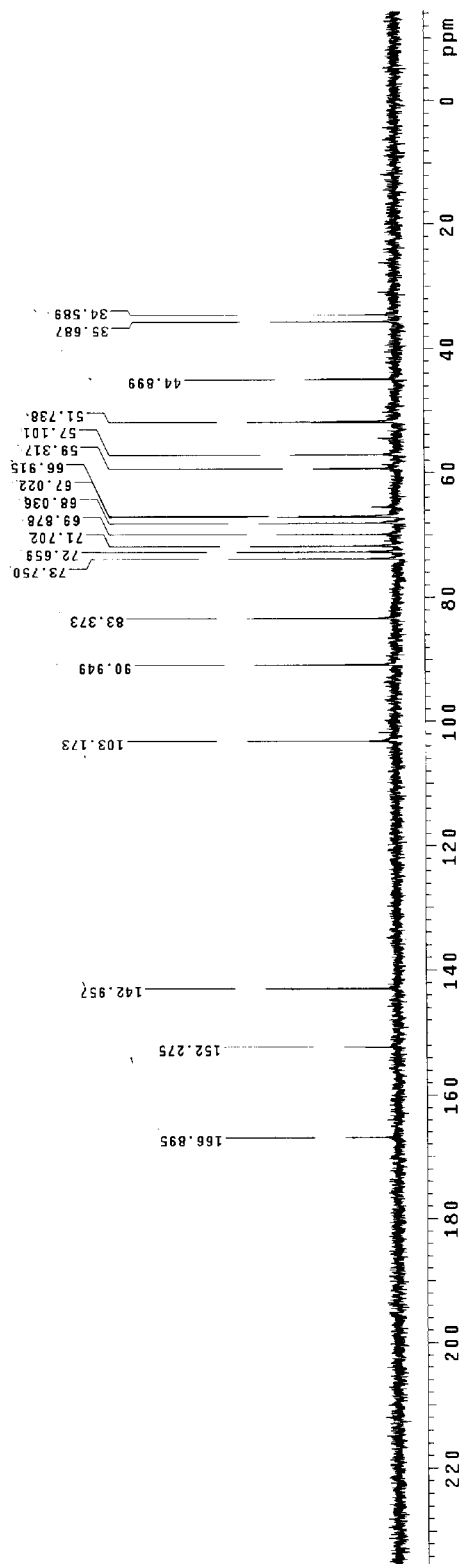
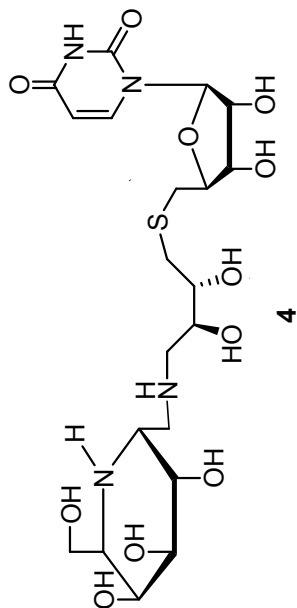
WALTZ-16 modulated

DATA PROCESSING

Line broadening 3.0 Hz

FT size 131024

Total time 19 hr., 42 min, 23 sec

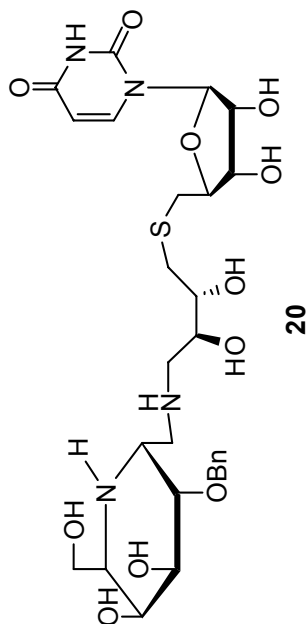


6tm4-2-0925

File: CARBON

Pulse Sequence: s2pul
 Solvent: d2o
 Temp: 25.0 C / 298.1 K
 User: 1-14-87
 INOVA-500 "BMUS00"

Relax. delay 1.000 sec
 Pulse 45.0 degrees
 Width 3421.300 sec
 Width 3421.300 sec
 9024 repetitions
 OBSERVE C13, 125.7006551 MHZ
 DECOUPLE H1, 499.9056708 MHZ
 Power 32 dB
 Locking On
 VOLTAGE limited
 DATA PROCESSING
 Line broadening 3.0 Hz
 FT size 131072
 Total time 19 hr, 42 min, 23 sec



129.675
 129.549

