

ELECTRONIC SUPPLEMENTARY INFORMATION

**The Biphenyl-Monitored Effective Size of Unsaturated Functional or
Fluorinated *ortho* Substituents.**

Renzo Ruzziconi, Sara Spizzichino, Andrea Mazzanti,*
Lodovico Lunazzi and Manfred Schlosser.**

Contents:

600 MHz ¹H NMR spectra of compounds **1-12**

compound 1 - C6H5 Inova600-Triple H1-s2pul-cd3cn Jul 6 2009

ACQUISITION PARAMETERS

Pulse Sequence: s2pul

Solvent: cd3cn

Temp. 25.0 C / 298.1 K

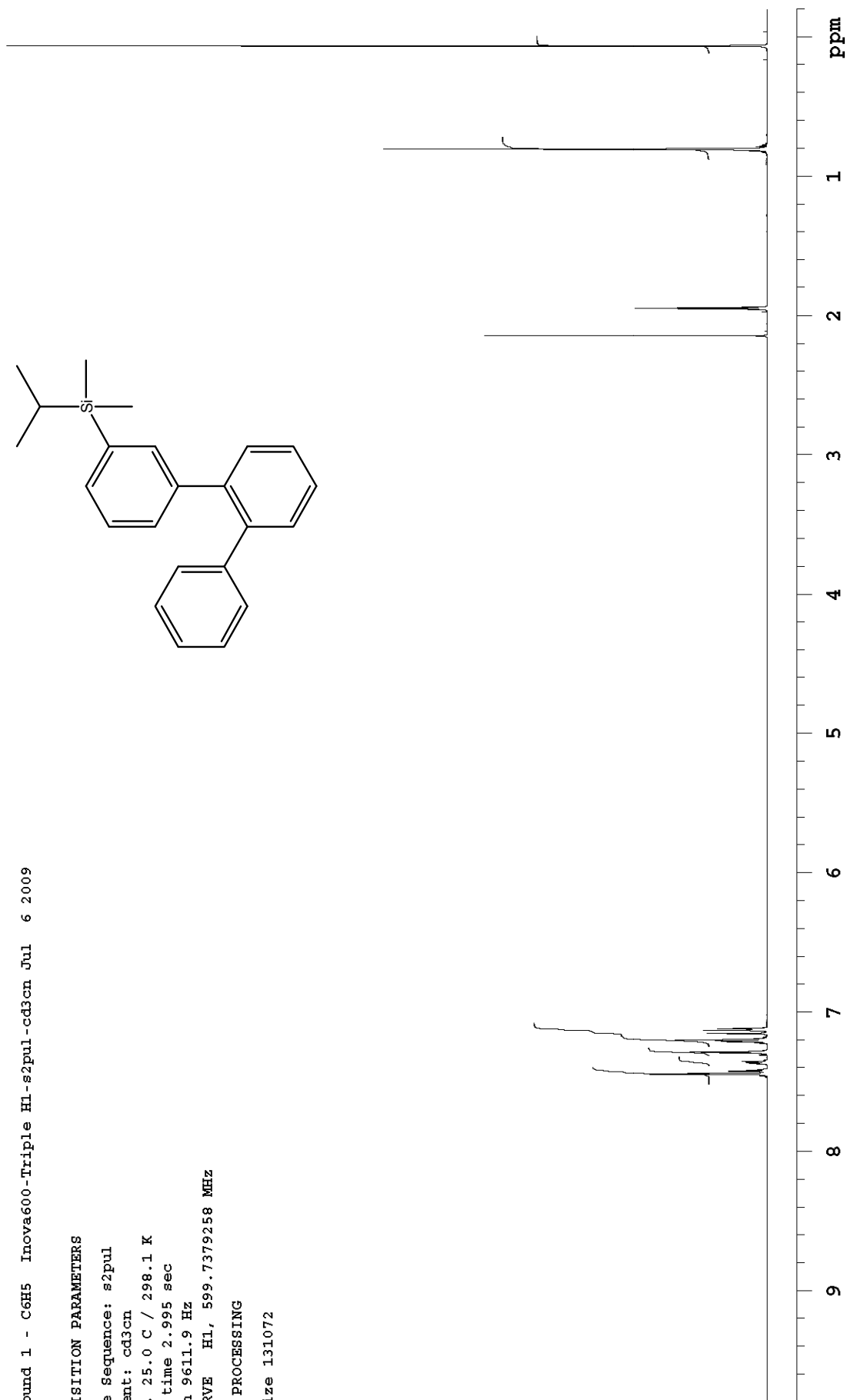
Acq. time 2.995 sec

Width 9611.9 Hz

OBSERVE H1, 599.7379258 MHz

DATA PROCESSING

FT size 131072



compound 2 - CH=CH2 Inova600-Triple H1-s2pul-cd3cn Jul 16 2009

ACQUISITION PARAMETERS

Pulse Sequence: s2pul

Solvent: cd3cn

Temp. 25.0 C / 298.1 K

Acq. time 2.995 sec

Width 9611.9 Hz

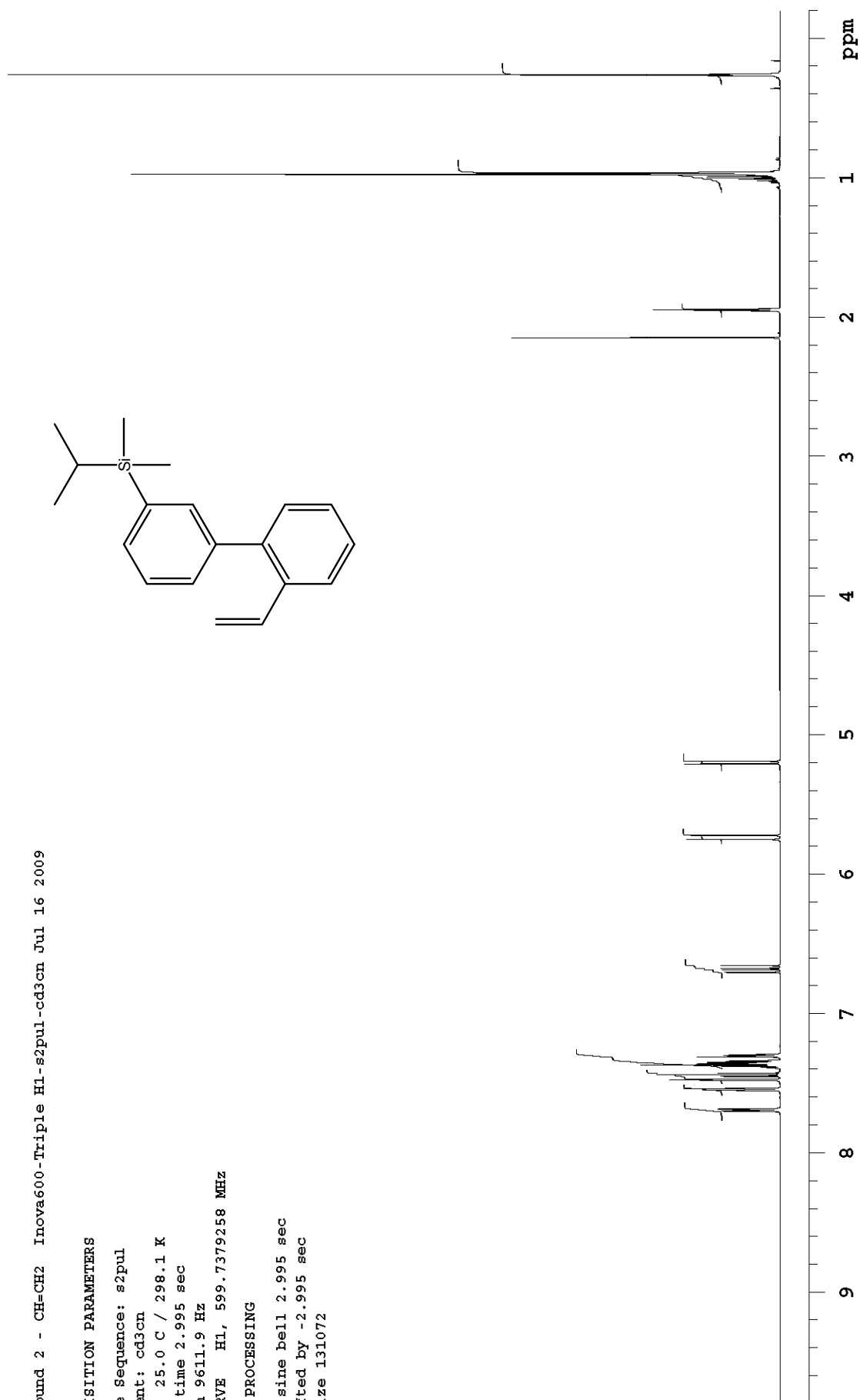
OBSERVE H1, 599.7379258 MHz

DATA PROCESSING

Sq. sine bell 2.995 sec

Shifted by -2.995 sec

FT size 131072



compound 3 - CCH Inova600-Triple H1-s2pul-cd3cn Jul 6 2009

ACQUISITION PARAMETERS

Pulse Sequence: s2pul

Solvent: cd3cn

Temp. 25.0 C / 298.1 K

Acq. time 2.995 sec

Width 9611.9 Hz

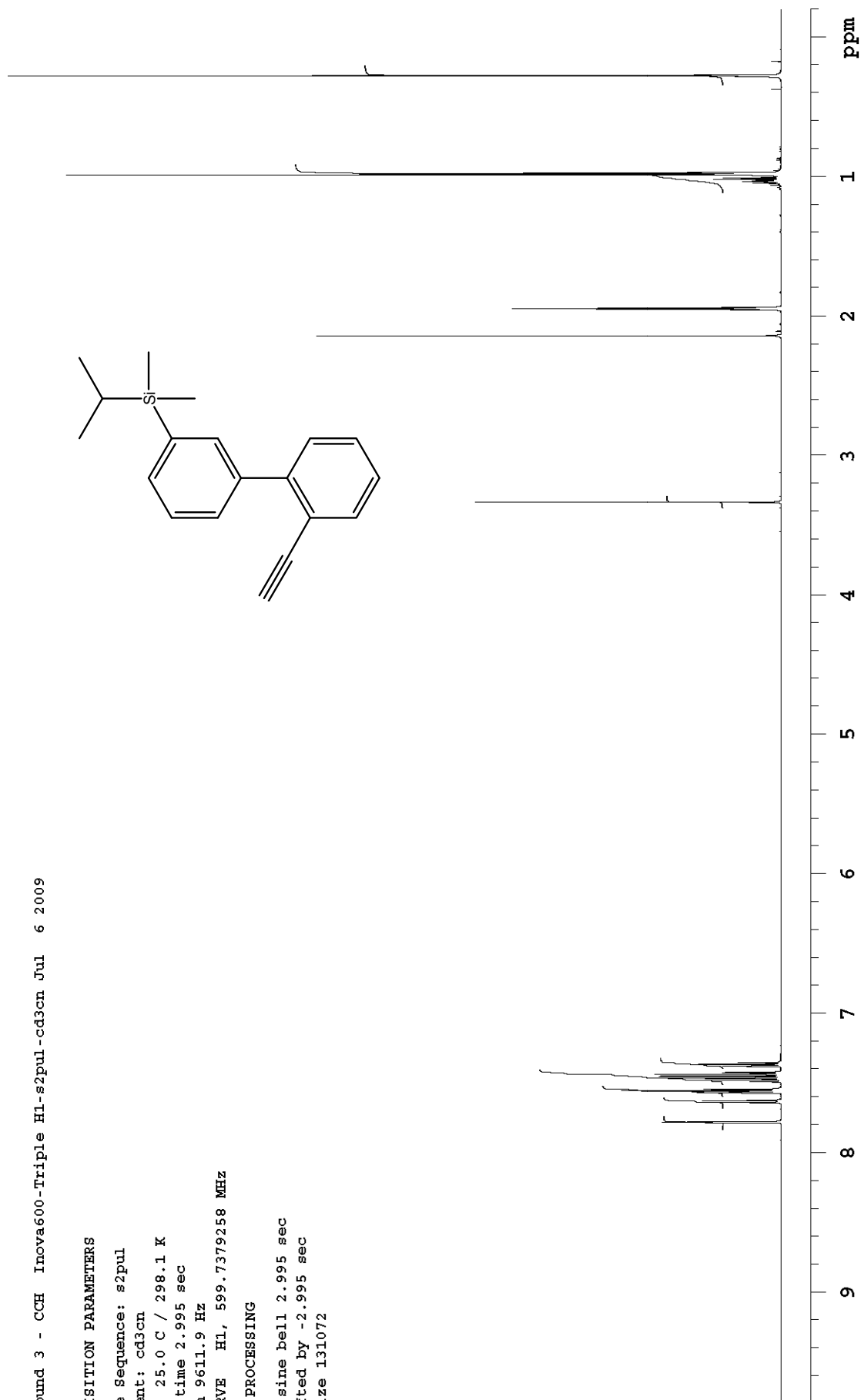
OBSERVE H1, 599.7379258 MHz

DATA PROCESSING

Sq. sine bell 2.995 sec

Shifted by -2.995 sec

FT size 131072



Pulse Sequence: s2pul

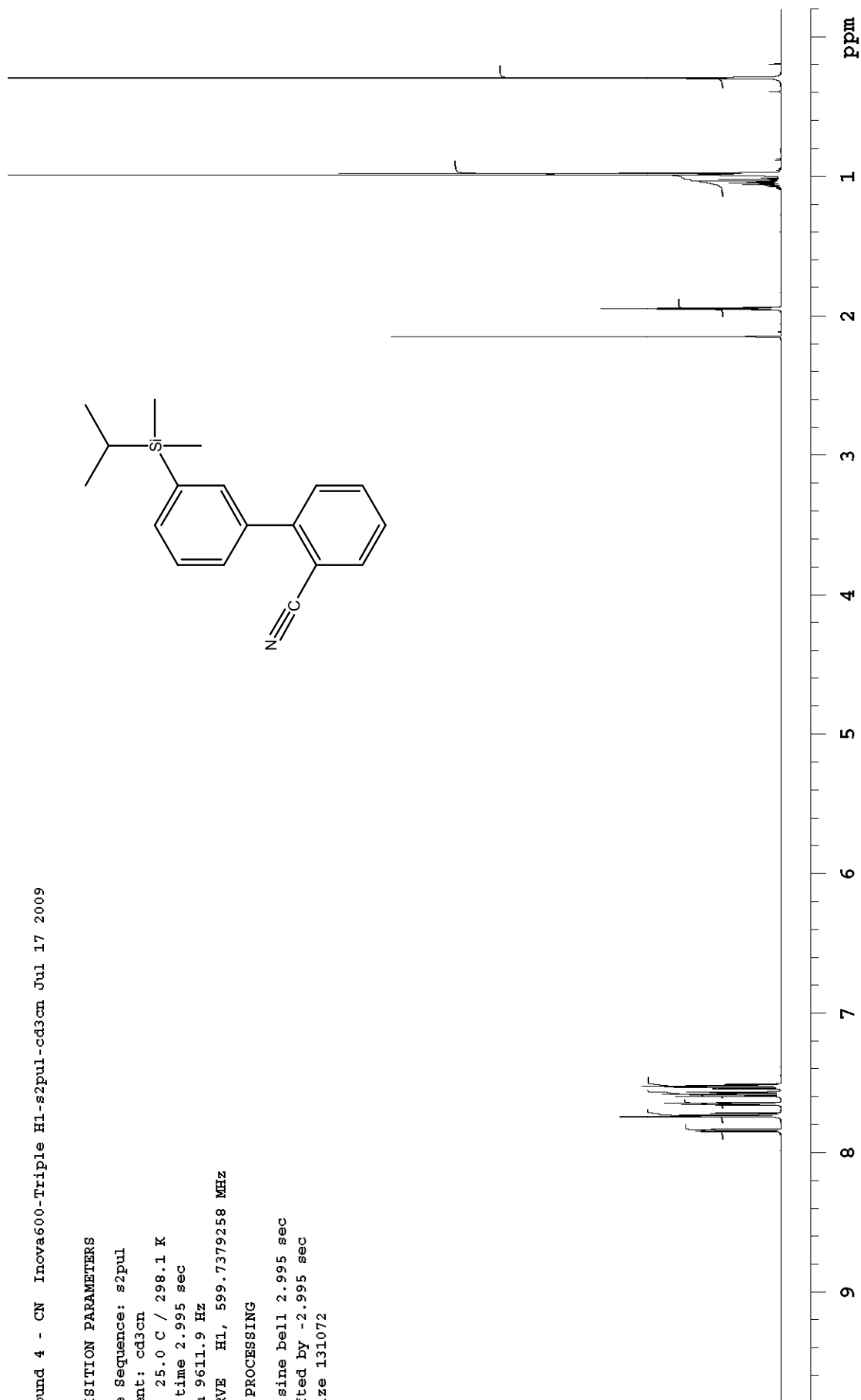
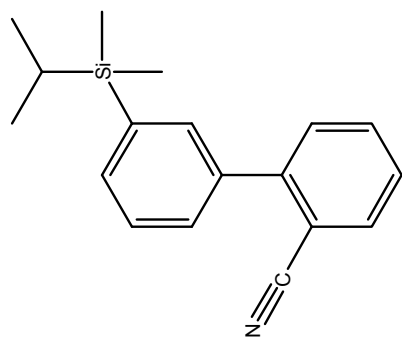
Temp. 25.0 C / 298.1 K

Width 9611.9 Hz

221001Z JUL 77 FAYTADTO

Sq. sine bell 2.995 sec

FT size 131072



Pulse Sequence: s2pul
Solvent: cd3cn
Temp. 25.0 C / 298.1 K
Acq. time 2.995 sec
Width 9611.9 Hz

DATA PROCESSING

ound 5 - CH2OH Inova600-Triple H1-s2pul-cd3cn Mar 5 2010

POSITION PARAMETERS

Sequence: s2pul
Solvent: cd3cn
Temp: 25.0 C / 298.1 K
Acq time 2.995 sec
F1 9611.9 Hz
F2 599.7379258 MHz

PROCESSING

Size 65536

CC(C)(C)Si(C)(C)c1ccc(cc1)-c2ccccc2CO

10
9
8
7
6
5
4
3
2
1
0

ppm

compound 6 - CHO Inova600-Triple H1-s2pul-cd3cn Jul 16 2009

ACQUISITION PARAMETERS

Pulse Sequence: s2pul

Solvent: cd3cn

Temp. 25.0 C / 298.1 K

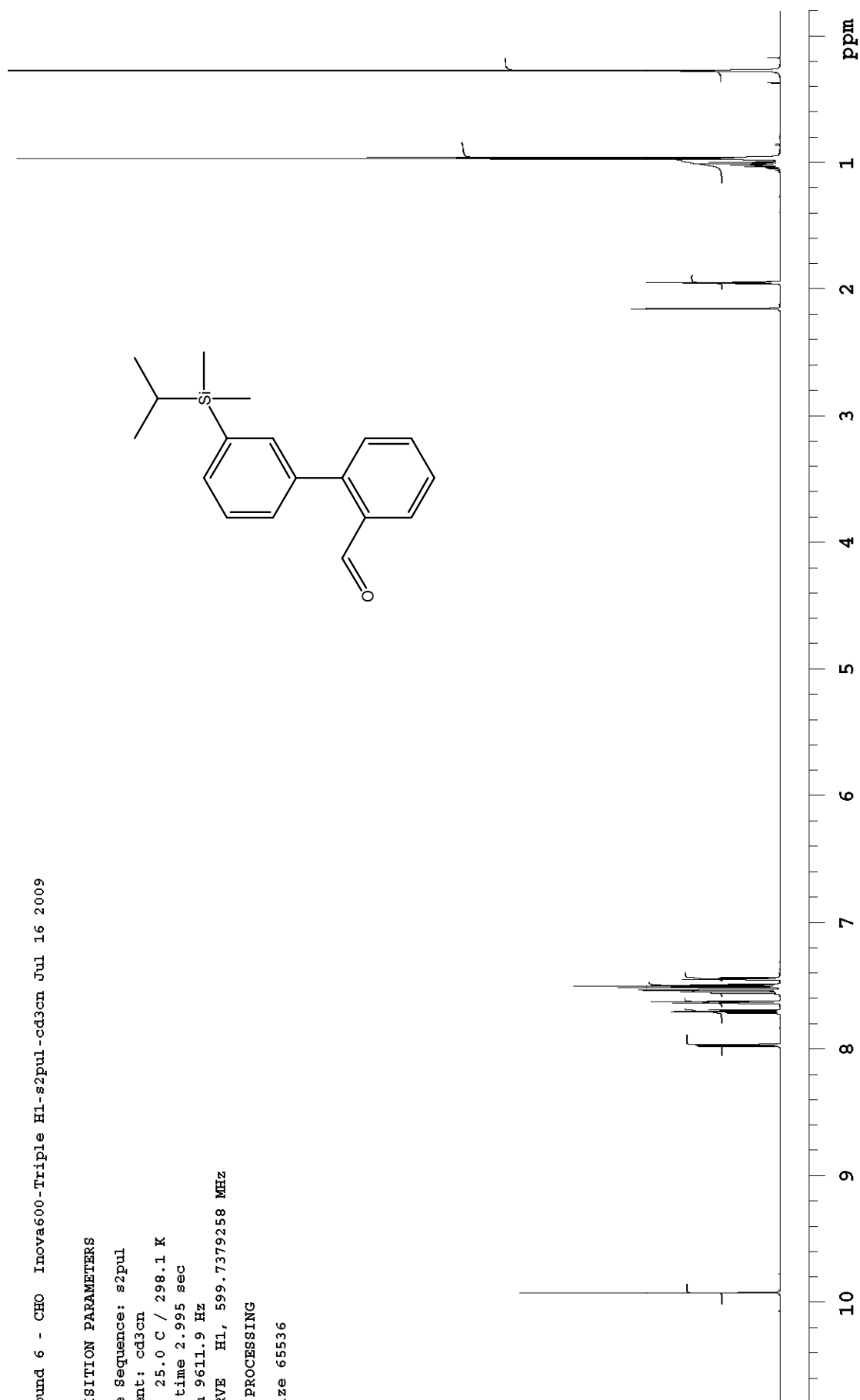
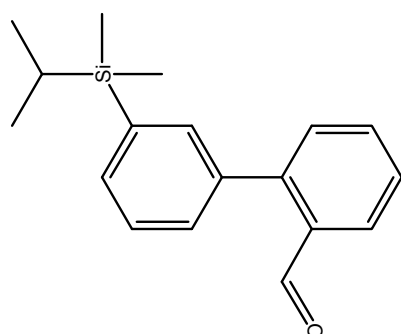
Acq. time 2.995 sec

Width 9611.9 Hz

OBSERVE H1, 599.7379258 MHz

DATA PROCESSING

FT size 65536



compound 7 - COOH Inova600-Triple HL-s2pul-cd3cn Jul 10 2009

ACQUISITION PARAMETERS

Pulse Sequence: s2pul

Solvent: cd3cn

Temp. 25.0 C / 298.1 K

Acq. time 3.000 sec

Width 9611.9 Hz

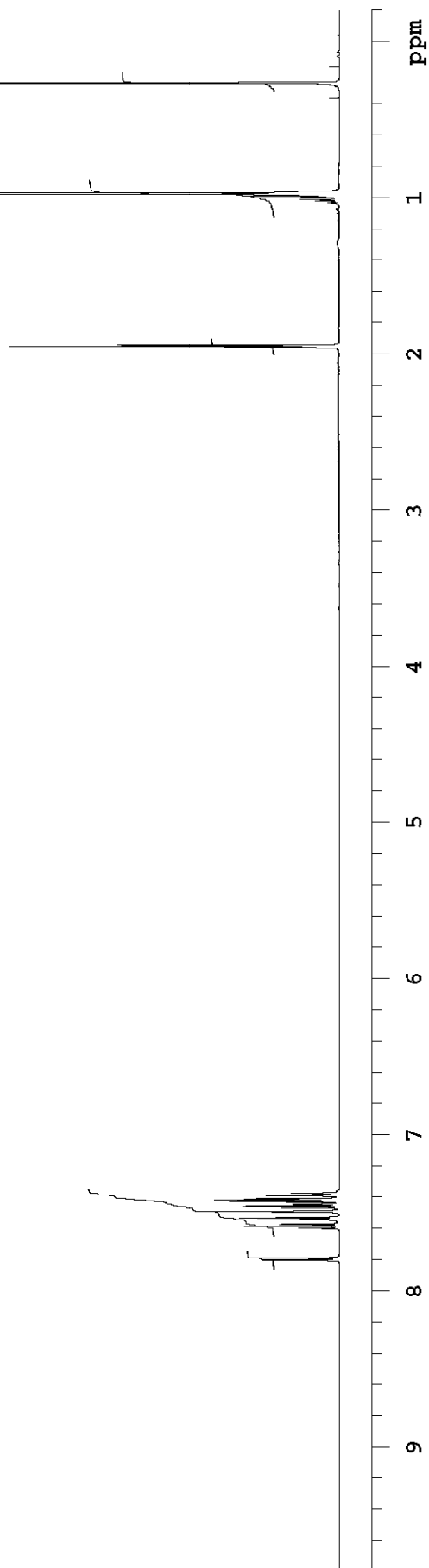
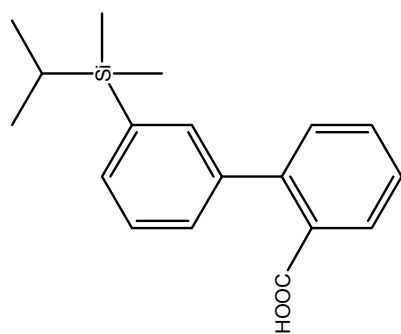
OBSERVE H1, 599.7379258 MHz

DATA PROCESSING

Sq. sine bell 3.000 sec

Shifted by -3.000 sec

FT size 131072



compound 8 - COOMe Inova600-Triple H1-s2pul-cd3cn Jul 17 2009

ACQUISITION PARAMETERS

Pulse Sequence: s2pul

Solvent: cd3cn

Temp. 25.0 C / 298.1 K

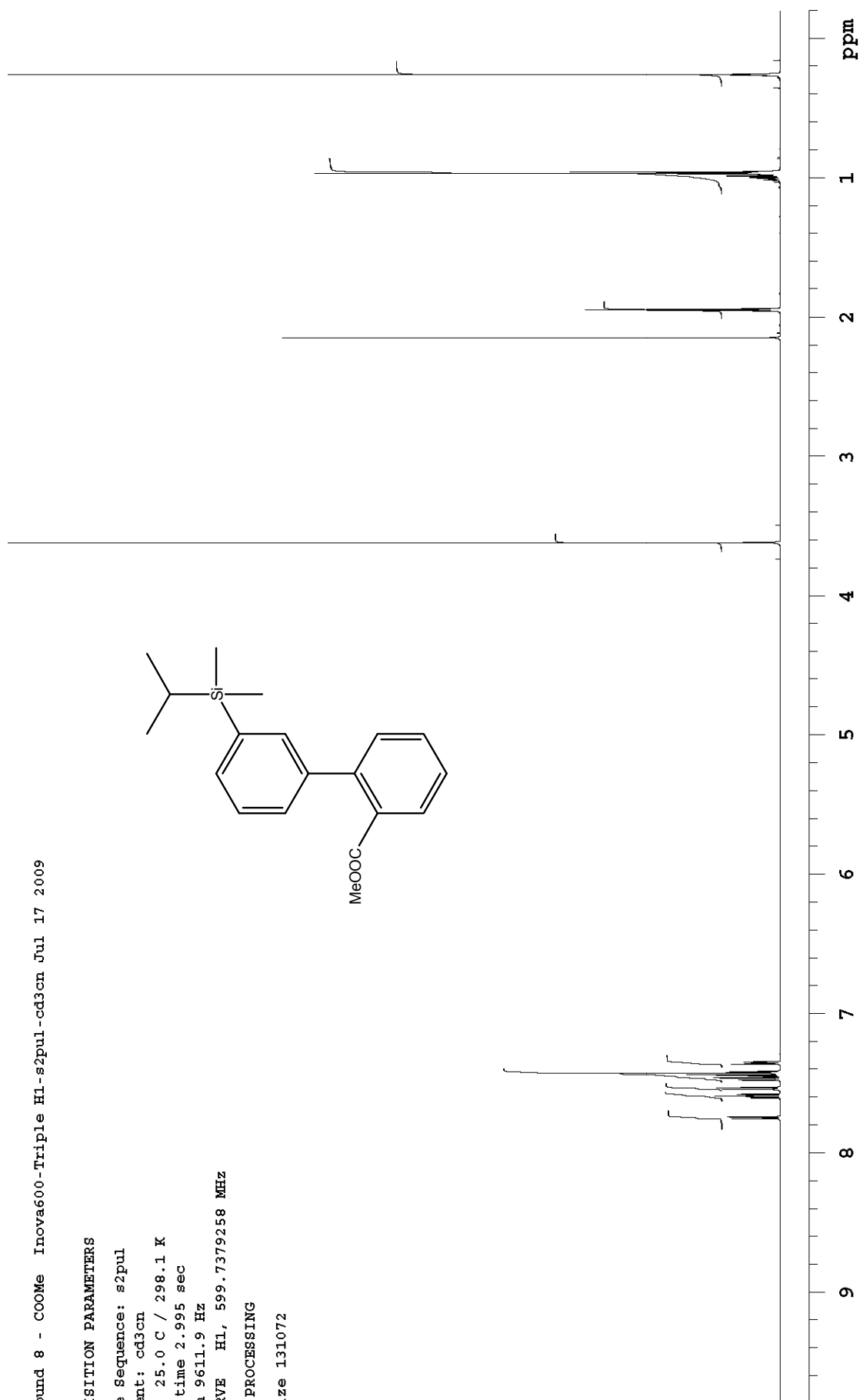
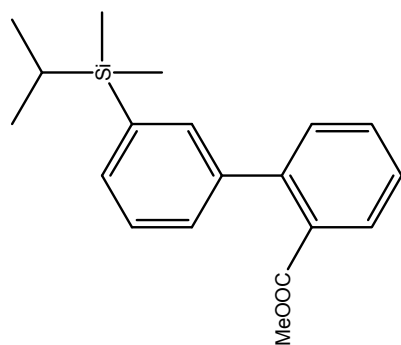
Acq. time 2.995 sec

Width 9611.9 Hz

OBSERVE H1, 599.7379258 MHz

DATA PROCESSING

FT size 131072



compound 9 - C6F5 Inova600-Triple H1-s2pul-cd3cn Mar 10 2010

ACQUISITION PARAMETERS

Pulse Sequence: s2pul

Solvent: cd3cn

Temp. 25.0 C / 298.1 K

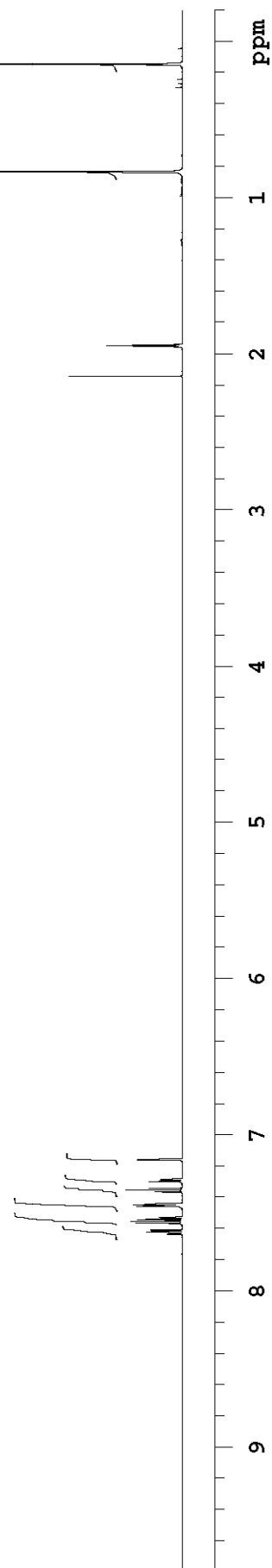
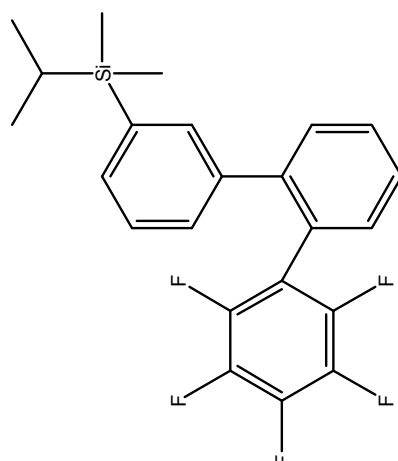
Acq. time 2.995 sec

Width 9611.9 Hz

OBSERVE H1, 599.7379258 MHz

DATA PROCESSING

FT size 65536



compound 10 - (CF₃)₂-OH Inova600-Triple H1-s2pul-cd3cn Mar 9 2010

ACQUISITION PARAMETERS

Pulse Sequence: s2pul

Solvent: cd3cn

Temp. 25.0 C / 298.1 K

Acq. time 2.995 sec

Width 9611.9 Hz

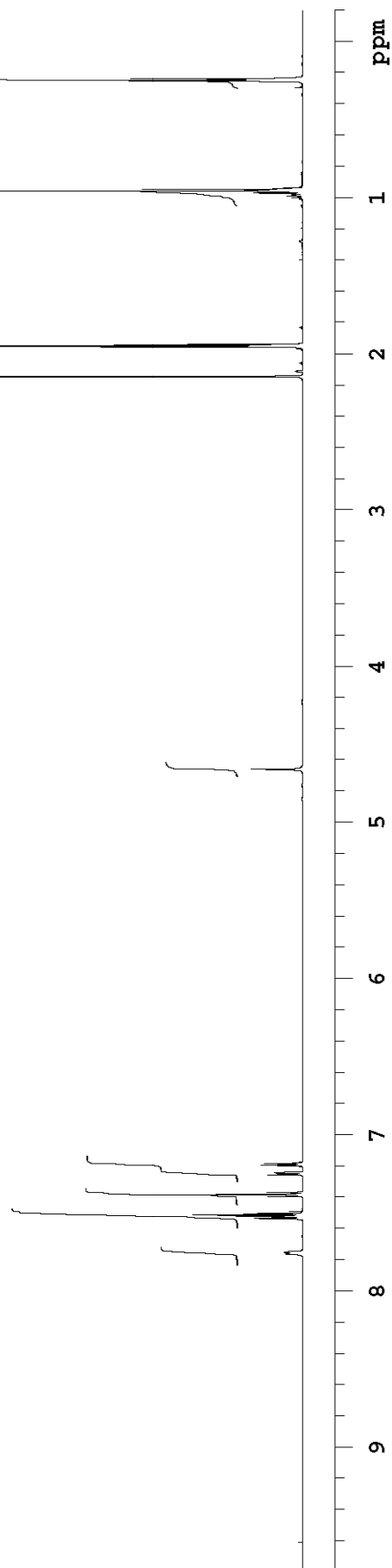
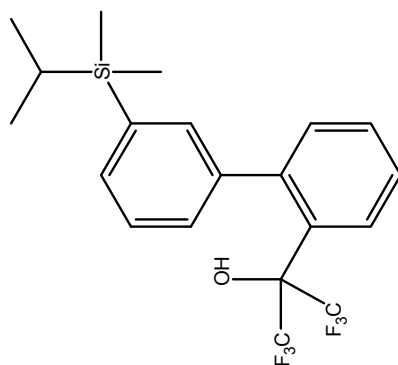
OBSERVE H1, 599.7379258 MHz

DATA PROCESSING

Sq. sine bell 2.995 sec

Shifted by -2.995 sec

FT size 131072



compound 11 - CF3 Inova600-Triple H1-s2pul-cd3cn Mar 4 2008

ACQUISITION PARAMETERS

Pulse Sequence: s2pul

Solvent: cd3cn

Temp. 25.0 C / 298.1 K

Acq. time 2.995 sec

Width 9611.9 Hz

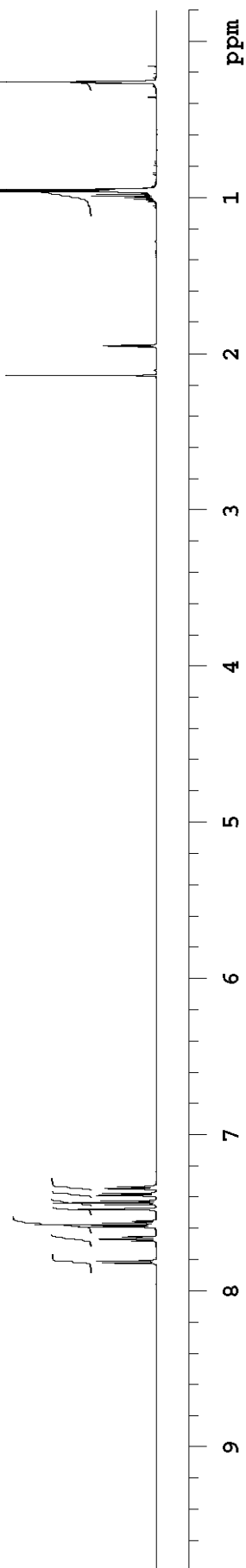
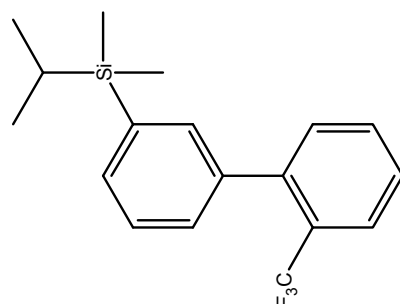
OBSERVE H1, 599.7379247 MHz

DATA PROCESSING

Sq. sine bell 2.995 sec

Shifted by -2.995 sec

FT size 131072



compound 12 - OCF3 Inova600-Triple H1-s2pul-cd3cn Mar 11 2010

ACQUISITION PARAMETERS

Pulse Sequence: s2pul

Solvent: cd3cn

Temp. 25.0 C / 298.1 K

Acq. time 2.995 sec

Width 9611.9 Hz

OBSERVE H1, 599.7379258 MHz

DATA PROCESSING

Sq. sine bell 2.995 sec

Shifted by -2.995 sec

FT size 131072

