

Supporting information

One-pot double functionalisation of π -deficient heterocyclic lithium reagents.

*Anthony Chartoire, Corinne Comoy and Yves Fort**

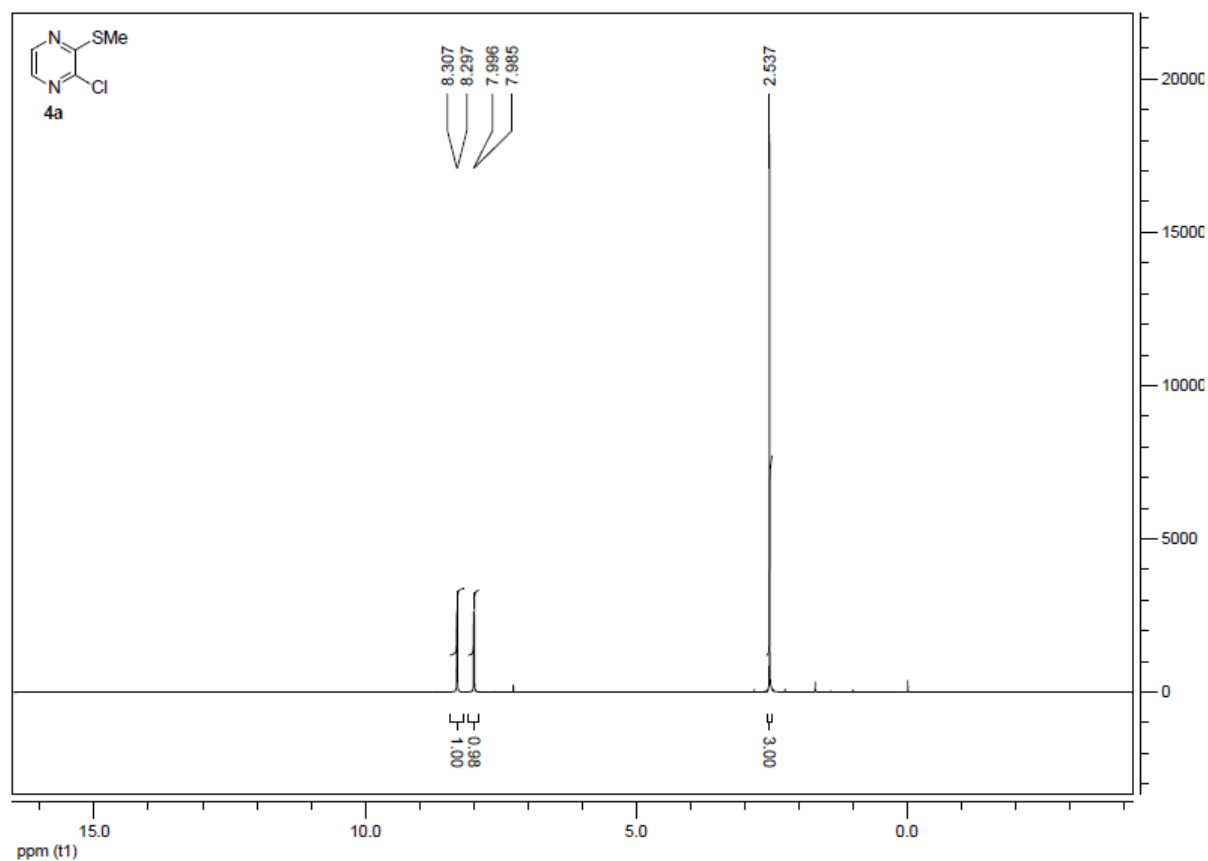
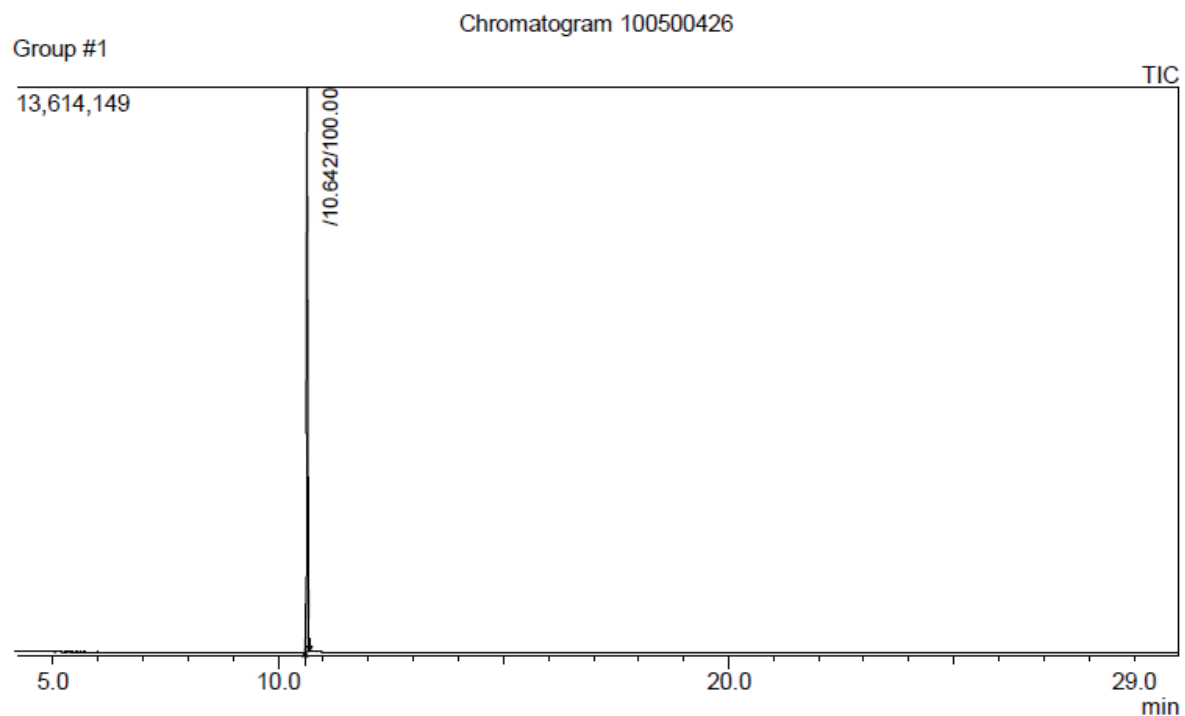
Groupe Synthèse Organométallique et Réactivité, SRSMC, Nancy Université, CNRS,
B.P.239, Boulevard des aiguillettes, F-54506 Vandoeuvre-les-Nancy, France.

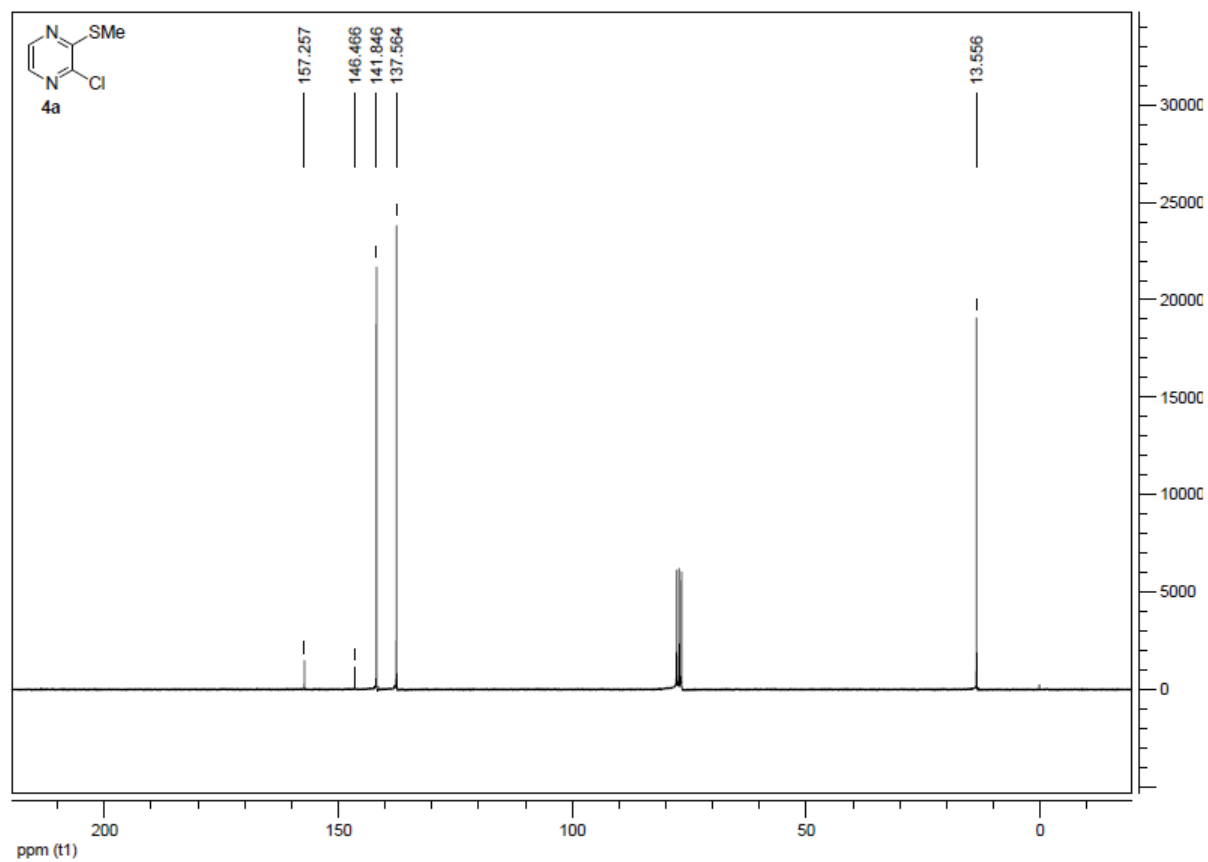
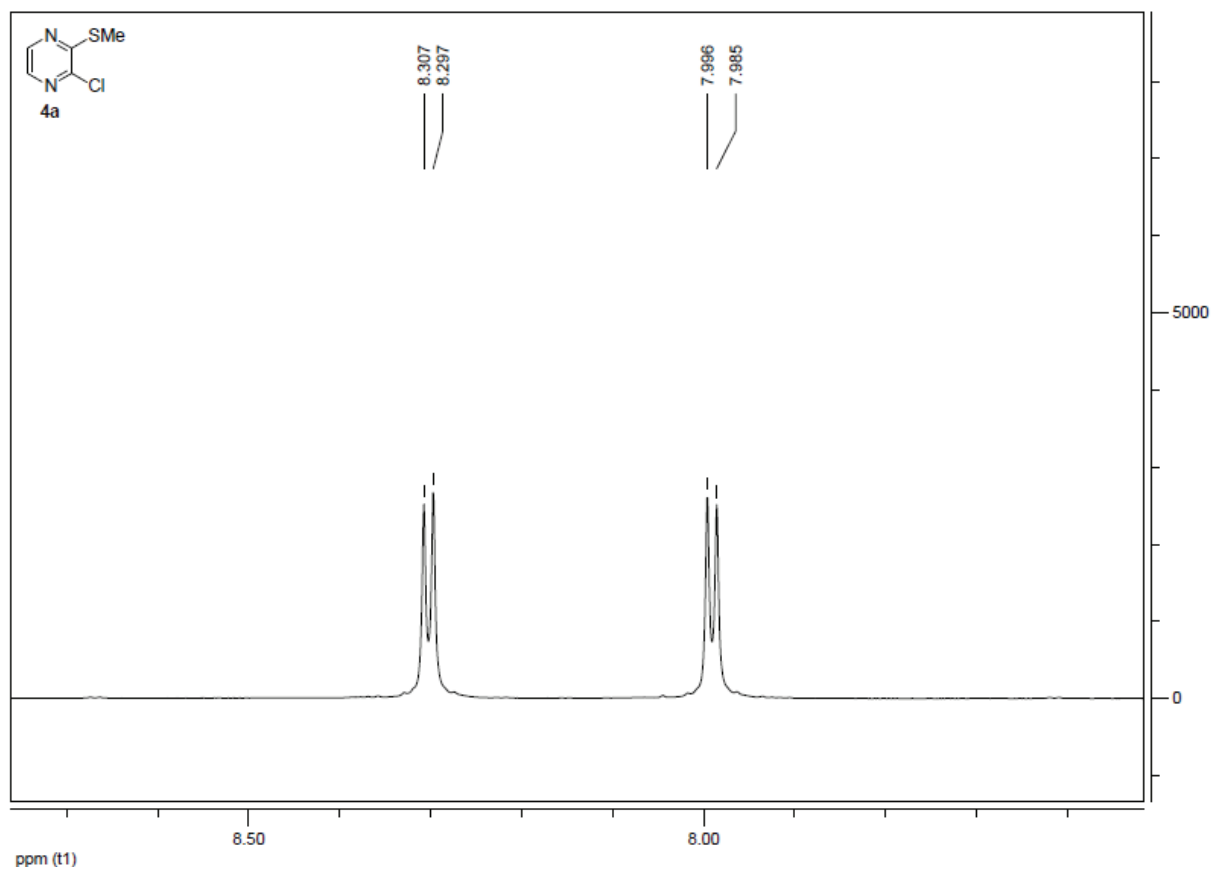
Table of contents

GC and NMR spectra of new compounds.....	S2
GC, ^1H and ^{13}C for 4a.....	S2
GC, ^1H and ^{13}C for 5a.....	S4
GC, ^1H and ^{13}C for 4b.	S7
GC, ^1H and ^{13}C for 5b.	S9
GC, ^1H and ^{13}C for 7b (+7a).....	S11
GC, ^1H and ^{13}C for 8.	S14
GC, ^1H and ^{13}C for 9b.	S16
GC, ^1H and ^{13}C for 10b.	S19
GC, ^1H and ^{13}C for 11a.....	S22
GC, ^1H and ^{13}C for 11b.	S25
GC, ^1H and ^{13}C for 12b.	S28
GC, ^1H and ^{13}C for 13b.	S30
GC, ^1H and ^{13}C for 14b.	S32
GC, ^1H and ^{13}C for 15b.	S34

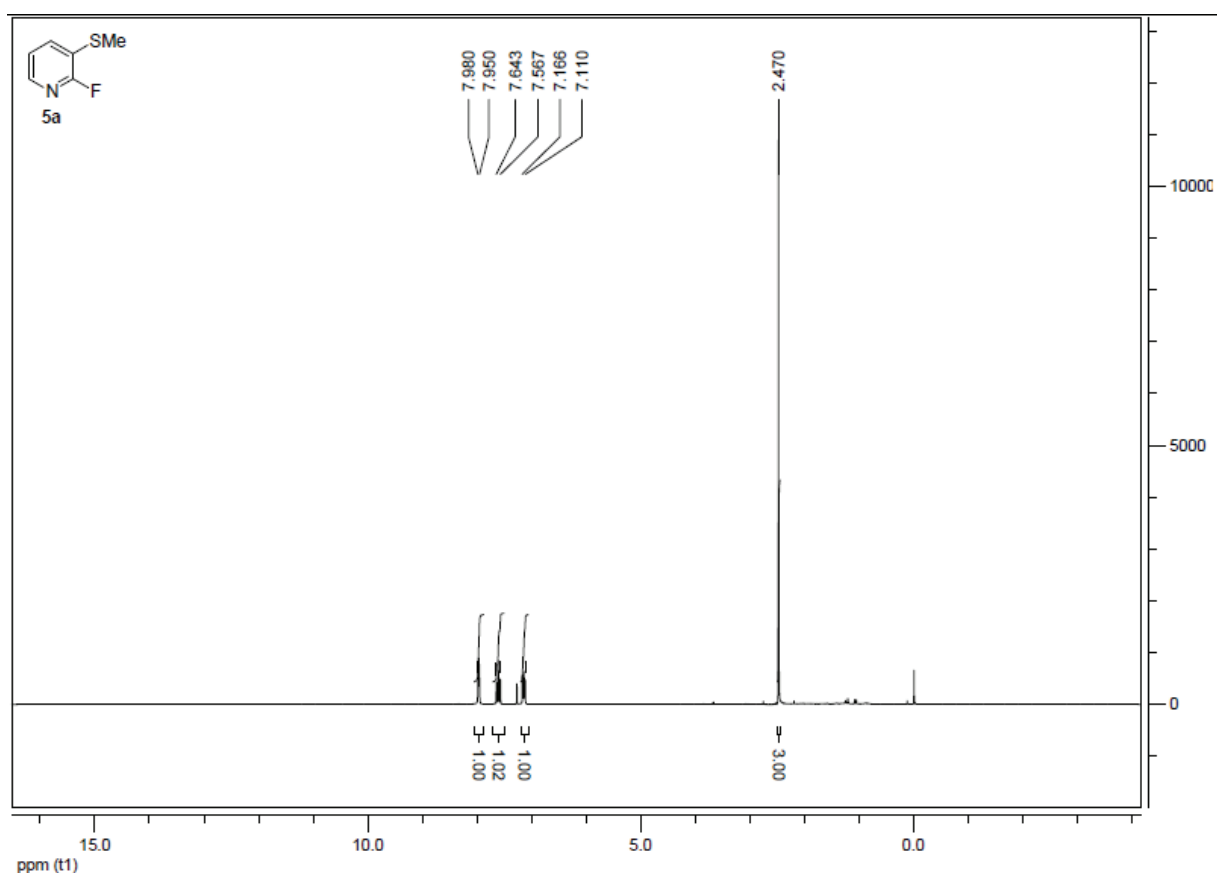
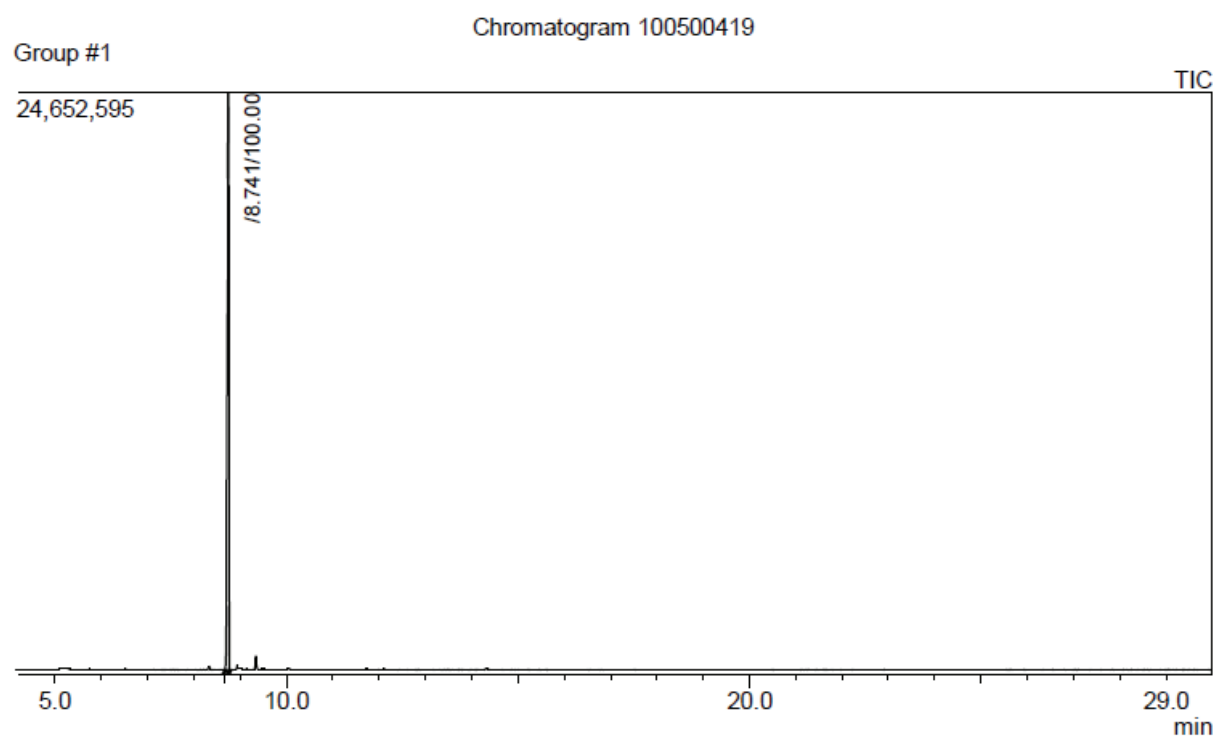
GC and NMR spectra of new compounds

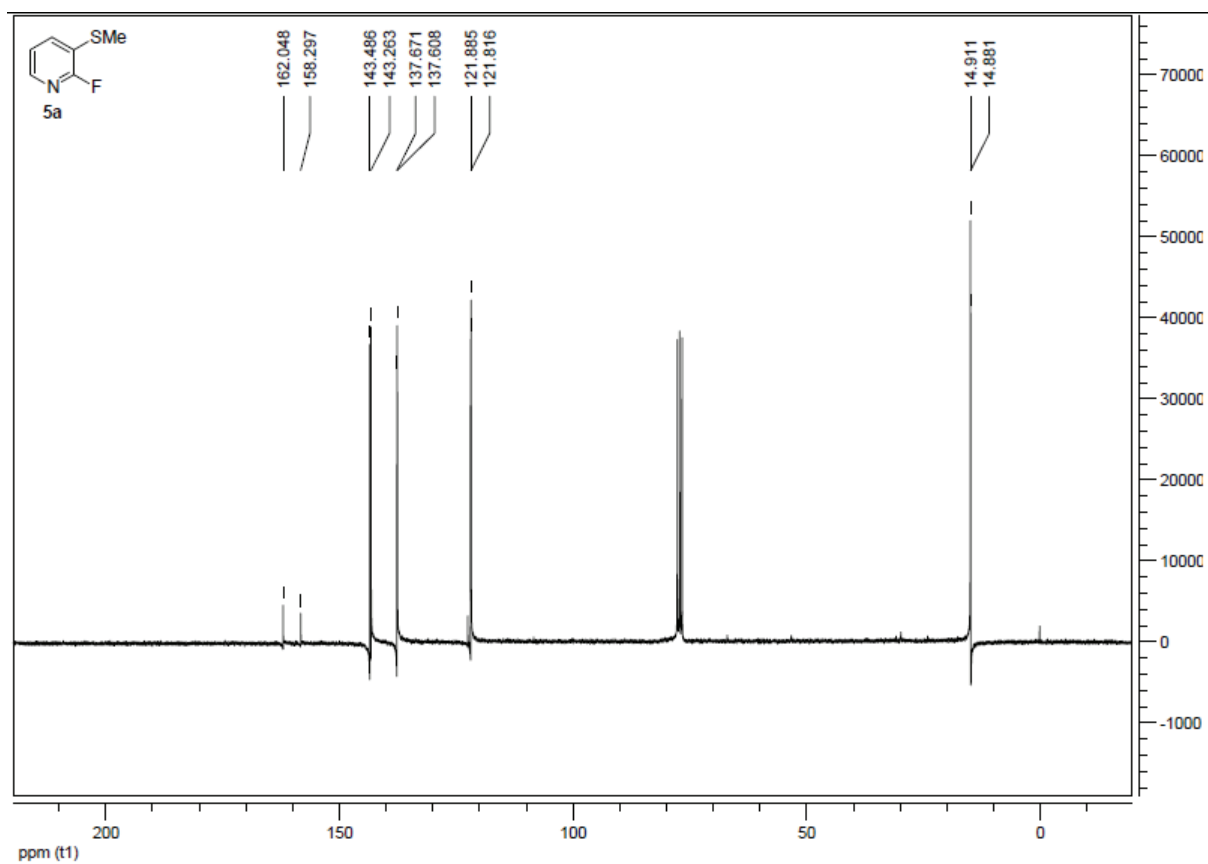
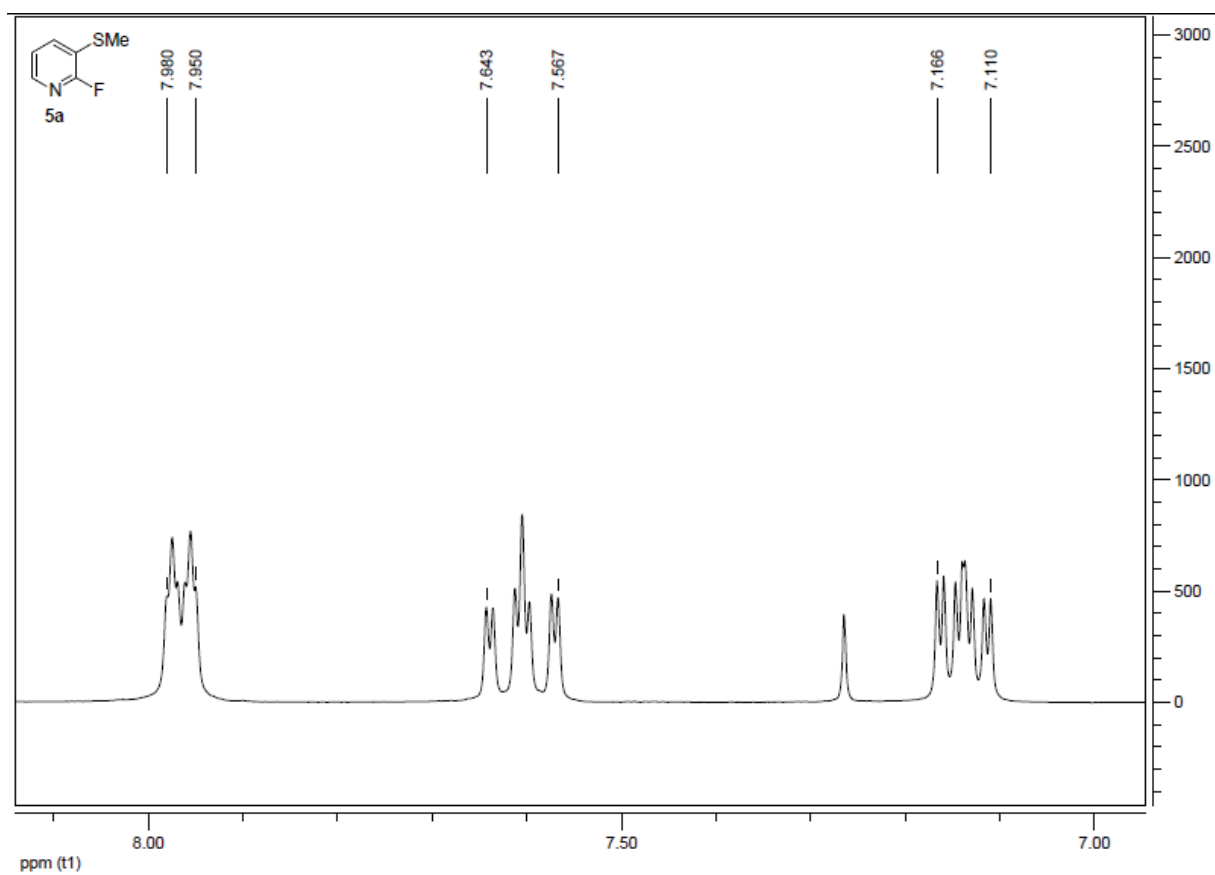
GC, ^1H and ^{13}C for 4a.

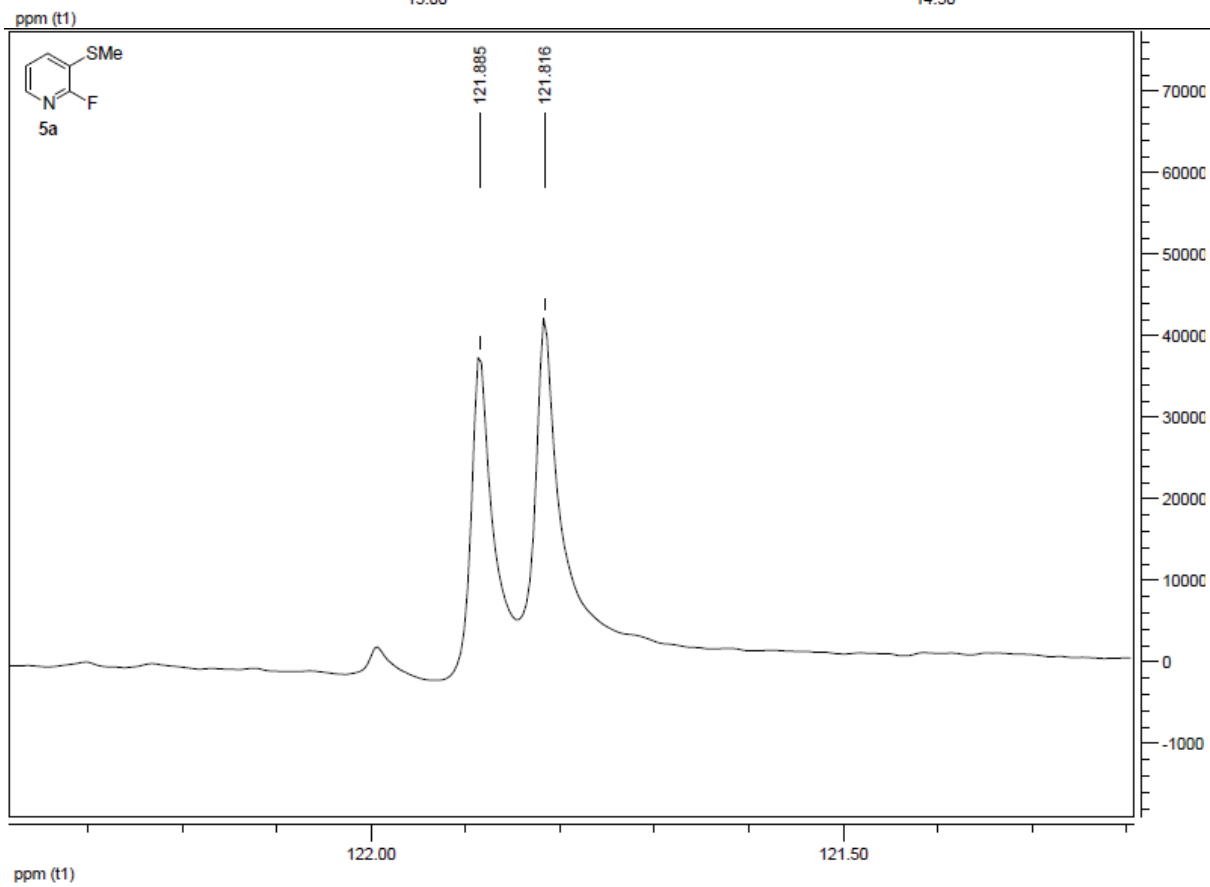
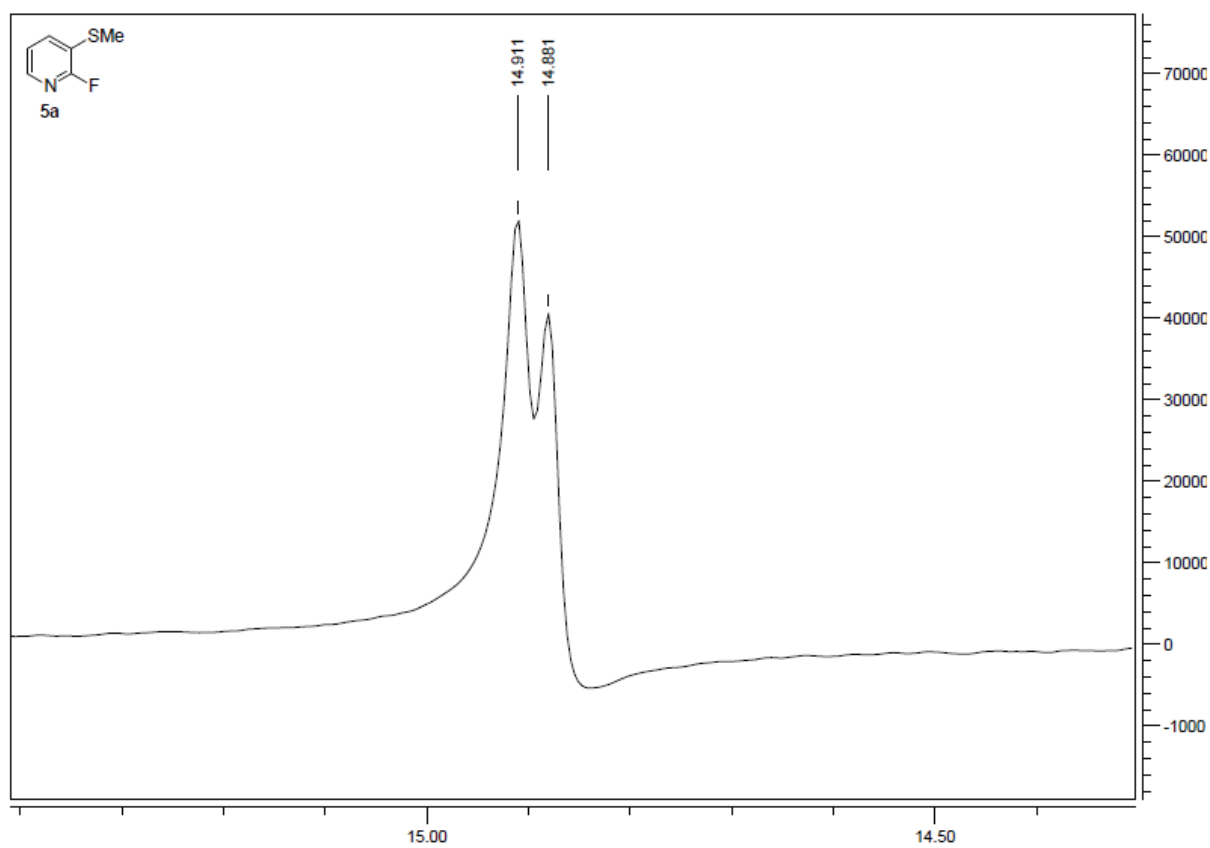


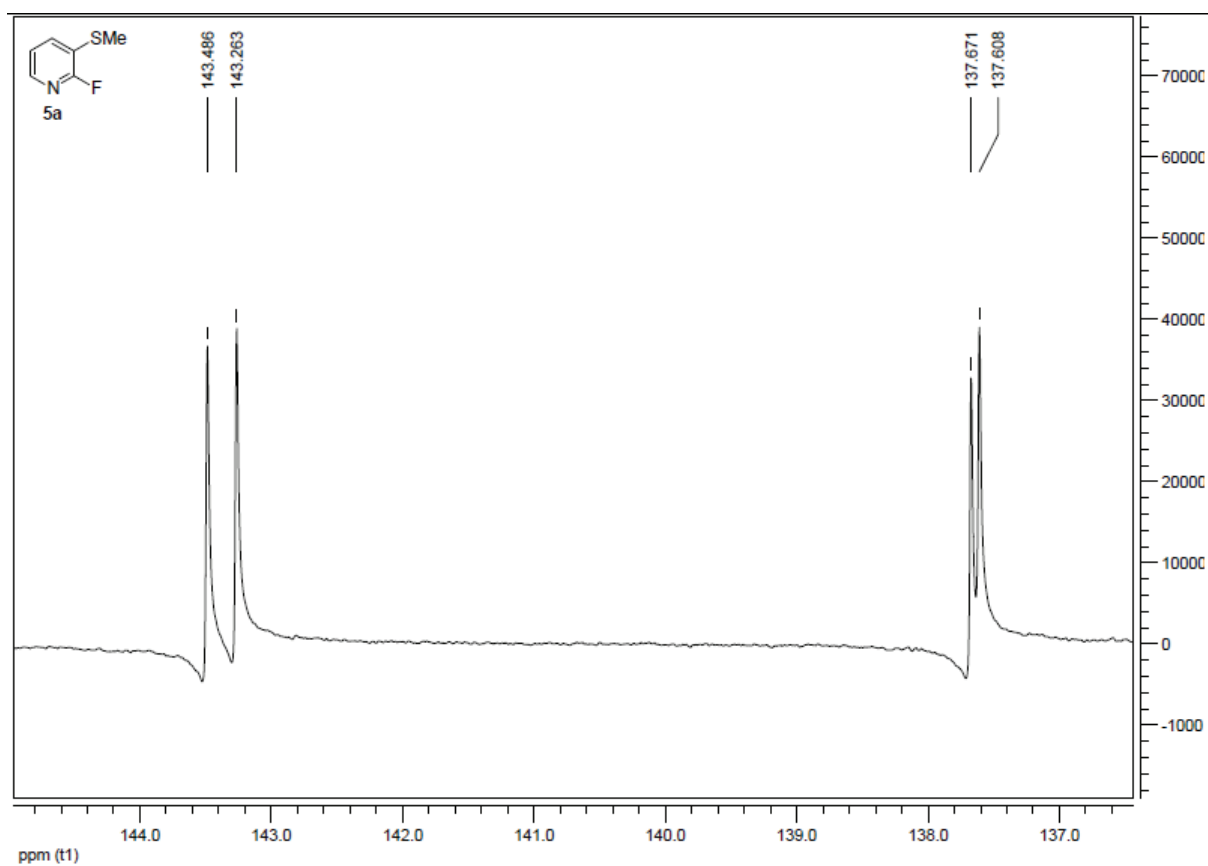


GC, ^1H and ^{13}C for 5a.

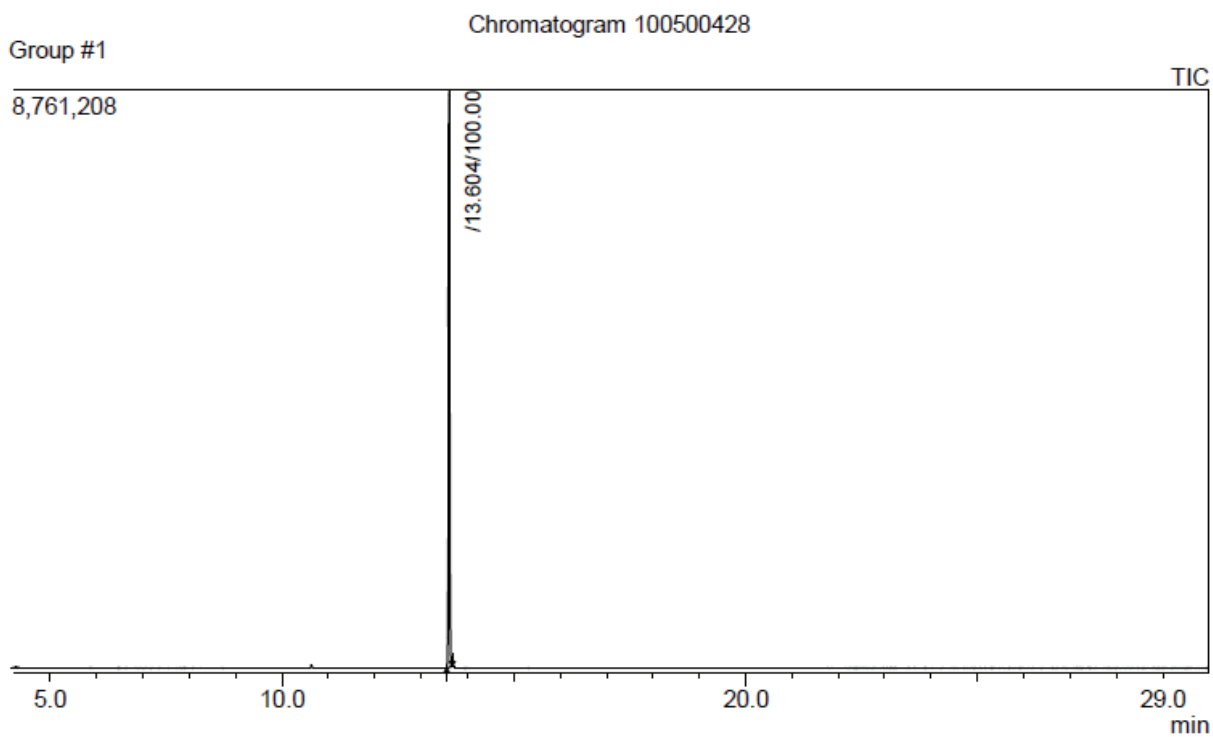


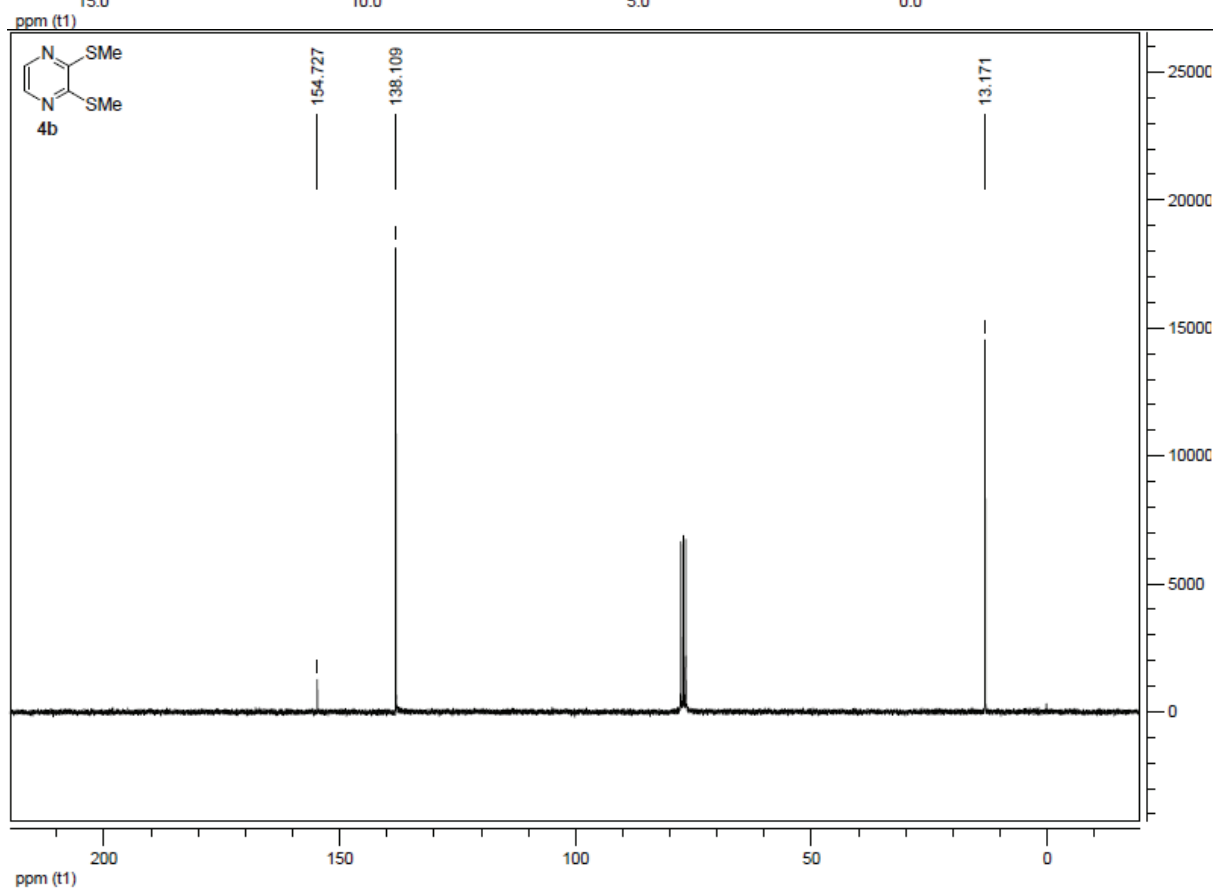
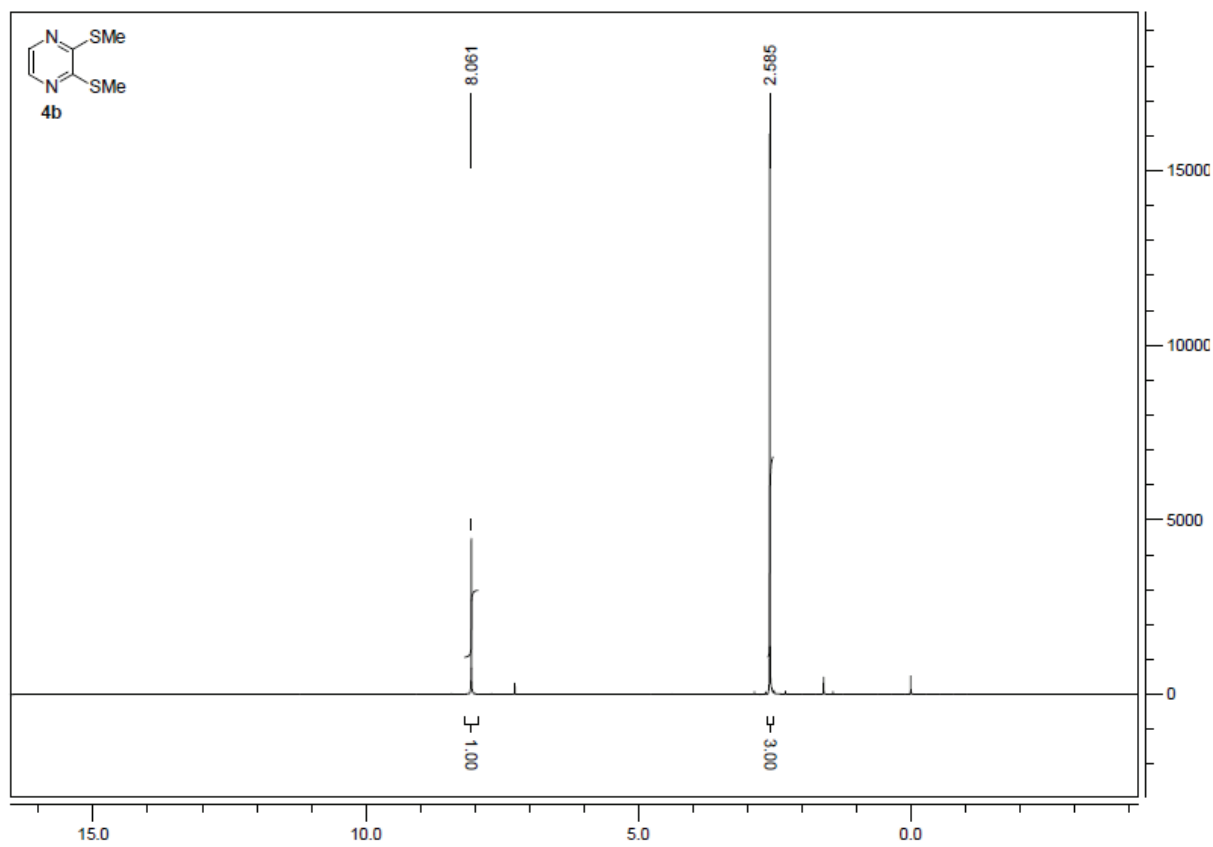




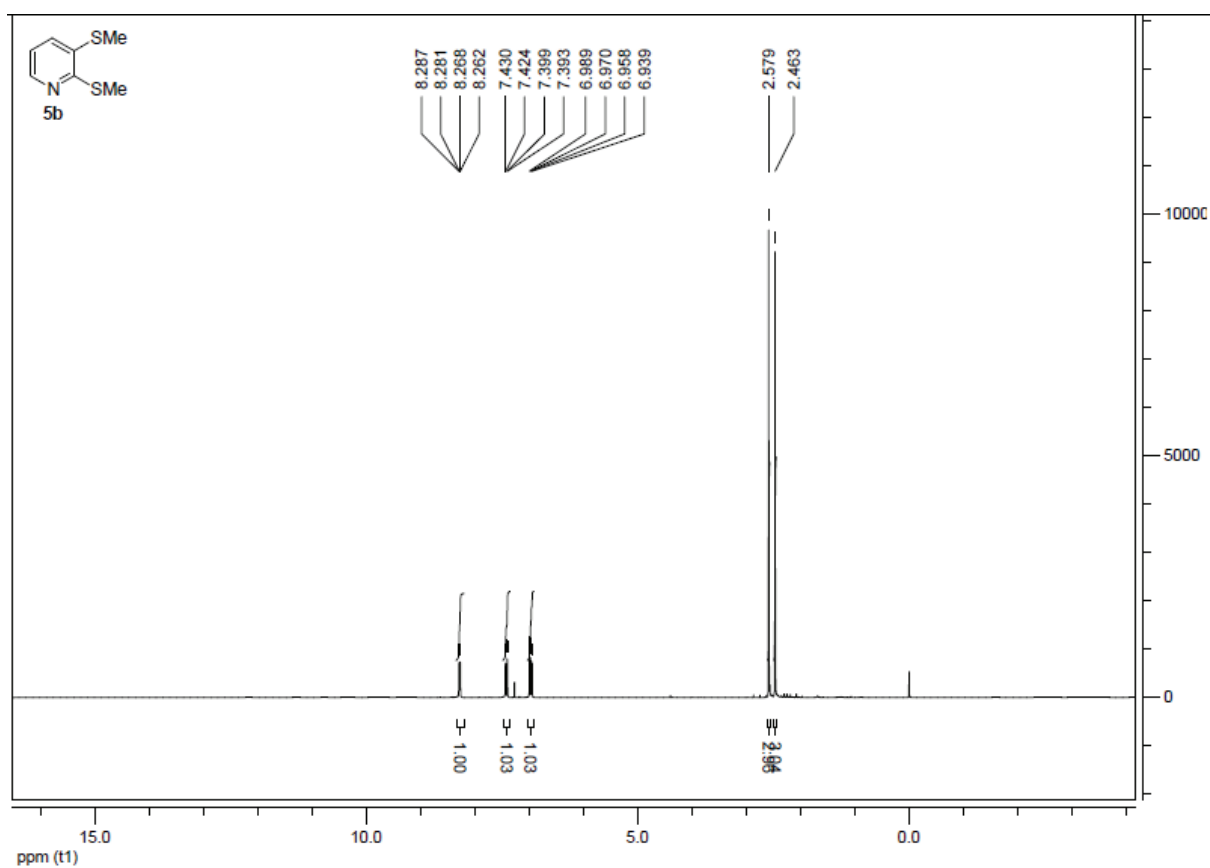
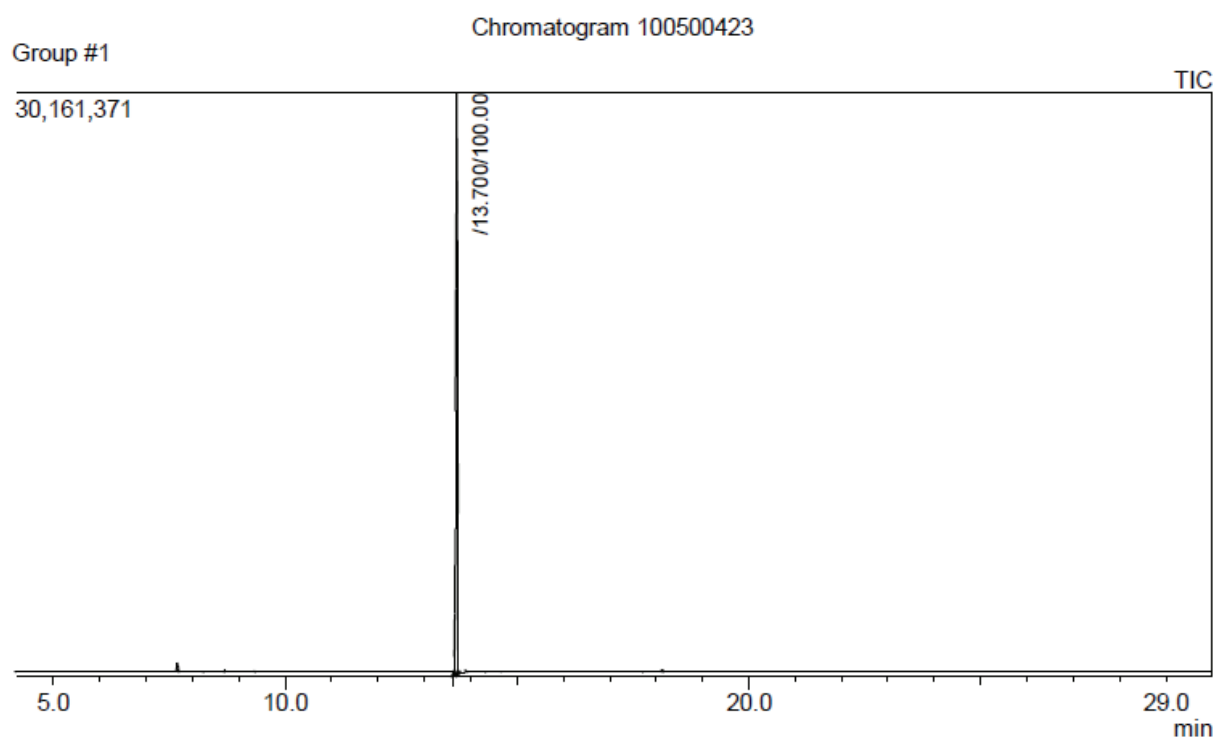


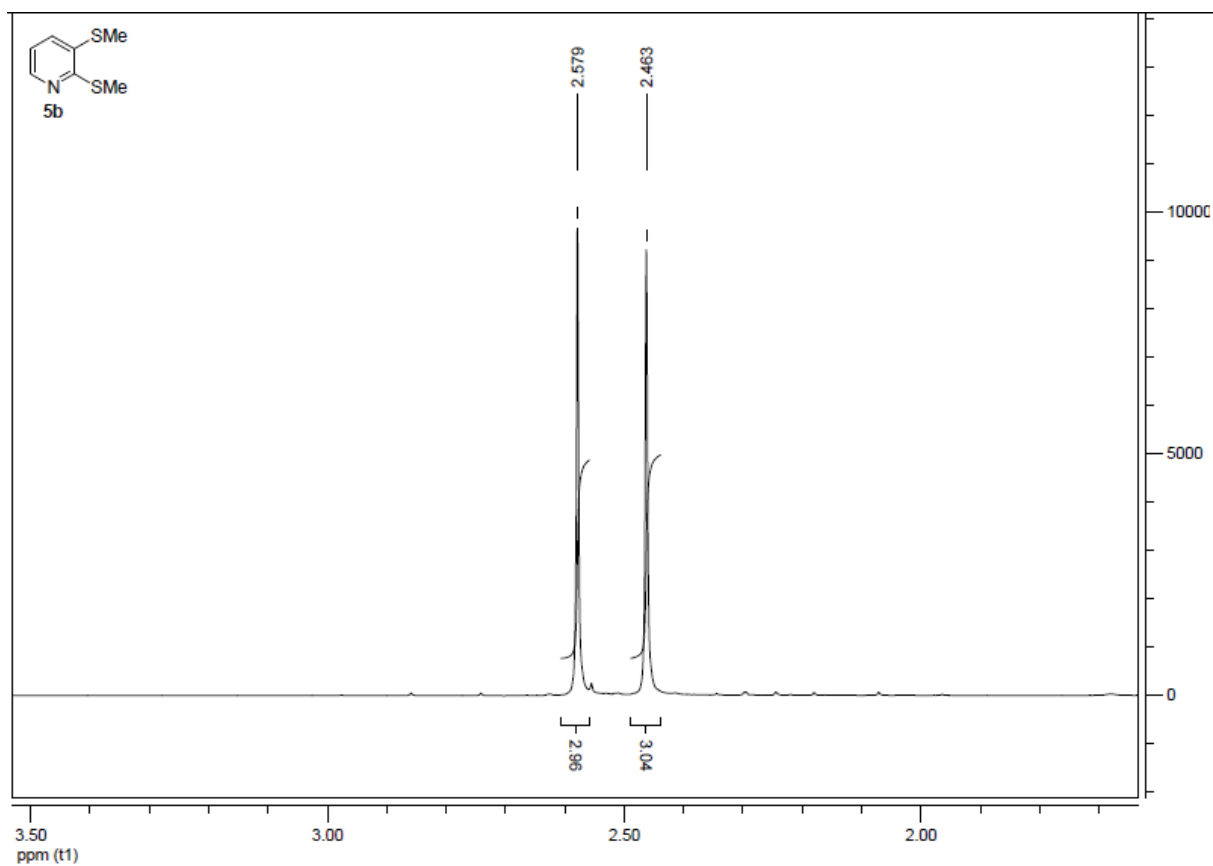
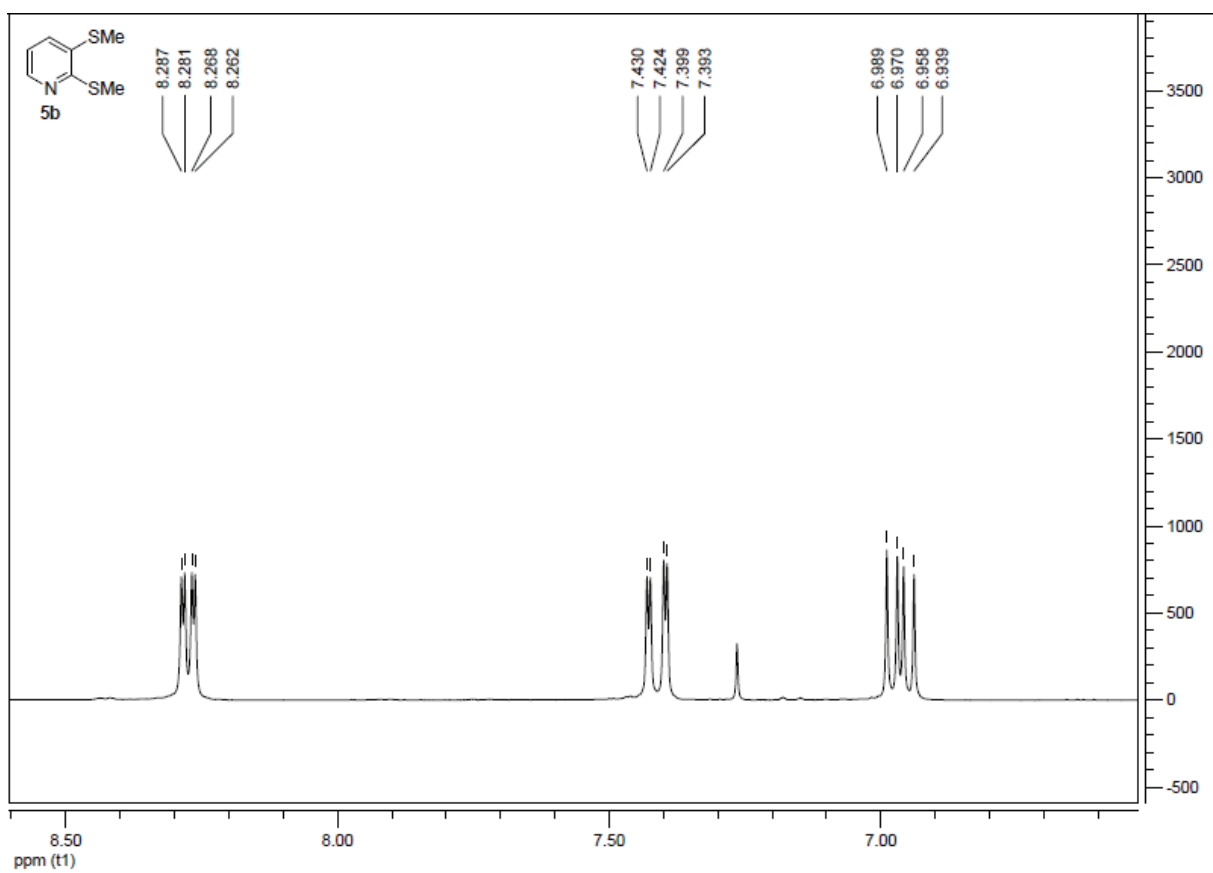
GC, ^1H and ^{13}C for 4b.

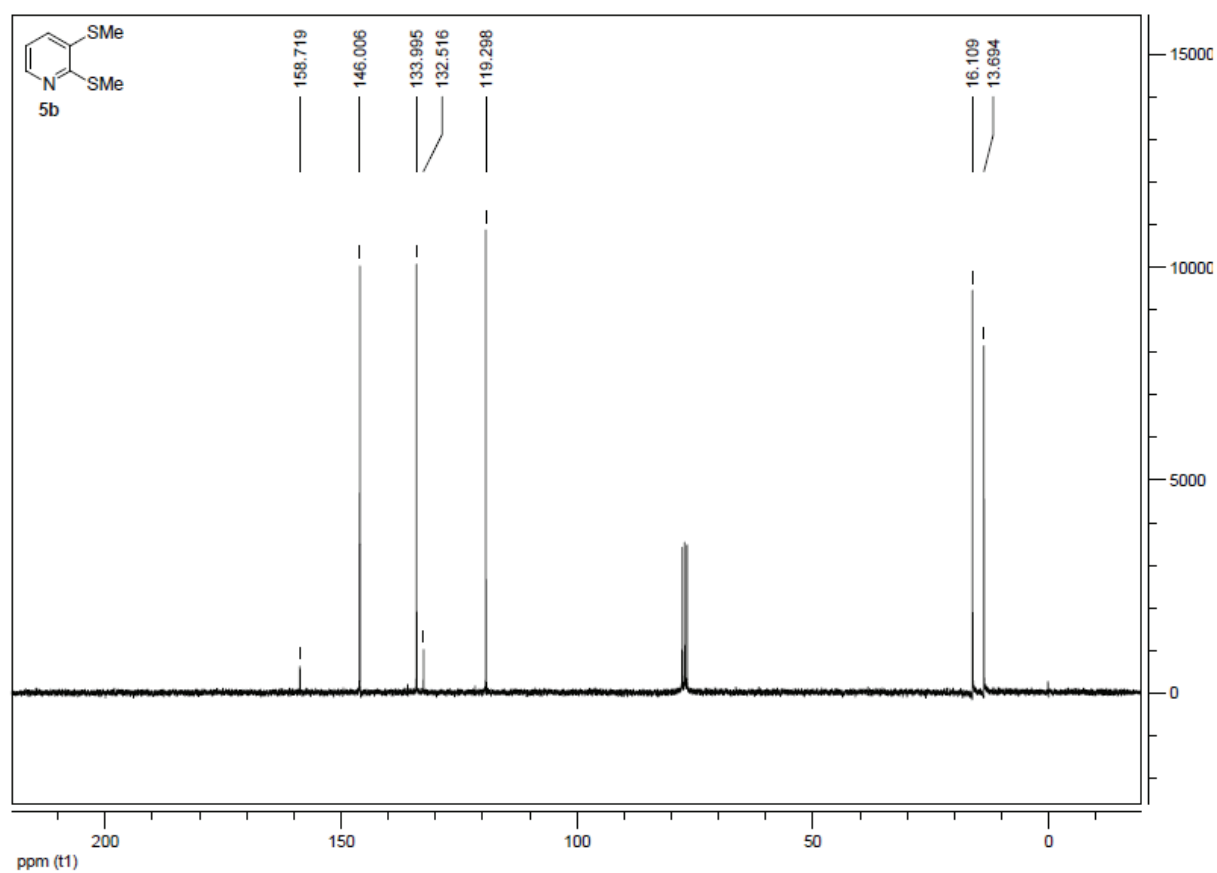




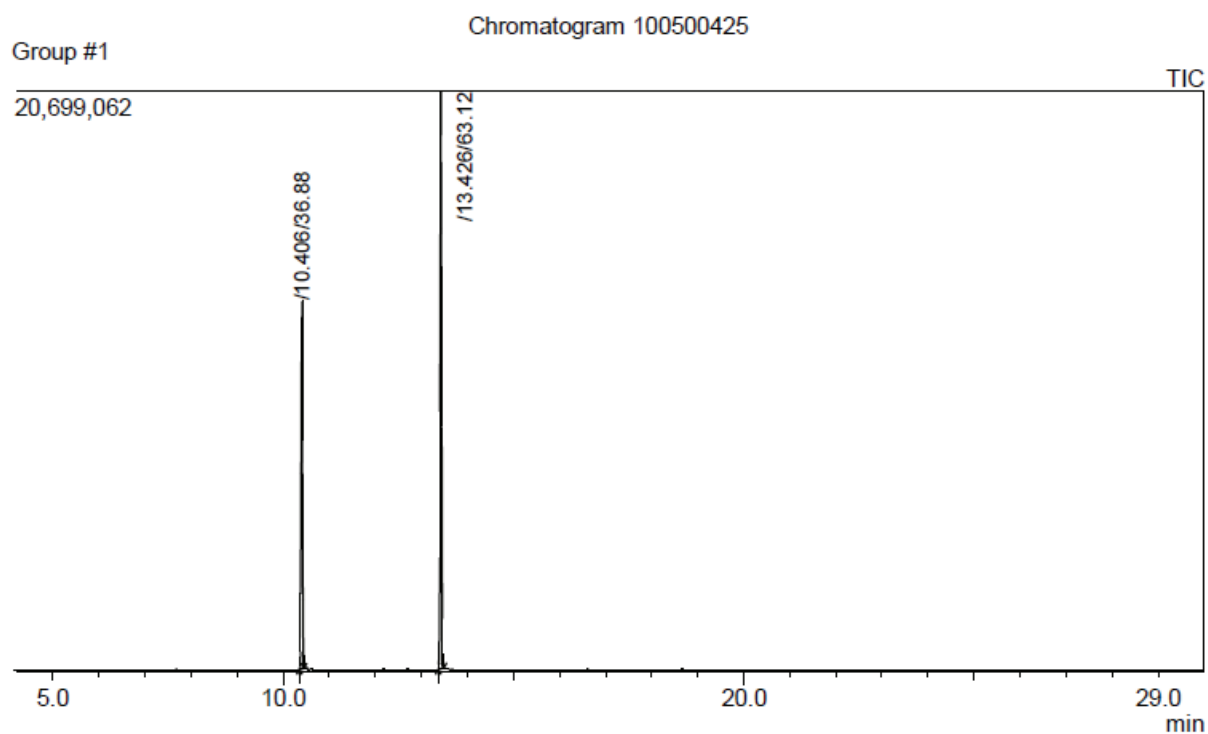
GC, ^1H and ^{13}C for 5b.

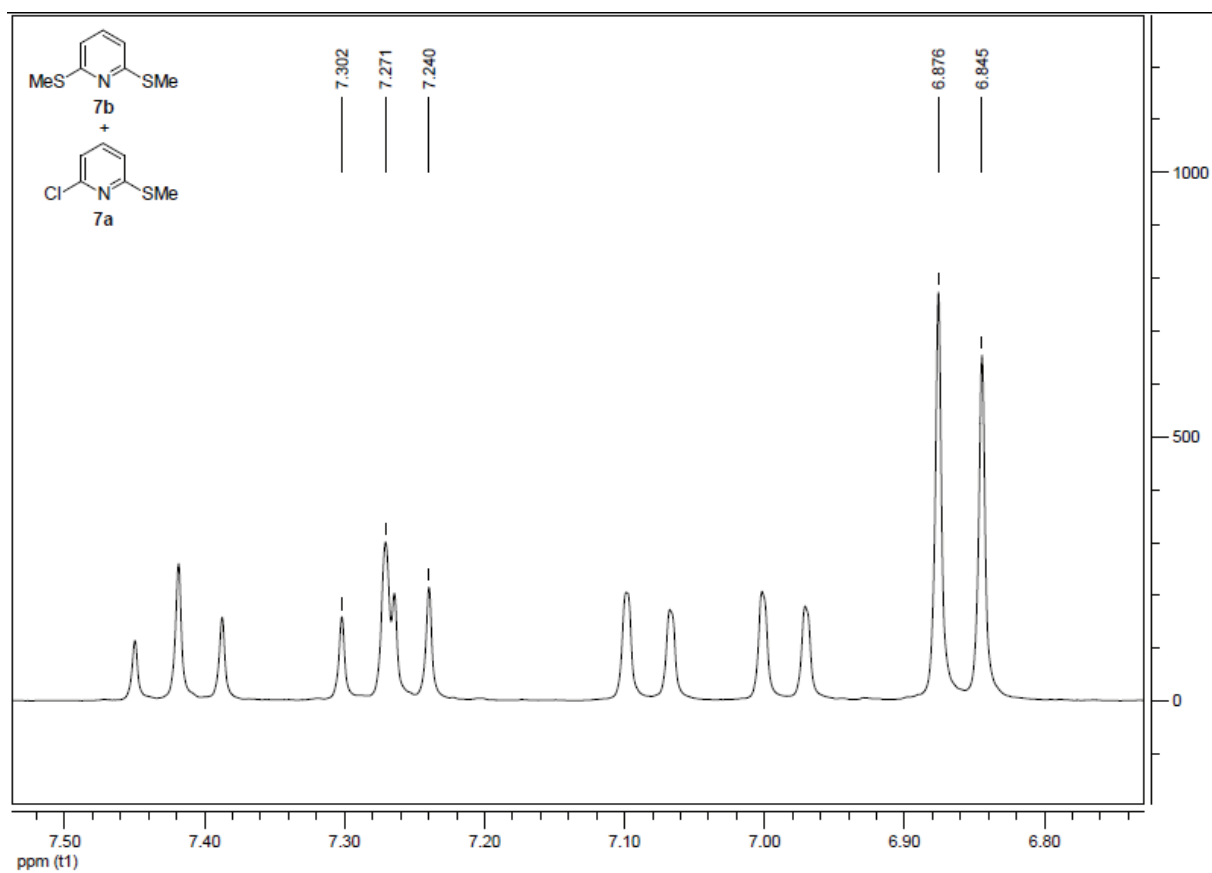
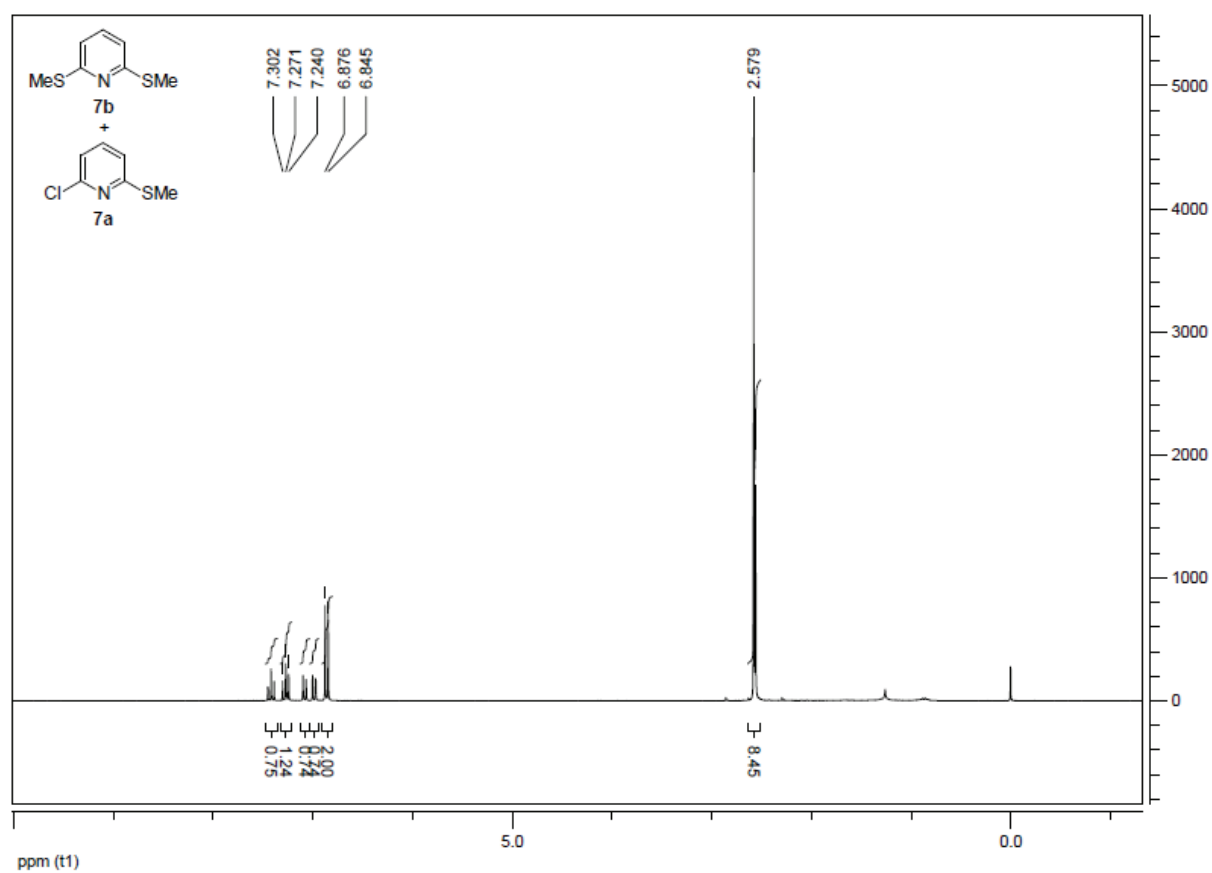


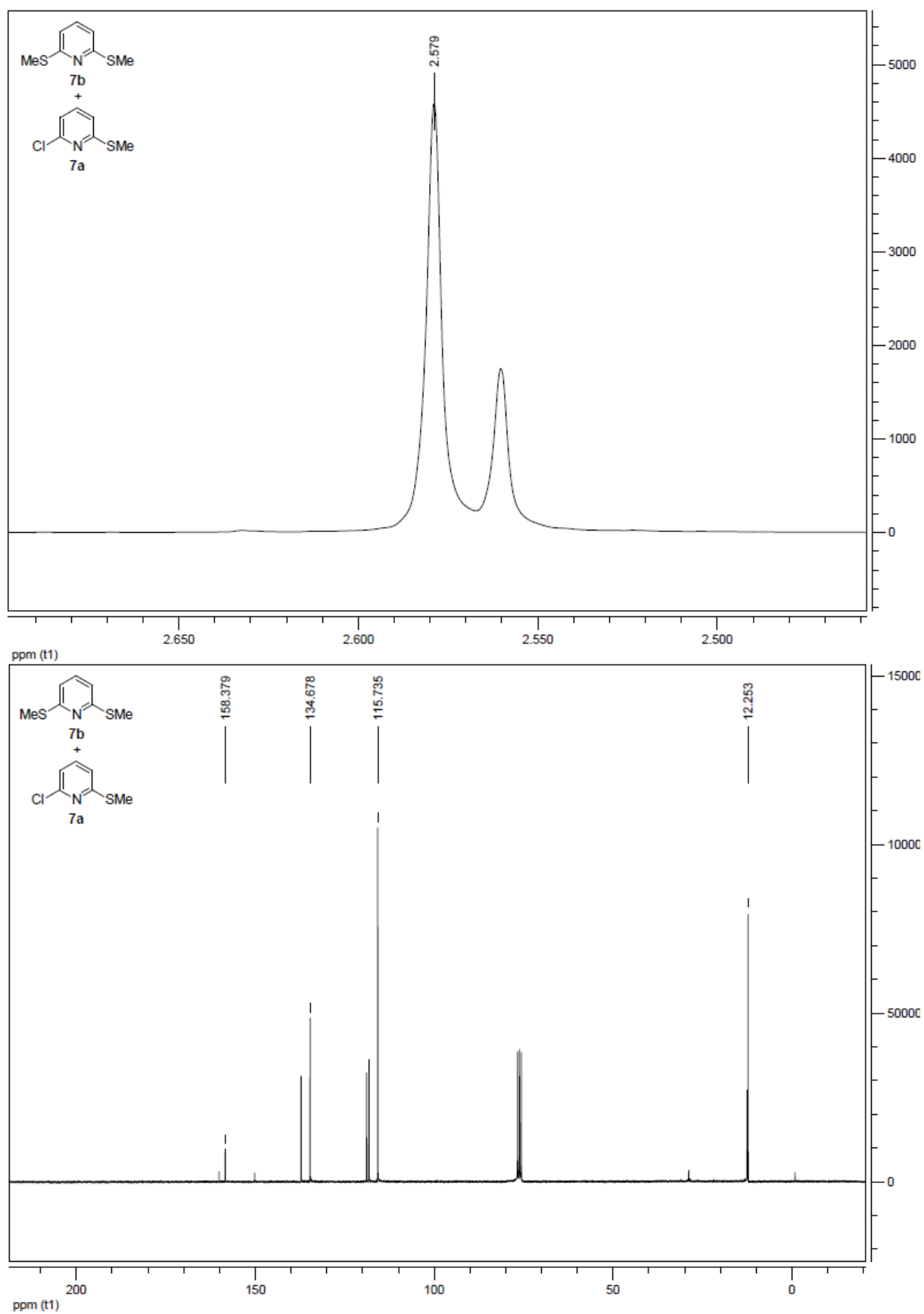




GC, ¹H and ¹³C for 7b (+7a).

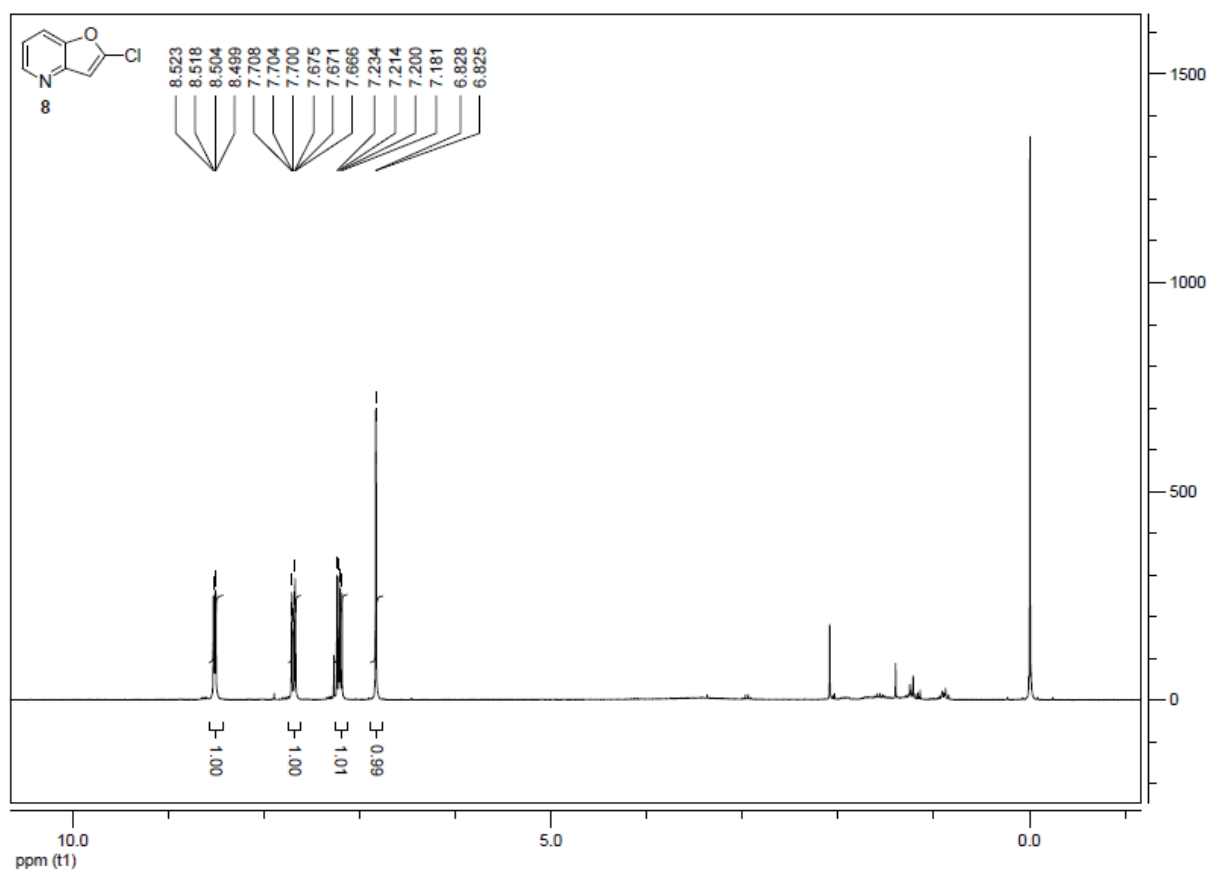
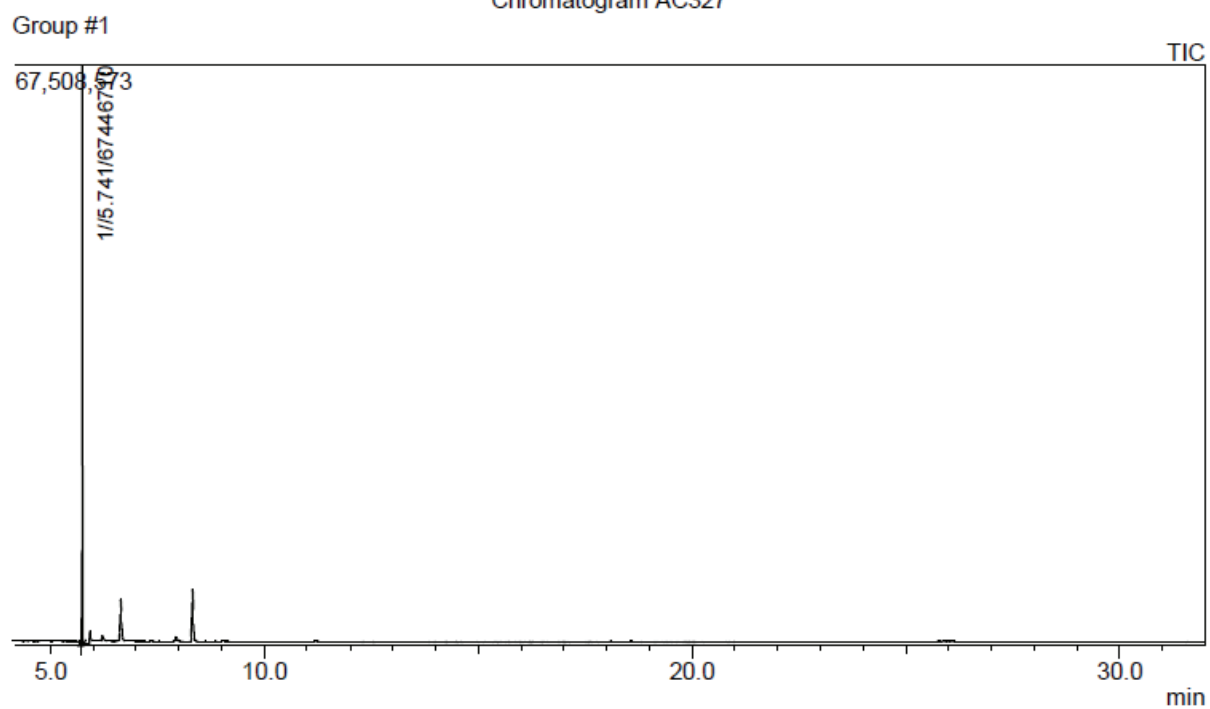


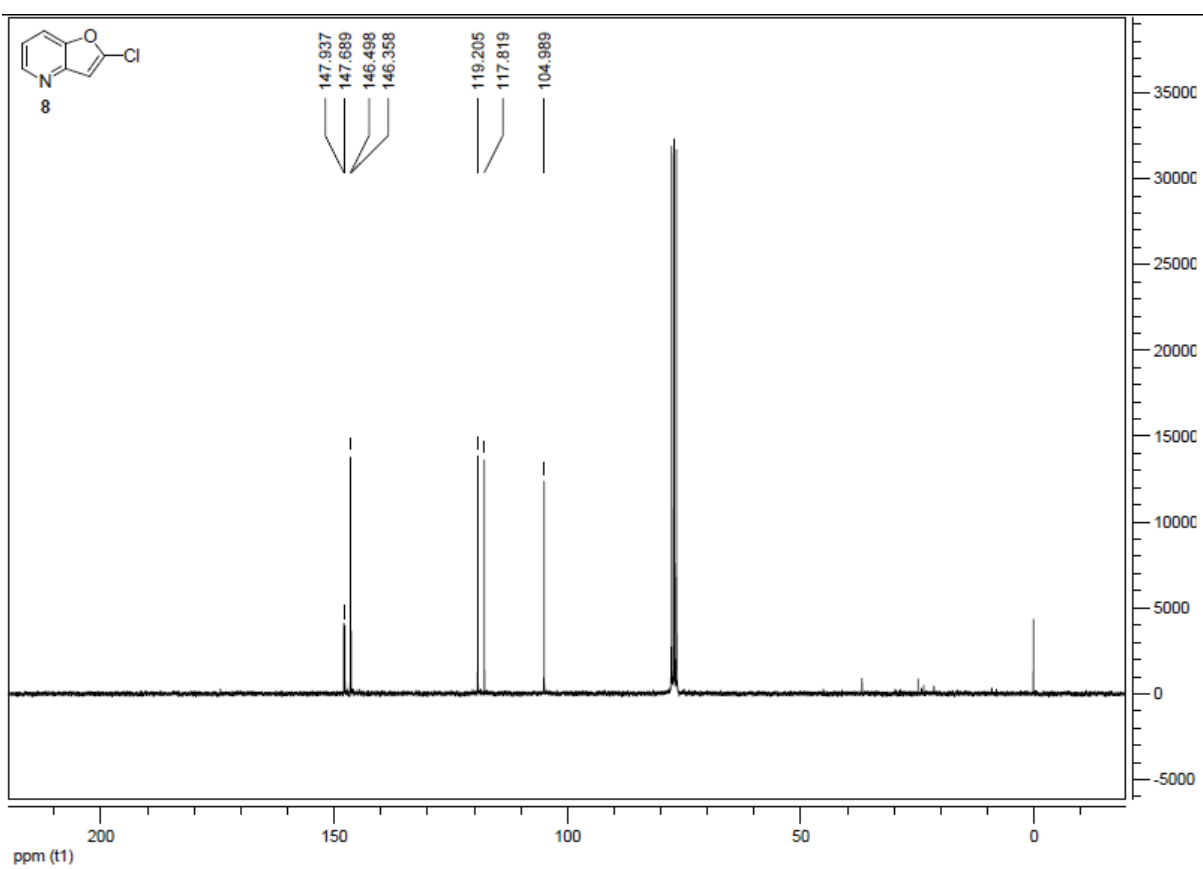
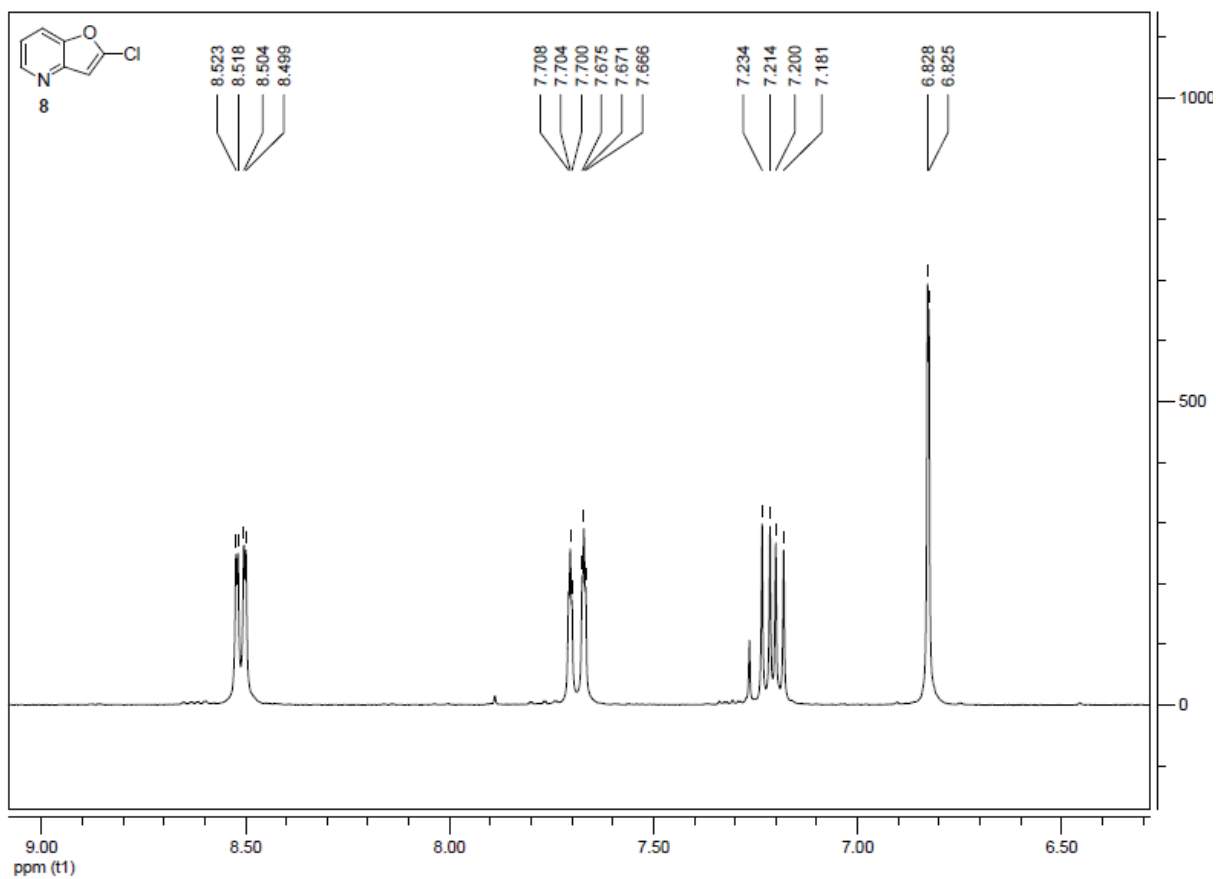


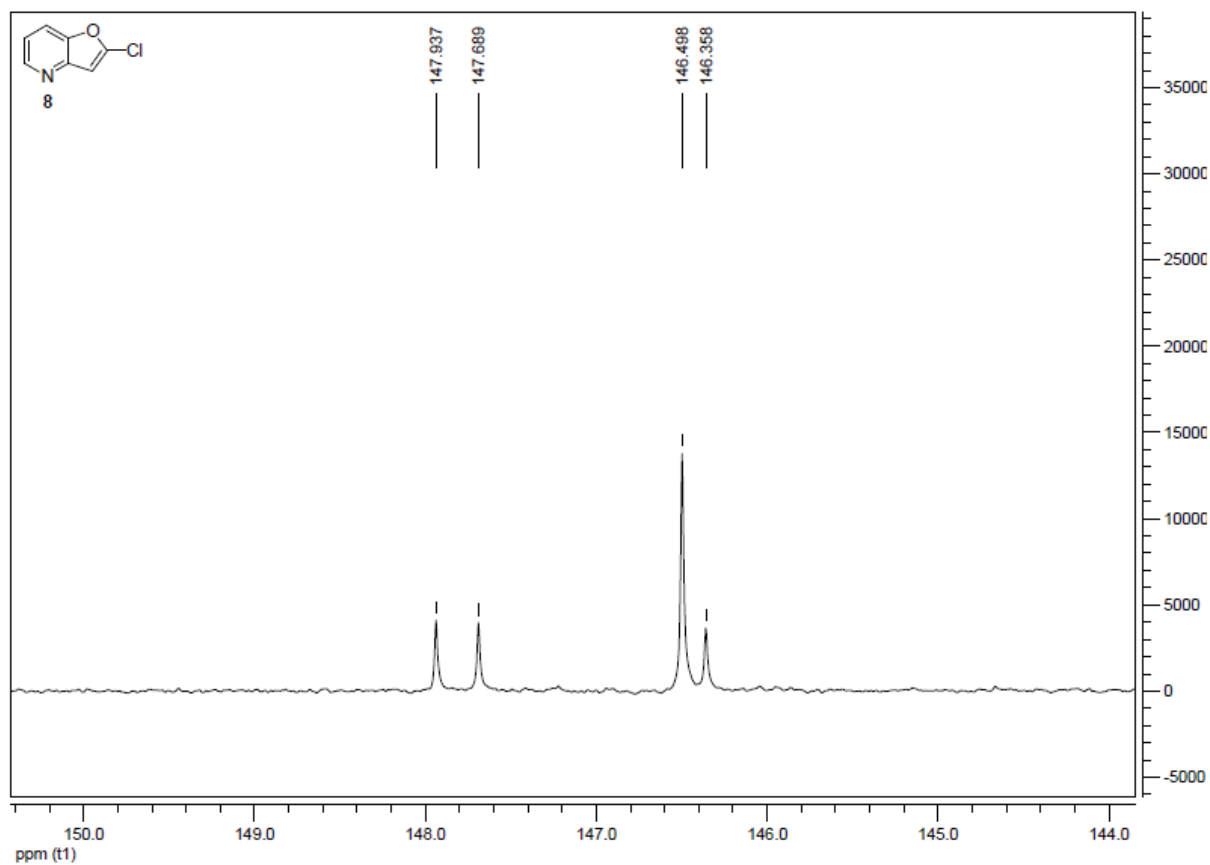


GC, ^1H and ^{13}C for 8.

Chromatogram AC327



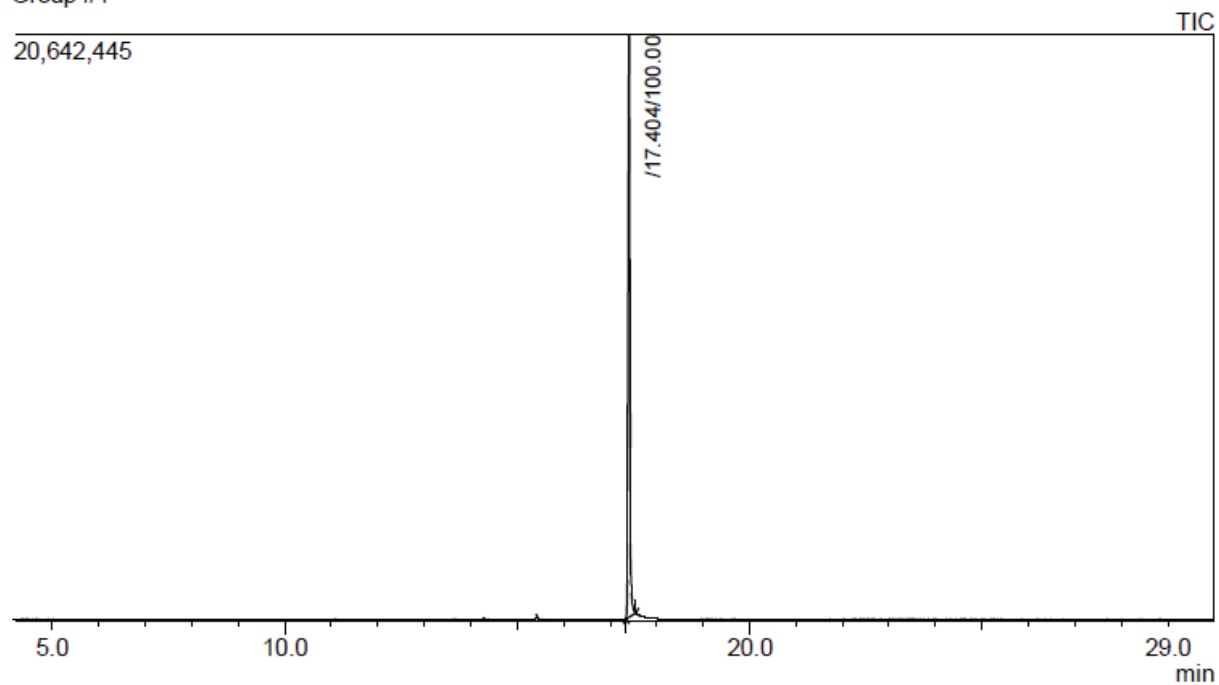


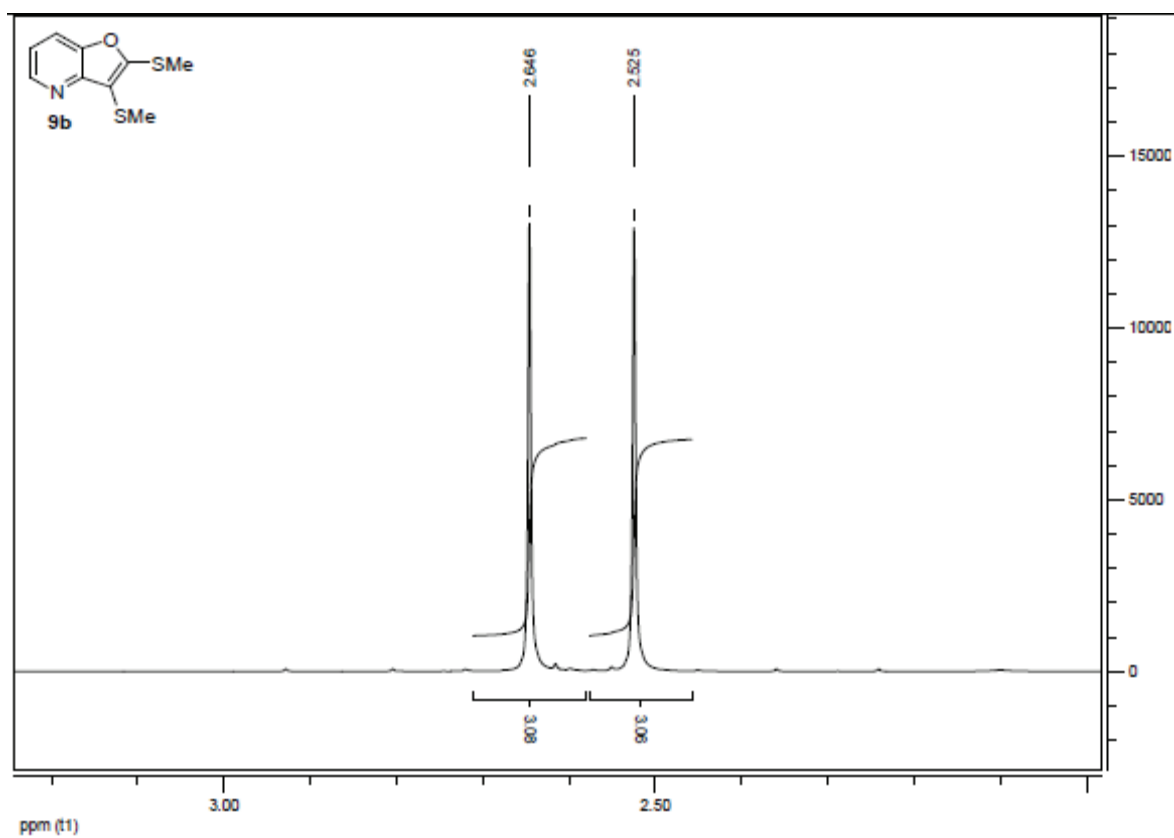
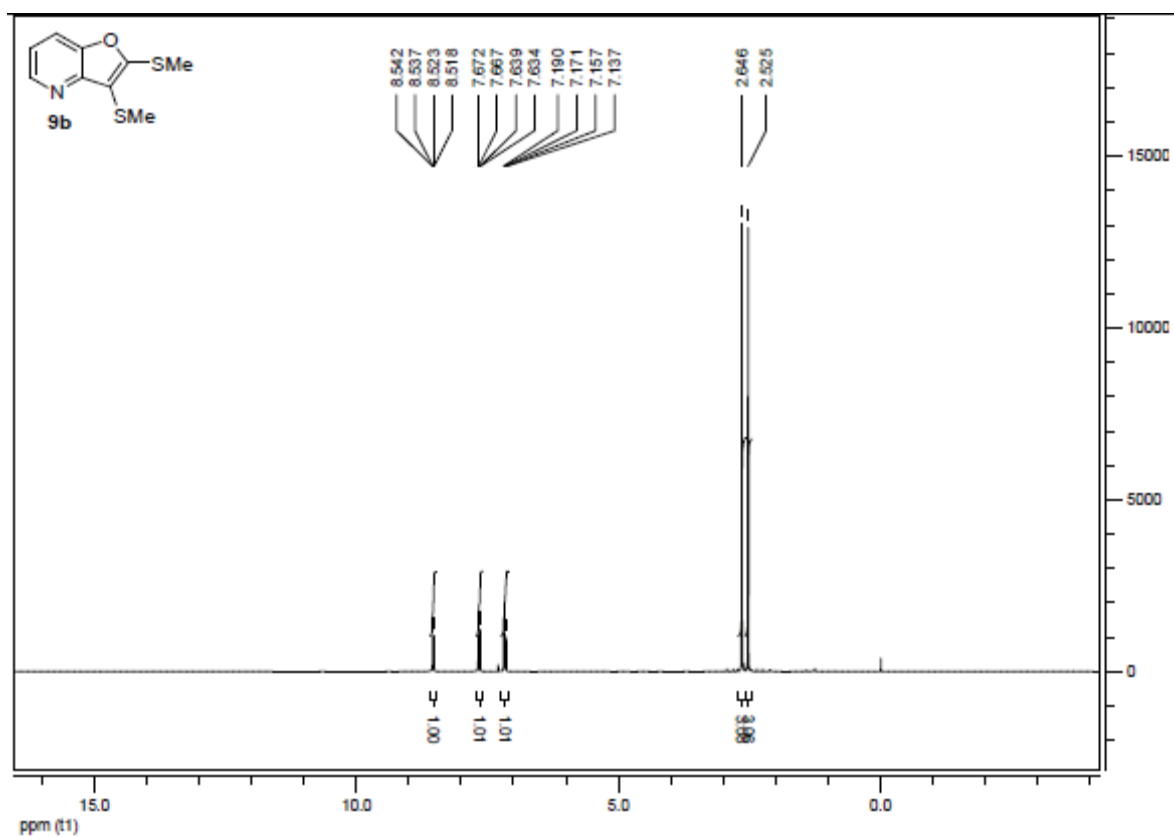


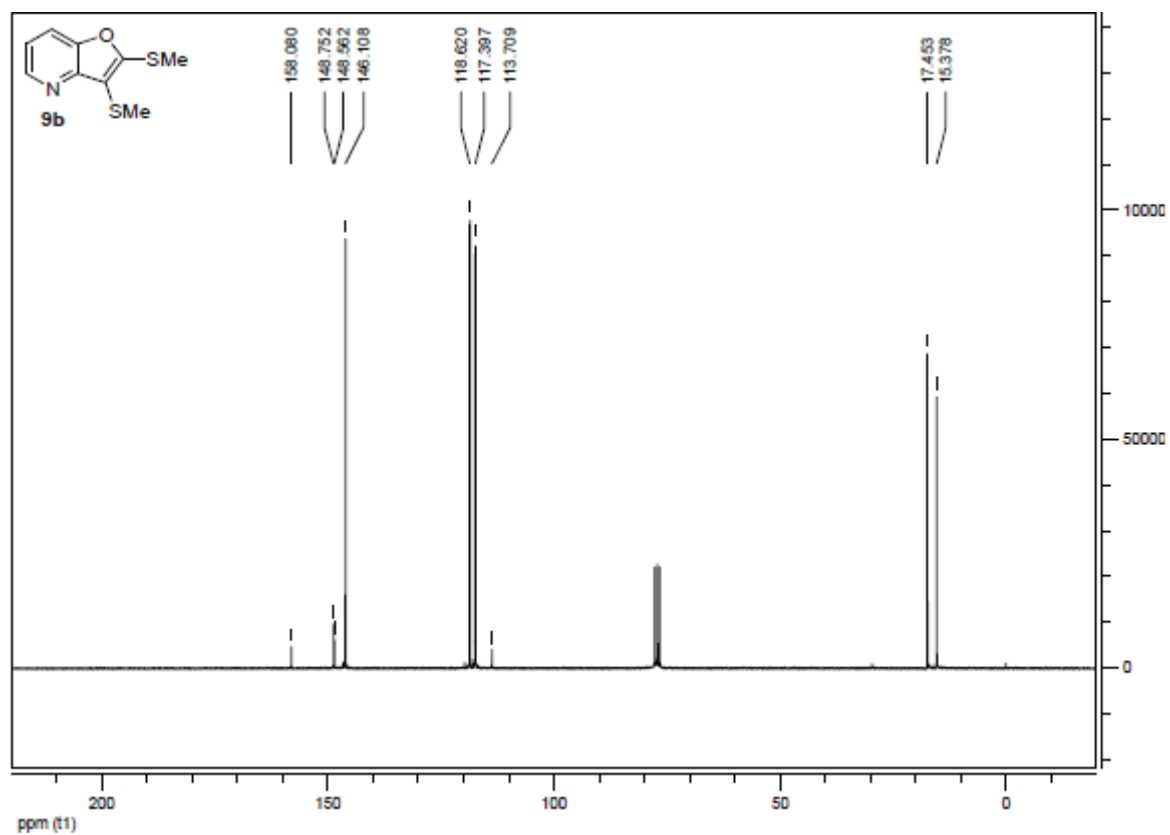
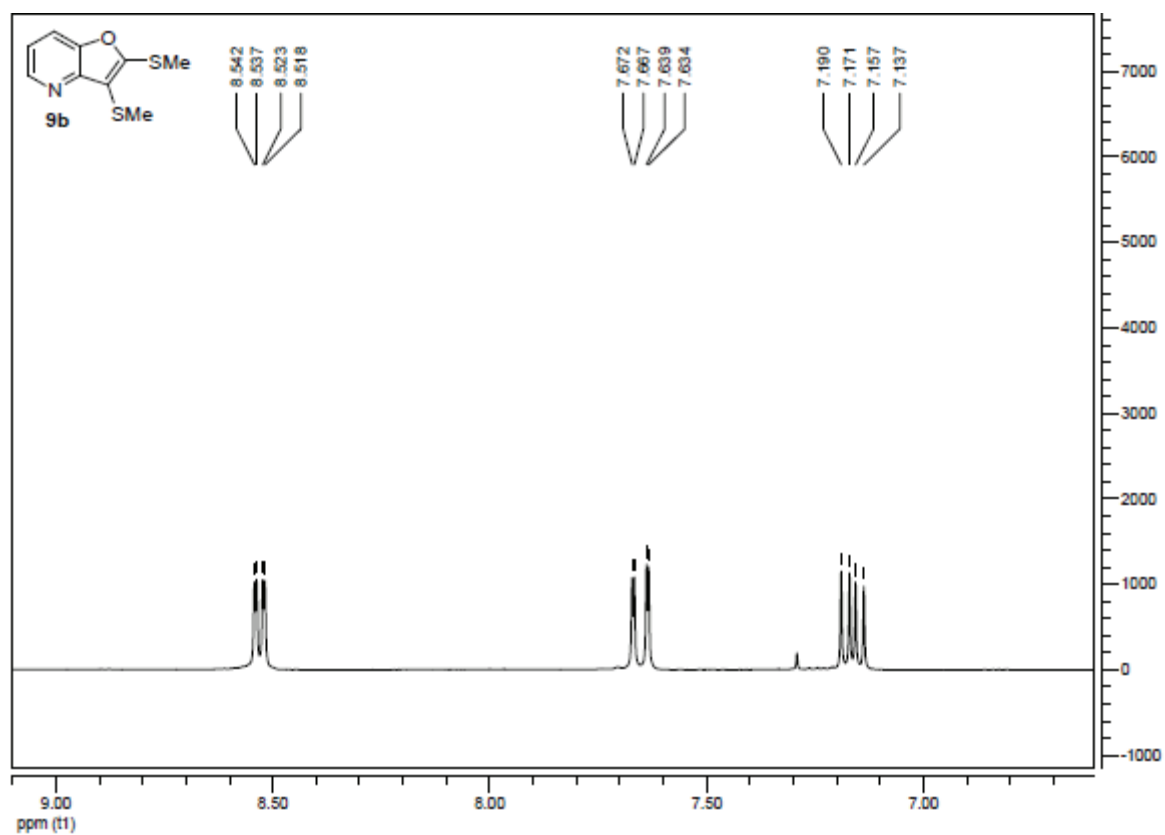
GC, ¹H and ¹³C for 9b.

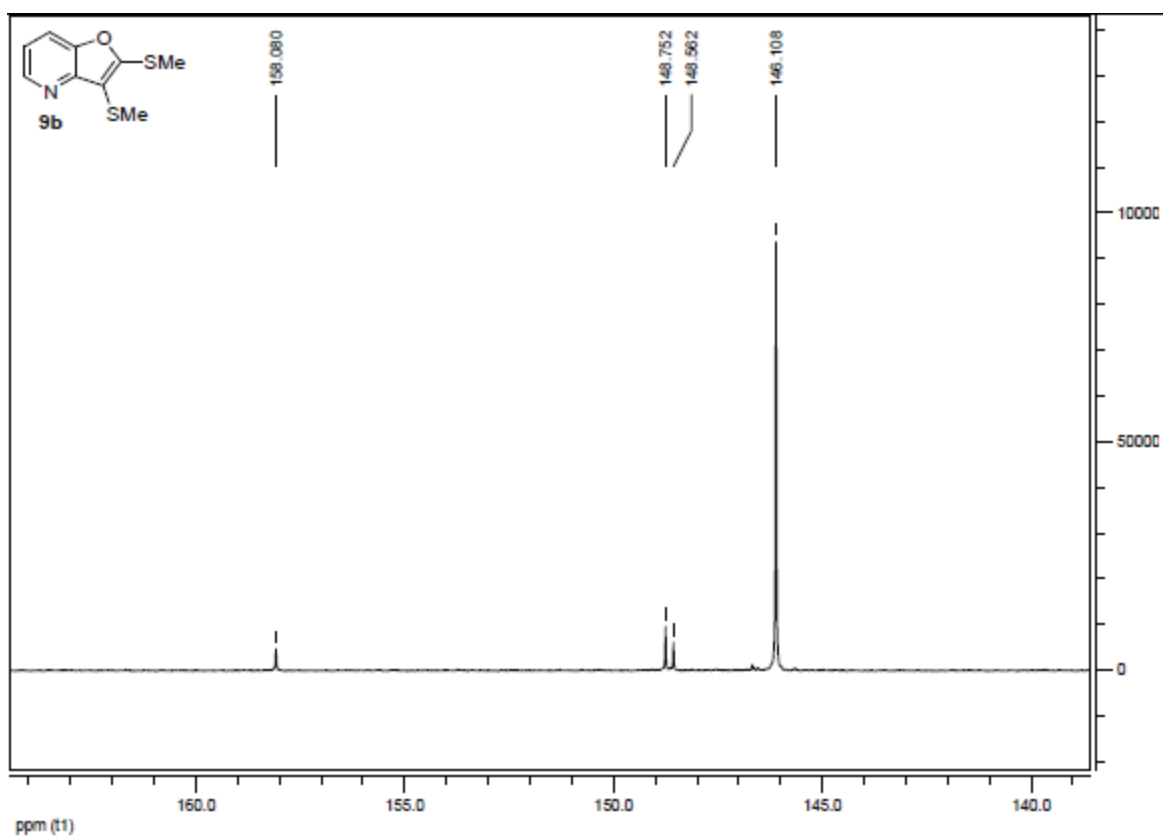
Chromatogram 100500443

Group #1

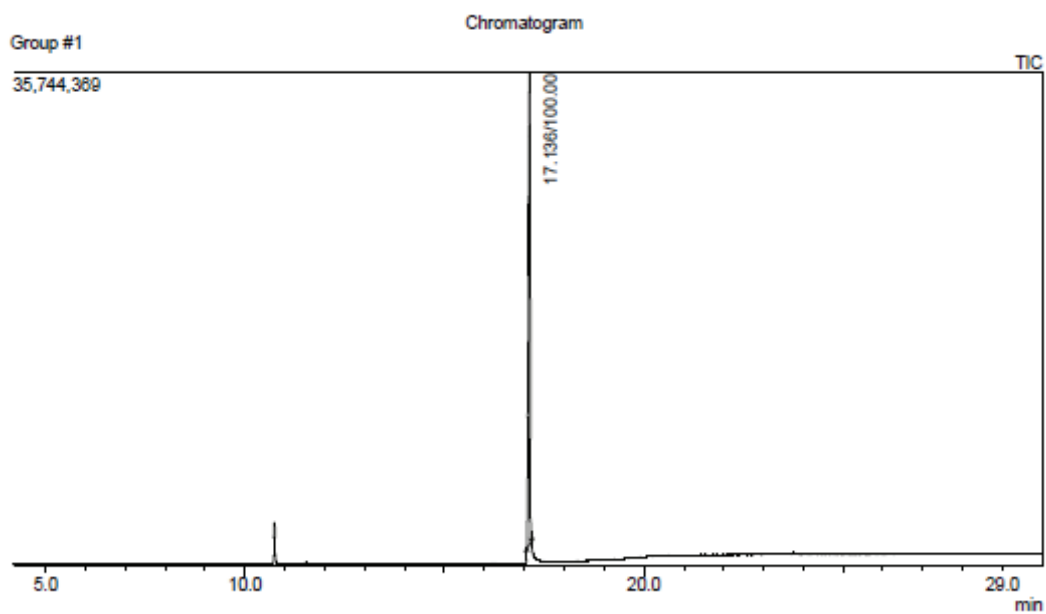


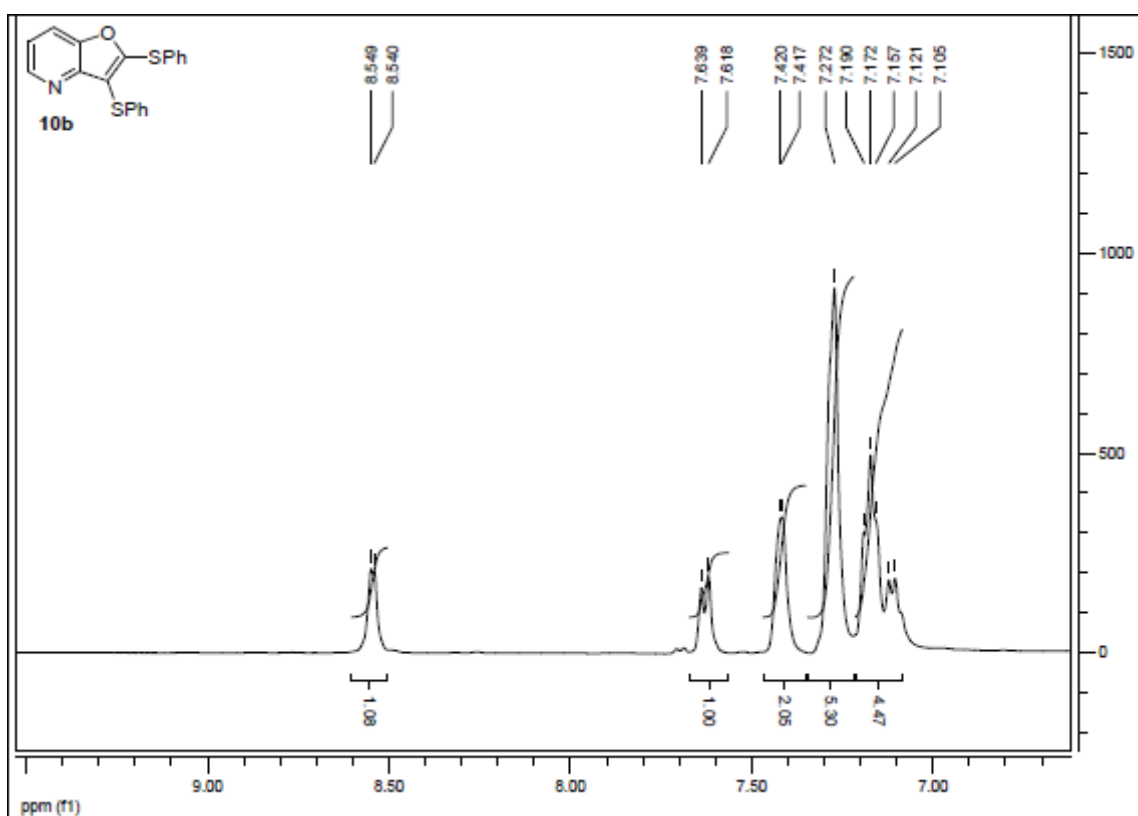
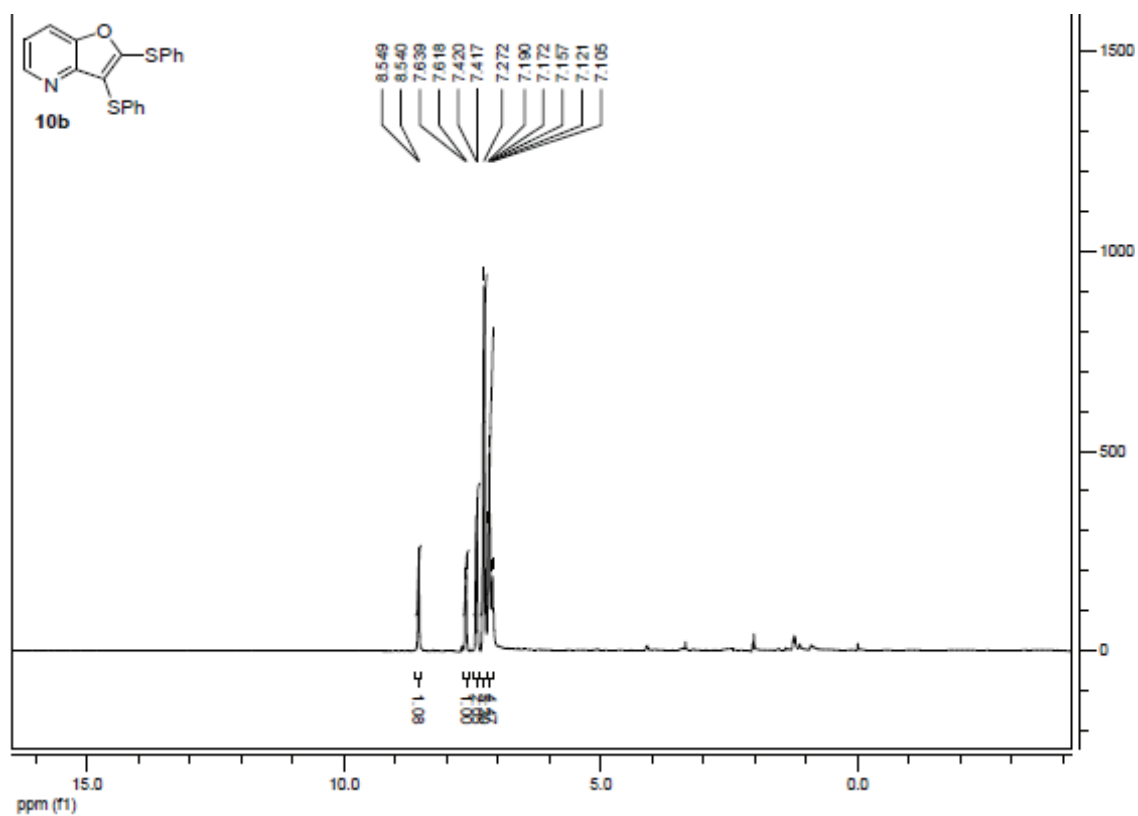


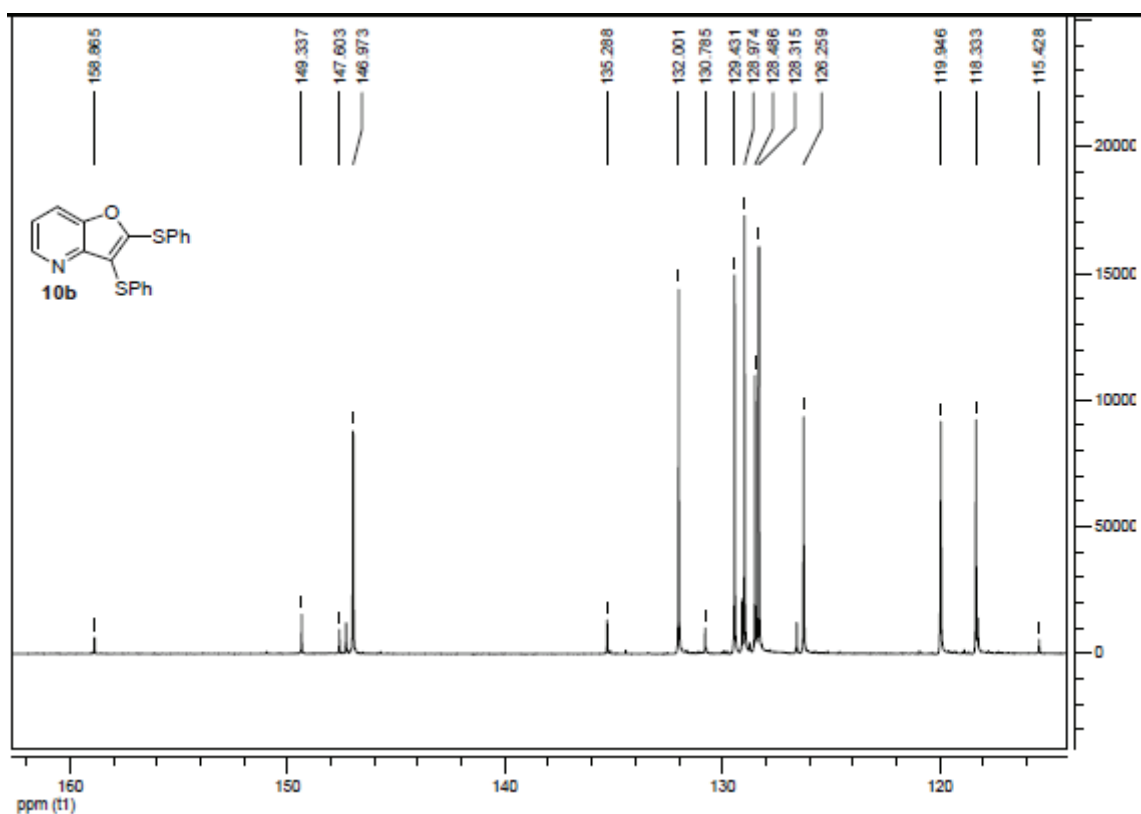
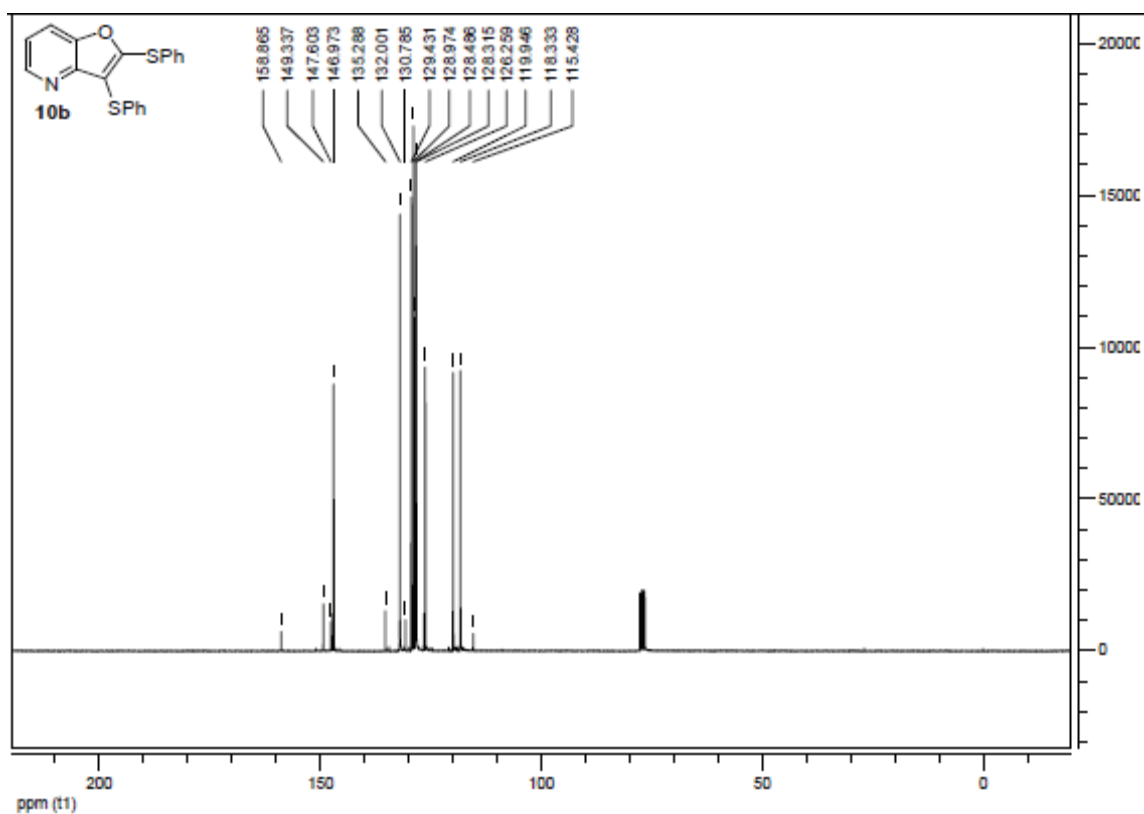




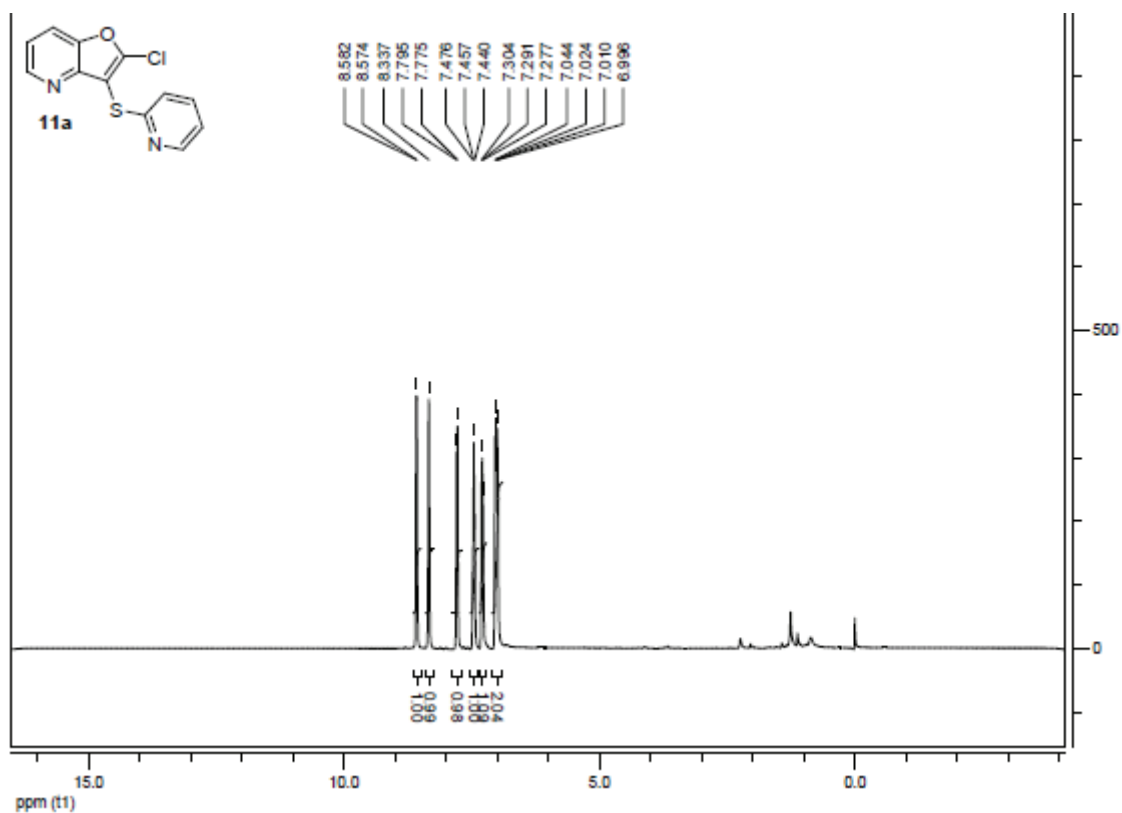
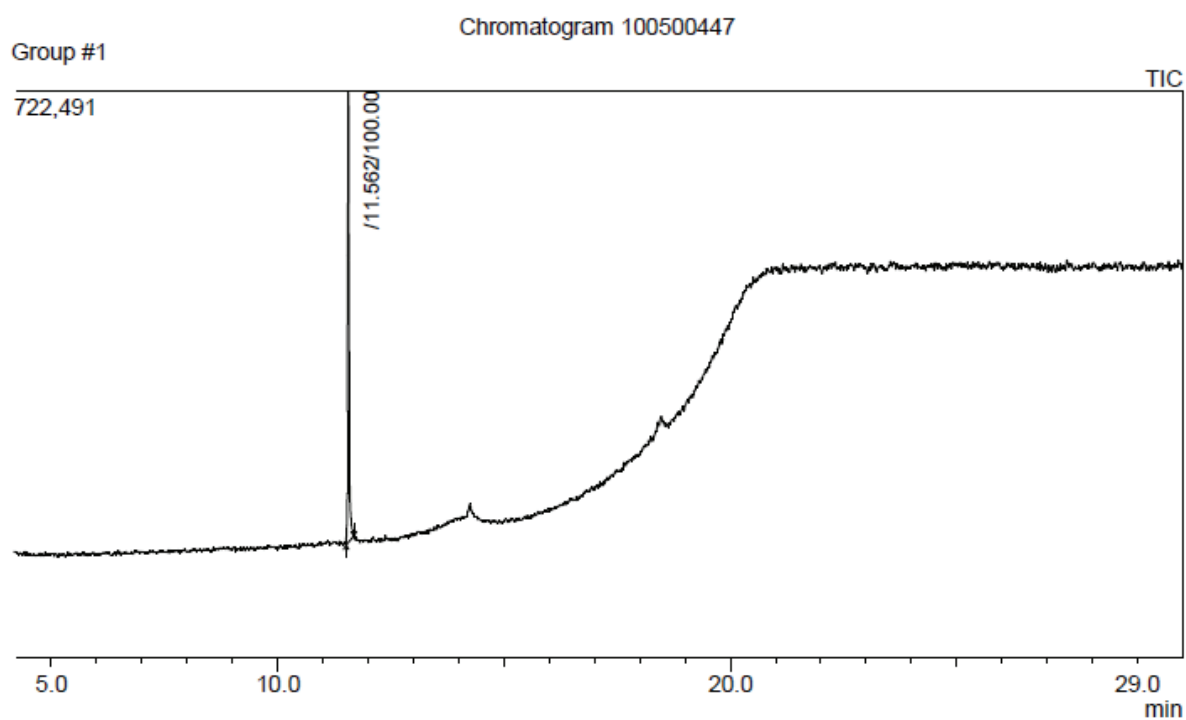
GC, ¹H and ¹³C for 10b.

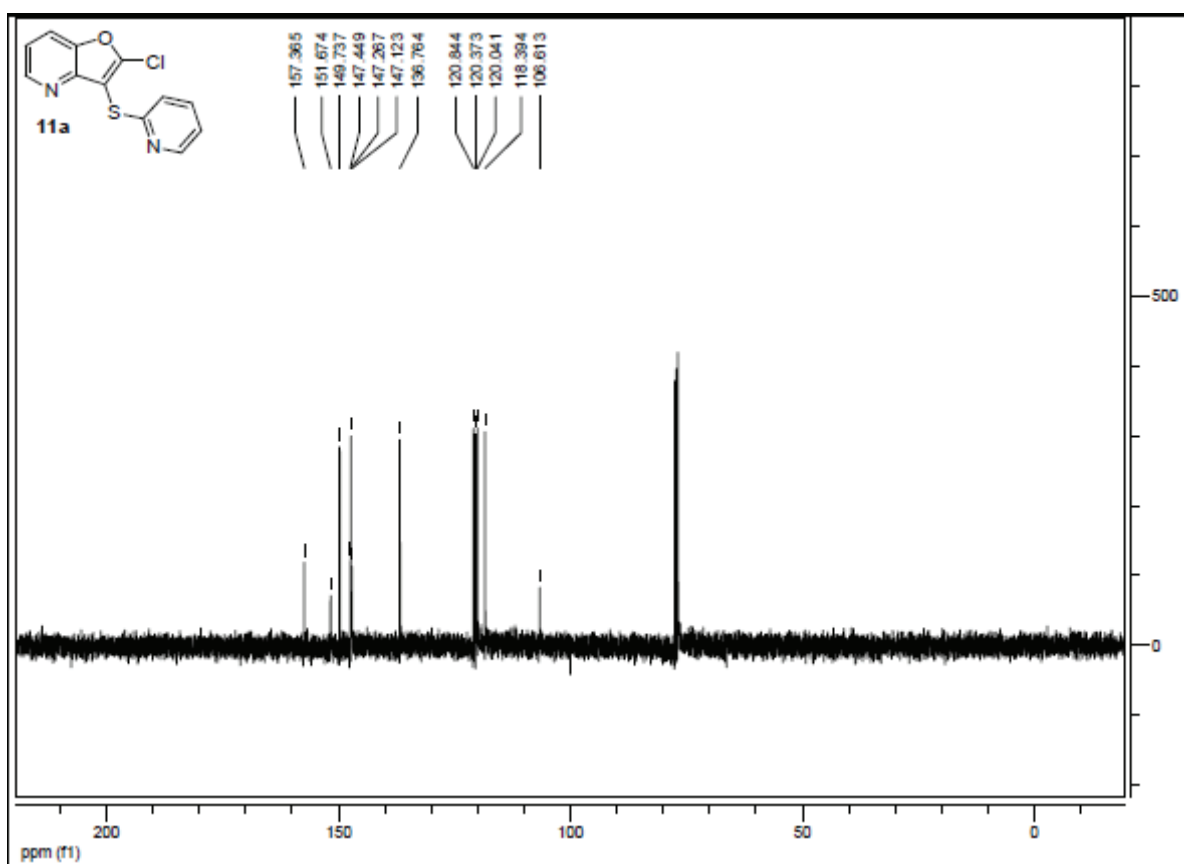
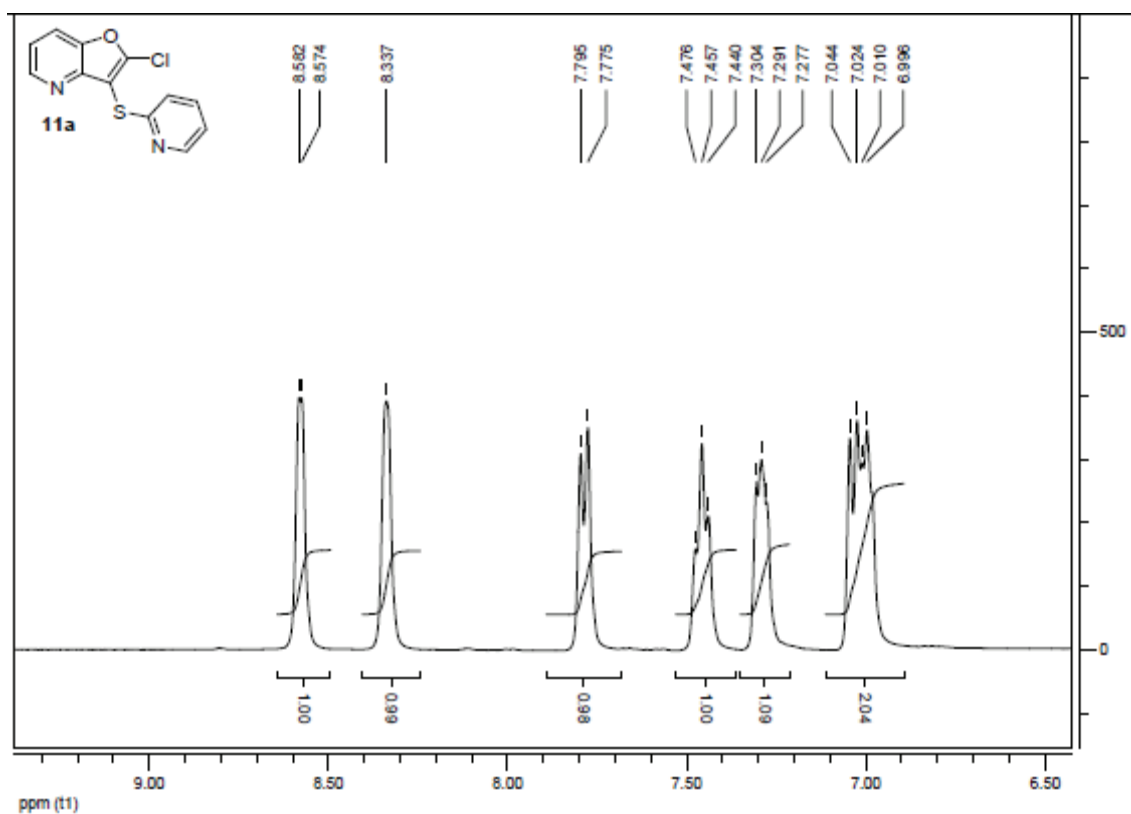


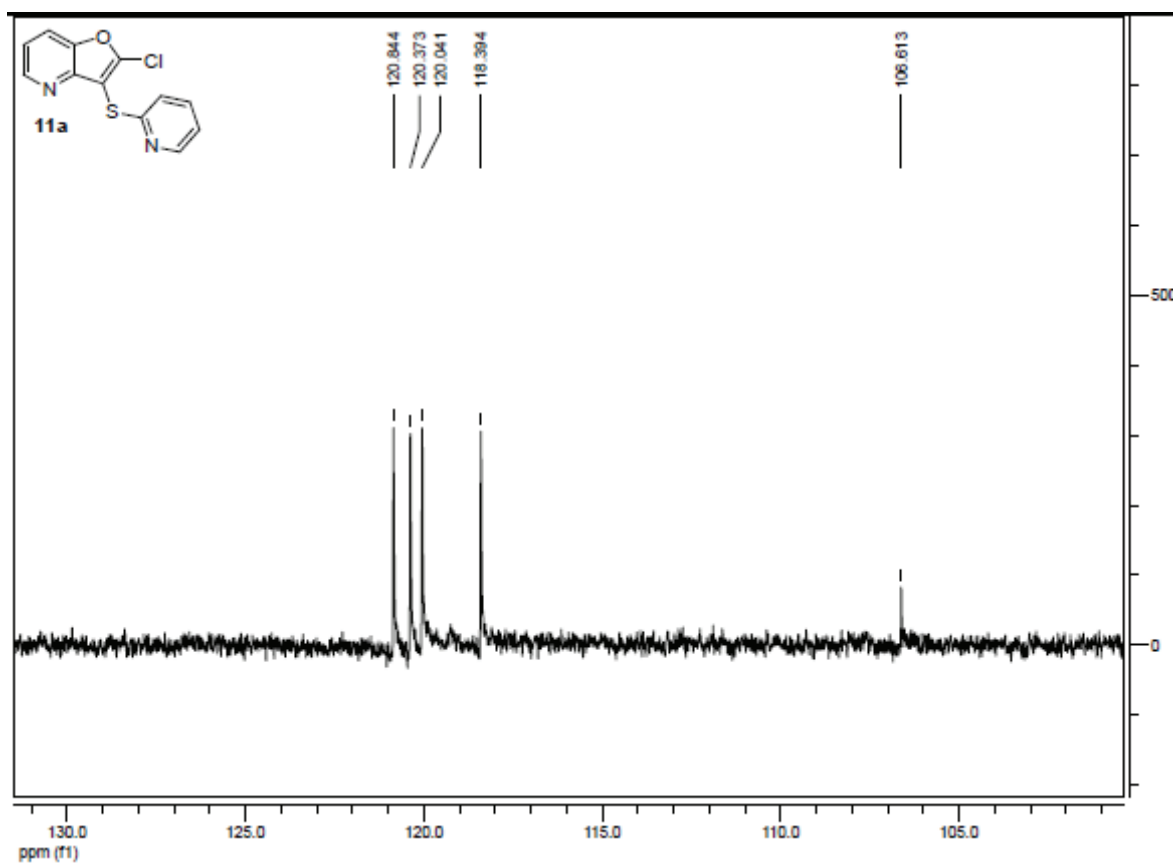
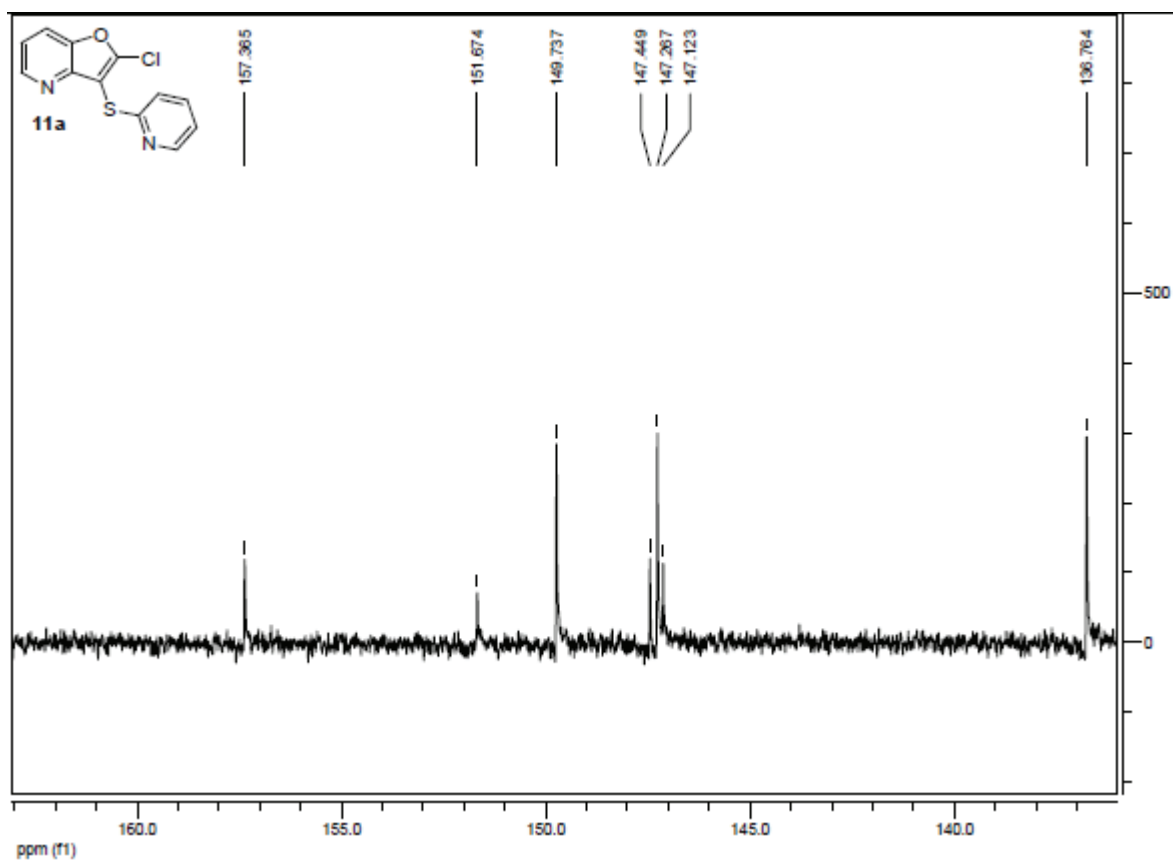


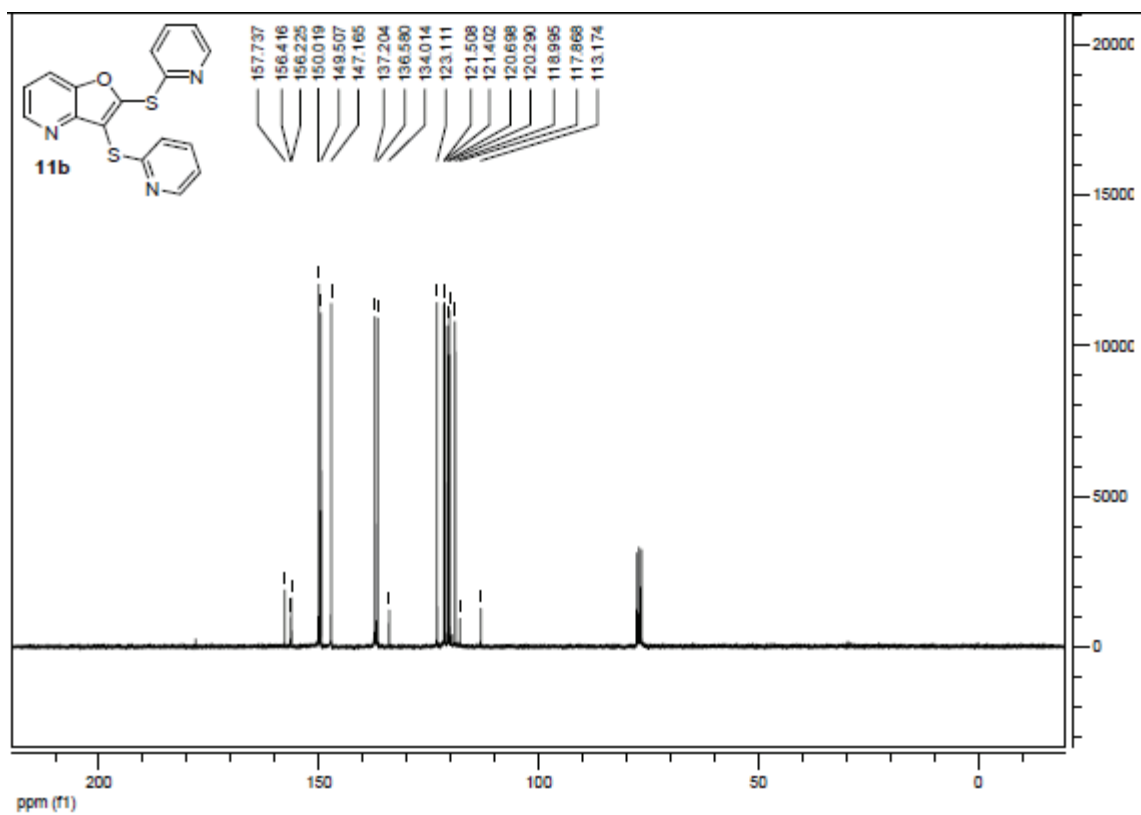
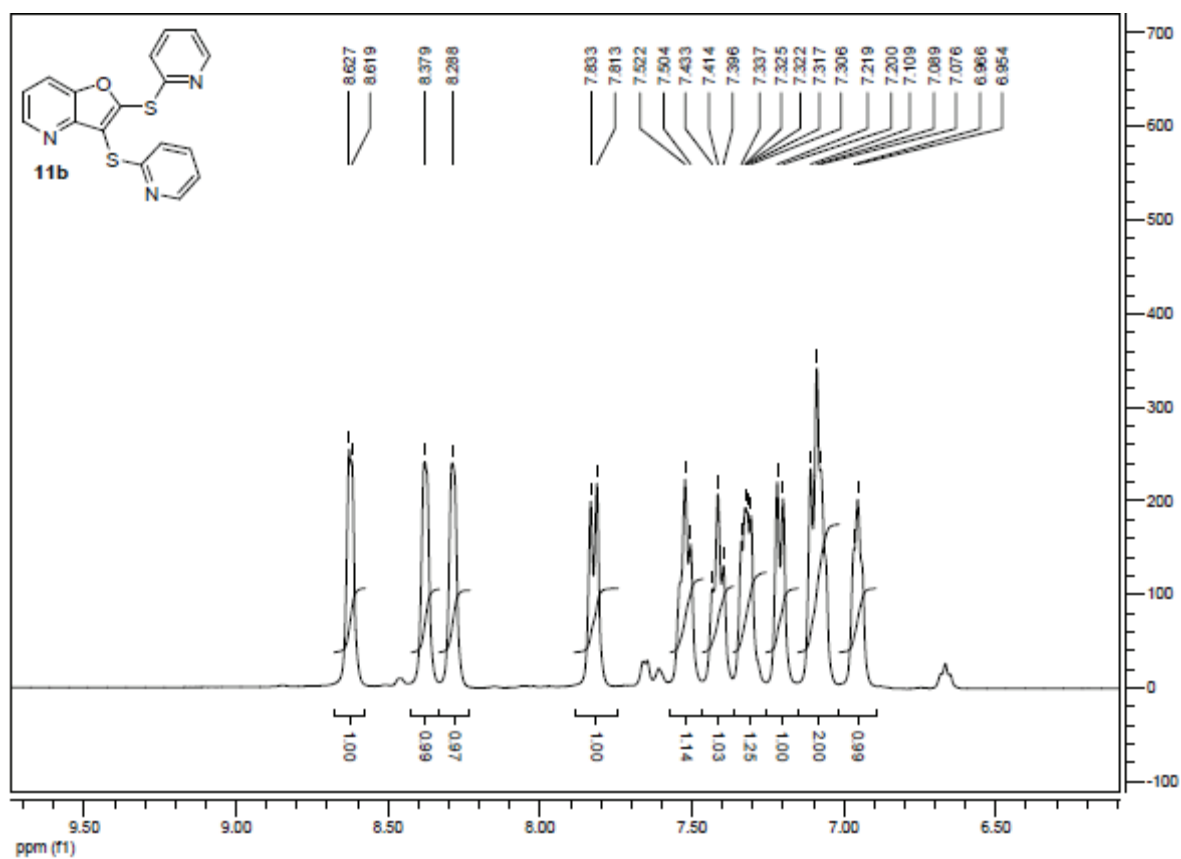


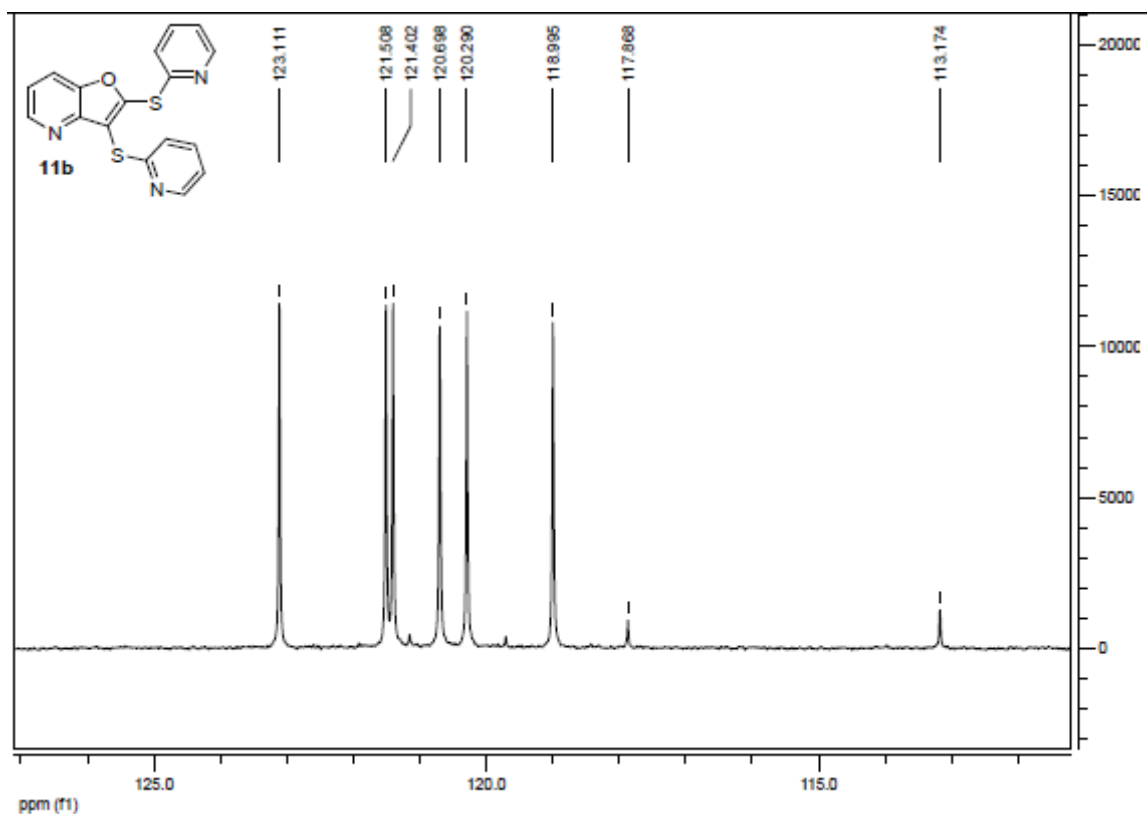
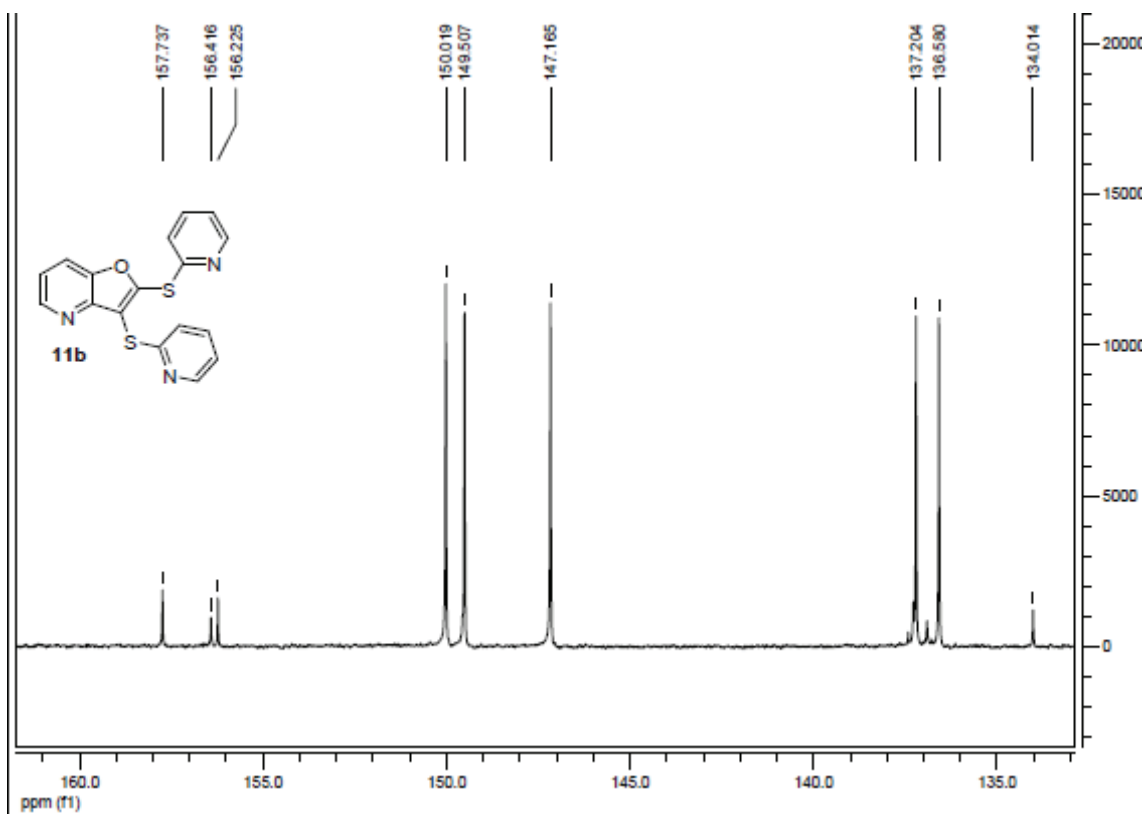
GC, ^1H and ^{13}C for 11a.



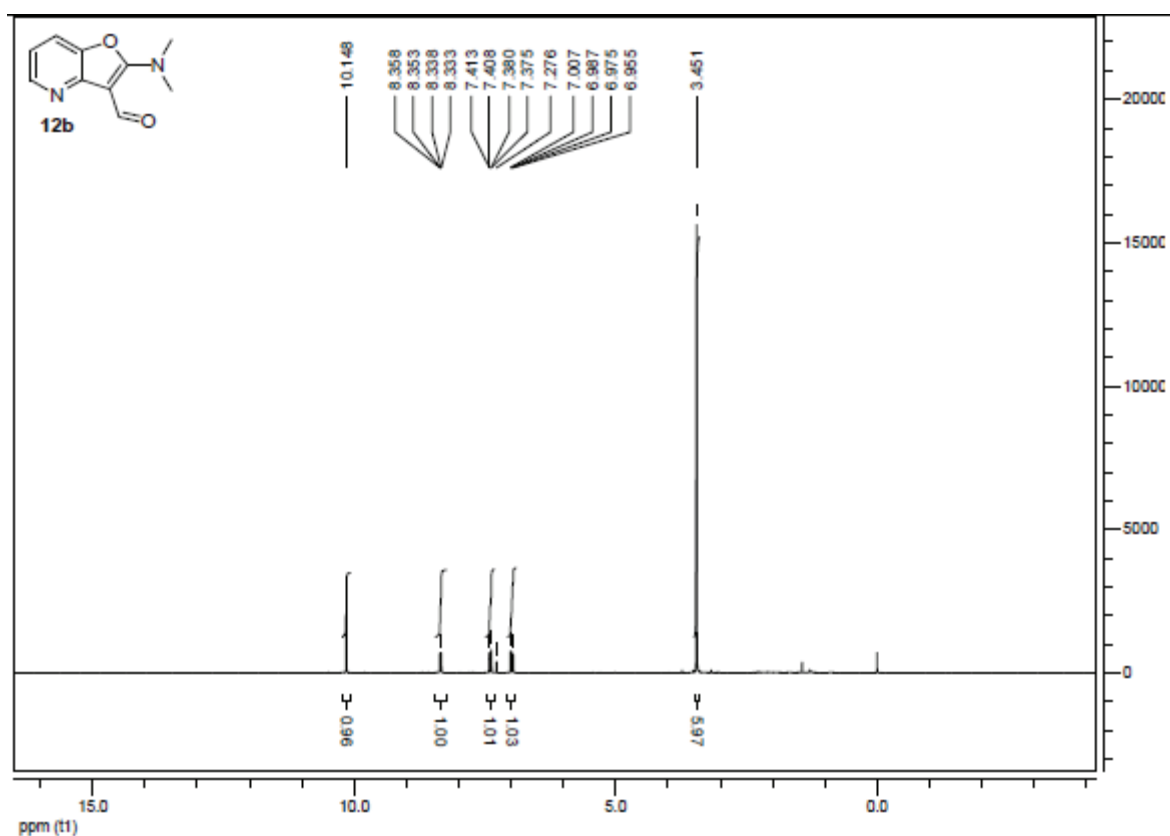
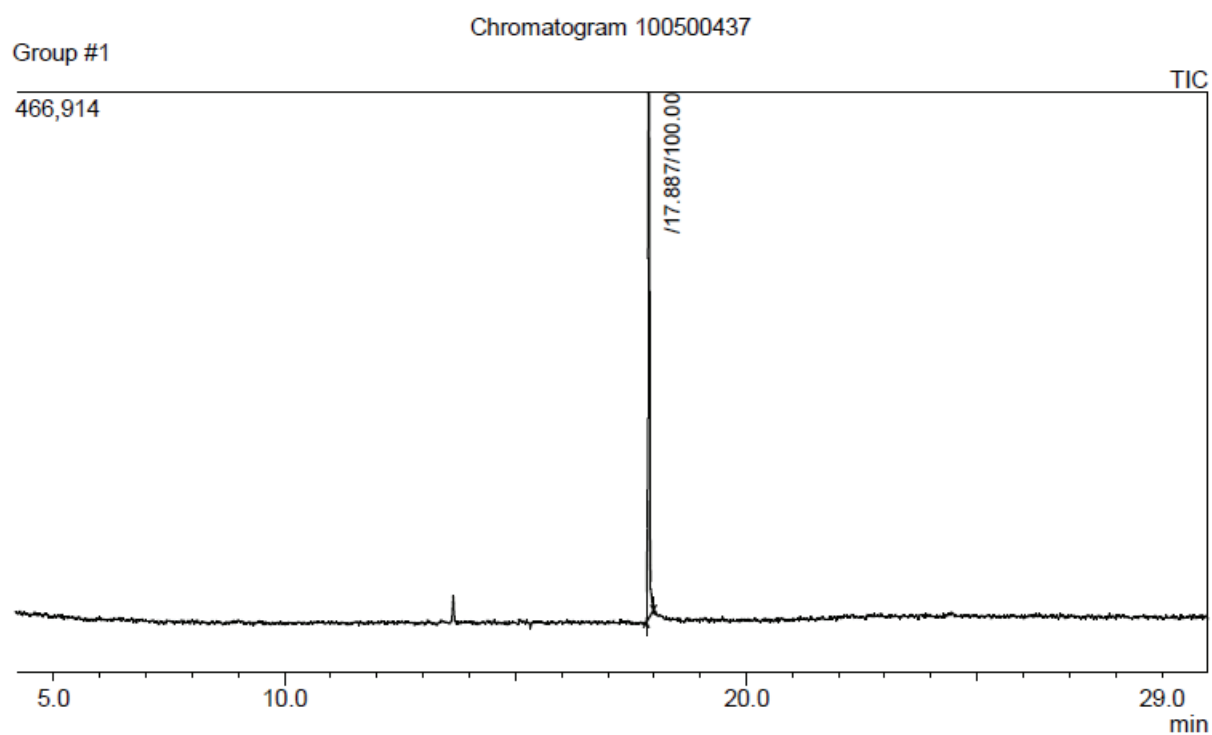


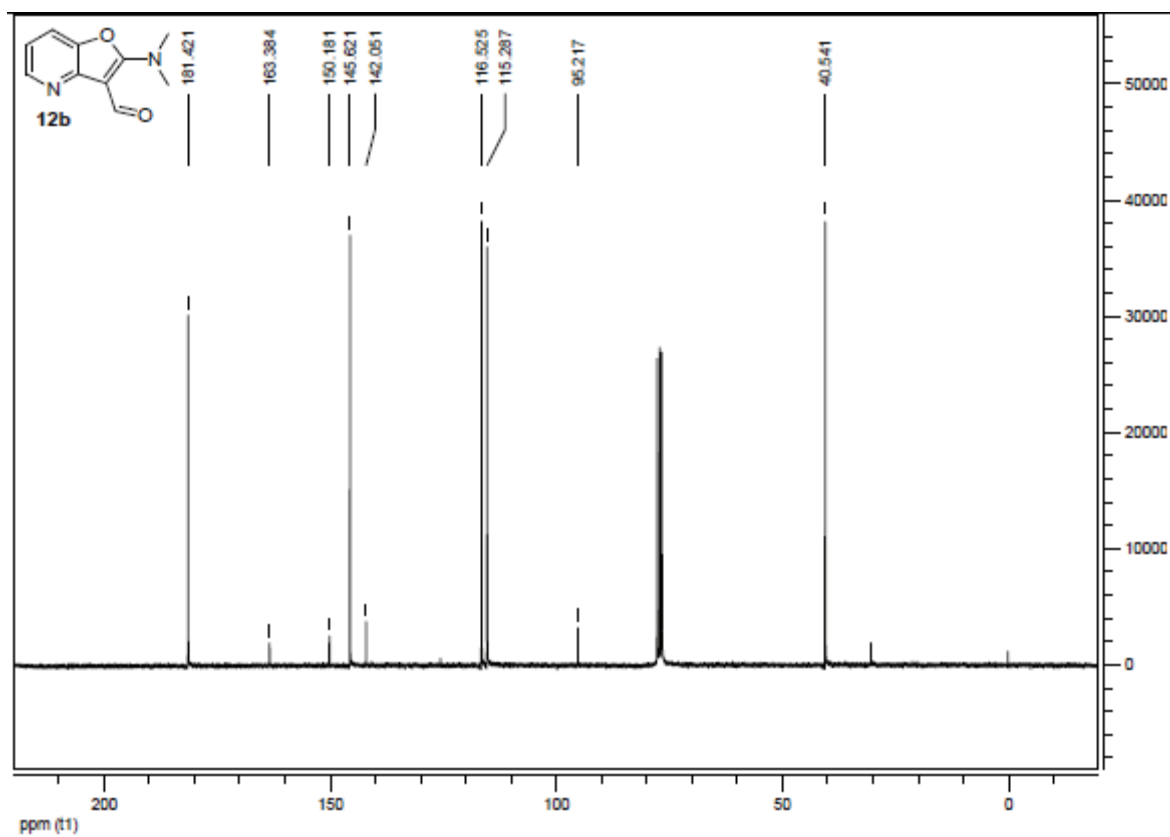
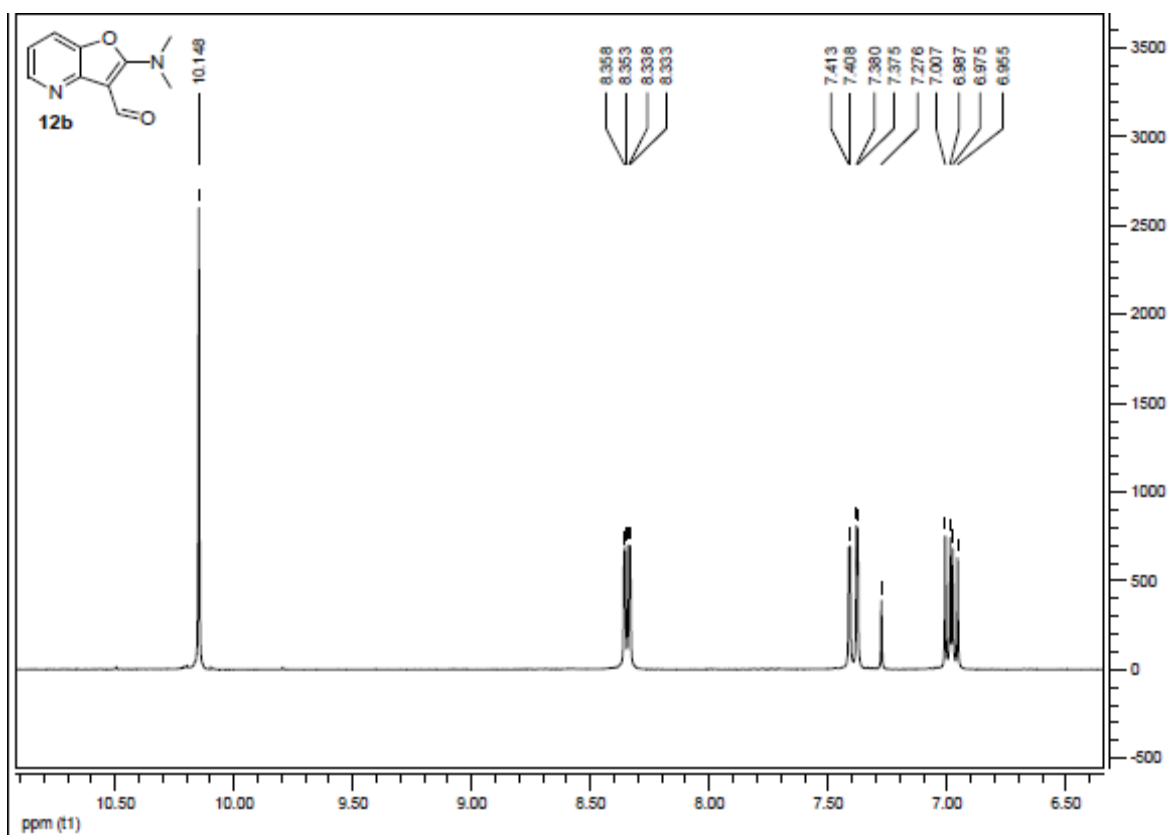




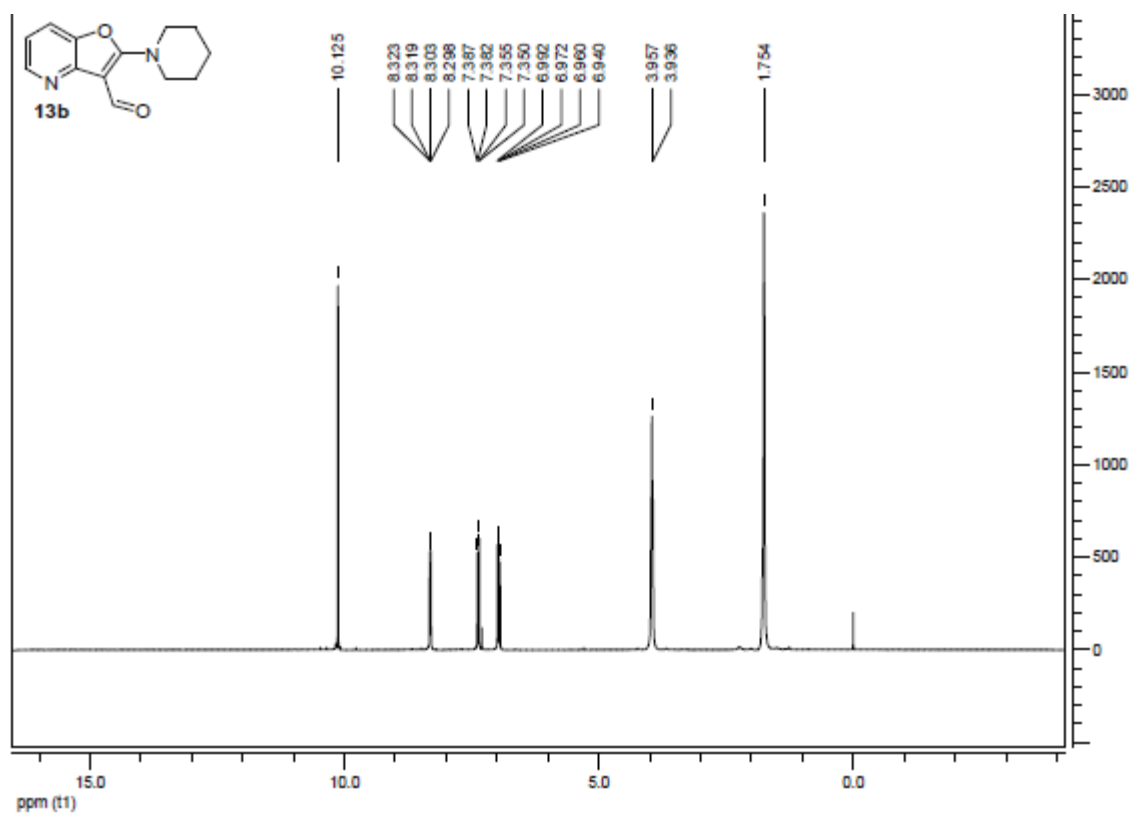
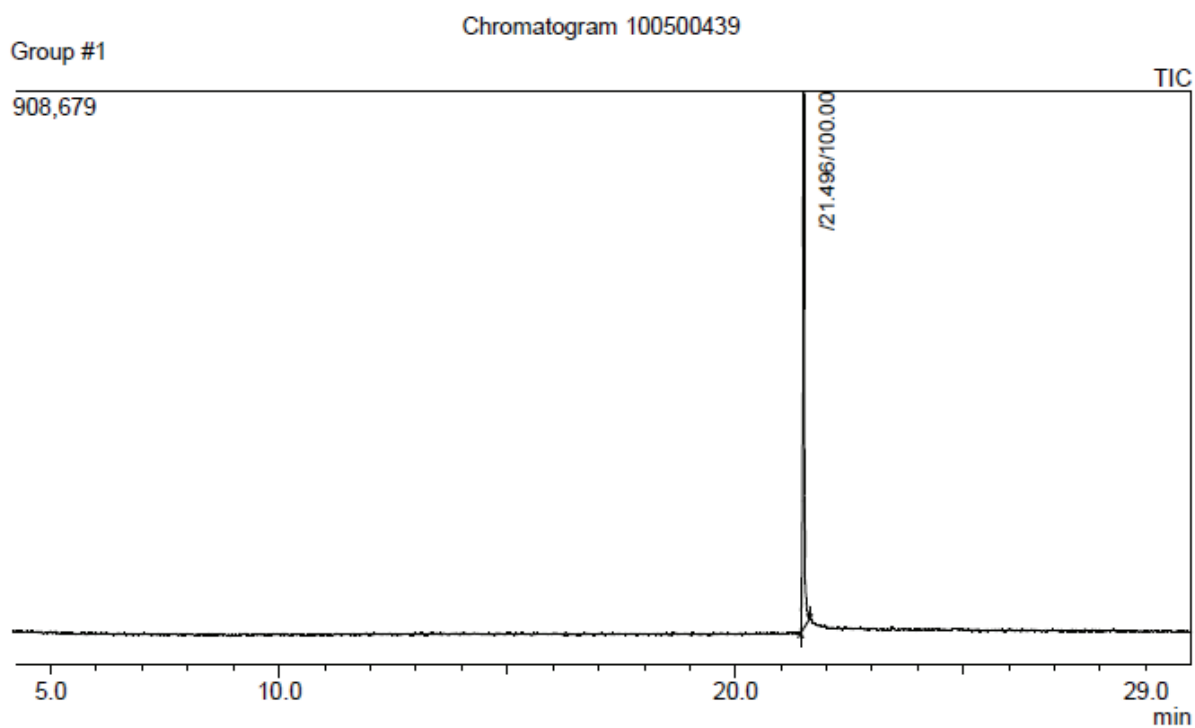


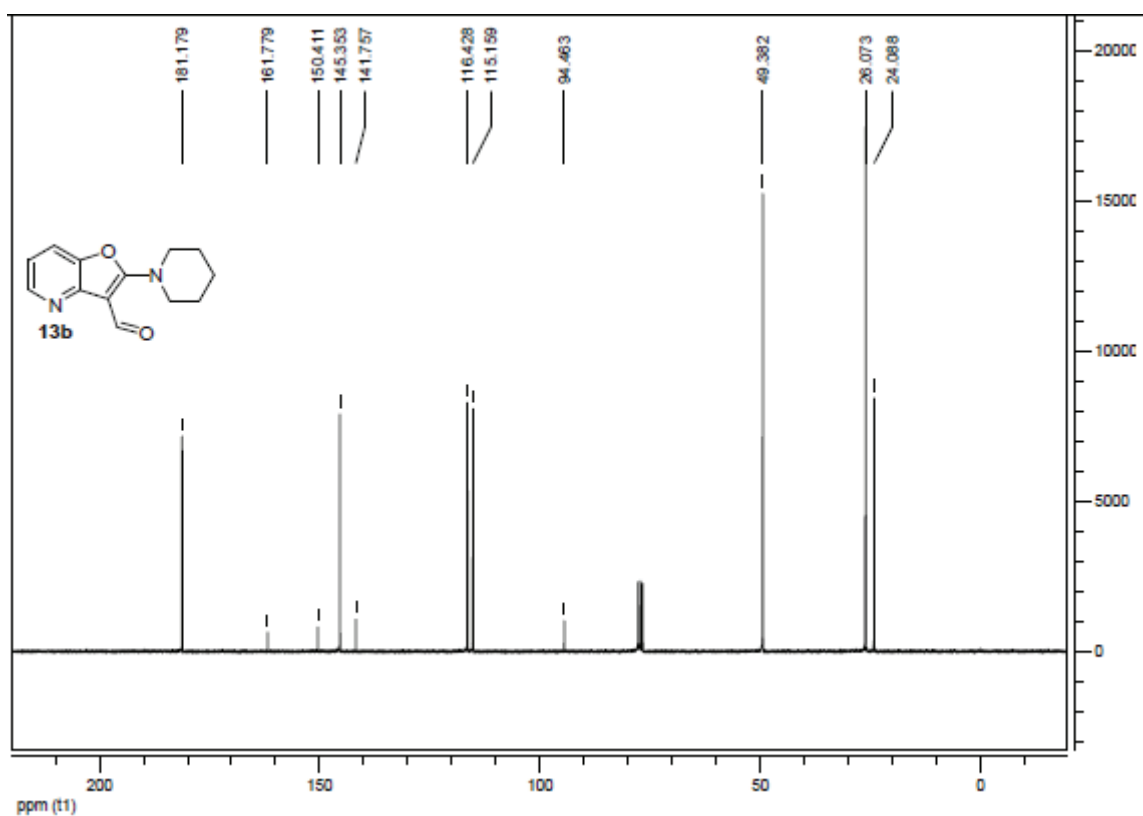
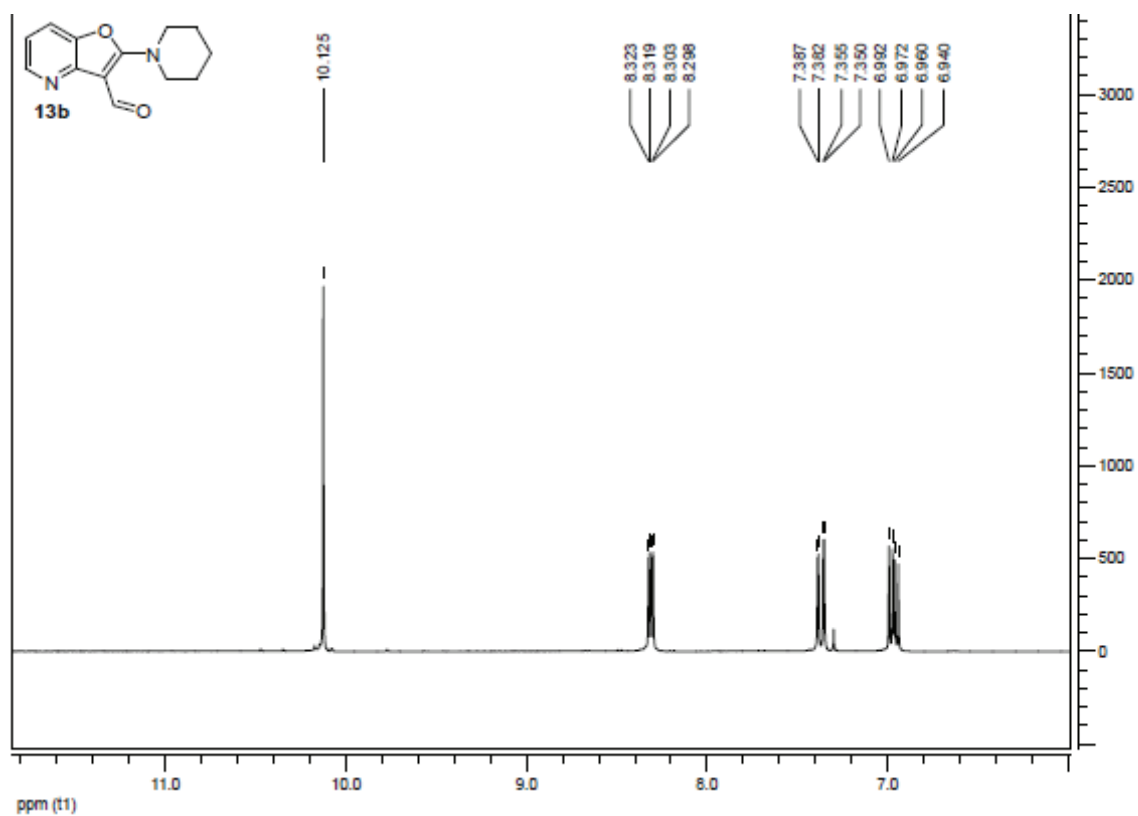
GC, ^1H and ^{13}C for 12b.



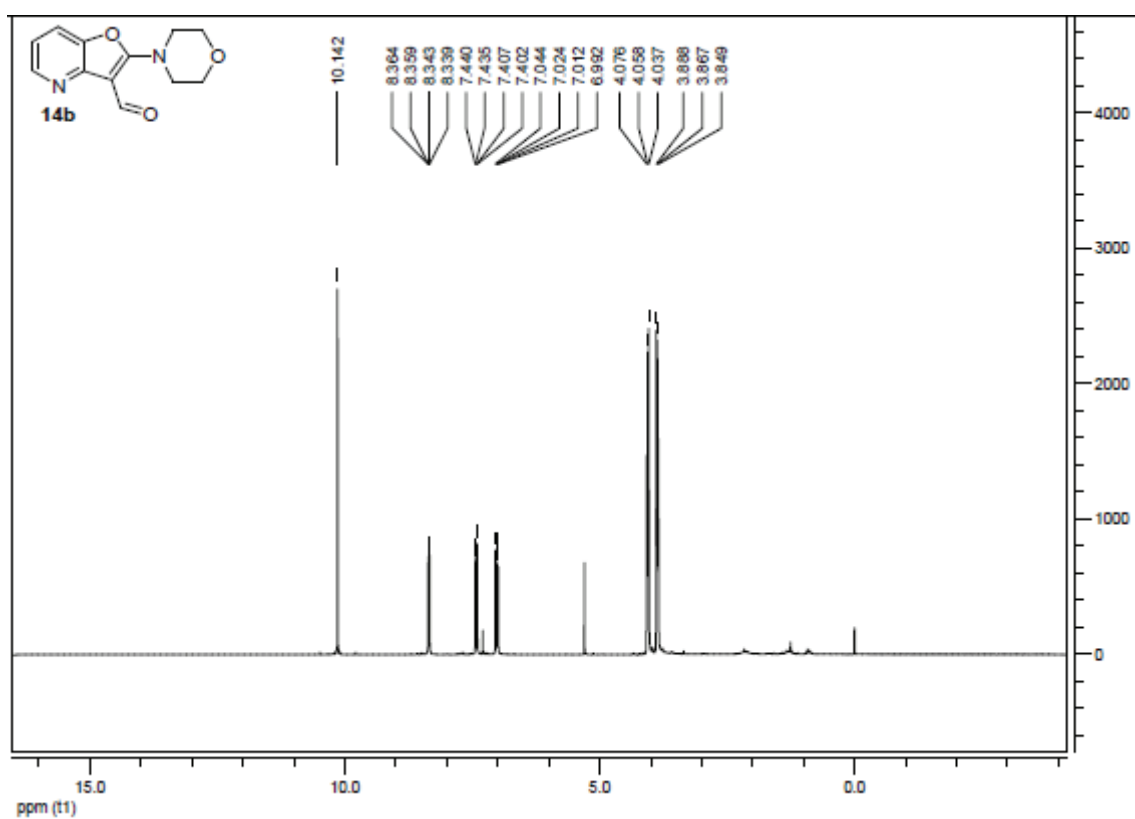
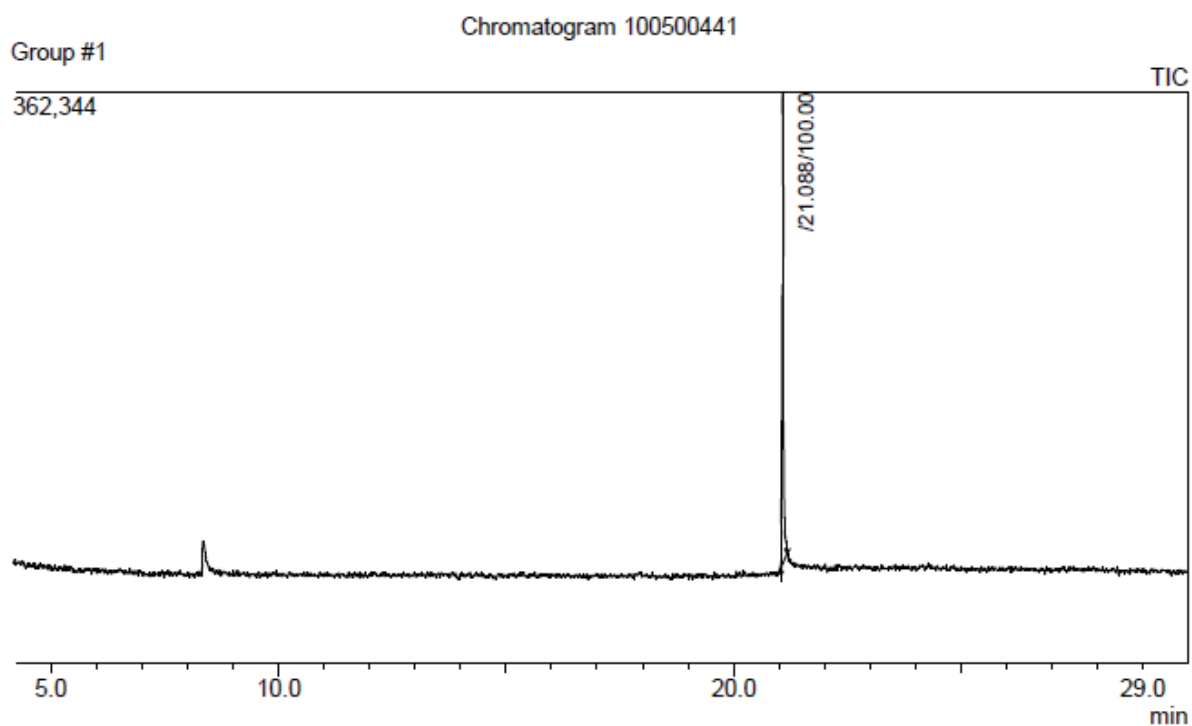


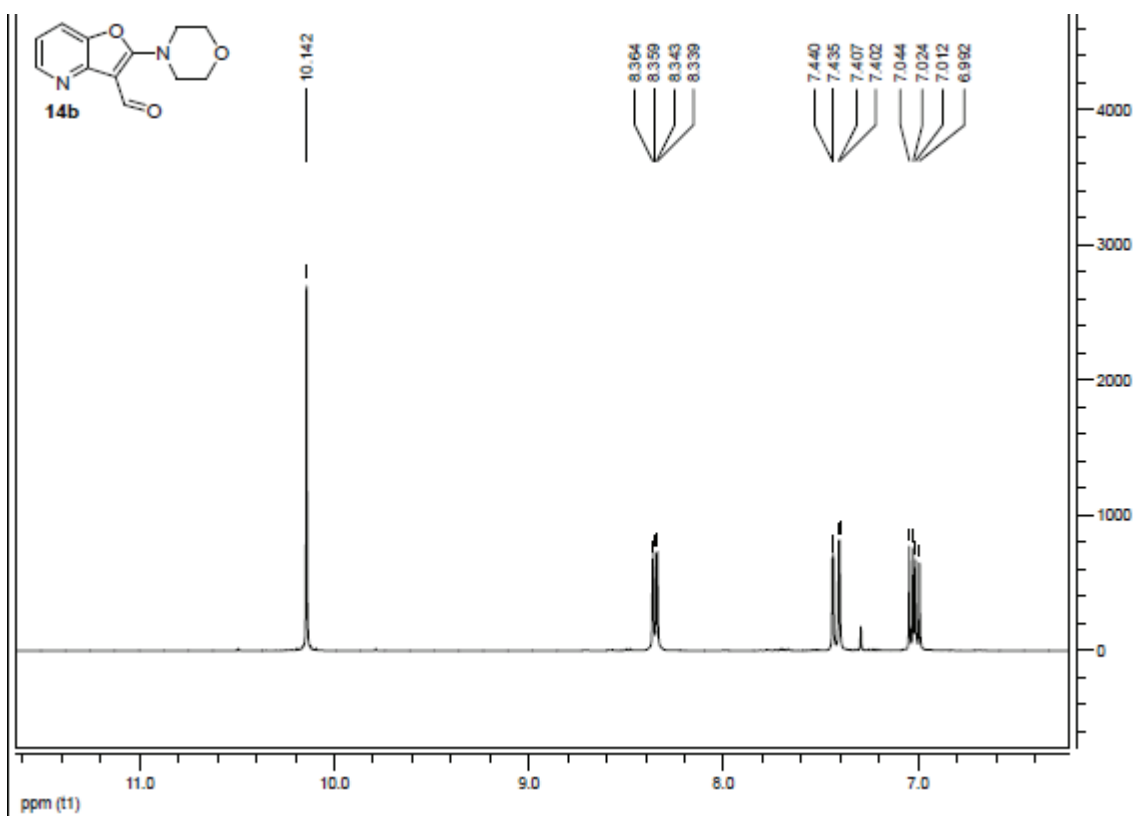
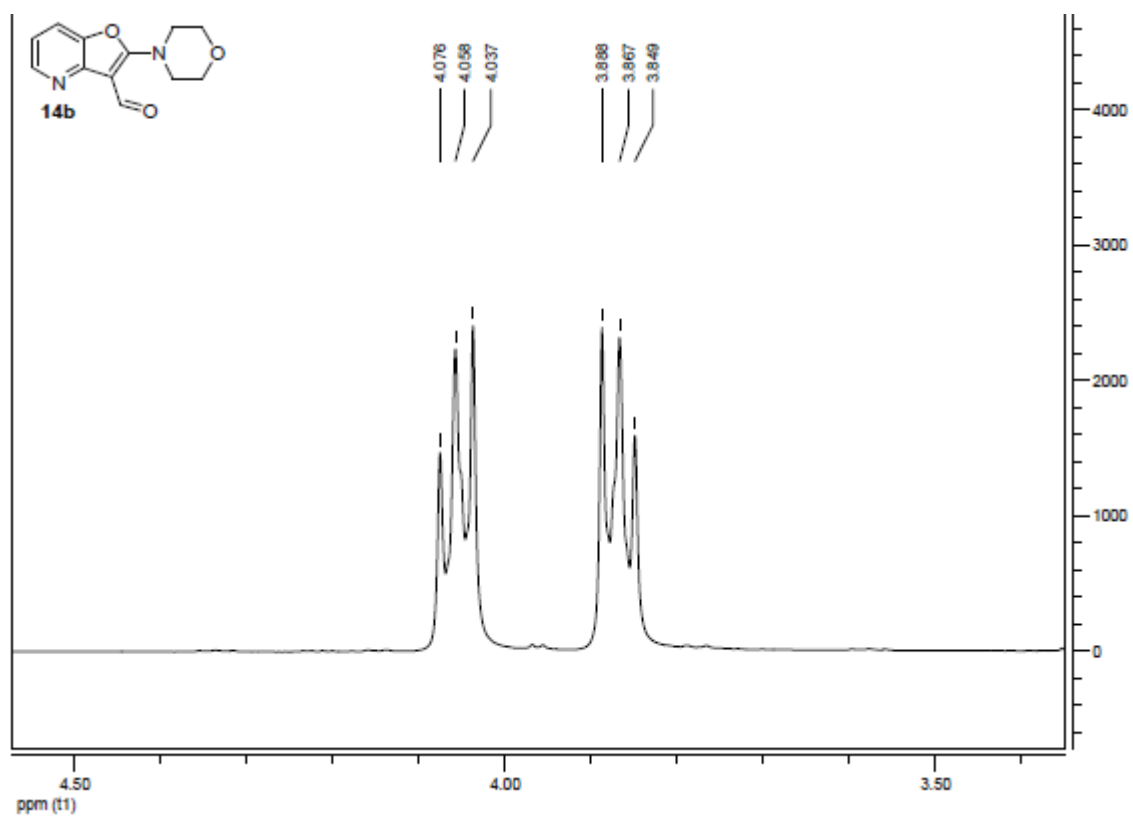
GC, ^1H and ^{13}C for 13b.

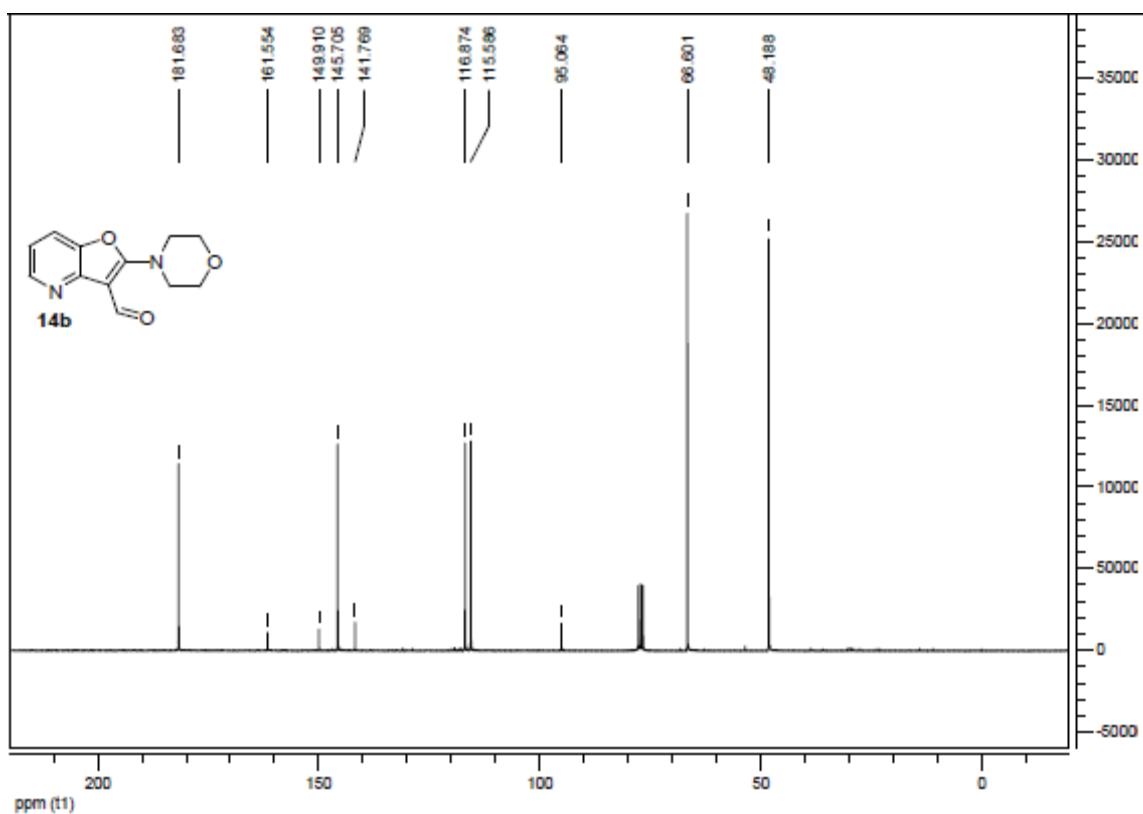




GC, ^1H and ^{13}C for 14b.







GC, ^1H and ^{13}C for **15b**.

