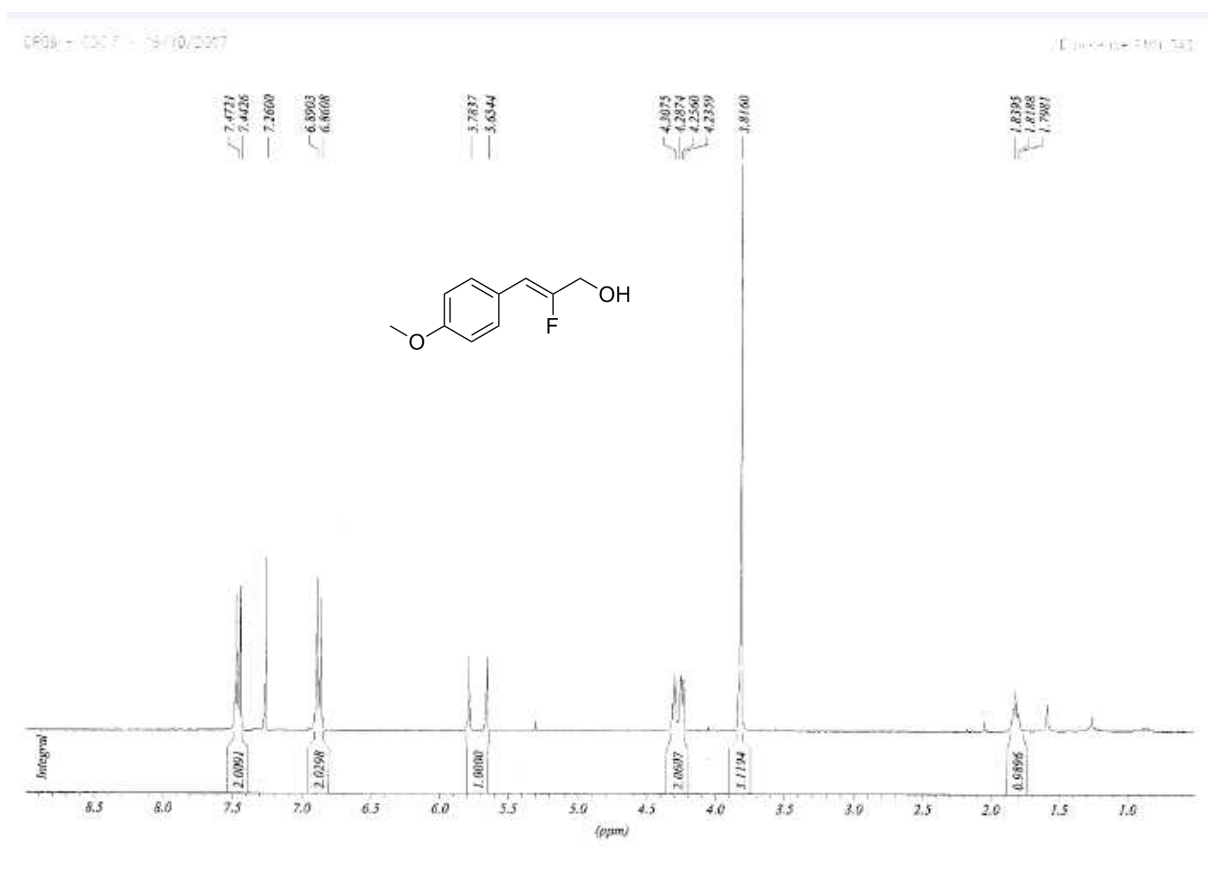


✓ **Compound (Z)-2-fluoro-3-(4-methoxyphenyl)-2-propen-1-ol:**



CPD3 - CDCl₃ - 03/07/2006

Chemical structure: COc1ccc(cc1)/C=C(F)CO

Peak list (ppm): -116.5932, -116.6507, -116.7048, -116.7363, -116.7851, -116.8399, -116.5932, -116.6500, -116.7048, -116.7363, -116.7851, -116.8399.

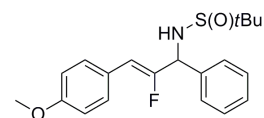
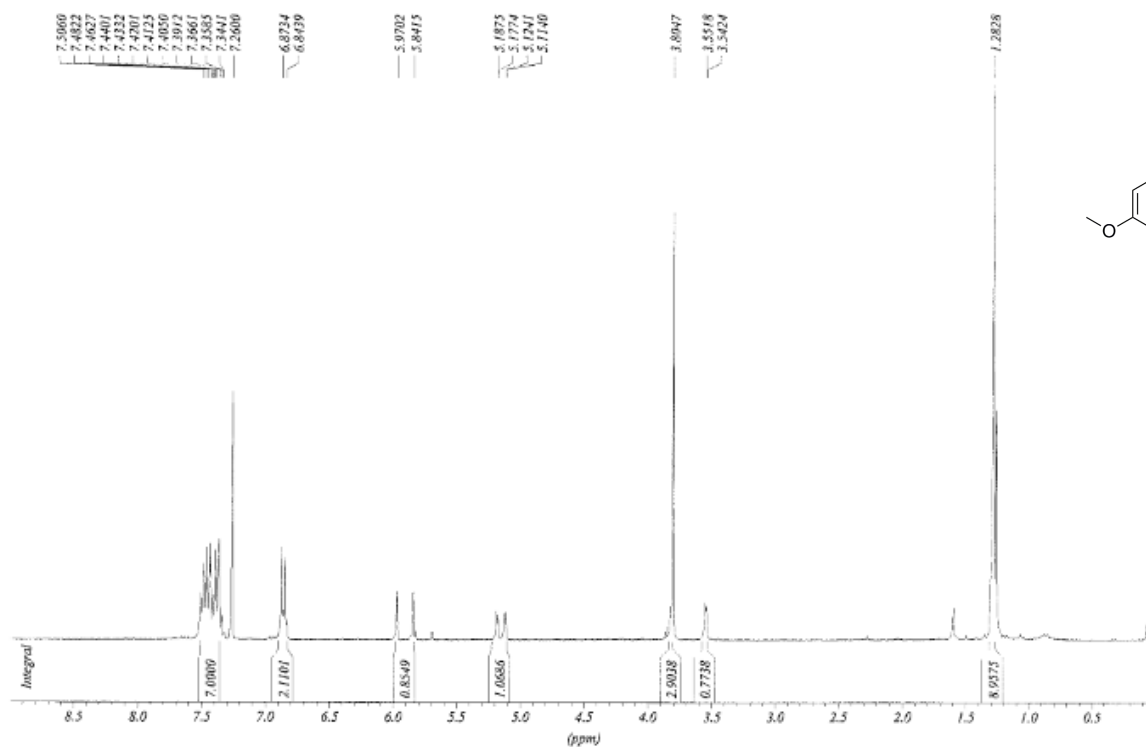
Y-axis: Integral

X-axis: (ppm)

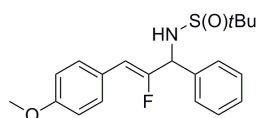
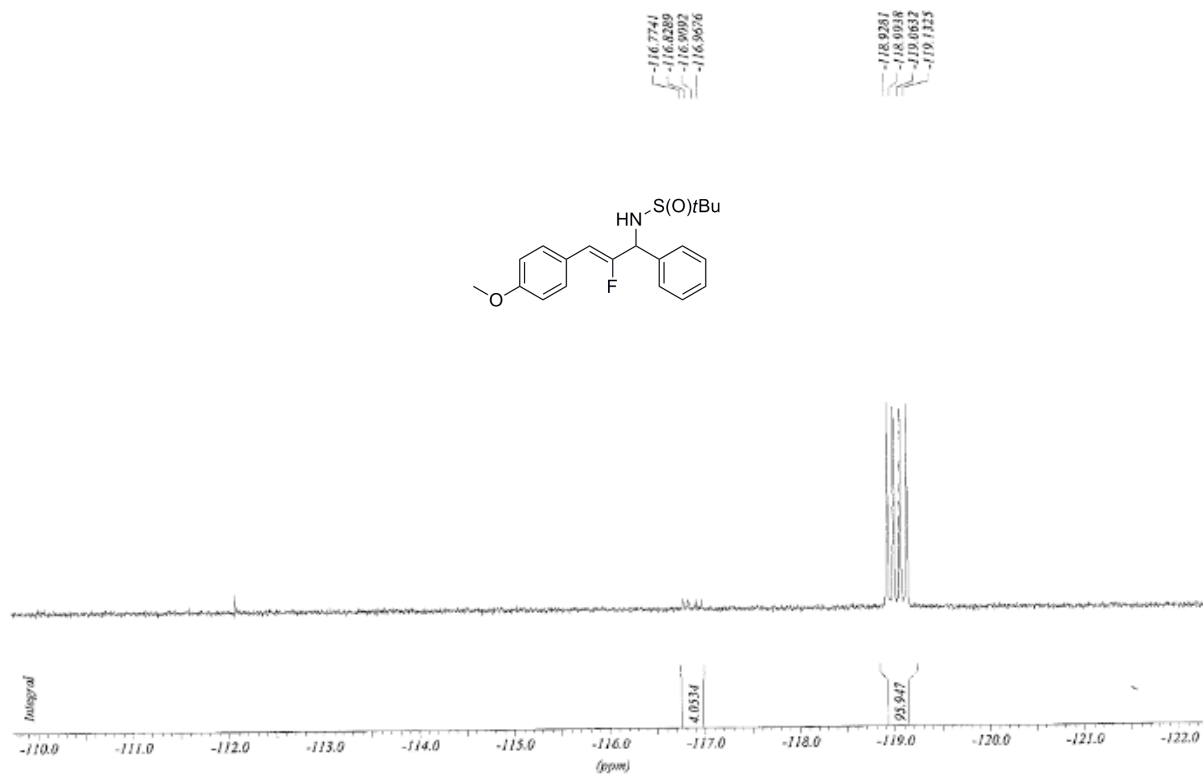
✓ **Compound N-[(Z)-2-fluoro-3-(4-methoxyphenyl)-1-phenyl-2-propenyl]-2-methyl-2-propanesulfonamide (7a)**

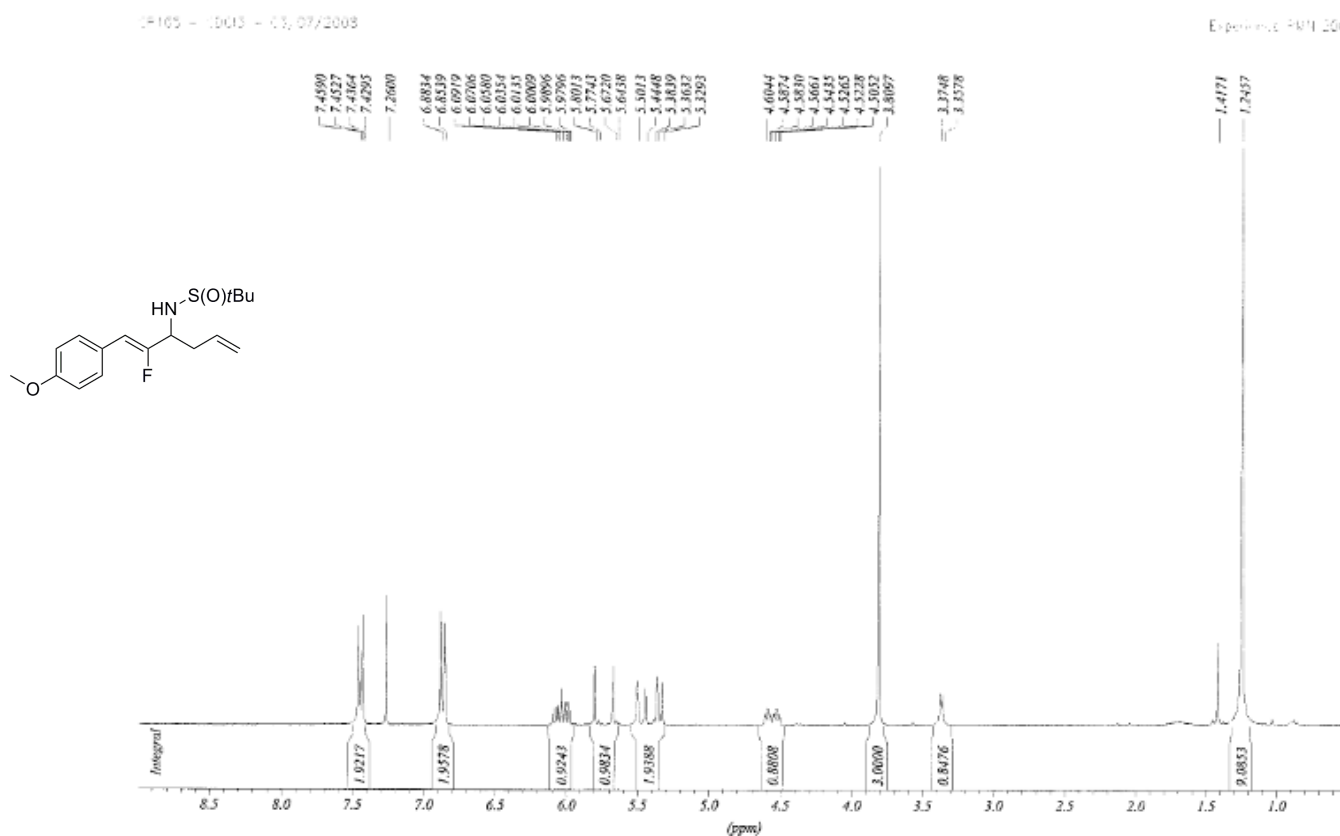
0 - F0013 - 12/11, 2007

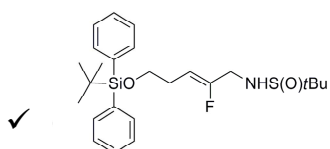
Experiment RMH



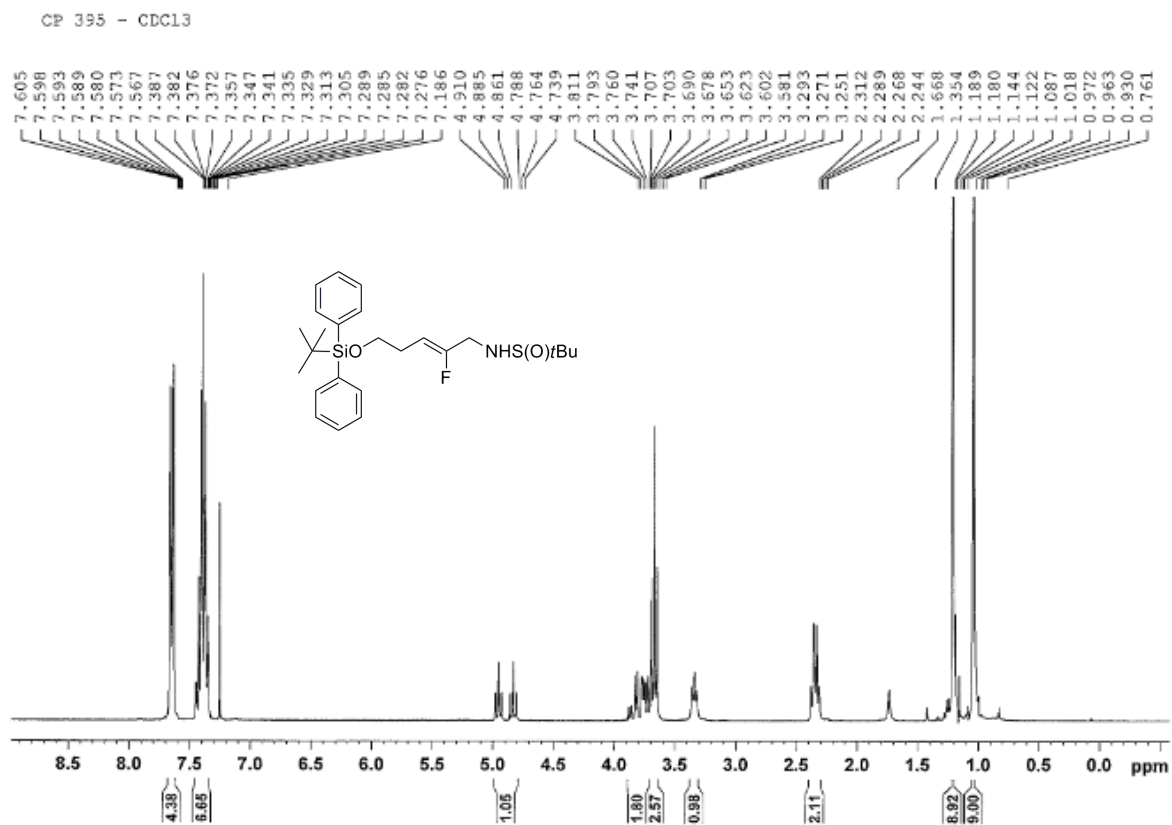
1 F025 - 09/05 - 12/11, 2007







tert-butyl(diphenyl)silyloxy)-2-fluoro-2-pentenyl)-2-methyl-2-



CP395 (Isomere (Z) - colonne : fraction 1 - CDCl₃ - 20/11/2008

Experience RMN 271

