

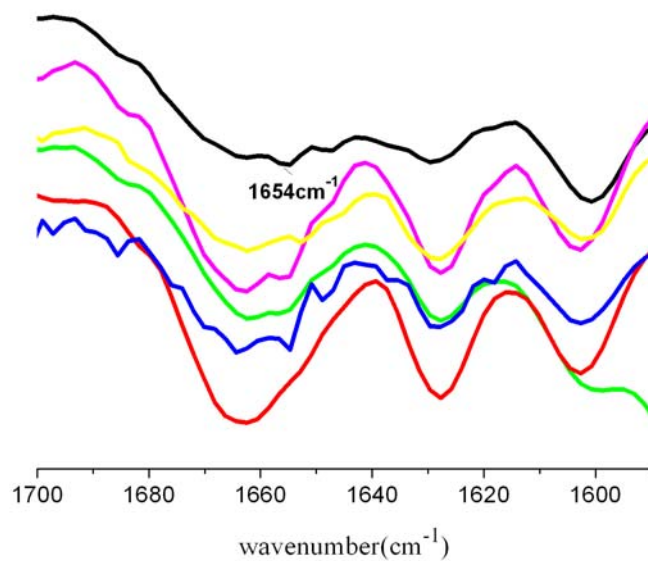
## Supporting Information for:

New dendritic gelator bearing carbazole in each branching unit:  
selected response to fluoride ion in gel phase

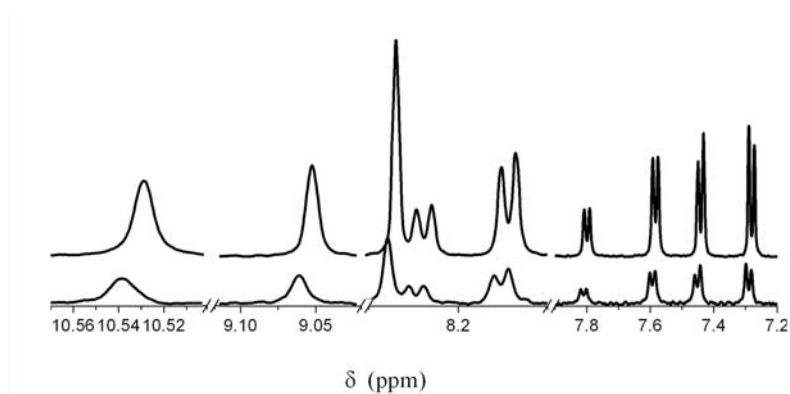
Defang Xu, Xingliang Liu, Ran Lu,<sup>\*</sup> Pengchong Xue, Xiaofei Zhang, Huipeng Zhou and  
Junhui Jia

*State Key Laboratory of Supramolecular Structure and Materials, College of Chemistry,  
Jilin University, Changchun 130012, PR China*

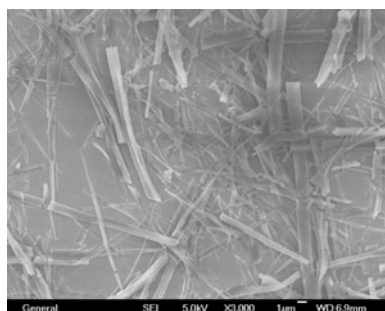
[luran@mail.jlu.edu.cn](mailto:luran@mail.jlu.edu.cn)



**Fig. S1** FT-IR spectra of **HBCD** before and after addition of 4 equiv anions (TBAX) (gel —,  $F^-$  —,  $Cl^-$  —,  $Br^-$  —,  $I^-$  —,  $AcO^-$  —).



**Fig. S2**  $^1H$  NMR spectra of **HBCD** at different concentrations:  $8.3 \times 10^{-4}$  M (upper);  $1.7 \times 10^{-3}$  M (below).



**Fig. S3** SEM image of the destroyed DMSO gel of **HBCD** upon addition of 4 equiv  $F^-$ .

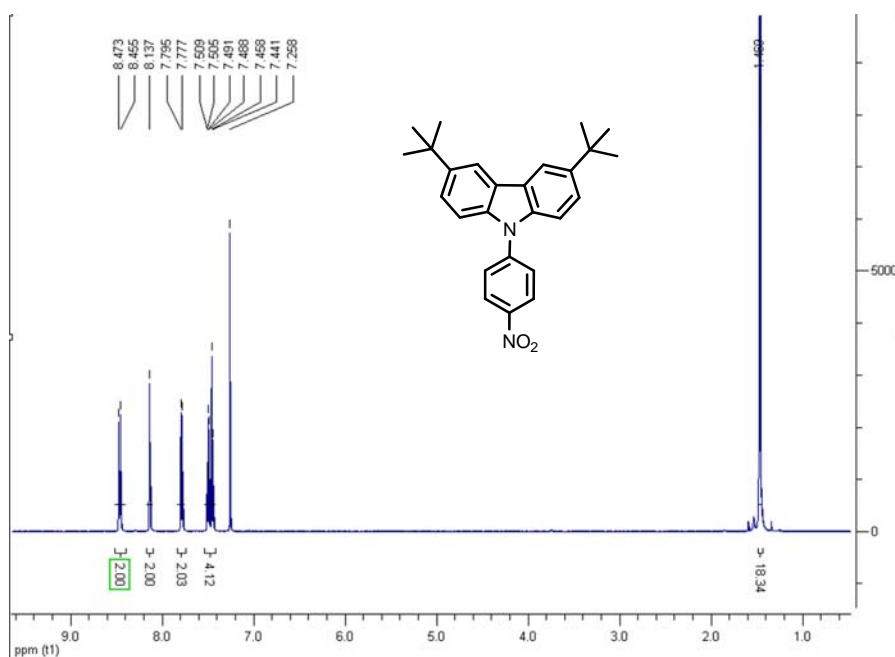


Fig. S4  $^1\text{H}$  NMR (500 MHz) spectrum of **1**.

Reflection Mode

Data: 4000001.A5 25 Dec 2009 16:55 Cal: 5 May 2010 13:46  
Kratos PC Axima CFR V2.3.1: Mode default\_reflectron, Power: 70, P.Ext.: @ 400 (bin 57)  
%Int. 99 mV[sum= 15808 mV] Profiles 1-159 Smooth Av 20 -Baseline 80

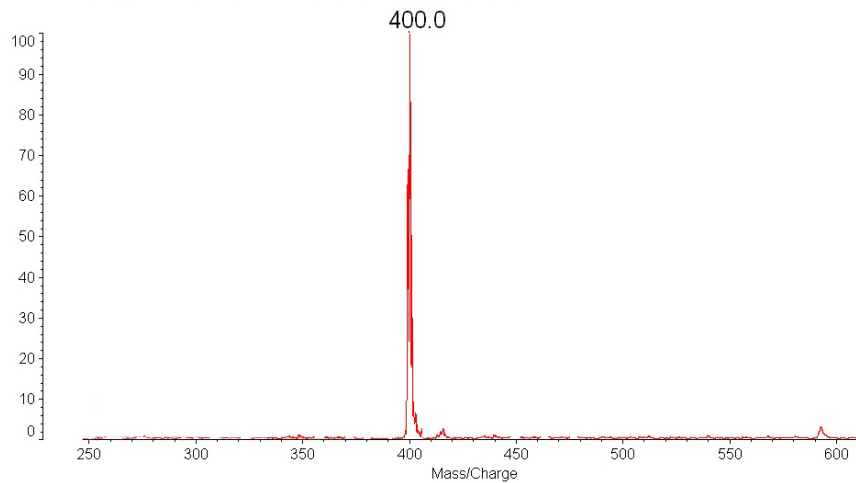
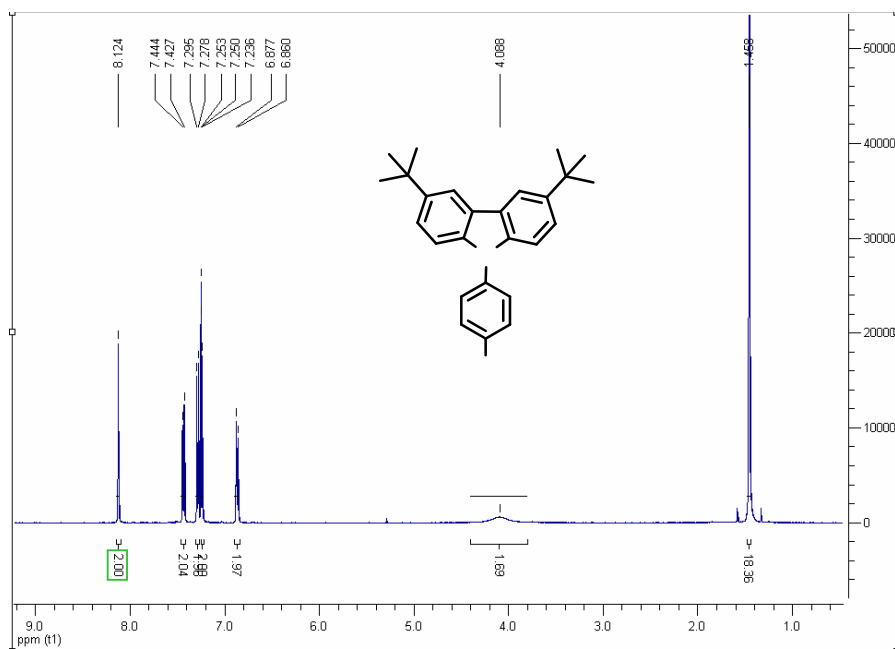


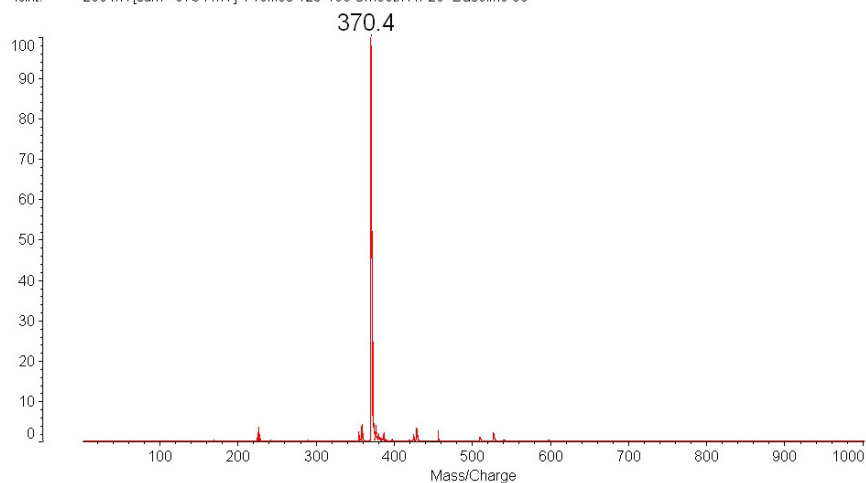
Fig. S5 MALDI-TOF MS spectrum of **1**.



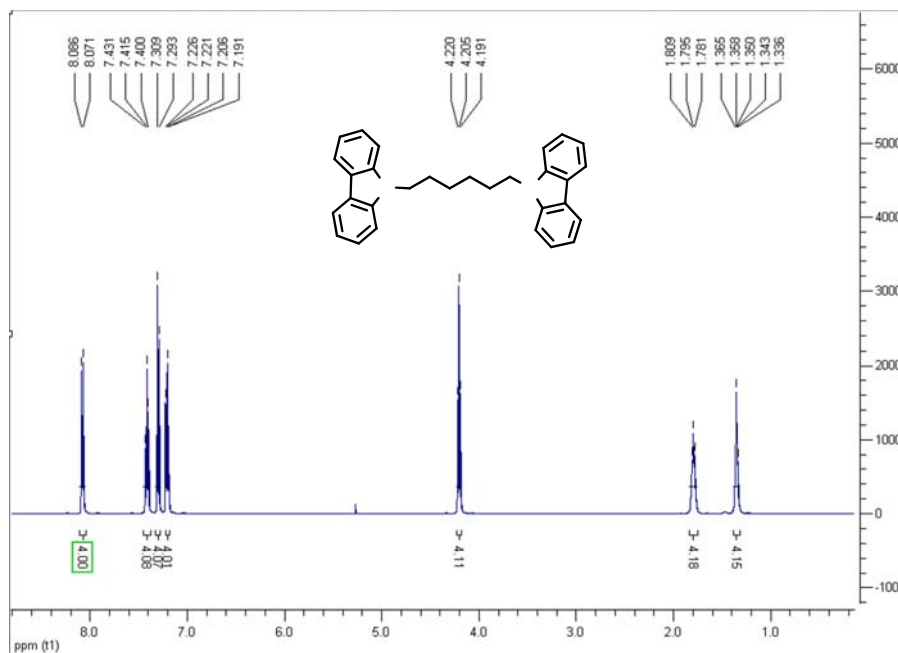
**Fig. S6**  $^1\text{H}$  NMR (500 MHz) spectrum of **2**.

Reflection Mode

Data: 370001.B5 25 Dec 2009 16:57 Cal: 6 Jan 2010 21:53  
Kratos PC Axima CFR V2.3.1: Mode default\_reflectron, Power: 55, P.Ext. @ 370 (bin 57)  
%Int. 295 mV[sum= 9734 mV] Profiles 123-155 Smooth Av 20 -Baseline 80



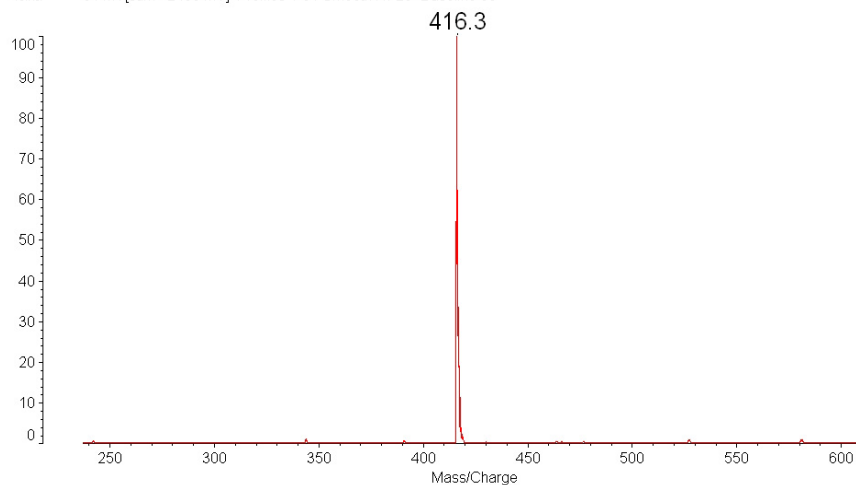
**Fig. S7** MALDI-TOF MS spectrum of **2**.



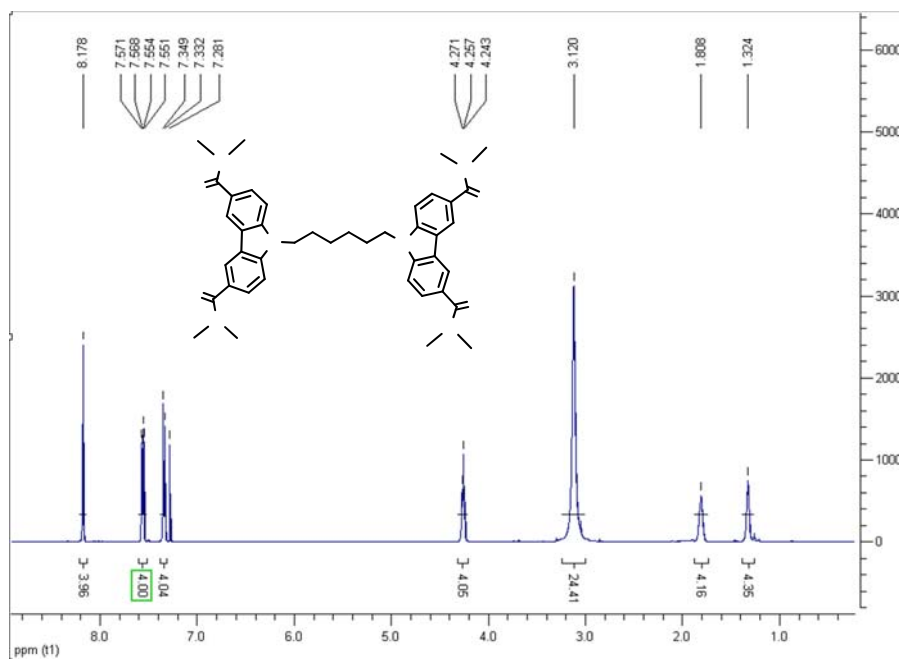
**Fig. S8** <sup>1</sup>H NMR (500 MHz) spectrum of **3**.

Reflectron Mode

Data: 4160001.C5 25 Dec 2009 16:58 Cat: 5 May 2010 13:48  
Kratos PC Axima CFR V2.3.1: Mode default\_reflectron, Power: 36, P.Ext. @416 (bin 57)  
%Int. 31 mV[sum= 2499 mV] Profiles 1-81 Smooth Av 20 -Baseline 80



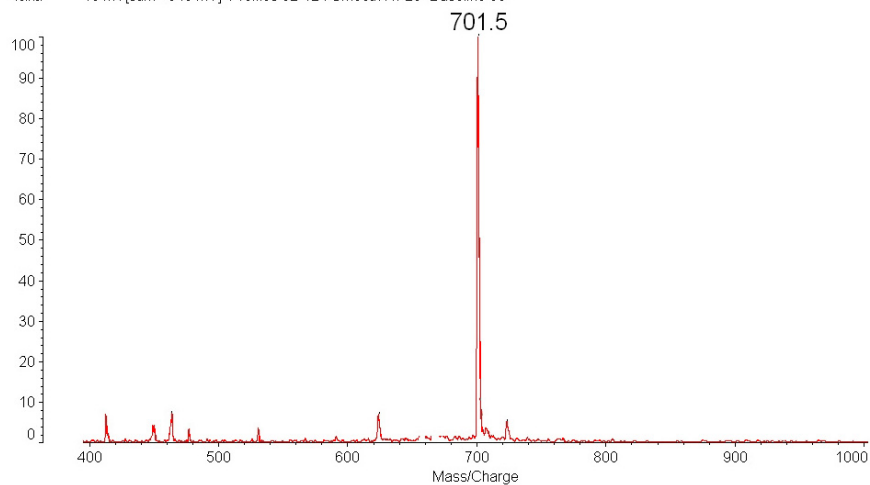
**Fig. S9** MALDI-TOF MS spectrum of **3**.



**Fig. S10**  $^1\text{H}$  NMR (500 MHz) spectrum of **4**.

Reflectron Mode

Data: 700.370001.D5 25 Dec 2009 16:59 Cal: 5 May 2010 13:48  
Kratos PC Axima CFR V2.3.1: Mode default\_reflectron, Power: 50, P.Ext. @ 700 (bin 72)  
%Int. 15 mV[sum= 643 mV] Profiles 82-124 Smooth Av 20 -Baseline 80



**Fig. S11** MALDI-TOF MS spectrum of **4**.

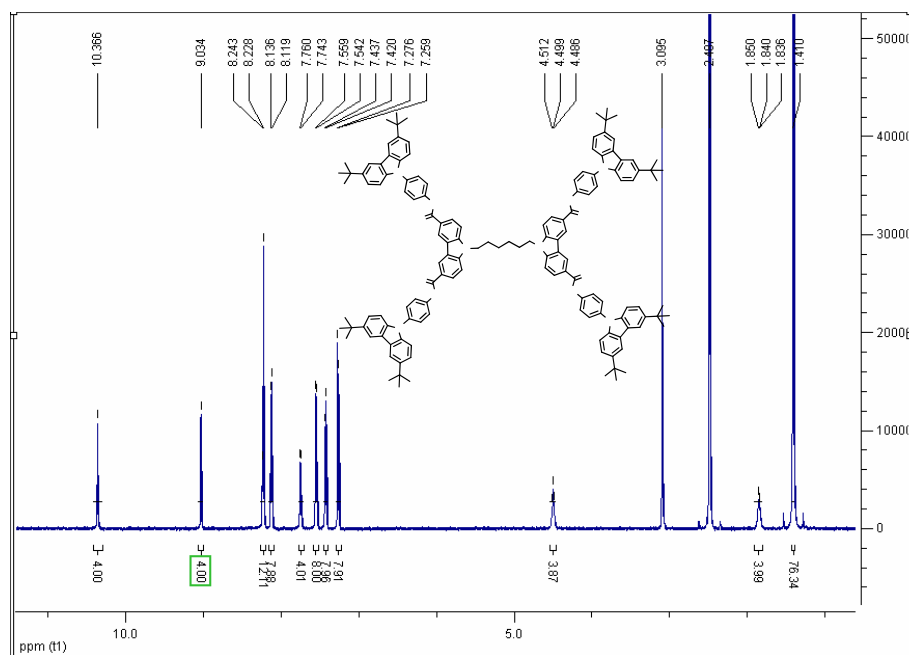


Fig.S12 <sup>1</sup>H NMR (500 MHz) spectrum of HBCD.

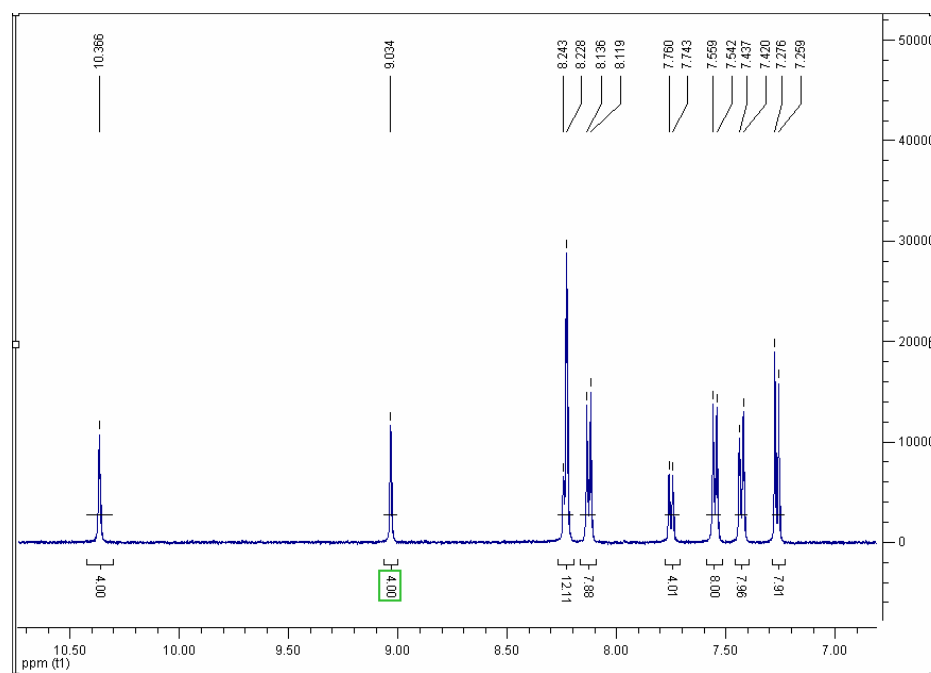
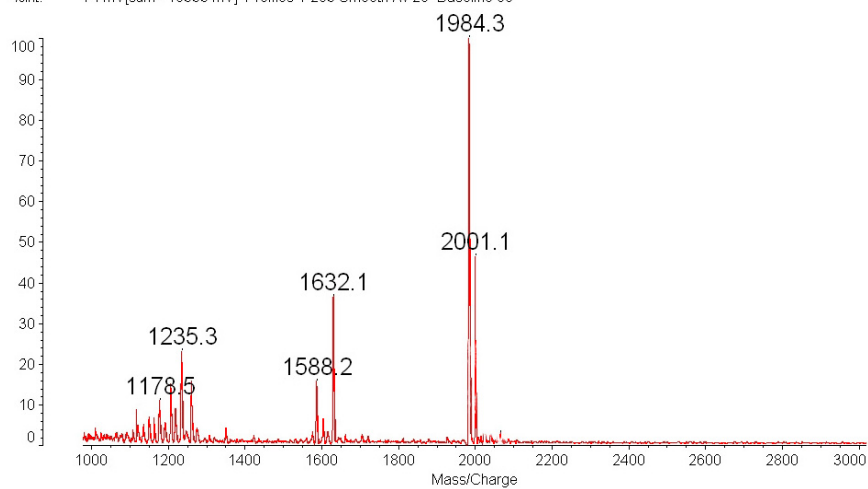


Fig. S13 <sup>1</sup>H NMR (500 MHz) spectrum of HBCD.

Reflectron Mode

Data: 2002R0001.G2 27 Oct 2009 10:13 Cal: 28 Oct 2009 13:40  
Kratos PC Axima CFR V2.3.1: Mode default\_reflectron, Power: 85, P.Ext. @ 2002 (bin 123)  
%Int. 74 mV[sum= 19333 mV] Profiles 1-263 Smooth Av 20 -Baseline 80



**Fig. S14** MALDI-TOF MS spectrum of **HBCD**.