

Current Data Parameters  
 NAME dez1599  
 EXPNO 81  
 PROCNO 1

F2 - Acquisition Parameters  
 Date\_ 991215  
 Time 14.04  
 INSTRUM avance400  
 PROBHD 5 mm QNP 13  
 PULPROG jmod  
 TD 65536  
 SOLVENT CDCl3  
 NS 1000  
 DS 2  
 SWH 25062.656 Hz  
 FIDRES 0.382426 Hz  
 AQ 1.3074932 sec

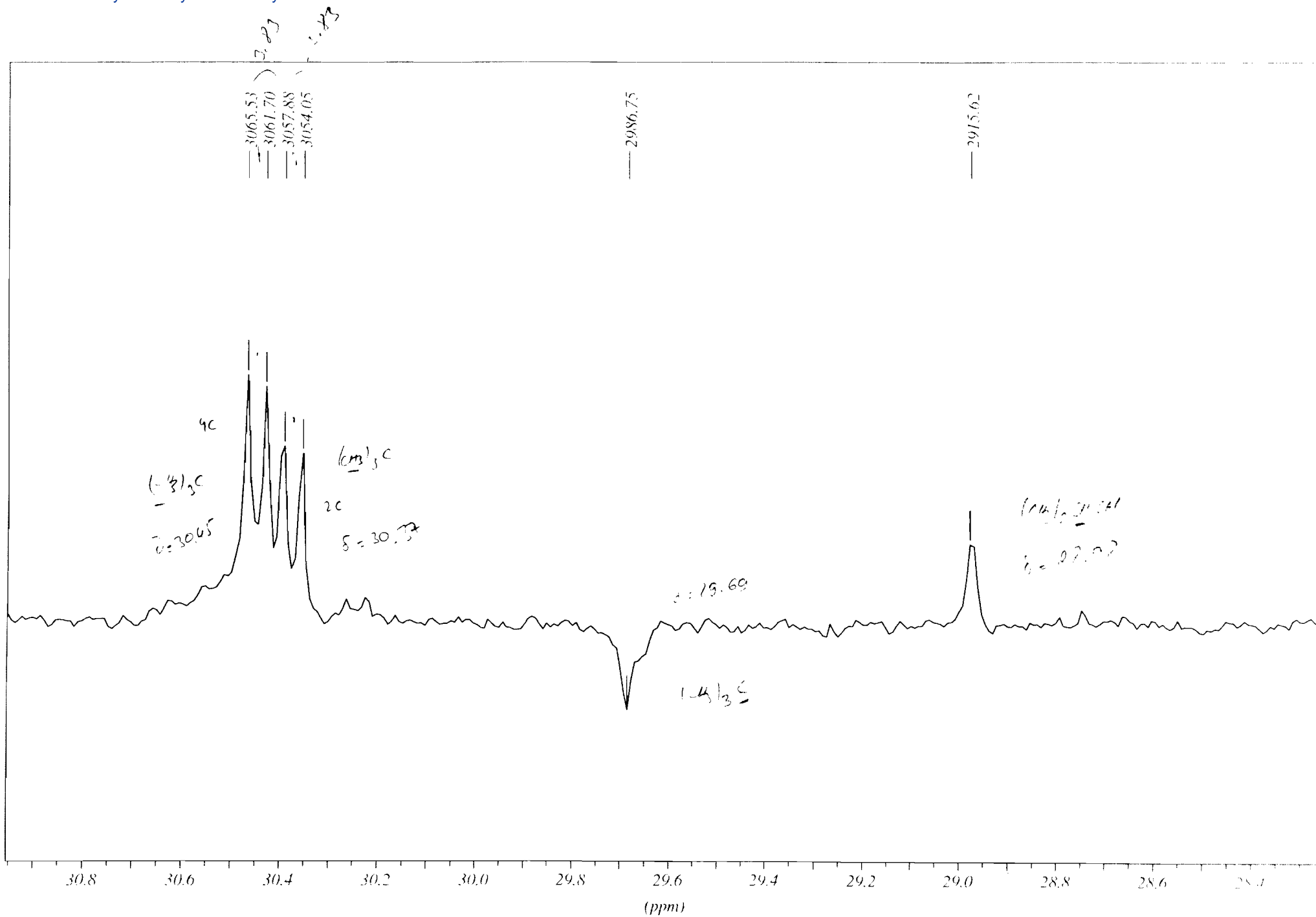
DW 19.950 usec  
 DE 6.00 usec  
 TE 300.0 K  
 CNST2 145.0000000  
 CNST11 1.0000000  
 O1 2.0000000 sec  
 d13 0.00000300 sec  
 d20 0.00689655 sec  
 DELTA 0.00001273 sec

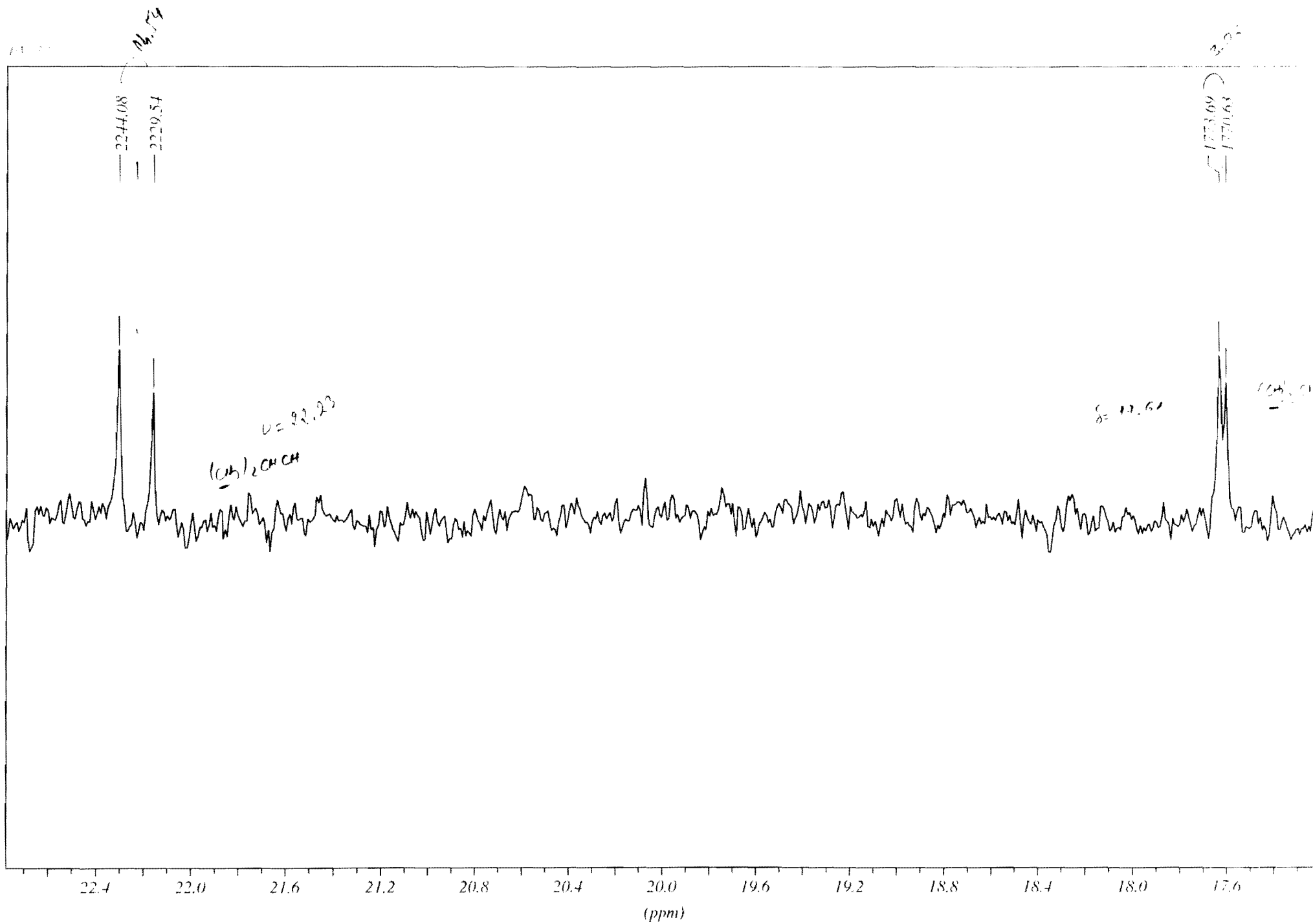
==== CHANNEL f1 =====  
 NUC1 13C  
 P1 10.00 usec  
 p2 20.00 usec  
 PL1 0.00 dB  
 SFO1 100.6232933 MHz

==== CHANNEL f2 =====  
 CPOPRG2 waltz16  
 NUC2 1H  
 PCPD2 100.00 usec  
 PL2 -4.00 dB  
 PL12 14.00 dB  
 SFO2 400.1316005 MHz

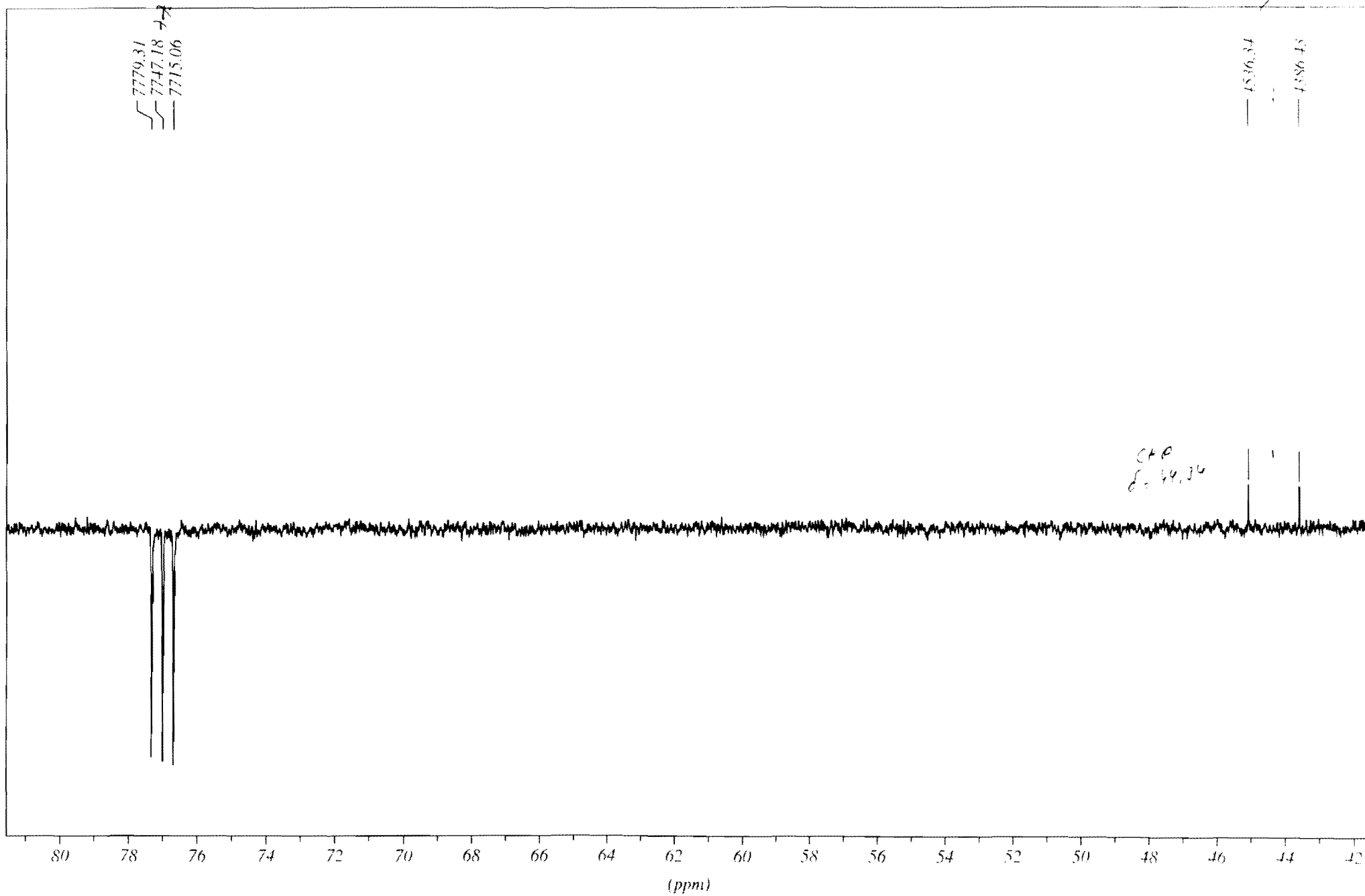
F2 - Processing parameters  
 SI 32768  
 SF 100.6127290 MHz  
 NDM EM  
 SSB 0  
 LB 1.00 Hz  
 GB 0  
 PC 1.40

1D NMR plot parameters  
 CX 30.00 cm  
 F1P 225.000 ppm  
 F1 22637.87 Hz  
 F2P -15.000 ppm  
 F2 -1509.19 Hz  
 PPMCM 8.00000 ppm/cm  
 HZCM 804.90186 Hz/cm



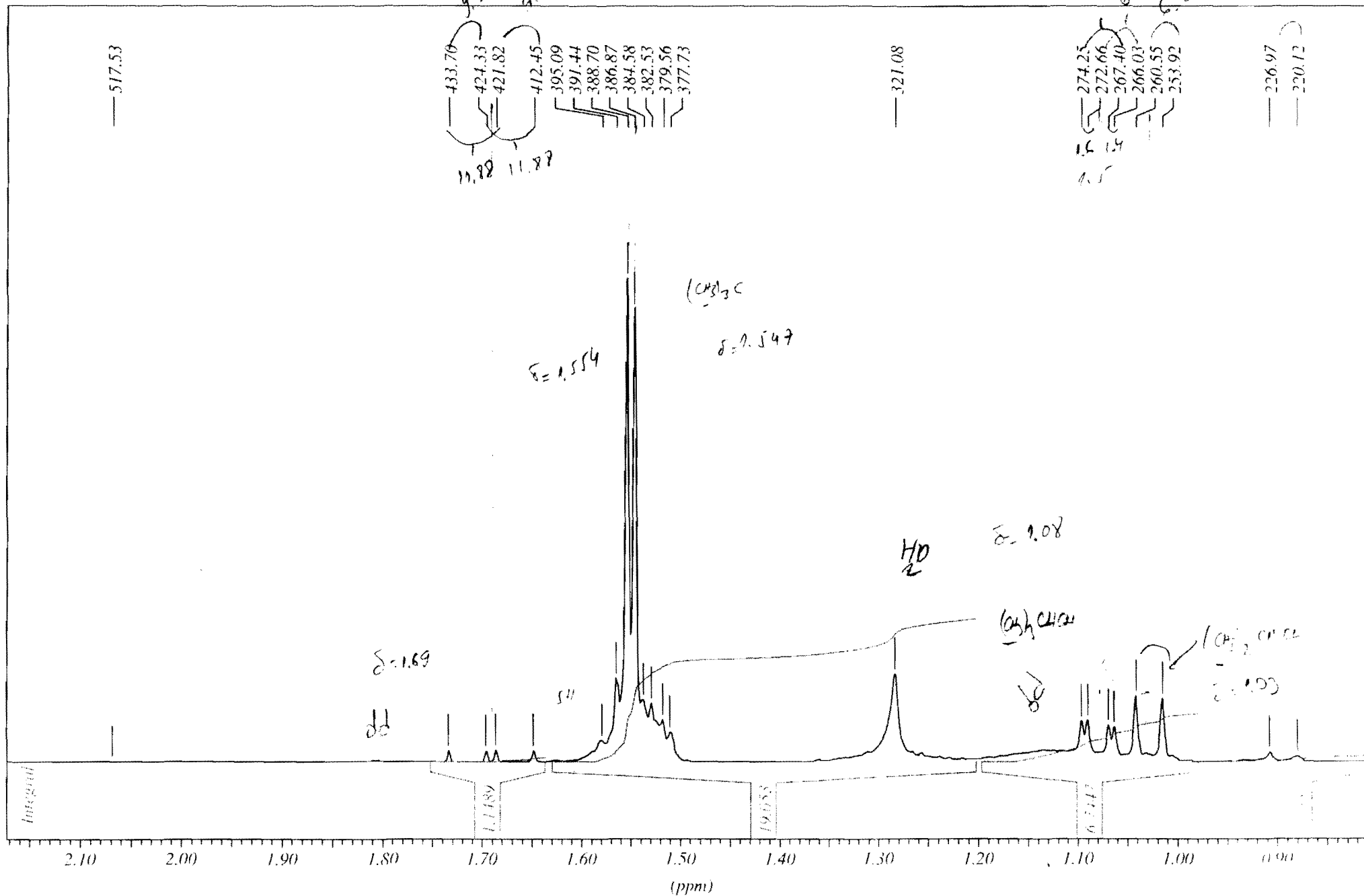


PV 73

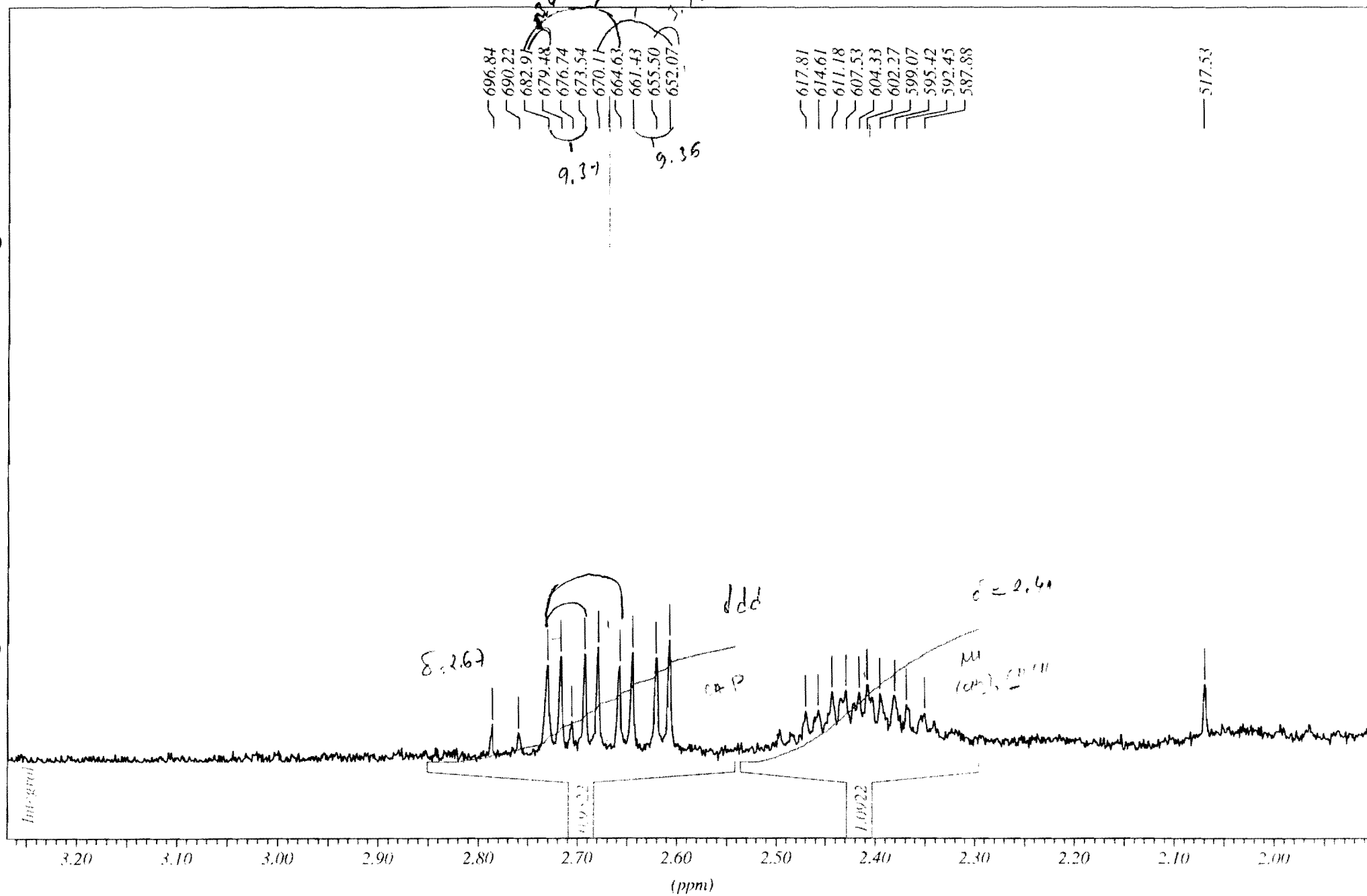




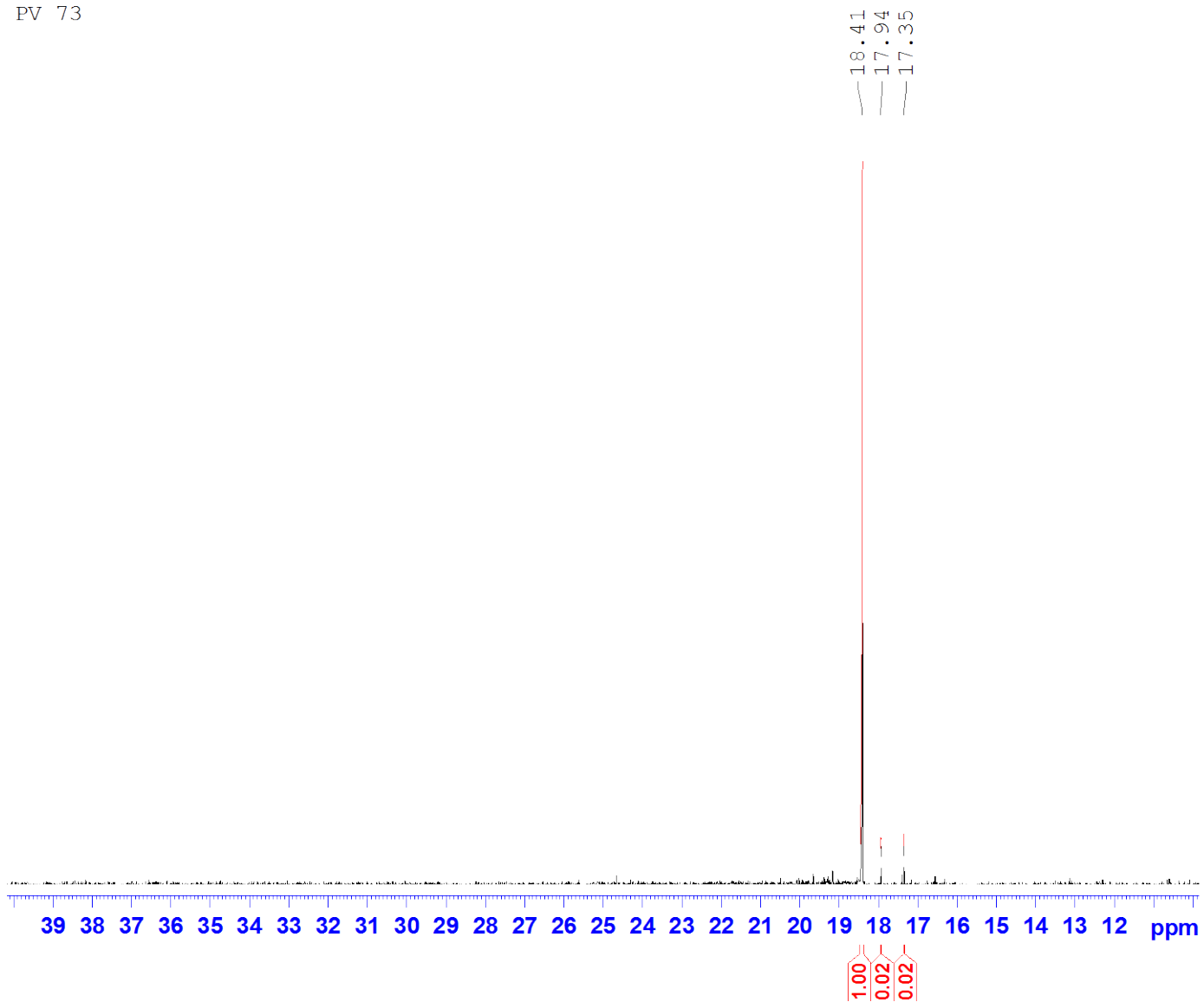
PV 73



PV 73



PV 73



Current Data Parameters  
NAME PV73  
EXPNO 60  
PROCNO 1

F2 - Acquisition Parameters  
Date\_ 991222  
Time\_ 10.49  
INSTRUM avance400  
PROBHD 5 mm Multinu  
PULPROG zgpg30  
TD 65536  
SOLVENT CDCl3  
NS 158  
DS 4  
SWH 40650.406 Hz  
FIDRES 0.620276 Hz  
AQ 0.8061428 sec  
RG 9195.2  
DE 12.300 usec  
DW 6.00 usec  
TE 300.0 K  
D1 2.00000000 sec  
d11 0.03000000 sec  
d12 0.00002000 sec

===== CHANNEL f1 =====  
NUC1 31P  
P1 15.50 usec  
PL1 -6.00 dB  
SFO1 161.9867313 MHz

===== CHANNEL f2 =====  
CPDPRG2 waltz16  
NUC2 1H  
PCPD2 100.00 usec  
PL2 3.00 dB  
PL12 22.00 dB  
PL13 24.00 dB  
SFO2 400.1316005 MHz

F2 - Processing parameters  
SI 32768  
SF 161.9753930 MHz  
WDW EM  
SSB 0  
LB 0.30 Hz  
GB 0  
PC 1.40

PV73 <sup>31</sup>P NMR spectrum