

Synthesis and Configuration Determination of All Enantiopure Stereoisomers of the Melatonin Receptor Ligand 4-Phenyl-2-propionamidotetralin using an Expedient Optical Resolution of 4-Phenyl-2-tetralone

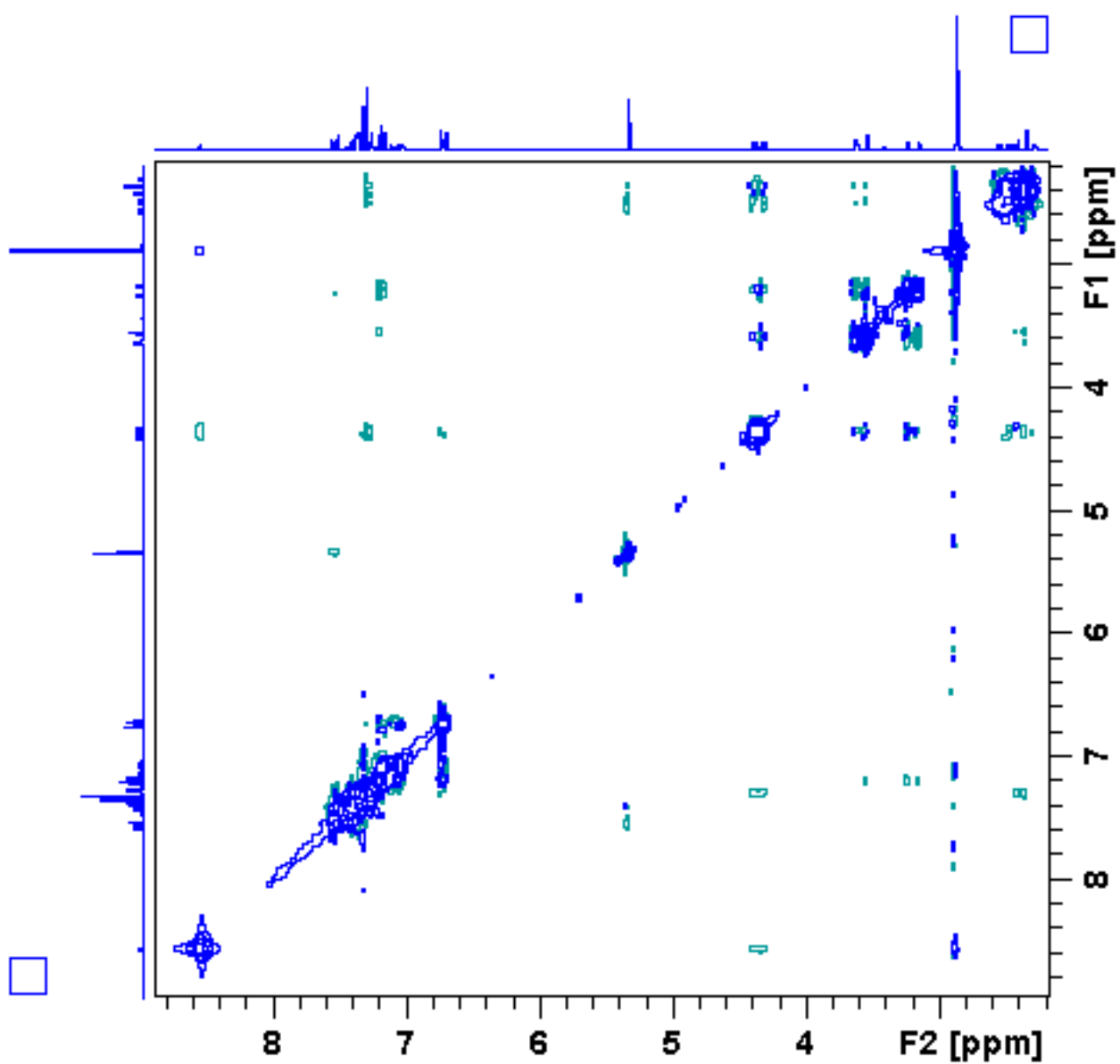
Simone Lucarini,^a Silvia Bartolucci,^a Annalida Bedini,^a Giuseppe Gatti,^a Pierfrancesco Orlando,^a Giovanni Piersanti,^a and Gilberto Spadoni*^a

^aDepartment of Biomolecular Sciences, University of Urbino "Carlo Bo", piazza Rinascimento 6, Urbino (PU), I-61029, Italy. Fax: +39 0722 303313; Tel: +39 0722 303322; E-mail: gilberto.spadoni@uniurb.it

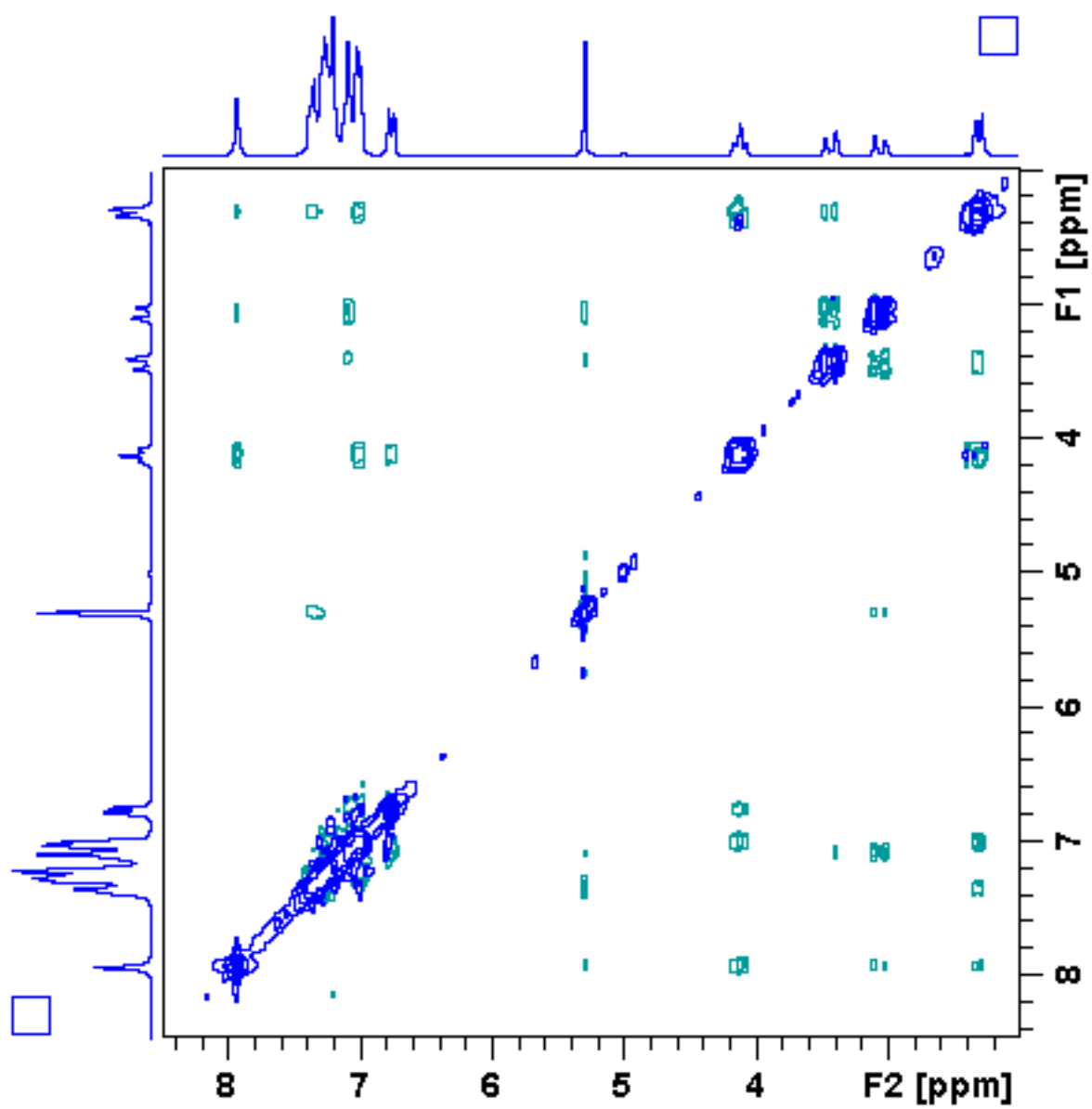
Experimental Supplementary Information

Table of contents		Pages
NOESY Spectrum of compound	6a	S2
	6b	S3
	6c	S4
	6d	S5
Chiral HPLC Chromatogram of	<i>cis</i> and <i>trans</i> mixture of (±)-1	S6
	(+)-(2<i>S</i>,4<i>S</i>)-1a	S7
	(-)-(2<i>R</i>,4<i>R</i>)-1b	S7
	(+)-(2<i>R</i>,4<i>S</i>)-1c	S8
	(-)-(2<i>S</i>,4<i>R</i>)-1d	S8

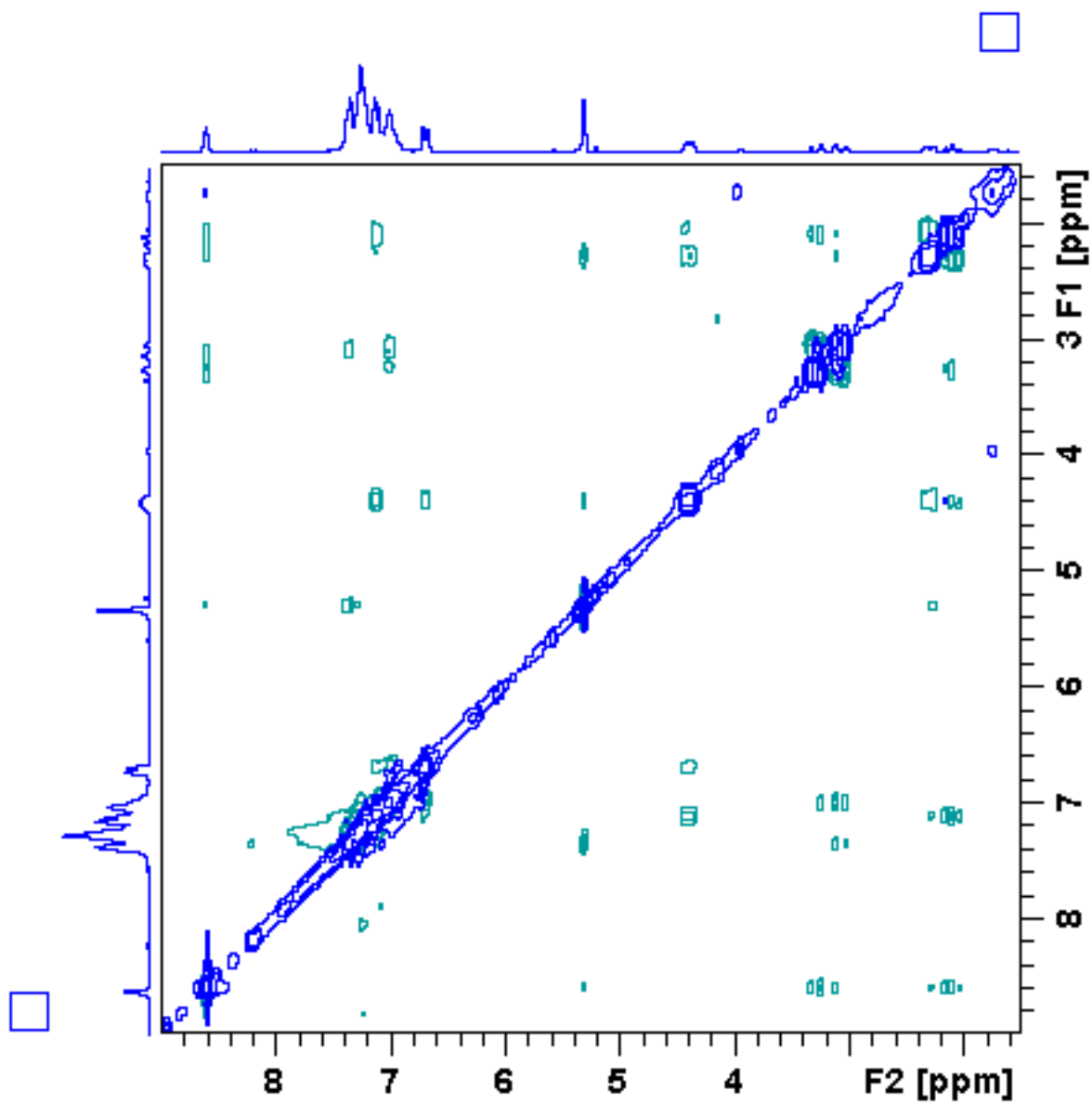
NOESY Spectrum of compound 6a



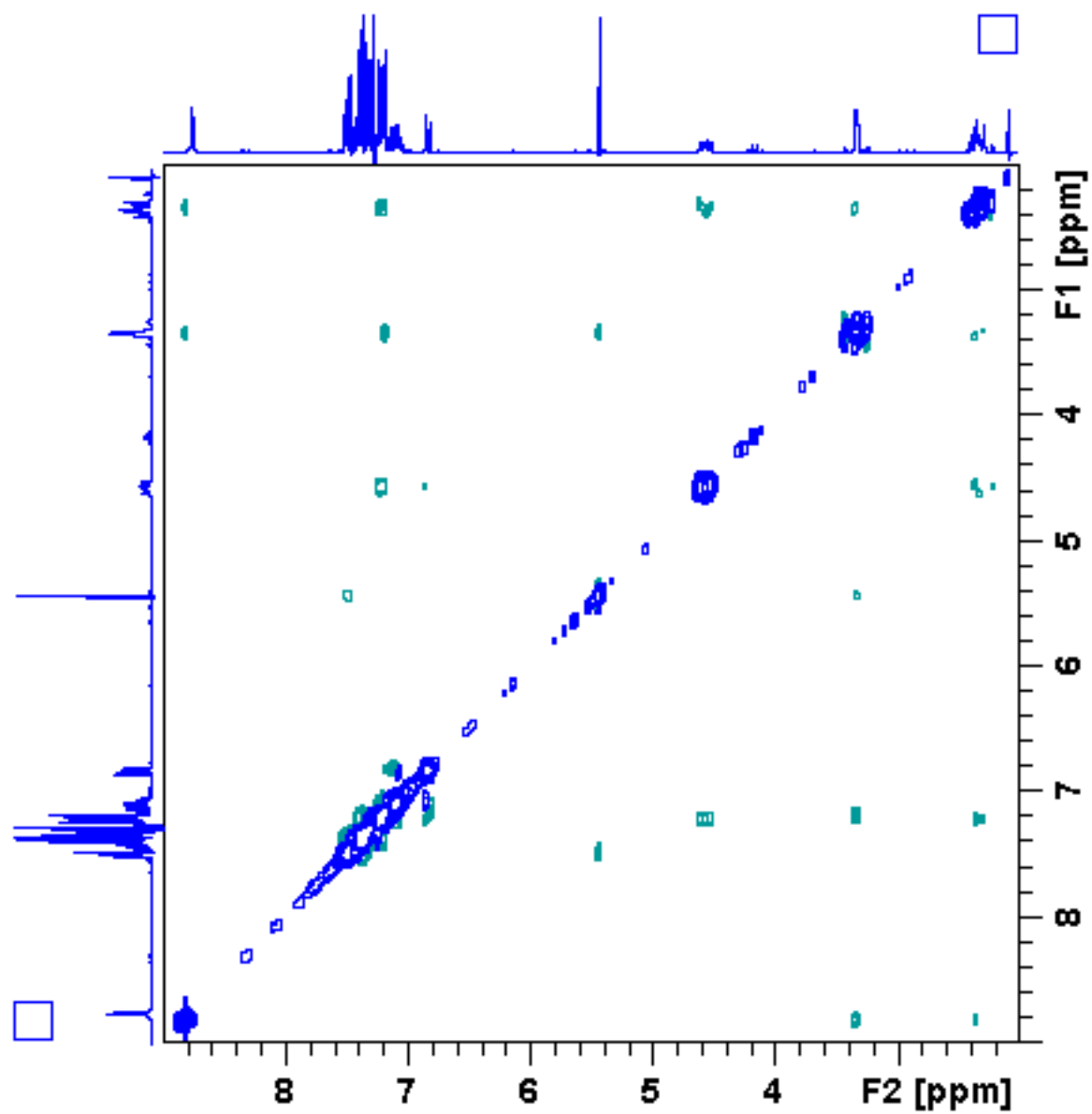
NOESY Spectrum of compound 6b



NOESY Spectrum of compound 6c

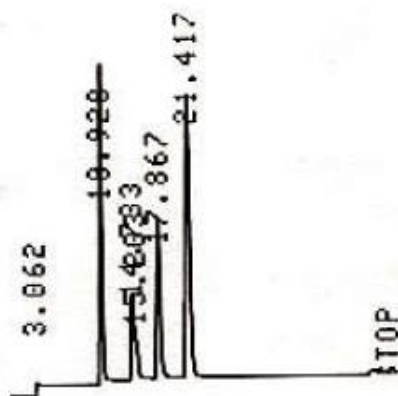


NOESY Spectrum of compound 6d



Chiral HPLC Chromatogram of *cis* and *trans* mixture of (±)-1

ATTEN(0)=5
A.SAVE
START



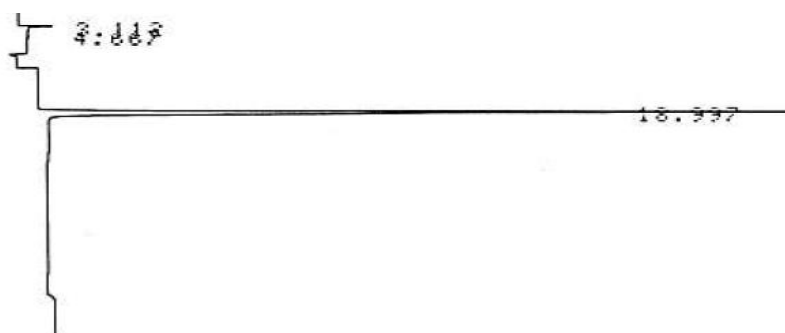
CHROMATOGRAM 1 MEMORIZED

CHROMATOPAC C-R3A
SAMPLE NO 0
REPORT NO 436

FILE 0
METHOD 41
NAME

PKNO	TIME	AREA	MK	IDNO	CONC	NAME
1	10.928	182913			25.0659	
2	14.733	67514			9.2519	
3	15.203	25639	V		3.5134	
4	17.867	148967			20.4139	
5	21.417	304698			41.7548	
TOTAL					729730	
					-----	100

Chiral HPLC Chromatogram of compound (+)-(2*S*,4*S*)-1a



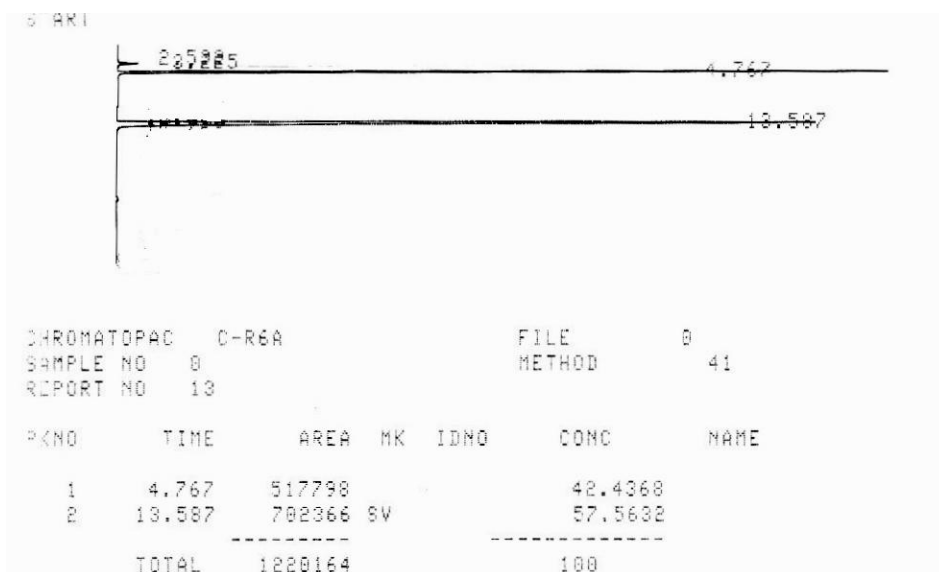
CHROMATOPAC	C-R3A	FILE	0			
SAMPLE NO	0	METHOD	41			
REPORT NO	469					
PKNO	TIME	AREA	MK	IDNO	CONC	NAME
1	3.112	19881			1.3361	
2	18.997	1468060			98.6639	
	TOTAL	1487940			100	

Chiral HPLC Chromatogram of compound (-)-(2*R*,4*R*)-1b



CHROMATOPAC	C-R3A	FILE	0			
SAMPLE NO	0	METHOD	41			
REPORT NO	471					
PKNO	TIME	AREA	MK	IDNO	CONC	NAME
1	3.255	26154			1.4947	
2	4.85	19323			1.1043	
3	21.277	1704344			97.401	
	TOTAL	1749822			100	

Chiral HPLC Chromatogram of compound (+)-(2*R*,4*S*)-1c



Chiral HPLC Chromatogram of compound (-)-(2*S*,4*R*)-1d

