

Supporting Information

Chemoenzymatic synthesis of a mixed phosphine-phosphine oxide catalyst and its application to asymmetric allylation of aldehydes and hydrogenation of alkenes

Derek. R. Boyd,* Mark Bell, Katherine Dunne, Brian Kelly, Paul J. Stevenson,* John F. Malone and Christopher C. R. Allen

School of Chemistry and Chemical Engineering, and School of Biological Sciences, Queen's University of

Belfast, Belfast BT9 5AG, UK

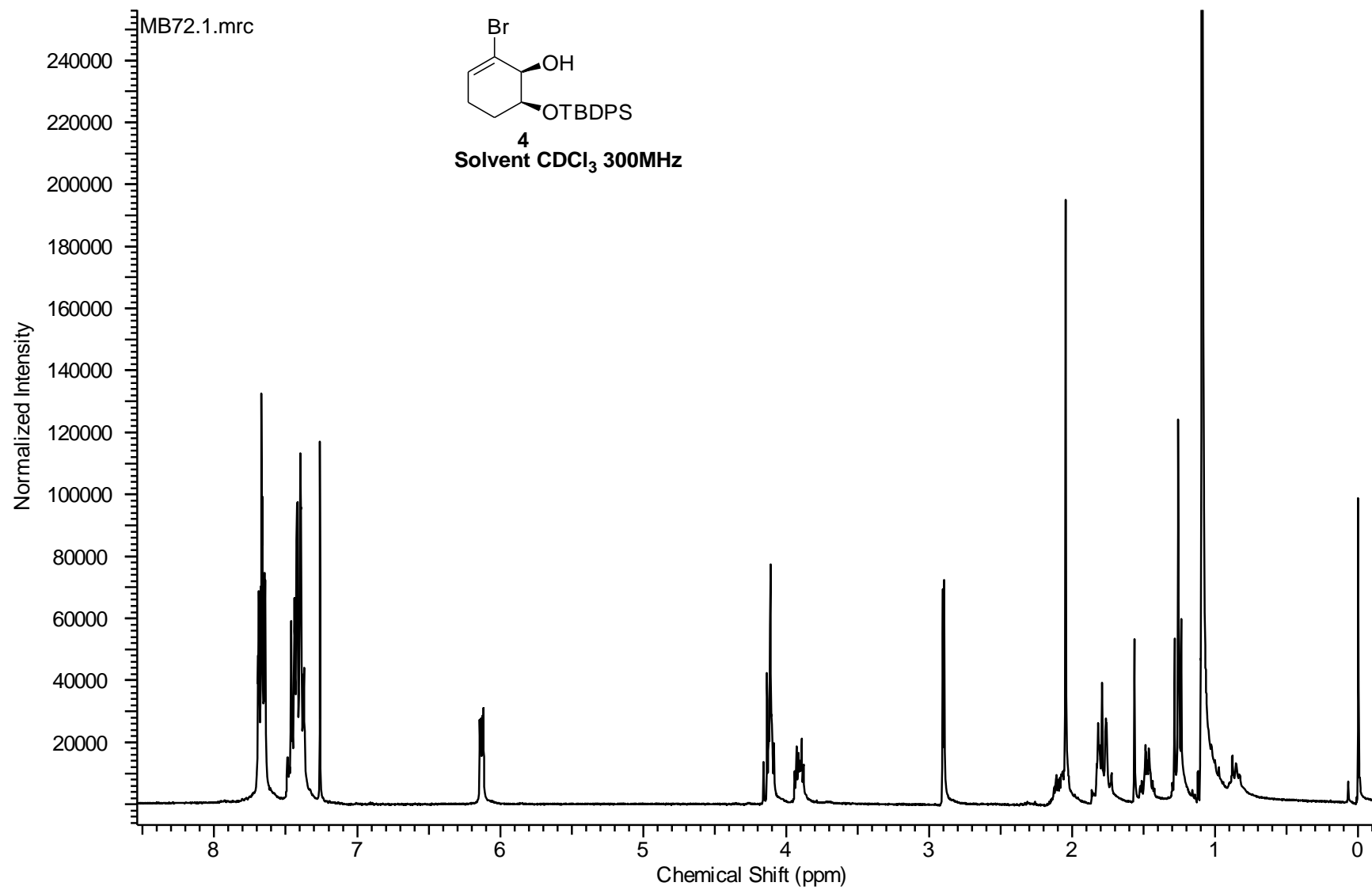
dr.boyd@qub.ac.uk

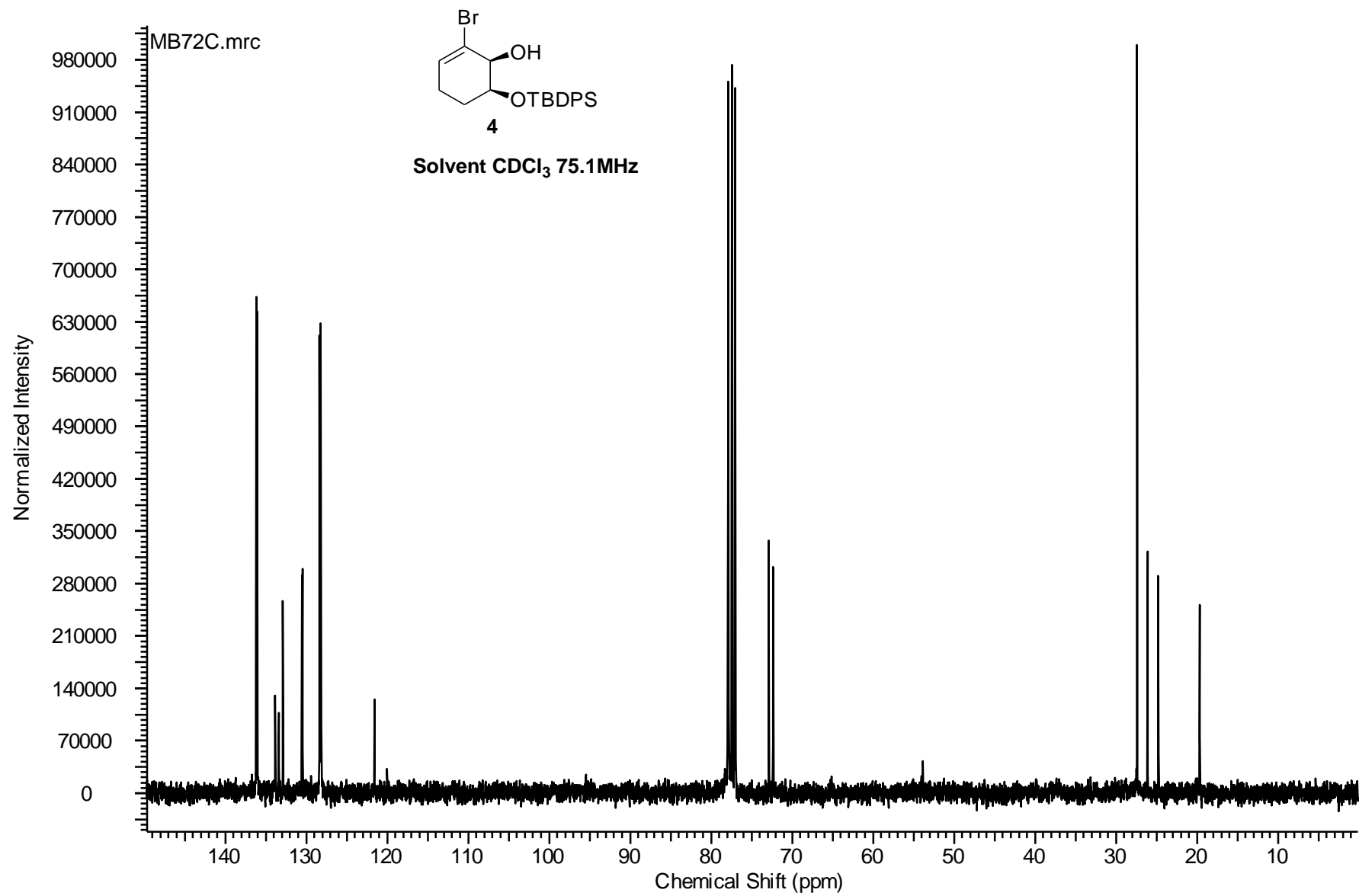
p.stevenson@qub.ac.uk

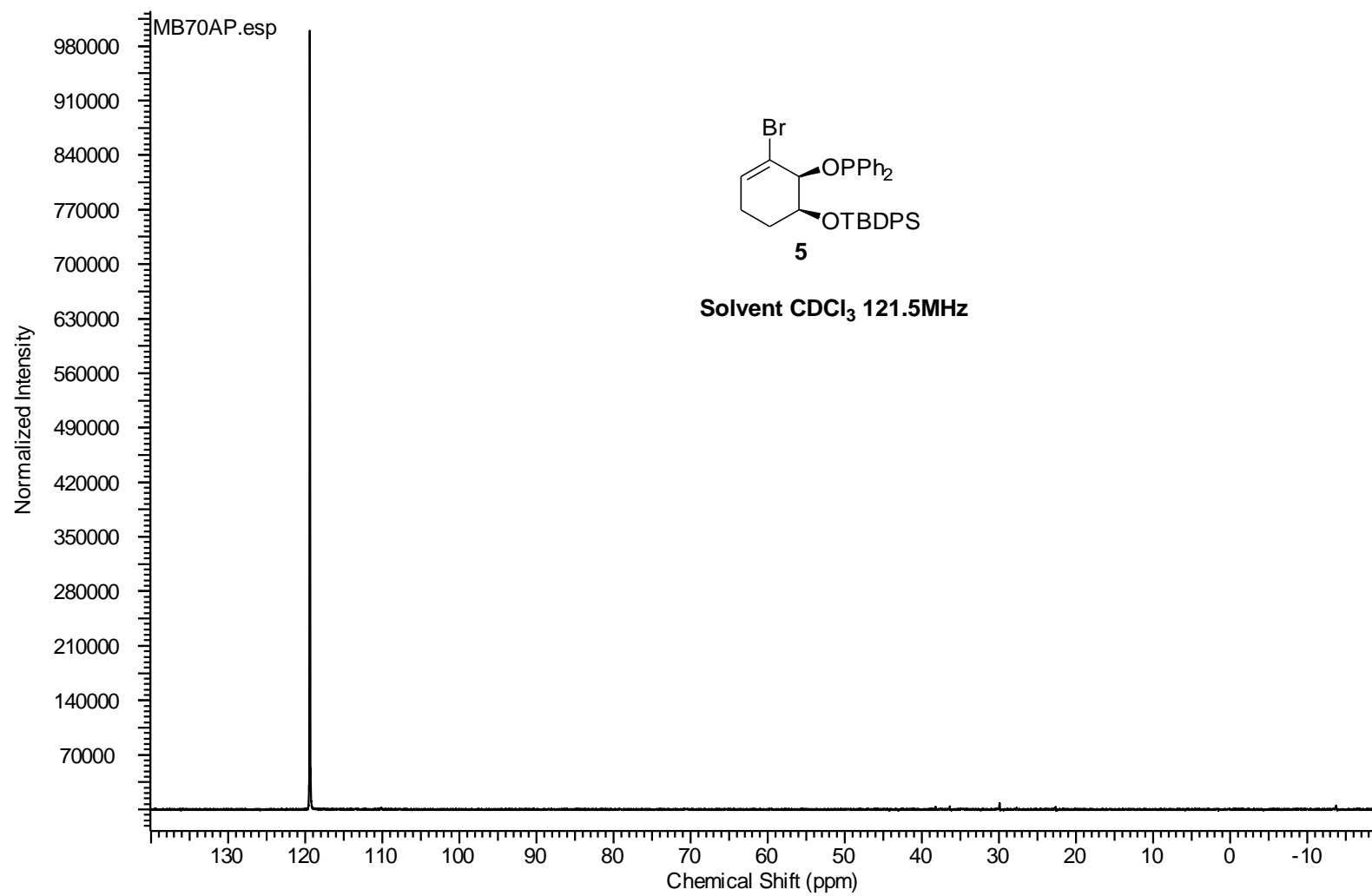
Index of Spectra

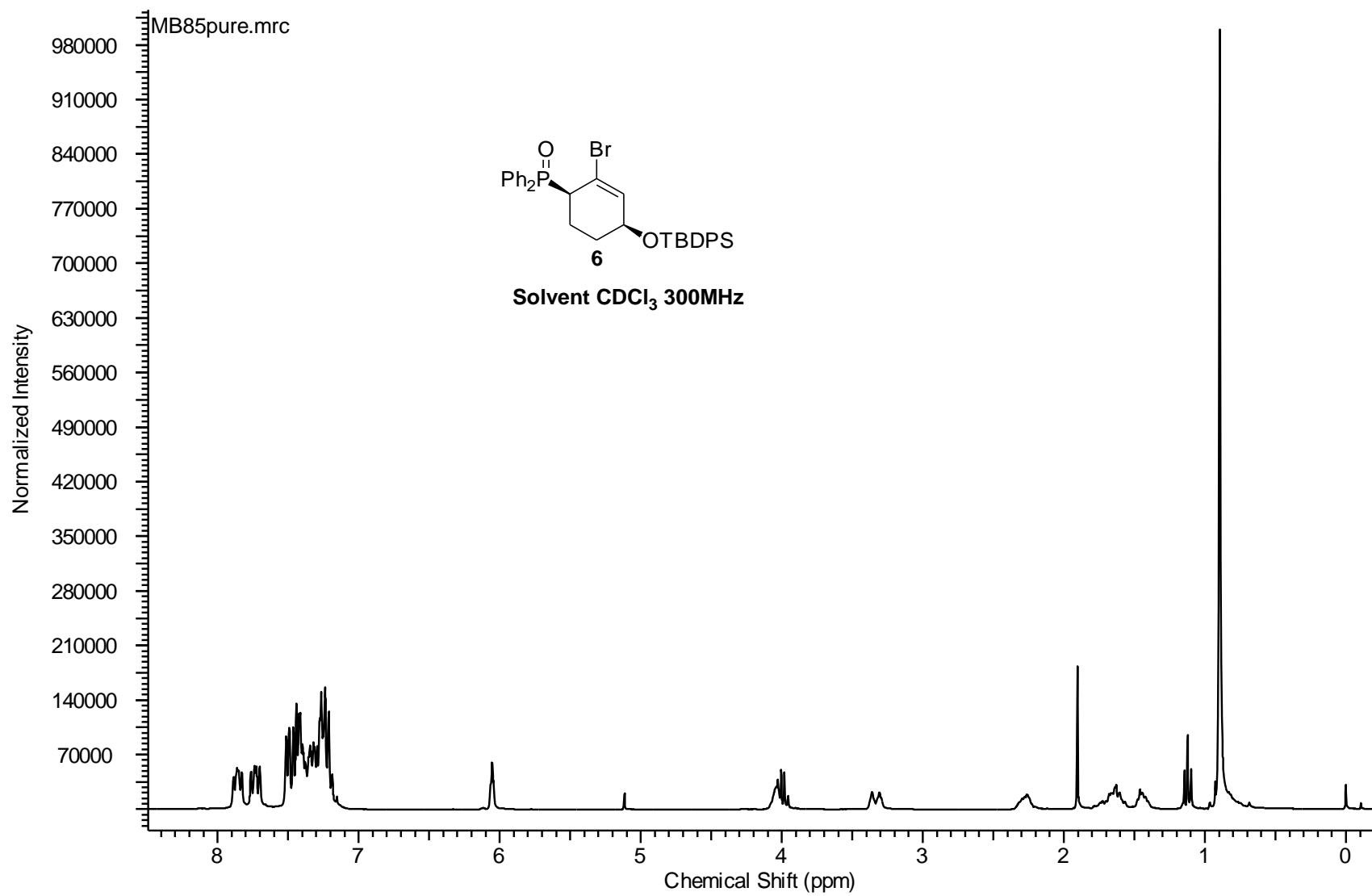
Copy of ¹ H NMR spectrum of compound 4	3
Copy of ¹³ C NMR spectra of compound 4	4
Copy of ³¹ P NMR spectra of compound 5	5
Copy of ¹ H NMR spectrum of compound 6	6
Copy of ¹³ C NMR spectra of compound 6	7
Copy of ³¹ P NMR spectra of compound 6	8
Copy of ¹ H NMR spectrum of compound 9	9
Copy of ¹³ C NMR spectra of compound 9	10
Copy of ³¹ P NMR spectra of compound 9	11
Copy of ¹ H NMR spectrum of compound 10	12
Copy of ¹³ C NMR spectra of compound 10	13
Copy of ³¹ P NMR spectra of compound 10	14
Copy of ¹ H NMR spectrum of compound 11	15
Copy of ¹³ C NMR spectra of compound 11	16
Copy of ³¹ P NMR spectra of compound 11	17
Copy of ¹ H NMR spectrum of compound 12	18
Copy of ¹³ C NMR spectra of compound 12	19
Copy of ³¹ P NMR spectra of compound 12	20
Copy of ¹ H NMR spectrum of compound 14	21
Copy of ¹³ C NMR spectra of compound 14	22
Copy of ³¹ P NMR spectra of compound 14	23
Copy of ¹ H NMR spectrum of compound 15	24
Copy of ¹³ C NMR spectra of compound 15	25
Copy of ³¹ P NMR spectra of compound 15	26
Copy of ³¹ P NMR spectrum of compound 7	27
Copy of ¹ H NMR spectrum of compound 7	28
Copy of ¹ H NMR spectrum of compound 17b	29

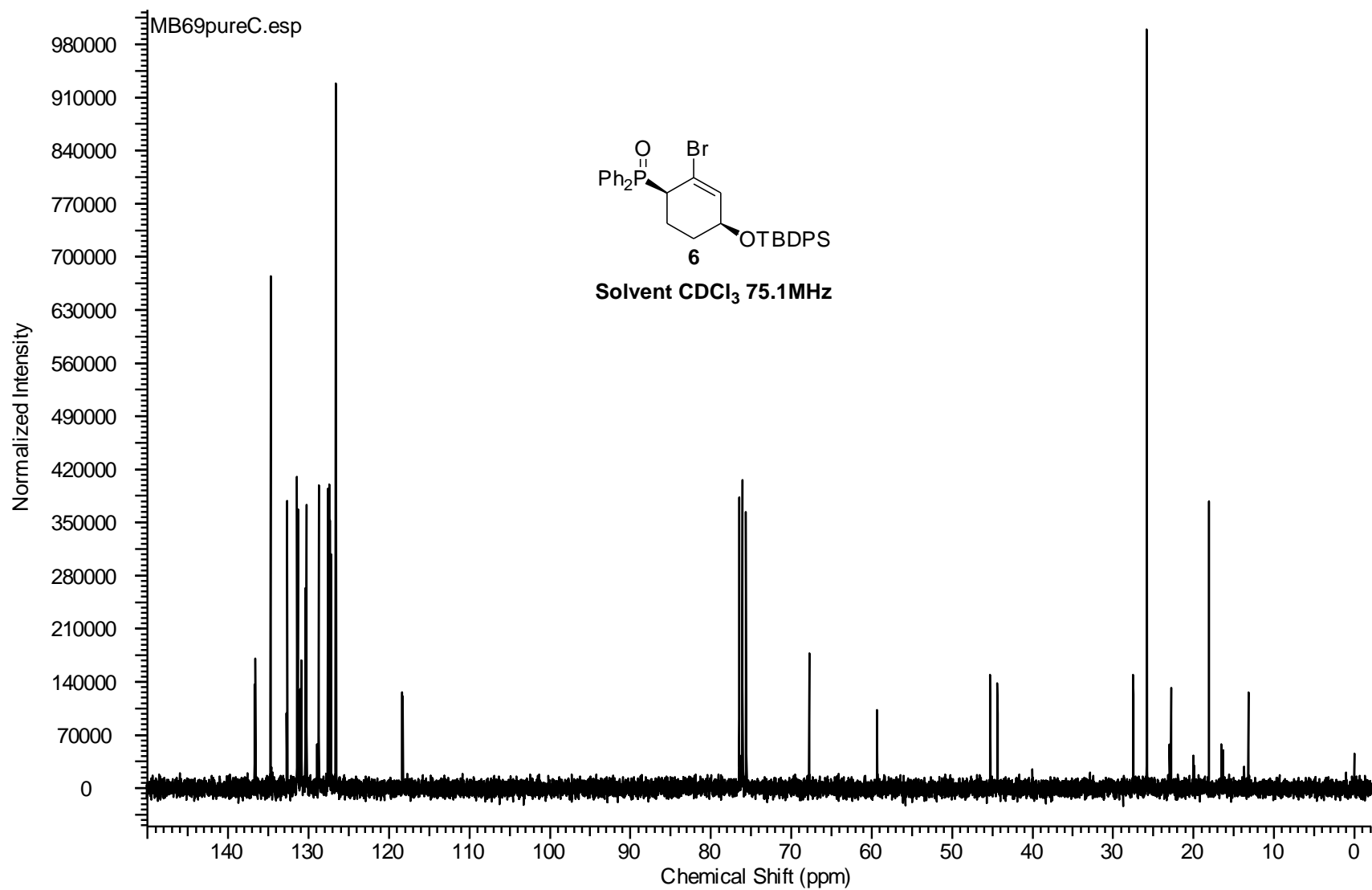
Copy of ^1H NMR spectrum of compound 17c	30
Copy of ^1H NMR spectrum of compound 17d	31
Copy of ^1H NMR spectrum of compound 17e	32
Copy of ^1H NMR spectrum of compound 17f	33

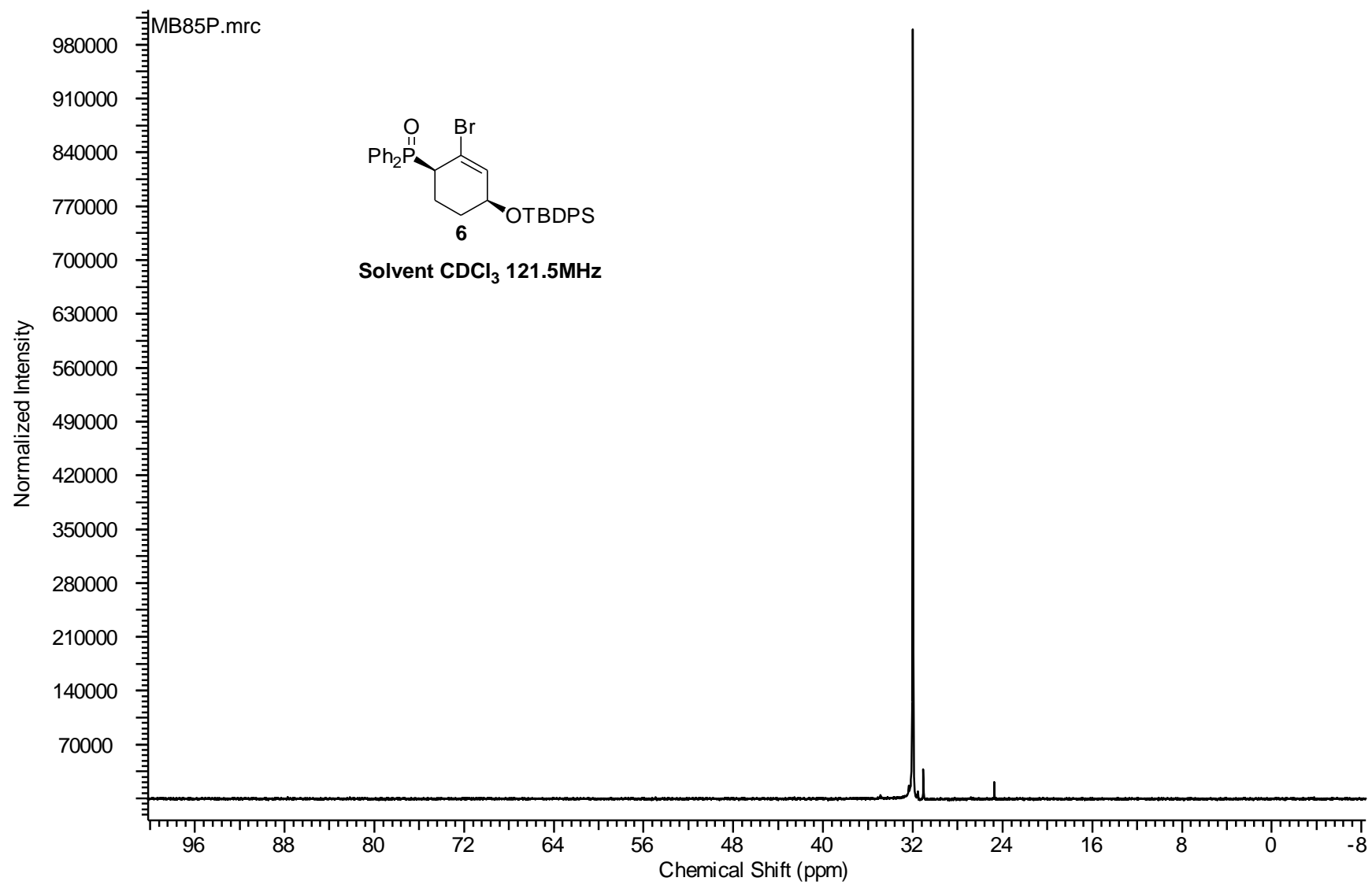


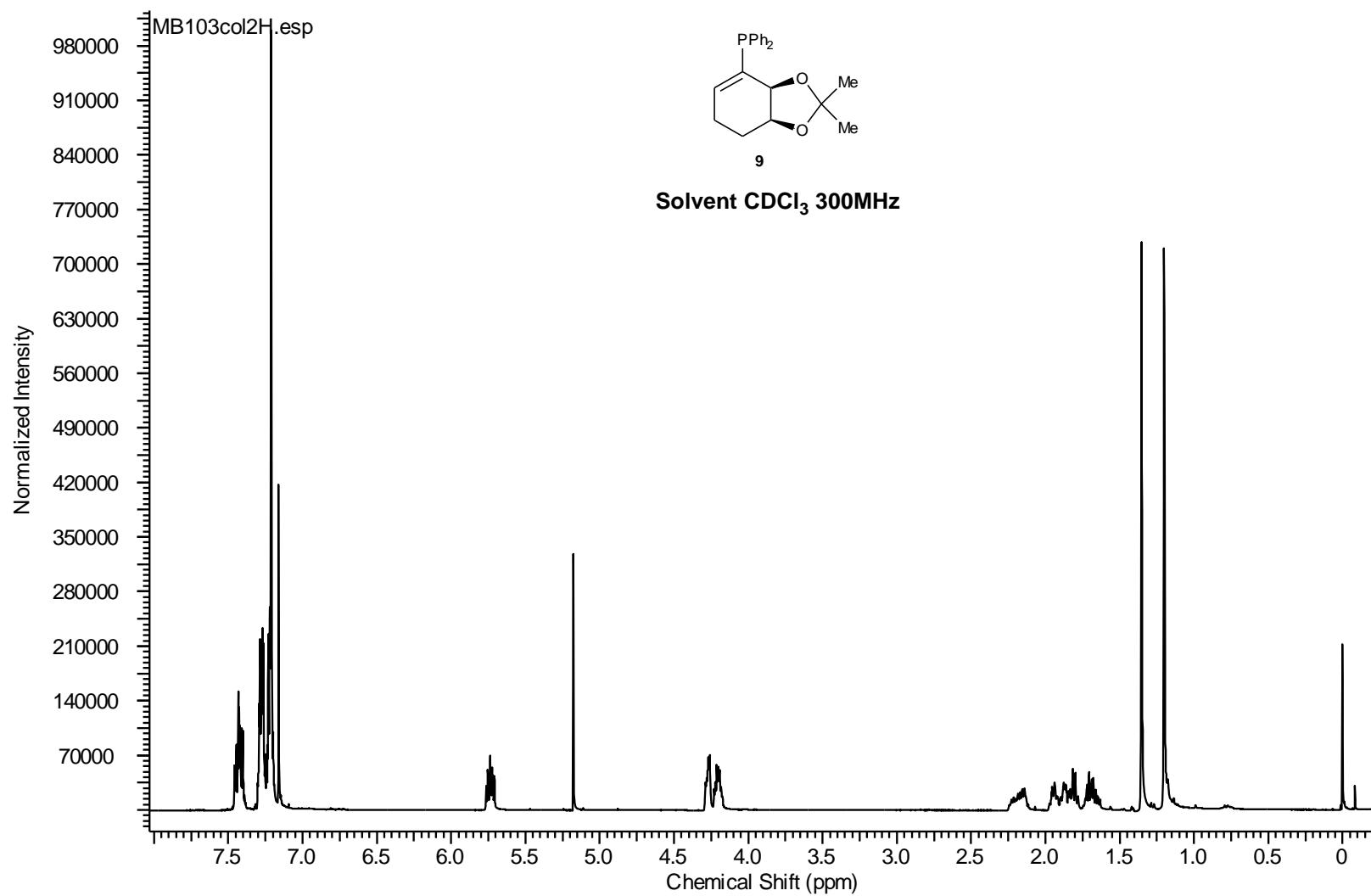


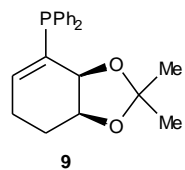




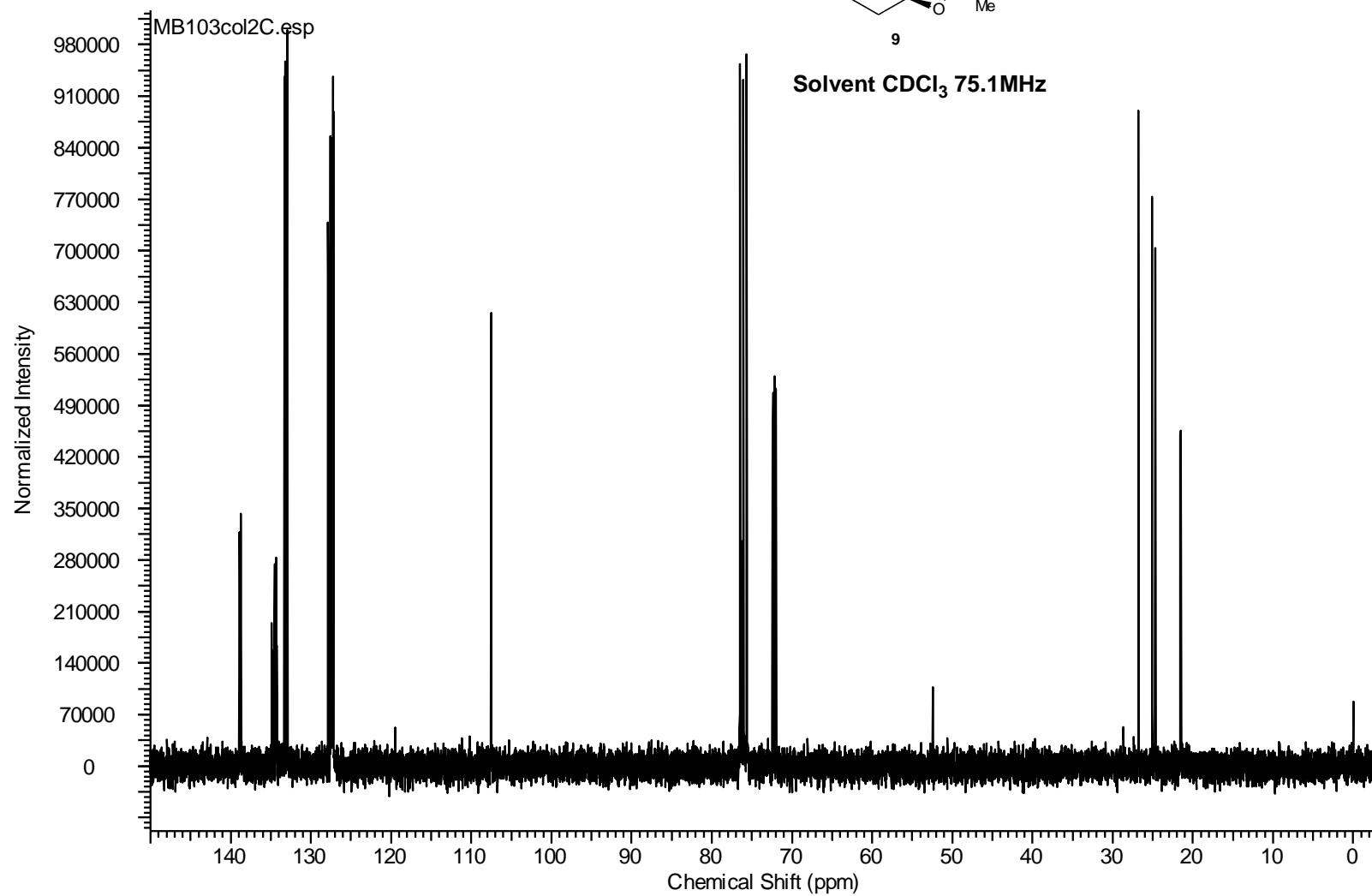


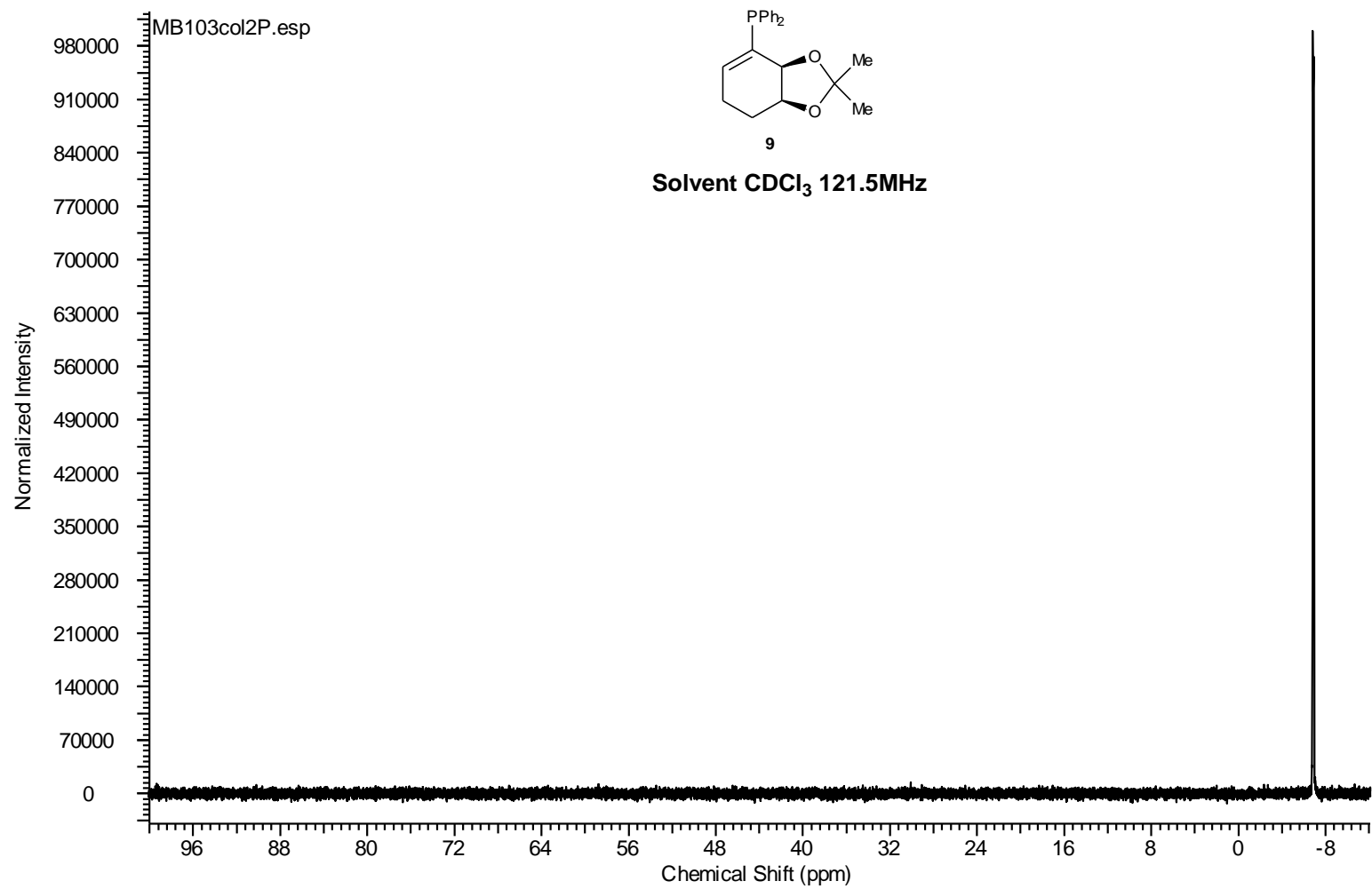


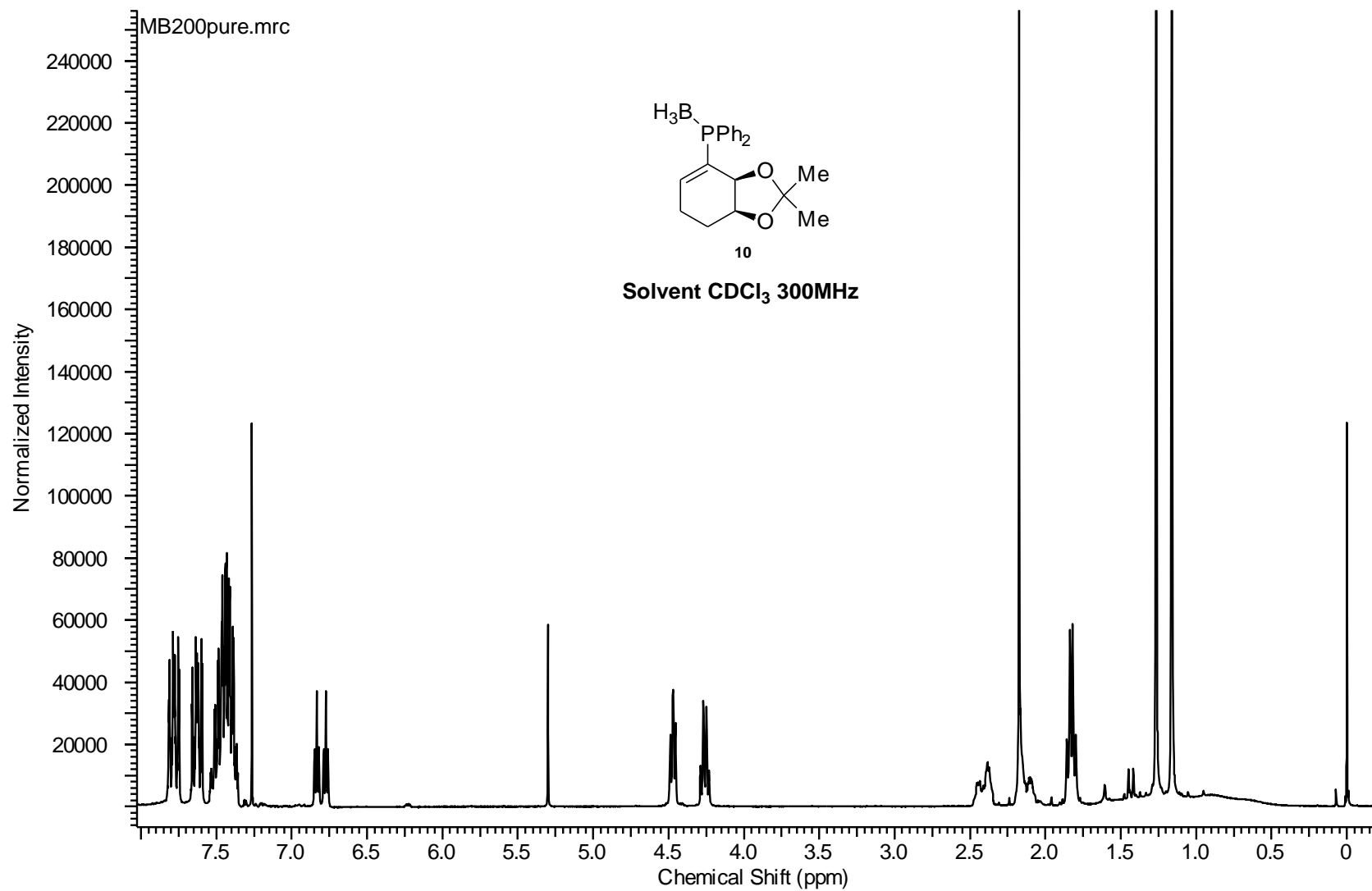


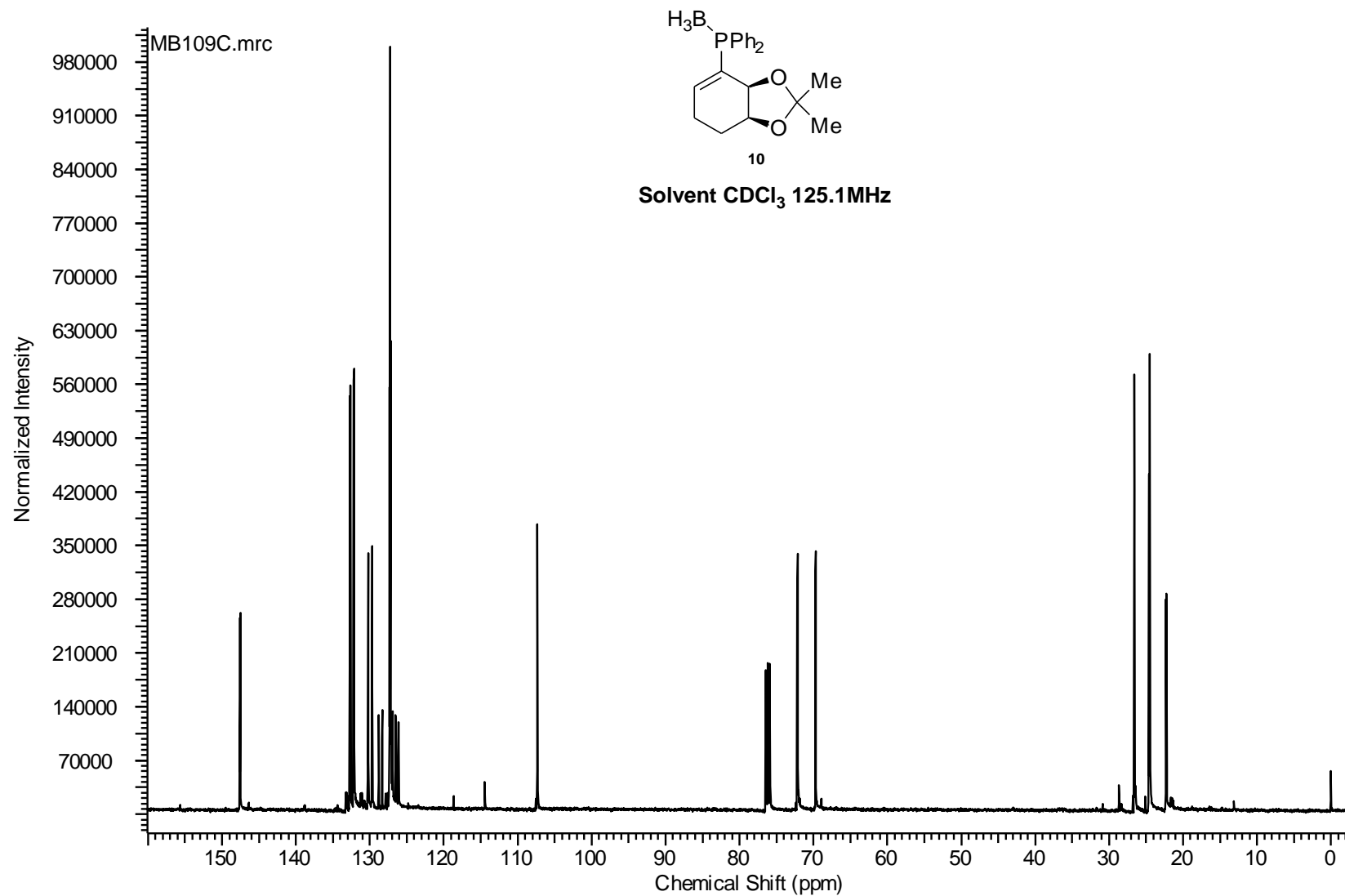


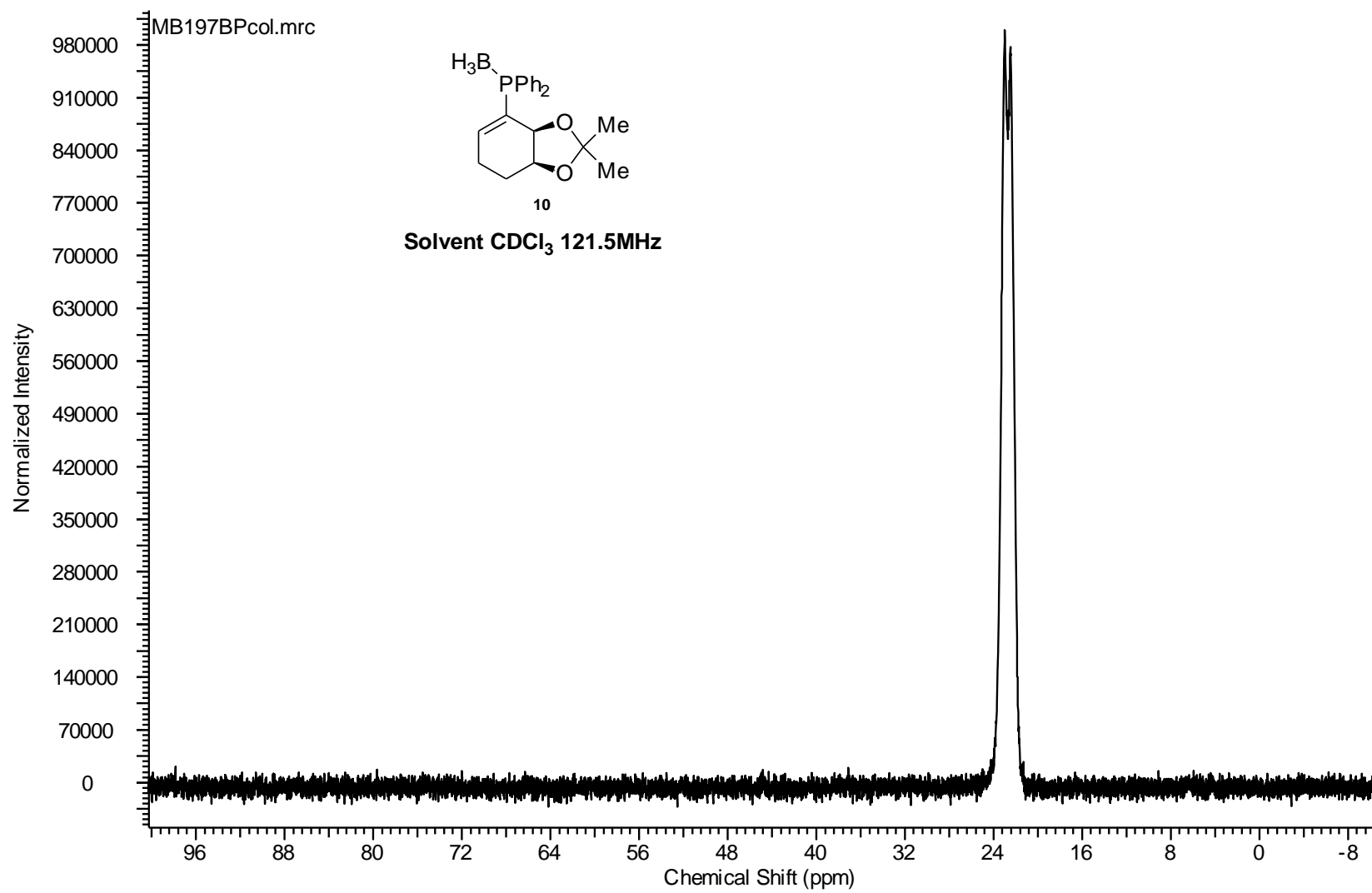
Solvent CDCl₃ 75.1MHz

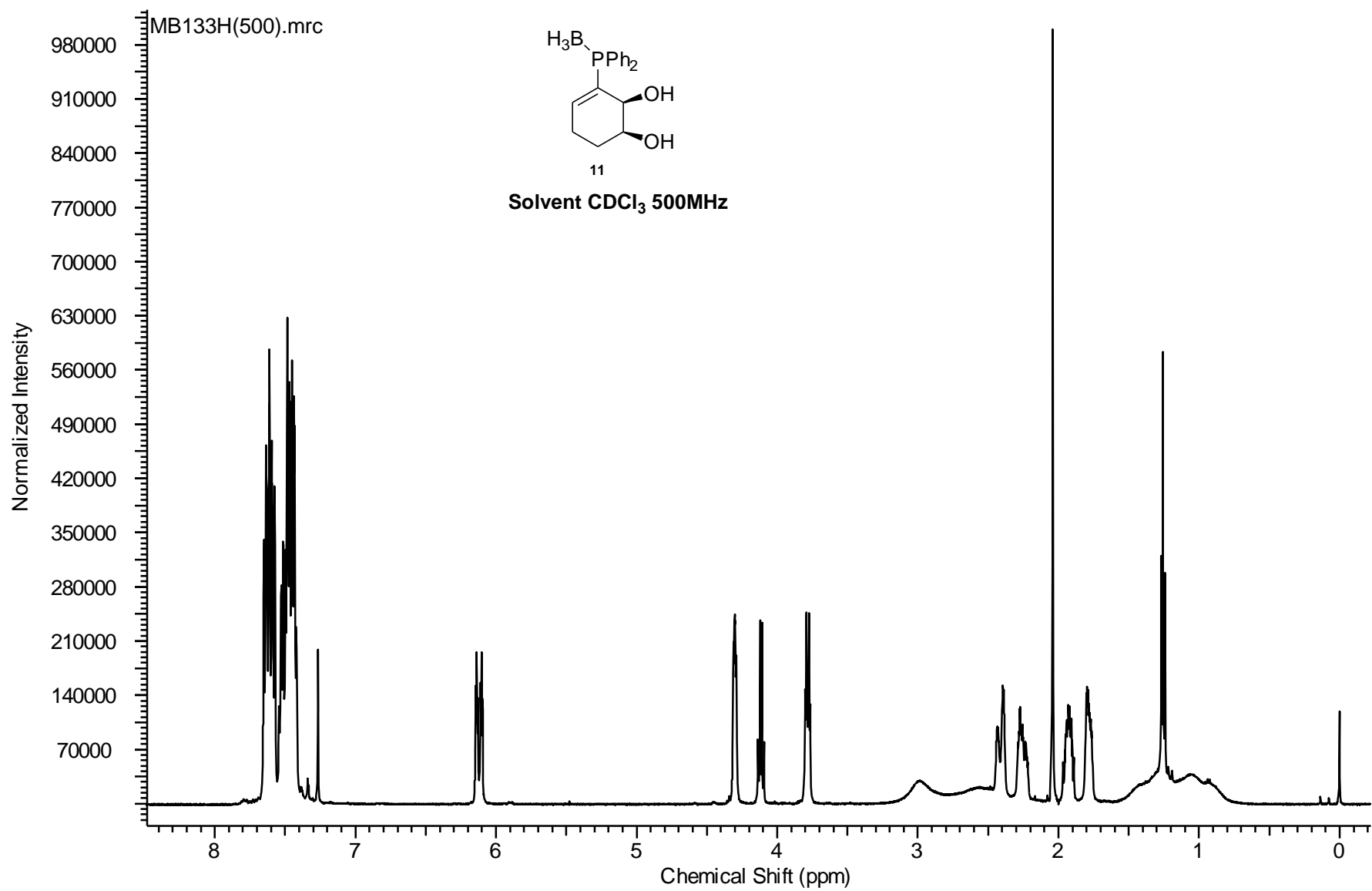


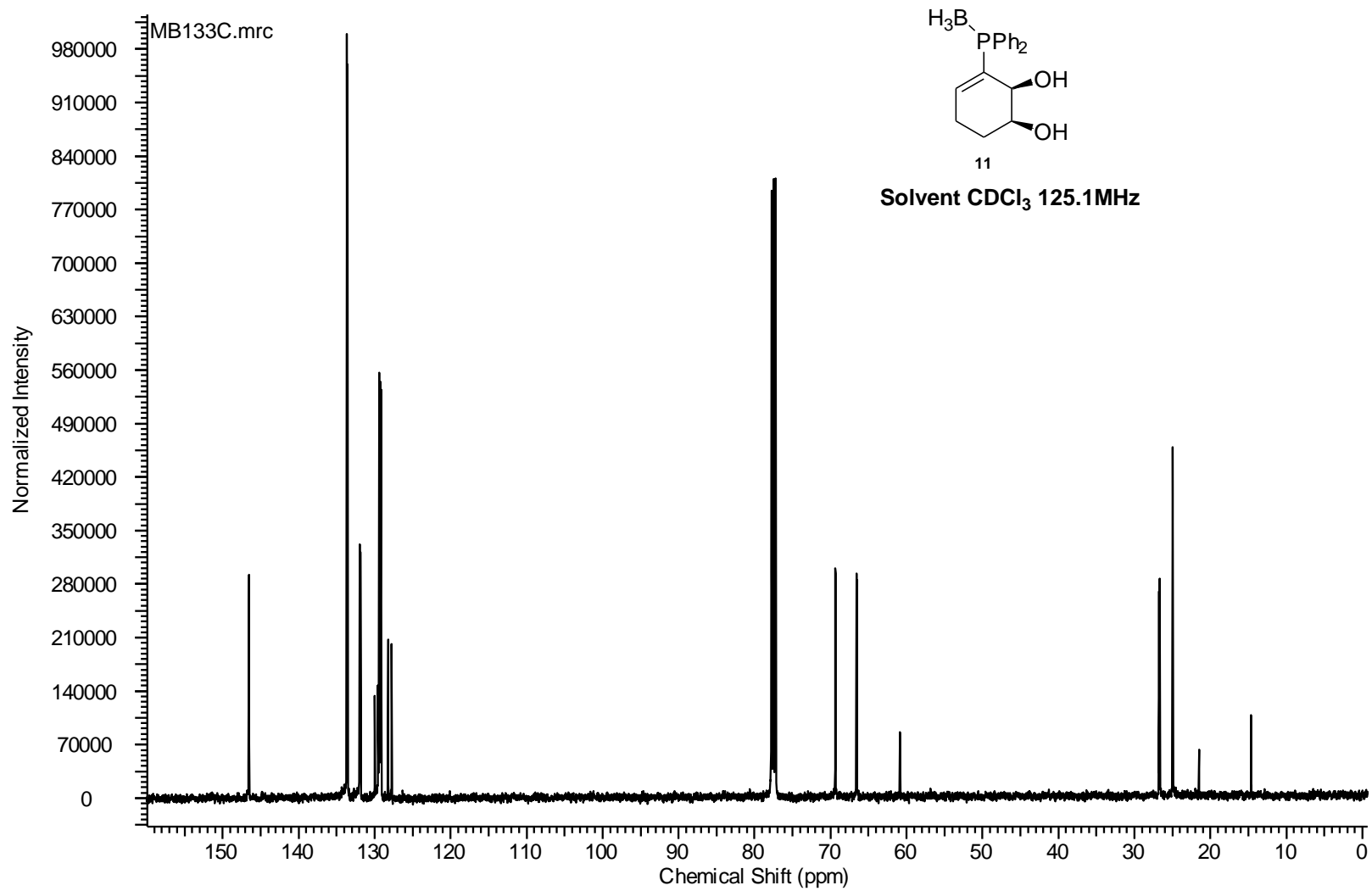


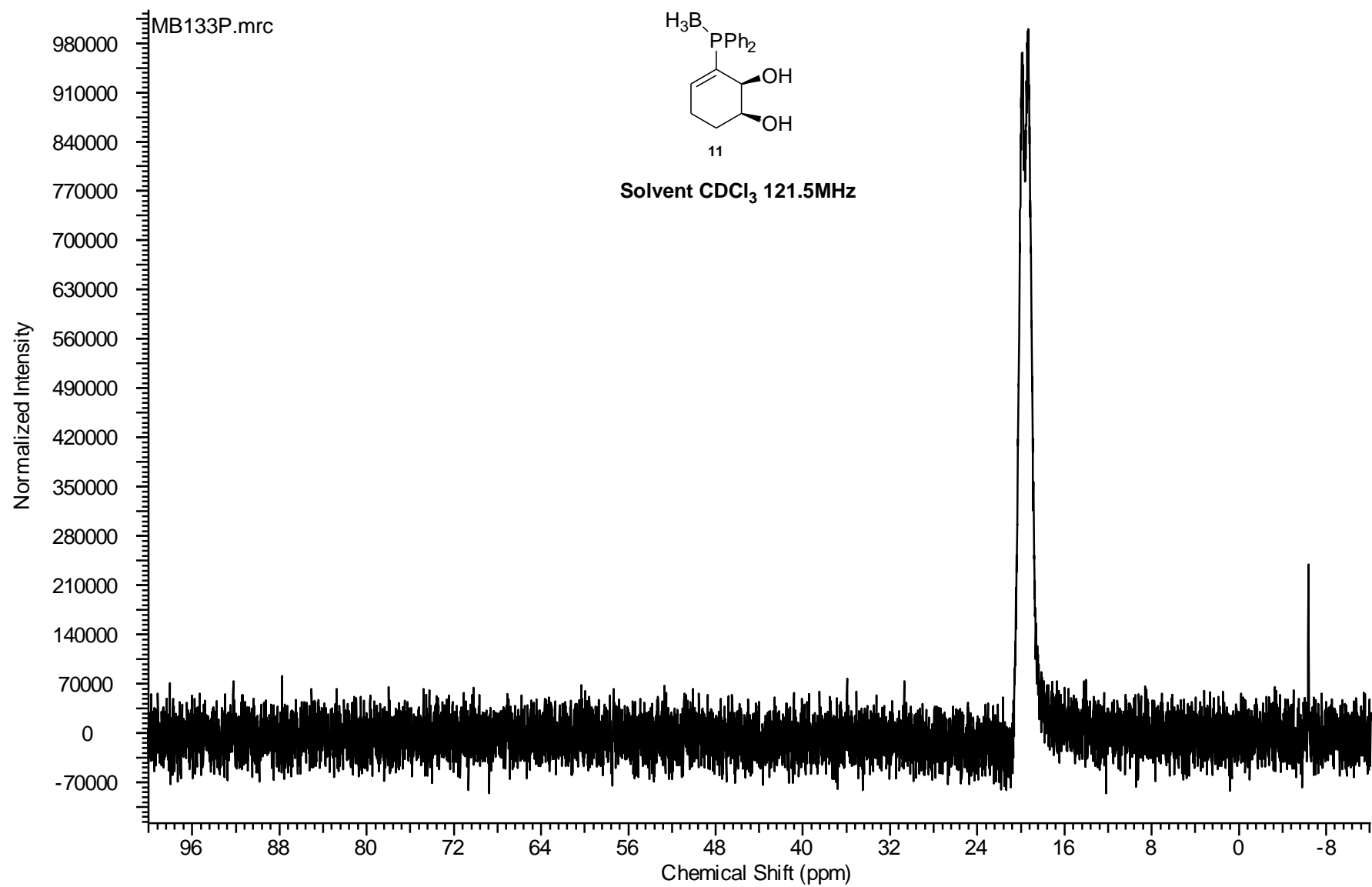


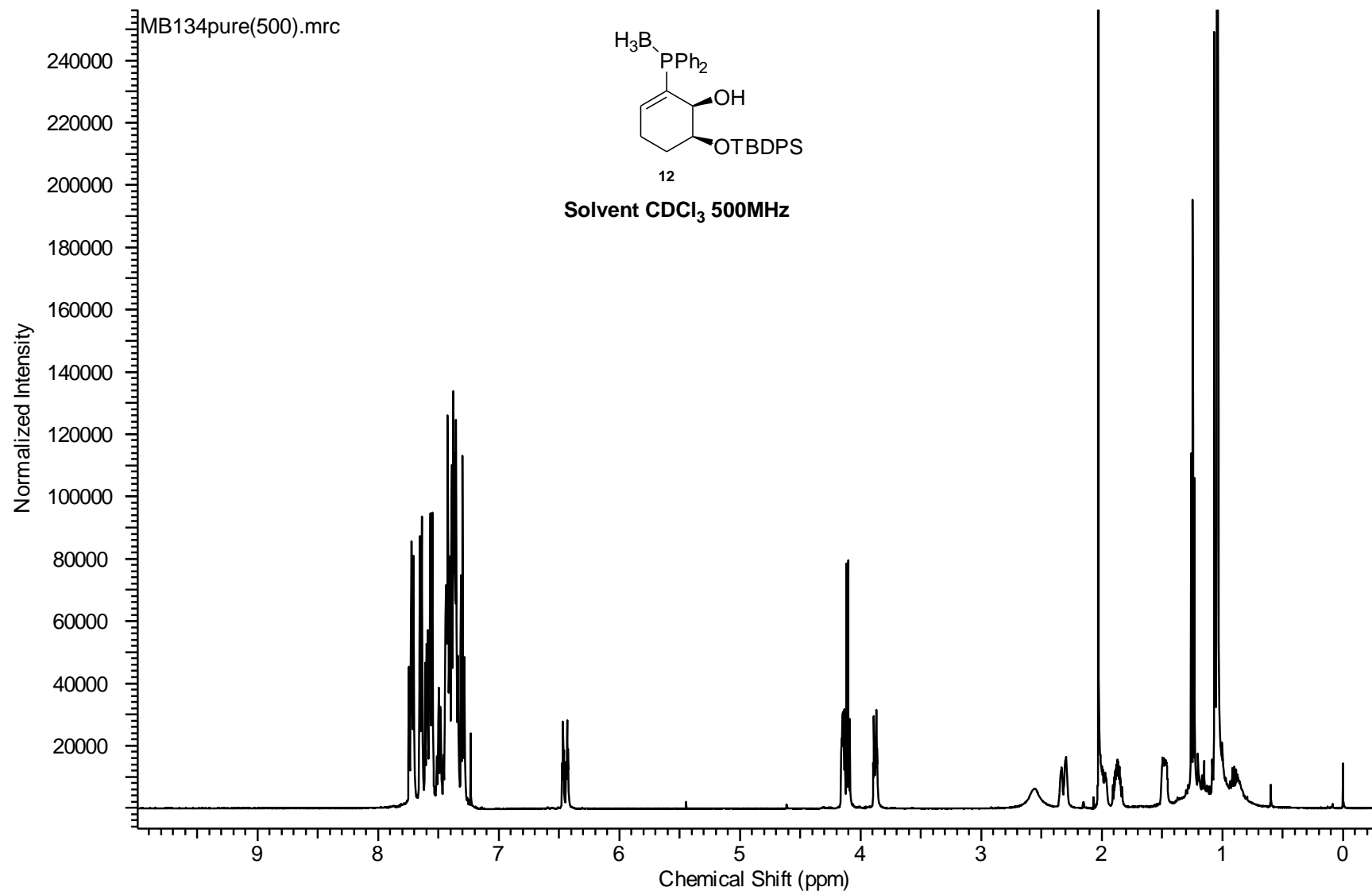


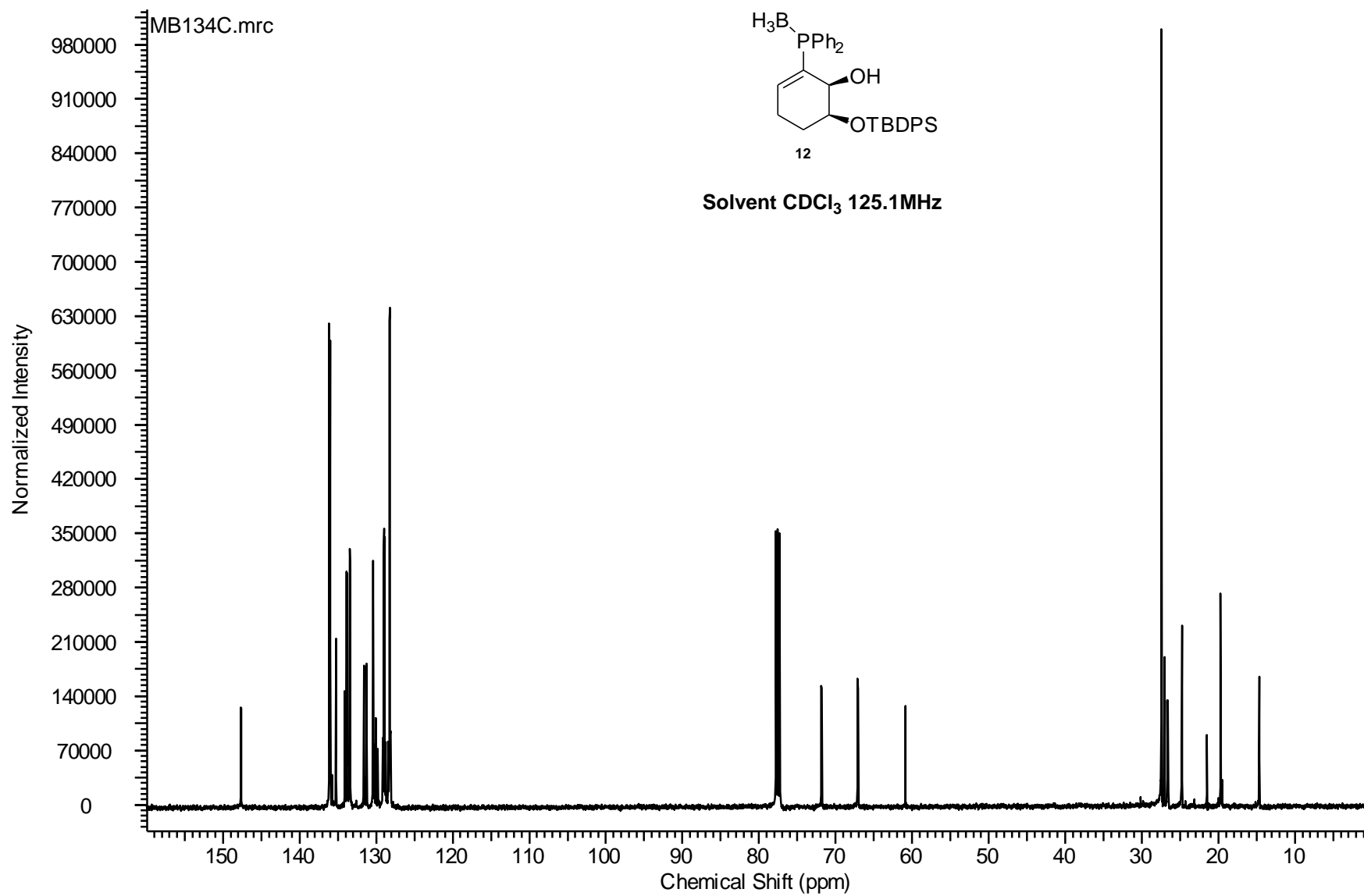


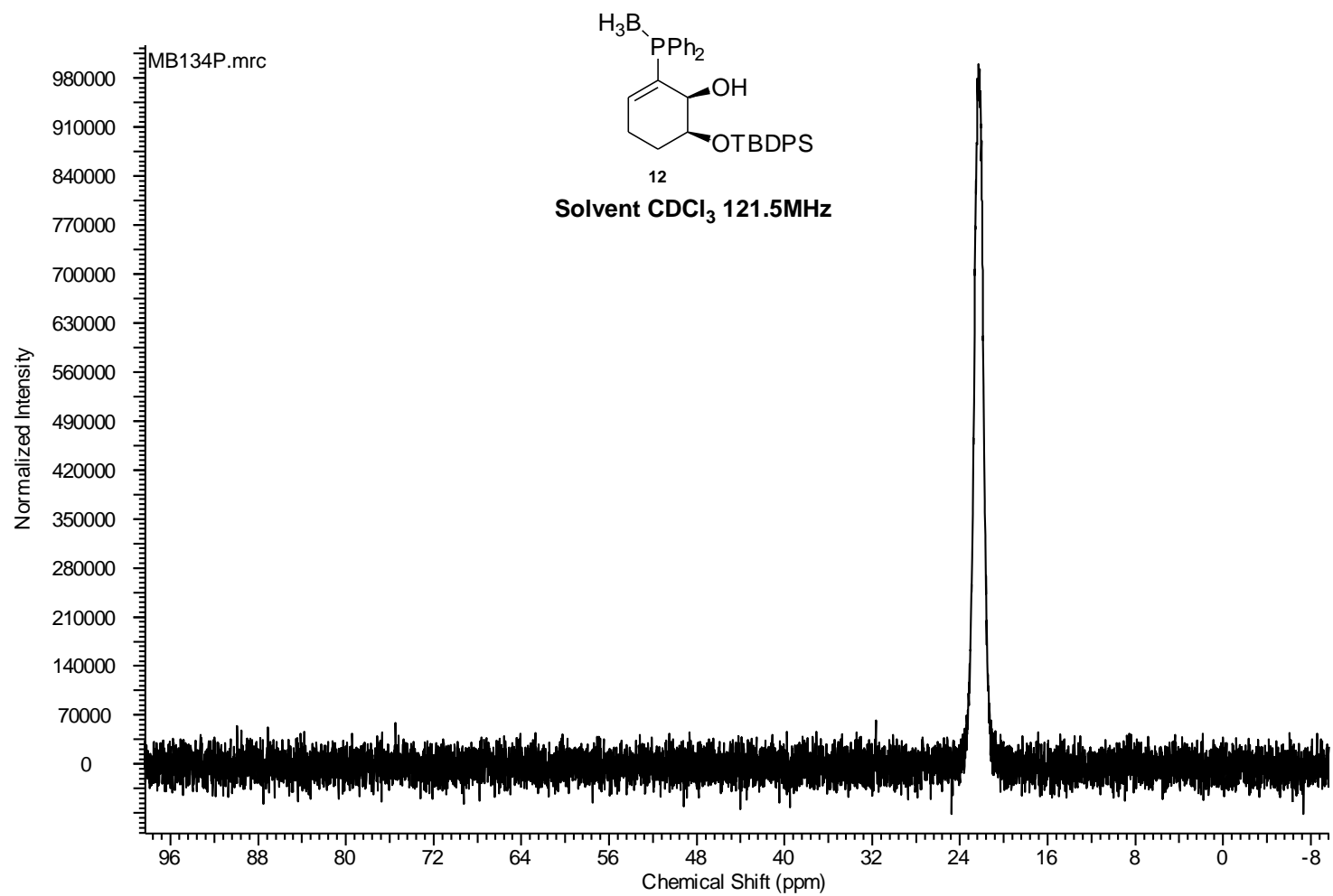


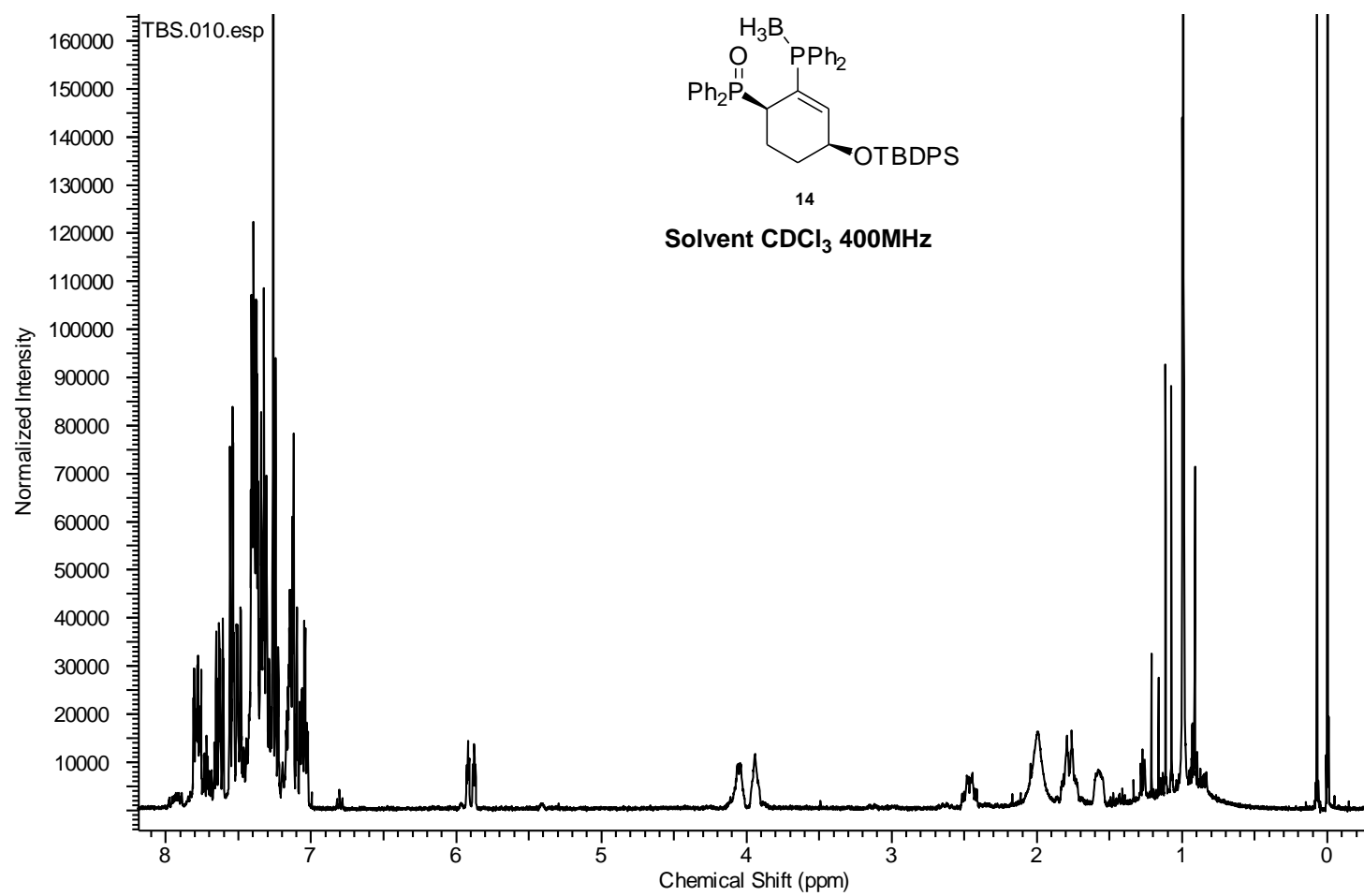


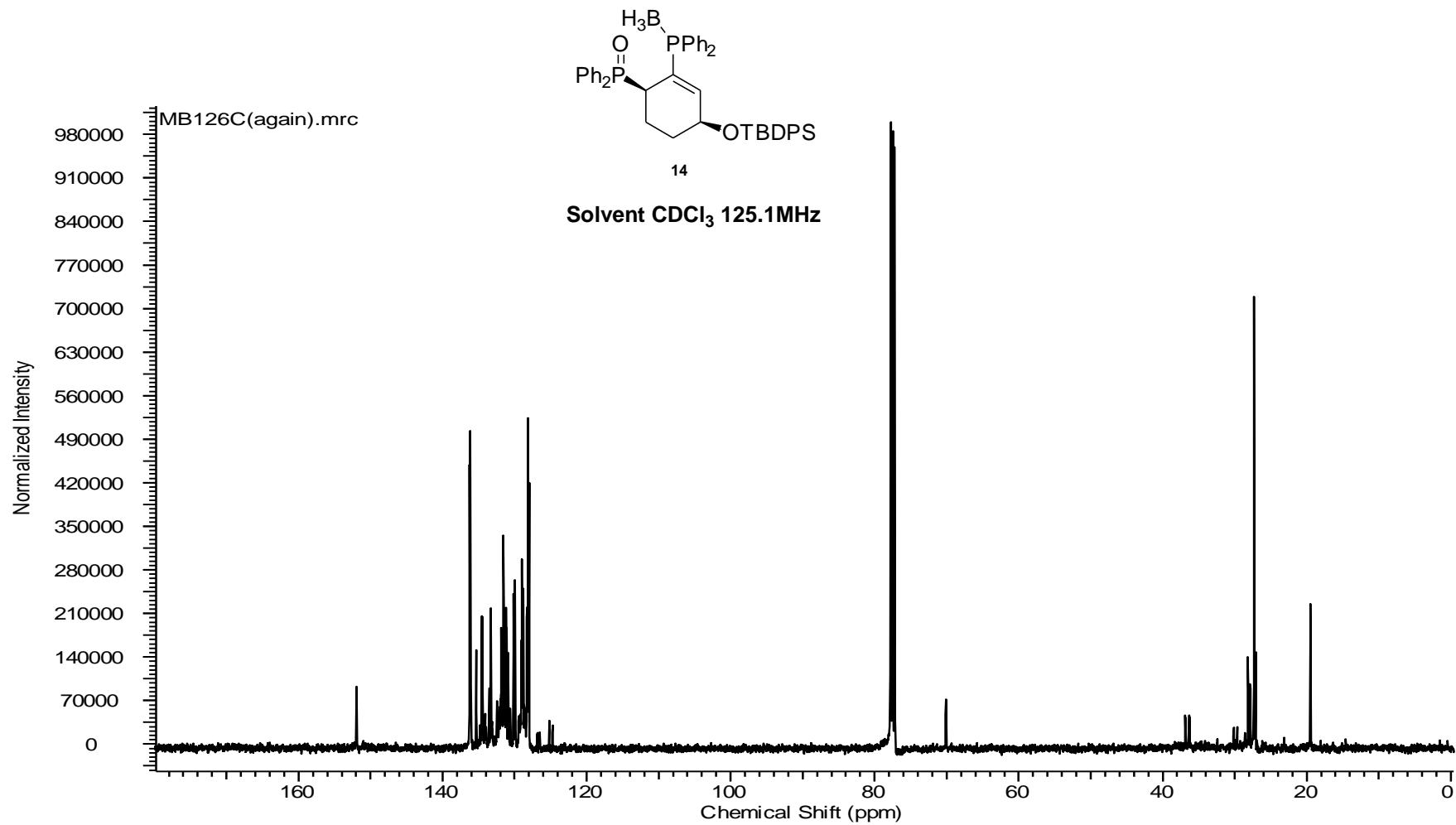


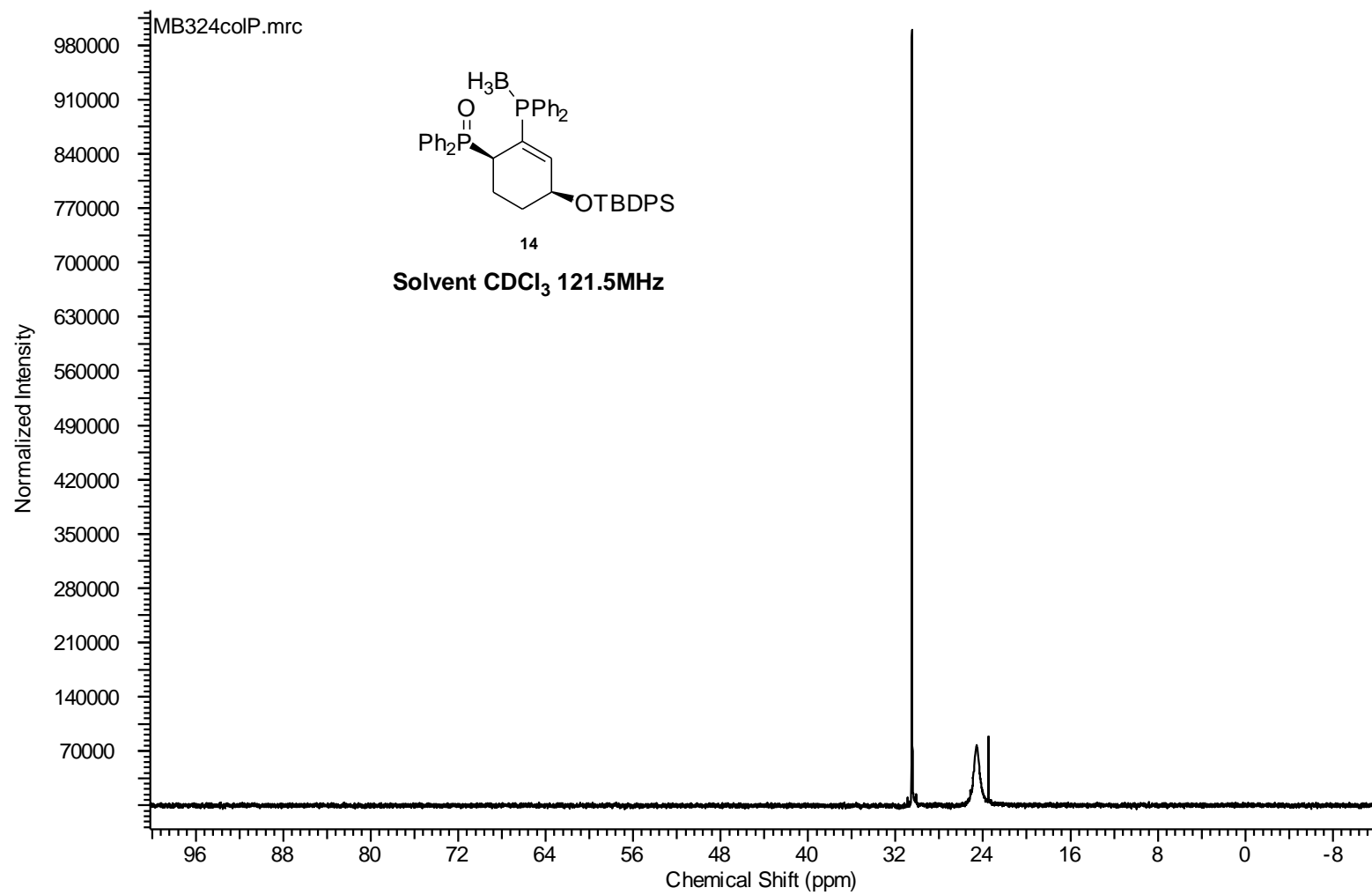


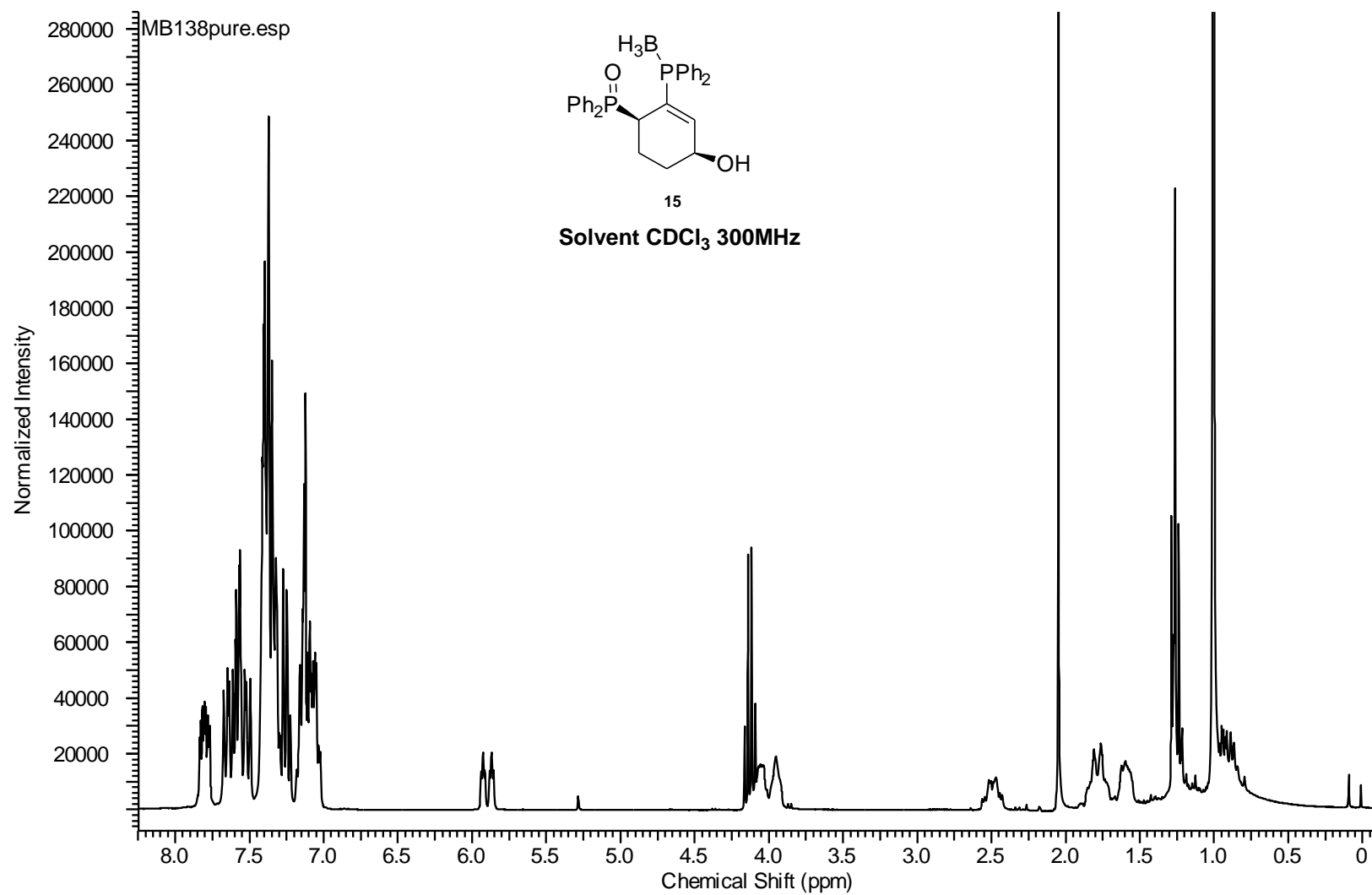


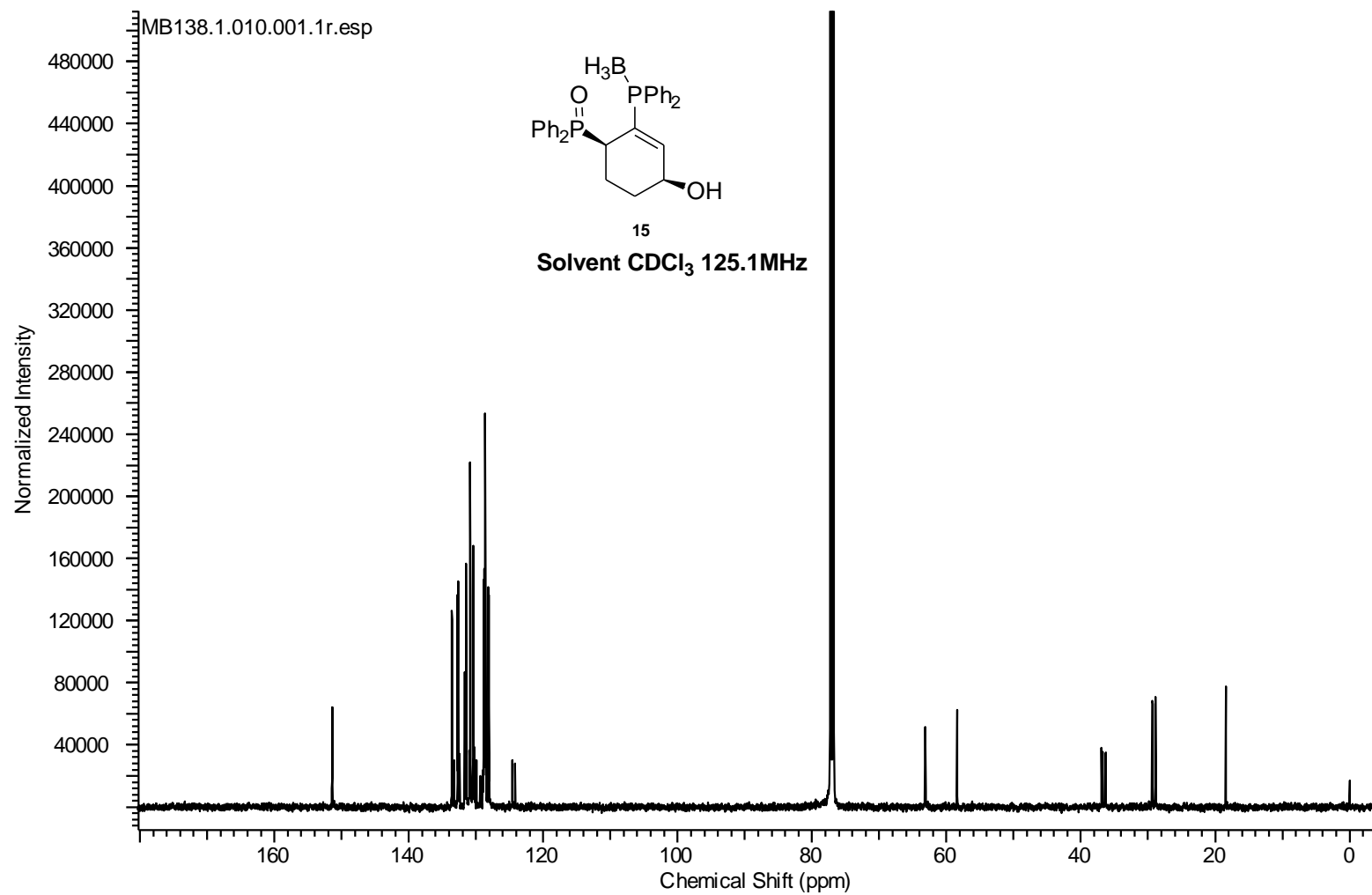


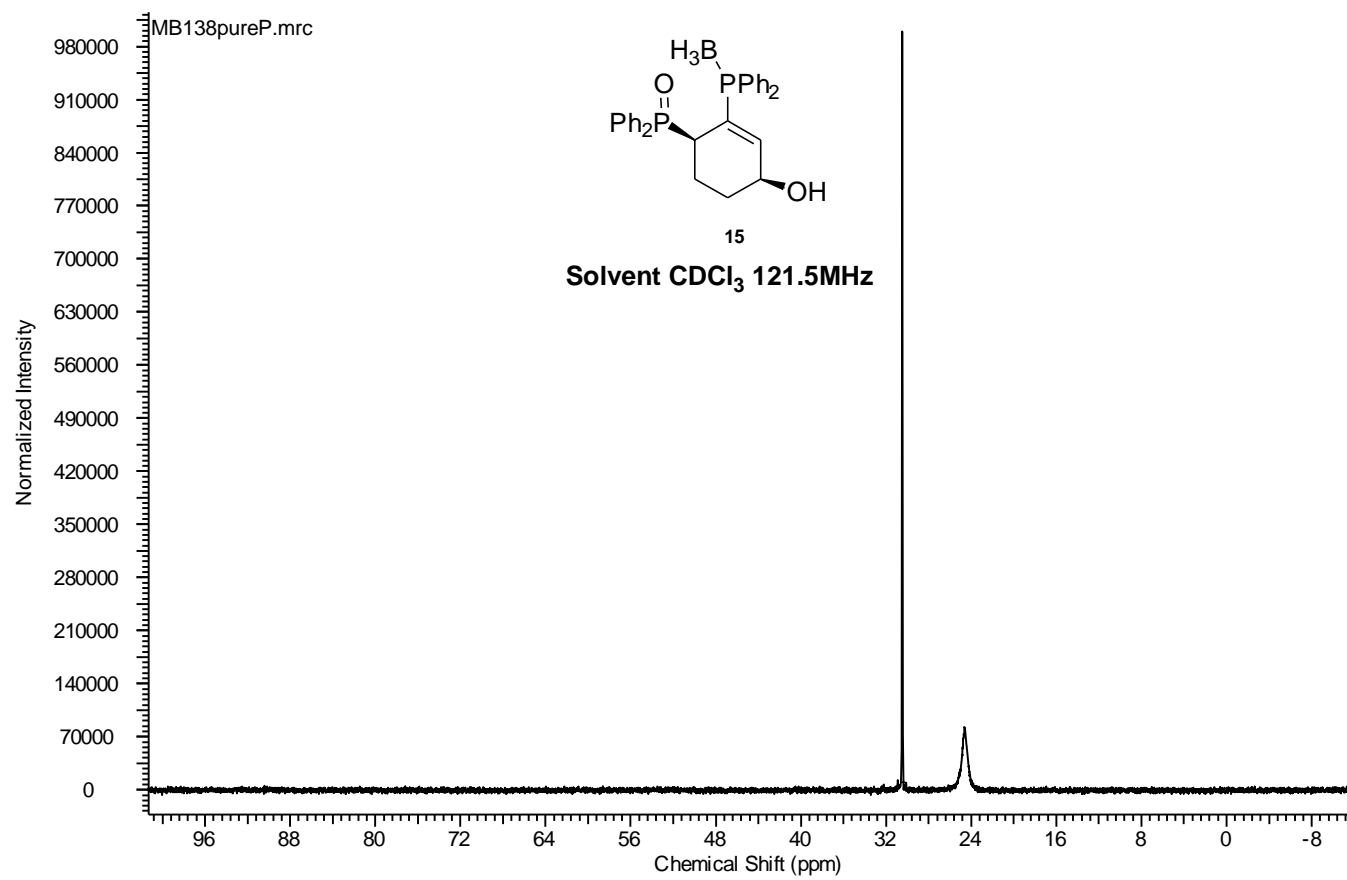


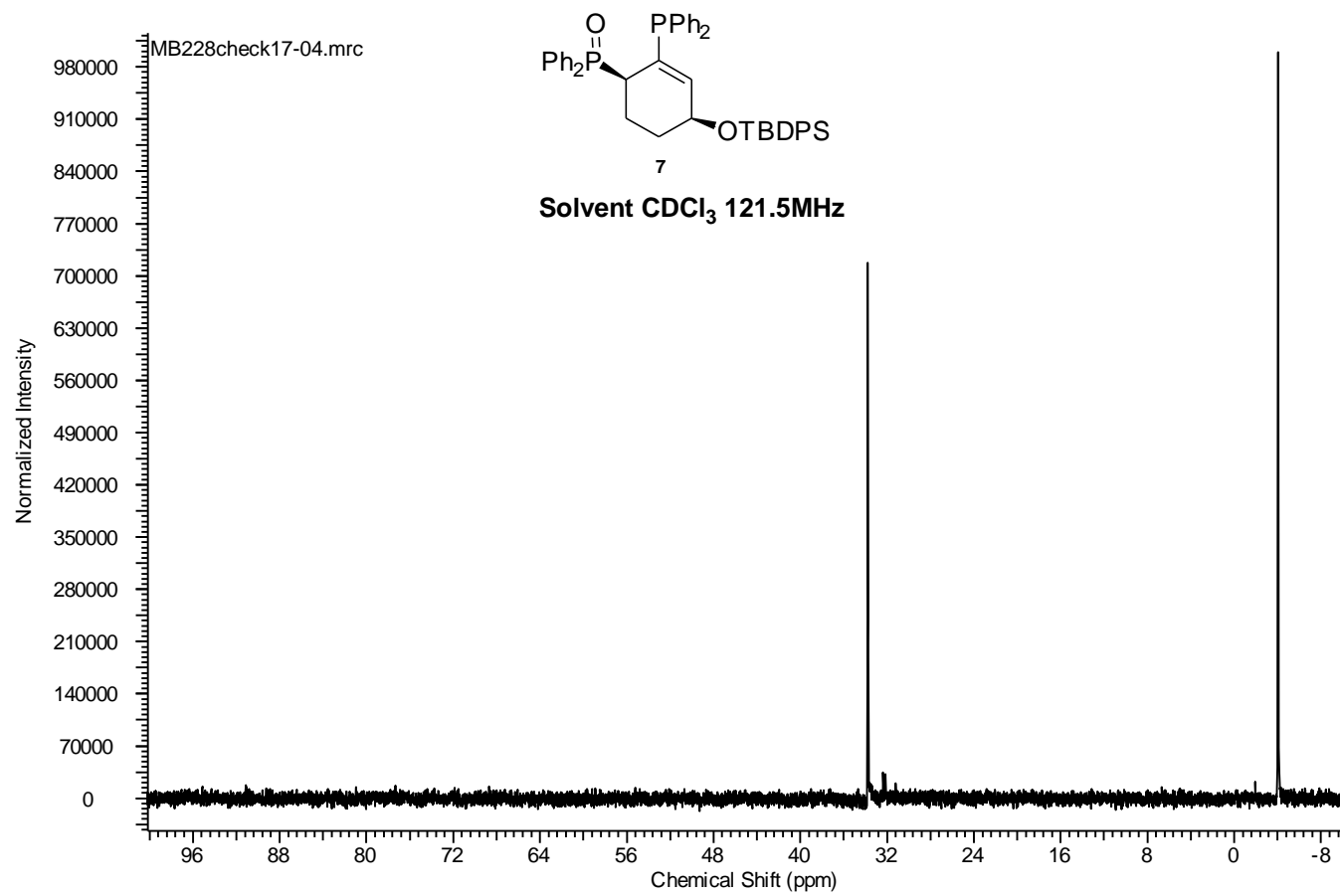


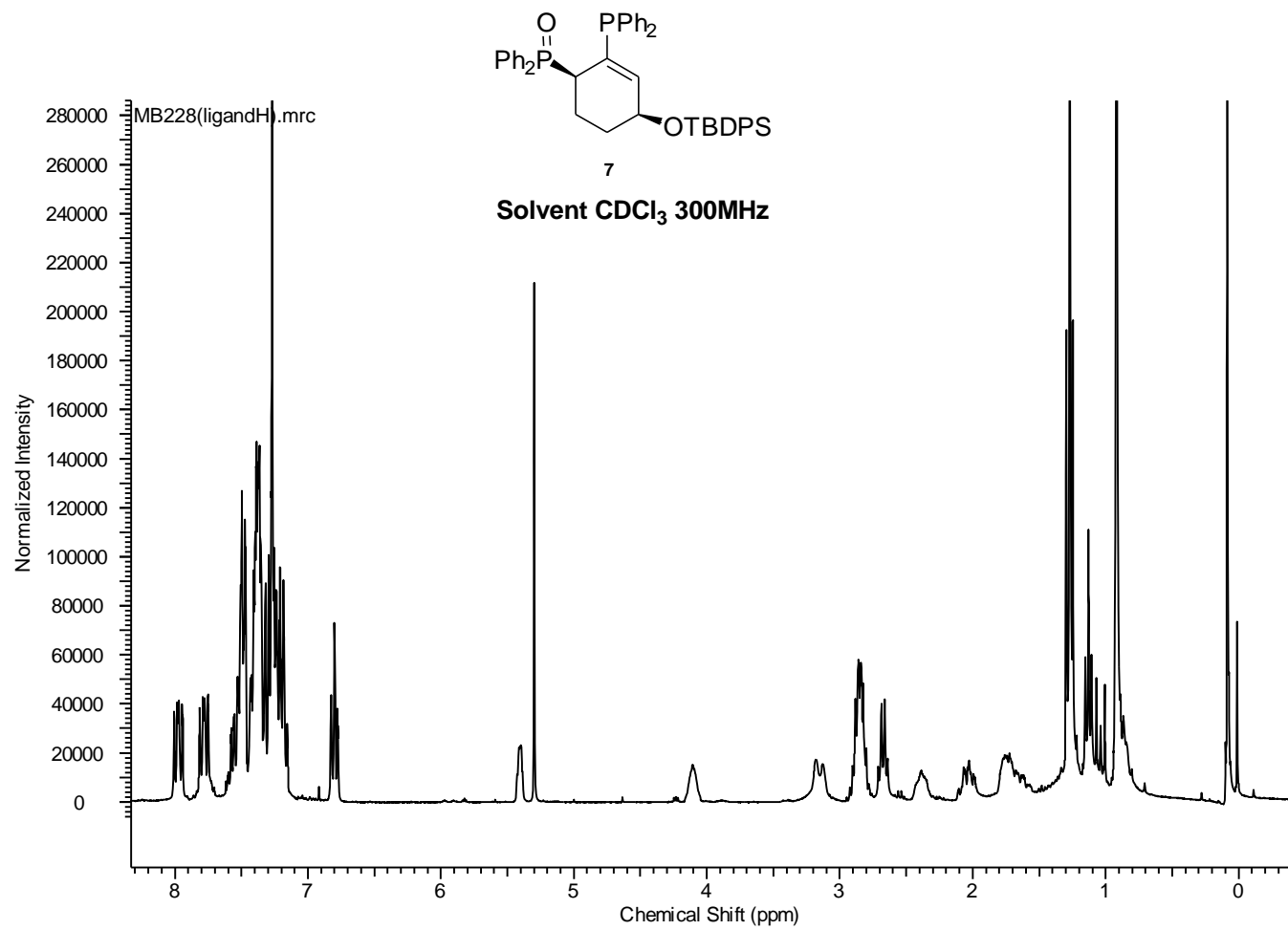


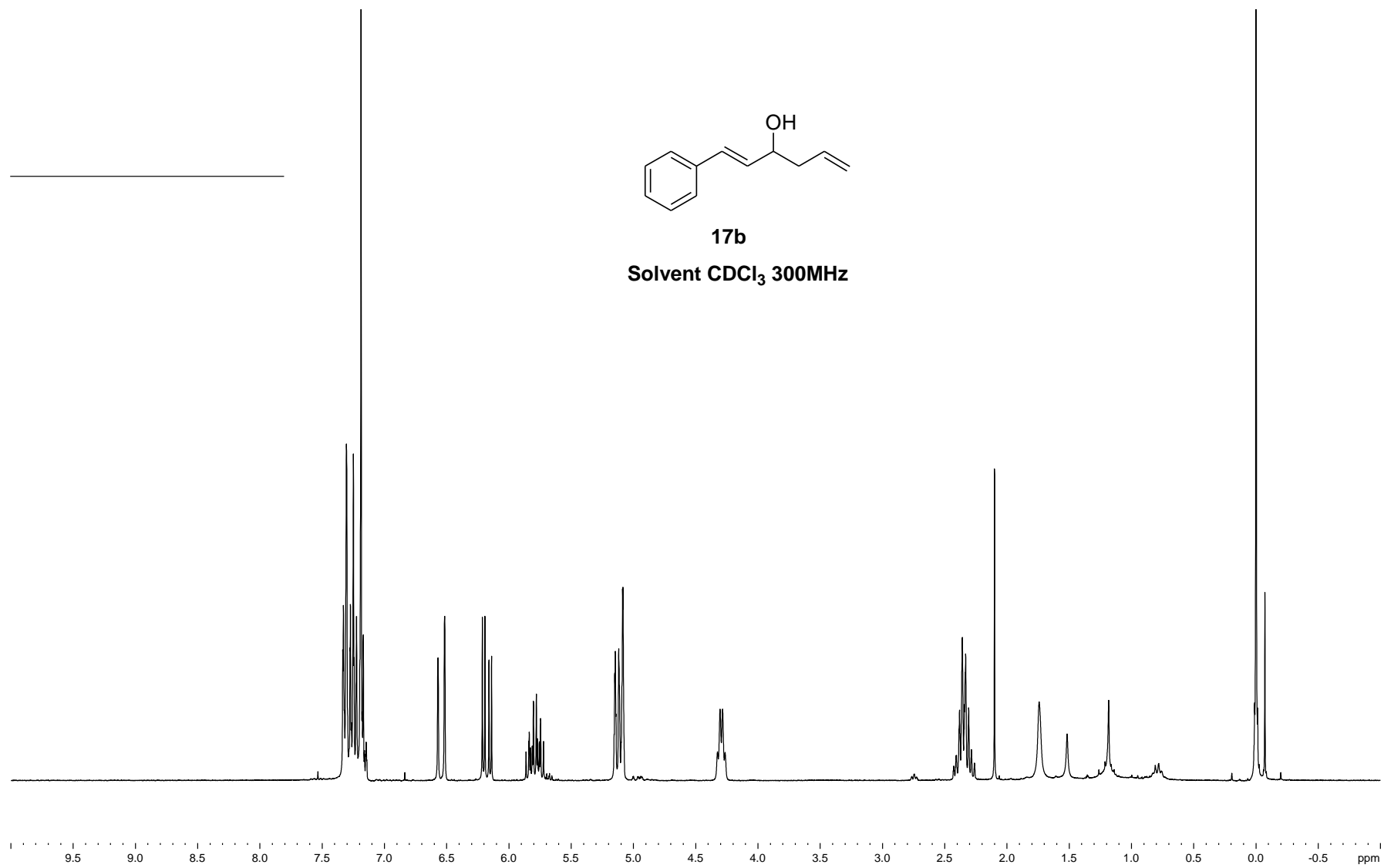


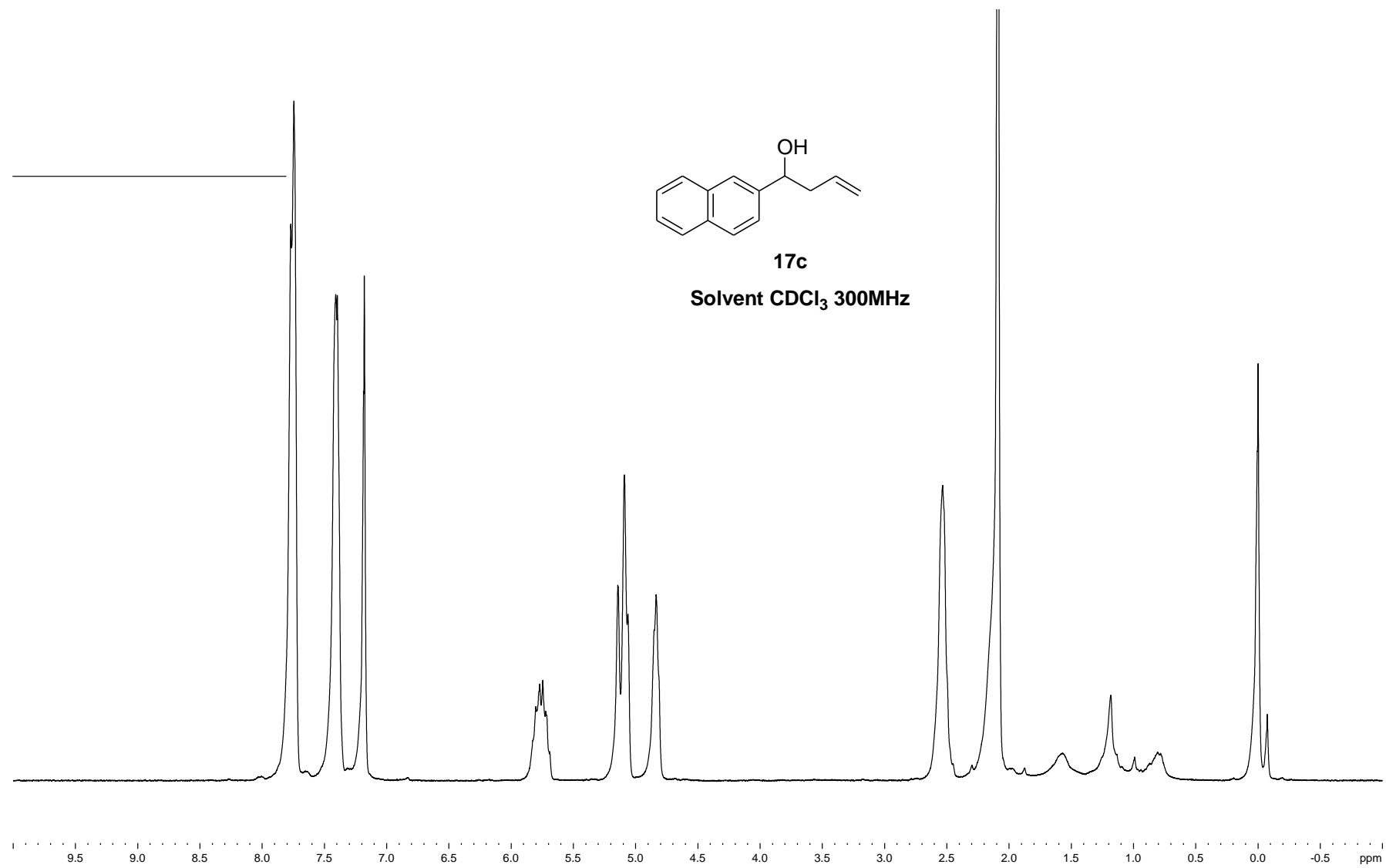


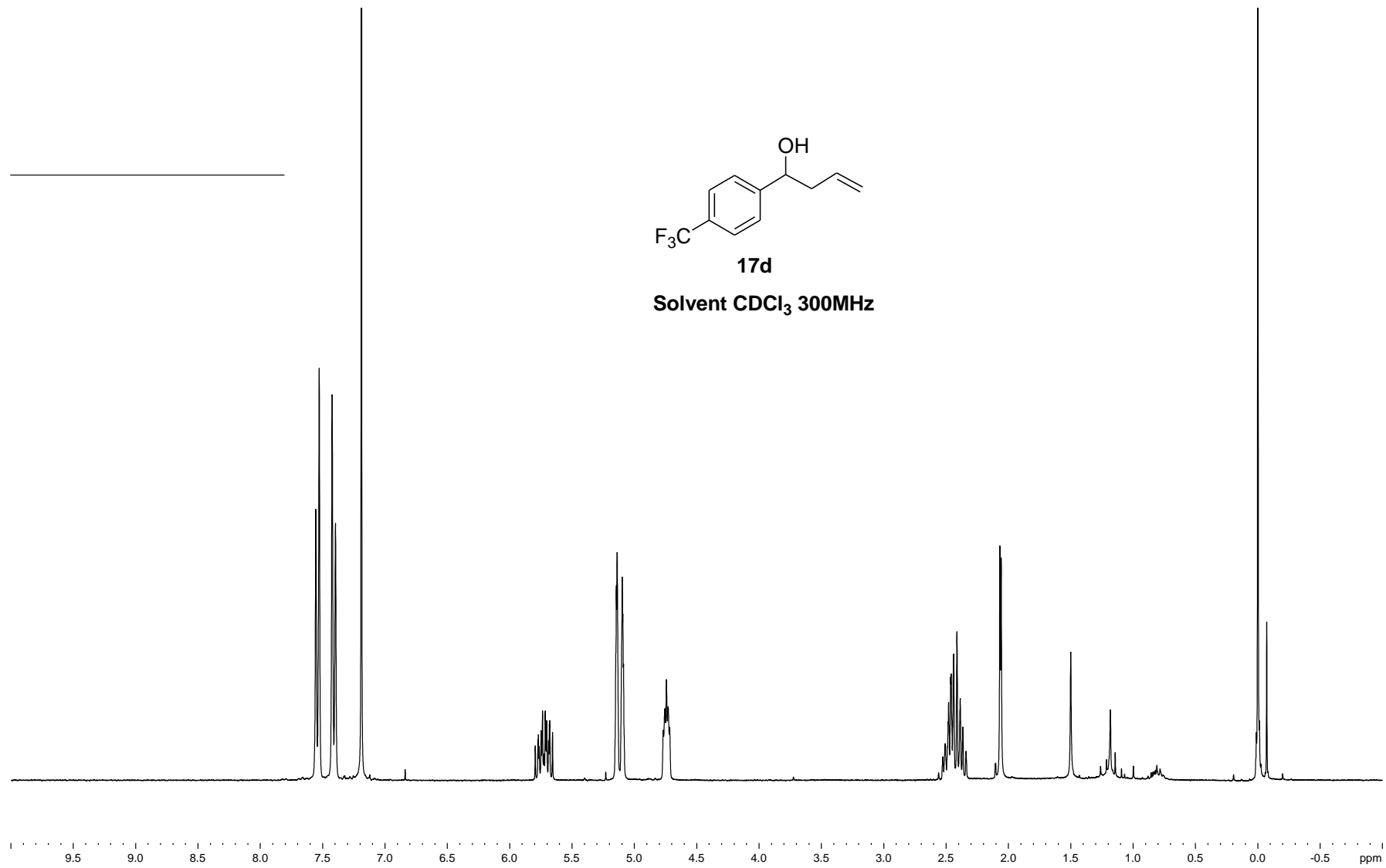


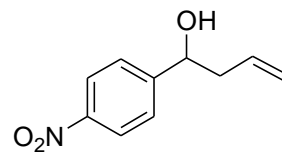












17e

Solvent CDCl₃ 300MHz

