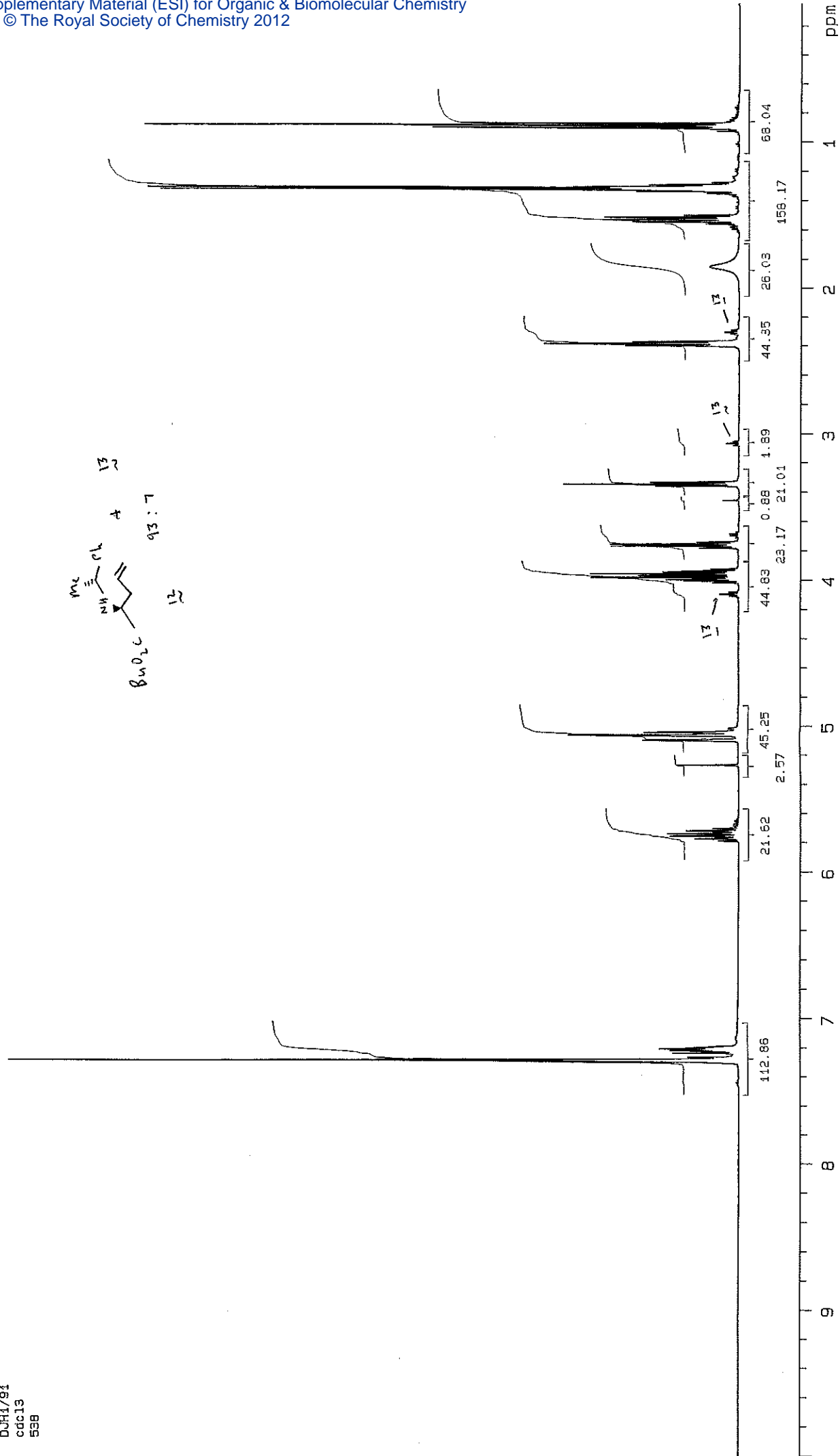
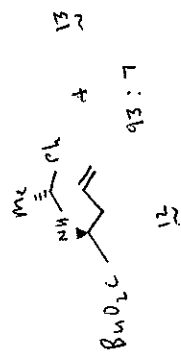
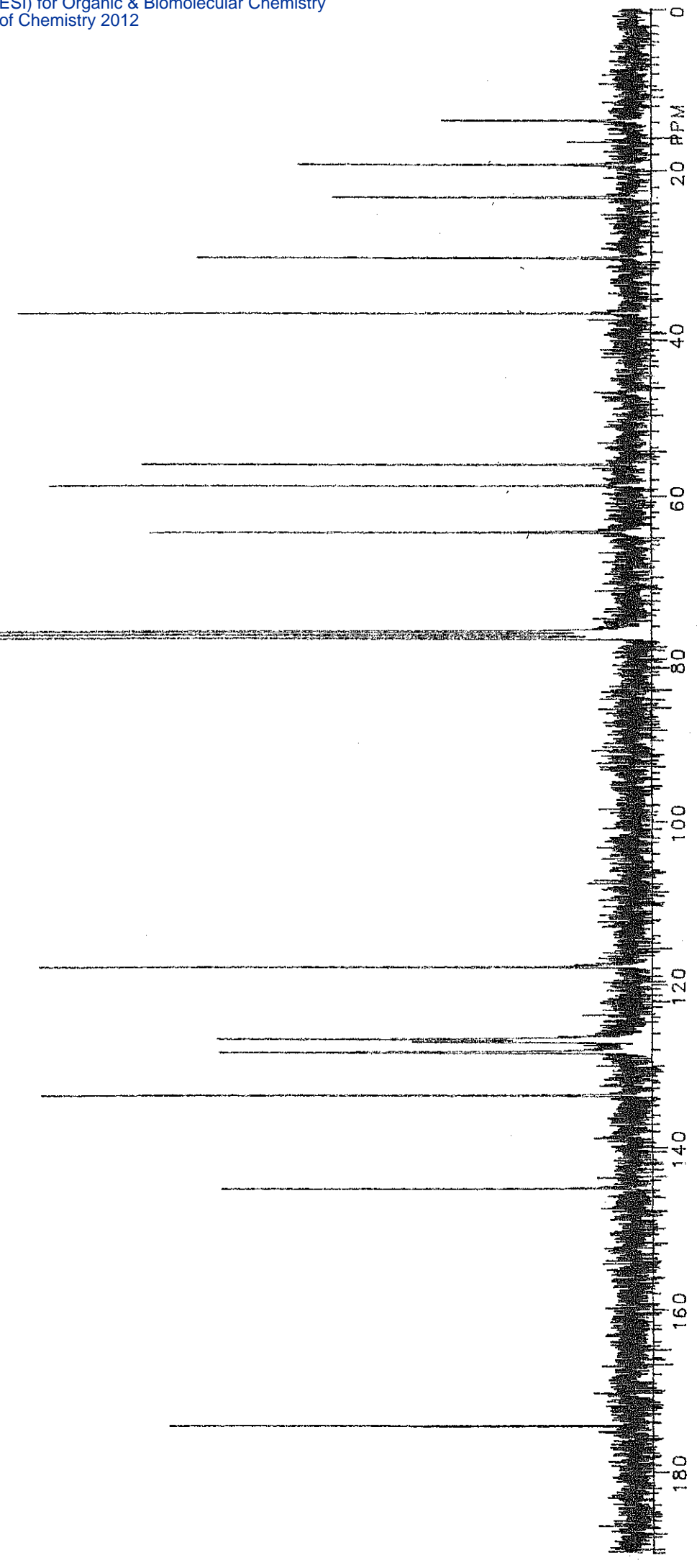
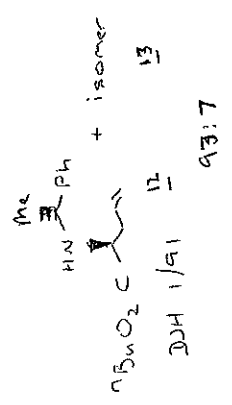
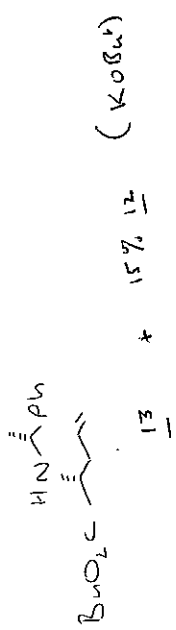


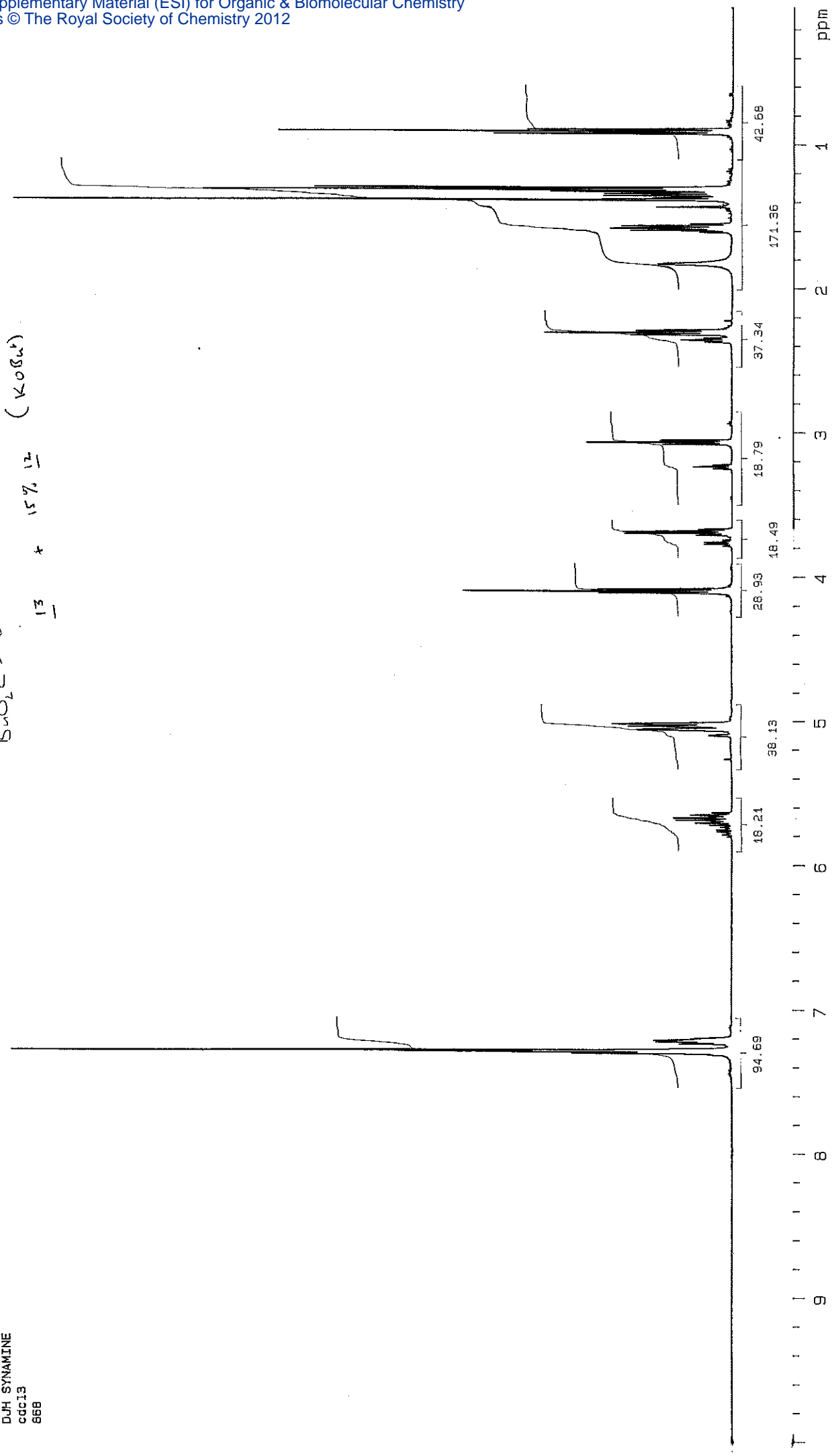
D. Halliwell
D0H1/91
cdcl3
536

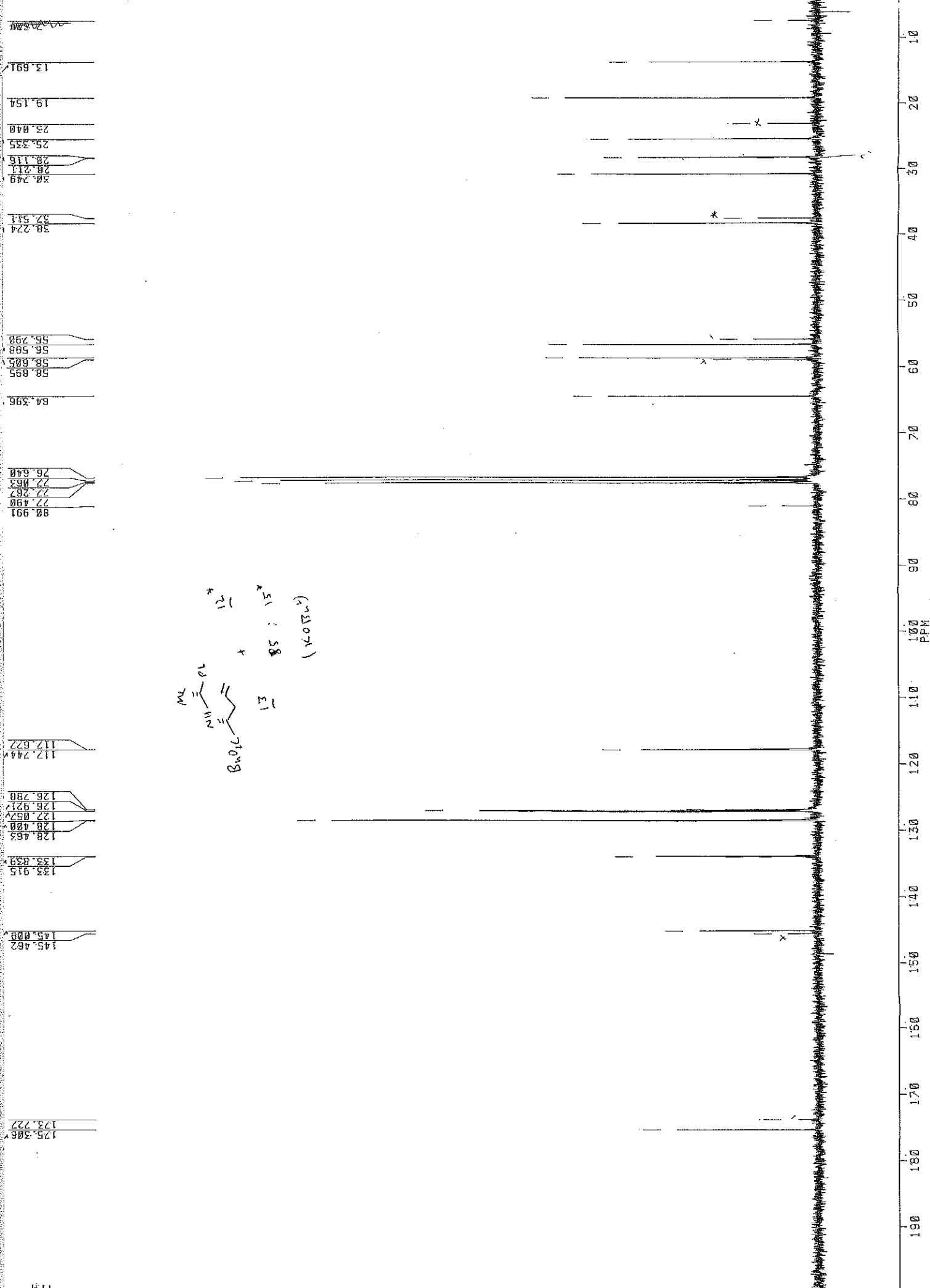


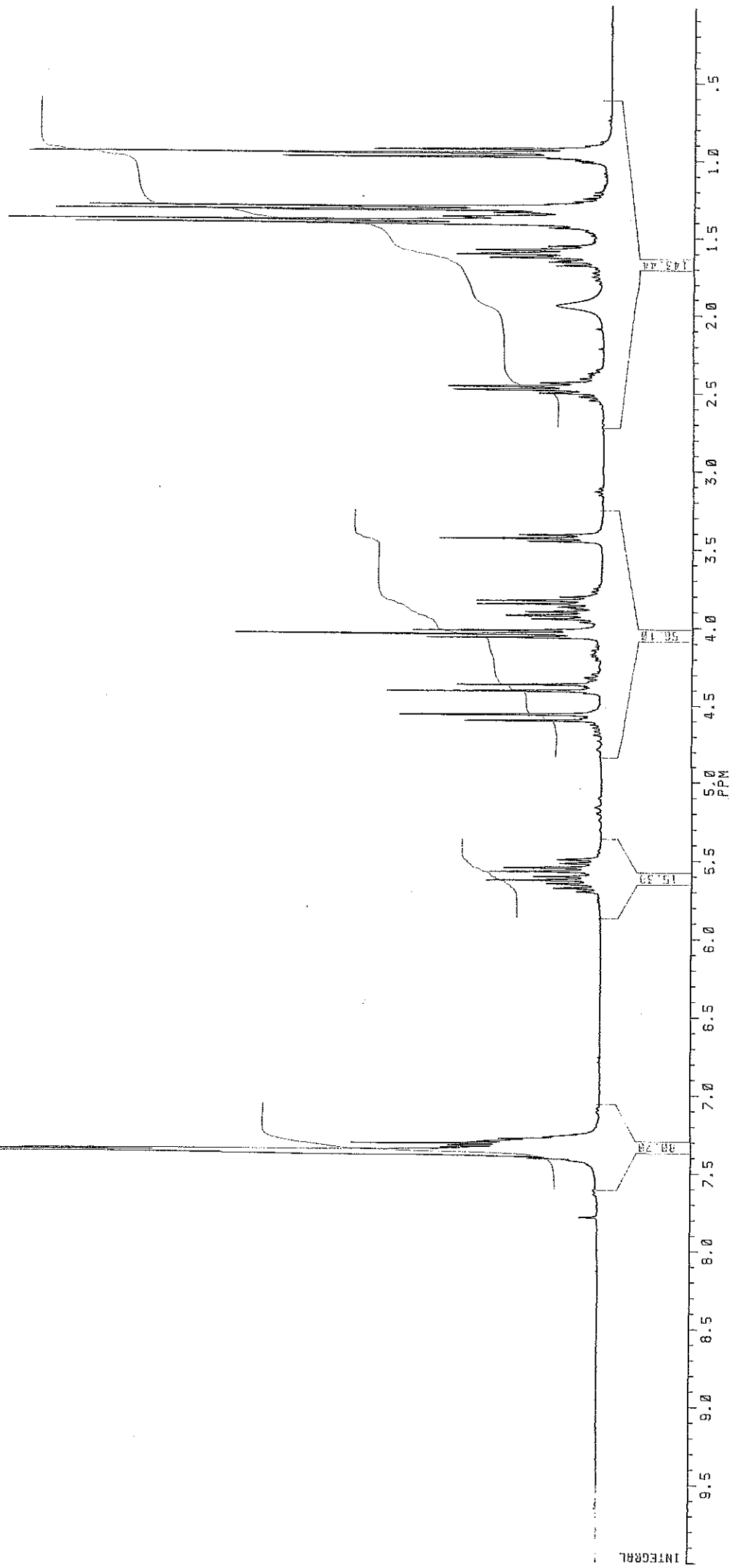
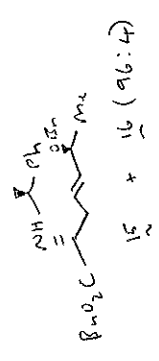


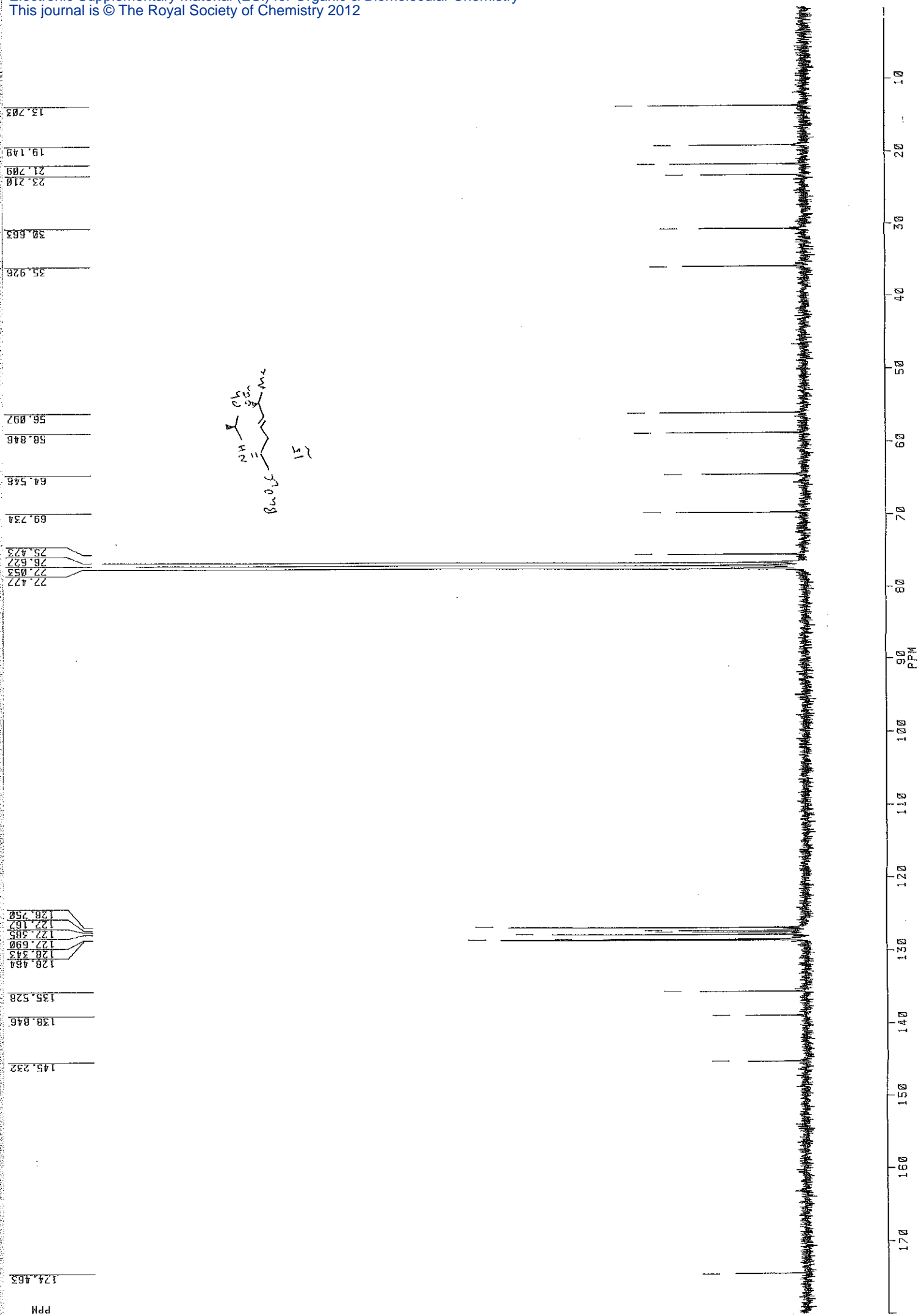


D. Hallett
DJH SYNAMINE
cdc13
868

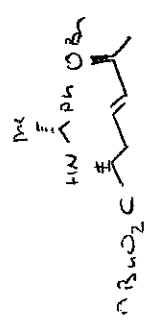




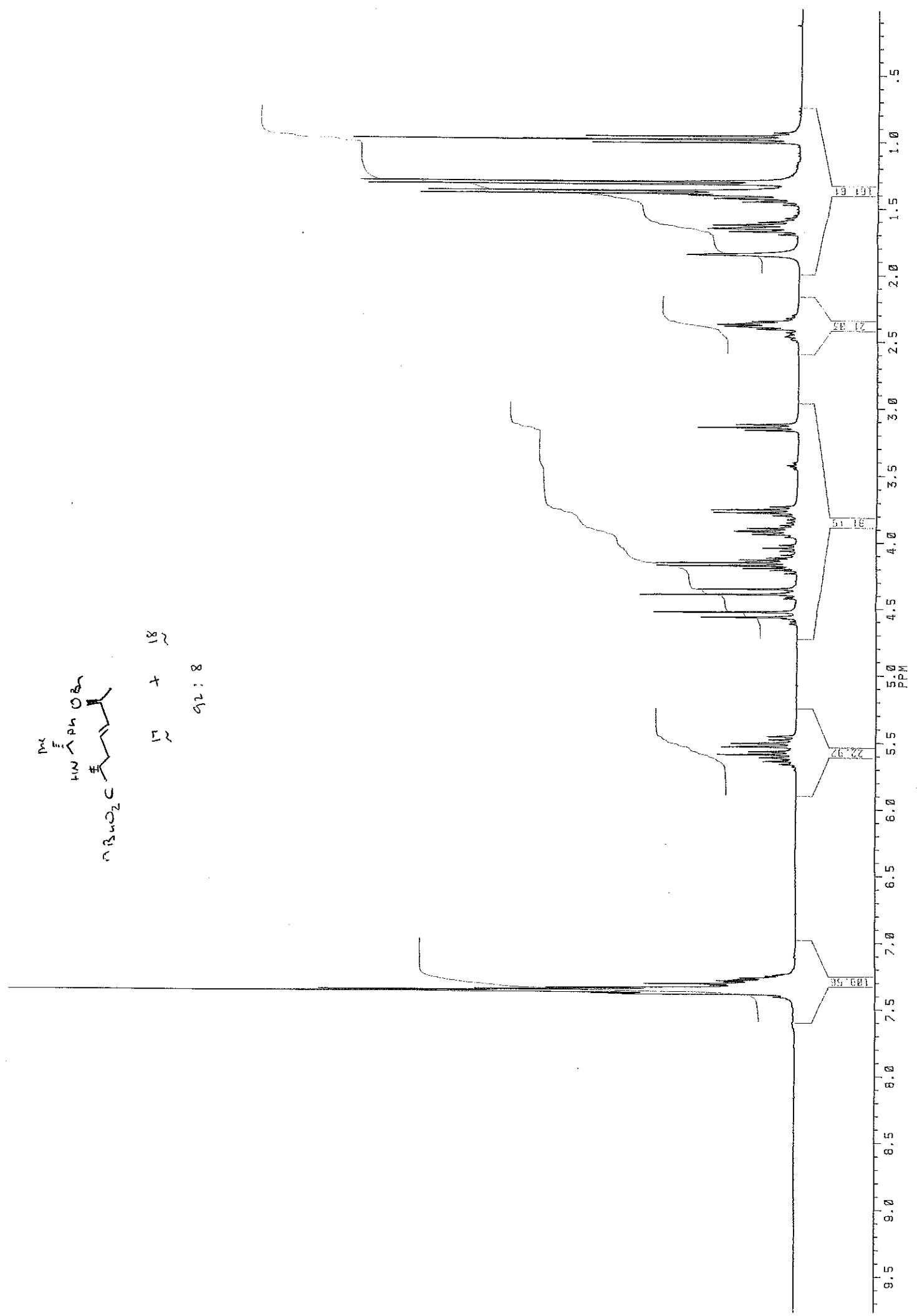


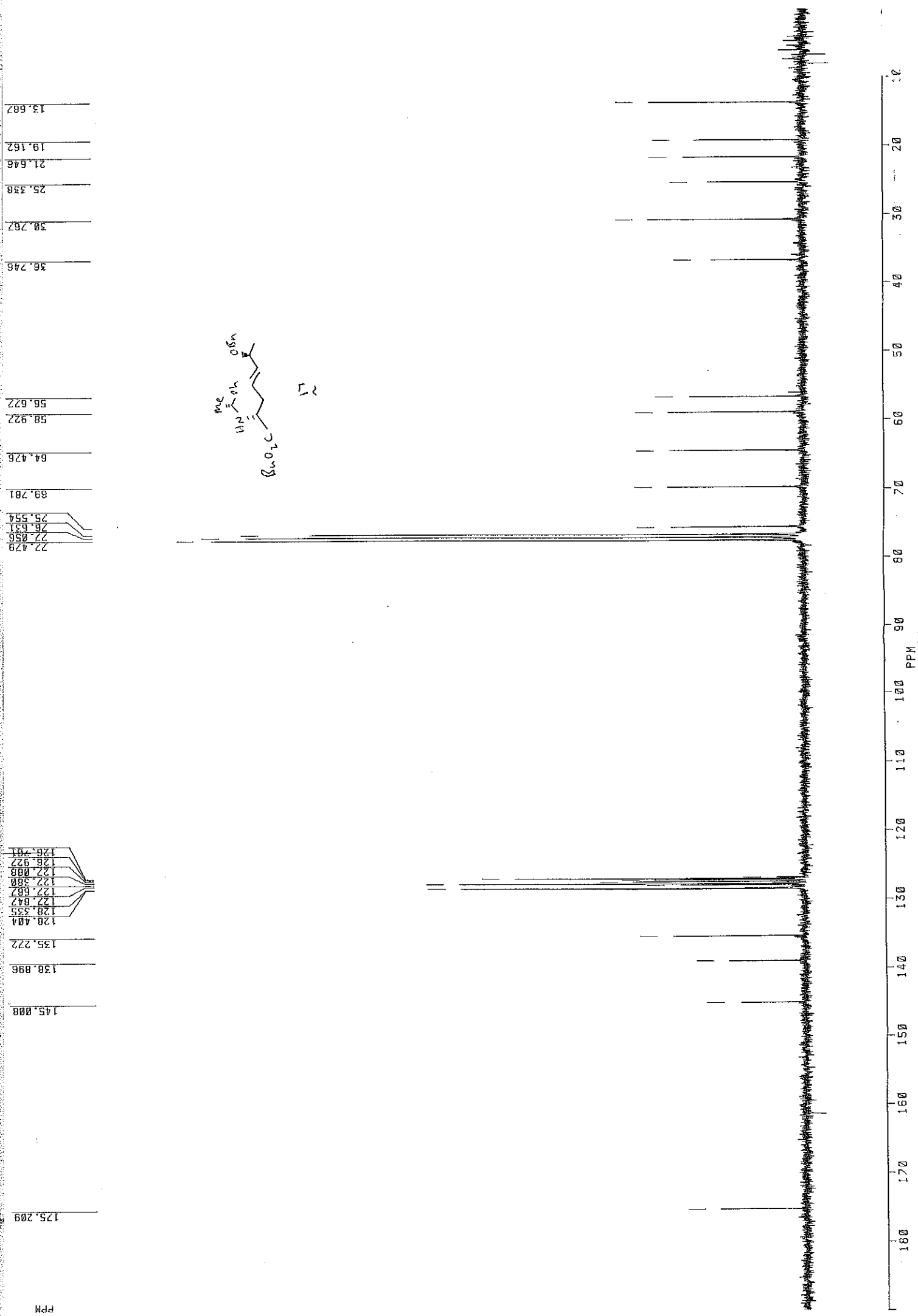


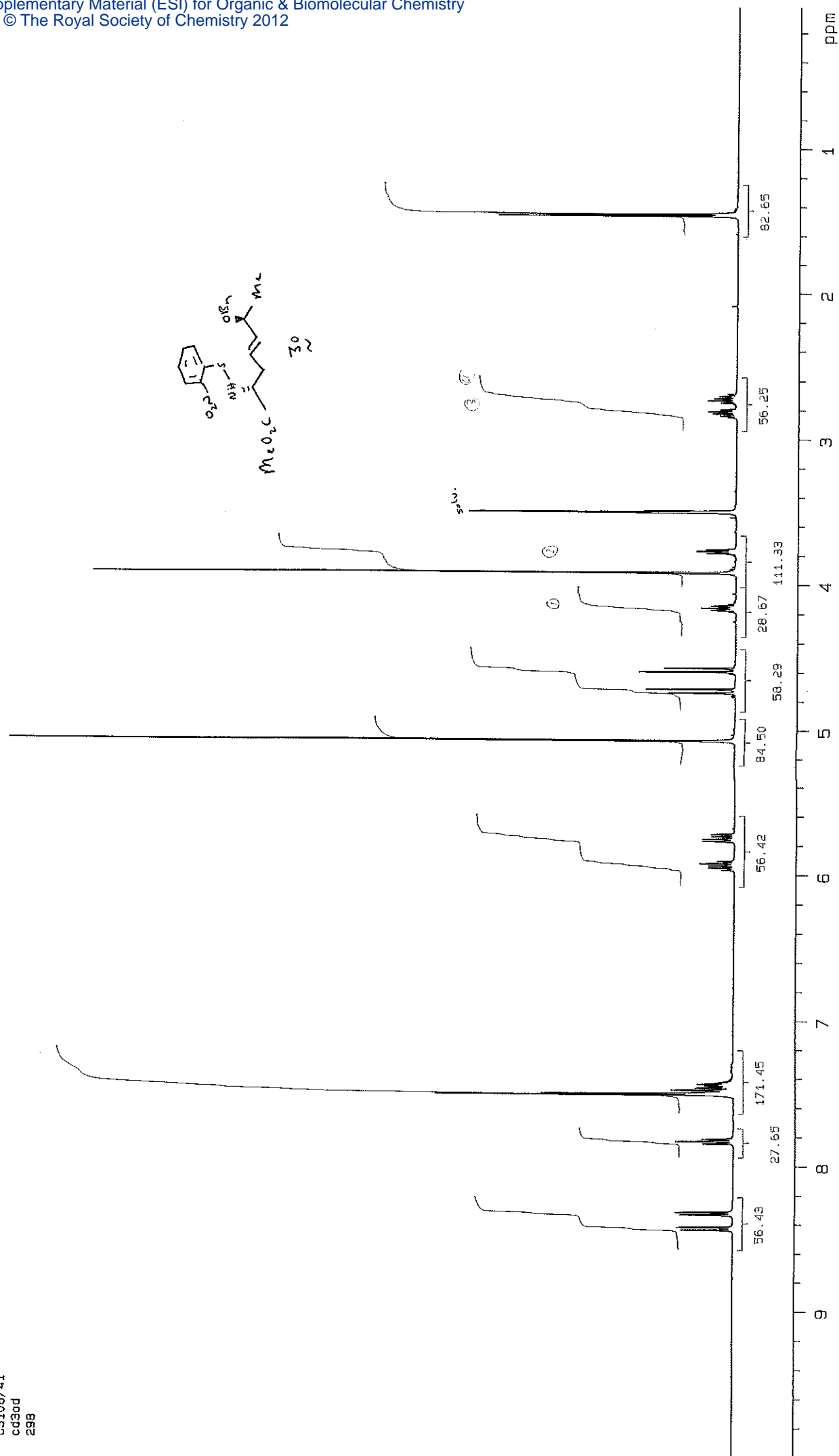
CUY
PI
D
SF
SI
TD
SW
PW
RD
RQ
RS
NS
OZ
DF
LB
UR



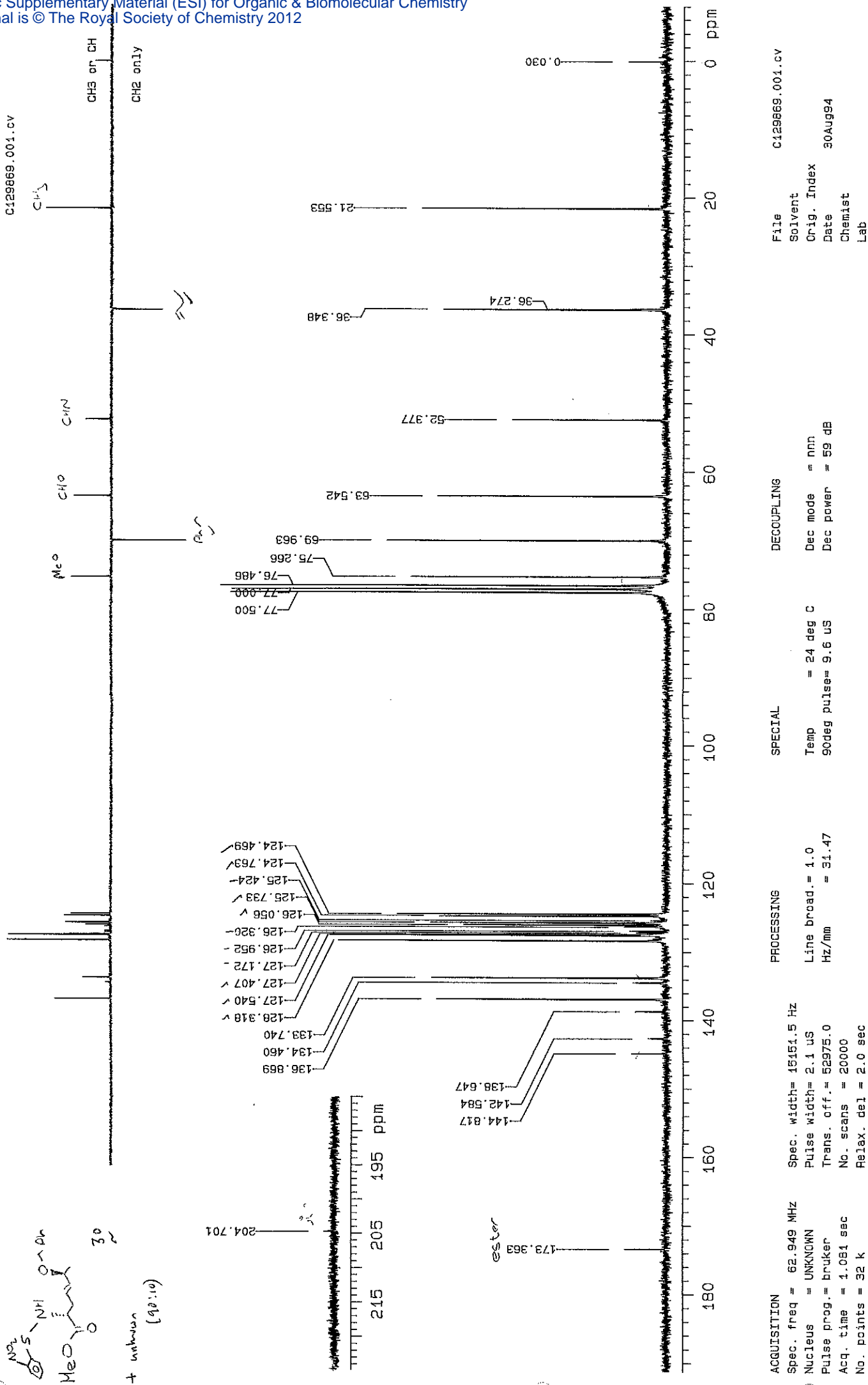
17 + 18
92:8







C129869.001.cv
 BRUKER AC/AM250
 C129869.001.cv



ACQUISITION
 Spec. freq = 62.949 MHz
 Nucleus = UNKNOWN
 Pulse prog. = bruker
 Acq. time = 1.081 sec
 No. points = 32 k

PROCESsing
 Line broad. = 1.0
 Hz/mm = 31.47

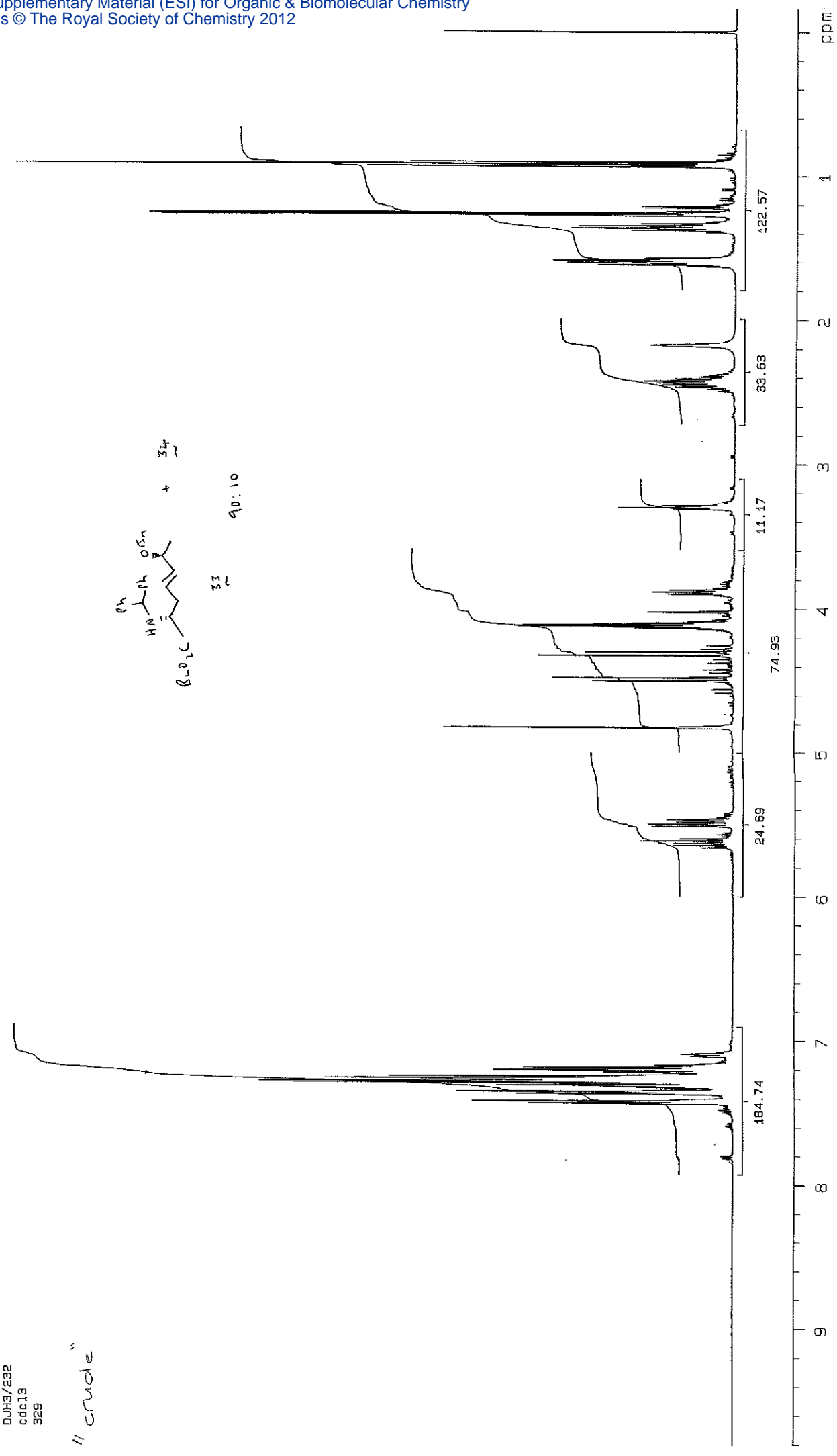
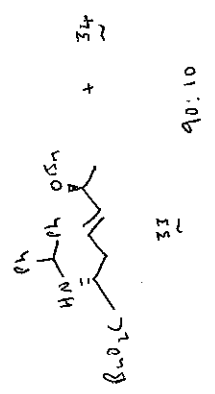
SPECIAL
 Temp = 24 deg C
 90deg pulse = 9.6 uS

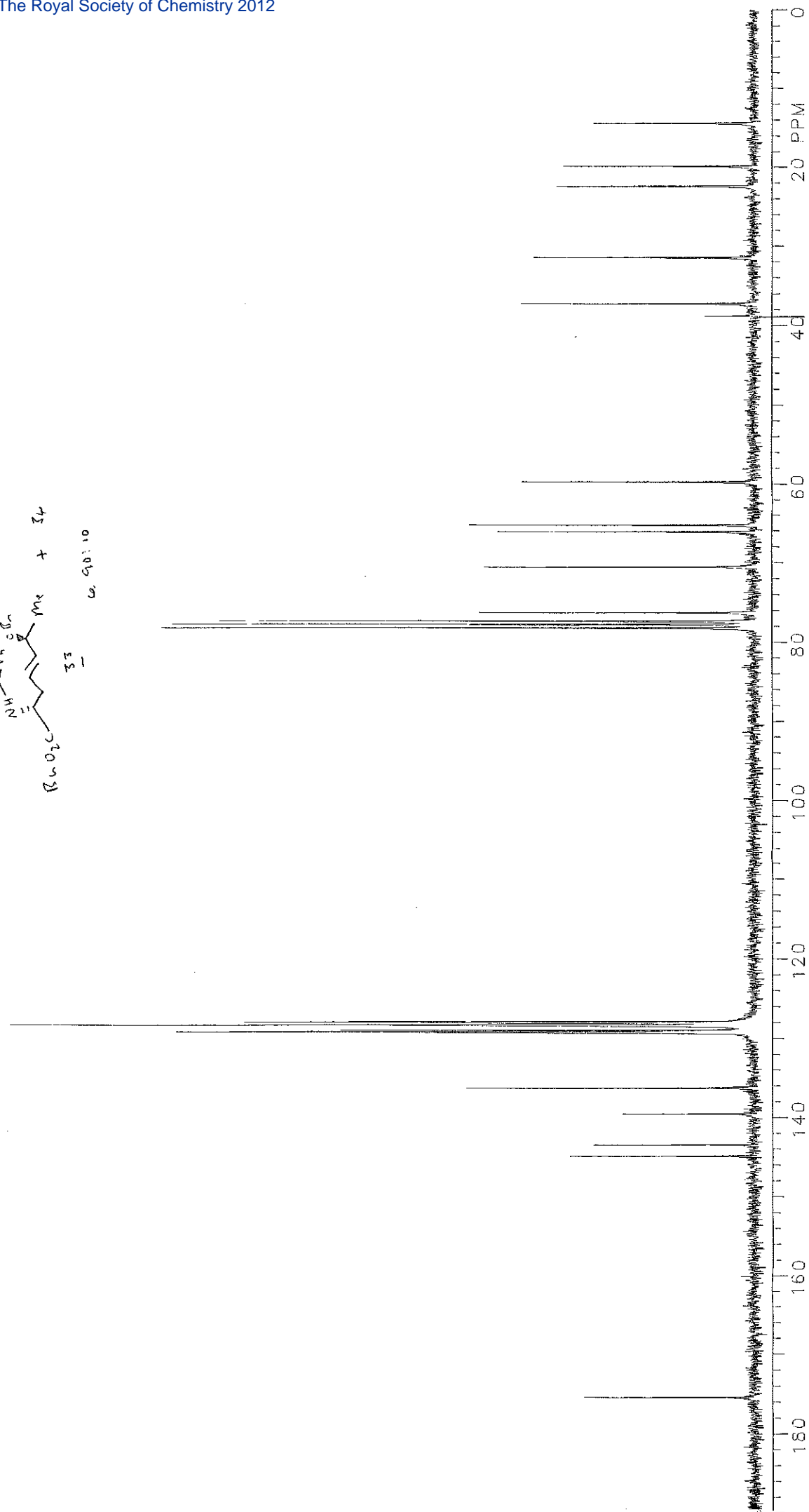
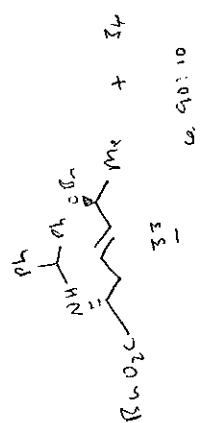
DECOUPLING
 Dec mode = nnn
 Dec power = 59 dB

File C129869.001.cv
 Solvent
 Orig. Index
 Date 30AUG94
 Chemist
 Lab

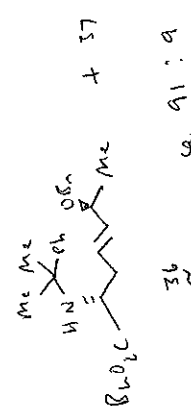
D. Hallett
DJH3/292
cdc13
329

"crude"

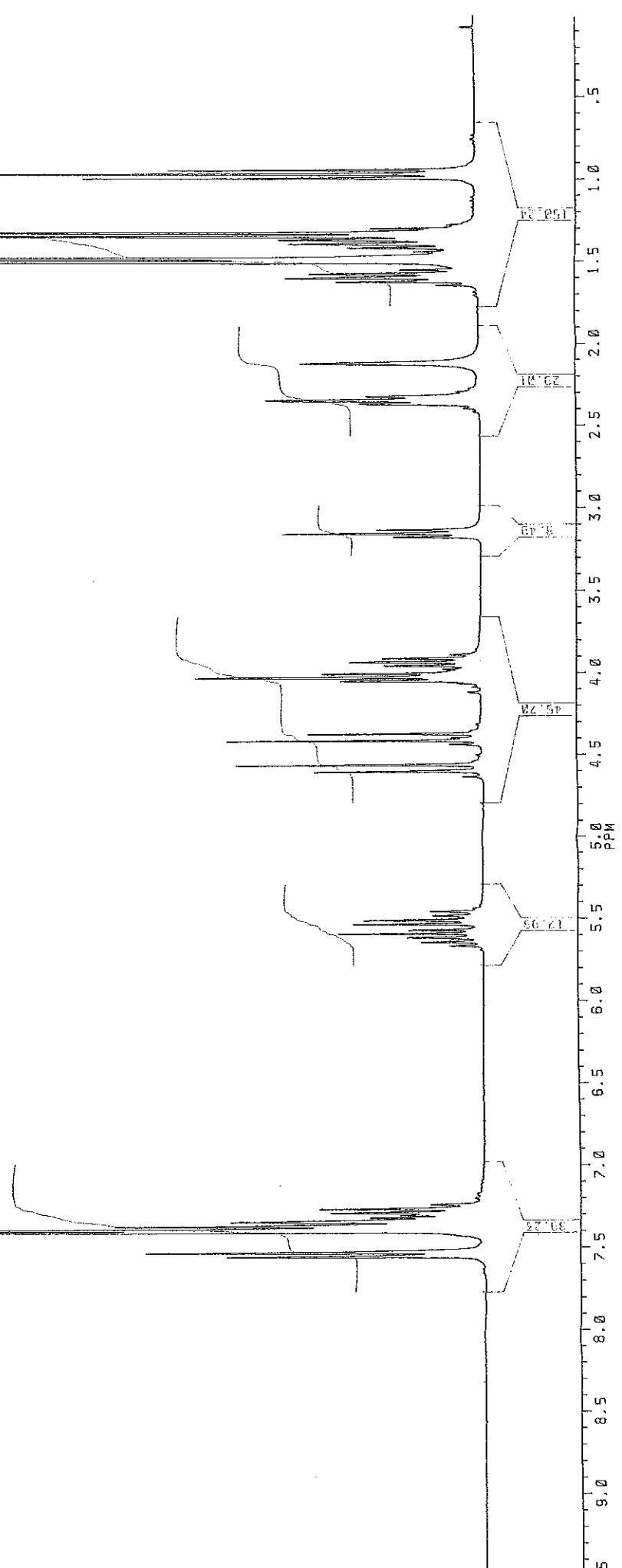


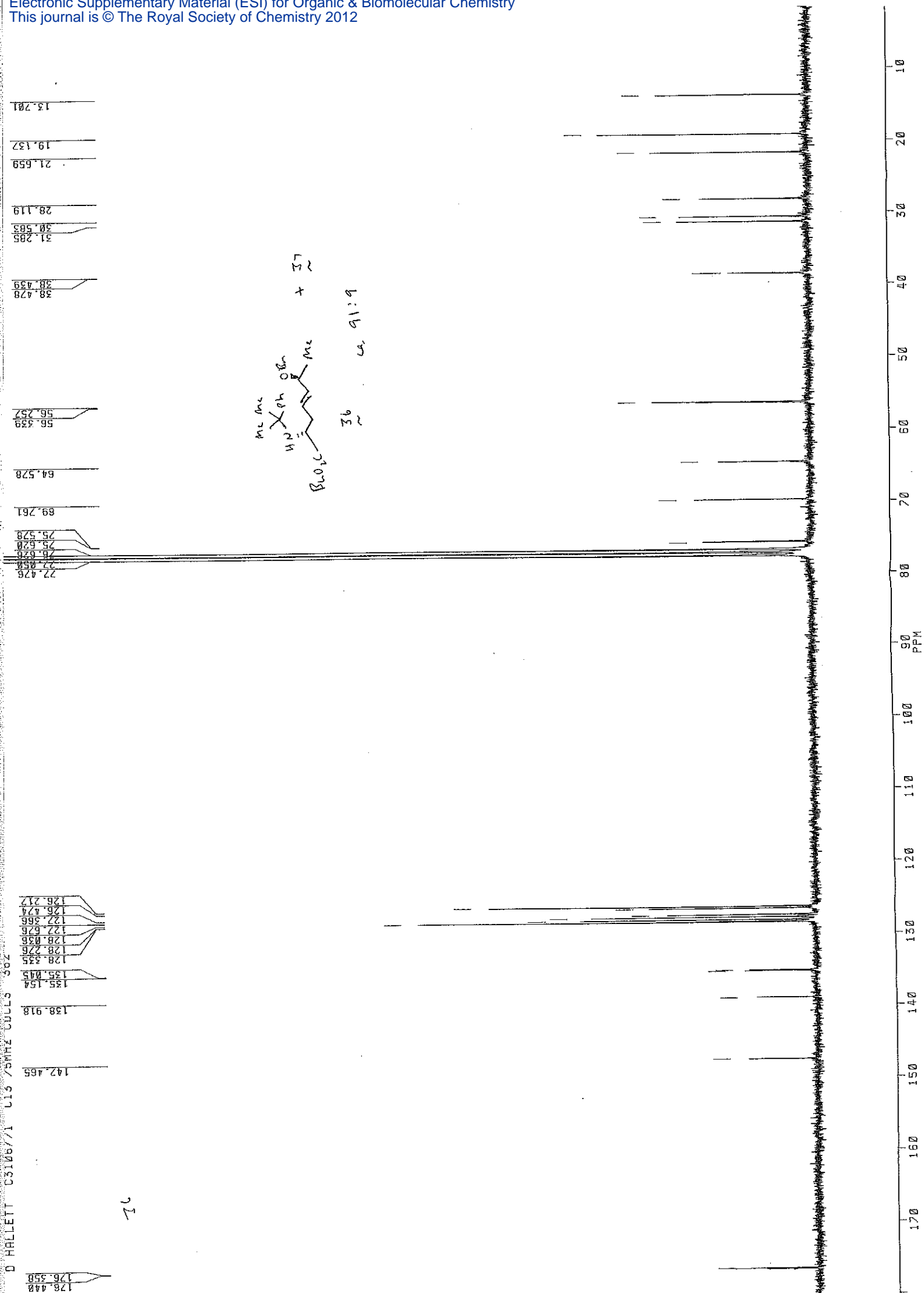


300MHz 421 D. HALLETT DJHS-7533 CDCL3



HM0A2400
AU PROC
STDI
DATE 5-6
SF 300
D1 5287
SI 52768
TD 18384
SW 4587
PW 8
RG 1
RG 1
NS 8
DZ 4163
DP 4L P
LB 0
CY 3355
SR



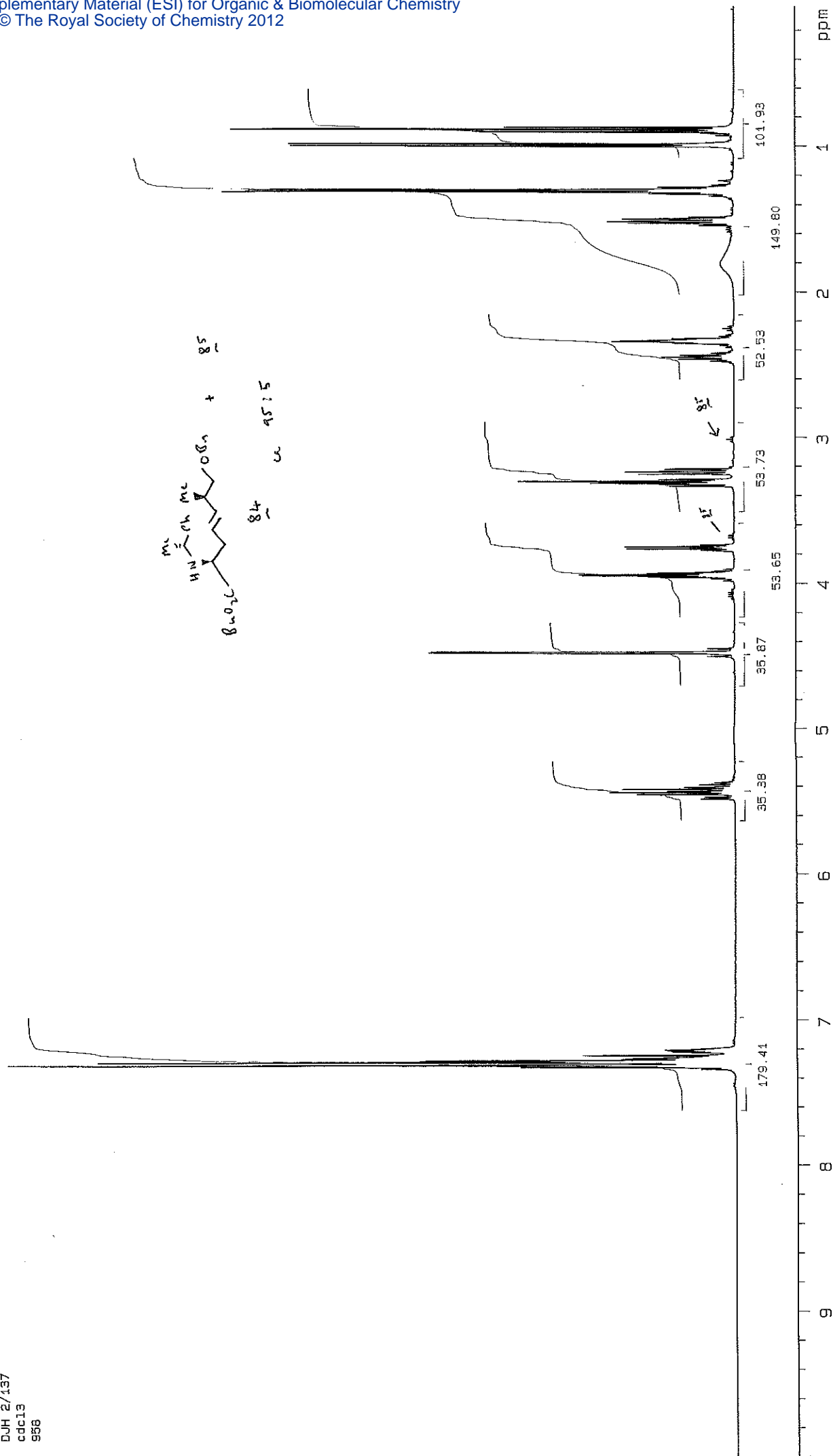


12

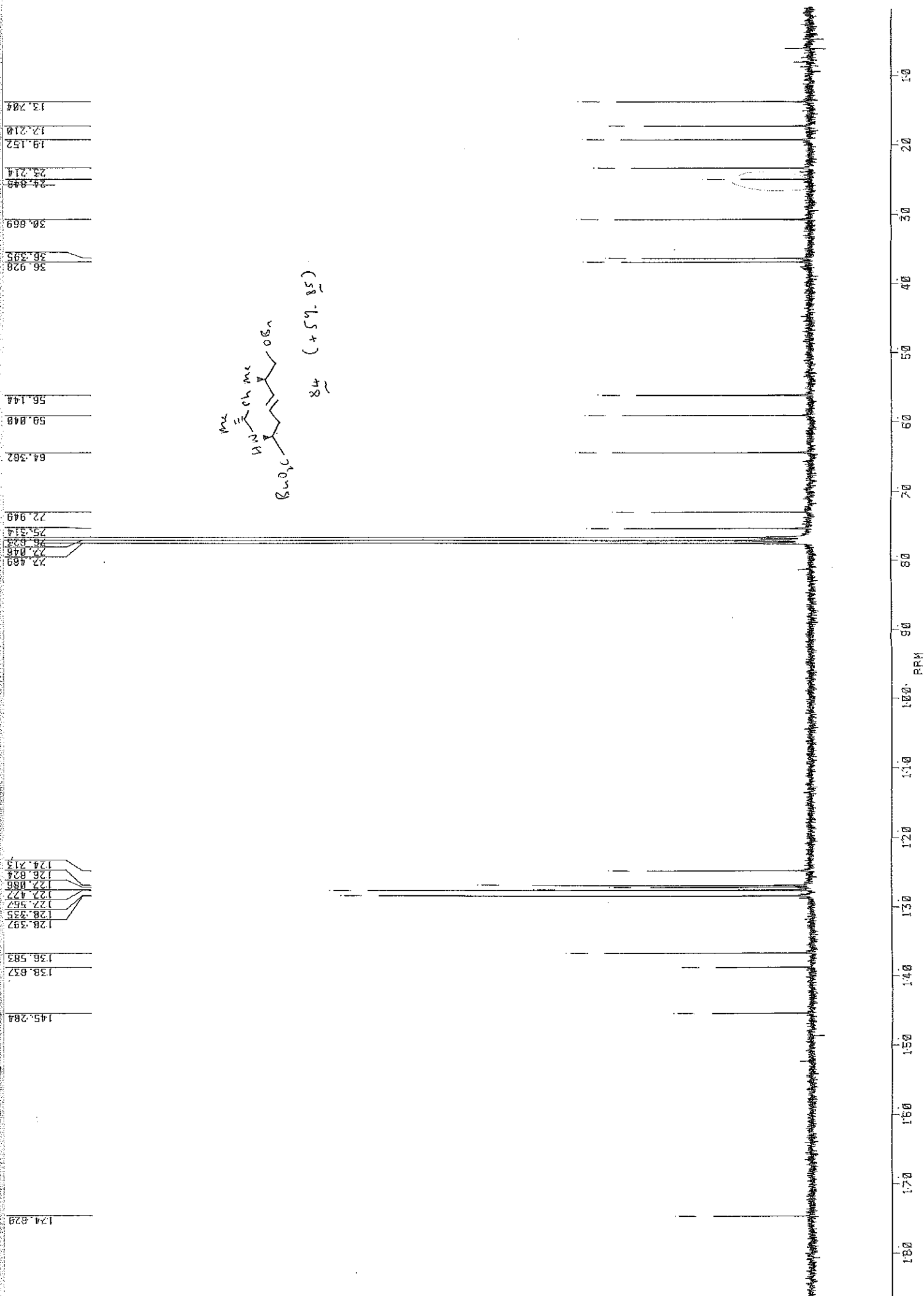
D HALLETT CS106/1 015 25MHz CULLS 502

PPM

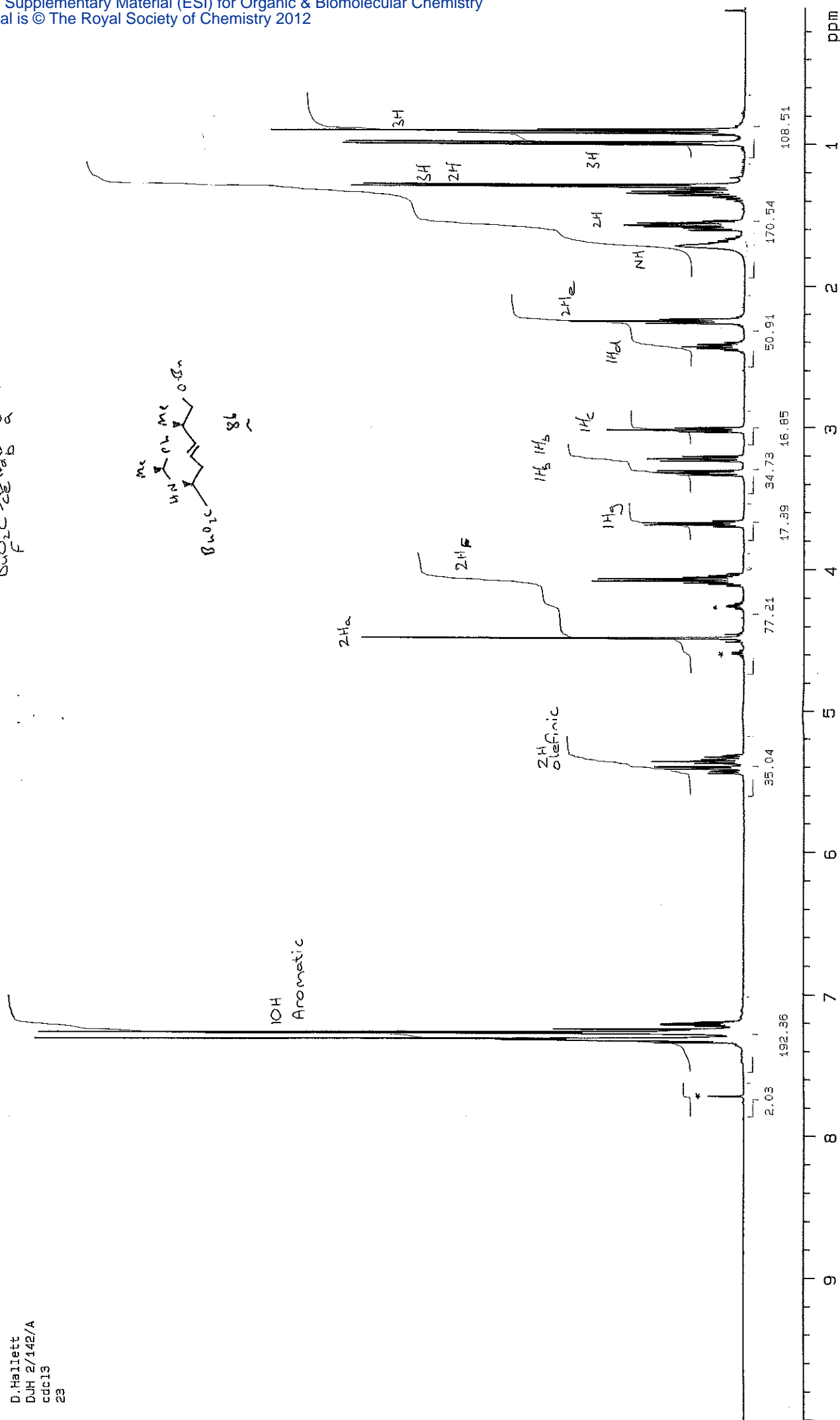
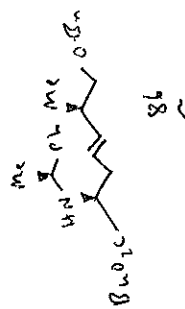
D. Halliwell
DJH 2/137
cdc13
958

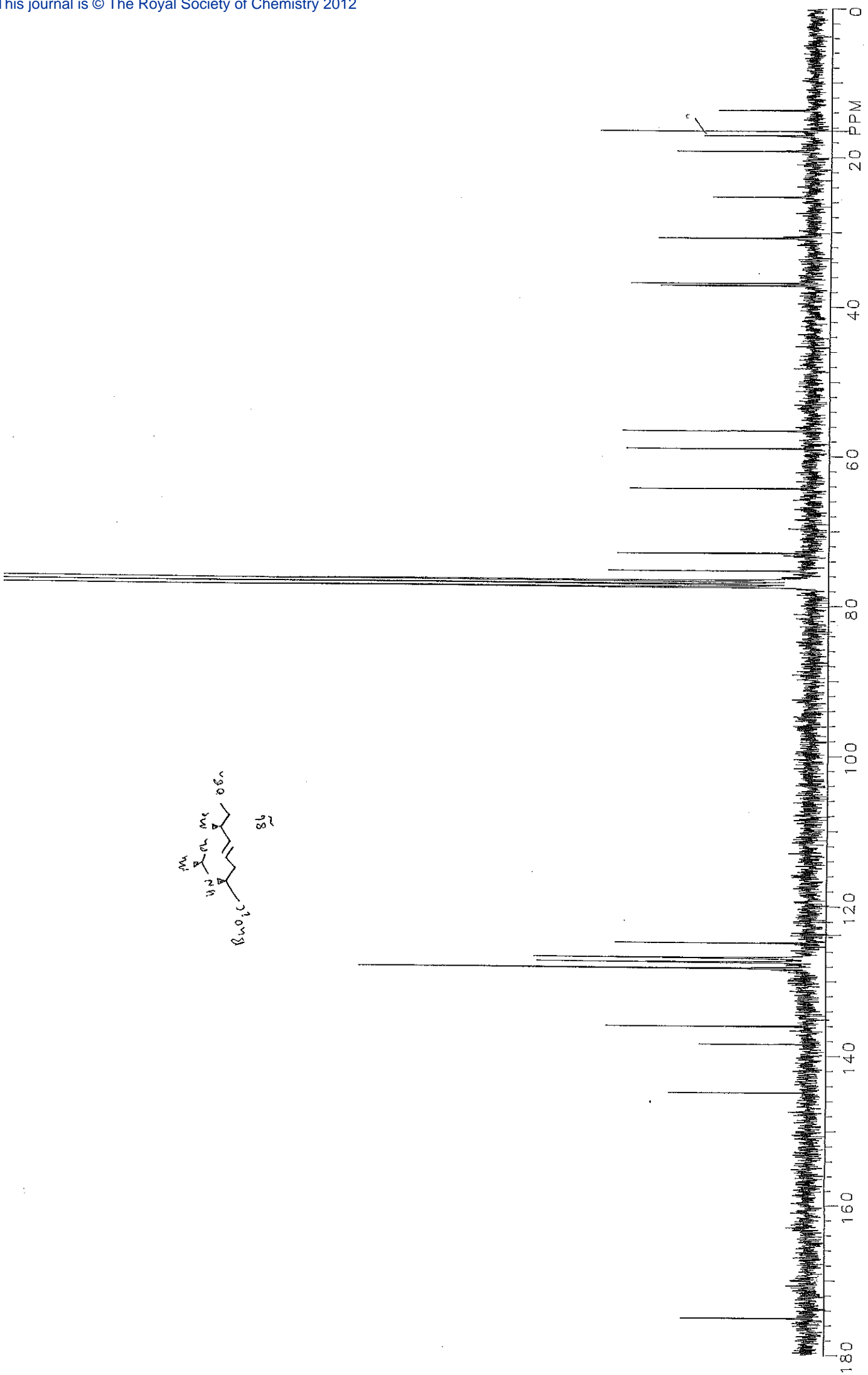
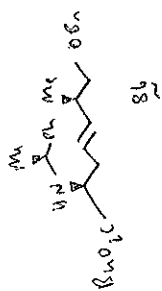


MS
D1
S0
D
PW
RD
AC
RG
NS
OZ
LB
CT
SR

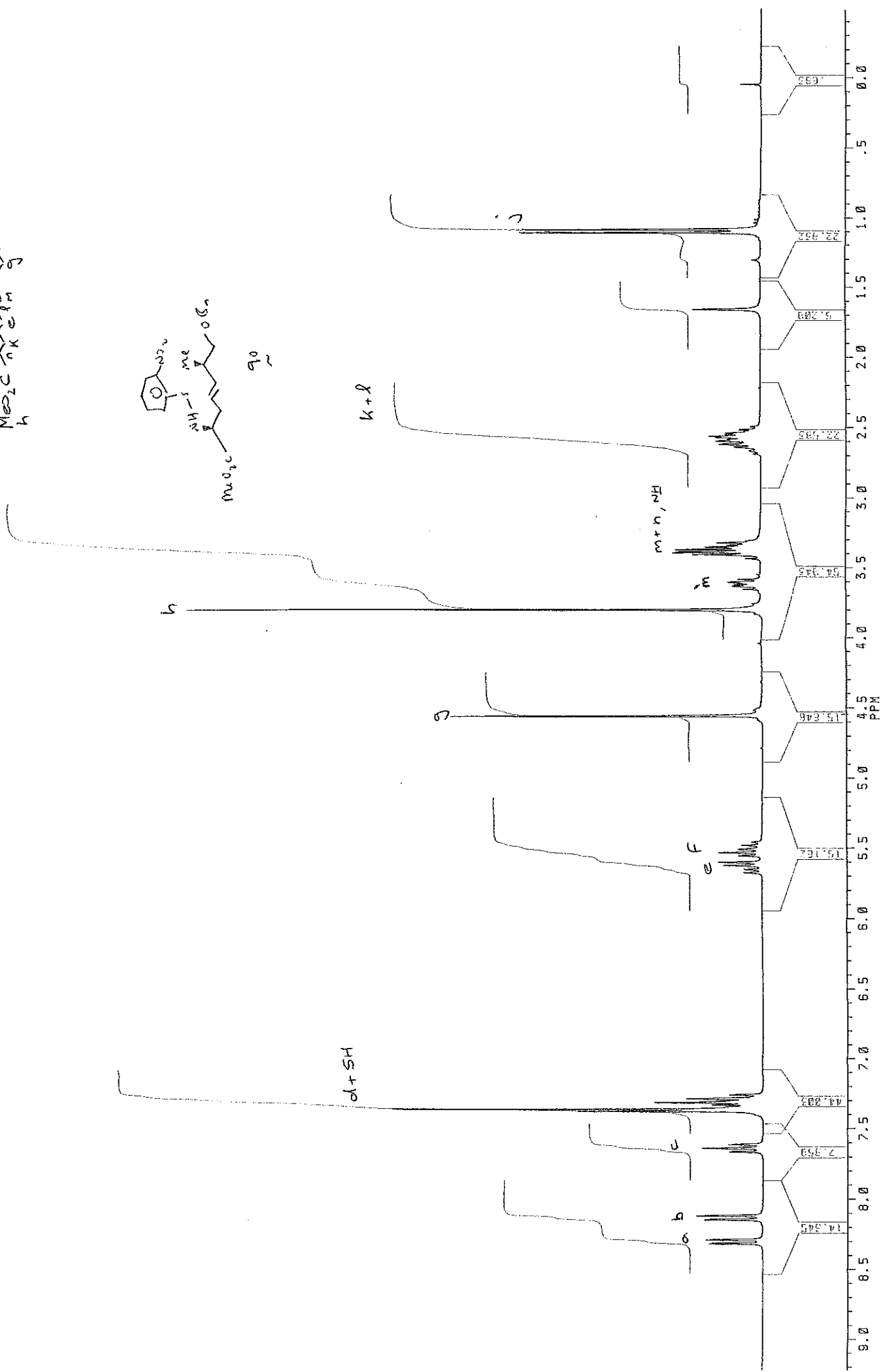
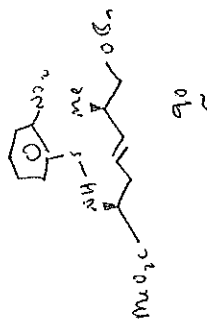
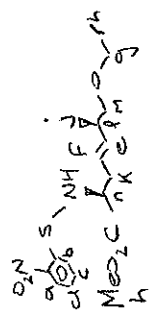


HNMPA
BuO₂C
F





HFTDZ
RUIOR
S
DATA
SF
DI
SI
TD
SW
PW
RD
AQ
RG
NS
DZ
DP
LB
CY
SR



17.116
17.035

37.038
36.837

52.264

63.698

75.032

75.100

76.023

77.045

77.468

123.595

123.644

124.688

125.231

127.542

127.605

128.354

133.253

138.201

138.266

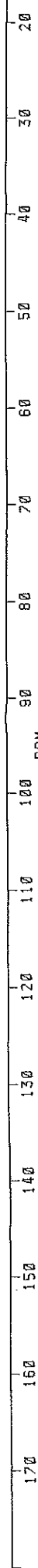
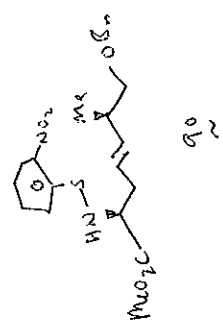
138.427

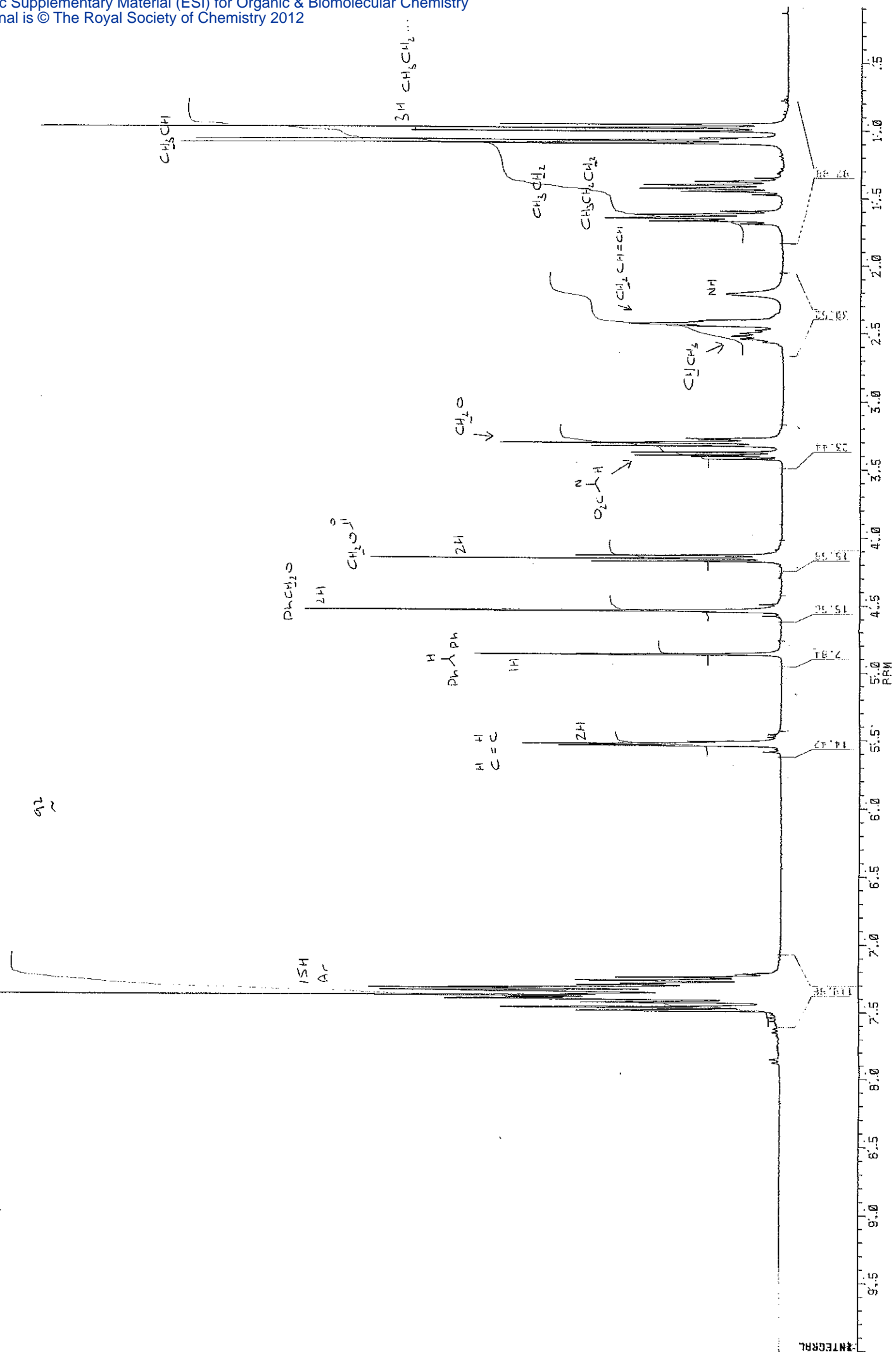
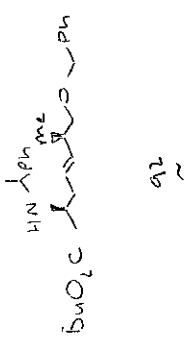
142.587

145.144

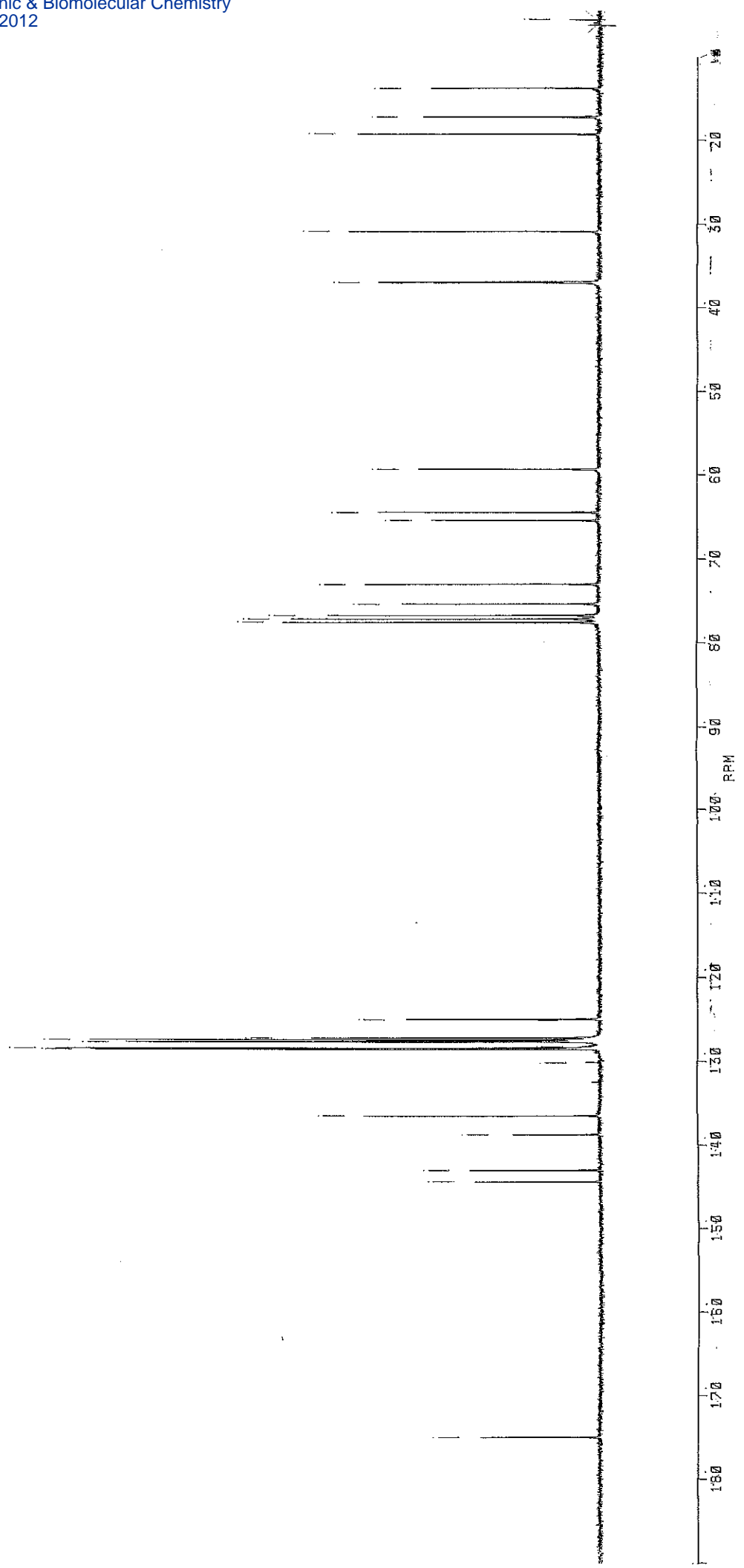
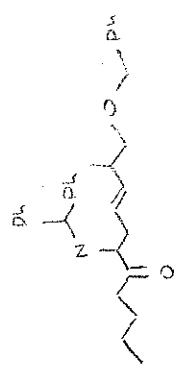
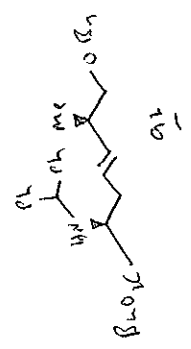
173.695

PPM



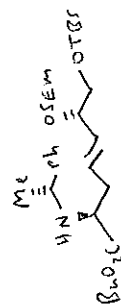
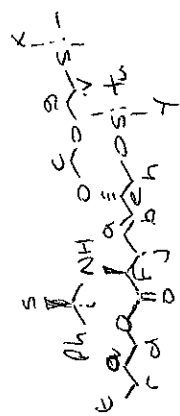


Chemical Shift (PPM)	Assignment
144.362	
142.958	
138.696	
136.423	
130.110	
128.543	
128.498	
128.383	
128.252	
127.687	
127.604	
127.512	
127.396	
127.195	
125.039	
124.956	
77.561	
77.130	
76.134	
75.348	
72.985	
65.416	
64.445	
59.327	
59.262	
37.038	
36.978	
36.929	
30.815	
19.220	
17.258	
17.200	
13.260	



S13 SUPPLEMENTARY FIGURE 1

PPM



t+n

v,x,y

SPH₂

g,h,i

d

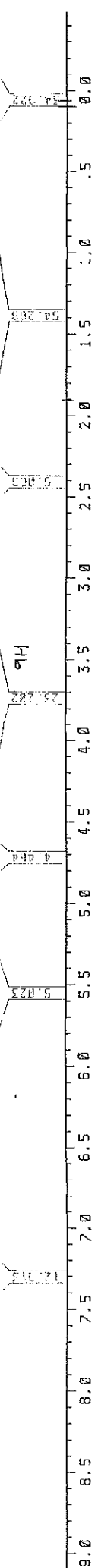
f

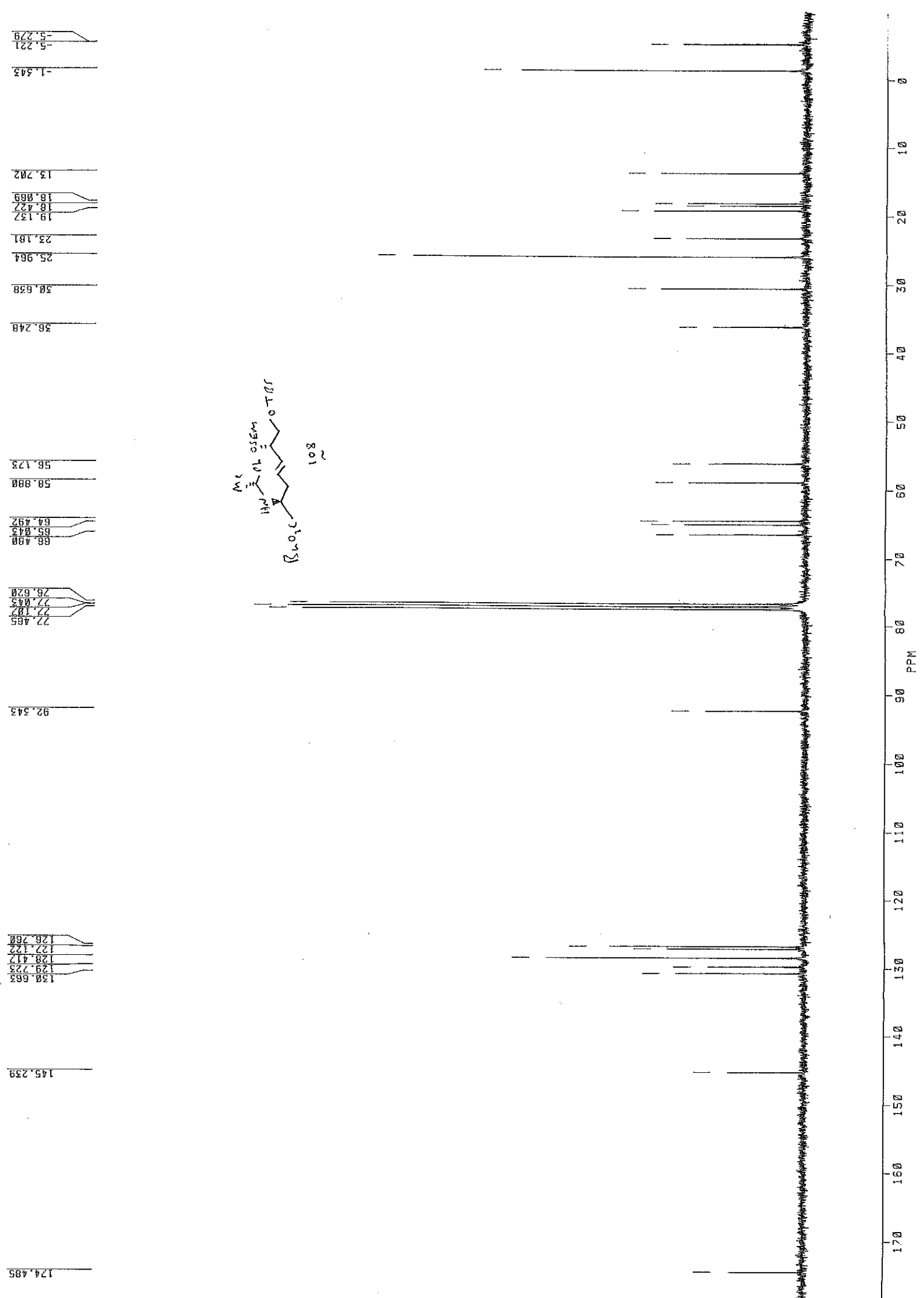
h

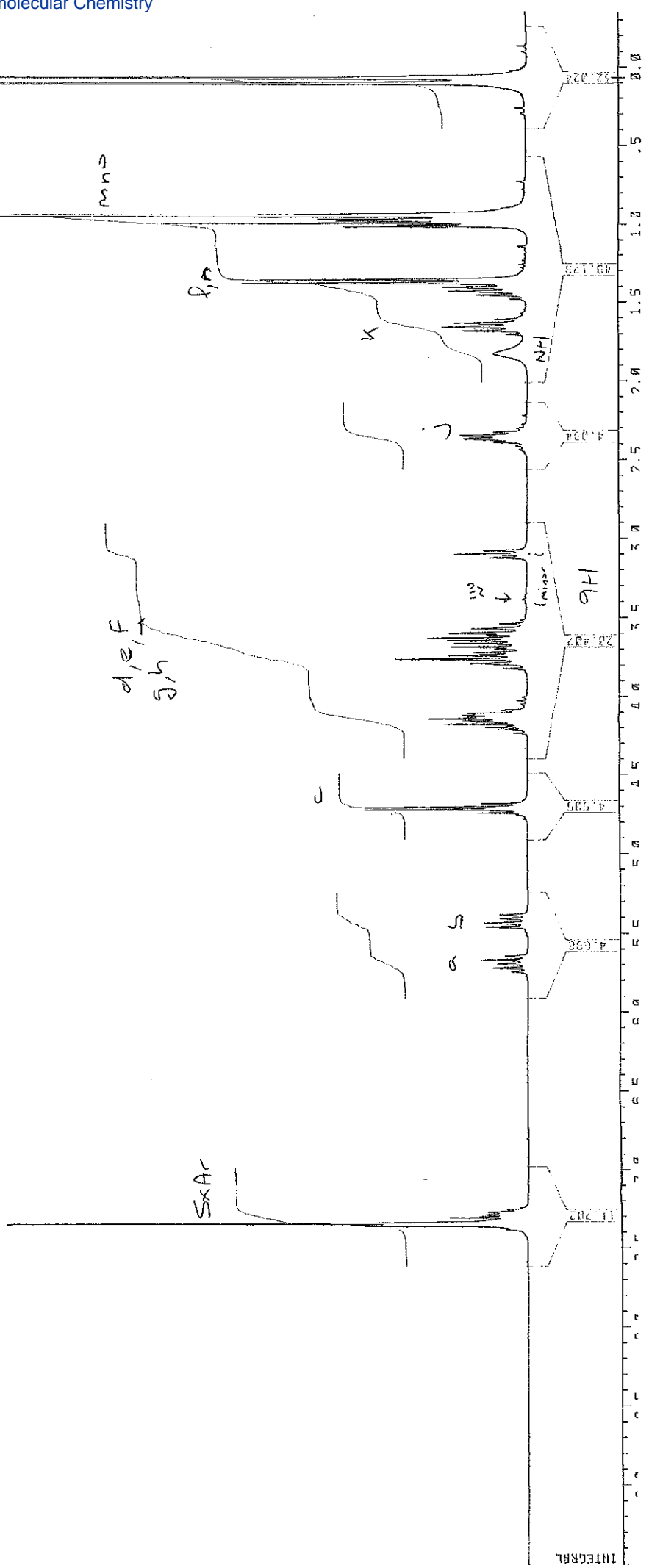
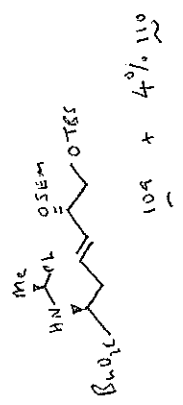
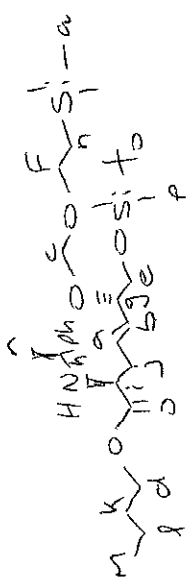
j

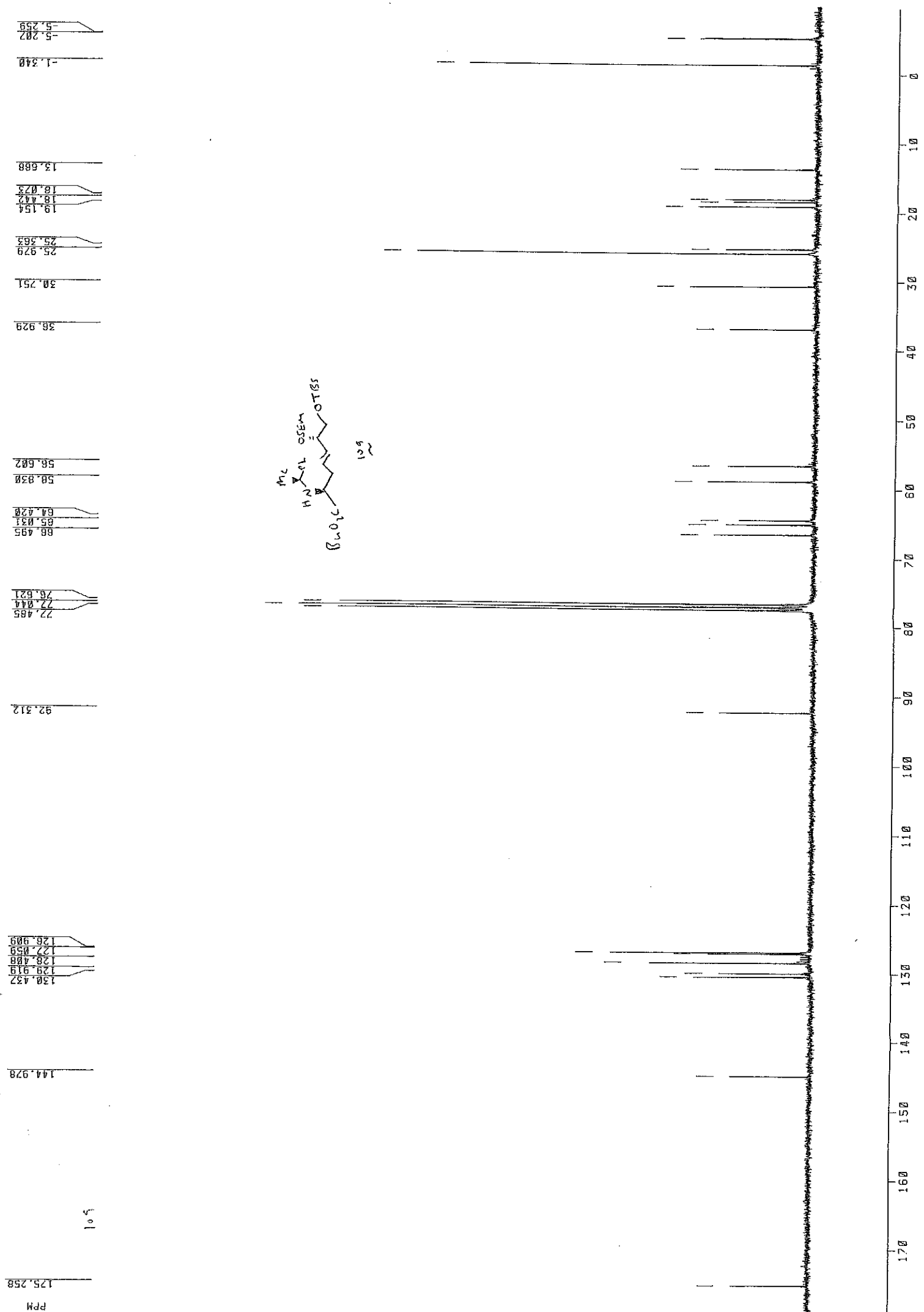
q

r+s









S01

HF
RU
SF
OT
SI
TD
SW
RW
RD
RC
MS
OZ
DP
LB
CY
SR

