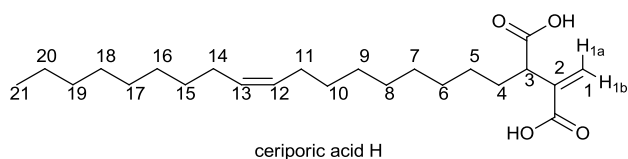


## Supporting information



### 3-[(Z)octadec-9-enyl]-itaconic acid (ceriporic acid H)

HMQC (600 MHz, CDCl<sub>3</sub>)  $\delta$  0.89/14.1 (H<sub>21</sub>/C<sub>21</sub>),  $\delta$  2.77/25.7 (H<sub>12</sub>/C<sub>12</sub>),  $\delta$  1.94

/27.2–27.4 (H<sub>9,15</sub>/C<sub>9,15</sub>),  $\delta$  3.43/46.9 (H<sub>3</sub>/C<sub>3</sub>),  $\delta$  5.34/ 129.8–129.9 (H<sub>12–13</sub>/ C<sub>12–13</sub>),

$\delta$  5.86 /129.8 (H<sub>1a</sub>/C<sub>1</sub>),  $\delta$  6.55/129.8 (H<sub>1b</sub>/C<sub>1</sub>)

HMBC (600 MHz, CDCl<sub>3</sub>)  $\delta$  0.89/22.7 (H<sub>21</sub>/C<sub>20</sub>),  $\delta$  0.89/31.9 (H<sub>21</sub>/C<sub>19</sub>),  $\delta$

1.27–1.31/29.2–30.0 (H<sub>5–10</sub>, H<sub>15–20</sub>/C<sub>4–10</sub>, C<sub>15–18</sub>),  $\delta$  1.73/29.2–30.0 (H<sub>4</sub>/C<sub>5</sub>),  $\delta$

1.94/29.2–30.0 (H<sub>4</sub>/C<sub>5</sub>),  $\delta$  1.73/46.9 (H<sub>4</sub>/C<sub>3</sub>),  $\delta$  1.73/137.3 (H<sub>4</sub>/C<sub>5</sub>),  $\delta$  1.73/179.7

(H<sub>4</sub>/3-COOH),  $\delta$  1.94/29.2–29.7 (H<sub>4</sub>/C<sub>5</sub>),  $\delta$  1.94/29.2–29.7 (H<sub>4</sub>/C<sub>5</sub>),  $\delta$  1.94/46.9

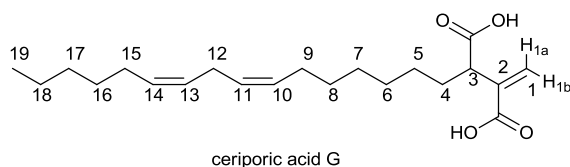
(H<sub>4</sub>/C<sub>3</sub>),  $\delta$  1.94/137.3 (H<sub>4</sub>/C<sub>5</sub>),  $\delta$  1.94/179.7 (H<sub>4</sub>/3-COOH),  $\delta$  2.00–2.01/129.8–129.9

(H<sub>11</sub>,H<sub>14</sub>/C<sub>12</sub>, C<sub>13</sub>),  $\delta$  3.43/129.8 (H<sub>3</sub>/C<sub>1</sub>),  $\delta$  3.43/137.3 (H<sub>3</sub>/C<sub>2</sub>),  $\delta$  3.43/171.8

(H<sub>3</sub>/2-COOH),  $\delta$  5.34/27.2–27.4 (H<sub>12</sub>,H<sub>13</sub>/C<sub>11</sub>,C<sub>14</sub>),  $\delta$  5.86/46.9 (H<sub>1a</sub>/C<sub>3</sub>),  $\delta$

5.86/137.3 (H<sub>1a</sub>/C<sub>2</sub>),  $\delta$  5.86/171.8 (H<sub>1a</sub>/2-COOH),  $\delta$  6.55/46.9 (H<sub>1b</sub>/C<sub>3</sub>),  $\delta$  6.55/137.3

(H<sub>1b</sub>/C<sub>2</sub>),  $\delta$  6.55/179.7 (H<sub>1b</sub>/3-COOH)



### 3-[(Z,Z)-hexadec-7,10-dienyl]-itaconate (ceriporic acid G)

HMQC (600 MHz, CDCl<sub>3</sub>)  $\delta$  0.89/14.2 (H19/C19),  $\delta$  2.77/25.7 (H12/C12),  $\delta$  3.37/47.5

(H3/C3),  $\delta$  2.04/27.3 (H9,15/C9,15),  $\delta$  1.72/29.2-29.7 (H4/C4),  $\delta$  5.34/128.0-130.3

(H10, H11, H13, H14/C11,C13, C10, C14),  $\delta$  5.81/129.7 (H1<sub>a</sub>/C1),  $\delta$  6.52/129.7

(H1<sub>b</sub>/C1)

HMBC (600 MHz, CDCl<sub>3</sub>)  $\delta$  0.89/22.7 (H19/C18),  $\delta$  0.89/31.6 (H19/C17),  $\delta$

1.72/29.2-29.7 (H4/C5),  $\delta$  3.37/29.2-29.7 (H3/C4),  $\delta$  3.37/129.7 (H3/C1),  $\delta$  3.37/137.5

(H3/C2),  $\delta$  3.37/171.9 (H3/2-COOH),  $\delta$  3.37/179.9 (H3/3-COOH),  $\delta$  5.34/27.3 (H10,

H11, H13, H14/C9,15),  $\delta$  5.81/47.5 (H1<sub>a</sub>/C3),  $\delta$  6.52/47.5 (H1<sub>b</sub>/C3),  $\delta$  6.52/137.5

(H1<sub>b</sub>/C2),  $\delta$  5.81/171.9 (H1<sub>a</sub>/2-COOH),  $\delta$  6.52/179.9 (H1<sub>b</sub>/2-COOH),  $\delta$

2.77/128.0-128.2 (H12/C11,C13),  $\delta$  3.37/129.7 (H3/C1),  $\delta$  1.32/130.1-130.3 (H5-8,

H16-18/C10, C14)