

Supplementary Material

Synthesis of CDE molecular fragments related to Sendanin mediated by Titanocene (III)

A. Fernández-Mateos,^{*,a} A. I. Ramos Silvo,^a R. Rubio González,^a M. S. J. Simmonds

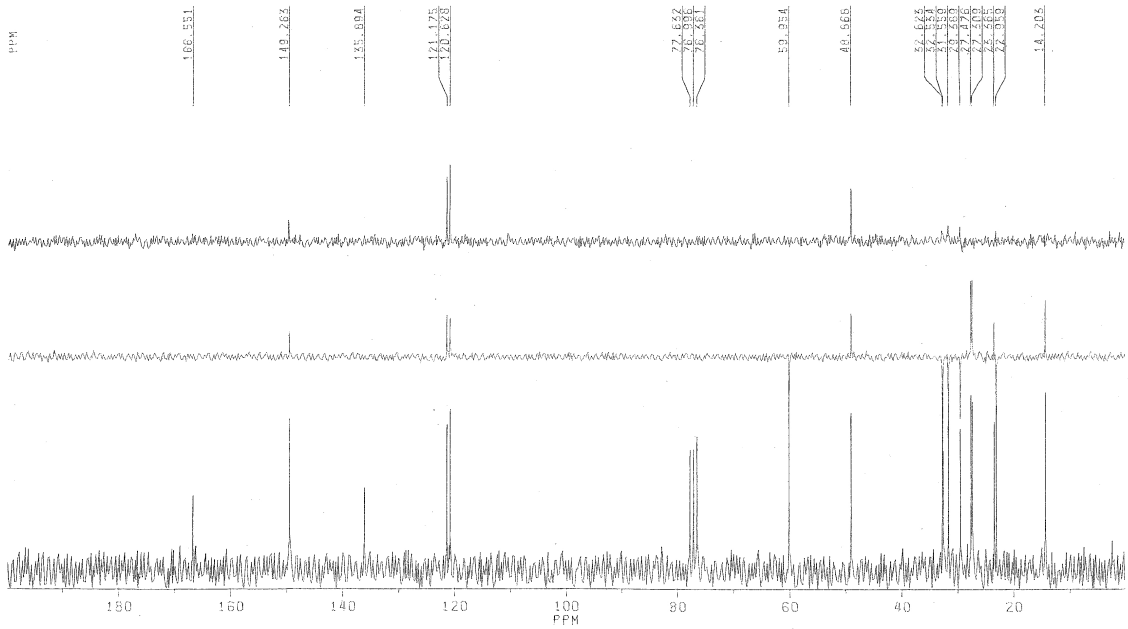
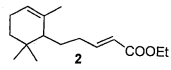
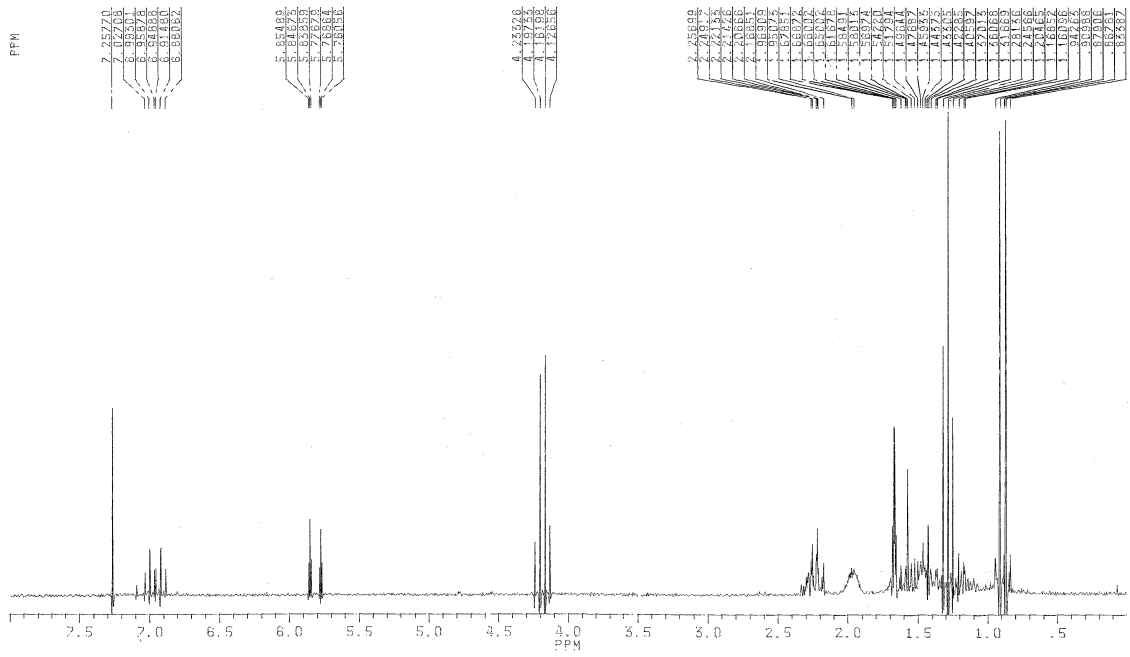
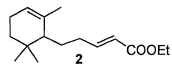
^a *Departamento de Química Orgánica. Facultad de CC. Químicas. Universidad de Salamanca. Plaza de los Caídos 1-5, 37008 Salamanca (Spain).*

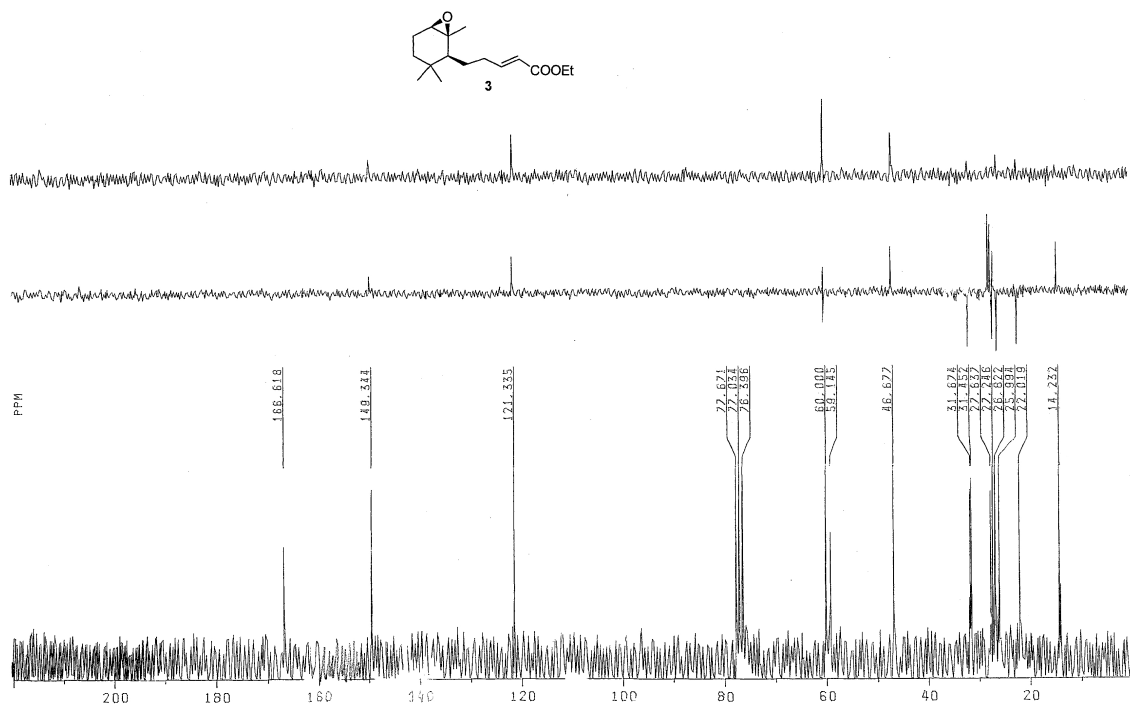
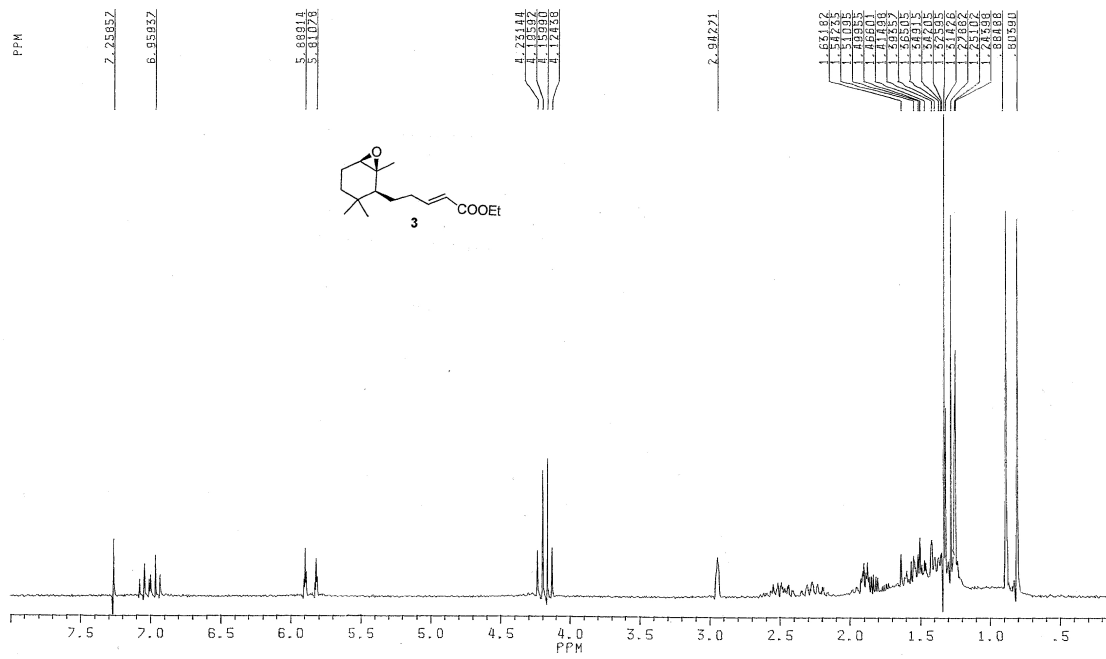
Fax: (+34) 923294574; Tel: (+34)923294481; E-mail: afmateos@usal.es

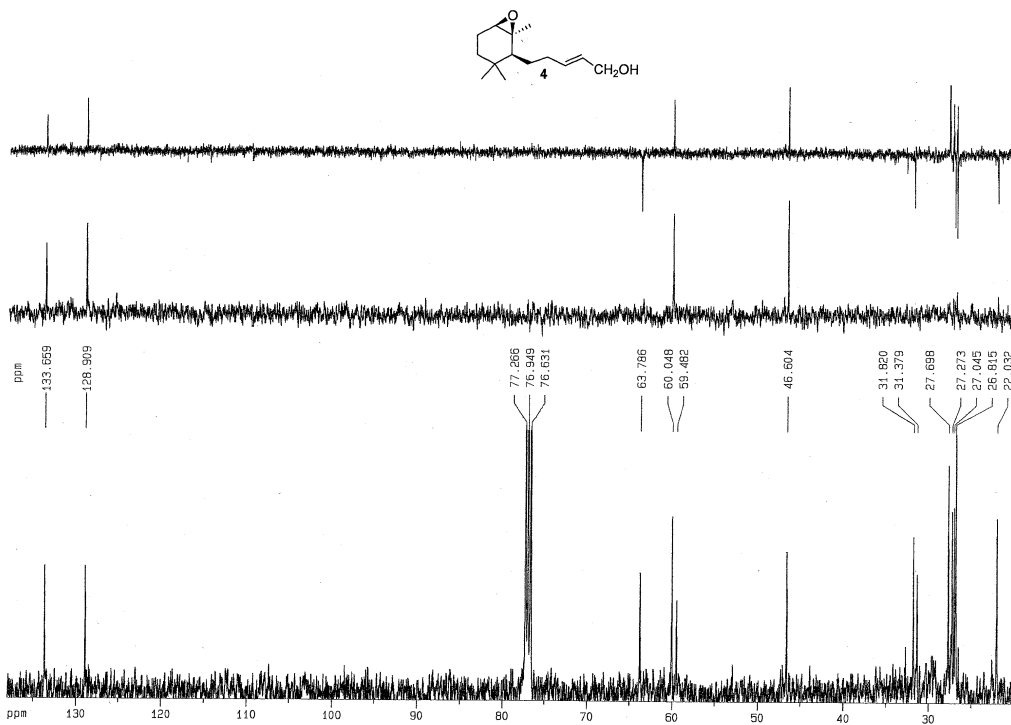
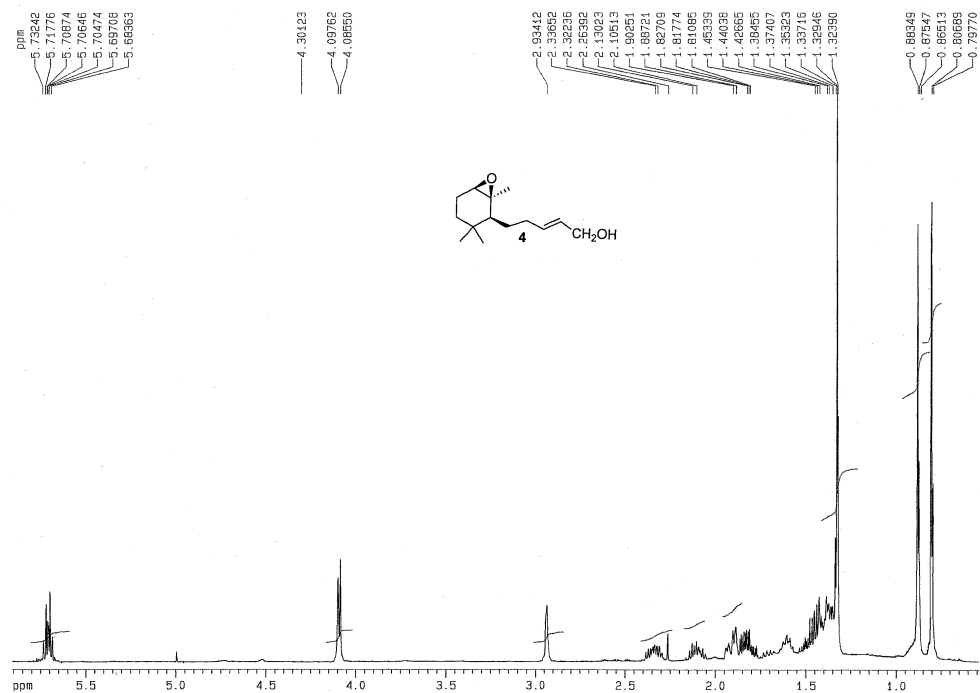
^b *Jodrell Laboratory, Royal Botanic Garden, Kew, Richmond, Surrey, UK.*

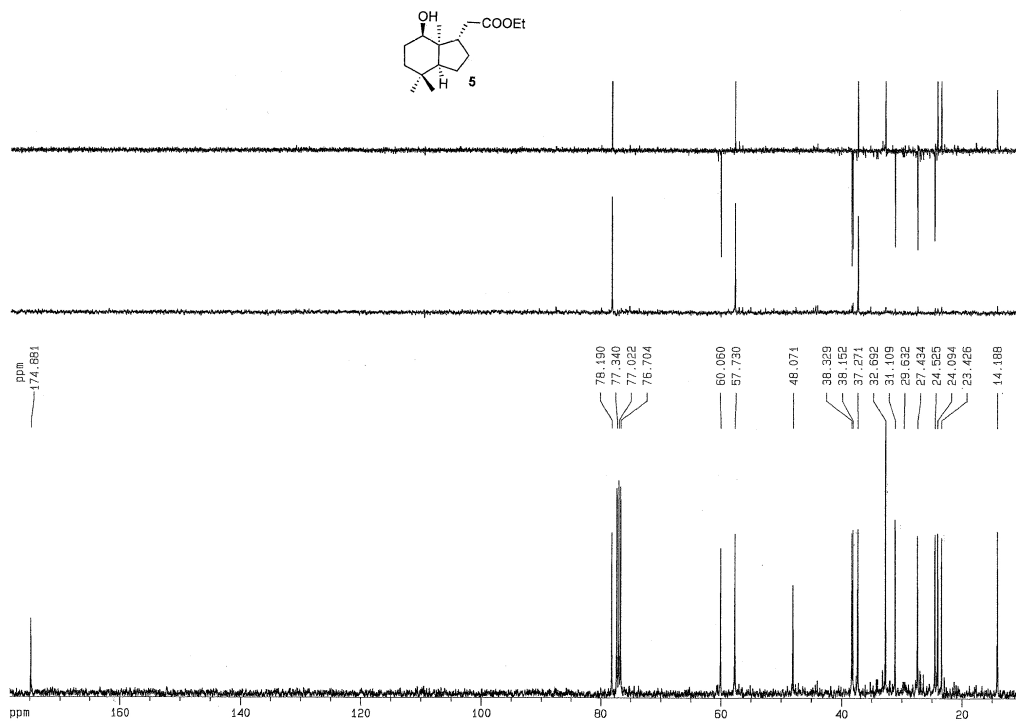
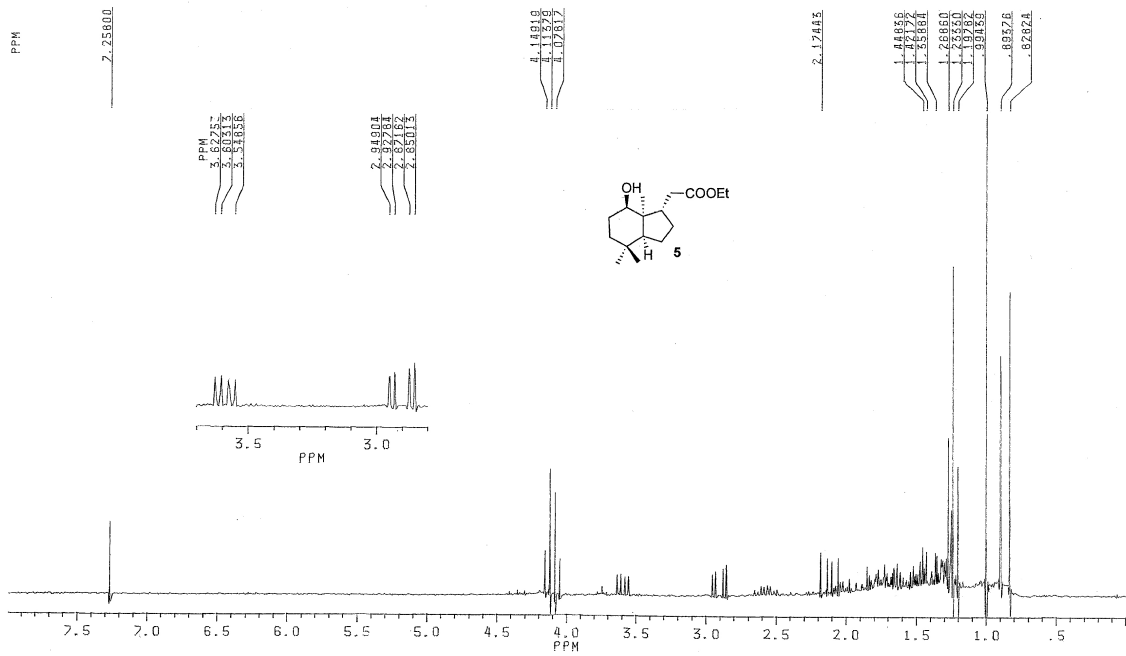
List of Contents:

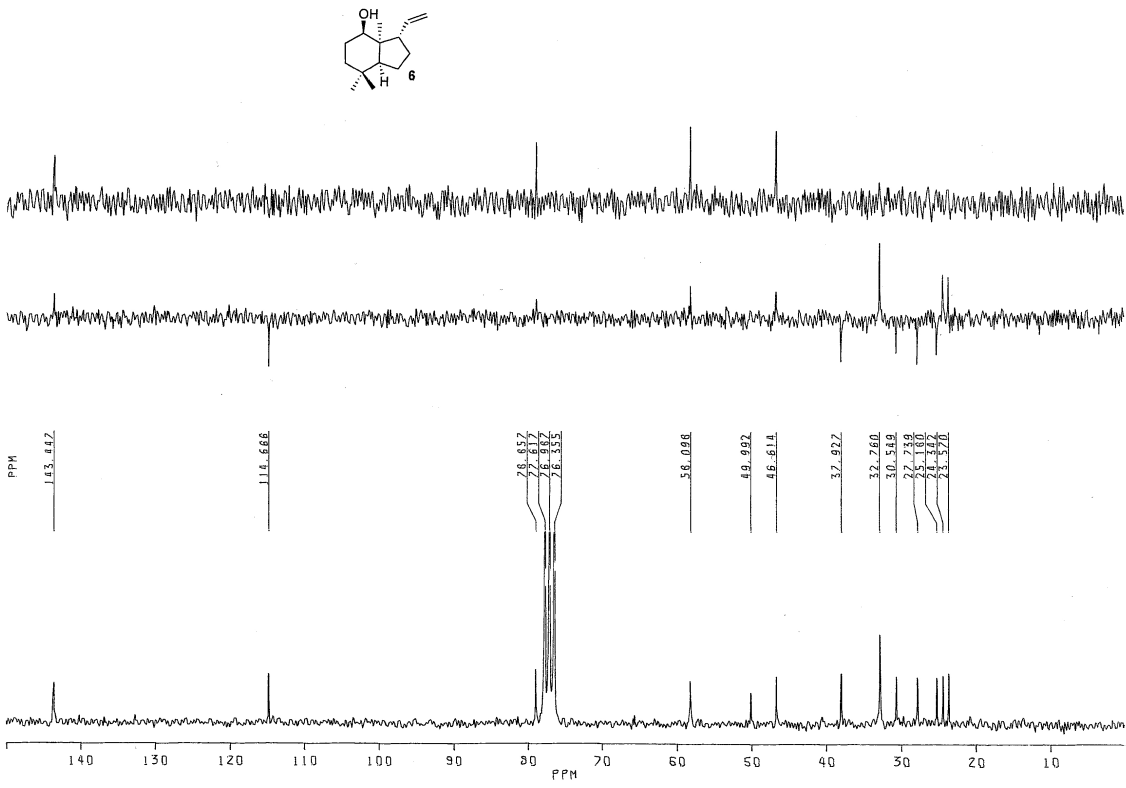
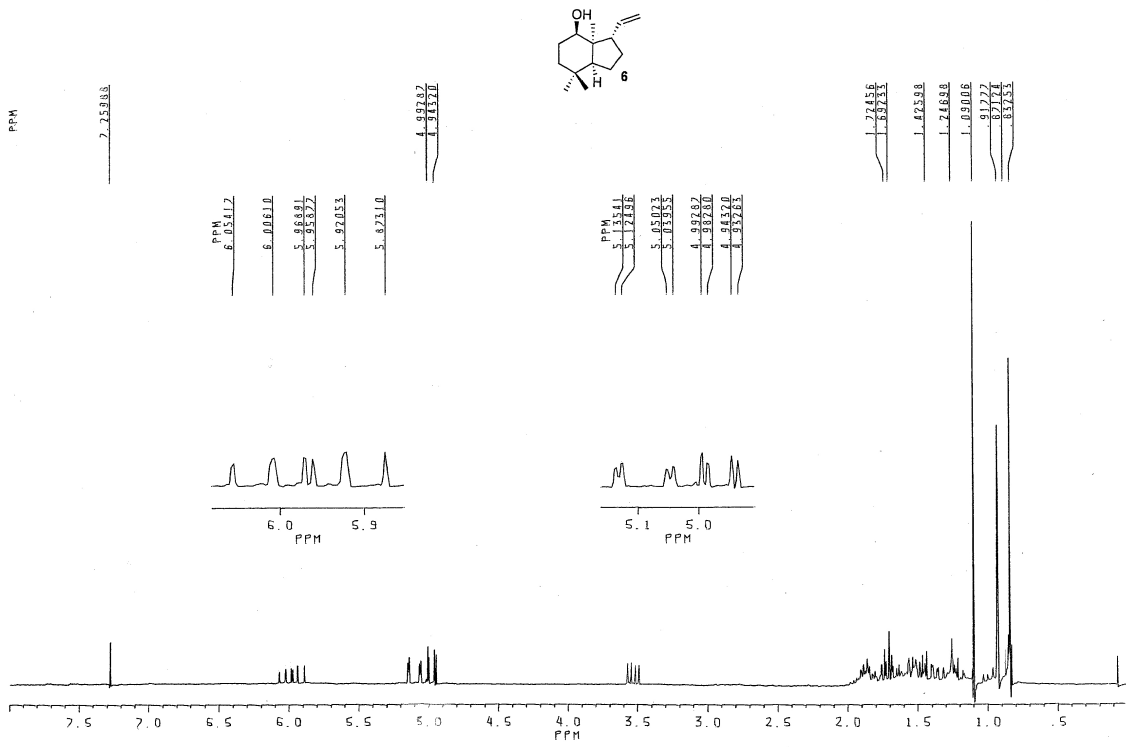
¹ H and ¹³ C NMR spectra for compounds 2 , 3 , 4 , 5 , 6 , 11 , 12a , 12b , 13a , 13b , 15 , 16 , 17 , 18 , and 19	S2-S16
HMQC and HMBC correlation data for compounds 5 , 6 , 13a and 13b	S17-S18

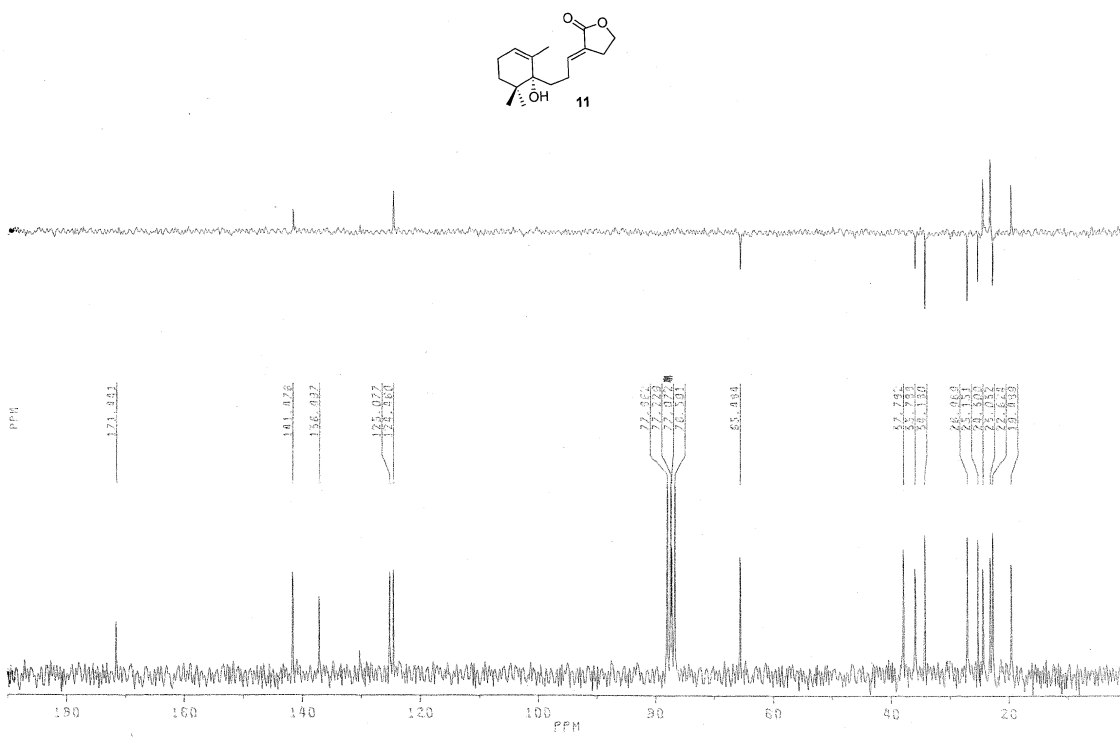
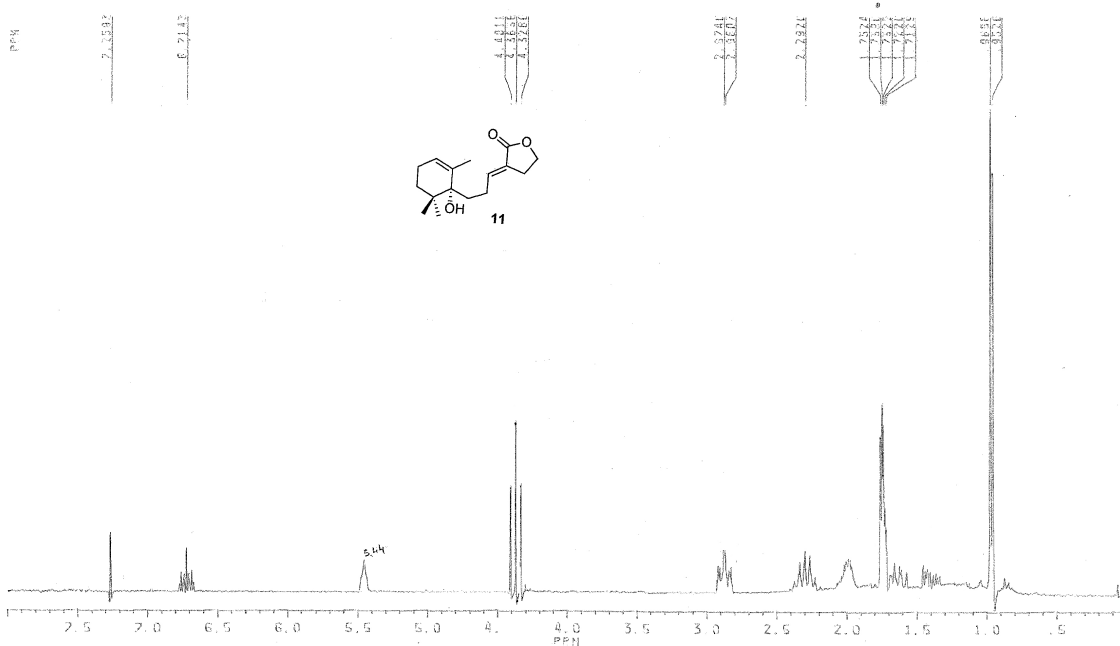


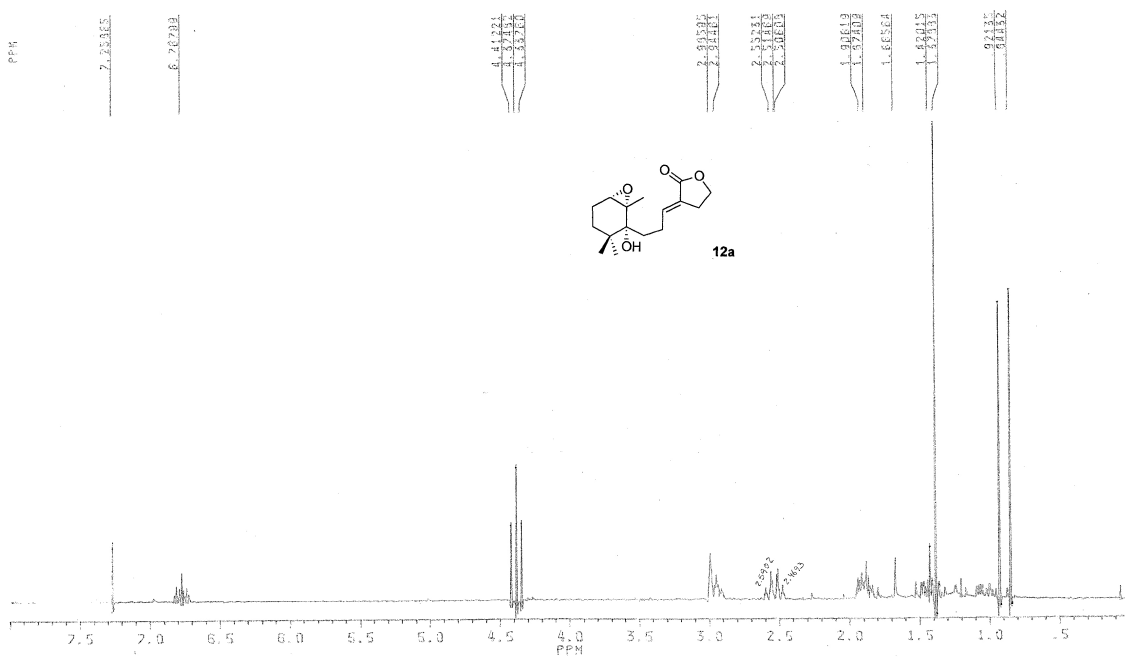




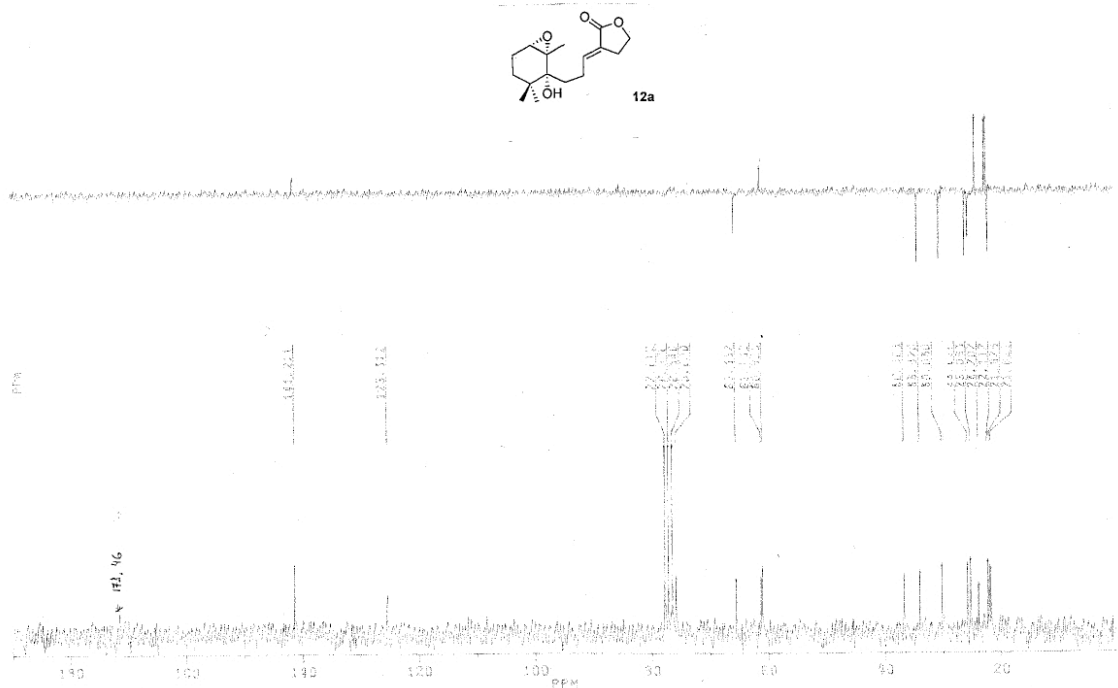


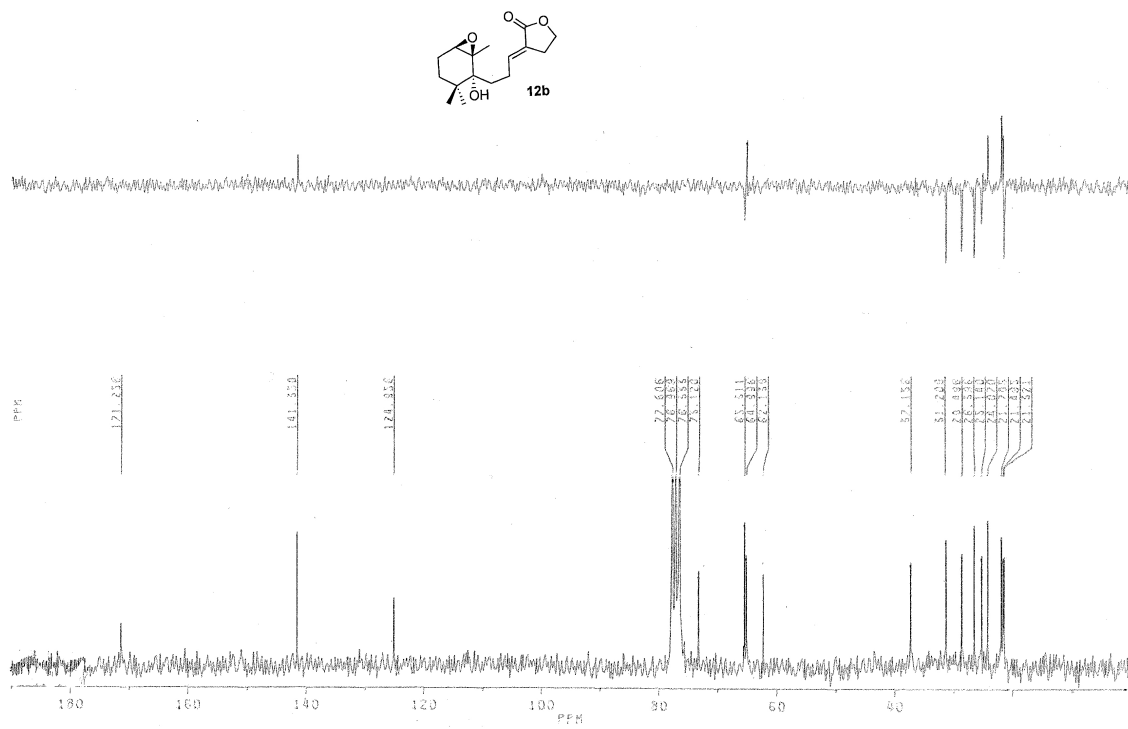
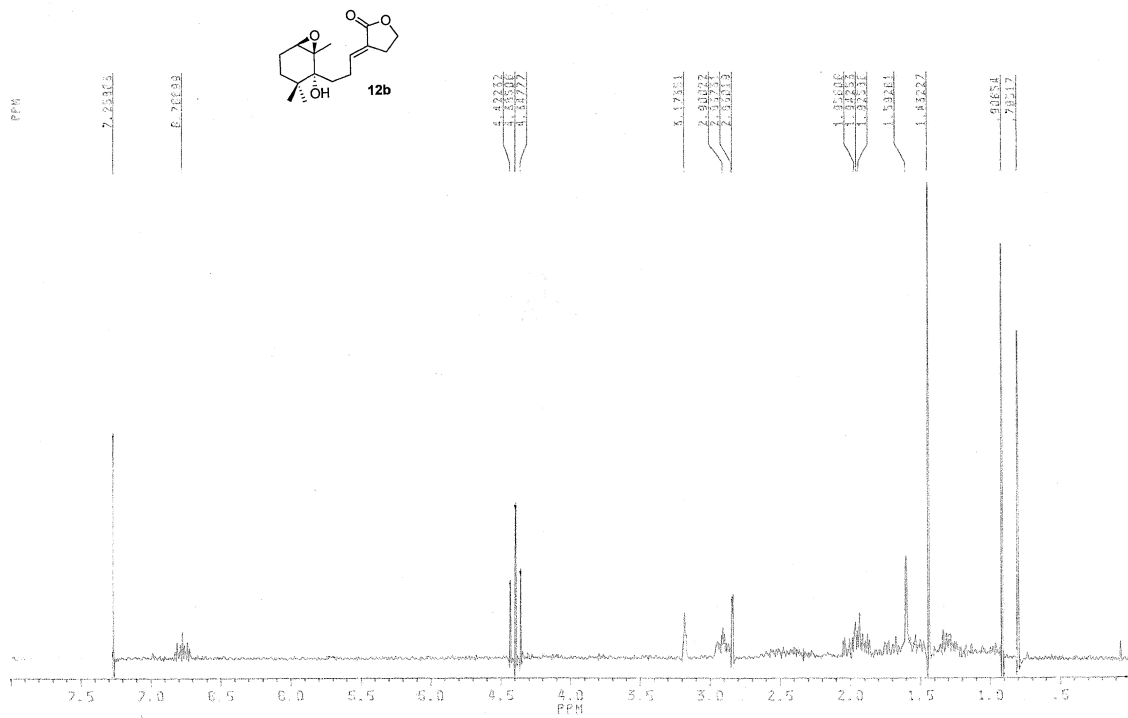


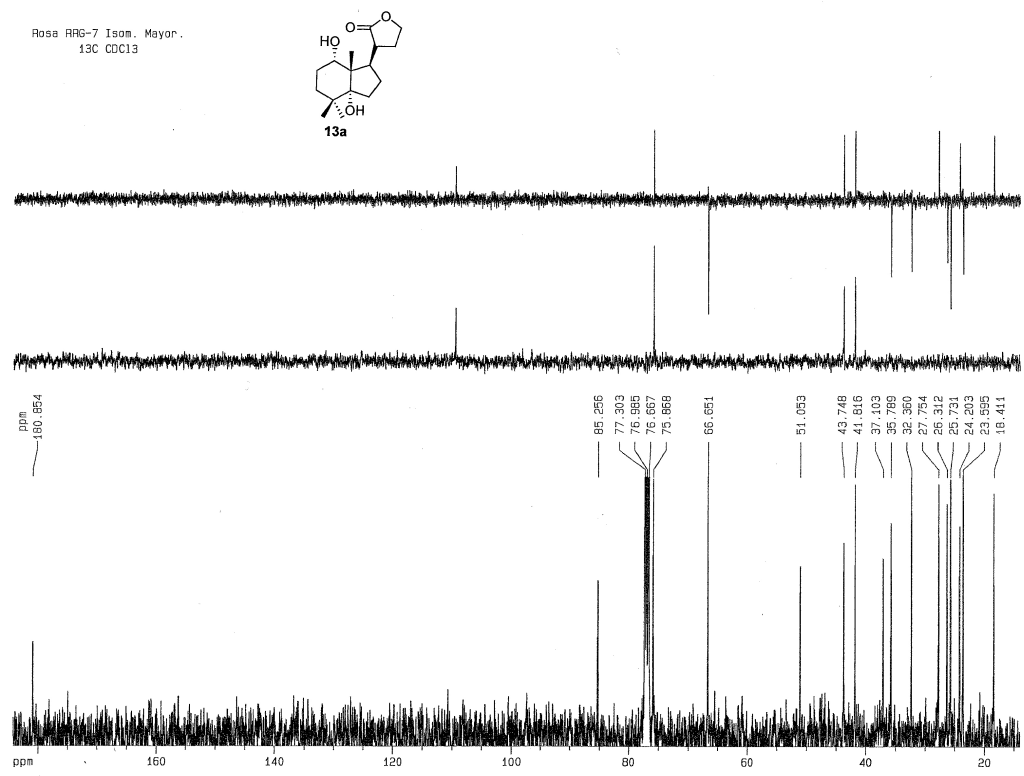
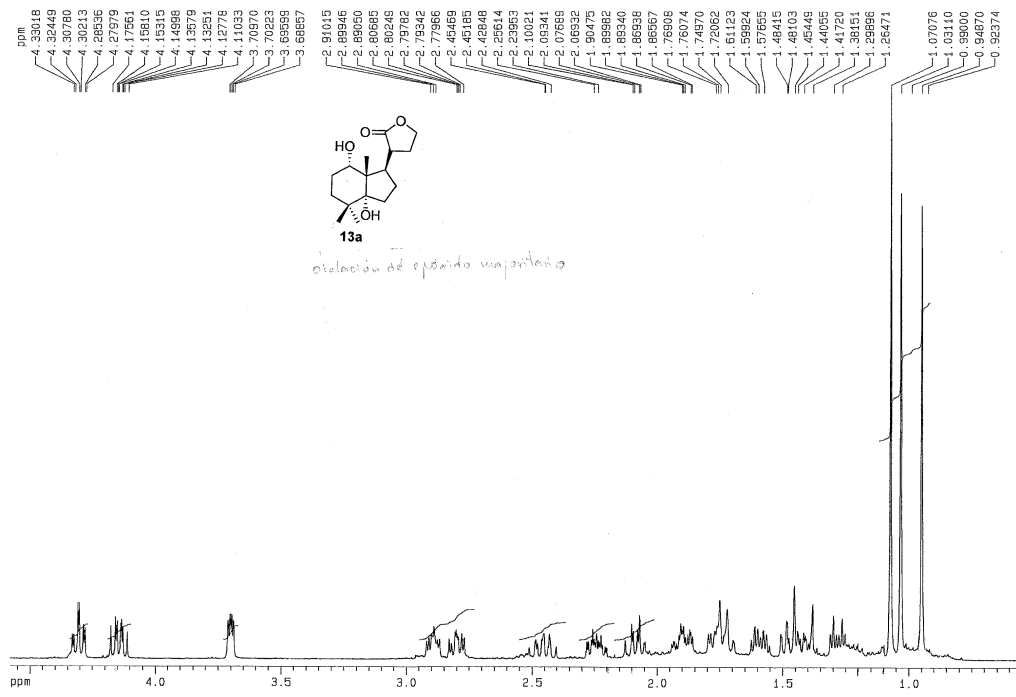


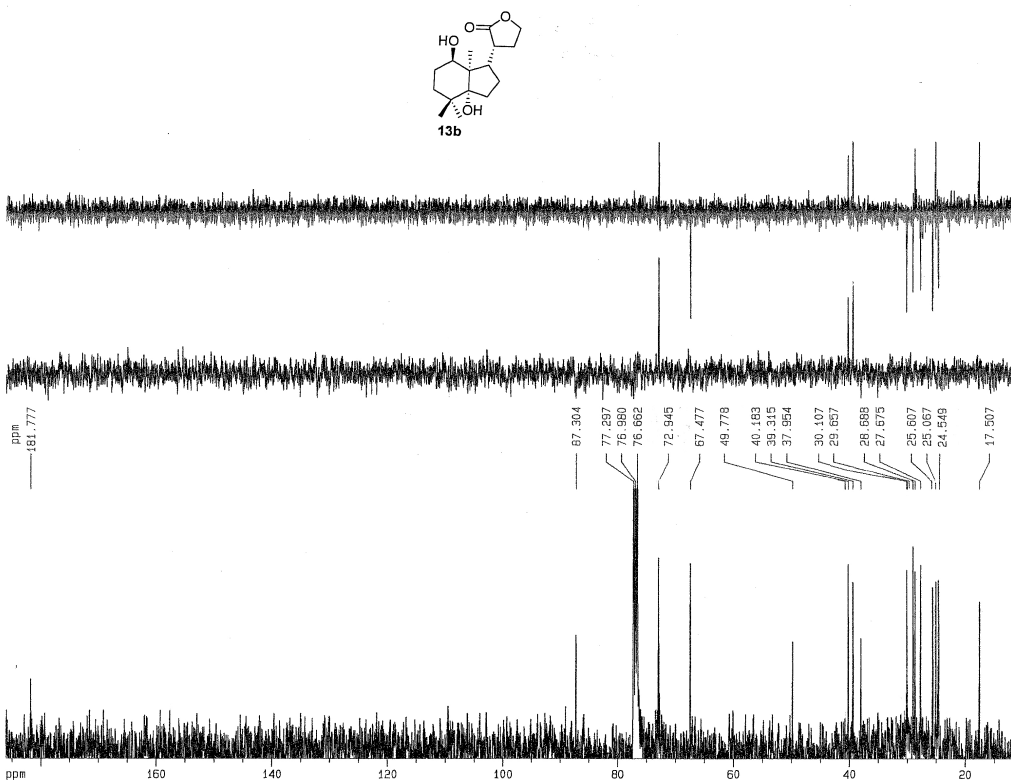
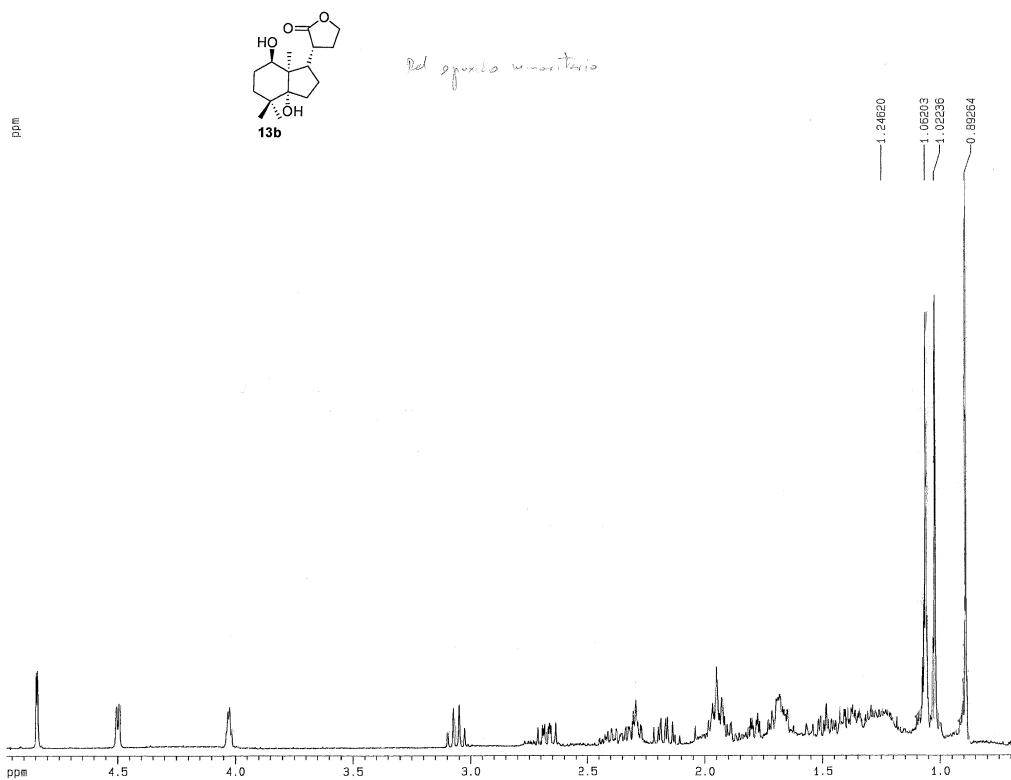


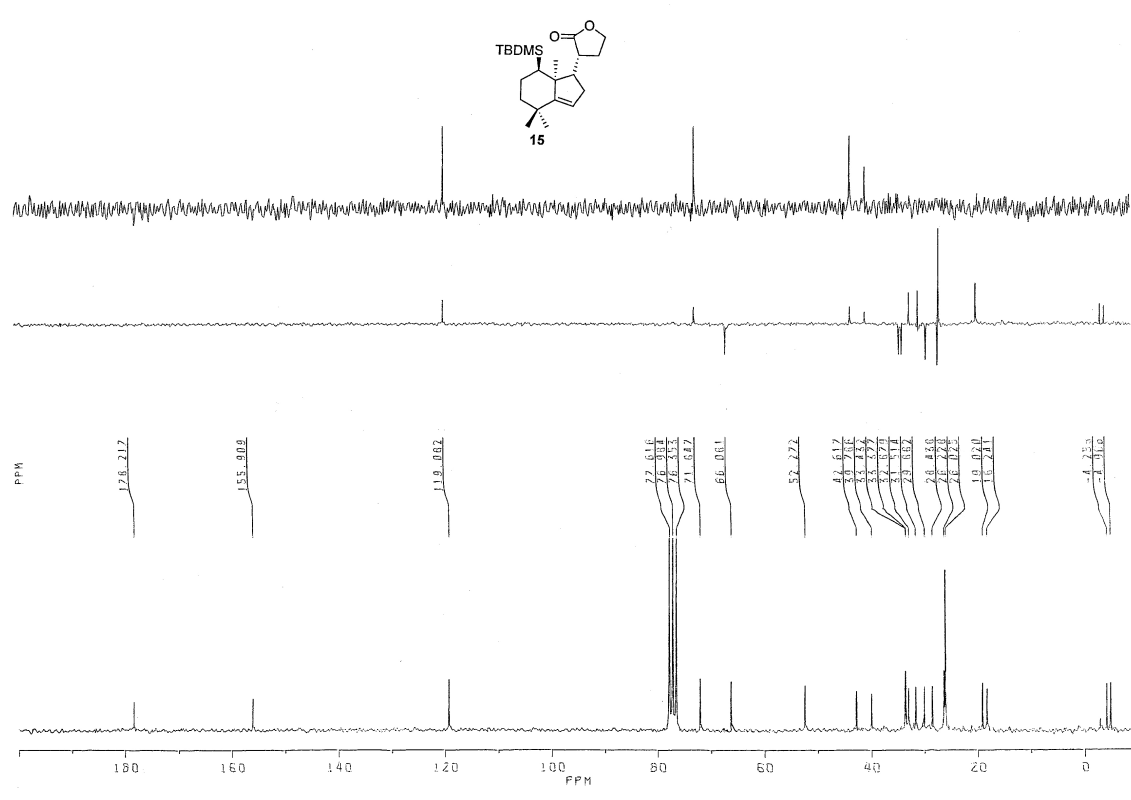
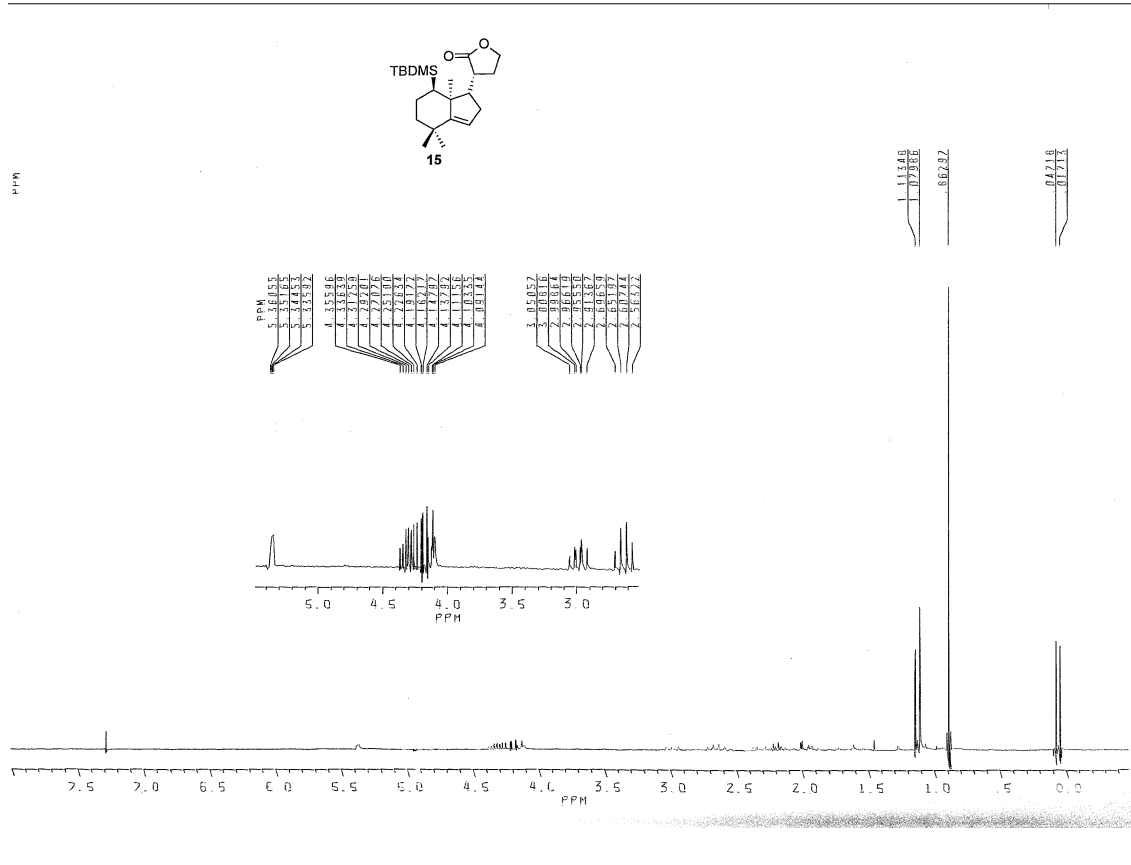
4

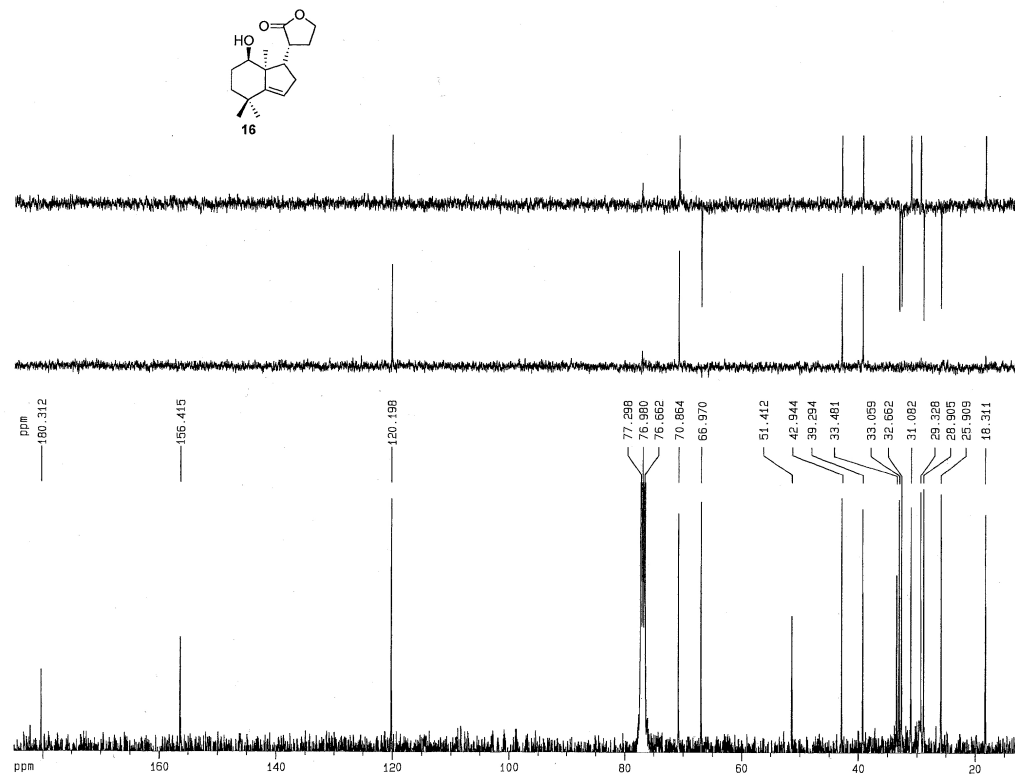
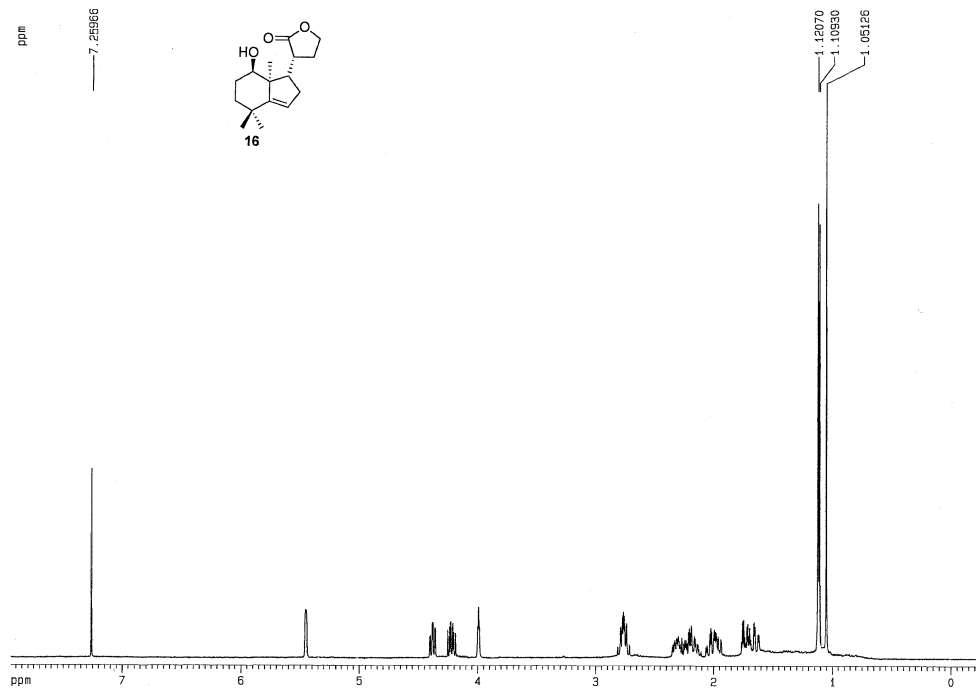


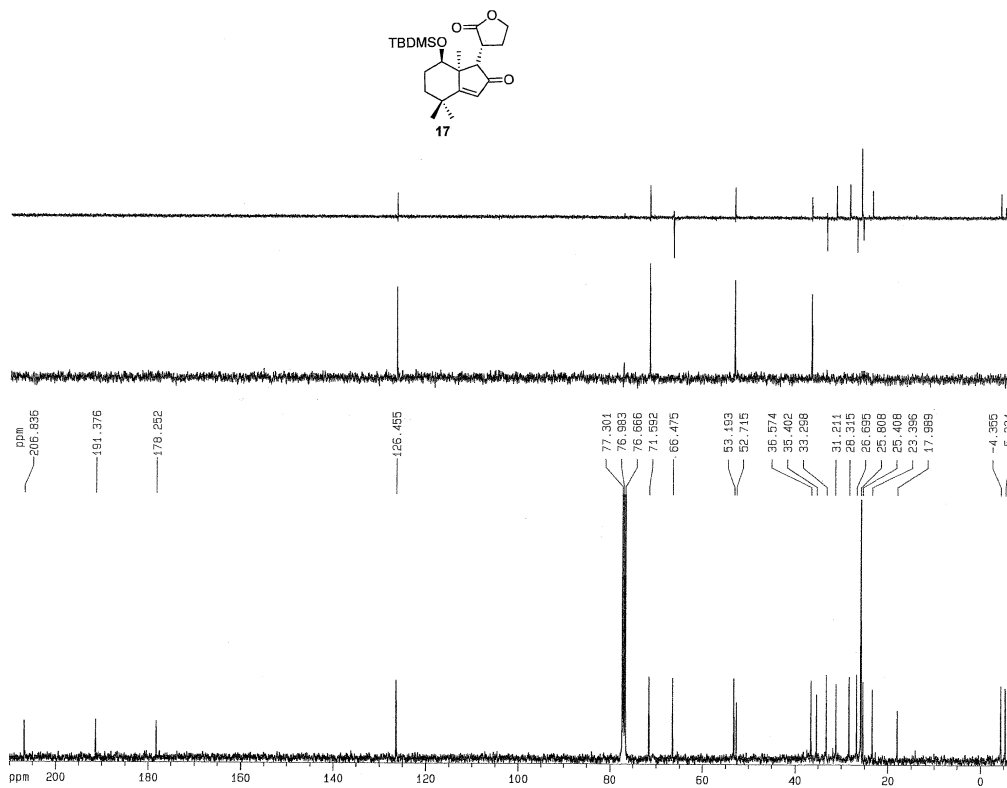
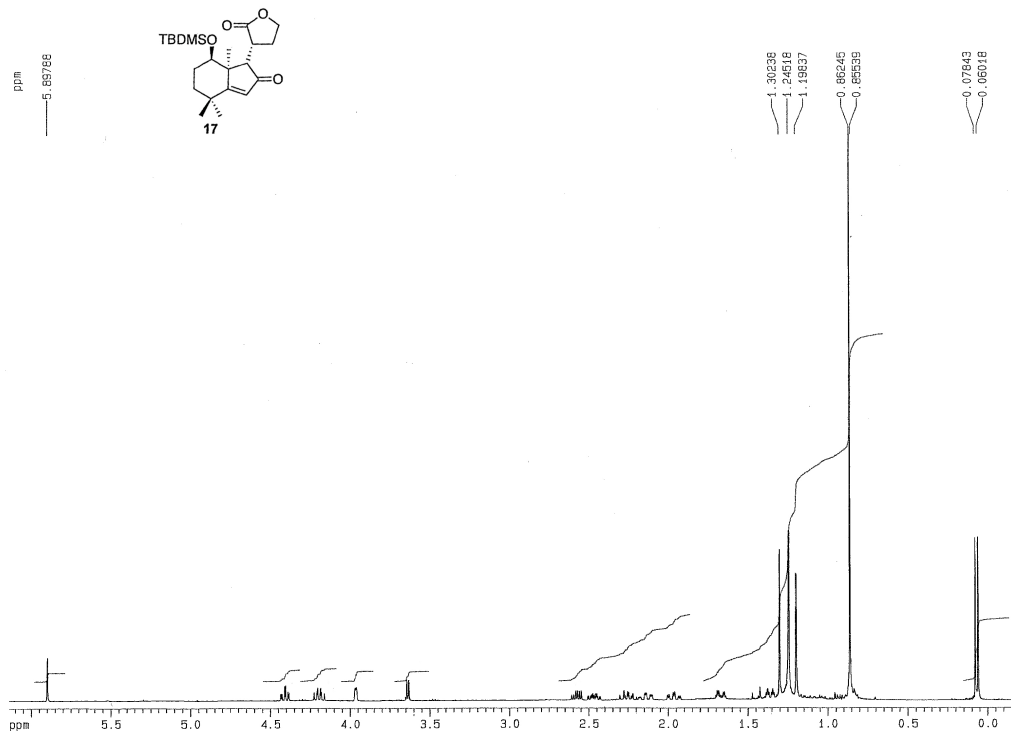


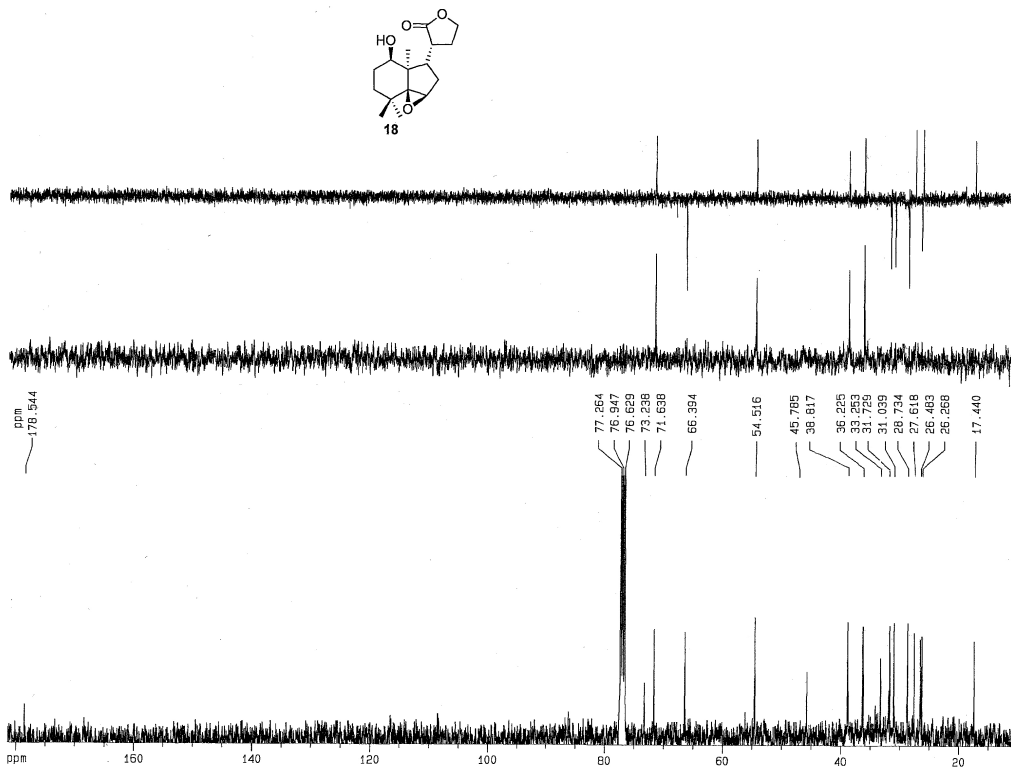
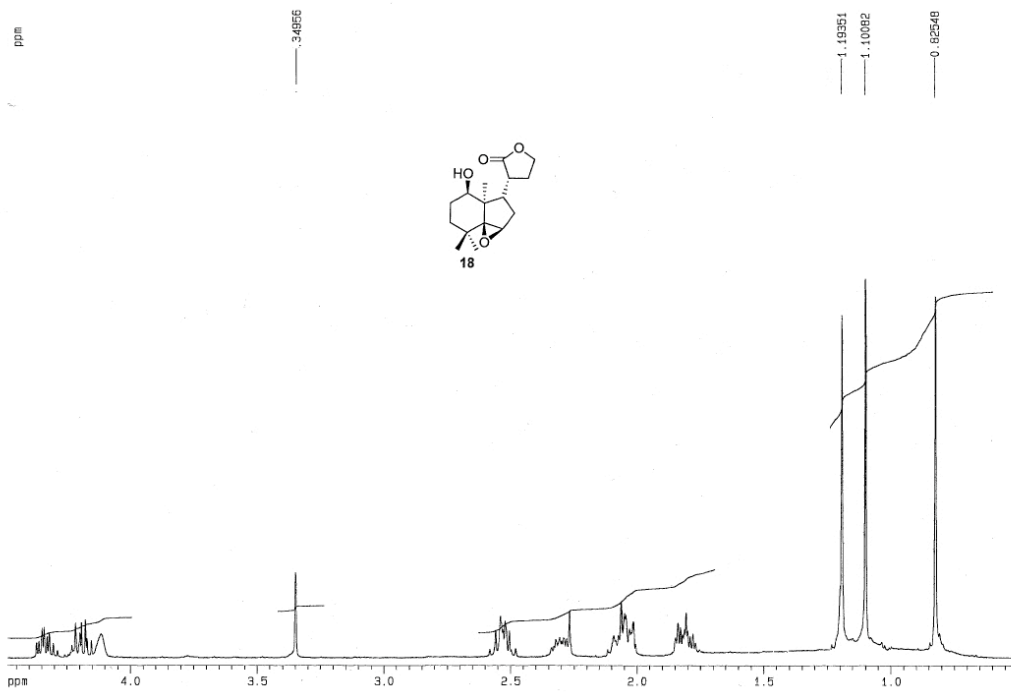


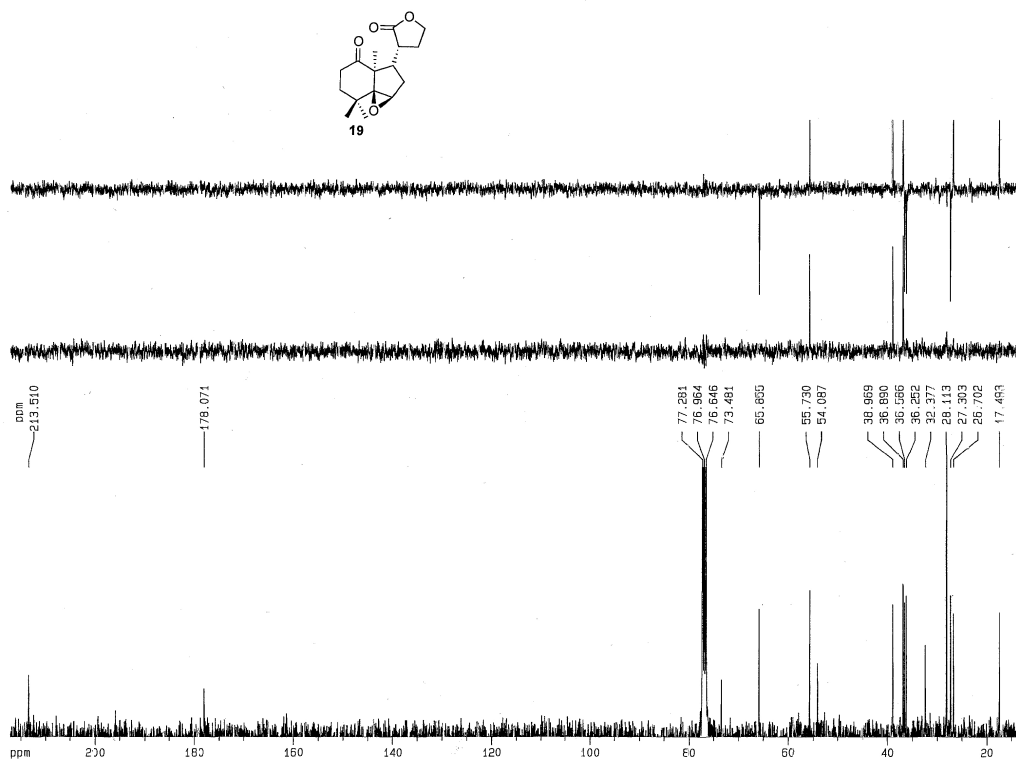
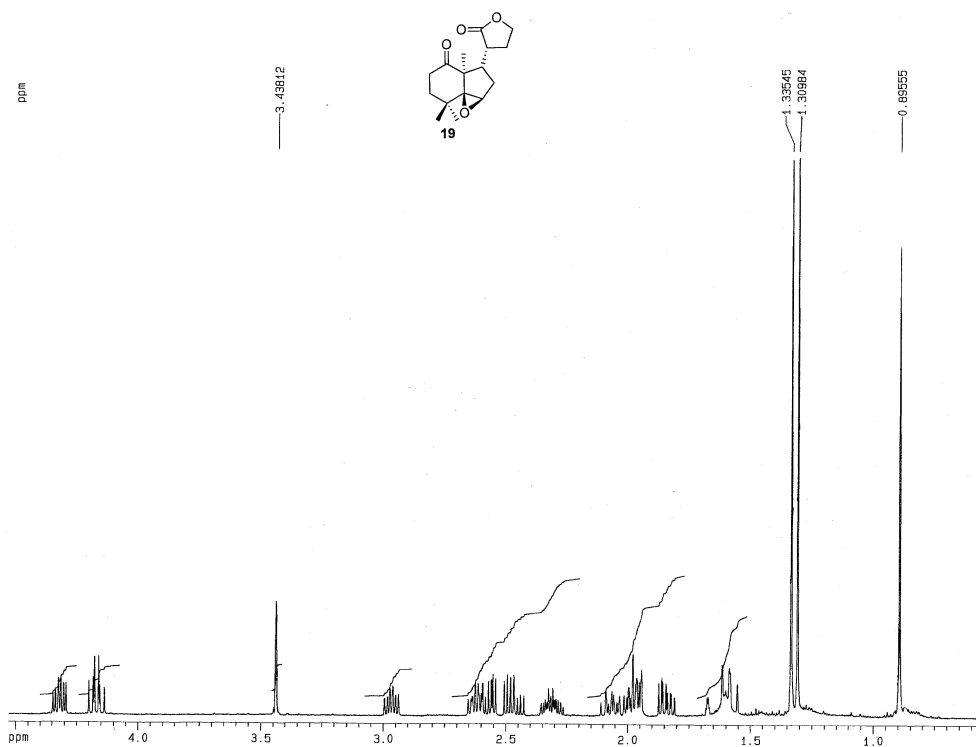


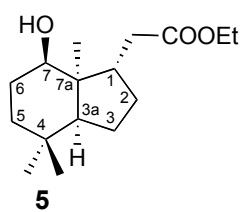




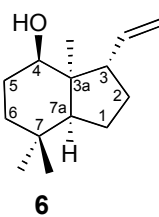




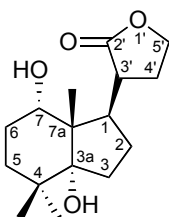




	H	C
1	2.53	37.4
2		31.2
3		24.7
3a	1.30	57.9
4		32.7
5	1.45	38.3
6	1.57/1.73	27.6
7	3.58	78.2
7a		48.1
CH ₃ (C 7a)	0.99	23.5
CH ₃ (C 4)eq	0.83	32.7
CH ₃ (C 4)ax	0.89	24.3
CH ₂ (C 1)	2.88/2.07	38.0

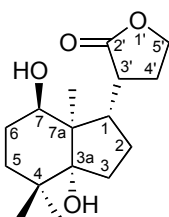


	H	C
1	1.50	25.2
2	1.85	30.5
3	2.85	46.6
3a		49.9
4	3.50	78.6
5	1.70	27.7
6	1.50	37.9
7		32.7
7a	1.35	58.1
CH ₃ (C 3a)	1.09	23.6
CH ₃ (C 7)eq	0.83	32.7
CH ₃ (C 7)ax	0.92	24.3
CH= (C 3)	5.95	143.4
=CH ₂ (C 3)	4.96/5.08	114.7



13a

	H	C
1	2.87	43.7
2	1.46/1.72	23.6
3	1.86	26.3
3a		85.2
4		37.1
5	1.78/1.30	32.3
6	1.50/2.10	35.8
7	3.70	75.8
7a		51.10
CH ₃ (C 7a)	1.07	18.4
CH ₃ (C 4)eq	0.95	27.7
CH ₃ (C 4)ax	1.03	24.2
2'		180.8
3'	2.89	41.8
4'	2.45	25.7
5'	4.14/4.30	66.6



13b

	H	C
1	3.05	40.2
2		24.5
3	1.77/1.95	25.6
3a		87.3
4		37.9
5	1.95	30.1
6	1.69	27.6
7	4.02	72.9
7a		49.8
CH ₃ (C 7a)	0.89	17.5
CH ₃ (C 4)eq	1.02	28.8
CH ₃ (C 4)ax	1.06	25.1
2'		181.7
3'	2.66	39.3
4'	2.30	29.6
5'	4.48/4.85	67.5