

Double Diastereoselection in *Anti* Aldol Reactions Mediated by Dicyclohexylchloroborane between An L-Erythrulose Derivative and Chiral Aldehydes

Santiago Díaz-Oltra,^a Purificación Ruiz,^a Eva Falomir,^a Juan Murga,^a Miguel Carda,^a and J. Alberto Marco^b

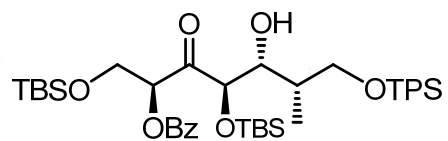
^a*Departamento de Química Inorgánica y Orgánica, Universidad Jaume I, E-12071 Castellón, Spain; and* ^b*Departamento de Química Orgánica, Universidad de Valencia, E-46100 Burjassot, Valencia, Spain*

Supporting Information

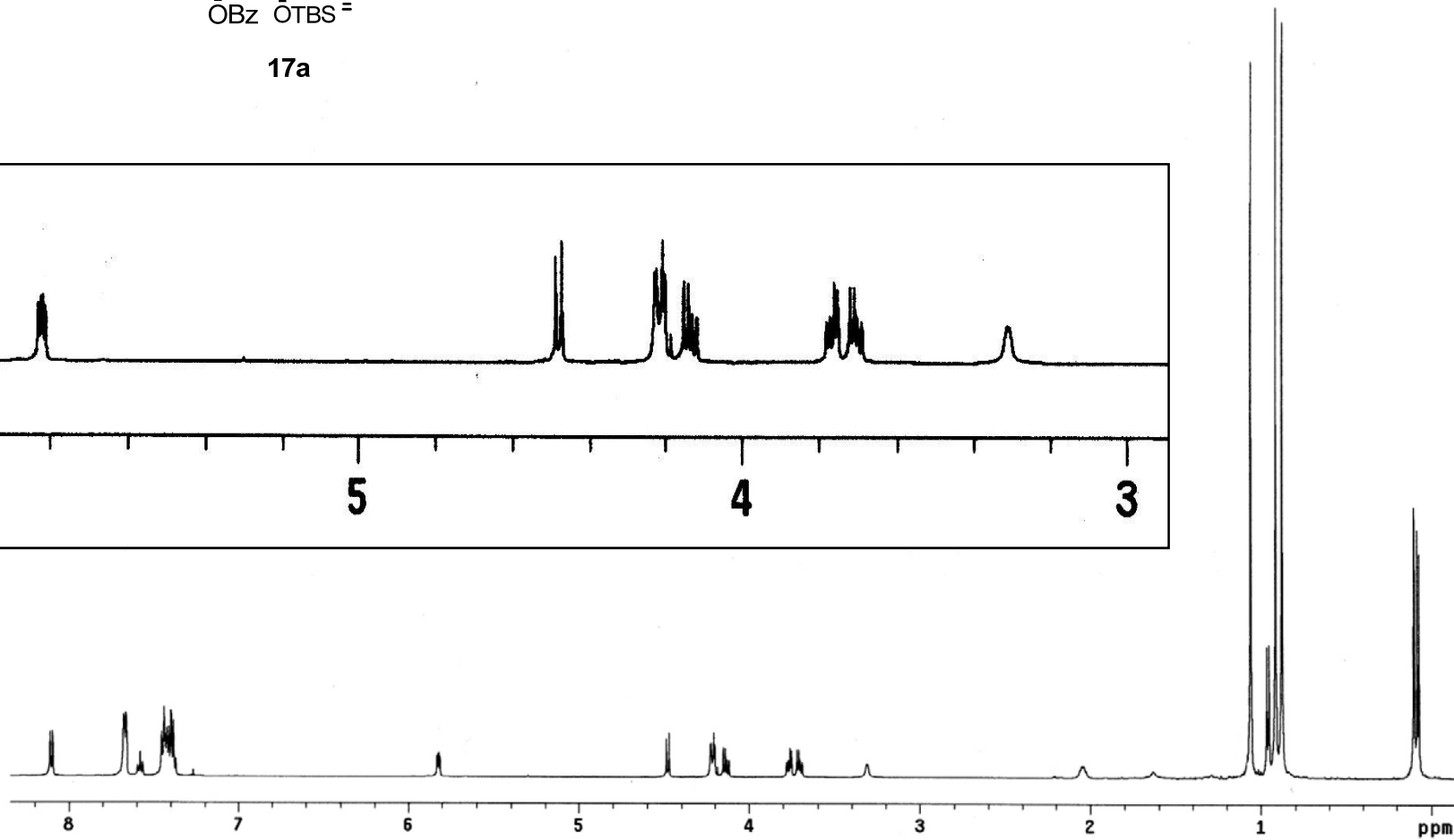
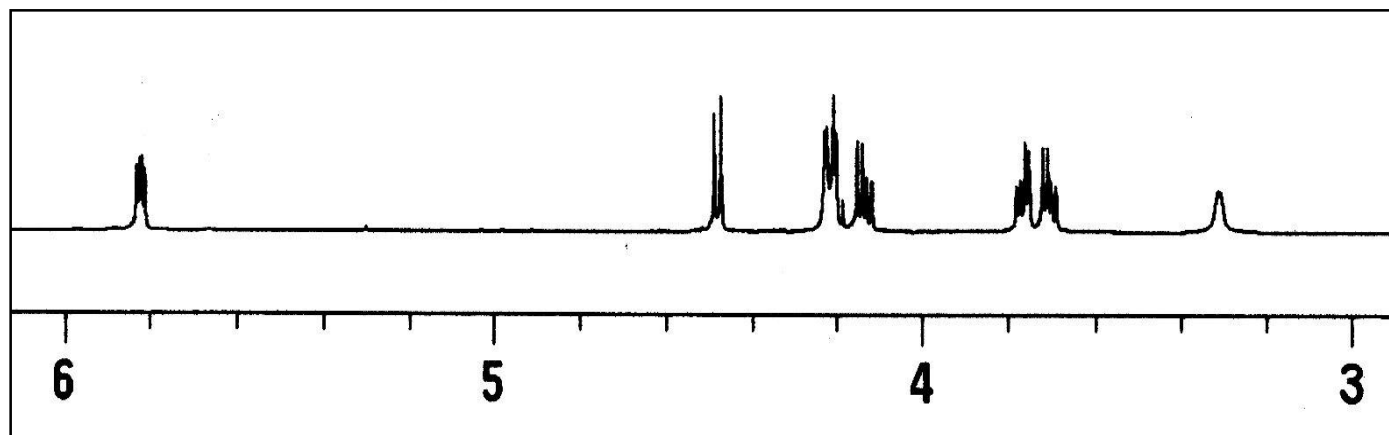
Contents:

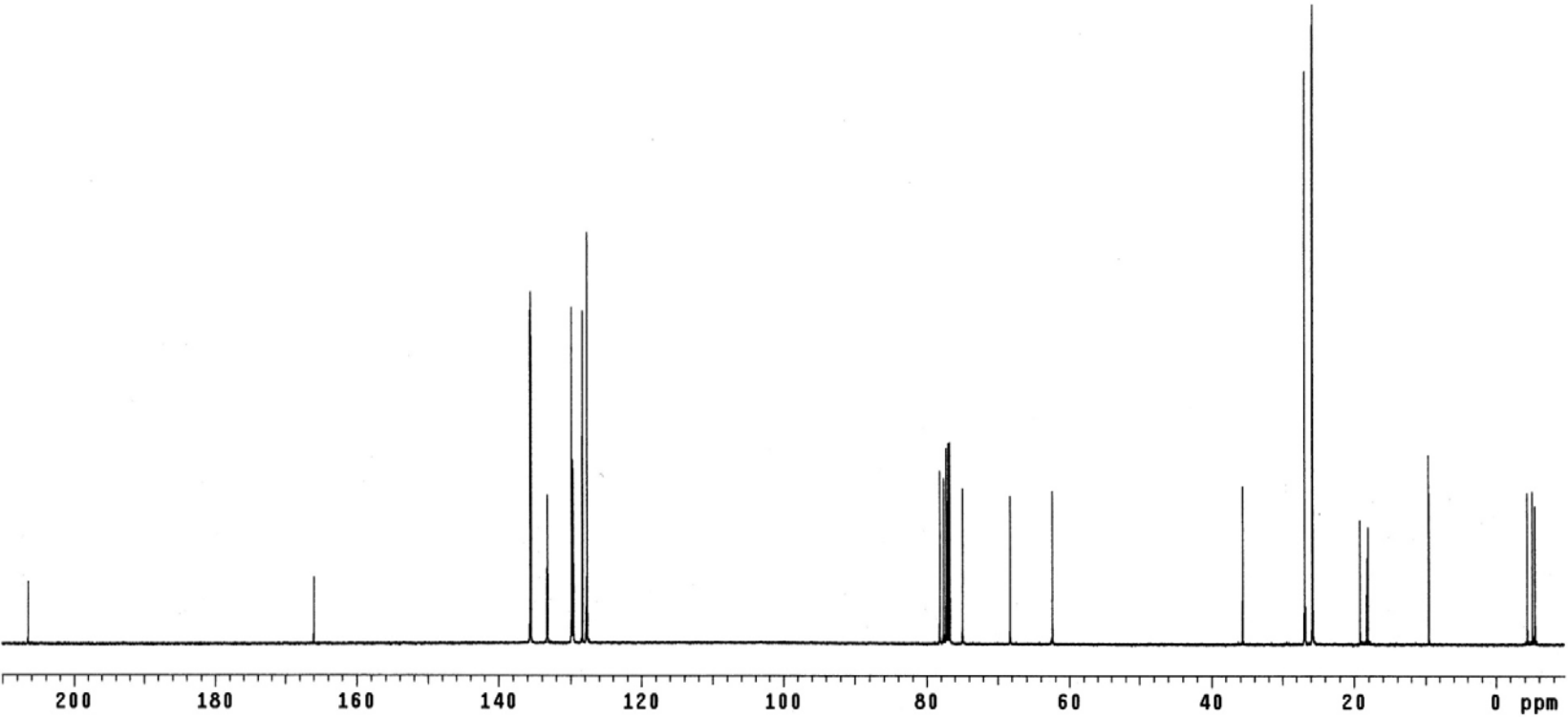
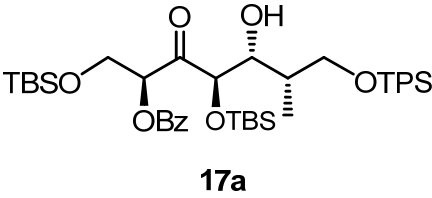
S-2/S-31: ¹H and ¹³C NMR spectra of aldols 17-20 and intermediates 21-25

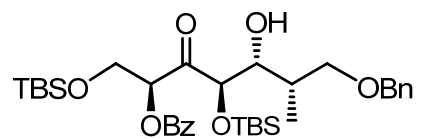
NMR Spectra of new compounds



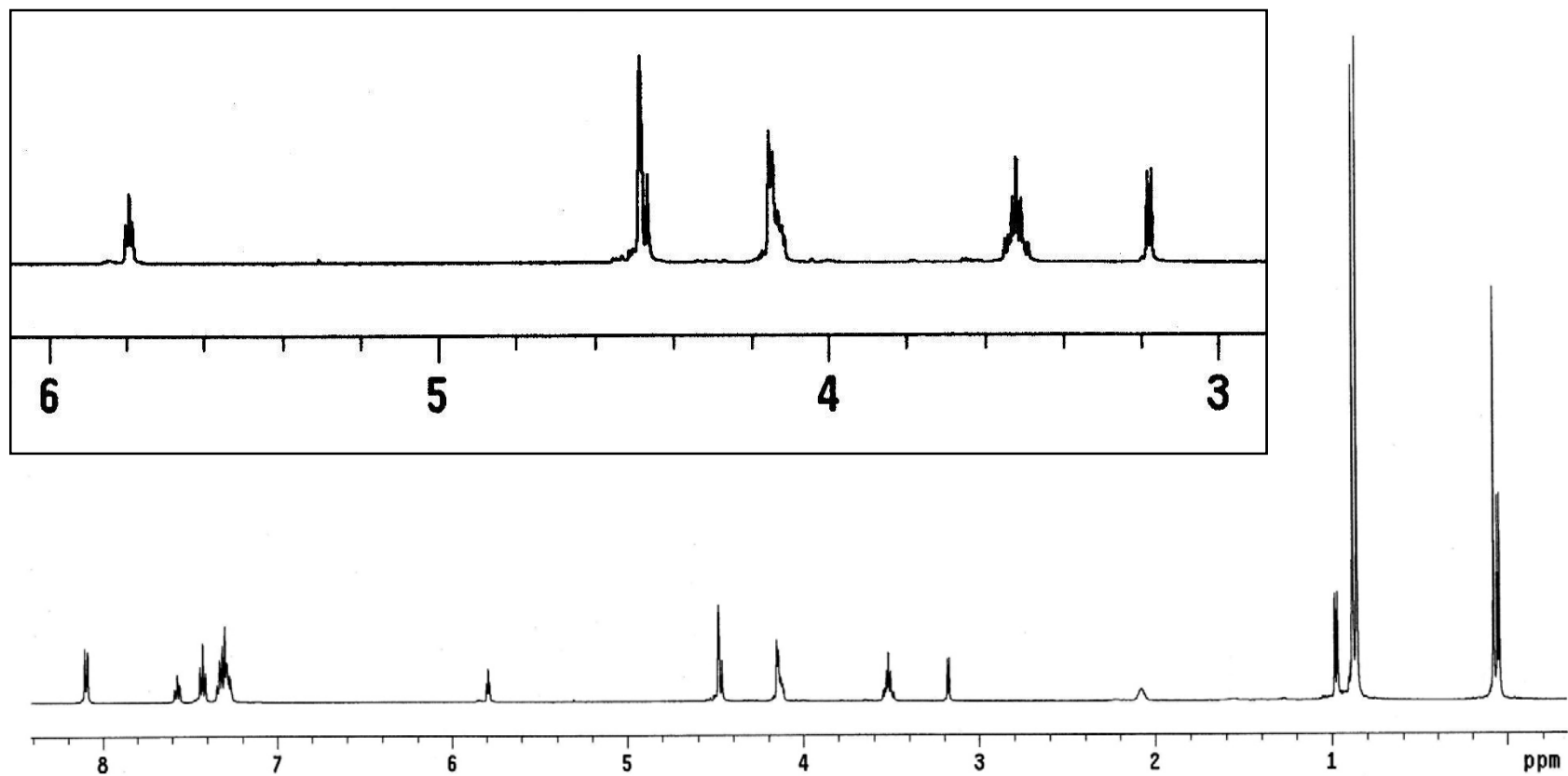
17a

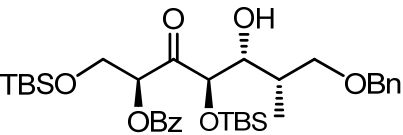




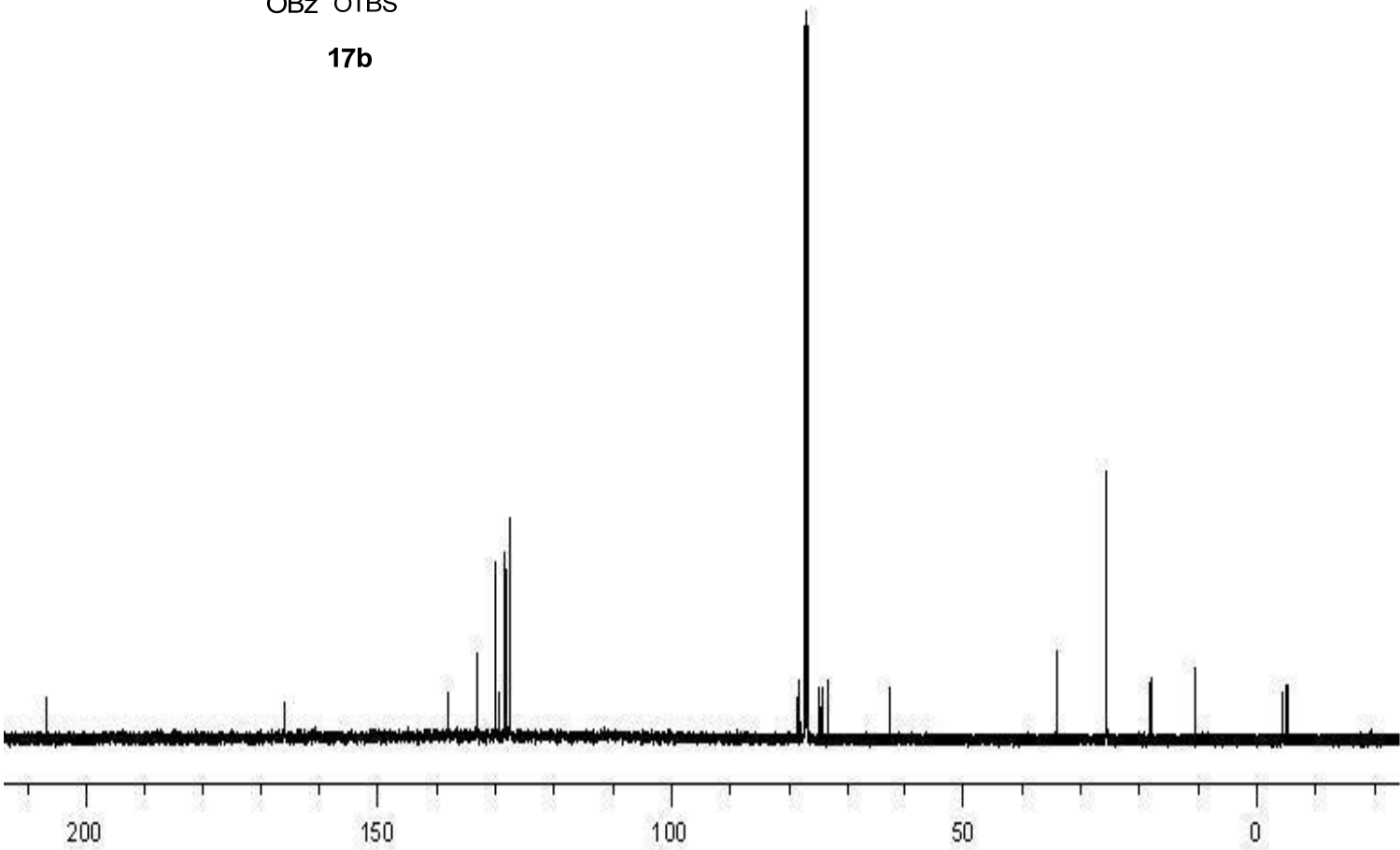


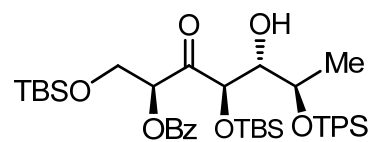
17b



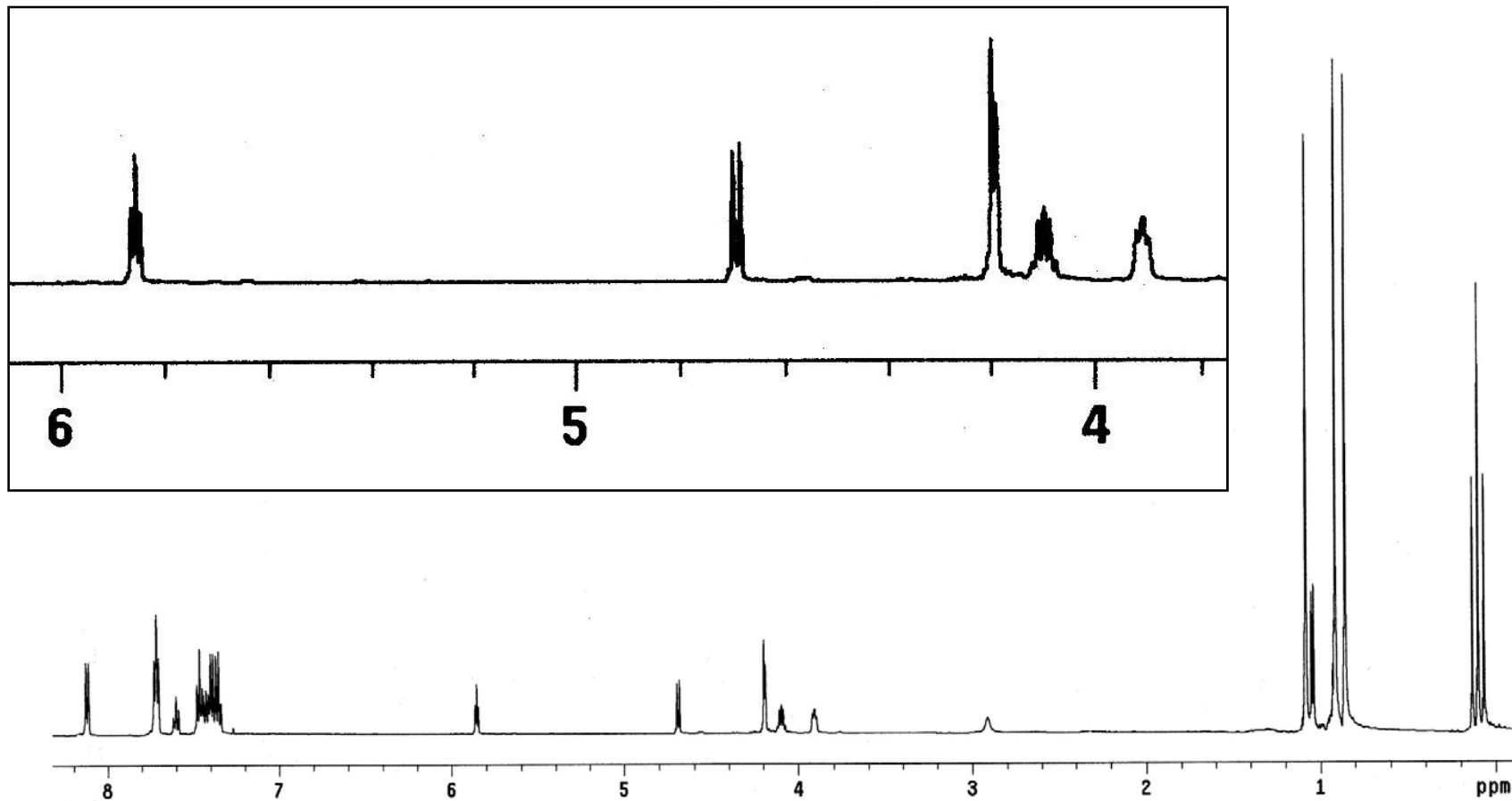


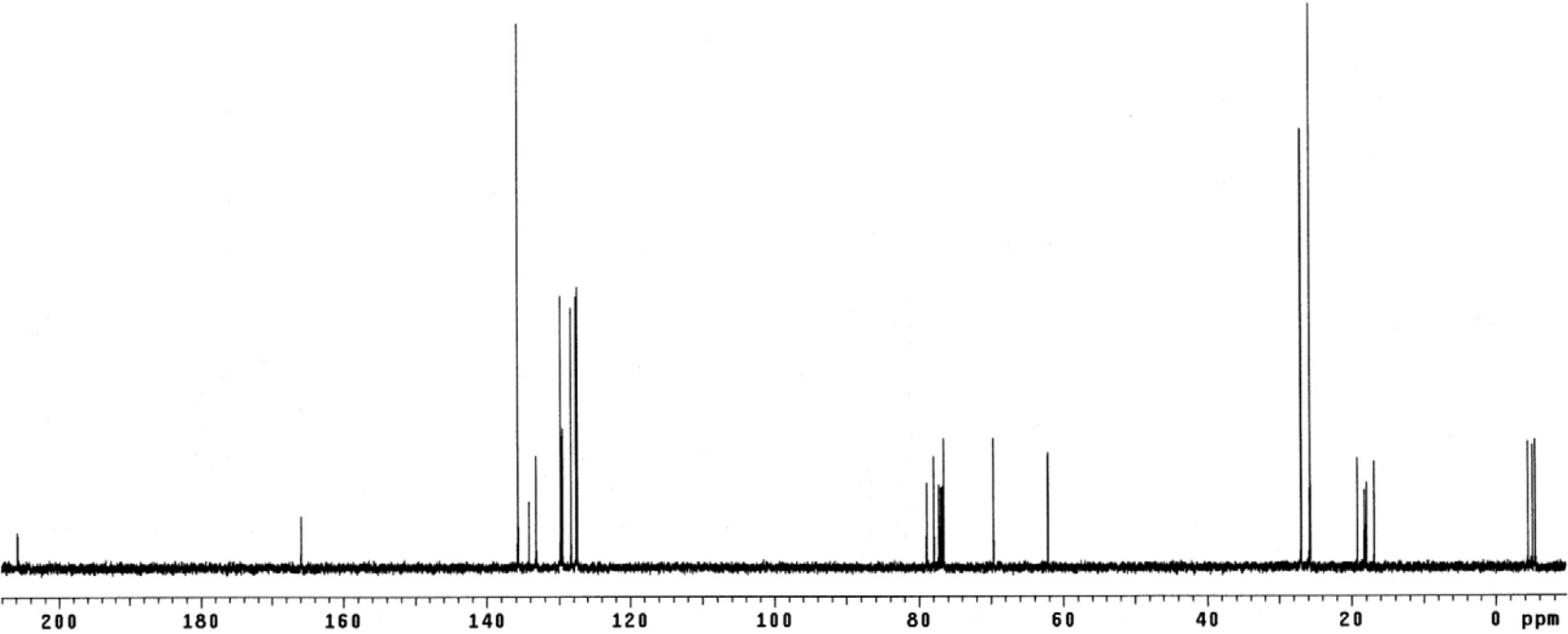
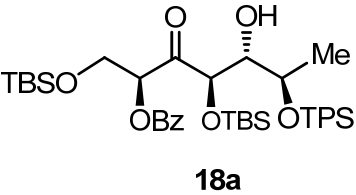
17b

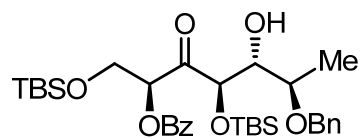




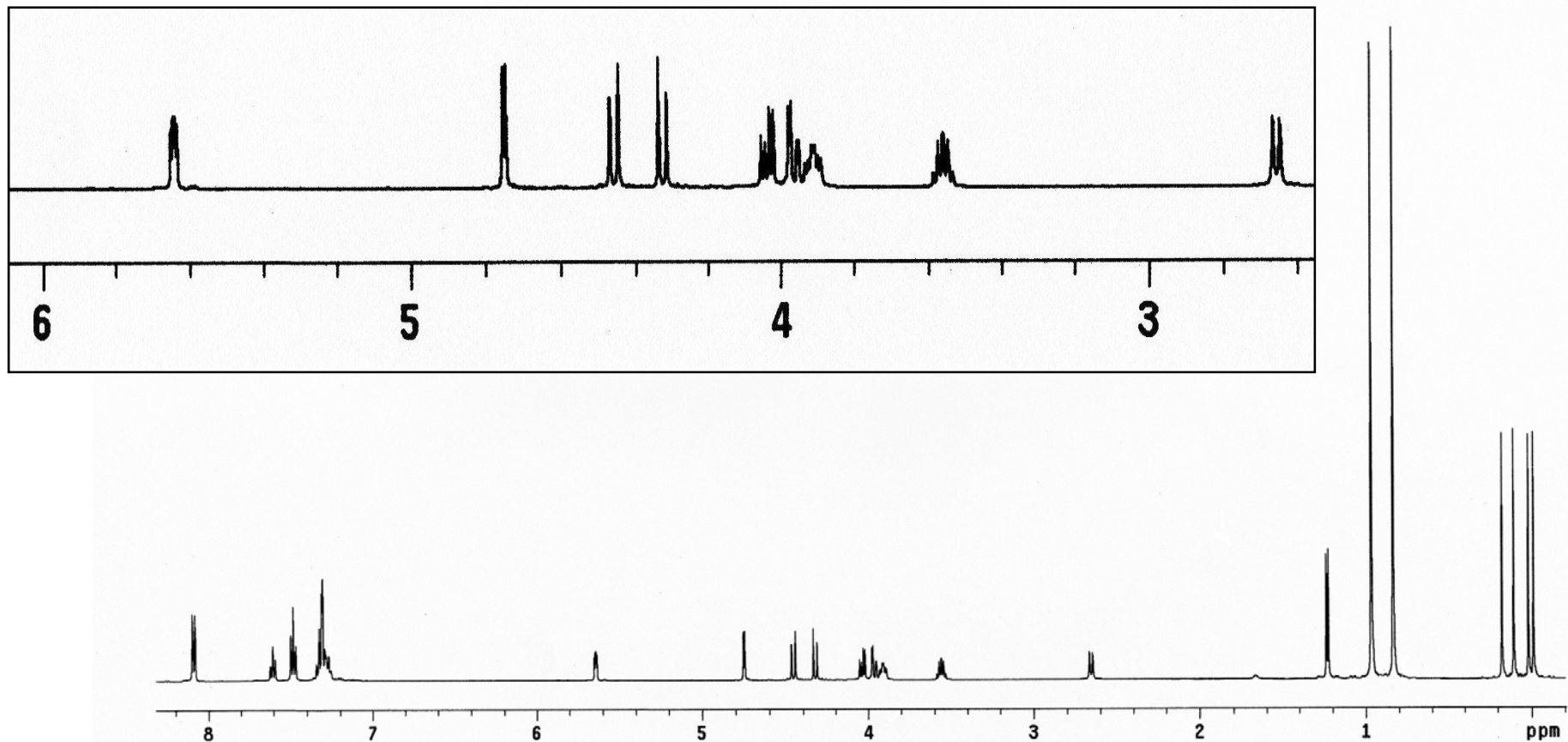
18a

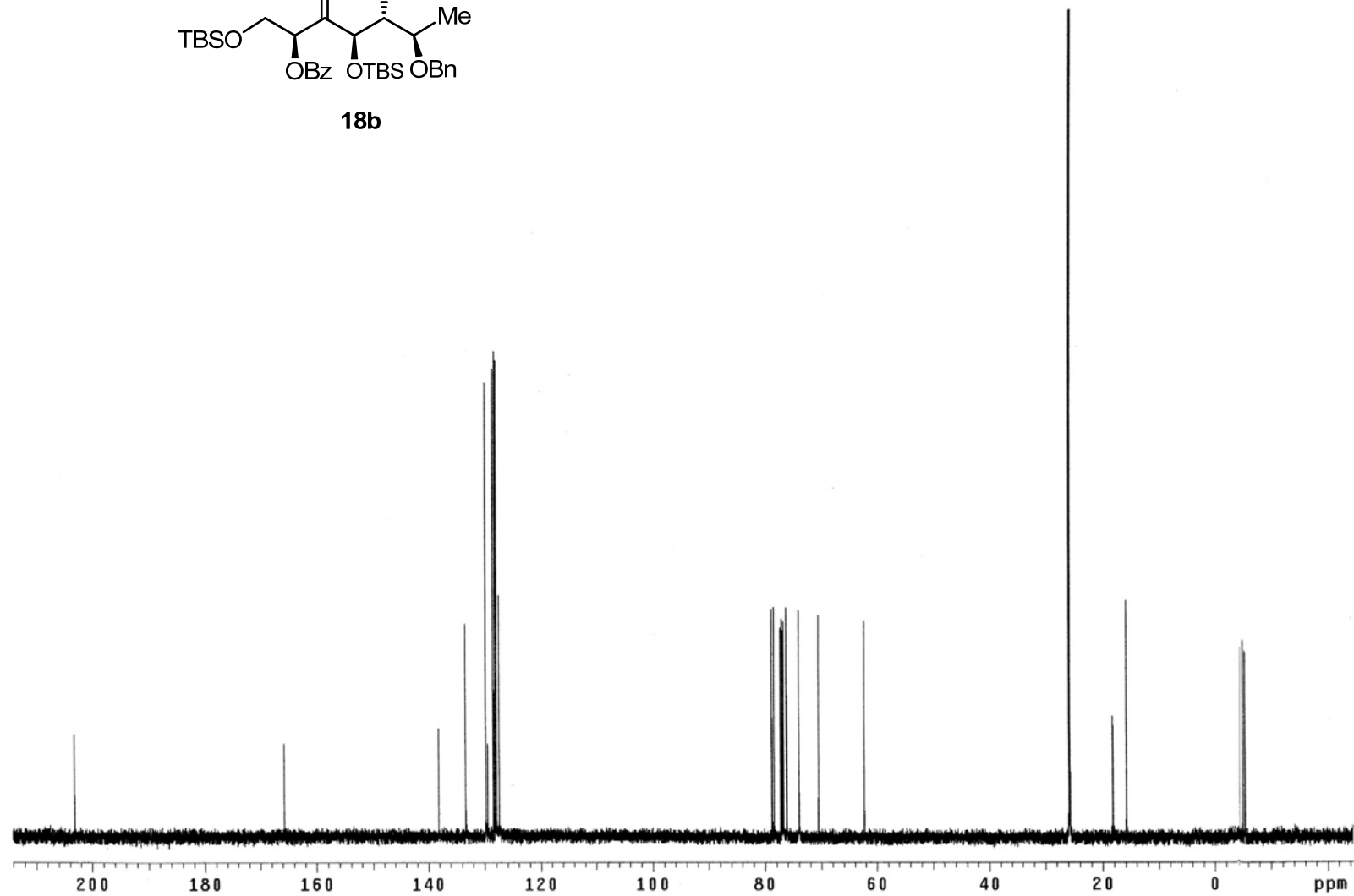
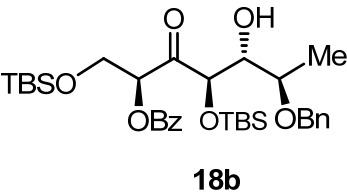


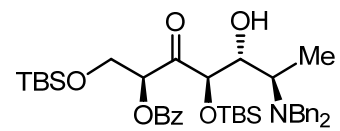




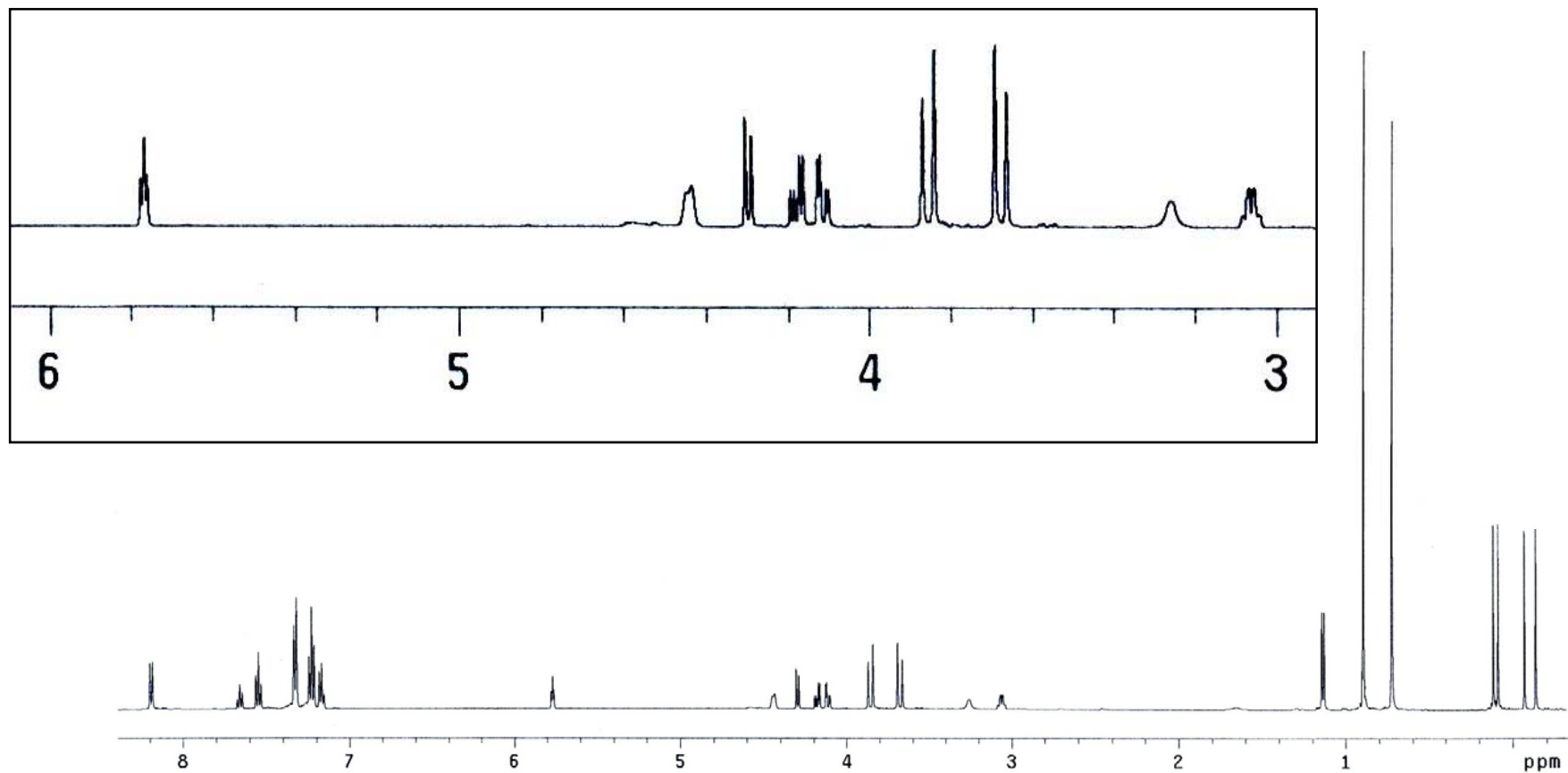
18b

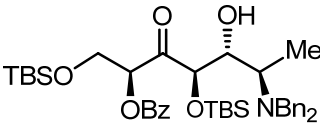




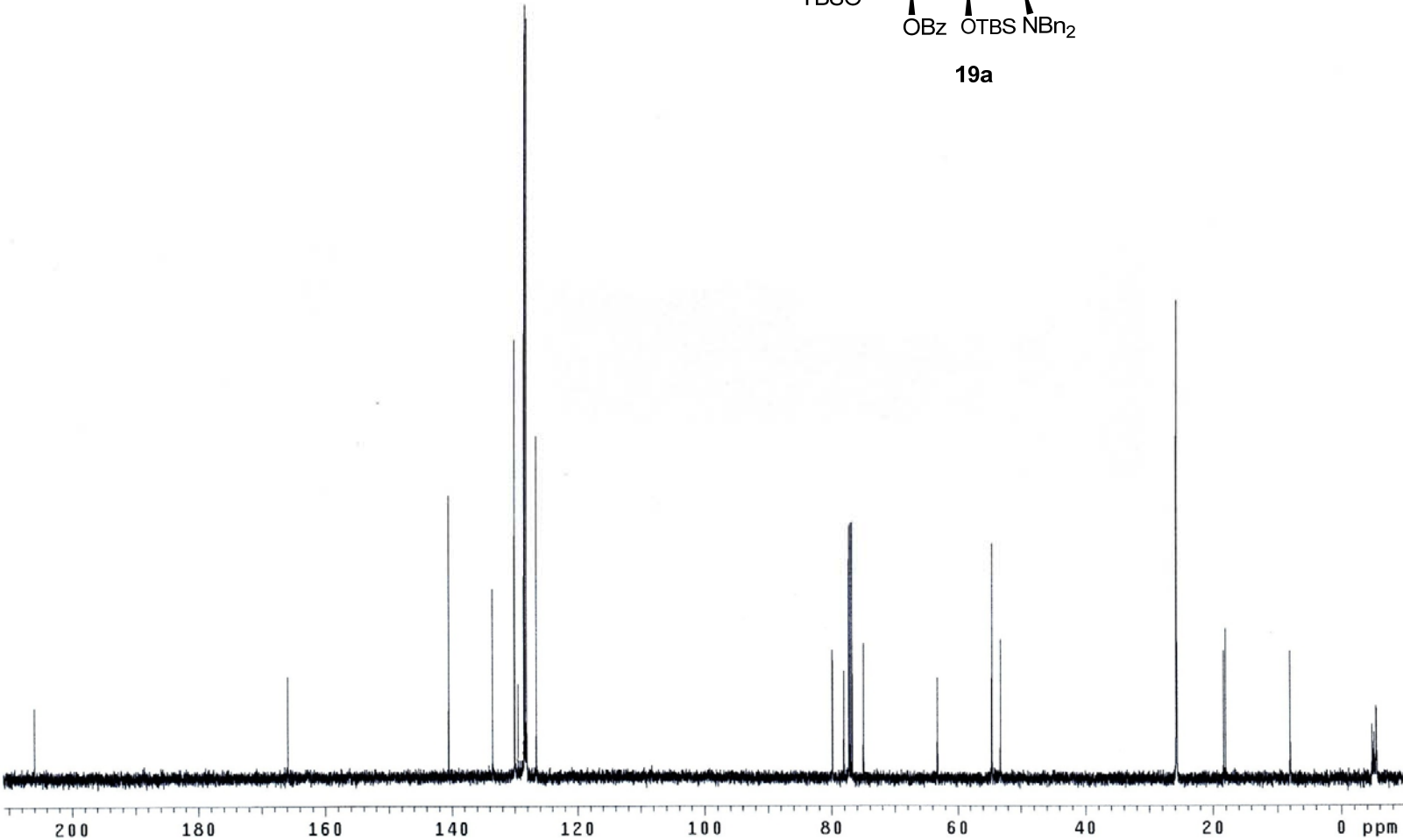


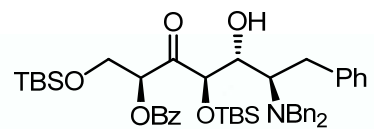
19a



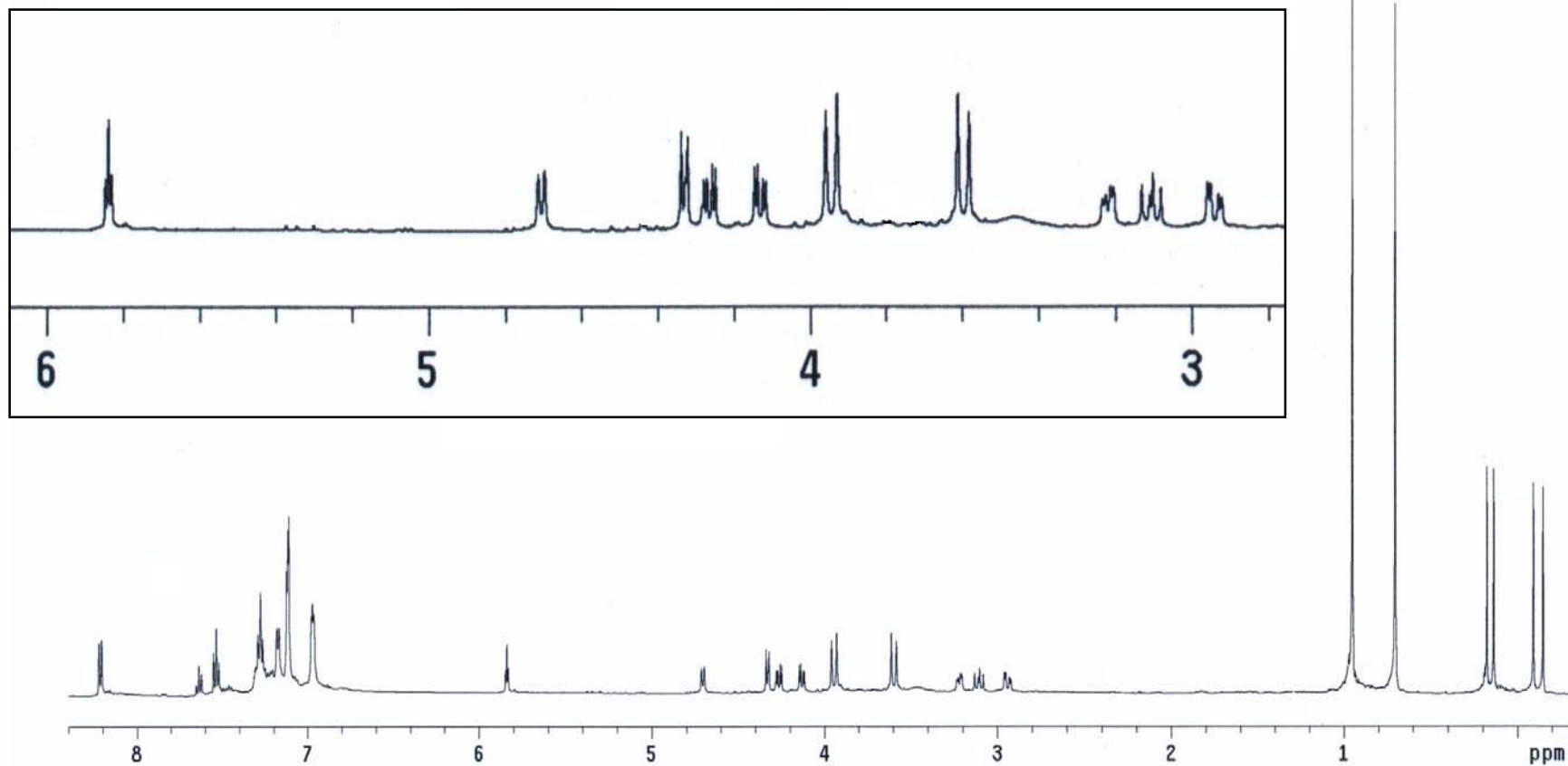


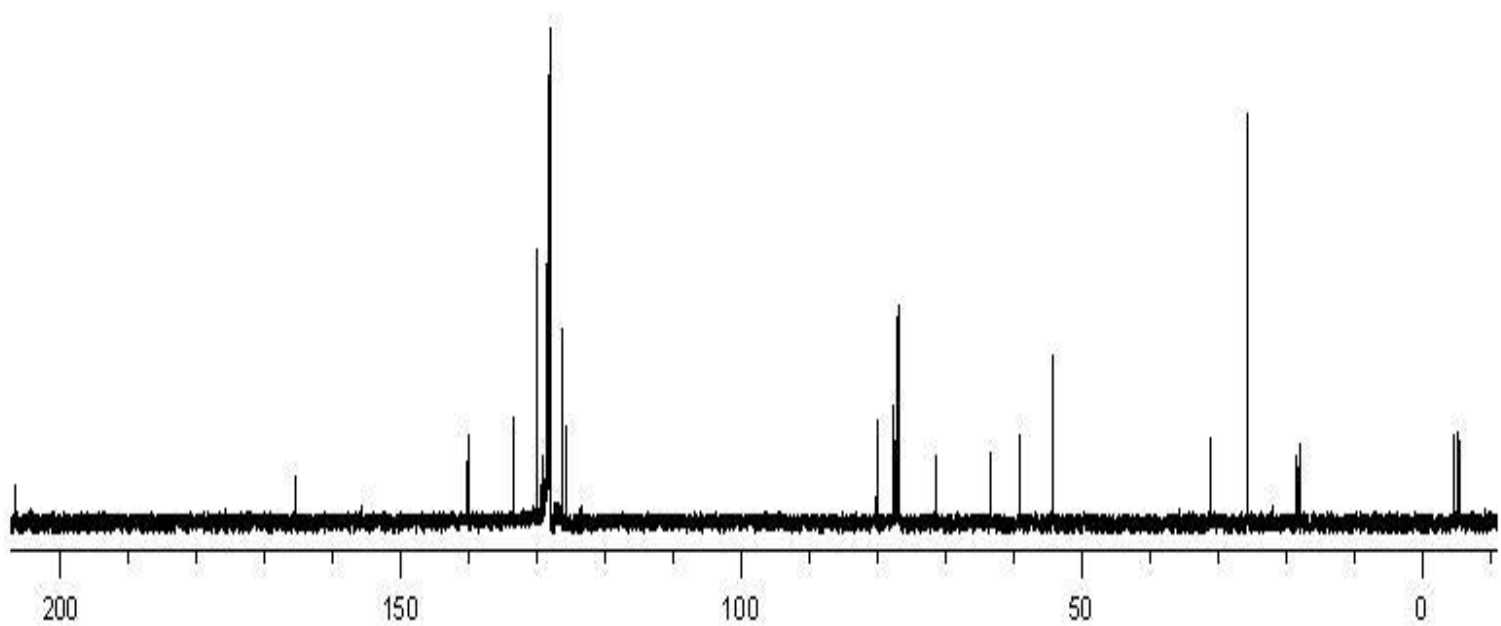
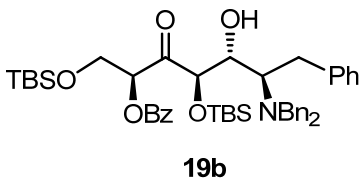
19a

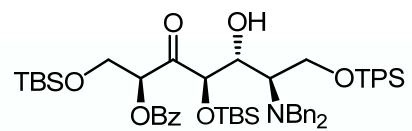




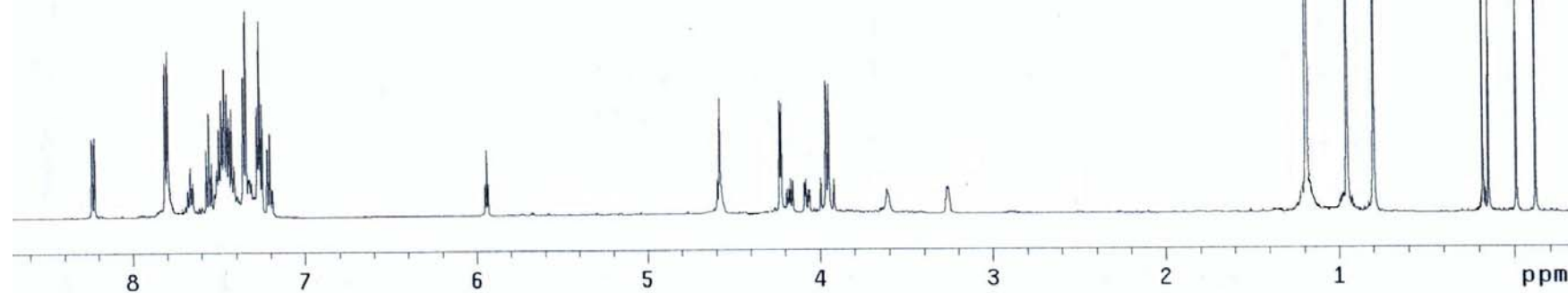
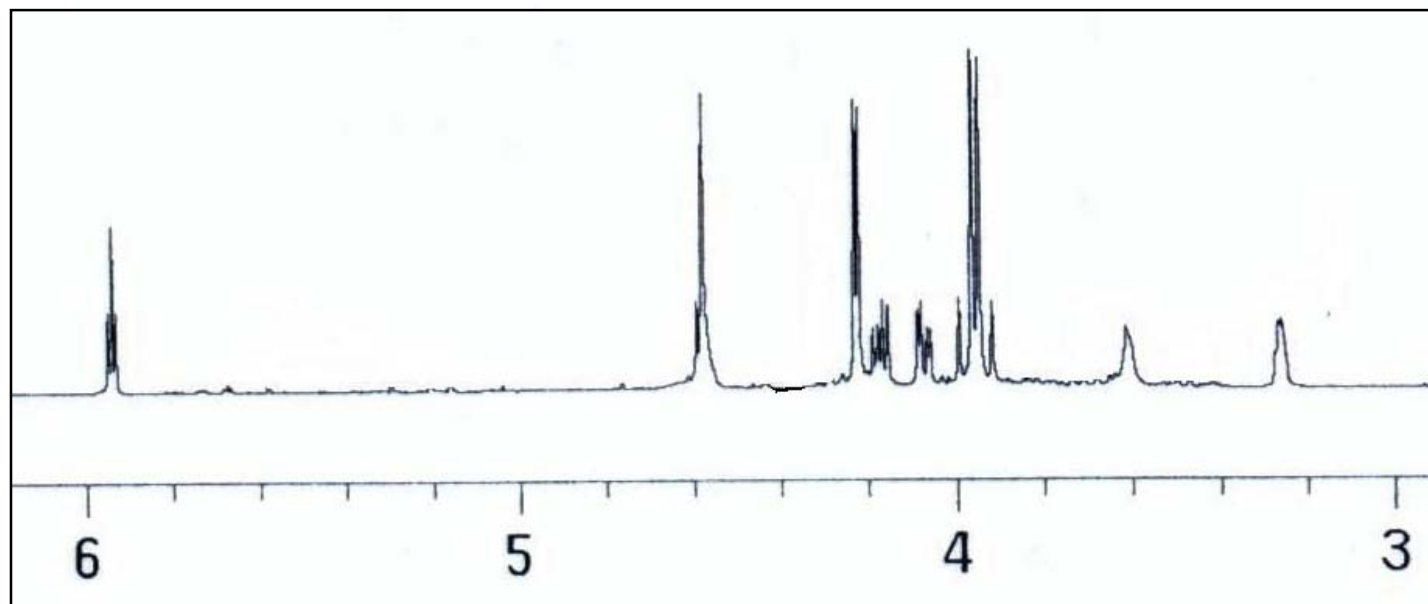
19b

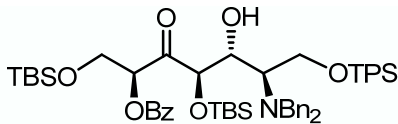




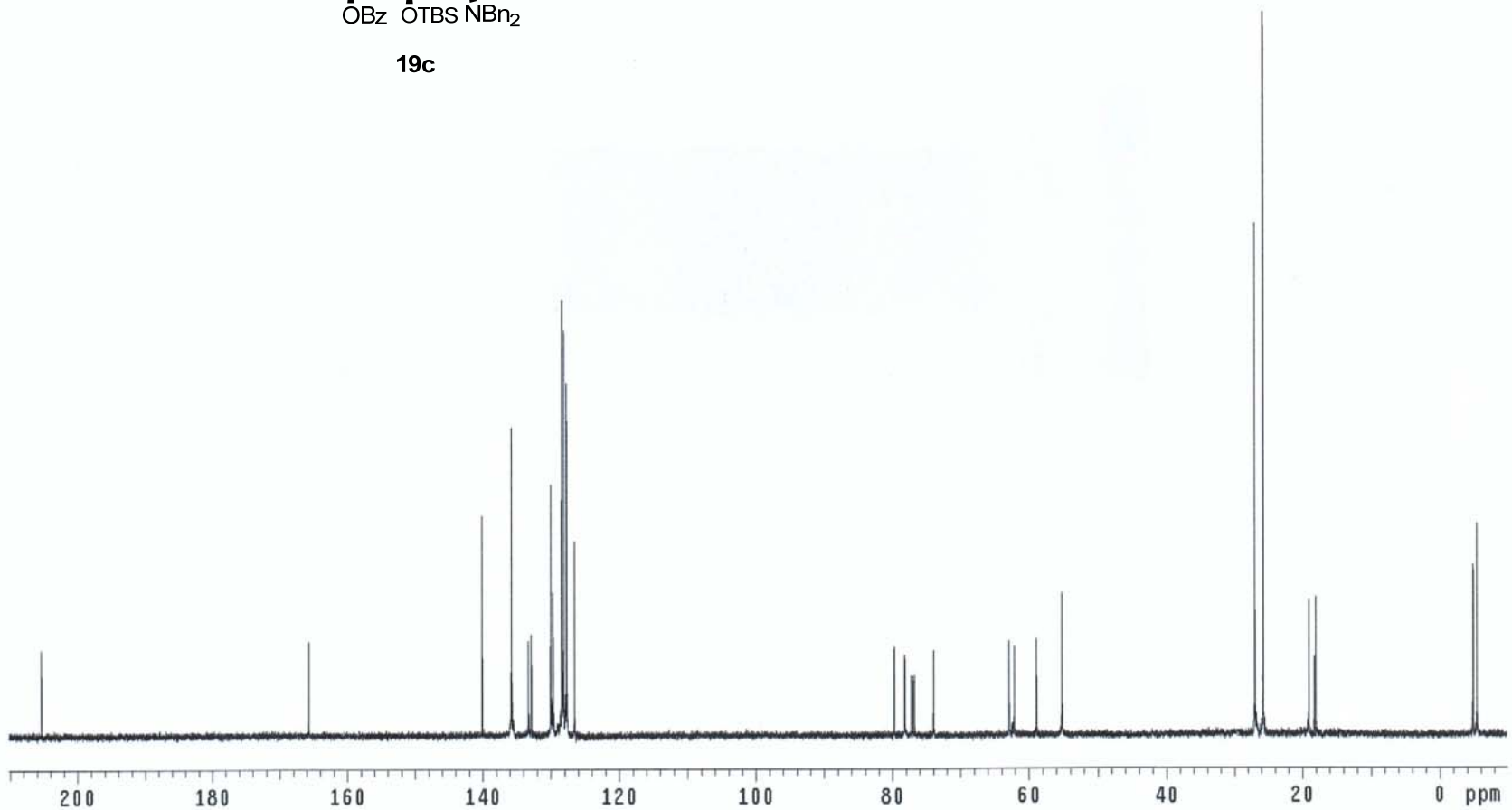


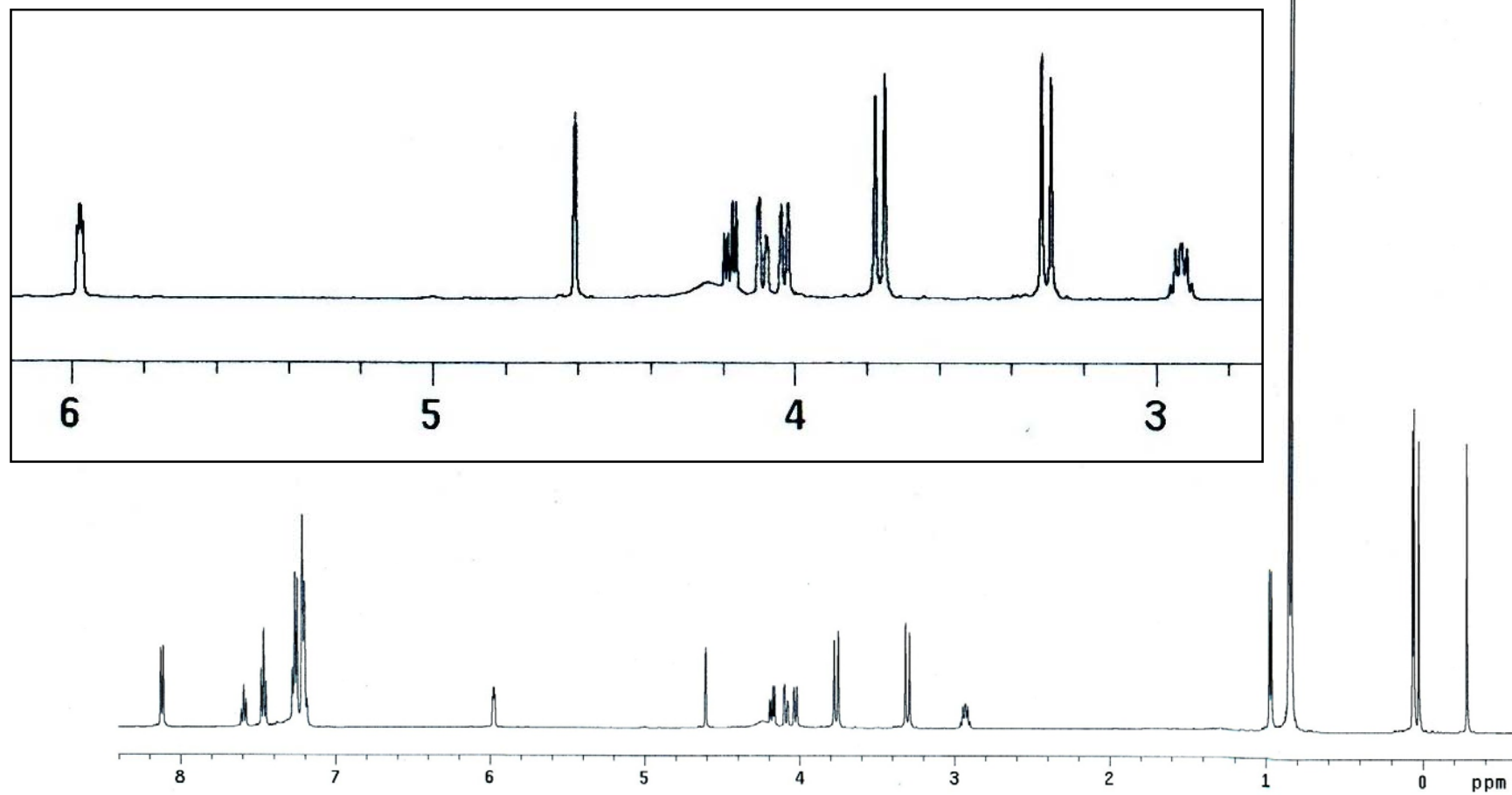
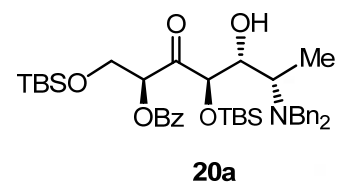
19c

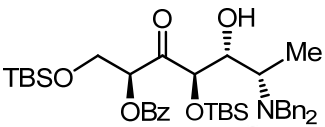




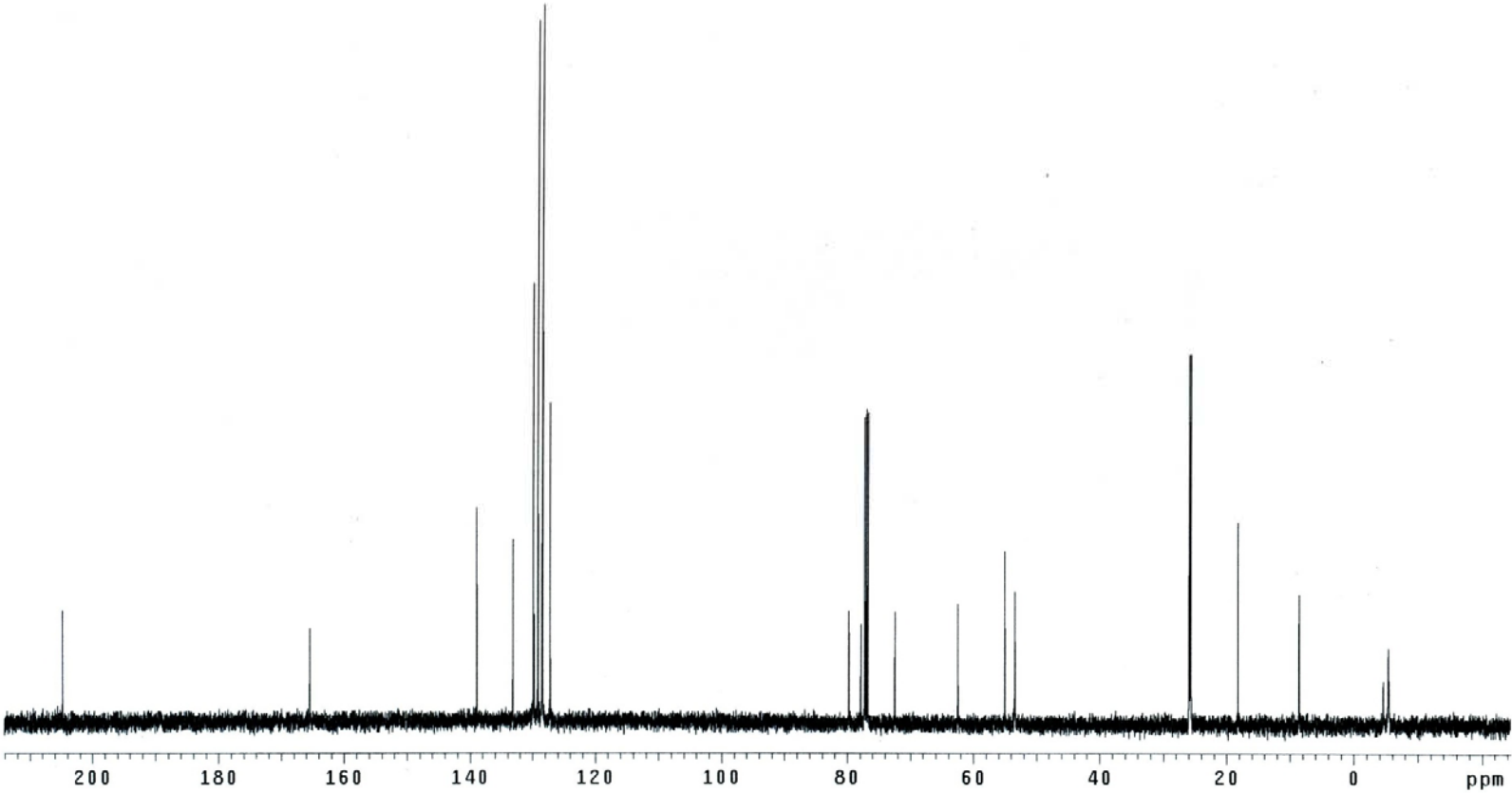
19c

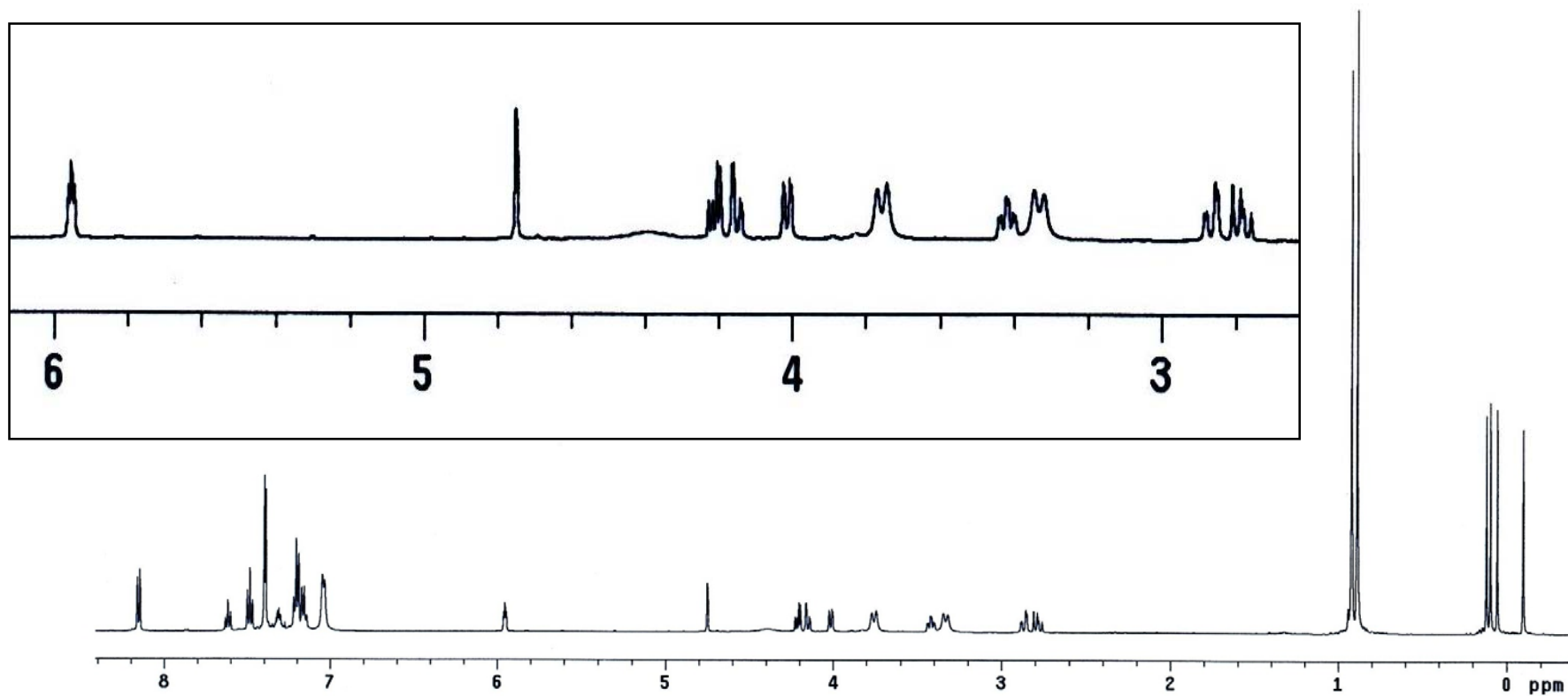
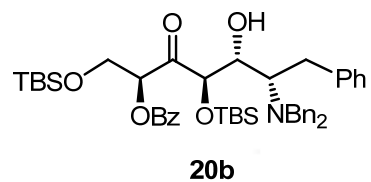


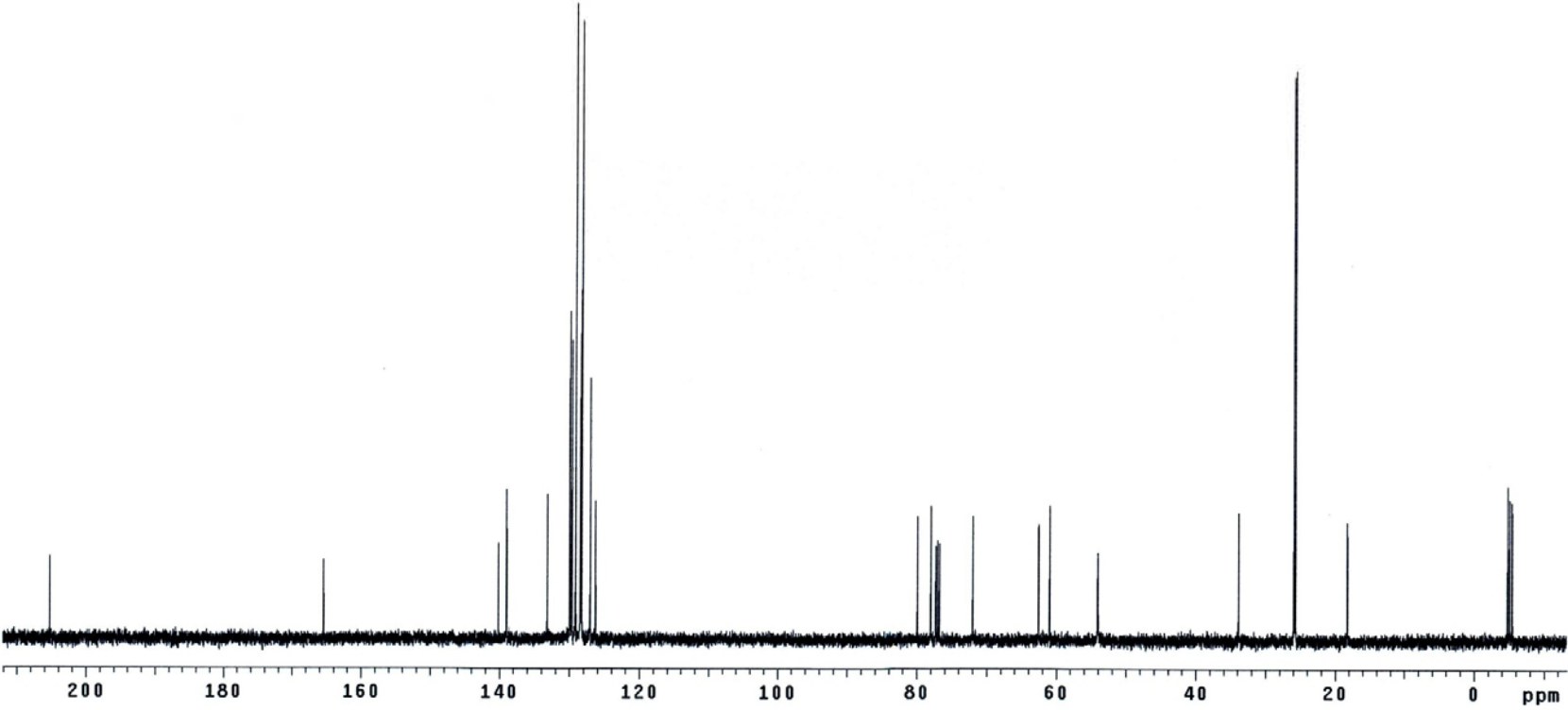
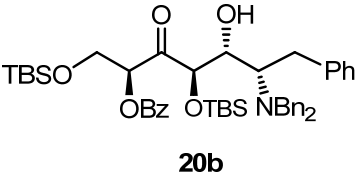


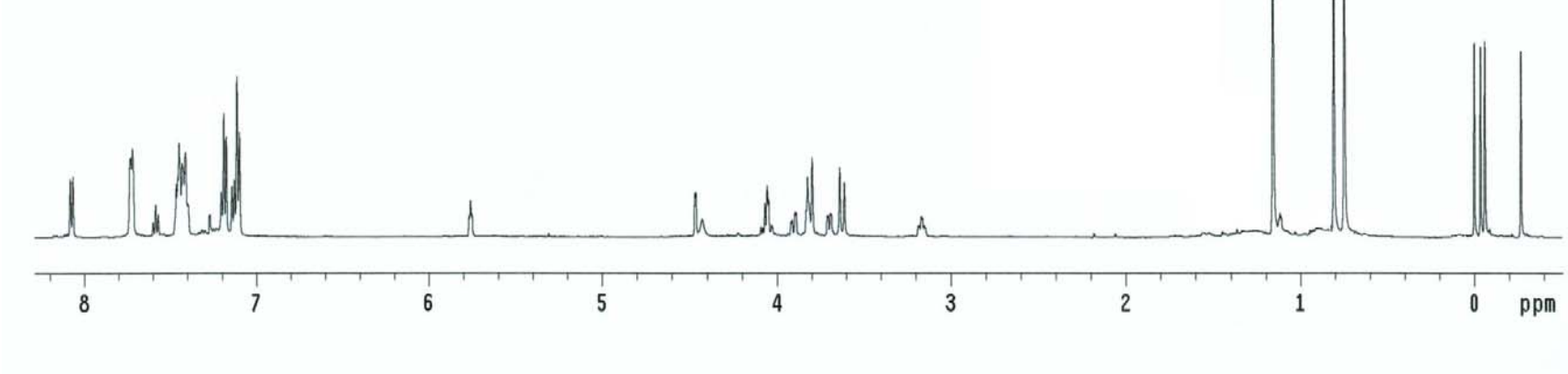
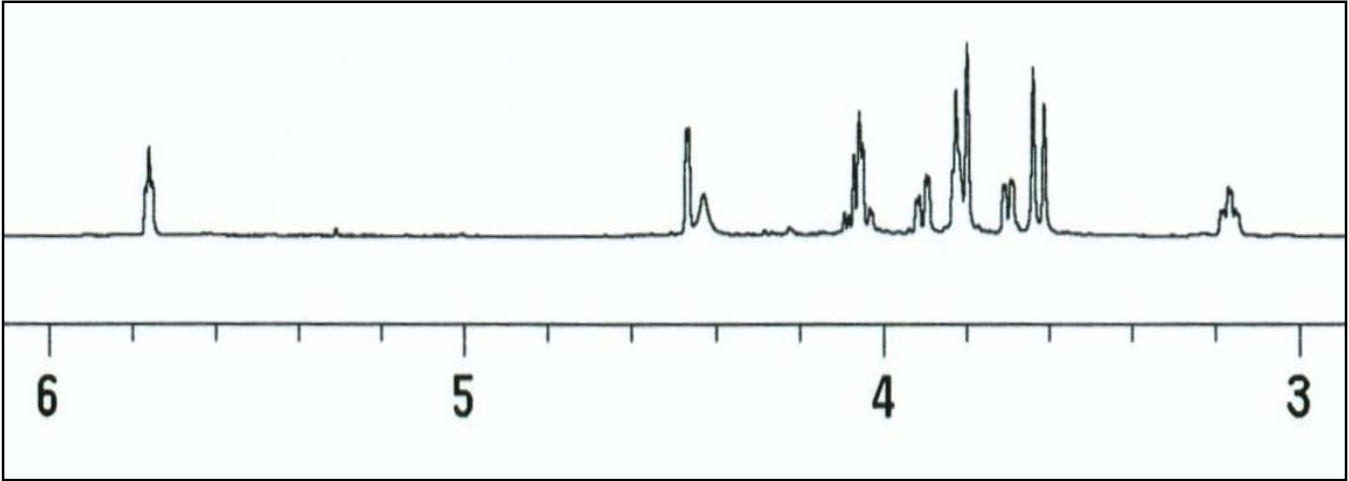
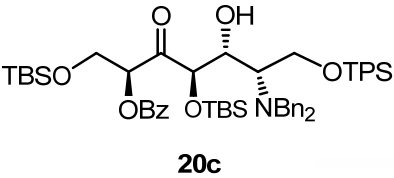


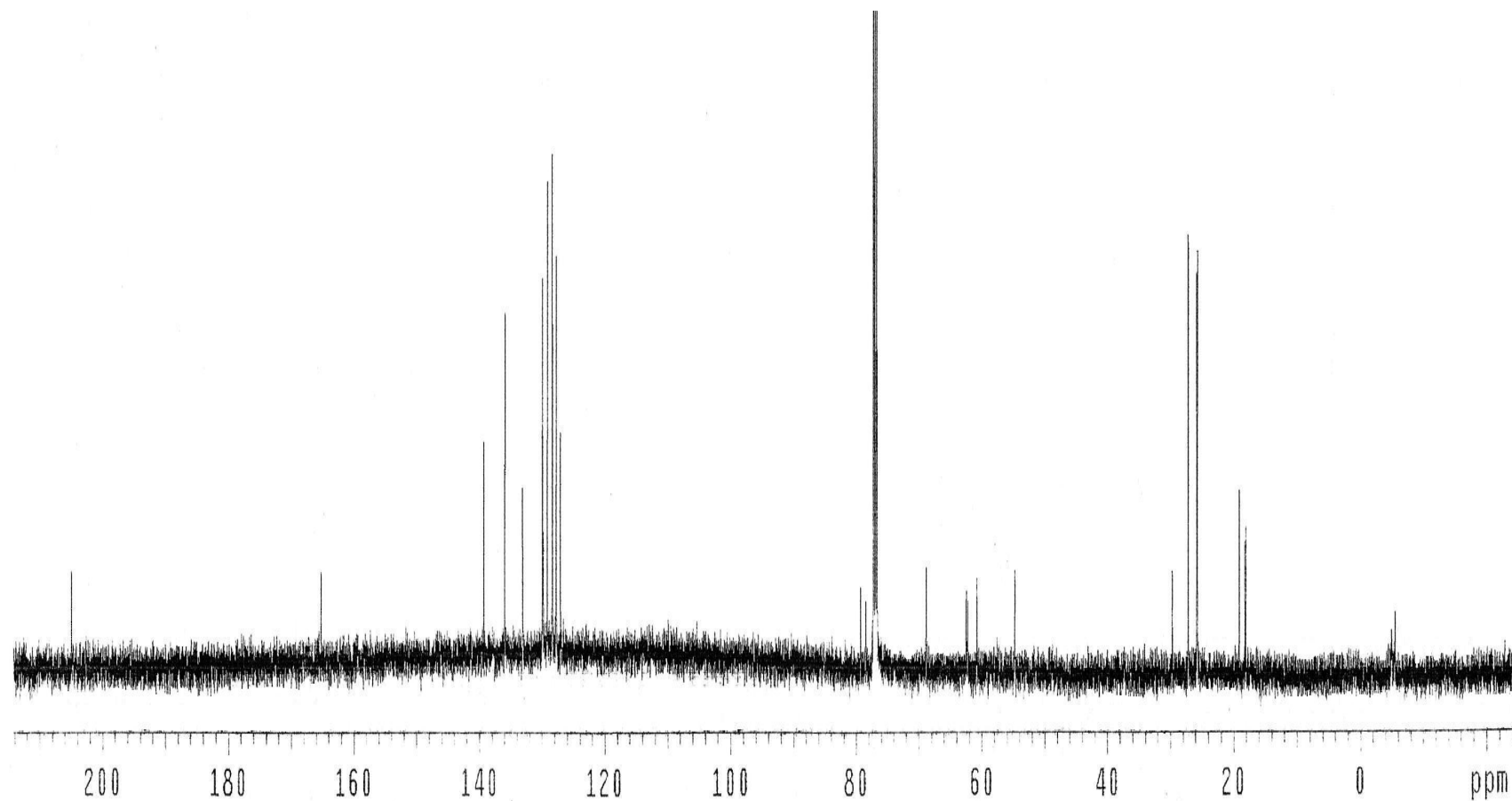
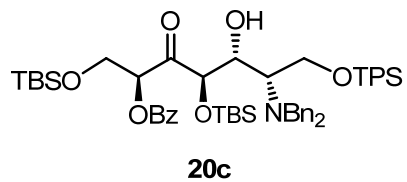
20a

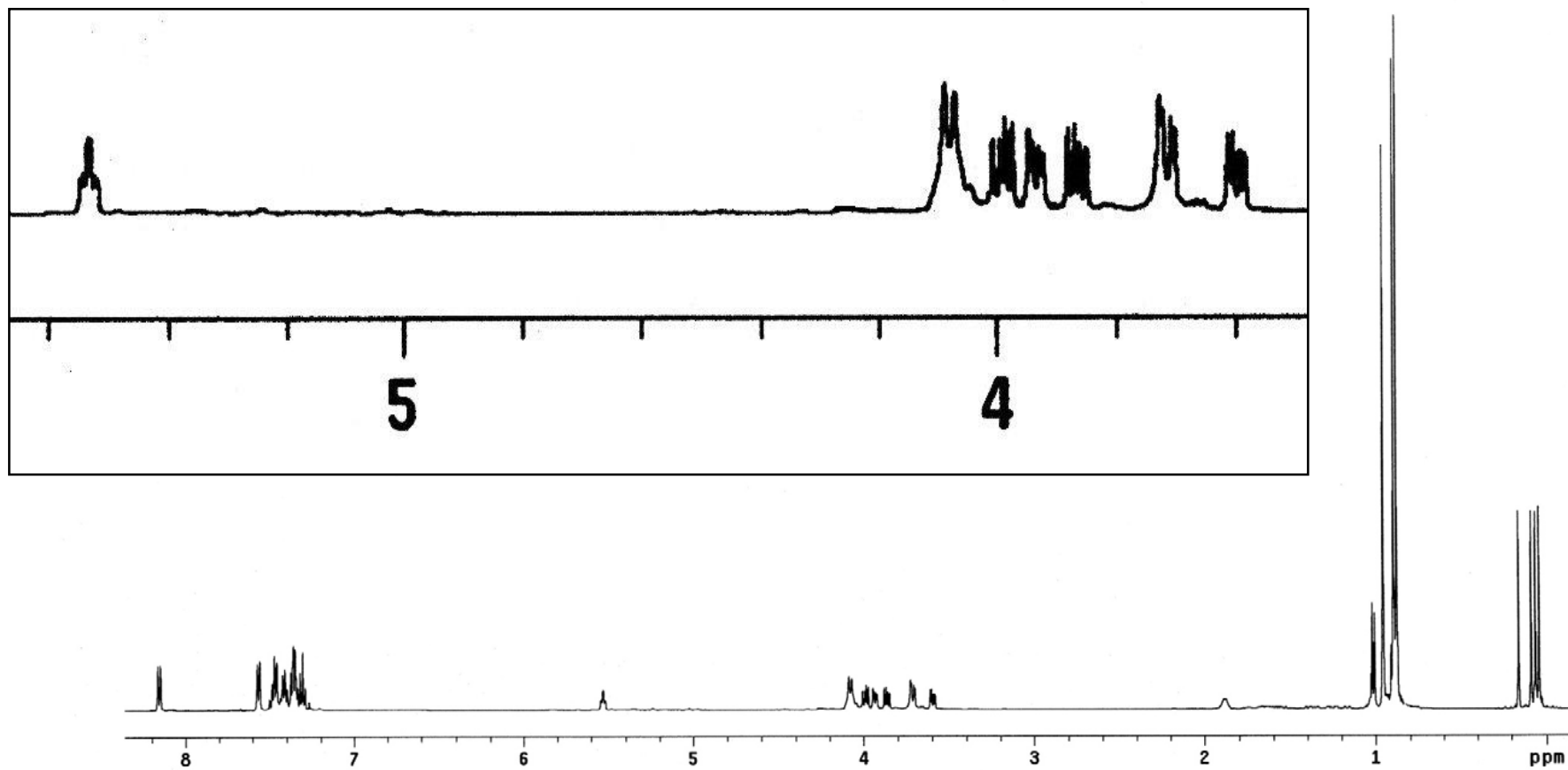
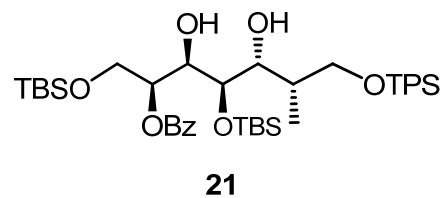


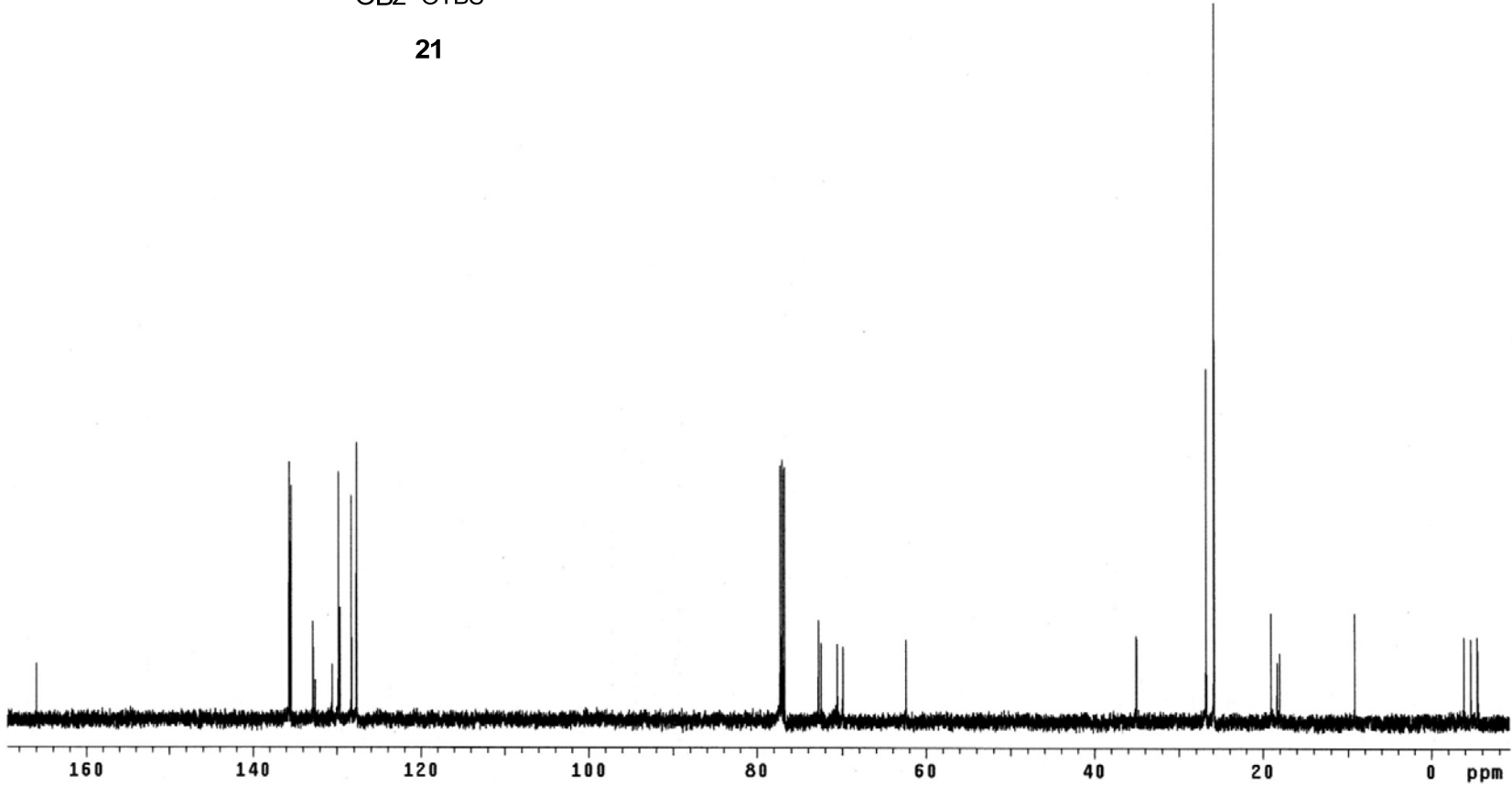
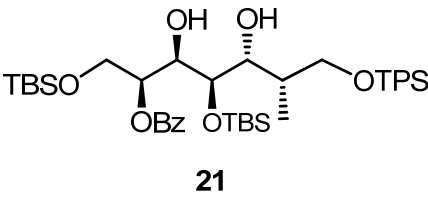


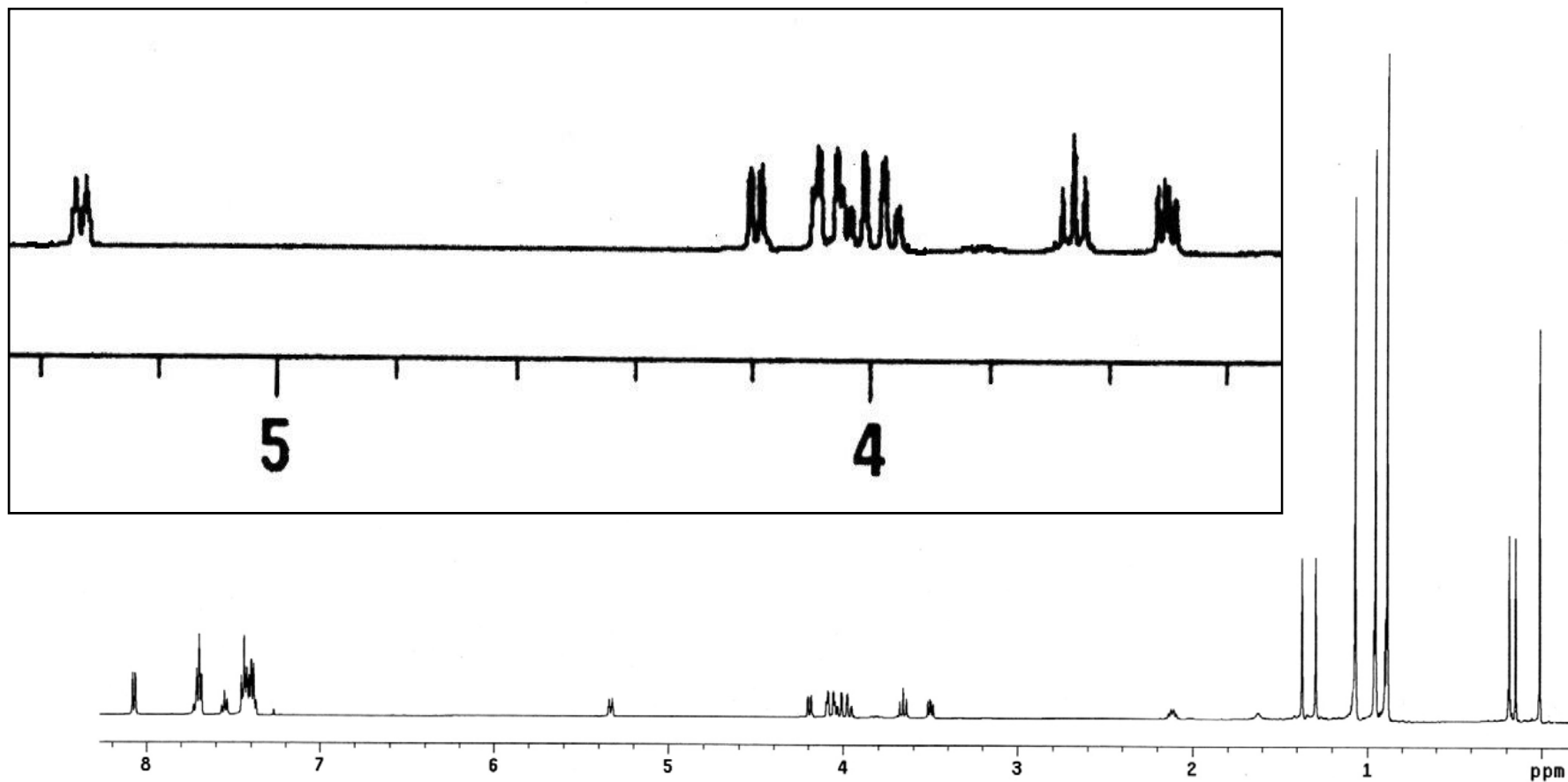
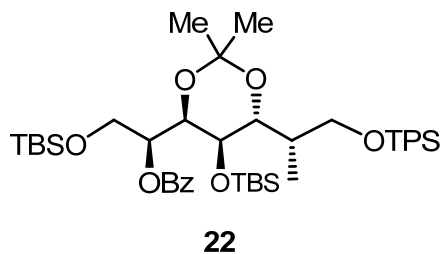


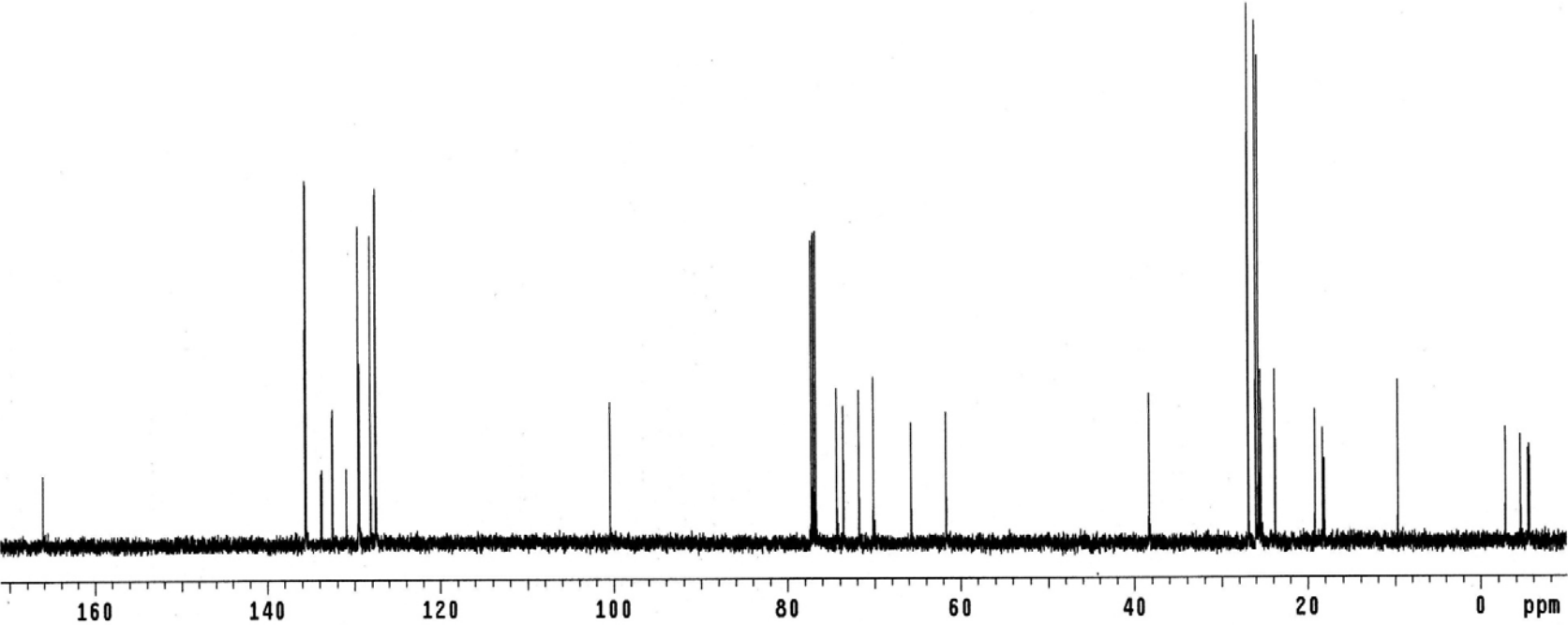
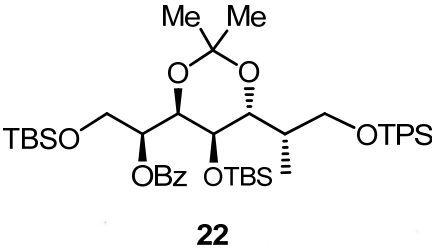


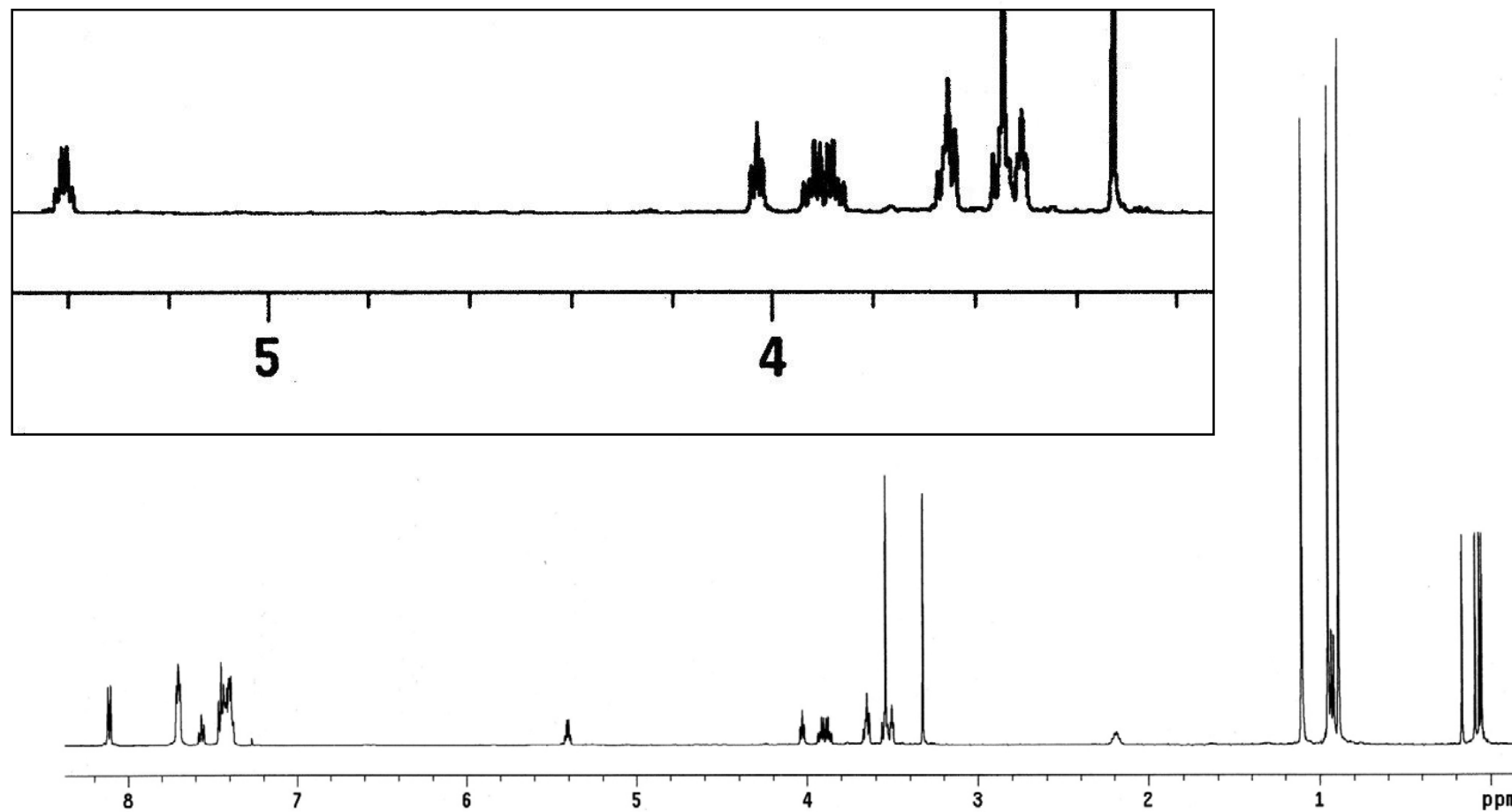
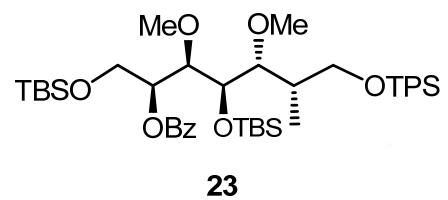


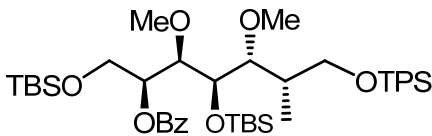




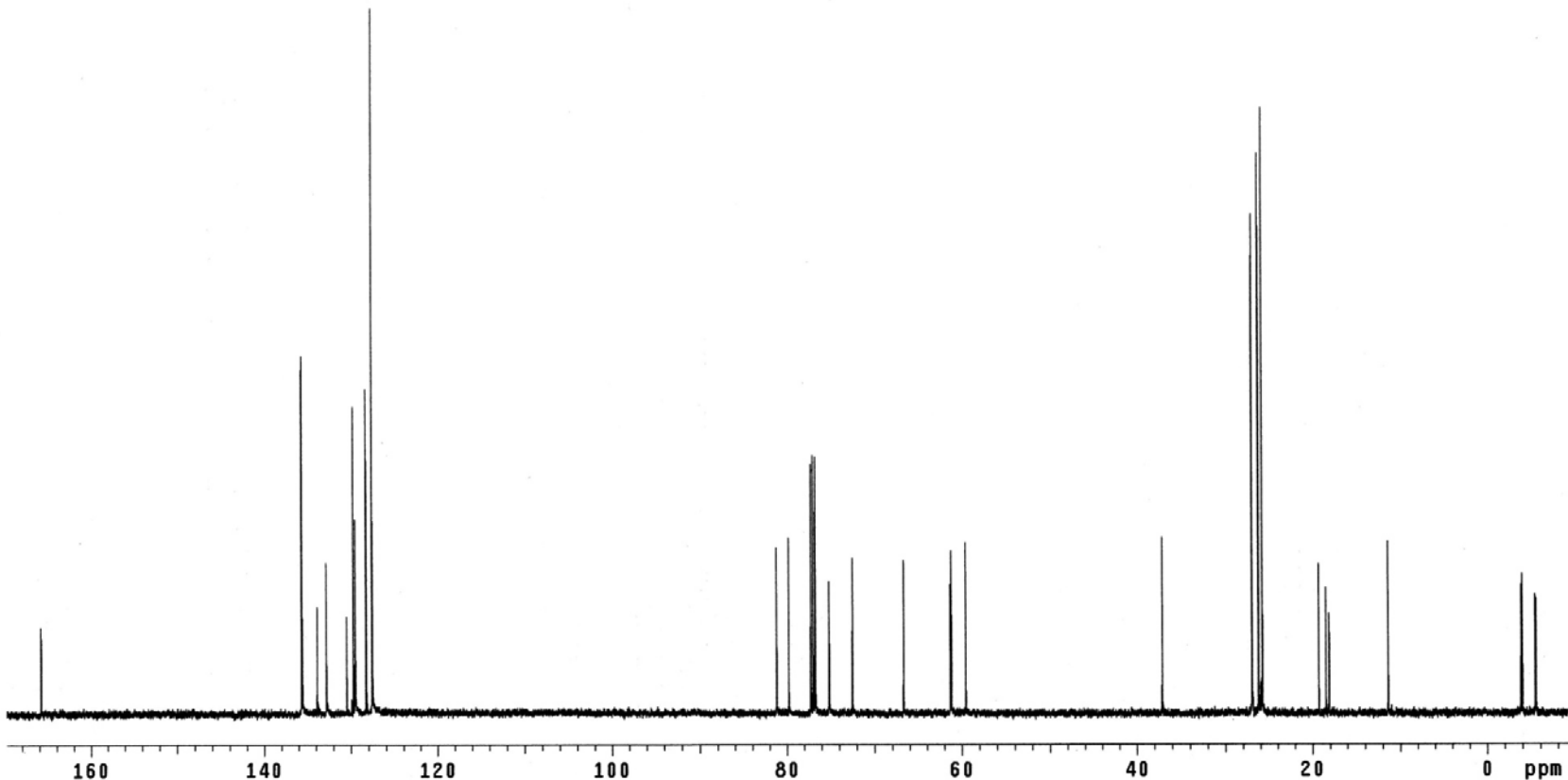


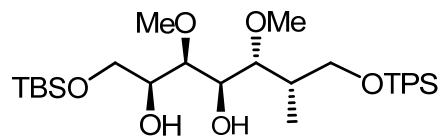






23





24

