

NO-ethanol
STANDARD 1H OBSERVE
Solvent: CDCl3
Ambient temperature
Sample #20
File: 2001
Queue name Jun22b
DATE Jun 22 58
INVOYA-300 "athos"
PULSE SEQUENCE
Relax: delay 3.500 sec
Pulse 15.0 degrees
Acq. time 3.641 sec
Width 4469.9 Hz
8 repetitions
OBSERVE H1, 299.8458031 MHz
DATA PROCESSING
Line broadening 0.3 Hz
FT size 65536
Total time 1 minute

KD-alcohol
STANDARD 1H OBSERVE

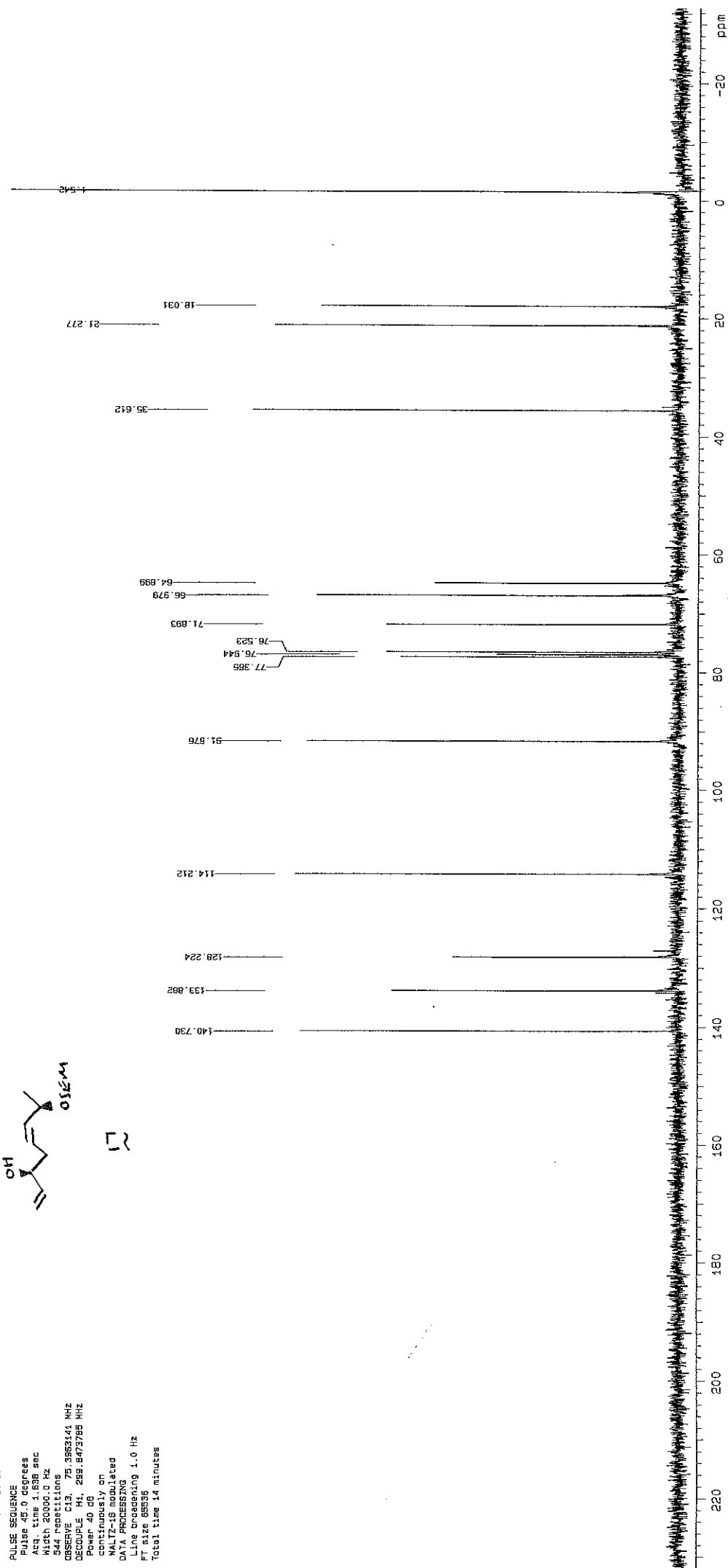
```

Solvent: CDCl3
Ambient temperature
Sample #20
Acq. file: 2002
F2 - Acquisition name Jun28b
Date_ Time Jun 28 98
INSTRUMENT: INNOVA-300
PULSE SEQUENCE
Pulse 45.0 degrees
Acq. time 1.638 sec
Width 20000.0 Hz
544 repetitions
NUC1: 13C
OBSERVE C13: 75.3632
DECOUPLE H1: 299.8477
Power 40 dB
continuously on
WALTZ-16 is modulated
DATA PROCESSING
Line broadening 1.0 Hz
SFT size 65536
Total time 14 minutes

```

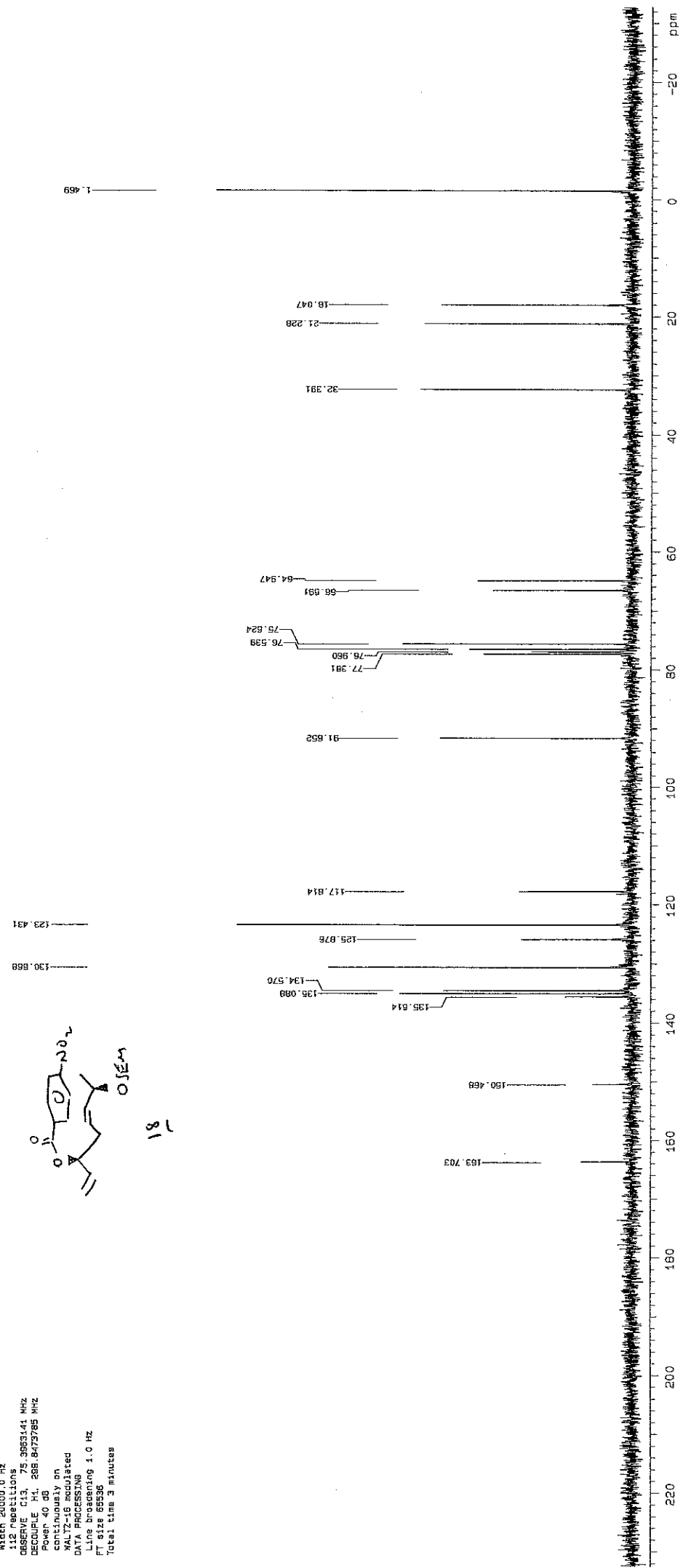
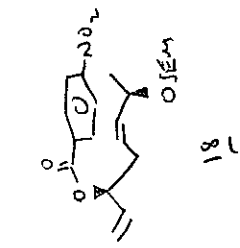
C[C@H](O)C=C[C@H](O)C

continuously on
WALTZ-16 modulated
DATA PROCESSING
Line broadening 1.0
FT size 65536
Total time 14 minutes



Kats Darling K0222 direct
STANDARD 1H OBSERVE

Solvent: CDCl3
Ambient temperature
Sample #21
File: 2102
Date name Jun1b
DATE Jun 11 SB
INOVA-300 "athos"
PULSE SEQUENCE
Pulse 45.0 degrees
Acq. time 1.638 sec
Width 20000.0 Hz
112 repetitions
OBSERVE C13, 75.3553141 MHz
DECOUPLE H1, 288.8473785 MHz
Power 40 dB
continuously on
WALTZ-16 modulated
DATA PROCESSING
Line broadening 1.0 Hz
FI size 65536
Total time 3 minutes



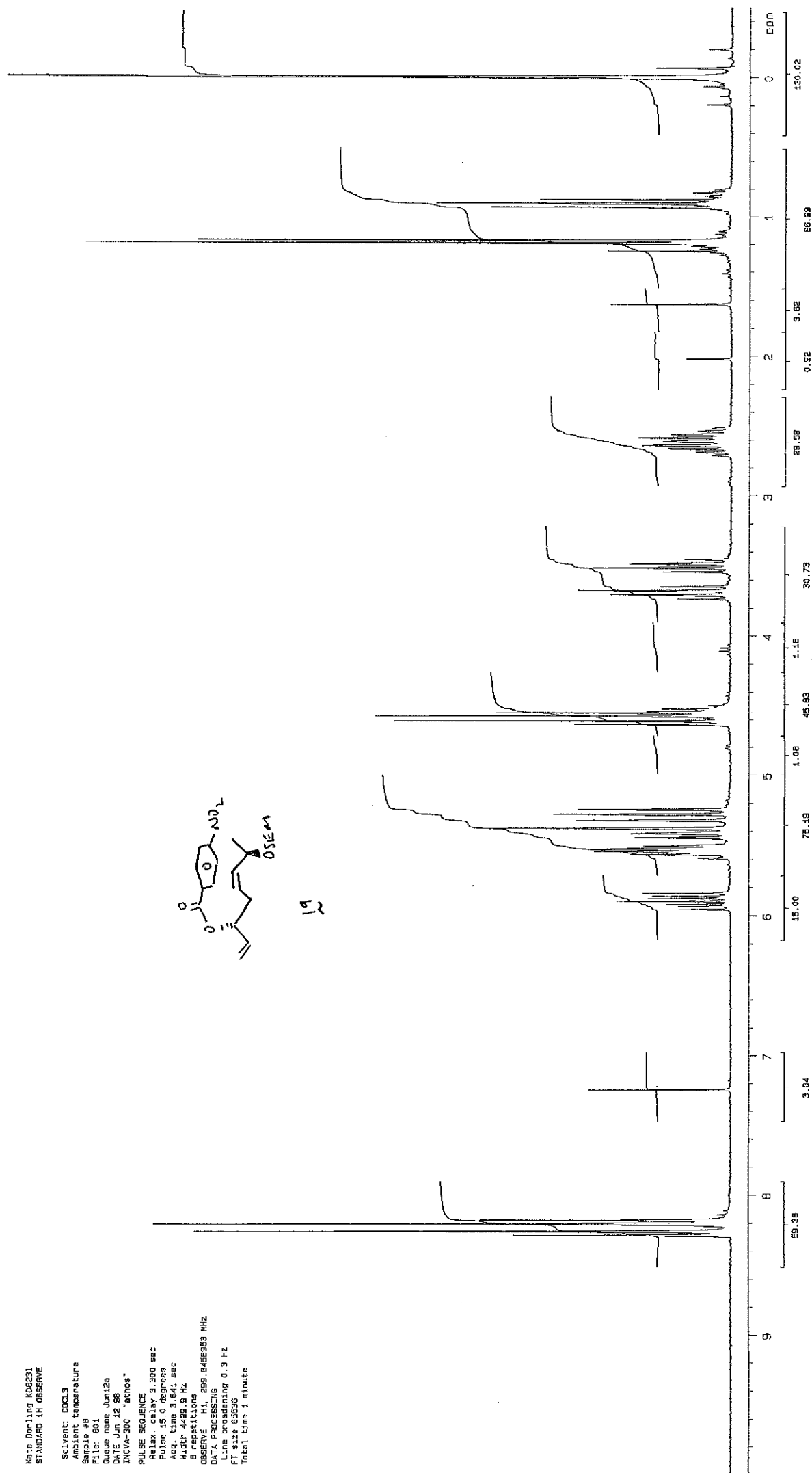
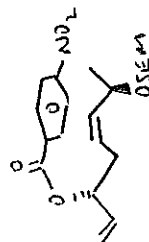
Kate Durling K08231
STANDARD 1H OBSERVE

Solvent: CDCl3
Ambient temperature
Sample #9
File: 801
Queue name Jun12a
DATE Jun 12 06
INOVA-300 "achos"

PULSE SEQUENCE

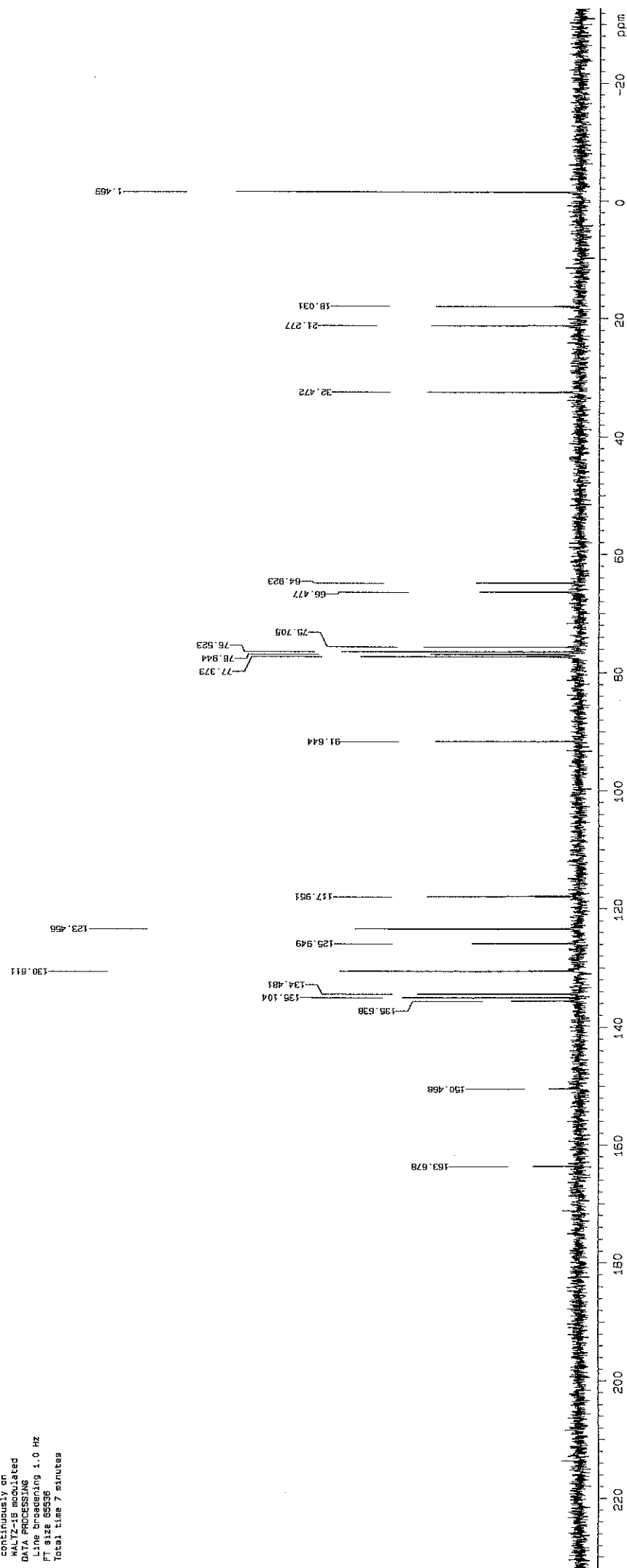
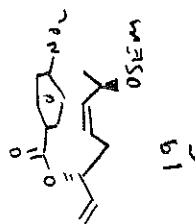
Relax. delay 3.000 sec
Pulse 45.0 degrees
Acq. time 3.641 sec
Width 4499.9 Hz
repetitions 8

OBSERVE H1, 299.8448953 MHz
DATA PROCESSING
Line broadening 0.3 Hz
FT size 85536
Total time 1 minute



Kate Dorling K08231
STANDARD 1H OBSERVE

Solvent: COCL₃
Ambient temperature
Sample #8
File: B02
Date: 11/12/98
Operator: nms
Acq Date: Jun 12 98
INNOVA-300 "athos"
PULSE SEQUENCE
Pulse 45.0 degrees
Acq. time 1.639 sec
Width 2000.0 n Hz
256 repetitions
OBSERVE C13 75.3660
DECOUPLE H1 299.8470
Power 40 dB
continuously on
WALTZ-16 modulated
DATA PROCESSING
Line broadening 1.0
SI size 65536
Total time 7 minutes



Kate Dorling K0228
STANDARD 1H OBSERVE

Solvent: CDCl₃

Ambient temperature

Sample #4

File: 401

Queue name Jun13a

DATE Jun 13 09

INOVA-300 "athos"

PULSE SEQUENCE

Relax. delay 3.300 sec

Pulse 15.0 degrees

Acq. time 3.641 sec

Width 4499.3 Hz

8 repetitions

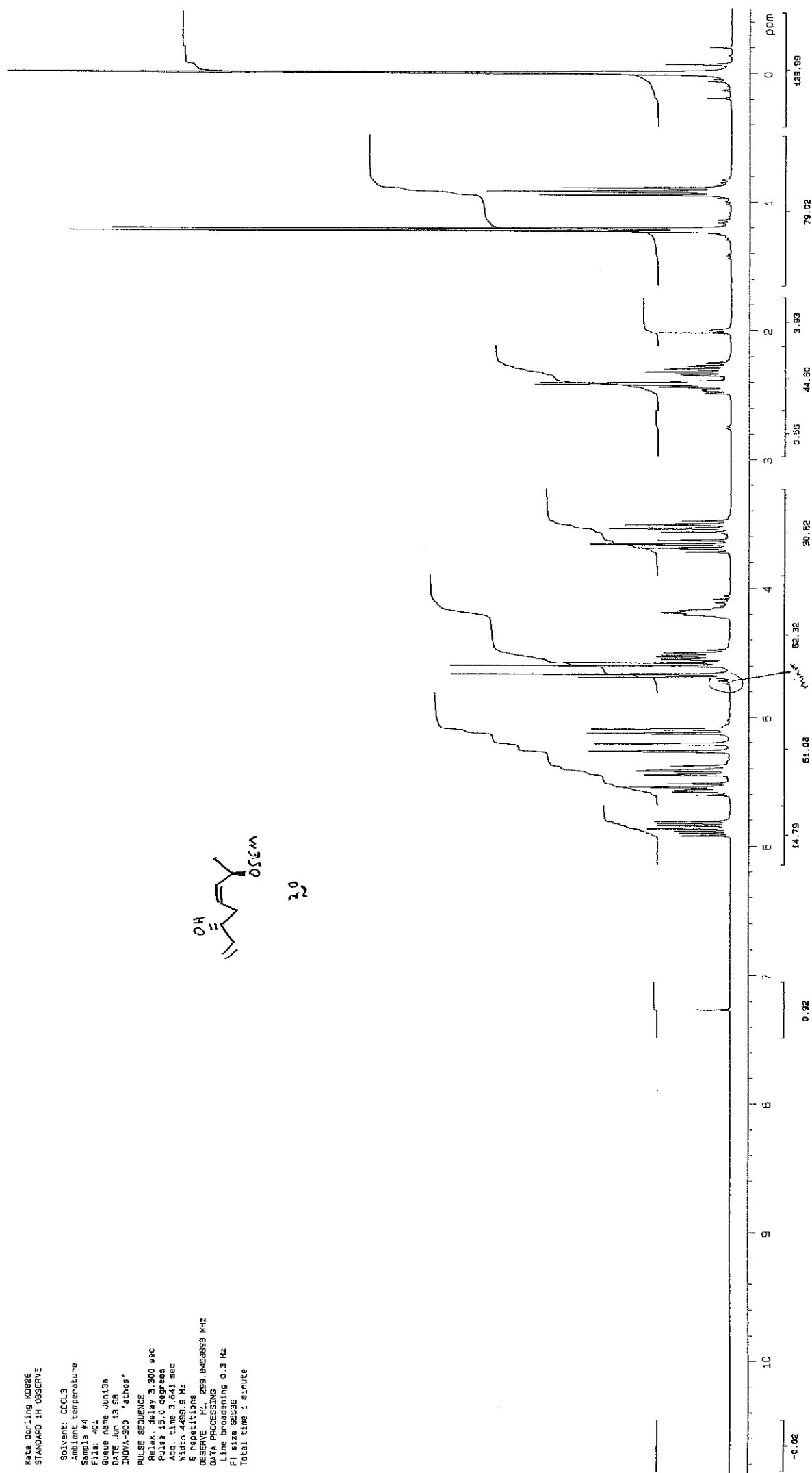
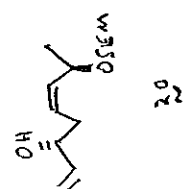
OBSERVE H1 299.845898 MHz

DATA PROCESSING

Line broadening 0.3 Hz

FI size 68538

Total time 1 minute



KATE DORLING LINDS/TSQ/NE
STANDARD 1H OBSERVE

Solvent: CDCl₃
Ambient temperature
Sample #32
File: 3201
Date: 11/05/2009
Time: 11:59
NOVA-300 "Series"

PULSE SEQUENCE

Relax. delay 3.300 sec

Pulse 15.0 degrees

Acq. time 3.641 sec

Width 4488.9 Hz

Repetitions 1000

Observed F1 89.8458008 MHz

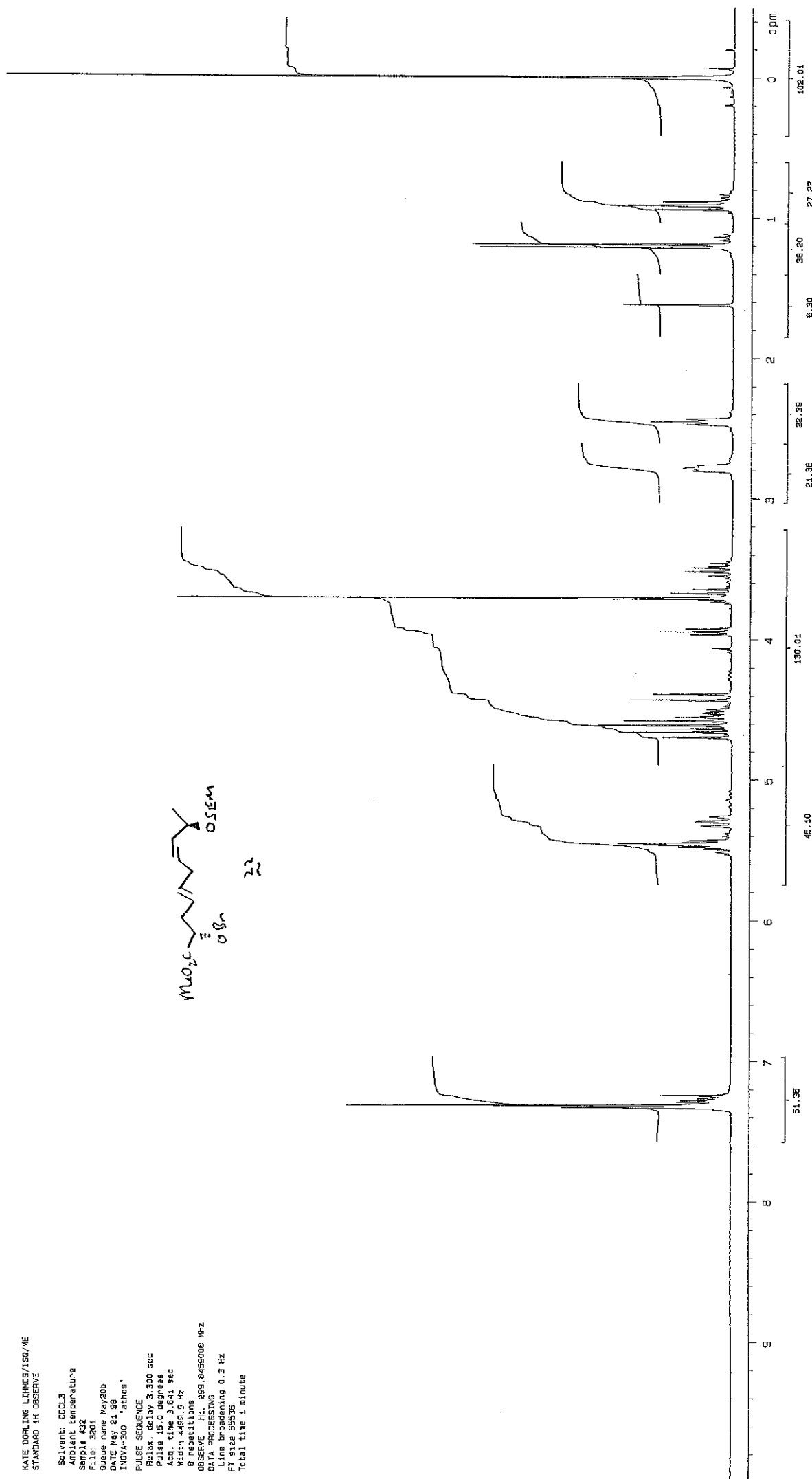
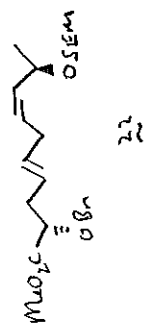
Observed F2 101.6251212 MHz

DATA PROCESSING

Line broadening 0.3 Hz

FT size 65536

Total time 1 minute

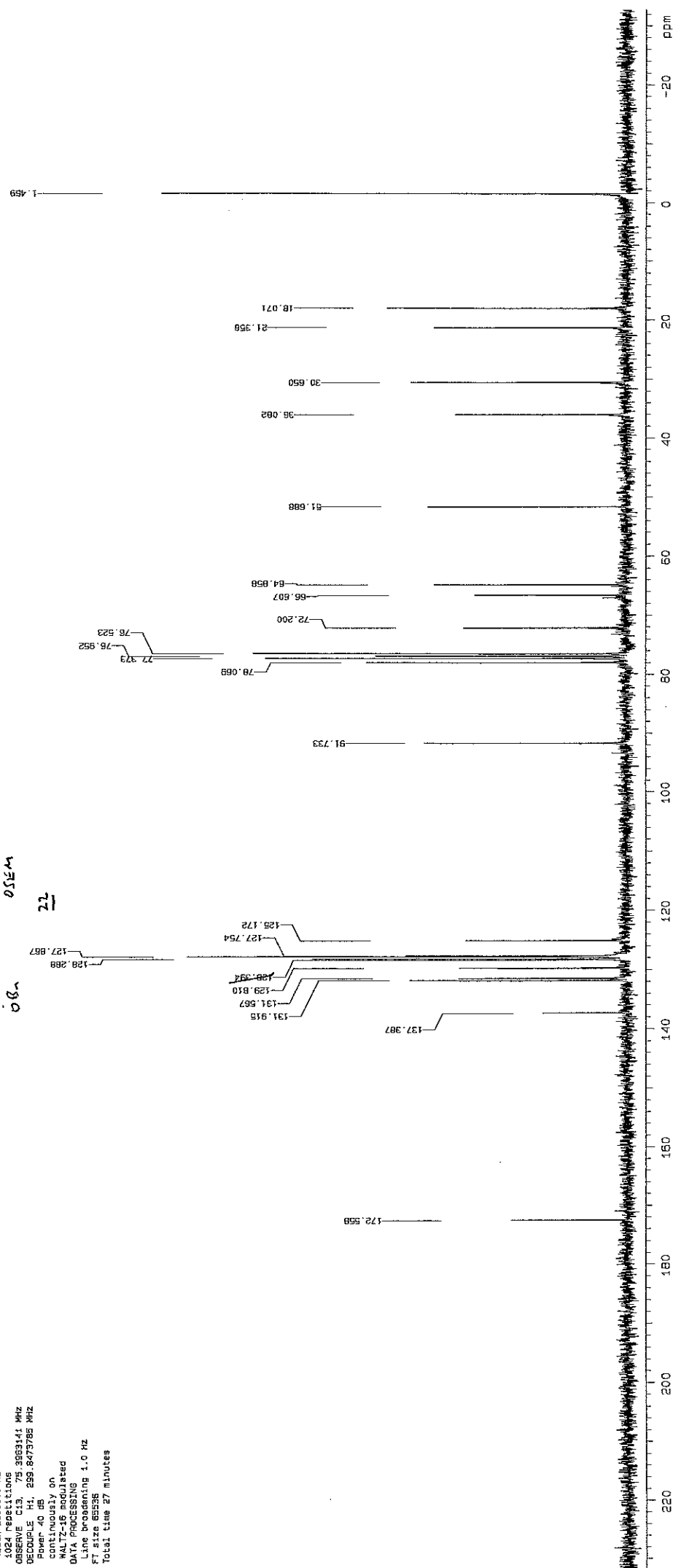
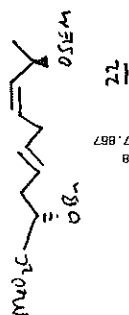


KATE DORLING LIHMDS/ISG/ME
STANDARD 1H OBSERVE

```

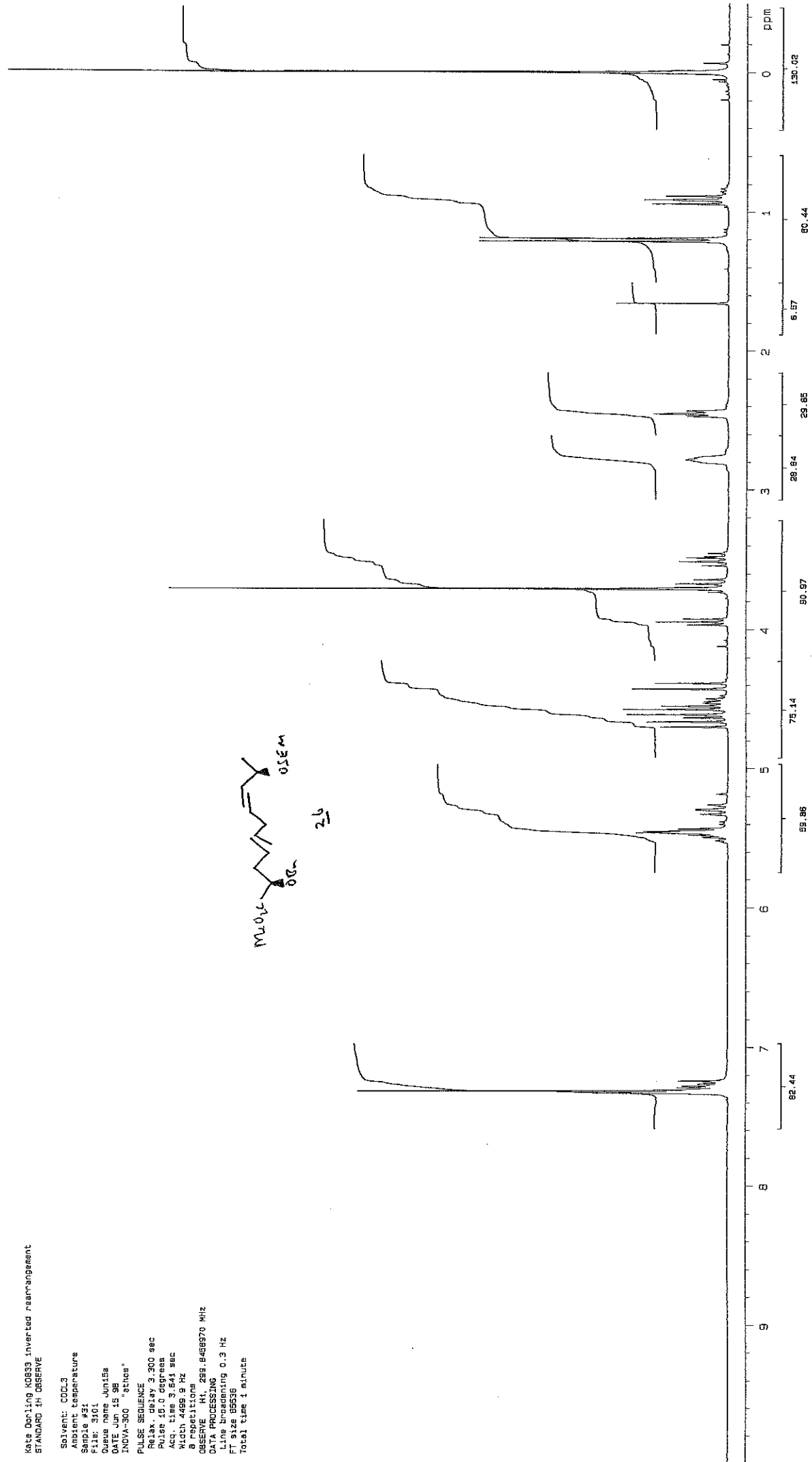
Solvent: CDCl3
Aromatic temperature
Sample #32
File: 3202
Queue name May20b
DATE May 21 98
INNOVA-300 "athos"
PULSE SEQUENCE
Pulse 45.0 degrees
Acq. time 1.638 sec
Wdth 20000.0 Hz
1024 repetitions
OBSERVE C13, 259.847385 MHz
DECOUPLE H1, 259.847385 MHz
Power 40 dB
Continuously on
No decoupling used
DATA PROCESSING
Line broadening 4.0 Hz
F1 size 65356
Total time 47 minutes

```



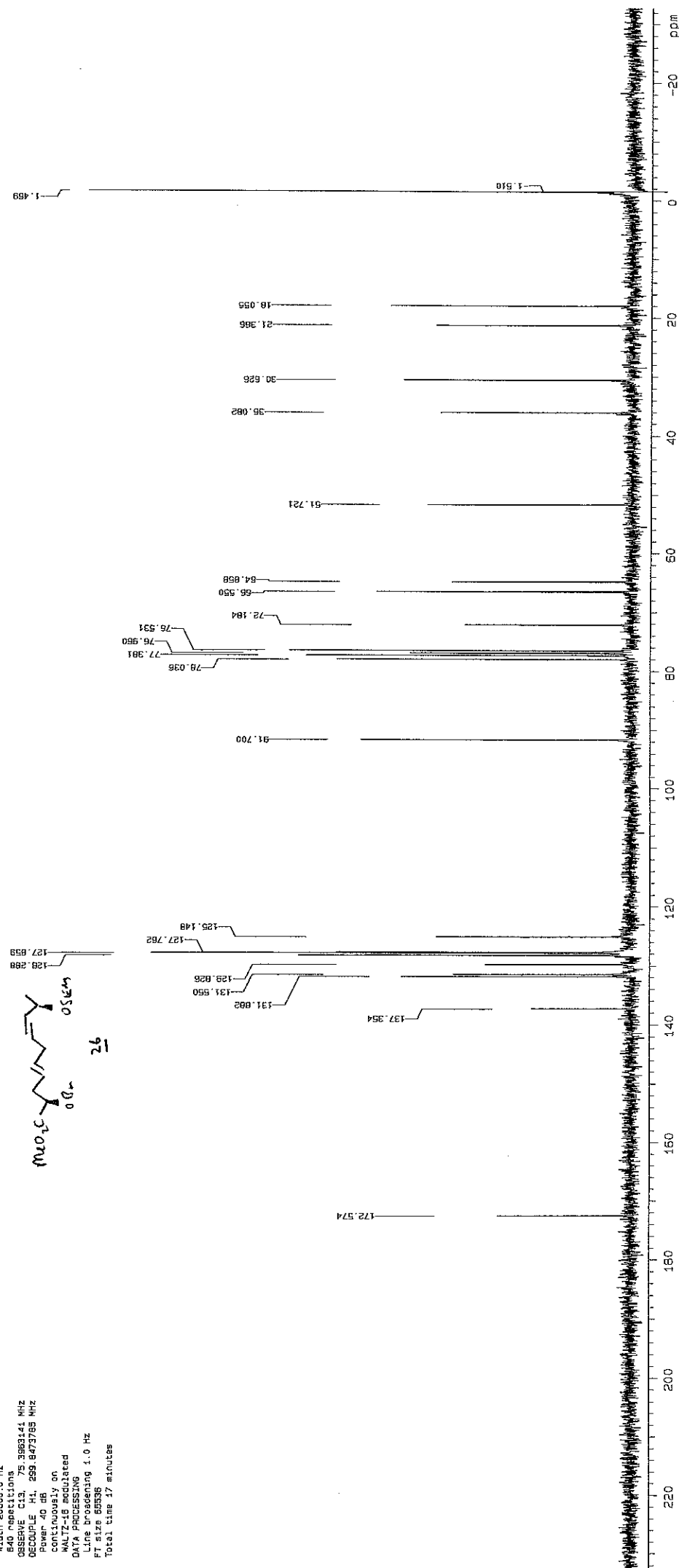
Kate Dörfling U0833 inverted rearrangement
STANDARD 1H OBSERVE

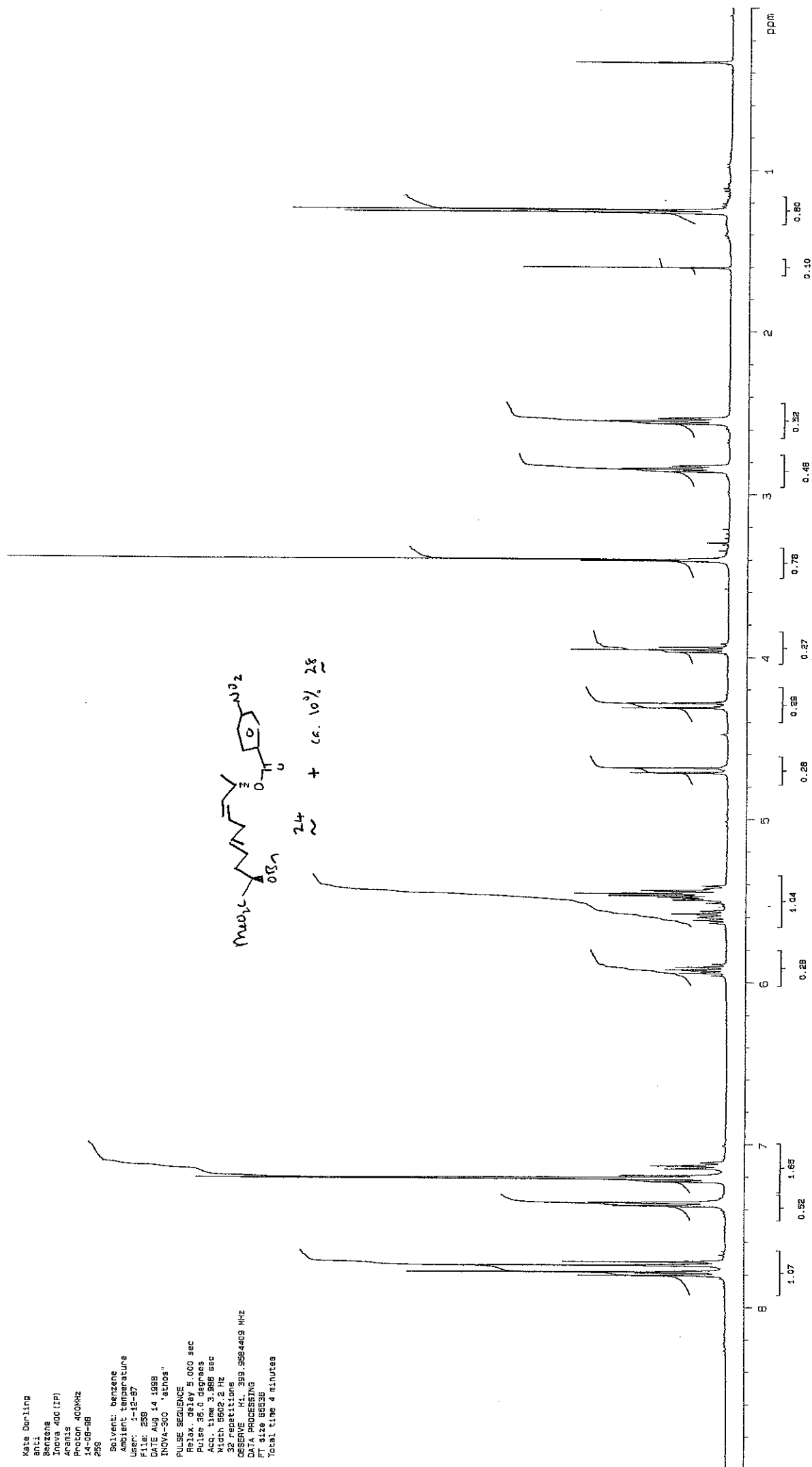
Solvent: CDCl3
Ambient temperature
Sample #31
File: 3101
Queue name: Jun15a
DATE: Jun 15 98
INOVA-300 8lines"
PULSE SEQUENCE
Relax. delay 3.300 sec
Pulse 15.0 degrees
Acq. time 3.641 sec
Width 4499.9 Hz
8 repetitions
OBSERVE M1, 299.8458970 MHz
DATA PROCESSING
Line broadening 0.3 Hz
FT size 65536
Total time 1 minute



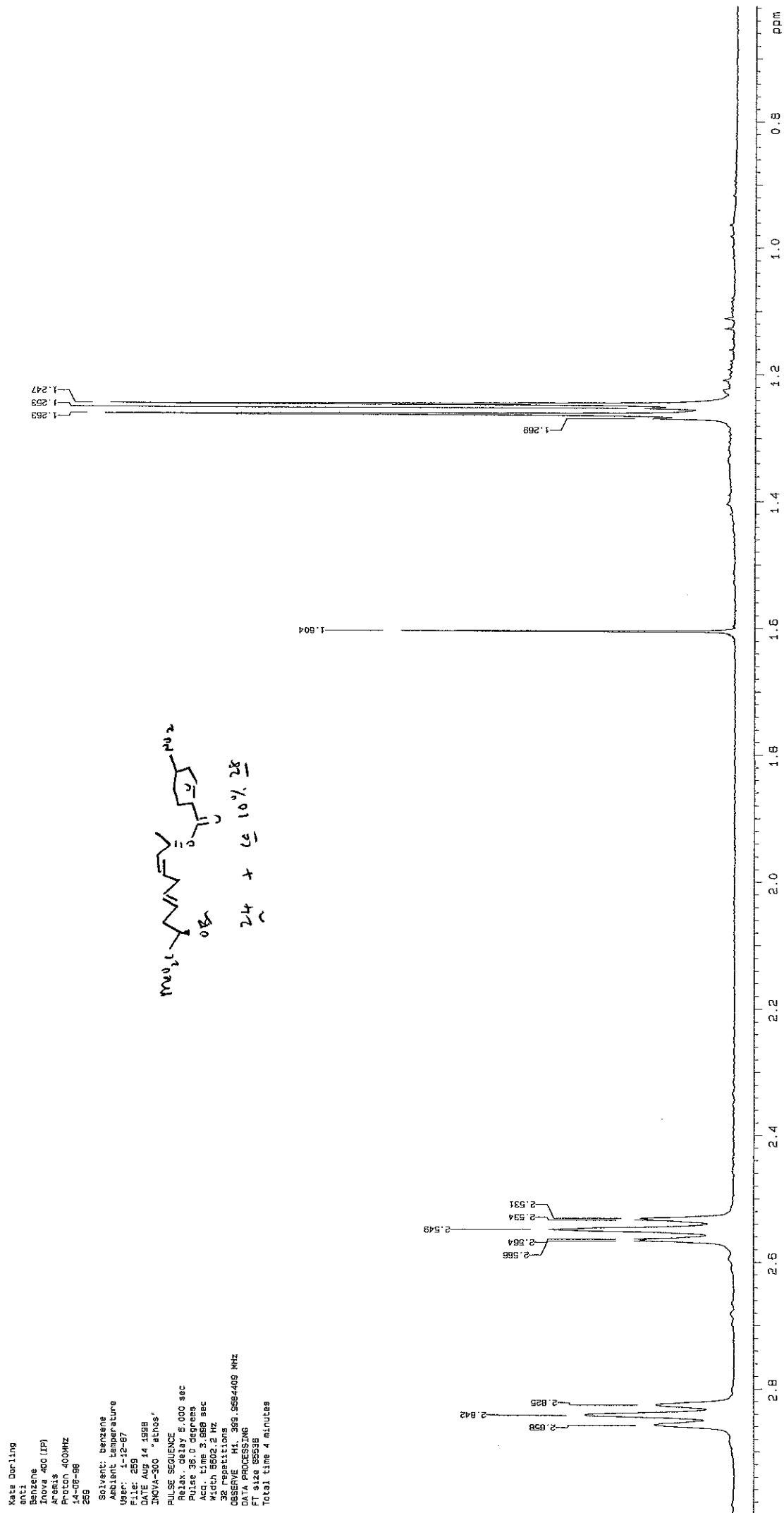
Kate Dooling 10833 inverted rearrangement
STANDARD 1H OBSERVE

Solvent: CDCl₃
Ambient temperature
Sample #31
File: 3102
Date: June 15
Time: 15:00
INOVA-300 'actos'
PULSE SEQUENCE
Pulse 45.0 degrees
Acq. time 1.538 sec
Width 20000.0 Hz
840 repetitions
OBSERVE CH: 75.3083144 MHz
OBSERVE P1: 299.6473765 MHz
P1: 40 dB
Continuously on
WALTZ-16 Modulated
DATA PROCESSING
Line broadening 1.0 Hz
FT size 65536
Total time 17 minutes





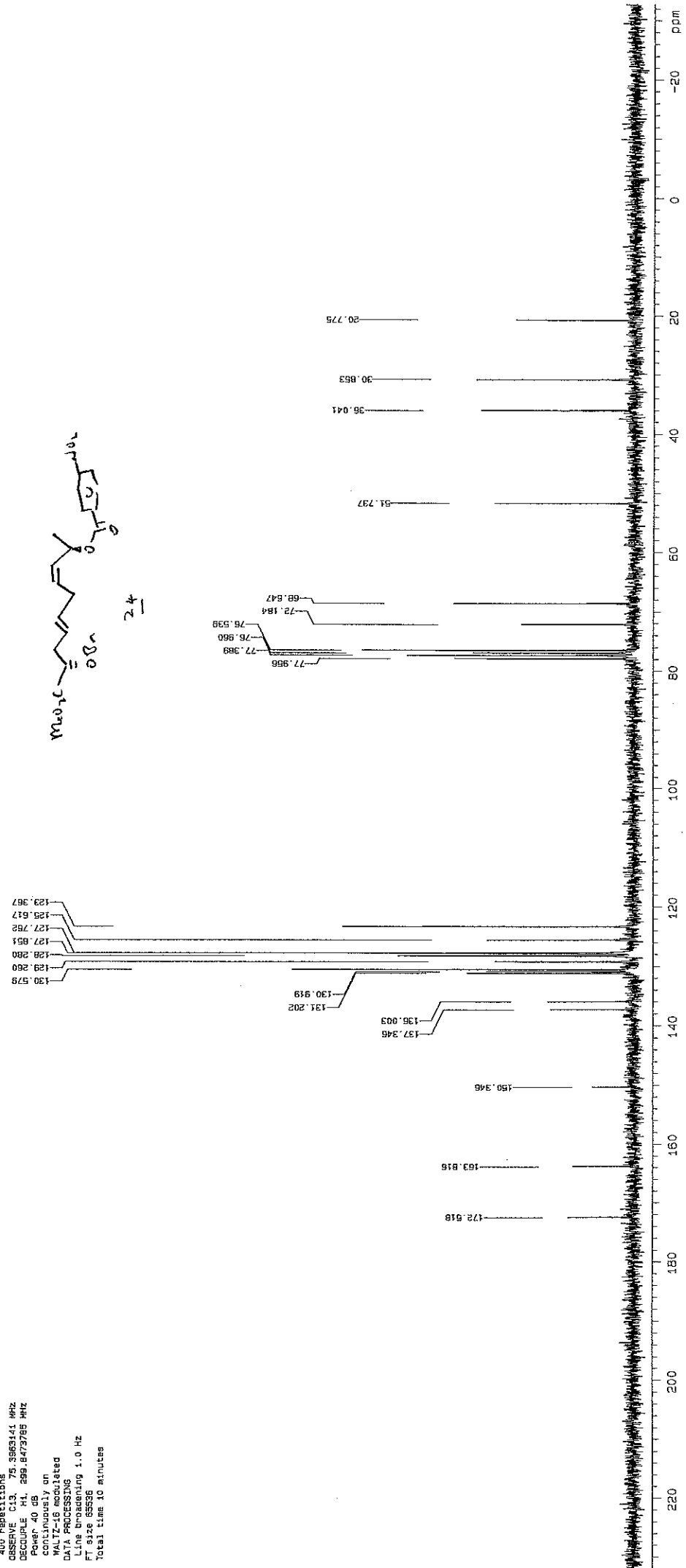
Kate Darling
anti
Benzene
Inova 400 (IP)
Aramis
Proton 400MHz
14-06-96
259
Solvent: benzene
Ambient temperature
User: 1-12-97
File: 259
DATE AUG 14 1998
INOVA-300 "athos"
PULSE SEQUENCE
P1: 3.00 sec
P2: 3.00 sec
P3: 3.00 sec
Acq. time 3.598 sec
Width 8002.2 Hz
32 repetitions
OBSERVE M1 399.5594409 MHz
DATA PROCESSING
FT size 65536
Total time 4 minutes

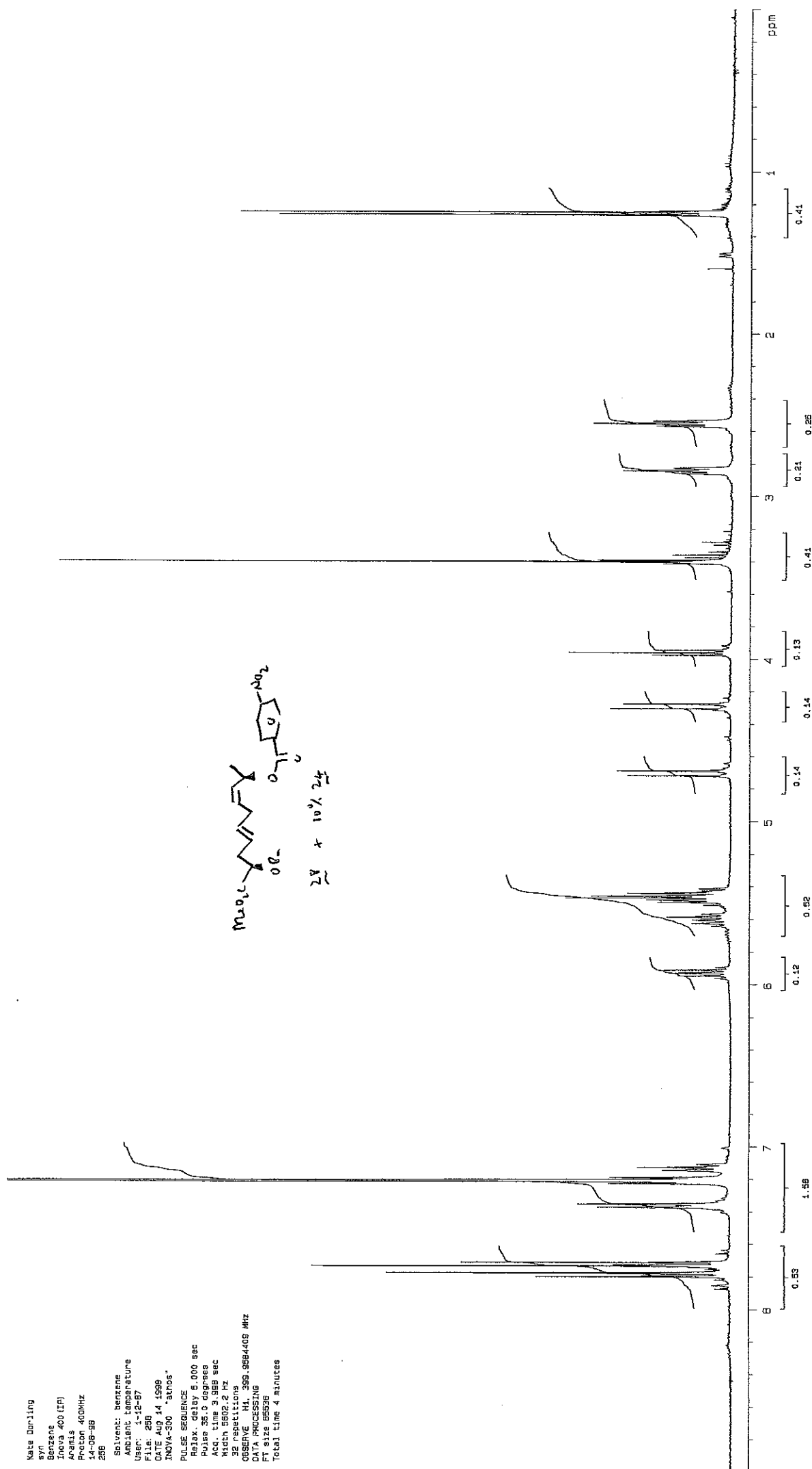
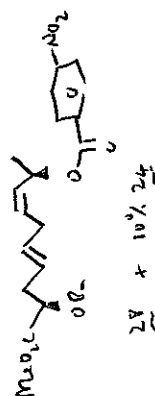


Kate Darling
NMR
Benzene
Inova 400 (IP)
Arenis
Proton 400MHz
14-DB-98
259
Solvent: benzene
Acidic temperature
Acidic 25-27
Date: 259
DATE AUG 14 1998
INOVA-300 "athos"
PULSE SEQUENCE
Relax. delay 5.000 sec
Pulse 35.0 degrees
Acq. time 3.388 sec
Meth 3002.2 Hz
3000000000 Hz
OBSERVE 1H1 399.959409 MHz
DATA PROCESSING
FT size 55336
Total time 4 minutes

Kate Dorling KD797 Mitsunobu inversion
13C OBSERVE

Solvent: CDCl3
Ambient temperature
Sample #24
File: 2401
Queue name Jun01b
DATE Jun 1 98
INOVA-300 "ethos"
PULSE SEQUENCE
Pulse 45.0 degrees
Acq. time 1.438 sec
Width 20000.0 Hz
400 repetitions
OBSERVE C13, 75.3963141 MHz
DECOUPLE H1, 299.8473785 MHz
Power 40 dB
continuously on
WALTZ-16 modulated
DATA PROCESSING
Line broadening 1.0 Hz
F1 size 65536
Total time 10 minutes





NO 788
13C OBSERVE

Solvent: CDCl₃
Ambient temperature
Sample #1
File: 101
Queue name Jun02b
DATE JUN 2 98
INNOVA-300 "athos"
PULSE SEQUENCE
Pulpr 45.0 degrees
Acq. time 1.538 sec
Width 20000.0 Hz
544 repetitions
OBSERVE C13, 75.3563141 MHz
DECOUPLE H1, 285.8473785 MHz
Power 40 dB
continuously on
WALTZ-16 modulated
DATA PROCESSING
Line broadening 1.0 Hz
FI size 65536
Total time 14 minutes

129.375
129.817
127.770
127.867
128.288
129.243
130.587

77.947
77.397
76.976
76.547
72.182
58.647

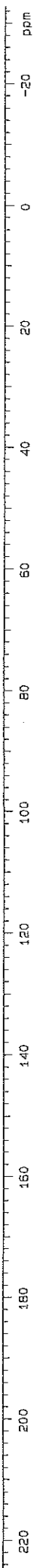
137.338
136.003
131.219
130.935

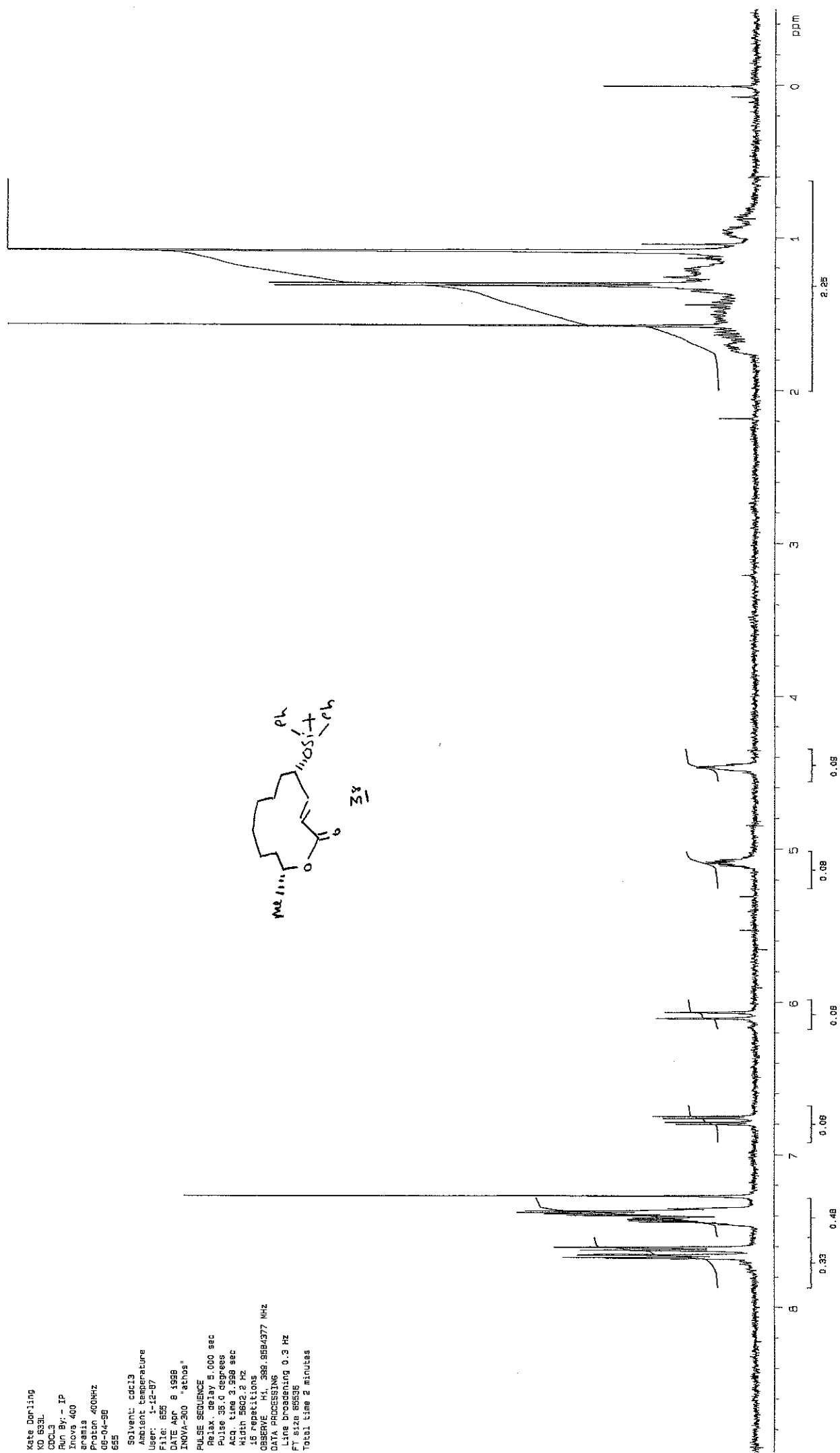
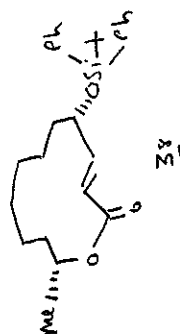
150.346
163.832
172.534

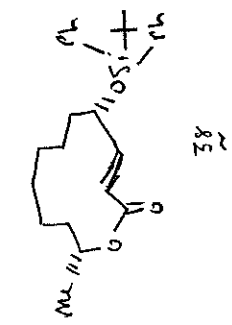
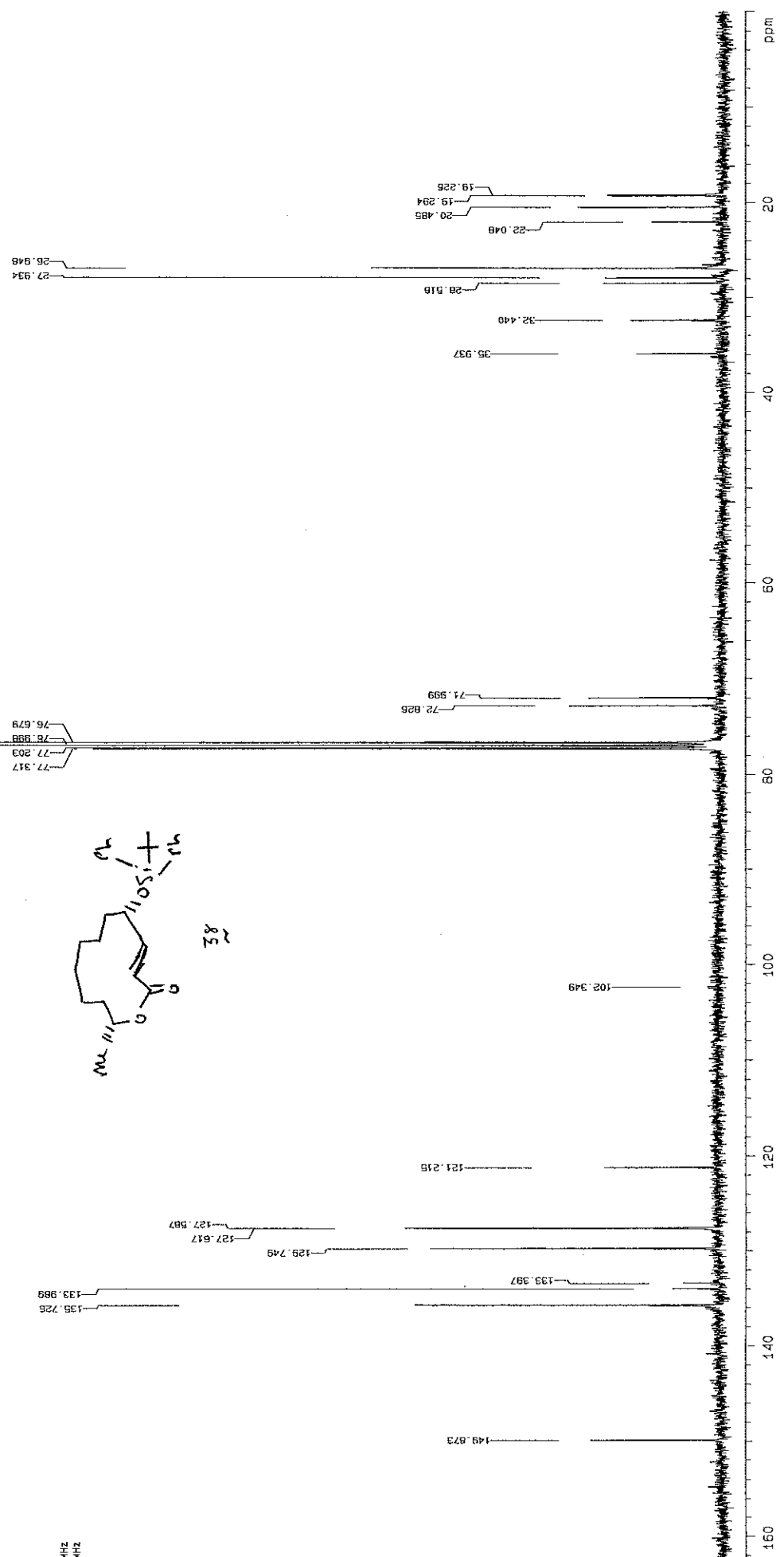
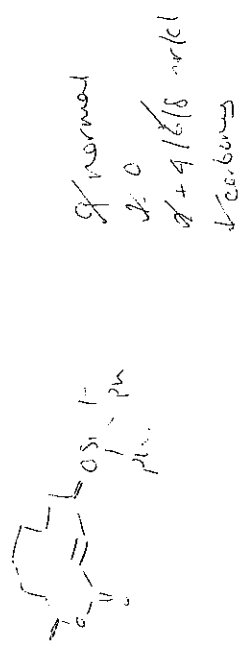
20.775
30.877
36.049

51.745

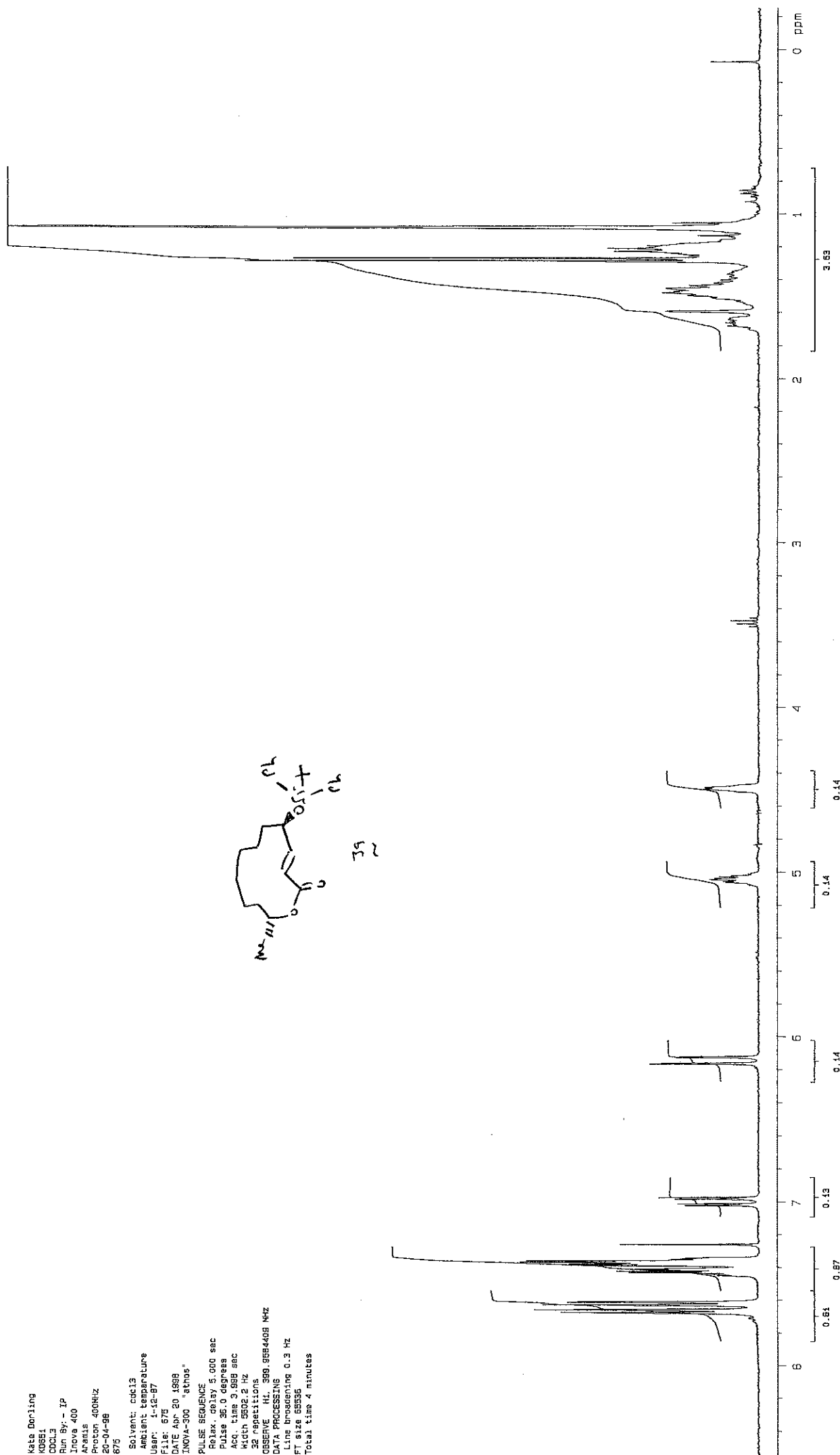
0.951







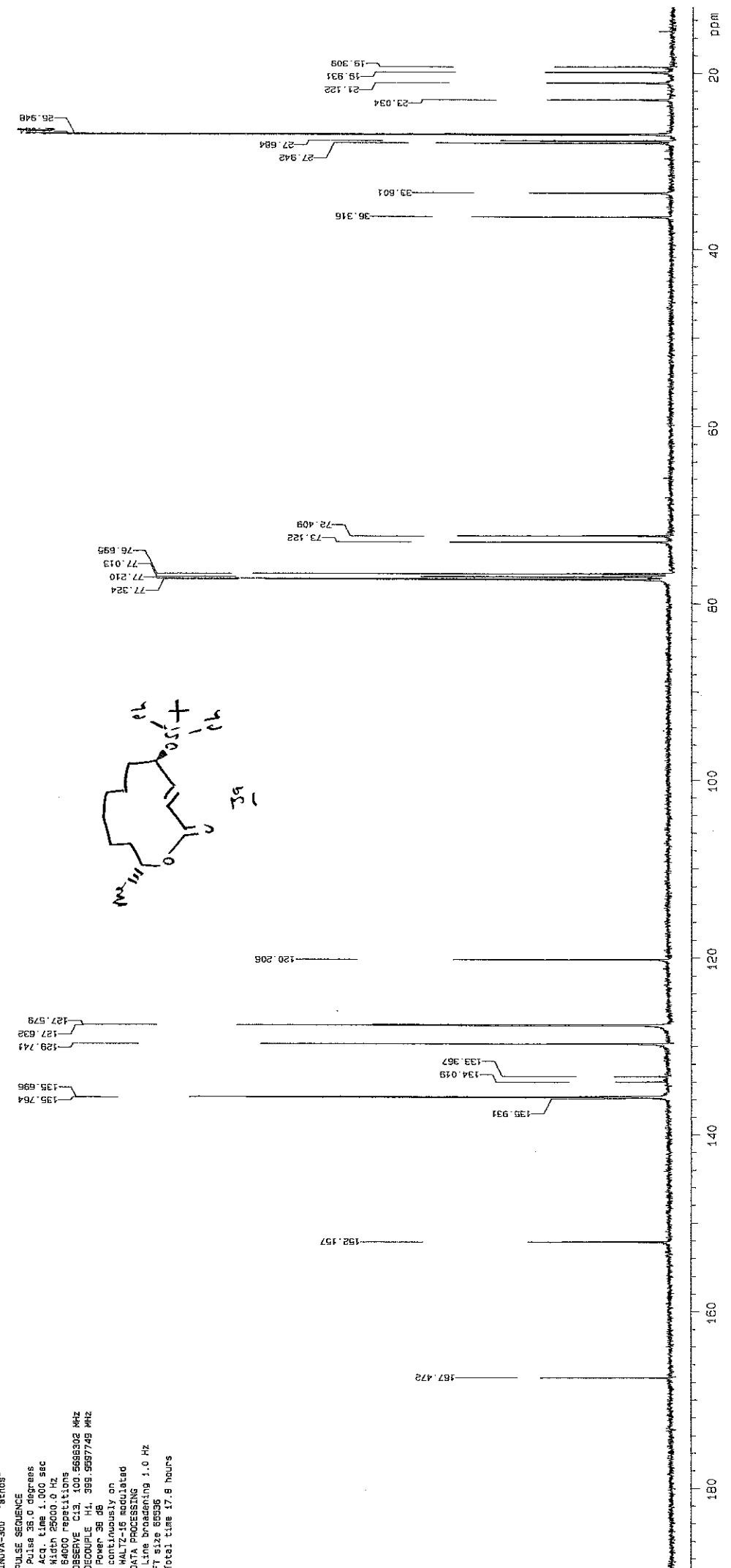
Kate Dorling
KD 533L
C00L3
Run By: - IP
Inova 400
araris
13C 100MHz
08-04-98
855C
Solvent: cdcl3
Ambient temperature
File: 655
DATE Apr 8 1998
INVA-300 "athos"
PULSE SEQUENCE
Pulse 36.0 degrees
Acq. time 1.000 sec
Width 25000.0 Hz
5913 repetitions
OBSERVE C13 100.626302 MHz
DECOUPLE H1 399.957748 MHz
Power 35 dB
continuously on
WALTZ-16 modulated
DATA PROCESSING
Line broadening 1.0 Hz
File size 65256
Total time 18.4 hours



Kate Dorling
K0851
CDCl₃
Run By - IP
Inova 400
Aramis
Proton 400MHz
20-04-98
675
Solvent: cdcl3
Ambient temperature
User: 12-12-97
File: 675
DATE Acq 20 1998
INOVA-300 "atmos"
PULSE SEQUENCE
Relax. delay 5.000 sec
Pulse 35.0 degrees
Acq. time 3.698 sec
Width 5502.2 Hz
32 repetitions
OBSERVE H1 399.965408 MHz
DATA PROCESSING
Line broadening 0.3 Hz
FT size 65536
Total time 4 minutes

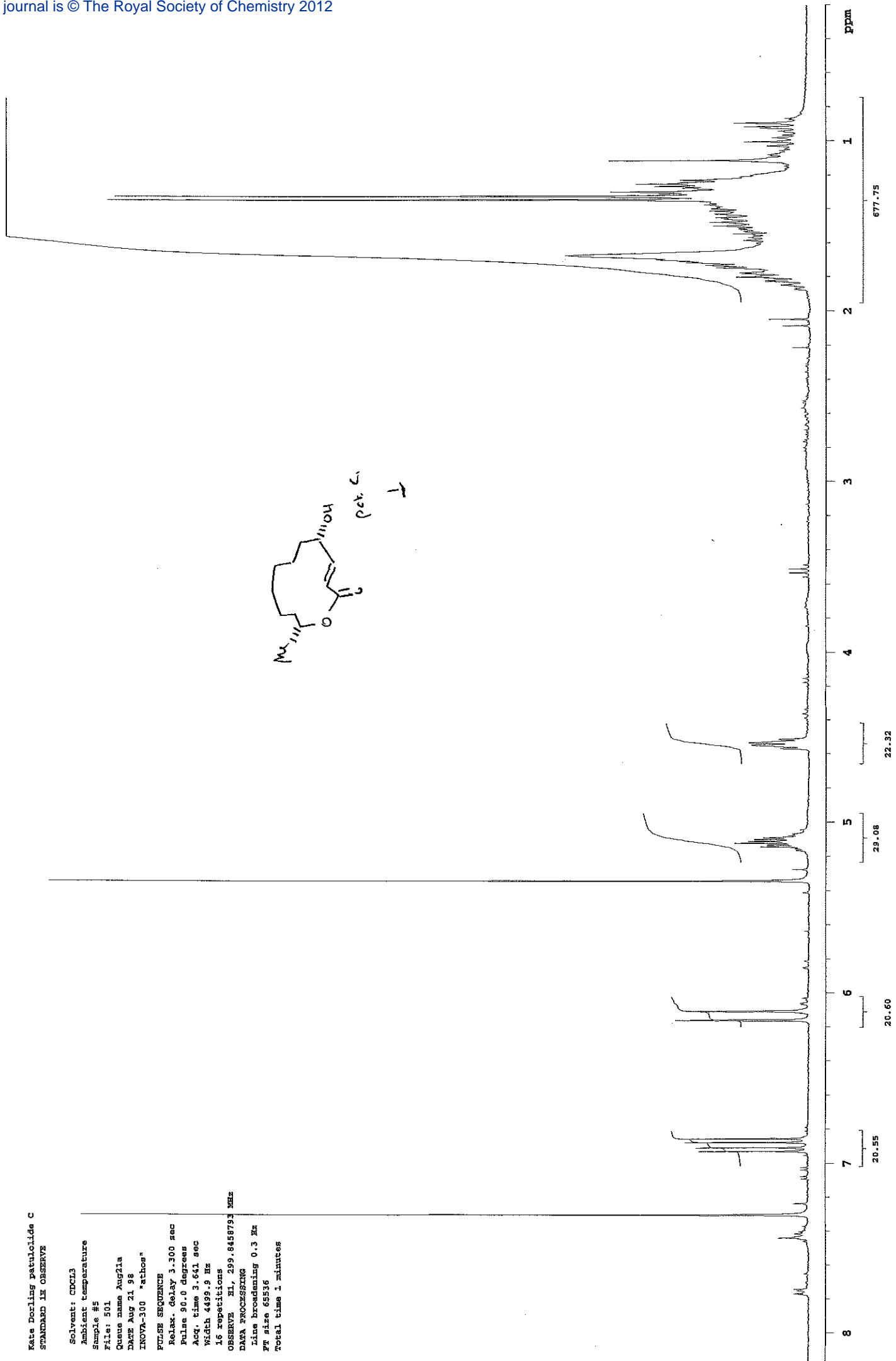
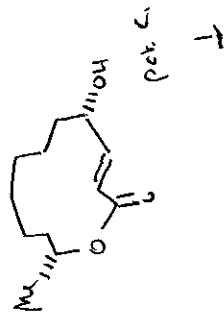
Kata Dorling
K0851
CDCL3
Run By: - IP
Inova 400
Araxis
13C 100MHz
20-04-98
875C

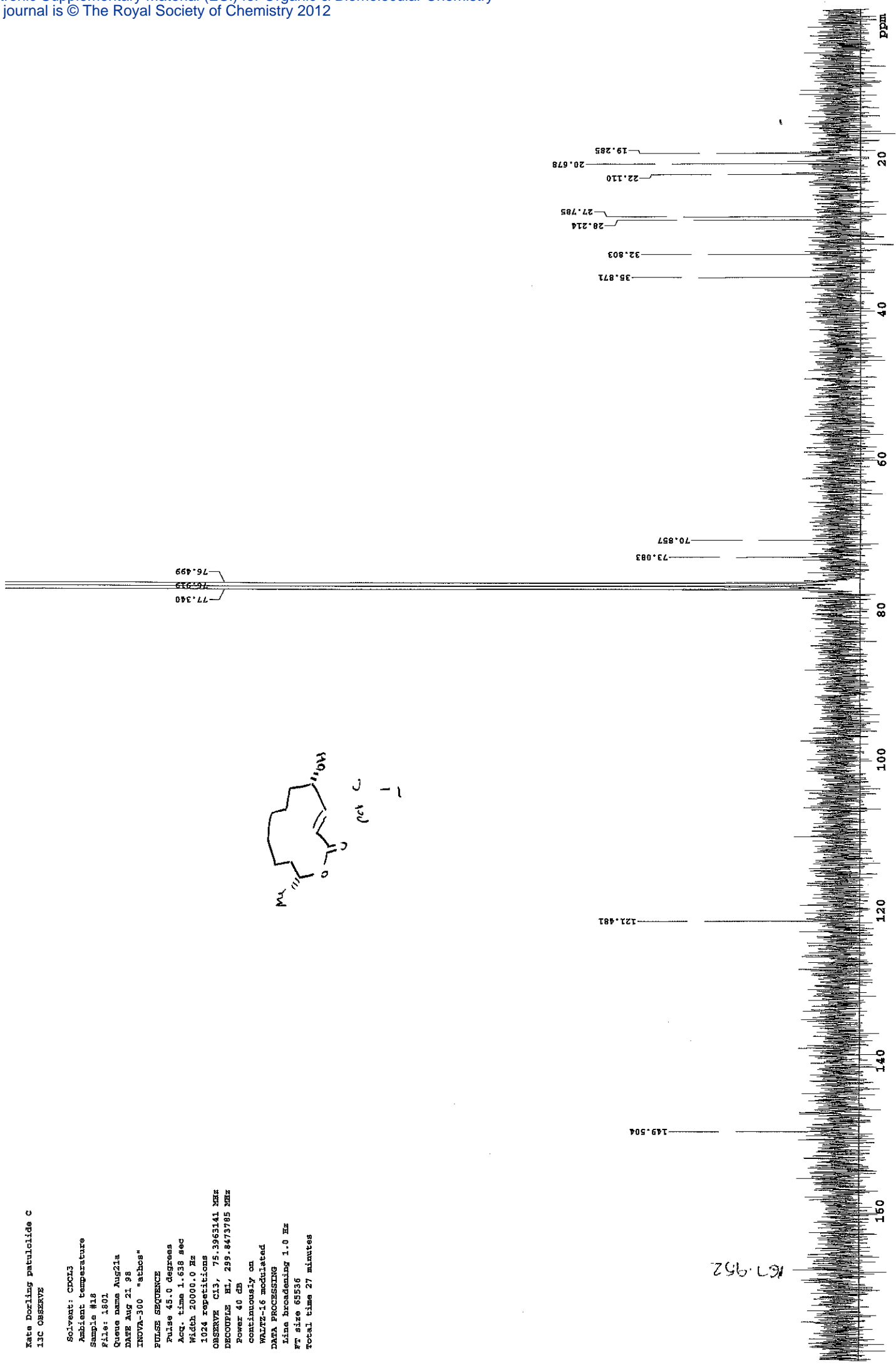
Solvent: cdcl3
Ambient temperature
File: 875
DATE: Apr 20 1998
INNOVA-400 "Araxis"
PULSE SEQUENCE
Pulse 35.0 degrees
Acq. time 1.000 sec
Width 25000.0 Hz
64000 repetitions
OBSERVE C13, 100.5665302 MHz
DECUPLE H1, 399.9957749 MHz
Power 35 dB
continuously on
WALTZ-15 modulated
DATA PROCESSING
Line broadening 1.0 Hz
FT size 65536
Total time 17.8 hours



Kate Dorling patulolide C
STANDARD 1H OBSERVE

Solvent: CDCl3
Ambient temperature
Sample #5
File: 501
Queue name Aug21a
DATE Aug 21 98
INOVA-300 "athos"
PULSE SEQUENCE
Relax. delay 3.300 sec
Pulse 90.0 degrees
Acq. time 3.641 sec
Width 4499.9 Hz
16 repetitions
OBSERVE H1, 299.8458793 MHz
DATA PROCESSING
Line broadening 0.3 Hz
FT size 65536
Total time 1 minutes





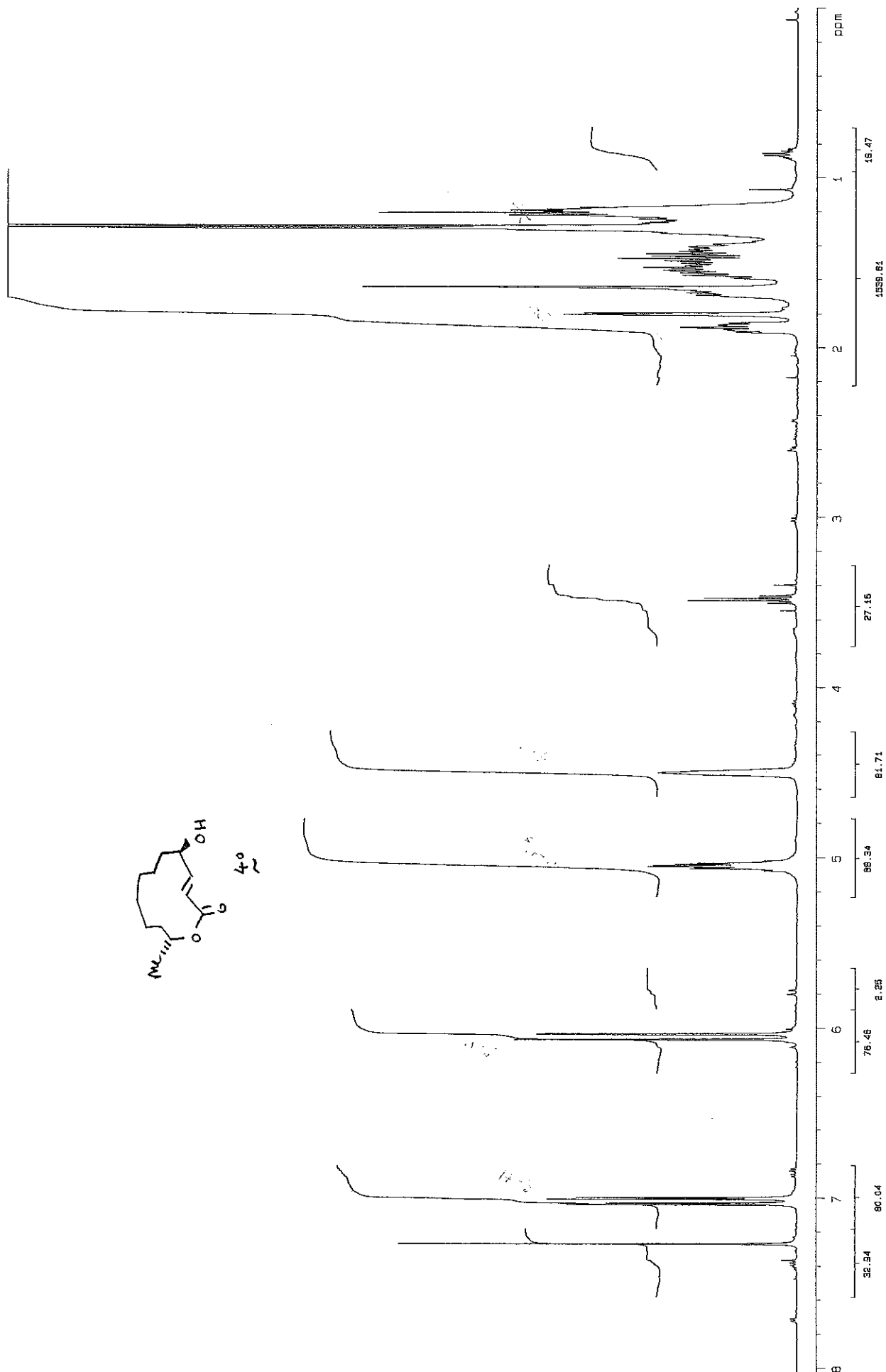
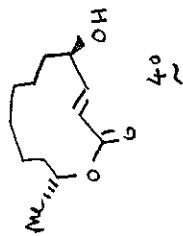
Kate Dorling patulolide C
13C OBSERVE

Solvent: CDCl3
Ambient temperature
Sample #18
File: 1801
Queue name Aug21a
DATE Aug 21 98
INVT-300 "athos"

PULSE SEQUENCE
Pulse 45.0 degrees
Acq. time 1.638 sec
Width 20000.0 Hz
1024 repetitions
OBSERVE C13, 75.3963141 MHz
DECOUPLE H1, 299.8473785 MHz
Power 40 dB
continuously on

WALTZ-16 modulated
DATA PROCESSING
Line broadening 1.0 Hz
FT size 65536
Total time 27 minutes

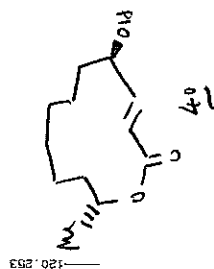
Kate Dorling
K0803
CDCl3
Run By: - IP
Standard H-1 parameters
5 mm PFG triple probe
31-03-88
485
Solvent: cdcl3
Ambient temperature
User: 1-15-87
File: 456
DATE: Mar 31 95
INQVA-300 "actos"
PULSE SEQUENCE
Relax. delay 5.000 sec
Pulse 101.4 degrees
Acq. time 4.000 sec
Width 7000.4 Hz
16 repetitions
OBSERVE H1 459.8527844 MHz
DATA PROCESSING
Line broadening 0.3 Hz
Ft size 85536
Total time 2 minutes



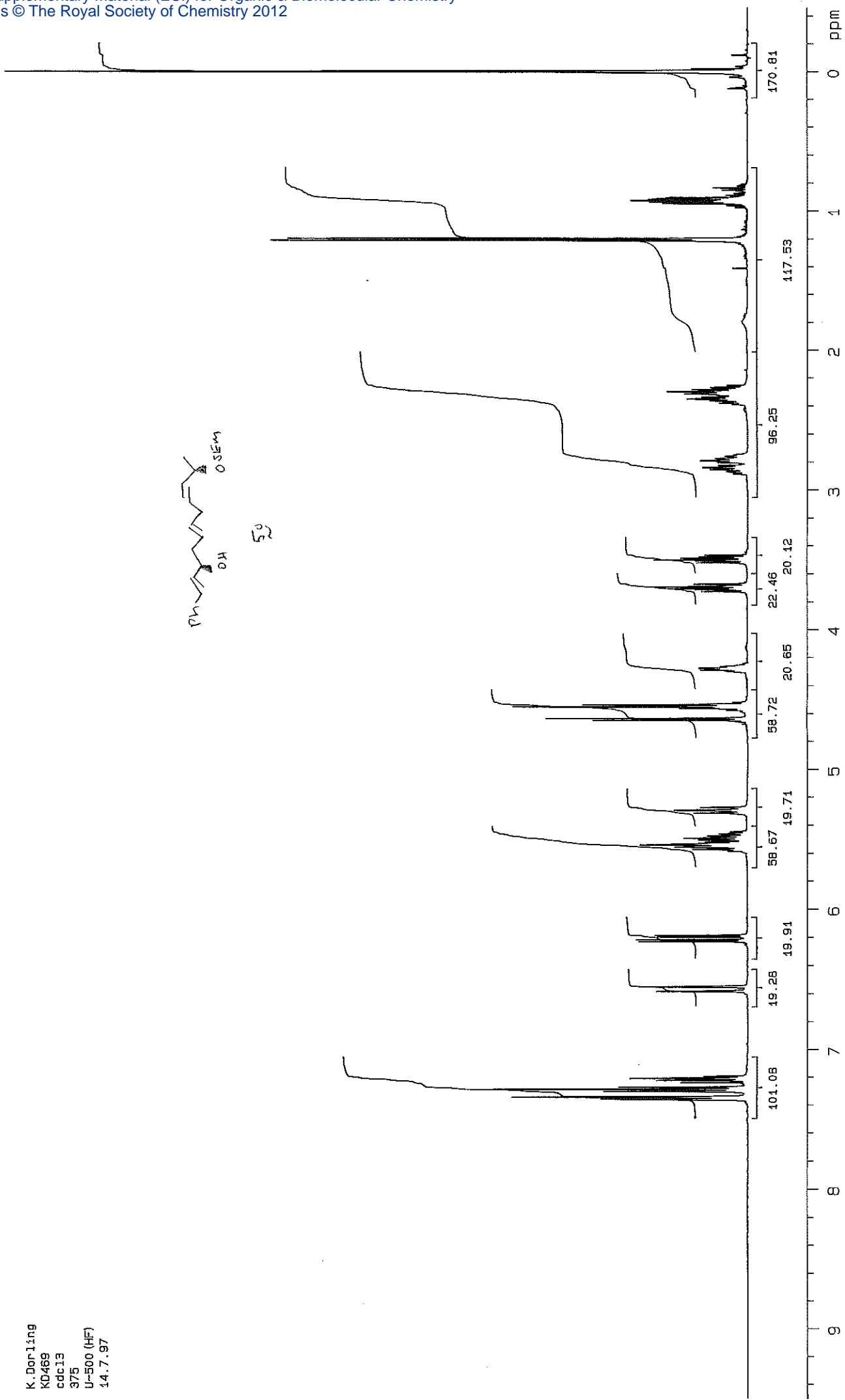
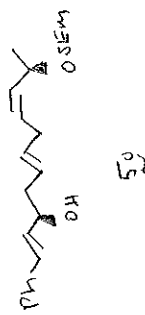
Solvent: cdc13
Ambient temperature
User: 1-15-87
File: 456
DATE Mar 31 98
INNOV-300 "athos"

PULSE SEQUENCE
Pulse 72.0 degrees
Acq. time 1.005 sec
Width 30007.5 Hz
48464 repetitions
JBSERVE C13, 125.6890854 MHz
JCOUPLE H1, 499.9545391 MHz

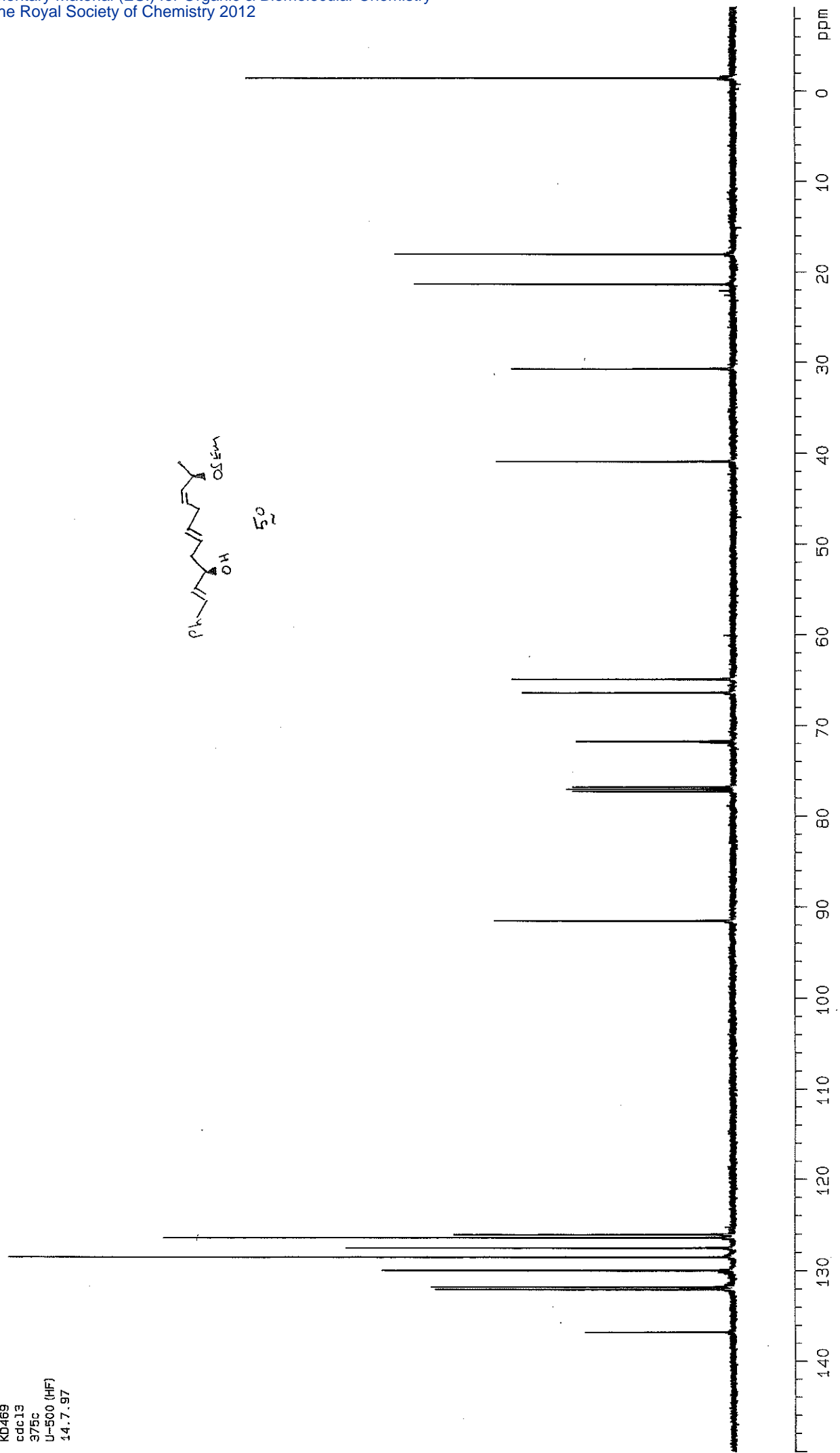
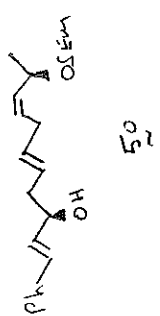
Power 44 dB
continuously on
WALTZ-15 modulated
DATA PROCESSING
Line broadening 3.0 Hz
Tone 65535
Total time 13.5 hours.



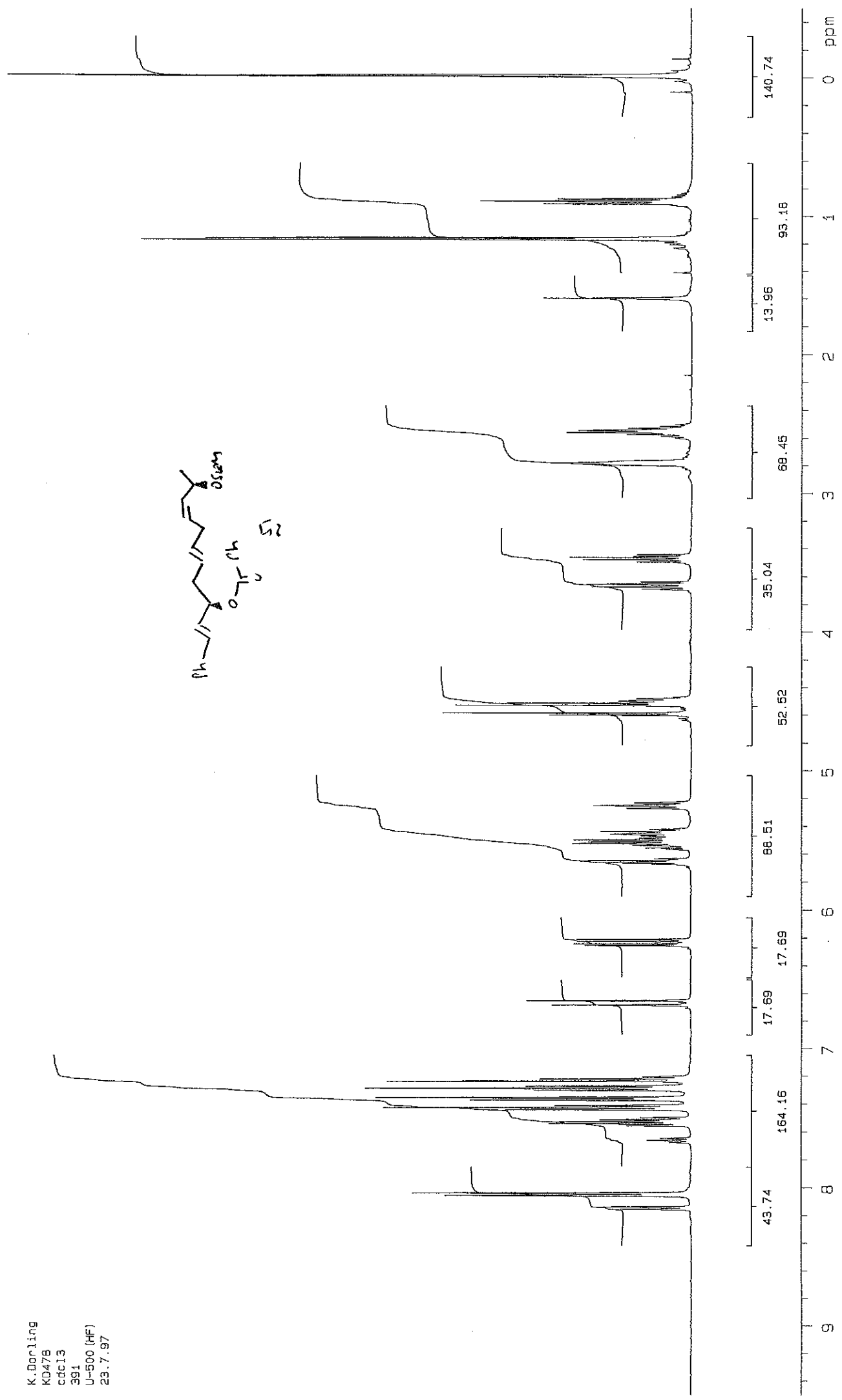
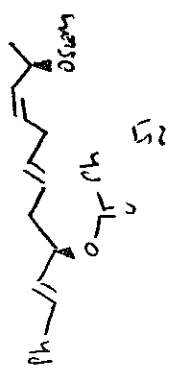
K. Dorling
KD469
cdc13
375
U-500 (HF)
14.7.97



K. Dorling
KD469
cdc13
375c
U-500 (HF)
14.7.97



K. Dorling
KD478
cdc13
391
U-500 (HF)
23.7.97



K. Dorling
KD478
cdc13
391c
U-500 (HF)
23.7.97

