

Supplementary Electronic Information - Compound Purity

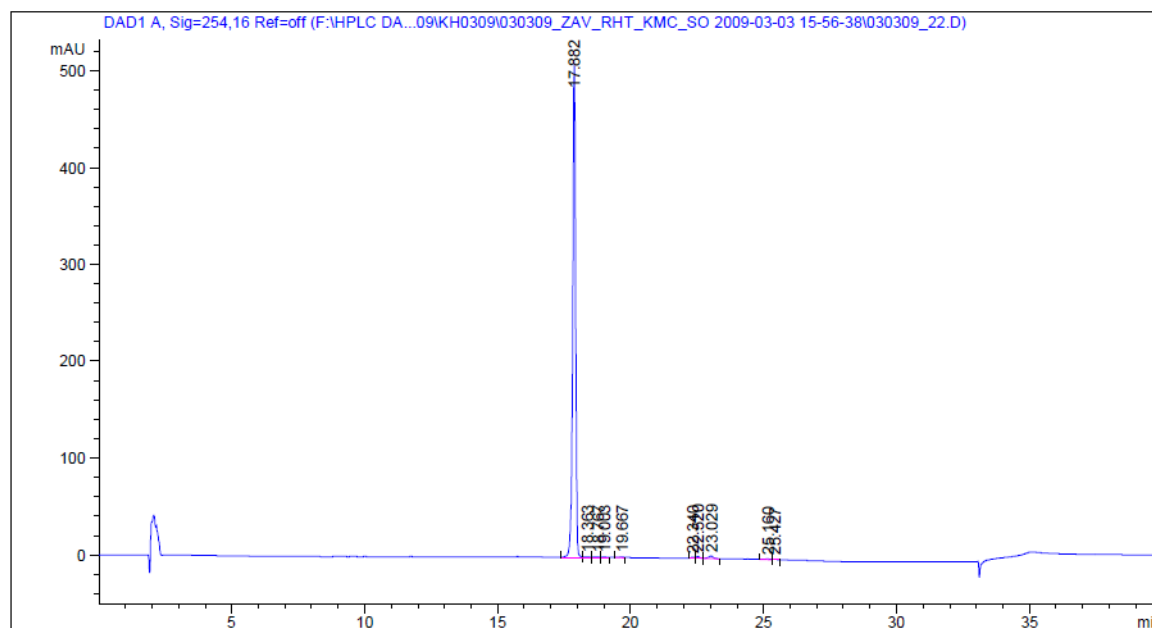
Compound 6 (racemic):

Data File F:\HPLC DATA 2009\KH0309\030309_ZAV_RHT_KMC_SO 2009-03-03 15-56-38\030309_22.D

Sample Name: KMC/01/55B

```
=====
Acq. Operator   : Karen Haggerty           Seq. Line :   22
Acq. Instrument : Instrument 1              Location  : Vial 62
Injection Date  : 3/4/2009 6:30:07 AM      Inj       :    1
                                           Inj Volume: 5.000 µl
Different Inj Volume from Sequence !      Actual Inj Volume : 10.000 µl
Acq. Method     : C:\CHEM32\1\DATA\KH0309\030309_ZAV_RHT_KMC_SO 2009-03-03 15-56-38\COL1-A2+
                                           B1-NO_REF.M
Last changed    : 3/2/2009 2:22:52 PM by Karen Haggerty
Analysis Method : F:\HPLC DATA 2009\KH0309\030309_ZAV_RHT_KMC_SO 2009-03-03 15-56-38\030309_
22.D\DA.M (COL1-A2+B1-NO_REF.M)
Last changed    : 7/10/2012 1:31:20 PM by Karen Haggerty
                 (modified after loading)
Method Info     : Waters XTerra RP18 5µm, 150 x 4.6mm
                 Scouting Gradient: 0.1% Formic Acid (aq)/MeCN, 1.0mL/min

Sample Info     : Waters XTerra RP18, 0.1% Formic Acid/MeCN
=====
```



Area Percent Report

```
=====
Sorted By      :      Signal
Multiplier:    :      1.0000
Dilution:      :      1.0000
Use Multiplier & Dilution Factor with ISTDs
=====
```

Data File F:\HPLC DATA 2009\KH0309\030309_ZAV_RHT_KMC_SO 2009-03-03 15-56-38\030309_22.D
Sample Name: KMC/01/55B

Signal 1: DAD1 A, Sig=254,16 Ref=off

Peak #	RetTime [min]	Type	Width [min]	Area [mAU*s]	Height [mAU]	Area %
1	17.882	MF	0.1292	3942.02588	508.70929	97.3402
2	18.363	FM	0.2250	7.82410	5.79520e-1	0.1932
3	18.767	MF	0.2801	7.50323	4.46479e-1	0.1853
4	19.003	FM	0.1542	6.55058	7.07867e-1	0.1618
5	19.667	MF	0.1543	8.14050	8.79140e-1	0.2010
6	22.340	MF	0.1563	9.69251	1.03321	0.2393
7	22.520	FM	0.1673	20.32342	2.02418	0.5018
8	23.029	VB	0.1771	33.09061	2.66081	0.8171
9	25.160	MF	0.2001	8.54992	7.12002e-1	0.2111
10	25.427	FM	0.1717	6.04023	5.86204e-1	0.1492

Totals : 4049.74097 518.33870

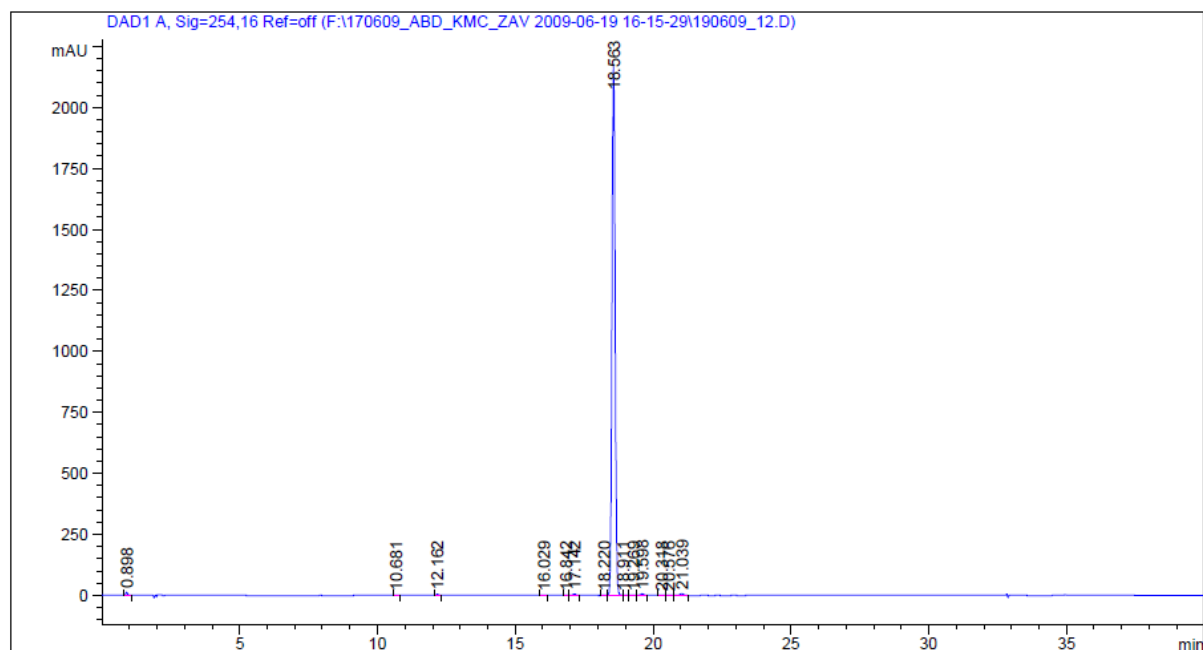
=====
*** End of Report ***

Compound 6 (-):

Data File F:\170609_ABD_KMC_ZAV 2009-06-19 16-15-29\190609_12.D

Sample Name: KMC-01-55.1

```
=====
Acq. Operator   : Karen Haggerty                Seq. Line :   12
Acq. Instrument : Instrument 1                  Location  : Vial 4
Injection Date  : 6/20/2009 12:12:22 AM         Inj       :    1
                                           Inj Volume: 5.000 µl
Acq. Method     : C:\CHEM32\1\DATA\KH0609\170609_ABD_KMC_ZAV 2009-06-19 16-15-29\COL1-A1+B1-
                  NO_REF.M
Last changed    : 4/22/2009 11:56:35 AM by Karen Haggerty
Analysis Method : F:\170609_ABD_KMC_ZAV 2009-06-19 16-15-29\190609_12.D\DA.M (COL1-A1+B1-NO_
                  REF.M)
Last changed    : 7/10/2012 12:37:42 PM by Karen Haggerty
                  (modified after loading)
Sample Info     : Waters XTerra RP18 0.1% Ammonia/MeCN
=====
```



Area Percent Report

```
=====
Sorted By      :      Signal
Multiplier:    :      1.0000
Dilution:      :      1.0000
Use Multiplier & Dilution Factor with ISTDs
=====
```

Signal 1: DAD1 A, Sig=254,16 Ref=off

Peak #	RetTime [min]	Type	Width [min]	Area [mAU*s]	Height [mAU]	Area %
1	0.898	BB	0.0750	59.75949	12.67729	0.3364
2	10.681	BB	0.0947	10.55932	1.69548	0.0594
3	12.162	BB	0.0931	26.56115	4.35778	0.1495

Data File F:\190609_ABD_KMC_2AV 2009-06-19 16-15-29\190609_12.D
Sample Name: KMC-01-55.1

Peak #	RetTime [min]	Type	Width [min]	Area [mAU*s]	Height [mAU]	Area %
4	16.029	BV	0.1248	10.72710	1.32057	0.0604
5	16.842	FM	0.1535	5.02392	5.45324e-1	0.0283
6	17.142	FM	0.1529	44.28368	4.82837	0.2493
7	18.220	MF	0.1345	14.33136	1.77547	0.0807
8	18.563	FM	0.1337	1.74143e4	2171.46973	98.0227
9	18.911	MF	0.0928	9.74756	1.26616	0.0549
10	19.269	MF	0.2169	13.50413	1.03780	0.0760
11	19.598	MF	0.1584	64.15023	6.74896	0.3611
12	20.318	MF	0.1754	8.57160	8.14614e-1	0.0482
13	20.576	MF	0.1720	12.51498	1.21248	0.0704
14	21.039	FM	0.1580	71.54507	7.54583	0.4027

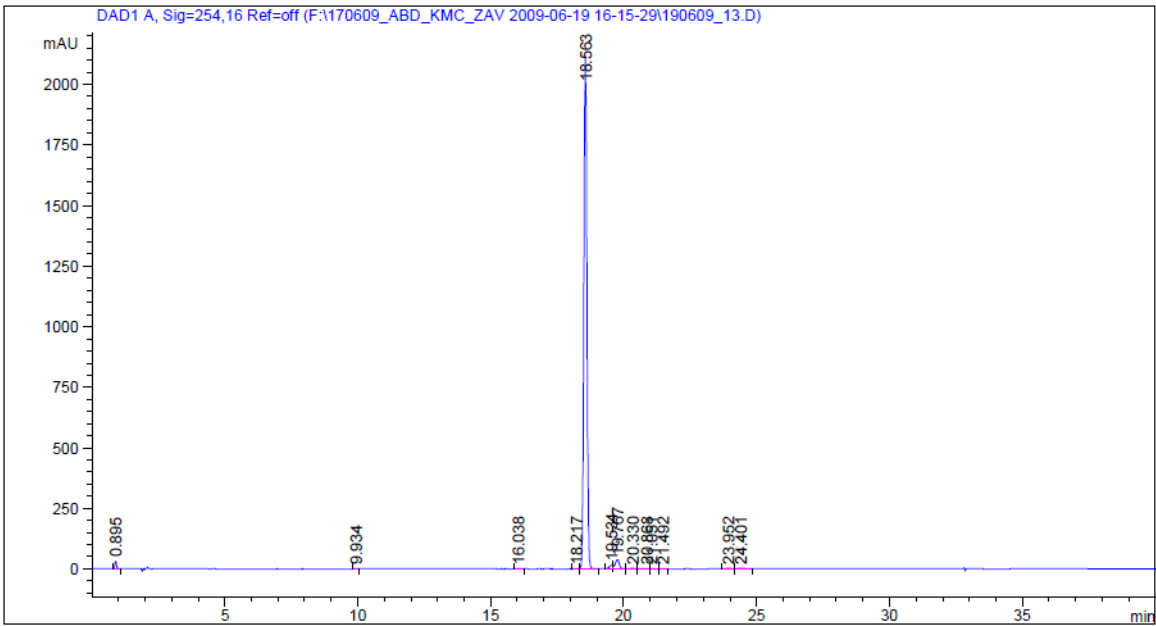
Totals : 1.77656e4 2217.29583

=====
*** End of Report ***

Compound 6 (+):

Data File F:\170609_ABD_KMC_ZAV 2009-06-19 16-15-29\190609_13.D
Sample Name: KMC-01-55.2

```
=====
Acq. Operator   : Karen Haggerty                      Seq. Line :   13
Acq. Instrument : Instrument 1                        Location  : Vial 5
Injection Date  : 6/20/2009 12:53:54 AM                Inj       :    1
                                                Inj Volume: 5.000 µl
Acq. Method     : C:\CHEM32\1\DATA\KH0609\170609_ABD_KMC_ZAV 2009-06-19 16-15-29\COL1-A1+B1-
                  NO_REF.M
Last changed    : 4/22/2009 11:56:35 AM by Karen Haggerty
Analysis Method : F:\170609_ABD_KMC_ZAV 2009-06-19 16-15-29\190609_13.D\DA.M (COL1-A1+B1-NO_
                  REF.M)
Last changed    : 7/10/2012 12:39:00 PM by Karen Haggerty
                  (modified after loading)
Sample Info     : Waters XTerra RP18 0.1% Ammonia/MeCN
=====
```



```
=====
                        Area Percent Report
=====

Sorted By      :      Signal
Multiplier:    :      1.0000
Dilution:      :      1.0000
Use Multiplier & Dilution Factor with ISTDs
```

Signal 1: DAD1 A, Sig=254,16 Ref=off

Peak #	RetTime [min]	Type	Width [min]	Area [mAU*s]	Height [mAU]	Area %
1	0.895	BB	0.0713	137.81415	30.18388	0.7706
2	9.934	BV	0.0798	6.27567	1.22361	0.0351
3	16.038	BB	0.1334	12.76134	1.49822	0.0714

Data File F:\170609_ABD_KMC_ZAV 2009-06-19 16-15-29\190609_13.D
Sample Name: KMC-01-55.2

Peak #	RetTime [min]	Type	Width [min]	Area [mAU*s]	Height [mAU]	Area %
4	18.217	FM	0.1381	18.05458	2.17968	0.1010
5	18.563	FM	0.1342	1.69873e4	2109.65234	94.9866
6	19.534	MF	0.1647	150.13290	15.19115	0.8395
7	19.767	FM	0.1817	412.44241	37.83819	2.3062
8	20.330	MF	0.1463	33.36186	3.80110	0.1865
9	20.868	MF	0.2079	23.07872	1.85040	0.1290
10	21.051	MF	0.1476	7.91707	8.94233e-1	0.0443
11	21.492	FM	0.1666	6.33046	6.33310e-1	0.0354
12	23.952	BV	0.1788	35.52439	3.07367	0.1986
13	24.401	VB	0.2228	52.89526	3.33879	0.2958

Totals : 1.78839e4 2211.35859

=====
*** End of Report ***

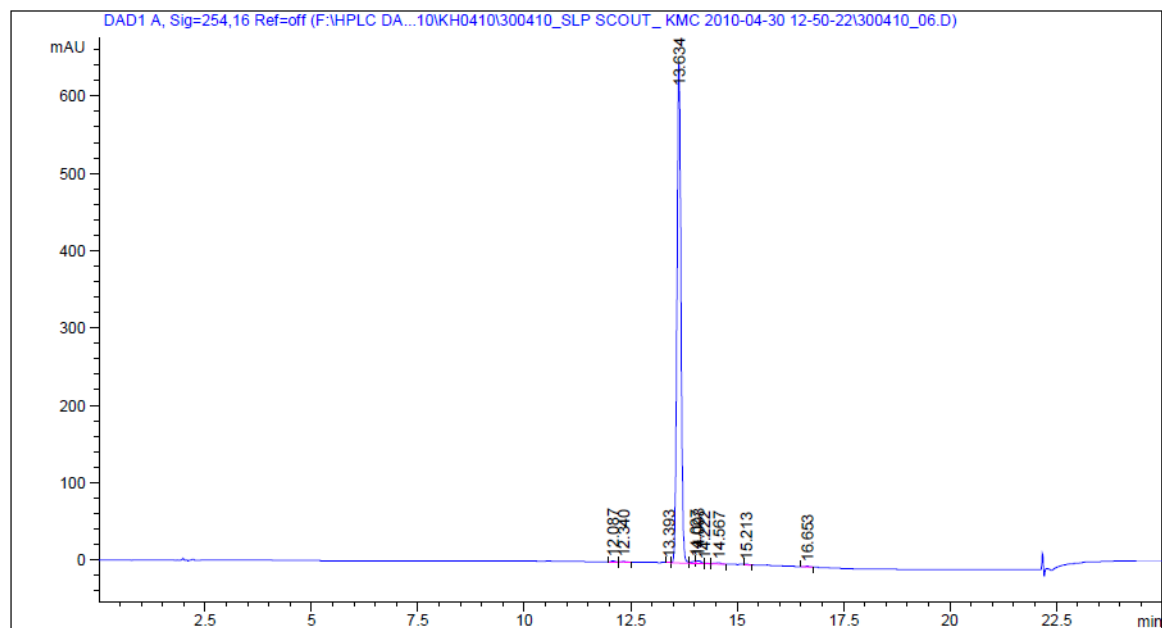
Compound 7 (racemic):

Data File F:\HPLC DATA 2010\KH0410\300410_SLP SCOUT_ KMC 2010-04-30 12-50-22\300410_06.D

Sample Name: KMC-386-116.3

```
=====
Acq. Operator   : Karen Haggerty                Seq. Line :    5
Acq. Instrument : Instrument 1                  Location  : Vial 12
Injection Date  : 4/30/2010 3:04:07 PM          Inj       :    1
                                                Inj Volume: 5.000 µl
Different Inj Volume from Sequence !    Actual Inj Volume : 10.000 µl
Acq. Method     : C:\CHEM32\1\DATA\KH0410\300410_SLP SCOUT_ KMC 2010-04-30 12-50-22\COL1-A2+
                                                B1-NO_REF_SHORT.M
Last changed    : 3/30/2010 9:34:02 AM by Karen Haggerty
Analysis Method : F:\HPLC DATA 2010\KH0410\300410_SLP SCOUT_ KMC 2010-04-30 12-50-22\300410_
06.D\DA.M (COL1-A2+B1-NO_REF_SHORT.M)
Last changed    : 7/10/2012 1:40:19 PM by Karen Haggerty
                  (modified after loading)
Method Info     : Waters XTerra RP18 5µm, 150 x 4.6mm

Sample Info     : Waters XTerra RP18 150 x 4.6mm, 0.1% Formic Acid (aq)/M
                  eCN
=====
```



Area Percent Report

```
=====
Sorted By      :      Signal
Multiplier:    :      1.0000
Dilution:      :      1.0000
Use Multiplier & Dilution Factor with ISTDs
=====
```

Data File F:\HPLC DATA 2010\KH0410\300410_SLP SCOUT_ KMC 2010-04-30 12-50-22\300410_06.D
Sample Name: KMC-386-116.3

Signal 1: DAD1 A, Sig=254,16 Ref=off

Peak #	RetTime [min]	Type	Width [min]	Area [mAU*s]	Height [mAU]	Area %
1	12.087	MF	0.1117	9.25640	1.38164	0.2139
2	12.340	FM	0.1380	6.72431	8.12047e-1	0.1554
3	13.393	FM	0.1041	6.10585	9.77466e-1	0.1411
4	13.634	FM	0.1086	4214.01611	646.77820	97.3922
5	14.027	MF	0.1072	19.40018	3.01649	0.4484
6	14.093	FM	0.1349	30.64703	3.78672	0.7083
7	14.222	FM	0.1168	6.48410	9.25445e-1	0.1499
8	14.567	FM	0.1917	20.34799	1.76888	0.4703
9	15.213	FM	0.1175	7.72732	1.09597	0.1786
10	16.653	MM	0.1279	6.14077	8.00191e-1	0.1419

Totals : 4326.85006 661.34304

=====
*** End of Report ***

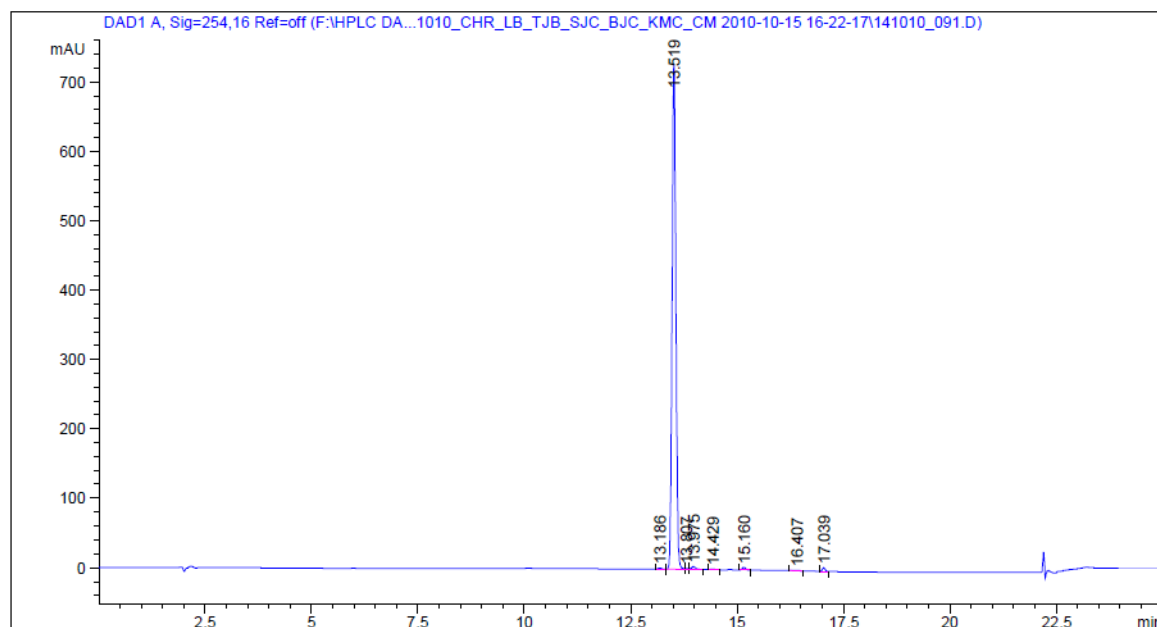
Compound 7(+):

Data File F:\HPLC DA...0\141010_CHR_LB_TJB_SJC_BJC_KMC_CM 2010-10-15 16-22-17\141010_091.D

Sample Name: KMC-386-116.2

```
=====
Acq. Operator   : Karen Haggerty           Seq. Line :   49
Acq. Instrument : Instrument 1             Location  : Vial 75
Injection Date  : 10/16/2010 10:31:24 AM   Inj       :    1
                                           Inj Volume: 5.000 µl
Different Inj Volume from Sequence !      Actual Inj Volume : 3.000 µl
Acq. Method     : C:\CHEM32\1\DATA\KH1010\141010_CHR_LB_TJB_SJC_BJC_KMC_CM 2010-10-15 16-22-
17\COL1-A2+B1-NO_REF_SHORT.M
Last changed    : 9/16/2010 11:21:01 AM by Karen Haggerty
Analysis Method : F:\HPLC DATA 2010\KH1010\141010_CHR_LB_TJB_SJC_BJC_KMC_CM 2010-10-15 16-22-
17\141010_091.D\DA.M (COL1-A2+B1-NO_REF_SHORT.M)
Last changed    : 7/10/2012 2:26:26 PM by Karen Haggerty
                 (modified after loading)
Method Info     : Waters XTerra RP18 5µm, 150 x 4.6mm
```

Sample Info : Waters XTerra RP18 0.1% Formic Acid (aq) / MeCN



Area Percent Report

```
=====
Sorted By      :      Signal
Multiplier:    :      1.0000
Dilution:      :      1.0000
Use Multiplier & Dilution Factor with ISTDs
```

Signal 1: DAD1 A, Sig=254,16 Ref=off

Peak #	RetTime [min]	Type	Width [min]	Area [mAU*s]	Height [mAU]	Area %
1	13.186	BV	0.0885	10.73960	1.88410	0.2340
2	13.519	MF	0.1027	4485.07178	727.52887	97.7288
3	13.807	FM	0.0922	6.39021	1.15576	0.1392
4	13.975	FM	0.1228	28.36777	3.84857	0.6181
5	14.429	BB	0.0970	6.94297	1.10905	0.1513
6	15.160	BB	0.0900	22.17365	3.80530	0.4832
7	16.407	MM	0.1194	5.74143	8.01265e-1	0.1251
8	17.039	BB	0.0706	23.87838	5.29658	0.5203

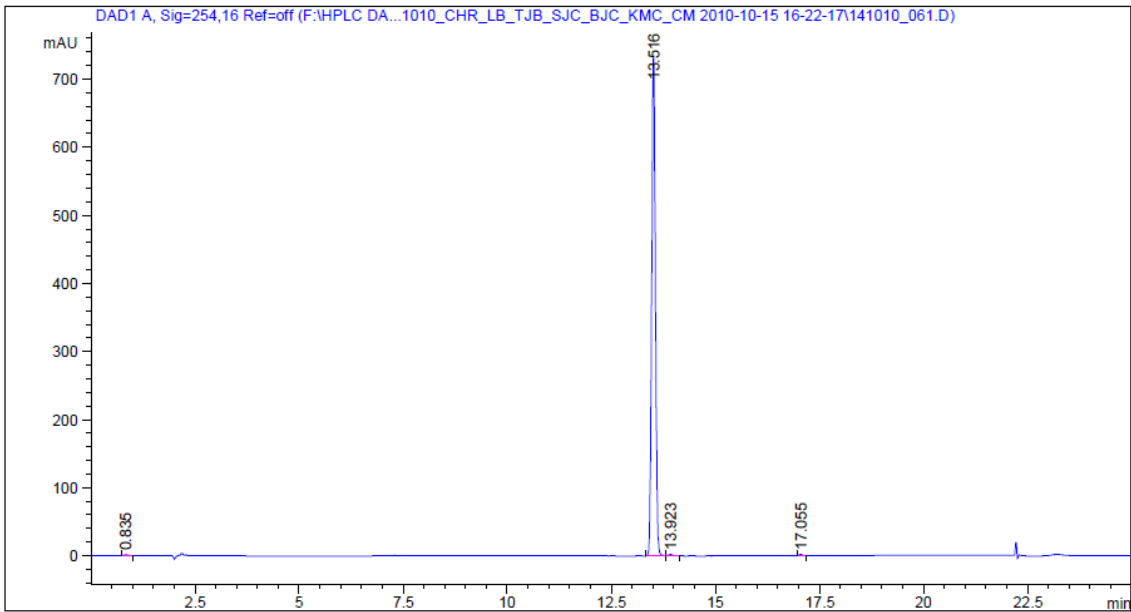
Totals : 4589.30579 745.42948

=====
*** End of Report ***

Compound 7(-):

Data File F:\HPLC DA...0\141010_CHR_LB_TJB_SJC_BJC_KMC_CM 2010-10-15 16-22-17\141010_061.D
Sample Name: KMC-386-116.1

```
=====
Acq. Operator   : Karen Haggerty           Seq. Line :   34
Acq. Instrument : Instrument 1              Location  : Vial 74
Injection Date  : 10/15/2010 9:15:31 PM    Inj       :    1
                                           Inj Volume: 5.000 µl
Acq. Method     : C:\CHEM32\1\DATA\KH1010\141010_CHR_LB_TJB_SJC_BJC_KMC_CM 2010-10-15 16-22-
17\COL1-A1+B1-NO_REF_SHORT.M
Last changed    : 9/15/2010 2:24:39 PM by Karen Haggerty
Analysis Method : F:\HPLC DATA 2010\KH1010\141010_CHR_LB_TJB_SJC_BJC_KMC_CM 2010-10-15 16-22-
17\141010_061.D\DA.M (COL1-A1+B1-NO_REF_SHORT.M)
Last changed    : 7/10/2012 2:27:50 PM by Karen Haggerty
                 (modified after loading)
Sample Info     : Waters XTerra RP18 0.1% Ammonia (aq)/ MeCN
=====
```



Area Percent Report

```
=====
Sorted By      :      Signal
Multiplier:    :      1.0000
Dilution:      :      1.0000
Use Multiplier & Dilution Factor with ISTDs
=====
```

Signal 1: DAD1 A, Sig=254,16 Ref=off

Peak #	RetTime [min]	Type	Width [min]	Area [mAU*s]	Height [mAU]	Area %
1	0.835	BB	0.0918	7.16976	1.07548	0.1558
2	13.516	MF	0.1037	4569.34717	734.28052	99.2616
3	13.923	MF	0.1365	17.60808	2.15031	0.3825

Data File F:\HPLC DA...0\141010_CHR_LB_TJB_SJC_BJC_KMC_CM 2010-10-15 16-22-17\141010_061.D
Sample Name: KMC-386-116.1

Peak #	RetTime [min]	Type	Width [min]	Area [mAU*s]	Height [mAU]	Area %
4	17.055	BB	0.0743	9.21538	1.90807	0.2002

Totals : 4603.34039 739.41437

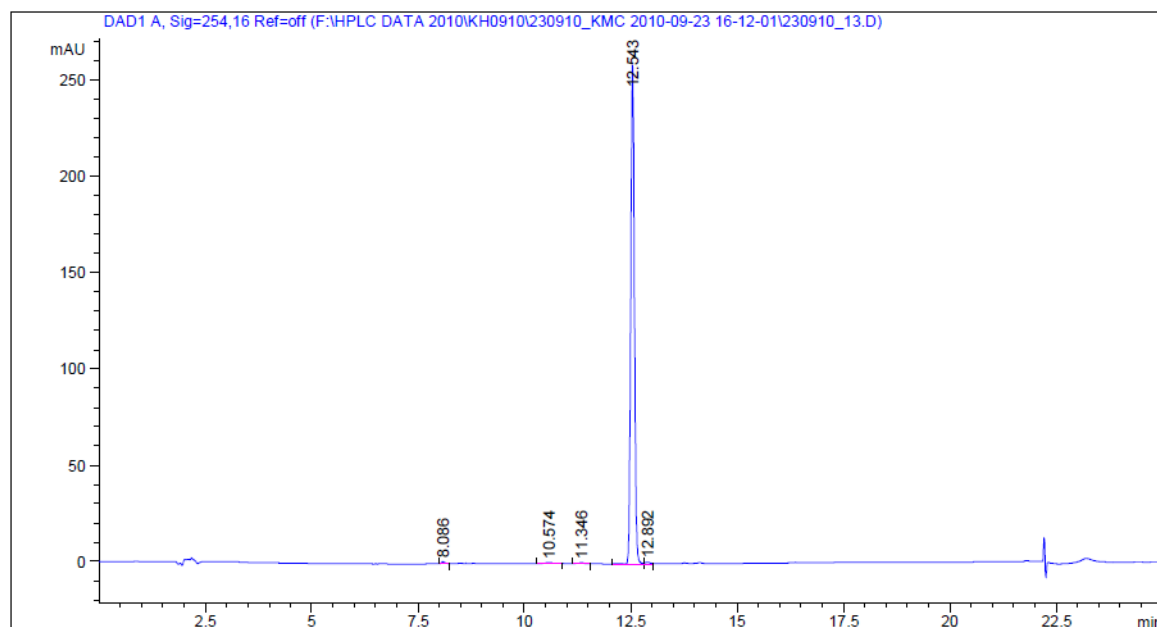
```
=====
*** End of Report ***
```

Compound 8 (racemic):

Data File F:\HPLC DATA 2010\KH0910\230910_KMC 2010-09-23 16-12-01\230910_13.D

Sample Name: KMC-386-238

```
=====
Acq. Operator   : Karen Haggerty                      Seq. Line :    8
Acq. Instrument : Instrument 1                        Location  : Vial 62
Injection Date  : 9/23/2010 9:28:48 PM                Inj       :    1
                                                Inj Volume: 5.000 µl
Different Inj Volume from Sequence !    Actual Inj Volume : 10.000 µl
Acq. Method     : C:\CHEM32\1\DATA\KH0910\230910_KMC 2010-09-23 16-12-01\COL1-A1+B1-NO_REF_
                                                SHORT.M
Last changed    : 9/15/2010 2:24:39 PM by Karen Haggerty
Analysis Method : F:\HPLC DATA 2010\KH0910\230910_KMC 2010-09-23 16-12-01\230910_13.D\DA.M (
                                                COL1-A1+B1-NO_REF_SHORT.M)
Last changed    : 7/10/2012 2:58:45 PM by Karen Haggerty
                                                (modified after loading)
Sample Info     : Waters XTerra RP18 0.1% Ammonia/MeCN
=====
```



Area Percent Report

```
=====
Sorted By      :      Signal
Multiplier:    :      1.0000
Dilution:      :      1.0000
Use Multiplier & Dilution Factor with ISTDs
=====
```

Signal 1: DAD1 A, Sig=254,16 Ref=off

Peak #	RetTime [min]	Type	Width [min]	Area [mAU*s]	Height [mAU]	Area %
1	8.086	MF	0.1036	6.15895	9.91064e-1	0.3876
2	10.574	MF	0.3555	10.84812	5.08599e-1	0.6826

Data File F:\HPLC DATA 2010\KH0910\230910_KMC 2010-09-23 16-12-01\230910_13.D
Sample Name: KMC-386-238

Peak #	RetTime [min]	Type	Width [min]	Area [mAU*s]	Height [mAU]	Area %
3	11.346	MF	0.1957	6.93036	5.90120e-1	0.4361
4	12.543	MF	0.0999	1557.37878	259.81110	98.0004
5	12.892	MF	0.1357	7.83997	9.62881e-1	0.4933
Totals :				1589.15619	262.86376	

=====
*** End of Report ***

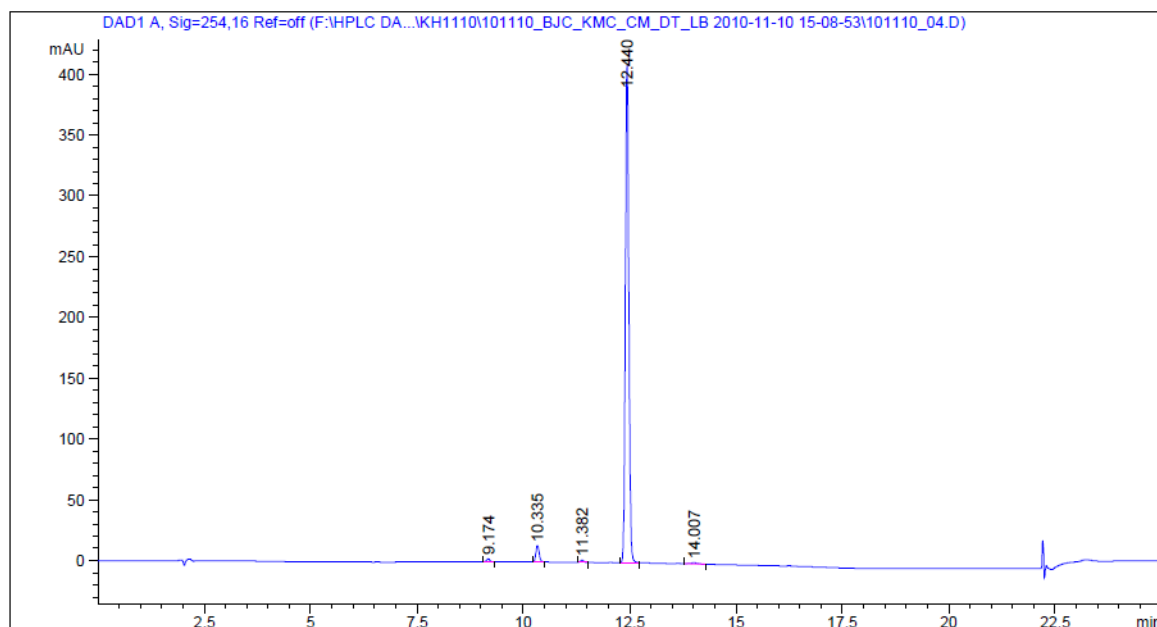
Compound 8 (-):

Data File F:\HPLC DATA 2010\KH1110\101110_BJC_KMC_CM_DT_LB 2010-11-10 15-08-53\101110_04.D

Sample Name: KMC-386-240.1

```
=====
Acq. Operator   : Karen Haggerty                Seq. Line :    4
Acq. Instrument : Instrument 1                  Location  : Vial 3
Injection Date  : 11/10/2010 4:28:06 PM          Inj       :    1
                                                Inj Volume: 5.000 µl
Different Inj Volume from Sequence !    Actual Inj Volume : 1.000 µl
Acq. Method     : C:\CHEM32\1\DATA\KH1110\101110_BJC_KMC_CM_DT_LB 2010-11-10 15-08-53\COL1-
A2+B1-NO_REF_SHORT.M
Last changed    : 9/16/2010 11:21:01 AM by Karen Haggerty
Analysis Method : F:\HPLC DATA 2010\KH1110\101110_BJC_KMC_CM_DT_LB 2010-11-10 15-08-53\
101110_04.D\DA.M (COL1-A2+B1-NO_REF_SHORT.M)
Last changed    : 7/10/2012 2:49:03 PM by Karen Haggerty
                (modified after loading)
Method Info     : Waters XTerra RP18 5µm, 150 x 4.6mm
=====
```

Sample Info : Waters XTerra RP18 0.1% Formic Acid (aq) / MeCN



Area Percent Report

```
=====
Sorted By      :      Signal
Multiplier:    :      1.0000
Dilution:      :      1.0000
Use Multiplier & Dilution Factor with ISTDs
=====
```

Data File F:\HPLC DATA 2010\KH1110\101110_BJC_KMC_CM_DT_LB 2010-11-10 15-08-53\101110_04.D
Sample Name: KMC-386-240.1

Signal 1: DAD1 A, Sig=254,16 Ref=off

Peak #	RetTime [min]	Type	Width [min]	Area [mAU*s]	Height [mAU]	Area %
1	9.174	BB	0.0838	12.88767	2.35633	0.5252
2	10.335	BB	0.0828	72.77117	13.52690	2.9655
3	11.382	BB	0.0894	10.93016	1.89234	0.4454
4	12.440	BB	0.0906	2344.70728	410.58762	95.5502
5	14.007	BB	0.1488	12.60383	1.14170	0.5136

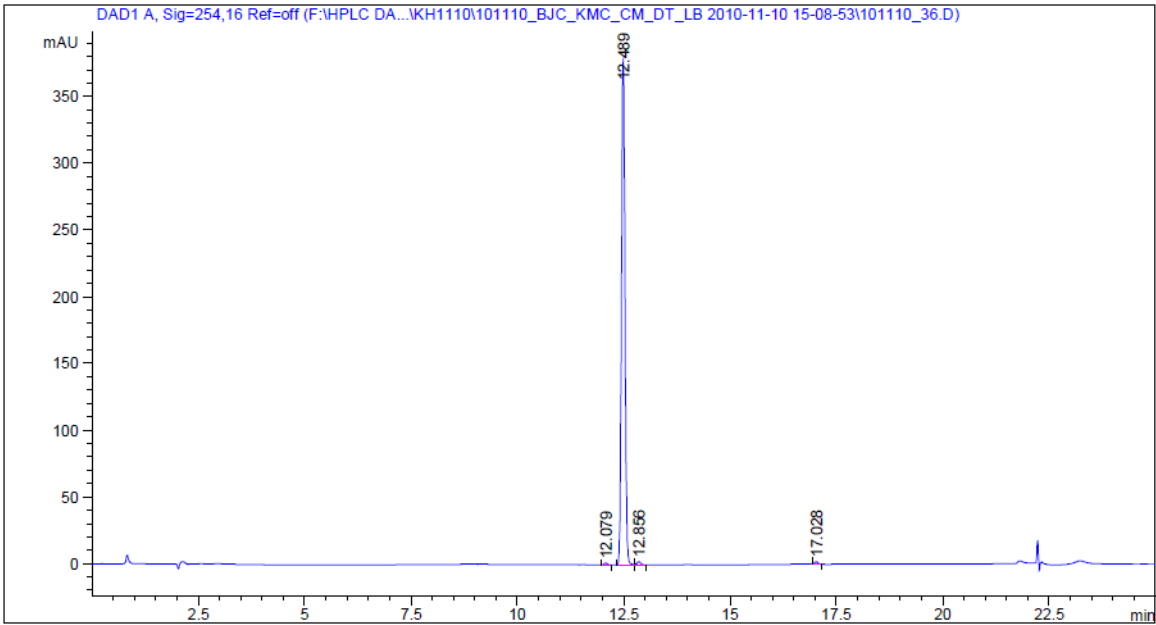
Totals : 2453.90011 429.50489

=====
*** End of Report ***

Compound 8 (+):

Data File F:\HPLC DATA 2010\KH1110\101110_BJC_KMC_CM_DT_LB 2010-11-10 15-08-53\101110_36.D
Sample Name: KMC-386-240.2

```
=====
Acq. Operator   : Karen Haggerty                      Seq. Line :   21
Acq. Instrument : Instrument 1                        Location  : Vial 4
Injection Date  : 11/11/2010 6:37:00 AM              Inj       :    1
                                                    Inj Volume: 5.000 µl
Different Inj Volume from Sequence !    Actual Inj Volume : 1.000 µl
Acq. Method     : C:\CHEM32\1\DATA\KH1110\101110_BJC_KMC_CM_DT_LB 2010-11-10 15-08-53\COL1-
                  A1+B1-NO_REF_SHORT.M
Last changed    : 9/15/2010 2:24:39 PM by Karen Haggerty
Analysis Method : F:\HPLC DATA 2010\KH1110\101110_BJC_KMC_CM_DT_LB 2010-11-10 15-08-53\
                  101110_36.D\DA.M (COL1-A1+B1-NO_REF_SHORT.M)
Last changed    : 7/10/2012 2:50:33 PM by Karen Haggerty
                  (modified after loading)
Sample Info     : Waters XTerra RP18 0.1% Ammonia (aq) / MeCN
=====
```



```
=====
                        Area Percent Report
=====
Sorted By      :      Signal
Multiplier:    :      1.0000
Dilution:      :      1.0000
Use Multiplier & Dilution Factor with ISTDs
```

Signal 1: DAD1 A, Sig=254,16 Ref=off

Peak #	RetTime [min]	Type	Width [min]	Area [mAU*s]	Height [mAU]	Area %
1	12.079	BB	0.0784	6.34116	1.26646	0.2893
2	12.489	BB	0.0884	2160.08667	379.69702	98.5636

Data File F:\HPLC DATA 2010\KH1110\101110_BJC_KMC_CM_DT_LB 2010-11-10 15-08-53\101110_36.D
Sample Name: KMC-386-240.2

Peak #	RetTime [min]	Type	Width [min]	Area [mAU*s]	Height [mAU]	Area %
3	12.856	BB	0.0952	15.35242	2.44724	0.7005
4	17.028	BB	0.0741	9.78715	2.03613	0.4466
Totals :				2191.56740	385.44684	

=====
*** End of Report ***