

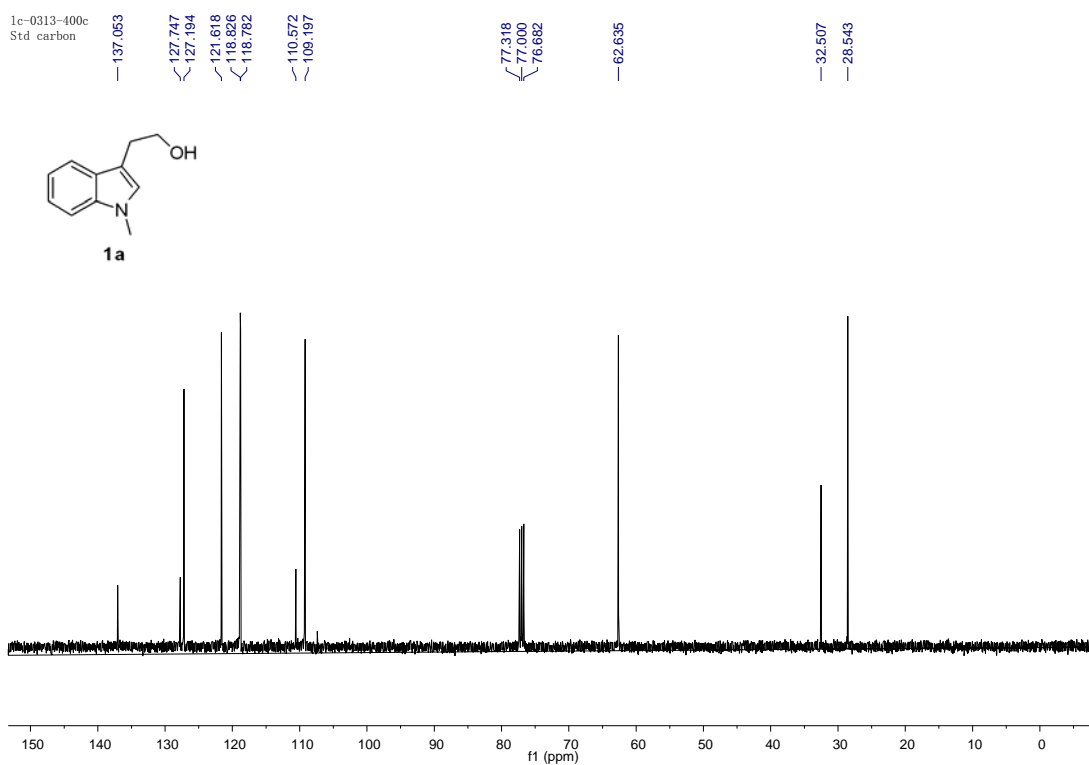
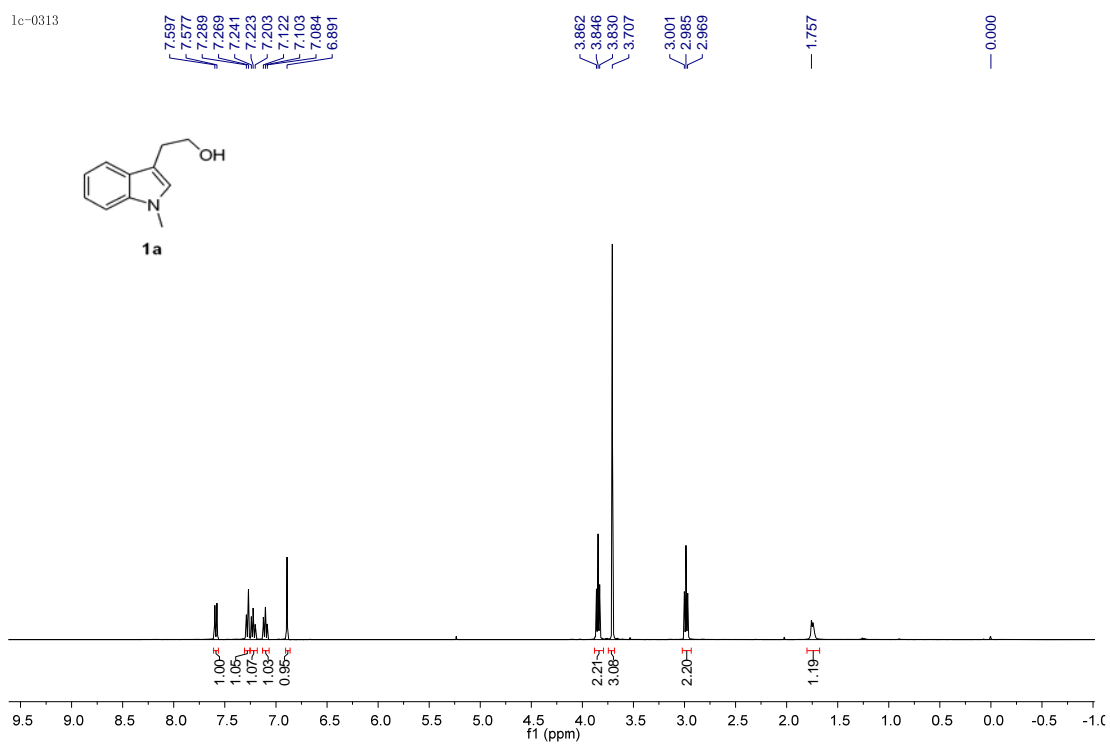
*Supporting Information for*

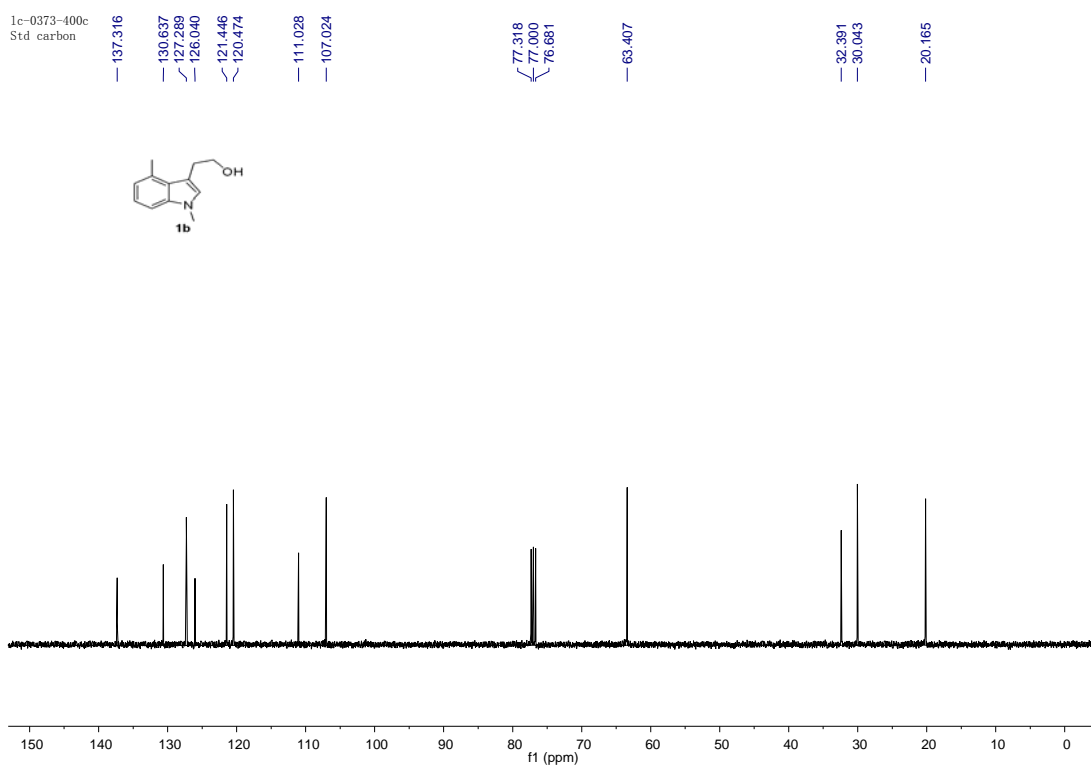
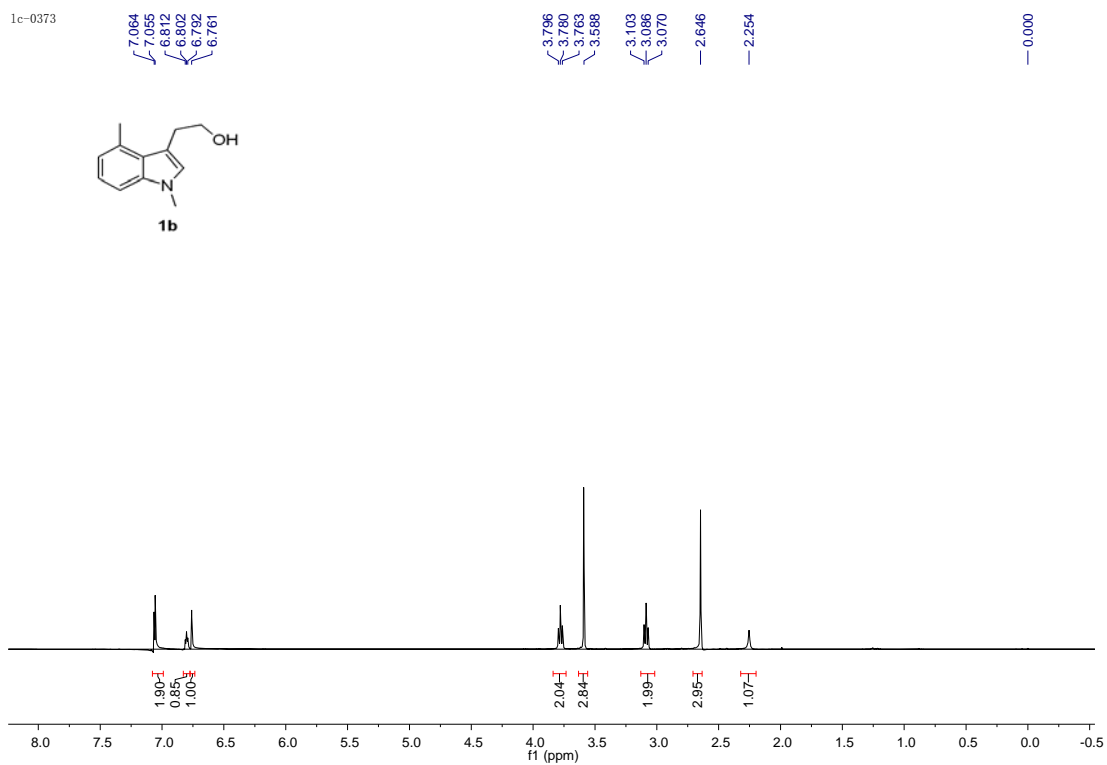
**Cascade Dearomatization of *N*-Substituted Tryptophols *via* Lewis  
Acid-Catalyzed Michael Reaction**

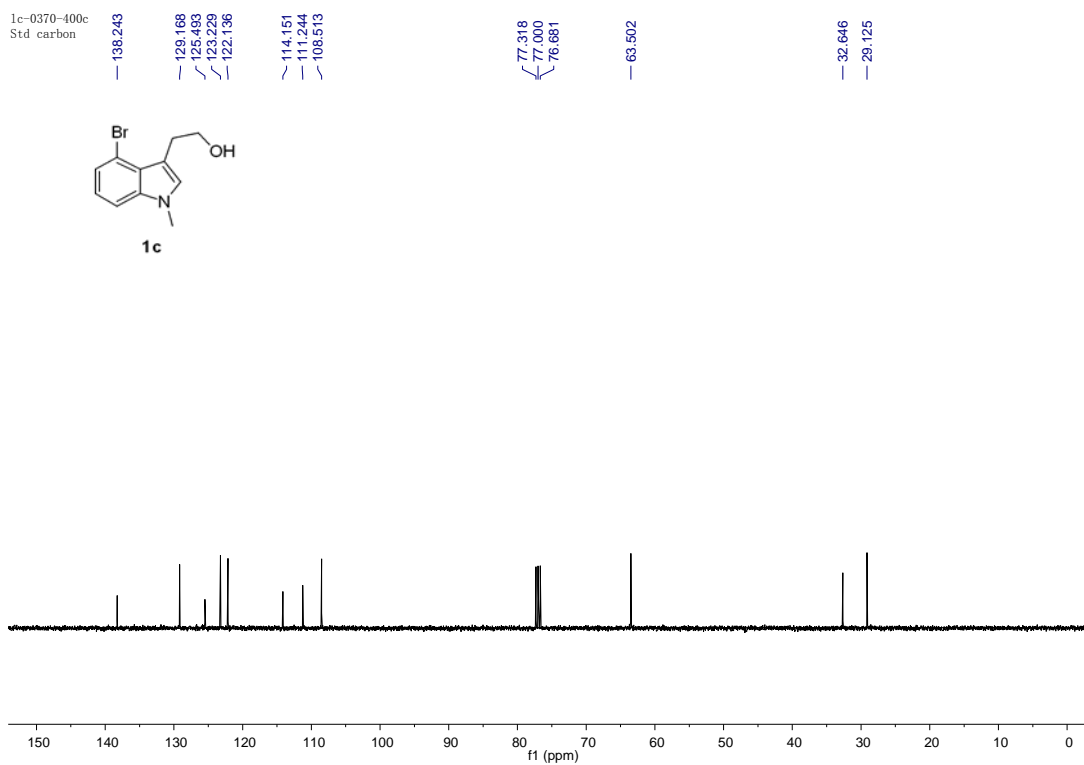
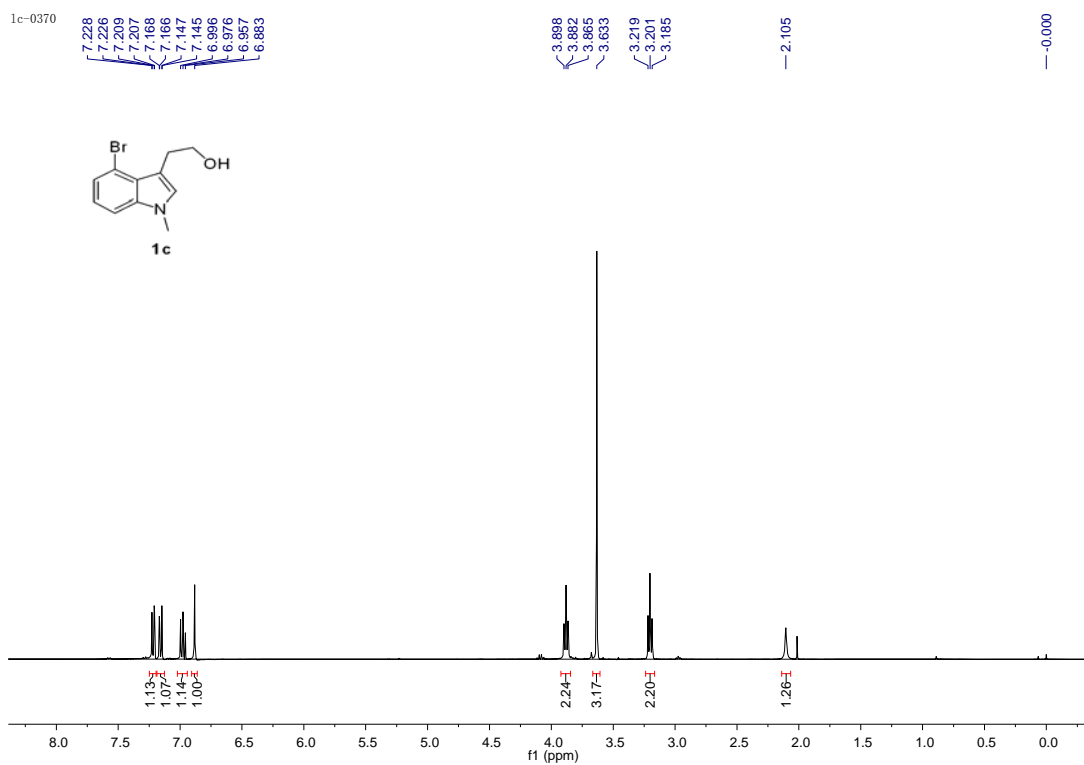
Chuan Liu, Wei Zhang, Li-Xin Dai, and Shu-Li You\*

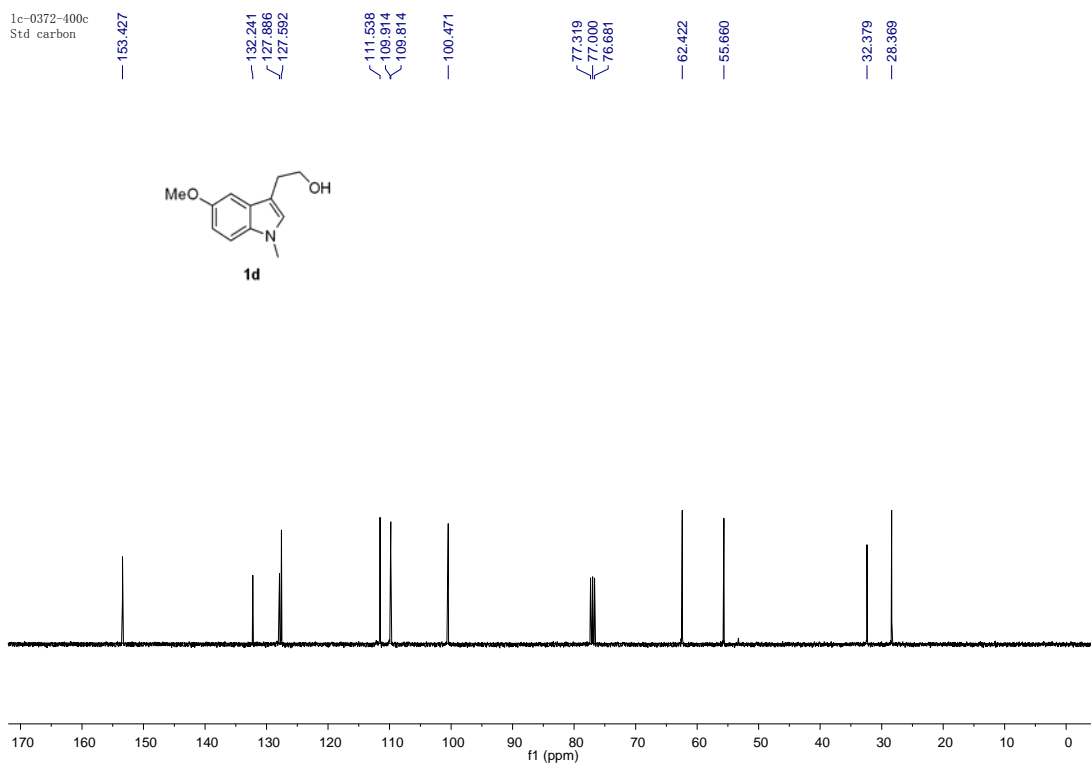
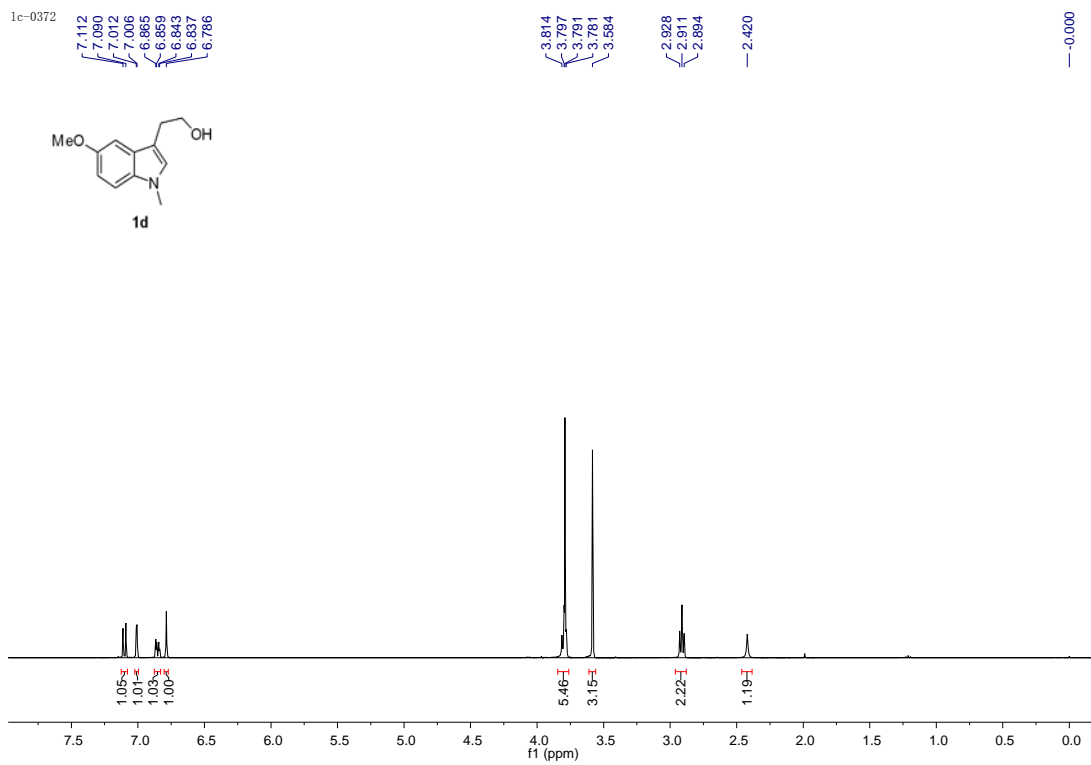
State Key Laboratory of Organometallic Chemistry  
Shanghai Institute of Organic Chemistry, Chinese Academy of Sciences  
345 Lingling Lu, Shanghai 200032, China

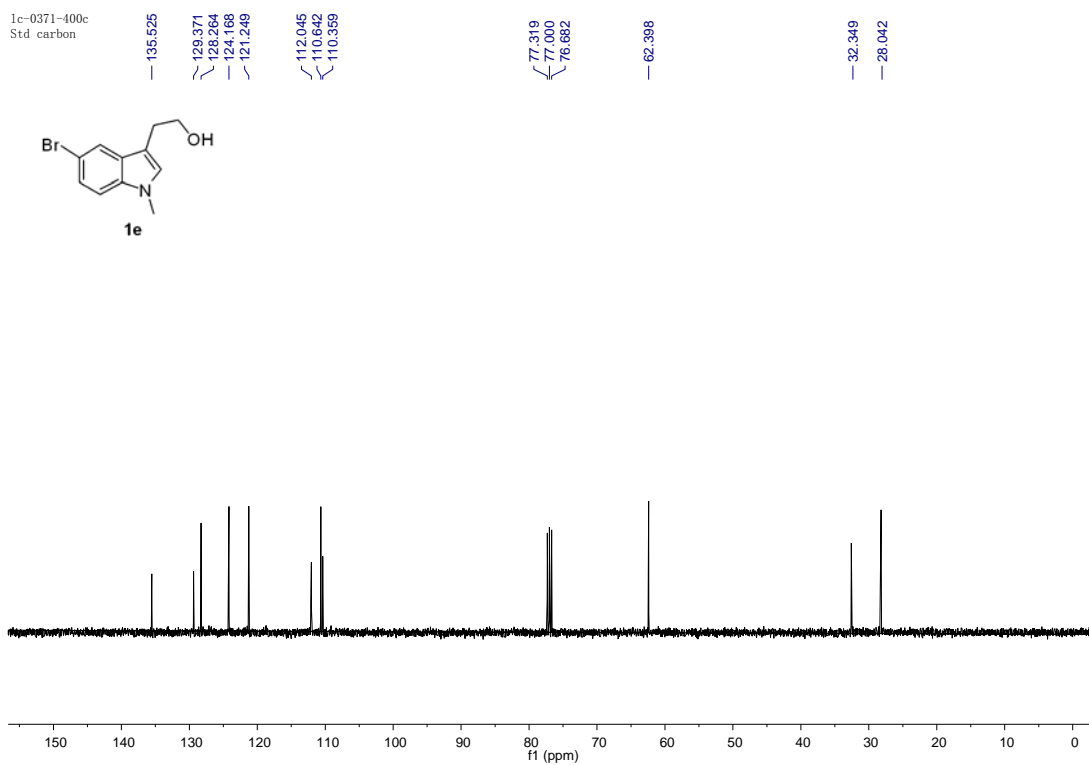
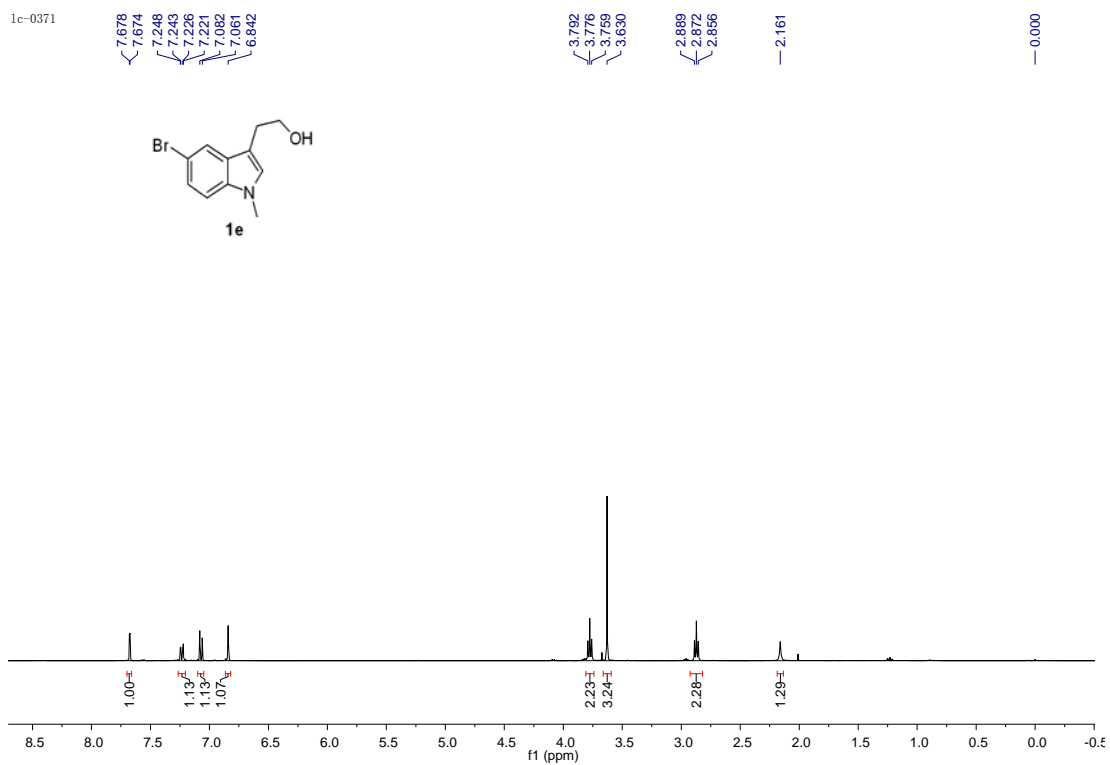
E-mail: [slyou@sioc.ac.cn](mailto:slyou@sioc.ac.cn)

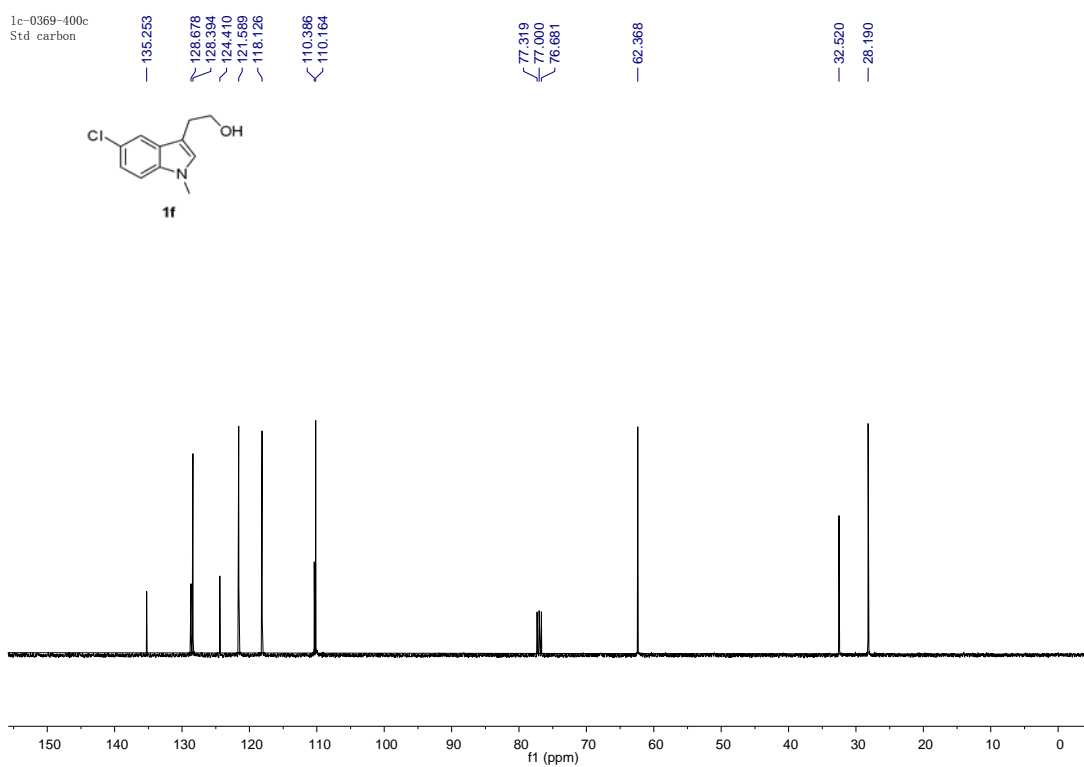
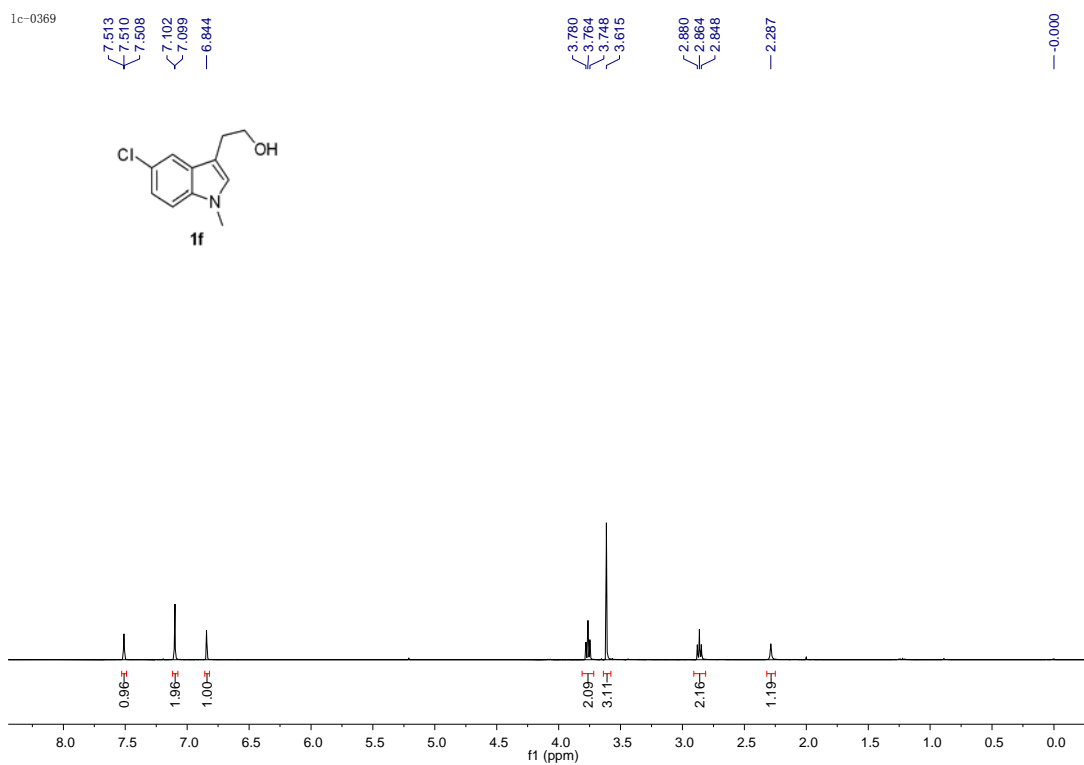


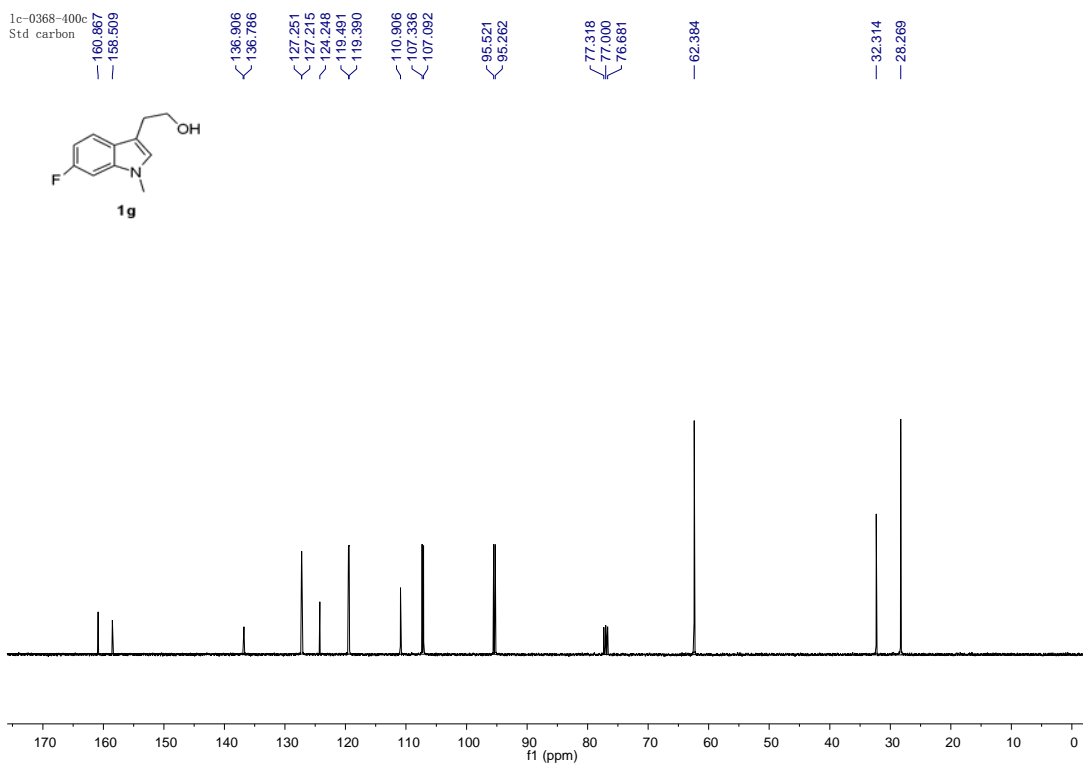
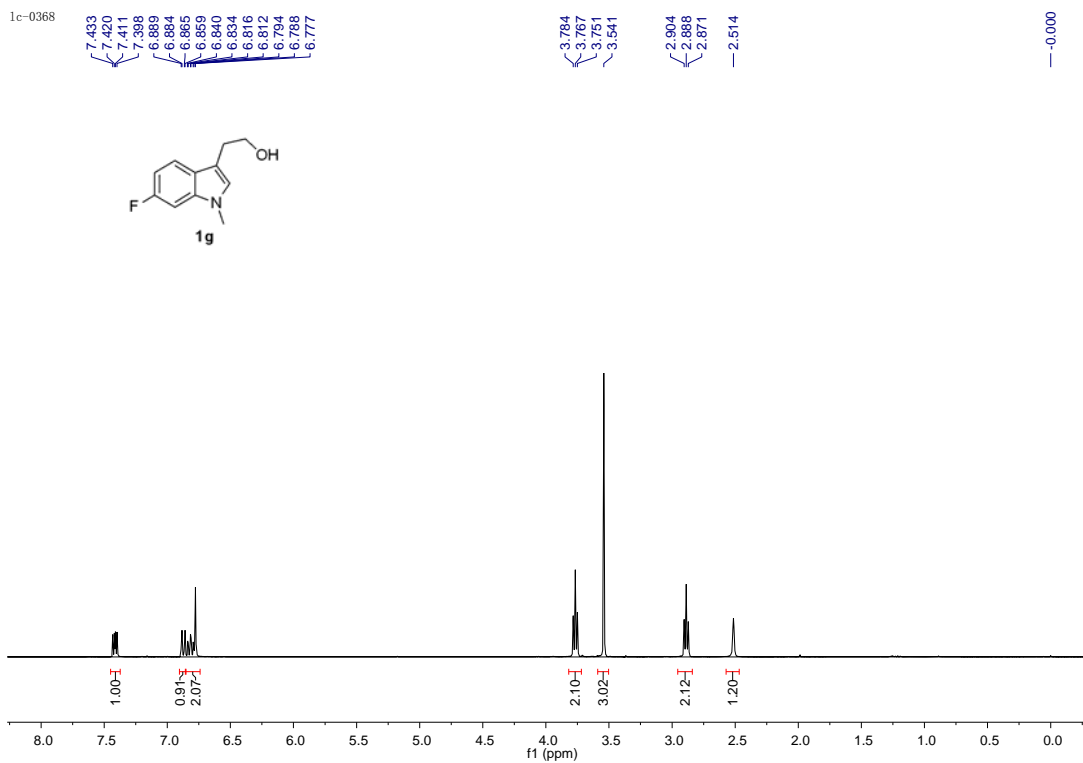




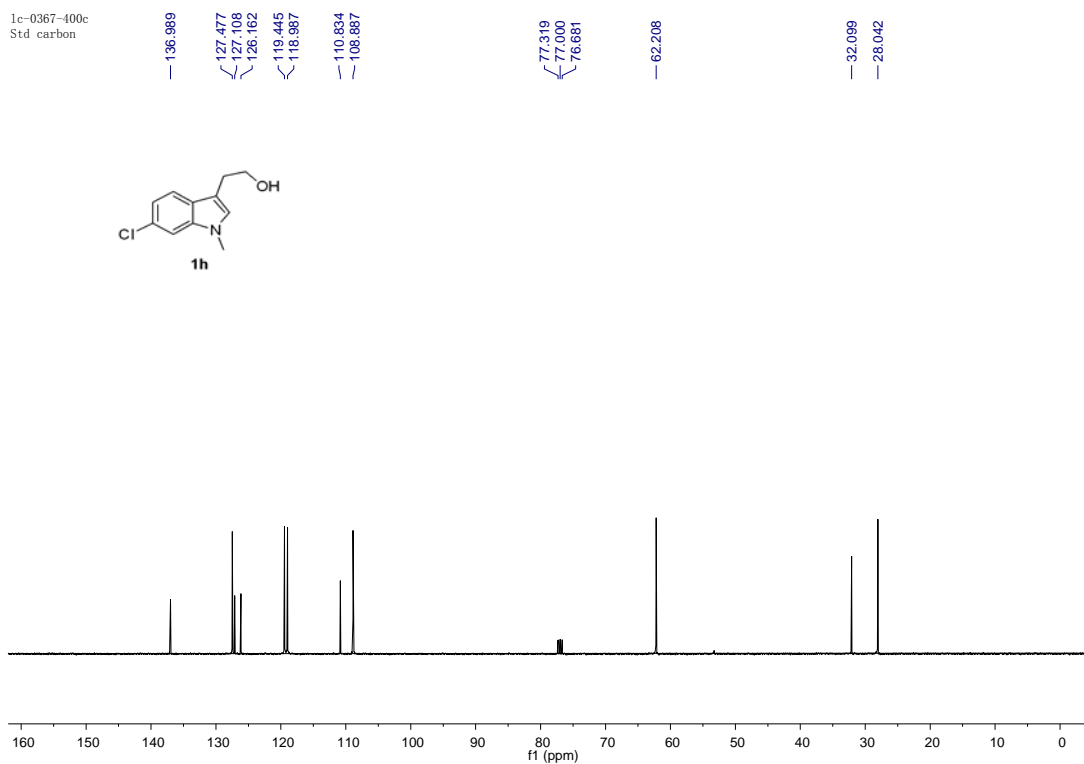
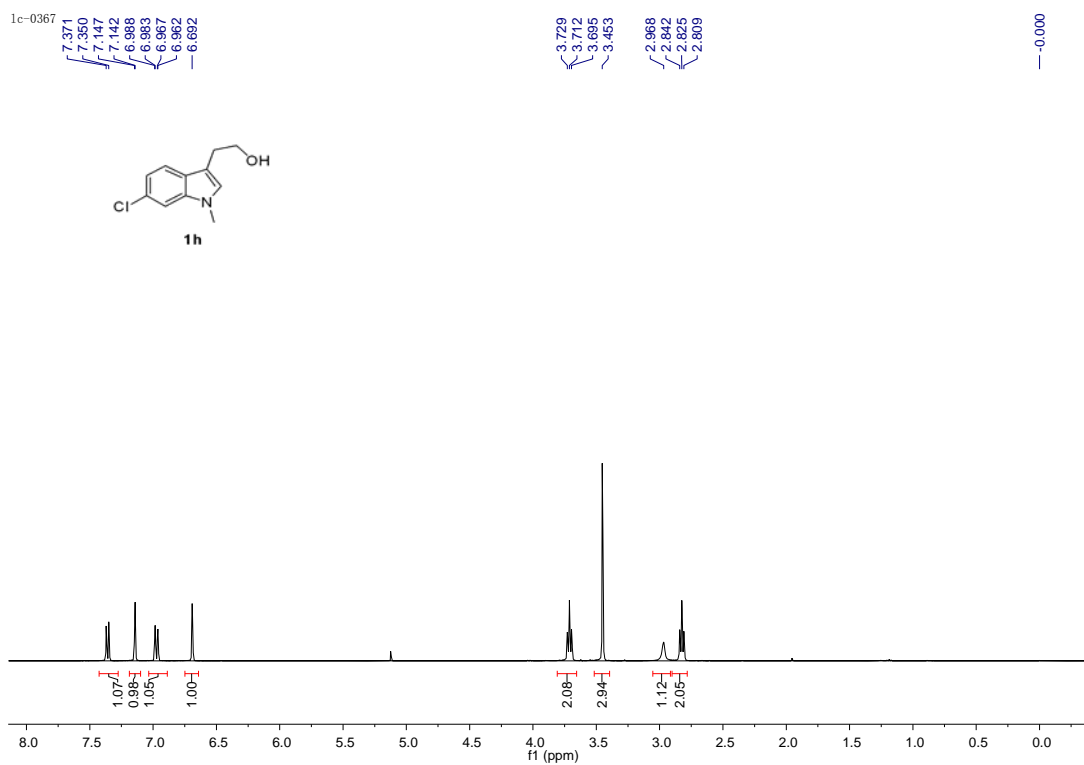


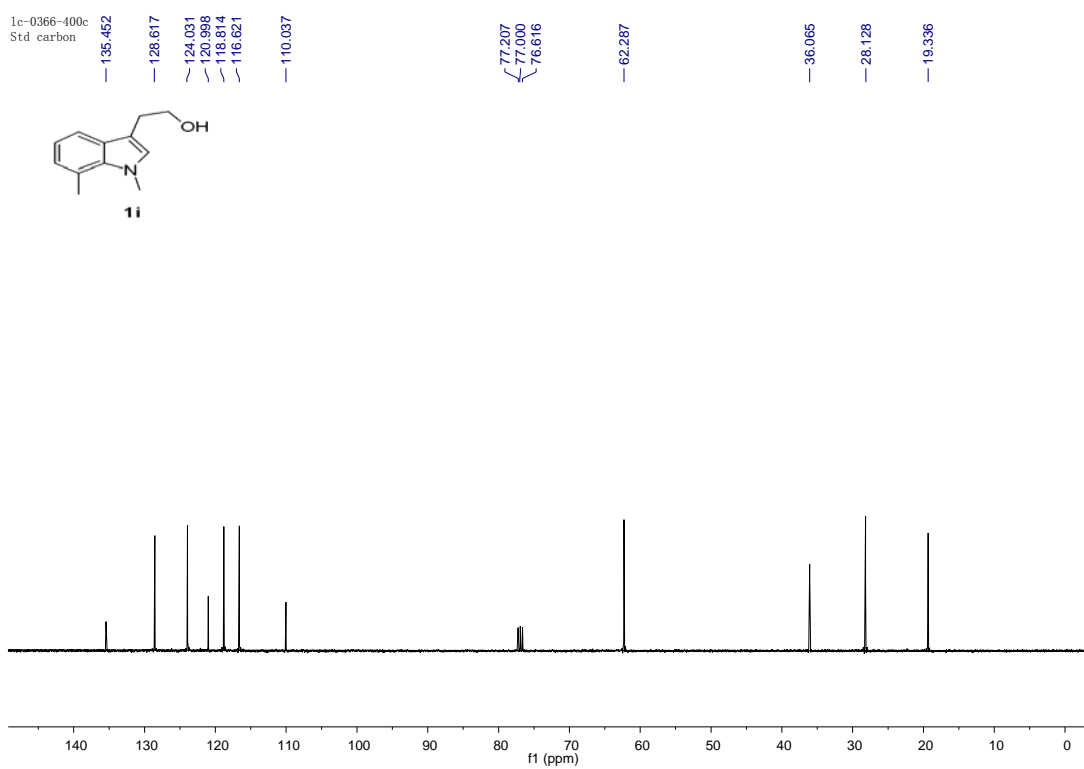
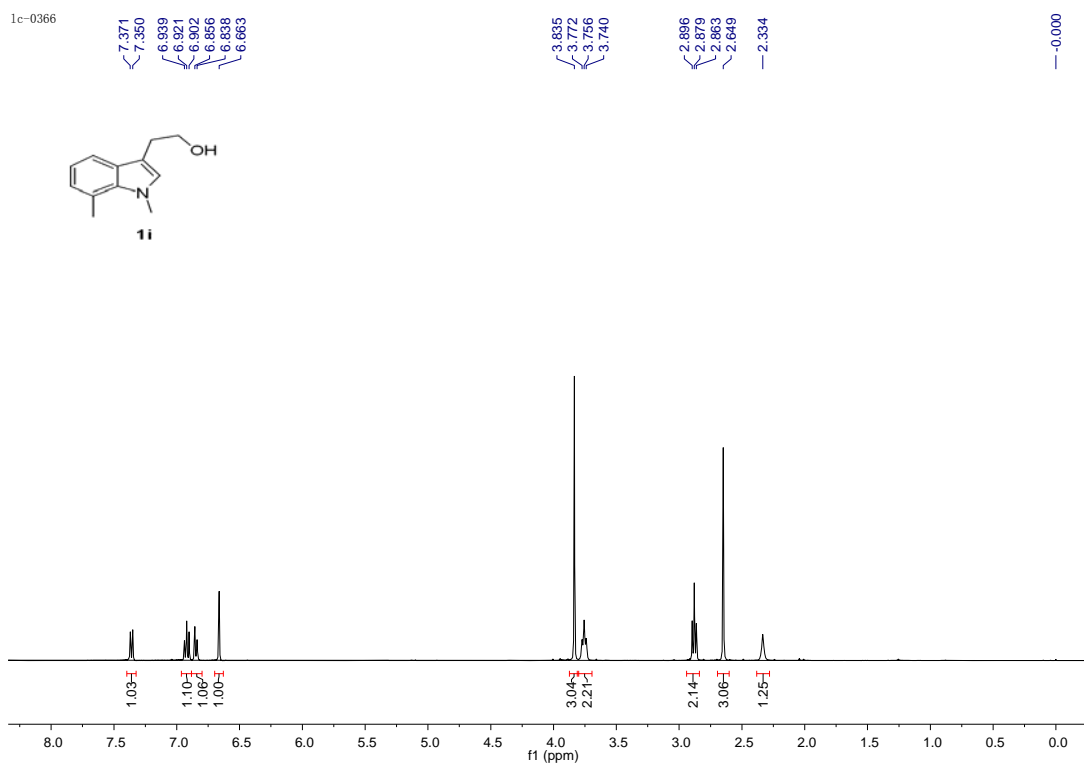




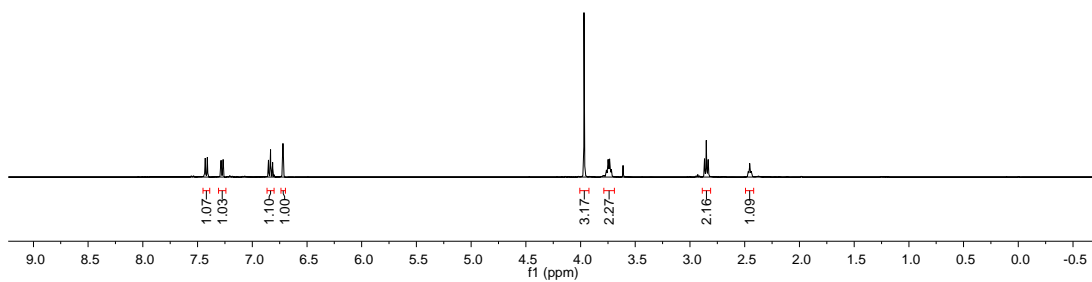
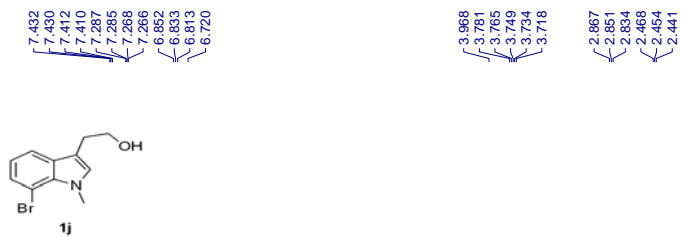




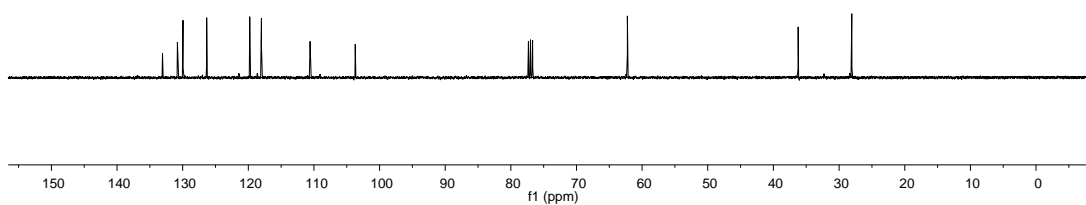
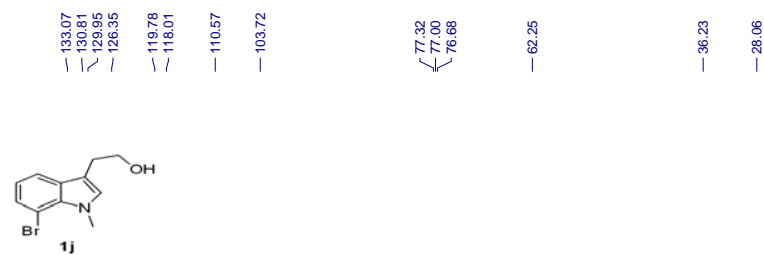


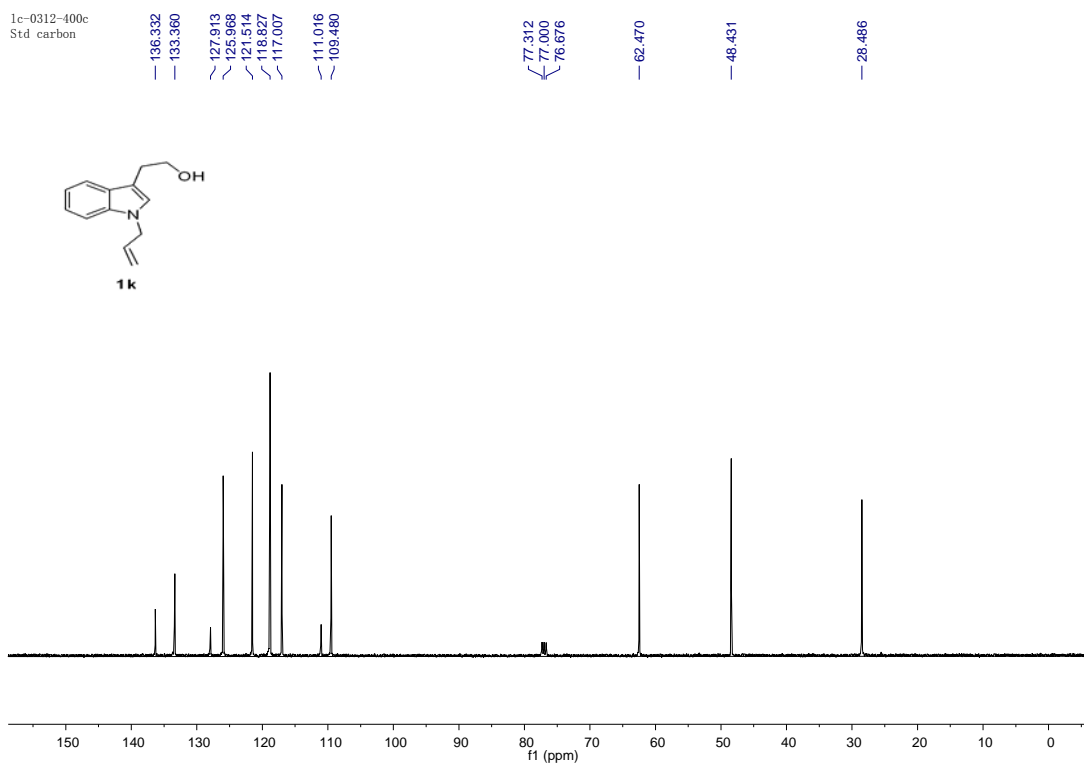
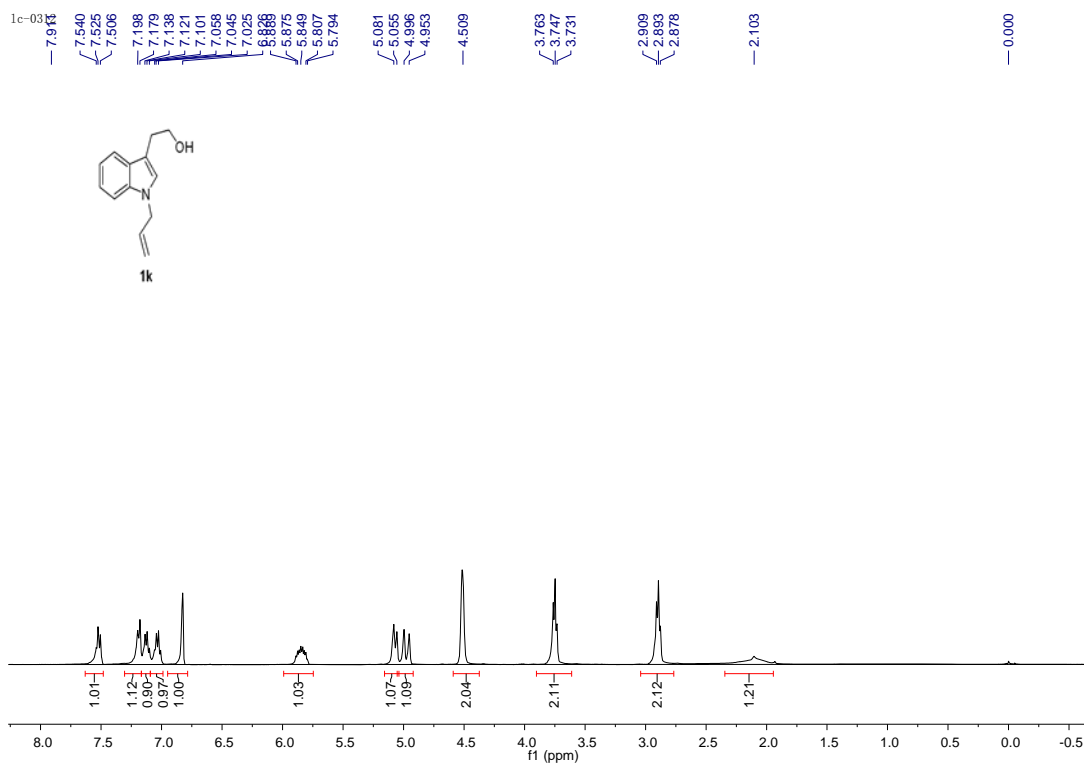


1c-0365

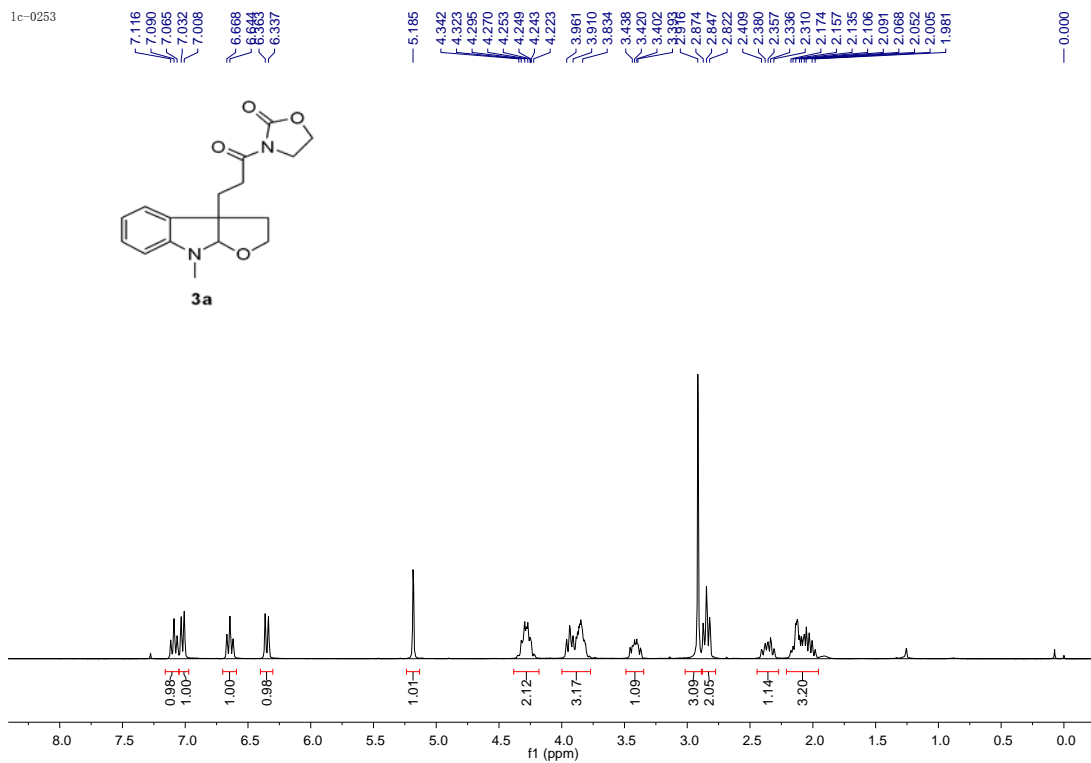
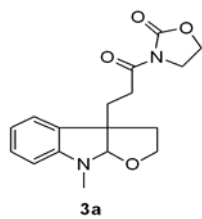


1c-0365-400c  
Std carbon

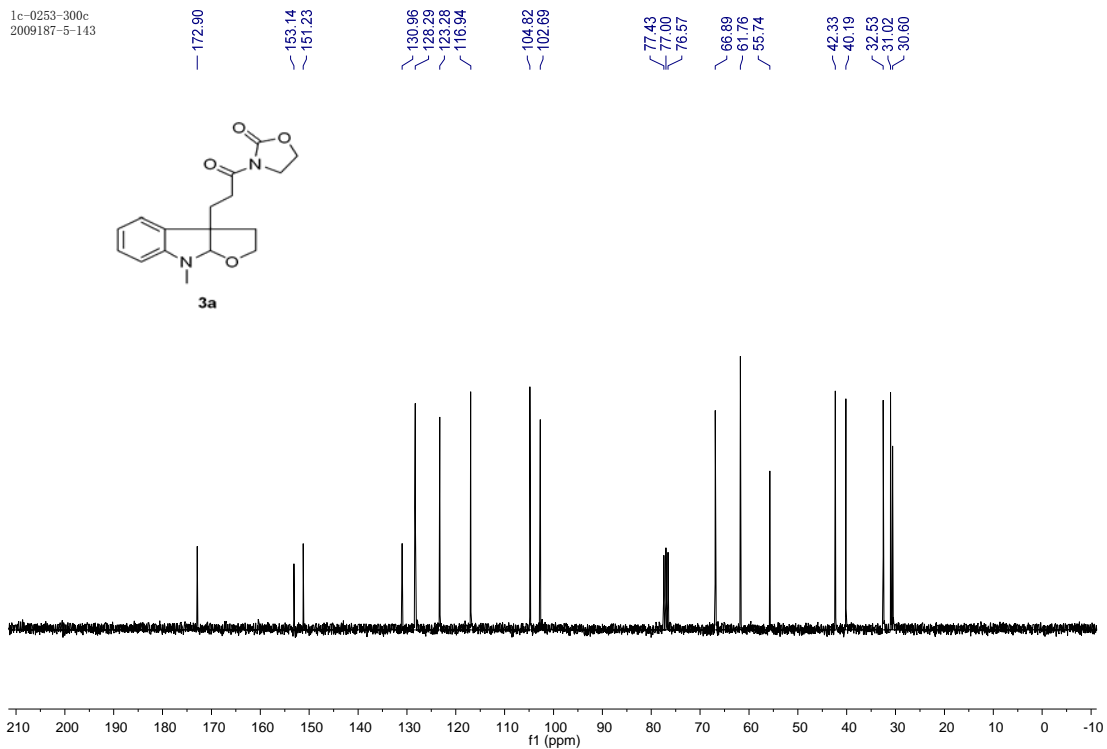
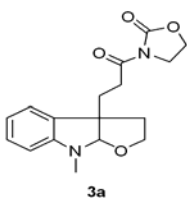


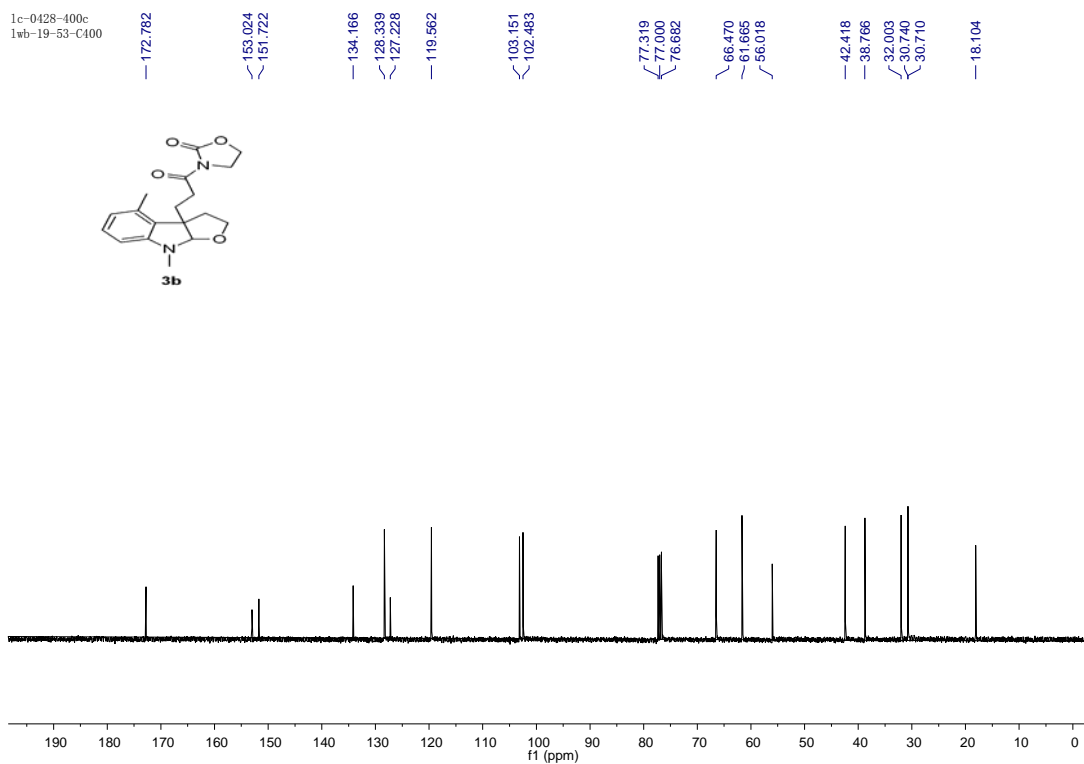
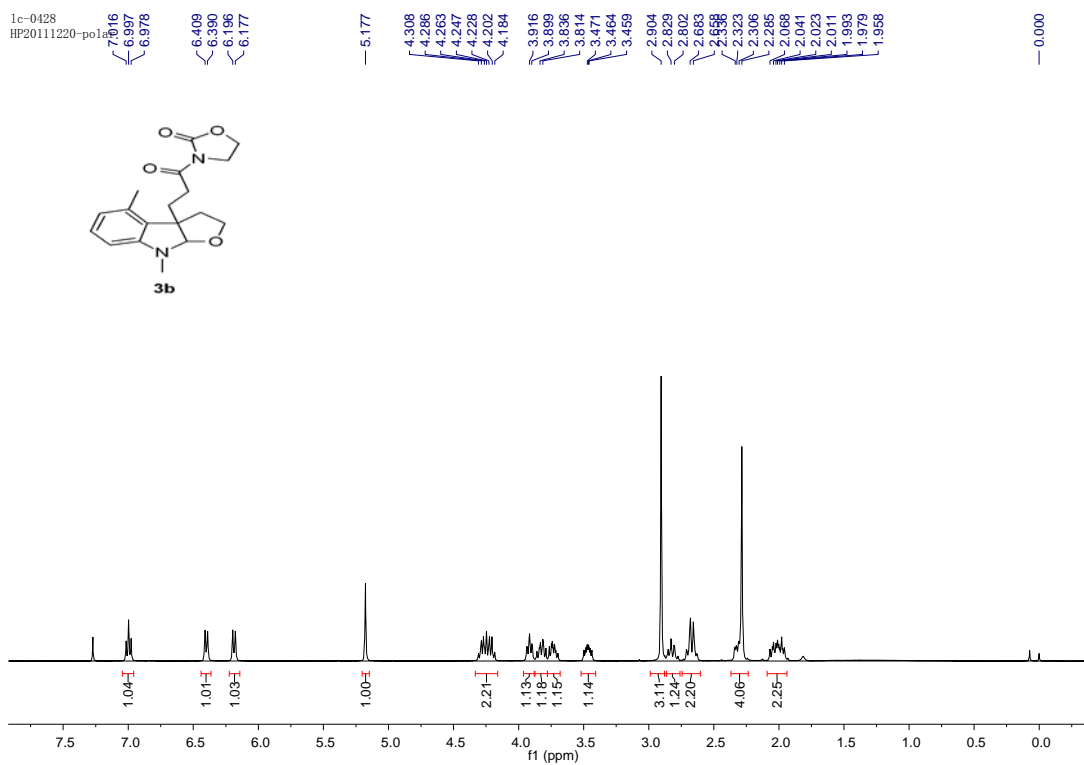


1c-0253



1c-0253-300c  
2009187-5-143





1c-0429  
HP20111220-polar

6.966  
6.946  
6.926  
6.750  
6.728  
6.289  
6.269

5.211

4.368  
4.346  
4.327  
4.307  
4.285  
4.263

3.935  
3.880  
3.859

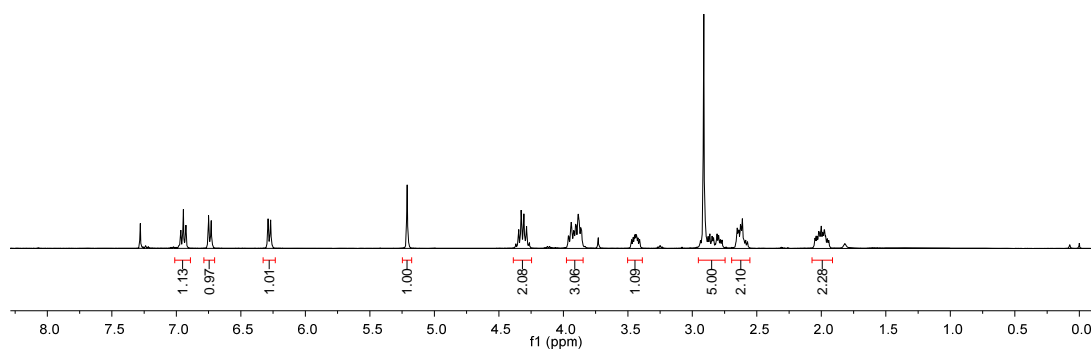
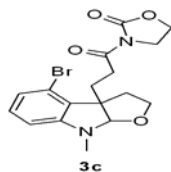
3.449  
3.443  
3.437  
3.431

2.911  
2.864  
2.808

2.796  
2.651  
2.640  
2.616  
2.616

2.040  
2.002  
1.953  
1.943

0.000



1c-0429-400c  
1wb-19-53-C400

172.913

153.160  
153.072

130.087  
127.727

120.987  
119.074

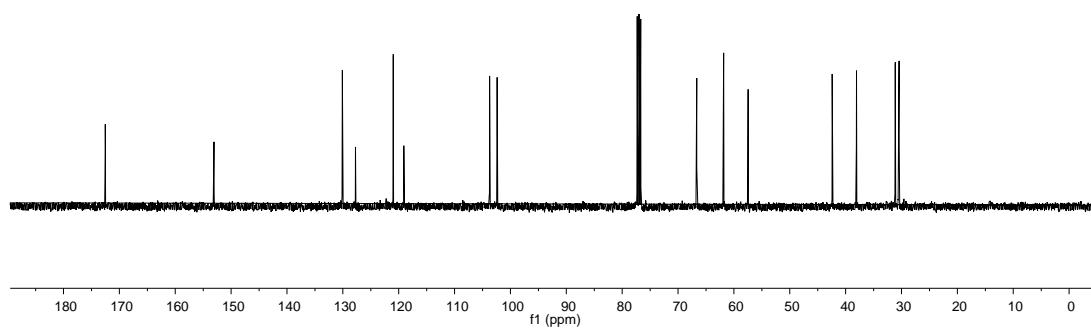
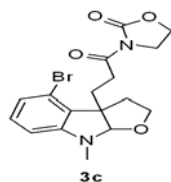
103.725  
102.379

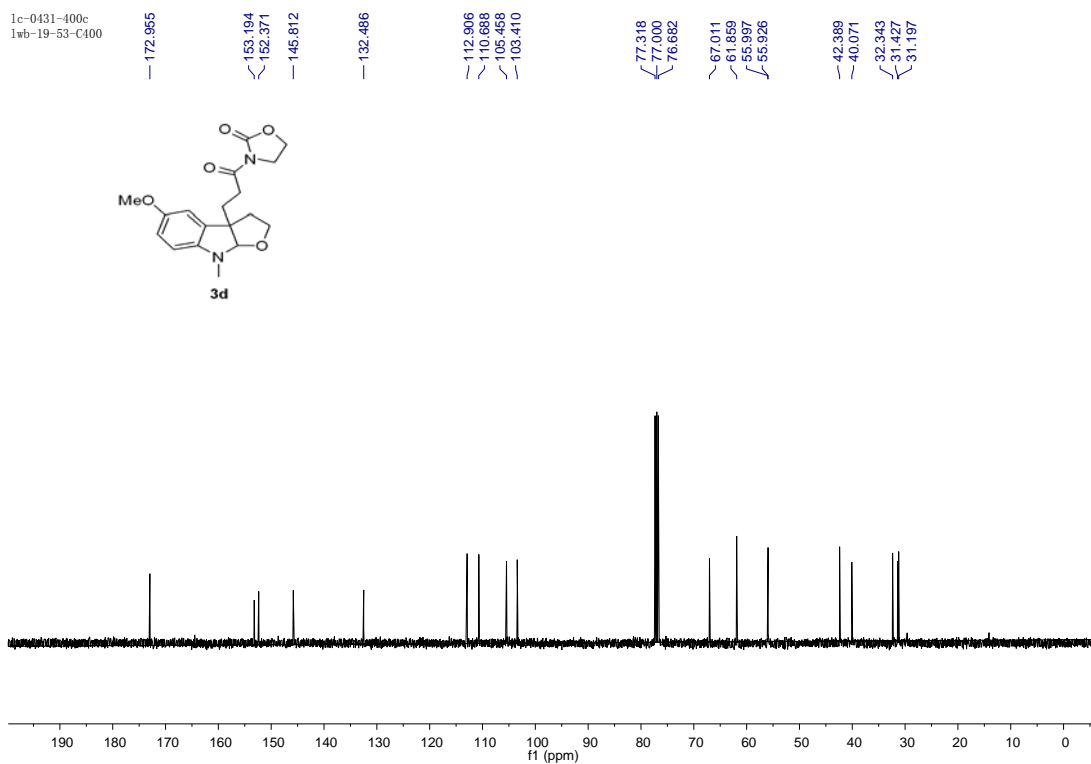
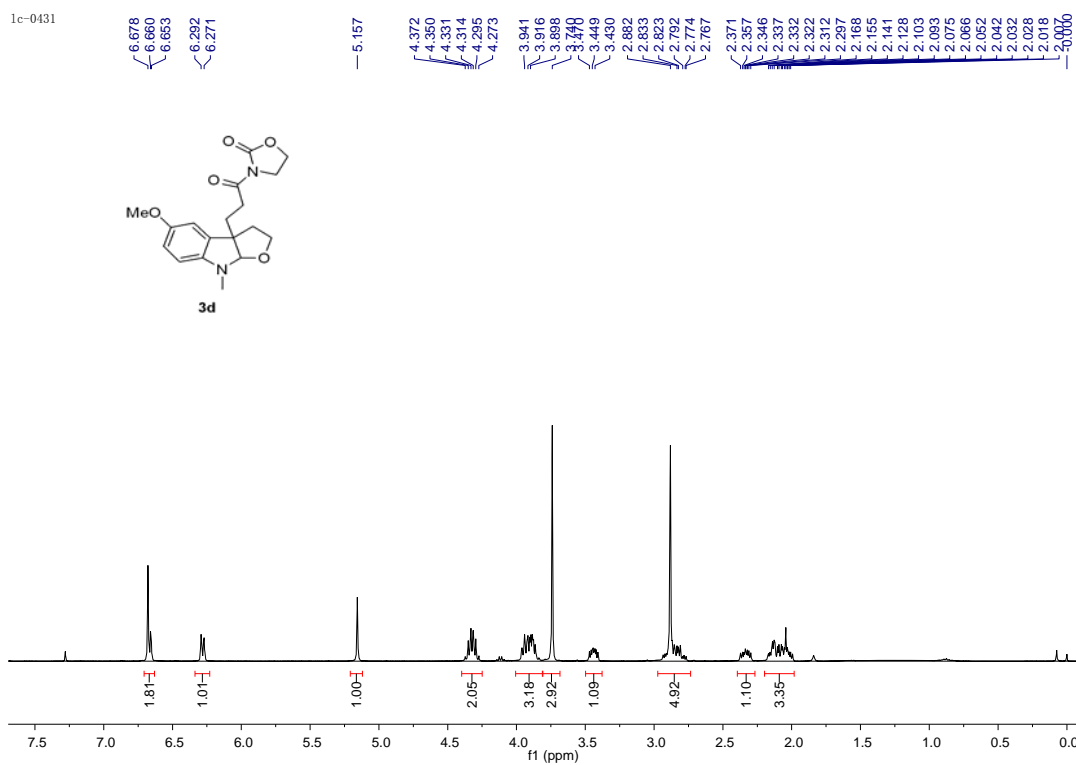
77.318  
77.000  
76.682

66.668  
61.834  
57.470

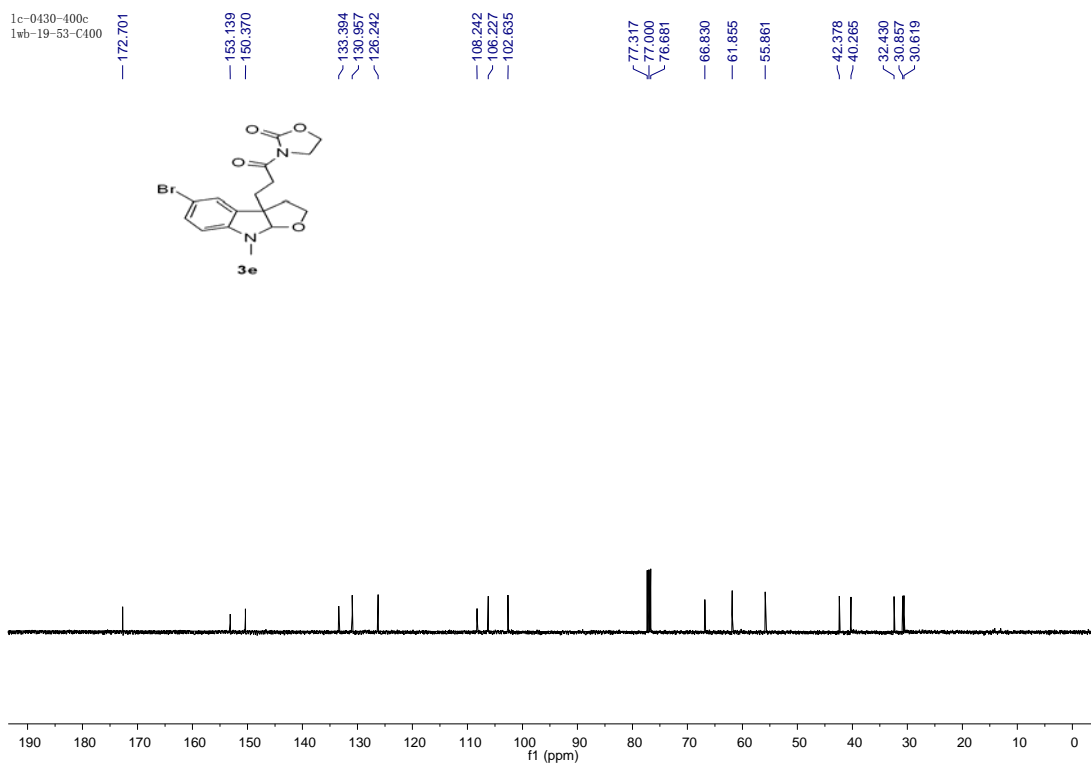
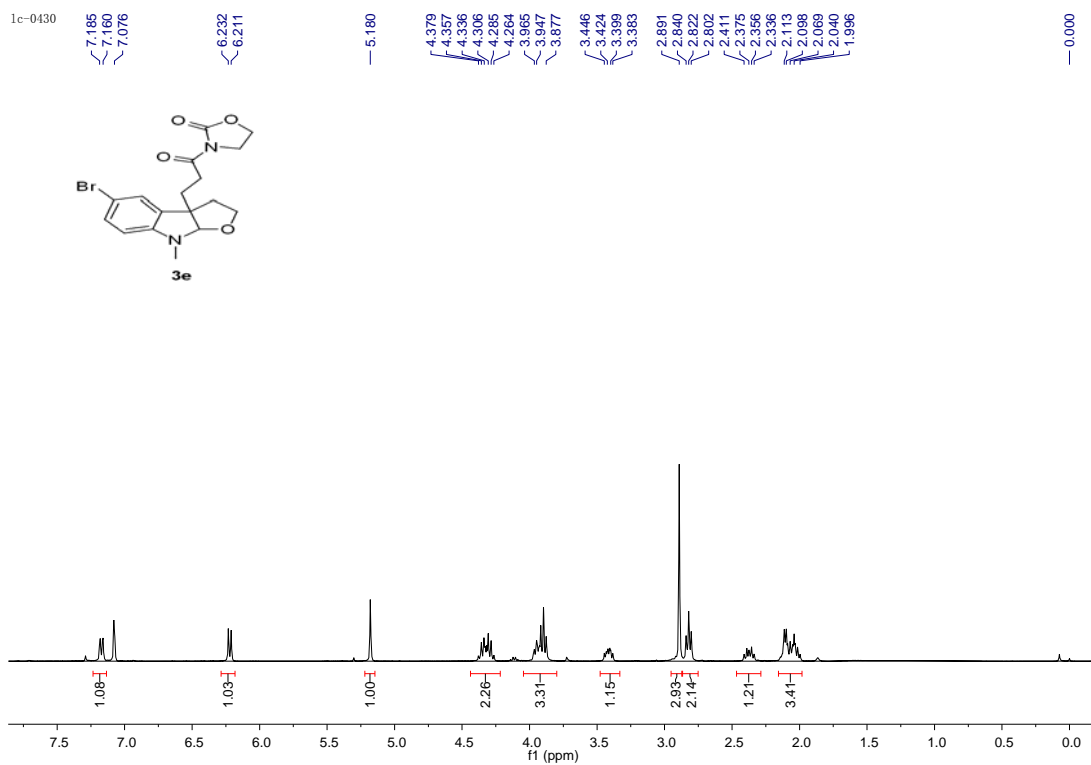
42.407  
38.069

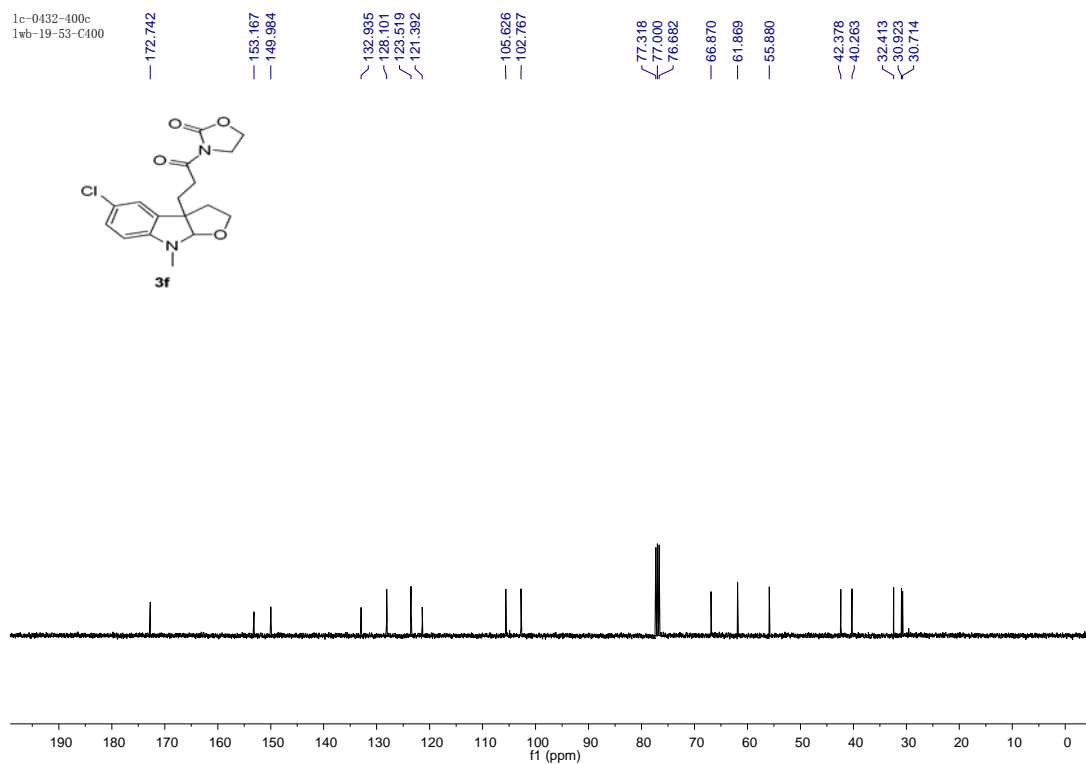
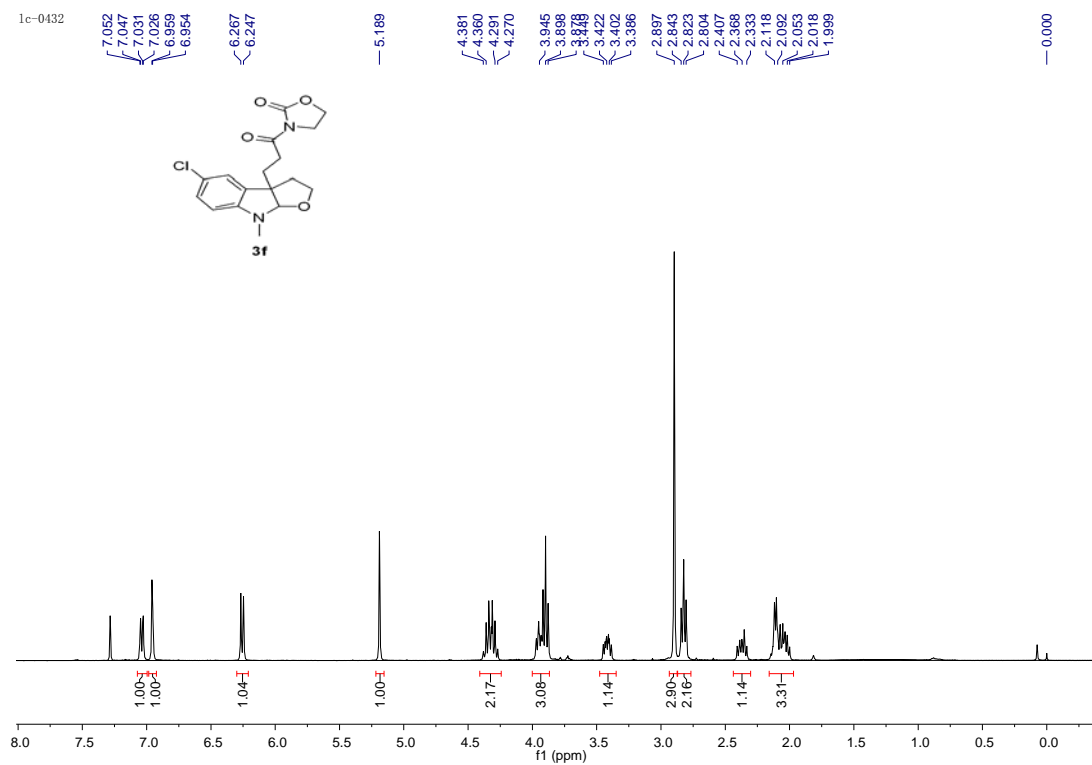
31.121  
30.570  
30.451

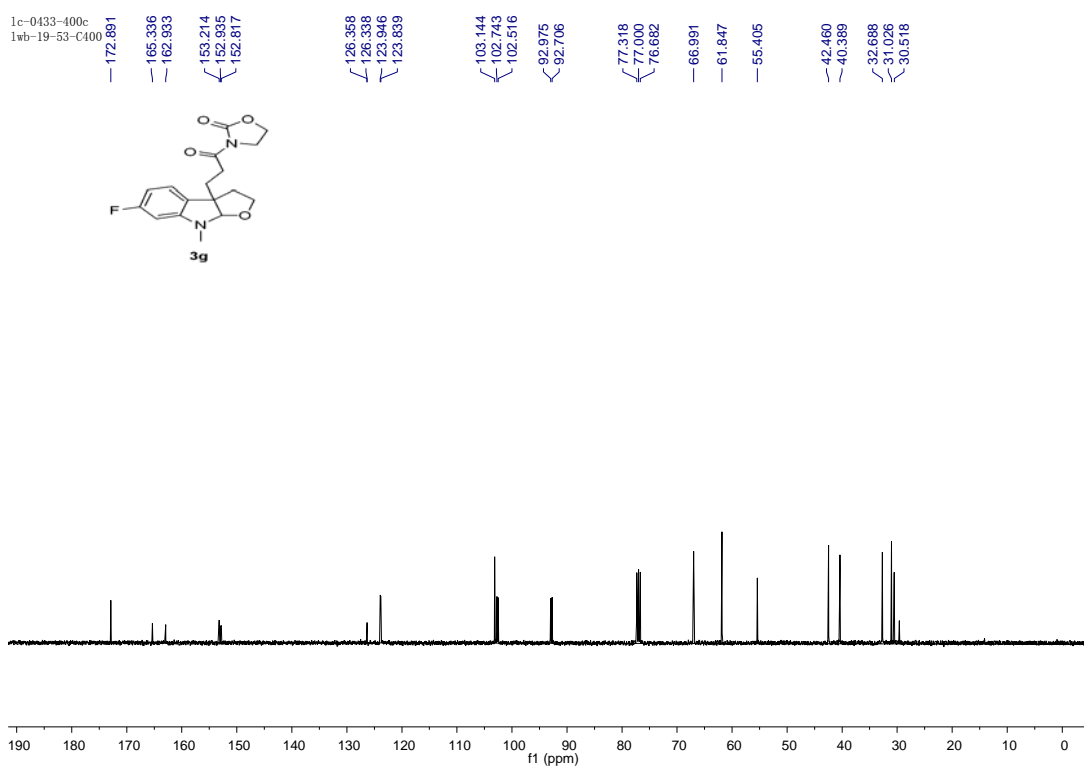
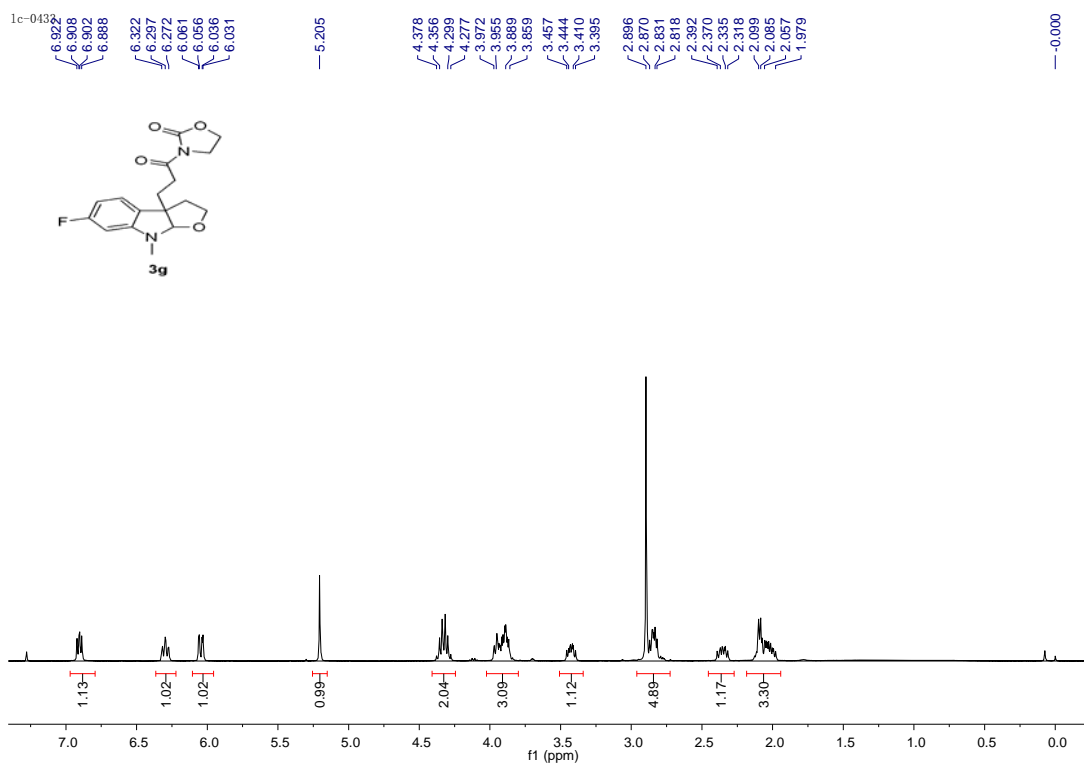






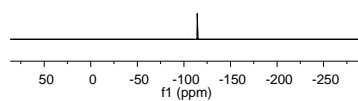
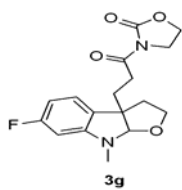






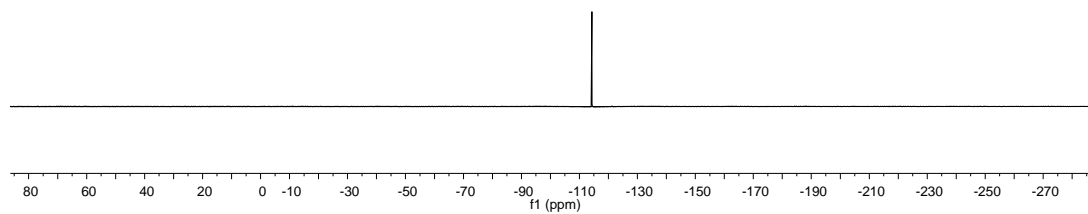
1c-0433-400f  
Std Fluorine

1c-0433-400f  
Std Fluorine

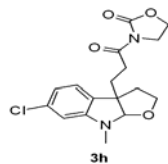


-114.29  
-114.30  
-114.32  
-114.33  
-114.34  
-114.36  
-114.39  
-114.41

-114.289  
-114.304  
-114.315  
-114.330  
-114.341  
-114.356



1c-0434



6.909  
6.889  
6.601  
6.576  
6.304

5.198

4.366  
4.344  
4.322  
4.296  
4.276

3.944  
3.877  
3.859

3.426  
3.414  
3.394

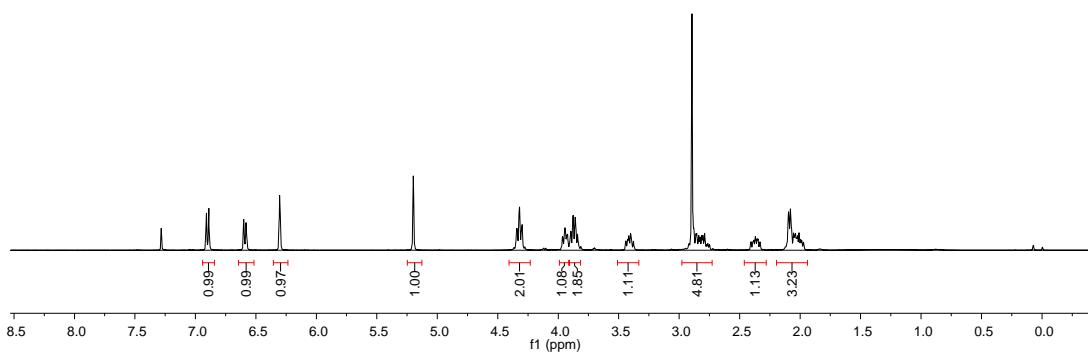
2.894  
2.855  
2.813

2.468  
2.383  
2.370

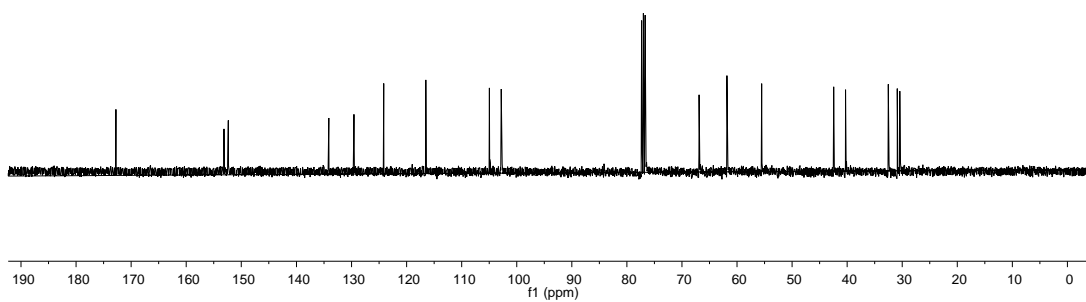
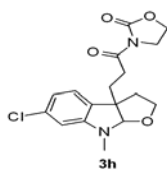
2.348  
2.332  
2.095

2.080  
2.053  
2.038  
2.021  
2.009  
1.996  
1.972

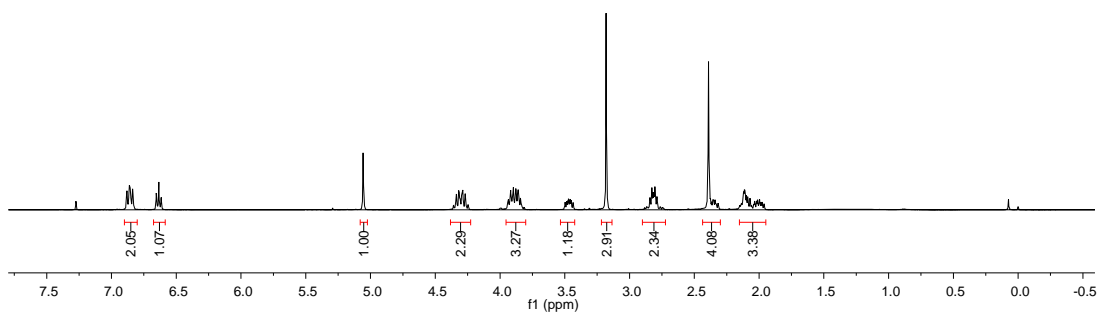
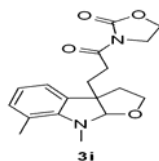
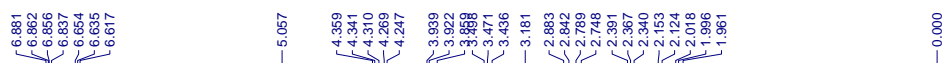
-0.000

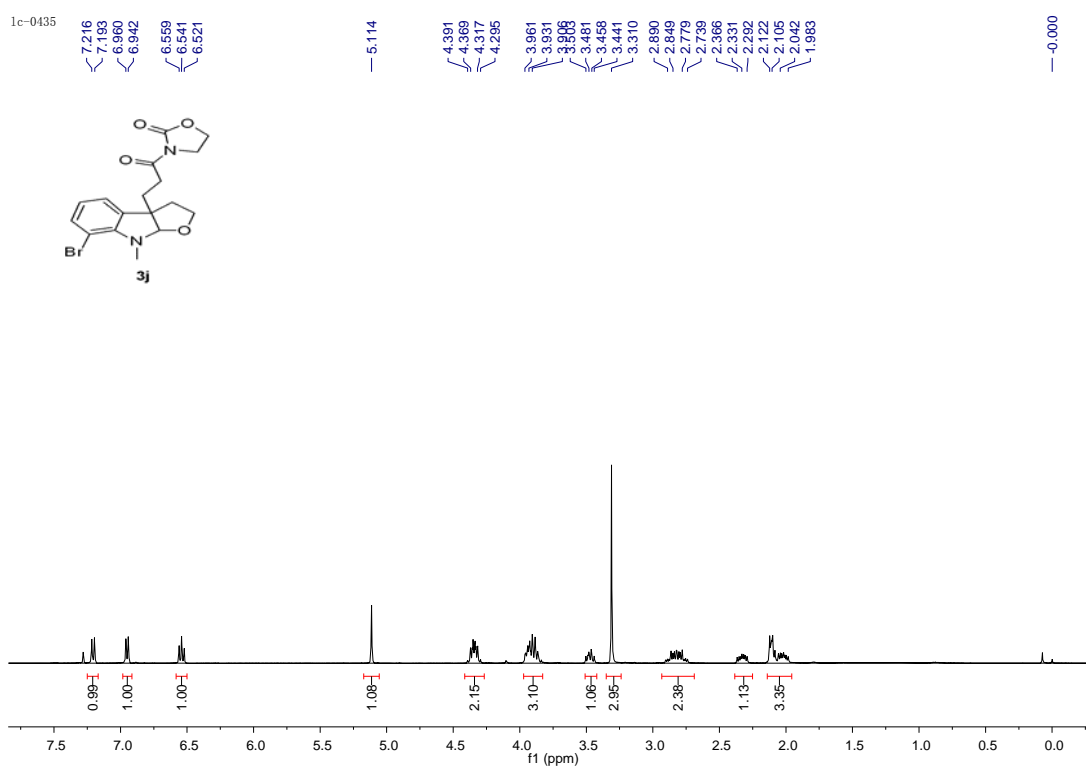
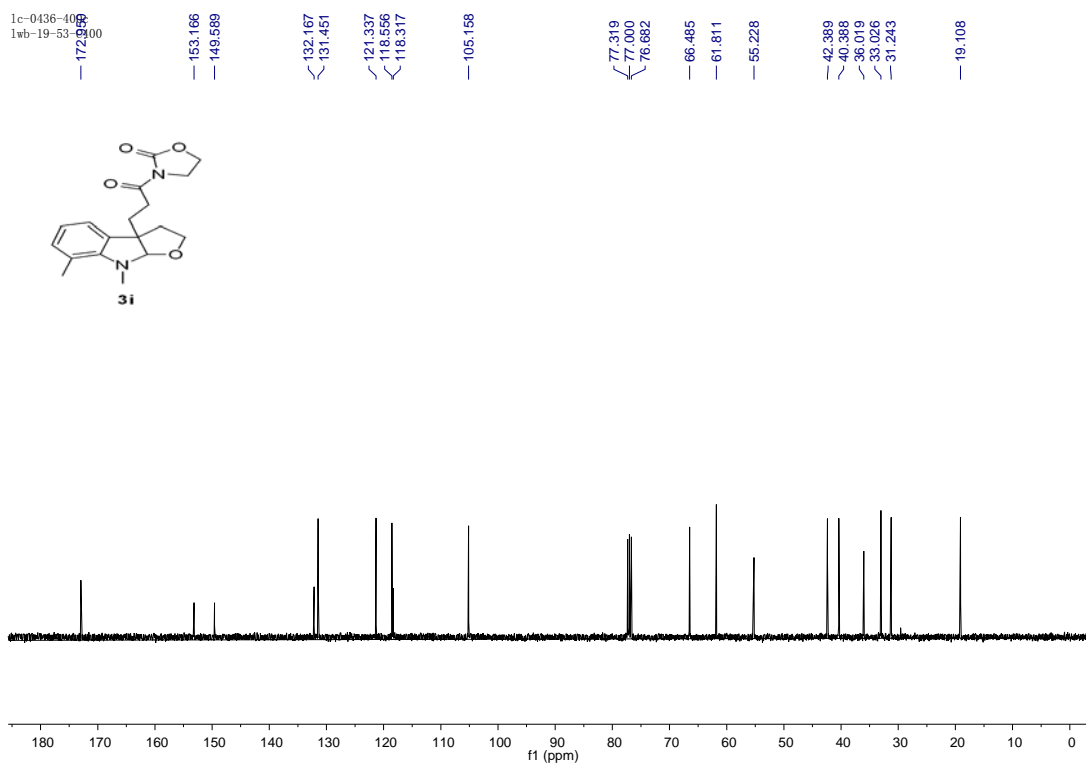


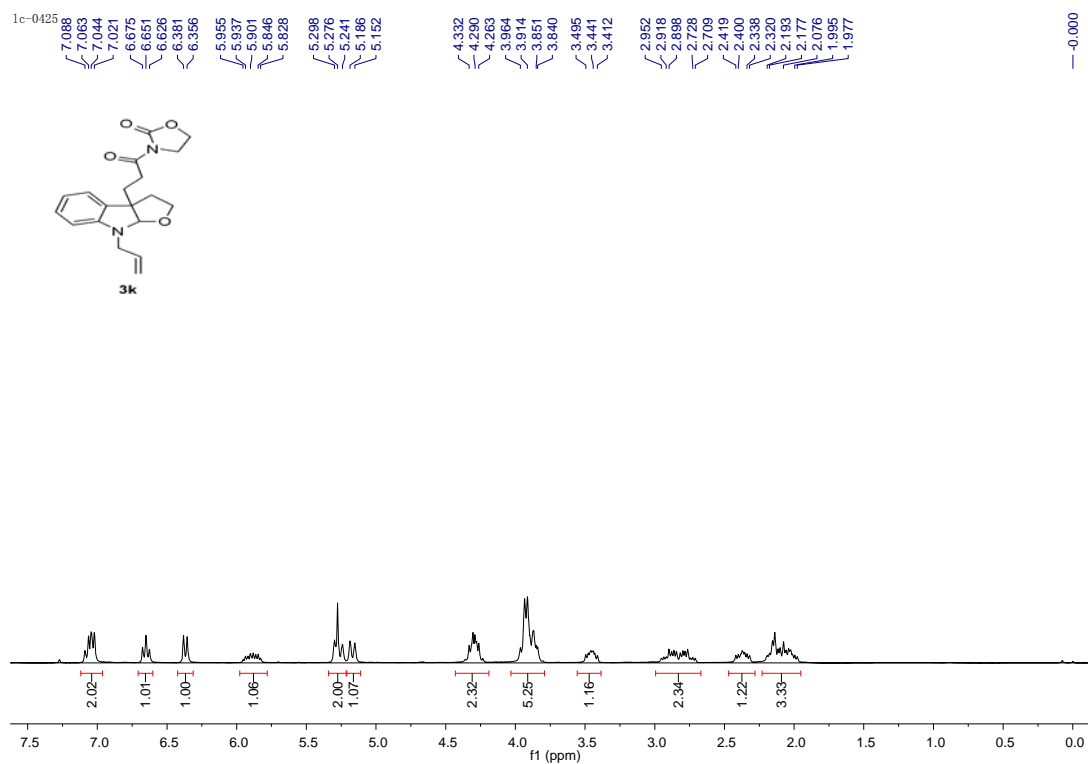
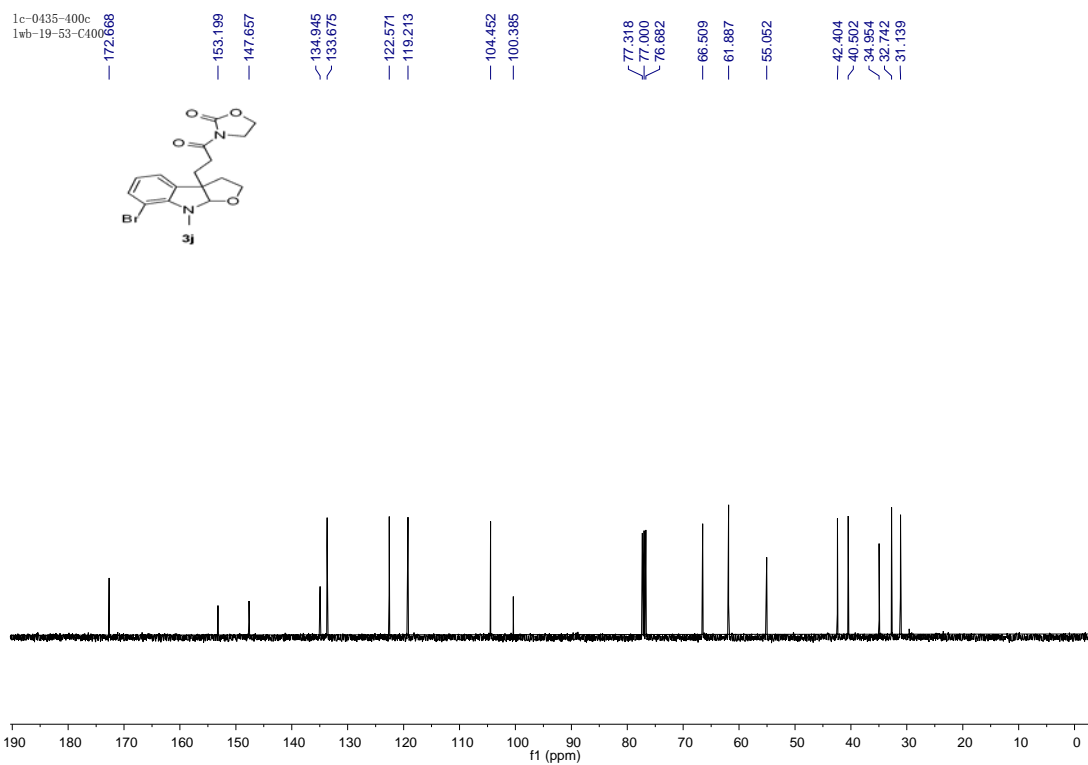
1c-0434-400c  
1wb-19-53-C400

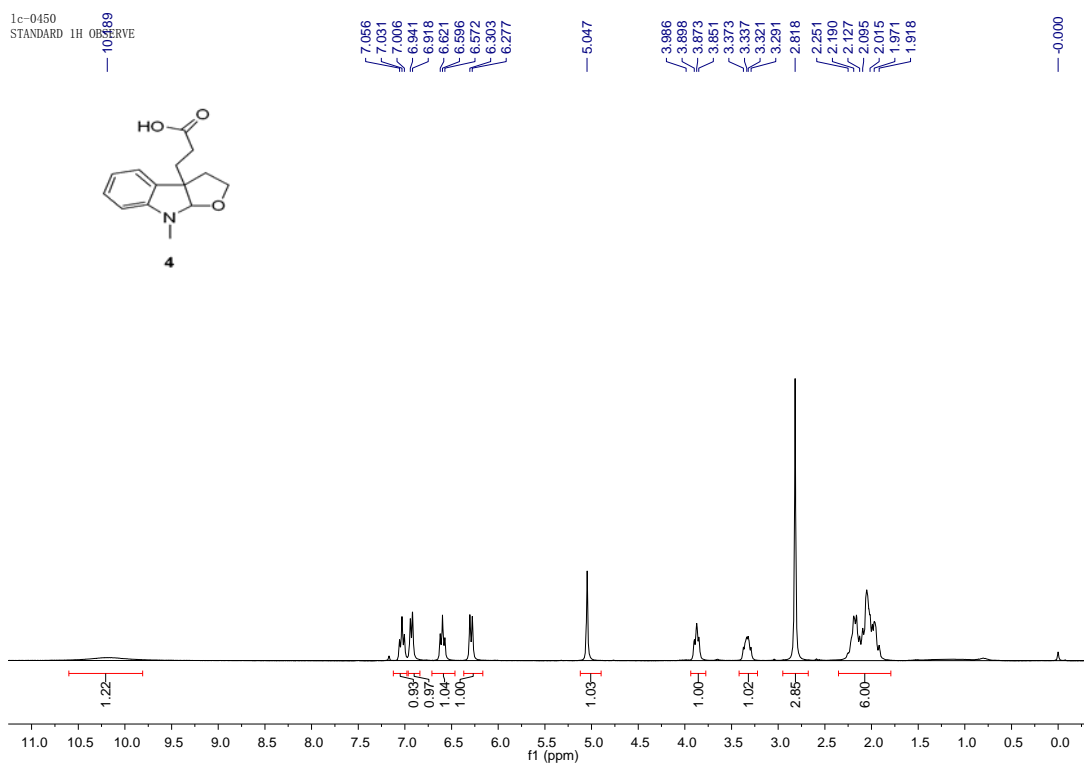
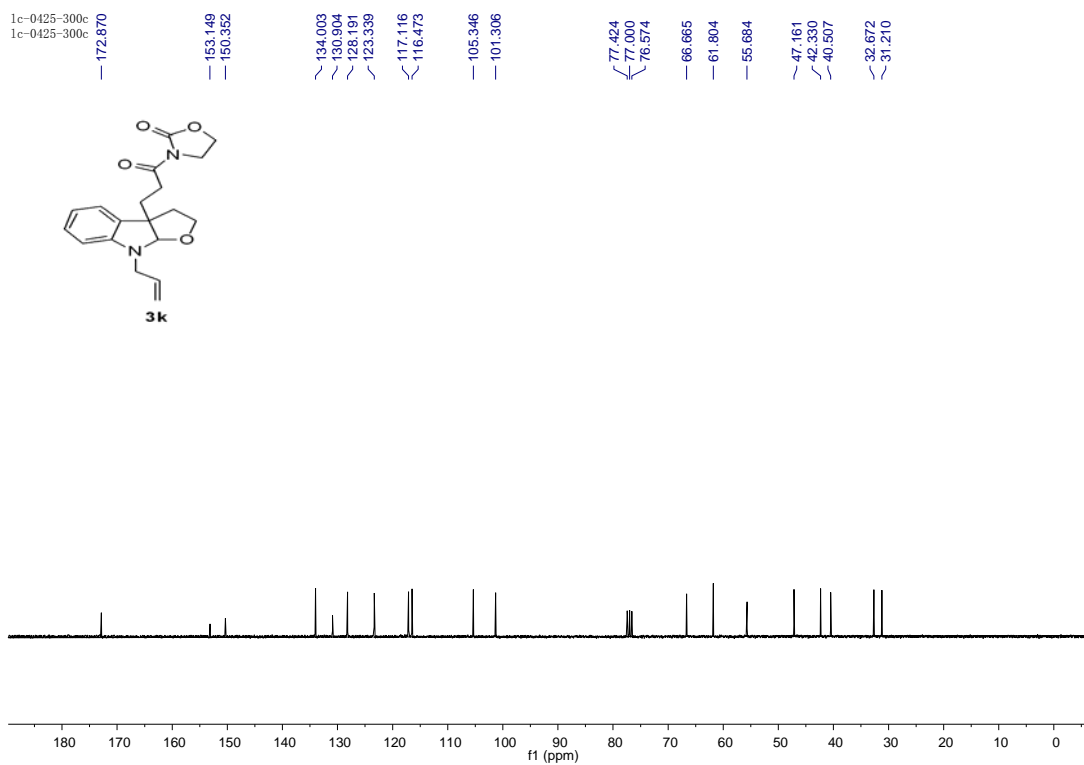


1c-0436











1c-0450-300c  
xiang-6-92-c300

—179.05

—151.11

—130.87  
—128.56  
—122.86  
—117.46

—105.12  
—102.44

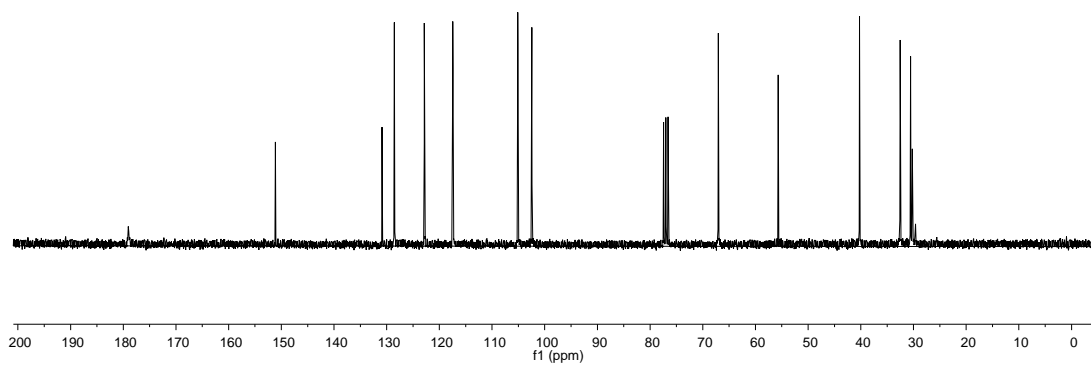
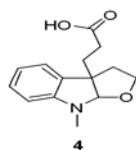
—77.42  
—77.00  
—76.58

—67.06

—55.67

—40.24

—32.53  
—30.54  
—30.22



1c-0451  
STANDARD 1H OBSERVE

7.058  
7.033  
7.006  
6.977  
6.823  
6.823  
6.594  
6.575  
6.303  
6.277

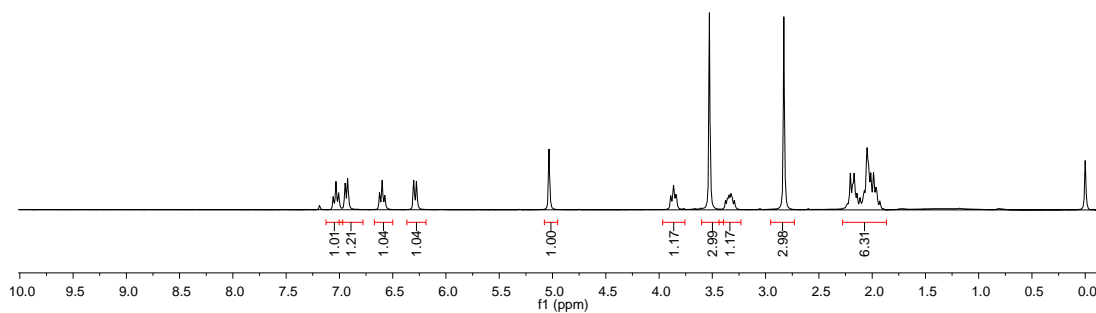
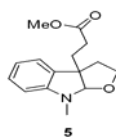
—5.033

3.890  
3.864  
3.841  
3.527  
3.377  
3.341  
3.316  
3.294

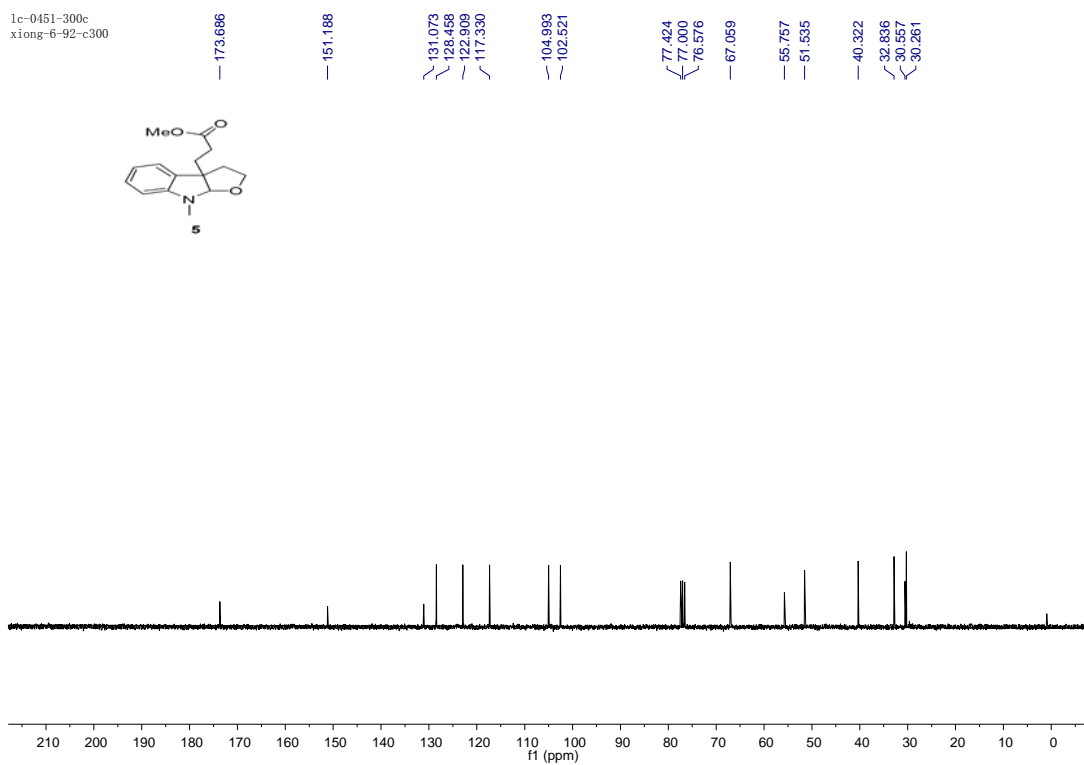
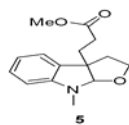
—2.829

2.205  
2.142  
2.074  
2.048  
2.013  
1.987  
1.963  
1.929

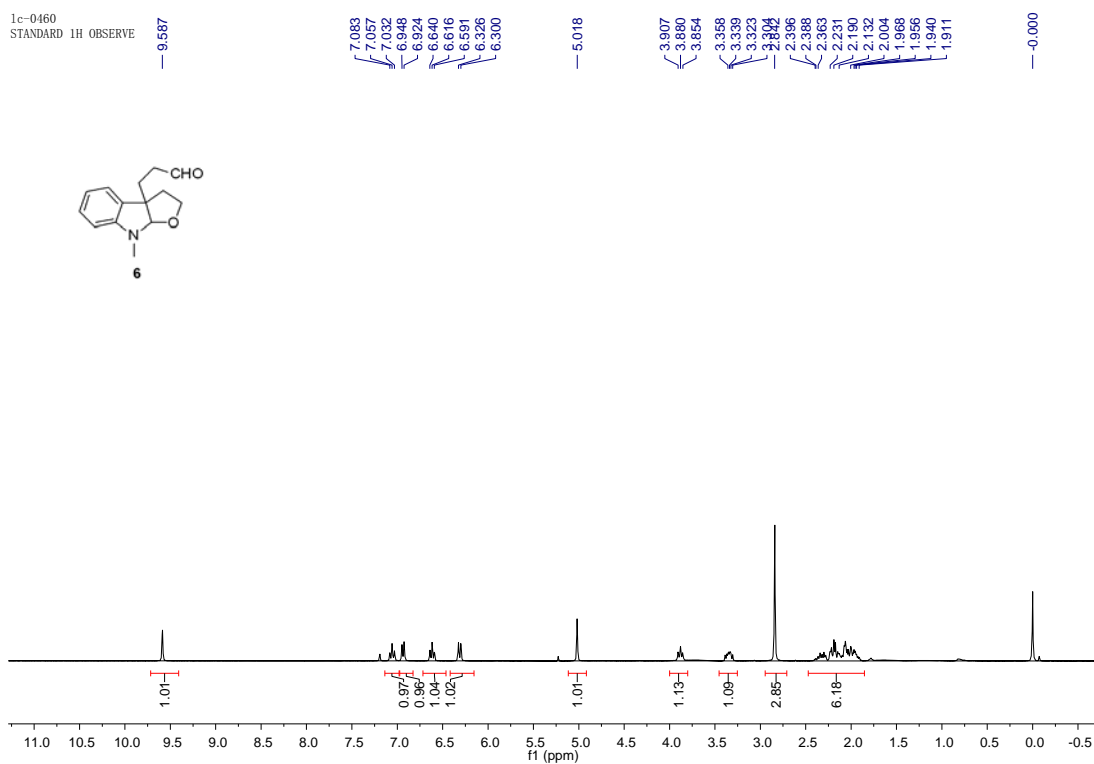
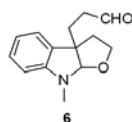
—0.000



1c-0451-300c  
xiang-6-92-c300

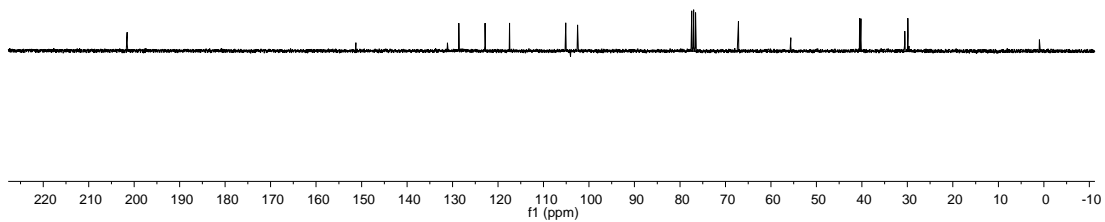
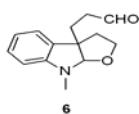


1c-0460  
STANDARD 1H OBSERVE



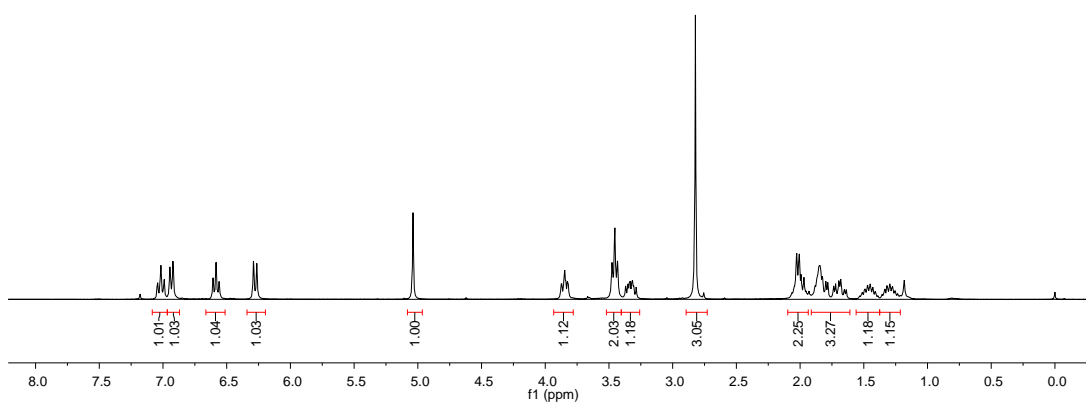
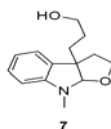
1c-0460-300c  
2007115-F1

201.623  
151.215  
131.102  
128.874  
123.031  
117.534  
105.032  
102.378  
77.425  
77.000  
76.576  
67.210  
55.634  
40.433  
39.903  
30.576  
30.062



1c-0449  
STANDARD 1H OBSER

7.714  
7.710  
6.981  
6.946  
6.922  
6.608  
6.584  
6.264  
5.038  
3.875  
3.852  
3.819  
3.476  
3.454  
3.433  
3.369  
3.340  
3.328  
2.063  
2.026  
2.006  
1.969  
1.882  
1.798  
1.782  
1.737  
1.696  
1.681  
1.652  
1.637  
1.511  
1.489  
1.450  
1.410  
1.335  
1.318  
1.296  
1.256  
1.235  
1.200



1c-0449-300c  
xiong-6-92-c300

151.099

132.277

128.147

122.825

117.141

104.803

102.860

77.424

77.000

76.577

66.979

62.756

56.072

40.374

34.315

30.617

28.615

