

Supporting Information

Iridium-Catalyzed Asymmetric Hydroalkynylation Reactions of Oxabenzonorbornadienes

Jun Hu,^a Qingjing Yang,^a Jianbin Xu,^a Chao Huang,^a Baomin Fan,^{a,*} Jun Wang,^b
Chengyuan Lin,^b Zhaoxiang Bian^{b,c} and Albert, S. C. Chan^{c,*}

^a Key Laboratory of Chemistry in Ethnic Medicinal Resources, State Ethnic Affairs Commission & Ministry of Education, Yunnan University of Nationalities, Kunming, 650500, China. Fax: (+86)-871-5910017, E-mail: adams.bmf@hotmail.com

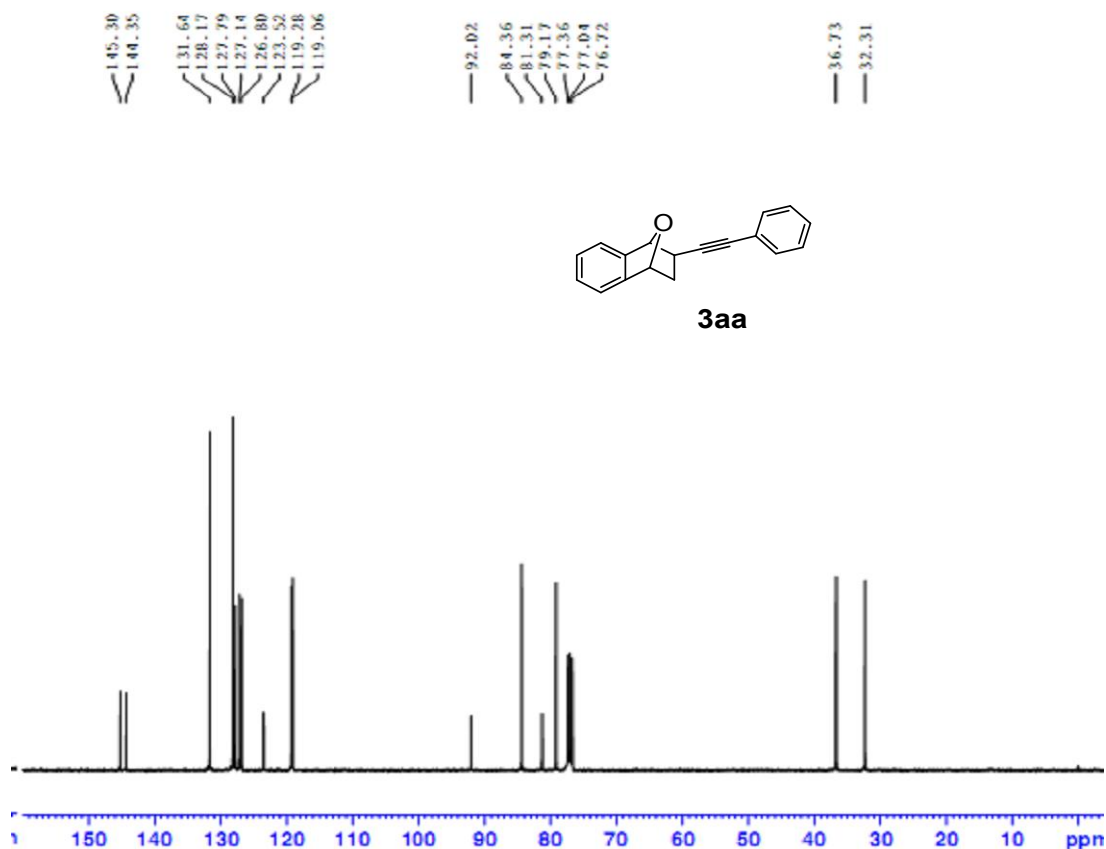
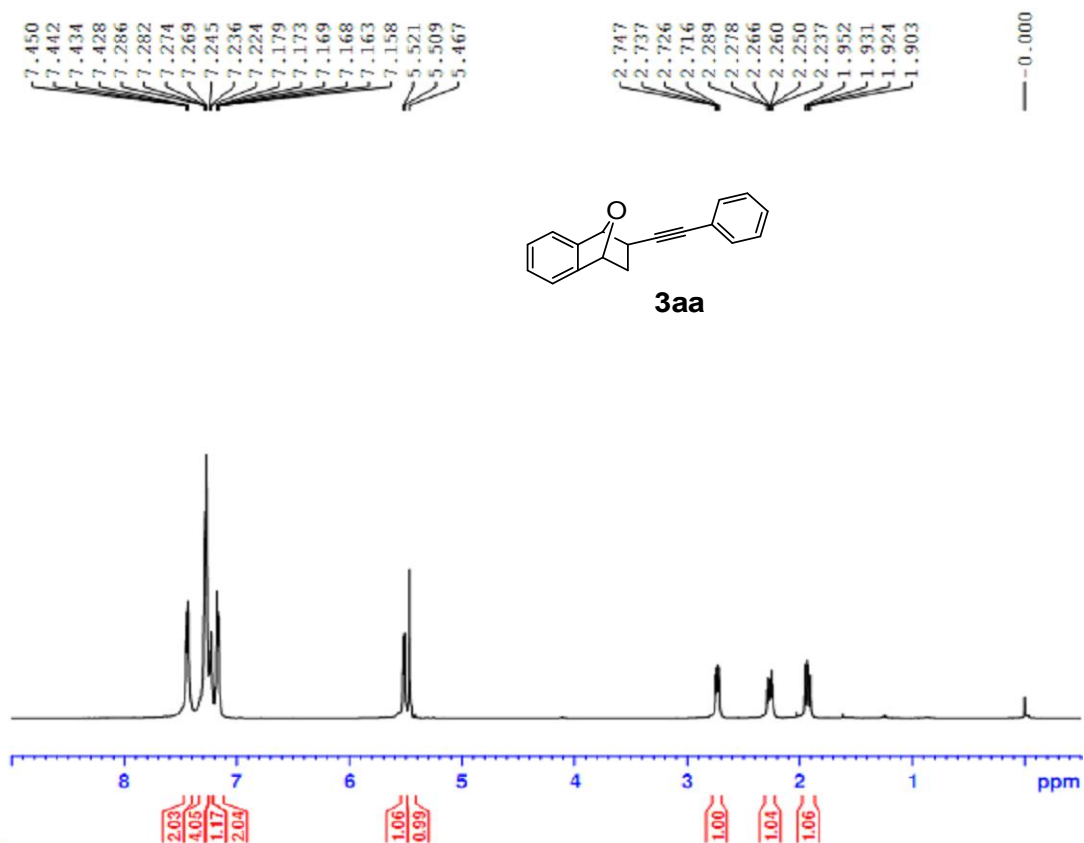
^b School of Chinese Medicine, Hong Kong Baptist University, Hong Kong, China.

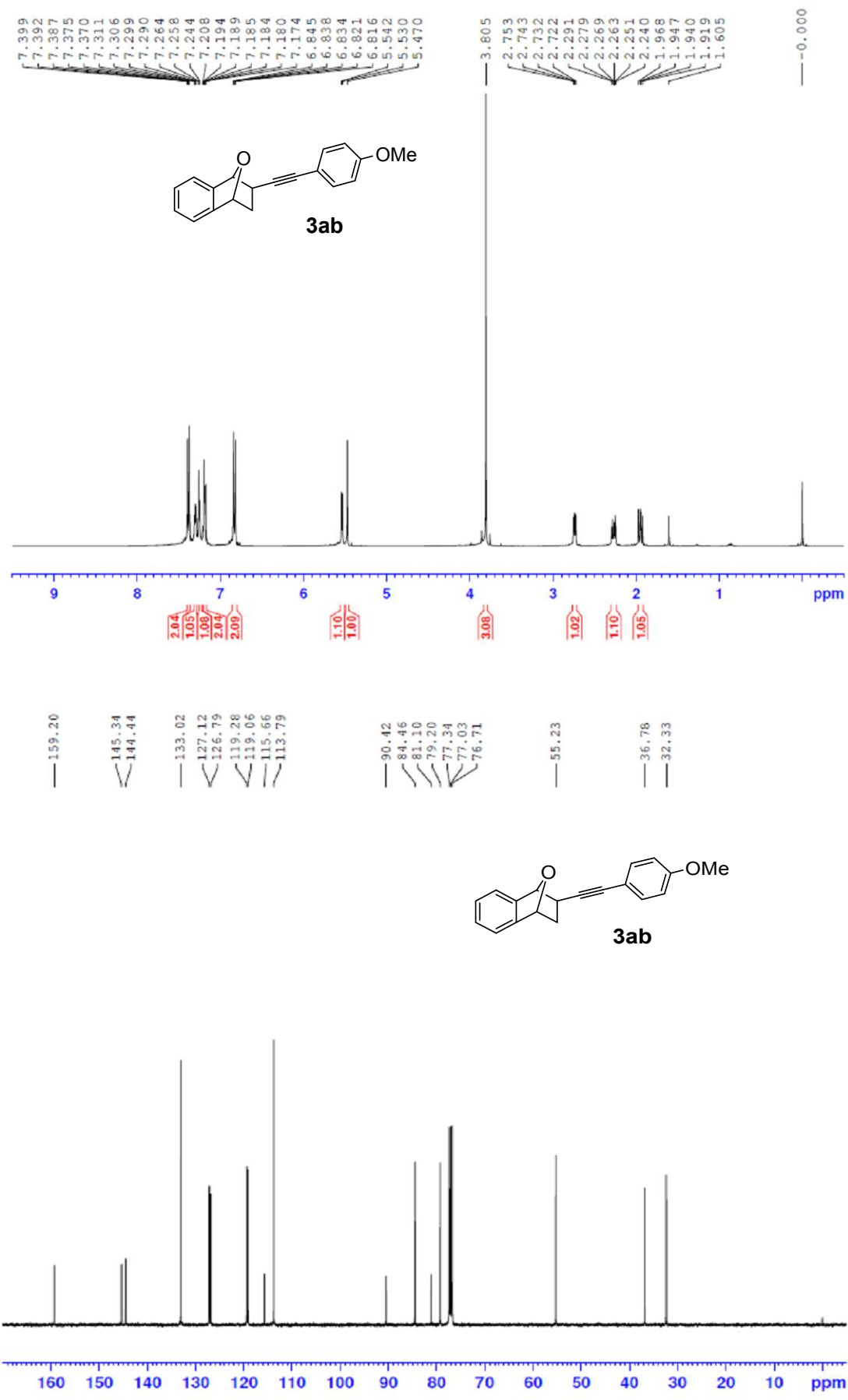
^c Institute of Creativity, Hong Kong Baptist University, Hong Kong, China. Fax: +852-34112123, E-mail: ascchan@hkbu.edu.hk

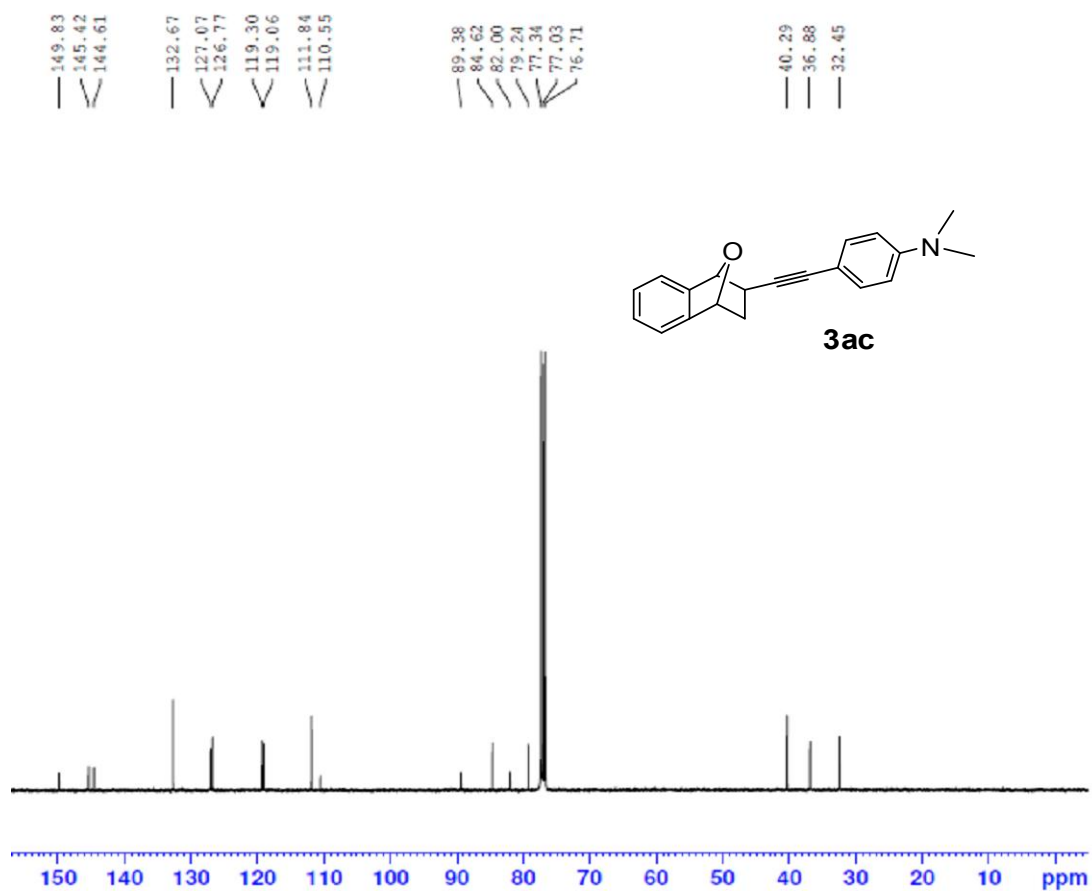
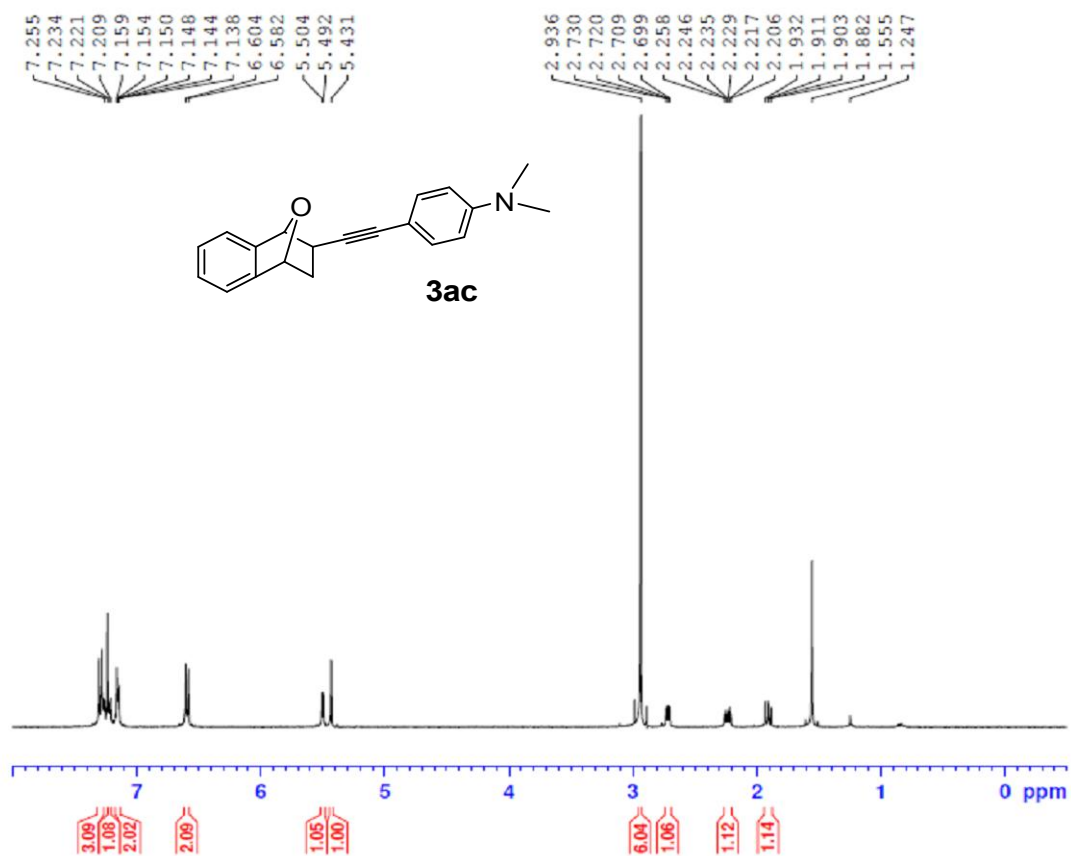
Table of Contents

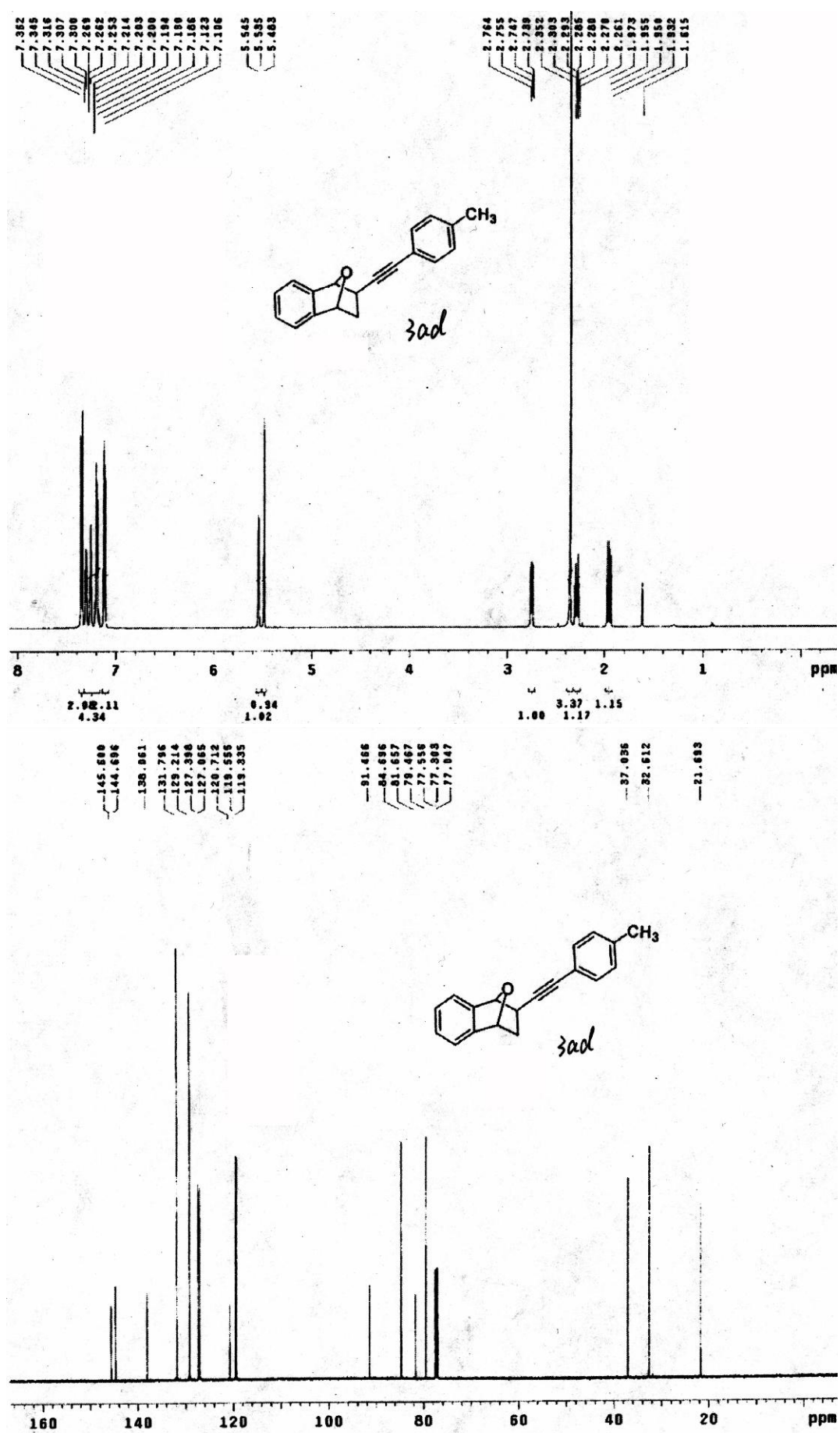
1. Copies of ¹ H and ¹³ C NMR spectra of compounds 3aa-ak, 3bb-gb.....	S2-S18
2. Copies of HPLC spectra of compounds 3aa-ak,3bb-gb.....	S19-S35

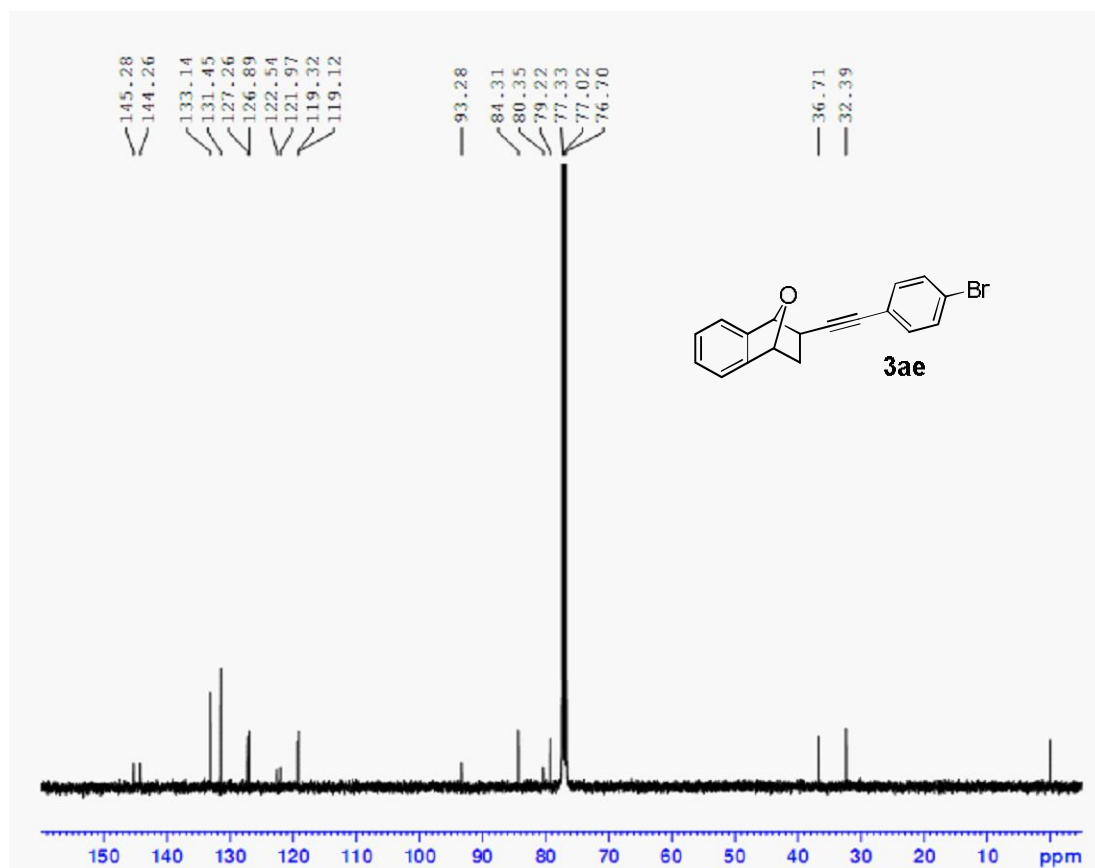
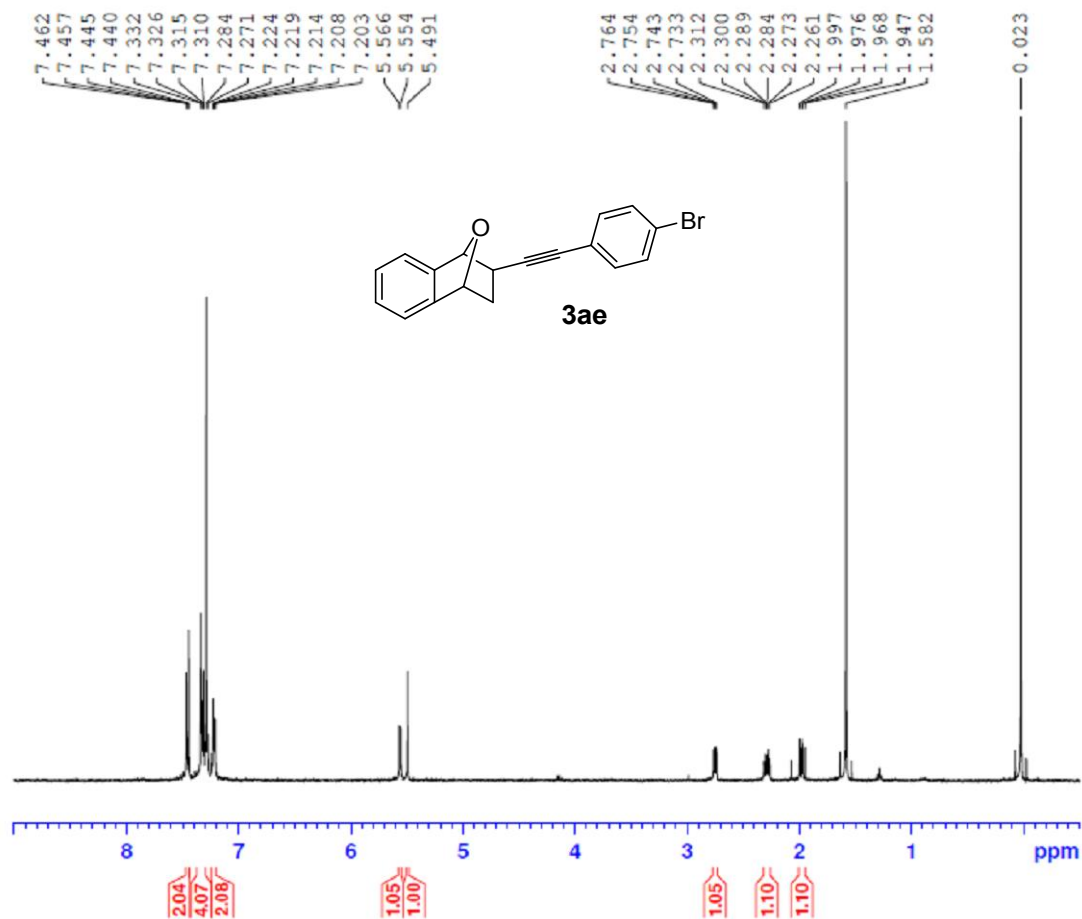
1. Copies of ^1H and ^{13}C NMR spectra of compounds 3aa-ak, 3bb-gb

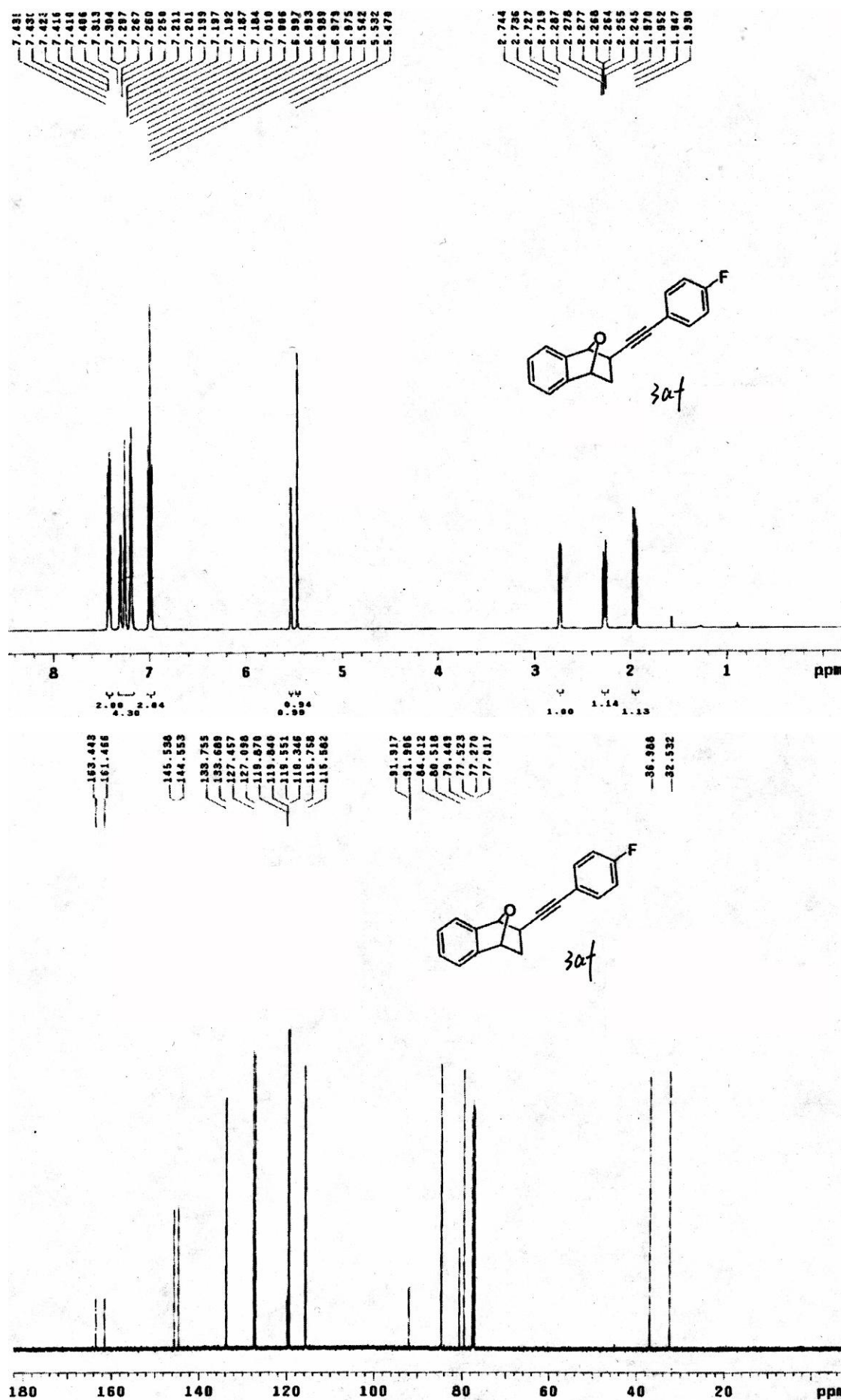


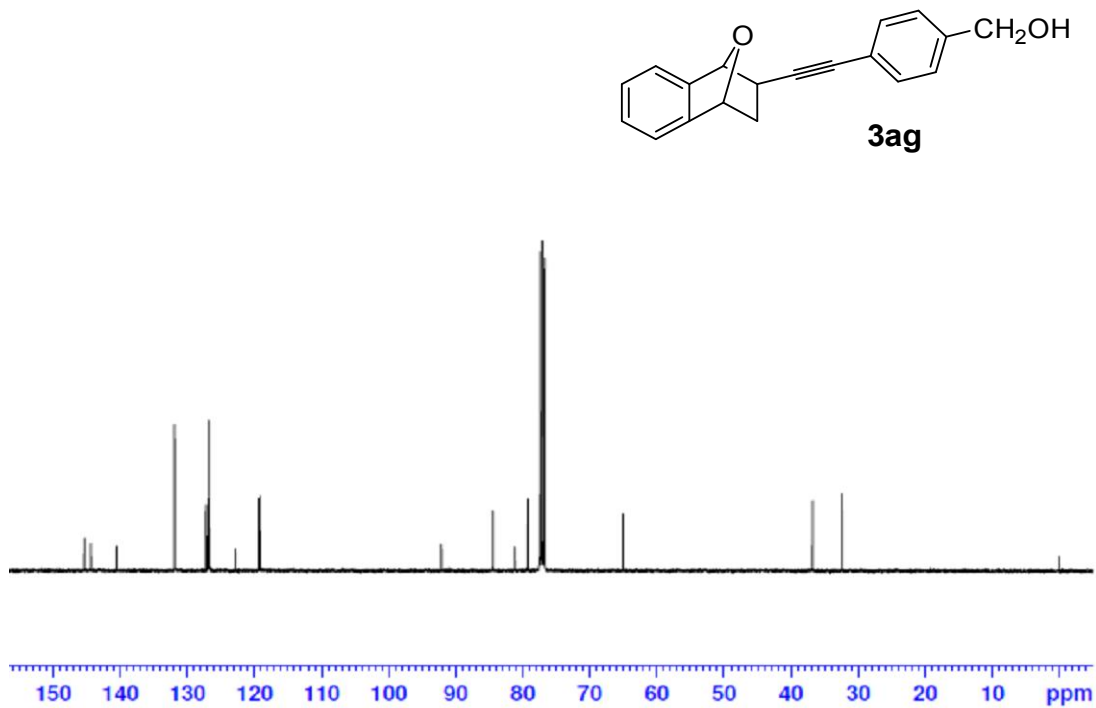
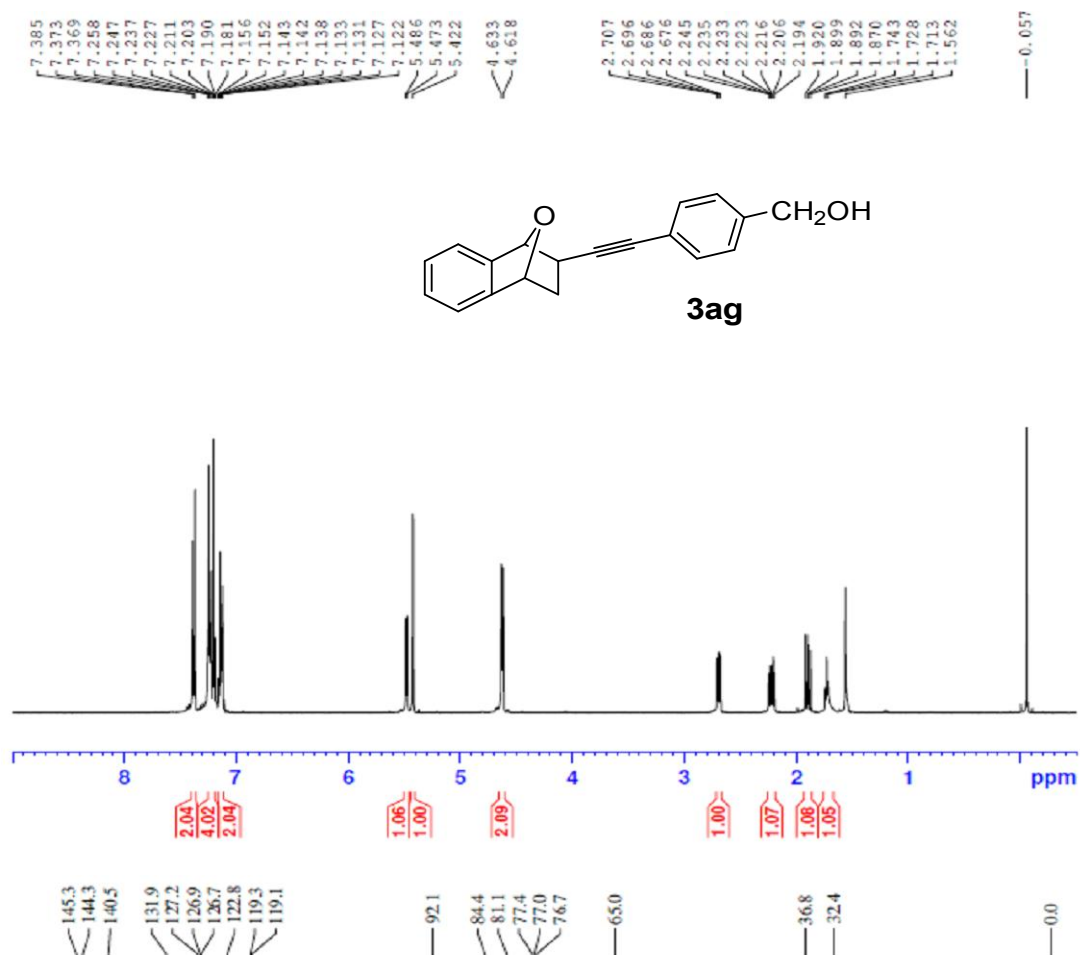


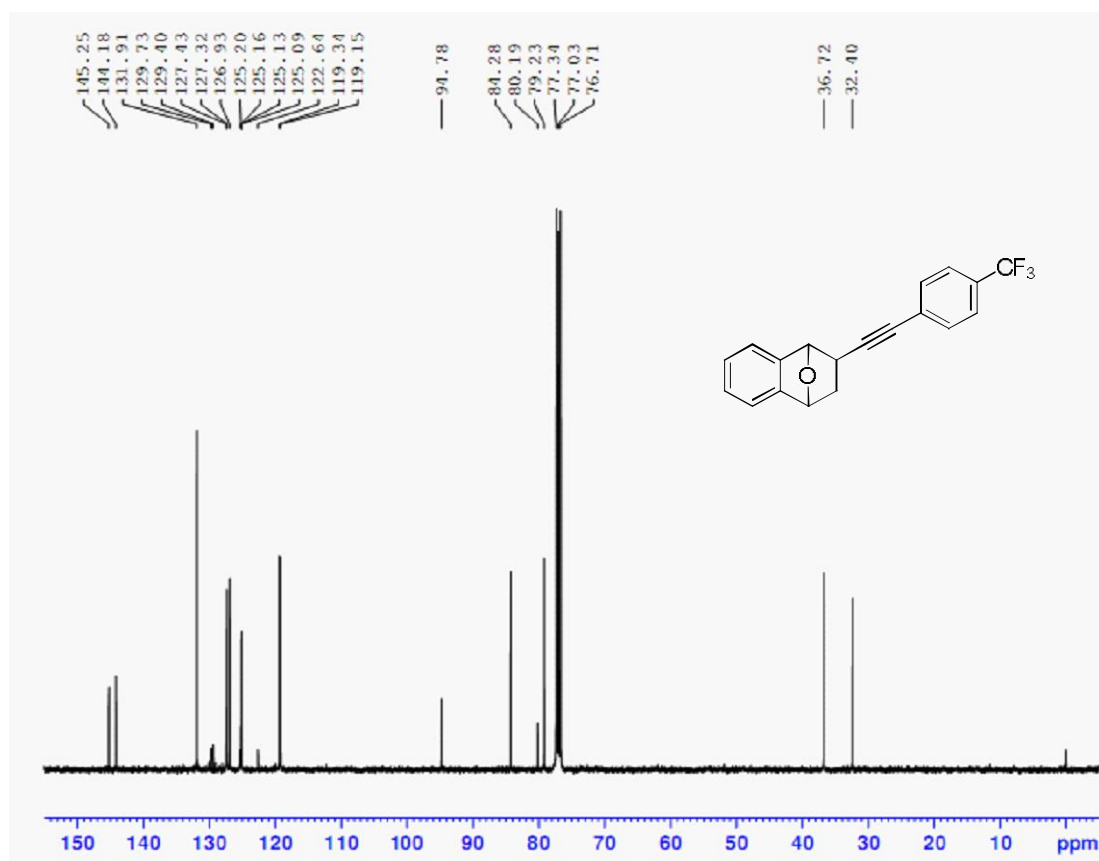
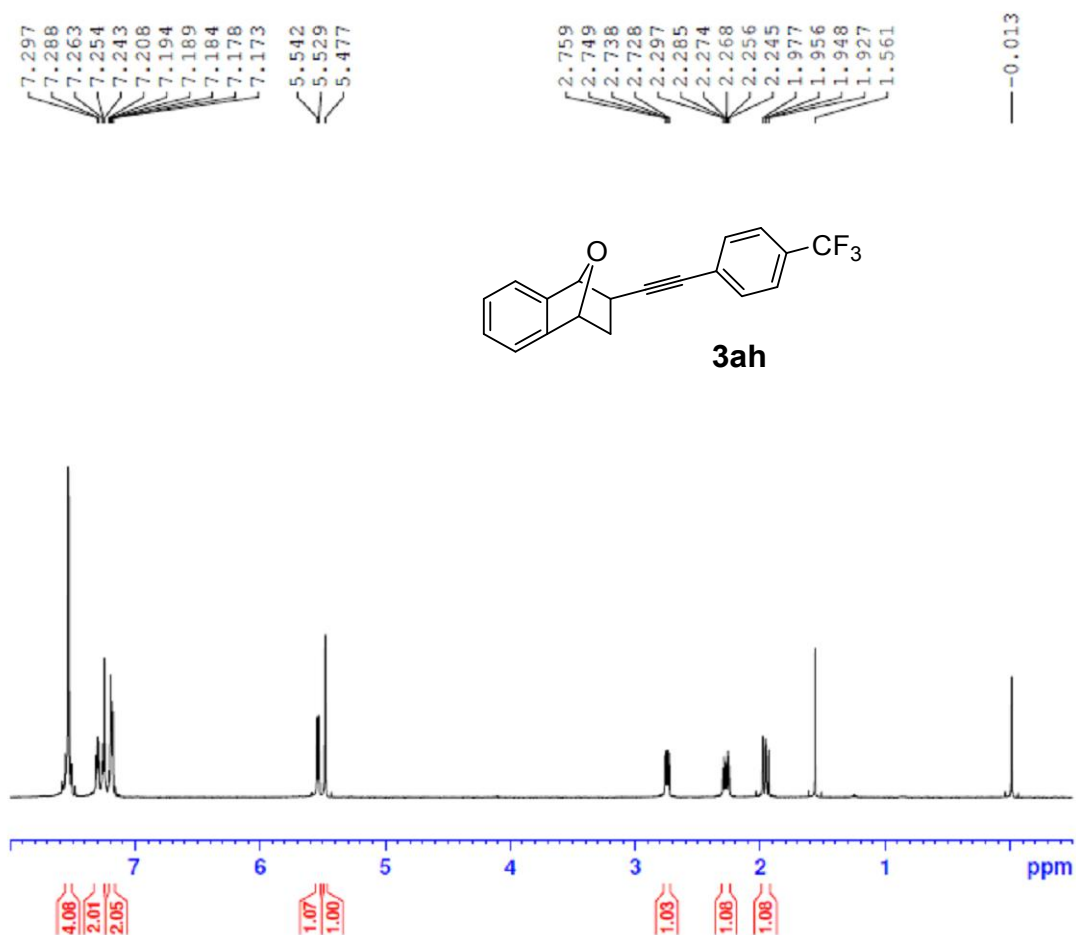


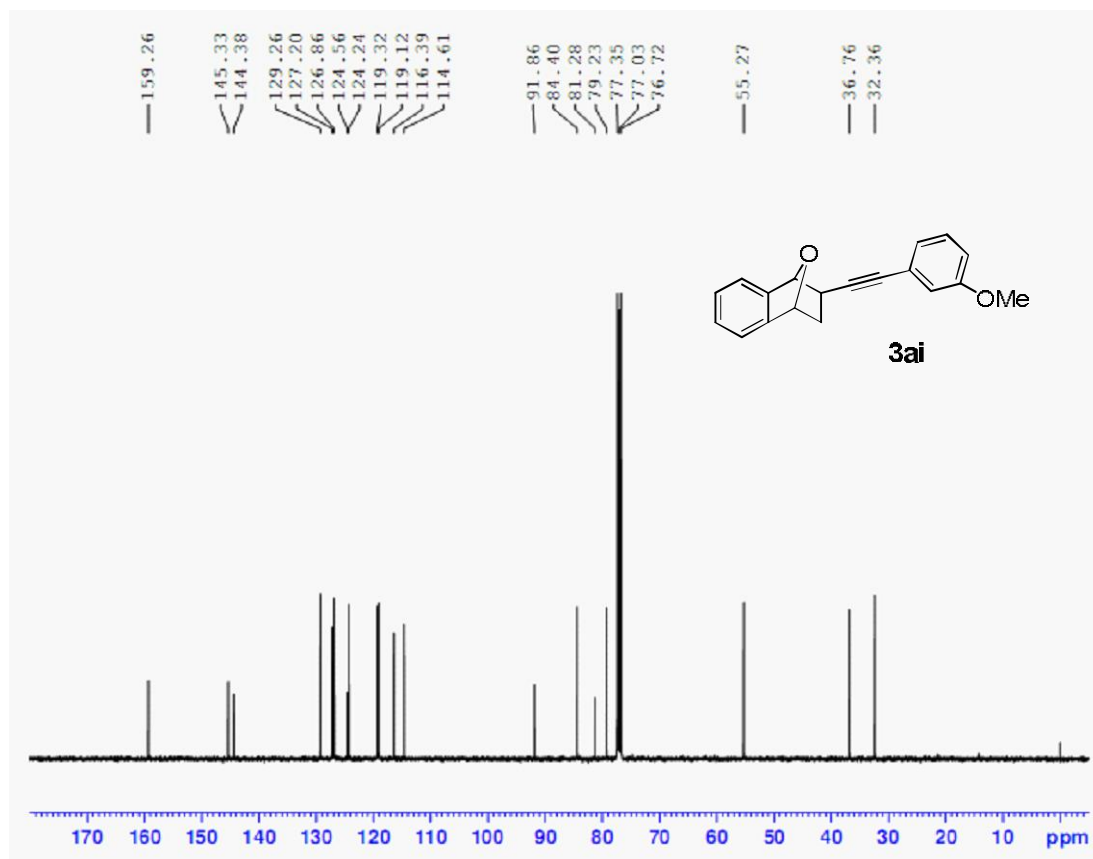
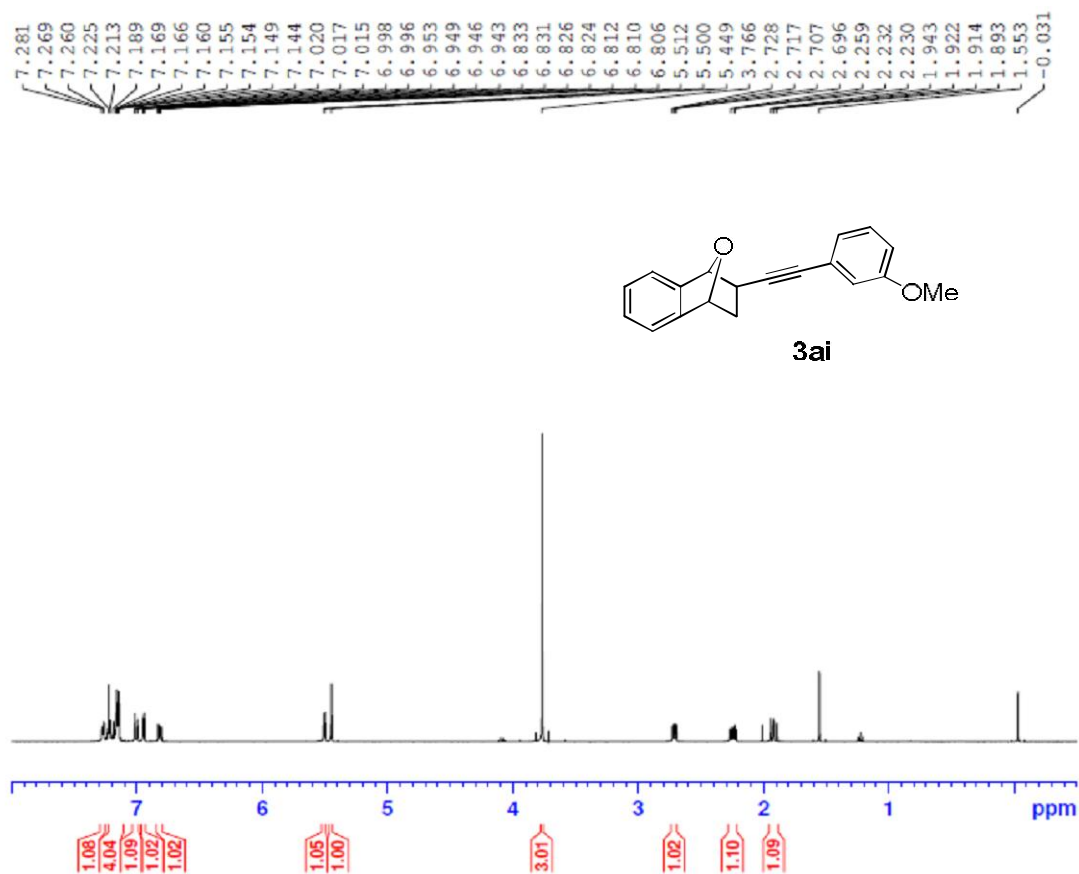


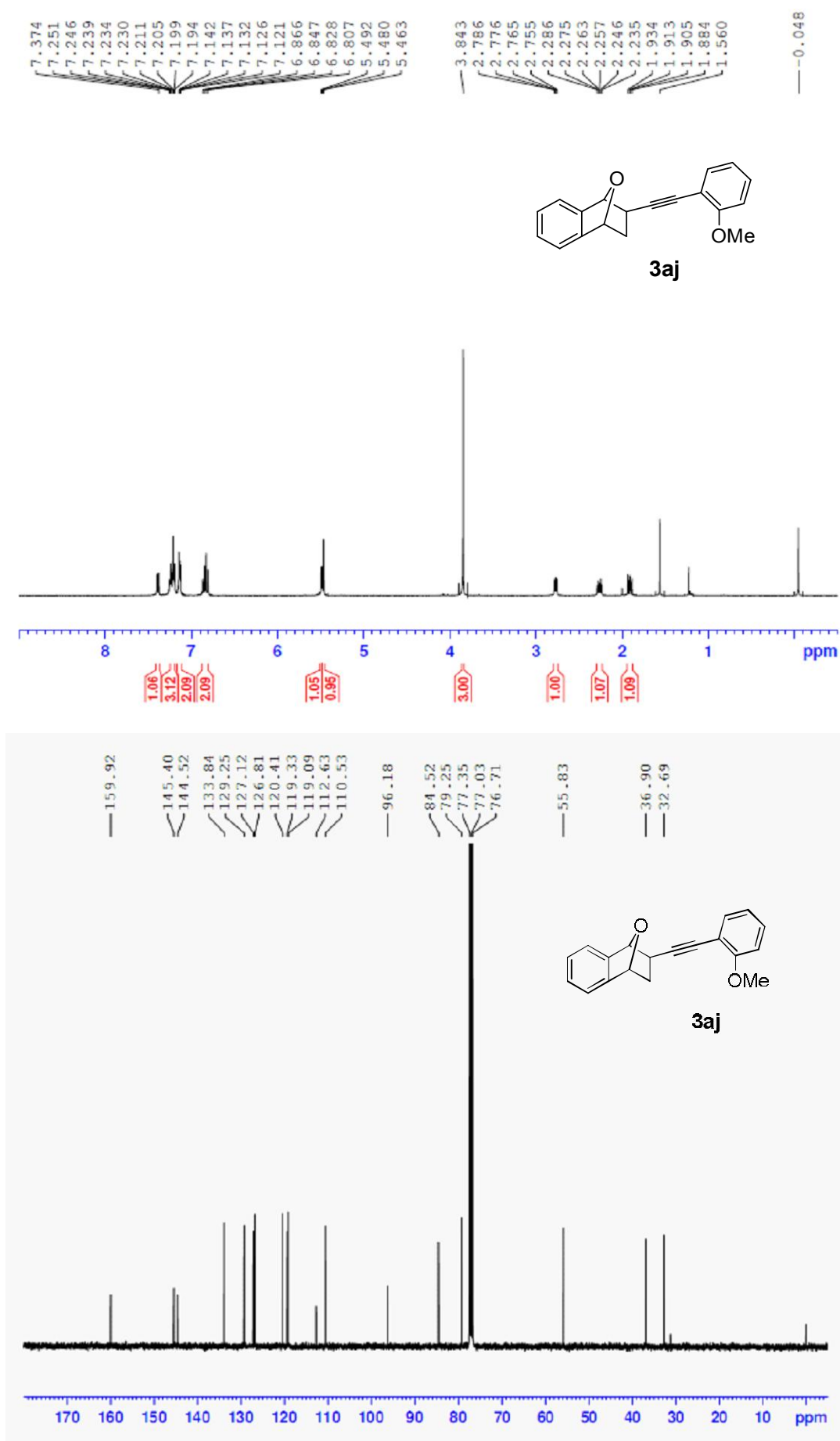


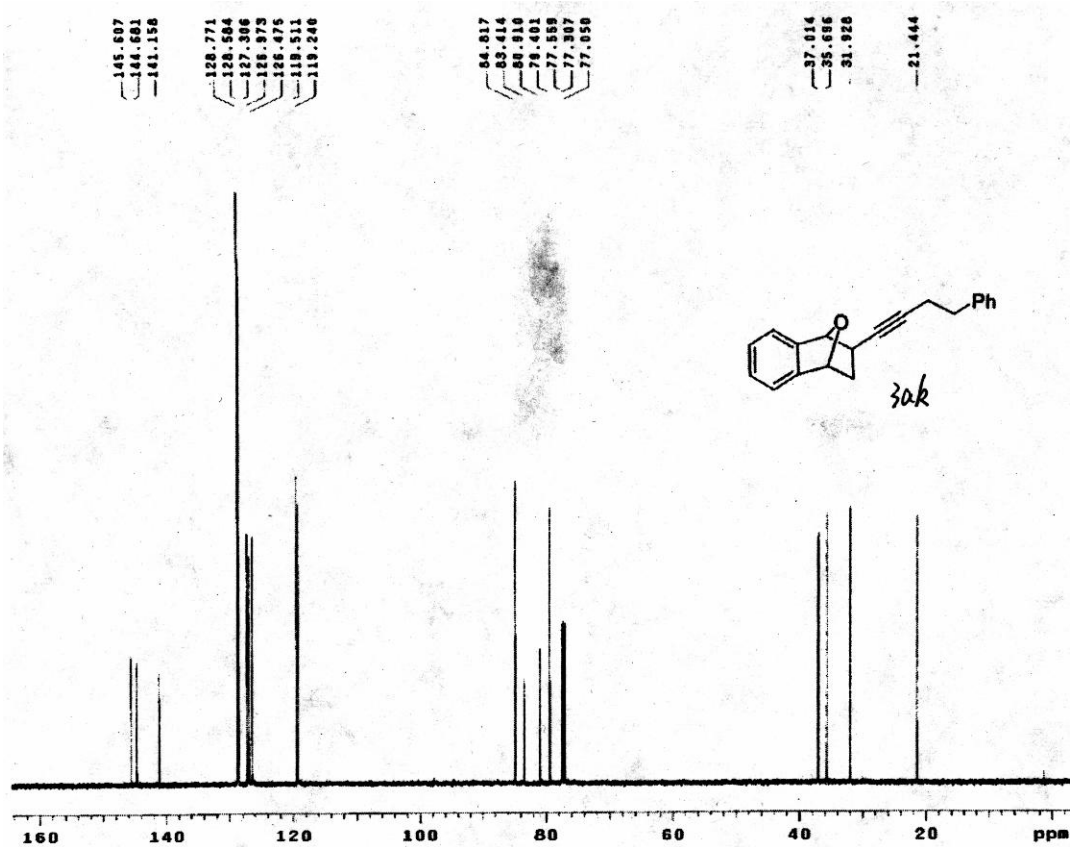
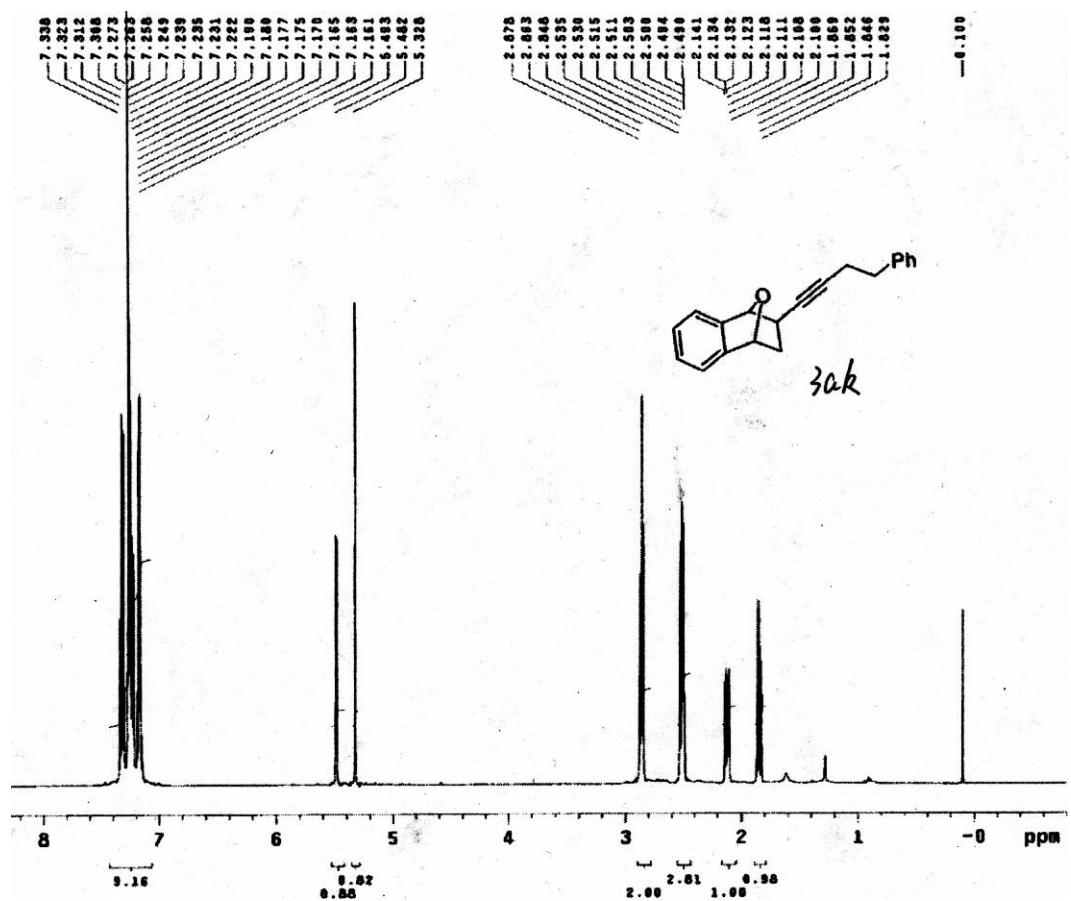


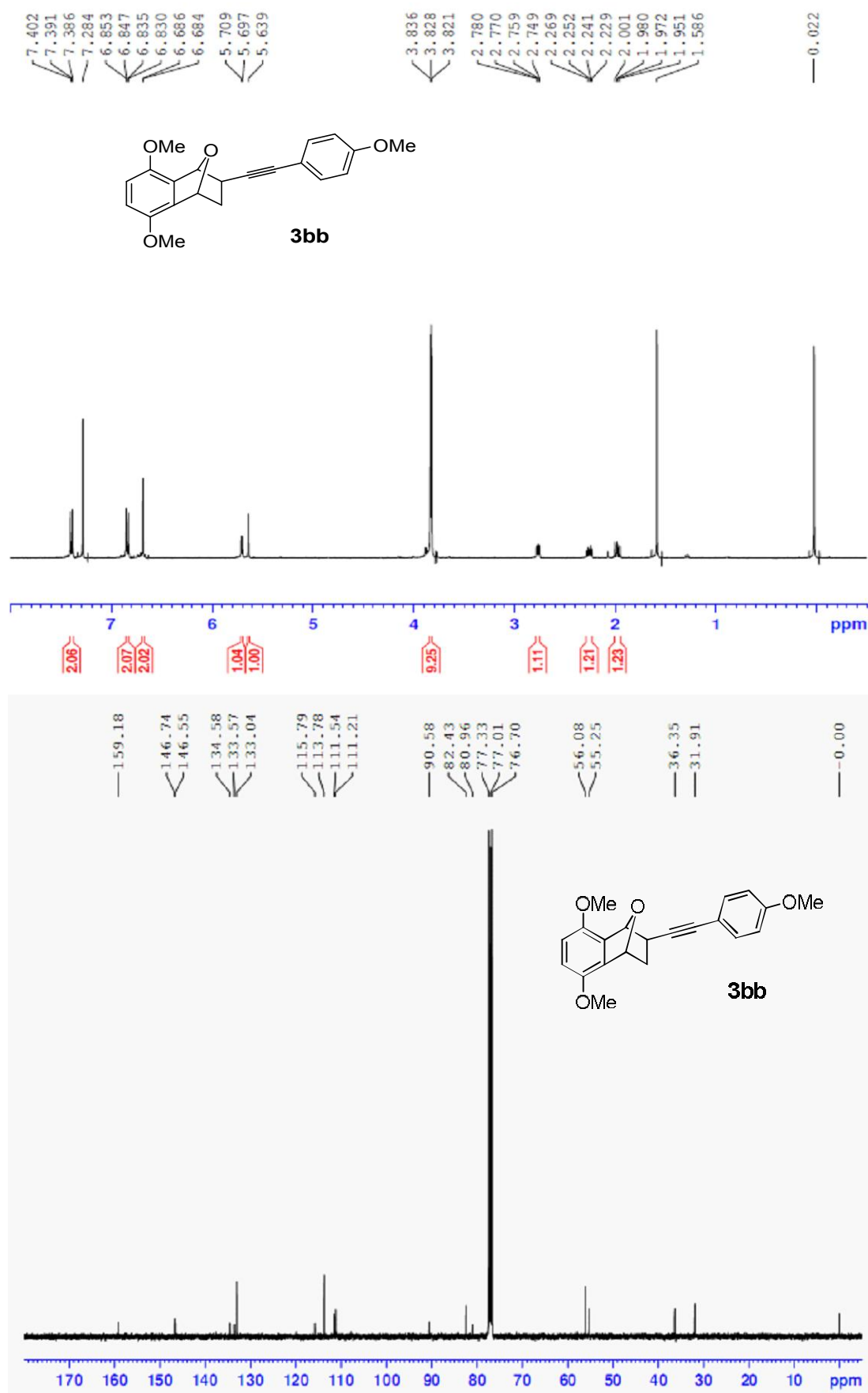


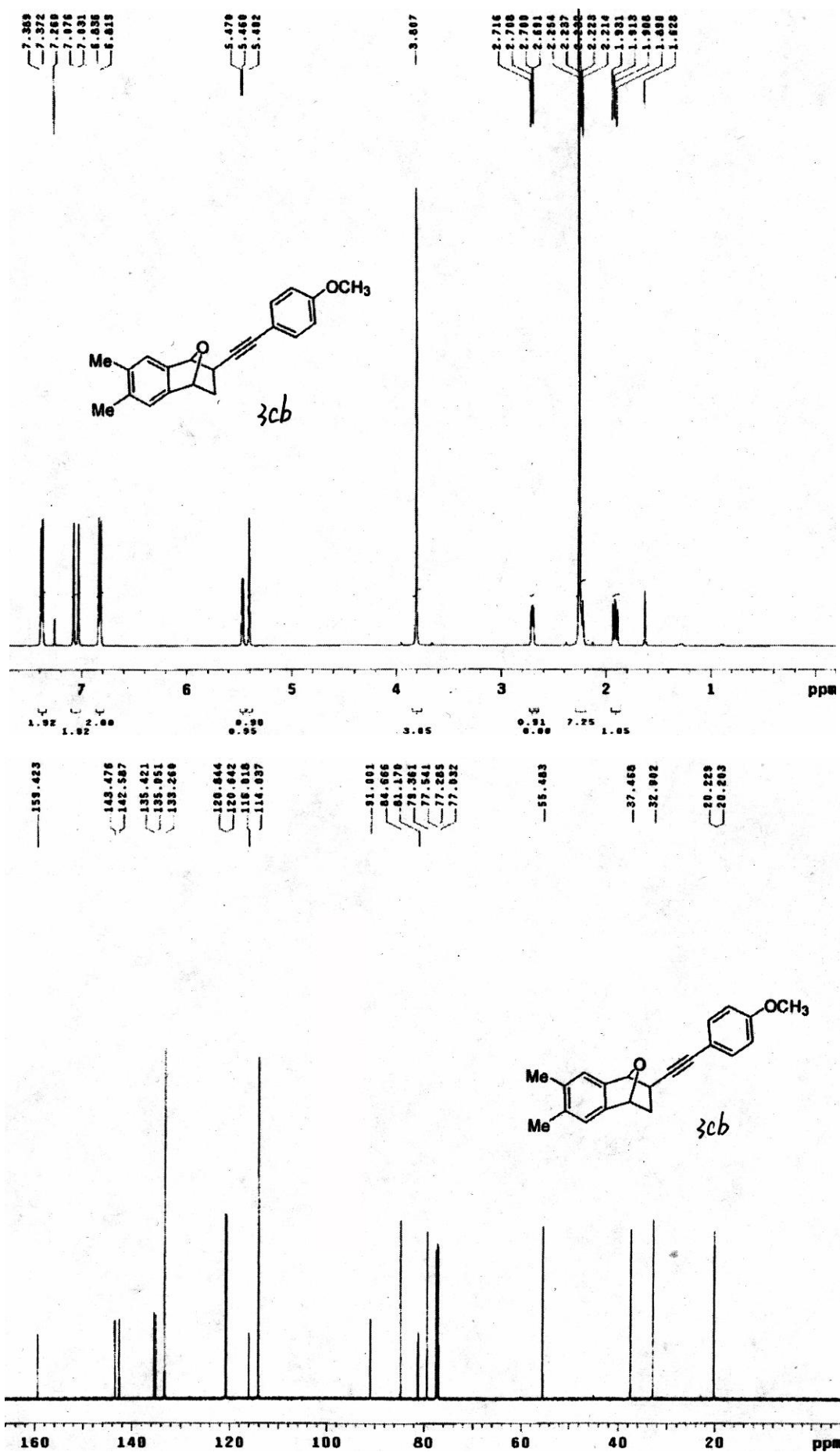


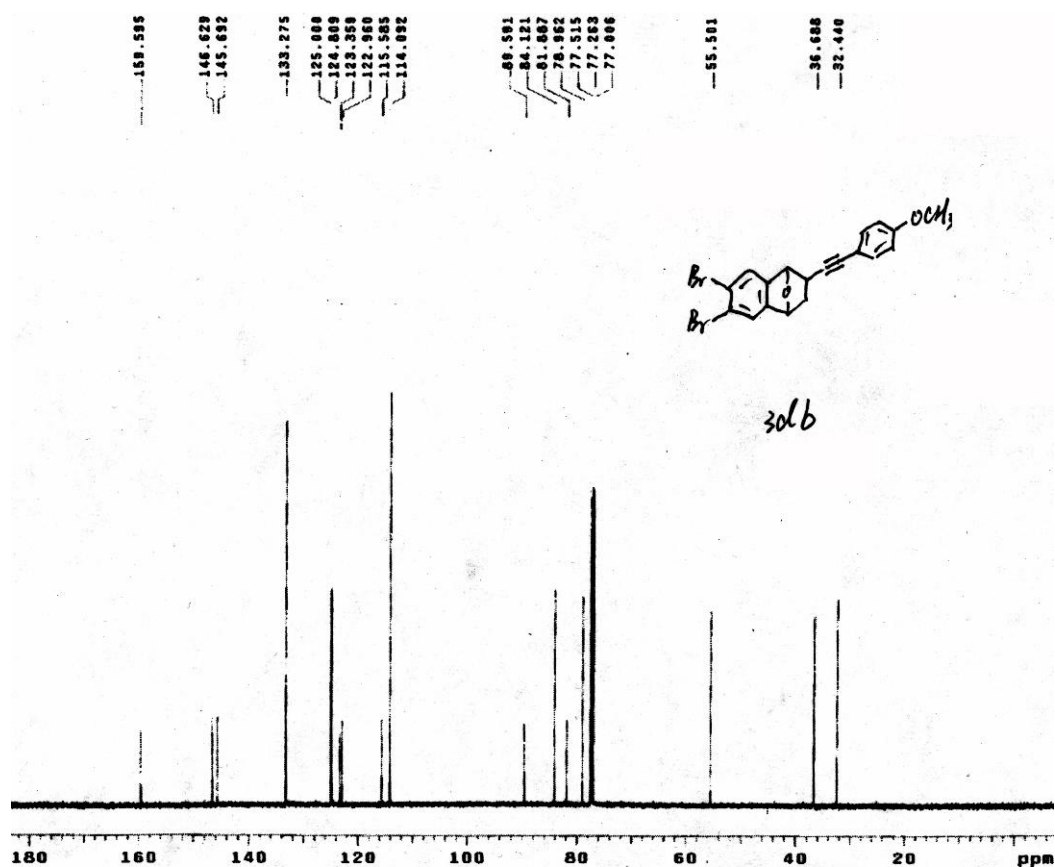
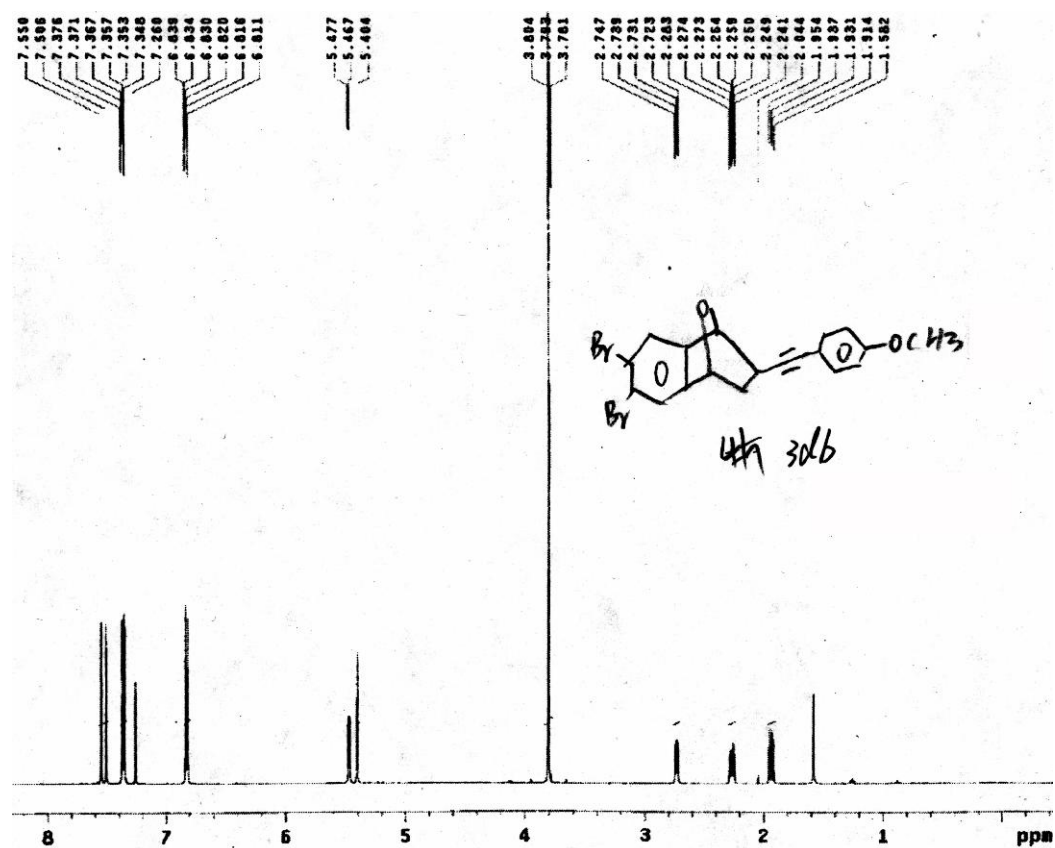


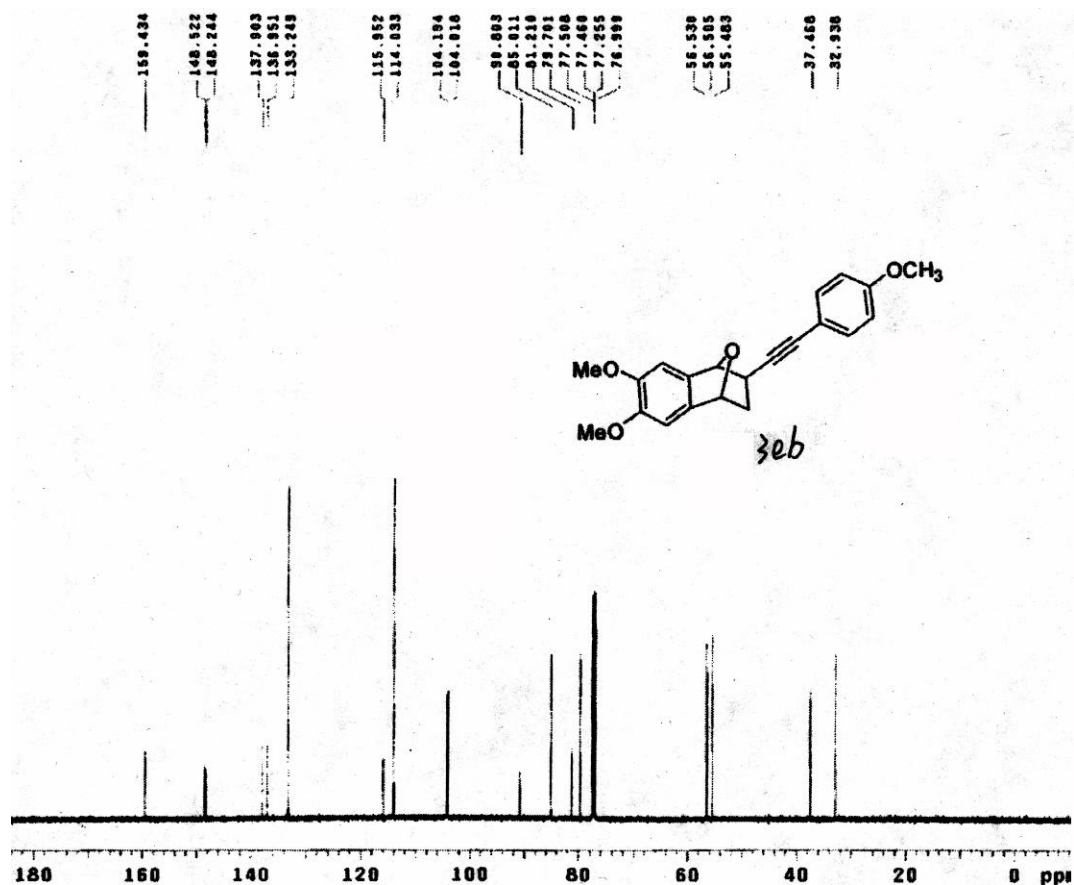
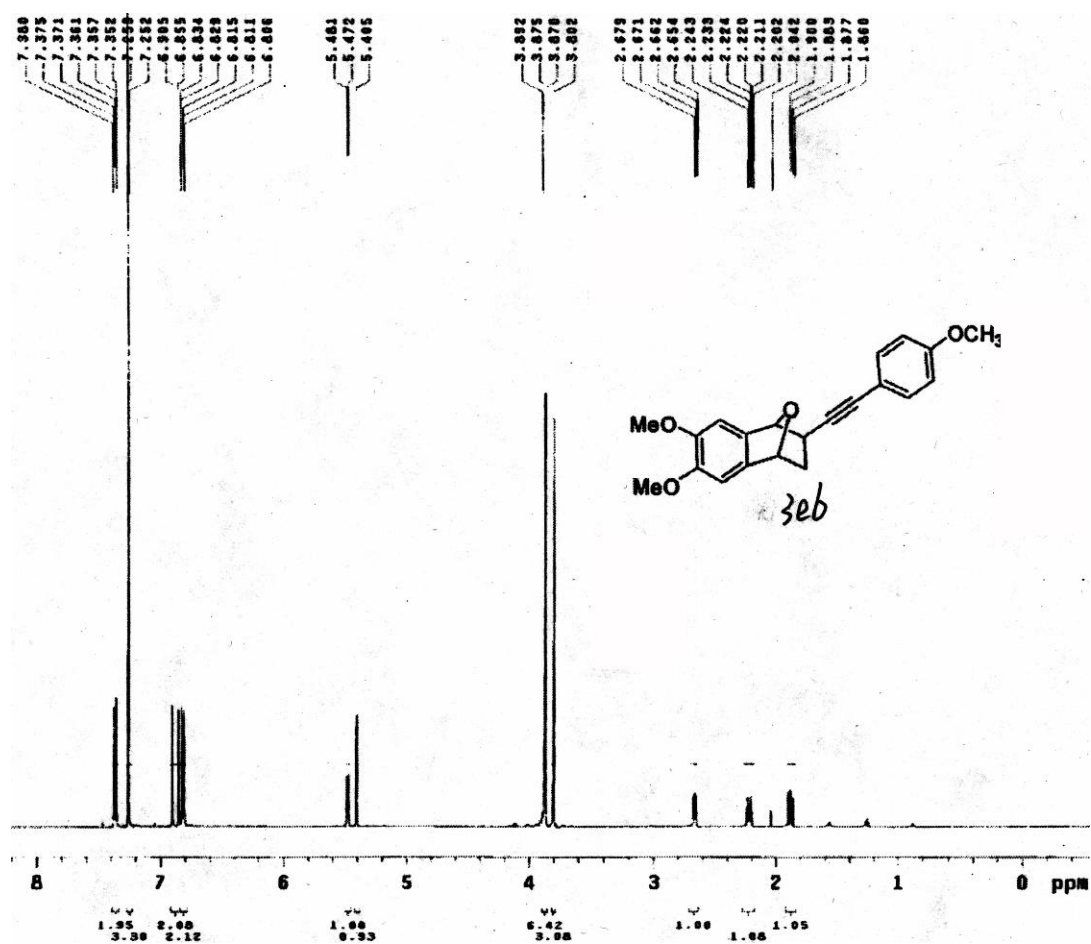


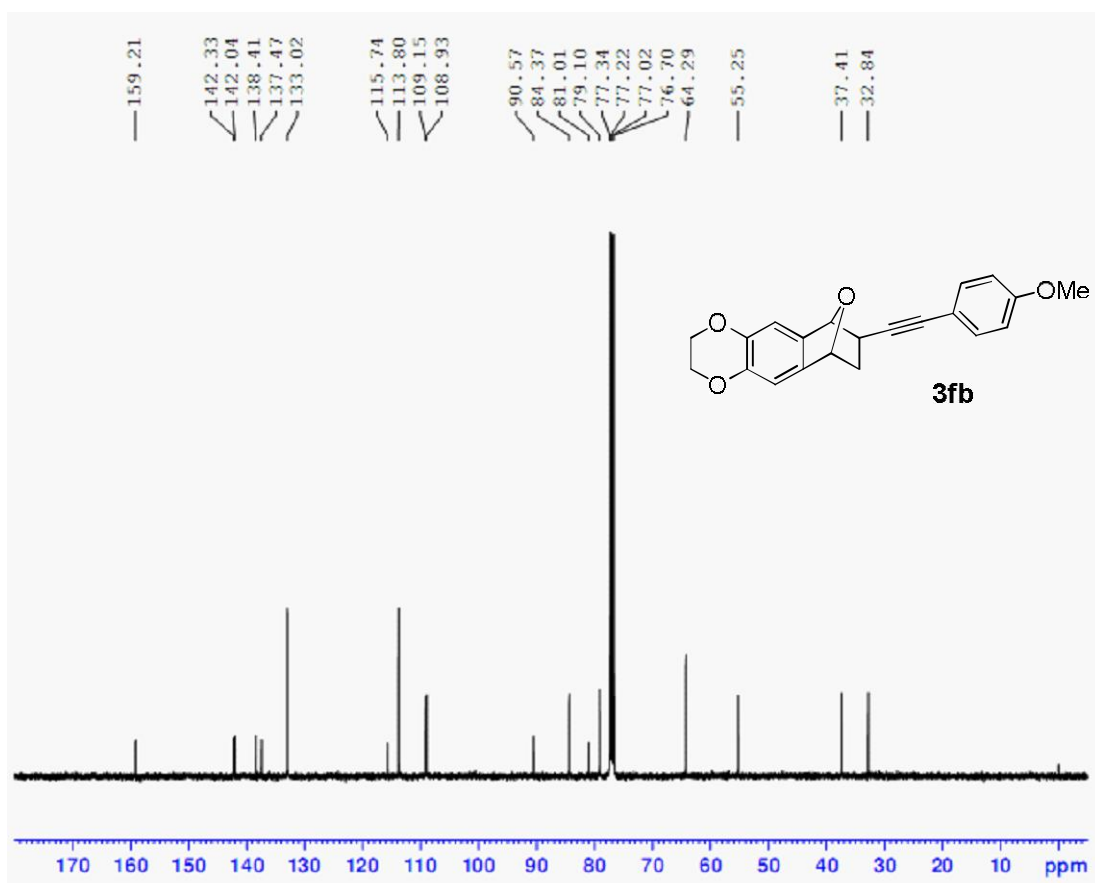
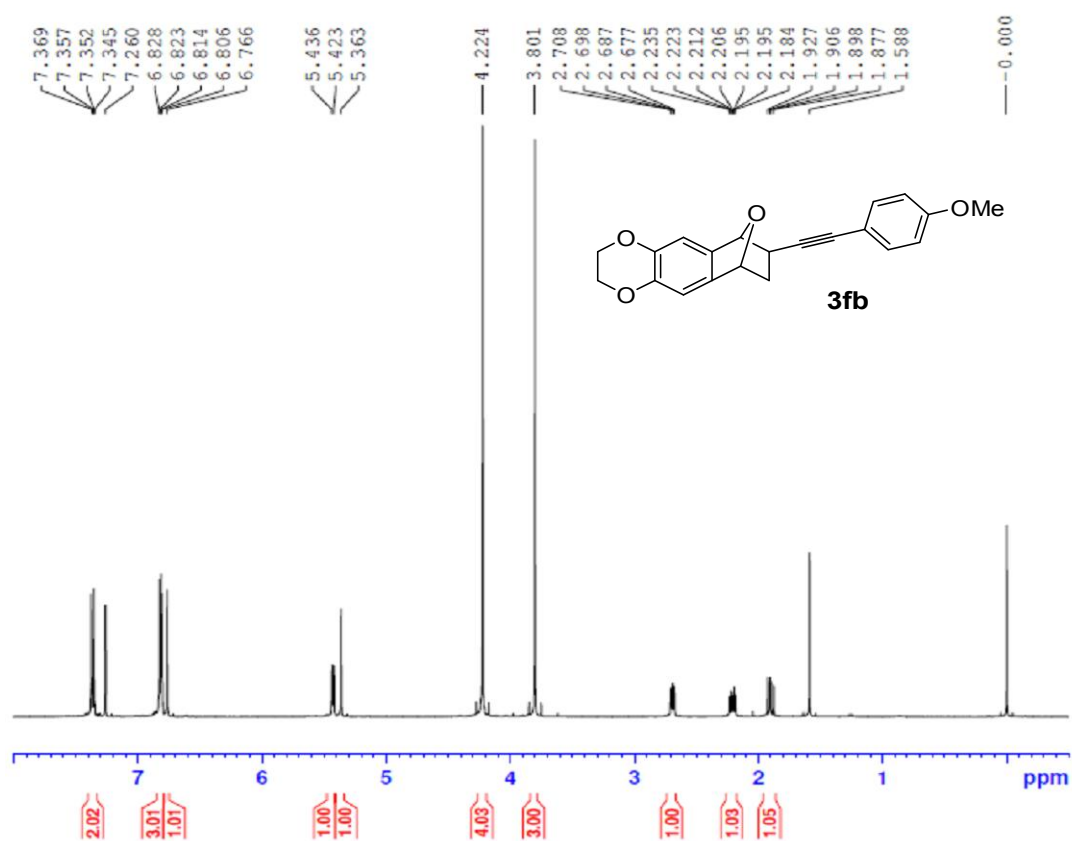


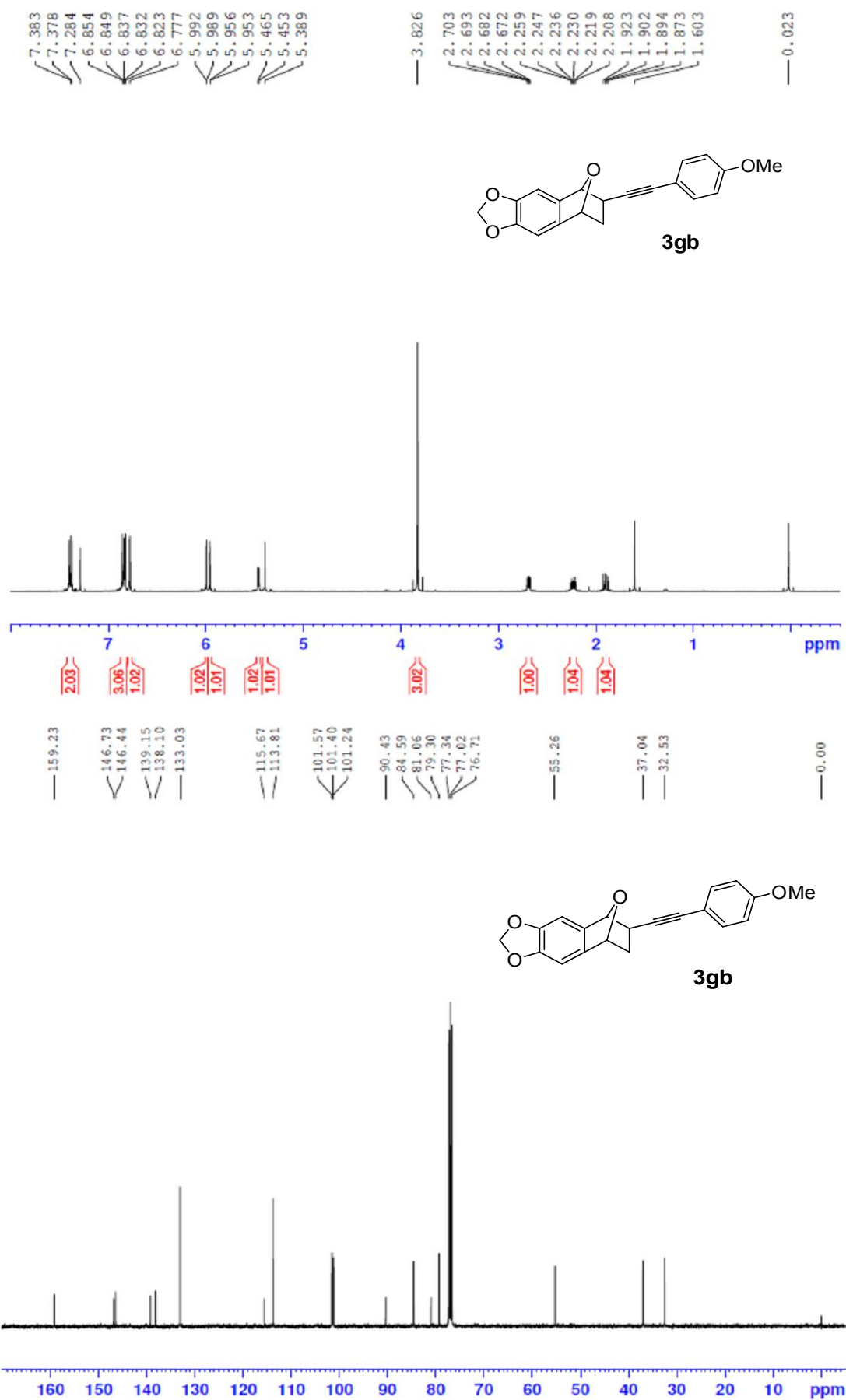




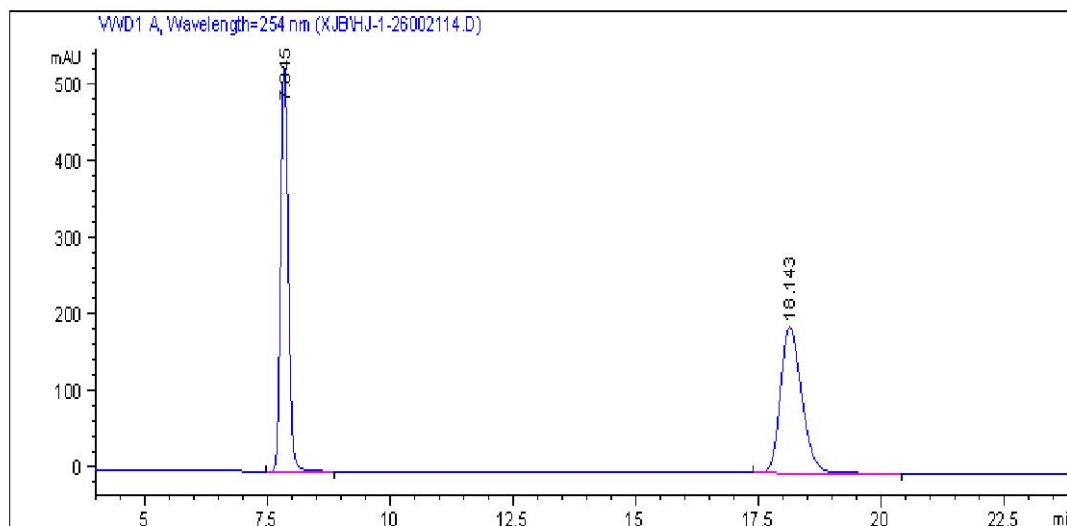
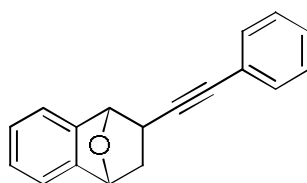




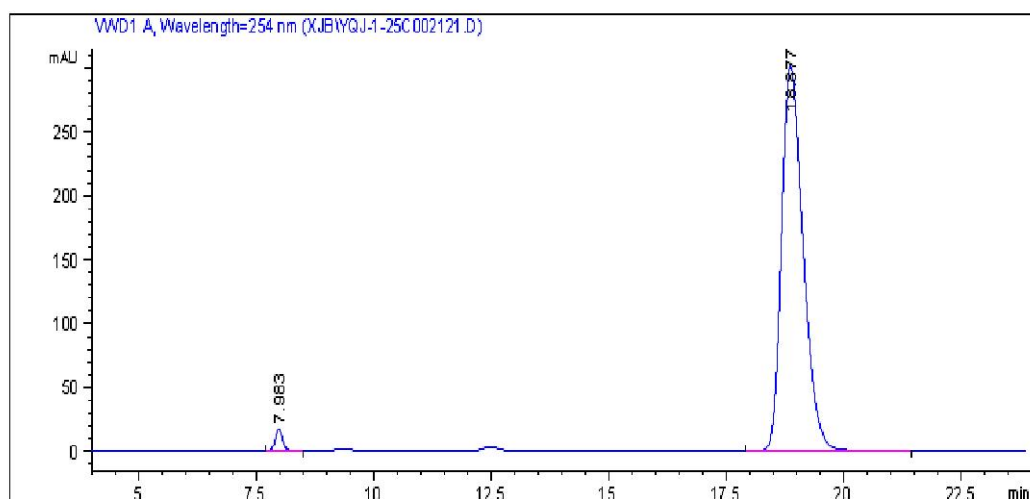




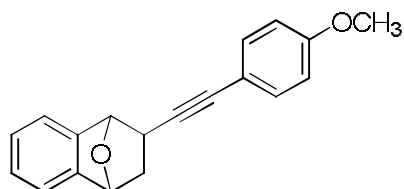
2. HPLC spectra of compounds 3aa-hp, 3bb-3gb



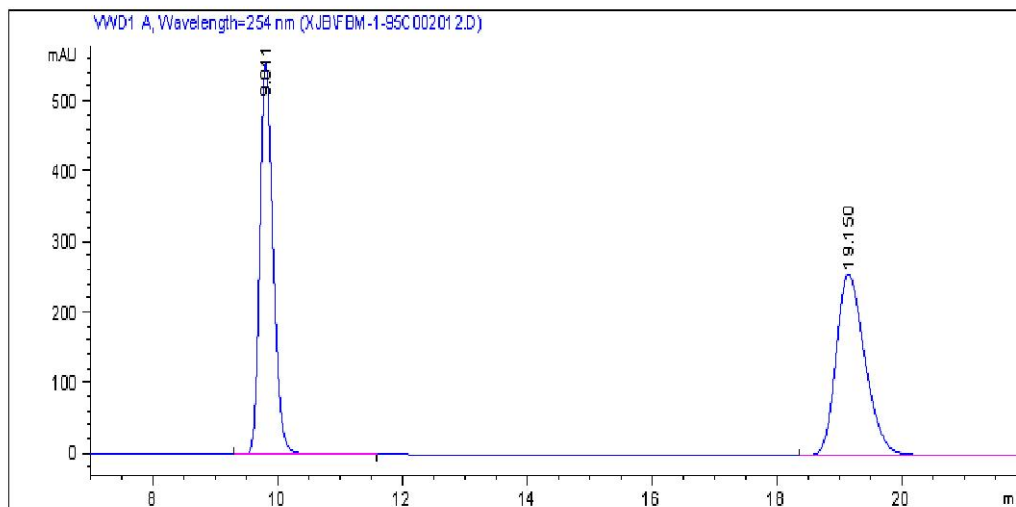
Peak #	RetTime [min]	Type	Width [min]	Area [mAU*s]	Height [mAU]	Area %
1	7.845	BB	0.1672	5717.16797	528.35010	49.8196
2	18.143	BB	0.4670	5758.58154	190.83932	50.1804



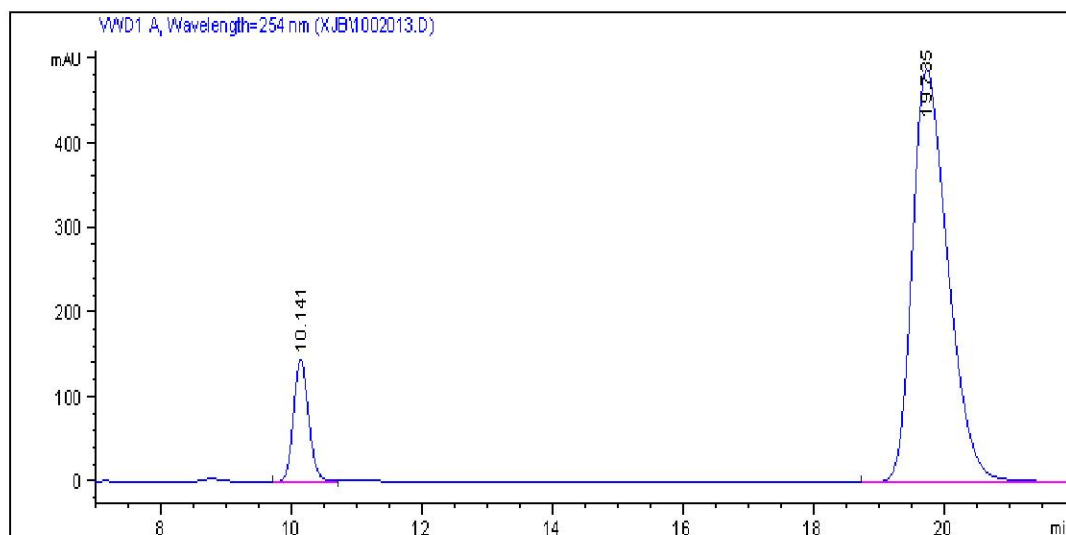
Peak #	RetTime [min]	Type	Width [min]	Area [mAU*s]	Height [mAU]	Area %
1	7.983	BB	0.1709	187.69511	16.99432	1.9135
2	18.877	BB	0.4928	9621.49414	301.08536	98.0865



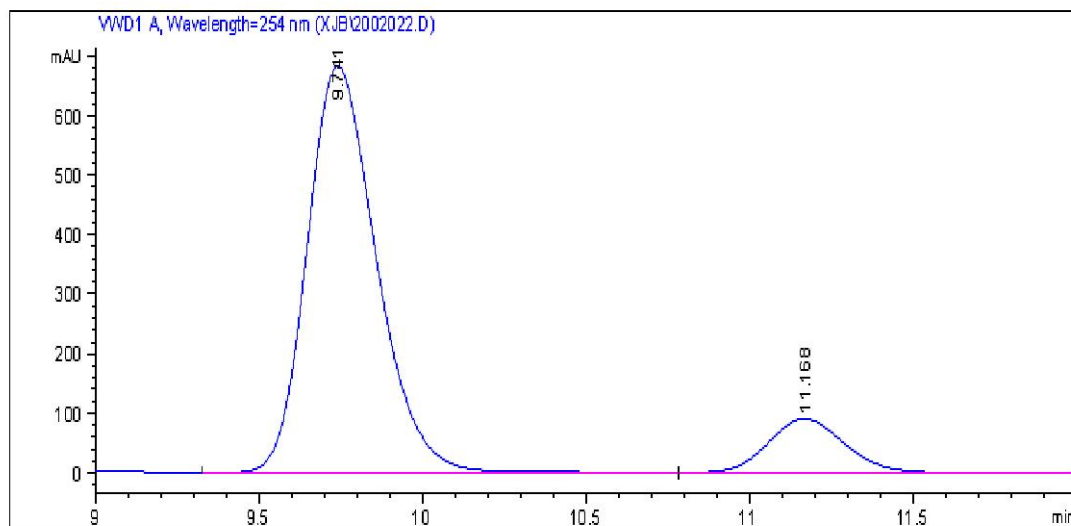
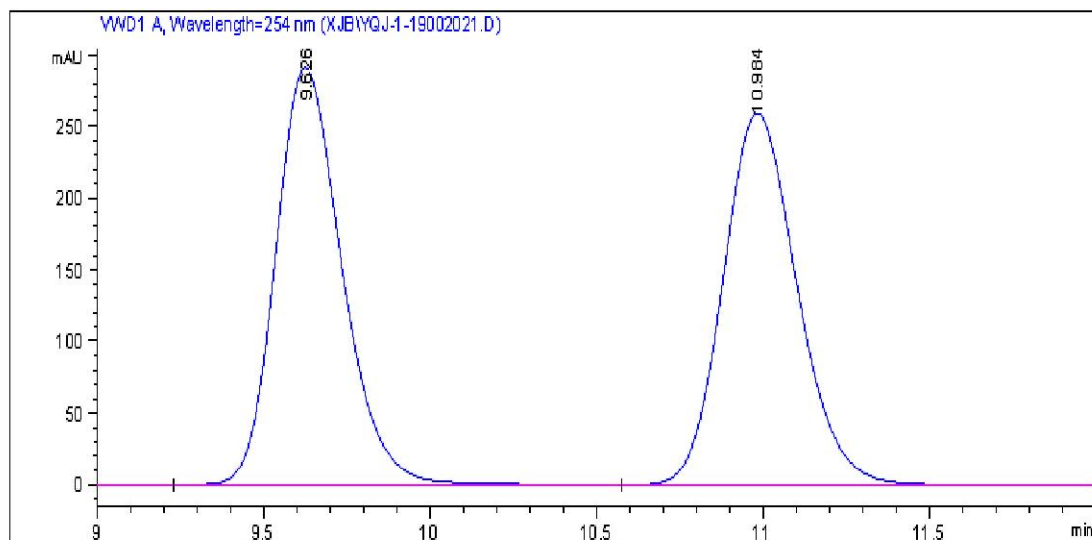
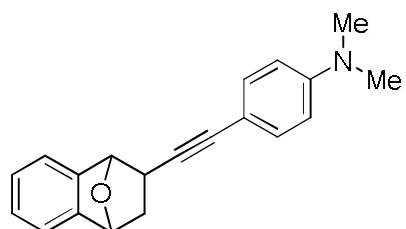
3ab

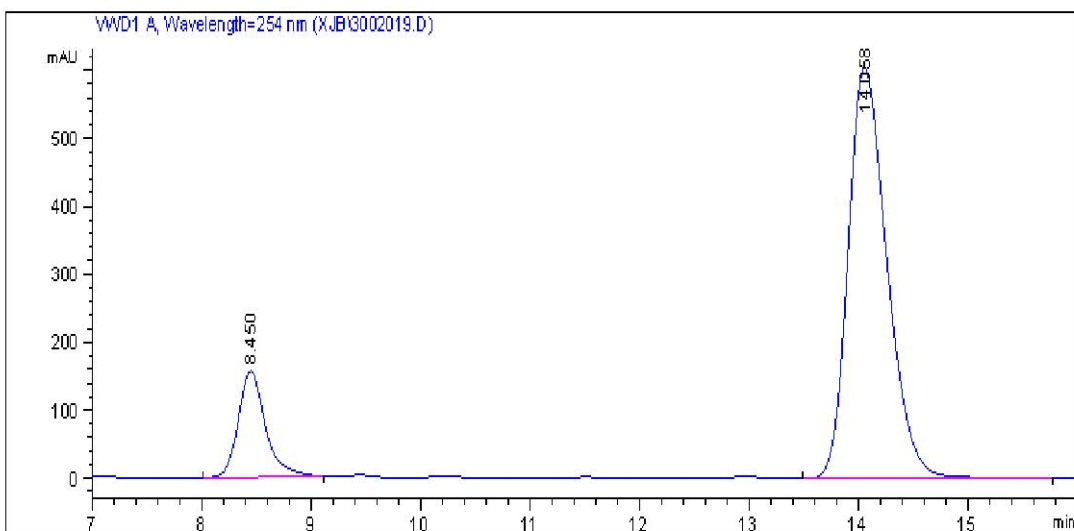
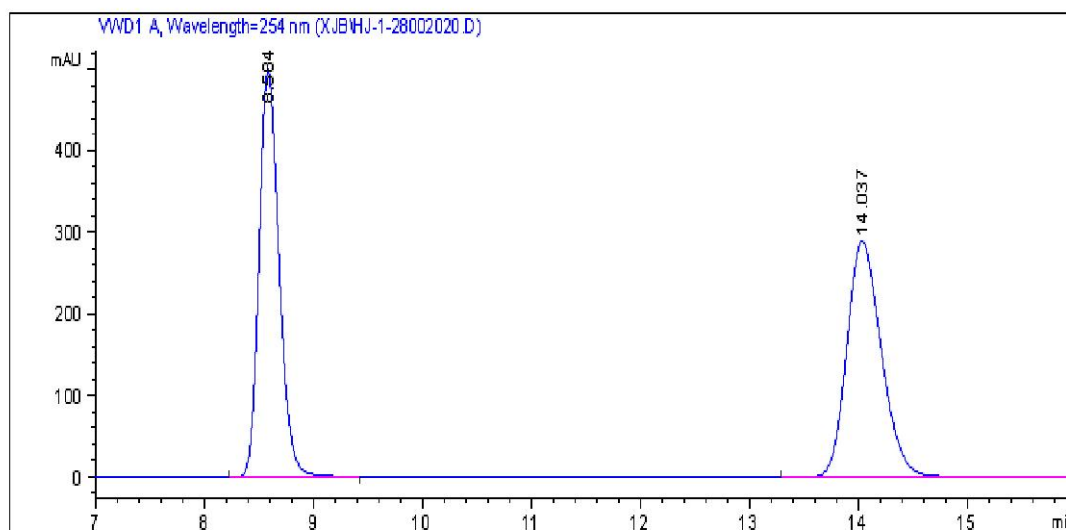
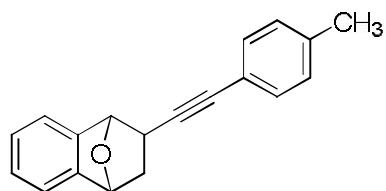


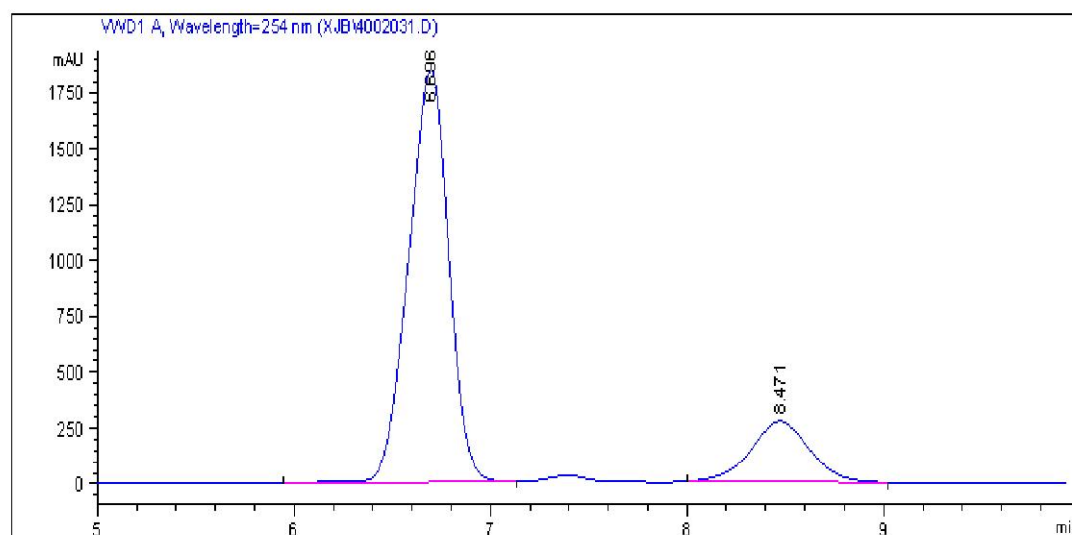
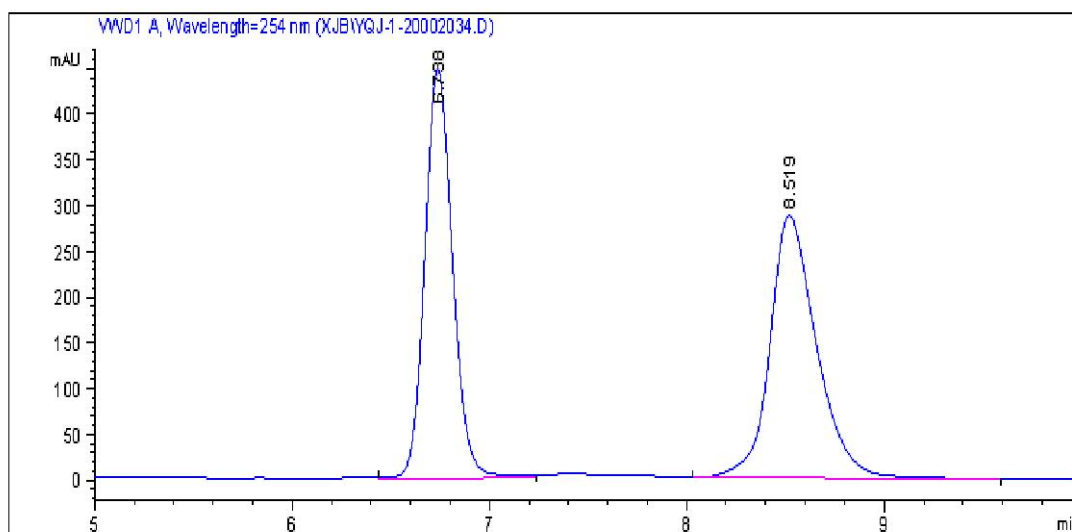
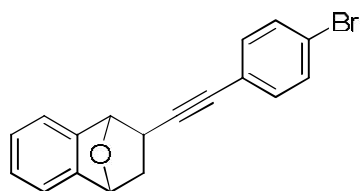
Peak #	RetTime [min]	Type	Width [min]	Area [mAU*s]	Height [mAU]	Area %
1	9.811	BB	0.2313	8280.49707	554.36389	50.0533
2	19.150	BBA	0.4965	8262.87695	256.73358	49.9467

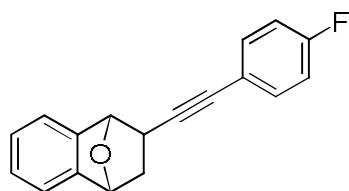


Peak #	RetTime [min]	Type	Width [min]	Area [mAU*s]	Height [mAU]	Area %
1	10.141	BV	0.2466	2308.75732	145.11409	11.0824
2	19.735	BB	0.5796	1.85239e4	488.23526	88.9176

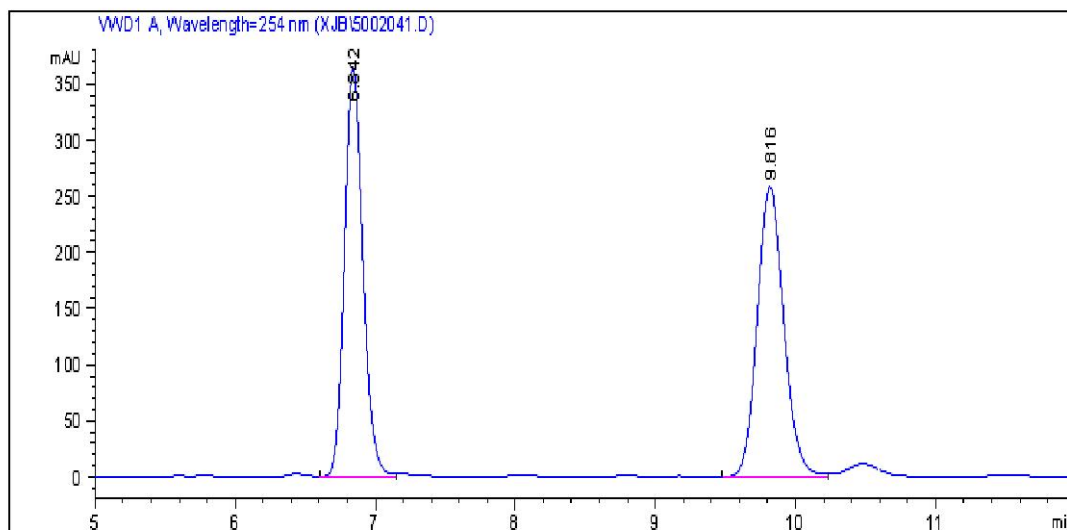




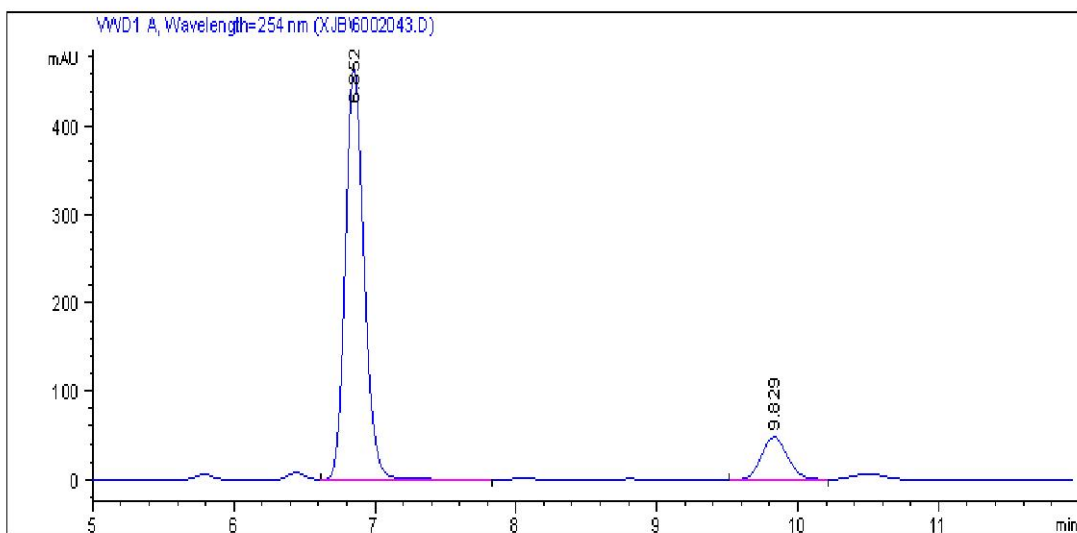




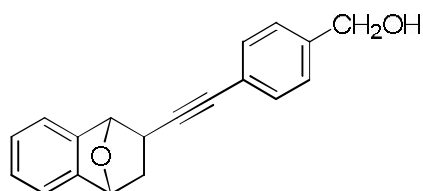
3af



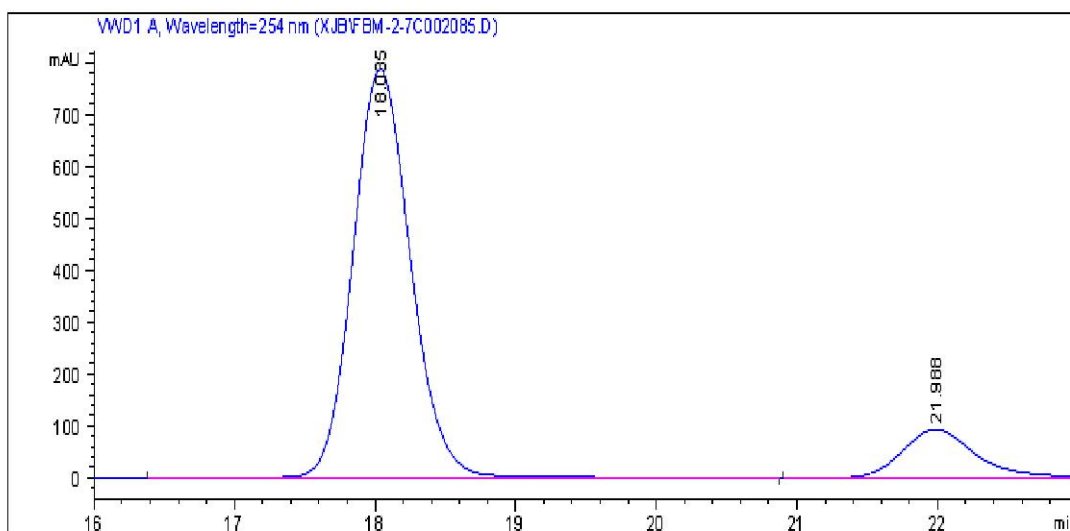
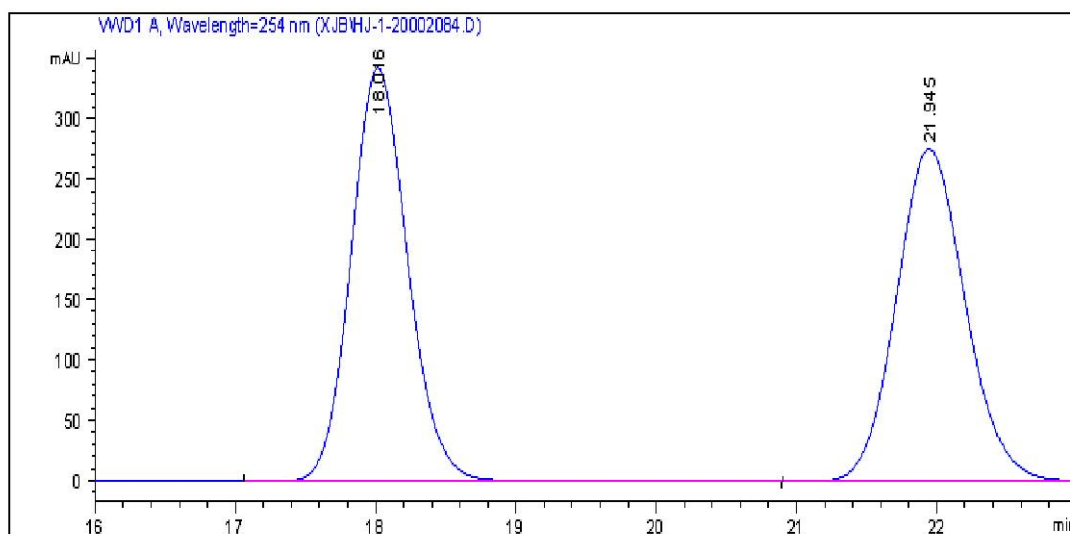
Peak #	RetTime [min]	Type	Width [min]	Area [mAU*s]	Height [mAU]	Area %
1	6.842	VV	0.1416	3363.22461	364.73386	49.7180
2	9.816	BV	0.2036	3401.38330	258.27783	50.2820

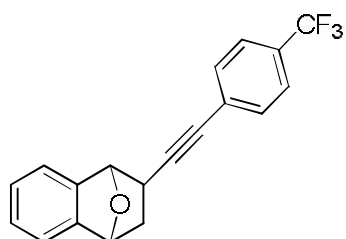


Peak #	RetTime [min]	Type	Width [min]	Area [mAU*s]	Height [mAU]	Area %
1	6.852	VB	0.1428	4341.62500	465.70303	87.4648
2	9.829	BV	0.2024	622.22711	47.64800	12.5352

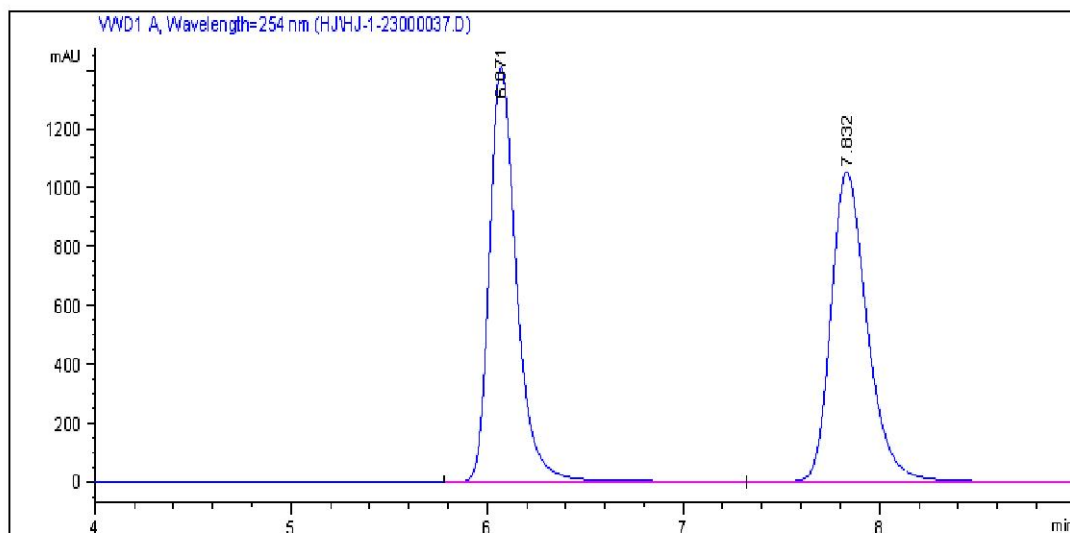


3ag

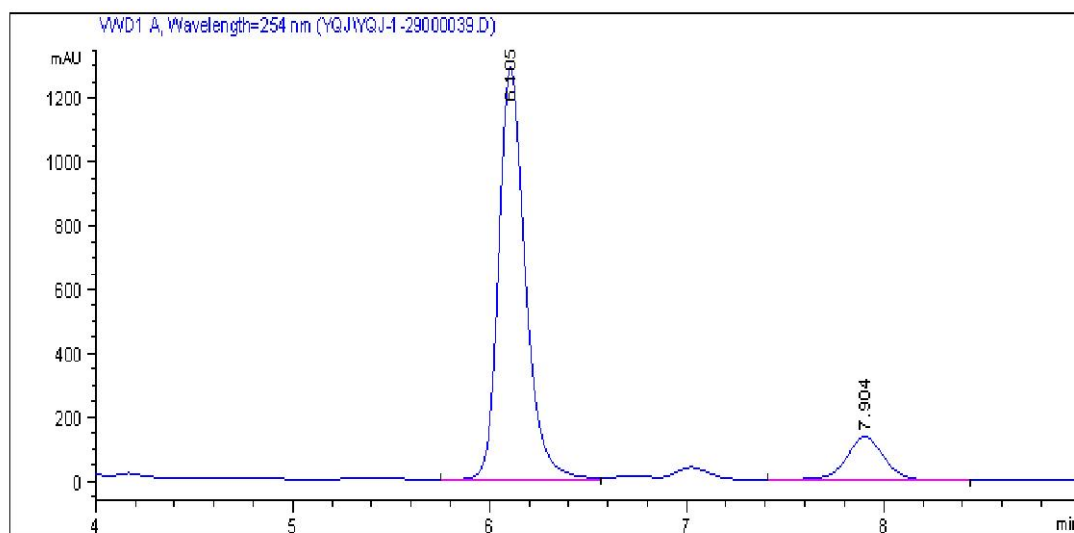




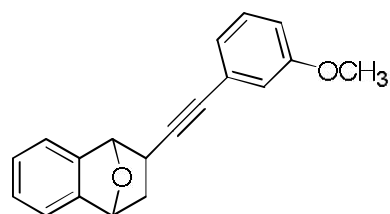
3ah



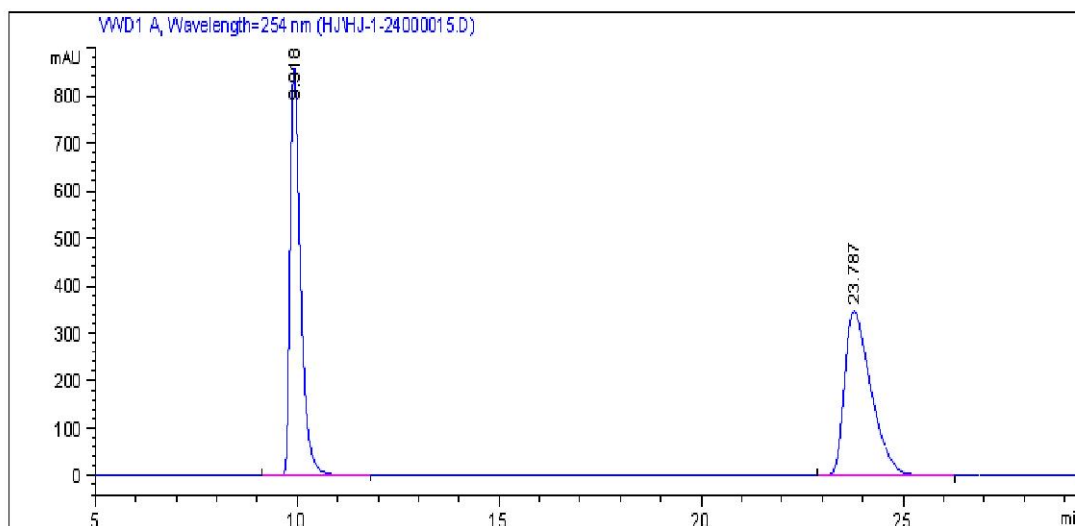
Peak #	RetTime [min]	Type	Width [min]	Area [mAU*s]	Height [mAU]	Area %
1	6.071	BB	0.1463	1.36057e4	1413.57043	50.0030
2	7.832	BB	0.1976	1.36040e4	1053.80591	49.9970



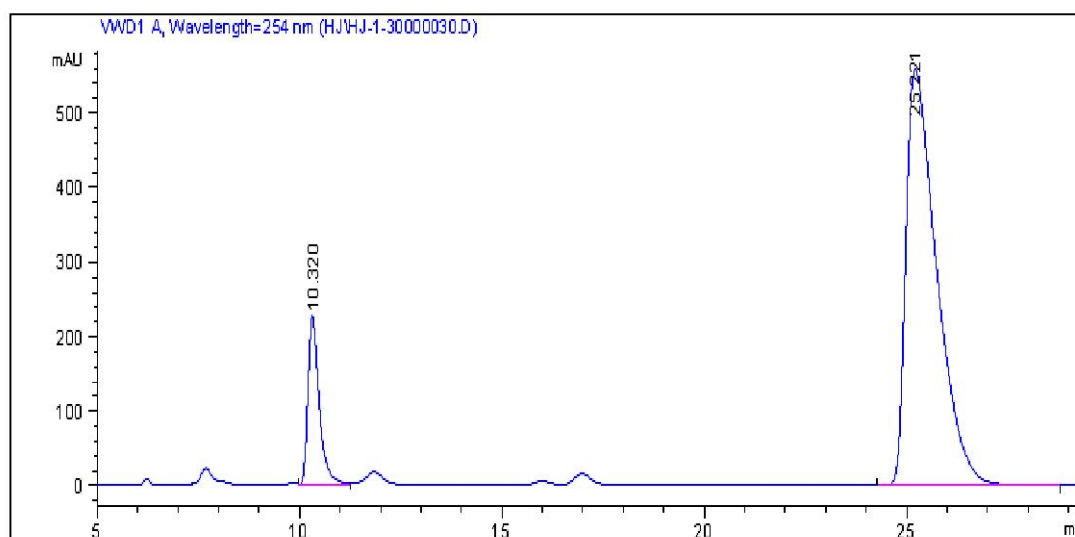
Peak #	RetTime [min]	Type	Width [min]	Area [mAU*s]	Height [mAU]	Area %
1	6.105	BV	0.1443	1.21829e4	1288.16125	86.8522
2	7.904	BB	0.2028	1844.27026	137.18994	13.1478



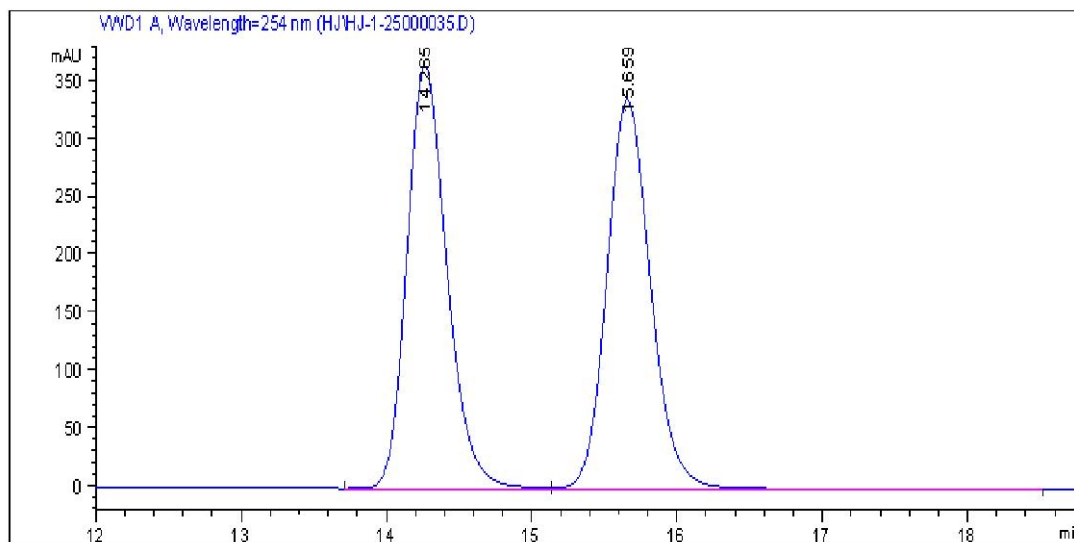
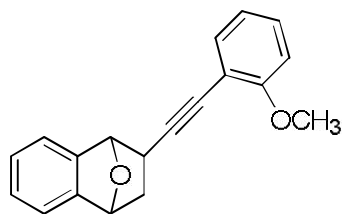
3ai



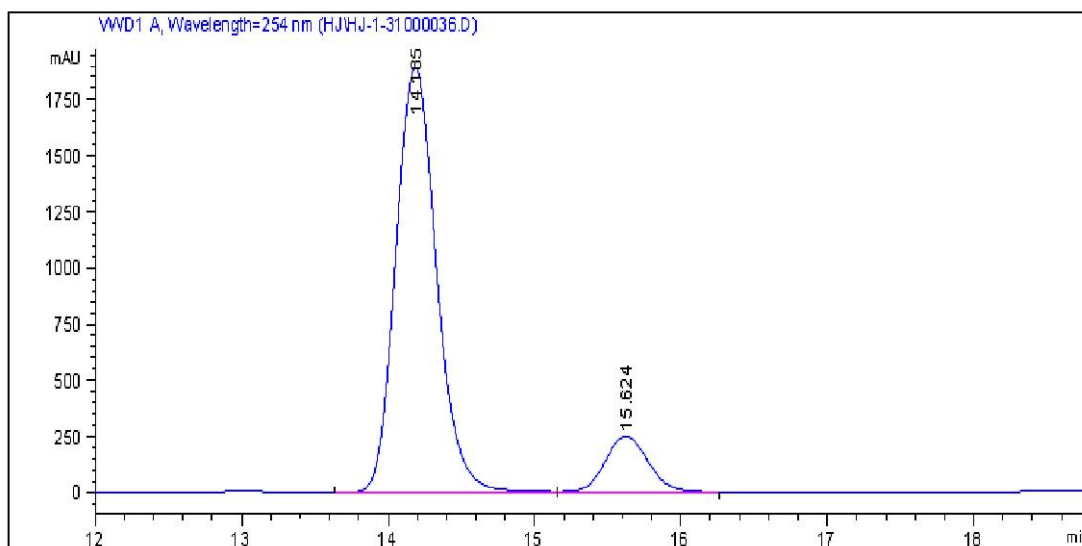
Peak #	RetTime [min]	Type	Width [min]	Area [mAU*s]	Height [mAU]	Area %
1	9.918	BB	0.2706	1.54450e4	859.70258	49.4500
2	23.787	BB	0.6925	1.57885e4	345.93015	50.5500



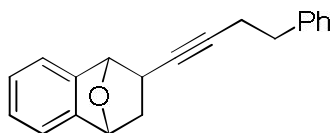
Peak #	RetTime [min]	Type	Width [min]	Area [mAU*s]	Height [mAU]	Area %
1	10.320	VV	0.2952	4483.04639	227.17894	13.1806
2	25.221	BB	0.7957	2.95294e4	557.77087	86.8194



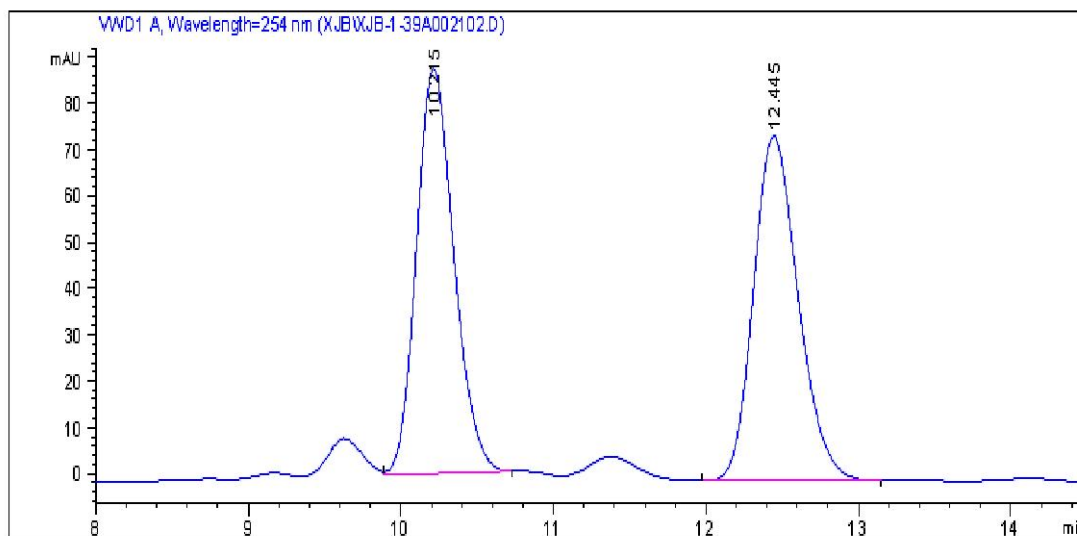
Peak #	RetTime [min]	Type	Width [min]	Area [mAU*s]	Height [mAU]	Area %
1	14.265	BV	0.2957	6989.18945	364.56241	49.9164
2	15.659	VB	0.3224	7012.59766	336.16391	50.0836



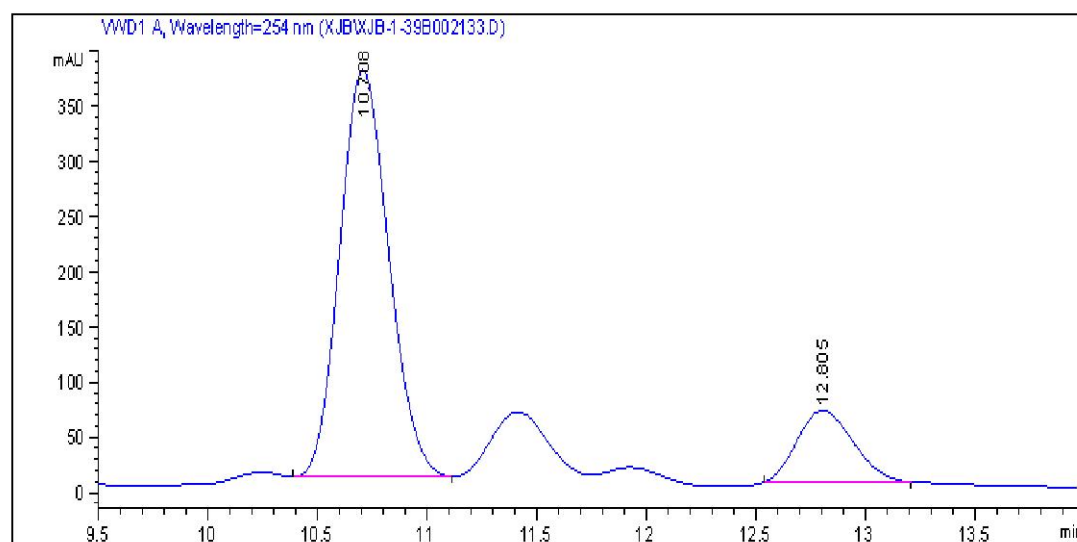
Peak #	RetTime [min]	Type	Width [min]	Area [mAU*s]	Height [mAU]	Area %
1	14.185	BV	0.3025	3.66913e4	1890.22559	87.6327
2	15.624	VBA	0.3189	5178.10840	251.79834	12.3673



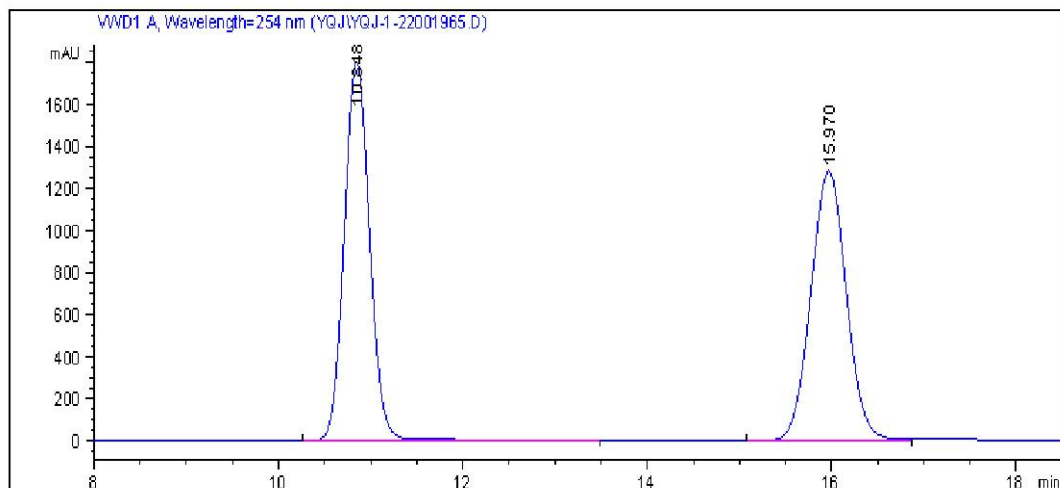
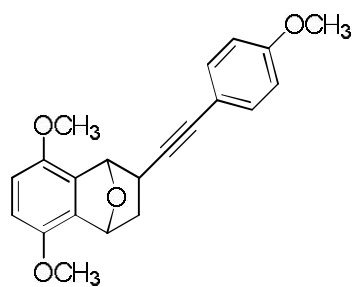
3ak



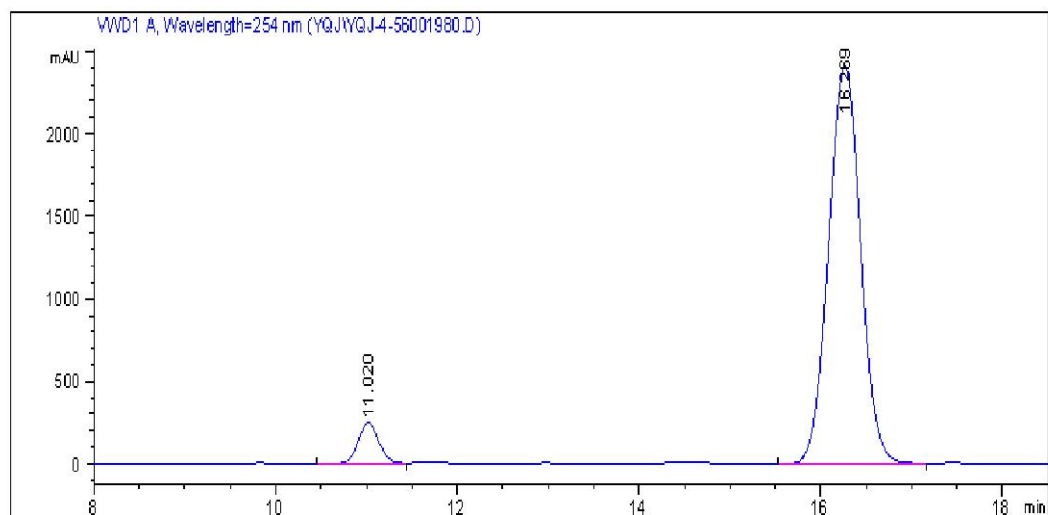
Peak #	RetTime [min]	Type	Width [min]	Area [mAU*s]	Height [mAU]	Area %
1	10.215	VB	0.2635	1496.71082	87.52846	49.5586
2	12.445	BB	0.3145	1523.37061	74.51788	50.4414



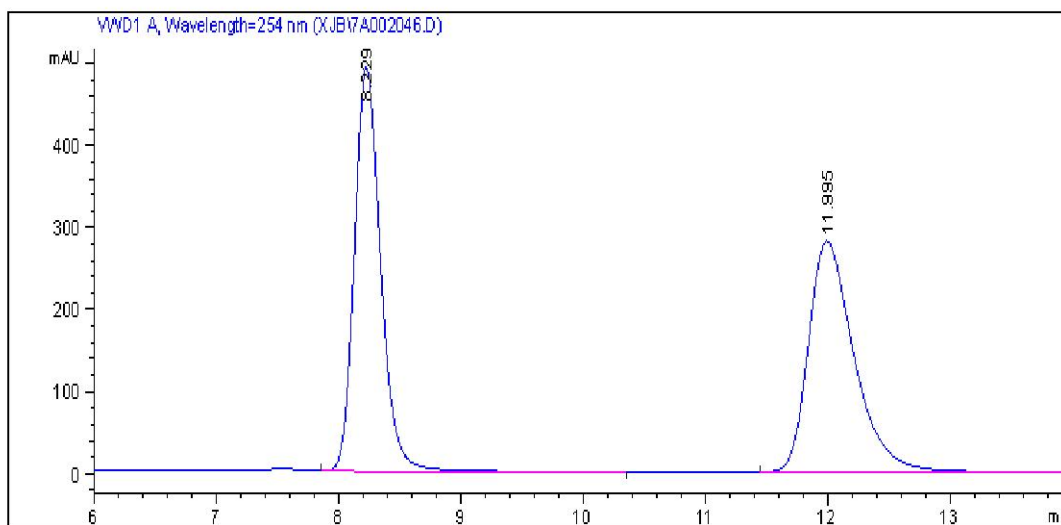
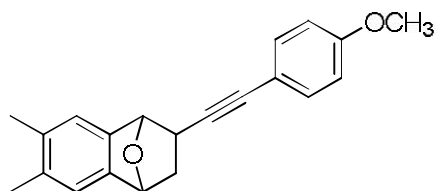
Peak #	RetTime [min]	Type	Width [min]	Area [mAU*s]	Height [mAU]	Area %
1	10.708	BB	0.2422	5708.27441	367.56067	83.3799
2	12.805	BBA	0.2793	1137.82715	64.33704	16.6201



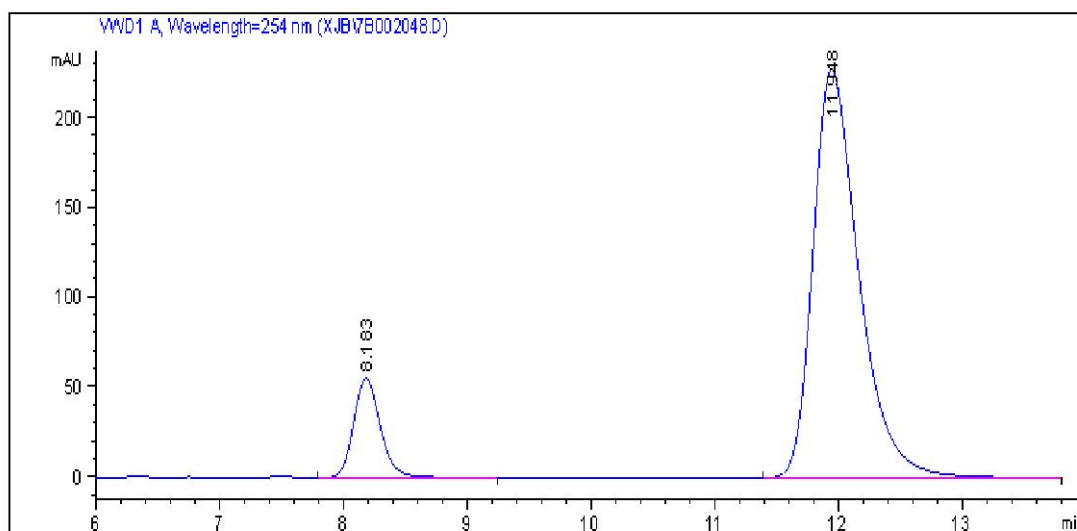
Peak #	RetTime [min]	Type	Width [min]	Area [mAU*s]	Height [mAU]	Area %
1	10.848	BB	0.2983	3.44966e4	1801.99585	50.0788
2	15.970	BV	0.4166	3.43881e4	1283.54431	49.9212



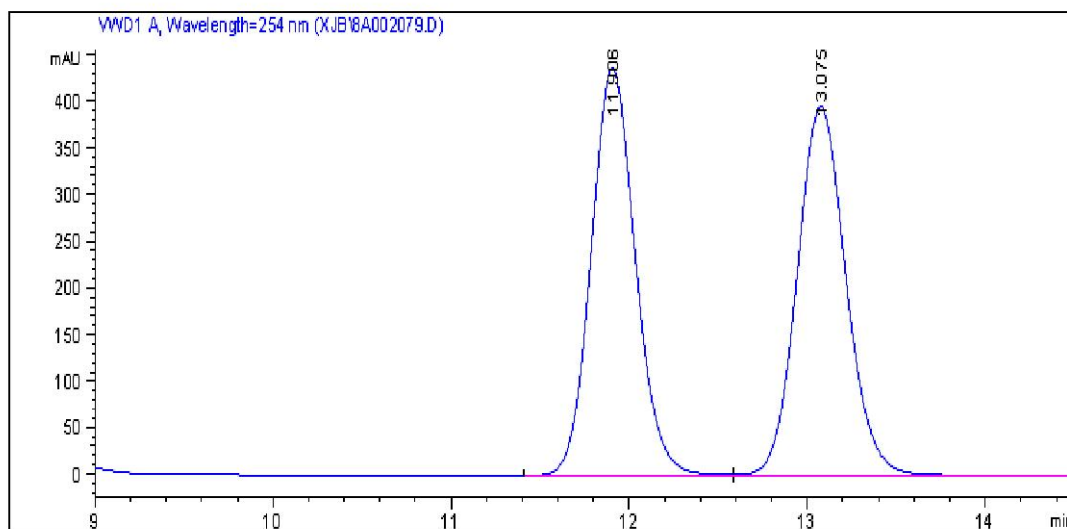
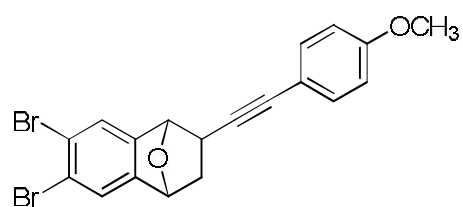
Peak #	RetTime [min]	Type	Width [min]	Area [mAU*s]	Height [mAU]	Area %
1	11.020	BV	0.2473	3947.83203	245.93077	6.2447
2	16.269	BV	0.3842	5.92715e4	2407.95898	93.7553



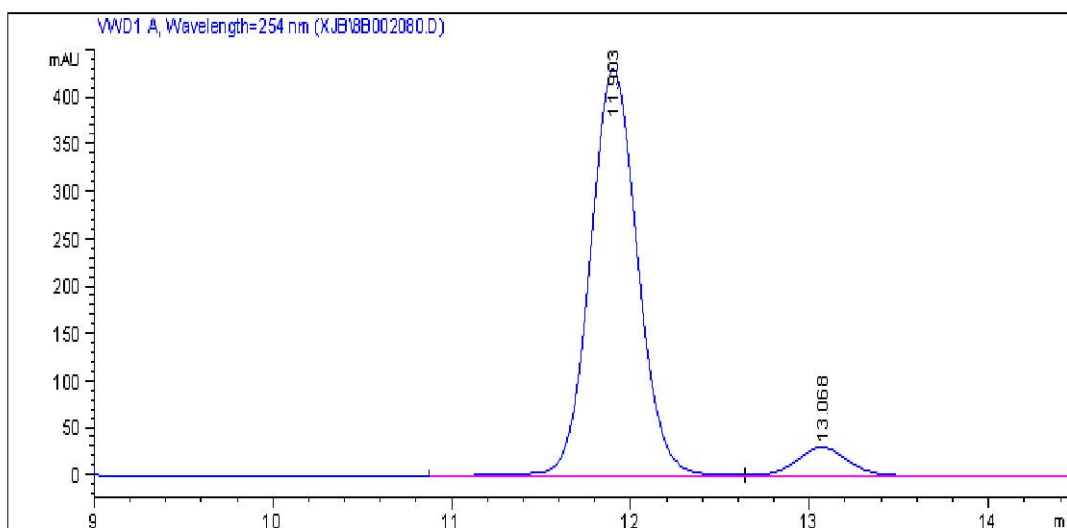
Peak #	RetTime [min]	Type	Width [min]	Area [mAU*s]	Height [mAU]	Area %
1	8.229	VB	0.2290	7341.22803	492.16089	50.0534
2	11.995	VBA	0.3943	7325.55078	281.79889	49.9466



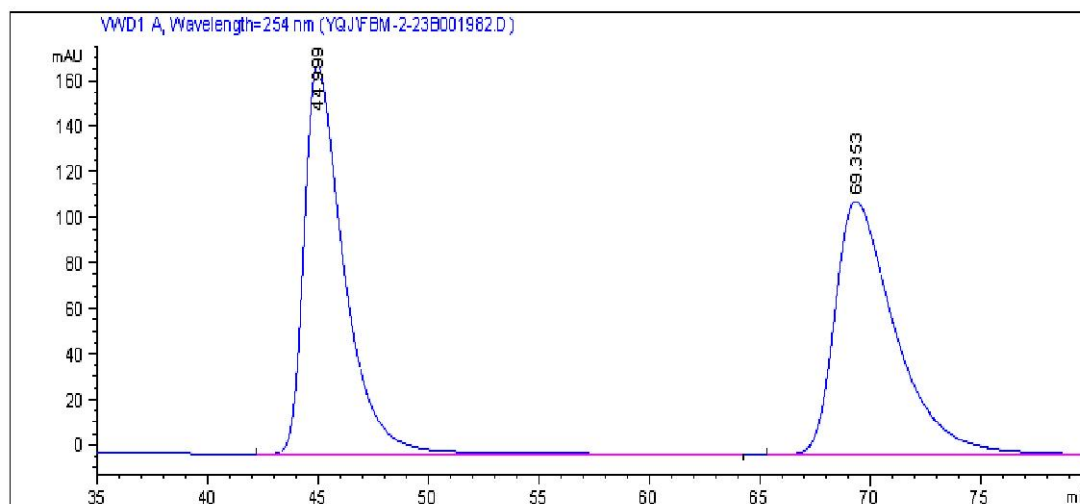
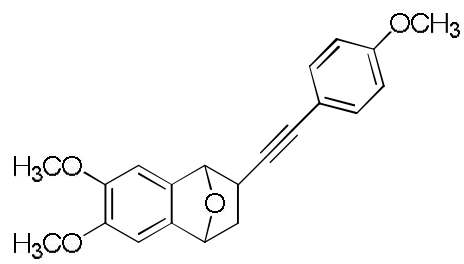
Peak #	RetTime [min]	Type	Width [min]	Area [mAU*s]	Height [mAU]	Area %
1	8.183	BB	0.2325	835.56238	55.22164	12.5151
2	11.948	BBA	0.3899	5840.89551	227.21033	87.4849



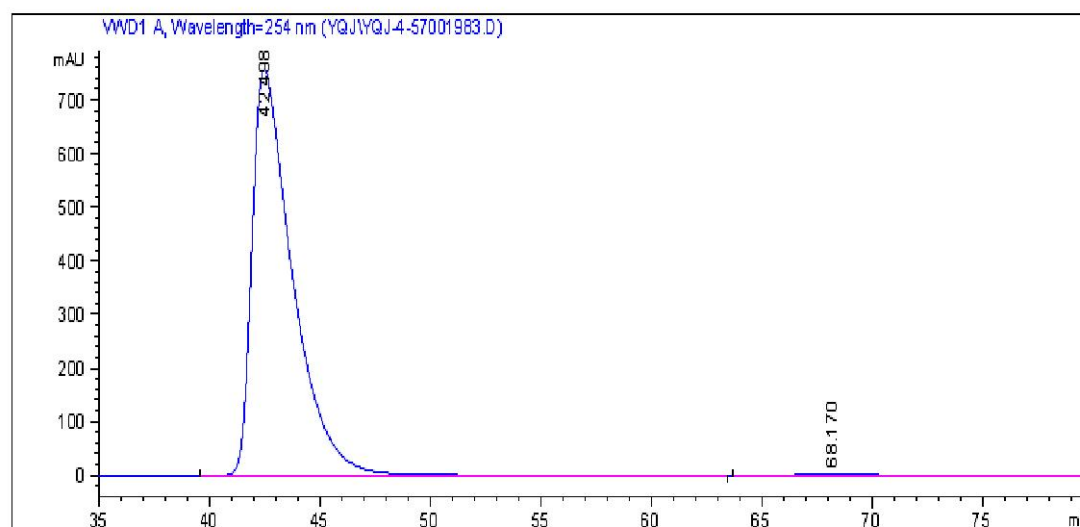
Peak #	RetTime [min]	Type	Width [min]	Area [mAU*s]	Height [mAU]	Area %
1	11.906	BV	0.2675	7552.66846	437.23721	49.8834
2	13.075	VBA	0.2951	7587.97559	396.86441	50.1166



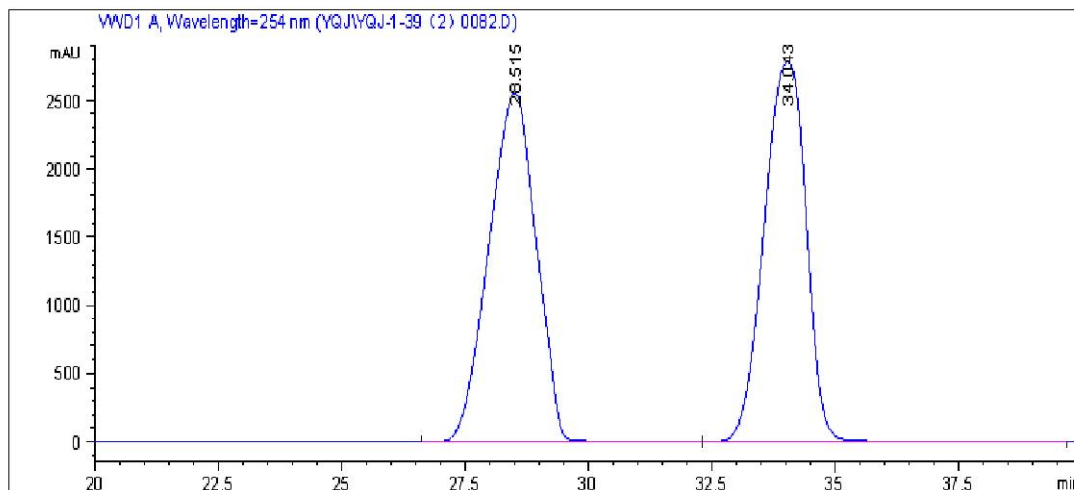
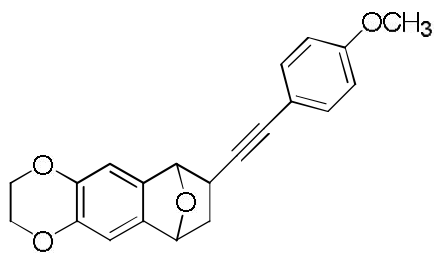
Peak #	RetTime [min]	Type	Width [min]	Area [mAU*s]	Height [mAU]	Area %
1	11.903	BV	0.2854	7957.10010	430.96405	92.6601
2	13.068	VB	0.3159	630.30774	30.52766	7.3399



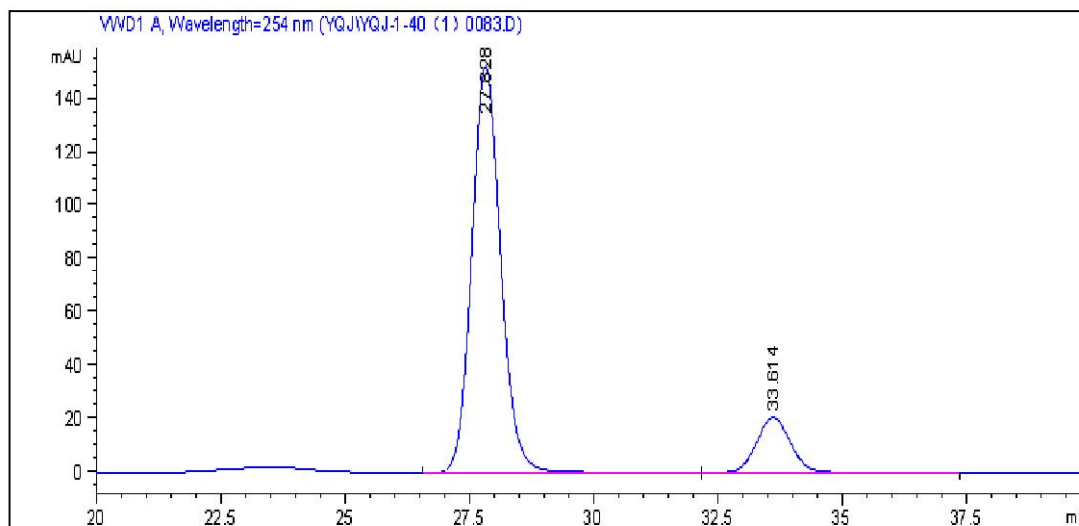
Peak #	RetTime [min]	Type	Width [min]	Area [mAU*s]	Height [mAU]	Area %
1	44.999	BB	1.8534	2.14973e4	170.68402	50.3508
2	69.353	BBA	2.8318	2.11978e4	111.21119	49.6492



Peak #	RetTime [min]	Type	Width [min]	Area [mAU*s]	Height [mAU]	Area %
1	42.498	BB	1.8984	9.69757e4	757.09552	98.9724
2	68.170	BBA	2.9986	1006.82593	4.81690	1.0276



Peak #	RetTime [min]	Type	Width [min]	Area [mAU*s]	Height [mAU]	Area %
1	28.515	BB	1.0212	1.70264e5	2555.96802	50.8443
2	34.043	BV	0.9421	1.64609e5	2782.97803	49.1557



Peak #	RetTime [min]	Type	Width [min]	Area [mAU*s]	Height [mAU]	Area %
1	27.828	BB	0.6242	6174.51123	152.55223	86.3058
2	33.614	BB	0.7392	979.71710	20.58612	13.6942

